

V&V Reference Report

L2 ASCDS Version : 7.6.7.1

Observation 5717 - L2 Version 002
Chandra X-Ray Center

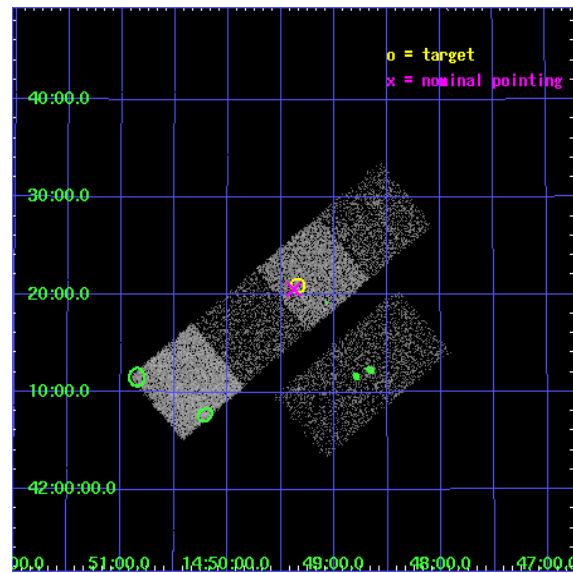
L2 Processing Date : Mar 31 2006

Contents

1	Front	2
2	OBI	3
2.1	OBI	3
2.1.1	Images	3
2.1.2	Bias	3
2.1.3	Parameters	4
2.1.4	Events	4
2.2	Compared Parameters	5
2.3	Aspect	6
2.4	Star Slots	9
2.4.1	Slot 3	9
2.4.2	Slot 4	10
2.4.3	Slot 5	11
2.4.4	Slot 6	12
2.4.5	Slot 7	13
2.5	FID Slots	14
2.5.1	Slot 0	14
2.5.2	Slot 1	15
2.5.3	Slot 2	16
3	Point Sources	17
A	Summary	18
A.1	Status	18
A.2	Comments	18

1 Front

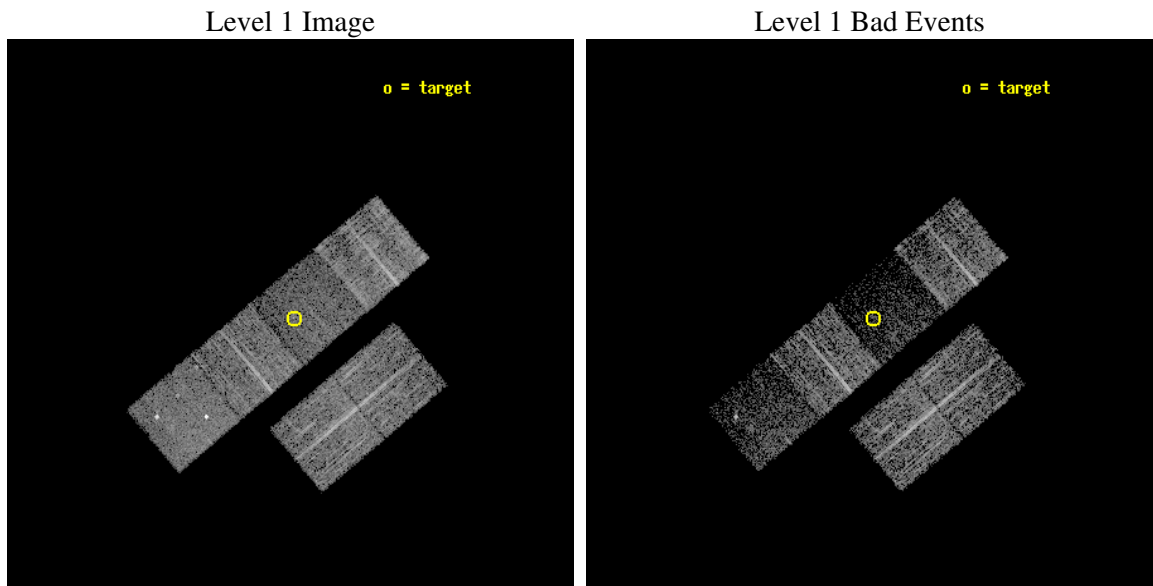
seq_num	701139
obs_id	5717
title	What kind of Jets does Nature make? X-ray characterization of the FIRST Flat Spectrum Sample
observer	Dr. Giovanni Fossati
object	87GB 1447+4233
dtcycle	0
cycle	P
ra_targ	222.33625
dec_targ	42.350389
ra_nom	222.34442878552
dec_nom	42.342949874879
roll_nom	319.71632913629
revision	2
ontime	4358.3999837637
livetime	4303.2112988559
ontime2	4358.3999837637
ontime3	4355.1590434015
ontime5	4358.3999837637
ontime6	4358.3999837637
ontime7	4358.3999837637
ontime8	4358.3999837637
l2events	24614



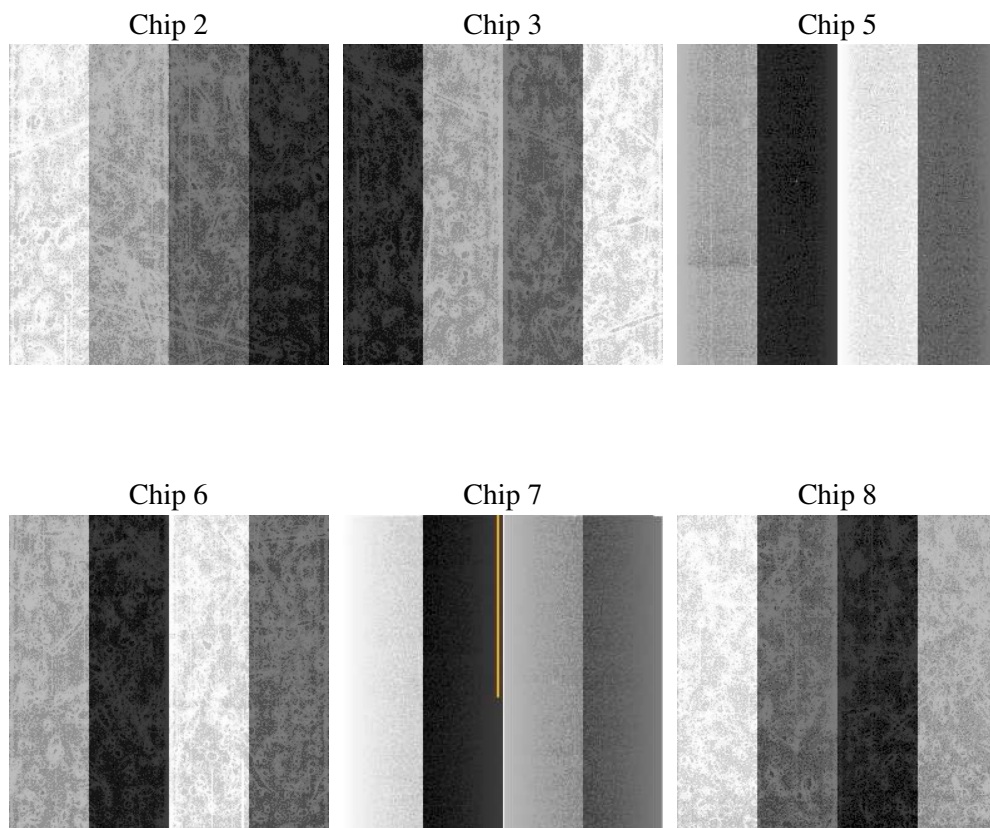
2 OBI

2.1 OBI

2.1.1 Images



2.1.2 Bias



2.1.3 Parameters

obi_num	0
ascdsver	7.6.7.1
caldsver	3.2.1
date	2006-03-31T16:06:41
revision	2

sched_exp_time	4400.000000
ontime	4365.628031075
ontime2	4365.6280011237
ontime3	4362.3870607615
ontime5	4365.628031075
ontime6	4365.6280011237
ontime7	4365.628031075
ontime8	4365.6280011237
l1events	132509

2.1.4 Events

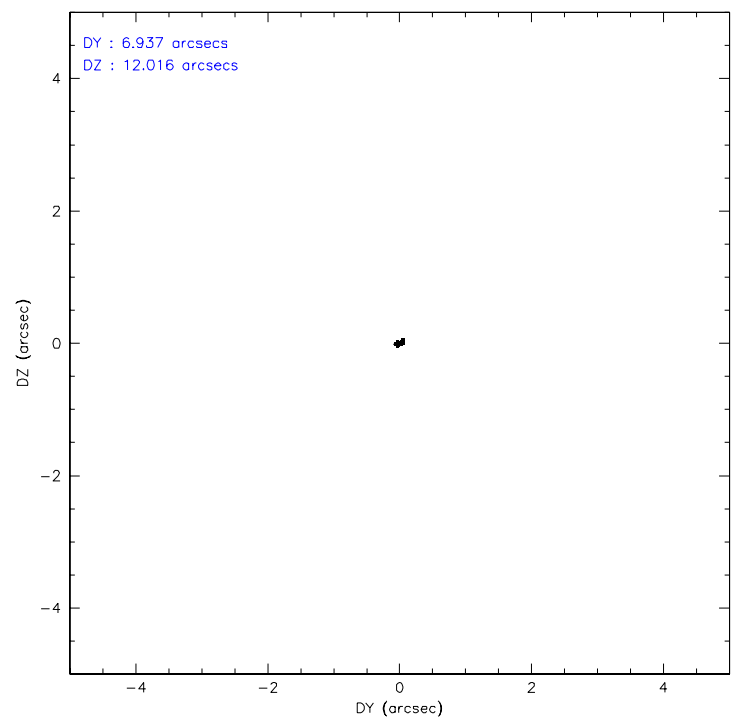
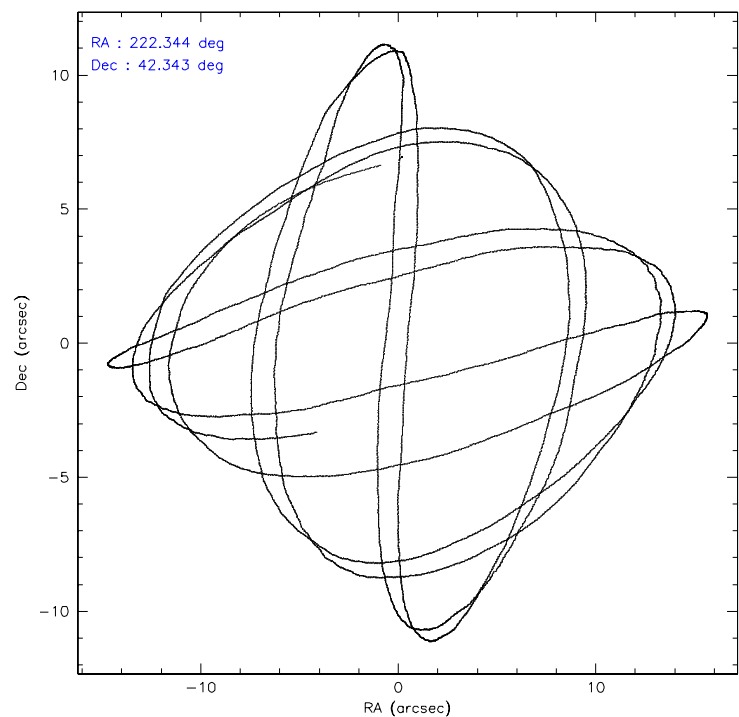
	ccd 2	ccd 3	ccd 5	ccd 6	ccd 7	ccd 8
level 1 events	25191	22153	21884	22549	13565	27167
rejected events	23277	20299	8998	20477	6339	20244
rejected %	92%	91%	41%	90%	46%	74%

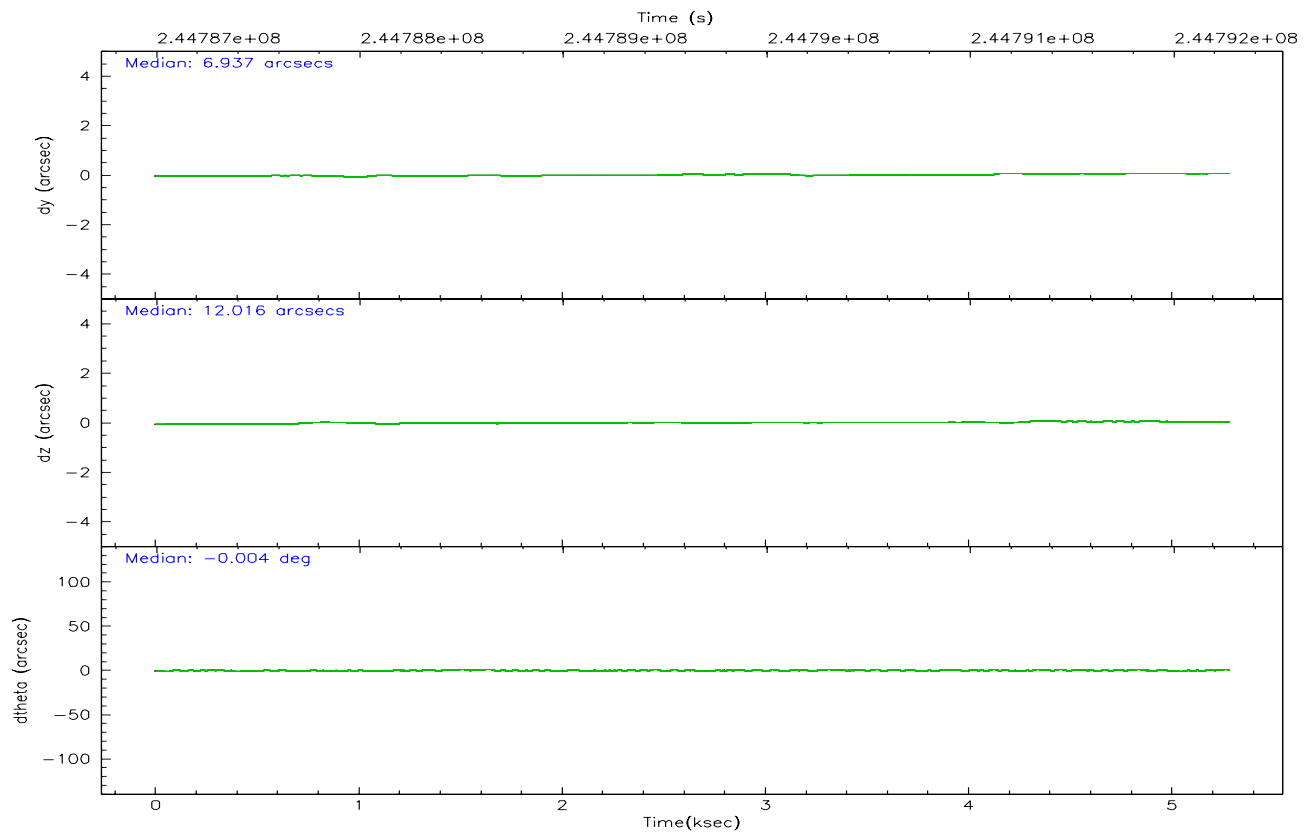
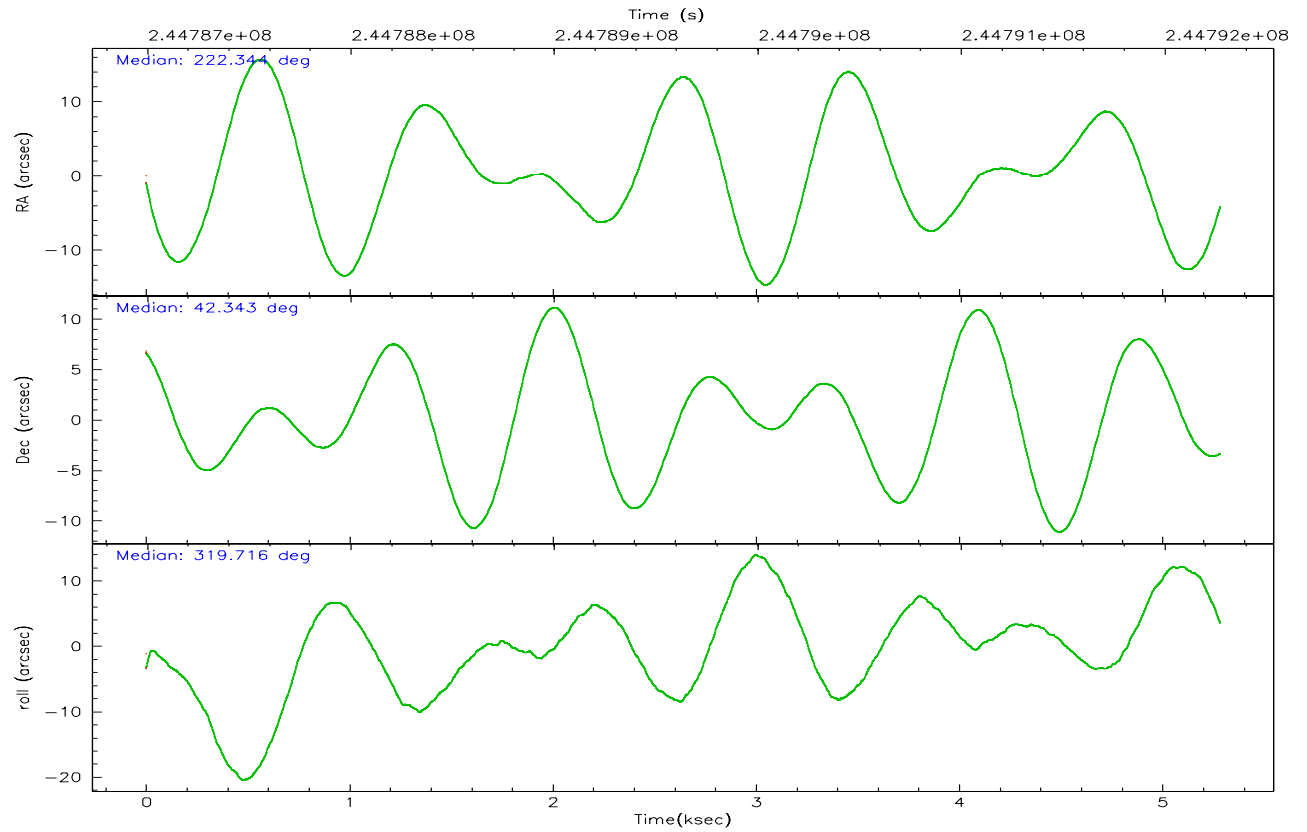
	ccd 2	ccd 3	ccd 5	ccd 6	ccd 7	ccd 8
grade 0 events	751	753	2097	832	622	2008
	2%	3%	9%	3%	4%	7%
grade 1 events	18	9	17	14	23	26
	0%	0%	0%	0%	0%	0%
grade 2 events	447	378	4253	455	2093	1596
	1%	1%	19%	2%	15%	5%
grade 3 events	188	225	453	241	530	753
	0%	1%	2%	1%	3%	2%
grade 4 events	228	212	403	201	580	757
	0%	0%	1%	0%	4%	2%
grade 5 events	365	487	1229	478	1160	814
	1%	2%	5%	2%	8%	2%
grade 6 events	302	289	5697	347	3410	1827
	1%	1%	26%	1%	25%	6%
grade 7 events	22892	19800	7735	19981	5147	19386
	90%	89%	35%	88%	37%	71%

2.2 Compared Parameters

Parameter	Planned	Actual	Parameter	Planned	Actual
Instrument	ACIS	ACIS	Obspar format version number	6	6
Detector	ACIS-235678	ACIS-235678	Obspar file type	PREDICTED	ACTUAL
Grating	NONE	NONE	Obspar update status	NONE	UPDATED
Data mode	VFAINT	VFAINT	On-chip summing requested	N	N
Observation mode	POINTING	POINTING	Subarray requested	NONE	NONE
Pointing RA	222.308255	222.3444287855161	Alternating exposures requested	N	N
Pointing Dec	42.347437	42.34294987487876	Primary exposure time	0.000000	3.2
Pointing Roll	319.584068	319.7163291362879			
SIM focus pos (mm)	-0.684267	-0.6828225247311905			
SIM defocus (mm)	0	0.001444936568705701			
SIM translation stage pos (mm)	-190.132523	-190.1425803651734			
SIM translation stage offset (mm)	0	0.01005778216563158			
Observation start time	244787874.184000	244786564.92412			
Observation start date	2005-10-04T04:36:50	2005-10-04T04:16:04			
Observation end time	244792274.184000	244793211.02443			
Observation end date	2005-10-04T05:50:10	2005-10-04T06:06:51			
Read mode	TIMED	TIMED			

2.3 Aspect



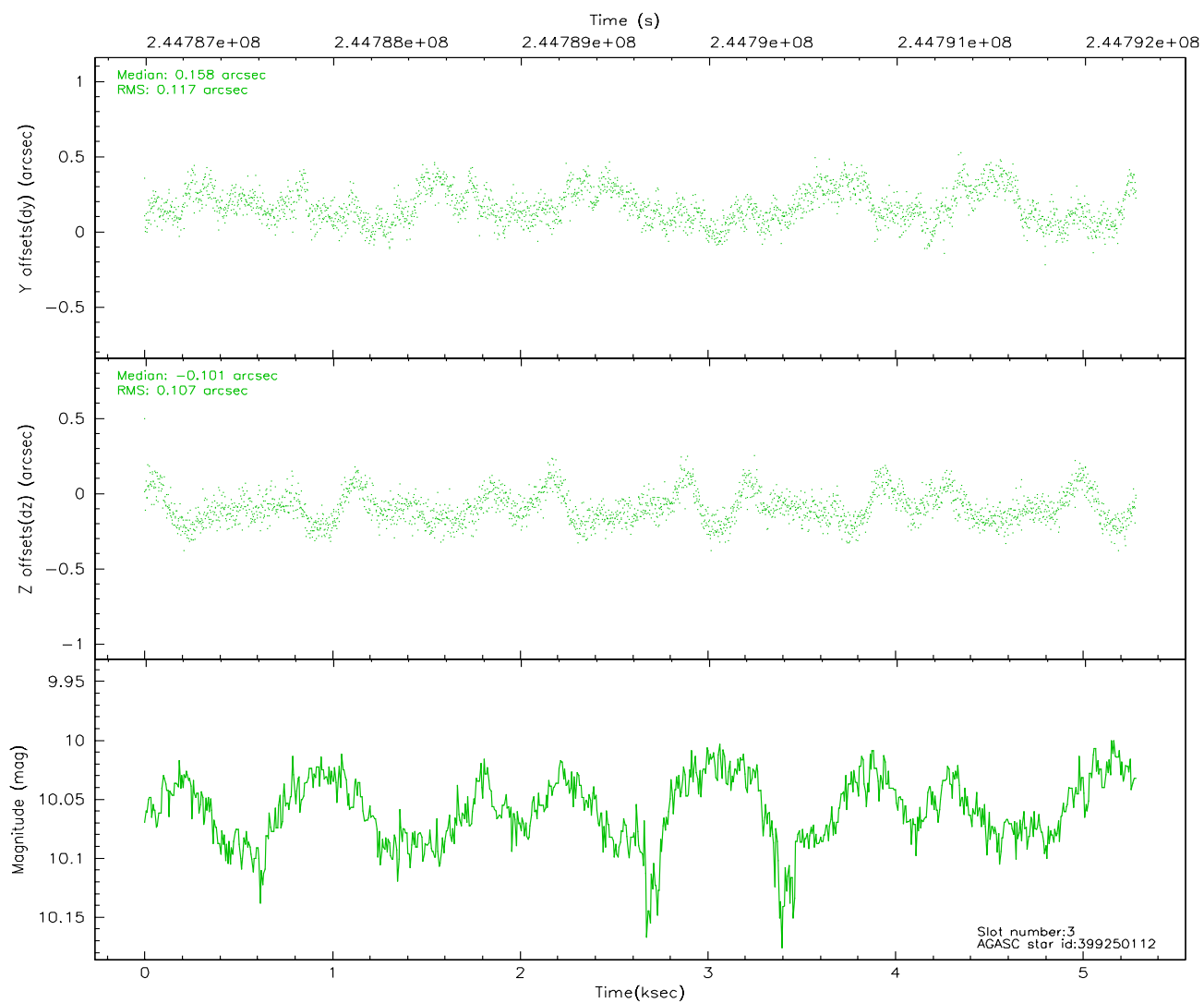
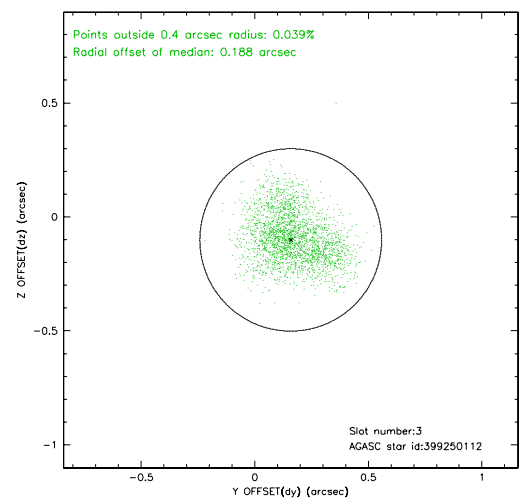
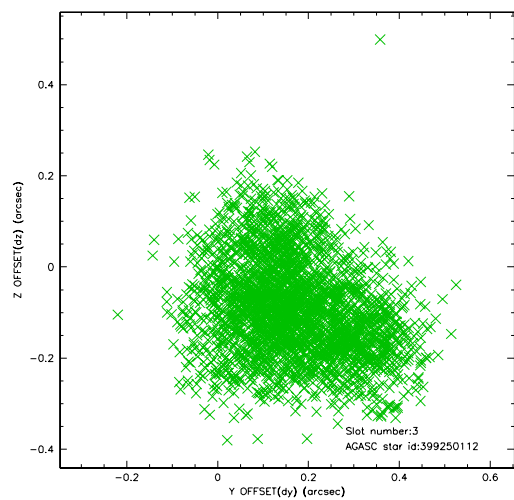


Slot Statistics

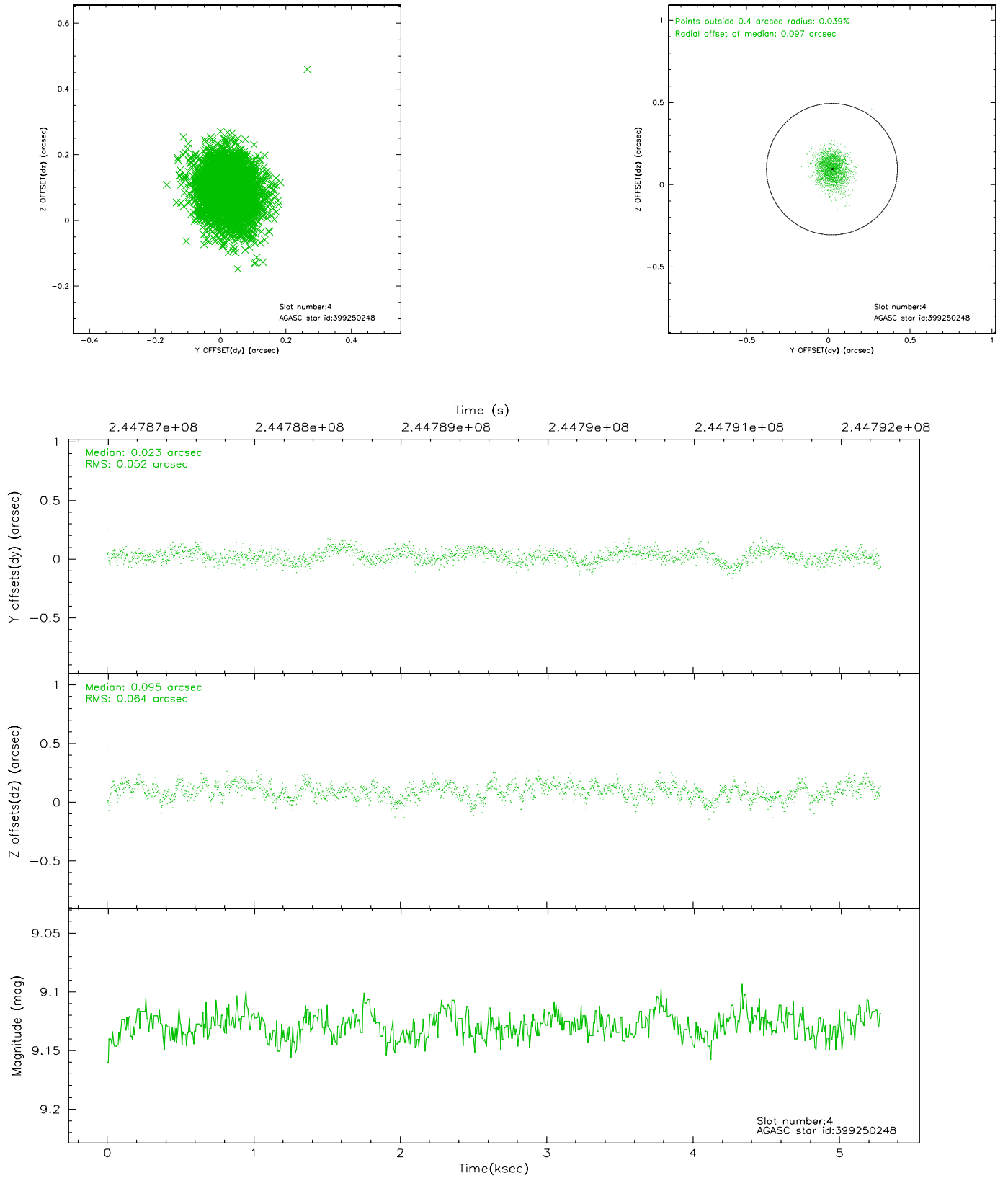
slot	status	id	mag	n_pts	med_dy	med_dz	dr1	dr2	ra	dec	mean_y	mean_z
0	FID	ACIS-S-2	7.10	1290	-0.017	-0.004	0.007	0.012	0.000000	0.000000	-759.71	-1733.27
1	FID	ACIS-S-4	7.20	1290	0.026	0.010	0.005	0.009	0.000000	0.000000	2153.09	174.04
2	FID	ACIS-S-5	7.23	1290	-0.040	0.004	0.007	0.010	0.000000	0.000000	-1811.11	169.01
3	GUIDE	399250112	10.06	2574	0.158	-0.101	0.173	0.268	222.847540	42.109720	1649.13	286.01
4	GUIDE	399250248	9.13	2579	0.023	0.095	0.087	0.141	221.786043	42.350895	-1067.44	-887.44
5	GUIDE	399252704	10.41	2578	-0.134	-0.006	0.214	0.328	223.327254	42.388987	1955.33	1882.91
6	GUIDE	399640208	9.60	2577	-0.030	-0.000	0.099	0.158	222.120800	42.799736	-1431.87	920.22
7	GUIDE	399642384	9.69	2577	-0.043	0.017	0.096	0.156	222.533684	42.728698	-436.73	1432.79

2.4 Star Slots

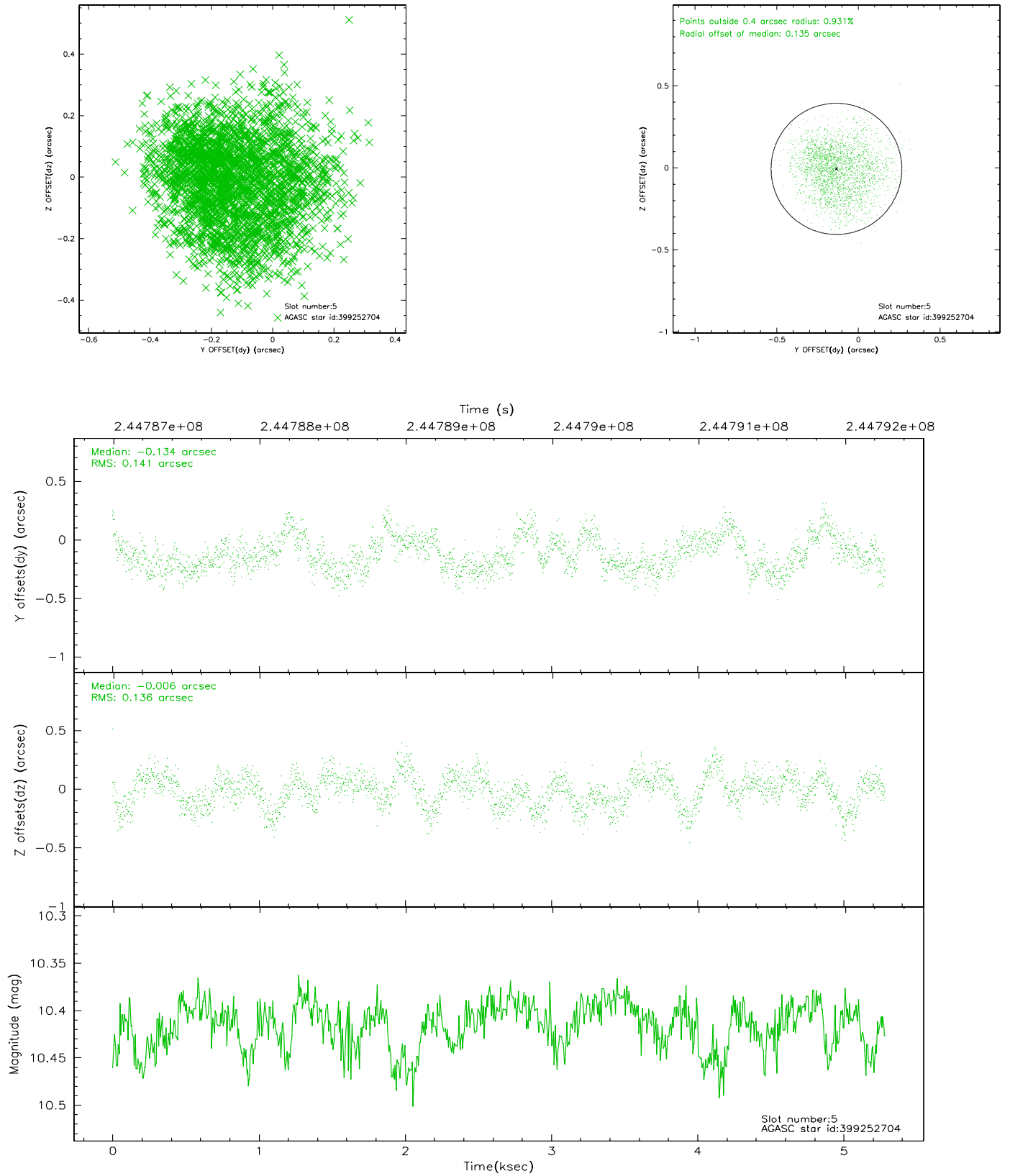
2.4.1 Slot 3



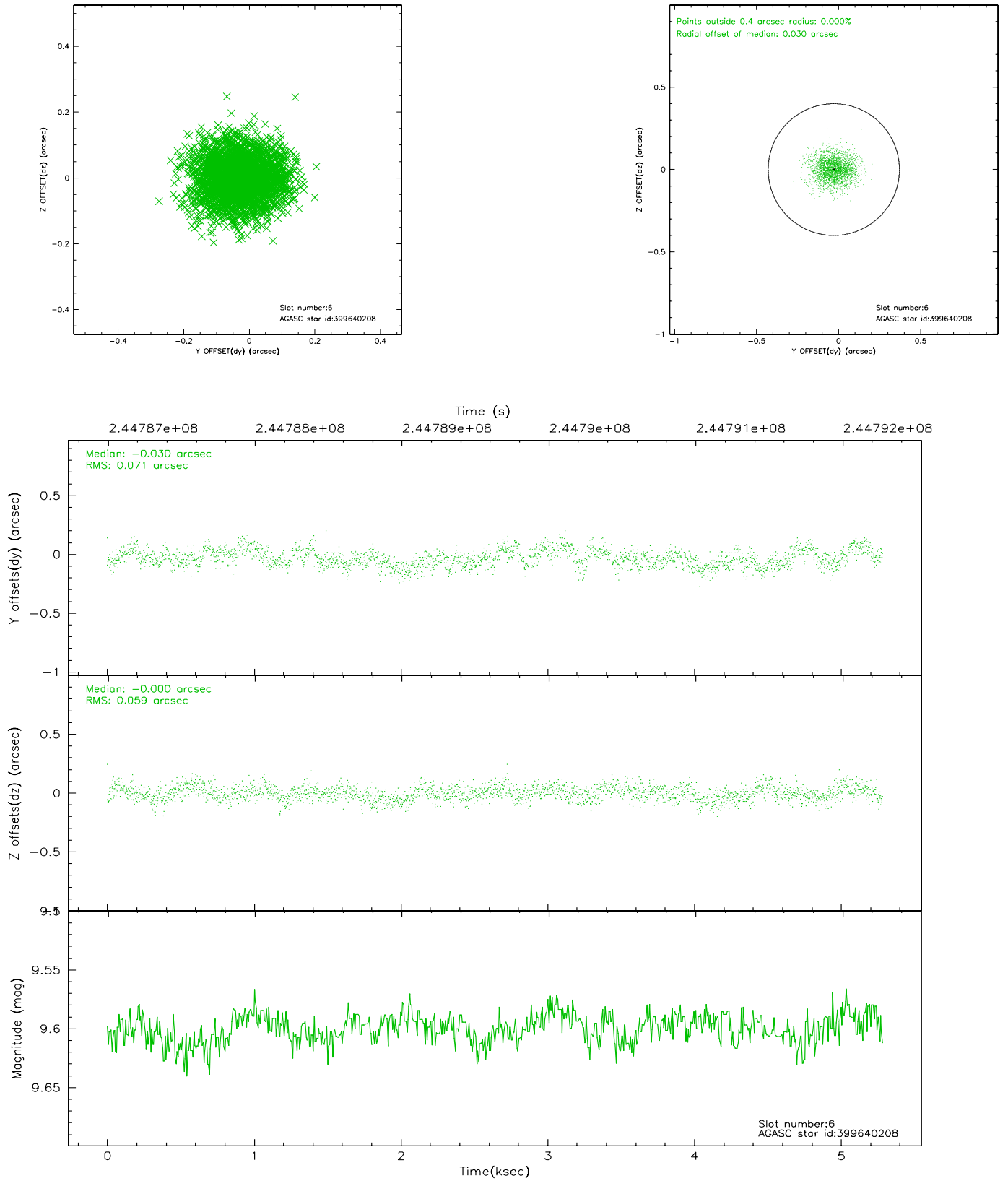
2.4.2 Slot 4



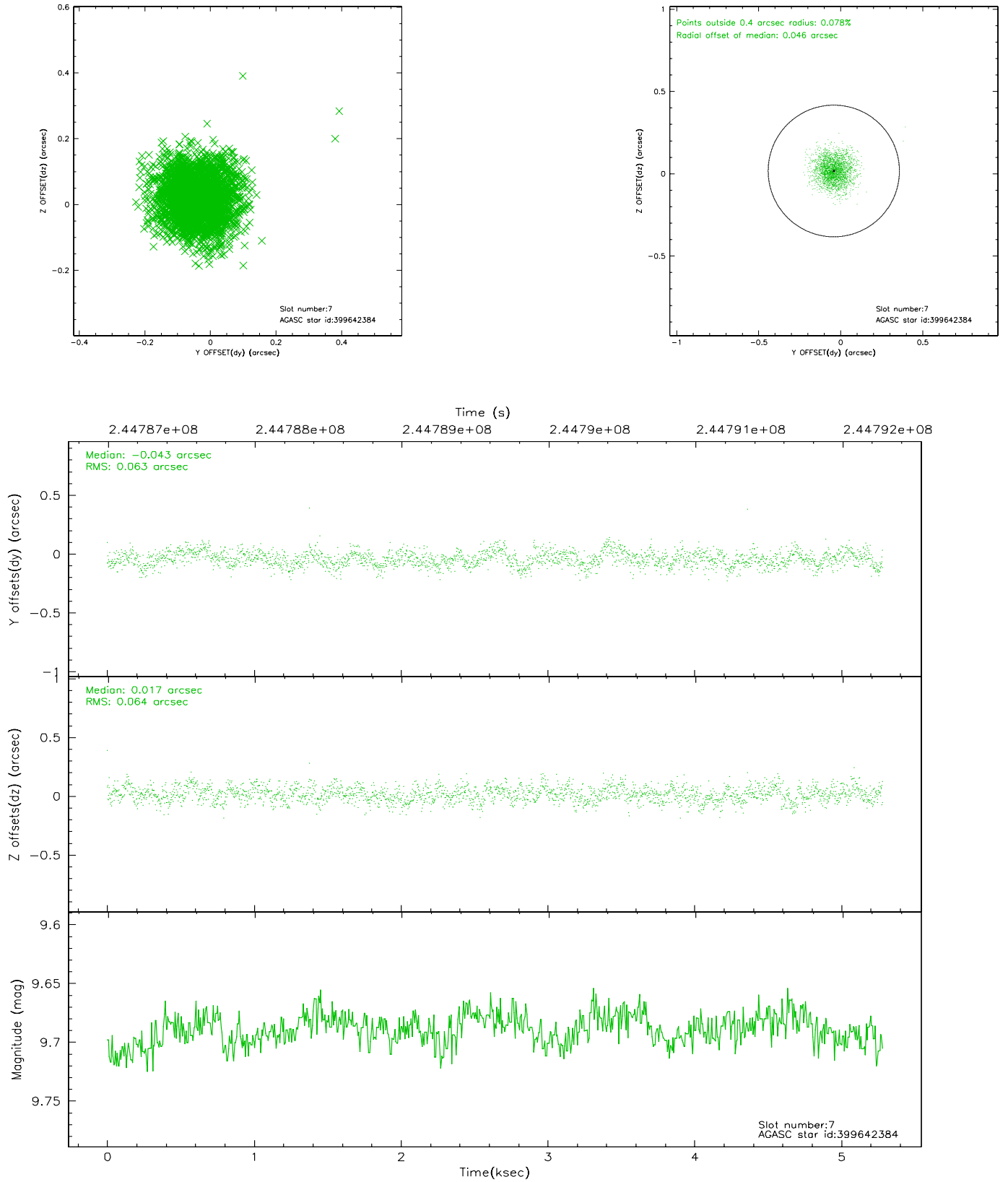
2.4.3 Slot 5



2.4.4 Slot 6

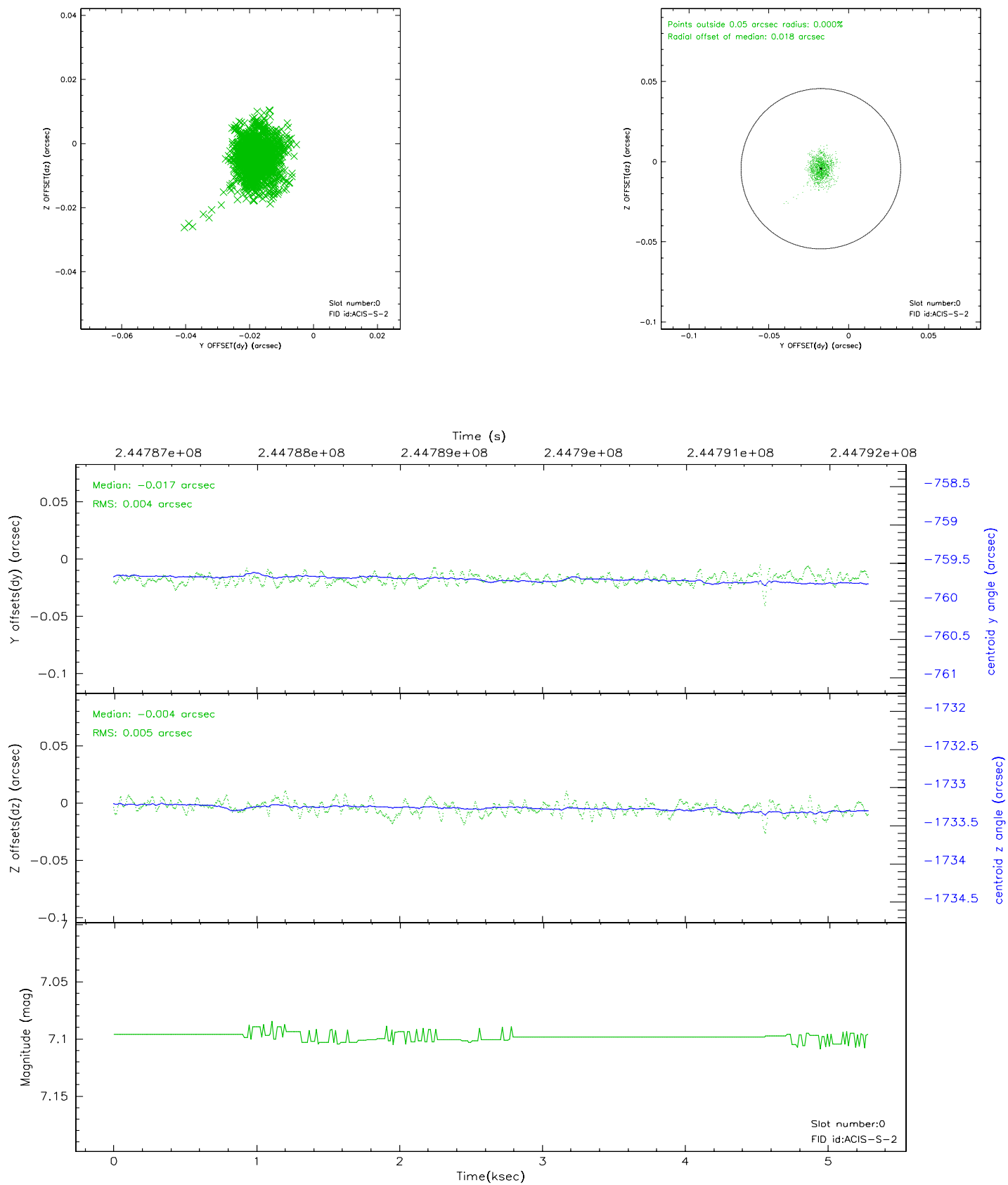


2.4.5 Slot 7

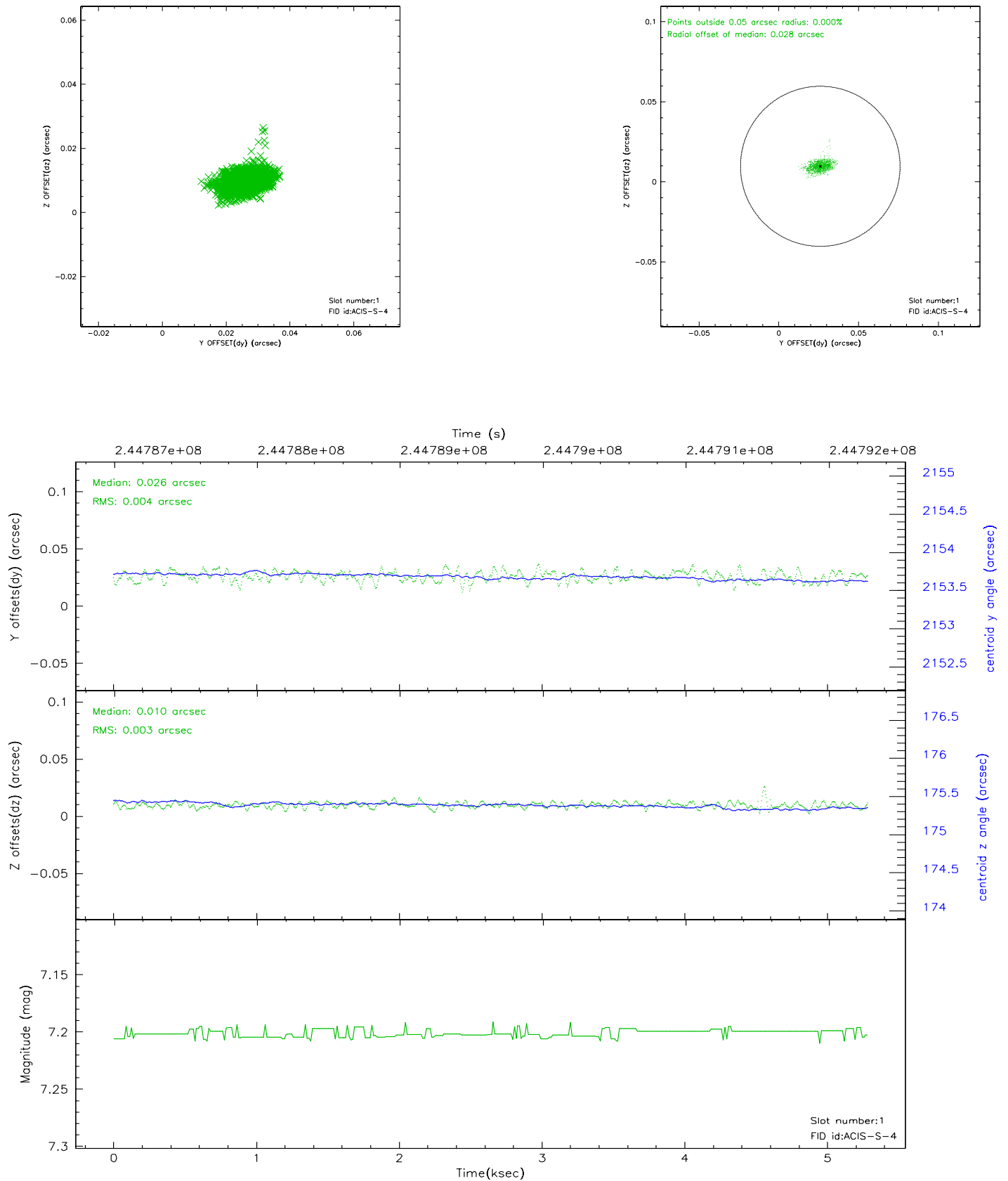


2.5 FID Slots

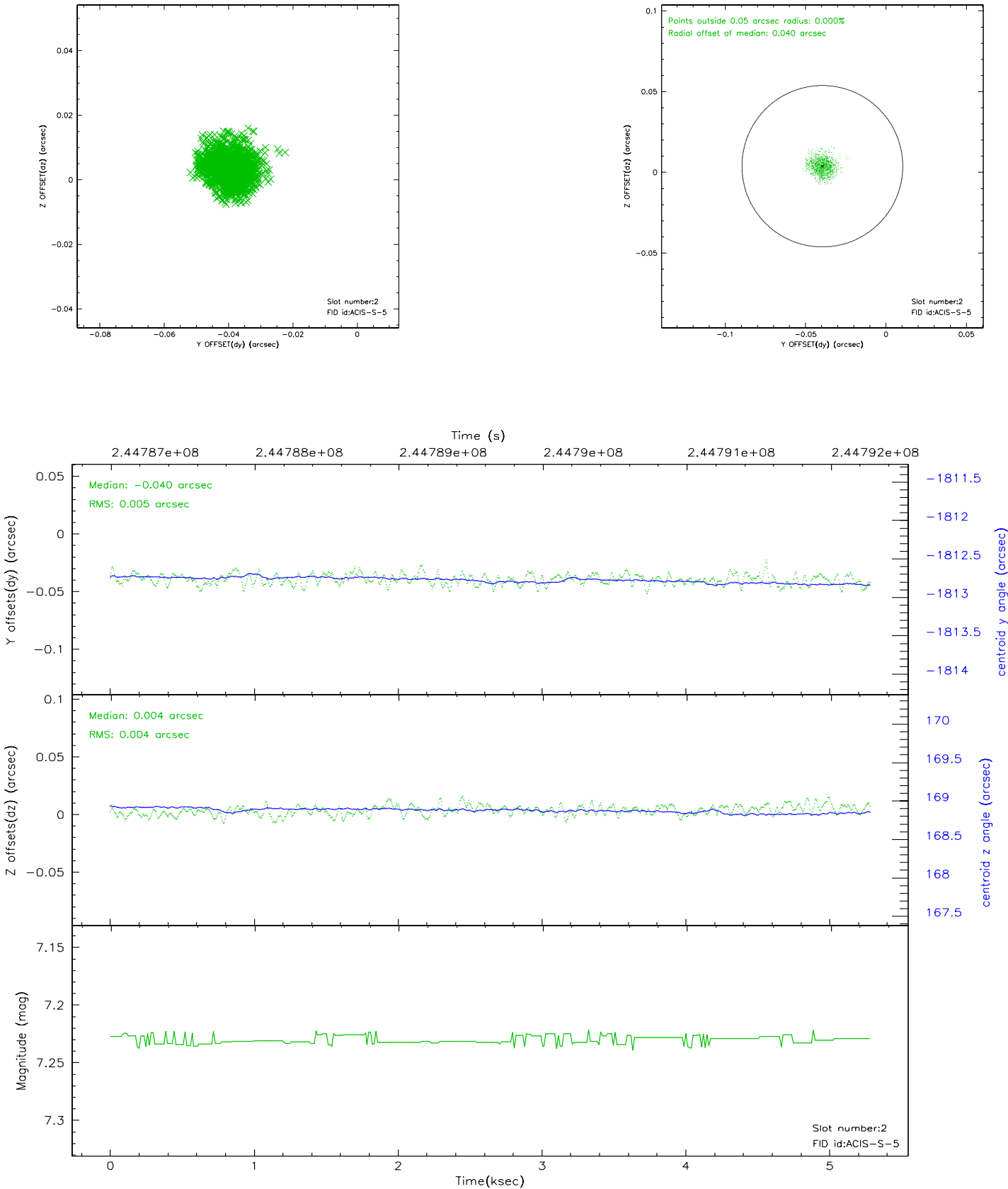
2.5.1 Slot 0



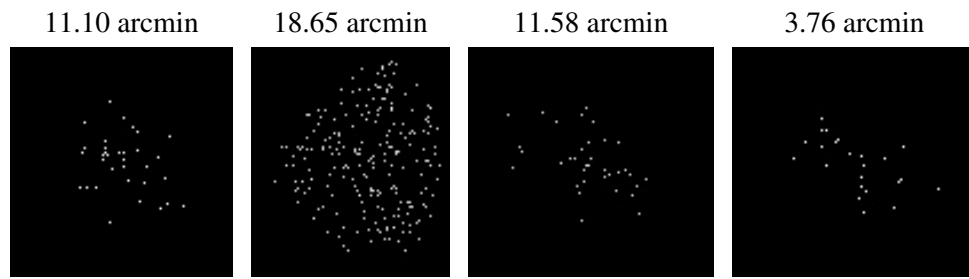
2.5.2 Slot 1



2.5.3 Slot 2



3 Point Sources



A Summary

A.1 Status

V&V Scientist	Beth Sundheim
V&V Date (YYYY-MM-DD)	2006.03.31
V&V Edition	1
V&V Disposition and Status	OK
V&V Charge Time	4.358399

A.2 Comments