

V&V Reference Report

L2 ASCDS Version : 7.6.7

Observation 5709 - L2 Version 002
Chandra X-Ray Center

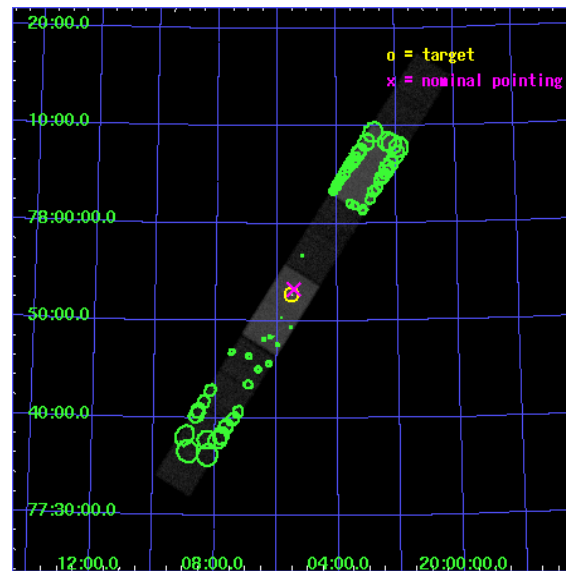
L2 Processing Date: Mar 4 2006

Contents

| | | |
|----------|-------------------------------|-----------|
| 1 | Front | 2 |
| 2 | OBI | 3 |
| 2.1 | OBI | 3 |
| 2.1.1 | Images | 3 |
| 2.1.2 | Bias | 3 |
| 2.1.3 | Parameters | 4 |
| 2.1.4 | Events | 4 |
| 2.2 | Compared Parameters | 5 |
| 2.3 | Aspect | 6 |
| 2.4 | Star Slots | 9 |
| 2.4.1 | Slot 3 | 9 |
| 2.4.2 | Slot 4 | 10 |
| 2.4.3 | Slot 5 | 11 |
| 2.4.4 | Slot 6 | 12 |
| 2.4.5 | Slot 7 | 13 |
| 2.5 | FID Slots | 14 |
| 2.5.1 | Slot 0 | 14 |
| 2.5.2 | Slot 1 | 15 |
| 2.5.3 | Slot 2 | 16 |
| 3 | Point Sources | 17 |
| A | Summary | 18 |
| A.1 | Status | 18 |
| A.2 | Comments | 18 |

1 Front

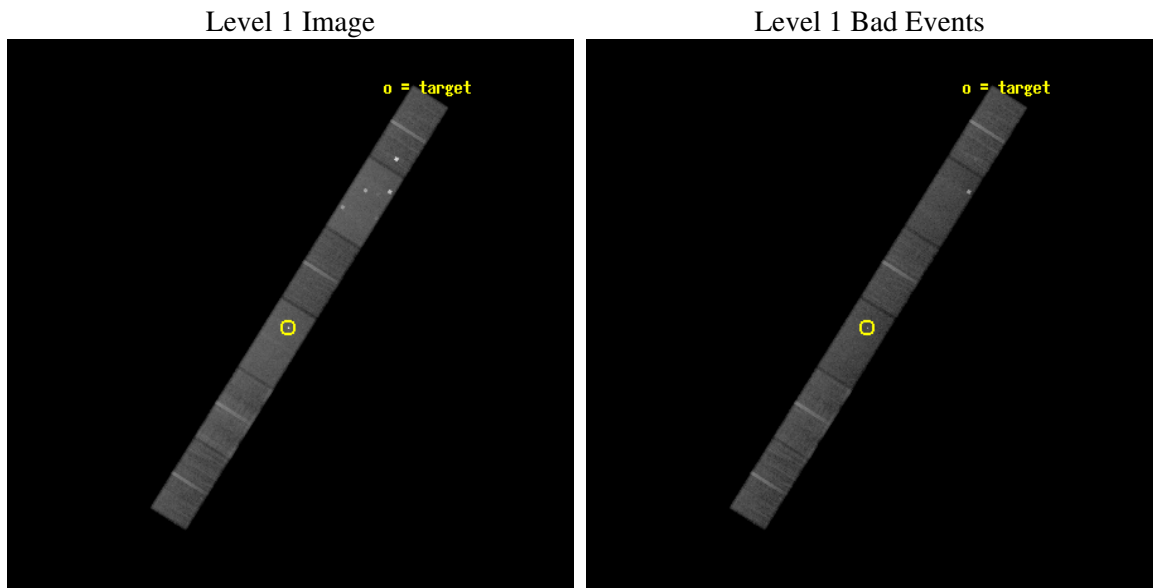
| | |
|----------|--|
| seq_num | 701131 |
| obs_id | 5709 |
| title | X-ray from misaligned FRI jets: IC/CMB emission from a fast spine? |
| observer | Dr. Rita Sambruna |
| object | 2007+777 |
| dtcycle | 0 |
| cycle | P |
| ra_targ | 301.37875 |
| dec_targ | 77.878611 |
| ra_nom | 301.36150098235 |
| dec_nom | 77.887554034015 |
| roll_nom | 122.16893003543 |
| revision | 2 |
| ontime | 36867.600244164 |
| livetime | 36045.756984909 |
| ontime4 | 36867.600244164 |
| ontime5 | 36867.600244164 |
| ontime6 | 36867.600244164 |
| ontime7 | 36867.600244164 |
| ontime8 | 36867.600244164 |
| ontime9 | 36867.600244164 |
| l2events | 245697 |



2 OBI

2.1 OBI

2.1.1 Images

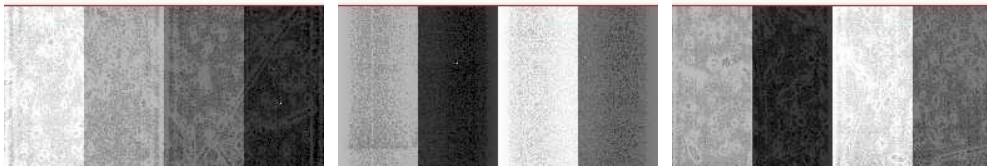


2.1.2 Bias

Chip 4

Chip 5

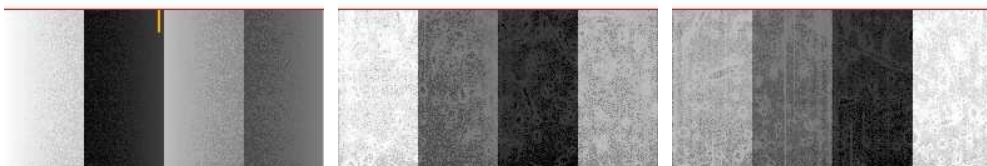
Chip 6



Chip 7

Chip 8

Chip 9



2.1.3 Parameters

| | |
|----------|---------------------|
| obi_num | 0 |
| ascdsver | 7.6.7 |
| caldsver | 3.2.1 |
| date | 2006-03-04T05:46:42 |
| revision | 2 |

| | |
|----------------|-----------------|
| sched_exp_time | 36685.786000 |
| ontime | 37398.461724788 |
| ontime4 | 37398.461694896 |
| ontime5 | 37398.461724788 |
| ontime6 | 37398.461694896 |
| ontime7 | 37398.461724788 |
| ontime8 | 37398.461694896 |
| ontime9 | 37398.461724788 |
| l1events | 1099496 |

2.1.4 Events

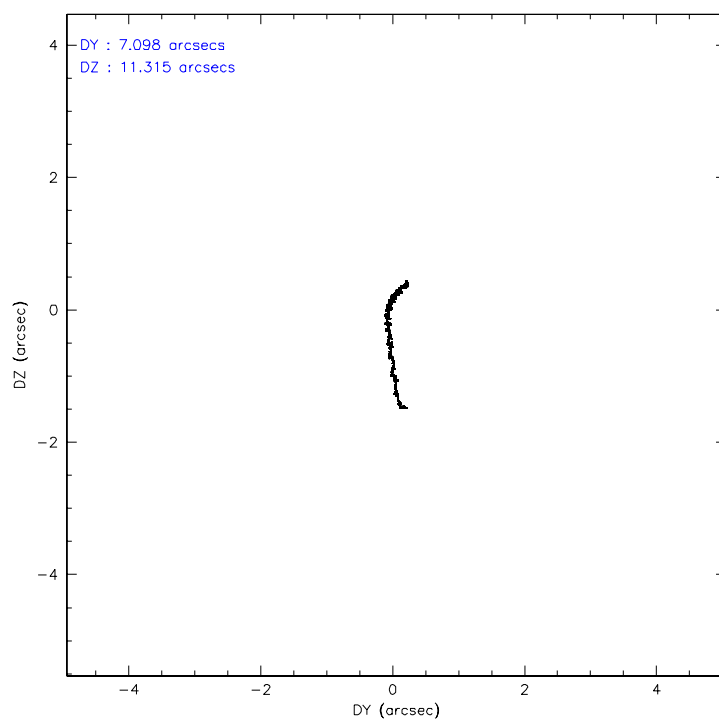
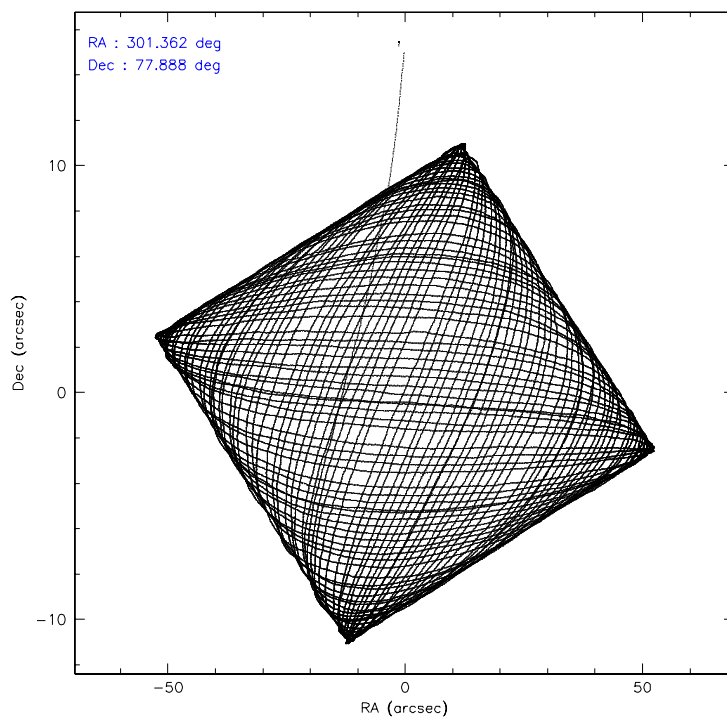
| | ccd 4 | ccd 5 | ccd 6 | ccd 7 | ccd 8 | ccd 9 |
|-----------------|--------|--------|--------|--------|--------|--------|
| level 1 events | 180934 | 226819 | 148719 | 203079 | 191235 | 148710 |
| rejected events | 140231 | 121543 | 128691 | 117474 | 148565 | 127860 |
| rejected % | 77% | 53% | 86% | 57% | 77% | 85% |

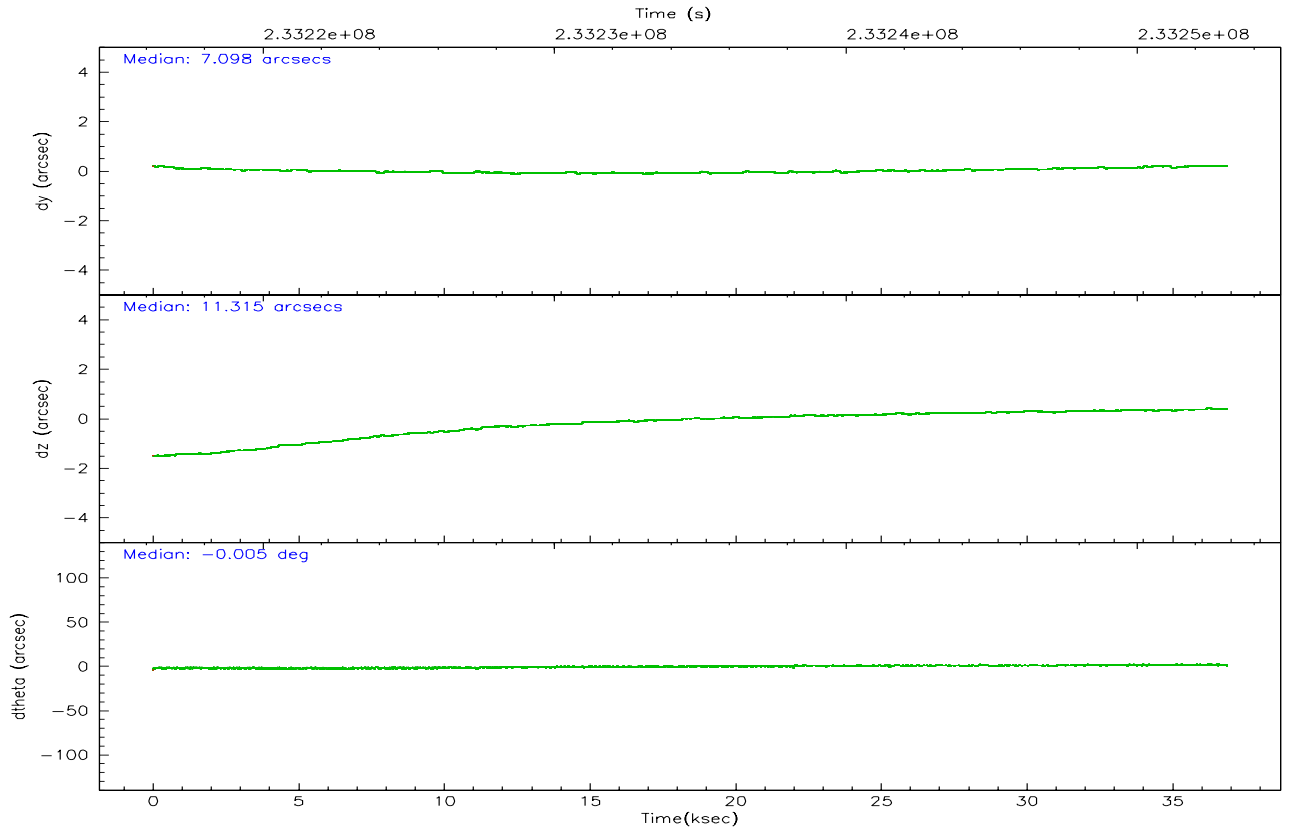
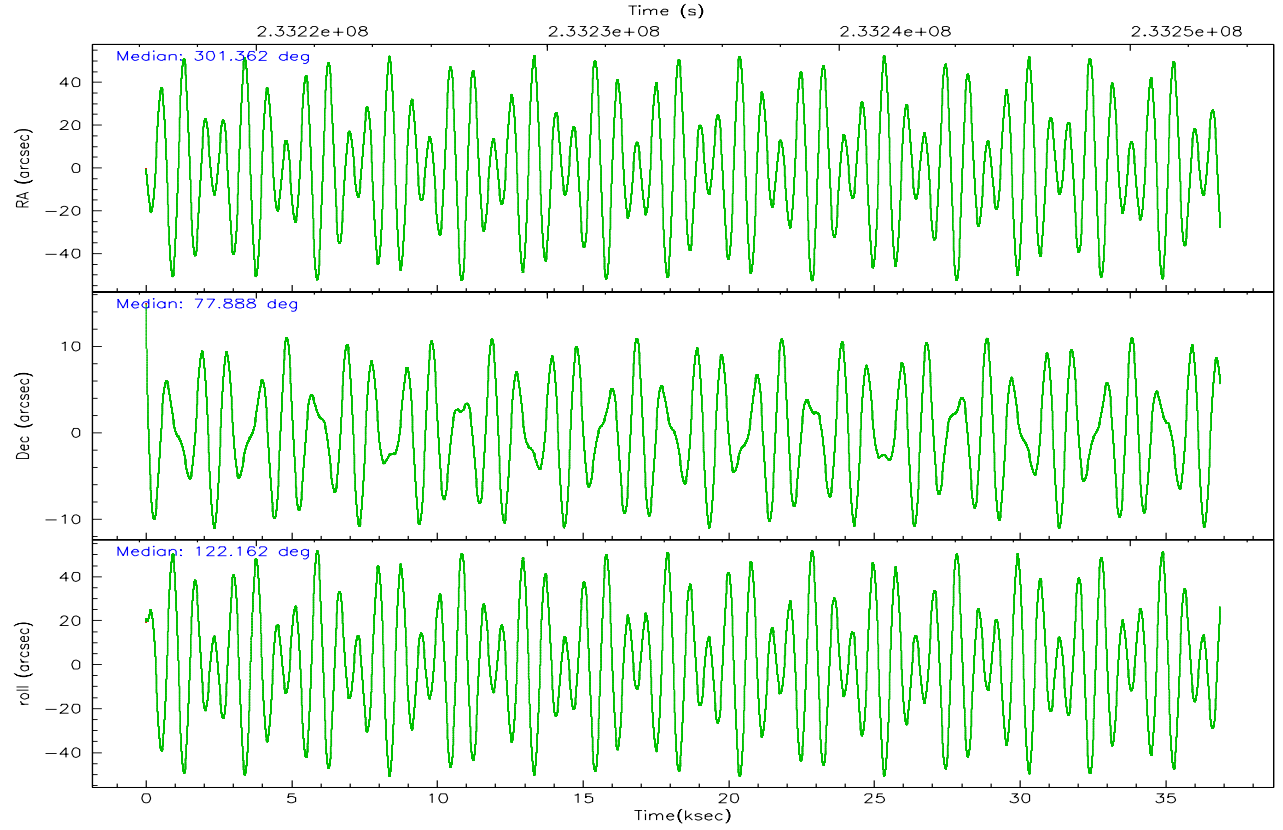
| | ccd 4 | ccd 5 | ccd 6 | ccd 7 | ccd 8 | ccd 9 |
|----------------|--------|--------|--------|--------|--------|--------|
| grade 0 events | 29797 | 17465 | 8704 | 7131 | 14425 | 9774 |
| | 16% | 7% | 5% | 3% | 7% | 6% |
| grade 1 events | 188 | 3937 | 35 | 216 | 110 | 76 |
| | 0% | 1% | 0% | 0% | 0% | 0% |
| grade 2 events | 3925 | 31218 | 3828 | 21868 | 8960 | 3672 |
| | 2% | 13% | 2% | 10% | 4% | 2% |
| grade 3 events | 2256 | 2417 | 2119 | 5497 | 4483 | 2168 |
| | 1% | 1% | 1% | 2% | 2% | 1% |
| grade 4 events | 2241 | 2376 | 2081 | 5362 | 4155 | 2105 |
| | 1% | 1% | 1% | 2% | 2% | 1% |
| grade 5 events | 6211 | 10267 | 6490 | 13494 | 8677 | 6917 |
| | 3% | 4% | 4% | 6% | 4% | 4% |
| grade 6 events | 3053 | 53610 | 3540 | 46810 | 11211 | 3408 |
| | 1% | 23% | 2% | 23% | 5% | 2% |
| grade 7 events | 133263 | 105529 | 121922 | 102701 | 139214 | 120590 |
| | 73% | 46% | 81% | 50% | 72% | 81% |

2.2 Compared Parameters

| Parameter | Planned | Actual | Parameter | Planned | Actual |
|-----------------------------------|---------------------|----------------------|---------------------------------|-----------|---------|
| Instrument | ACIS | ACIS | Obspar format version number | 6 | 6 |
| Detector | ACIS-456789 | ACIS-456789 | Obspar file type | PREDICTED | ACTUAL |
| Grating | NONE | NONE | Obspar update status | NONE | UPDATED |
| Data mode | FAINT | FAINT | On-chip summing requested | N | N |
| Observation mode | POINTING | POINTING | Subarray requested | 1/2 | 1/2 |
| Pointing RA | 301.476891 | 301.3615009823494 | Subarray start row | 0 | 257 |
| Pointing Dec | 77.875159 | 77.88755403401483 | Subarray row count | 1024 | 512 |
| Pointing Roll | 121.899482 | 122.1689300354319 | Alternating exposures requested | N | N |
| SIM focus pos (mm) | -0.684267 | -0.6828225247311905 | Primary exposure time | 0.000000 | 1.8 |
| SIM defocus (mm) | 0 | 0.001444936568705701 | | | |
| SIM translation stage pos (mm) | -190.132523 | -190.1400660498719 | | | |
| SIM translation stage offset (mm) | 0 | 0.00754346686406393 | | | |
| Observation start time | 233216409.184000 | 233215294.29416 | | | |
| Observation start date | 2005-05-23T06:19:05 | 2005-05-23T06:01:34 | | | |
| Observation end time | 233253095.184000 | 233253318.2084 | | | |
| Observation end date | 2005-05-23T16:30:31 | 2005-05-23T16:35:18 | | | |
| Read mode | TIMED | TIMED | | | |

2.3 Aspect



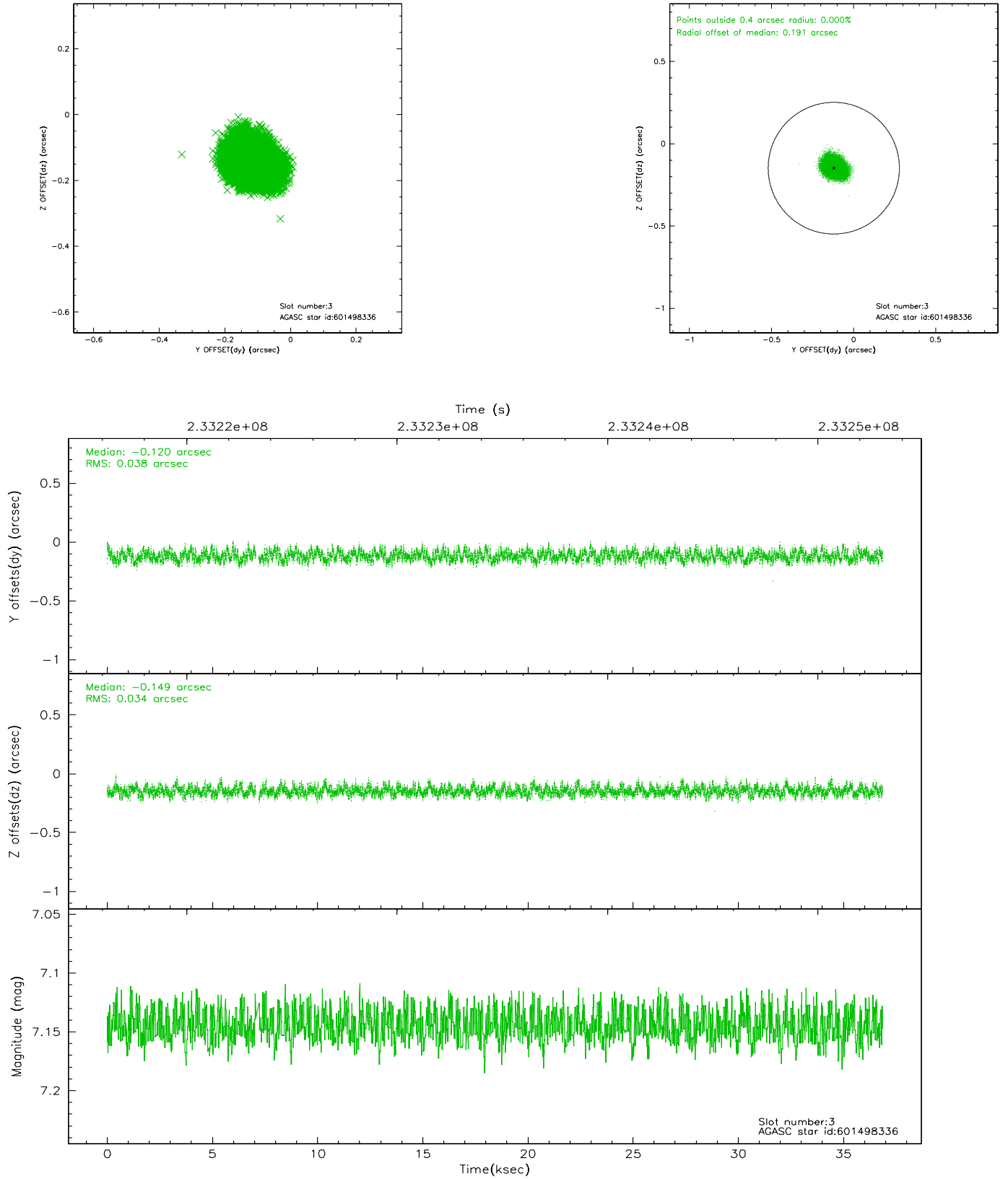


Slot Statistics

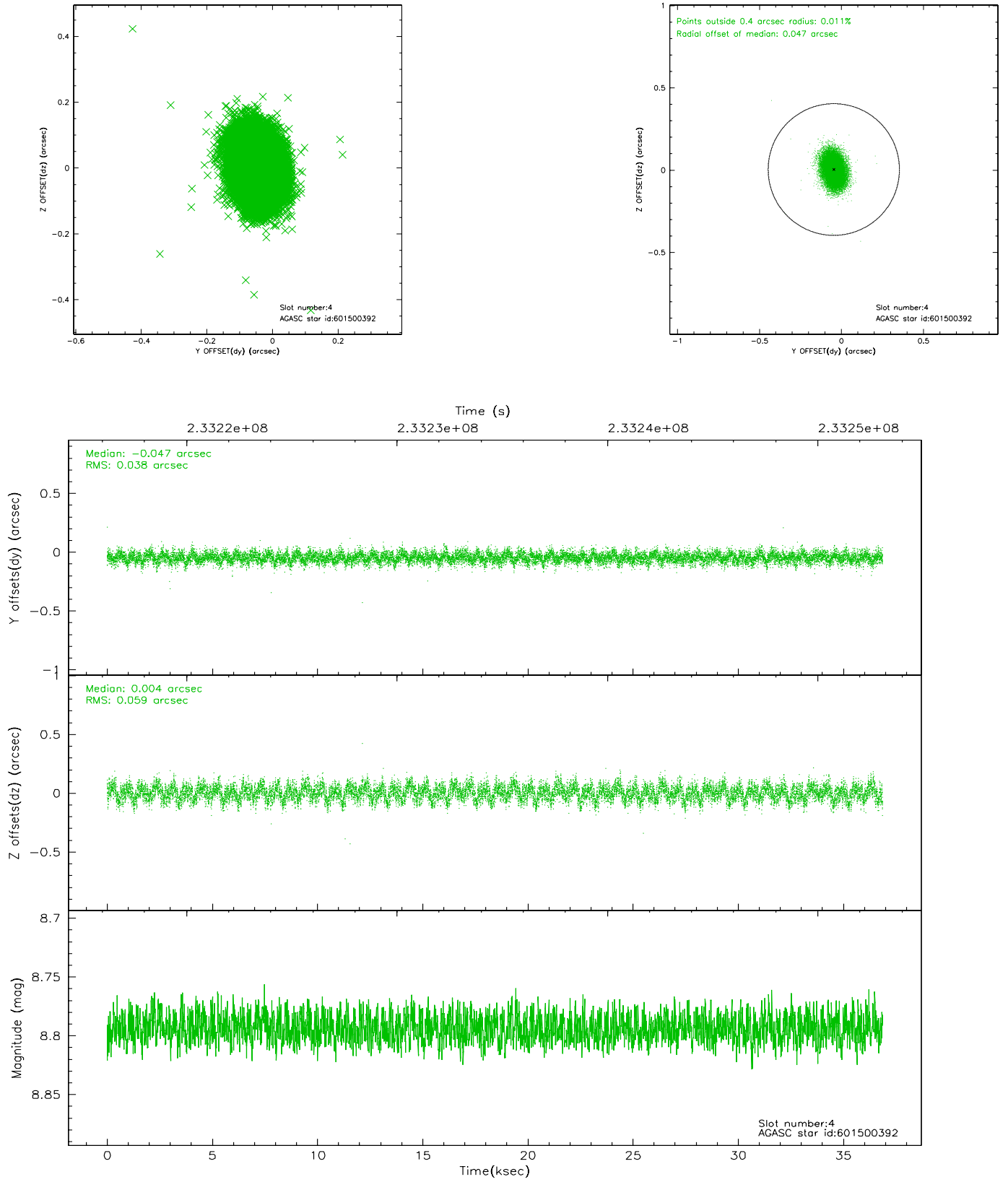
| slot | status | id | mag | n_pts | med_dy | med_dz | dr1 | dr2 | ra | dec | mean_y | mean_z |
|------|--------|-----------|------|-------|--------|--------|-------|-------|------------|-----------|----------|----------|
| 0 | FID | ACIS-S-2 | 7.10 | 8992 | -0.036 | -0.002 | 0.014 | 0.021 | 0.000000 | 0.000000 | -759.88 | -1732.39 |
| 1 | FID | ACIS-S-4 | 7.20 | 8993 | 0.051 | 0.018 | 0.014 | 0.028 | 0.000000 | 0.000000 | 2153.44 | 176.13 |
| 2 | FID | ACIS-S-5 | 7.23 | 8993 | -0.048 | -0.007 | 0.009 | 0.015 | 0.000000 | 0.000000 | -1812.73 | 169.75 |
| 3 | GUIDE | 601498336 | 7.15 | 17914 | -0.120 | -0.149 | 0.055 | 0.087 | 301.598476 | 77.537803 | -1080.85 | 561.38 |
| 4 | GUIDE | 601500392 | 8.79 | 17985 | -0.047 | 0.004 | 0.074 | 0.122 | 303.578266 | 78.185280 | 153.47 | -1919.18 |
| 5 | GUIDE | 601514248 | 7.18 | 17987 | 0.022 | 0.062 | 0.058 | 0.089 | 301.995239 | 77.824437 | -361.40 | -238.56 |
| 6 | GUIDE | 601363376 | 8.34 | 17976 | 0.127 | 0.115 | 0.058 | 0.091 | 297.258681 | 77.993065 | 2124.91 | 2395.85 |
| 7 | GUIDE | 601371520 | 9.14 | 17935 | 0.016 | -0.034 | 0.074 | 0.121 | 299.561030 | 78.034724 | 1263.26 | 898.23 |

2.4 Star Slots

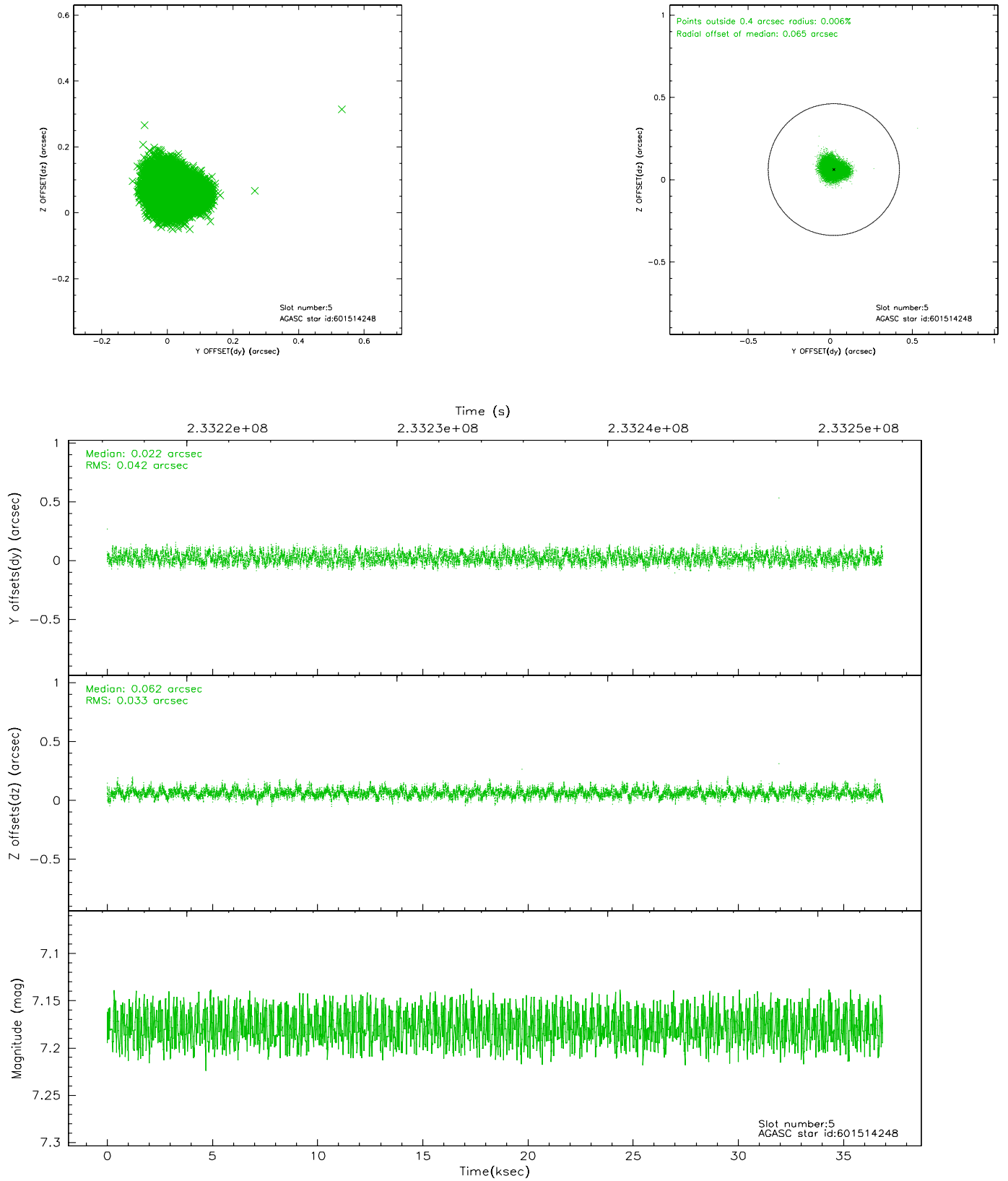
2.4.1 Slot 3



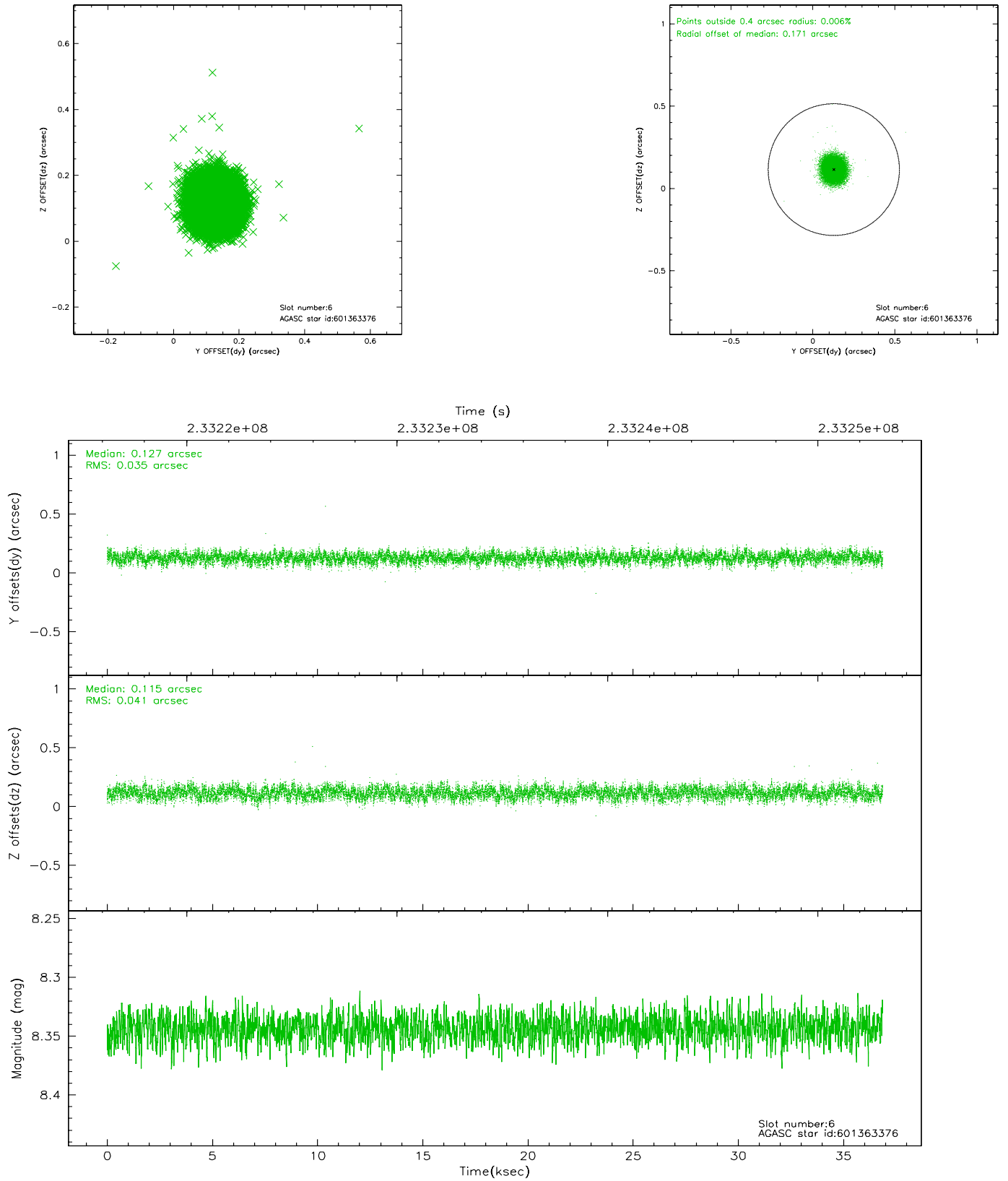
2.4.2 Slot 4



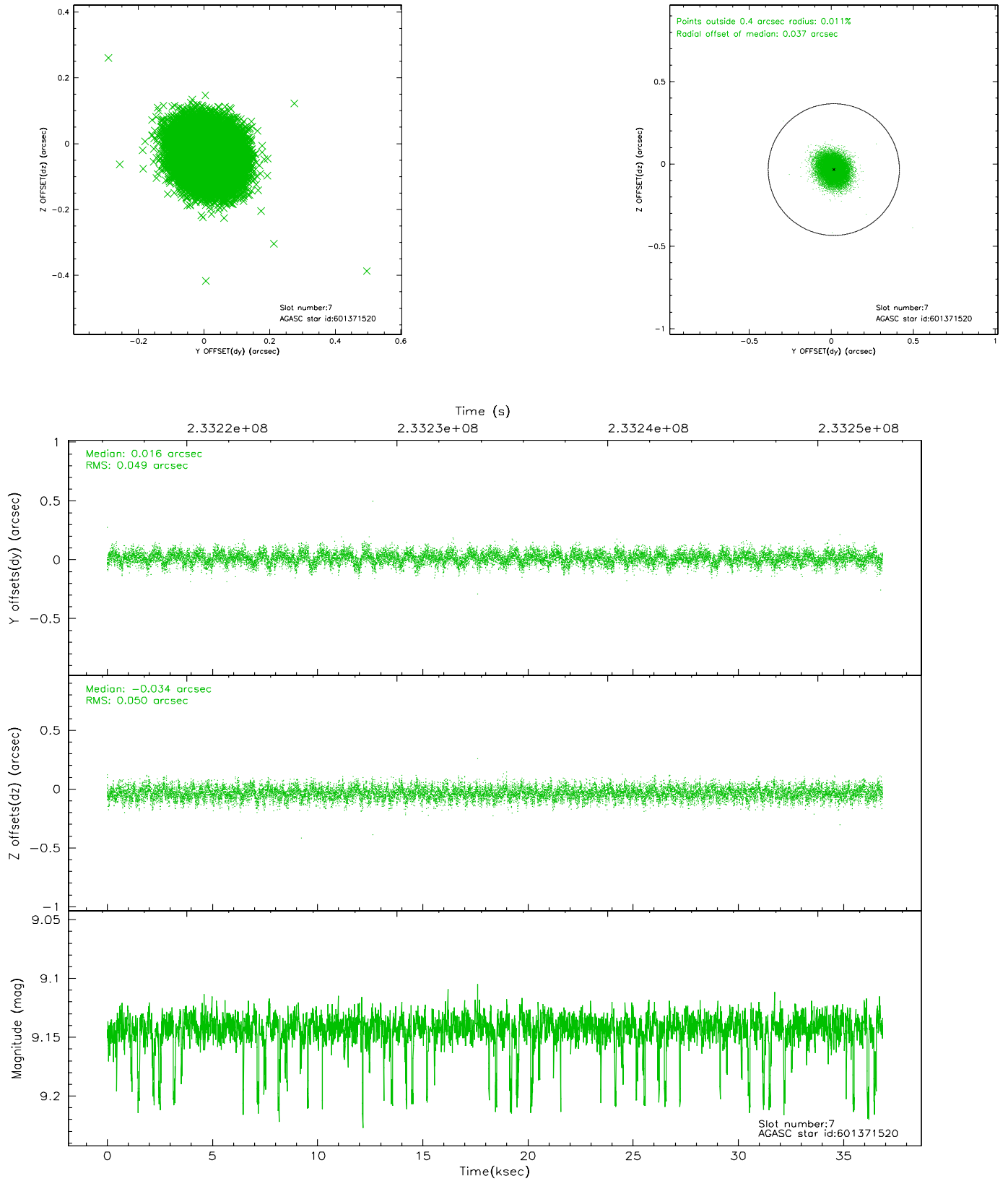
2.4.3 Slot 5



2.4.4 Slot 6

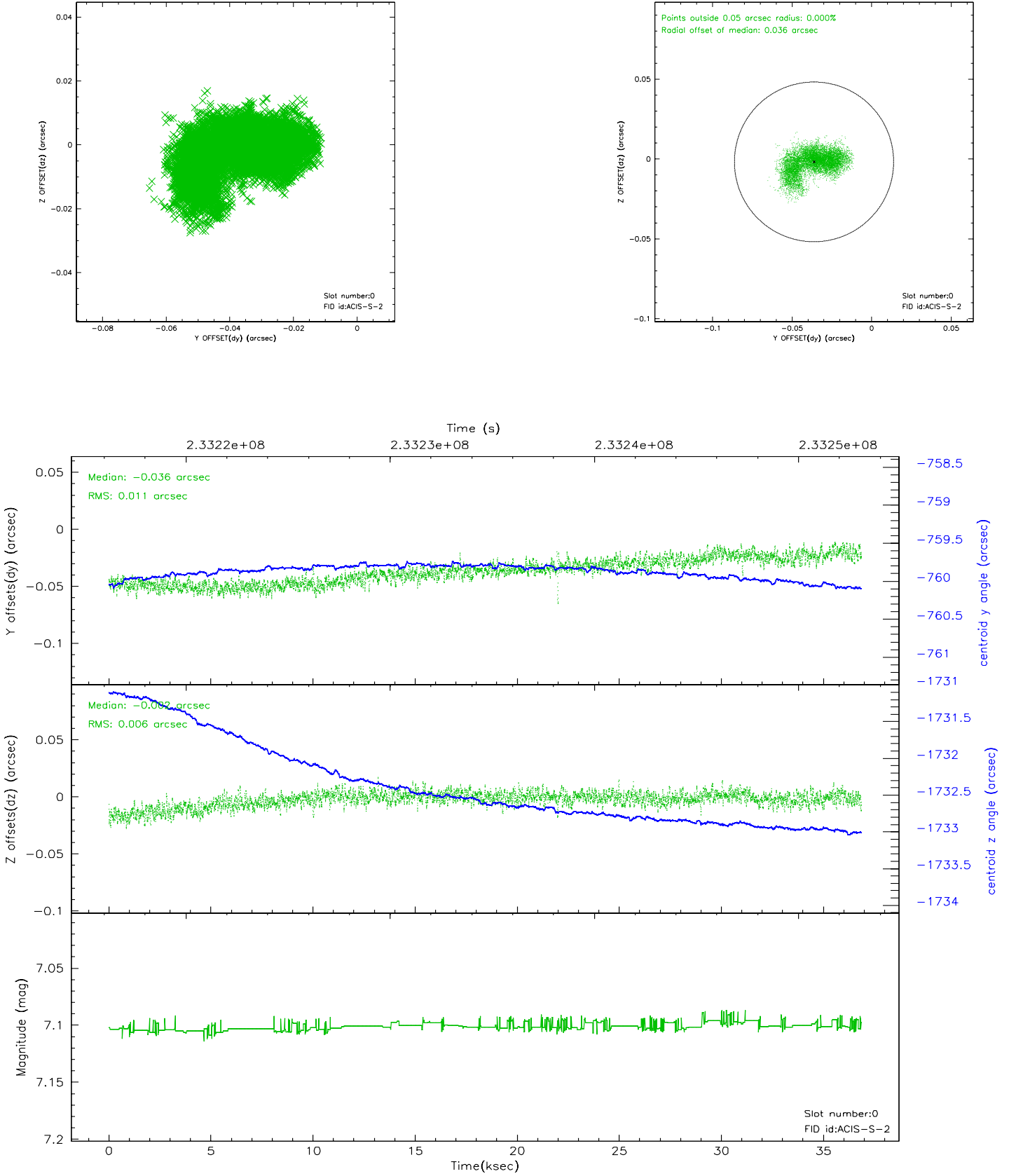


2.4.5 Slot 7

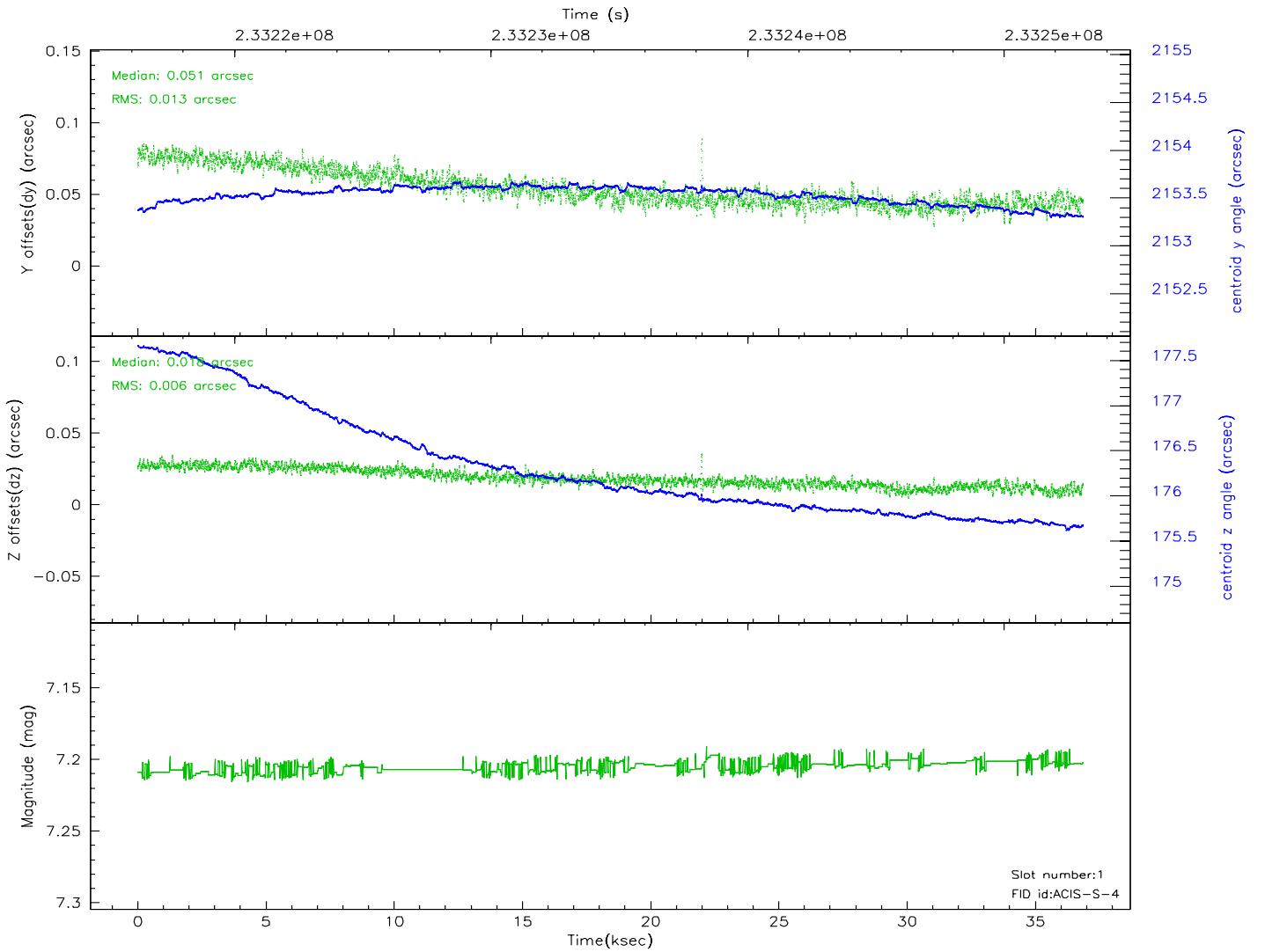
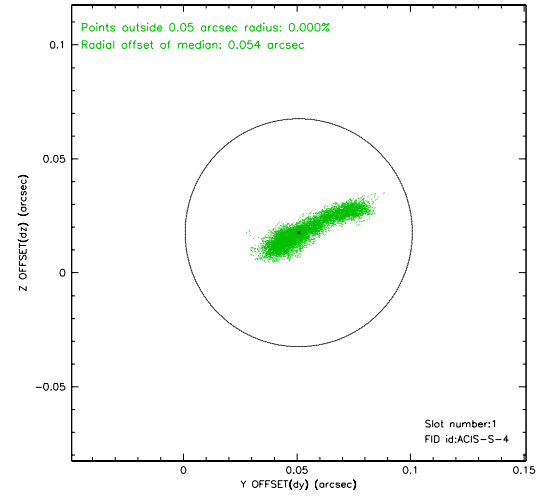
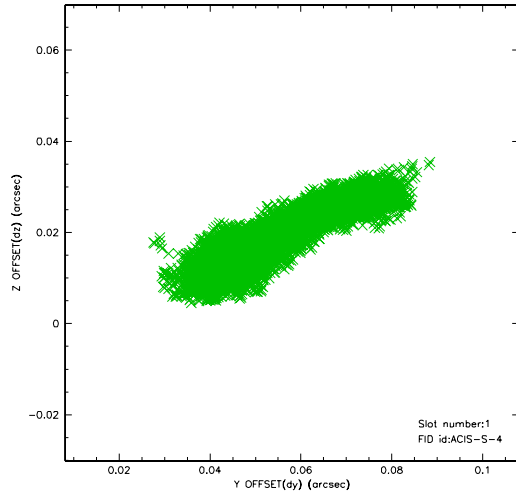


2.5 FID Slots

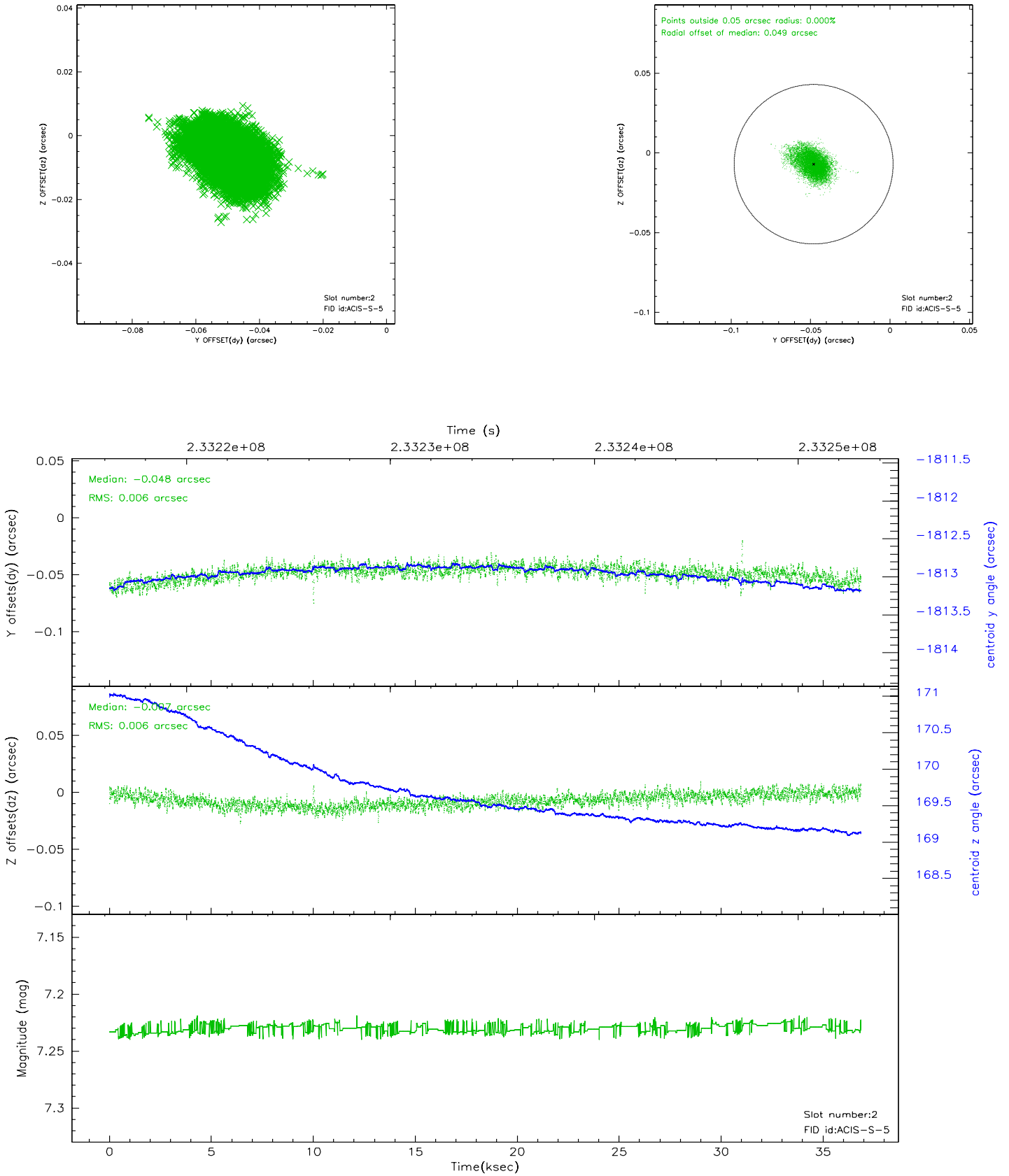
2.5.1 Slot 0



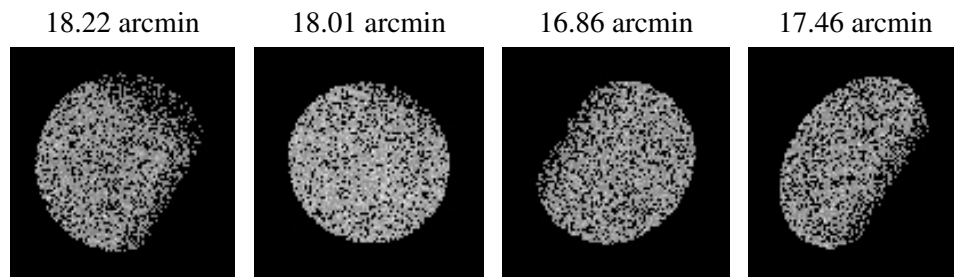
2.5.2 Slot 1



2.5.3 Slot 2



3 Point Sources



A Summary

A.1 Status

| | |
|----------------------------|---------------|
| V&V Scientist | Beth Sundheim |
| V&V Date (YYYY-MM-DD) | 2006.03.05 |
| V&V Edition | 1 |
| V&V Disposition and Status | OK |
| V&V Charge Time | 36.8676 |

A.2 Comments