

V&V Reference Report

L2 ASCDS Version : 7.6.7.1

Observation 5696 - L2 Version 002
Chandra X-Ray Center

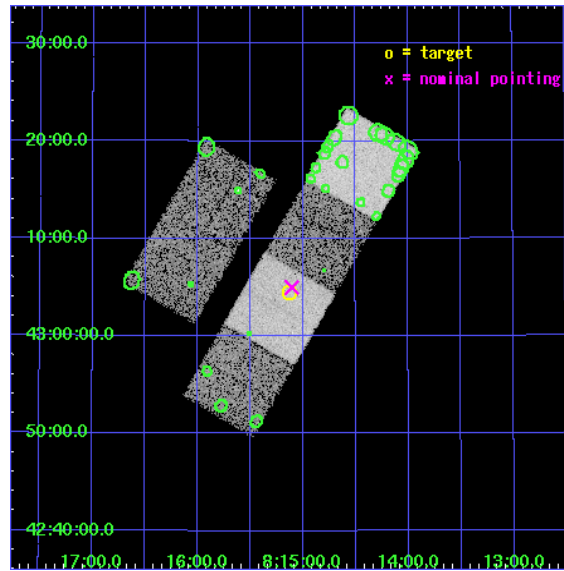
L2 Processing Date : Apr 7 2006

Contents

1	Front	2
2	OBI	3
2.1	OBI	3
2.1.1	Images	3
2.1.2	Bias	3
2.1.3	Parameters	4
2.1.4	Events	4
2.2	Compared Parameters	5
2.3	Aspect	6
2.4	Star Slots	9
2.4.1	Slot 3	9
2.4.2	Slot 4	10
2.4.3	Slot 5	11
2.4.4	Slot 6	12
2.4.5	Slot 7	13
2.5	FID Slots	14
2.5.1	Slot 0	14
2.5.2	Slot 1	15
2.5.3	Slot 2	16
3	Point Sources	17
A	Summary	18
A.1	Status	18
A.2	Comments	18

1 Front

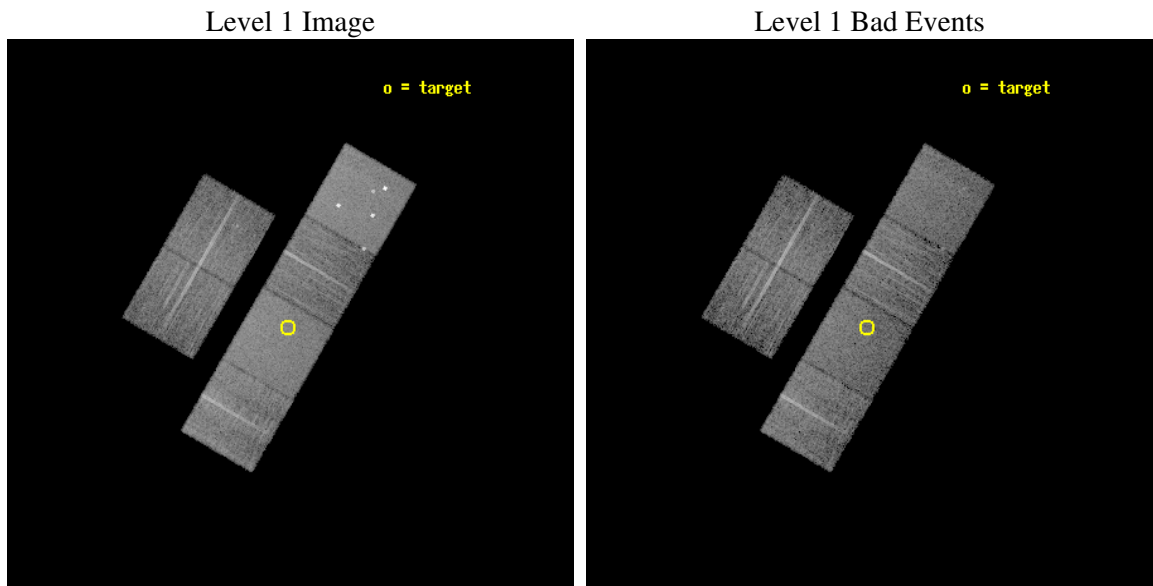
seq_num	701118
obs_id	5696
title	Studying the X-ray properties of SDSS candidate Type II quasars with exploratory Chandra observations
observer	Dr. Cristian Vignali
object	SDSS J081507.42+430427.2
dtcycle	0
cycle	P
ra_targ	123.780833
dec_targ	43.074222
ra_nom	123.77634533252
dec_nom	43.083299339154
roll_nom	120.0881301201
revision	2
ontime	8278.3999691606
livetime	8173.573884097
ontime2	8278.3999691606
ontime3	8278.3999691606
ontime5	8278.3999691606
ontime6	8278.3999691606
ontime7	8278.3999691606
ontime8	8278.3999691606
l2events	97606



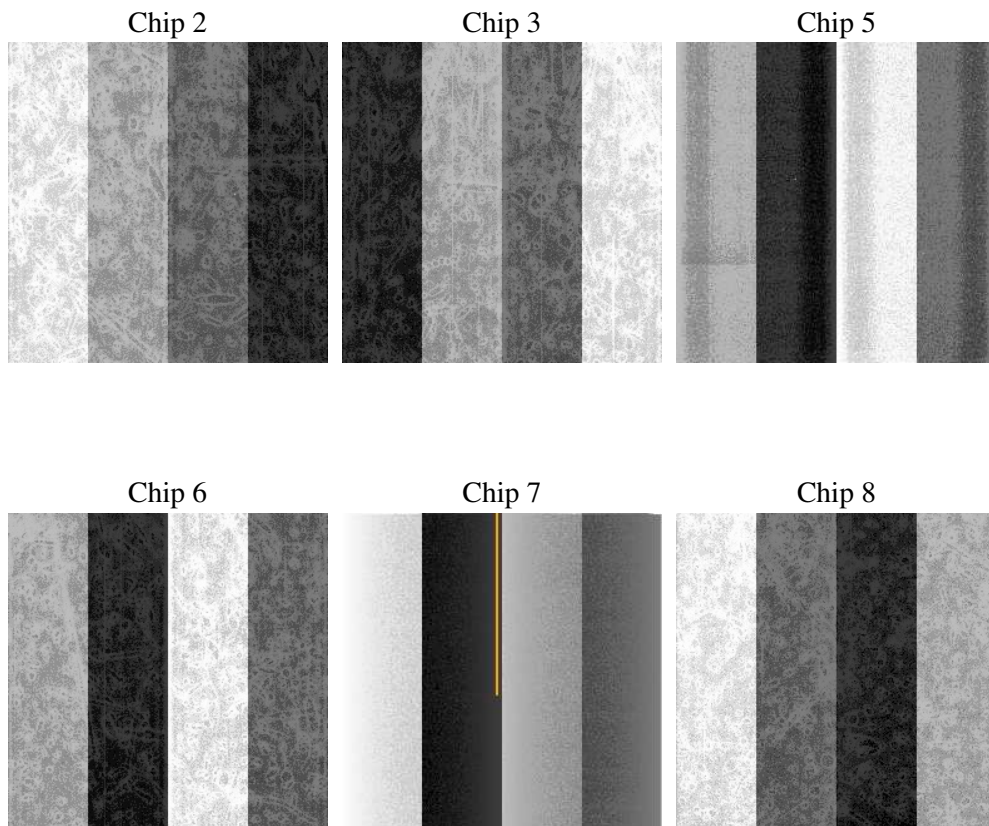
2 OBI

2.1 OBI

2.1.1 Images



2.1.2 Bias



2.1.3 Parameters

obi_num	0
ascdsver	7.6.7.1
caldbver	3.2.1
date	2006-04-07T13:37:03
revision	2

sched_exp_time	8320.000000
ontime	8280.7898032069
ontime2	8280.7898032069
ontime3	8280.7898032069
ontime5	8280.7898032069
ontime6	8280.7898032069
ontime7	8280.7898032069
ontime8	8280.7898032069
l1events	462833

2.1.4 Events

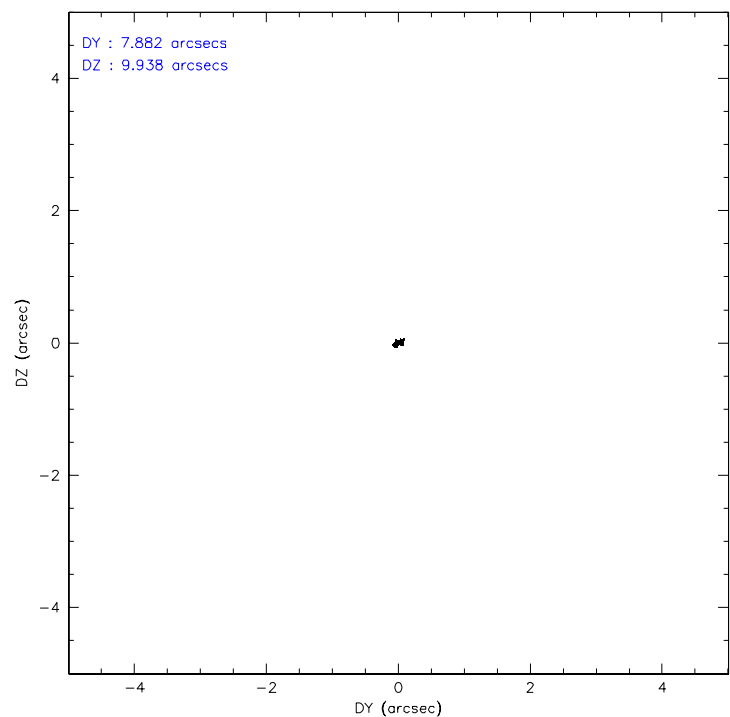
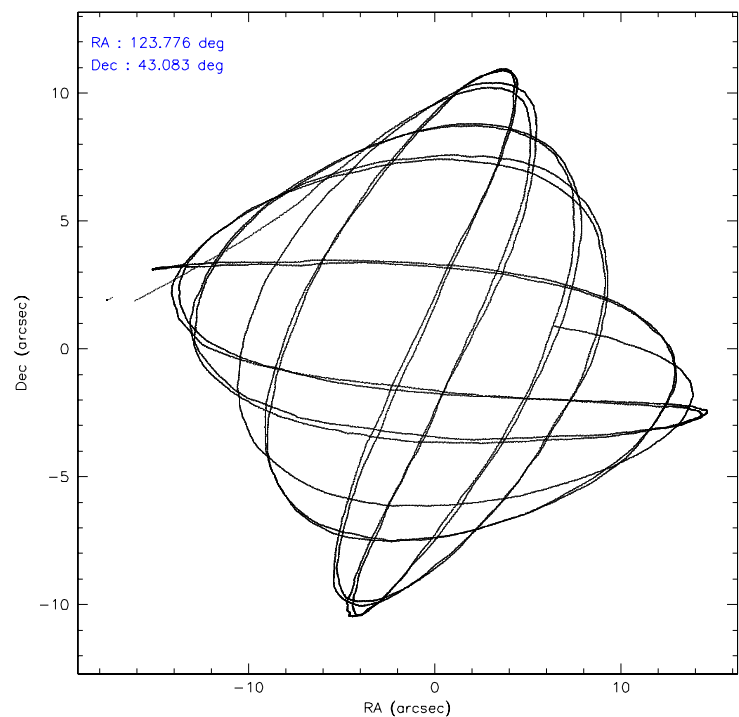
	ccd 2	ccd 3	ccd 5	ccd 6	ccd 7	ccd 8
level 1 events	66375	62109	102107	64940	85997	81305
rejected events	58697	54998	53148	57484	53513	64555
rejected %	88%	88%	52%	88%	62%	79%

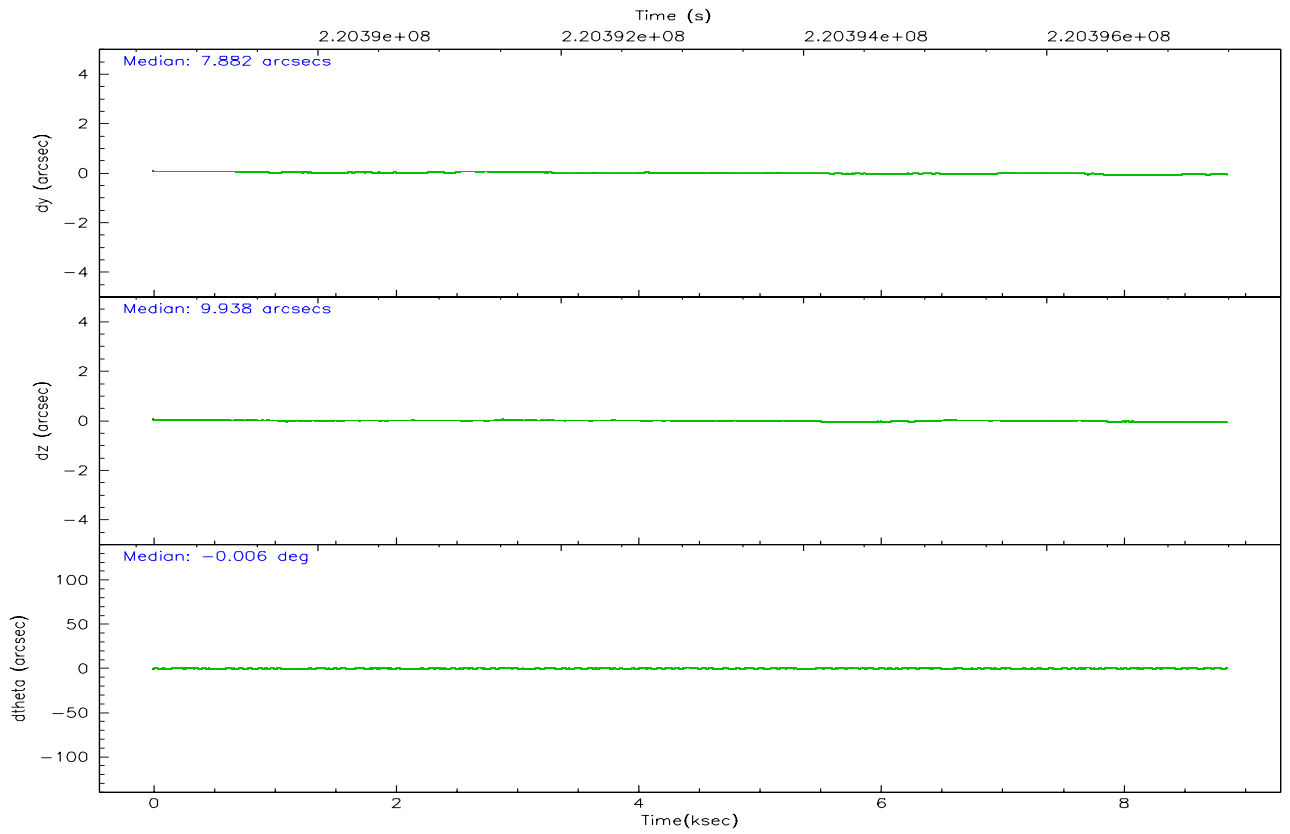
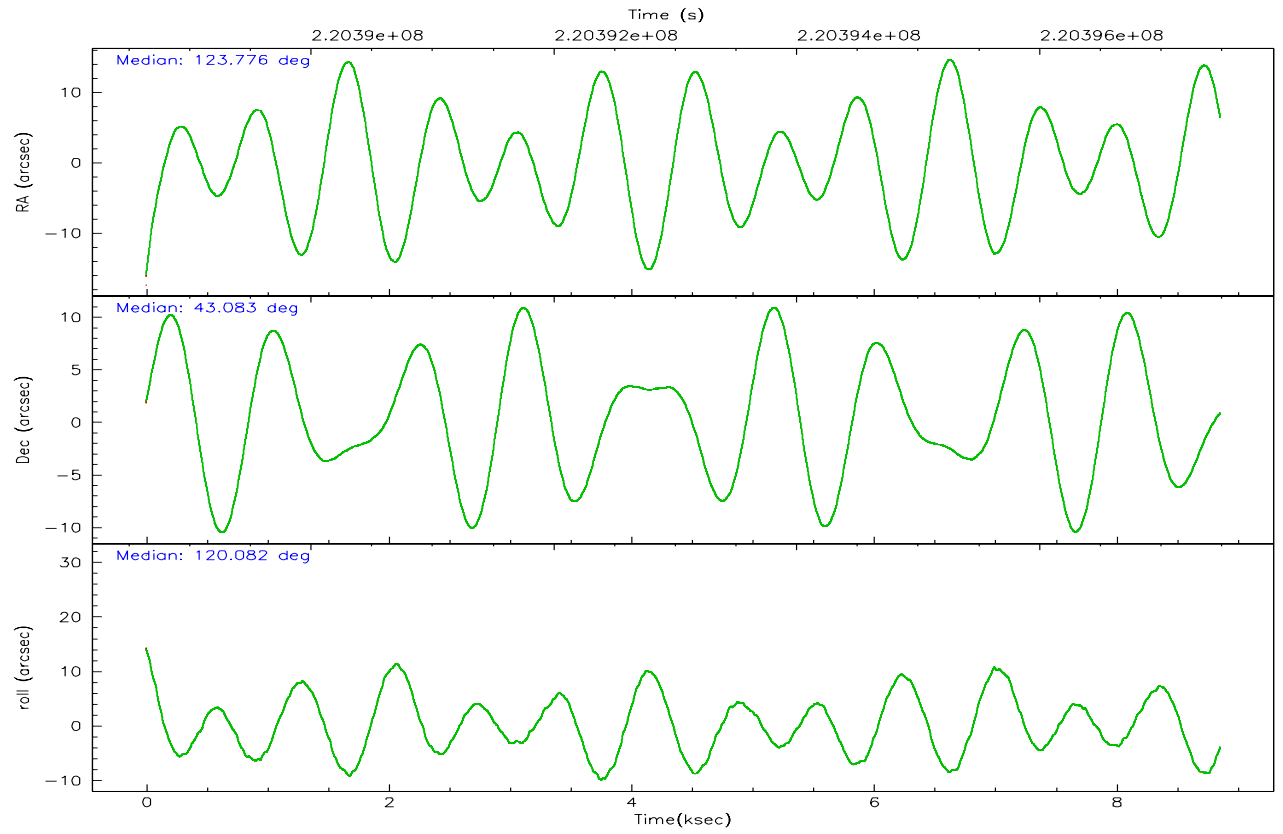
	ccd 2	ccd 3	ccd 5	ccd 6	ccd 7	ccd 8
grade 0 events	3357	3060	7886	2905	1693	5325
	5%	4%	7%	4%	1%	6%
grade 1 events	46	30	212	36	53	53
	0%	0%	0%	0%	0%	0%
grade 2 events	1597	1379	15041	1579	8095	3537
	2%	2%	14%	2%	9%	4%
grade 3 events	735	748	949	705	1517	2054
	1%	1%	0%	1%	1%	2%
grade 4 events	718	680	901	719	1489	1742
	1%	1%	0%	1%	1%	2%
grade 5 events	2587	2744	4476	2896	5624	3798
	3%	4%	4%	4%	6%	4%
grade 6 events	1275	1247	24195	1549	19706	4093
	1%	2%	23%	2%	22%	5%
grade 7 events	56060	52221	48447	54551	47820	60703
	84%	84%	47%	84%	55%	74%

2.2 Compared Parameters

Parameter	Planned	Actual	Parameter	Planned	Actual
Instrument	ACIS	ACIS	Obspar format version number	6	6
Detector	ACIS-235678	ACIS-235678	Obspar file type	PREDICTED	ACTUAL
Grating	NONE	NONE	Obspar update status	NONE	UPDATED
Data mode	FAINT	FAINT	On-chip summing requested	N	N
Observation mode	POINTING	POINTING	Subarray requested	NONE	NONE
Pointing RA	123.808863	123.7763453325164	Alternating exposures requested	N	N
Pointing Dec	43.070044	43.08329933915427	Primary exposure time	0.000000	3.2
Pointing Roll	119.909290	120.088130120104			
SIM focus pos (mm)	-0.684267	-0.6828225247311905			
SIM defocus (mm)	0	0.001444936568705701			
SIM translation stage pos (mm)	-190.132523	-190.1400660498719			
SIM translation stage offset (mm)	0	0.00754346686406393			
Observation start time	220389171.184000	220388035.76282			
Observation start date	2004-12-25T19:11:47	2004-12-25T18:53:55			
Observation end time	220397491.184000	220398390.82578			
Observation end date	2004-12-25T21:30:27	2004-12-25T21:46:30			
Read mode	TIMED	TIMED			

2.3 Aspect



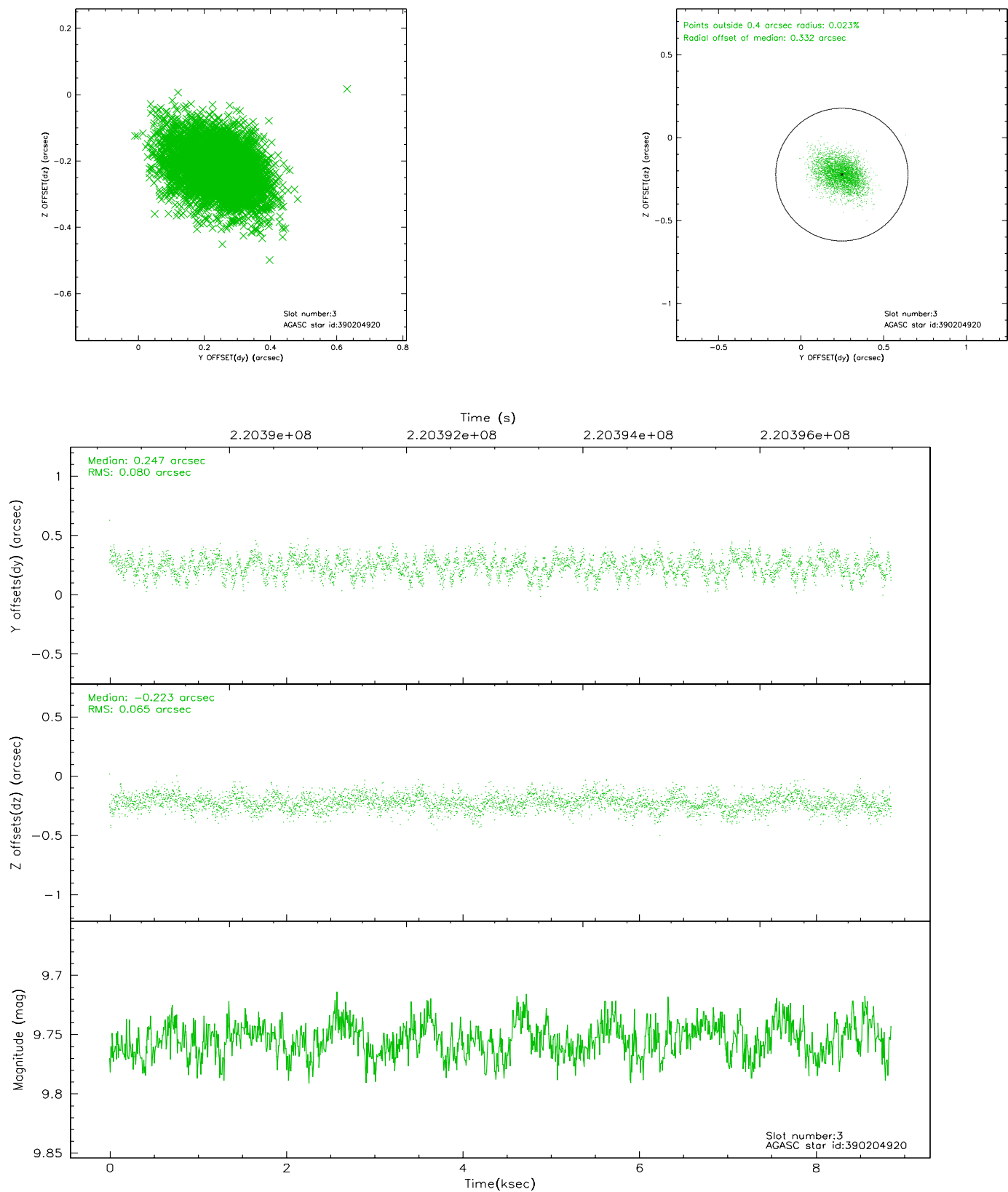


Slot Statistics

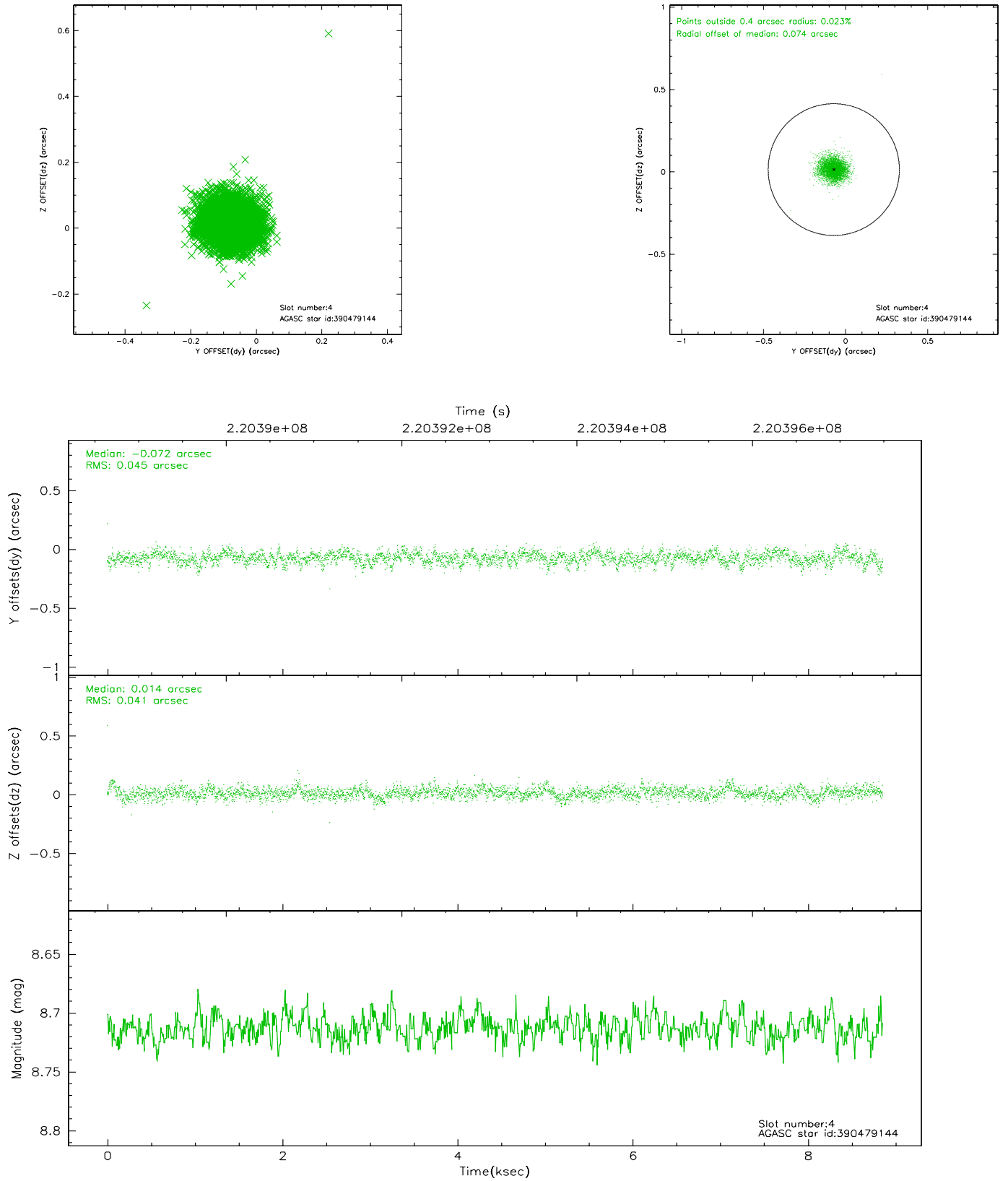
slot	status	id	mag	n_pts	med_dy	med_dz	dr1	dr2	ra	dec	mean_y	mean_z
0	FID	ACIS-S-1	7.19	2161	0.003	-0.004	0.007	0.012	0.000000	0.000000	935.39	-1726.81
1	FID	ACIS-S-4	7.21	2161	0.049	0.006	0.006	0.010	0.000000	0.000000	2153.17	176.73
2	FID	ACIS-S-5	7.23	2161	-0.079	0.011	0.006	0.010	0.000000	0.000000	-1812.79	170.99
3	GUIDE	390204920	9.75	4319	0.247	-0.223	0.109	0.180	123.432047	42.449494	-1435.23	1980.48
4	GUIDE	390479144	8.71	4317	-0.072	0.014	0.064	0.105	122.869472	43.407179	2288.79	1518.99
5	GUIDE	390479736	8.83	4313	-0.192	-0.048	0.068	0.108	122.902361	43.267931	1813.89	1698.99
6	GUIDE	390600952	7.90	4320	-0.014	0.097	0.068	0.106	124.473847	43.409805	199.89	-2120.02
7	GUIDE	390608272	9.31	4320	0.034	0.165	0.084	0.135	124.648615	42.884668	-1673.20	-1593.00

2.4 Star Slots

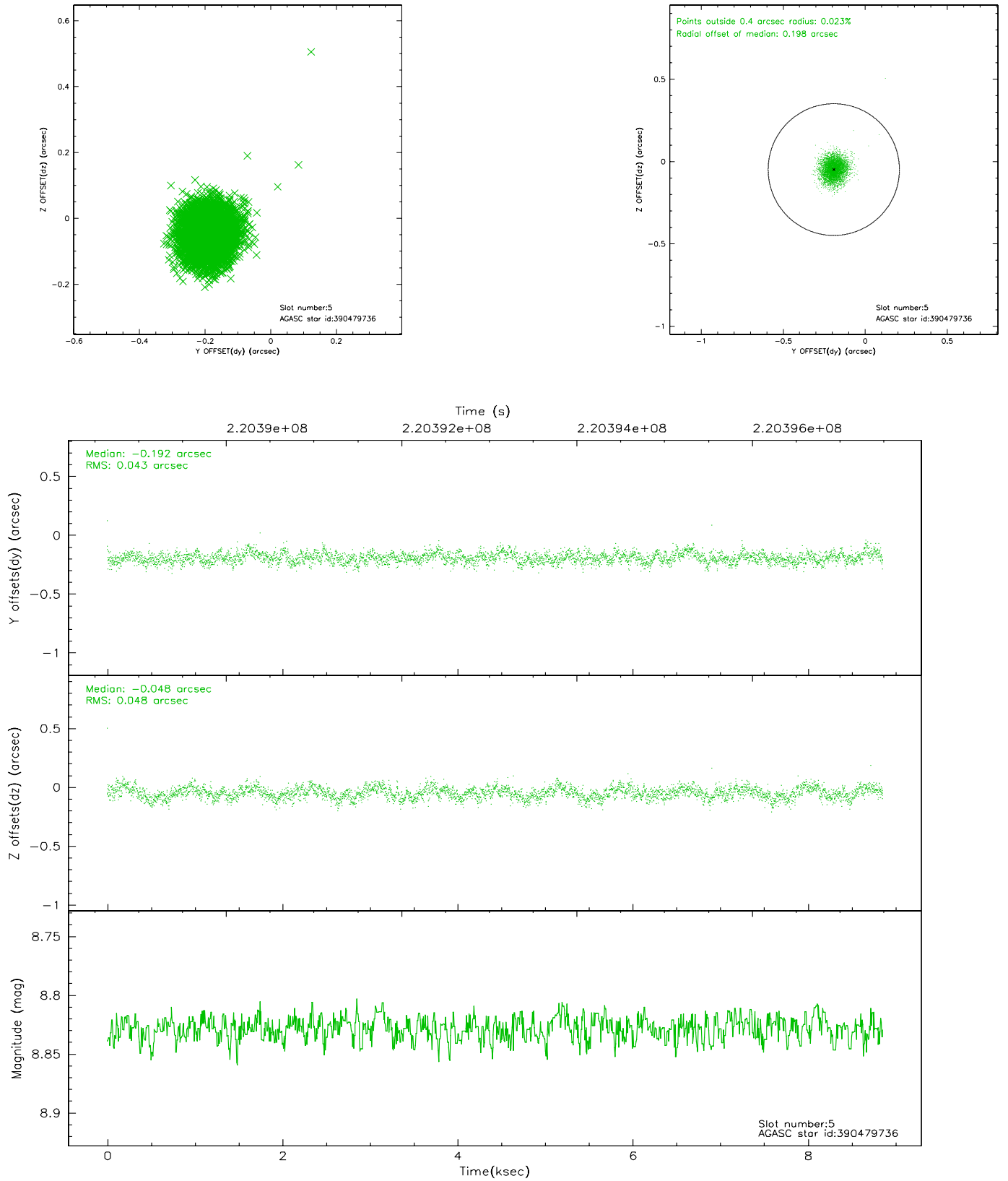
2.4.1 Slot 3



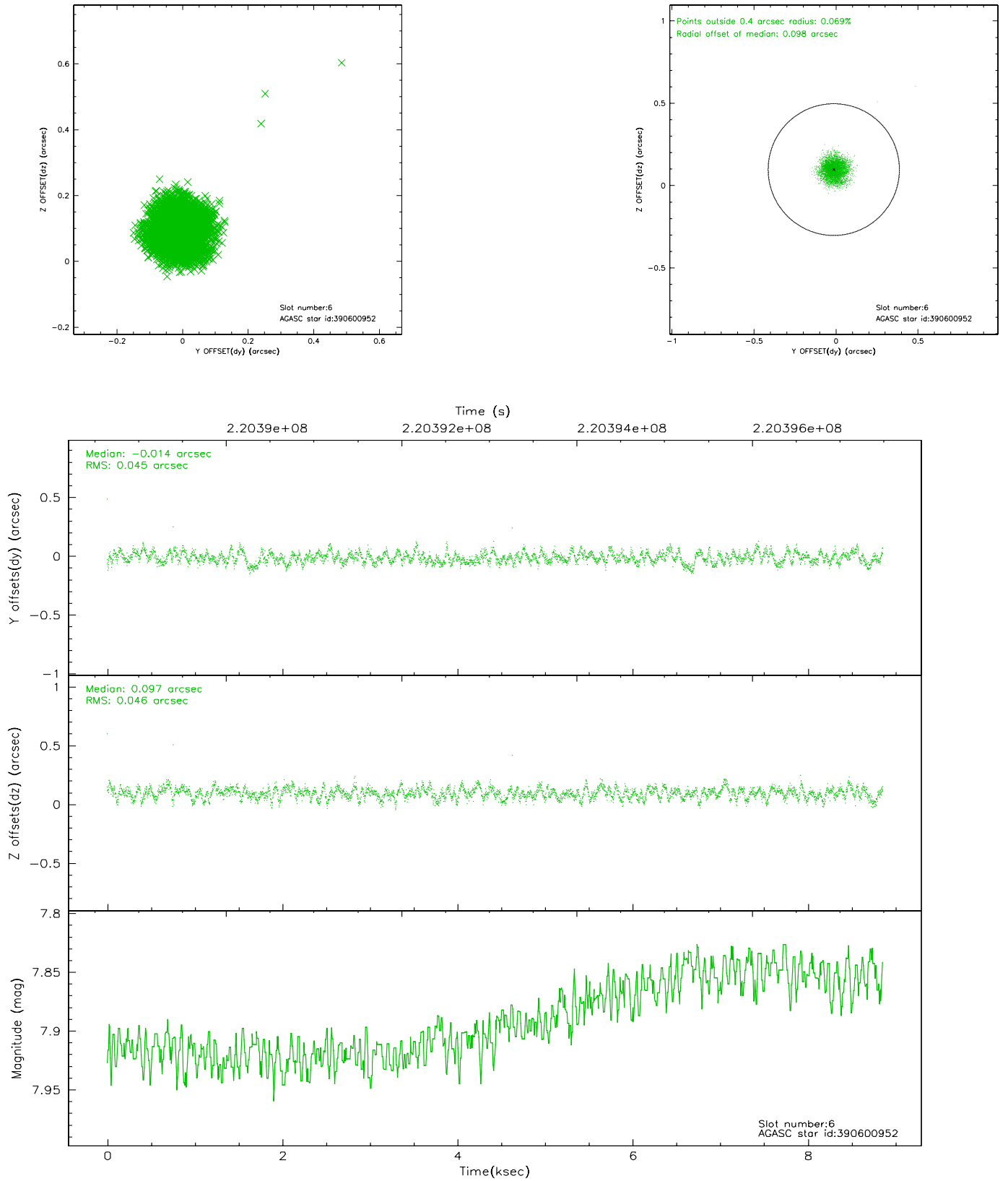
2.4.2 Slot 4



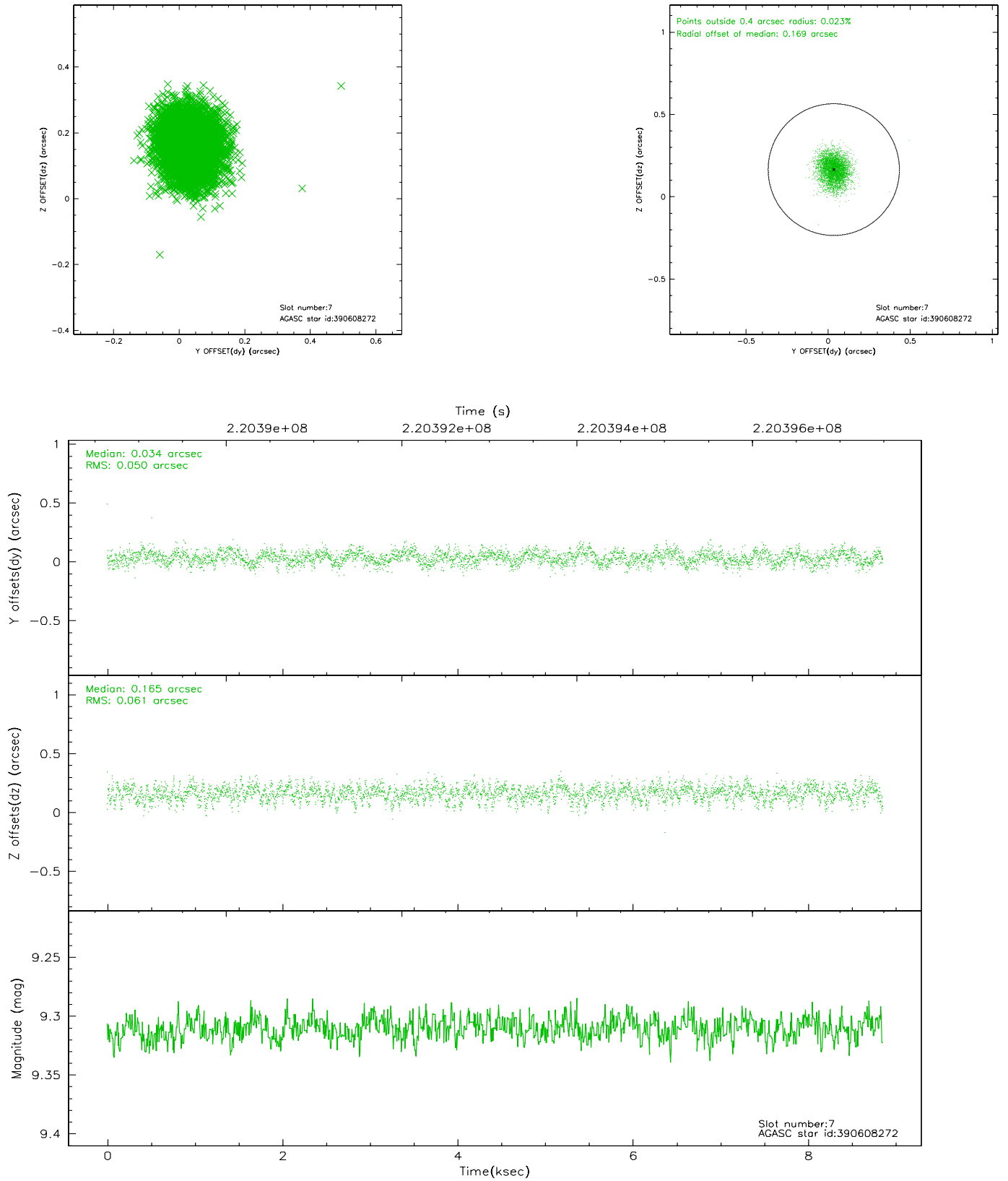
2.4.3 Slot 5



2.4.4 Slot 6

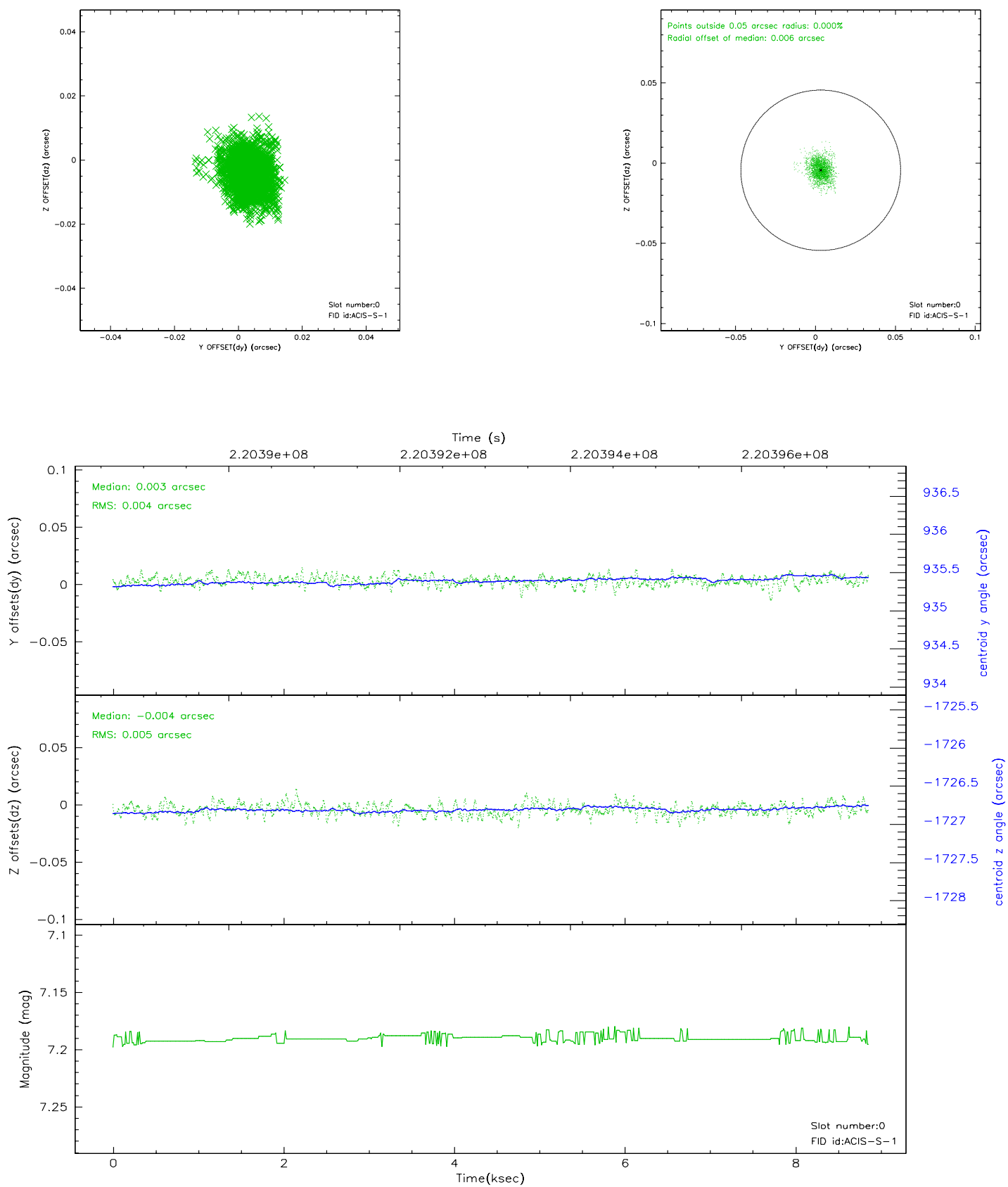


2.4.5 Slot 7

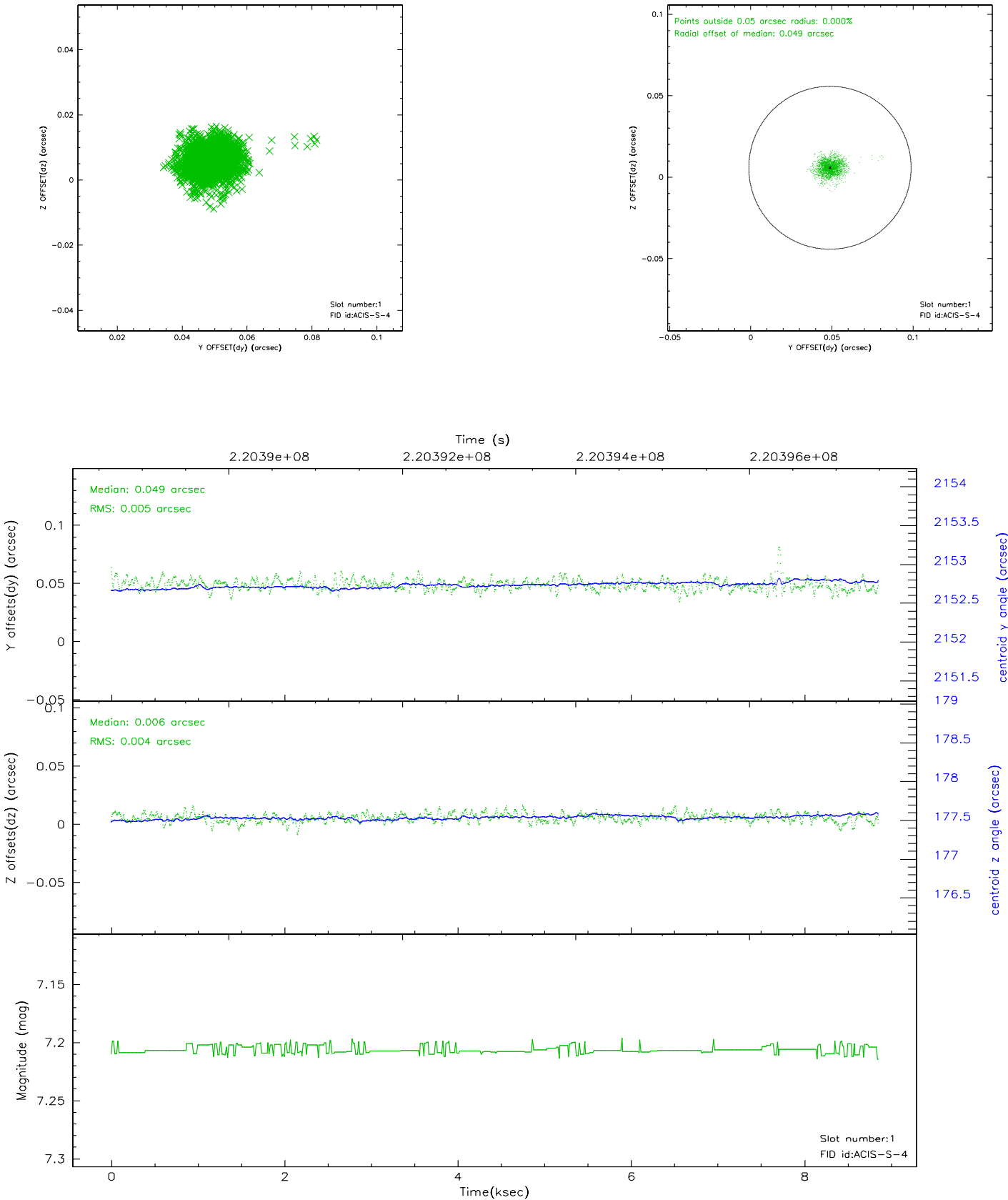


2.5 FID Slots

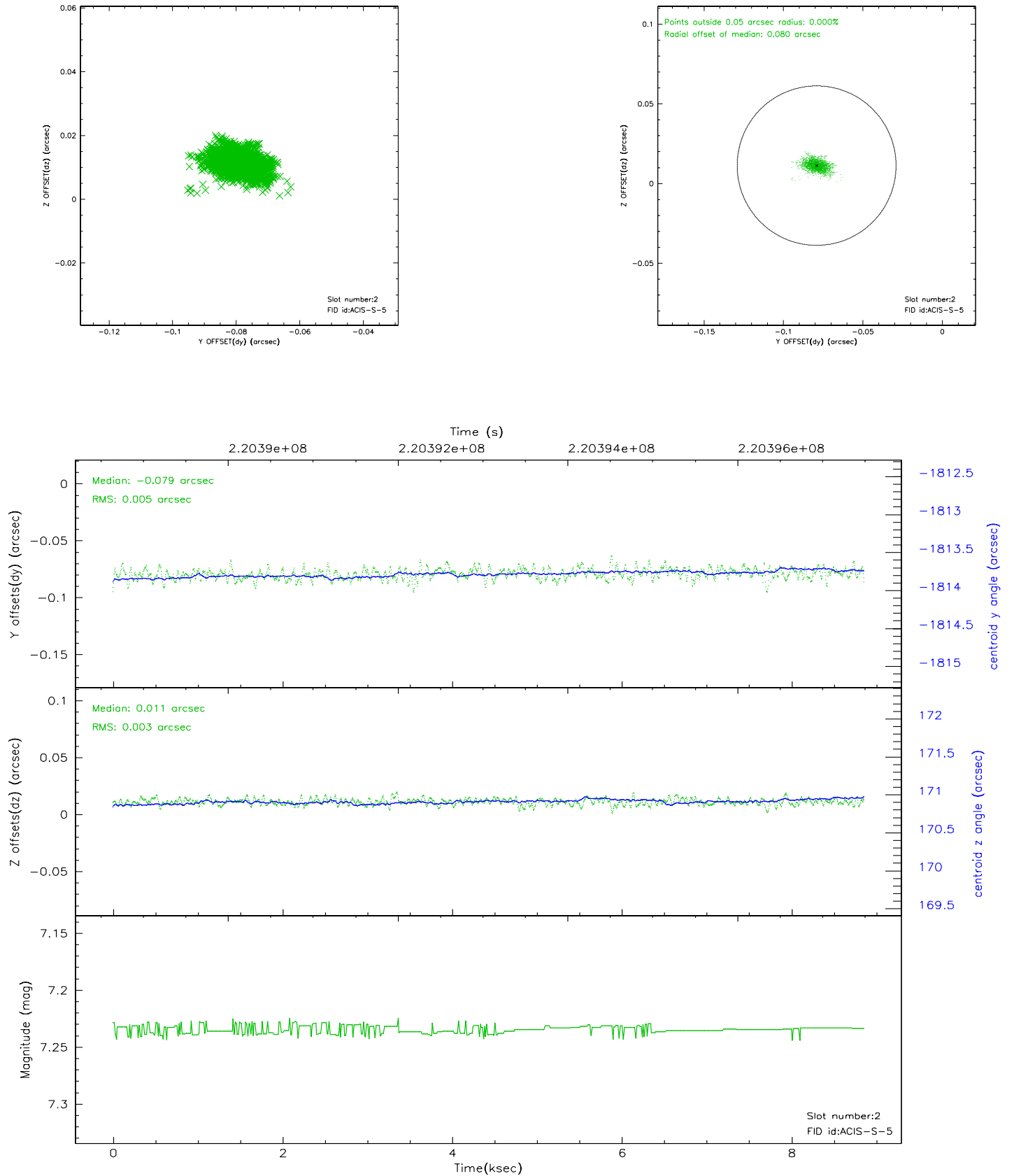
2.5.1 Slot 0



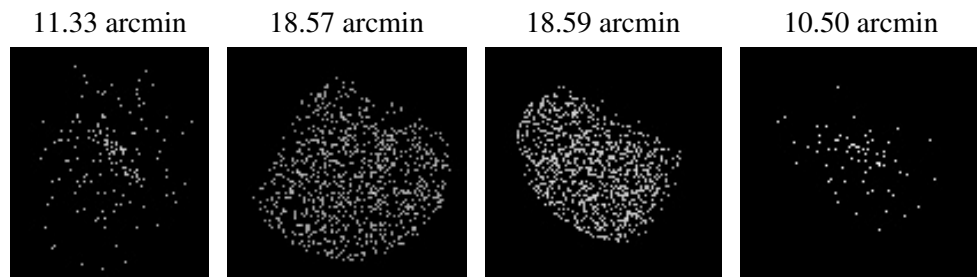
2.5.2 Slot 1



2.5.3 Slot 2



3 Point Sources



A Summary

A.1 Status

V&V Scientist	Beth Sundheim
V&V Date (YYYY-MM-DD)	2006.04.07
V&V Edition	1
V&V Disposition and Status	OK
V&V Charge Time	8.278399

A.2 Comments