

# V&V Reference Report

## L2 ASCDS Version : 8.5.1

Observation 5695 - L2 Version 3  
Chandra X-Ray Center

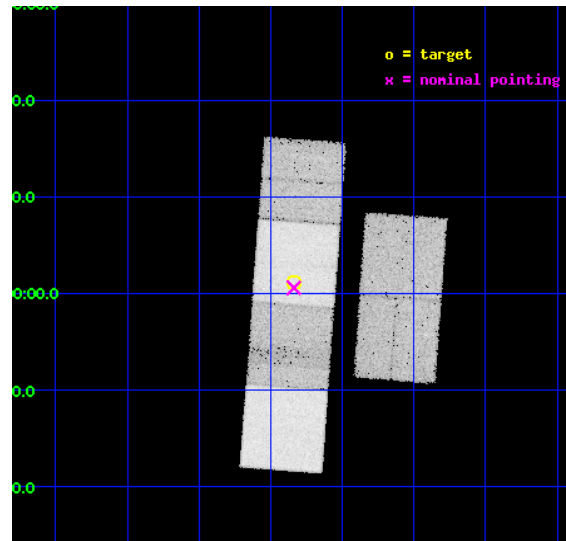
L2 Processing Date : Dec 18 2012

## Contents

<b>1</b>	<b>Front</b>	<b>2</b>
<b>2</b>	<b>OBI</b>	<b>3</b>
2.1	OBI . . . . .	3
2.1.1	Images . . . . .	3
2.1.2	Bias . . . . .	3
2.1.3	Parameters . . . . .	4
2.1.4	Events . . . . .	4
2.2	Compared Parameters . . . . .	5
2.3	Aspect . . . . .	6
2.4	Star Slots . . . . .	9
2.4.1	Slot 3 . . . . .	9
2.4.2	Slot 4 . . . . .	10
2.4.3	Slot 5 . . . . .	11
2.4.4	Slot 6 . . . . .	12
2.4.5	Slot 7 . . . . .	13
2.5	FID Slots . . . . .	14
2.5.1	Slot 0 . . . . .	14
2.5.2	Slot 1 . . . . .	15
2.5.3	Slot 2 . . . . .	16
<b>A</b>	<b>Summary</b>	<b>17</b>
A.1	Status . . . . .	17
A.2	Comments . . . . .	17

# 1 Front

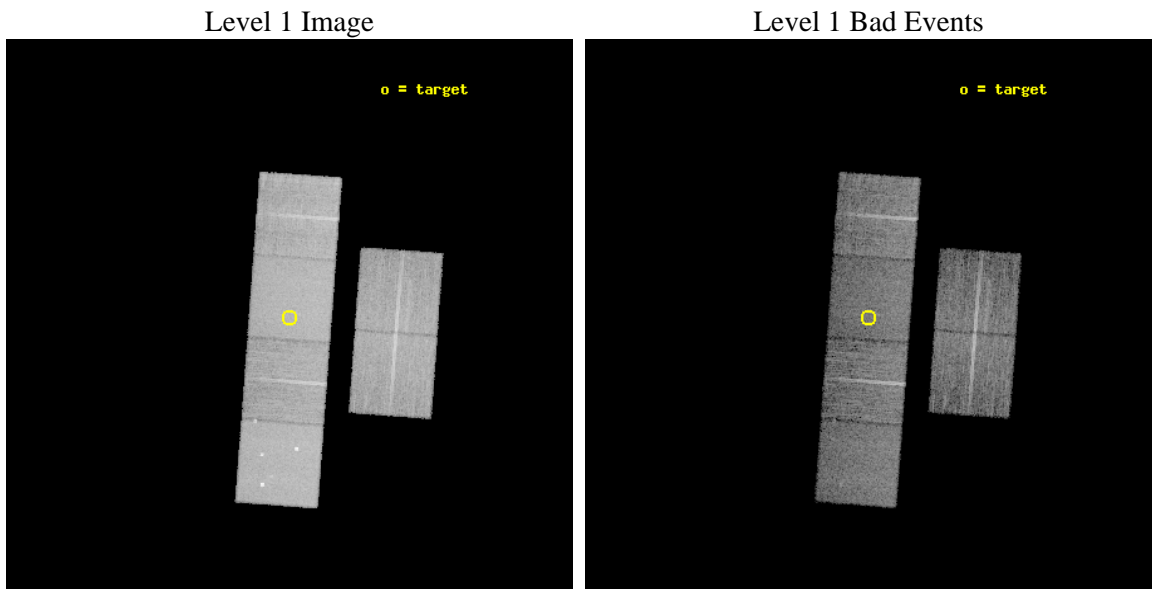
seq_num	701117	Sequence number
obs_id	5695	Observation id
title	Studying the X-ray properties of SDSS candidate Type II quasars with exploratory Chandra observations	Proposal title
observer	Dr Cristian Vignali	Principal investigator
object	SDSS J031950.54-005850.6	Source name
dtcycle	0	&#160
cycle	P	events from which exps? Prim/Second/Both
ra_targ	49.960417	Observer's specified target RA [deg]
dec_targ	-0.980722	Observer's specified target Dec [deg]
ra_nom	49.959437336679	Nominal RA [deg]
dec_nom	-0.99031634187861	Nominal Dec [deg]
roll_nom	274.25157388016	Nominal Roll [deg]
revision	3	Processing version of data
ontime	11637.101518482	Sum of GTIs [s]
livetime	11489.745532034	Livetime [s]
ontime2	11637.142558485	Sum of GTIs [s]
ontime3	11636.978398472	Sum of GTIs [s]
ontime5	11637.060478479	Sum of GTIs [s]
ontime6	11637.019438475	Sum of GTIs [s]
ontime7	11637.101518482	Sum of GTIs [s]
ontime8	11636.937358499	Sum of GTIs [s]
l2events	220894	Number of level 2 events



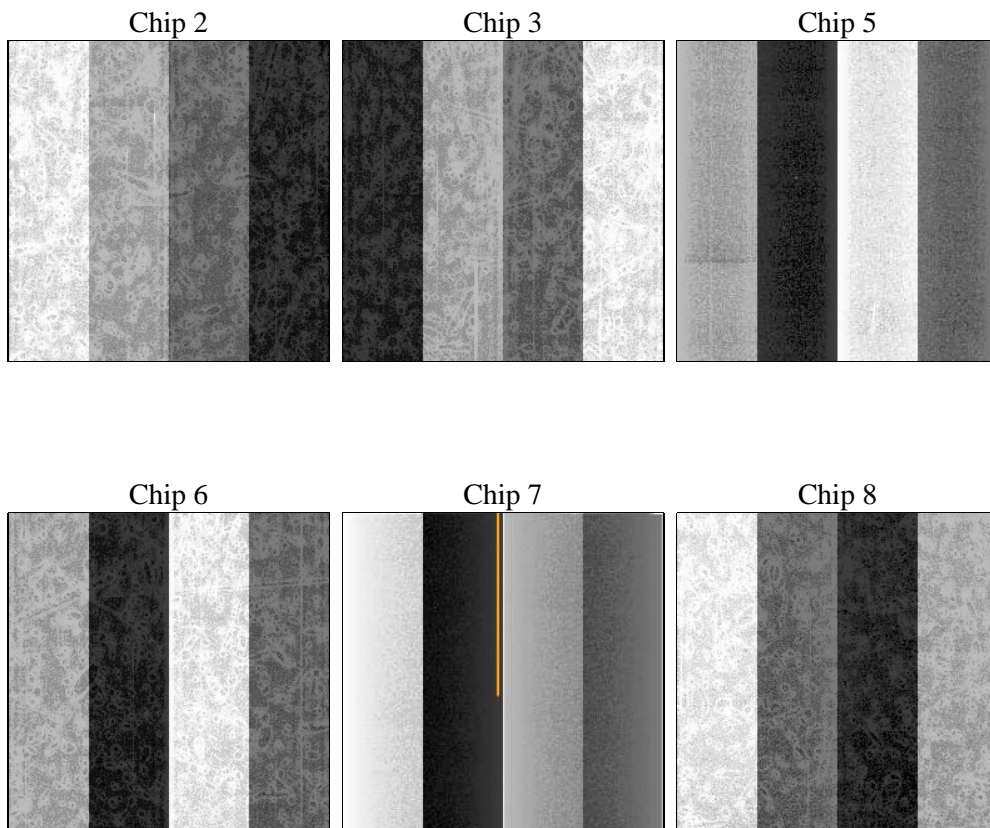
## 2 OBI

### 2.1 OBI

#### 2.1.1 Images



#### 2.1.2 Bias



### 2.1.3 Parameters

obi_num	1	Obi number	sched_exp_time	11471.664000	[s] Scheduled observation exposure time
ascdsver	8.5.1	Processing system revision	ontime	11637.101518482	Sum of GTIs [s]
caldsver	4.5.5	&#160	ontime2	11637.142558485	Sum of GTIs [s]
date	2012-12-18T07:02:38	Date and time of file creation	ontime3	11636.978398472	Sum of GTIs [s]
revision	3	Processing version of data	ontime5	11637.060478479	Sum of GTIs [s]
			ontime6	11637.019438475	Sum of GTIs [s]
			ontime7	11637.101518482	Sum of GTIs [s]
			ontime8	11636.937358499	Sum of GTIs [s]
			l1events	708928	Number of level 1 events

### 2.1.4 Events

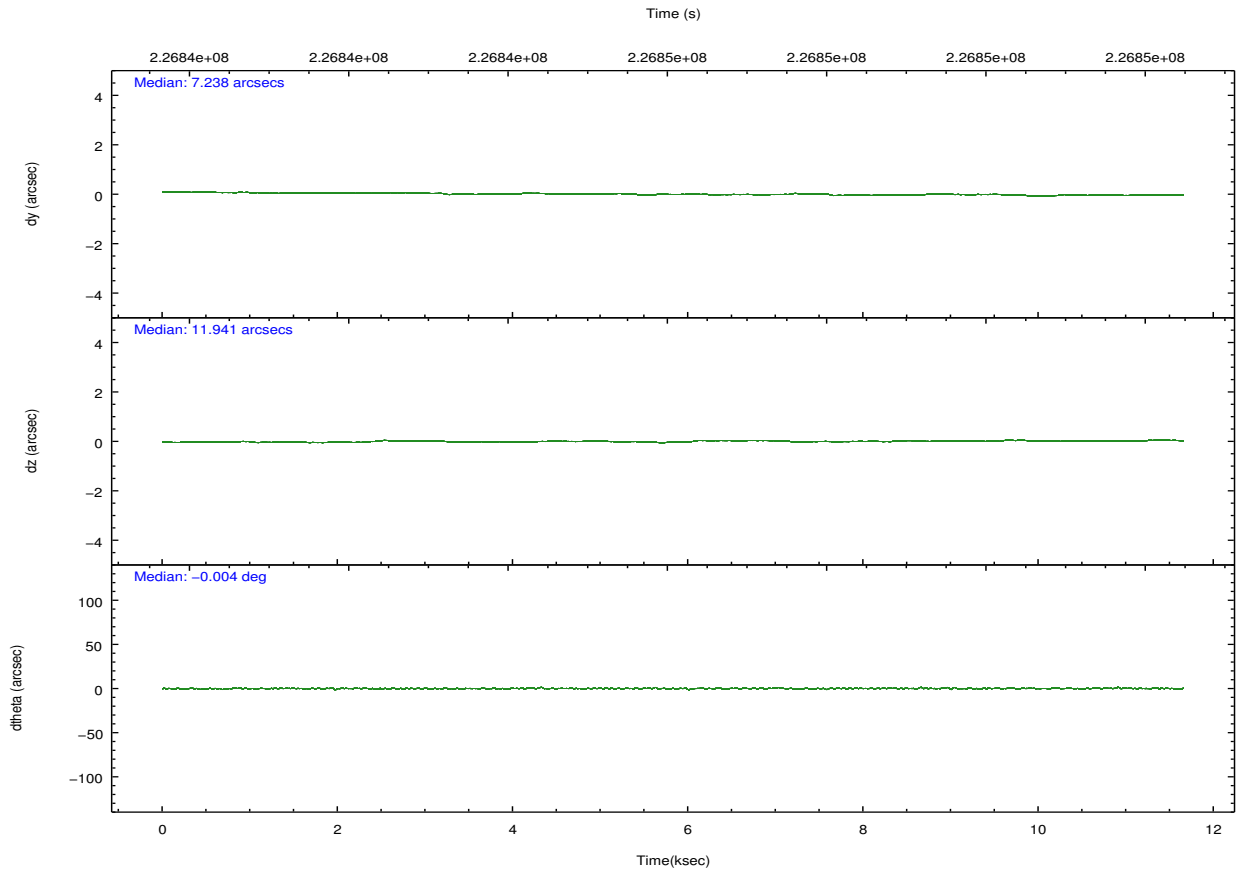
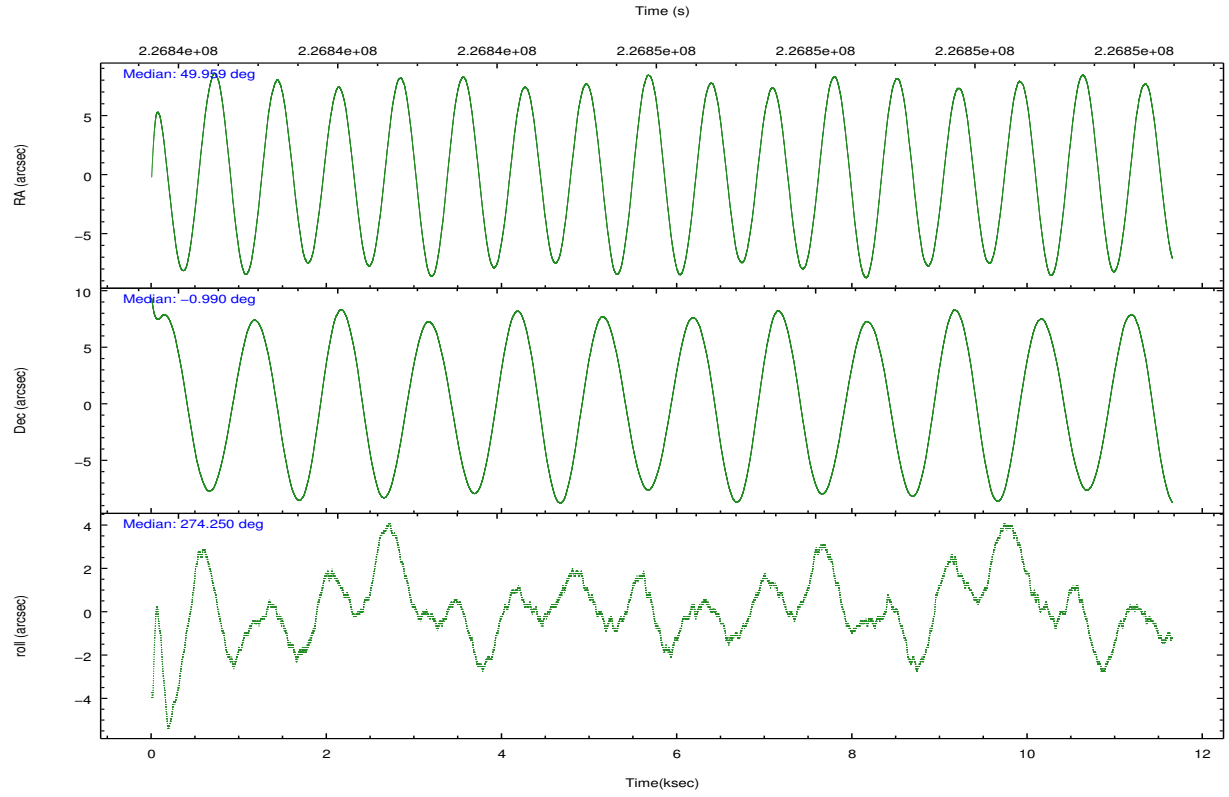
	ccd 2	ccd 3	ccd 5	ccd 6	ccd 7	ccd 8		ccd 2	ccd 3	ccd 5	ccd 6	ccd 7	ccd 8
level 1 events	100921	97143	147452	101601	135248	126563	grade 0 events	14468	13779	10237	12686	6673	17177
rejected events	77230	73707	71299	78254	70198	88753		14%	14%	6%	12%	4%	13%
rejected %	76%	75%	48%	77%	51%	70%	grade 1 events	108	97	345	74	132	120
								0%	0%	0%	0%	0%	0%
							grade 2 events	3522	3524	22627	4237	12445	7130
								3%	3%	15%	4%	9%	5%
							grade 3 events	1479	1580	3040	1512	5360	3061
								1%	1%	2%	1%	3%	2%
							grade 4 events	1452	1586	2994	1400	5354	2949
								1%	1%	2%	1%	3%	2%
							grade 5 events	3477	3977	9633	3983	11395	5257
								3%	4%	6%	3%	8%	4%
							grade 6 events	2800	2999	37295	3544	35273	7574
								2%	3%	25%	3%	26%	5%
							grade 7 events	73615	69601	61281	74165	58616	83295
								72%	71%	41%	72%	43%	65%



## 2.2 Compared Parameters

Parameter	Planned	Actual	Parameter	Planned	Actual
Instrument	ACIS	ACIS	Obspar format version number	7	7
Detector	ACIS-235678	ACIS-235678	Obspar file type	PREDICTED	ACTUAL
Grating	NONE	NONE	Obspar update status	NONE	UPDATED
Data mode	FAINT	FAINT	Number of optional ACIS chips dropped	0	0
Observation mode	POINTING	POINTING	On-chip summing requested	N	N
[deg] Pointing RA	49.943802	49.95943733667949	Subarray requested	NONE	NONE
[deg] Pointing Dec	-0.968046	-0.9903163418786134	Alternating exposures requested	N	N
[deg] Pointing Roll	274.094691	274.2515738801591	[s] Primary exposure time	0.000000	3.2
[mm] SIM focus pos	-0.684267	-0.6828225247311905			
[mm] SIM defocus	0	0.001444936568705701			
[mm] SIM translation stage pos	-190.132523	-190.1400660498719			
[mm] SIM translation stage offset	0	0.00754346686406393			
[s] Observation start time (MET)	226840428.184000	226839363.50432			
Observation start date	2005-03-10T11:12:44	2005-03-10T10:56:03			
[s] Observation end time (MET)	226851900.184000	226852120.6549			
Observation end date	2005-03-10T14:23:56	2005-03-10T14:28:40			
Read mode	TIMED	TIMED			

## 2.3 Aspect

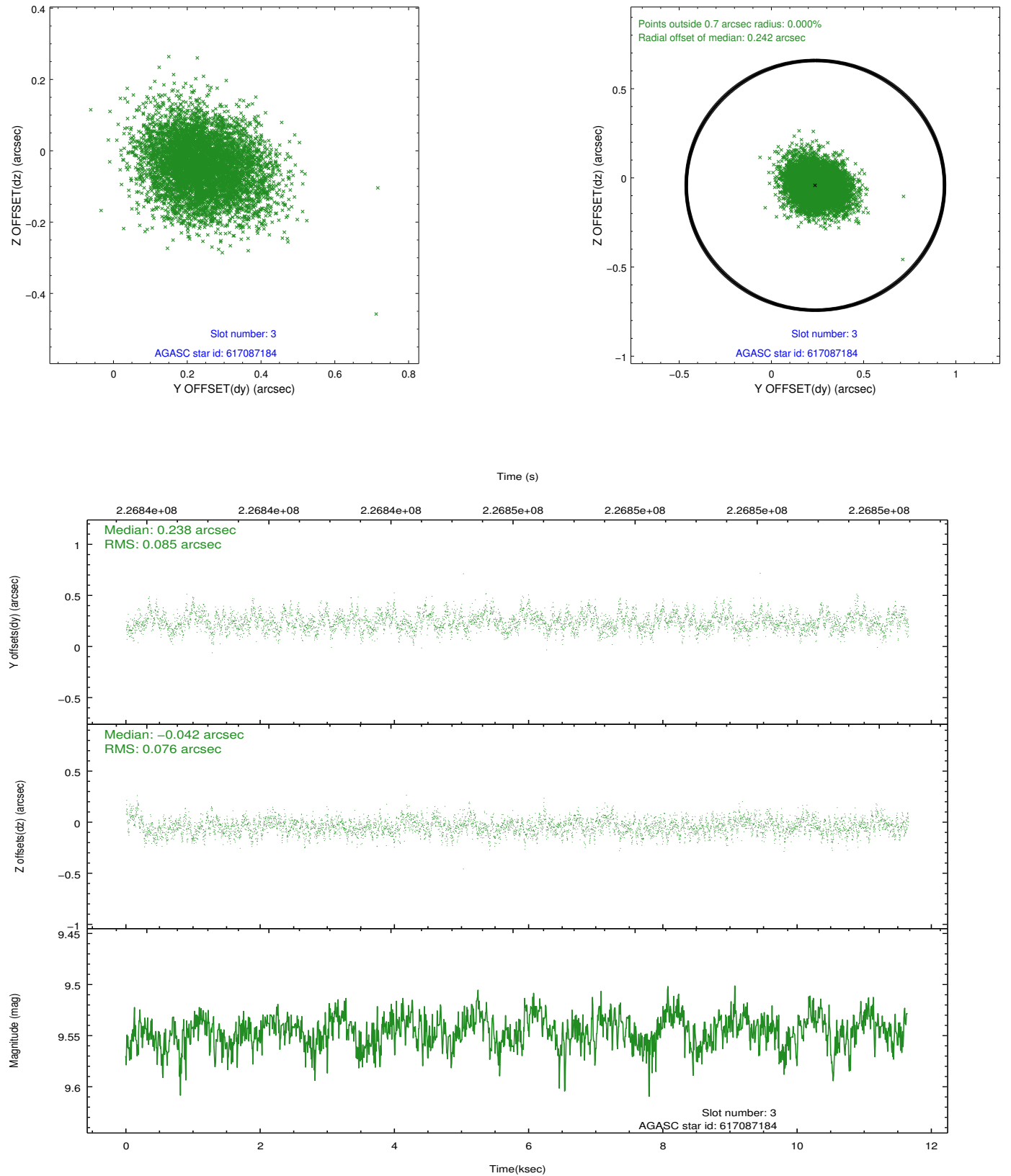


### Slot Statistics

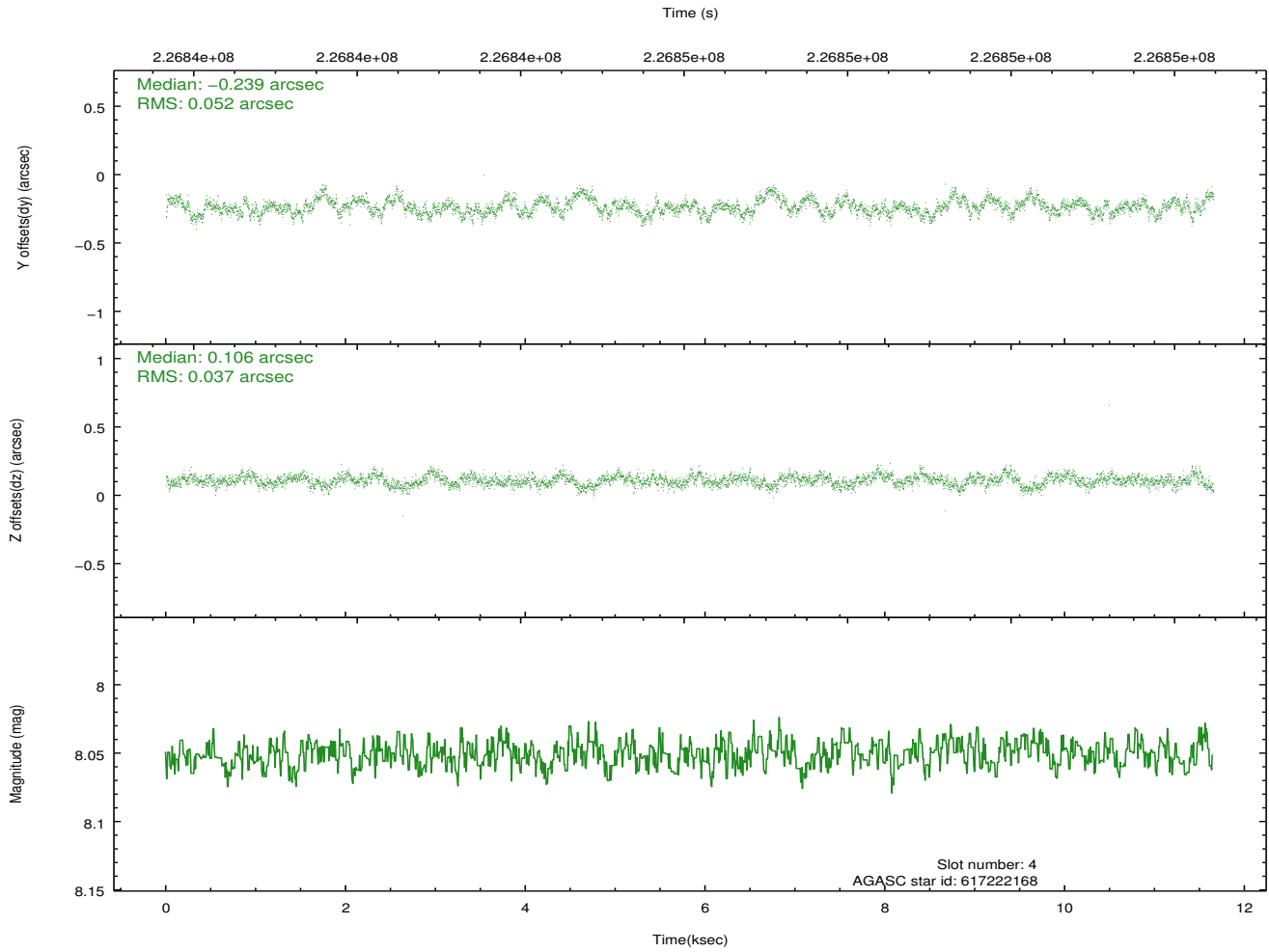
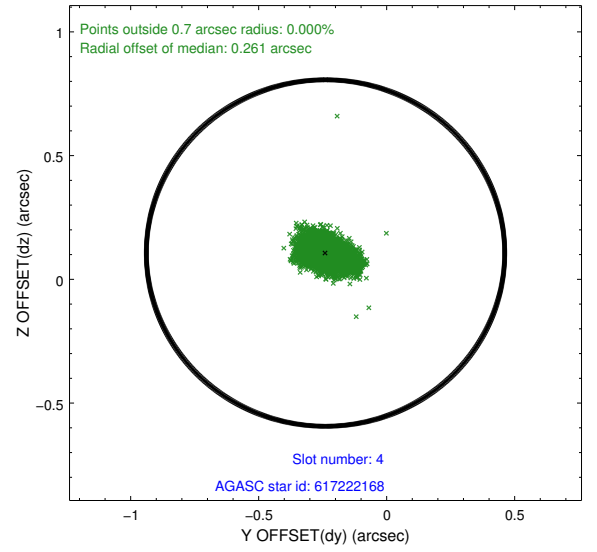
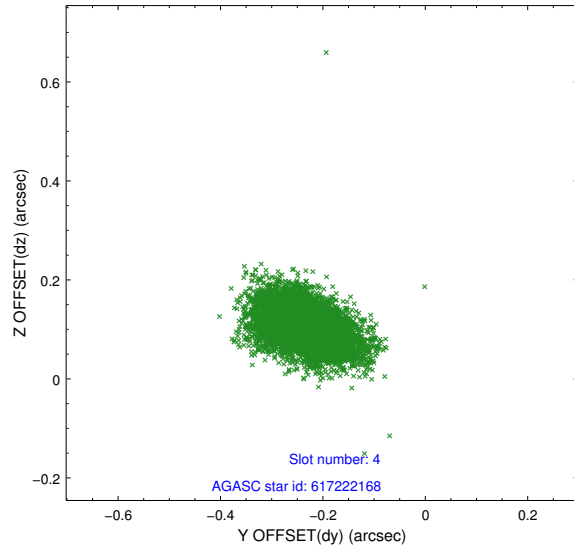
slot	status	id	mag	n_pts	med_dy	med_dz	dr1	dr2	ra	dec	mean_y	mean_z
0	FID	ACIS-S-1	7.19	2843	0.066	-0.088	0.006	0.011	0.000000	0.000000	936.07	-1728.97
1	FID	ACIS-S-5	7.24	2843	-0.062	0.050	0.006	0.010	0.000000	0.000000	-1812.78	168.33
2	FID	ACIS-S-6	7.34	2843	-0.025	0.050	0.007	0.012	0.000000	0.000000	401.12	812.74
3	GUIDE	617087184	9.55	5677	0.238	-0.042	0.121	0.197	49.633097	-1.617509	2252.86	-1282.14
4	GUIDE	617222168	8.05	5685	-0.239	0.106	0.066	0.113	50.285317	-0.369555	-2060.87	1380.10
5	GUIDE	617224968	8.76	5682	-0.138	0.098	0.071	0.118	50.296542	-0.525136	-1499.99	1380.88
6	GUIDE	617228200	9.35	5683	0.073	-0.113	0.087	0.143	50.041217	-1.538419	2073.22	203.42
7	GUIDE	617228520	9.86	5685	0.065	-0.051	0.137	0.249	50.021333	-1.556610	2134.18	127.16

## 2.4 Star Slots

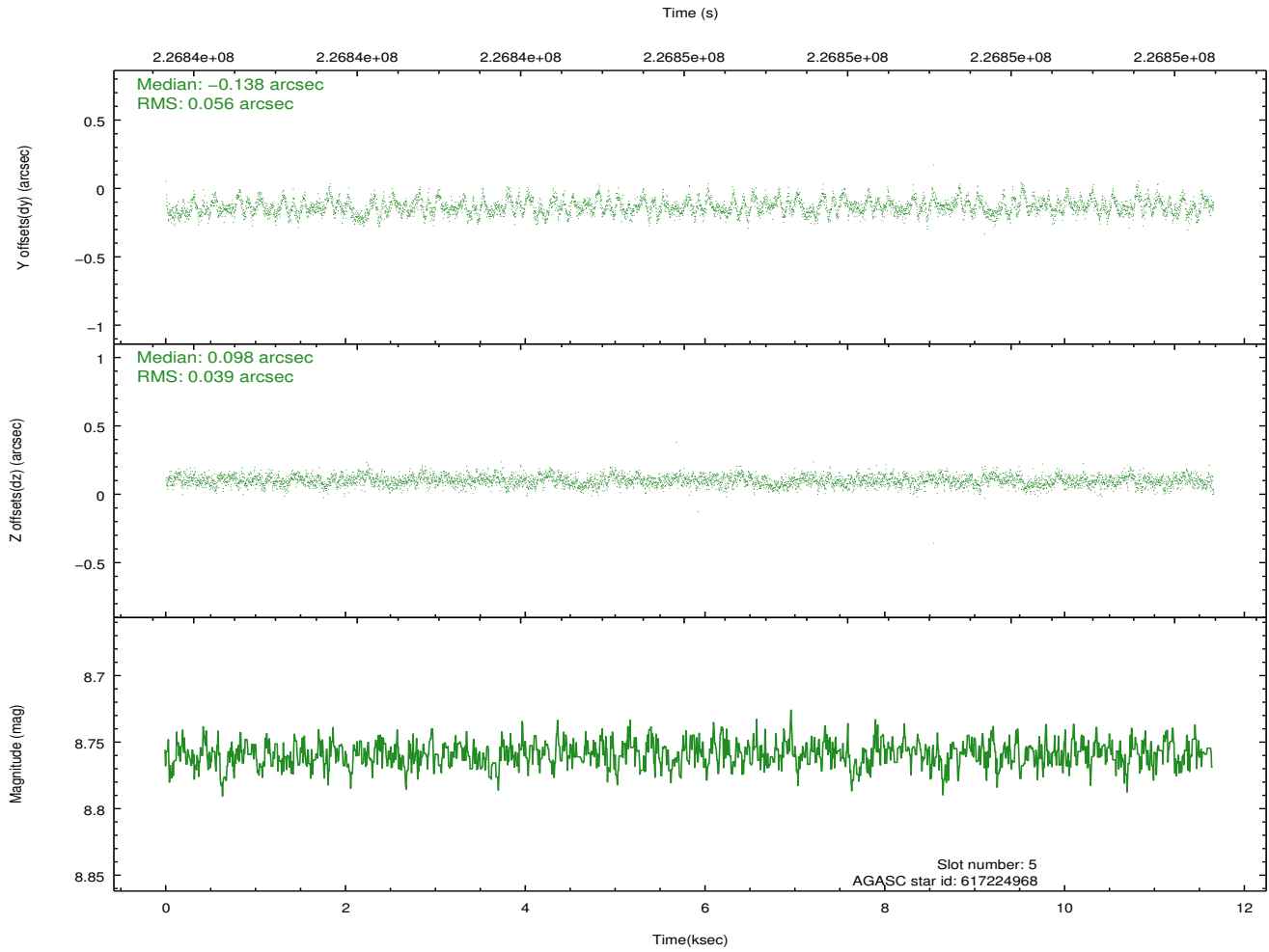
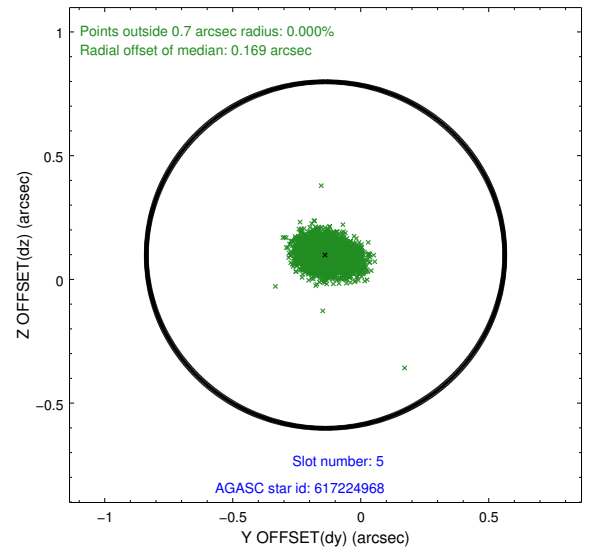
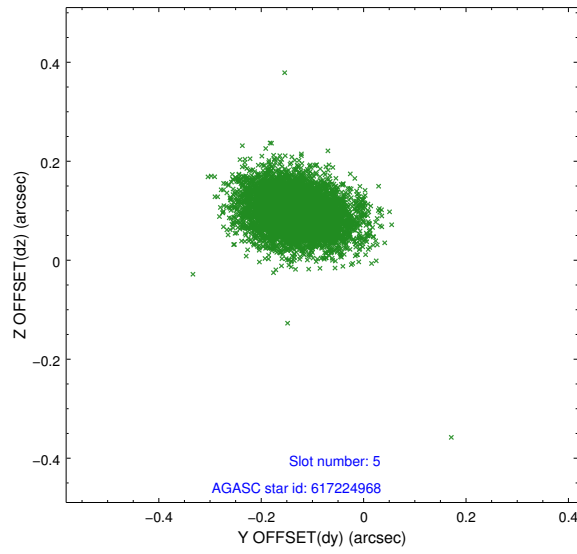
### 2.4.1 Slot 3



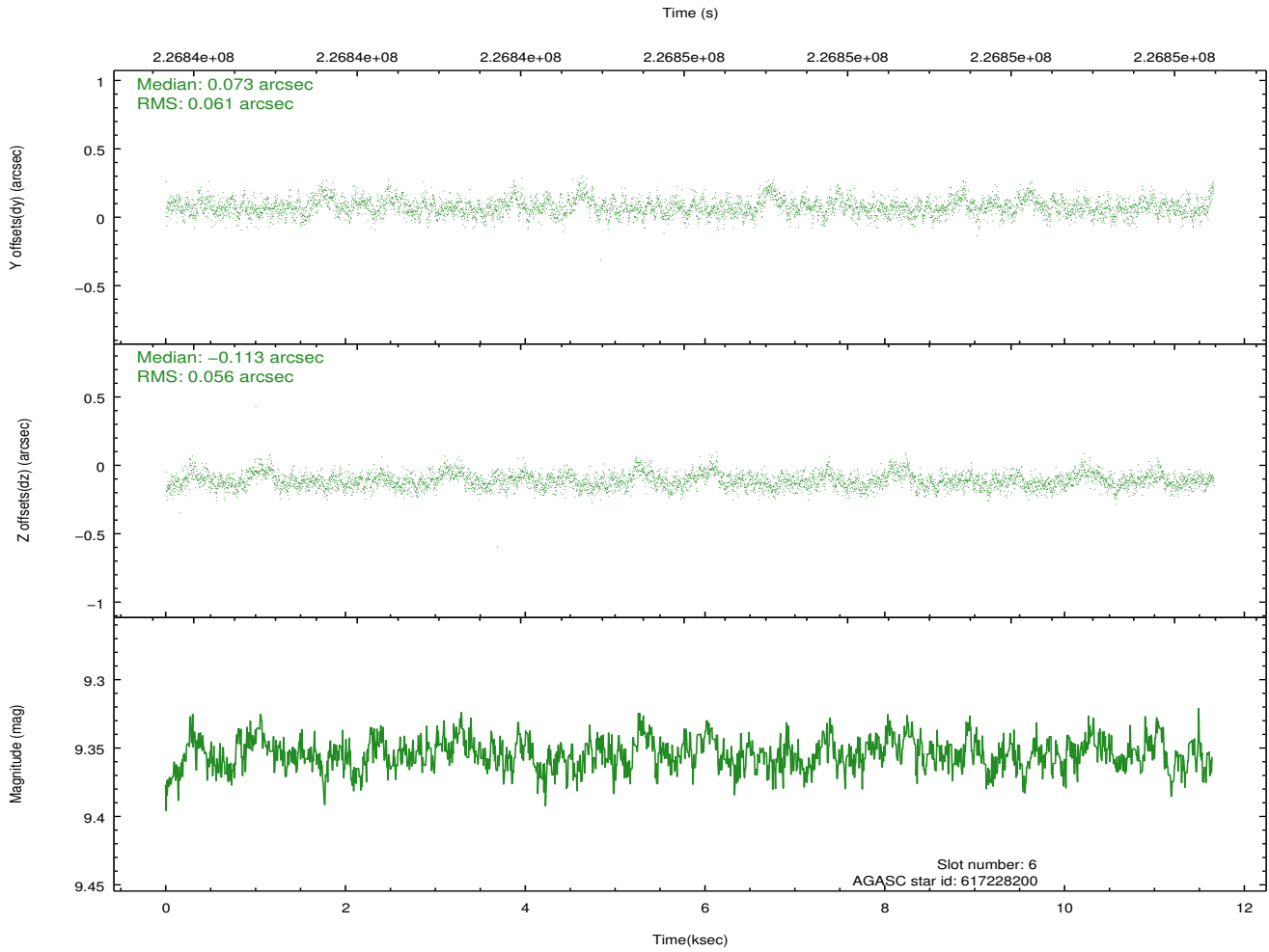
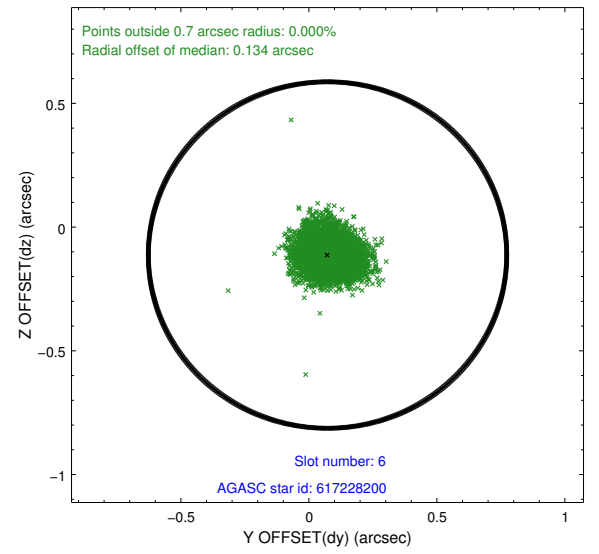
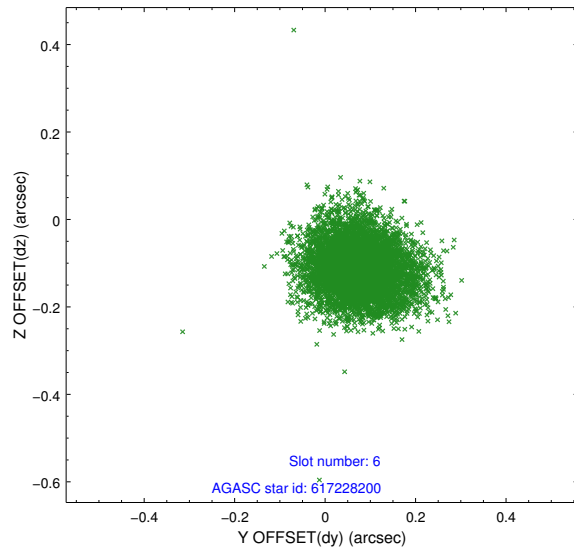
## 2.4.2 Slot 4



### 2.4.3 Slot 5

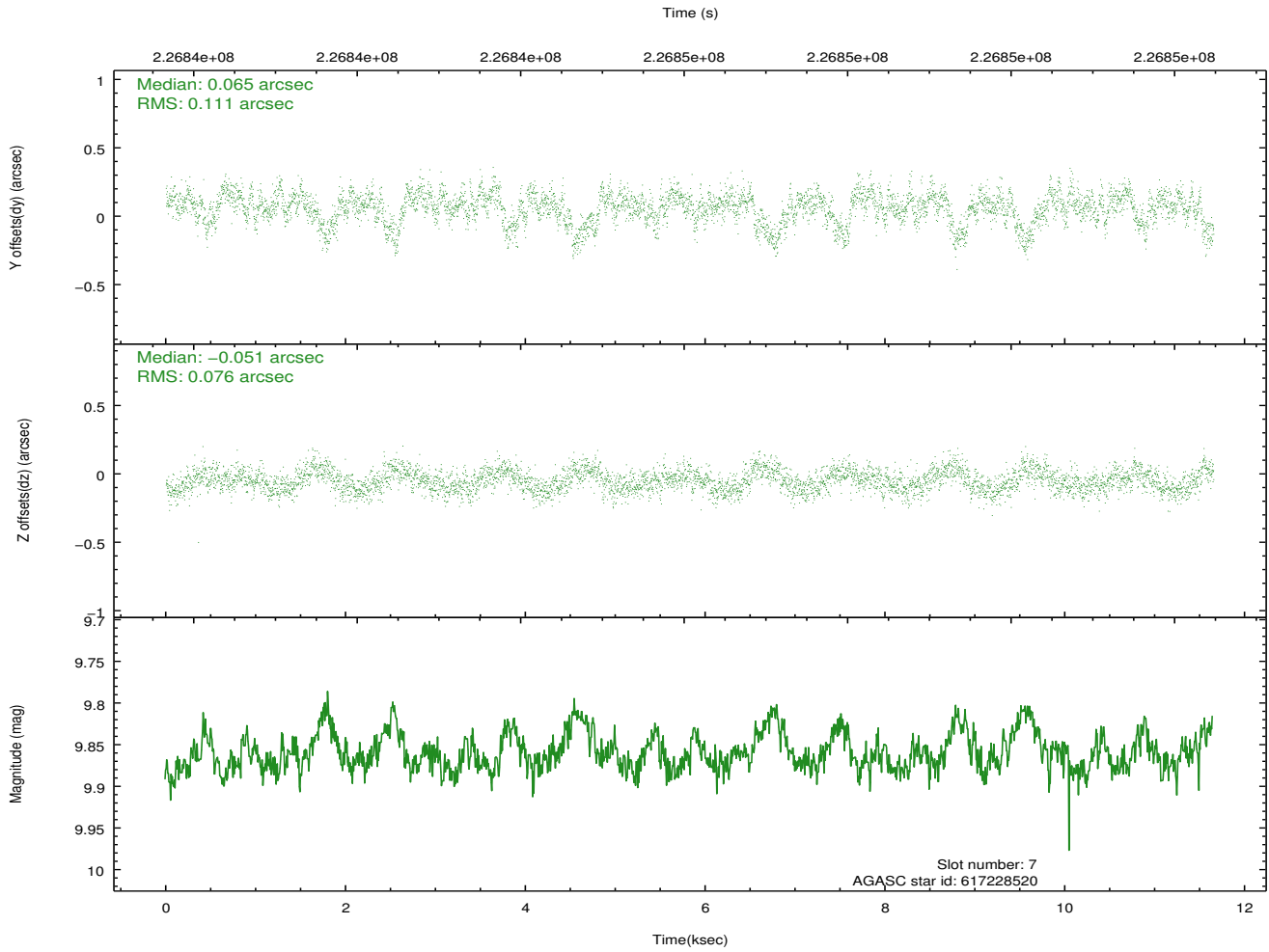
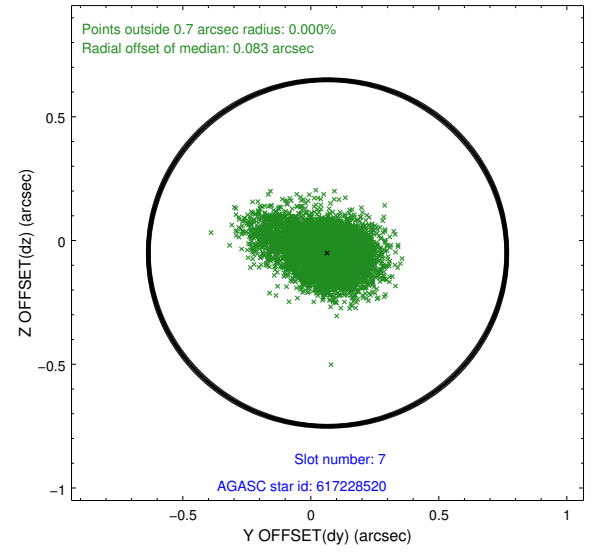
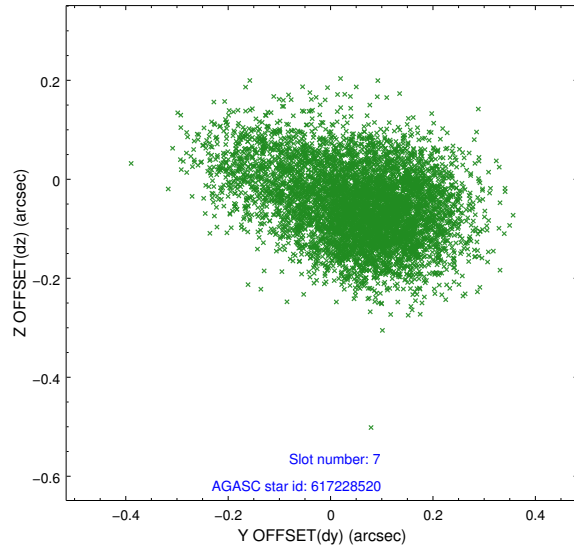


## 2.4.4 Slot 6



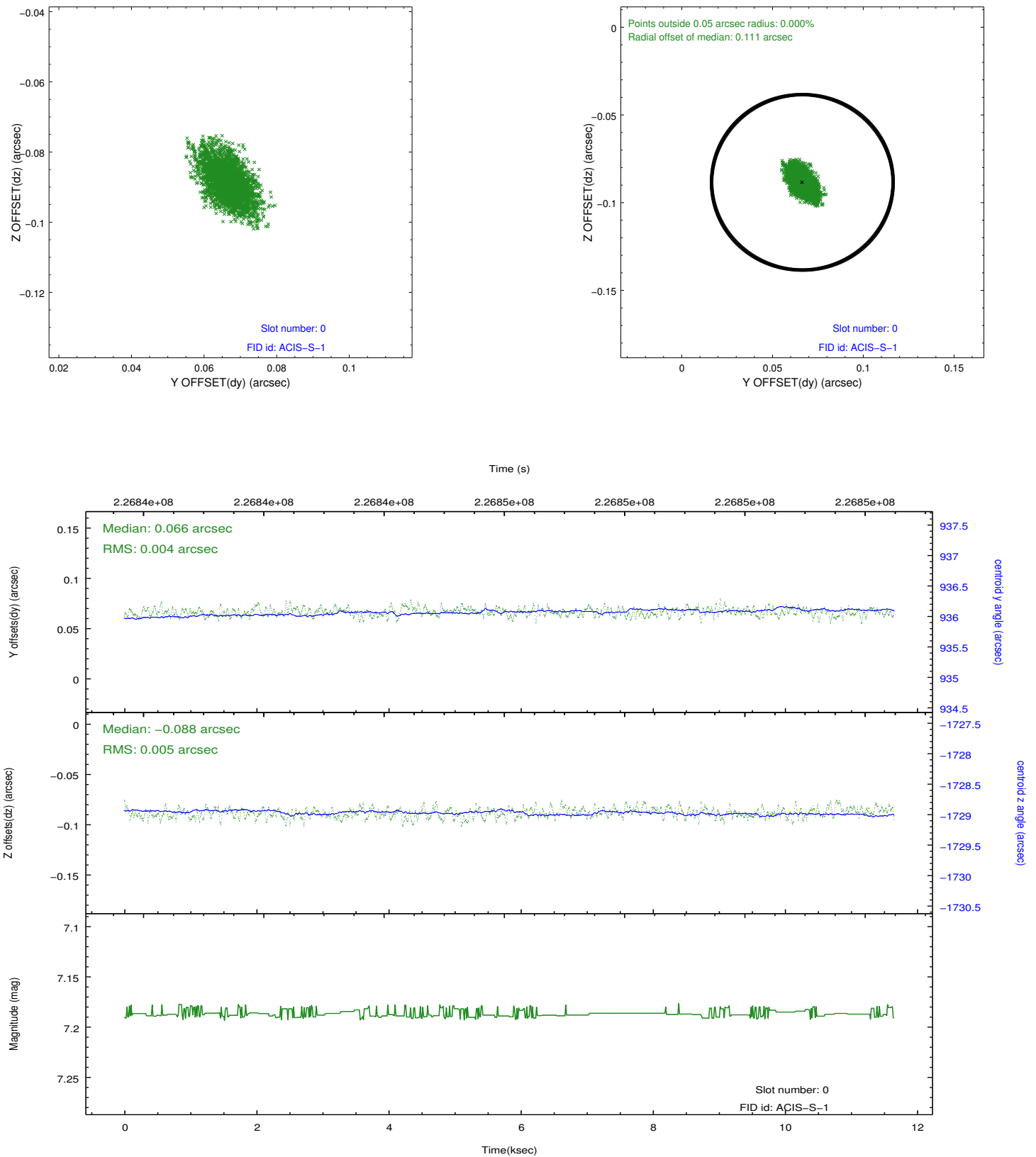


## 2.4.5 Slot 7

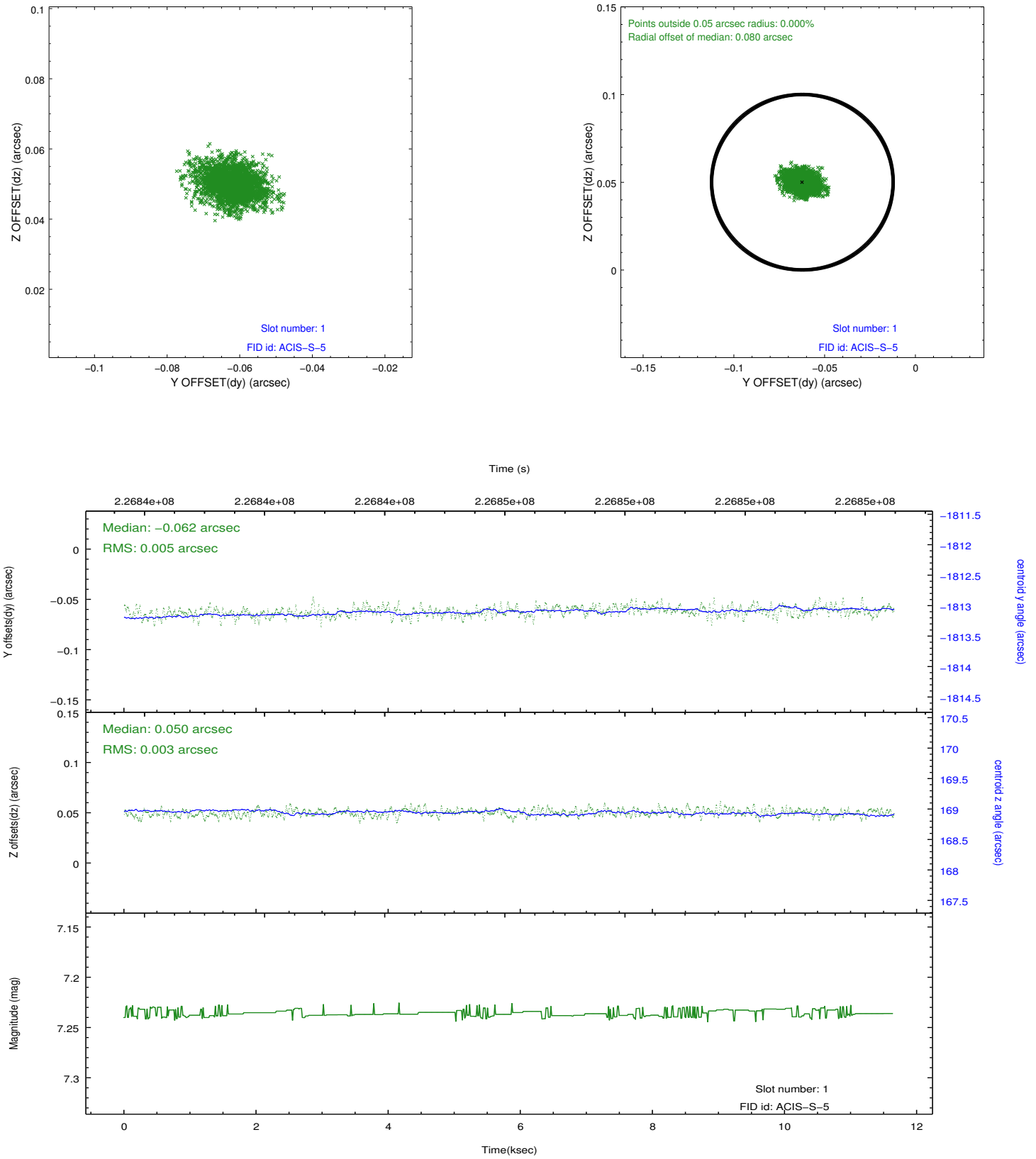


## 2.5 FID Slots

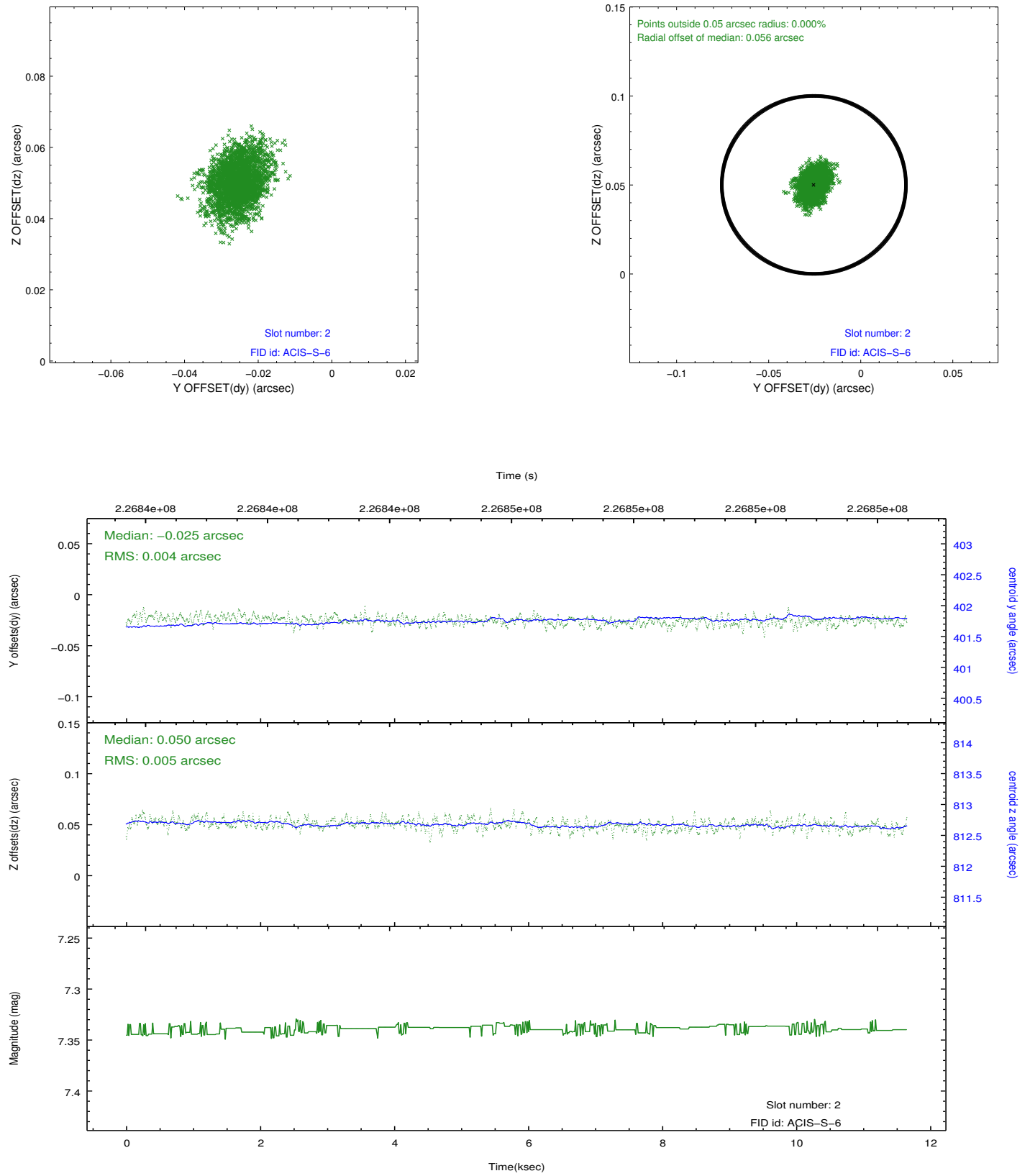
### 2.5.1 Slot 0



## 2.5.2 Slot 1



### 2.5.3 Slot 2



## A Summary

### A.1 Status

V&V Scientist	Beth Sundheim
V&V Date (YYYY-MM-DD)	2013.01.11
V&V Edition	1
V&V Disposition and Status	OK
V&V Charge Time	11.63839

### A.2 Comments