

# V&V Reference Report

## L2 ASCDS Version : 8.5.1.1

Observation 5693 - L2 Version 3  
Chandra X-Ray Center

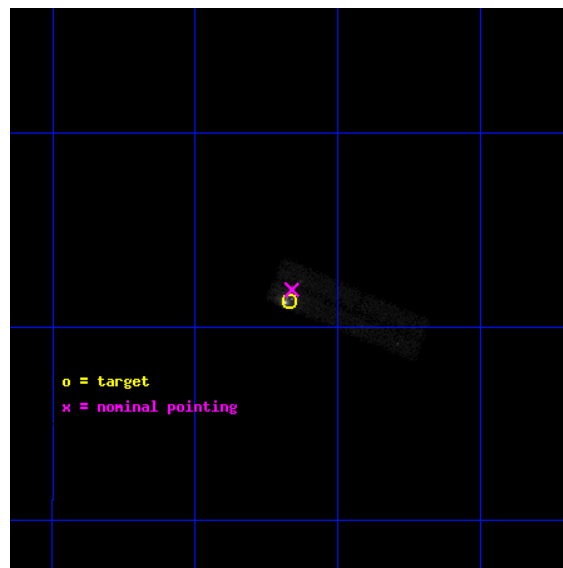
L2 Processing Date : Dec 26 2012

## Contents

<b>1</b>	<b>Front</b>	<b>2</b>
<b>2</b>	<b>OBI</b>	<b>3</b>
2.1	OBI . . . . .	3
2.1.1	Images . . . . .	3
2.1.2	Bias . . . . .	3
2.1.3	Parameters . . . . .	4
2.1.4	Events . . . . .	4
2.2	Compared Parameters . . . . .	5
2.3	Aspect . . . . .	6
2.4	Star Slots . . . . .	9
2.4.1	Slot 3 . . . . .	9
2.4.2	Slot 4 . . . . .	10
2.4.3	Slot 5 . . . . .	11
2.4.4	Slot 6 . . . . .	12
2.4.5	Slot 7 . . . . .	13
2.5	FID Slots . . . . .	14
2.5.1	Slot 0 . . . . .	14
2.5.2	Slot 1 . . . . .	15
2.5.3	Slot 2 . . . . .	16
<b>A</b>	<b>Summary</b>	<b>17</b>
A.1	Status . . . . .	17
A.2	Comments . . . . .	17

# 1 Front

seq_num	701115	Sequence number
obs_id	5693	Observation id
title	THE ENIGMATIC X-RAY JET OF 3C120	Proposal title
observer	Dr. Daniel Harris	Principal investigator
object	3C120	Source name
dtcycle	0	&#160
cycle	P	events from which exps? Prim/Second/Both
ra_targ	68.2925	Observer's specified target RA [deg]
dec_targ	5.355556	Observer's specified target Dec [deg]
ra_nom	68.290369137634	Nominal RA [deg]
dec_nom	5.3652868475818	Nominal Dec [deg]
roll_nom	112.89301210419	Nominal Roll [deg]
revision	3	Processing version of data
ontime	57132.0	Sum of GTIs [s]
livetime	52798.314357534	Livetime [s]
ontime2	57130.917939931	Sum of GTIs [s]
ontime3	57132.0	Sum of GTIs [s]
l2events	120176	Number of level 2 events

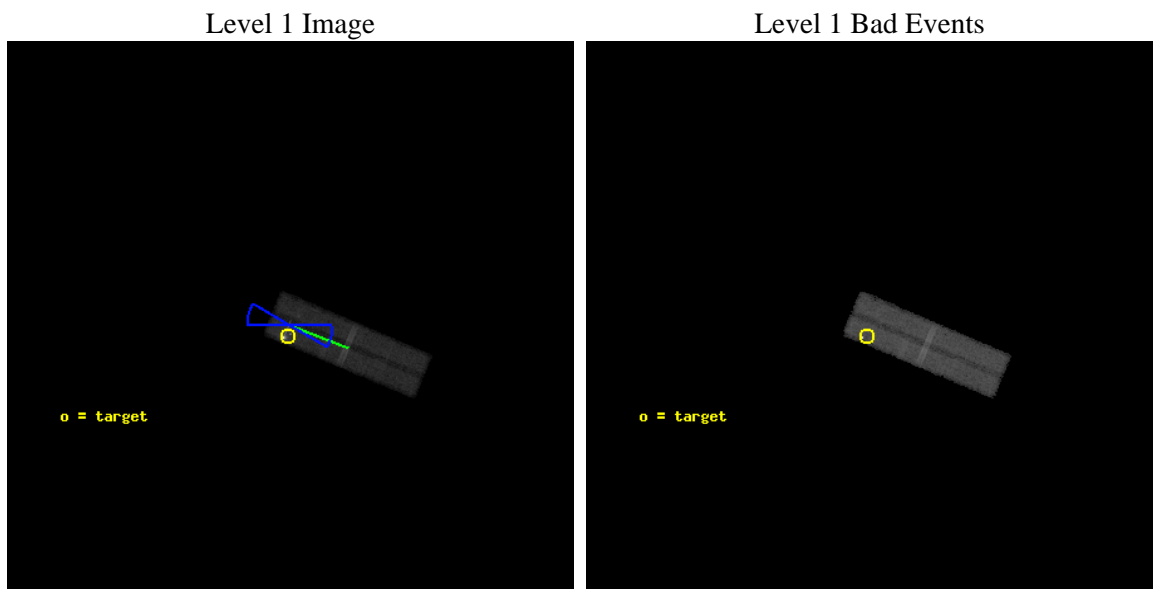




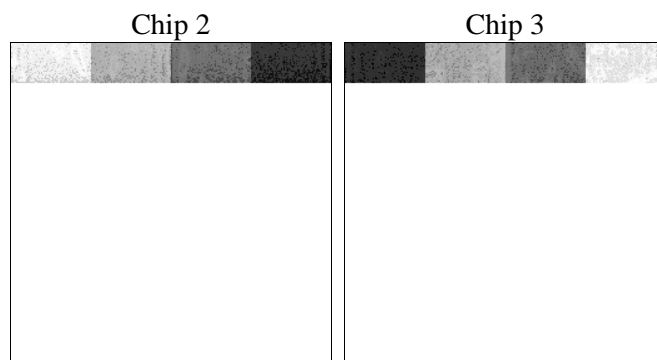
## 2 OBI

### 2.1 OBI

#### 2.1.1 Images



#### 2.1.2 Bias



### 2.1.3 Parameters

obi_num	0	Obi number	sched_exp_time	57000.000000	[s] Scheduled observation exposure time
ascdsver	8.5.1.1	Processing system revision	ontime	57132.0	Sum of GTIs [s]
caldsver	4.5.5	&#160	ontime2	57130.917939931	Sum of GTIs [s]
date	2012-12-26T14:32:02	Date and time of file creation	ontime3	57132.0	Sum of GTIs [s]
revision	3	Processing version of data	l1events	305174	Number of level 1 events

### 2.1.4 Events

	ccd 2	ccd 3
level 1 events	77655	227519
rejected events	67635	113267
rejected %	87%	49%

	ccd 2	ccd 3
grade 0 events	4277	58028
	5%	25%
grade 1 events	42	13797
	0%	6%
grade 2 events	1416	20636
	1%	9%
grade 3 events	1557	9675
	2%	4%
grade 4 events	1608	9353
	2%	4%
grade 5 events	2242	19570
	2%	8%
grade 6 events	1317	16881
	1%	7%
grade 7 events	65196	79579
	83%	34%

## 2.2 Compared Parameters

Parameter	Planned	Actual	Parameter	Planned	Actual
Instrument	ACIS	ACIS	Obspar format version number	7	7
Detector	ACIS-23	ACIS-23	Obspar file type	PREDICTED	ACTUAL
Grating	NONE	NONE	Obspar update status	NONE	UPDATED
Data mode	FAINT	FAINT	Number of optional ACIS chips dropped	0	0
Observation mode	POINTING	POINTING	On-chip summing requested	N	N
[deg] Pointing RA	68.312375	68.29036913763437	Subarray requested	CUSTOM	1/8
[deg] Pointing Dec	5.348836	5.365286847581832	Subarray start row	897	897
[deg] Pointing Roll	112.682275	112.8930121041925	Subarray row count	128	128
[deg] Roll angle	105.000000	105.000000	Alternating exposures requested	N	N
[deg] Roll tolerance	15.000000	15.000000	[s] Primary exposure time	0.000000	0.5
Roll constraint allows 180D rotation	Y	Y			
[mm] SIM focus pos	-0.782348	-0.7809083437167272			
[mm] SIM defocus	0	0.001439871863259334			
[mm] SIM translation stage pos	-232.132463	-232.1391888471301			
[mm] SIM translation stage offset	-1.46	-1.453264155799559			
[s] Observation start time (MET)	238112263.184000	238111116.30528			
Observation start date	2005-07-18T22:16:39	2005-07-18T21:58:36			
[s] Observation end time (MET)	238169263.184000	238170363.358			
Observation end date	2005-07-19T14:06:39	2005-07-19T14:26:03			
Read mode	TIMED	TIMED			

## 2.3 Aspect

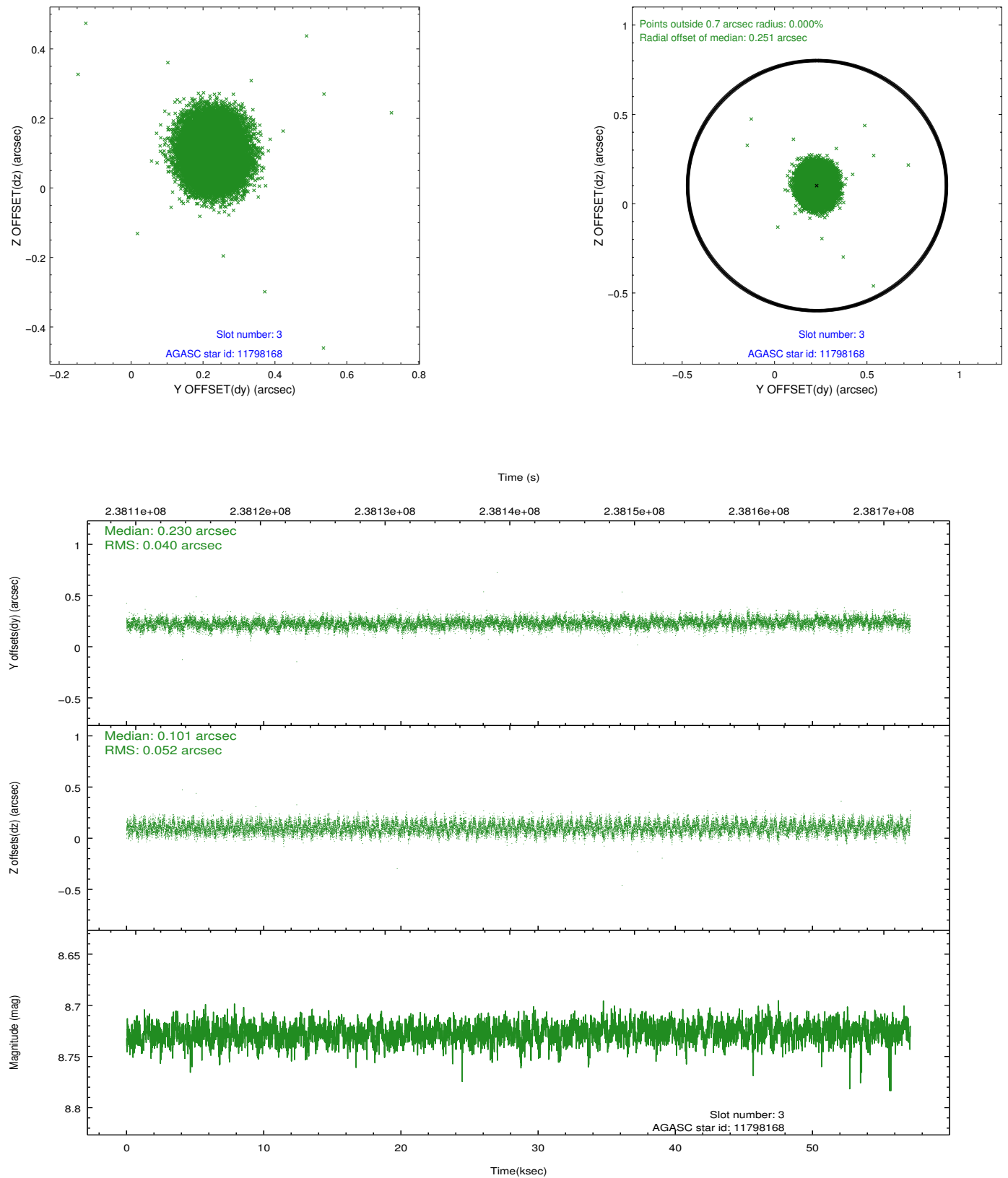


### Slot Statistics

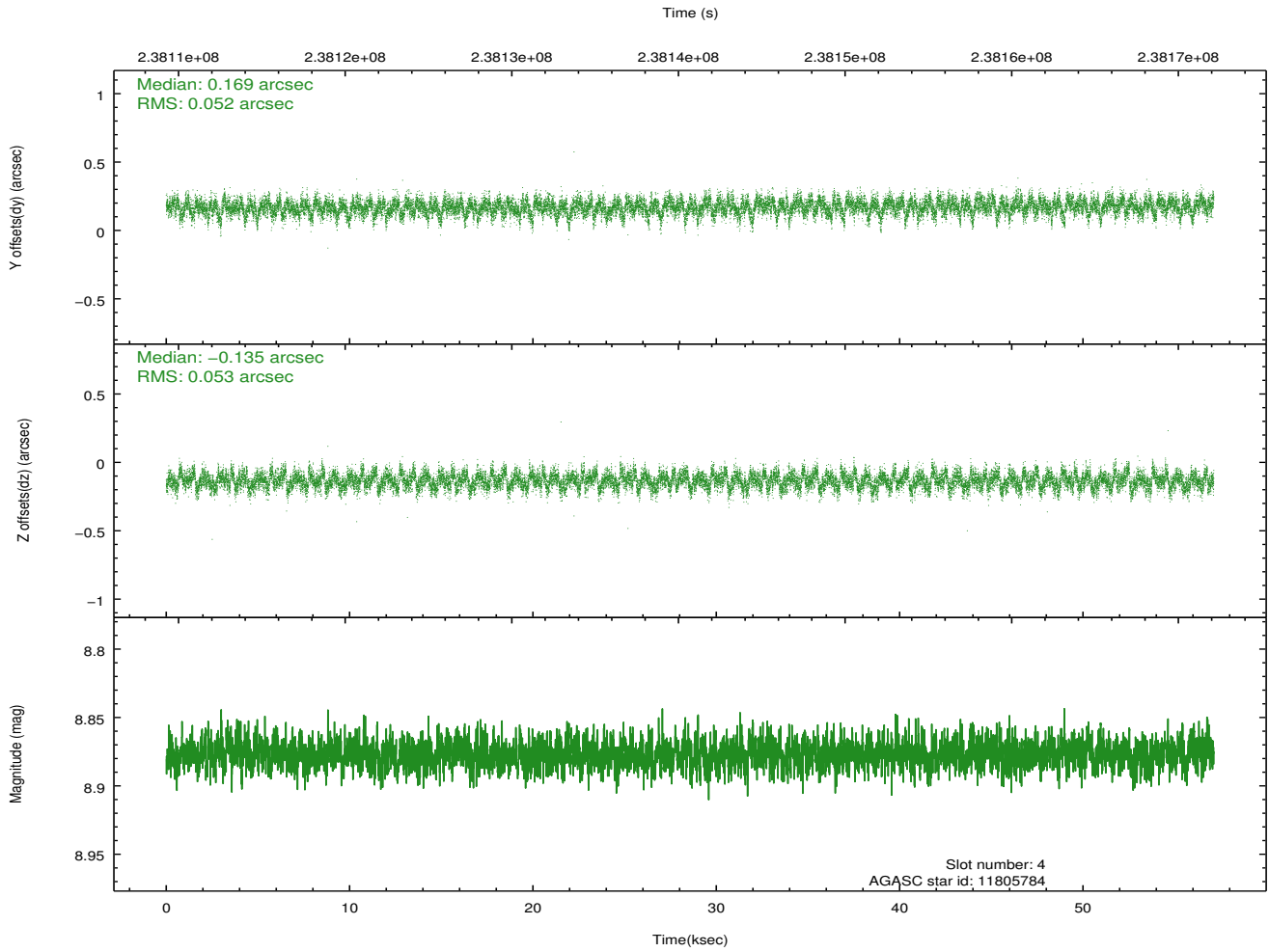
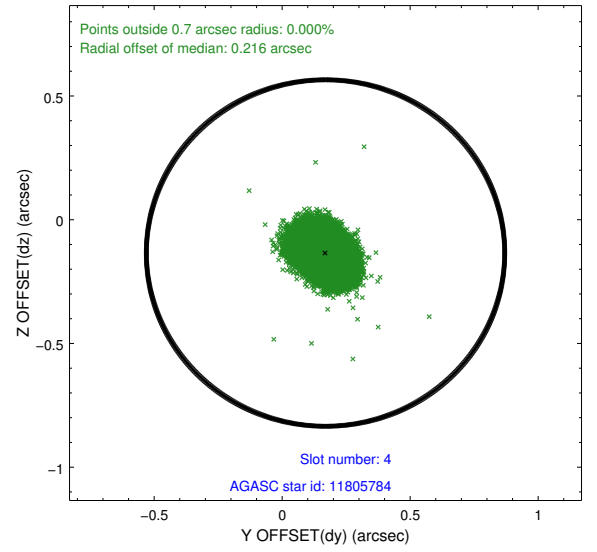
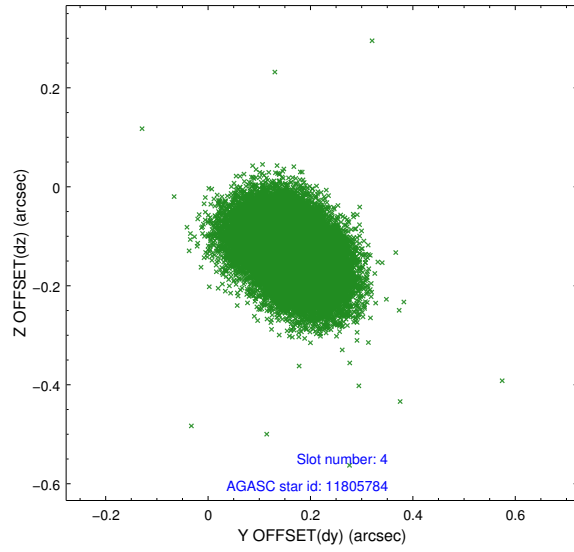
slot	status	id	mag	n_pts	med_dy	med_dz	dr1	dr2	ra	dec	mean_y	mean_z
0	FID	ACIS-I-1	7.24	13935	0.059	-0.010	0.011	0.029	0.000000	0.000000	933.10	-864.91
1	FID	ACIS-I-5	7.23	13935	-0.176	0.077	0.011	0.031	0.000000	0.000000	-1815.21	1032.75
2	FID	ACIS-I-6	7.25	13933	0.025	0.004	0.015	0.039	0.000000	0.000000	398.72	1677.09
3	GUIDE	11798168	8.73	27861	0.230	0.101	0.071	0.111	68.723067	4.993277	-1748.22	-865.49
4	GUIDE	11805784	8.88	27855	0.169	-0.135	0.078	0.128	68.291152	4.970127	-1228.78	595.77
5	GUIDE	12323392	8.90	27860	0.025	-0.098	0.070	0.114	68.029576	5.625661	1310.34	550.53
6	GUIDE	12324304	8.91	27861	-0.106	0.215	0.069	0.112	68.756585	5.787053	842.88	-2076.07
7	GUIDE	12327088	8.62	27863	-0.315	-0.086	0.066	0.107	67.823561	5.844308	2321.34	927.32

## 2.4 Star Slots

### 2.4.1 Slot 3

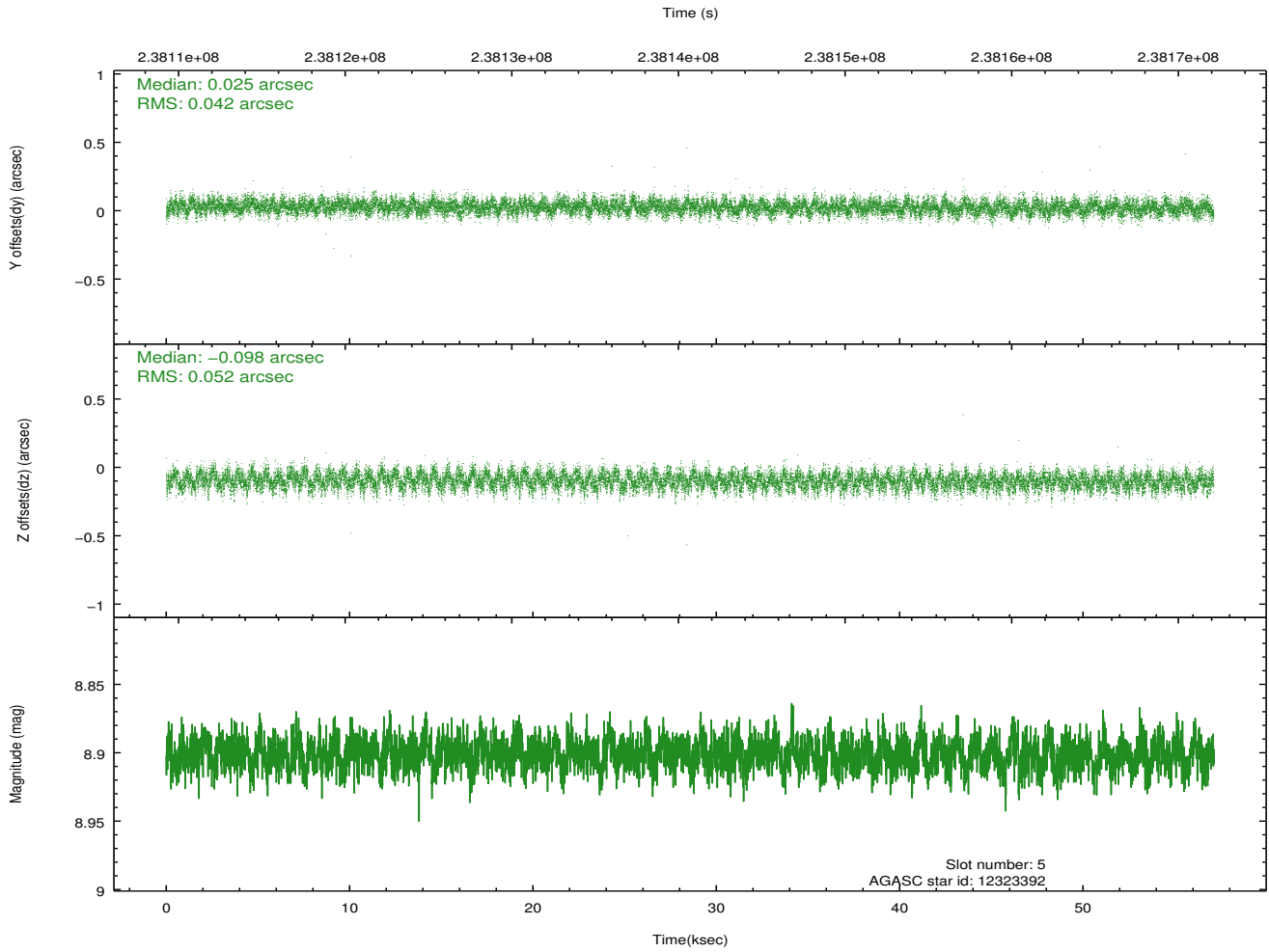
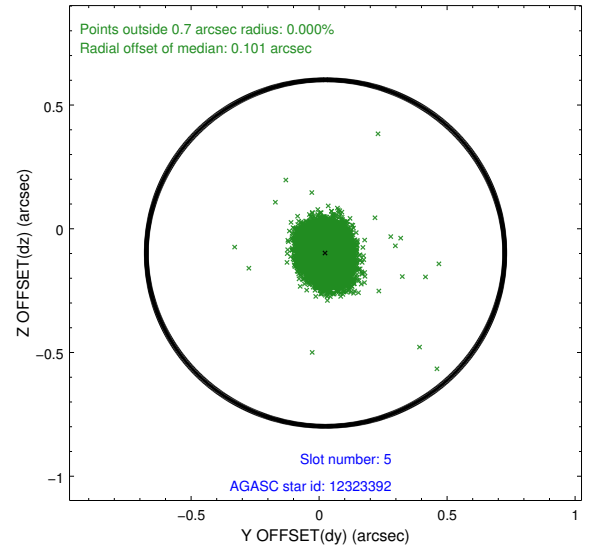
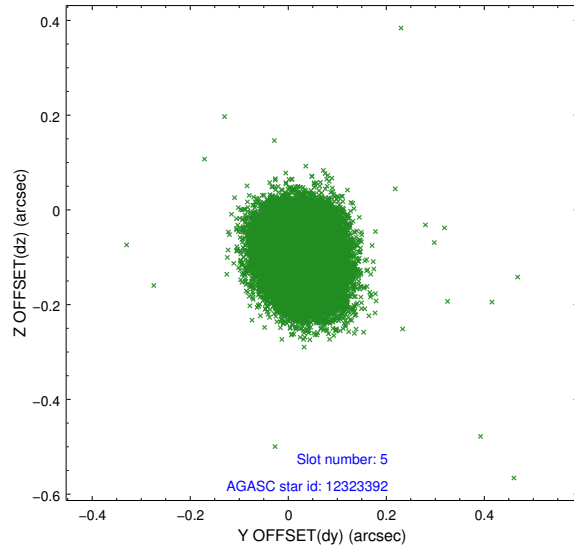


## 2.4.2 Slot 4

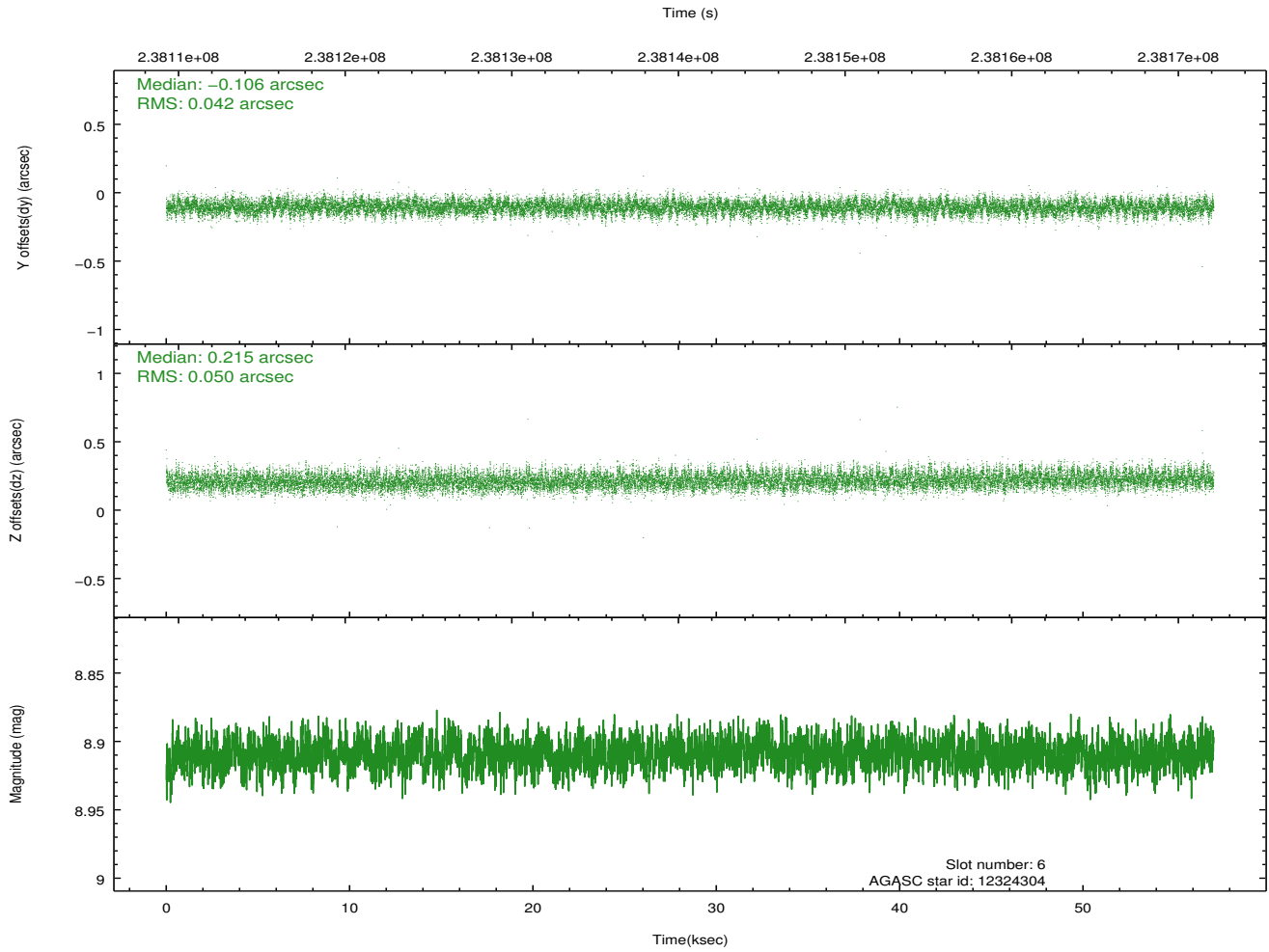
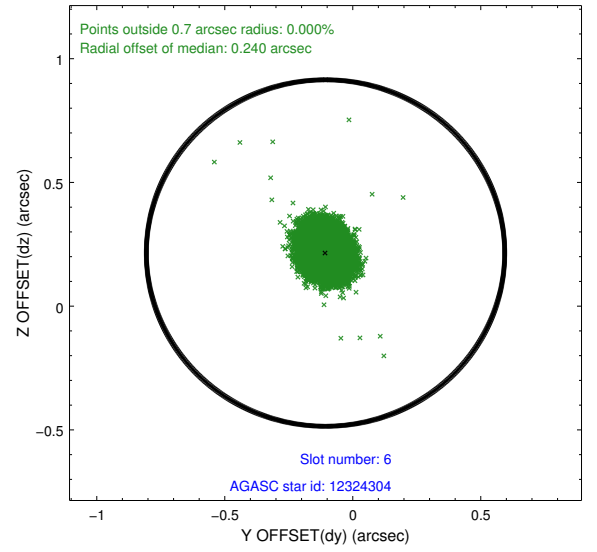
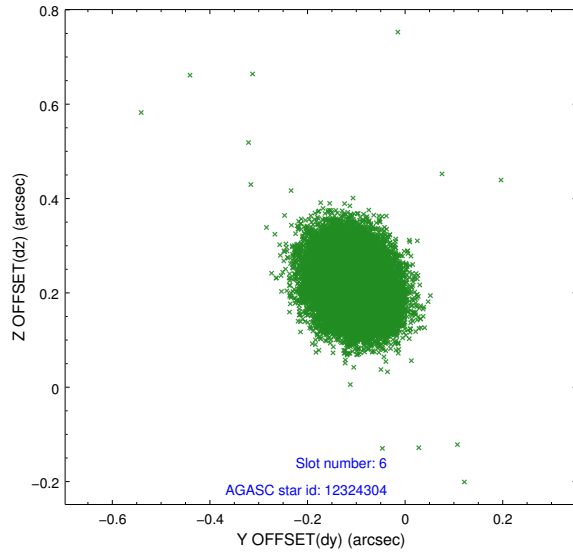




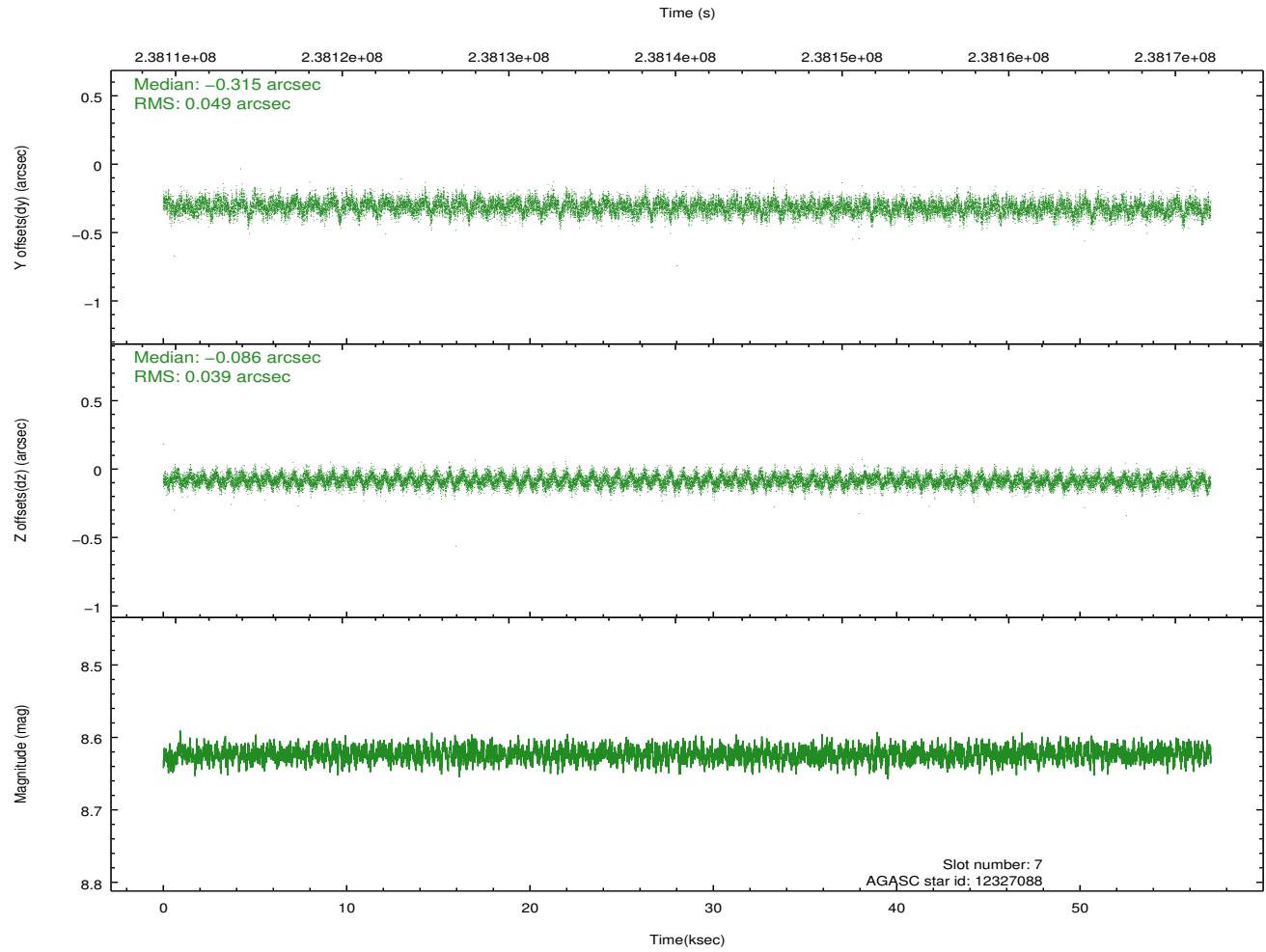
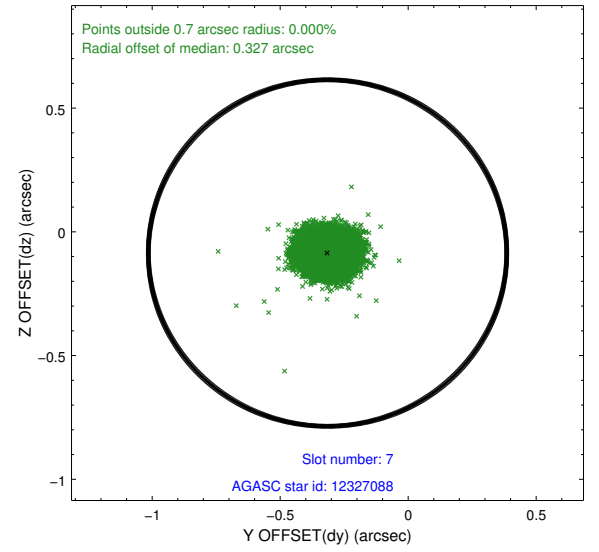
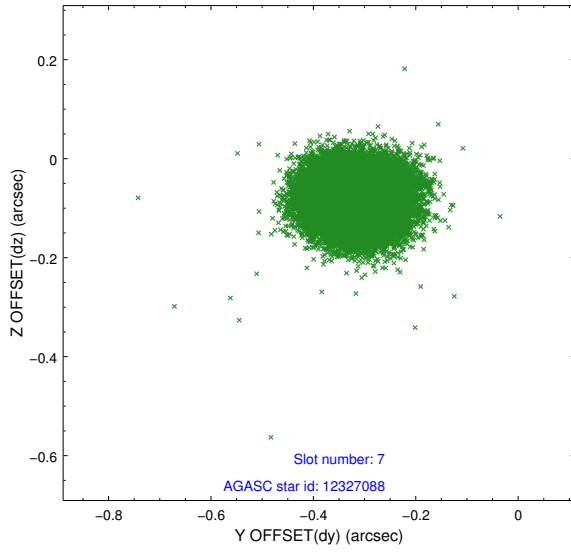
### 2.4.3 Slot 5



## 2.4.4 Slot 6

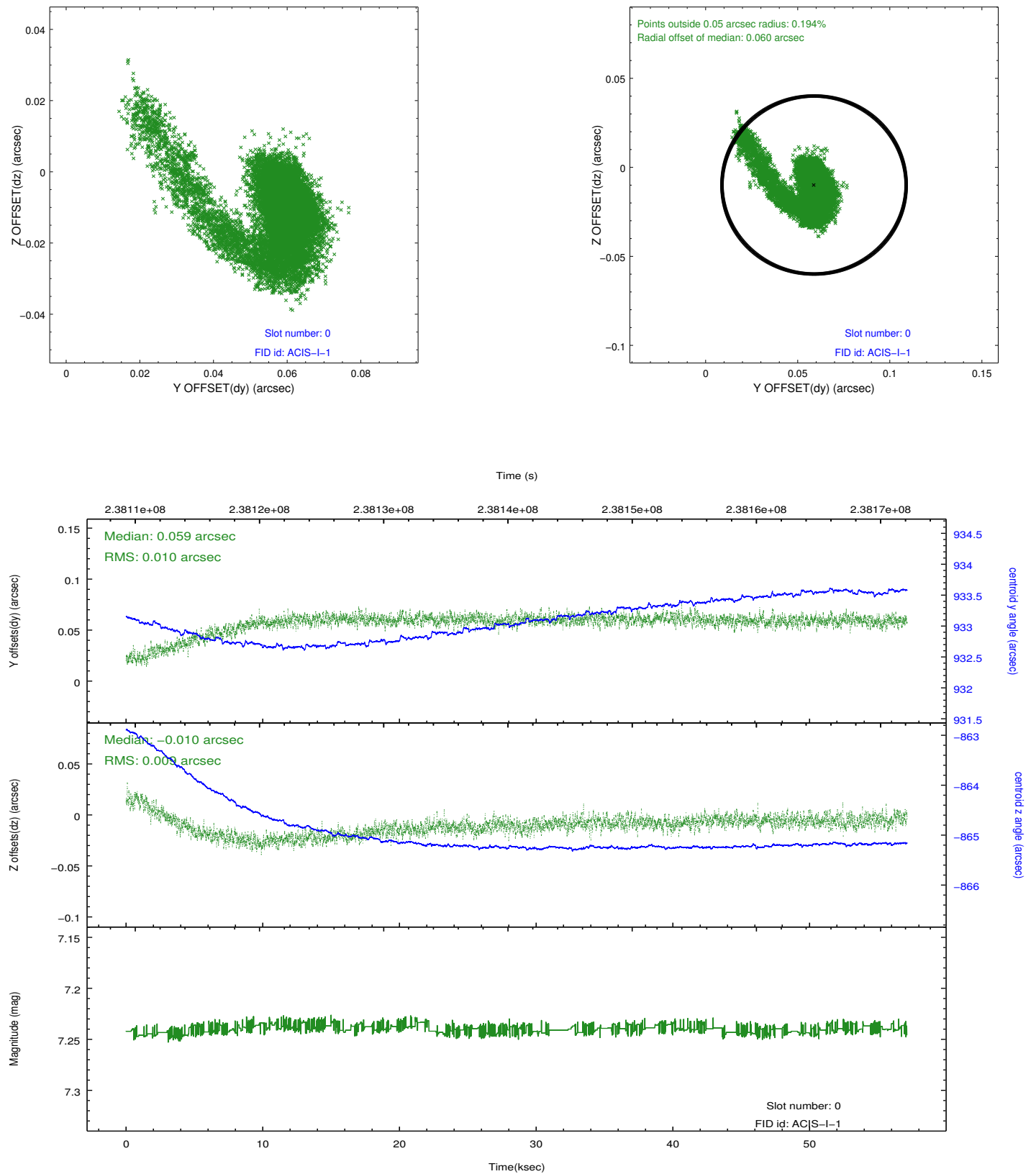


## 2.4.5 Slot 7

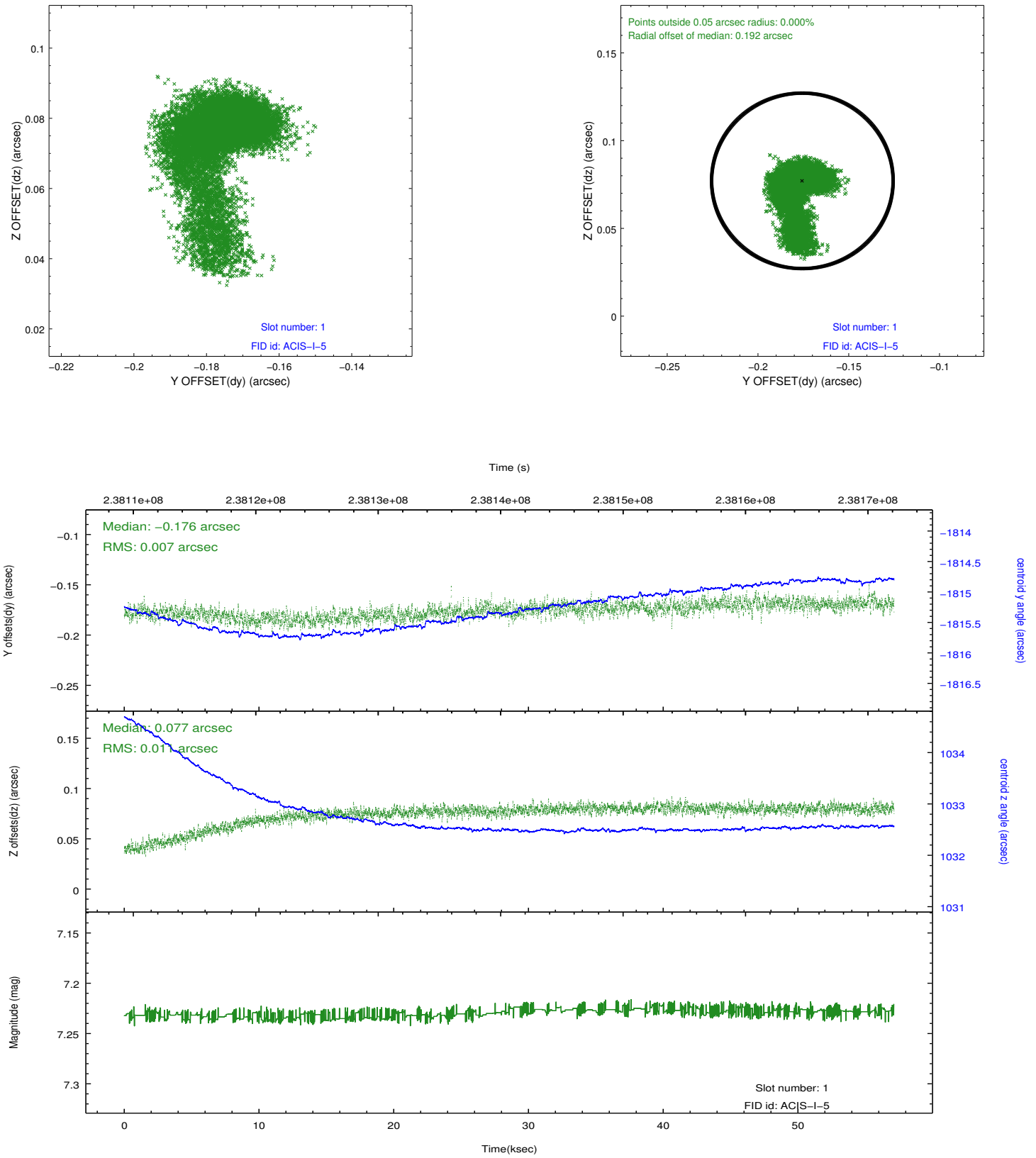


## 2.5 FID Slots

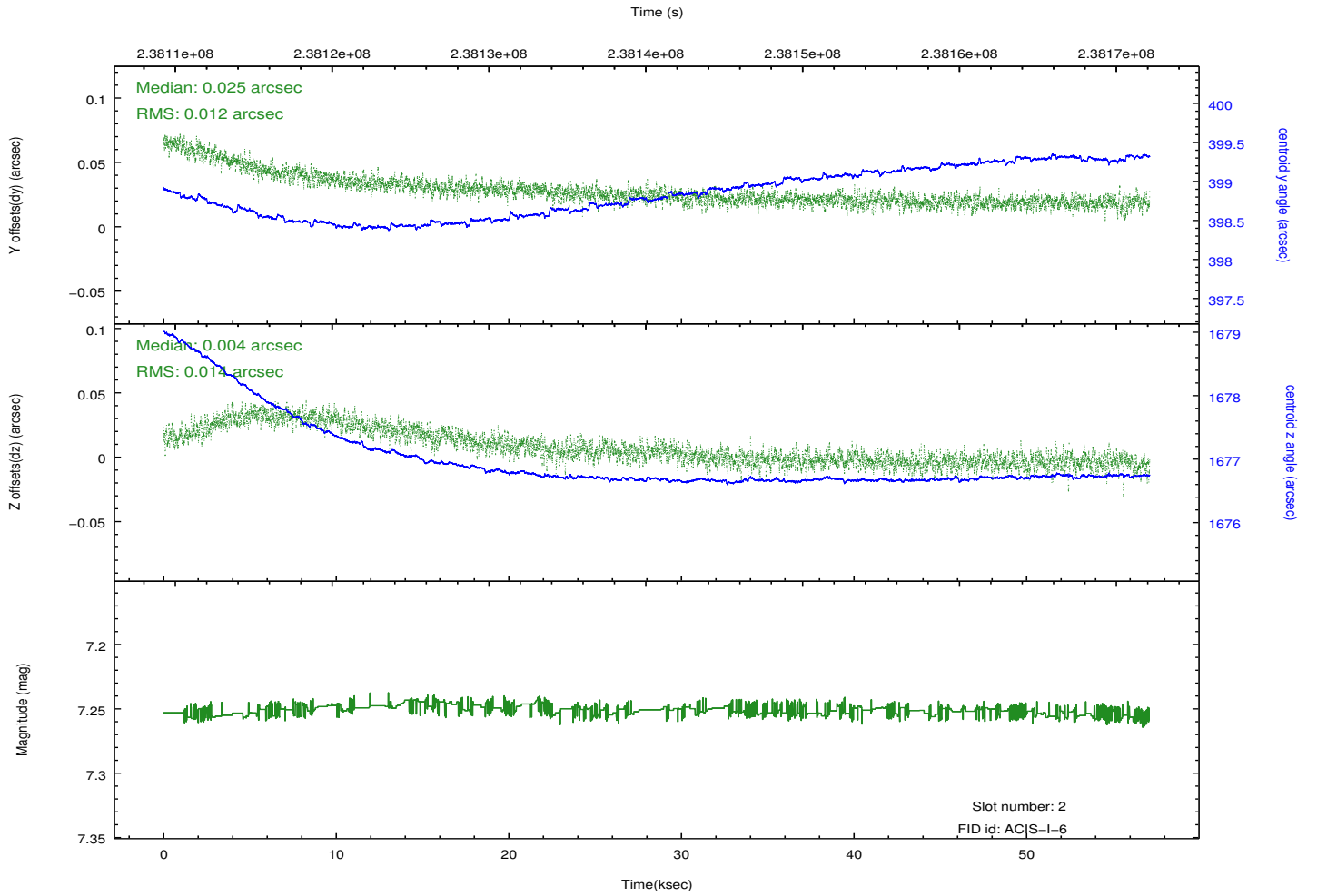
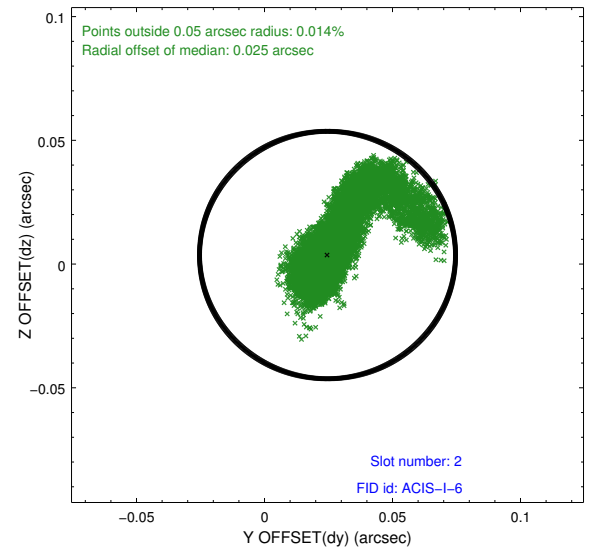
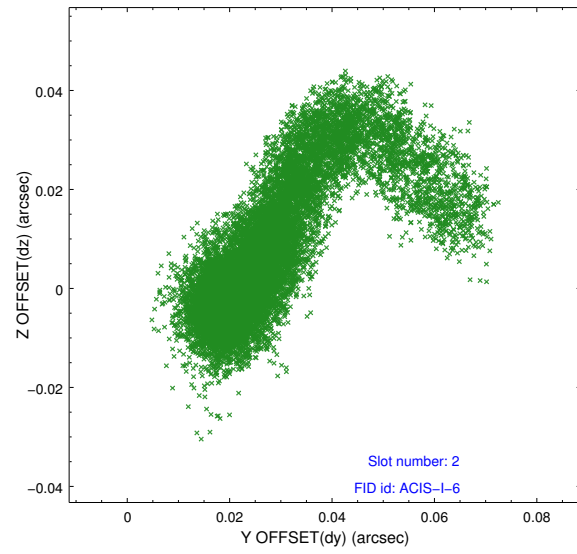
### 2.5.1 Slot 0



## 2.5.2 Slot 1



### 2.5.3 Slot 2



## A Summary

### A.1 Status

V&V Scientist	Jen Lauer
V&V Date (YYYY-MM-DD)	2013.01.23
V&V Edition	1
V&V Disposition and Status	OK
V&V Charge Time	57.132

### A.2 Comments

Roll constraint satisfied.