

# V&V Reference Report

## L2 ASCDS Version : 7.6.7

Observation 5689 - L2 Version 002  
Chandra X-Ray Center

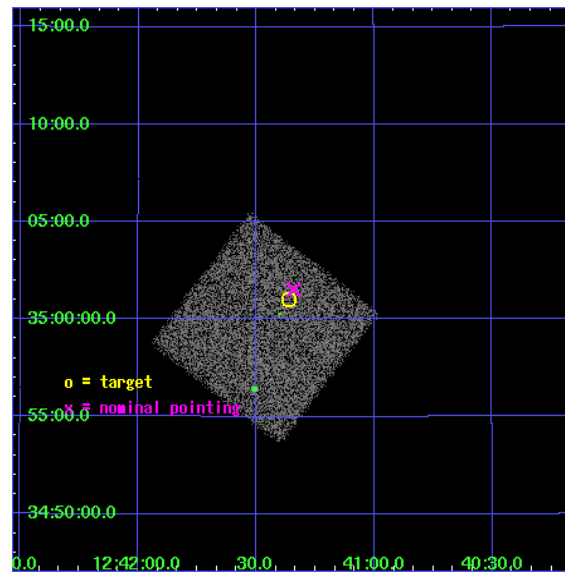
L2 Processing Date: Feb 25 2006

## Contents

<b>1</b>	<b>Front</b>	<b>2</b>
<b>2</b>	<b>OBI</b>	<b>3</b>
2.1	OBI . . . . .	3
2.1.1	Images . . . . .	3
2.1.2	Bias . . . . .	3
2.1.3	Parameters . . . . .	4
2.1.4	Events . . . . .	4
2.2	Compared Parameters . . . . .	5
2.3	Aspect . . . . .	6
2.4	Star Slots . . . . .	9
2.4.1	Slot 3 . . . . .	9
2.4.2	Slot 4 . . . . .	10
2.4.3	Slot 5 . . . . .	11
2.4.4	Slot 6 . . . . .	12
2.4.5	Slot 7 . . . . .	13
2.5	FID Slots . . . . .	14
2.5.1	Slot 0 . . . . .	14
2.5.2	Slot 1 . . . . .	15
2.5.3	Slot 2 . . . . .	16
<b>3</b>	<b>Point Sources</b>	<b>17</b>
<b>A</b>	<b>Summary</b>	<b>18</b>
A.1	Status . . . . .	18
A.2	Comments . . . . .	18

# 1 Front

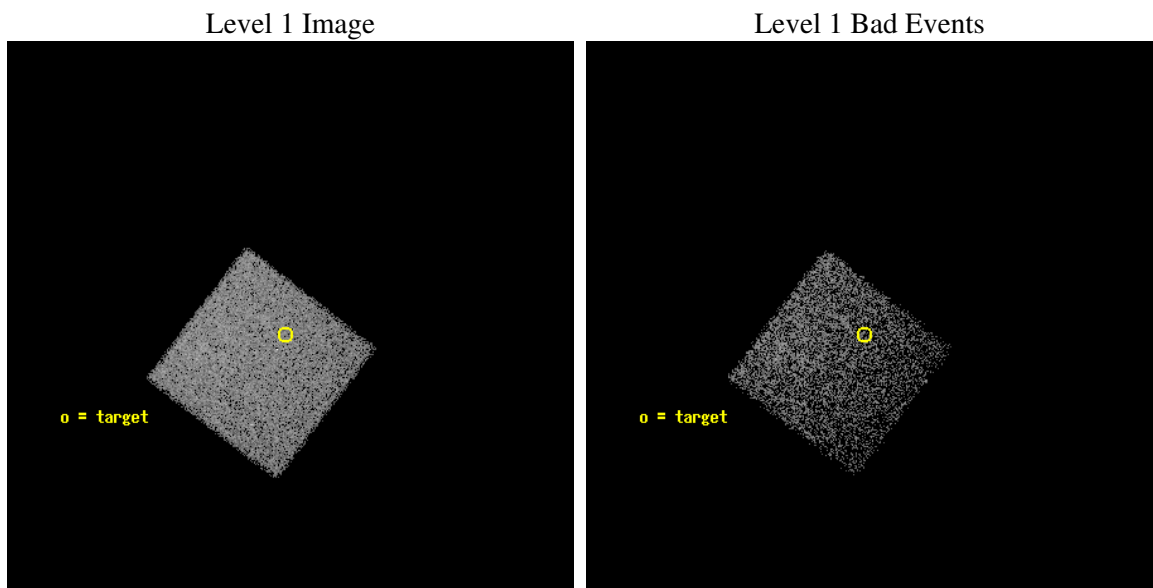
seq_num	701112
obs_id	5689
title	Bringing in the Last SHEEP
observer	Dr Kirpal Nandra
object	AX J1241.3+3501
dtcycle	0
cycle	P
ra_targ	190.340417
dec_targ	35.016944
ra_nom	190.33510475402
dec_nom	35.025459347272
roll_nom	127.47123605844
revision	2
ontime	5081.5999810696
livetime	5017.2537023371
ontime7	5081.5999810696
l2events	18760



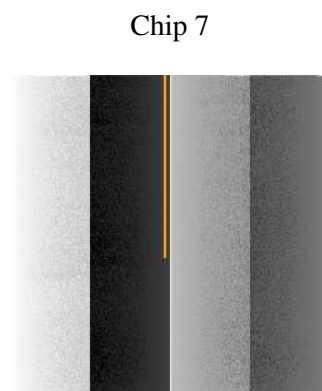
## 2 OBI

### 2.1 OBI

#### 2.1.1 Images



#### 2.1.2 Bias



### 2.1.3 Parameters

obi_num	0
ascdsver	7.6.7
caldbver	3.2.1
date	2006-02-25T09:10:36
revision	2

sched_exp_time	5000.000000
ontime	5088.3869206011
ontime7	5088.3869206011
l1events	49717

### 2.1.4 Events

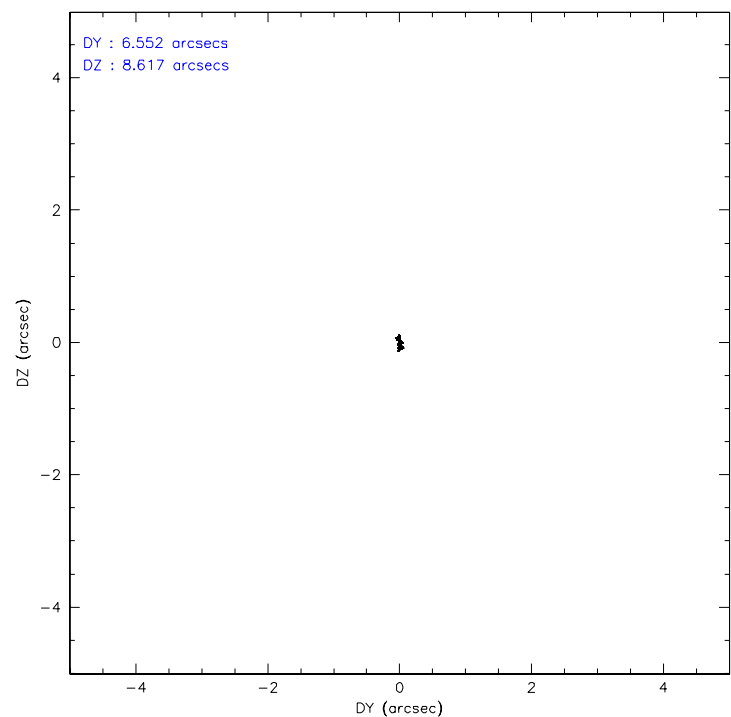
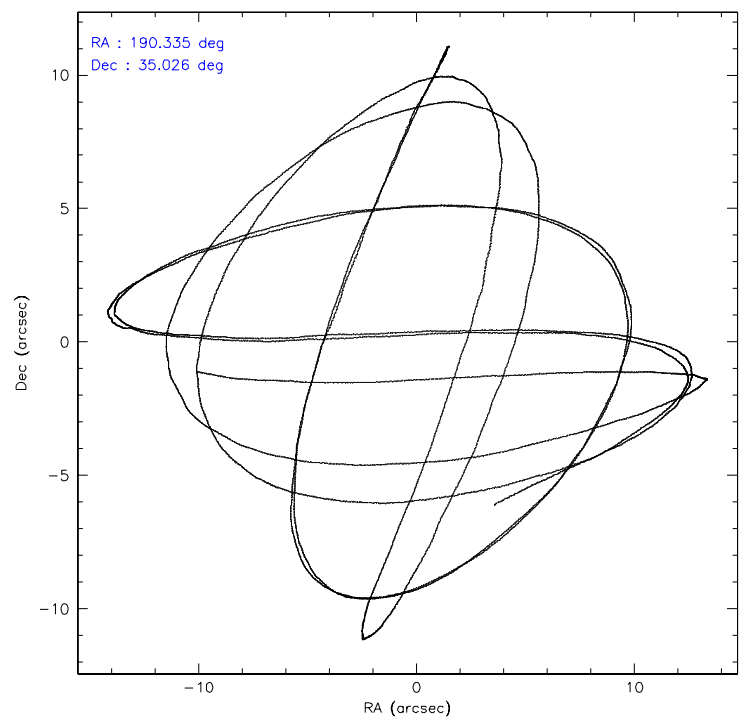
	<b>ccd 7</b>
level 1 events	49717
rejected events	30473
rejected %	61%

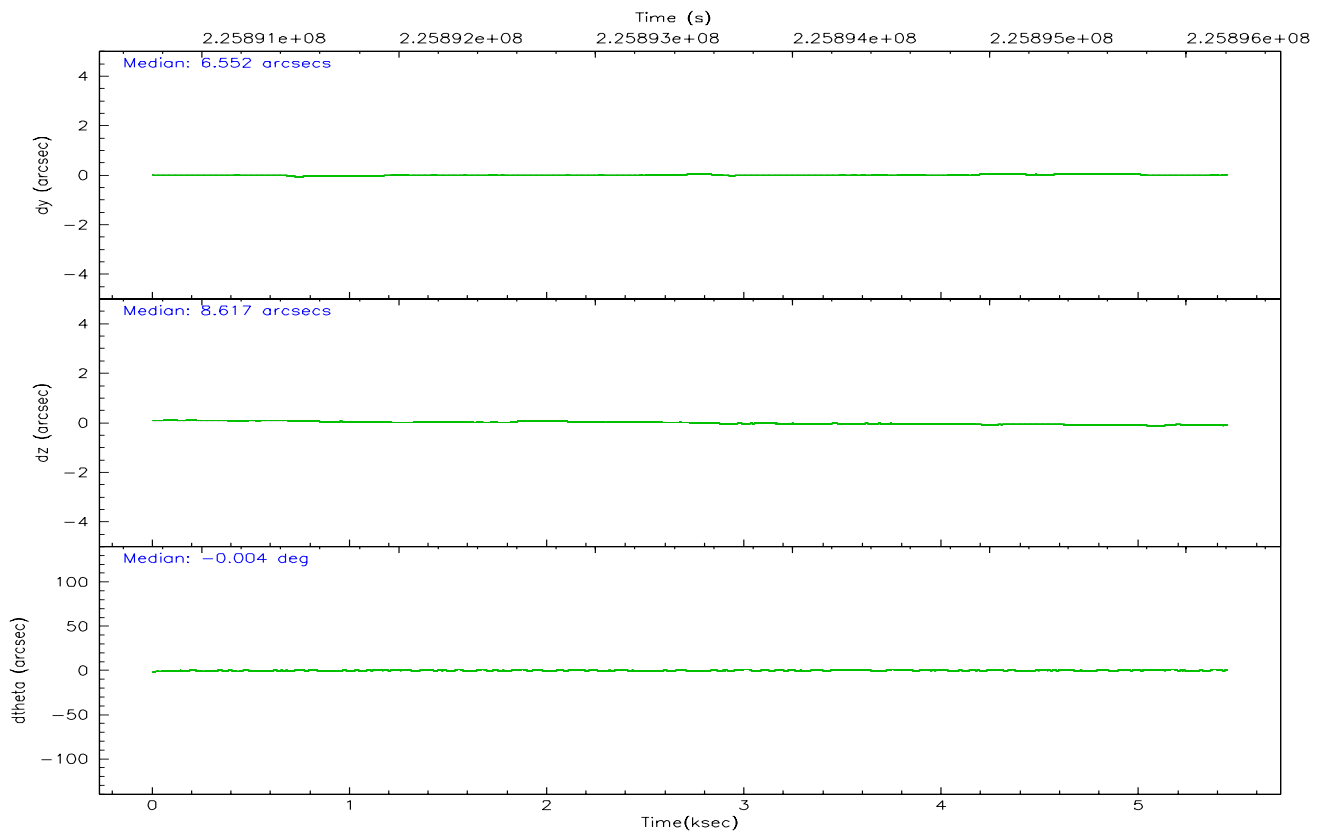
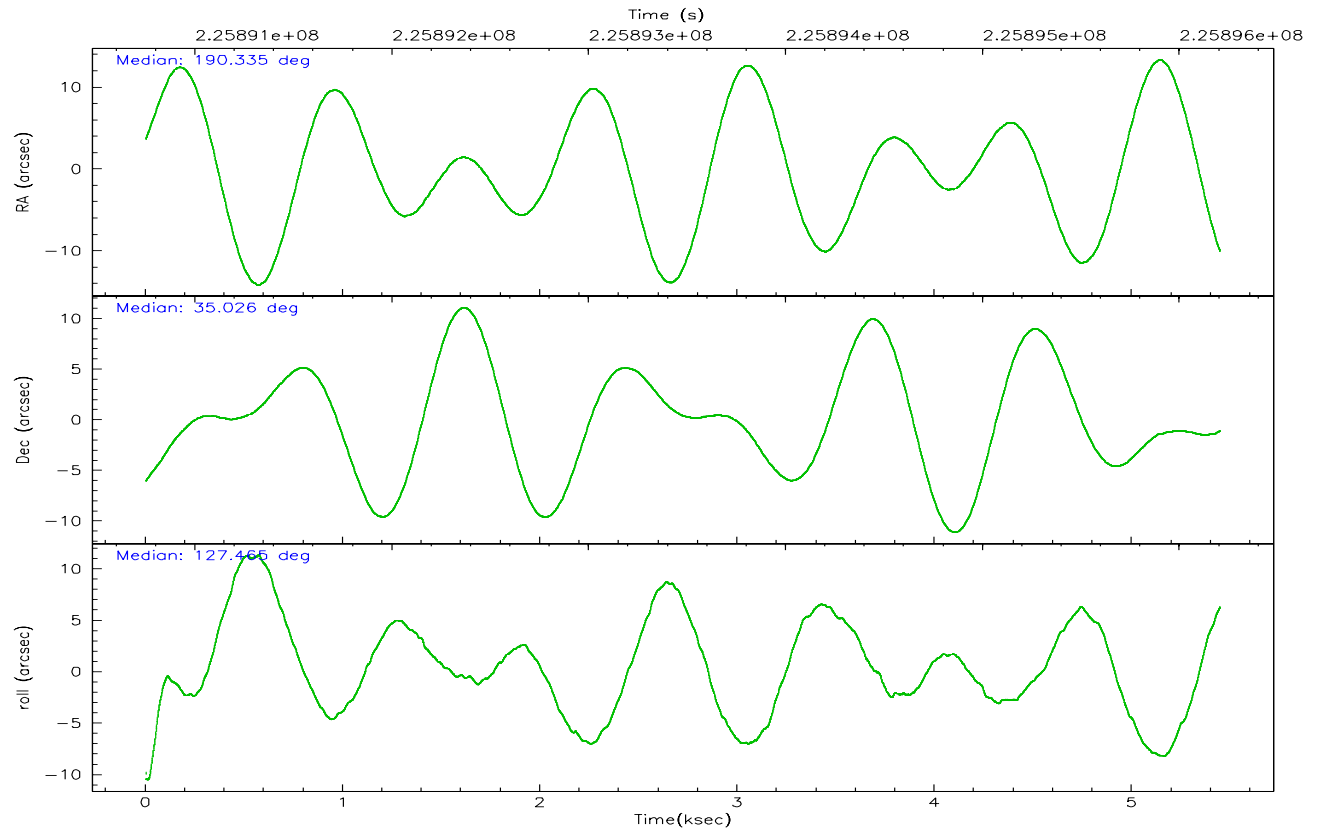
	<b>ccd 7</b>
grade 0 events	1038
	2%
grade 1 events	24
	0%
grade 2 events	4970
	9%
grade 3 events	914
	1%
grade 4 events	913
	1%
grade 5 events	3117
	6%
grade 6 events	11438
	23%
grade 7 events	27303
	54%

## 2.2 Compared Parameters

Parameter	Planned	Actual	Parameter	Planned	Actual
Instrument	ACIS	ACIS	Obspar format version number	6	6
Detector	ACIS-7	ACIS-7	Obspar file type	PREDICTED	ACTUAL
Grating	NONE	NONE	Obspar update status	NONE	UPDATED
Data mode	FAINT	FAINT	On-chip summing requested	N	N
Observation mode	POINTING	POINTING	Subarray requested	NONE	NONE
Pointing RA	190.365871	190.3351047540163	Alternating exposures requested	N	N
Pointing Dec	35.015442	35.02545934727183	Primary exposure time	0.000000	3.2
Pointing Roll	127.296955	127.4712360584374			
SIM focus pos (mm)	-0.684267	-0.6828225247311905			
SIM defocus (mm)	0	0.001444936568705701			
SIM translation stage pos (mm)	-190.132523	-190.1425803651734			
SIM translation stage offset (mm)	0	0.01005778216563158			
Observation start time	225891202.184000	225890369.26134			
Observation start date	2005-02-27T11:32:18	2005-02-27T11:19:29			
Observation end time	225896202.184000	225896753.47412			
Observation end date	2005-02-27T12:55:38	2005-02-27T13:05:53			
Read mode	TIMED	TIMED			

2.3 Aspect





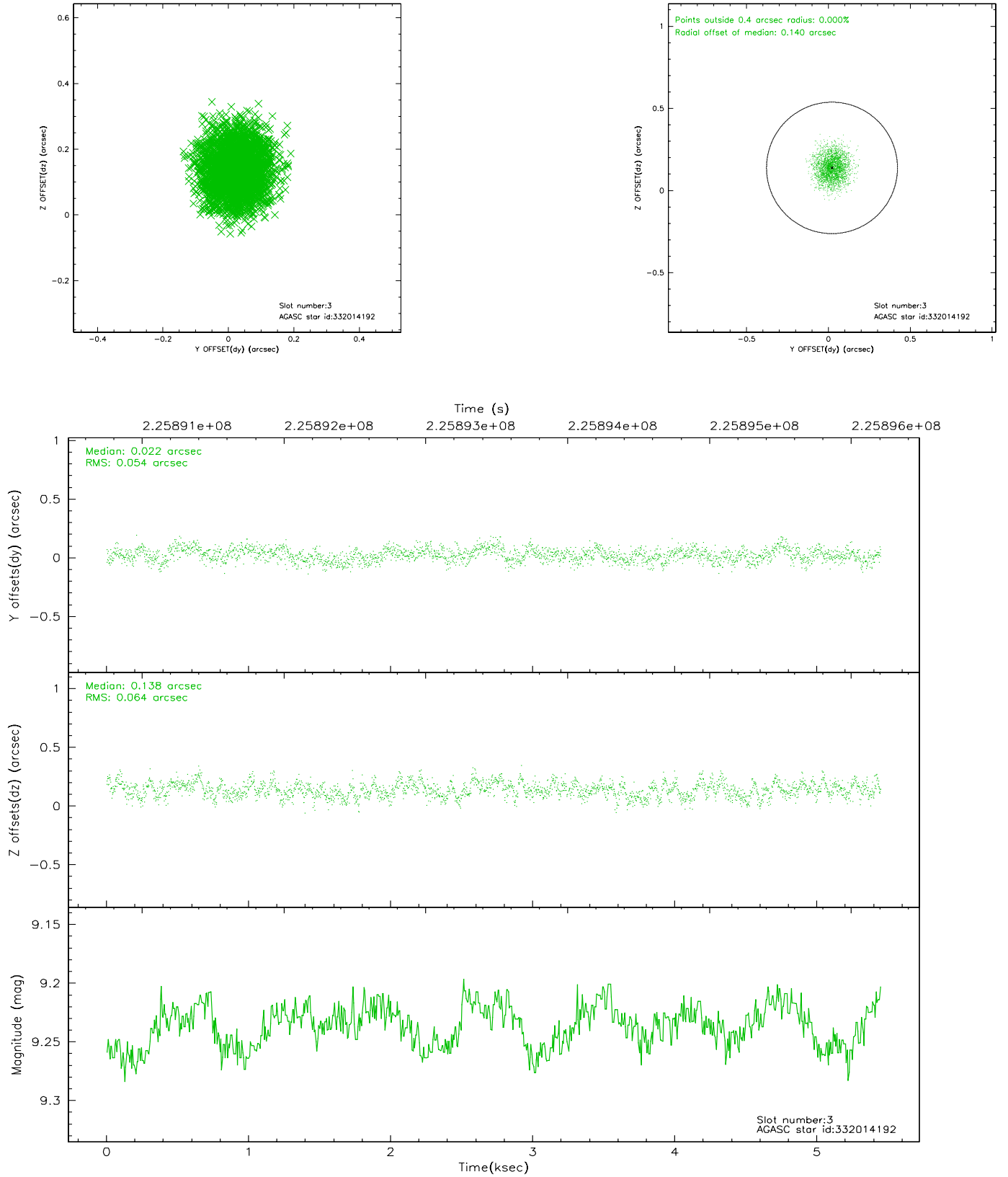
### Slot Statistics

slot	status	id	mag	n_pts	med_dy	med_dz	dr1	dr2	ra	dec	mean_y	mean_z
0	FID	ACIS-S-2	7.10	1328	-0.022	-0.020	0.006	0.010	0.000000	0.000000	-759.32	-1729.79
1	FID	ACIS-S-4	7.21	1328	0.027	0.016	0.004	0.008	0.000000	0.000000	2153.51	177.58
2	FID	ACIS-S-5	7.23	1329	-0.037	0.013	0.006	0.010	0.000000	0.000000	-1810.75	172.52
3	GUIDE	332014192	9.24	2652	0.022	0.138	0.091	0.142	190.471528	35.049316	-91.16	-321.22
4	GUIDE	332015640	9.33	2657	0.312	0.011	0.274	0.373	190.909260	35.310478	-117.78	-1915.68
5	GUIDE	332016416	9.61	2651	-0.227	-0.081	0.169	0.249	190.524699	35.806671	1985.75	-2095.33
6	GUIDE	332021344	8.31	2656	-0.005	-0.055	0.084	0.129	189.937719	35.086871	971.98	845.74
7	GUIDE	332021600	7.17	2656	-0.076	-0.007	0.083	0.130	190.219735	34.104561	-2344.06	2333.91

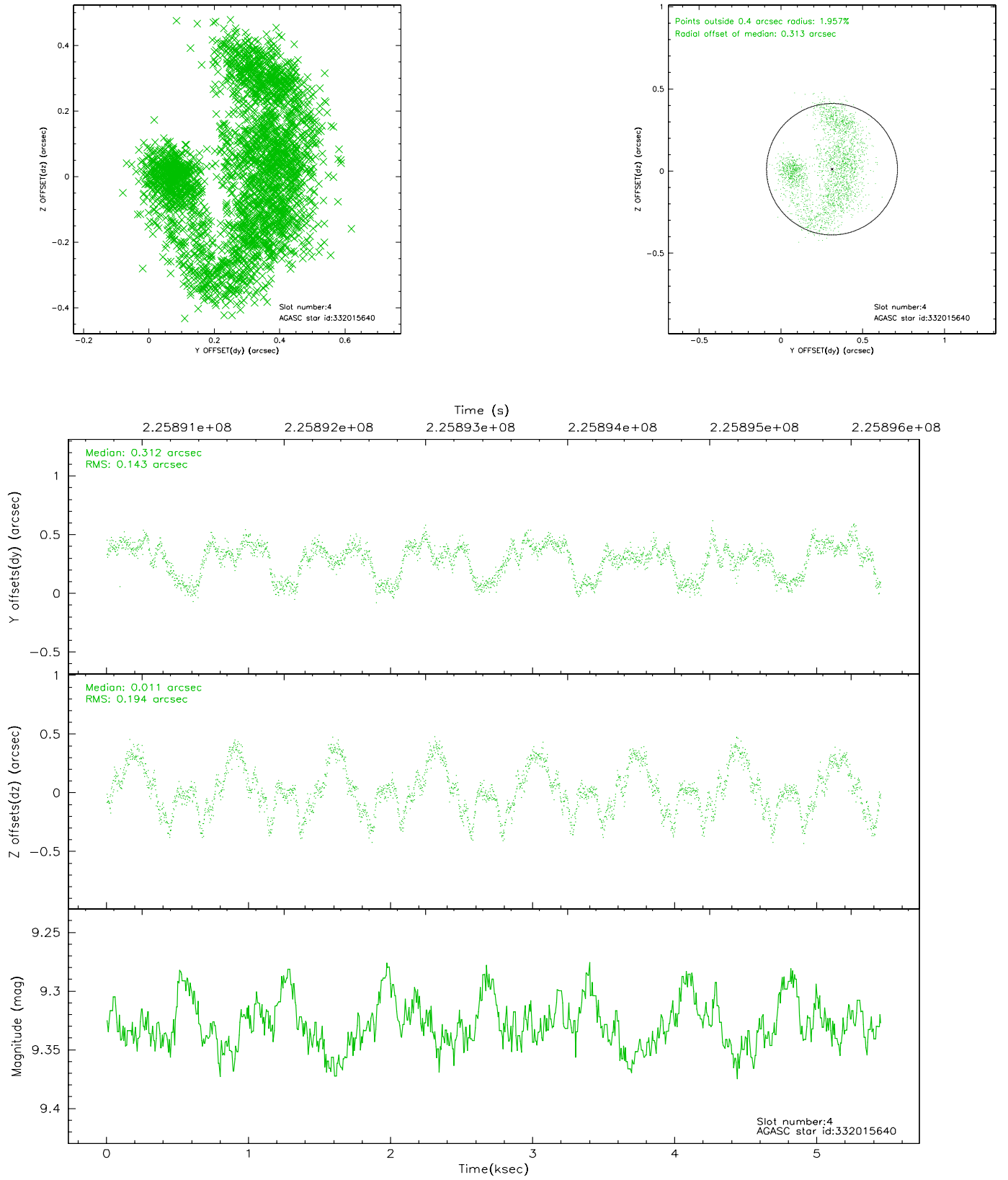


## 2.4 Star Slots

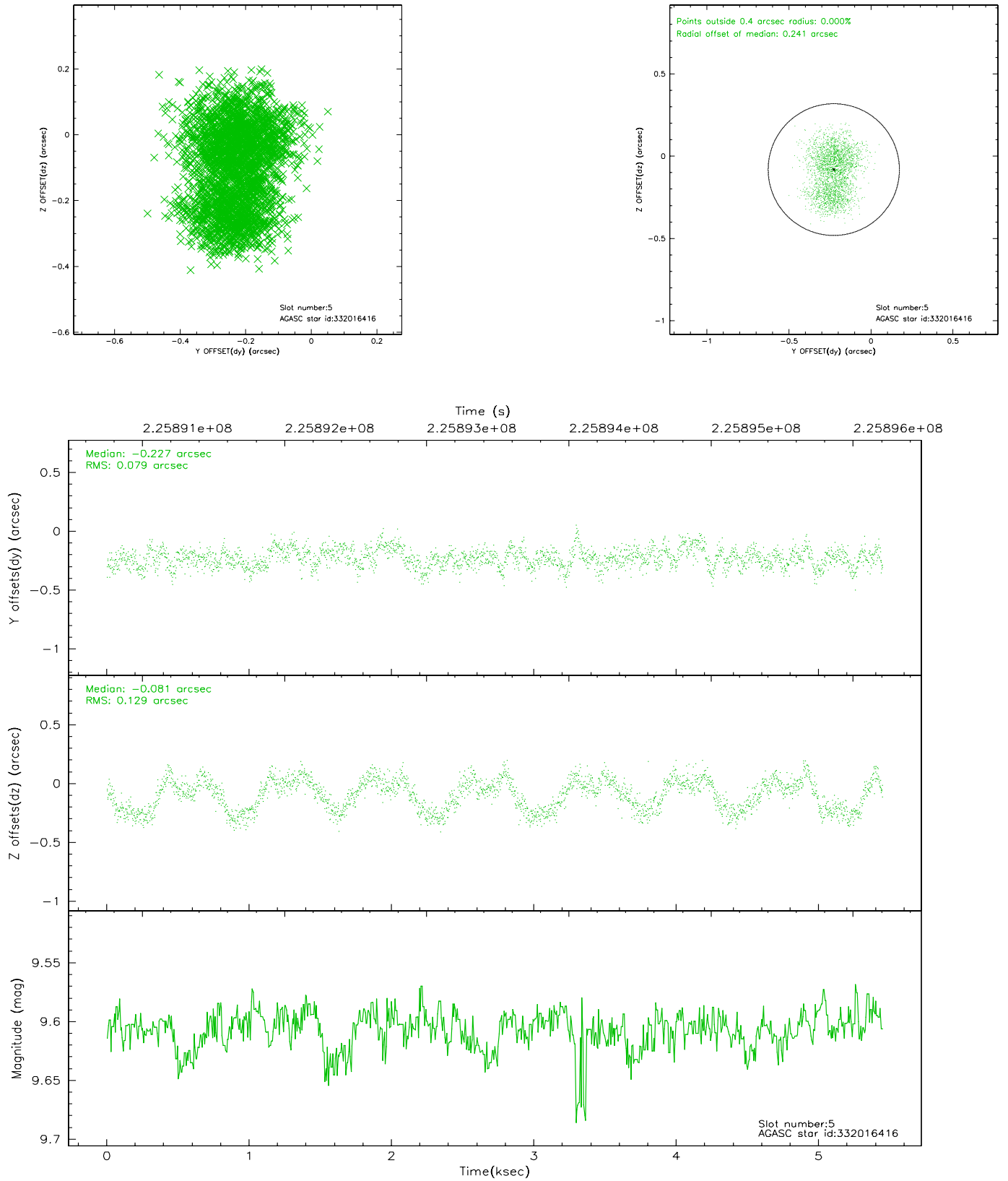
### 2.4.1 Slot 3



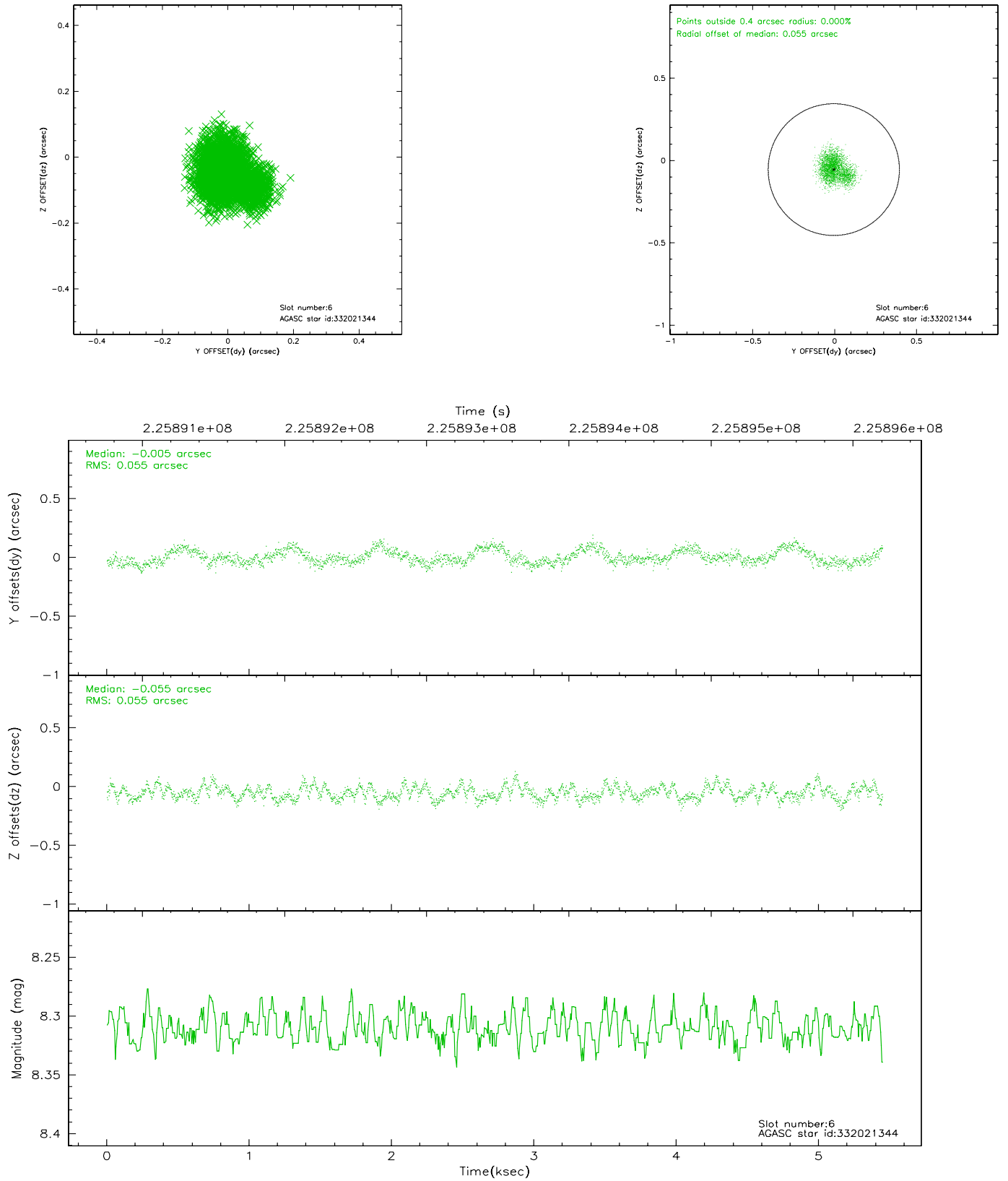
## 2.4.2 Slot 4



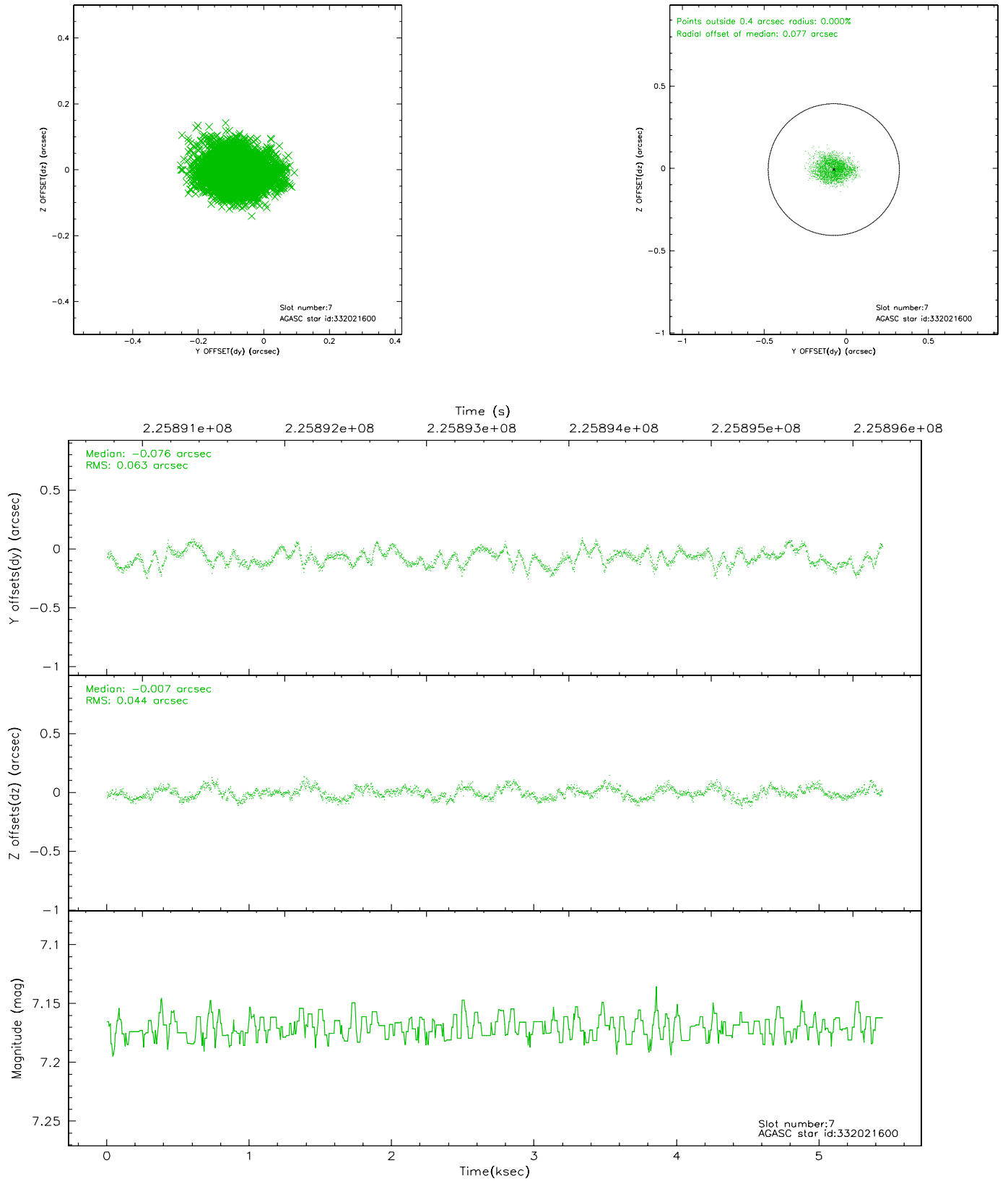
### 2.4.3 Slot 5



## 2.4.4 Slot 6

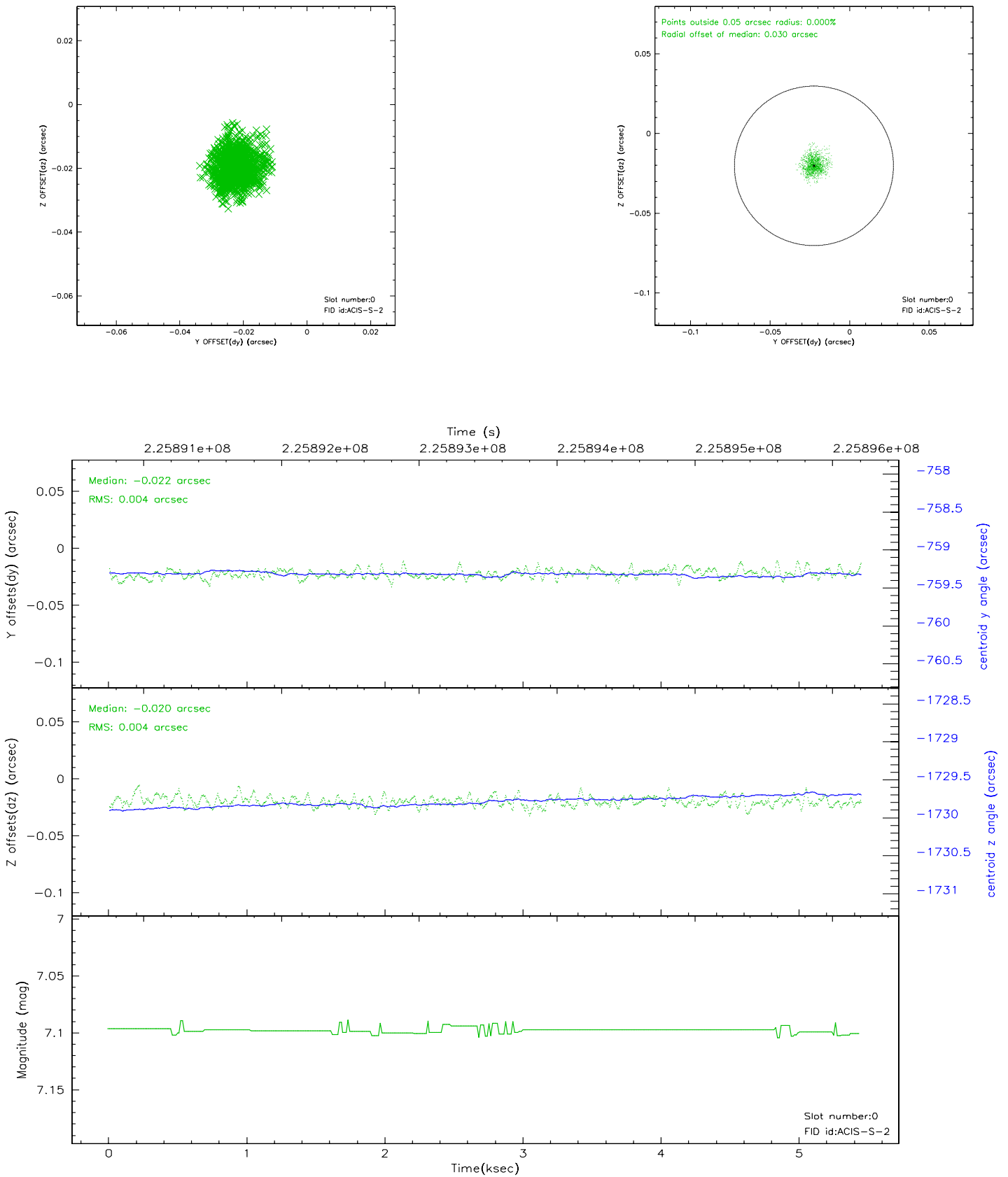


## 2.4.5 Slot 7

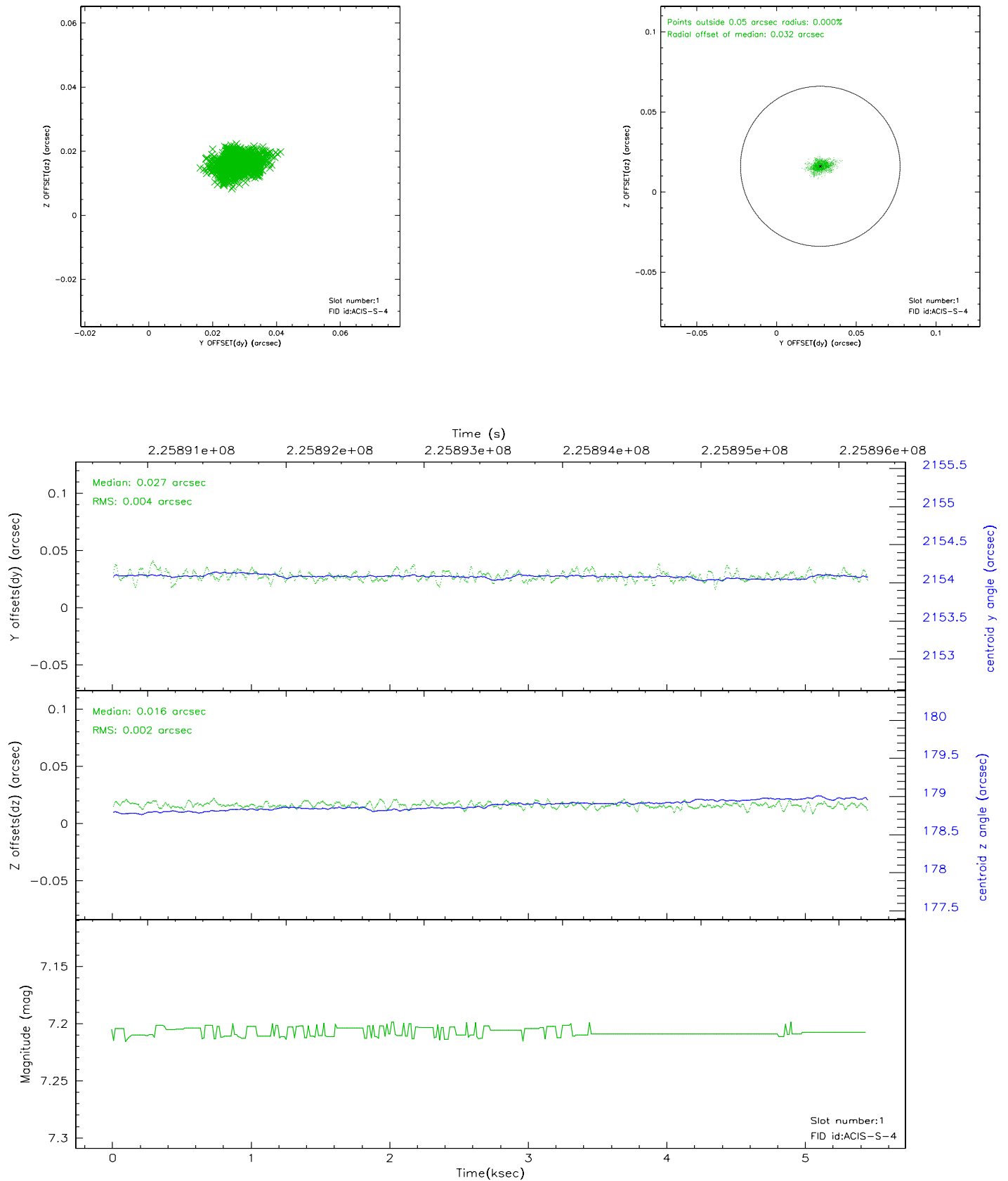


## 2.5 FID Slots

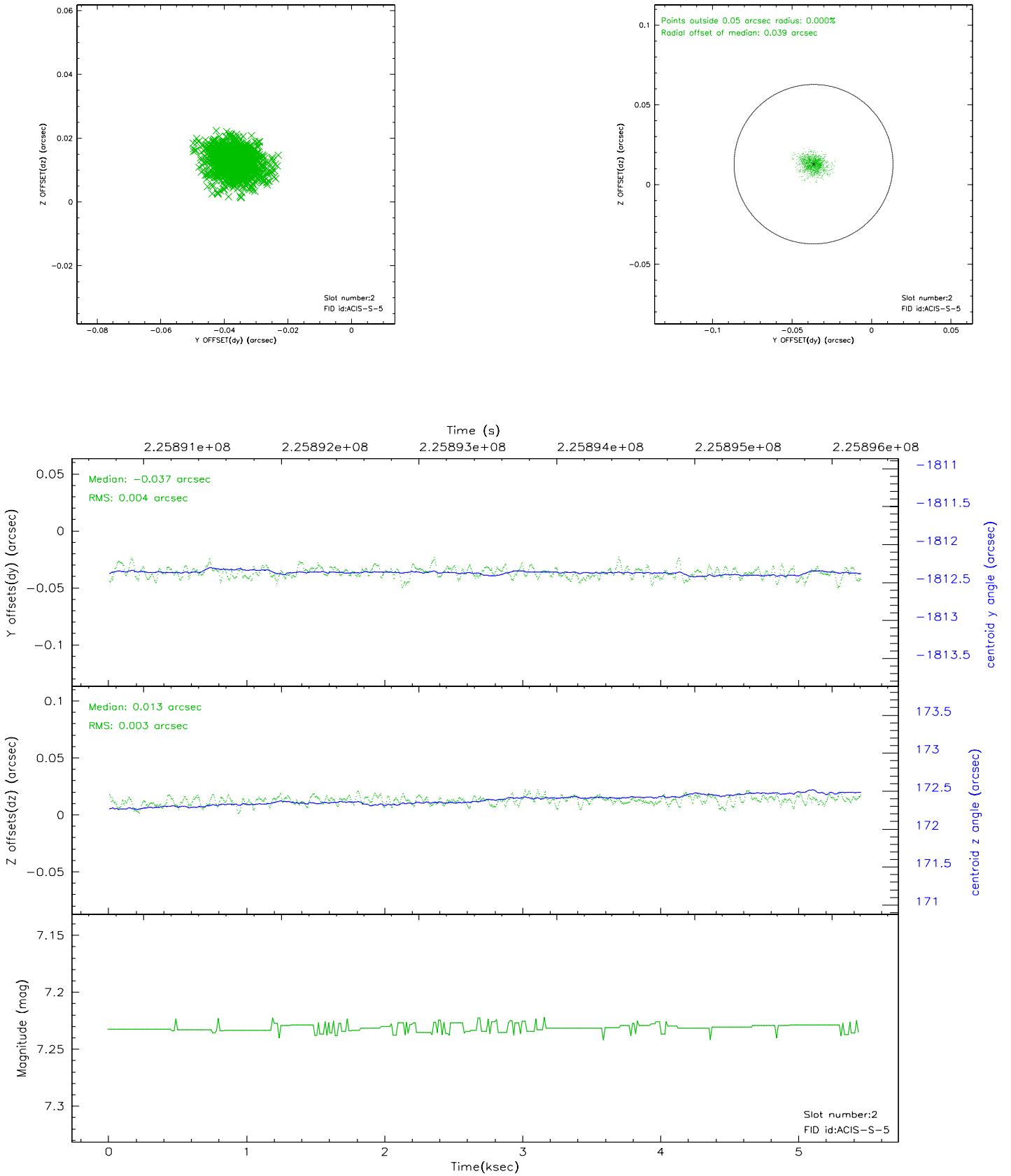
### 2.5.1 Slot 0



## 2.5.2 Slot 1



### 2.5.3 Slot 2





### 3 Point Sources

5.52 arcmin



## A Summary

### A.1 Status

V&V Scientist	Jen Lauer
V&V Date (YYYY-MM-DD)	2006.02.27
V&V Edition	1
V&V Disposition and Status	OK
V&V Charge Time	5.081599

### A.2 Comments