

V&V Reference Report

L2 ASCDS Version : 7.6.7.1

Observation 5666 - L2 Version 002
Chandra X-Ray Center

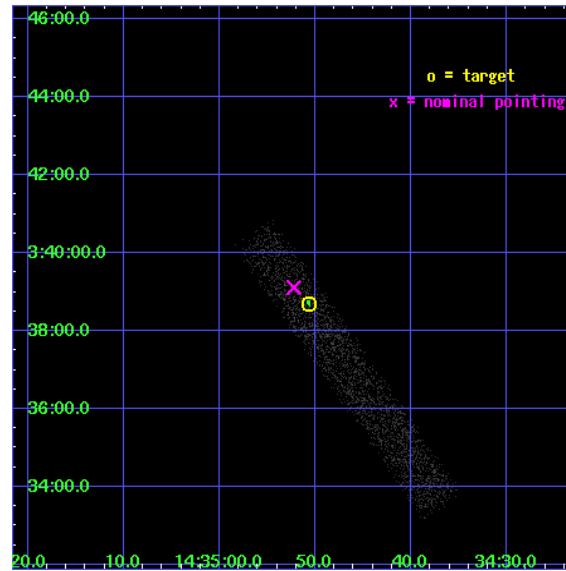
L2 Processing Date : Apr 8 2006

Contents

1	Front	2
2	OBI	3
2.1	OBI	3
2.1.1	Images	3
2.1.2	Bias	3
2.1.3	Parameters	4
2.1.4	Events	4
2.2	Compared Parameters	5
2.3	Aspect	6
2.4	Star Slots	9
2.4.1	Slot 3	9
2.4.2	Slot 4	10
2.4.3	Slot 5	11
2.4.4	Slot 6	12
2.4.5	Slot 7	13
2.5	FID Slots	14
2.5.1	Slot 0	14
2.5.2	Slot 1	15
2.5.3	Slot 2	16
3	Point Sources	17
A	Summary	18
A.1	Status	18
A.2	Comments	18

1 Front

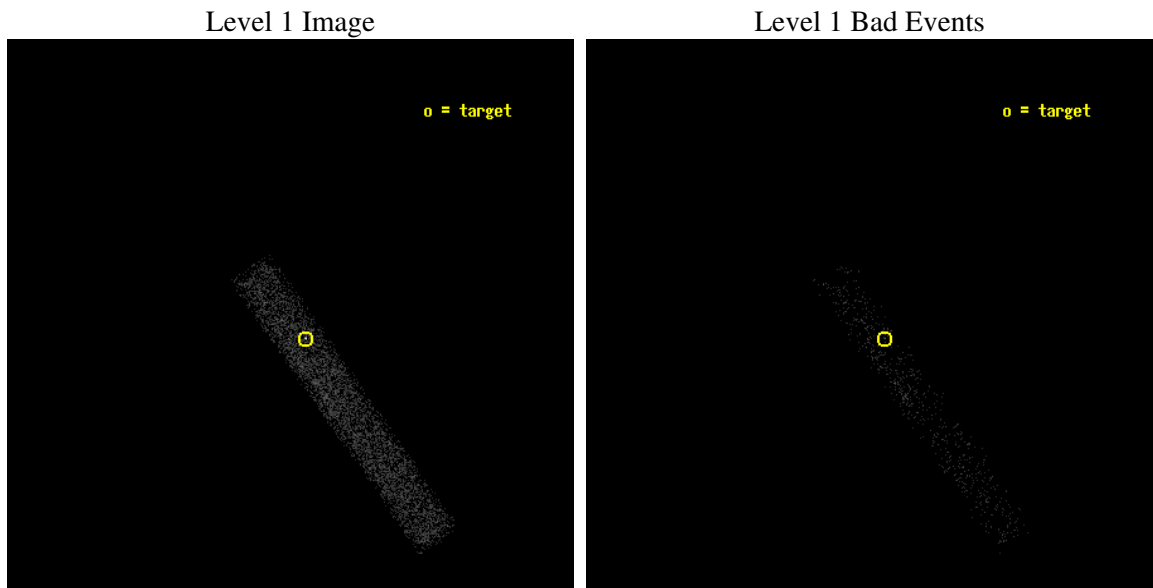
seq_num	701089
obs_id	5666
title	X-ray Properties of AGNs with Intermediate-mass Black Holes
observer	Dr. Luis Ho
object	SDSS J143450.62+033842.5
dtcycle	0
cycle	P
ra_targ	218.710833
dec_targ	3.645139
ra_nom	218.7177125912
dec_nom	3.6518645863852
roll_nom	54.868207360321
revision	2
ontime	5122.0000763237
livetime	4645.3837078939
ontime7	5122.0000763237
l2events	3332



2 OBI

2.1 OBI

2.1.1 Images



2.1.2 Bias

Chip 7



2.1.3 Parameters

obi_num	0
ascdsver	7.6.7.1
caldbver	3.2.1
date	2006-04-08T19:43:18
revision	2

sched_exp_time	4939.798000
ontime	6549.8053547144
ontime7	6549.8053547144
l1events	9118

2.1.4 Events

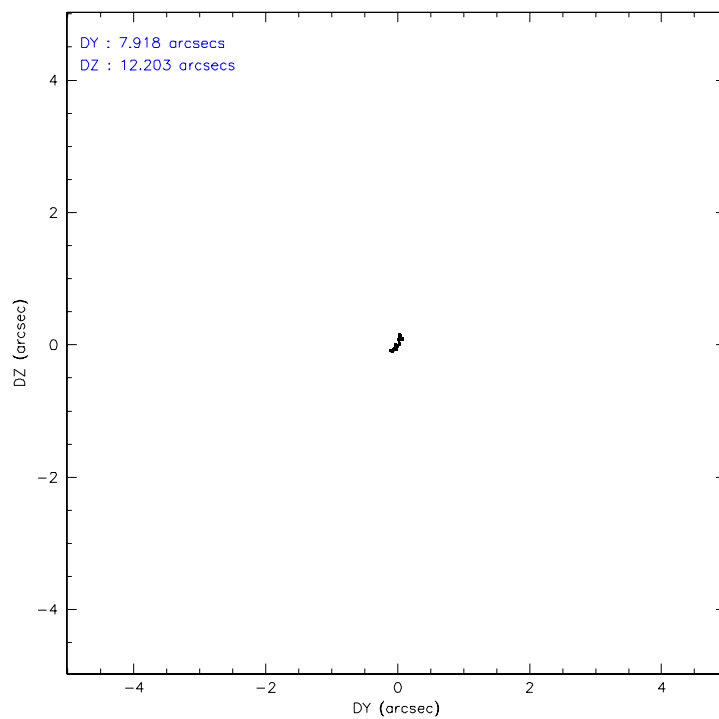
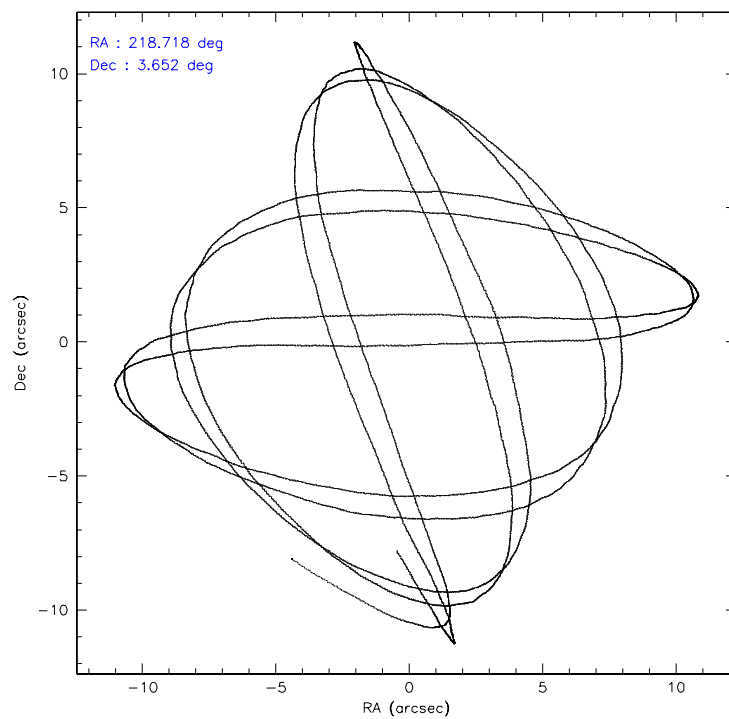
	ccd 7
level 1 events	9118
rejected events	5595
rejected %	61%

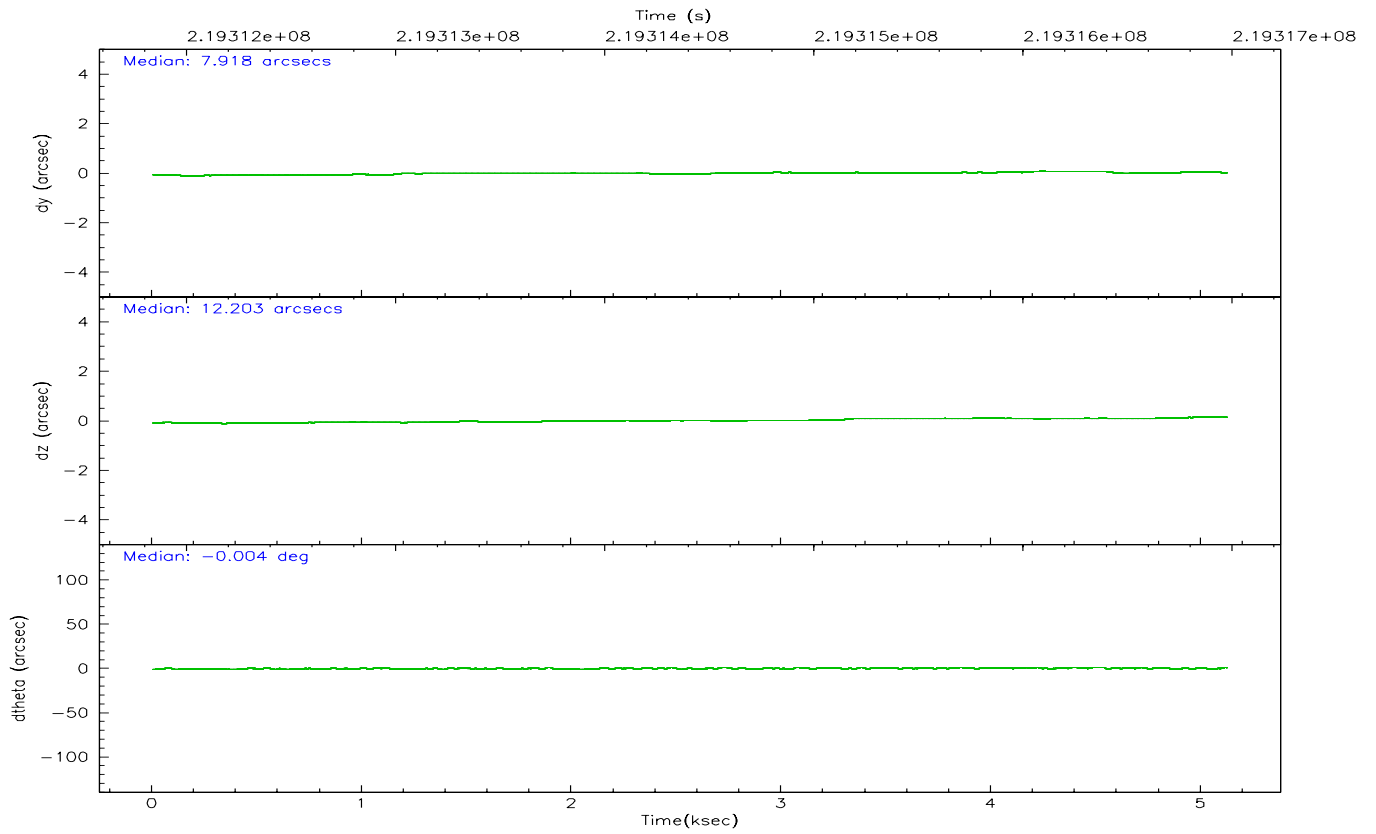
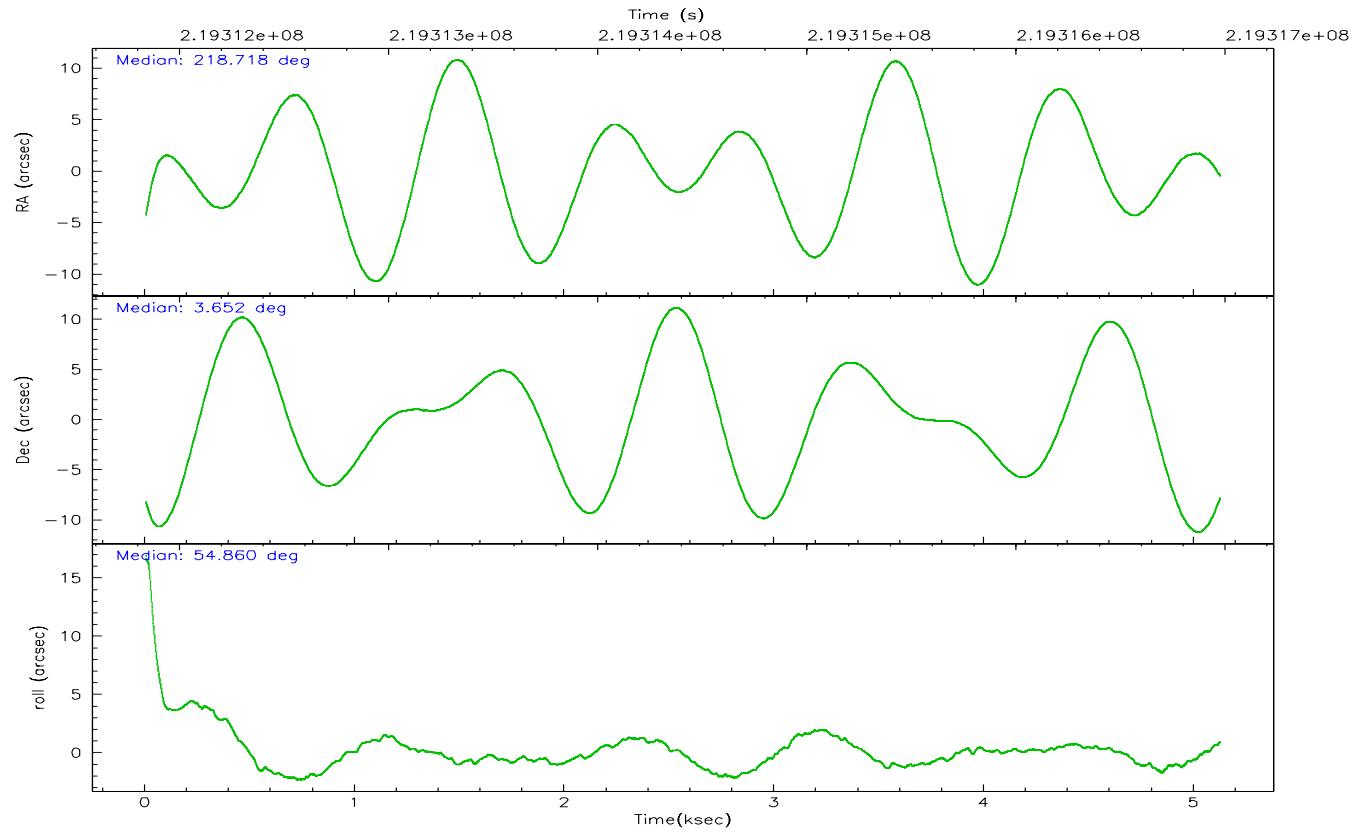
	ccd 7
grade 0 events	500
	5%
grade 1 events	9
	0%
grade 2 events	1001
	10%
grade 3 events	448
	4%
grade 4 events	443
	4%
grade 5 events	598
	6%
grade 6 events	1989
	21%
grade 7 events	4130
	45%

2.2 Compared Parameters

Parameter	Planned	Actual	Parameter	Planned	Actual
Instrument	ACIS	ACIS	Obspar format version number	6	6
Detector	ACIS-7	ACIS-7	Obspar file type	PREDICTED	ACTUAL
Grating	NONE	NONE	Obspar update status	NONE	UPDATED
Data mode	FAINT	FAINT	On-chip summing requested	N	N
Observation mode	POINTING	POINTING	Subarray requested	1/8	1/8
Pointing RA	218.715640	218.7177125912006	Subarray start row	0	449
Pointing Dec	3.624800	3.651864586385237	Subarray row count	1024	128
Pointing Roll	54.711702	54.86820736032143	Alternating exposures requested	N	N
SIM focus pos (mm)	-0.684267	-0.6828225247311905	Primary exposure time	0.000000	0.4
SIM defocus (mm)	0	0.001444936568705701			
SIM translation stage pos (mm)	-190.132523	-190.145094680475			
SIM translation stage offset (mm)	0	0.01257209746719923			
Observation start time	219312029.184000	219310419.90179			
Observation start date	2004-12-13T07:59:25	2004-12-13T07:33:39			
Observation end time	219316969.184000	219317199.25209			
Observation end date	2004-12-13T09:21:45	2004-12-13T09:26:39			
Read mode	TIMED	TIMED			

2.3 Aspect



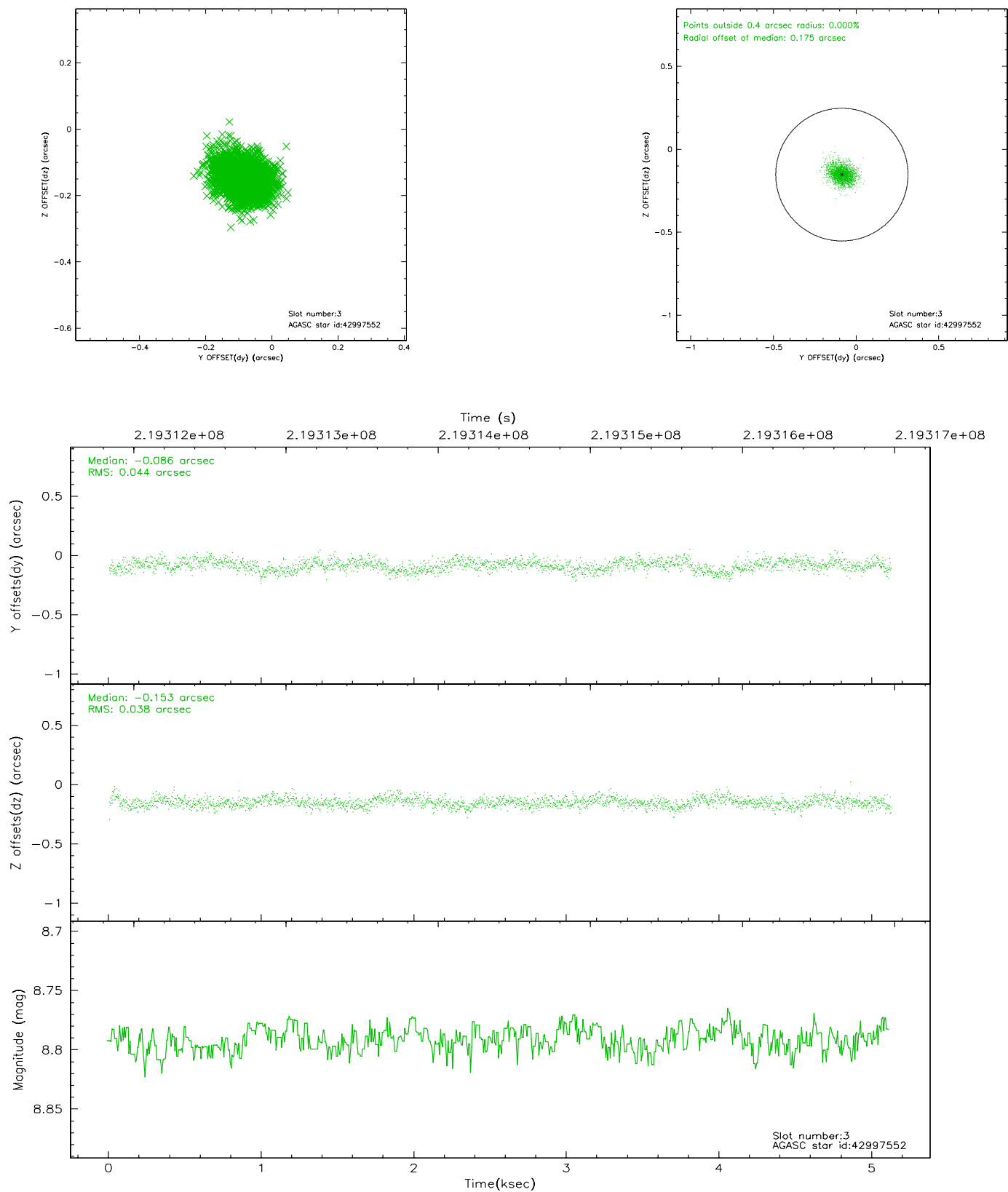


Slot Statistics

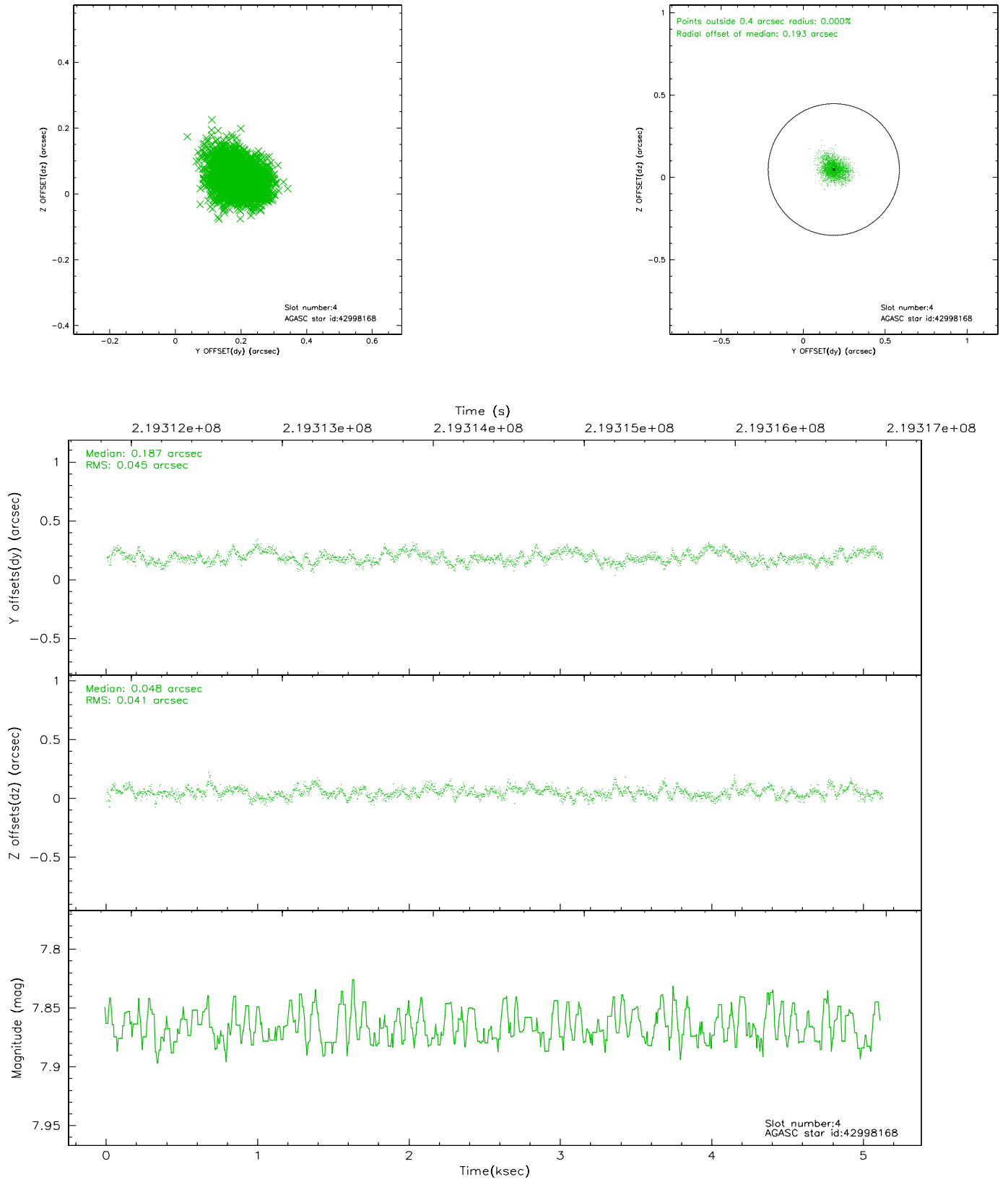
slot	status	id	mag	n_pts	med_dy	med_dz	dr1	dr2	ra	dec	mean_y	mean_z
0	FID	ACIS-S-2	7.10	1250	0.007	0.007	0.008	0.012	0.000000	0.000000	-760.69	-1733.41
1	FID	ACIS-S-4	7.20	1250	0.021	-0.005	0.006	0.010	0.000000	0.000000	2152.07	173.83
2	FID	ACIS-S-5	7.23	1248	-0.060	0.007	0.007	0.011	0.000000	0.000000	-1812.06	168.87
3	GUIDE	42997552	8.79	2499	-0.086	-0.153	0.062	0.101	218.755493	4.269191	1976.36	1223.76
4	GUIDE	42998168	7.87	2499	0.187	0.048	0.065	0.105	218.900058	3.467589	-77.91	-866.75
5	GUIDE	43005936	7.58	2500	0.160	-0.069	0.051	0.085	218.240457	3.659419	-883.76	1465.50
6	GUIDE	42992696	8.40	2500	0.038	-0.240	0.071	0.116	217.807530	3.501863	-2245.36	2409.25
7	GUIDE	42998344	7.15	2499	-0.305	0.410	0.049	0.082	219.477806	3.522009	1280.51	-2446.69

2.4 Star Slots

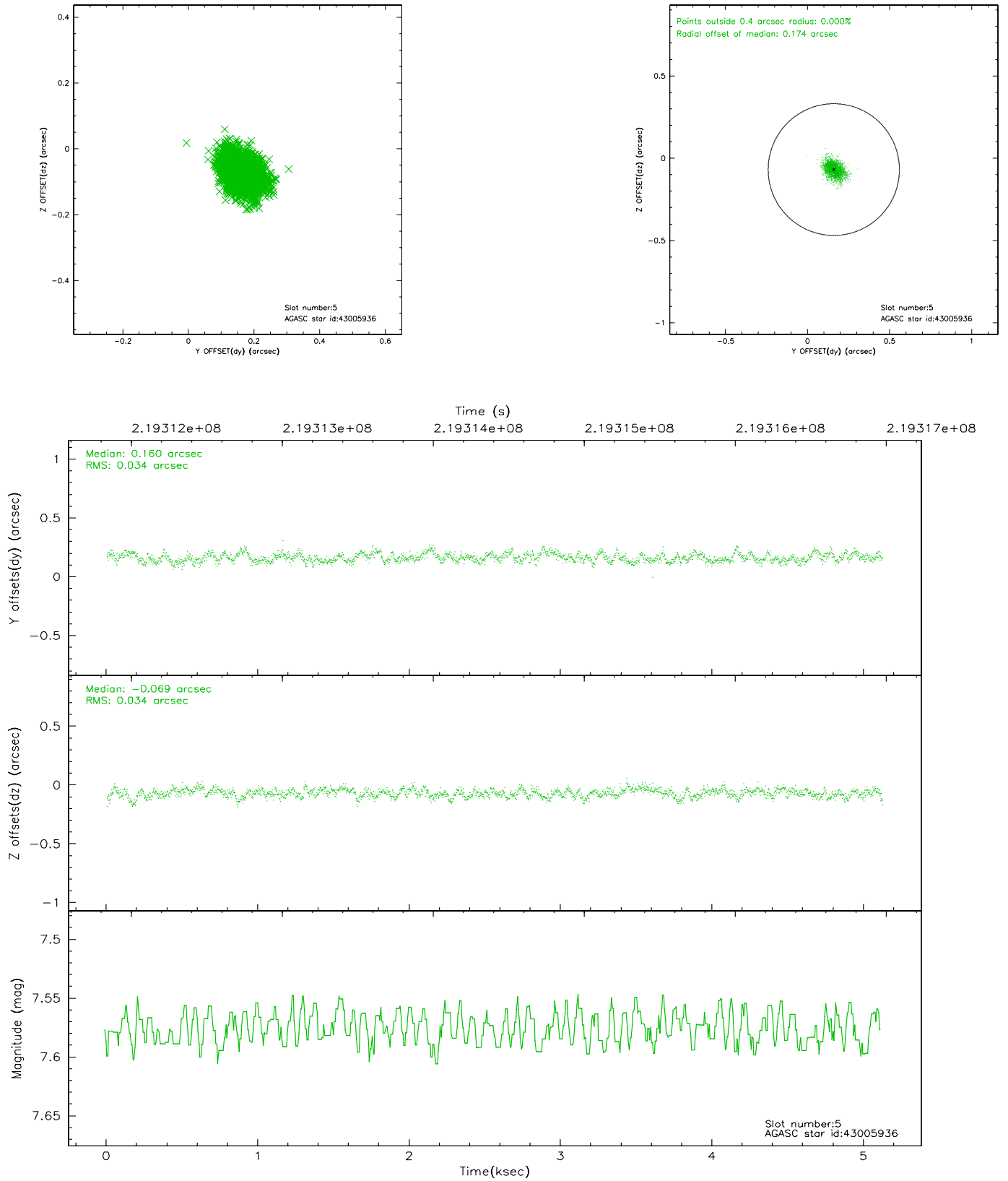
2.4.1 Slot 3



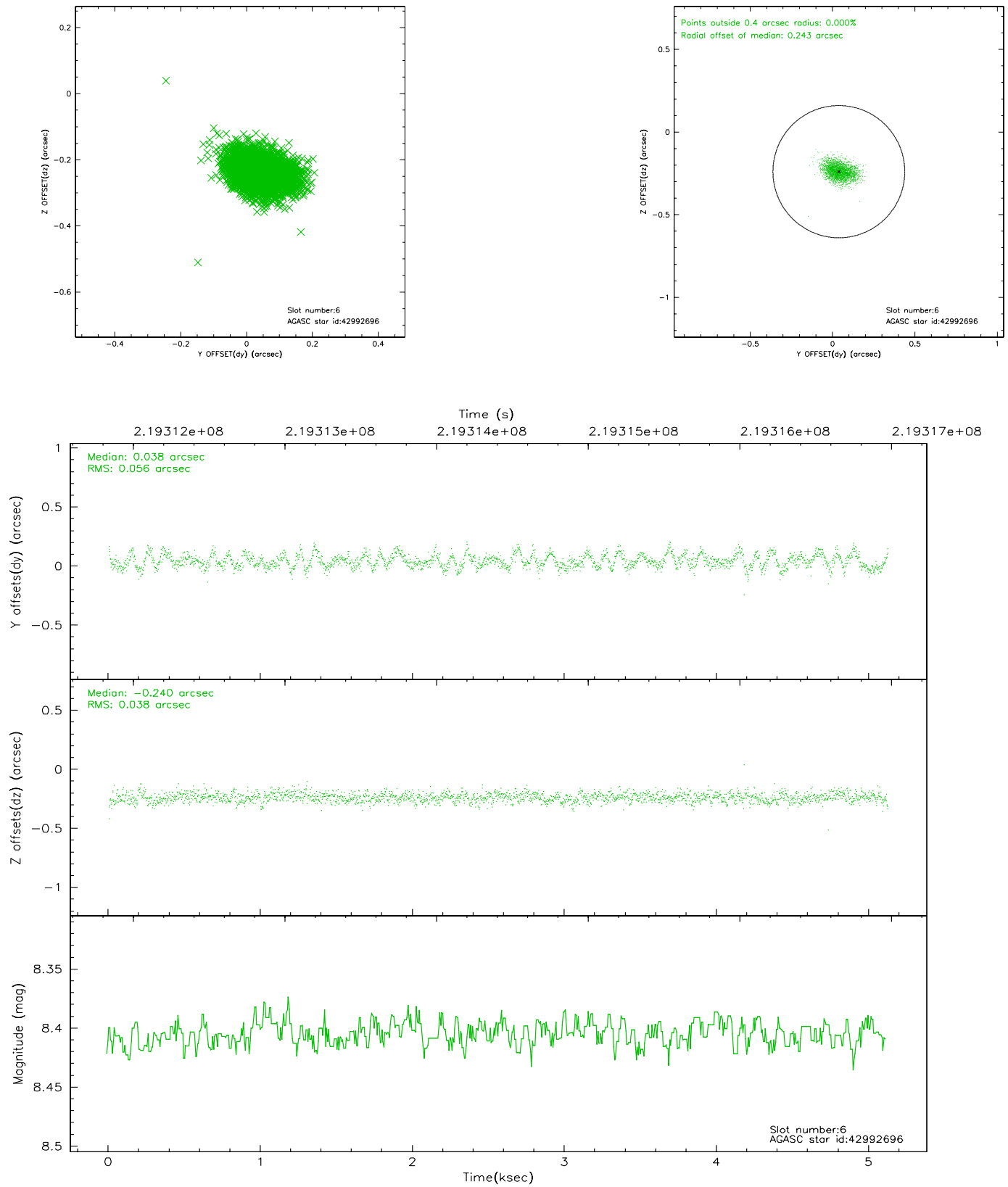
2.4.2 Slot 4



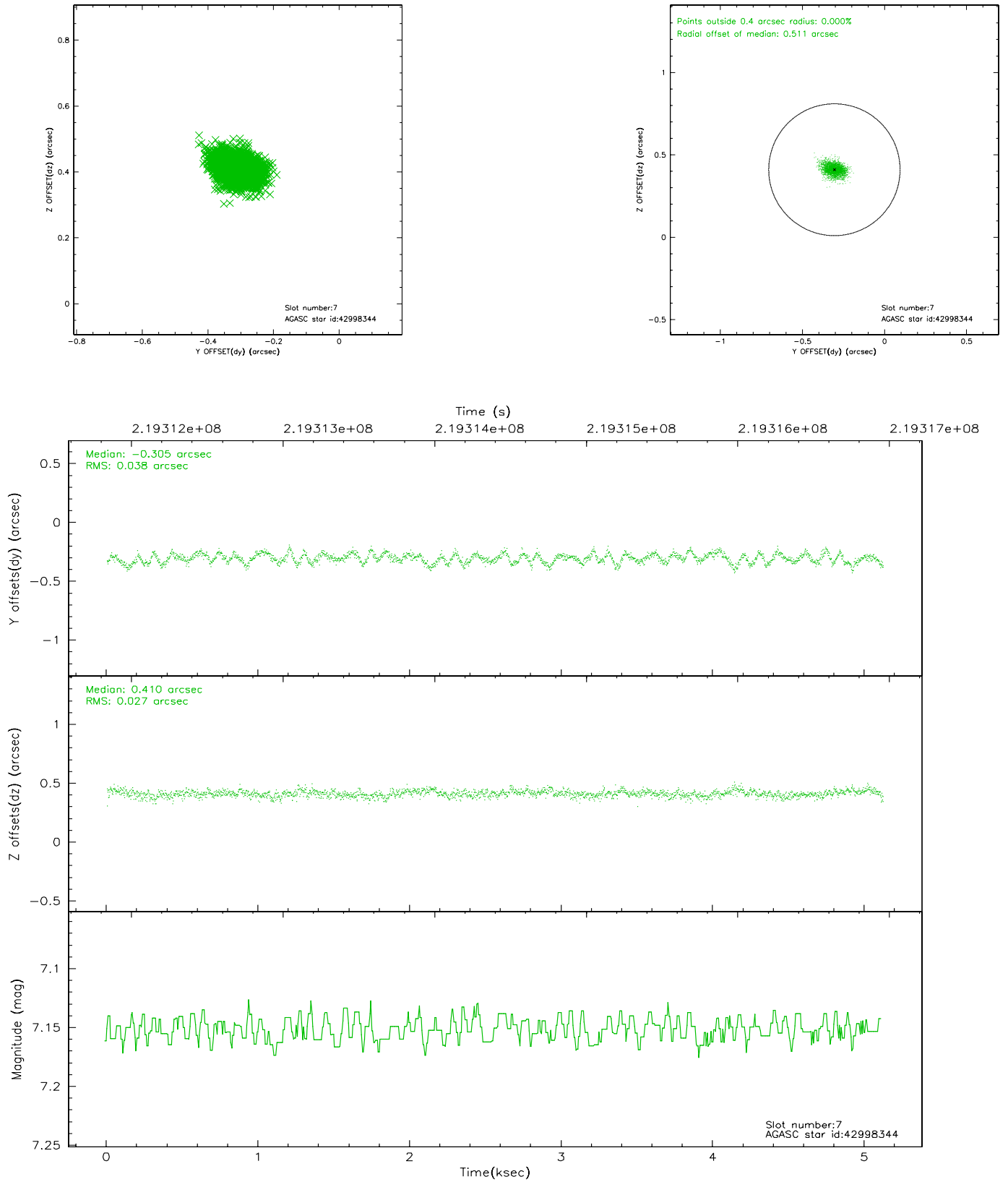
2.4.3 Slot 5



2.4.4 Slot 6

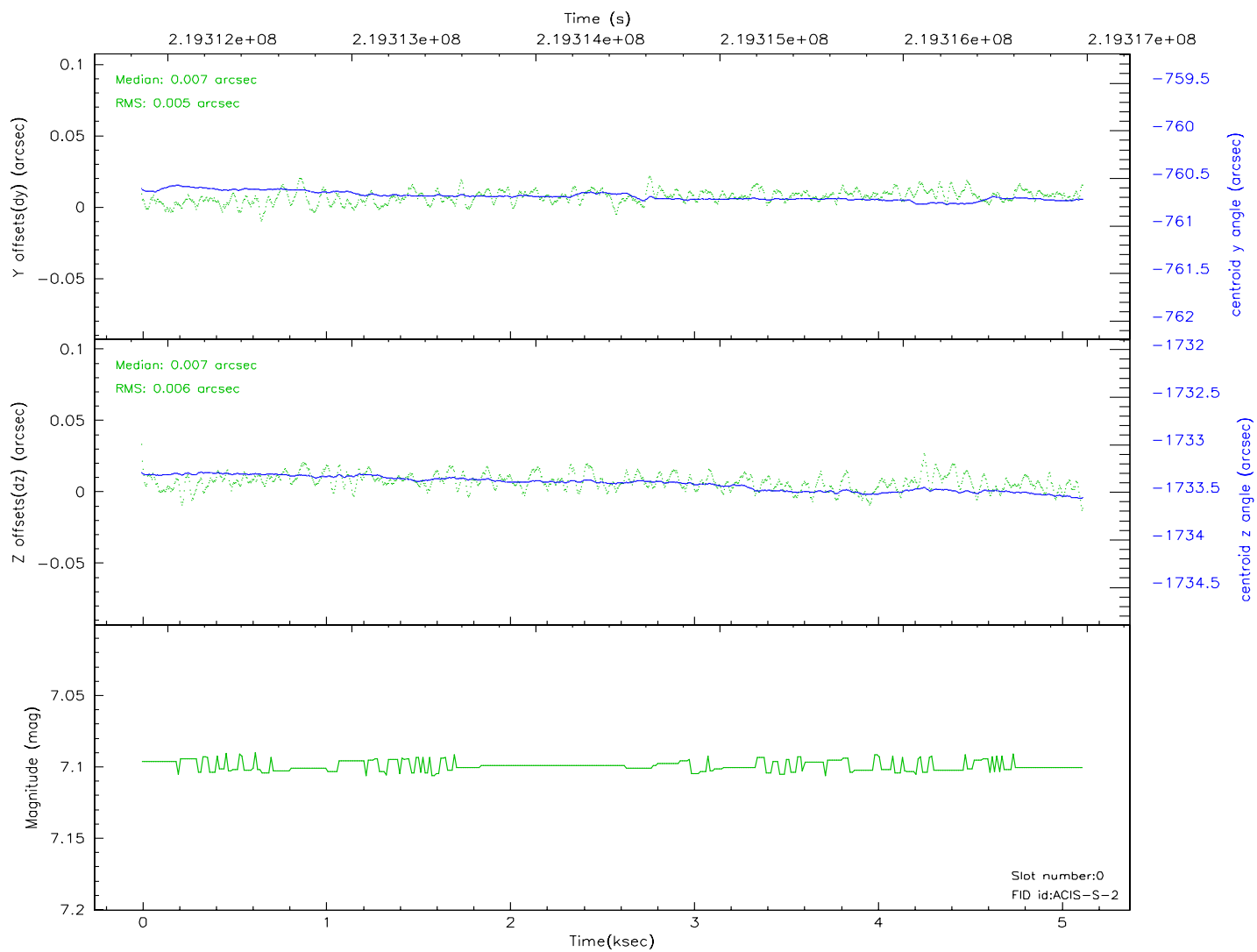
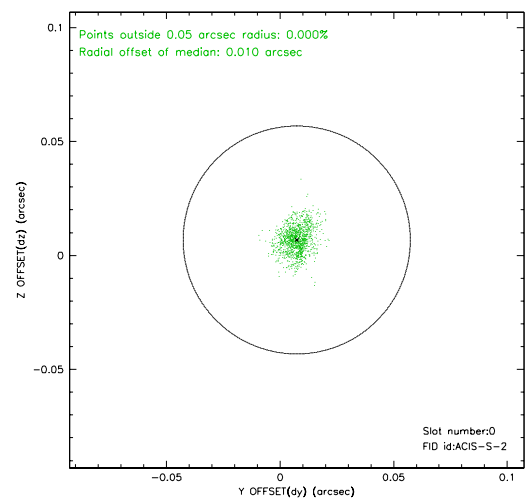
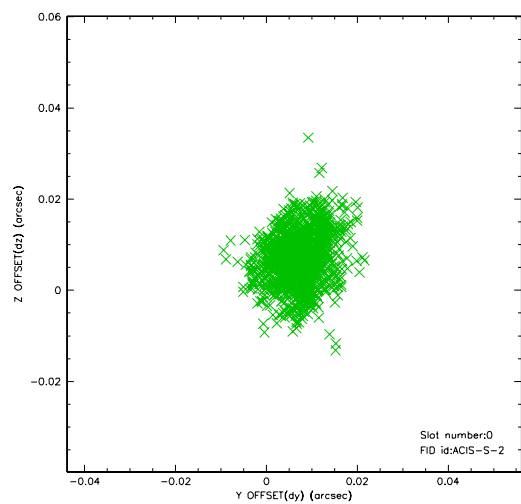


2.4.5 Slot 7

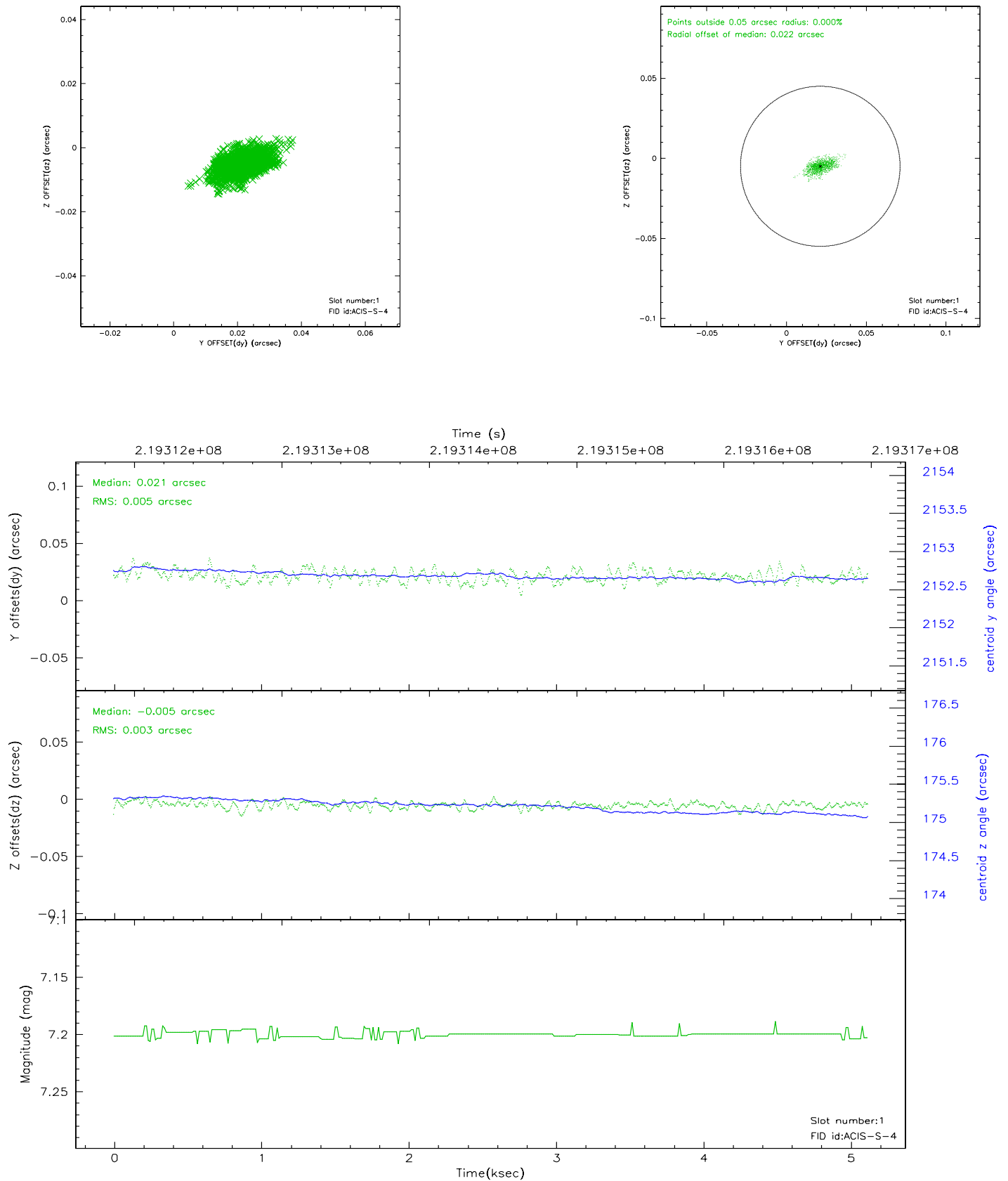


2.5 FID Slots

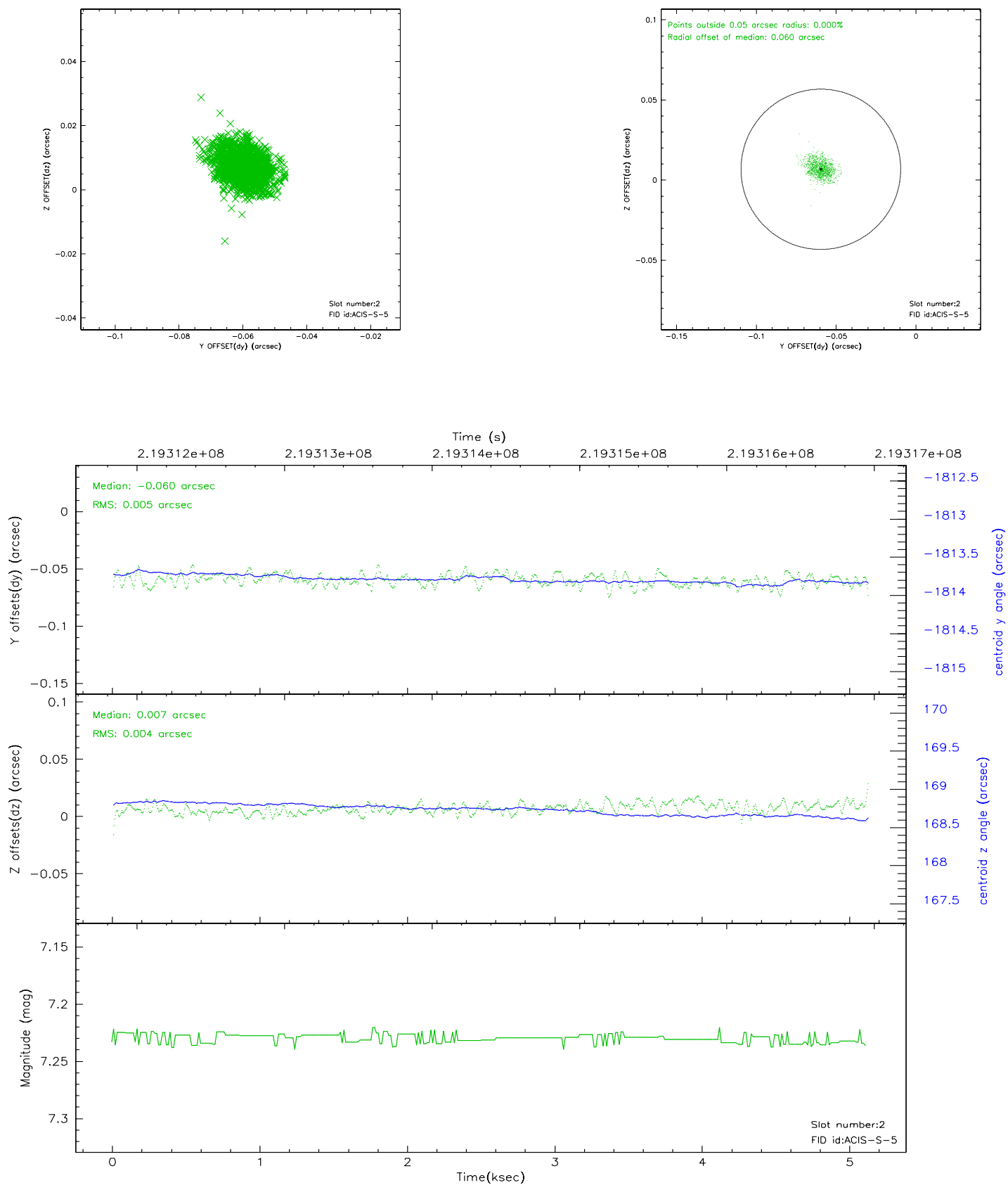
2.5.1 Slot 0



2.5.2 Slot 1



2.5.3 Slot 2



3 Point Sources

A Summary

A.1 Status

V&V Scientist	Beth Sundheim
V&V Date (YYYY-MM-DD)	2006.04.10
V&V Edition	1
V&V Disposition and Status	OK
V&V Charge Time	5.122

A.2 Comments