

# V&V Reference Report

## L2 ASCDS Version : 8.5.1.1

Observation 5654 - L2 Version 3  
Chandra X-Ray Center

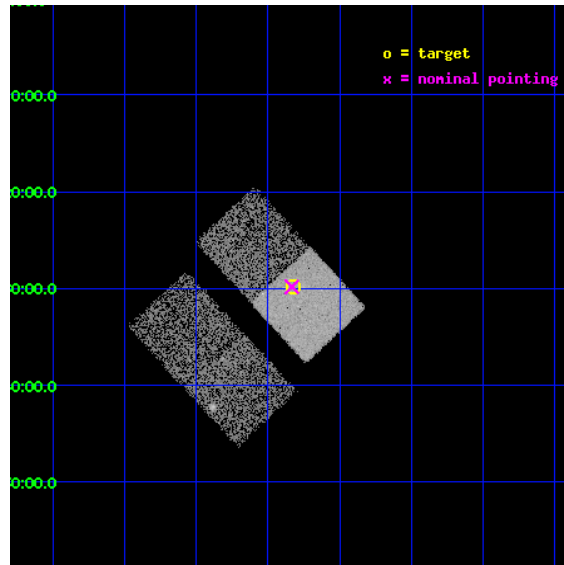
L2 Processing Date : Dec 30 2012

## Contents

<b>1</b>	<b>Front</b>	<b>2</b>
<b>2</b>	<b>OBI</b>	<b>3</b>
2.1	OBI . . . . .	3
2.1.1	Images . . . . .	3
2.1.2	Bias . . . . .	3
2.1.3	Parameters . . . . .	4
2.1.4	Events . . . . .	4
2.2	Compared Parameters . . . . .	5
2.3	Aspect . . . . .	6
2.4	Star Slots . . . . .	9
2.4.1	Slot 3 . . . . .	9
2.4.2	Slot 4 . . . . .	10
2.4.3	Slot 5 . . . . .	11
2.4.4	Slot 6 . . . . .	12
2.4.5	Slot 7 . . . . .	13
2.5	FID Slots . . . . .	14
2.5.1	Slot 0 . . . . .	14
2.5.2	Slot 1 . . . . .	15
2.5.3	Slot 2 . . . . .	16
<b>A</b>	<b>Summary</b>	<b>17</b>
A.1	Status . . . . .	17
A.2	Comments . . . . .	17

# 1 Front

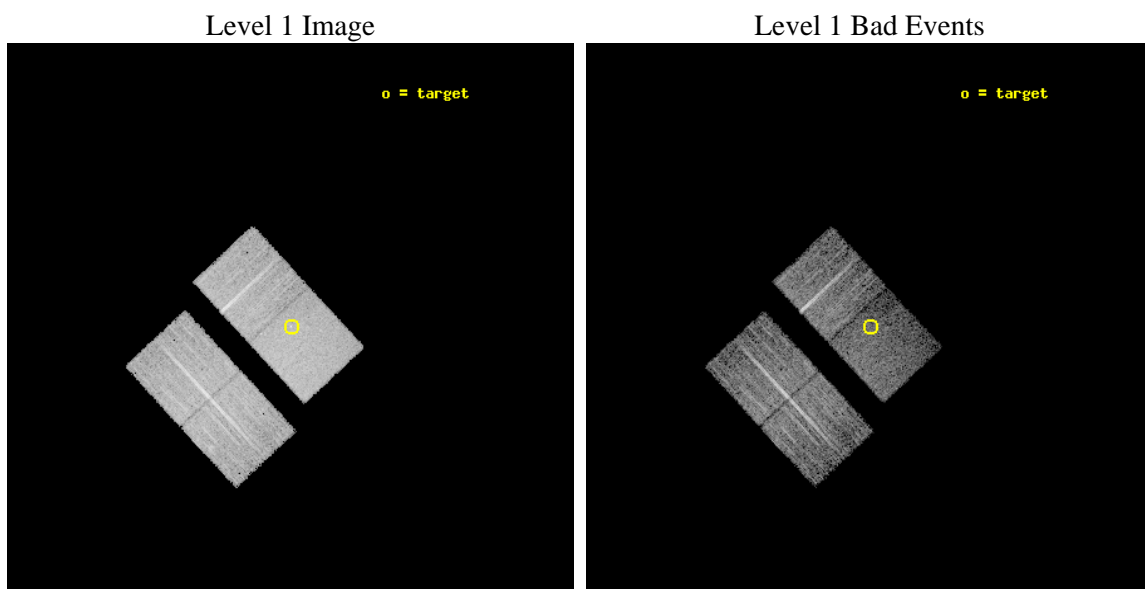
seq_num	701077	Sequence number
obs_id	5654	Observation id
title	The Spectral Energy Distribution and Fe II Emission in Intermediate-Redshift Narrow-line Seyfert 1 Galaxies	Proposal title
observer	Dr. Karen Leighly	Principal investigator
object	SDSS J032349.53-002949.7	Source name
dtcycle	0	&#160
cycle	P	events from which exps? Prim/Second/Both
ra_targ	50.95625	Observer's specified target RA [deg]
dec_targ	-0.497139	Observer's specified target Dec [deg]
ra_nom	50.958334828253	Nominal RA [deg]
dec_nom	-0.4972862474264	Nominal Dec [deg]
roll_nom	47.19341999071	Nominal Roll [deg]
revision	3	Processing version of data
ontime	8416.4999837875	Sum of GTIs [s]
livetime	8306.5322153622	Livetime [s]
ontime2	8416.4999837875	Sum of GTIs [s]
ontime3	8407.0770530403	Sum of GTIs [s]
ontime6	8416.4999837875	Sum of GTIs [s]
ontime7	8416.4999837875	Sum of GTIs [s]
l2events	41318	Number of level 2 events



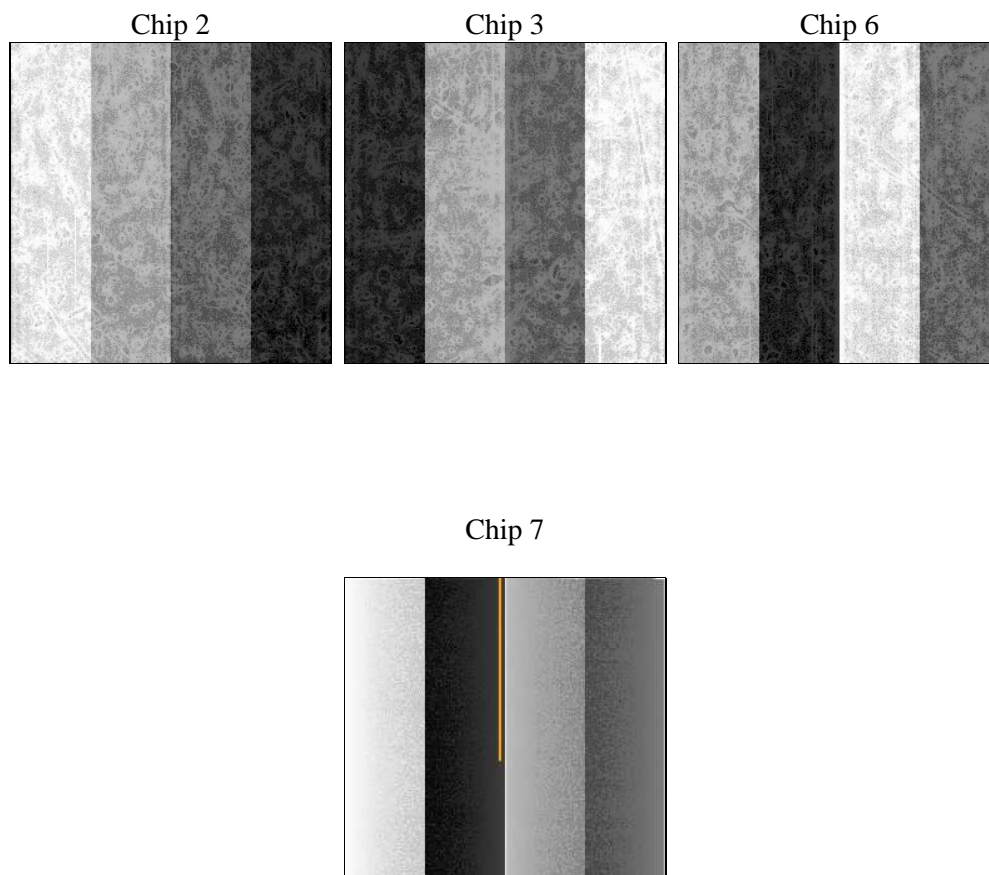
## 2 OBI

### 2.1 OBI

#### 2.1.1 Images



#### 2.1.2 Bias



### 2.1.3 Parameters

obi_num	1	Obi number	sched_exp_time	8300.000000	[s] Scheduled observation exposure time
ascdsver	8.5.1.1	Processing system revision	ontime	8416.4999837875	Sum of GTIs [s]
caldsver	4.5.5	&#160	ontime2	8416.4999837875	Sum of GTIs [s]
date	2012-12-30T22:44:33	Date and time of file creation	ontime3	8407.0770530403	Sum of GTIs [s]
revision	3	Processing version of data	ontime6	8416.4999837875	Sum of GTIs [s]
			ontime7	8416.4999837875	Sum of GTIs [s]
			l1events	245712	Number of level 1 events

### 2.1.4 Events

	ccd 2	ccd 3	ccd 6	ccd 7
level 1 events	60863	59292	58615	66942
rejected events	55767	53929	52983	38647
rejected %	91%	90%	90%	57%

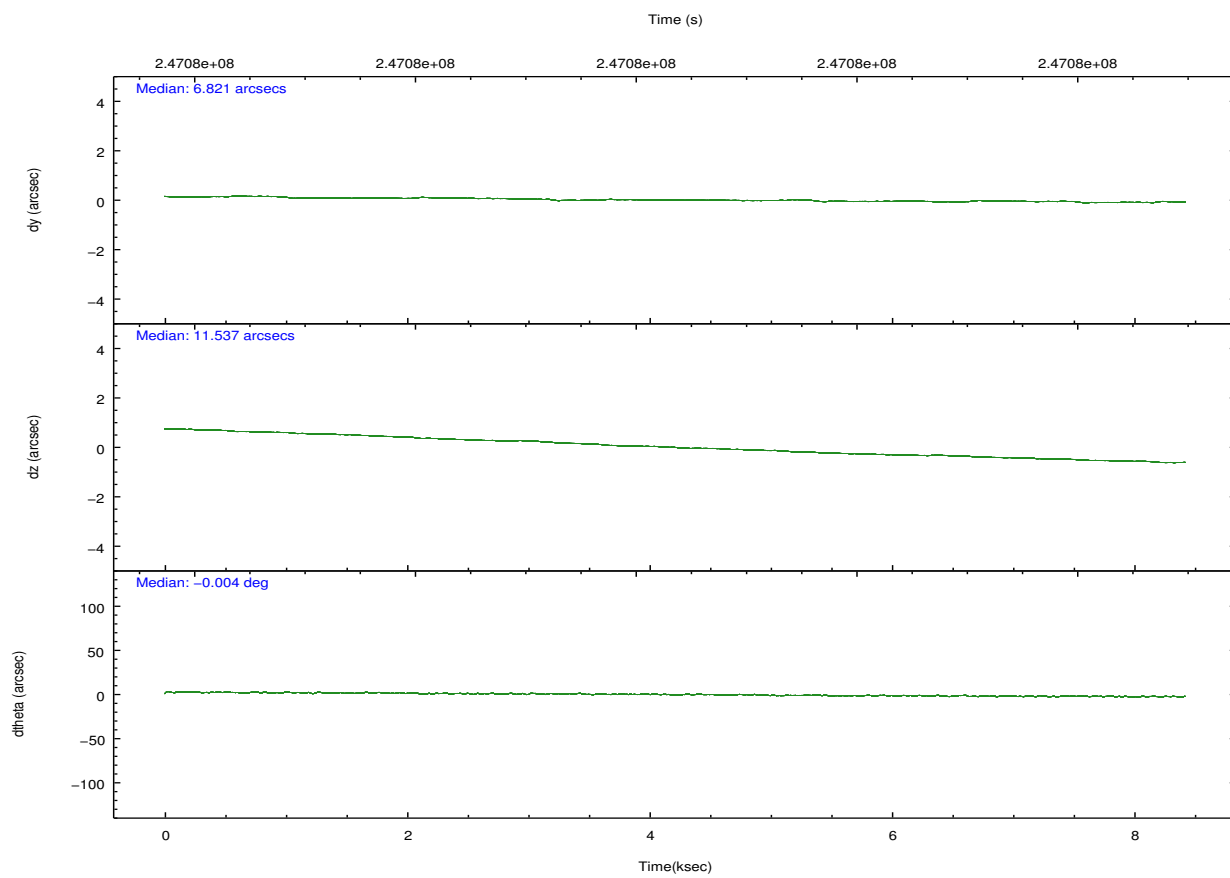
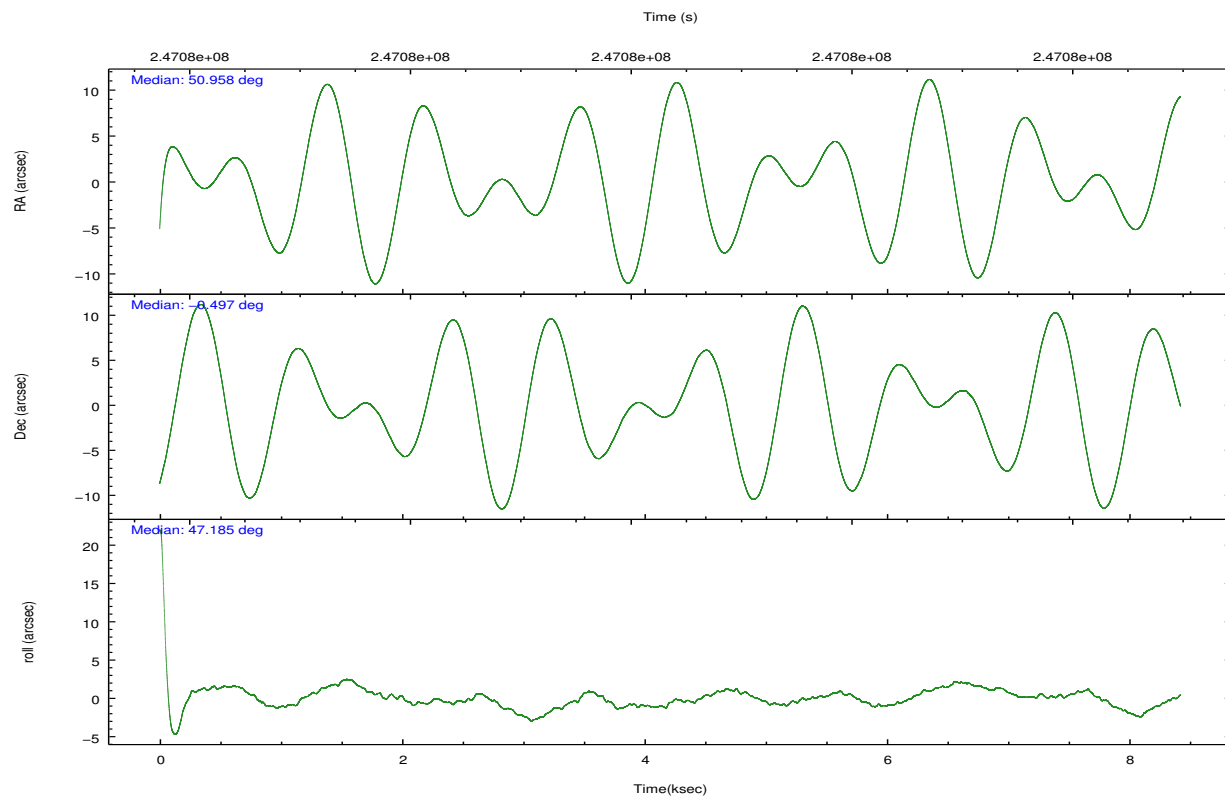
	ccd 2	ccd 3	ccd 6	ccd 7
grade 0 events	2059	2144	2116	2812
	3%	3%	3%	4%
grade 1 events	29	30	25	65
	0%	0%	0%	0%
grade 2 events	1247	1230	1348	6154
	2%	2%	2%	9%
grade 3 events	613	661	636	2833
	1%	1%	1%	4%
grade 4 events	611	641	680	2976
	1%	1%	1%	4%
grade 5 events	1902	2331	2515	7102
	3%	3%	4%	10%
grade 6 events	963	1069	1307	15856
	1%	1%	2%	23%
grade 7 events	53439	51186	49988	29144
	87%	86%	85%	43%



## 2.2 Compared Parameters

Parameter	Planned	Actual	Parameter	Planned	Actual
Instrument	ACIS	ACIS	Obspar format version number	7	7
Detector	ACIS-2367	ACIS-2367	Obspar file type	PREDICTED	ACTUAL
Grating	NONE	NONE	Obspar update status	NONE	UPDATED
Data mode	VFAINT	VFAINT	Number of optional ACIS chips dropped	0	0
Observation mode	POINTING	POINTING	On-chip summing requested	N	N
[deg] Pointing RA	50.952648	50.9583348282534	Subarray requested	NONE	NONE
[deg] Pointing Dec	-0.524001	-0.497286247426405	Alternating exposures requested	N	N
[deg] Pointing Roll	47.036702	47.19341999070996	[s] Primary exposure time	0.000000	3.1
[mm] SIM focus pos	-0.684267	-0.6828225247311905			
[mm] SIM defocus	0	0.001444936568705701			
[mm] SIM translation stage pos	-190.132523	-190.1400660498719			
[mm] SIM translation stage offset	0	0.00754346686406393			
[s] Observation start time (MET)	247076260.184000	247074959.01703			
Observation start date	2005-10-30T16:16:36	2005-10-30T15:55:59			
[s] Observation end time (MET)	247084560.184000	247084699.59248			
Observation end date	2005-10-30T18:34:56	2005-10-30T18:38:19			
Read mode	TIMED	TIMED			

## 2.3 Aspect

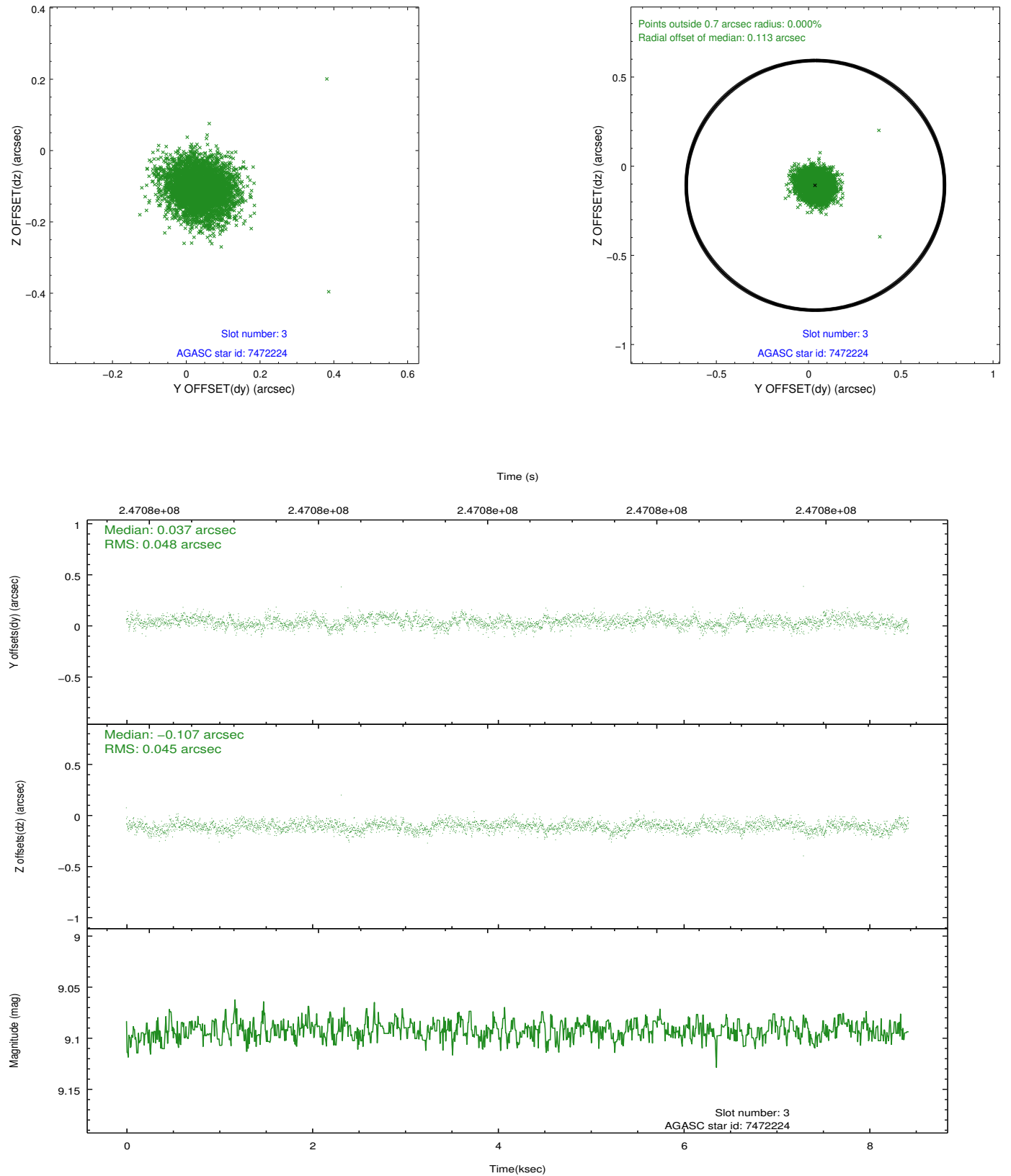


### Slot Statistics

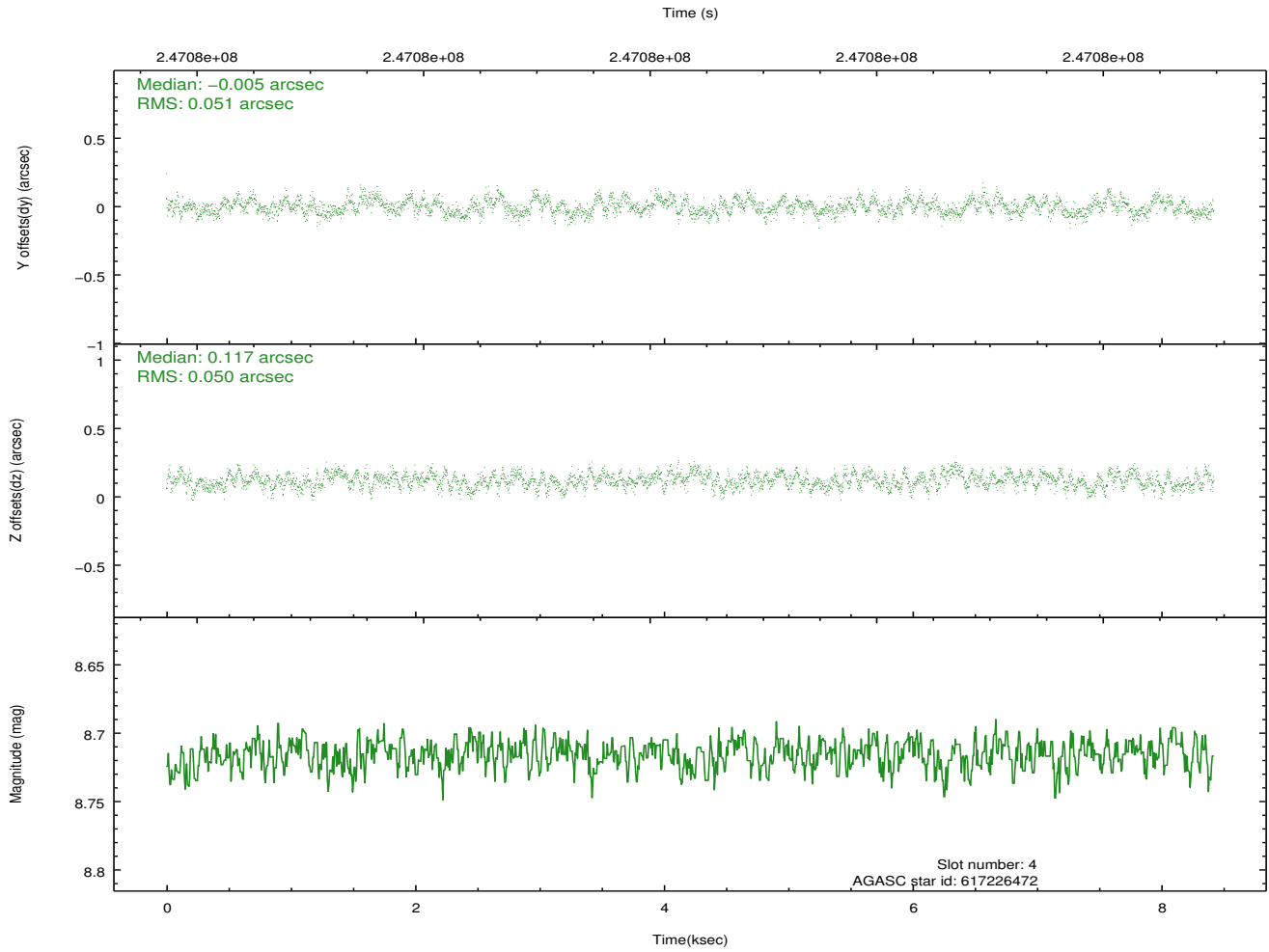
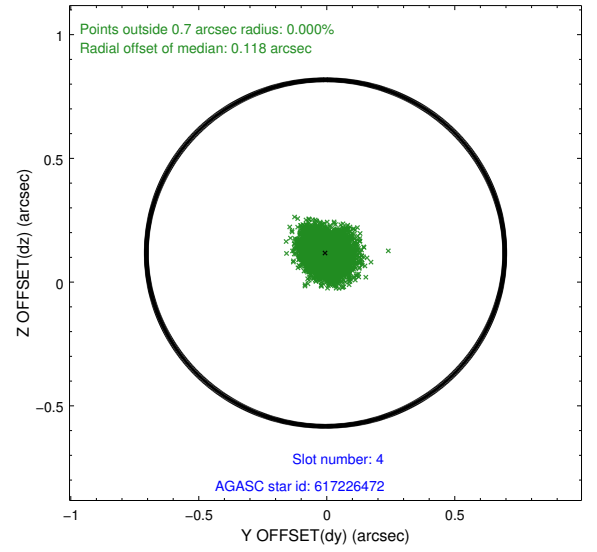
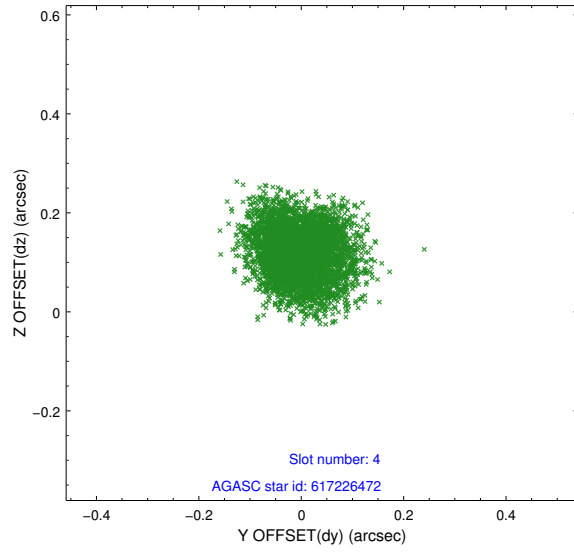
slot	status	id	mag	n_pts	med_dy	med_dz	dr1	dr2	ra	dec	mean_y	mean_z
0	FID	ACIS-S-2	7.10	2055	-0.041	-0.022	0.016	0.024	0.000000	0.000000	-759.61	-1732.88
1	FID	ACIS-S-4	7.20	2055	0.077	0.025	0.009	0.016	0.000000	0.000000	2153.47	174.99
2	FID	ACIS-S-5	7.23	2055	-0.068	0.004	0.014	0.022	0.000000	0.000000	-1811.65	169.36
3	GUIDE	7472224	9.09	4109	0.037	-0.107	0.069	0.112	50.954093	0.013958	1420.73	1316.01
4	GUIDE	617226472	8.72	4109	-0.005	0.117	0.078	0.122	51.517896	-0.643841	1071.78	-1782.46
5	GUIDE	617227784	9.11	4103	-0.116	0.117	0.082	0.135	51.447692	-0.728205	676.98	-1805.47
6	GUIDE	7472568	9.19	4091	0.013	0.051	0.118	0.187	51.063140	0.244649	2295.90	1594.16
7	GUIDE	617222168	8.07	4109	0.064	-0.188	0.055	0.087	50.285317	-0.369555	-1230.22	2136.81

## 2.4 Star Slots

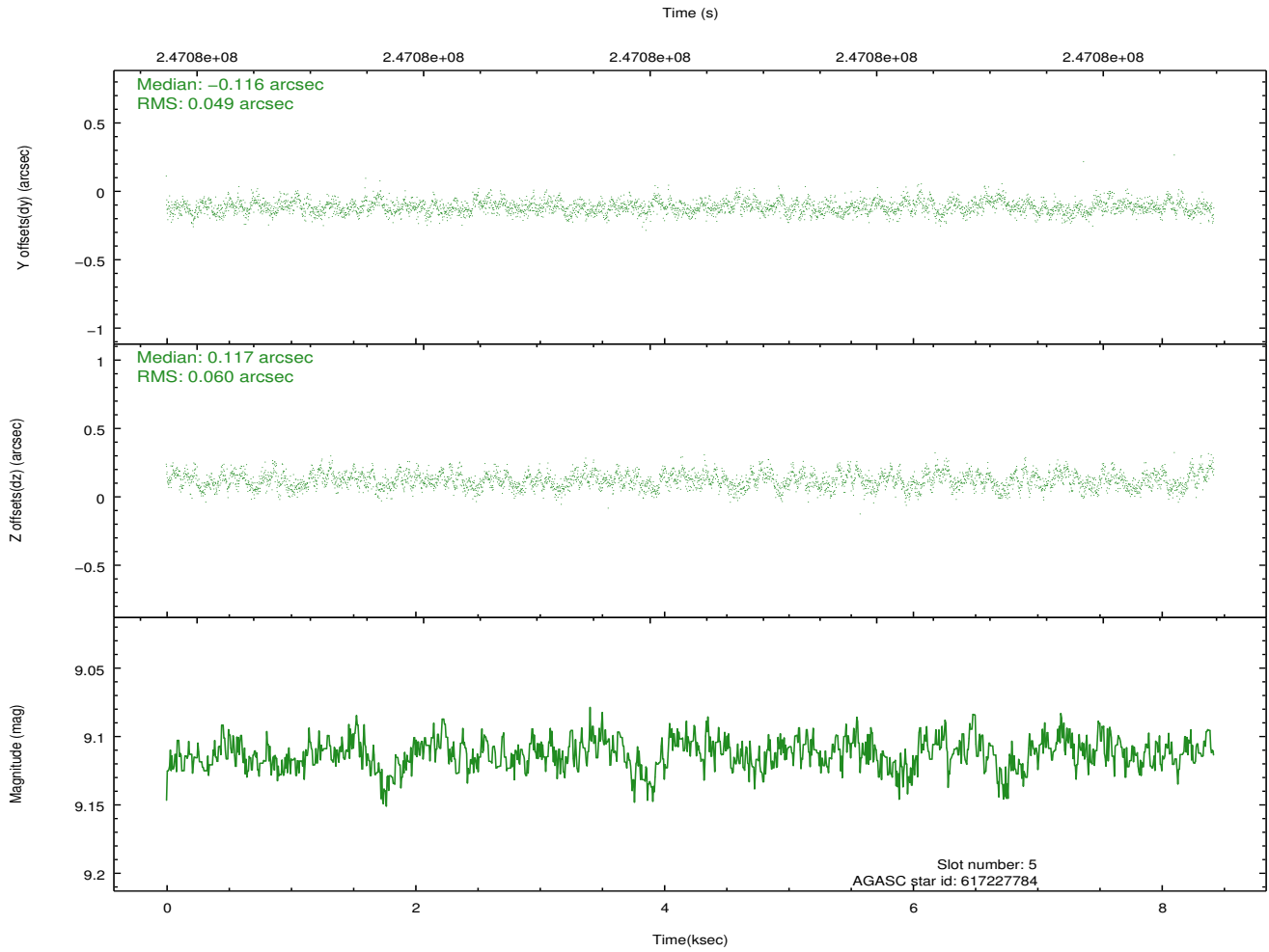
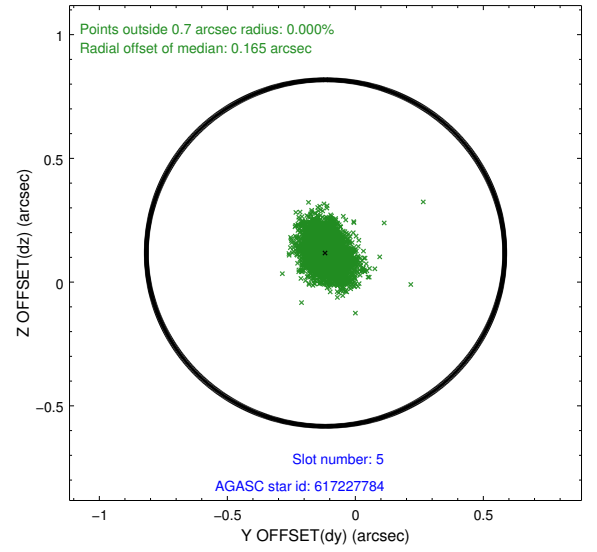
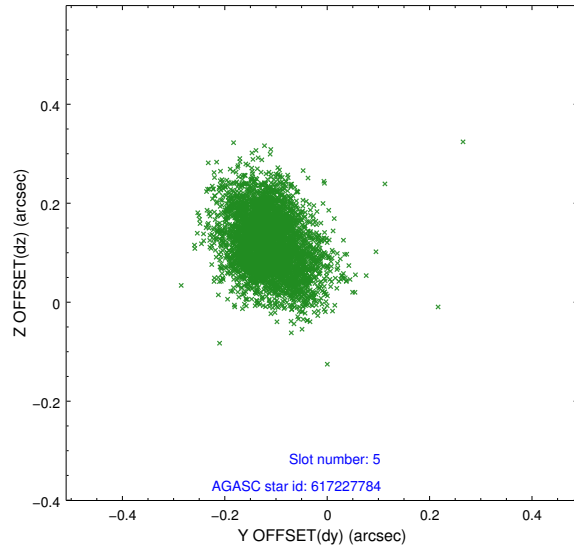
### 2.4.1 Slot 3



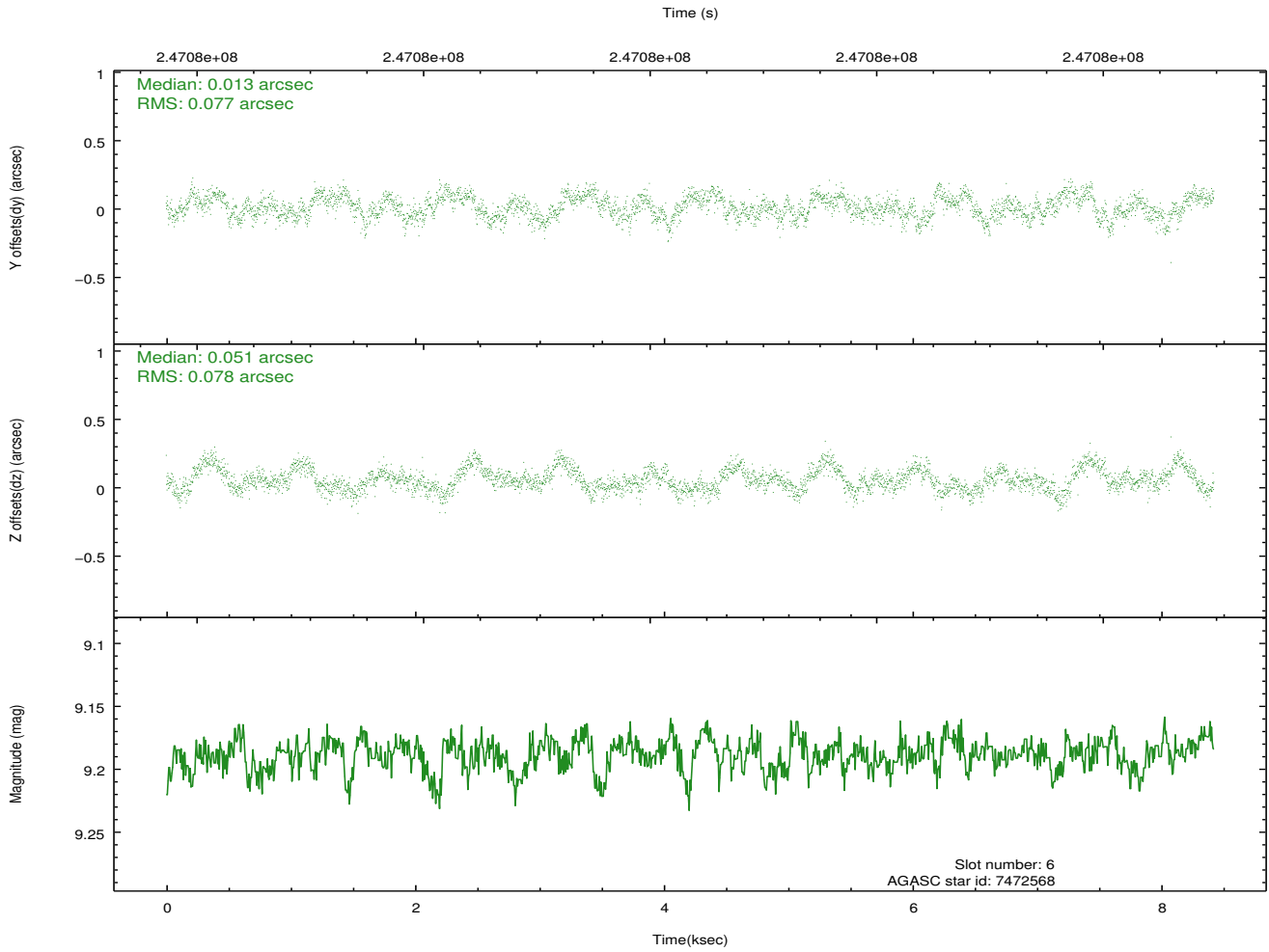
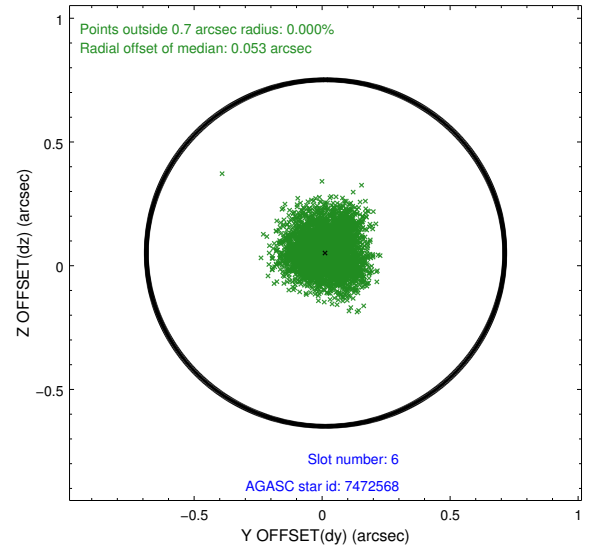
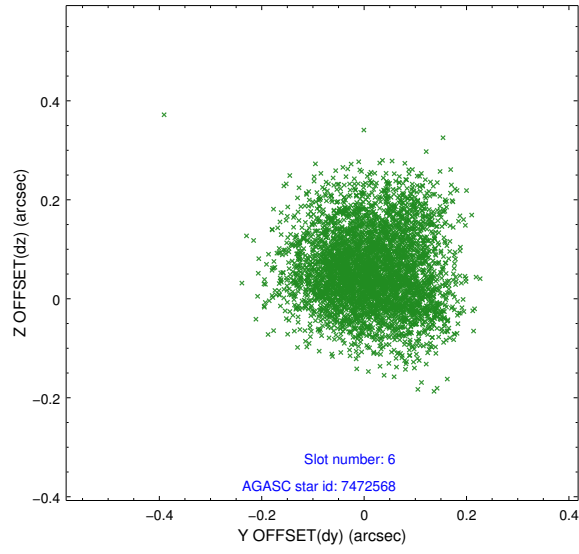
## 2.4.2 Slot 4



### 2.4.3 Slot 5

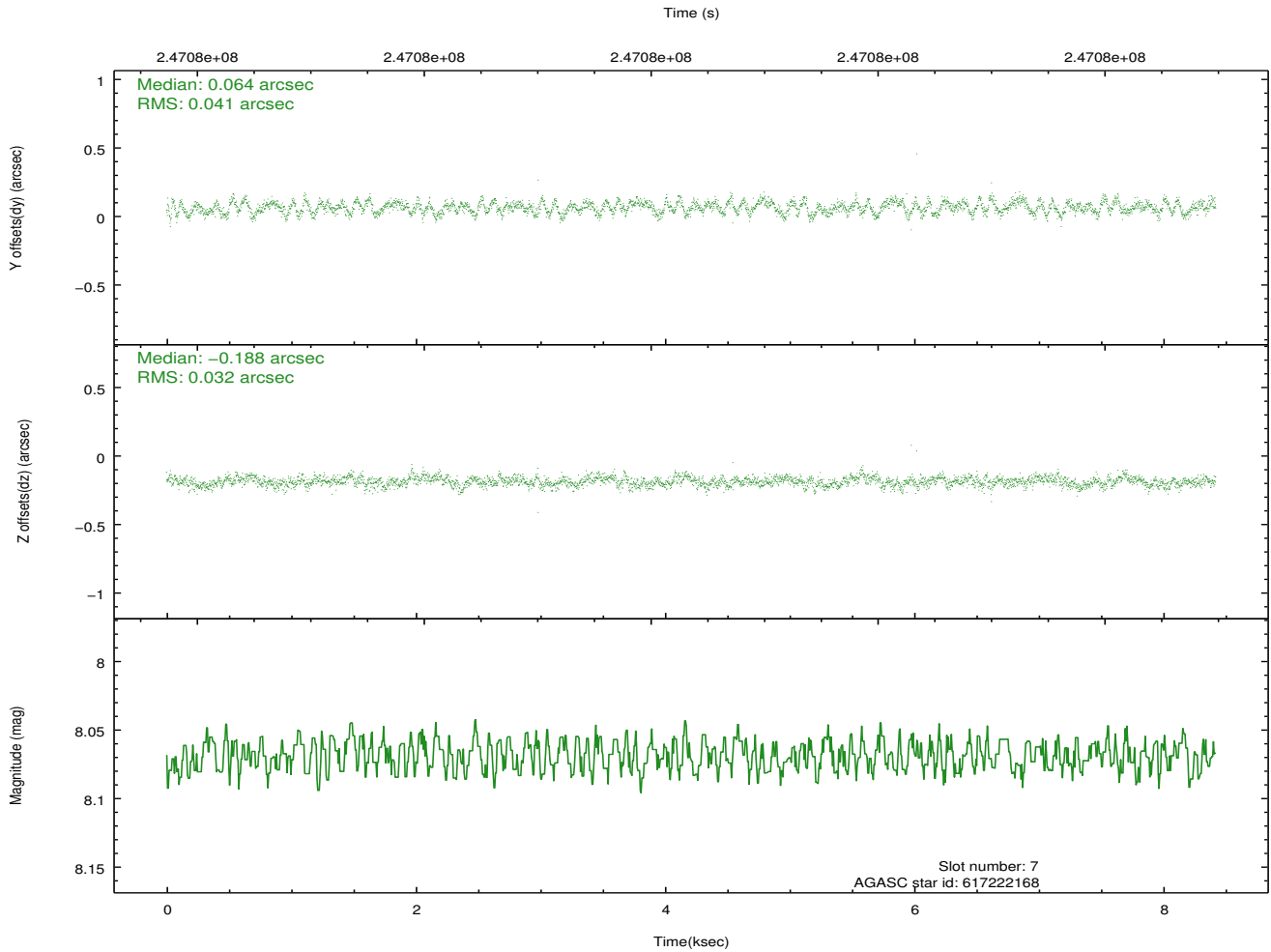
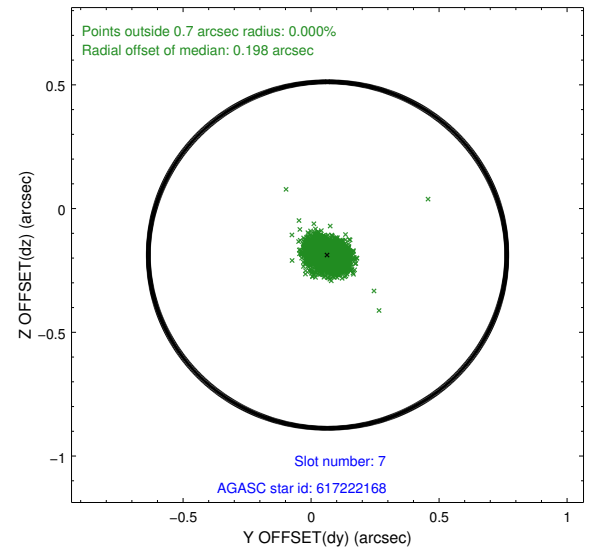
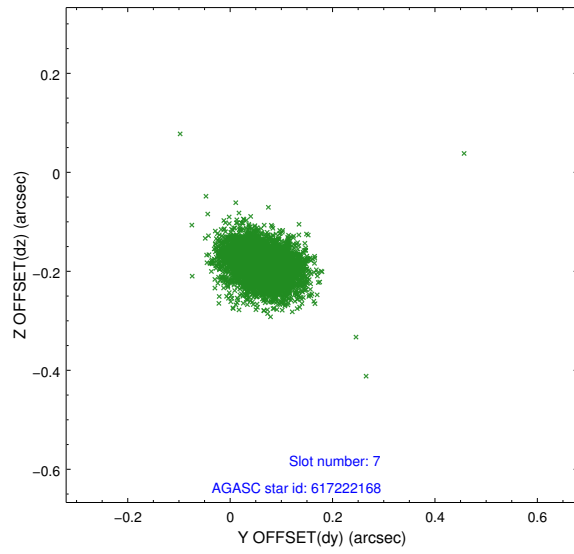


## 2.4.4 Slot 6



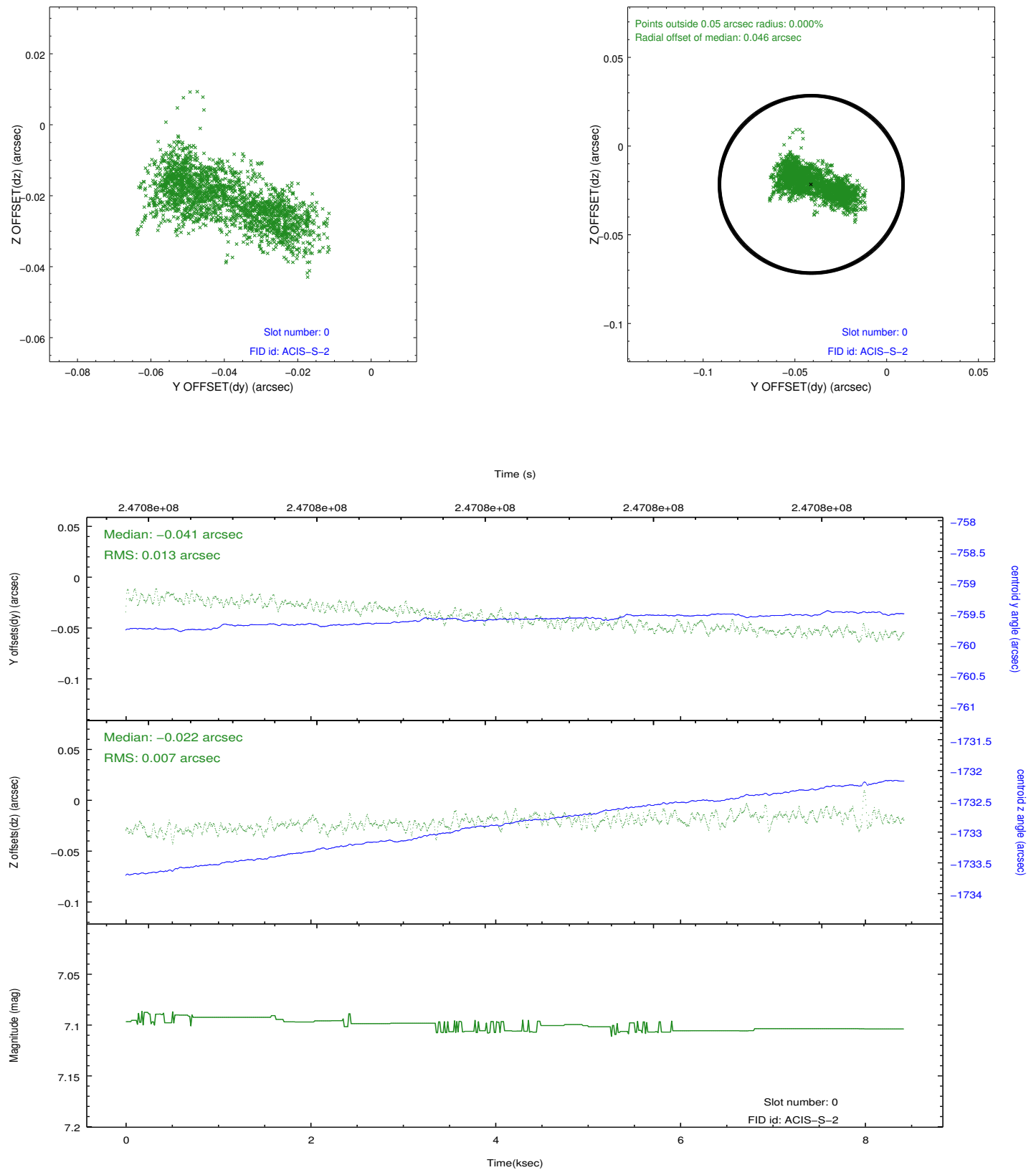


## 2.4.5 Slot 7

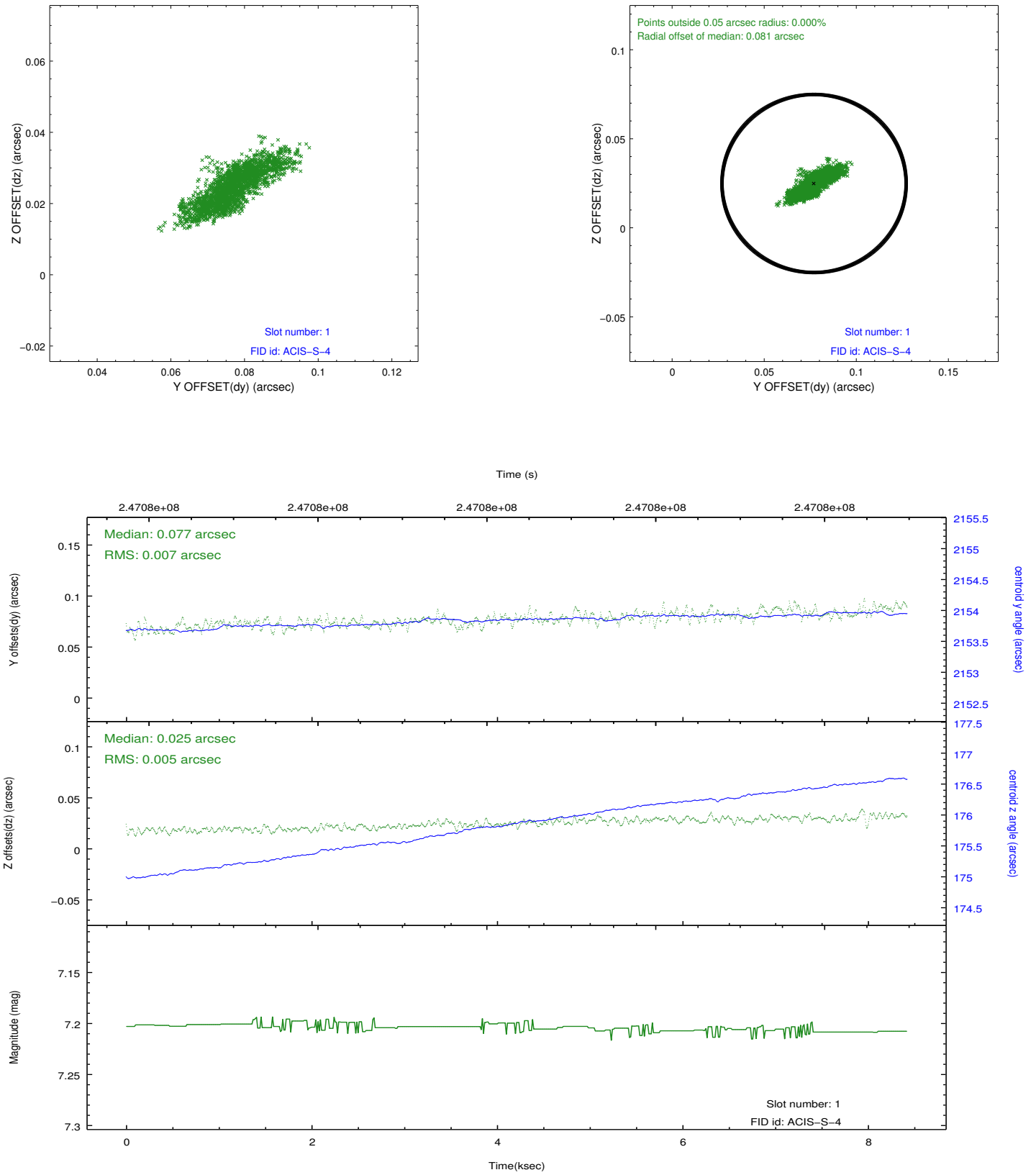


## 2.5 FID Slots

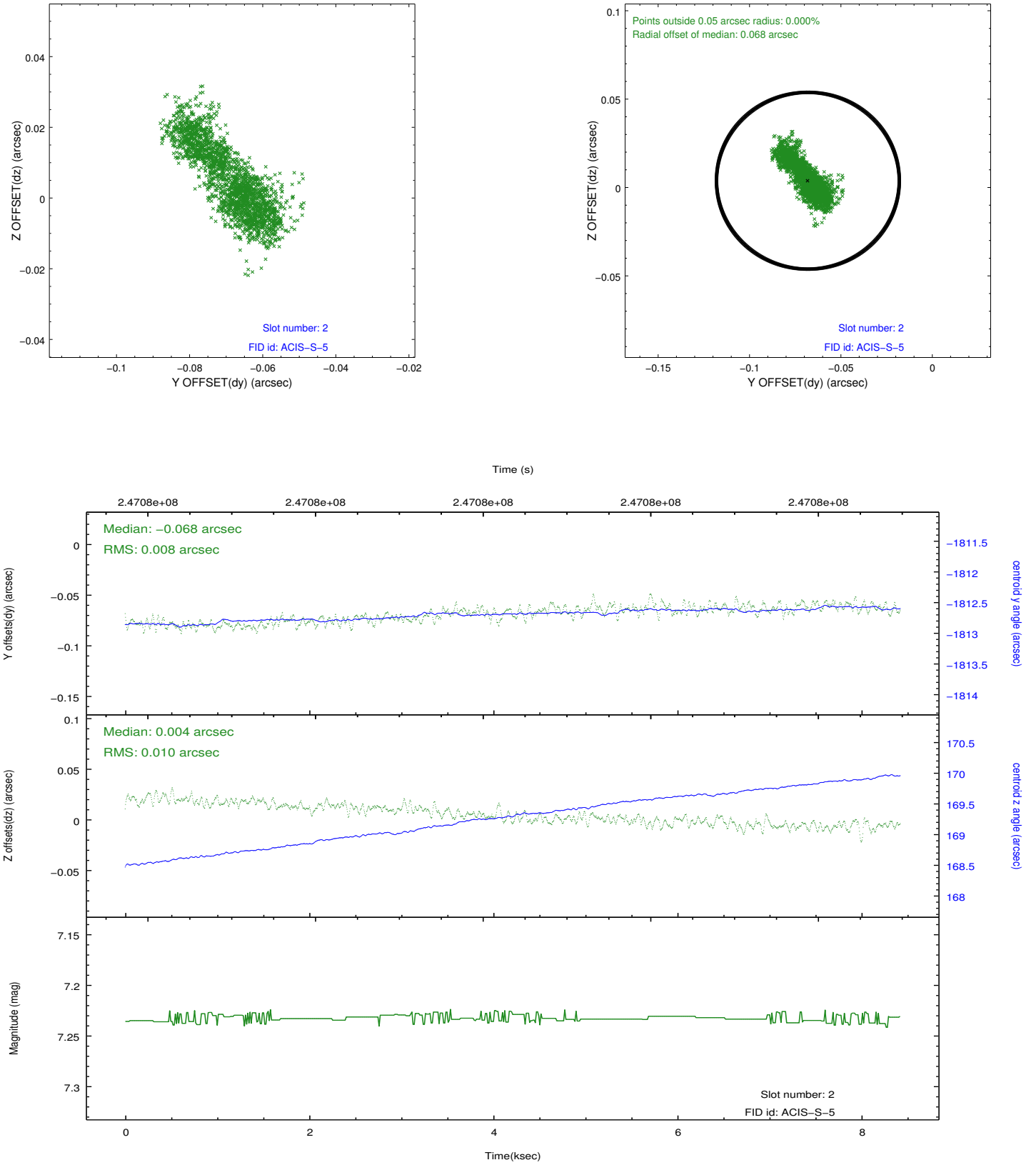
### 2.5.1 Slot 0



## 2.5.2 Slot 1



### 2.5.3 Slot 2



## A Summary

### A.1 Status

V&V Scientist	Beth Sundheim
V&V Date (YYYY-MM-DD)	2013.01.27
V&V Edition	1
V&V Disposition and Status	OK
V&V Charge Time	8.416499

### A.2 Comments