

V&V Reference Report

L2 ASCDS Version : 7.6.7

Observation 5639 - L2 Version 002
Chandra X-Ray Center

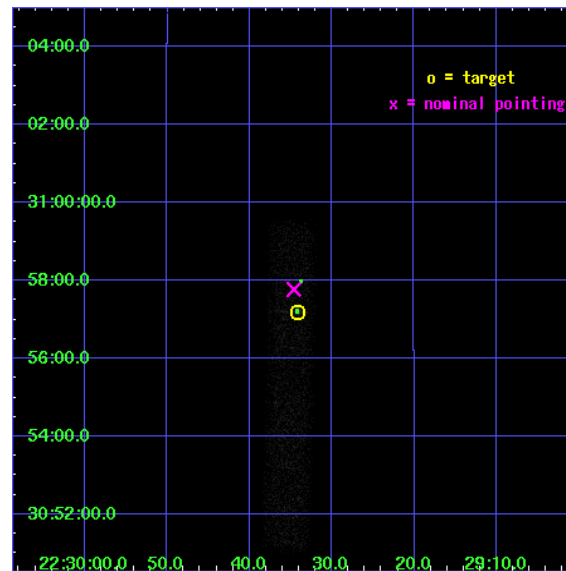
L2 Processing Date: Mar 3 2006

Contents

1	Front	2
2	OBI	3
2.1	OBI	3
2.1.1	Images	3
2.1.2	Bias	3
2.1.3	Parameters	4
2.1.4	Events	4
2.2	Compared Parameters	5
2.3	Aspect	6
2.4	Star Slots	9
2.4.1	Slot 3	9
2.4.2	Slot 4	10
2.4.3	Slot 5	11
2.4.4	Slot 6	12
2.4.5	Slot 7	13
2.5	FID Slots	14
2.5.1	Slot 0	14
2.5.2	Slot 1	15
2.5.3	Slot 2	16
3	Point Sources	17
A	Summary	18
A.1	Status	18
A.2	Comments	18

1 Front

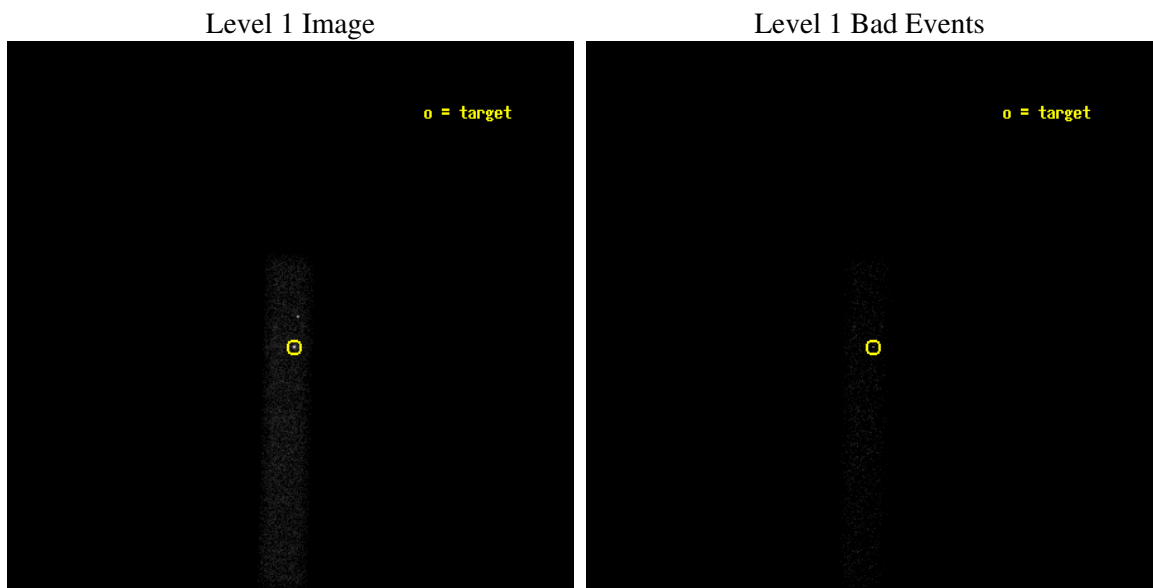
seq_num	701062
obs_id	5639
title	The Extended X-ray Structure of a New Population of Blazars
observer	Dr. Hermine Landt
object	RGBJ2229+3057
dtcycle	0
cycle	P
ra_targ	337.3925
dec_targ	30.953361
ra_nom	337.39426465622
dec_nom	30.962873086329
roll_nom	91.315320121749
revision	2
ontime	10183.200151742
livetime	9235.6250242532
ontime7	10183.200151742
l2events	10217



2 OBI

2.1 OBI

2.1.1 Images



2.1.2 Bias

Chip 7



2.1.3 Parameters

obi_num	0
ascdsver	7.6.7
caldbver	3.2.1
date	2006-03-03T06:12:19
revision	2

sched_exp_time	10000.000000
ontime	10628.493533969
ontime7	10628.493533969
l1events	19343

2.1.4 Events

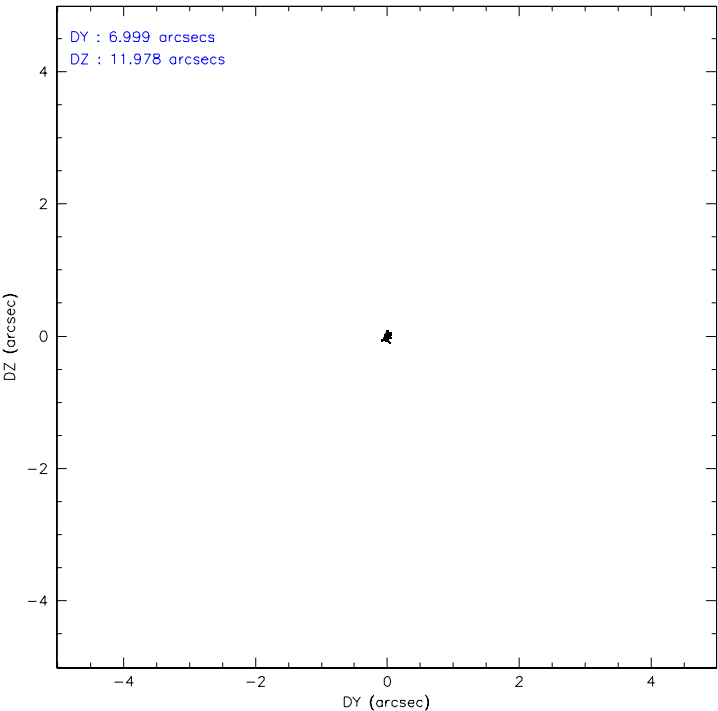
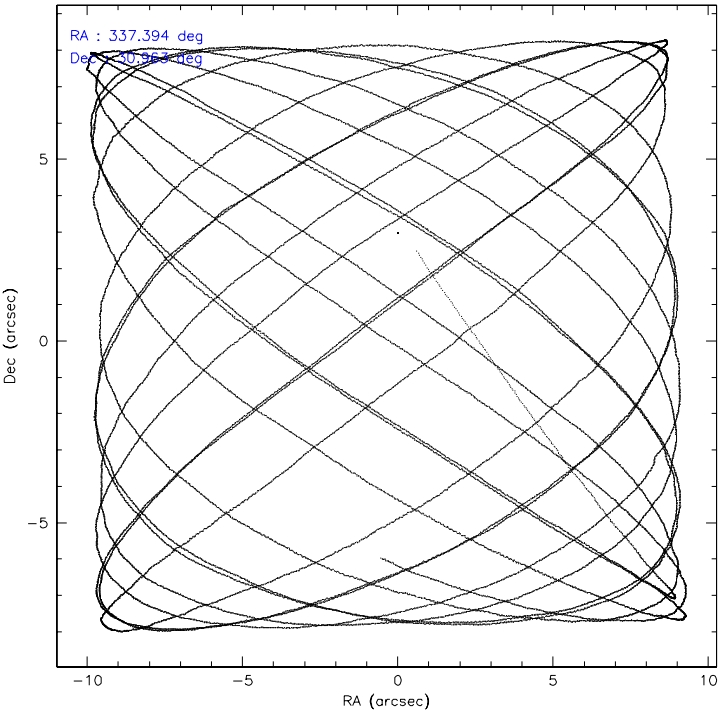
	ccd 7
level 1 events	19343
rejected events	8848
rejected %	45%

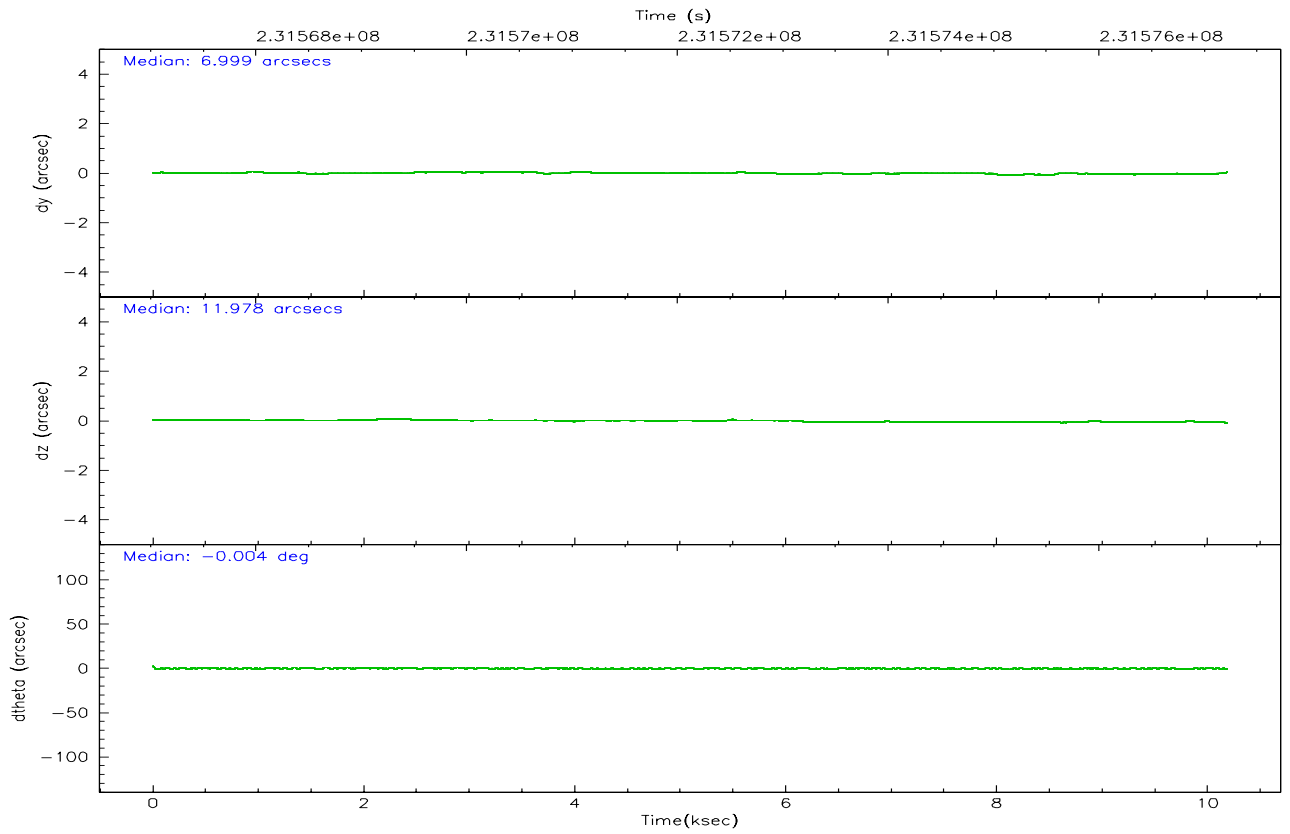
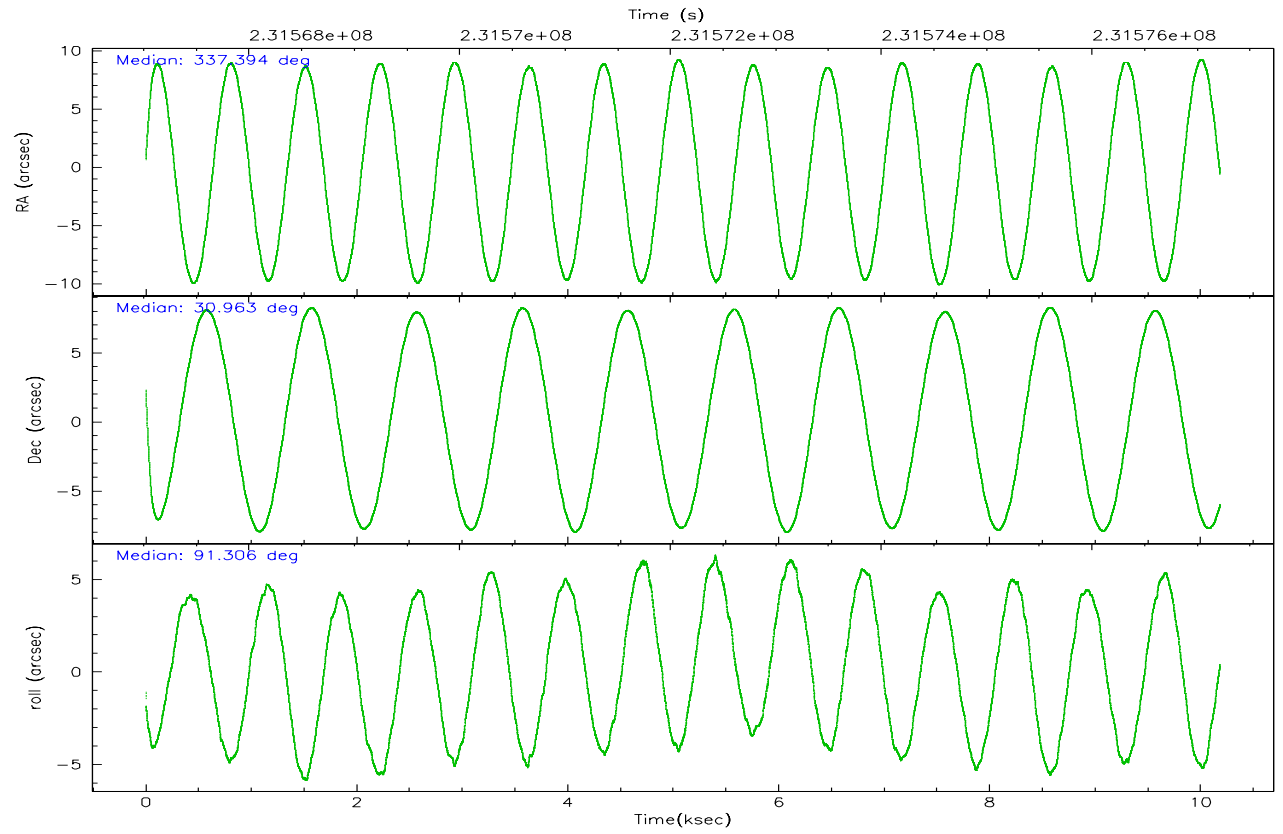
	ccd 7
grade 0 events	1865
	9%
grade 1 events	36
	0%
grade 2 events	2598
	13%
grade 3 events	1250
	6%
grade 4 events	1139
	5%
grade 5 events	1166
	6%
grade 6 events	3983
	20%
grade 7 events	7306
	37%

2.2 Compared Parameters

Parameter	Planned	Actual	Parameter	Planned	Actual
Instrument	ACIS	ACIS	Obspar format version number	6	6
Detector	ACIS-7	ACIS-7	Obspar file type	PREDICTED	ACTUAL
Grating	NONE	NONE	Obspar update status	NONE	UPDATED
Data mode	FAINT	FAINT	On-chip summing requested	N	N
Observation mode	POINTING	POINTING	Subarray requested	1/8	1/8
Pointing RA	337.411087	337.3942646562241	Subarray start row	0	449
Pointing Dec	30.939849	30.96287308632915	Subarray row count	1024	128
Pointing Roll	91.150054	91.31532012174901	Alternating exposures requested	N	N
SIM focus pos (mm)	-0.684267	-0.6828225247311905	Primary exposure time	0.000000	0.4
SIM defocus (mm)	0	0.001444936568705701			
SIM translation stage pos (mm)	-190.132523	-190.1400660498719			
SIM translation stage offset (mm)	0	0.00754346686406393			
Observation start time	231567209.184000	231566364.93156			
Observation start date	2005-05-04T04:12:25	2005-05-04T03:59:24			
Observation end time	231577209.184000	231577511.80707			
Observation end date	2005-05-04T06:59:05	2005-05-04T07:05:11			
Read mode	TIMED	TIMED			

2.3 Aspect



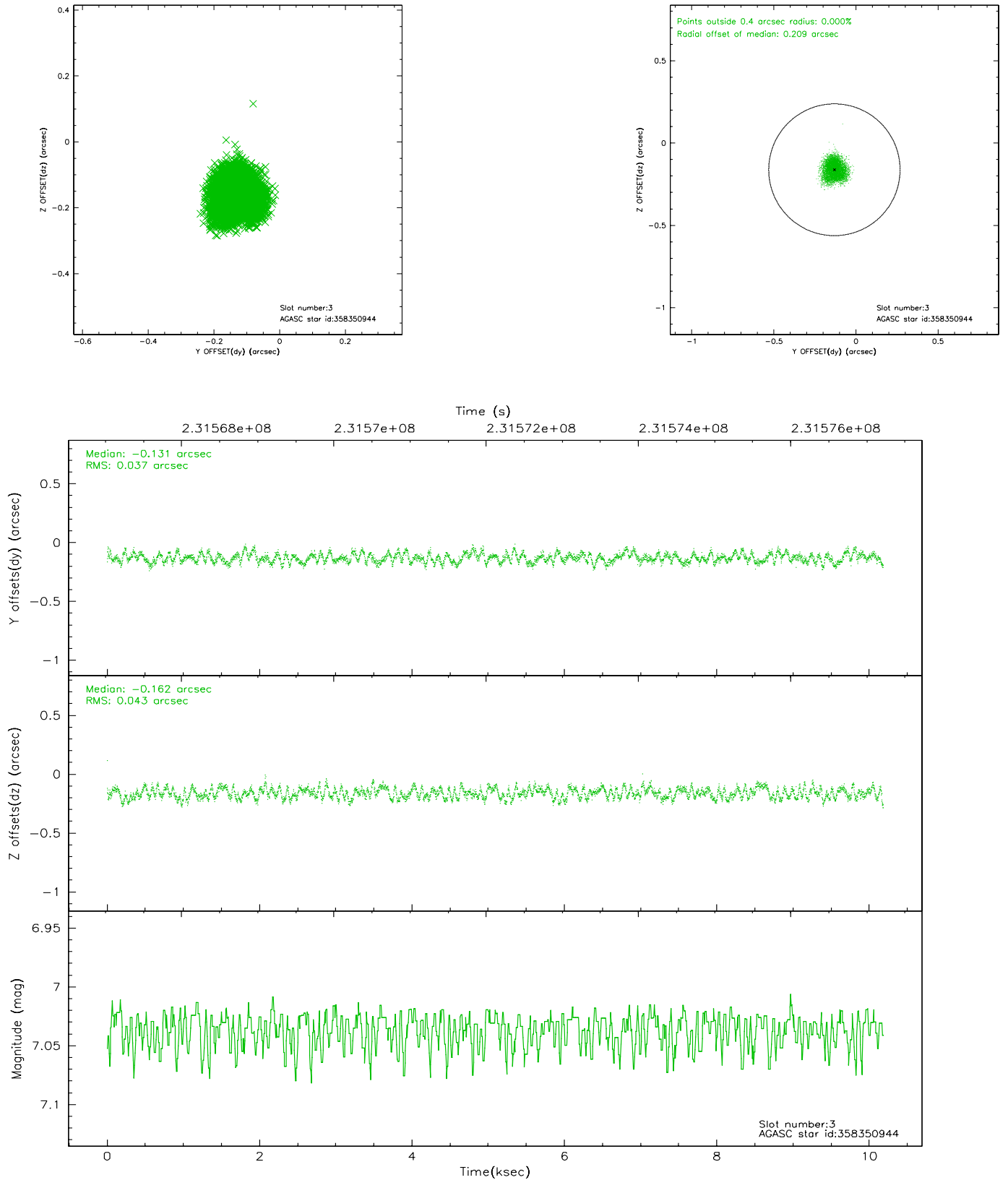


Slot Statistics

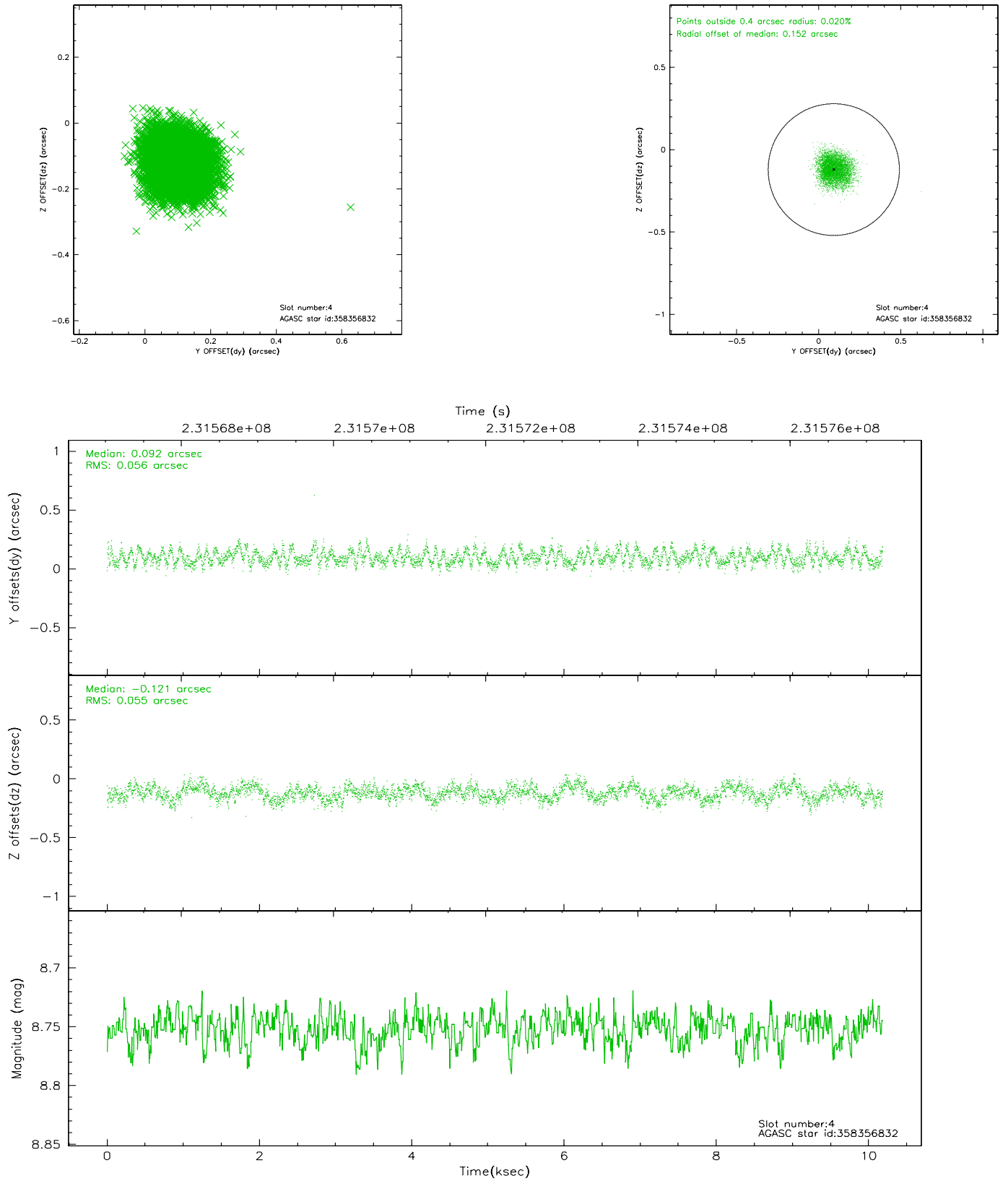
slot	status	id	mag	n_pts	med_dy	med_dz	dr1	dr2	ra	dec	mean_y	mean_z
0	FID	ACIS-S-2	7.10	2484	-0.016	-0.004	0.007	0.011	0.000000	0.000000	-759.77	-1733.28
1	FID	ACIS-S-4	7.20	2484	0.020	0.009	0.005	0.009	0.000000	0.000000	2153.31	174.68
2	FID	ACIS-S-5	7.23	2482	-0.035	0.004	0.006	0.011	0.000000	0.000000	-1811.96	168.94
3	GUIDE	358350944	7.04	4969	-0.131	-0.162	0.062	0.093	336.753763	30.956879	107.65	2027.78
4	GUIDE	358356832	8.75	4969	0.092	-0.121	0.085	0.131	336.721642	30.516179	-1475.47	2168.69
5	GUIDE	358365584	8.15	4968	0.072	-0.131	0.063	0.100	336.778508	30.734272	-695.53	1972.09
6	GUIDE	358484992	8.73	4968	0.003	0.245	0.070	0.114	337.895645	30.575890	-1336.60	-1474.59
7	GUIDE	358494392	7.03	4967	-0.037	0.167	0.070	0.109	337.534935	31.215786	985.63	-400.73

2.4 Star Slots

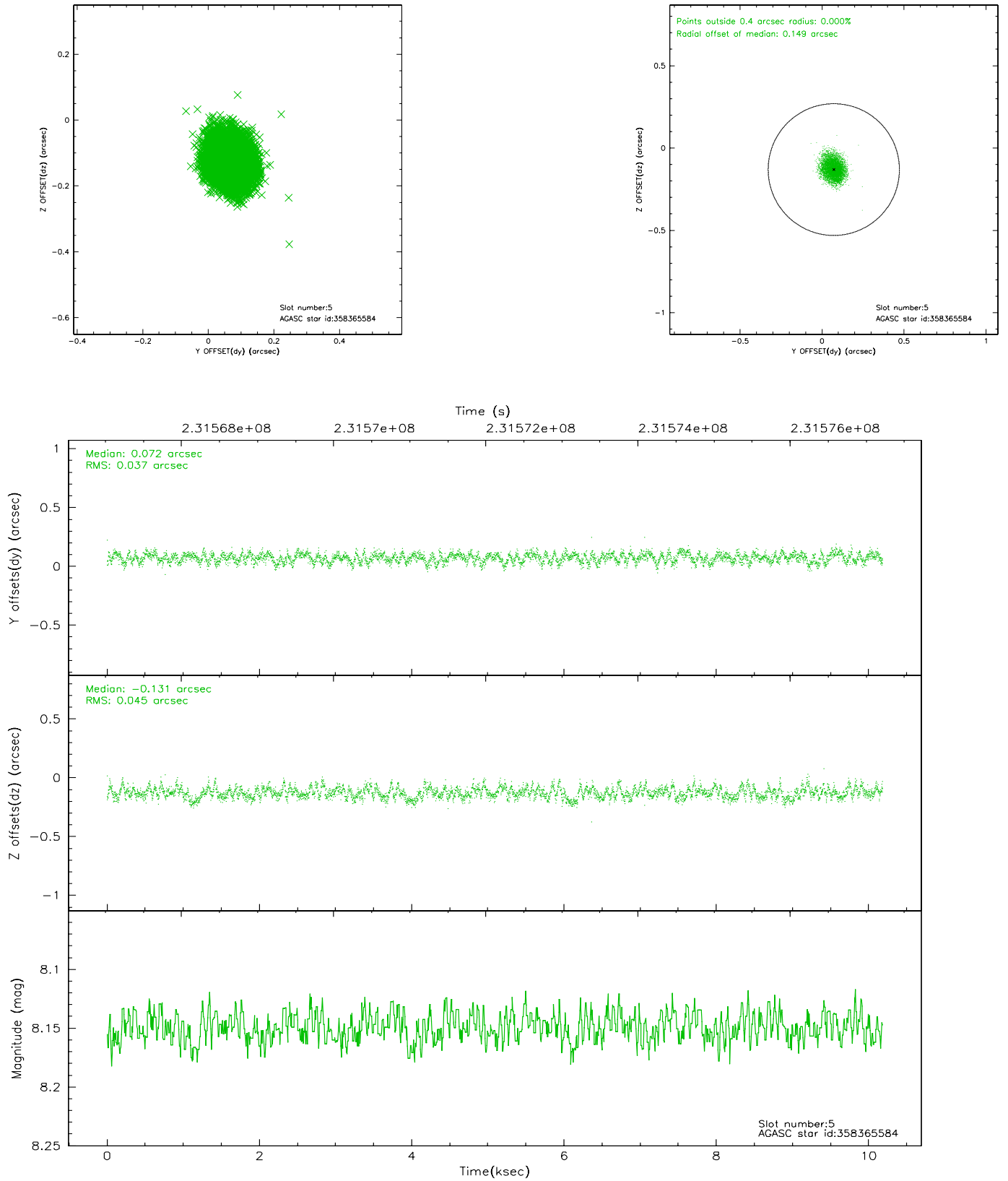
2.4.1 Slot 3



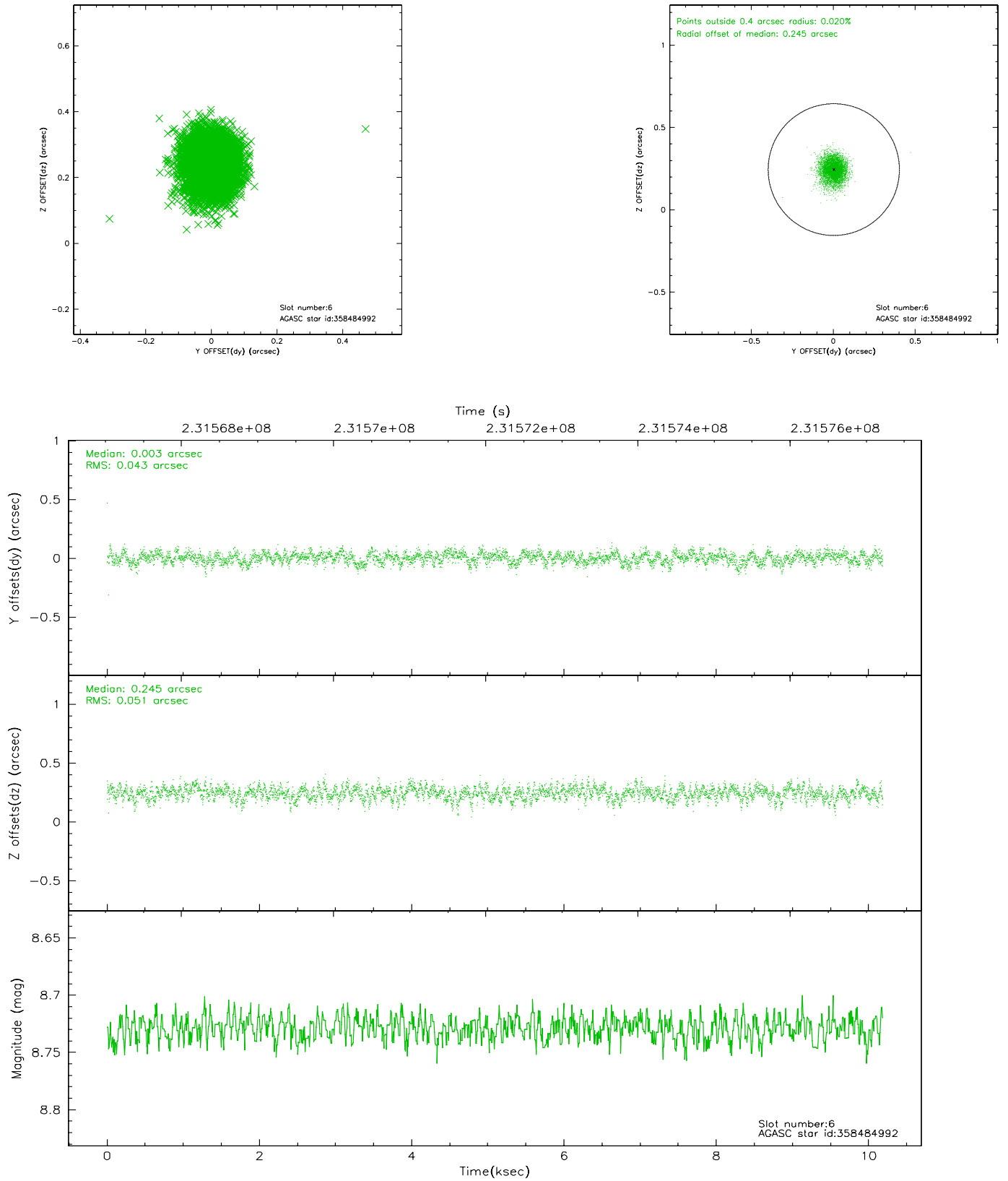
2.4.2 Slot 4



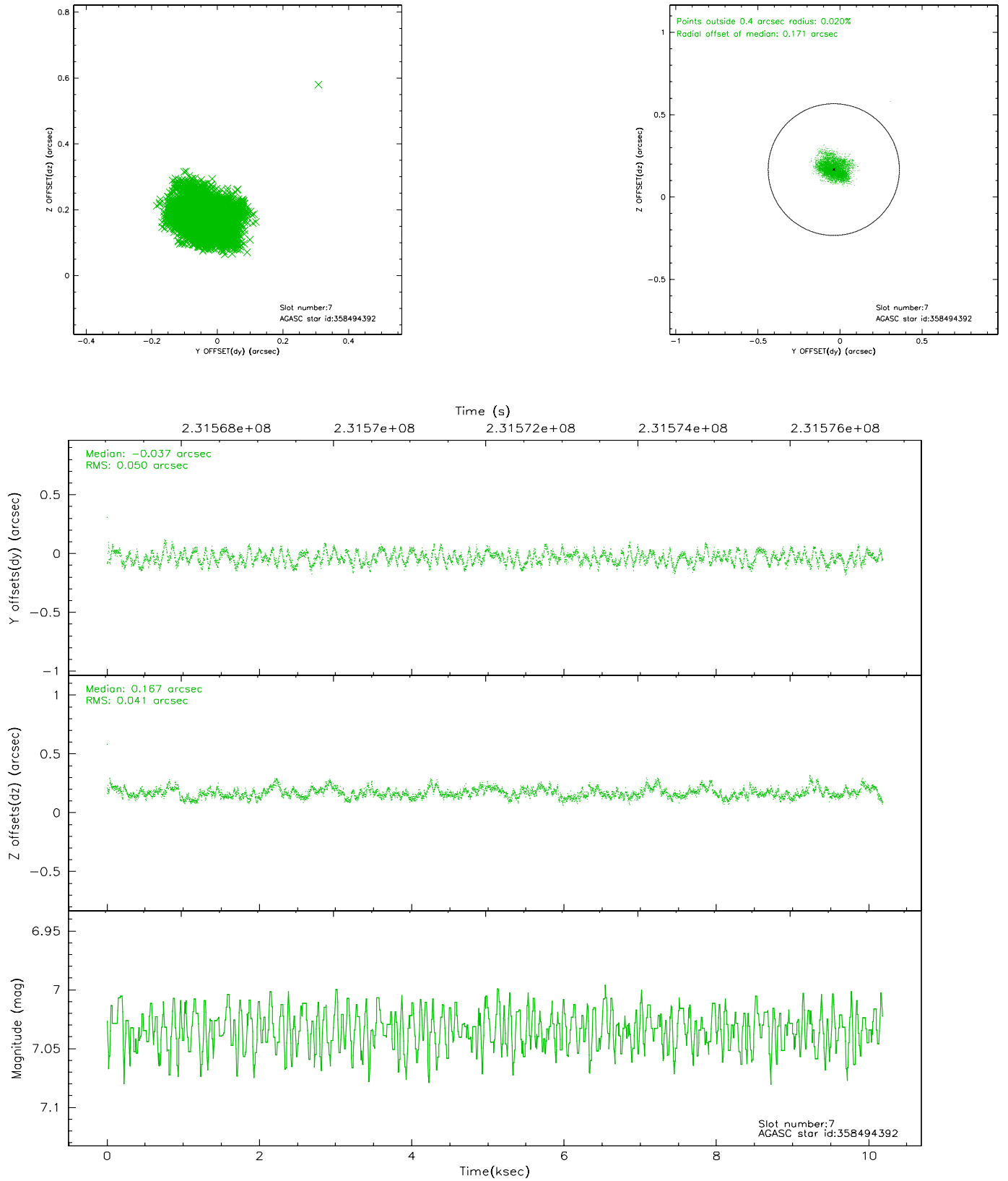
2.4.3 Slot 5



2.4.4 Slot 6

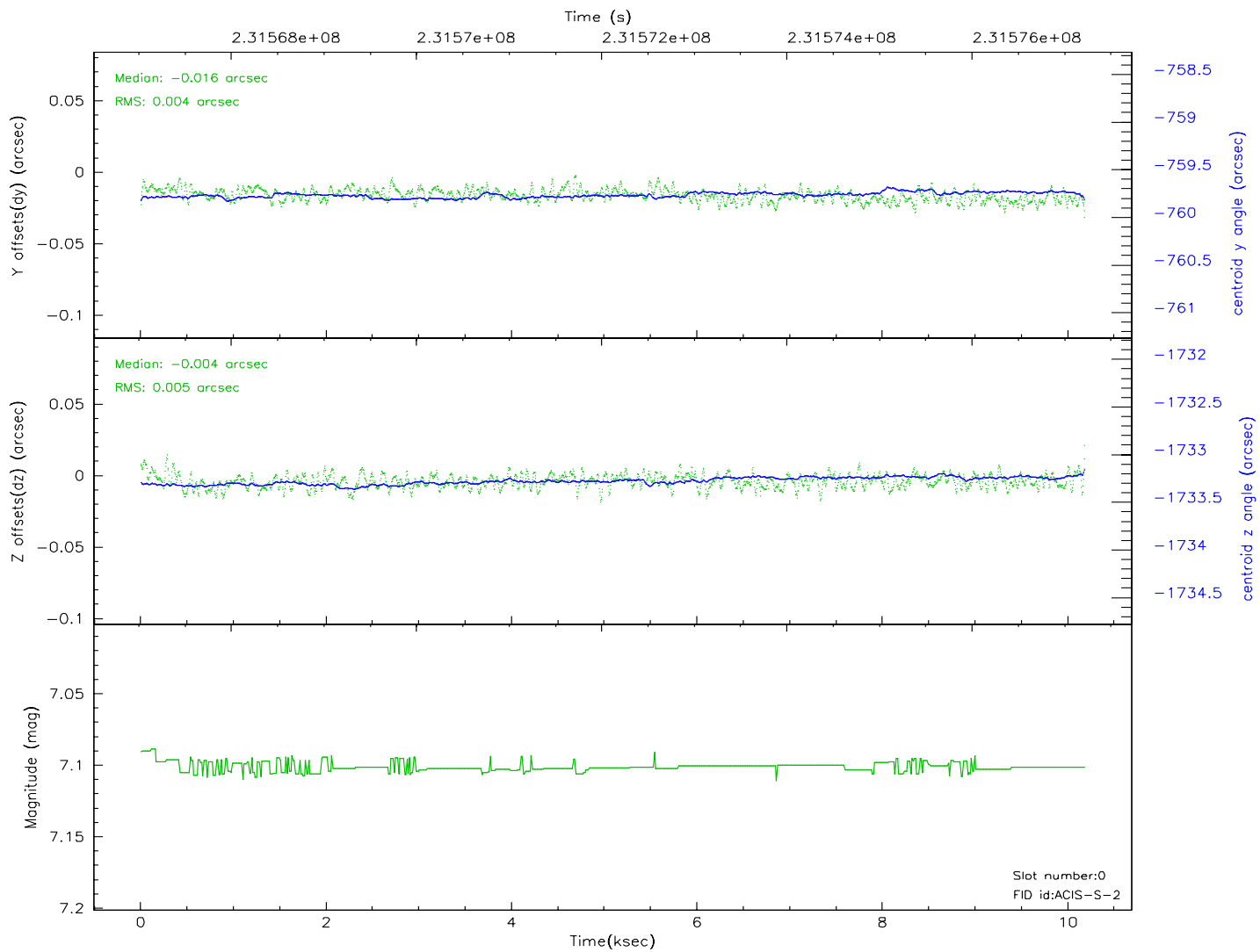
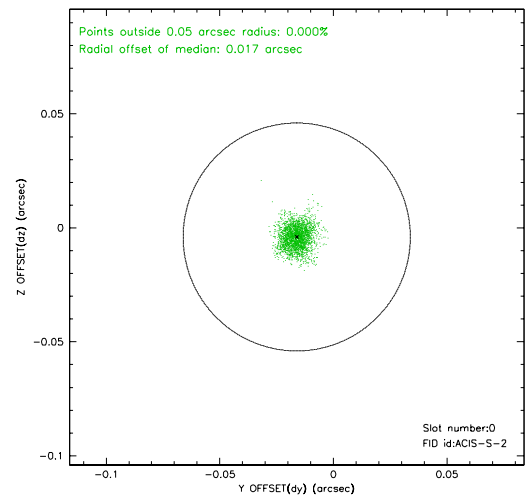
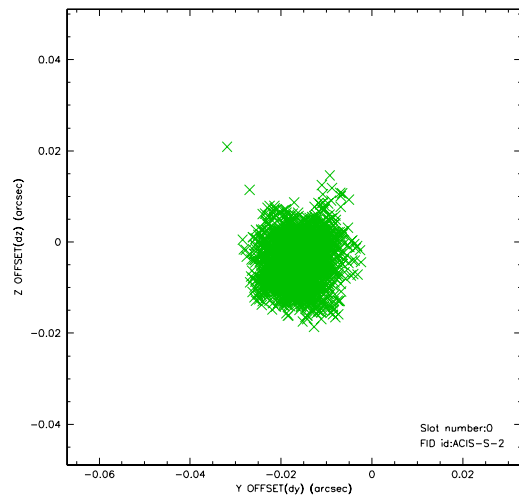


2.4.5 Slot 7

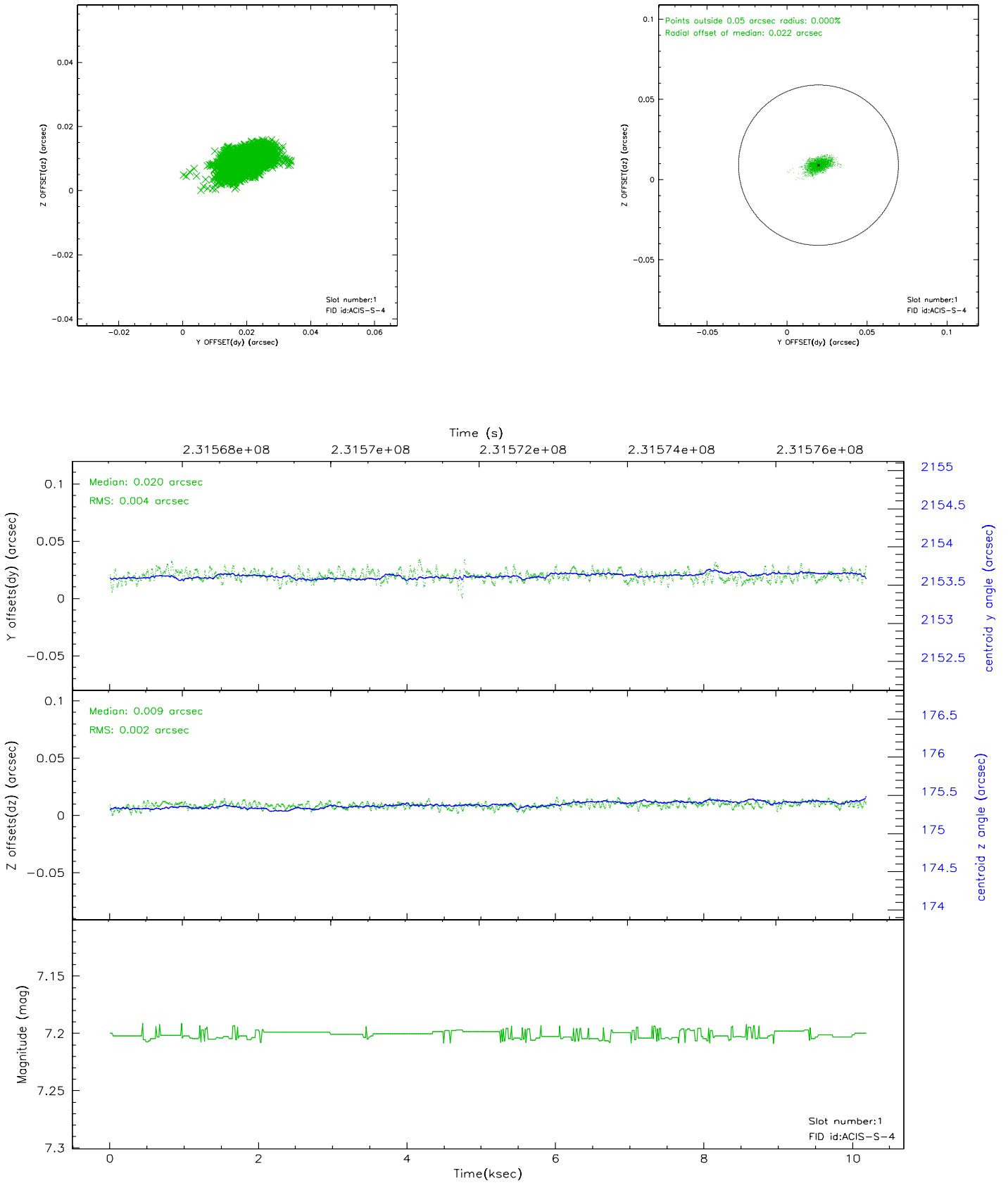


2.5 FID Slots

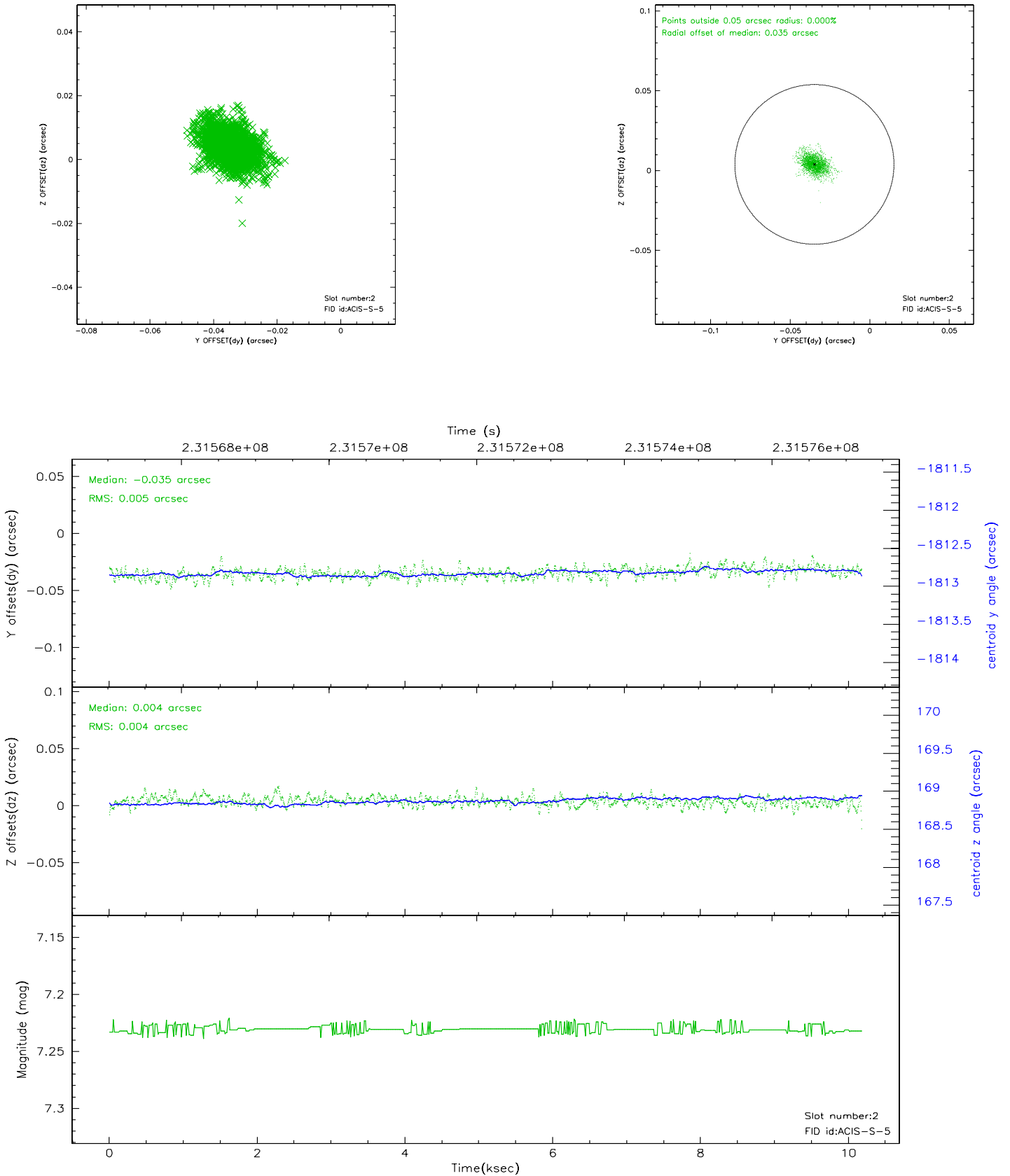
2.5.1 Slot 0



2.5.2 Slot 1



2.5.3 Slot 2



3 Point Sources

A Summary

A.1 Status

V&V Scientist	Beth Sundheim
V&V Date (YYYY-MM-DD)	2006.03.03
V&V Edition	1
V&V Disposition and Status	OK
V&V Charge Time	10.1832

A.2 Comments