

V&V Reference Report

L2 ASCDS Version : 8.5.1.1

Observation 5635 - L2 Version 3
Chandra X-Ray Center

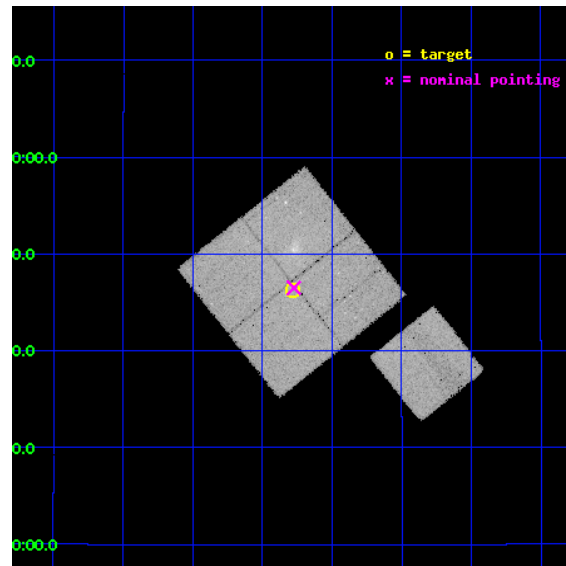
L2 Processing Date : Dec 26 2012

Contents

1	Front	2
2	OBI	3
2.1	OBI	3
2.1.1	Images	3
2.1.2	Bias	3
2.1.3	Parameters	4
2.1.4	Events	4
2.2	Compared Parameters	5
2.3	Aspect	6
2.4	Star Slots	9
2.4.1	Slot 3	9
2.4.2	Slot 4	10
2.4.3	Slot 5	11
2.4.4	Slot 6	12
2.4.5	Slot 7	13
2.5	FID Slots	14
2.5.1	Slot 0	14
2.5.2	Slot 1	15
2.5.3	Slot 2	16
A	Summary	17
A.1	Status	17
A.2	Comments	17

1 Front

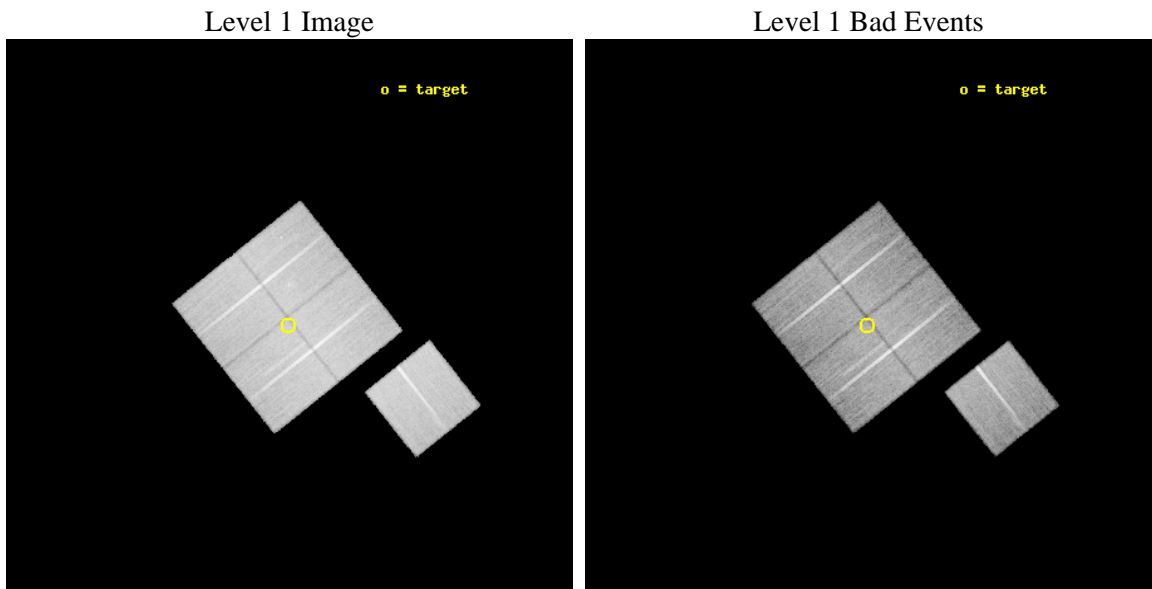
seq_num	701058	Sequence number
obs_id	5635	Observation id
title	A Chandra Study of Two Nearby, Powerful Radio Galaxies in Poor Environments	Proposal title
observer	Dr. Ralph Kraft	Principal investigator
object	3C 442A	Source name
dtcycle	0	
cycle	P	events from which exps? Prim/Second/Both
ra_targ	333.695833	Observer's specified target RA [deg]
dec_targ	13.77111	Observer's specified target Dec [deg]
ra_nom	333.69354339607	Nominal RA [deg]
dec_nom	13.775171552781	Nominal Dec [deg]
roll_nom	141.5092447312	Nominal Roll [deg]
revision	3	Processing version of data
ontime	27363.658957094	Sum of GTIs [s]
livetime	27006.132607987	Livetime [s]
ontime0	27366.799947351	Sum of GTIs [s]
ontime1	27363.658937186	Sum of GTIs [s]
ontime2	27360.517966837	Sum of GTIs [s]
ontime3	27363.658957094	Sum of GTIs [s]
ontime6	27363.658937156	Sum of GTIs [s]
l2events	149942	Number of level 2 events



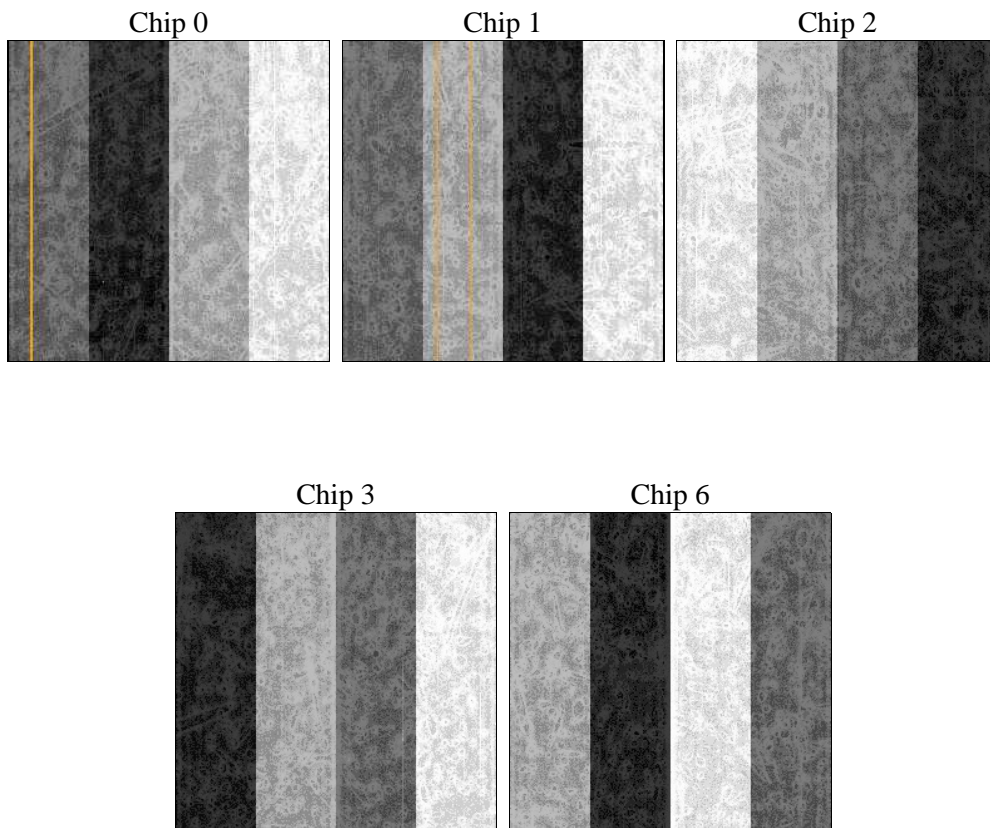
2 OBI

2.1 OBI

2.1.1 Images



2.1.2 Bias



2.1.3 Parameters

obi_num	1	Obi number	sched_exp_time	27192.345000	[s] Scheduled observation exposure time
ascdsver	8.5.1.1	Processing system revision	ontime	27363.658957094	Sum of GTIs [s]
caldbver	4.5.5	 	ontime0	27366.799947351	Sum of GTIs [s]
date	2012-12-26T16:19:44	Date and time of file creation	ontime1	27363.658937186	Sum of GTIs [s]
revision	3	Processing version of data	ontime2	27360.517966837	Sum of GTIs [s]
			ontime3	27363.658957094	Sum of GTIs [s]
			ontime6	27363.658937156	Sum of GTIs [s]
			l1events	1159072	Number of level 1 events

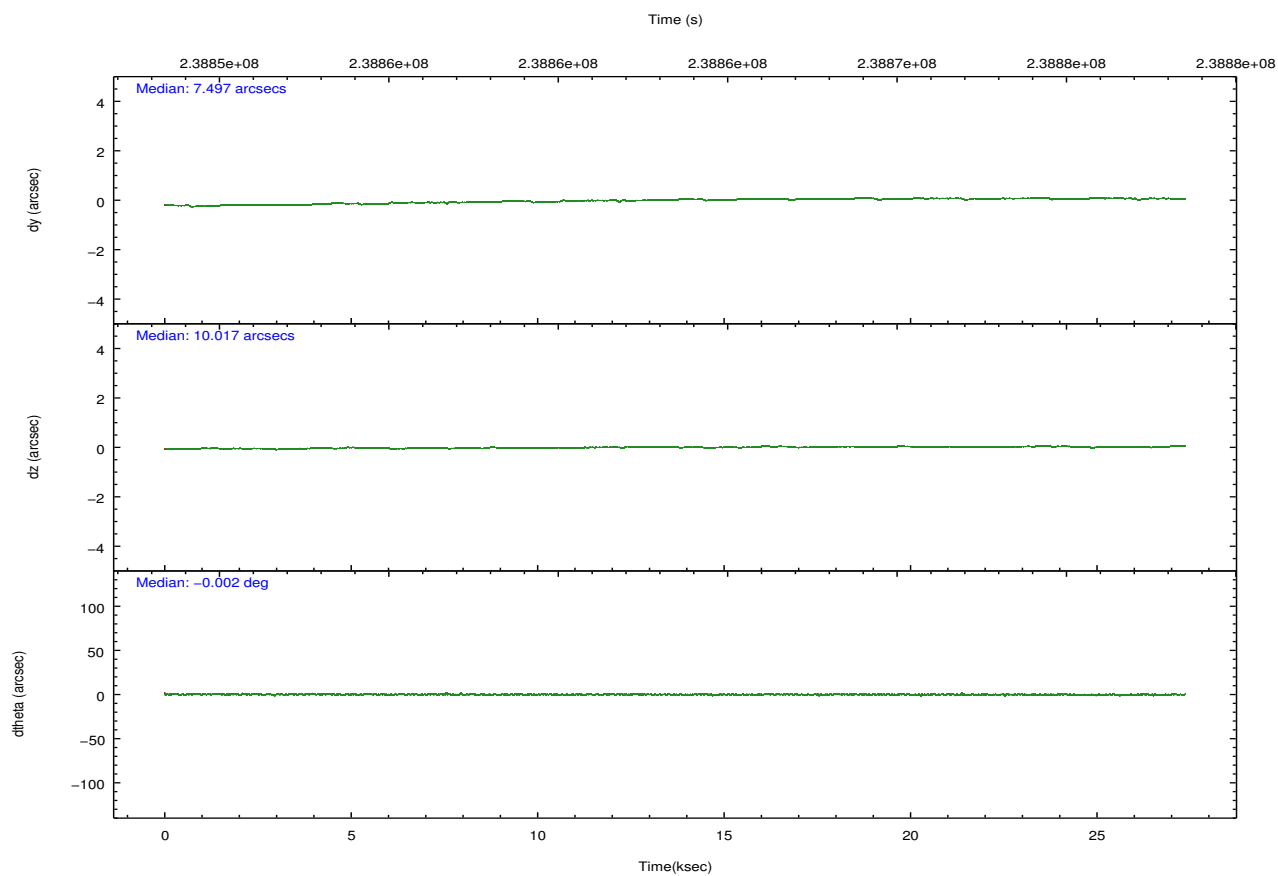
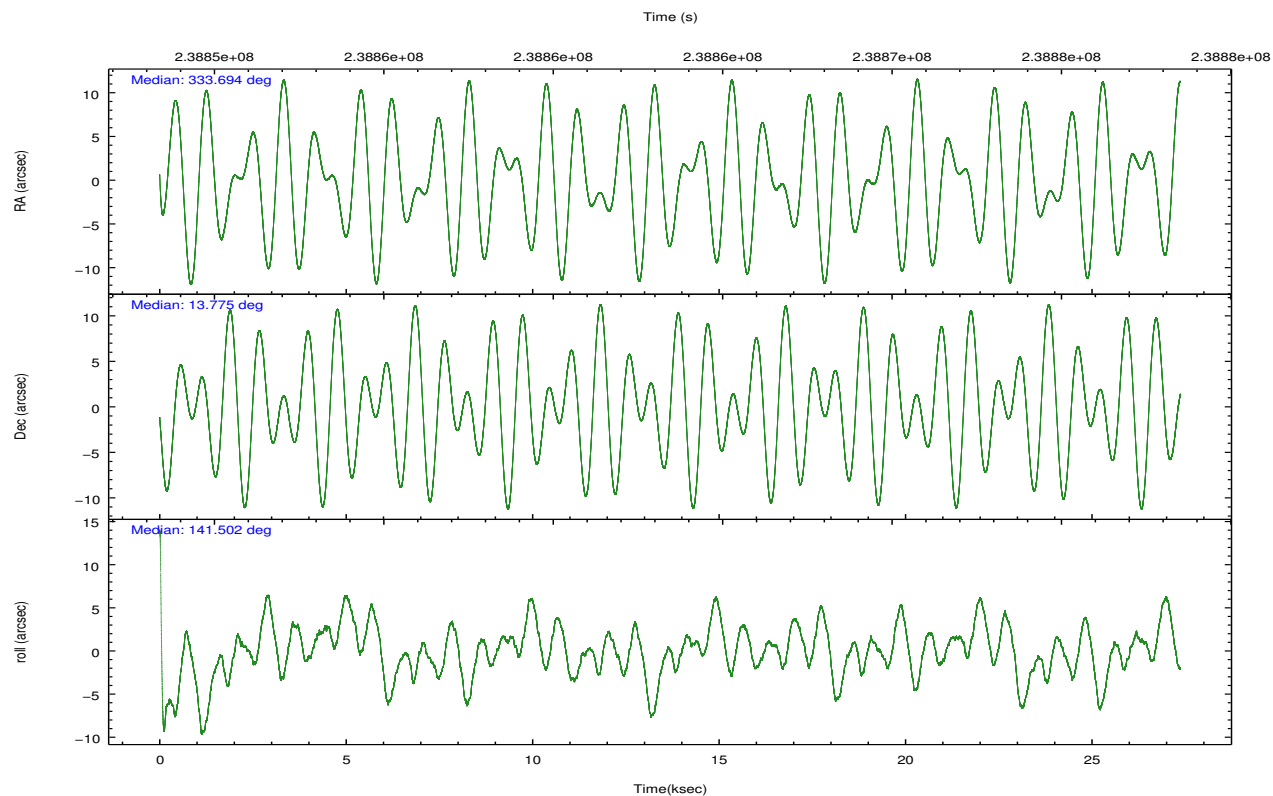
2.1.4 Events

	ccd 0	ccd 1	ccd 2	ccd 3	ccd 6		ccd 0	ccd 1	ccd 2	ccd 3	ccd 6
level 1 events	224757	219755	241773	236423	236364	grade 0 events	20138	15996	17369	16227	13773
rejected events	186566	184677	208009	203963	205250		8%	7%	7%	6%	5%
rejected %	83%	84%	86%	86%	86%	grade 1 events	202	141	197	183	120
							0%	0%	0%	0%	0%
						grade 2 events	7530	7831	6664	6266	6669
							3%	3%	2%	2%	2%
						grade 3 events	3186	3092	2969	2850	2842
							1%	1%	1%	1%	1%
						grade 4 events	2973	3056	2994	2958	2743
							1%	1%	1%	1%	1%
						grade 5 events	9396	9727	8982	10369	10471
							4%	4%	3%	4%	4%
						grade 6 events	5788	6584	5220	5559	6486
							2%	2%	2%	2%	2%
						grade 7 events	175544	173328	197378	192011	193260
							78%	78%	81%	81%	81%

2.2 Compared Parameters

Parameter	Planned	Actual	Parameter	Planned	Actual
Instrument	ACIS	ACIS	Obspar format version number	7	7
Detector	ACIS-01236	ACIS-01236	Obspar file type	PREDICTED	ACTUAL
Grating	NONE	NONE	Obspar update status	NONE	UPDATED
Data mode	VFAINT	VFAINT	Number of optional ACIS chips dropped	0	0
Observation mode	POINTING	POINTING	On-chip summing requested	N	N
[deg] Pointing RA	333.721449	333.6935433960733	Subarray requested	NONE	NONE
[deg] Pointing Dec	13.771246	13.77517155278074	Alternating exposures requested	N	N
[deg] Pointing Roll	141.293904	141.5092447311998	[s] Primary exposure time	0.000000	3.1
[mm] SIM focus pos	-0.782348	-0.7809083437167272			
[mm] SIM defocus	0	0.001439871863259334			
[mm] SIM translation stage pos	-233.592463	-233.5874344608287			
[mm] SIM translation stage offset	0	-0.005018542100998502			
[s] Observation start time (MET)	238849939.184000	238848344.00153			
Observation start date	2005-07-27T11:11:15	2005-07-27T10:45:44			
[s] Observation end time (MET)	238877132.184000	238878496.94041			
Observation end date	2005-07-27T18:44:28	2005-07-27T19:08:16			
Read mode	TIMED	TIMED			

2.3 Aspect

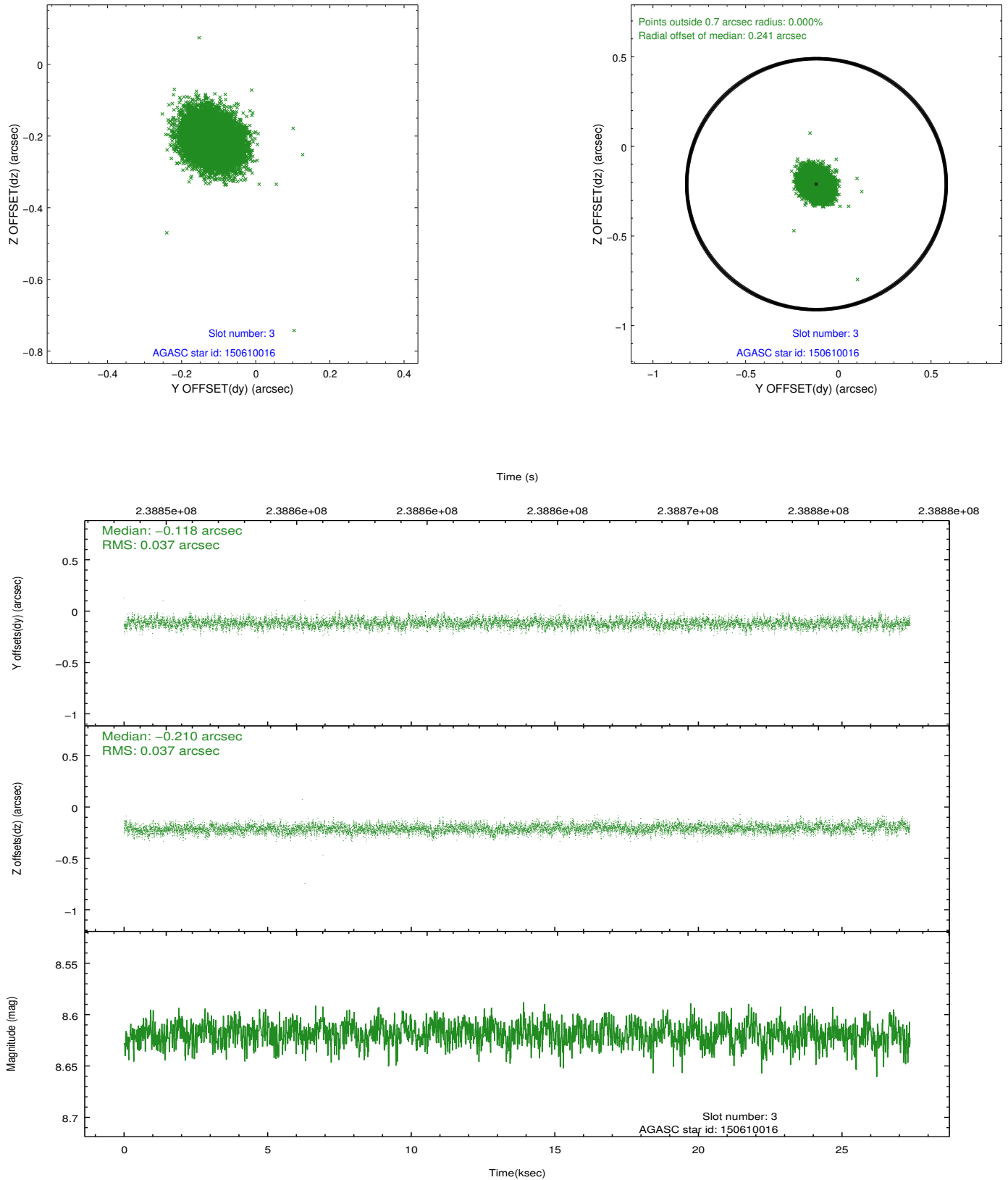


Slot Statistics

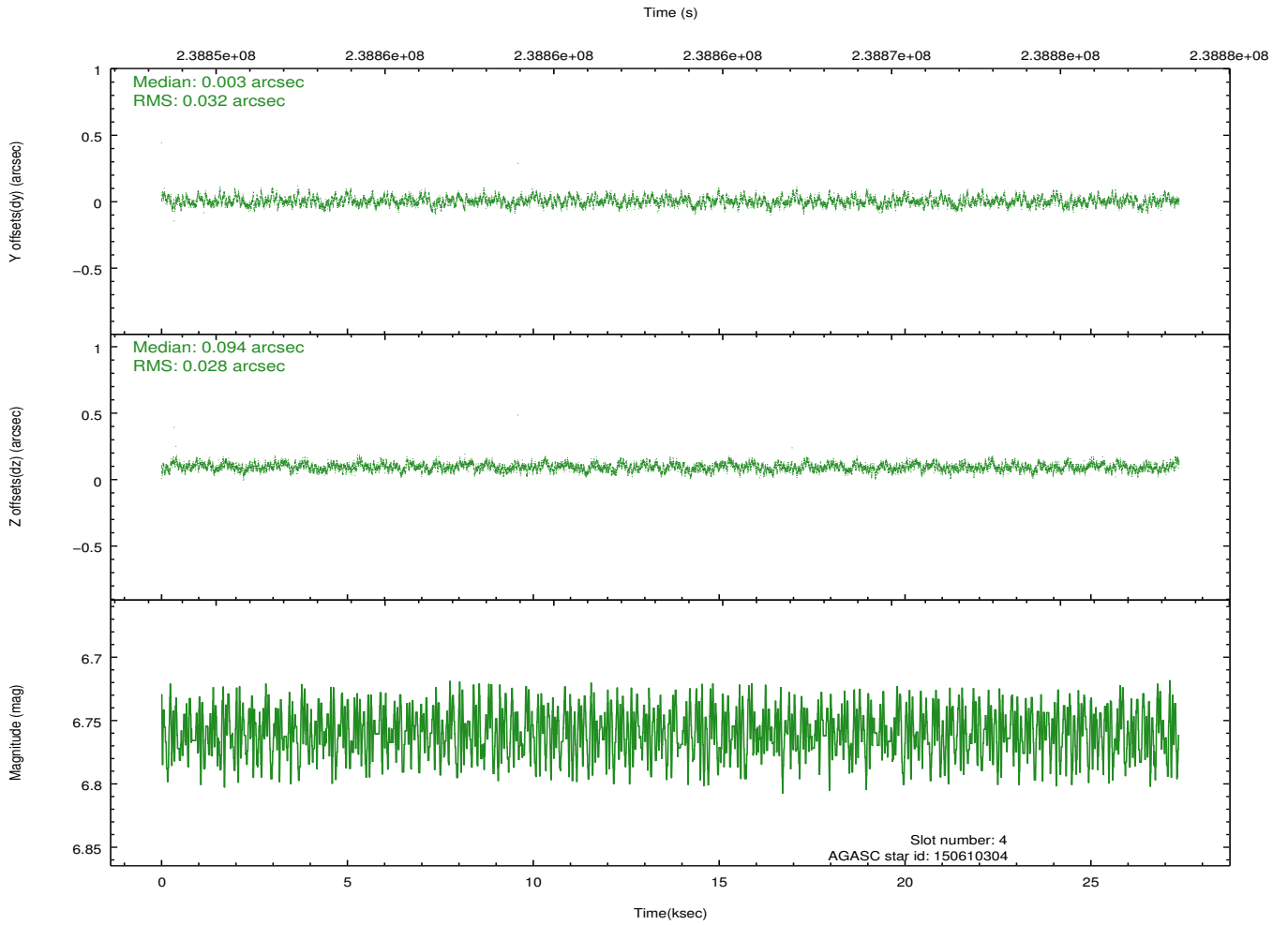
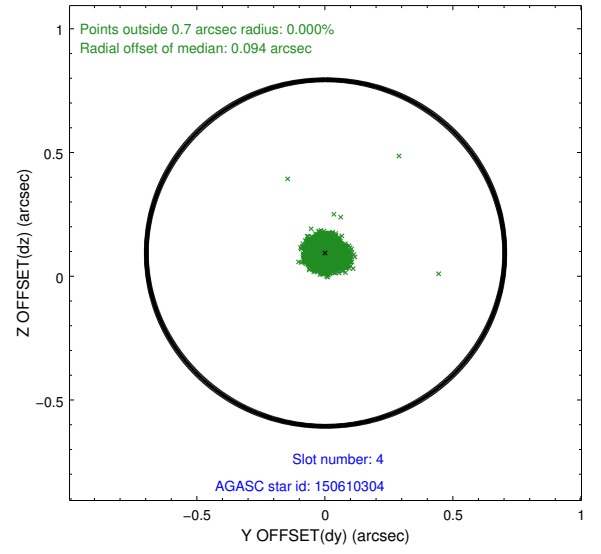
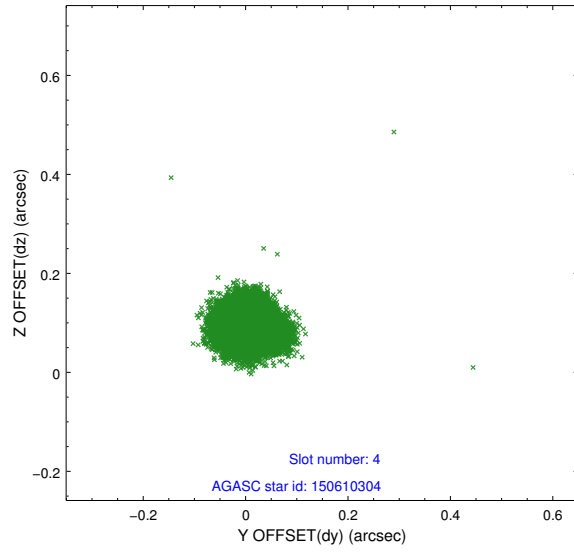
slot	status	id	mag	n_pts	med_dy	med_dz	dr1	dr2	ra	dec	mean_y	mean_z
0	FID	ACIS-I-1	7.24	6677	0.012	0.010	0.007	0.013	0.000000	0.000000	932.22	-833.47
1	FID	ACIS-I-5	7.23	6677	-0.170	0.029	0.007	0.013	0.000000	0.000000	-1816.03	1063.98
2	FID	ACIS-I-6	7.25	6676	0.067	0.031	0.007	0.012	0.000000	0.000000	397.70	1708.60
3	GUIDE	150610016	8.62	13349	-0.118	-0.210	0.056	0.091	333.607680	13.272180	-812.57	1651.28
4	GUIDE	150610304	6.76	13353	0.003	0.094	0.045	0.071	334.517012	13.950326	-1763.06	-2244.73
5	GUIDE	150614840	8.69	13349	0.126	0.020	0.080	0.131	333.996804	13.803587	-677.80	-693.15
6	GUIDE	150606032	8.76	13307	-0.052	-0.068	0.069	0.113	333.468551	13.881130	937.43	244.00
7	GUIDE	150605048	8.31	13352	0.039	0.169	0.066	0.108	334.582600	13.956006	-1928.00	-2404.42

2.4 Star Slots

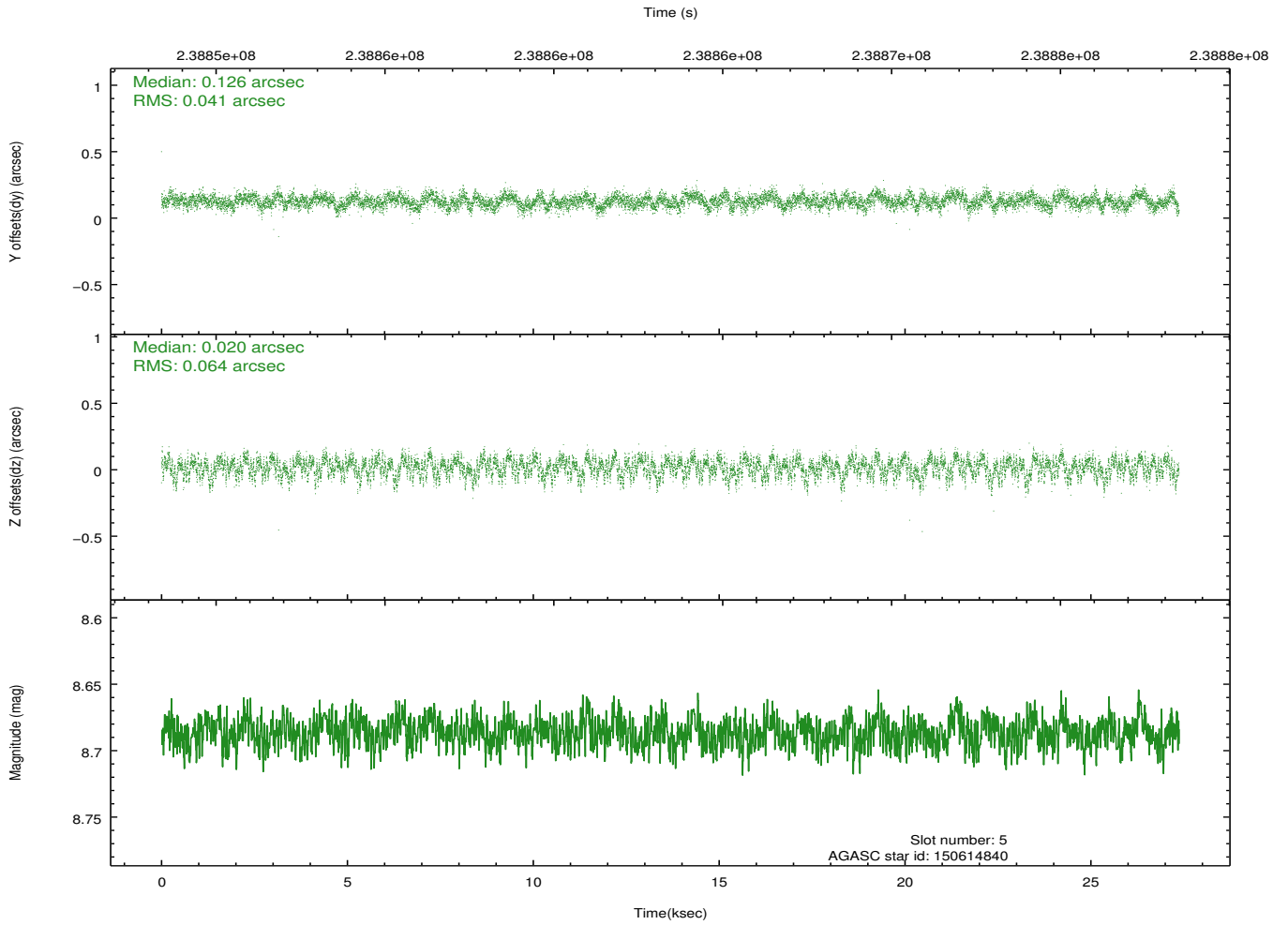
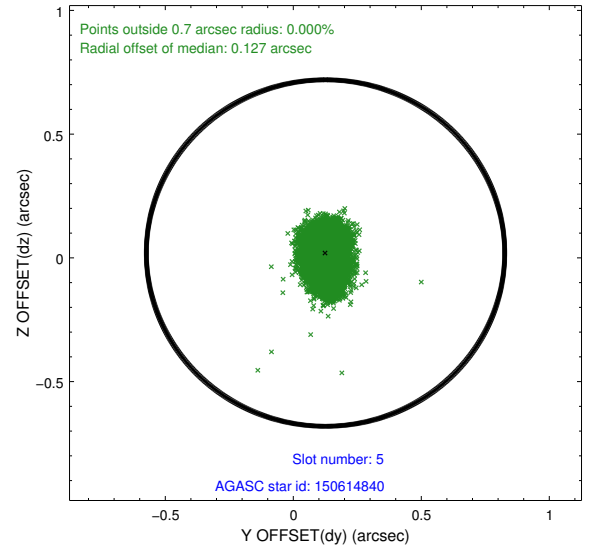
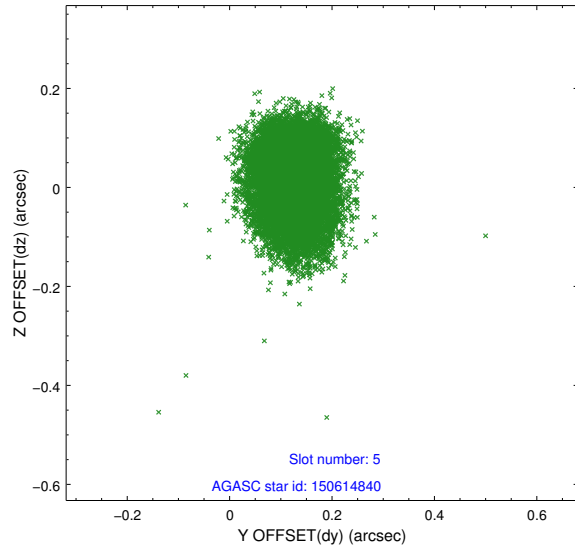
2.4.1 Slot 3



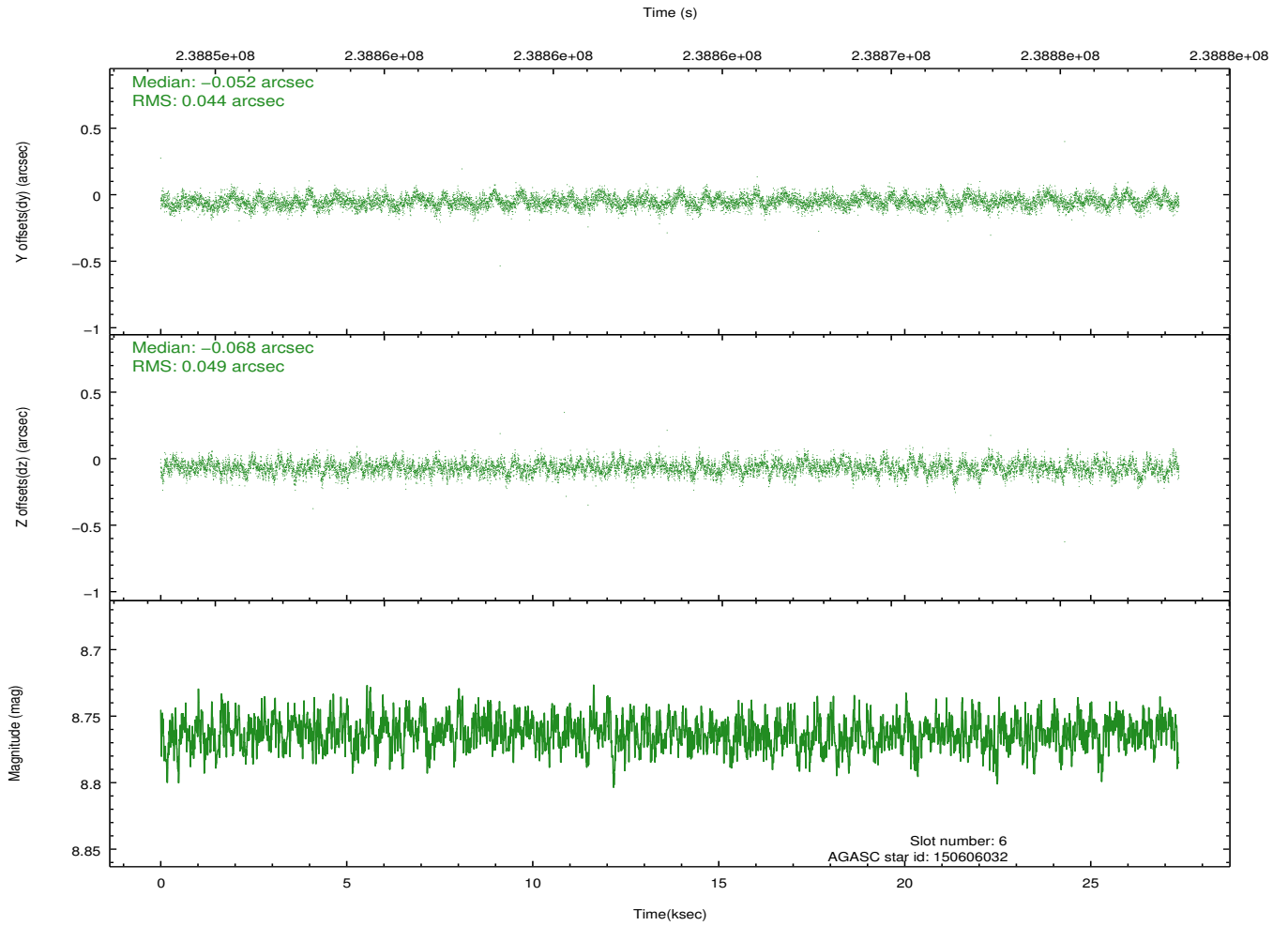
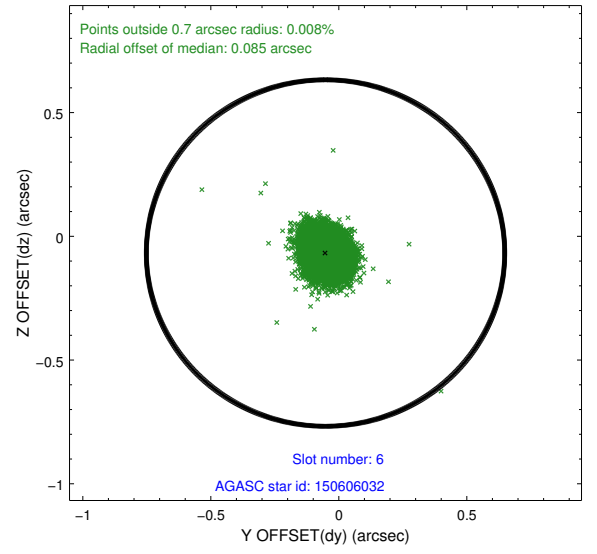
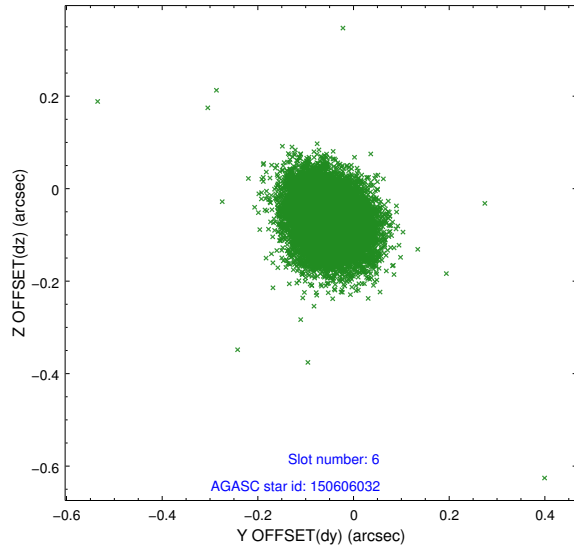
2.4.2 Slot 4



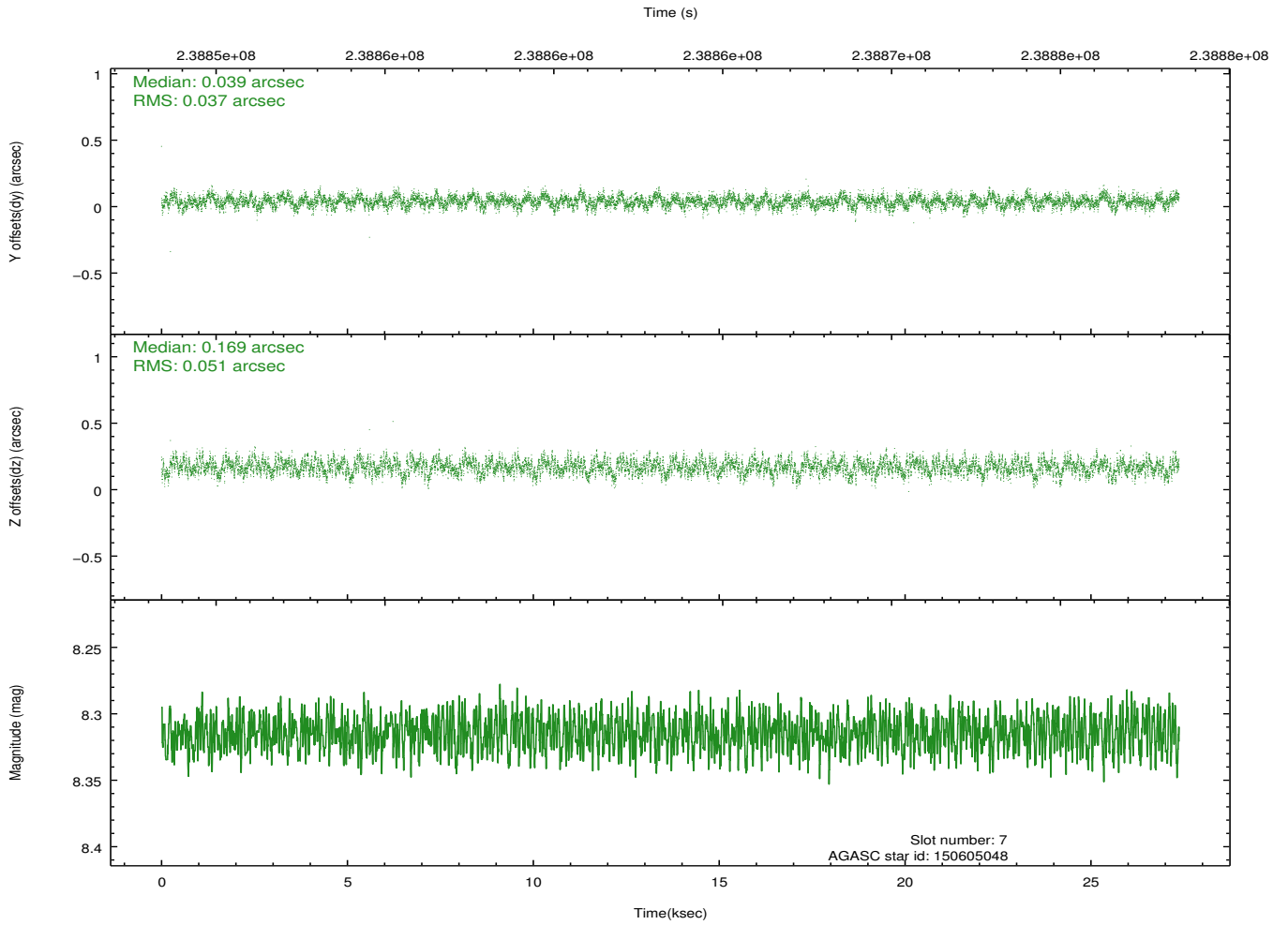
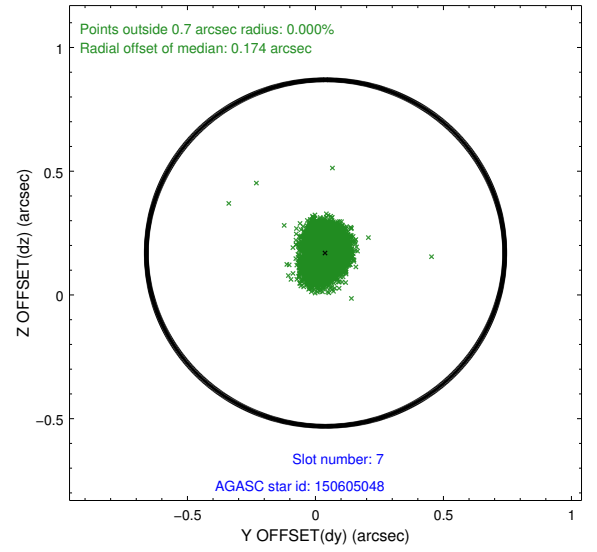
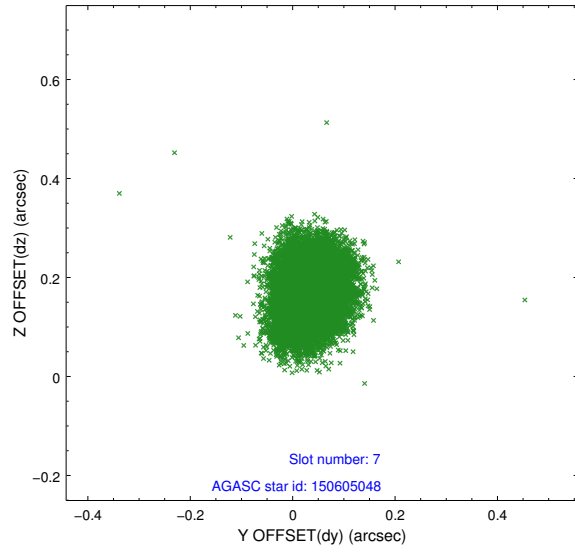
2.4.3 Slot 5



2.4.4 Slot 6

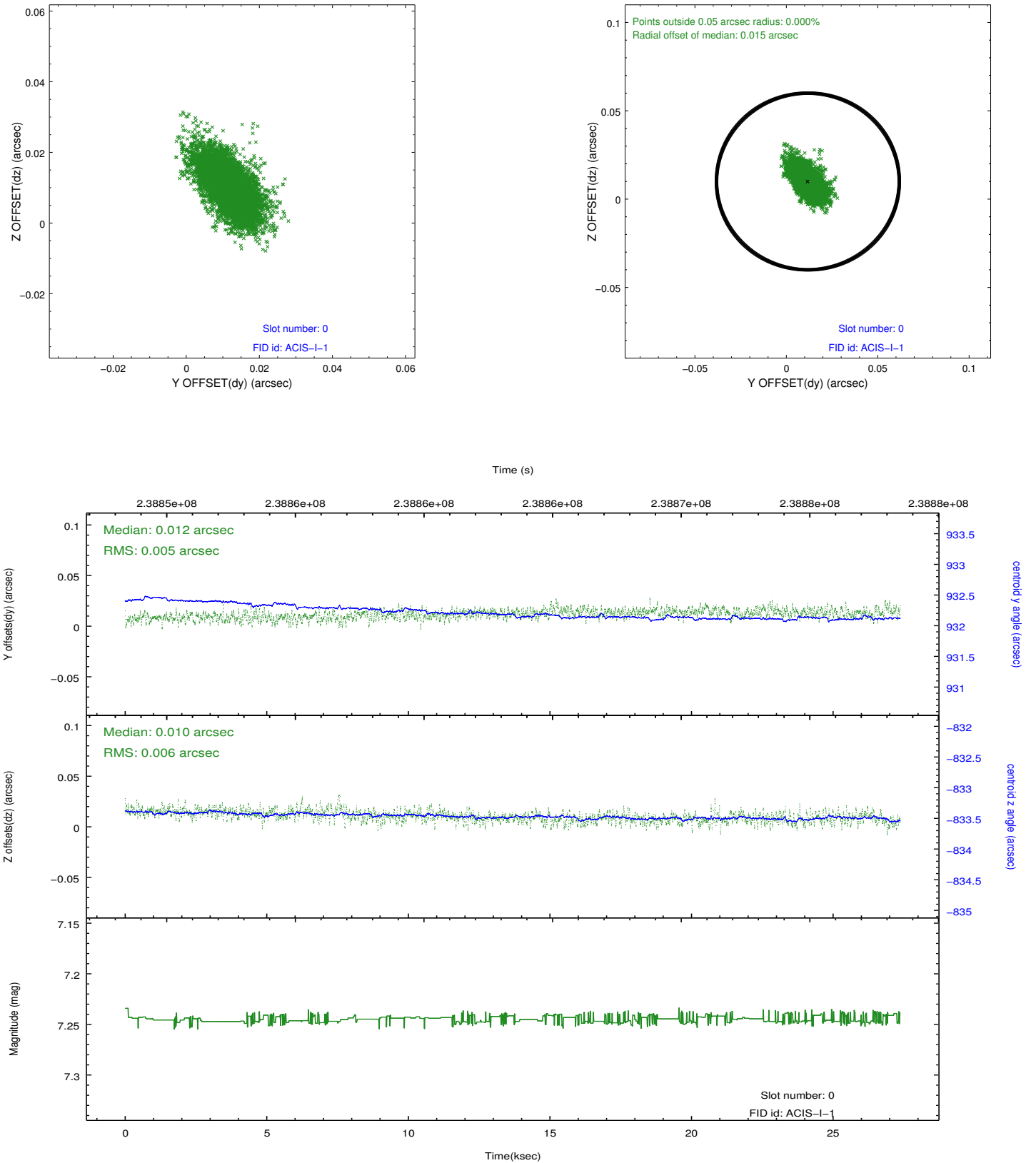


2.4.5 Slot 7

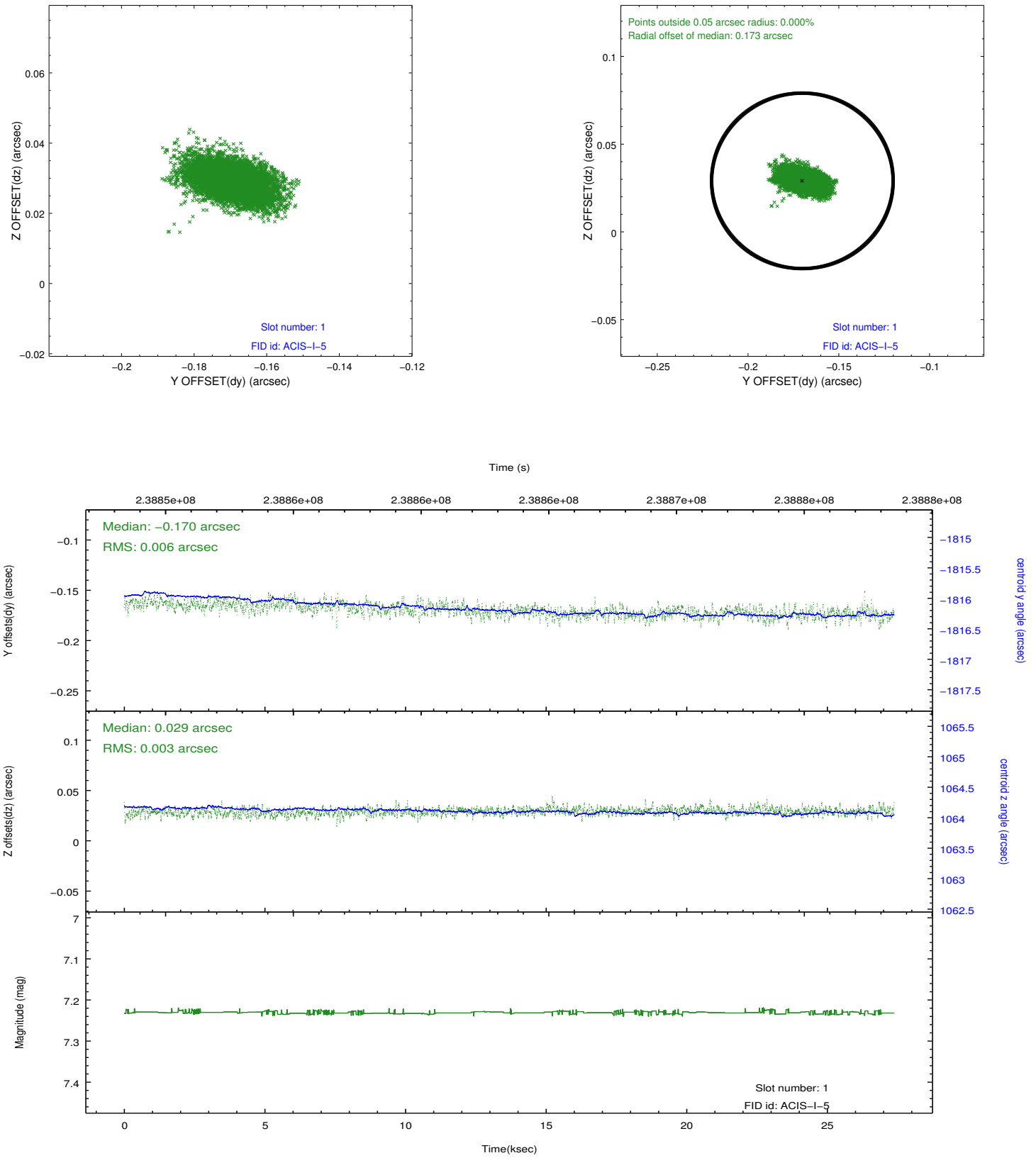


2.5 FID Slots

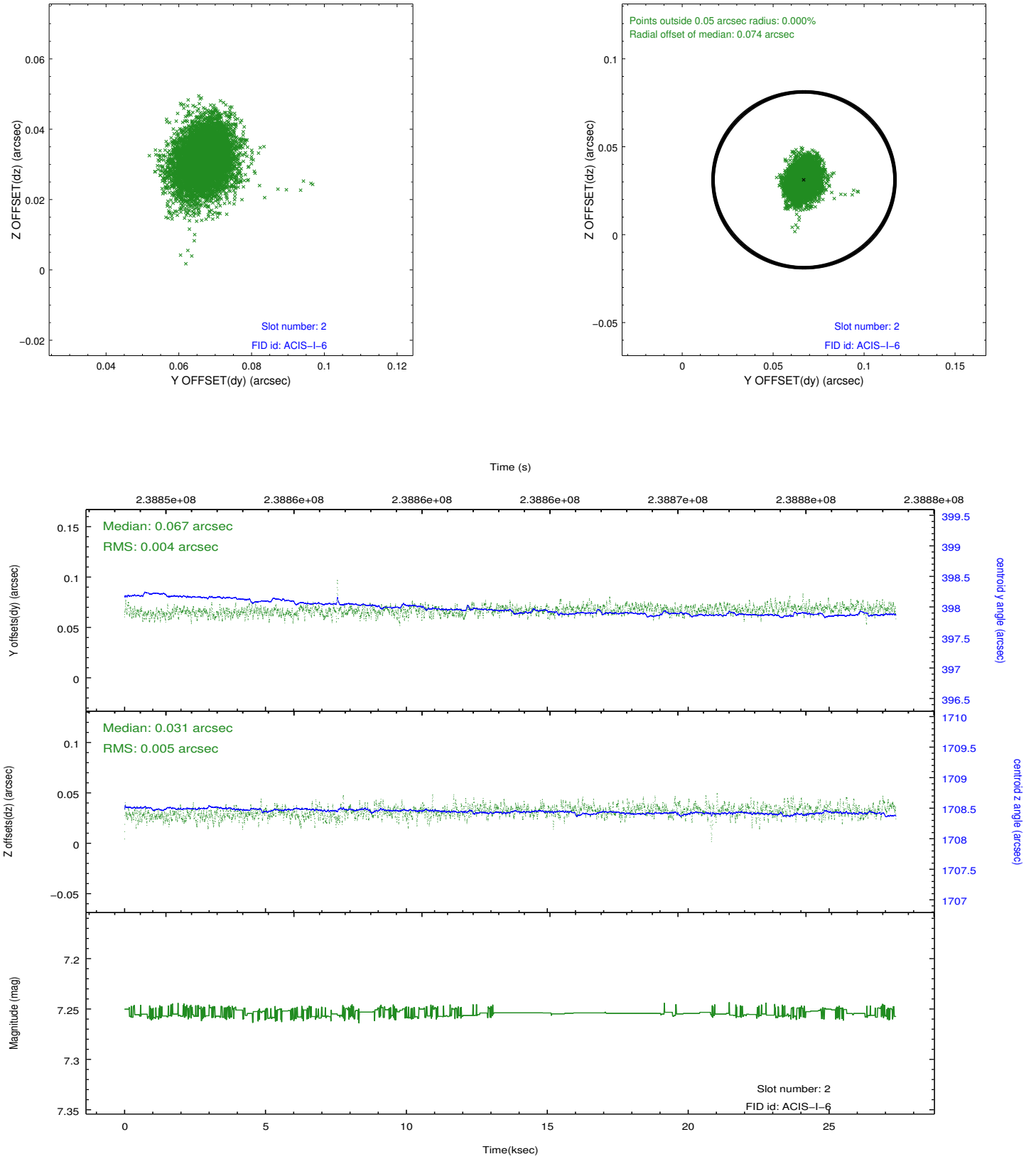
2.5.1 Slot 0



2.5.2 Slot 1



2.5.3 Slot 2



A Summary

A.1 Status

V&V Scientist	Jen Lauer
V&V Date (YYYY-MM-DD)	2013.01.23
V&V Edition	1
V&V Disposition and Status	OK
V&V Charge Time	28.57379

A.2 Comments

Charge time for this ObsId remains at previous value of 28.57379 ks although with the current processing the charge time would have been 27.36 ksec.