

# V&V Reference Report

## L2 ASCDS Version : 7.6.7

Observation 5627 - L2 Version 002  
Chandra X-Ray Center

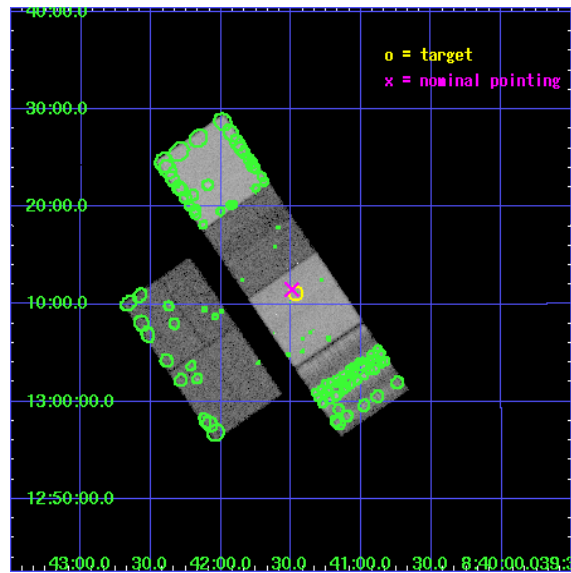
L2 Processing Date: Feb 17 2006

## Contents

<b>1</b>	<b>Front</b>	<b>2</b>
<b>2</b>	<b>OBI</b>	<b>3</b>
2.1	OBI . . . . .	3
2.1.1	Images . . . . .	3
2.1.2	Bias . . . . .	3
2.1.3	Parameters . . . . .	4
2.1.4	Events . . . . .	4
2.2	Compared Parameters . . . . .	5
2.3	Aspect . . . . .	6
2.4	Star Slots . . . . .	9
2.4.1	Slot 3 . . . . .	9
2.4.2	Slot 4 . . . . .	10
2.4.3	Slot 5 . . . . .	11
2.4.4	Slot 6 . . . . .	12
2.4.5	Slot 7 . . . . .	13
2.5	FID Slots . . . . .	14
2.5.1	Slot 0 . . . . .	14
2.5.2	Slot 1 . . . . .	15
2.5.3	Slot 2 . . . . .	16
<b>3</b>	<b>Point Sources</b>	<b>17</b>
<b>A</b>	<b>Summary</b>	<b>18</b>
A.1	Status . . . . .	18
A.2	Comments . . . . .	18

# 1 Front

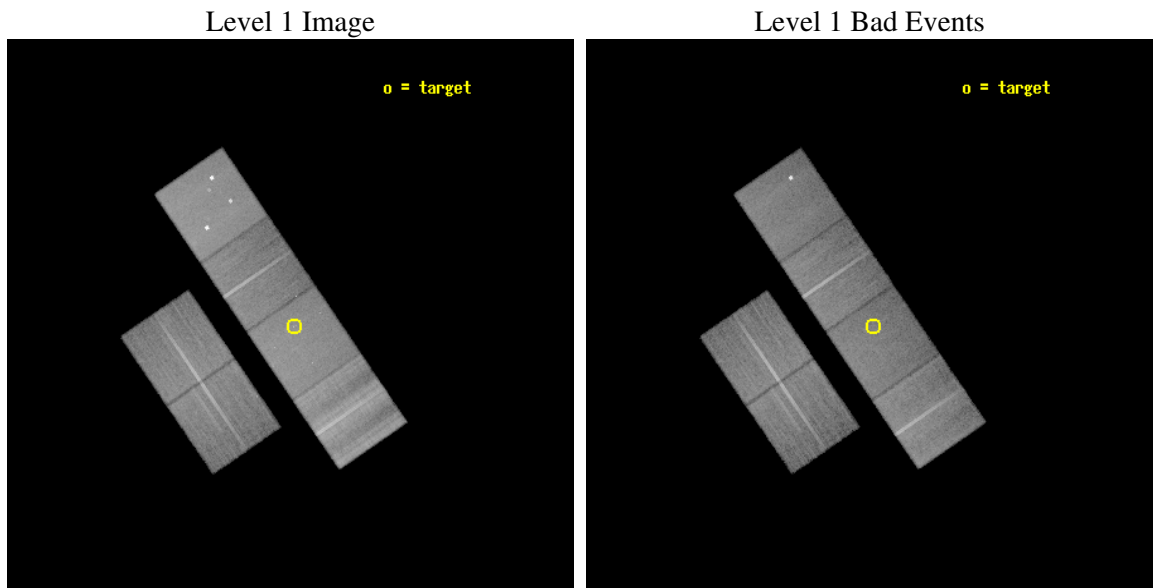
seq_num	701050
obs_id	5627
title	The Jet-Like X-ray Structure at the High Redshift Quasar J0841+1311
observer	Dr. Daniel Schwartz
object	CXOMP J084128.3+131107
dtcycle	0
cycle	P
ra_targ	130.366667
dec_targ	13.185278
ra_nom	130.37361272324
dec_nom	13.192183530745
roll_nom	55.686606310624
revision	2
ontime	27180.799898744
livetime	26836.620244113
ontime2	27180.799898744
ontime3	27180.799898744
ontime5	27180.799898744
ontime6	27180.799898744
ontime7	27180.799898744
ontime8	27180.799898744
l2events	354947



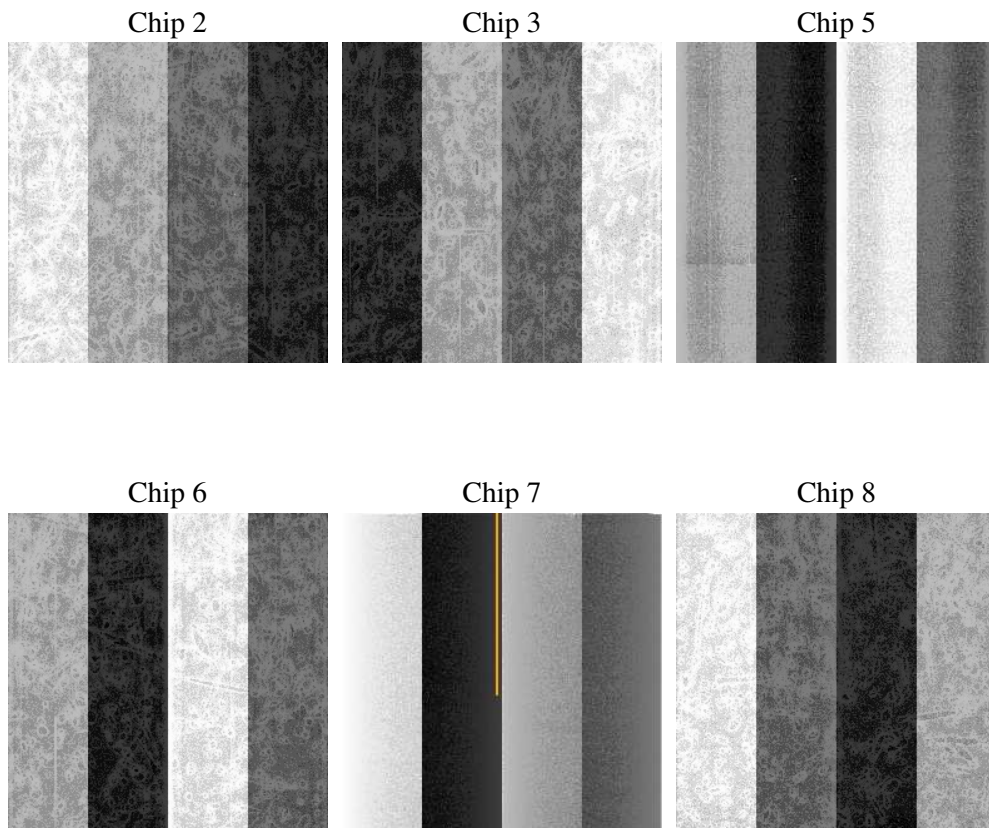
## 2 OBI

### 2.1 OBI

#### 2.1.1 Images



#### 2.1.2 Bias



### 2.1.3 Parameters

obi_num	1
ascdsver	7.6.7
caldsver	3.2.1
date	2006-02-17T18:19:50
revision	2

sched_exp_time	27000.000000
ontime	28381.5246602
ontime2	28381.524749756
ontime3	28381.5246602
ontime5	28381.5246602
ontime6	28381.5246602
ontime7	28381.5246602
ontime8	28381.5246602
l1events	1674286

### 2.1.4 Events

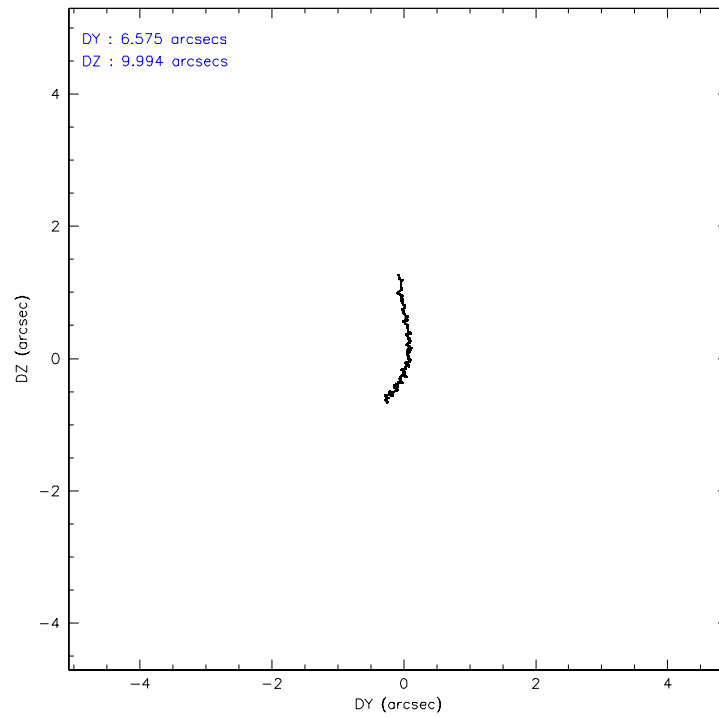
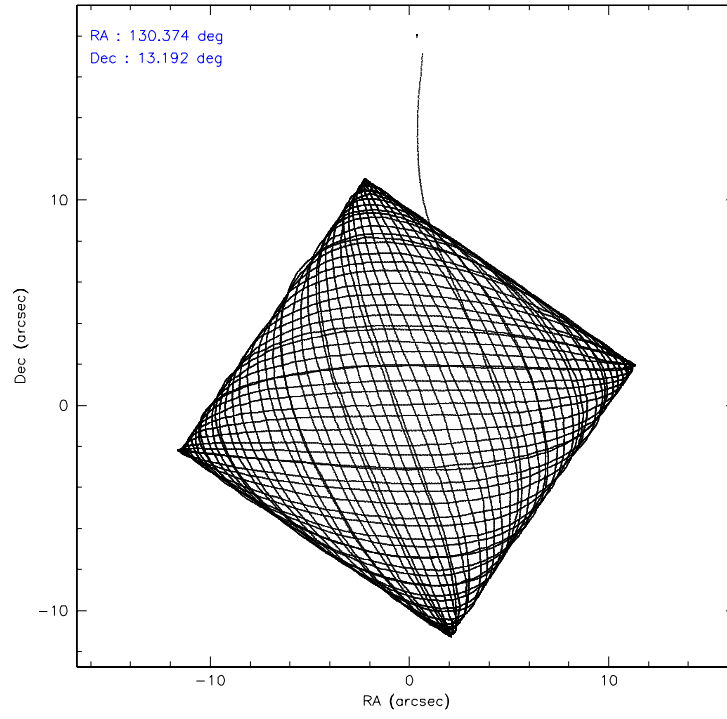
	ccd 2	ccd 3	ccd 5	ccd 6	ccd 7	ccd 8
level 1 events	238361	220588	336214	232519	289825	356779
rejected events	209960	194362	190505	205318	183943	233683
rejected %	88%	88%	56%	88%	63%	65%

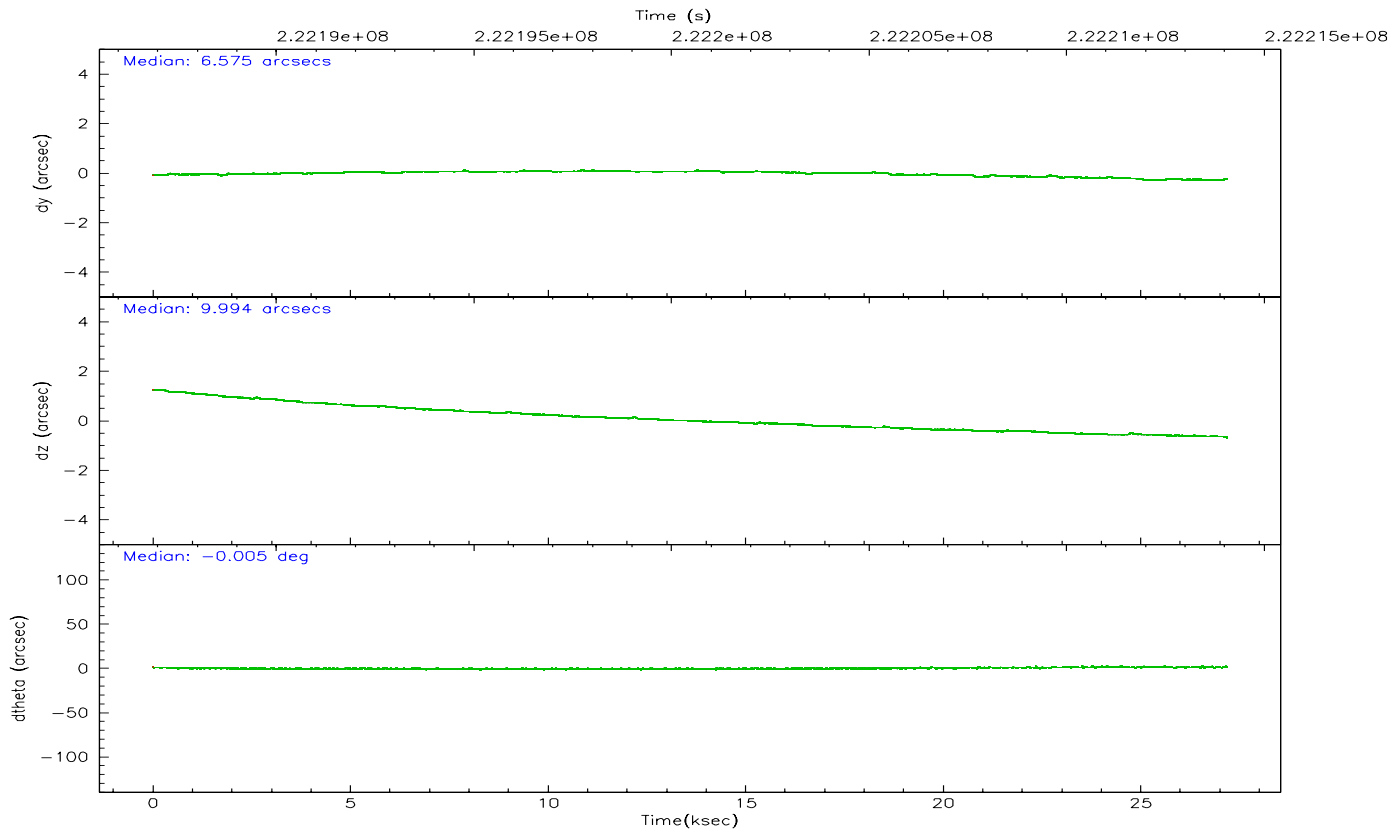
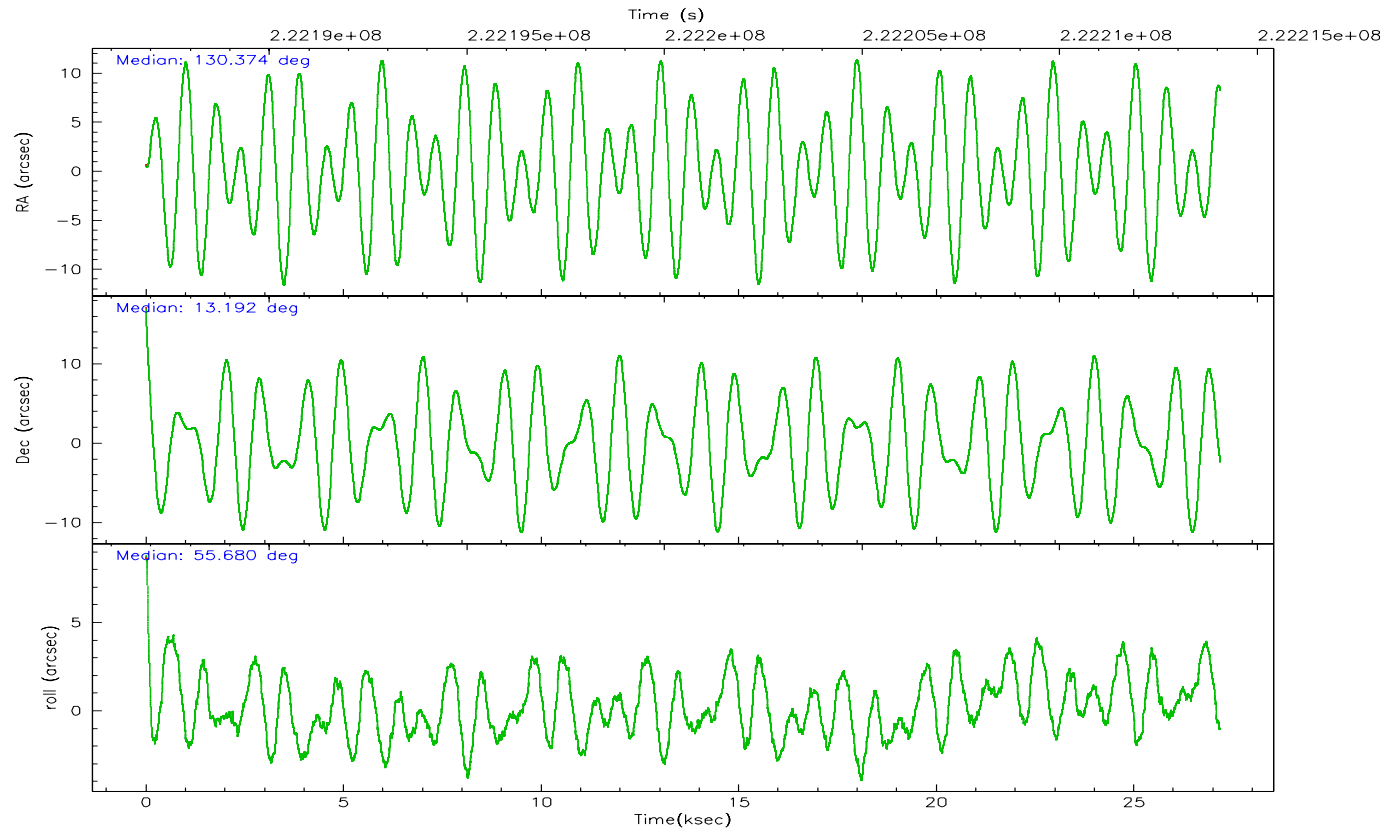
	ccd 2	ccd 3	ccd 5	ccd 6	ccd 7	ccd 8
grade 0 events	13247	11725	17985	11267	6359	39890
	5%	5%	5%	4%	2%	11%
grade 1 events	165	160	367	125	208	364
	0%	0%	0%	0%	0%	0%
grade 2 events	6526	5554	47148	6380	27943	21120
	2%	2%	14%	2%	9%	5%
grade 3 events	2343	2572	3630	2491	5556	19976
	0%	1%	1%	1%	1%	5%
grade 4 events	2638	2421	3387	2540	5413	17707
	1%	1%	1%	1%	1%	4%
grade 5 events	8441	9195	16566	9704	18849	13618
	3%	4%	4%	4%	6%	3%
grade 6 events	4839	5041	80163	5667	65335	28574
	2%	2%	23%	2%	22%	8%
grade 7 events	200162	183920	166968	194345	160162	215530
	83%	83%	49%	83%	55%	60%

## 2.2 Compared Parameters

Parameter	Planned	Actual	Parameter	Planned	Actual
Instrument	ACIS	ACIS	Obspar format version number	6	6
Detector	ACIS-235678	ACIS-235678	Obspar file type	PREDICTED	ACTUAL
Grating	NONE	NONE	Obspar update status	NONE	UPDATED
Data mode	VFAINT	VFAINT	On-chip summing requested	N	N
Observation mode	POINTING	POINTING	Subarray requested	NONE	NONE
Pointing RA	130.371898	130.3736127232364	Alternating exposures requested	N	N
Pointing Dec	13.165006	13.19218353074545	Primary exposure time	0.000000	3.2
Pointing Roll	55.530363	55.6866063106238			
SIM focus pos (mm)	-0.684267	-0.6828225247311905			
SIM defocus (mm)	0	0.001444936568705701			
SIM translation stage pos (mm)	-190.132523	-190.1400660498719			
SIM translation stage offset (mm)	0	0.00754346686406393			
Observation start time	222187067.184000	222185395.38133			
Observation start date	2005-01-15T14:36:43	2005-01-15T14:09:55			
Observation end time	222214067.184000	222215081.94517			
Observation end date	2005-01-15T22:06:43	2005-01-15T22:24:41			
Read mode	TIMED	TIMED			

## 2.3 Aspect



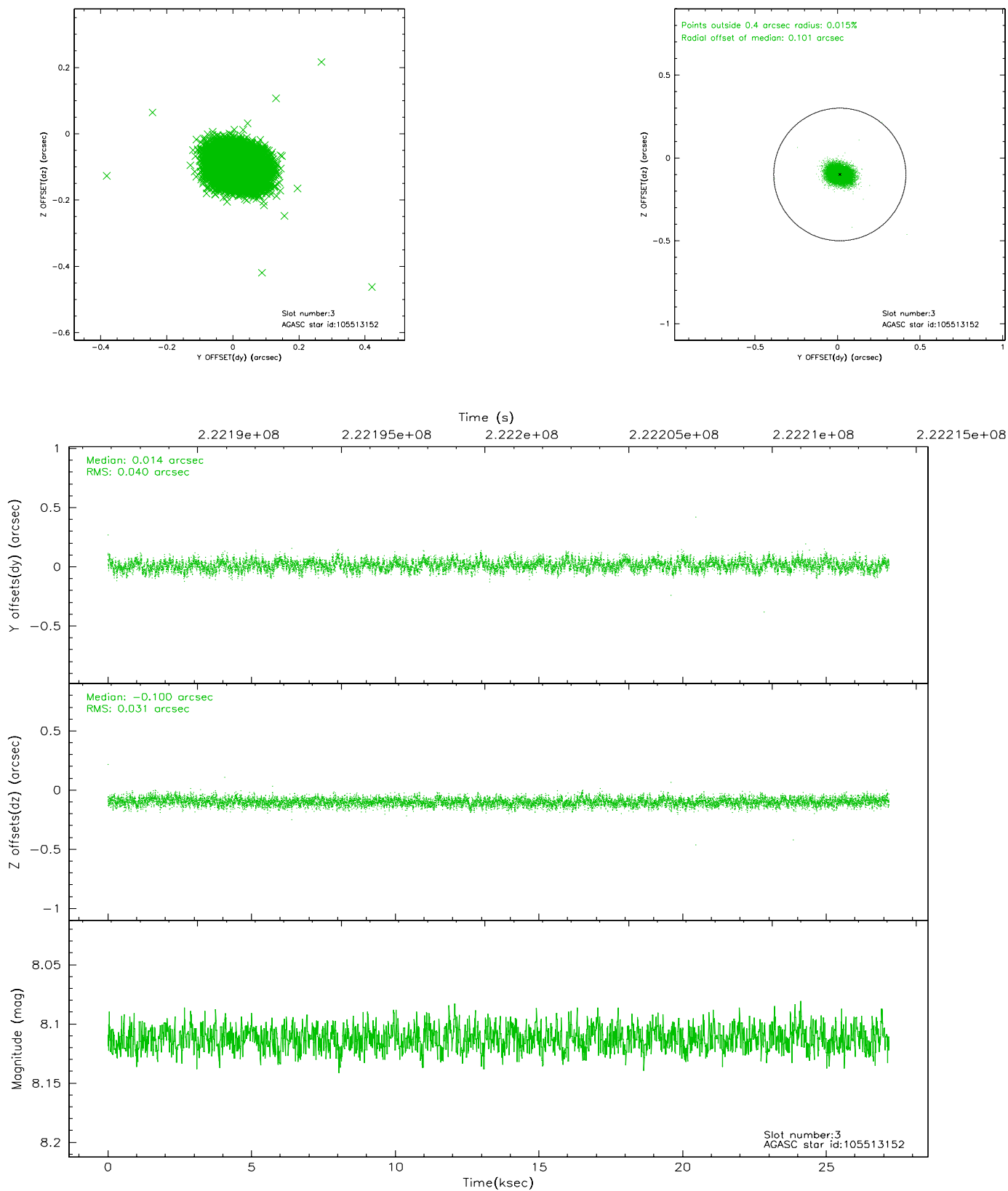


### Slot Statistics

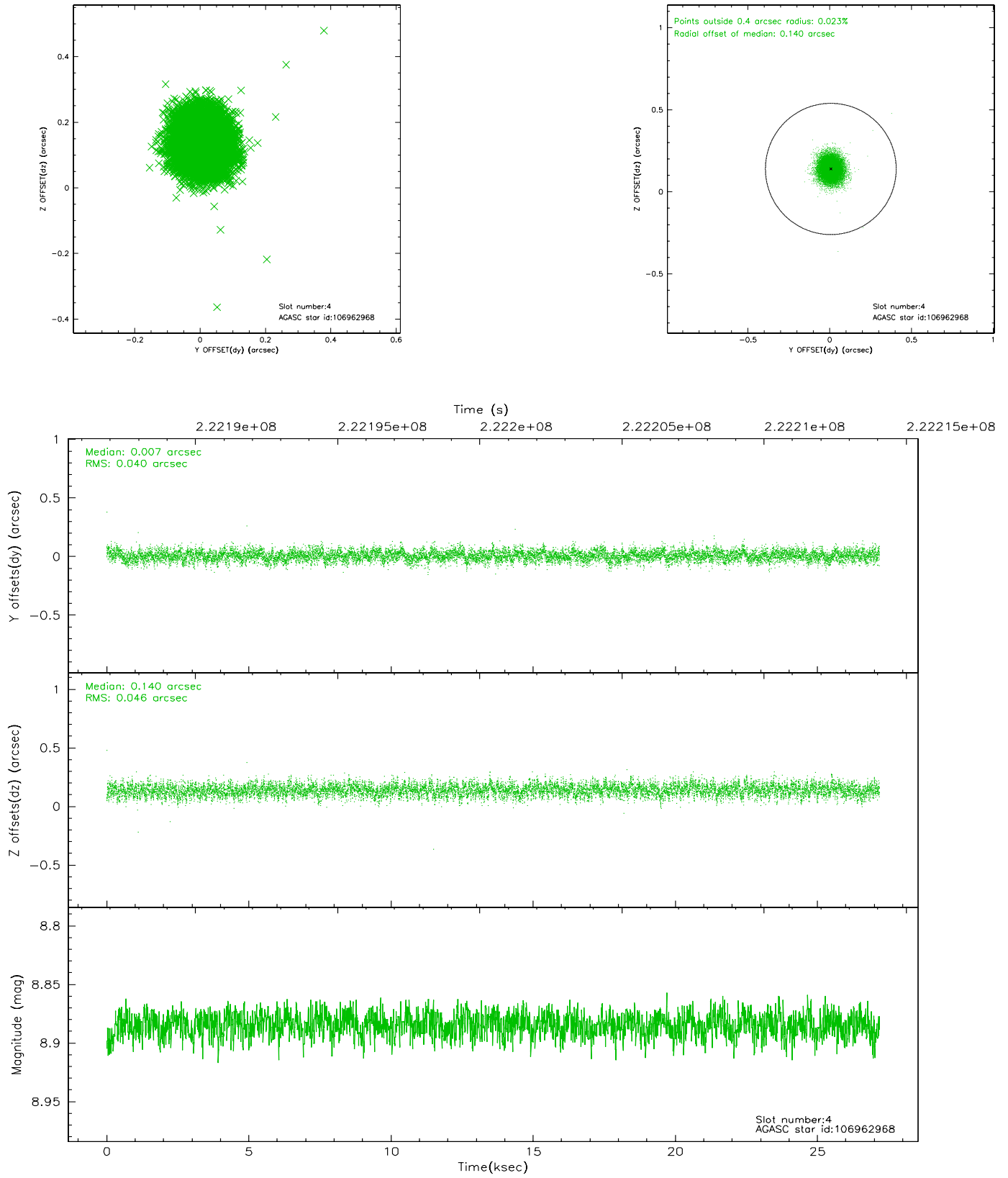
slot	status	id	mag	n_pts	med_dy	med_dz	dr1	dr2	ra	dec	mean_y	mean_z
0	FID	ACIS-S-2	7.10	6631	-0.047	0.001	0.011	0.021	0.000000	0.000000	-759.30	-1731.34
1	FID	ACIS-S-4	7.21	6631	0.039	0.022	0.009	0.023	0.000000	0.000000	2153.99	177.11
2	FID	ACIS-S-5	7.23	6631	-0.024	-0.015	0.010	0.020	0.000000	0.000000	-1812.03	170.79
3	GUIDE	105513152	8.11	13258	0.014	-0.100	0.054	0.087	129.815846	12.960374	-1710.32	1192.66
4	GUIDE	106962968	8.88	13257	0.007	0.140	0.064	0.105	130.463087	13.055809	-142.91	-485.72
5	GUIDE	106964424	9.27	13232	0.036	0.068	0.086	0.139	130.578066	13.374693	1031.15	-167.55
6	GUIDE	106965360	8.74	13260	-0.013	0.105	0.088	0.140	130.587812	12.638213	-1133.50	-1698.36
7	GUIDE	106043672	9.03	13252	-0.039	-0.210	0.107	0.166	129.948191	13.729914	838.78	2373.32

## 2.4 Star Slots

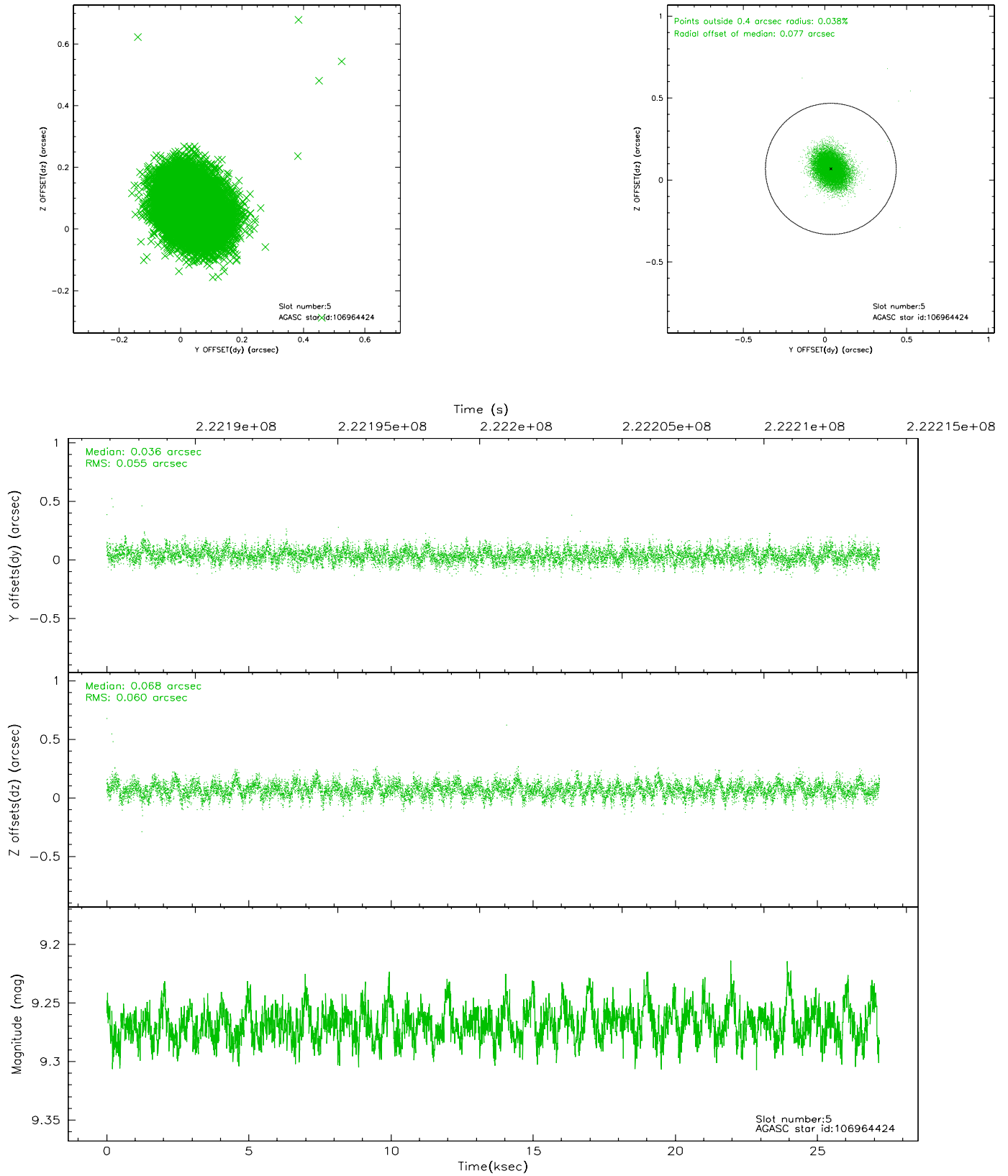
### 2.4.1 Slot 3



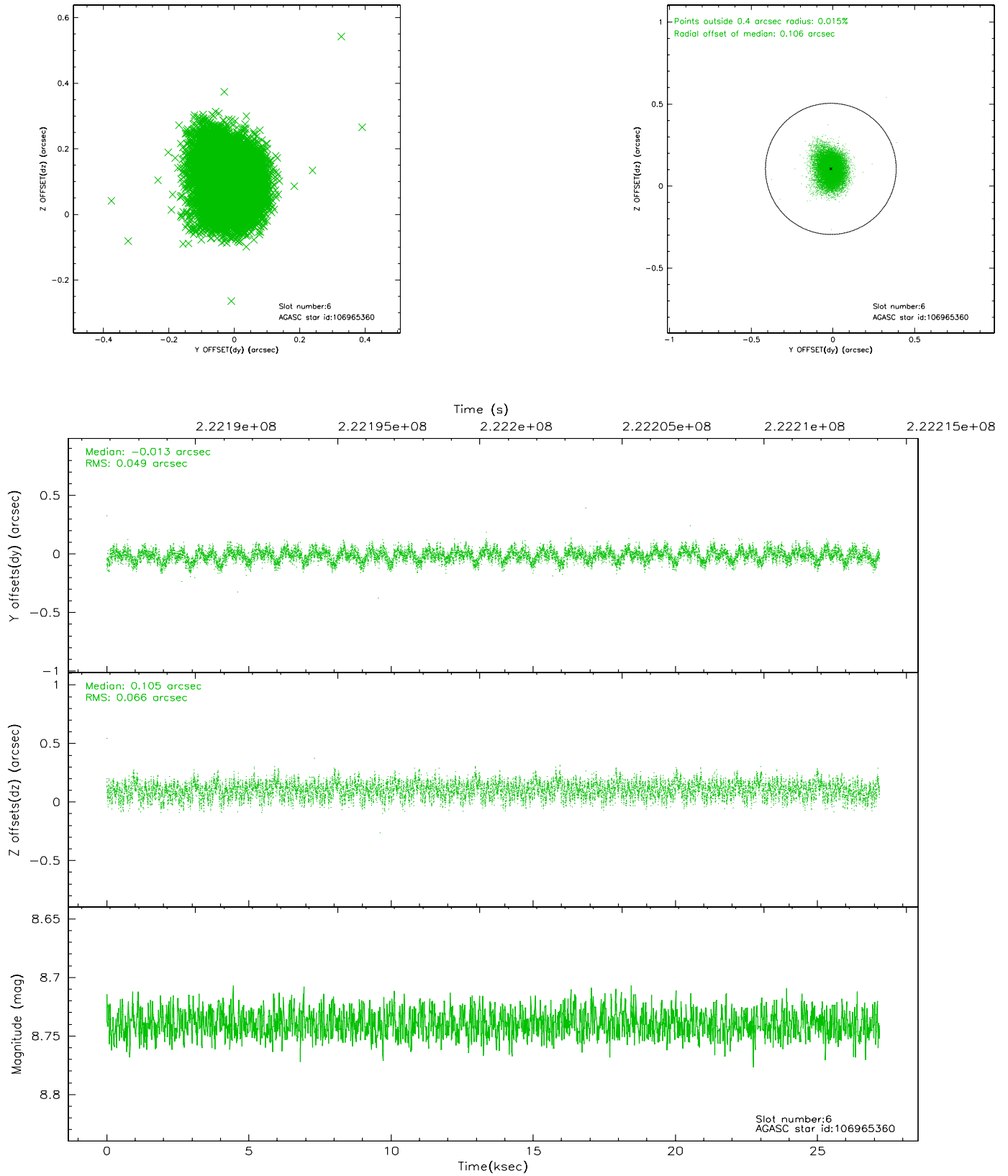
## 2.4.2 Slot 4



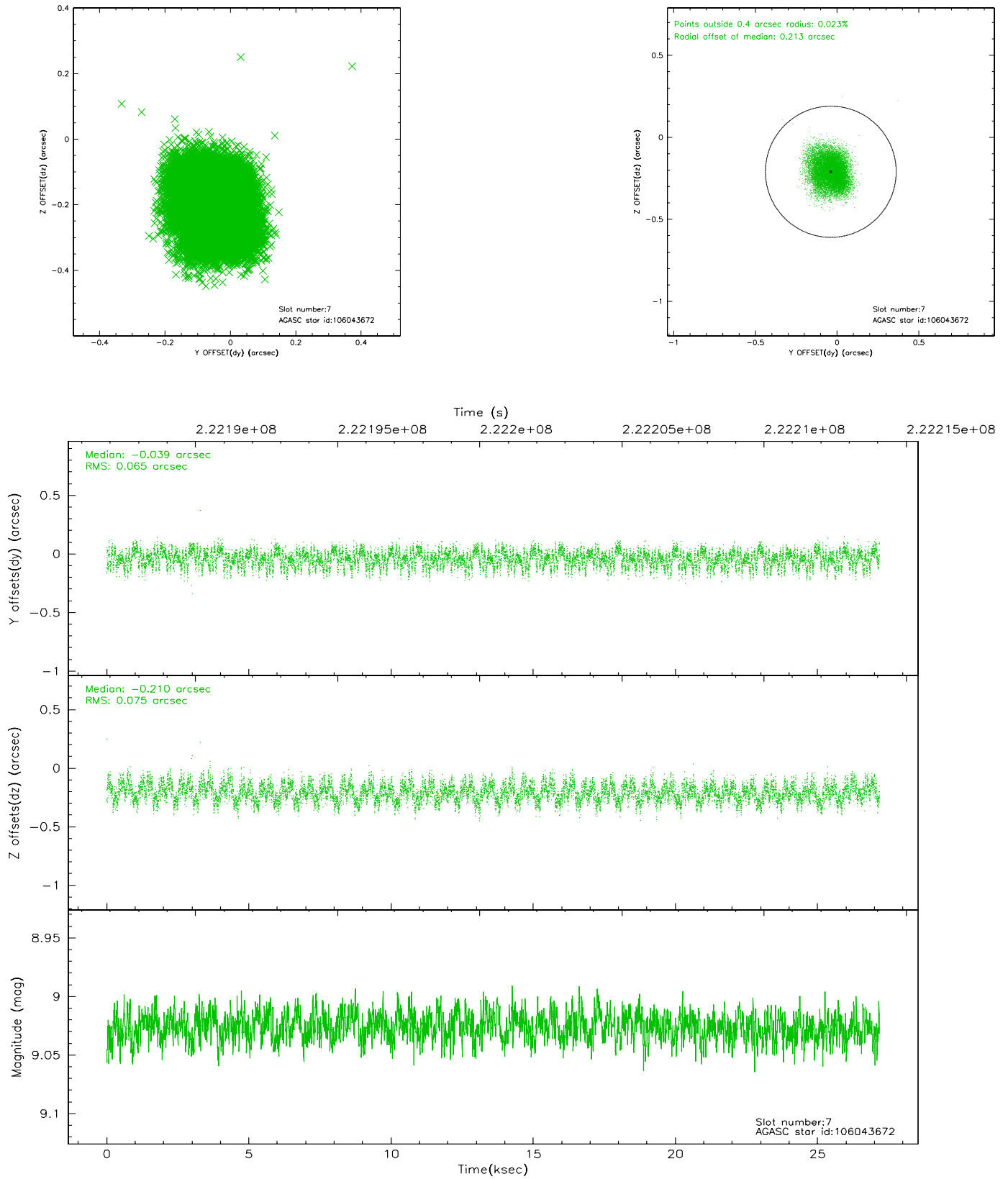
### 2.4.3 Slot 5



## 2.4.4 Slot 6

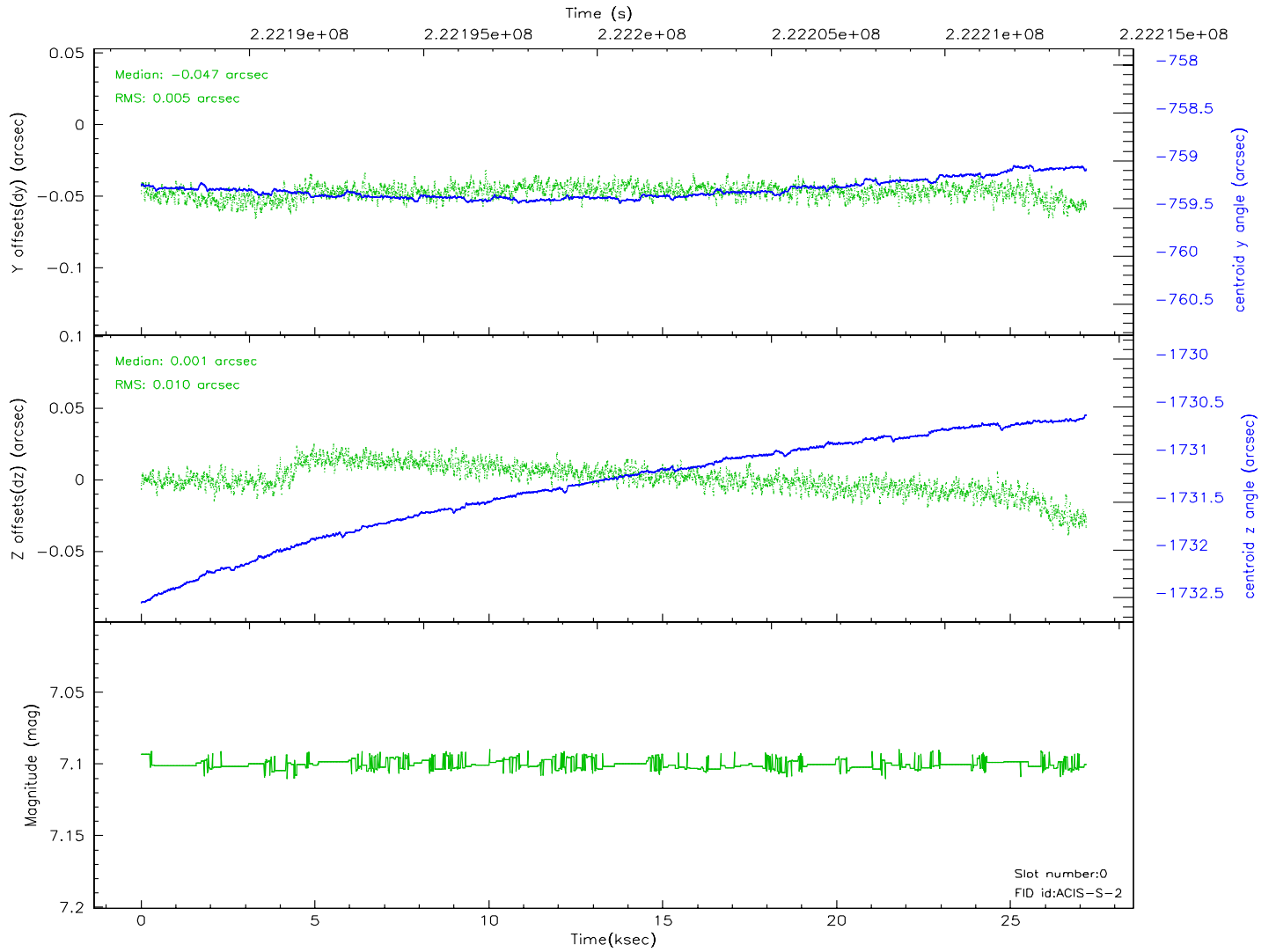
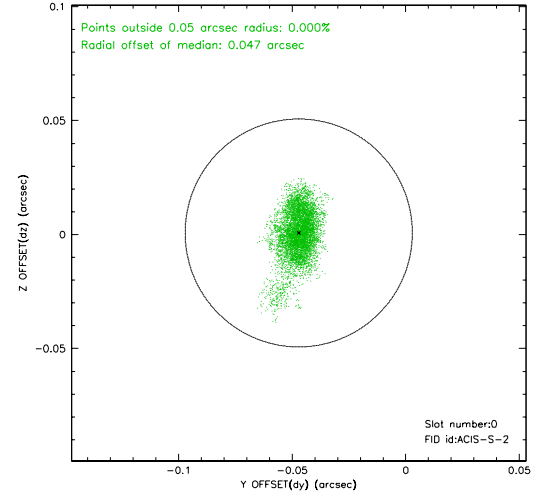
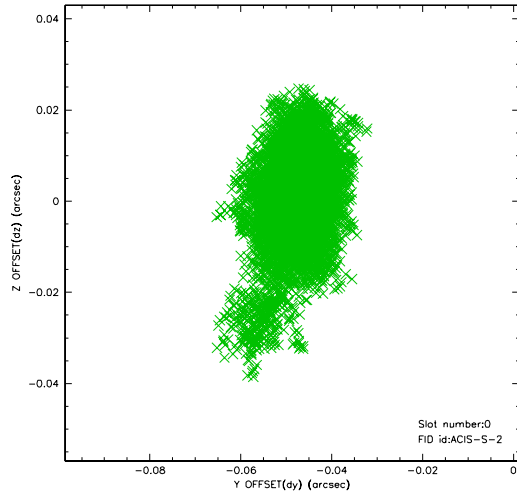


## 2.4.5 Slot 7

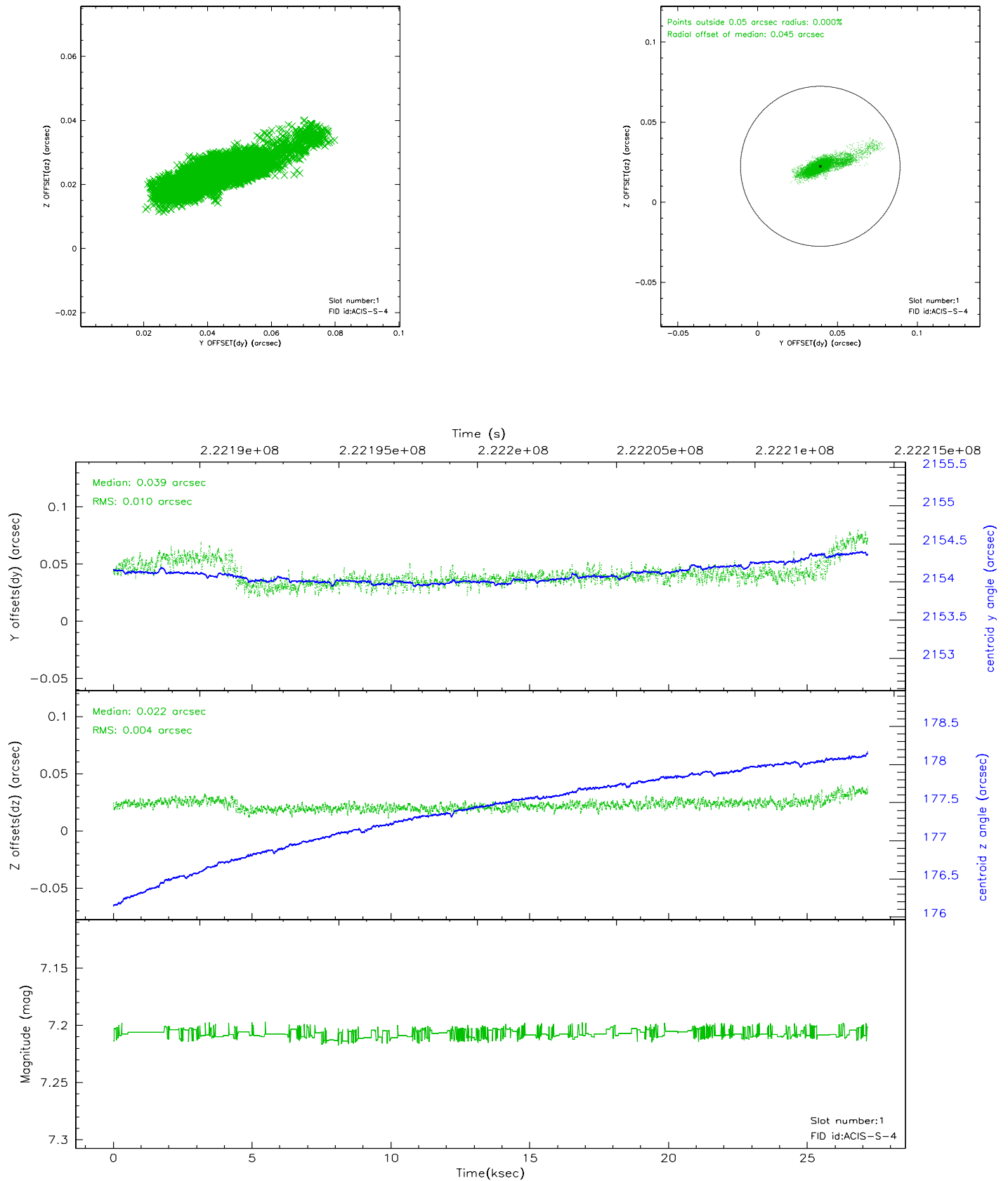


## 2.5 FID Slots

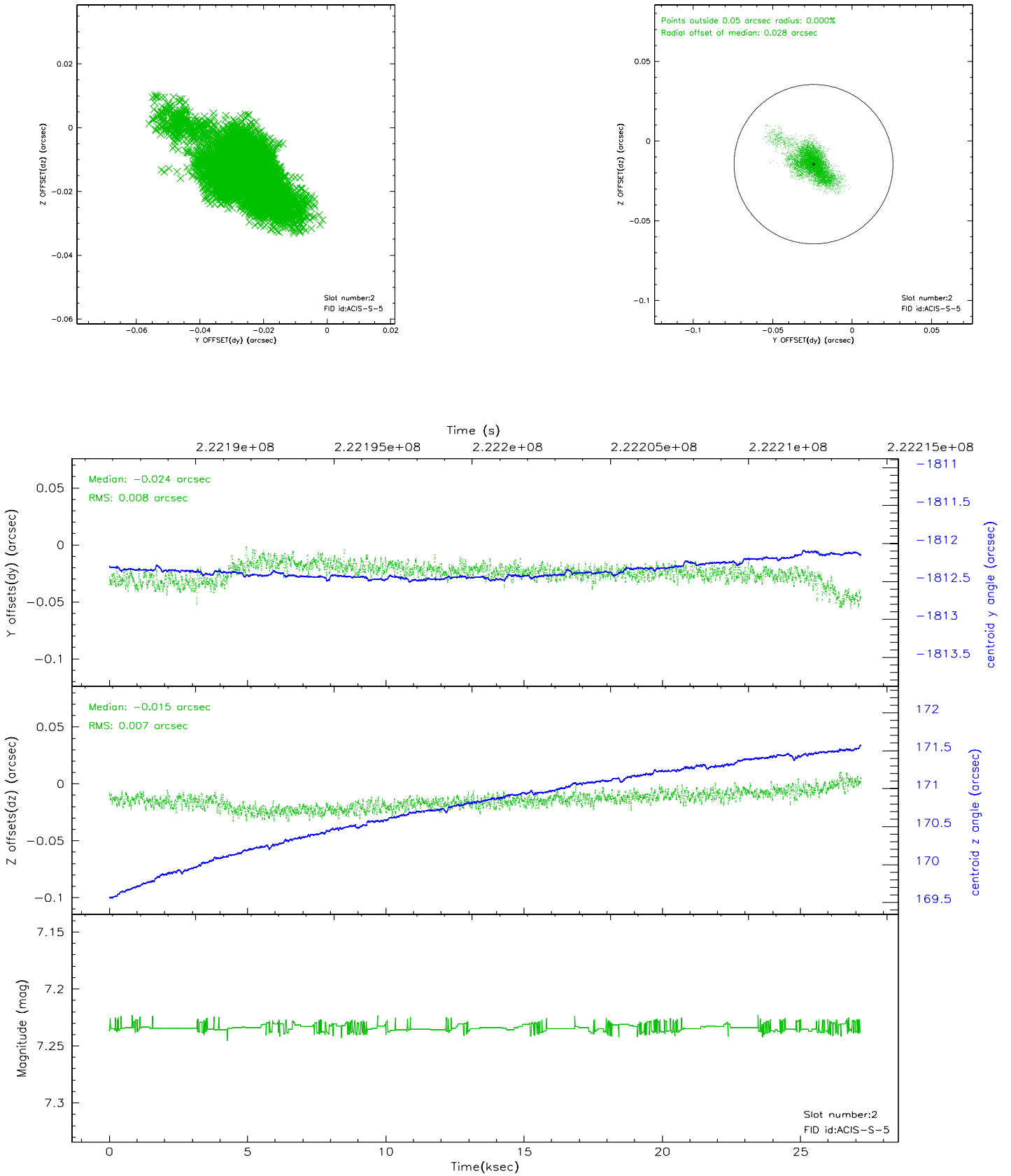
### 2.5.1 Slot 0



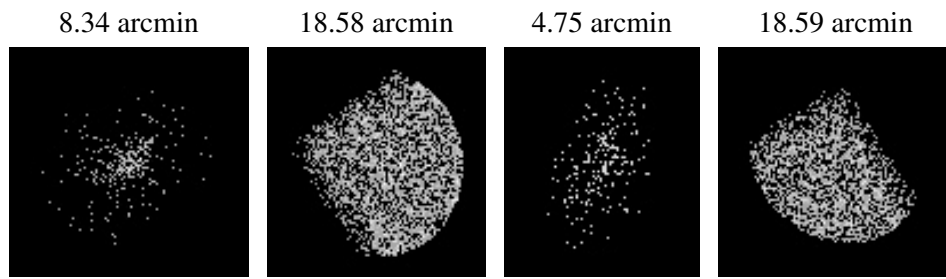
## 2.5.2 Slot 1



### 2.5.3 Slot 2



### 3 Point Sources



## A Summary

### A.1 Status

V&V Scientist	Beth Sundheim
V&V Date (YYYY-MM-DD)	2006.02.17
V&V Edition	1
V&V Disposition and Status	OK
V&V Charge Time	27.18079

### A.2 Comments