

V&V Reference Report

L2 ASCDS Version : 8.5.1.1

Observation 5619 - L2 Version 3
Chandra X-Ray Center

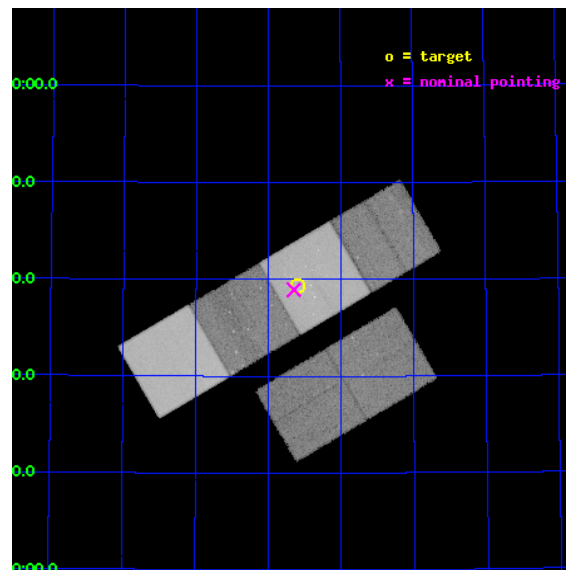
L2 Processing Date : Dec 21 2012

Contents

1	Front	2
2	OBI	3
2.1	OBI	3
2.1.1	Images	3
2.1.2	Bias	3
2.1.3	Parameters	4
2.1.4	Events	4
2.2	Compared Parameters	5
2.3	Aspect	6
2.4	Star Slots	9
2.4.1	Slot 3	9
2.4.2	Slot 4	10
2.4.3	Slot 5	11
2.4.4	Slot 6	12
2.4.5	Slot 7	13
2.5	FID Slots	14
2.5.1	Slot 0	14
2.5.2	Slot 1	15
2.5.3	Slot 2	16
A	Summary	17
A.1	Status	17
A.2	Comments	17

1 Front

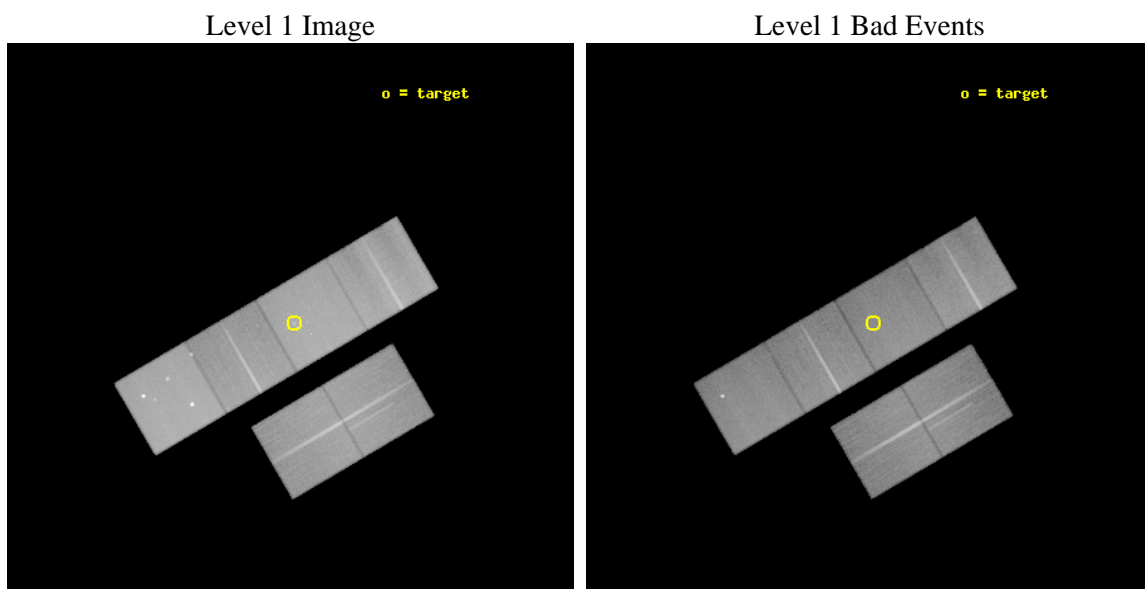
seq_num	701042	Sequence number
obs_id	5619	Observation id
title	The quiescent nucleus and X-ray source population of the nearest giant elliptical galaxy	Proposal title
observer	Prof Christopher Reynolds	Principal investigator
object	Maffei 1	Source name
dtcycle	0	
cycle	P	events from which exps? Prim/Second/Both
ra_targ	39.1475	Observer's specified target RA [deg]
dec_targ	59.655278	Observer's specified target Dec [deg]
ra_nom	39.162086933628	Nominal RA [deg]
dec_nom	59.649010211285	Nominal Dec [deg]
roll_nom	329.66905601329	Nominal Roll [deg]
revision	3	Processing version of data
ontime	55750.399792314	Sum of GTIs [s]
livetime	55044.454661283	Livetime [s]
ontime2	55747.158851951	Sum of GTIs [s]
ontime3	55747.15882203	Sum of GTIs [s]
ontime5	55750.399792314	Sum of GTIs [s]
ontime6	55750.399792314	Sum of GTIs [s]
ontime7	55750.399792314	Sum of GTIs [s]
ontime8	55737.436050683	Sum of GTIs [s]
l2events	675629	Number of level 2 events



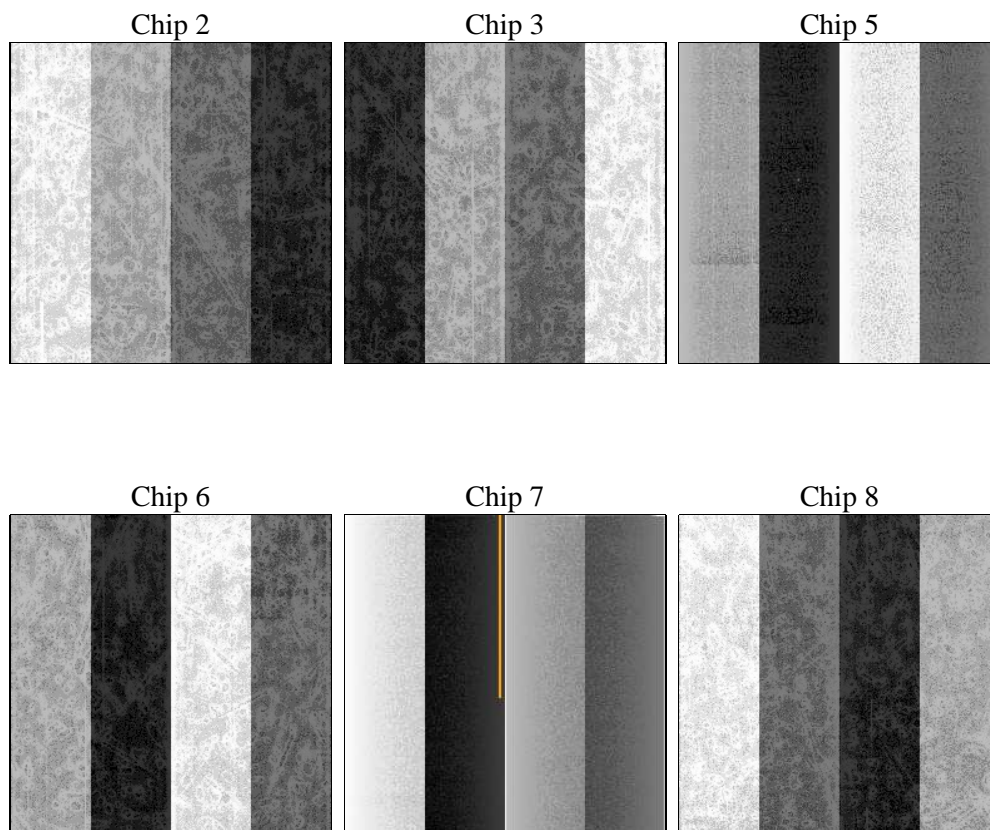
2 OBI

2.1 OBI

2.1.1 Images



2.1.2 Bias



2.1.3 Parameters

obi_num	0	Obi number	sched_exp_time	56000.000000	[s] Scheduled observation exposure time
ascdsver	8.5.1.1	Processing system revision	ontime	55750.399792314	Sum of GTIs [s]
caldsver	4.5.5	 	ontime2	55747.158851951	Sum of GTIs [s]
date	2012-12-21T18:39:22	Date and time of file creation	ontime3	55747.15882203	Sum of GTIs [s]
revision	3	Processing version of data	ontime5	55750.399792314	Sum of GTIs [s]
			ontime6	55750.399792314	Sum of GTIs [s]
			ontime7	55750.399792314	Sum of GTIs [s]
			ontime8	55737.436050683	Sum of GTIs [s]
			l1events	2973970	Number of level 1 events

2.1.4 Events

	ccd 2	ccd 3	ccd 5	ccd 6	ccd 7	ccd 8		ccd 2	ccd 3	ccd 5	ccd 6	ccd 7	ccd 8
level 1 events	416424	398903	639979	420249	572251	526164	grade 0 events	21652	20757	35914	20864	22100	35491
rejected events	367316	350600	342484	369112	331632	411171		5%	5%	5%	4%	3%	6%
rejected %	88%	87%	53%	87%	57%	78%	grade 1 events	252	243	806	227	574	404
								0%	0%	0%	0%	0%	0%
							grade 2 events	10163	9413	89964	10673	48287	25657
								2%	2%	14%	2%	8%	4%
							grade 3 events	4629	4843	11155	4834	21395	12131
								1%	1%	1%	1%	3%	2%
							grade 4 events	4559	4864	10545	4780	21317	11195
								1%	1%	1%	1%	3%	2%
							grade 5 events	16932	18383	47846	18967	54423	25356
								4%	4%	7%	4%	9%	4%
							grade 6 events	8111	8432	149952	9994	127550	30553
								1%	2%	23%	2%	22%	5%
							grade 7 events	350126	331968	293797	349910	276605	385377
								84%	83%	45%	83%	48%	73%

2.2 Compared Parameters

Parameter	Planned	Actual	Parameter	Planned	Actual
Instrument	ACIS	ACIS	Obspar format version number	7	7
Detector	ACIS-235678	ACIS-235678	Obspar file type	PREDICTED	ACTUAL
Grating	NONE	NONE	Obspar update status	NONE	UPDATED
Data mode	FAINT	FAINT	Number of optional ACIS chips dropped	0	0
Observation mode	POINTING	POINTING	On-chip summing requested	N	N
[deg] Pointing RA	39.108179	39.16208693362797	Subarray requested	NONE	NONE
[deg] Pointing Dec	59.648792	59.64901021128499	Alternating exposures requested	N	N
[deg] Pointing Roll	329.558954	329.6690560132915	[s] Primary exposure time	0.000000	3.2
[mm] SIM focus pos	-0.684267	-0.6828225247311905			
[mm] SIM defocus	0	0.001444936568705701			
[mm] SIM translation stage pos	-190.132523	-190.1400660498719			
[mm] SIM translation stage offset	0	0.00754346686406393			
[s] Observation start time (MET)	229022779.184000	229021816.15335			
Observation start date	2005-04-04T17:25:15	2005-04-04T17:10:16			
[s] Observation end time (MET)	229078779.184000	229079897.78099			
Observation end date	2005-04-05T08:58:35	2005-04-05T09:18:17			
Read mode	TIMED	TIMED			

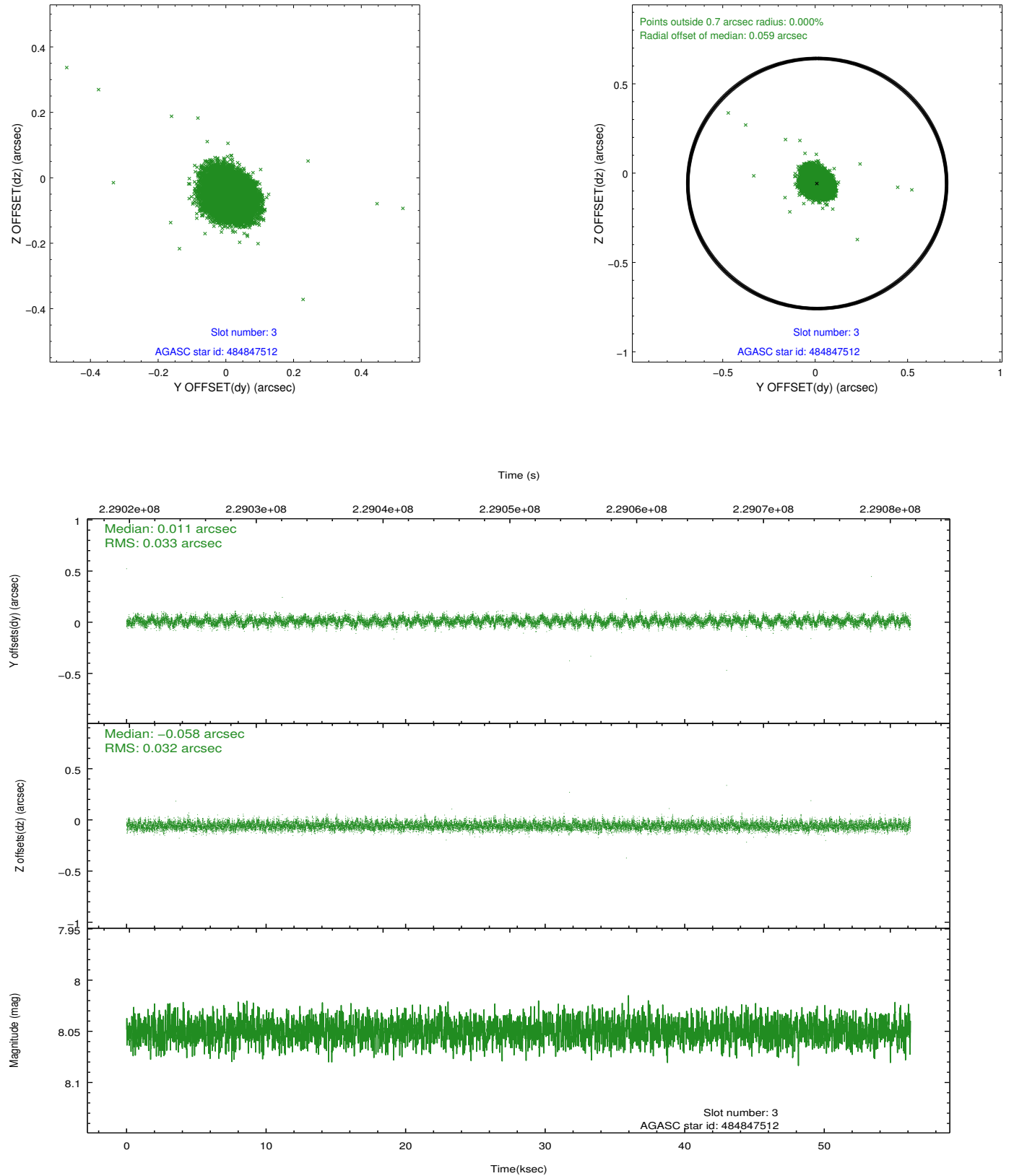
2.3 Aspect

Slot Statistics

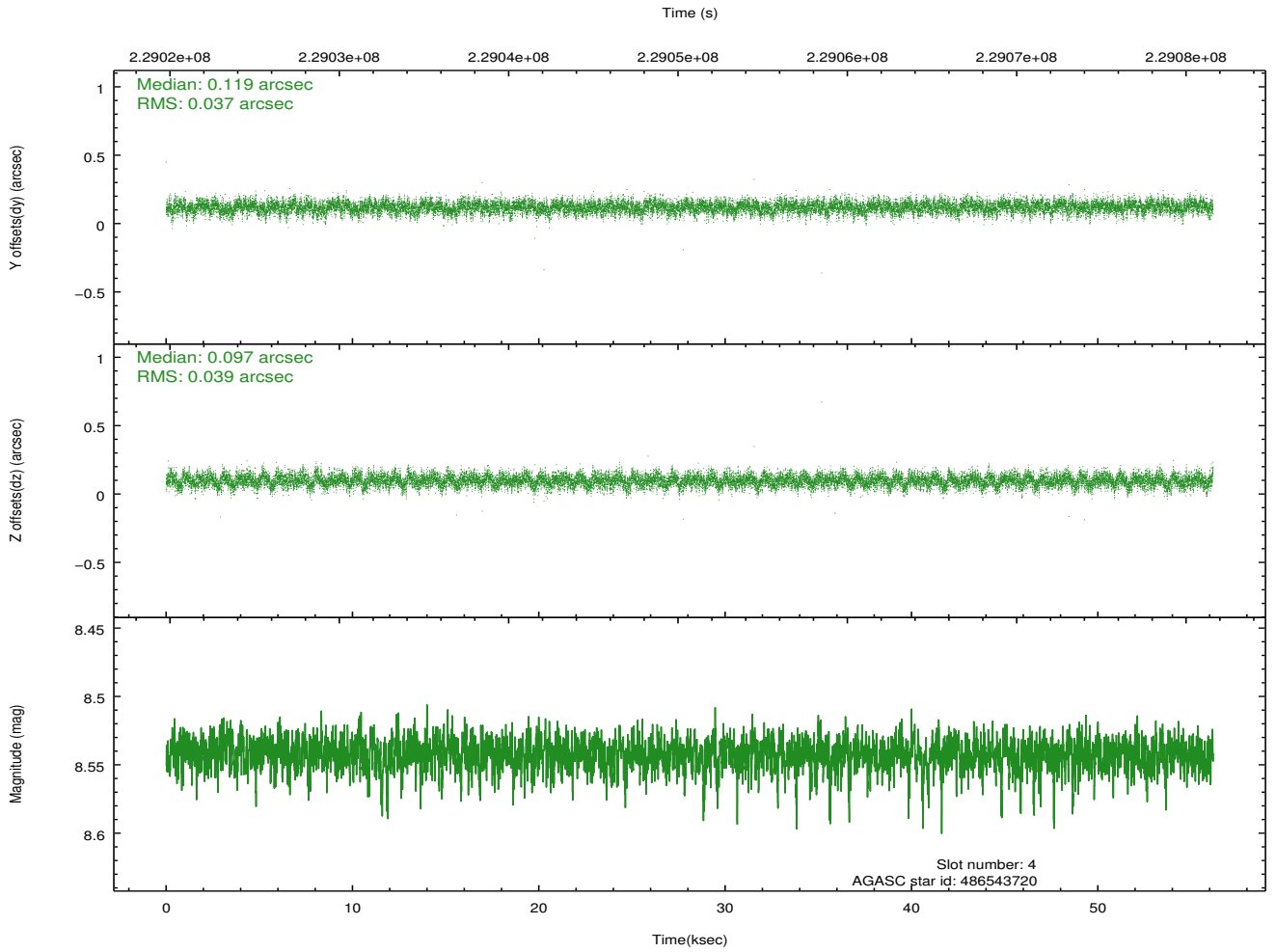
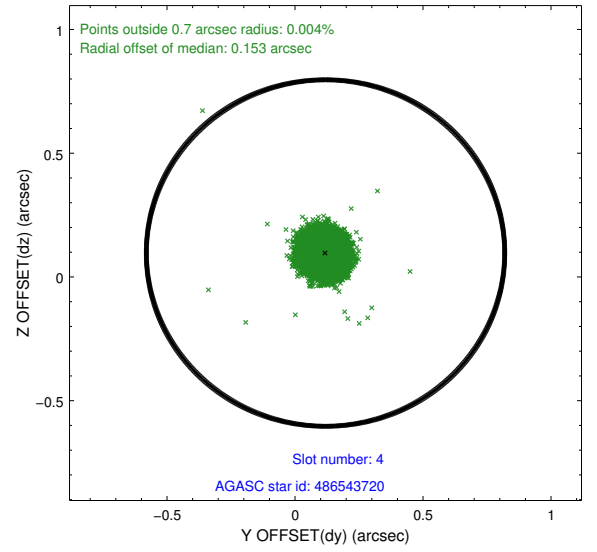
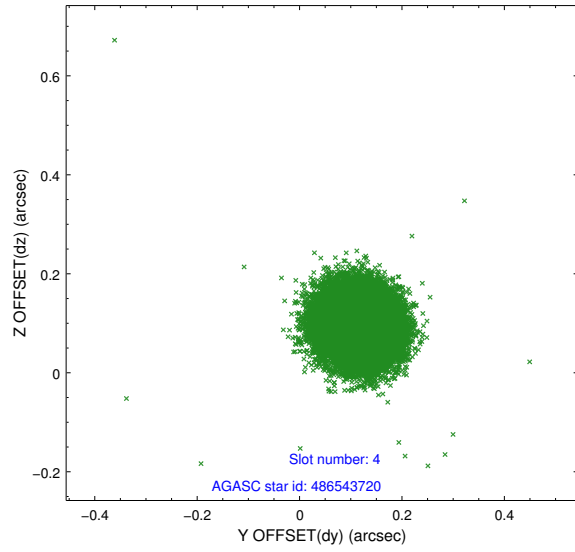
slot	status	id	mag	n_pts	med_dy	med_dz	dr1	dr2	ra	dec	mean_y	mean_z
0	FID	ACIS-S-2	7.10	13703	-0.038	-0.020	0.006	0.011	0.000000	0.000000	-760.06	-1733.51
1	FID	ACIS-S-4	7.20	13704	0.057	0.009	0.006	0.010	0.000000	0.000000	2153.32	175.04
2	FID	ACIS-S-6	7.34	13704	-0.047	0.018	0.007	0.012	0.000000	0.000000	401.86	812.41
3	GUIDE	484847512	8.05	27408	0.011	-0.058	0.048	0.077	39.067323	59.168888	810.66	-1527.43
4	GUIDE	486543720	8.54	27401	0.119	0.097	0.057	0.092	40.326251	59.714594	1776.33	1342.57
5	GUIDE	530319224	8.04	27405	-0.085	0.080	0.061	0.101	38.417784	60.290735	-2236.06	1373.98
6	GUIDE	530450832	7.15	27402	-0.046	0.023	0.057	0.089	39.358868	60.088437	-414.49	1593.53
7	GUIDE	484848536	8.54	27400	0.000	-0.142	0.075	0.118	38.499242	59.182256	-119.57	-2012.46

2.4 Star Slots

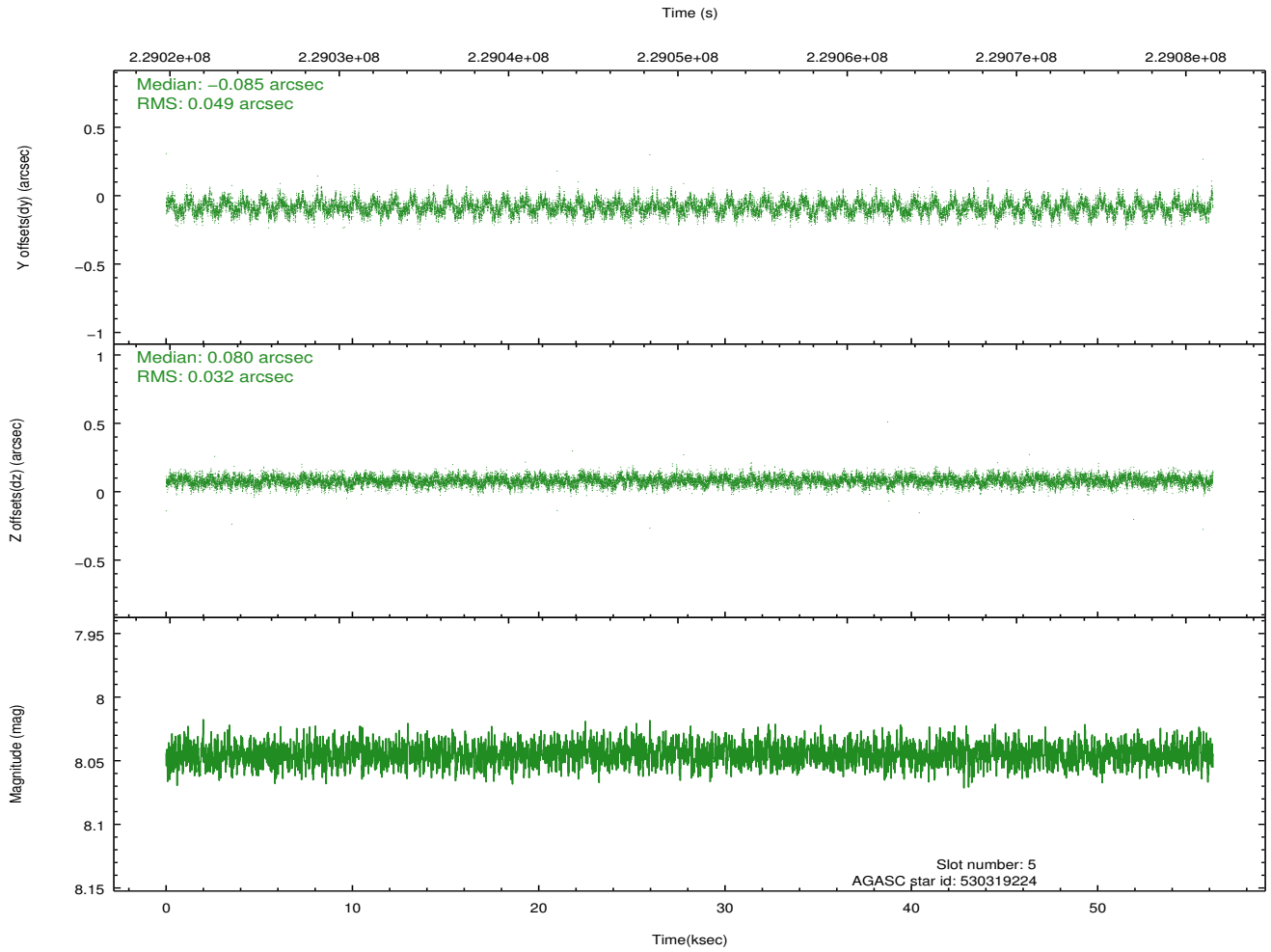
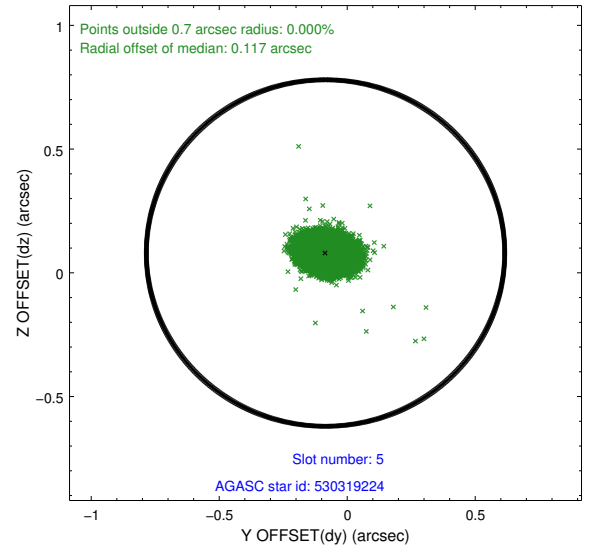
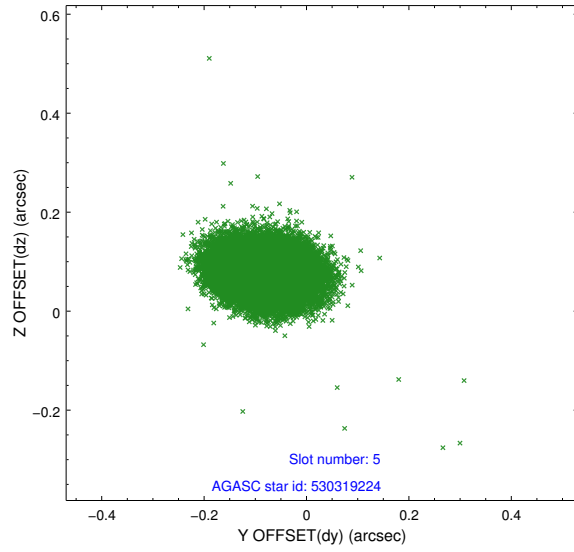
2.4.1 Slot 3



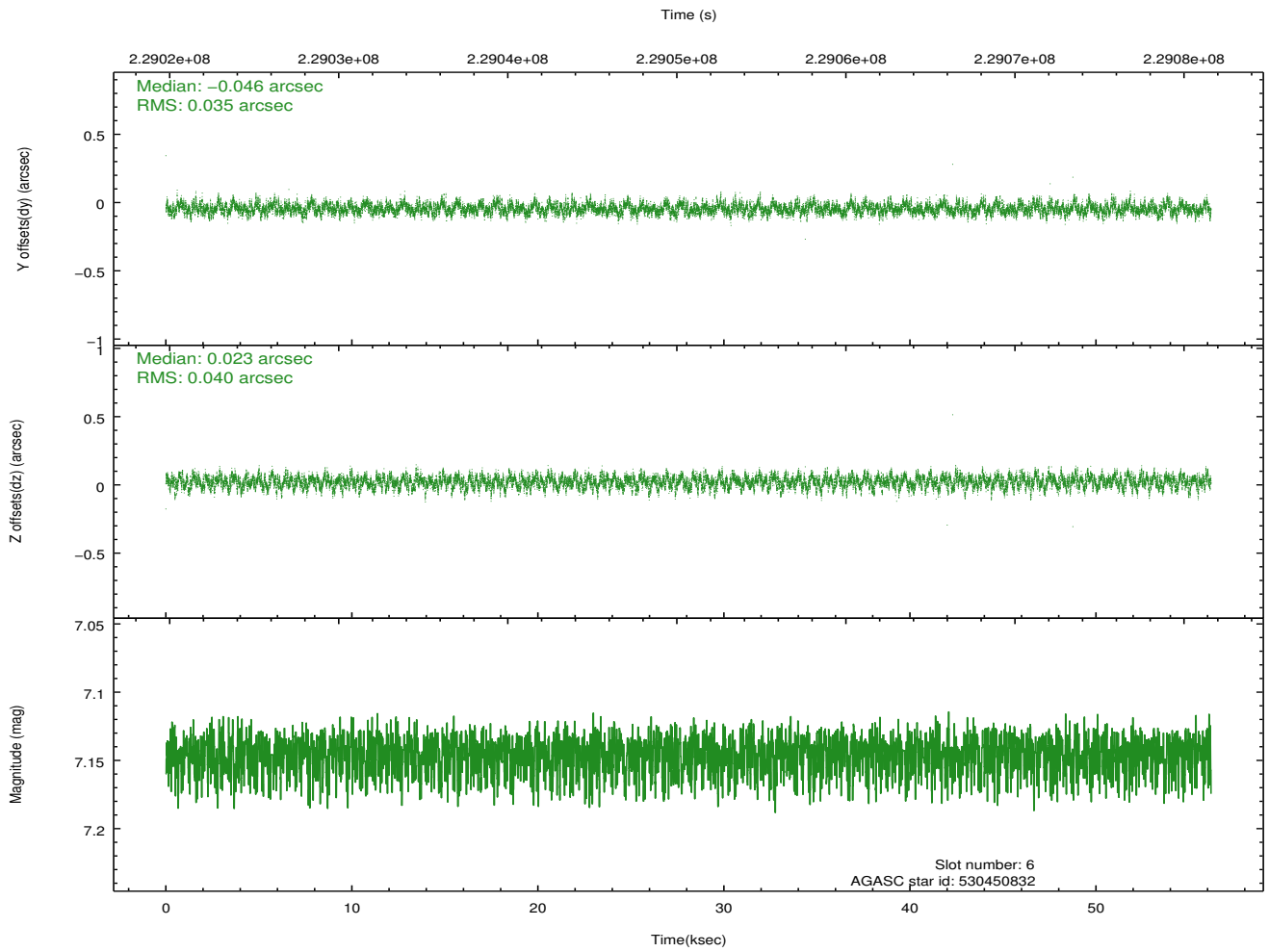
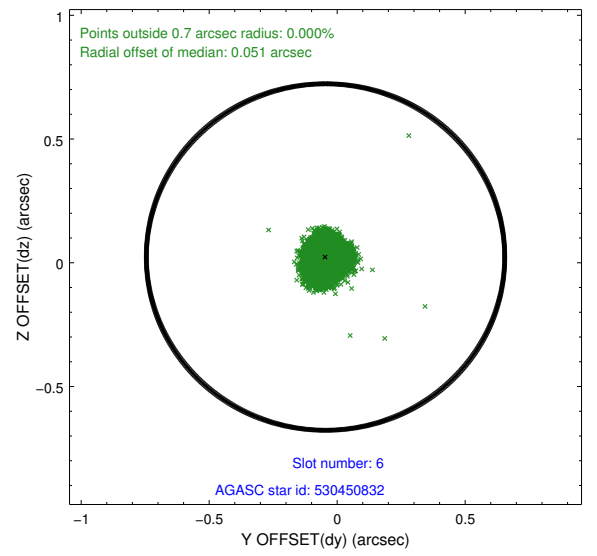
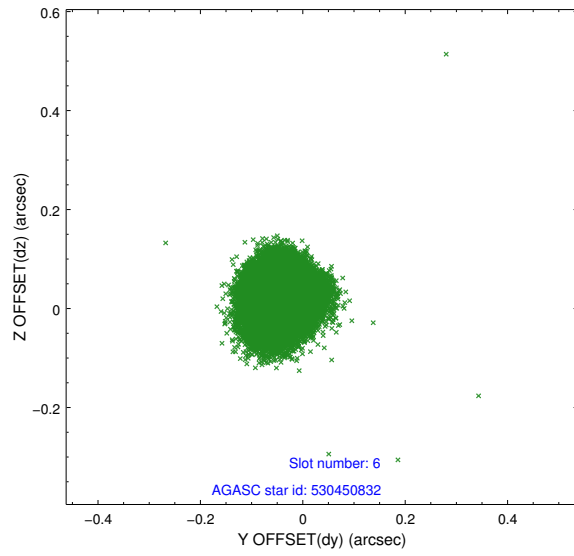
2.4.2 Slot 4



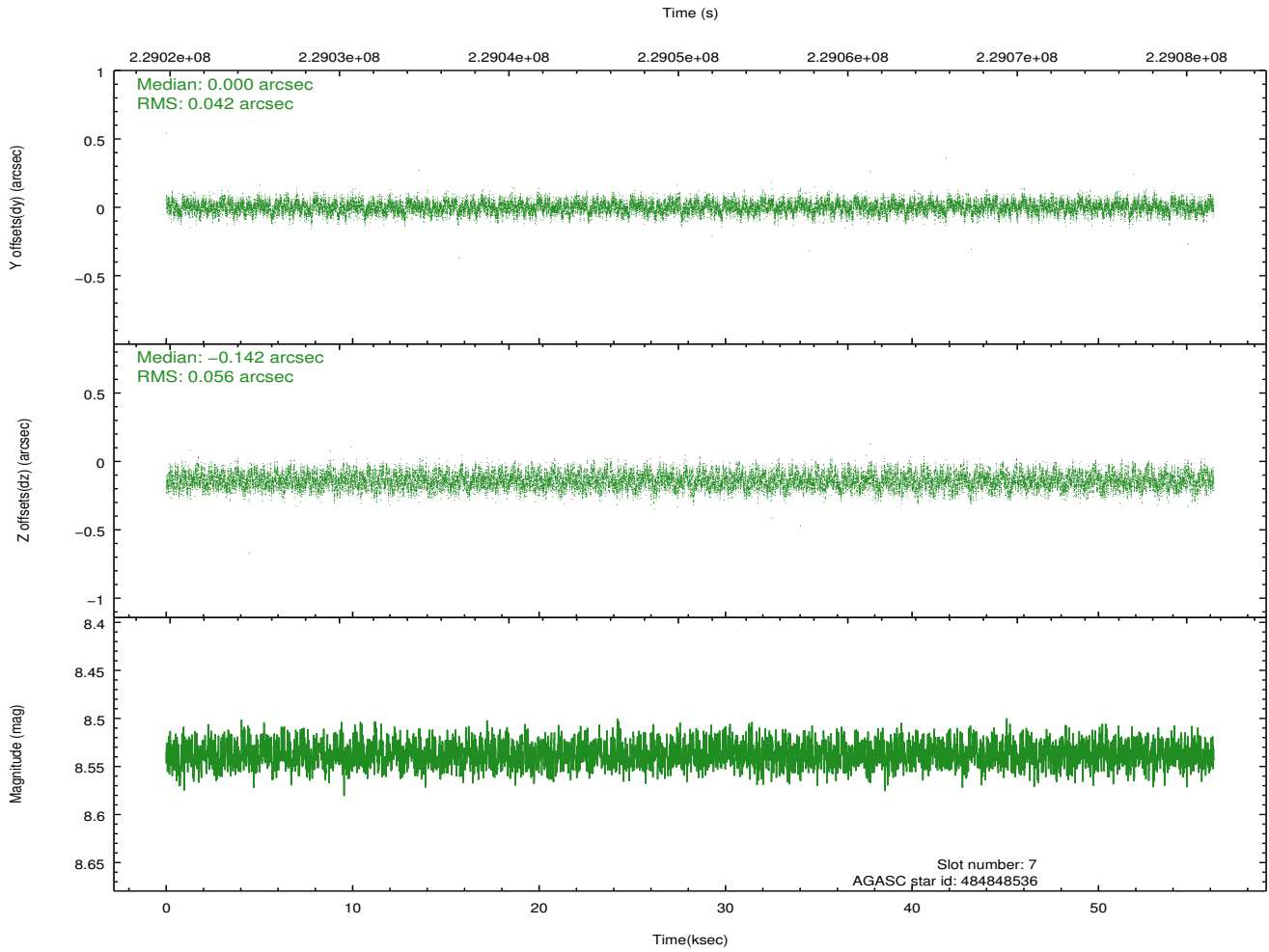
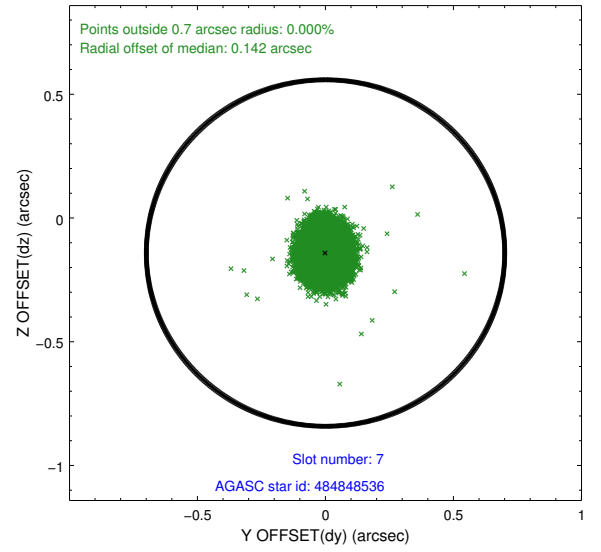
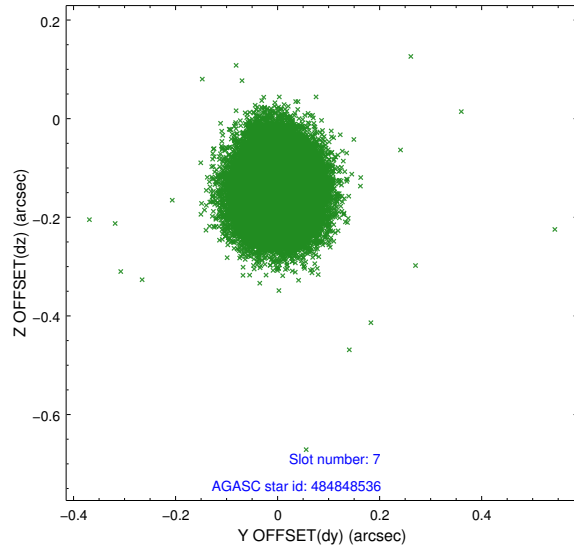
2.4.3 Slot 5



2.4.4 Slot 6

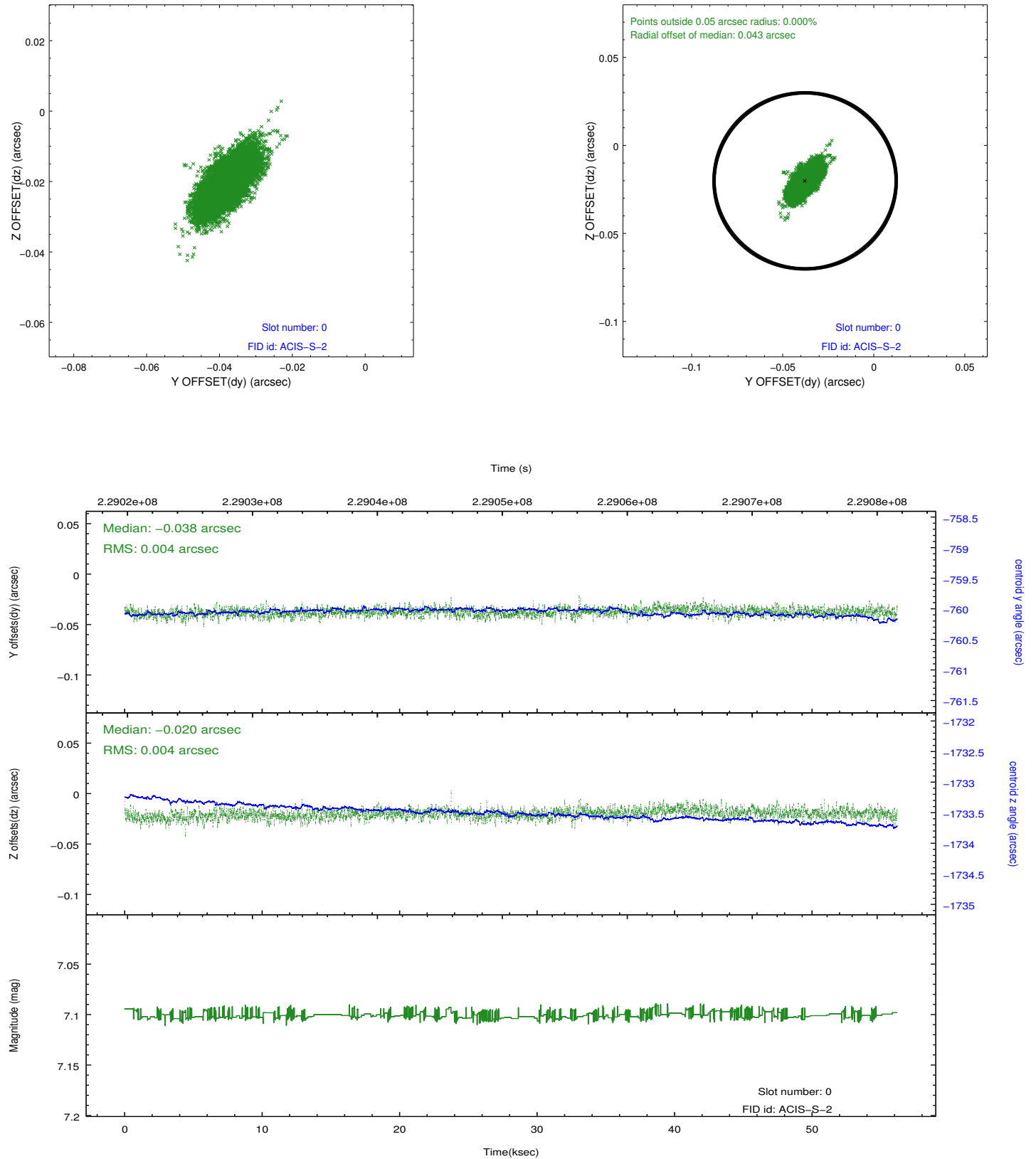


2.4.5 Slot 7

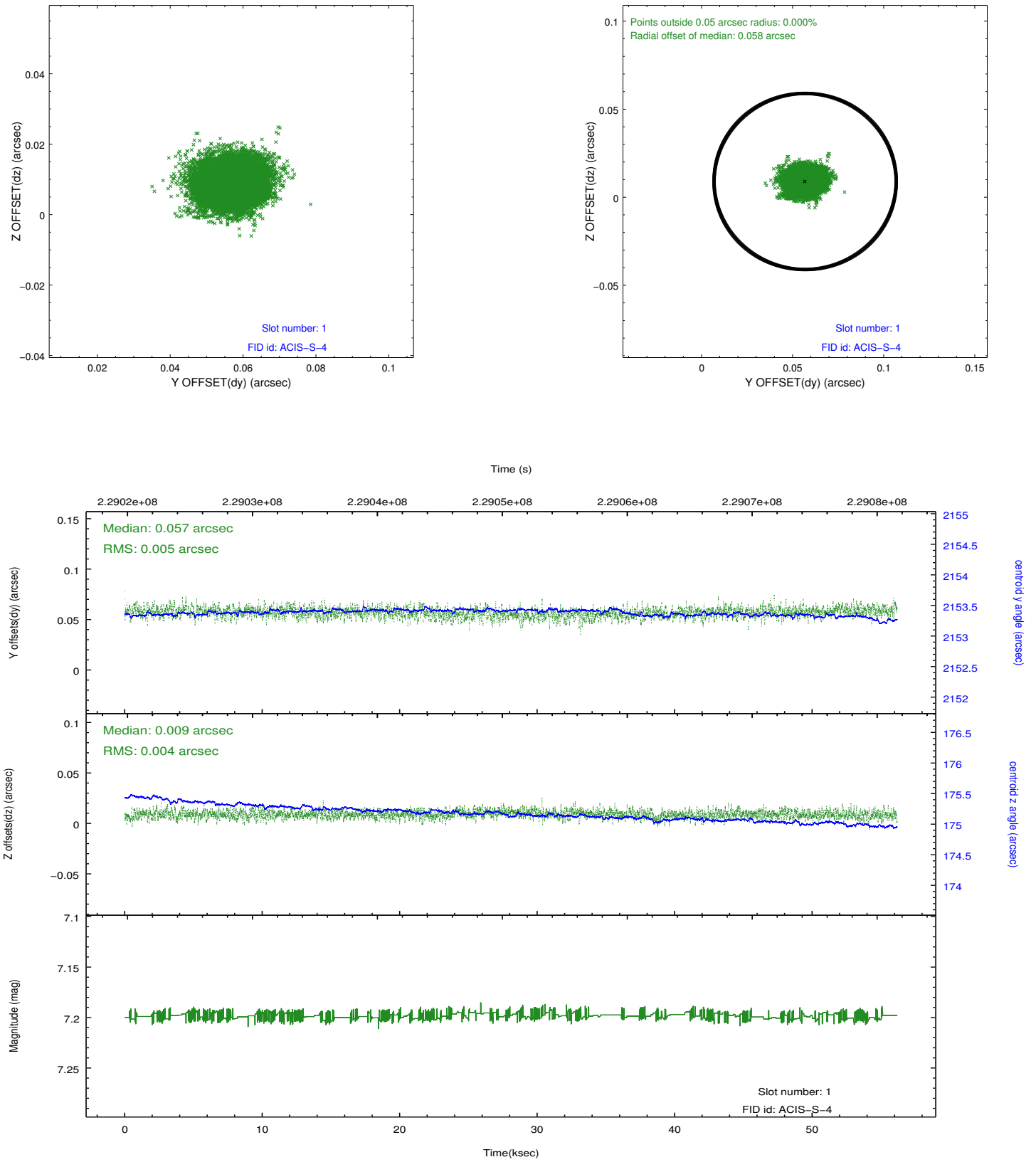


2.5 FID Slots

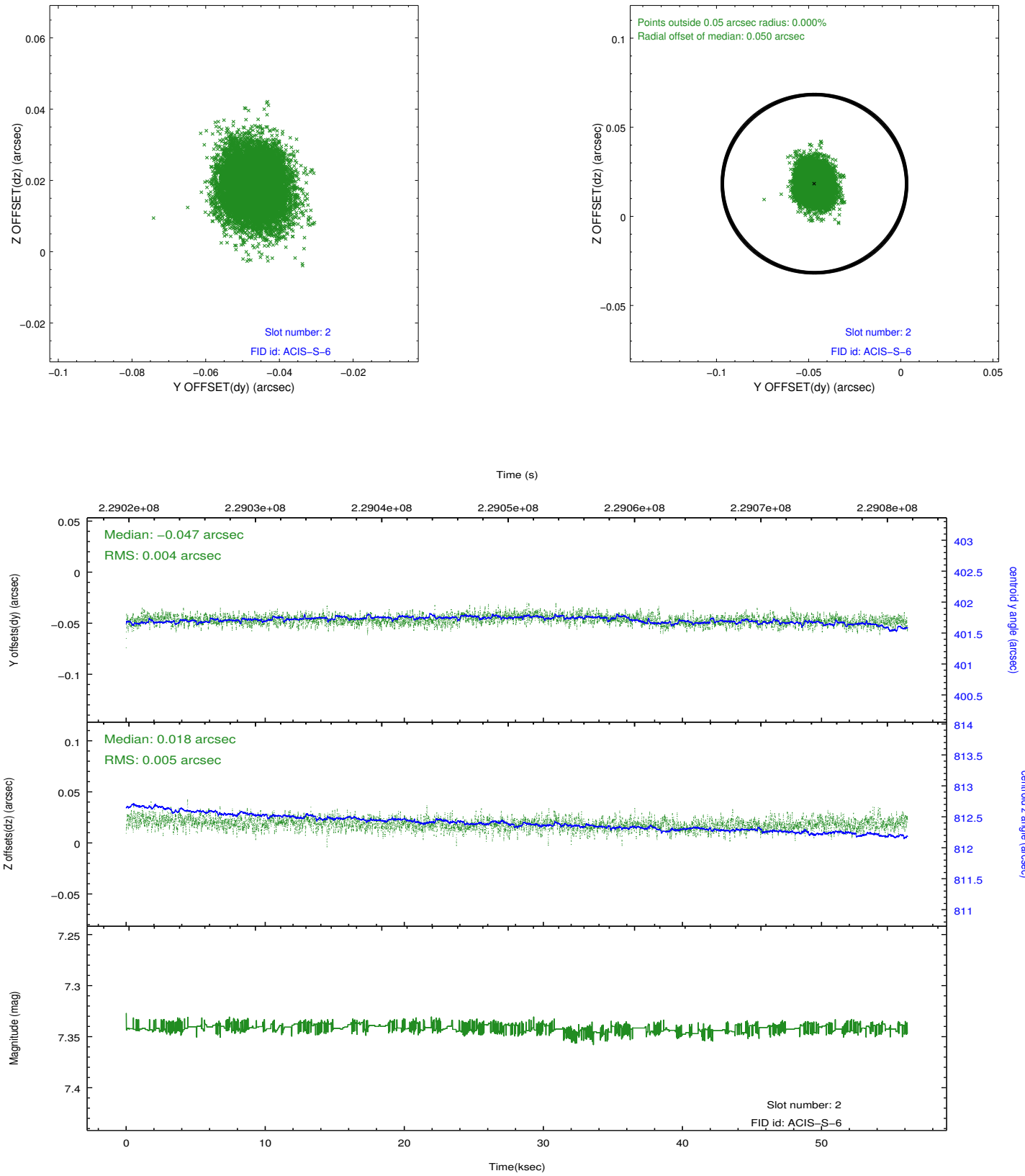
2.5.1 Slot 0



2.5.2 Slot 1



2.5.3 Slot 2



A Summary

A.1 Status

V&V Scientist	Jen Lauer
V&V Date (YYYY-MM-DD)	2013.01.14
V&V Edition	1
V&V Disposition and Status	OK
V&V Charge Time	55.75039

A.2 Comments