

# V&V Reference Report

## L2 ASCDS Version : 7.6.7.1

Observation 5607 - L2 Version 002  
Chandra X-Ray Center

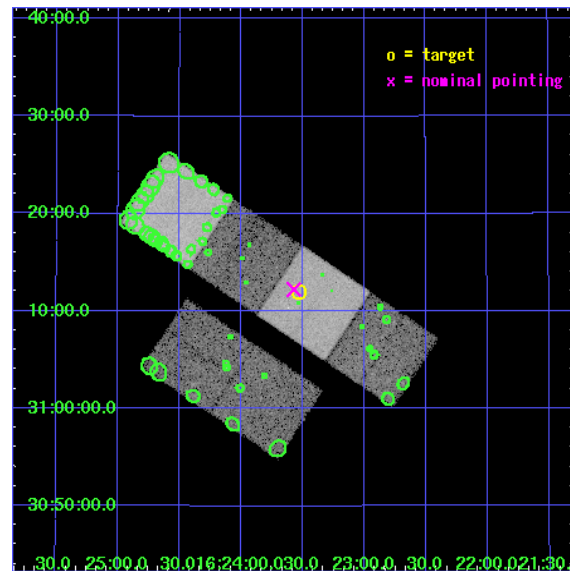
L2 Processing Date : Apr 7 2006

## Contents

<b>1</b>	<b>Front</b>	<b>2</b>
<b>2</b>	<b>OBI</b>	<b>3</b>
2.1	OBI . . . . .	3
2.1.1	Images . . . . .	3
2.1.2	Bias . . . . .	3
2.1.3	Parameters . . . . .	4
2.1.4	Events . . . . .	4
2.2	Compared Parameters . . . . .	5
2.3	Aspect . . . . .	6
2.4	Star Slots . . . . .	9
2.4.1	Slot 3 . . . . .	9
2.4.2	Slot 4 . . . . .	10
2.4.3	Slot 5 . . . . .	11
2.4.4	Slot 6 . . . . .	12
2.4.5	Slot 7 . . . . .	13
2.5	FID Slots . . . . .	14
2.5.1	Slot 0 . . . . .	14
2.5.2	Slot 1 . . . . .	15
2.5.3	Slot 2 . . . . .	16
<b>3</b>	<b>Point Sources</b>	<b>17</b>
<b>A</b>	<b>Summary</b>	<b>18</b>
A.1	Status . . . . .	18
A.2	Comments . . . . .	18

# 1 Front

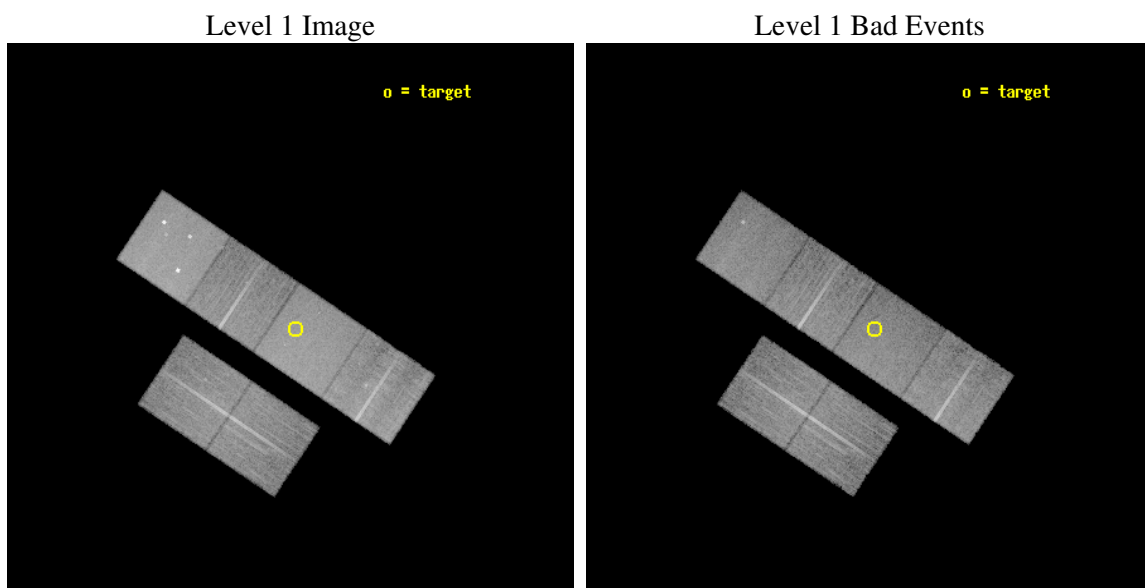
seq_num	701030
obs_id	5607
title	A Chandra Survey of the Most Distant Quasars: X-raying the First Massive Black Holes
observer	Prof. William Brandt
object	SDSS J1623+3112
dtcycle	0
cycle	P
ra_targ	245.8825
dec_targ	31.200139
ra_nom	245.89282037247
dec_nom	31.204006110857
roll_nom	33.78427739514
revision	2
ontime	17433.599935055
livetime	17212.845195424
ontime2	17433.599935055
ontime3	17433.599935055
ontime5	17433.599935055
ontime6	17433.599935055
ontime7	17433.599935055
ontime8	17433.599935055
l2events	199701



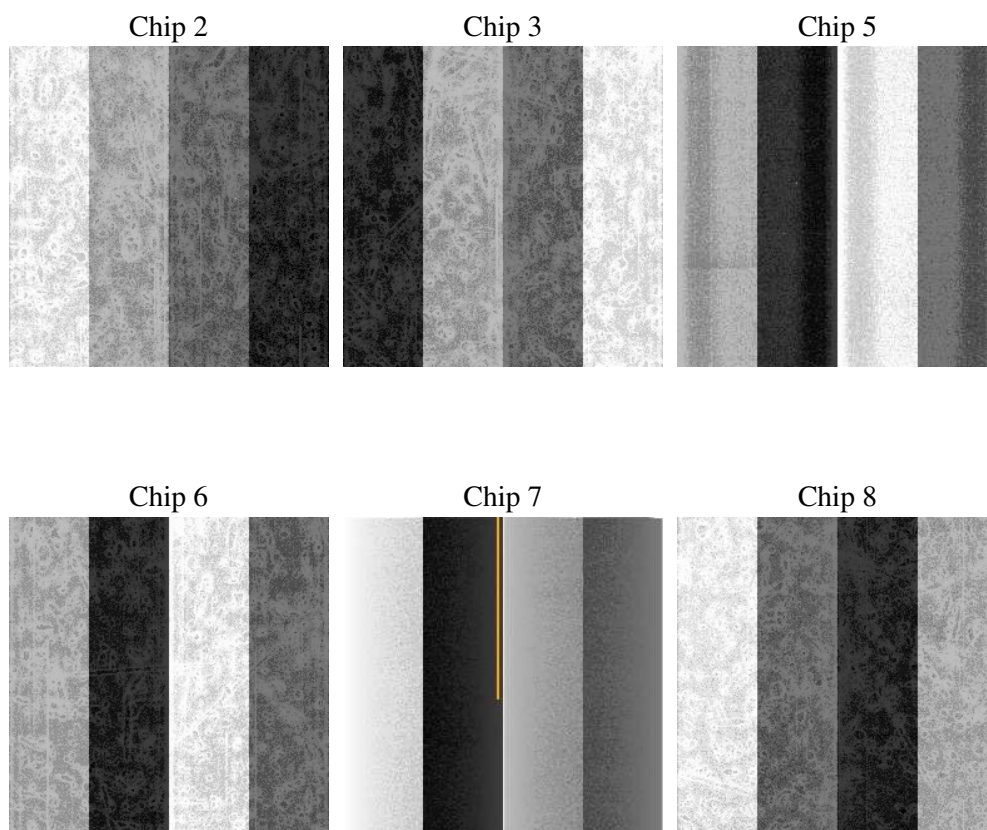
## 2 OBI

### 2.1 OBI

#### 2.1.1 Images



#### 2.1.2 Bias



### 2.1.3 Parameters

obi_num	0
ascdsver	7.6.7.1
caldsver	3.2.1
date	2006-04-07T15:13:41
revision	2

sched_exp_time	17300.025000
ontime	18100.990665823
ontime2	18100.990665823
ontime3	18100.990665823
ontime5	18100.990665823
ontime6	18100.990665823
ontime7	18100.990665823
ontime8	18100.990665823
l1events	950899

### 2.1.4 Events

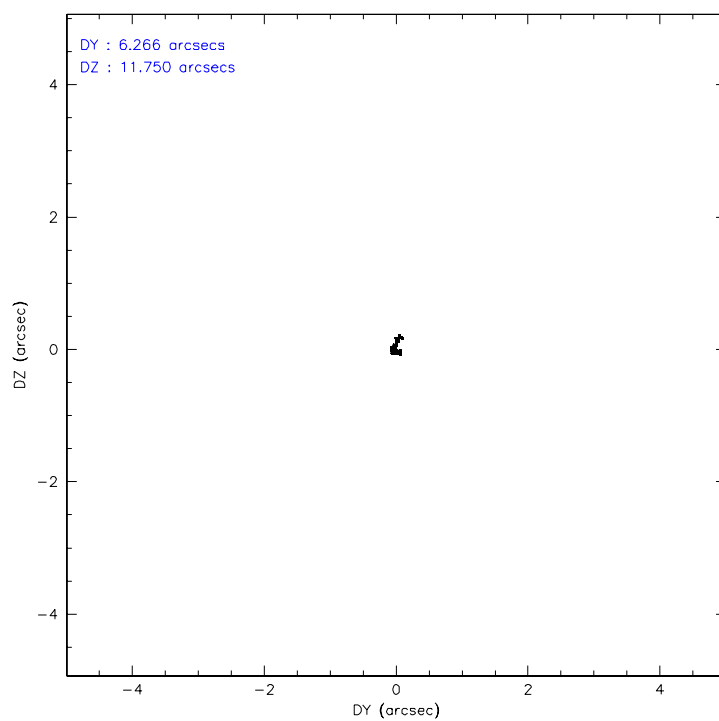
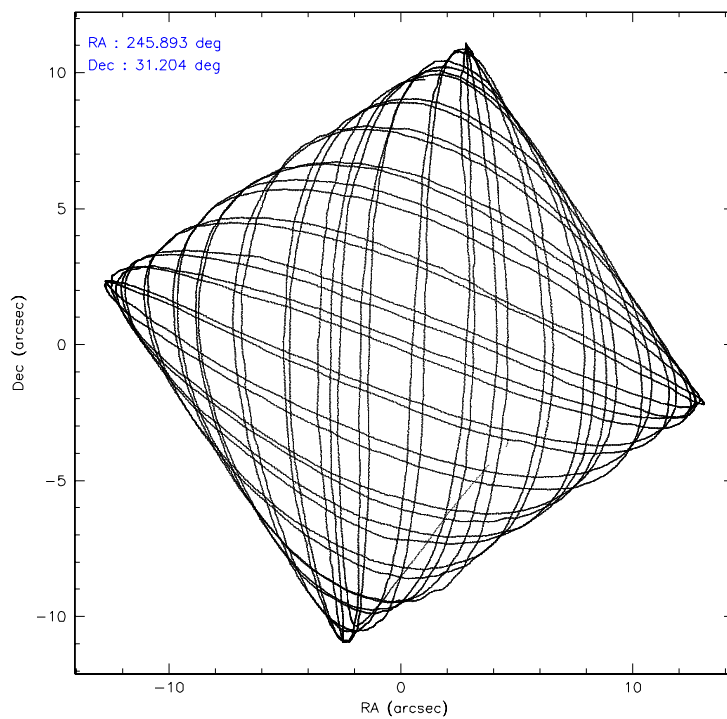
	ccd 2	ccd 3	ccd 5	ccd 6	ccd 7	ccd 8
level 1 events	137576	130674	203207	133993	178843	166606
rejected events	121703	115753	114826	118497	113070	131380
rejected %	88%	88%	56%	88%	63%	78%

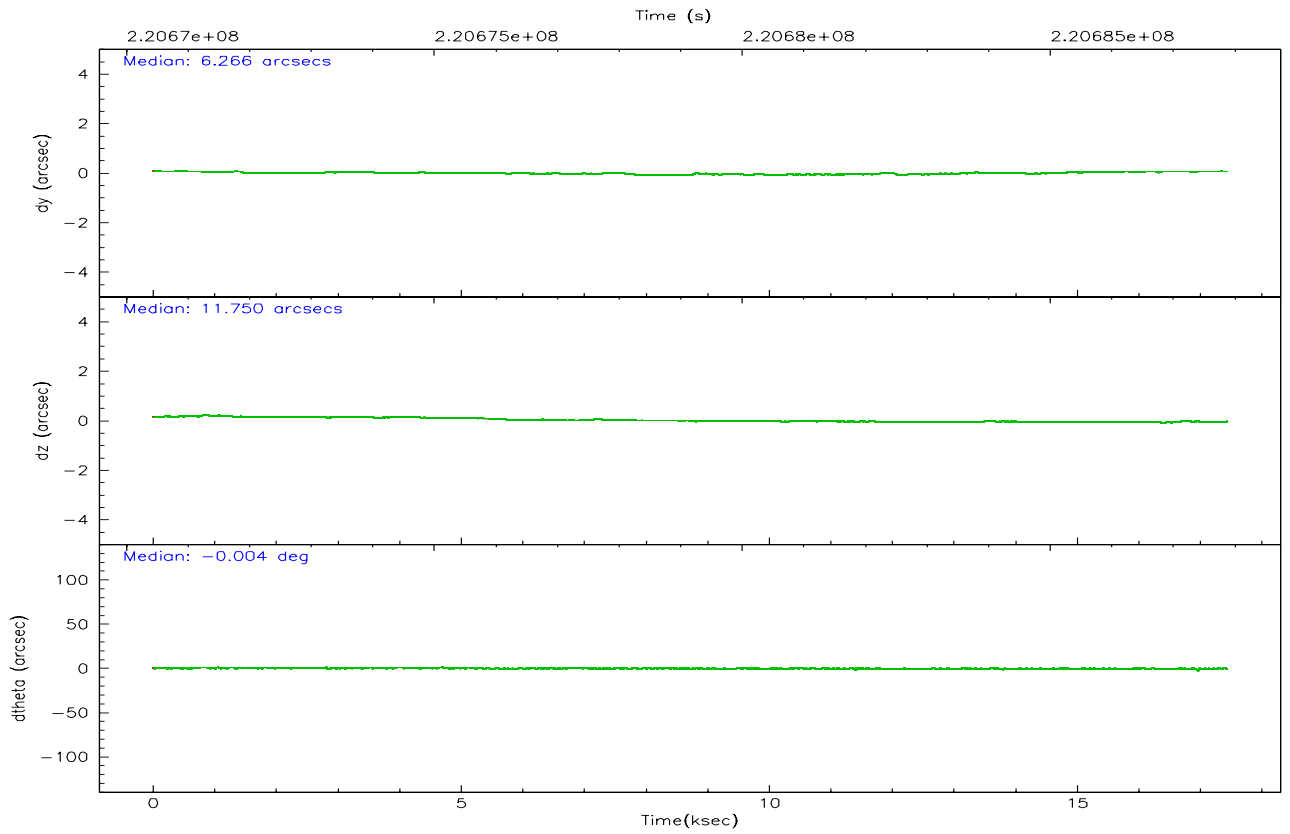
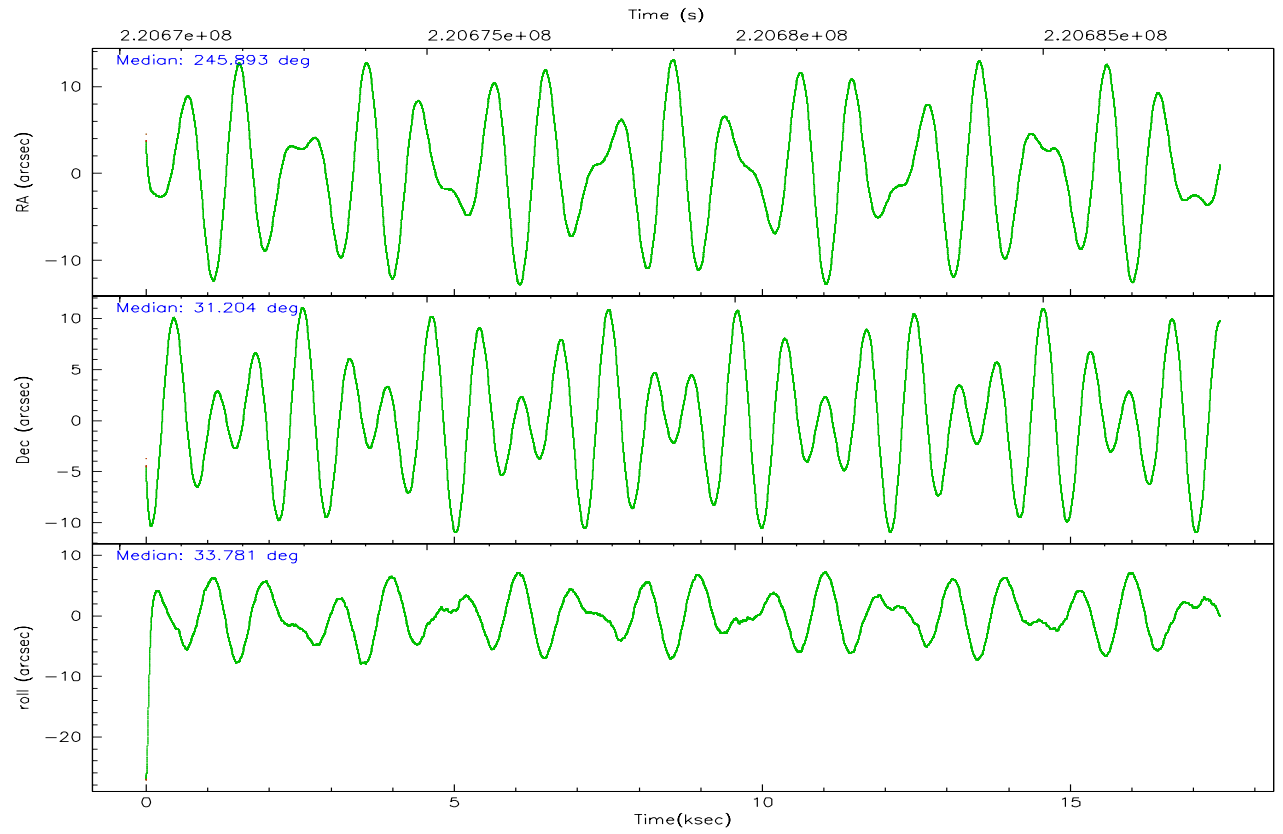
	ccd 2	ccd 3	ccd 5	ccd 6	ccd 7	ccd 8
grade 0 events	7571	6752	8984	6333	3981	12179
	5%	5%	4%	4%	2%	7%
grade 1 events	85	100	173	74	116	99
	0%	0%	0%	0%	0%	0%
grade 2 events	3301	3017	29421	3442	17022	8001
	2%	2%	14%	2%	9%	4%
grade 3 events	1511	1499	1914	1537	3433	3810
	1%	1%	0%	1%	1%	2%
grade 4 events	1455	1505	1800	1541	3337	3653
	1%	1%	0%	1%	1%	2%
grade 5 events	5248	5924	9588	6168	12044	7992
	3%	4%	4%	4%	6%	4%
grade 6 events	2682	2750	49771	3202	40487	9056
	1%	2%	24%	2%	22%	5%
grade 7 events	115723	109127	101556	111696	98423	121816
	84%	83%	49%	83%	55%	73%

## 2.2 Compared Parameters

Parameter	Planned	Actual	Parameter	Planned	Actual
Instrument	ACIS	ACIS	Obspar format version number	6	6
Detector	ACIS-235678	ACIS-235678	Obspar file type	PREDICTED	ACTUAL
Grating	NONE	NONE	Obspar update status	NONE	UPDATED
Data mode	FAINT	FAINT	On-chip summing requested	N	N
Observation mode	POINTING	POINTING	Subarray requested	NONE	NONE
Pointing RA	245.879179	245.8928203724683	Alternating exposures requested	N	N
Pointing Dec	31.179432	31.20400611085726	Primary exposure time	0.000000	3.2
Pointing Roll	33.634733	33.7842773951404			
SIM focus pos (mm)	-0.684267	-0.6828225247311905			
SIM defocus (mm)	0	0.001444936568705701			
SIM translation stage pos (mm)	-190.132523	-190.1425803651734			
SIM translation stage offset (mm)	0	0.01005778216563158			
Observation start time	220670566.184000	220669187.12548			
Observation start date	2004-12-29T01:21:42	2004-12-29T00:59:47			
Observation end time	220687866.184000	220688094.27634			
Observation end date	2004-12-29T06:10:02	2004-12-29T06:14:54			
Read mode	TIMED	TIMED			

## 2.3 Aspect





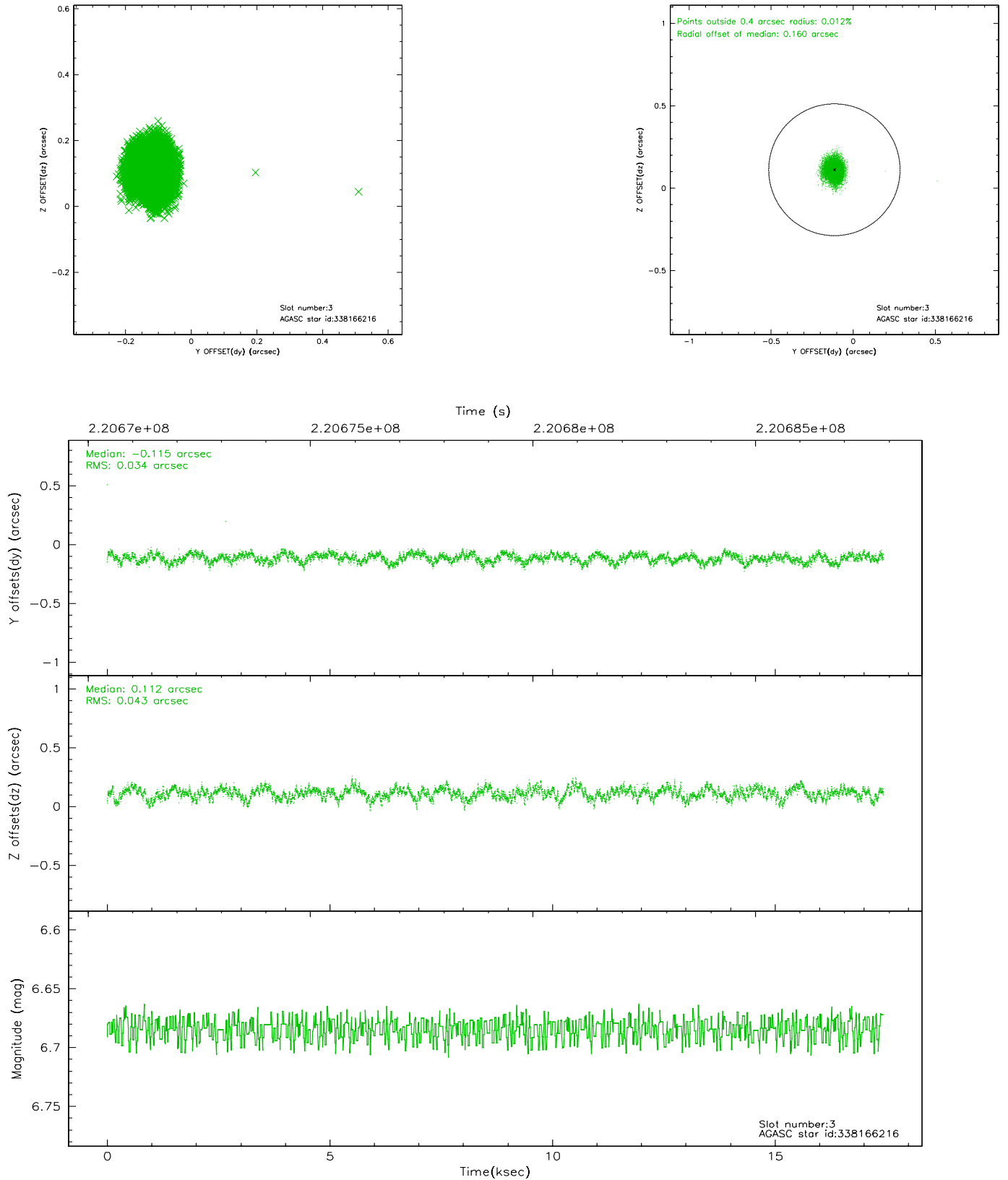
### Slot Statistics

slot	status	id	mag	n_pts	med_dy	med_dz	dr1	dr2	ra	dec	mean_y	mean_z
0	FID	ACIS-S-1	7.19	4254	0.003	-0.066	0.007	0.012	0.000000	0.000000	937.00	-1728.75
1	FID	ACIS-S-4	7.20	4254	0.018	0.049	0.007	0.011	0.000000	0.000000	2154.59	175.26
2	FID	ACIS-S-5	7.23	4254	-0.047	0.030	0.005	0.009	0.000000	0.000000	-1811.58	169.17
3	GUIDE	338166216	6.68	8508	-0.115	0.112	0.059	0.091	245.771275	30.850165	-933.93	-801.93
4	GUIDE	338172392	9.47	8504	0.129	0.023	0.092	0.150	245.989373	30.613871	-843.26	-1884.25
5	GUIDE	338172952	9.71	8506	0.109	-0.109	0.122	0.209	245.483205	31.208640	-955.40	764.37
6	GUIDE	338310040	8.56	8505	-0.227	-0.083	0.063	0.102	246.276928	31.741209	2135.20	1011.39
7	GUIDE	338298824	9.62	8506	0.099	0.059	0.135	0.215	246.080341	32.075763	2299.09	2347.63

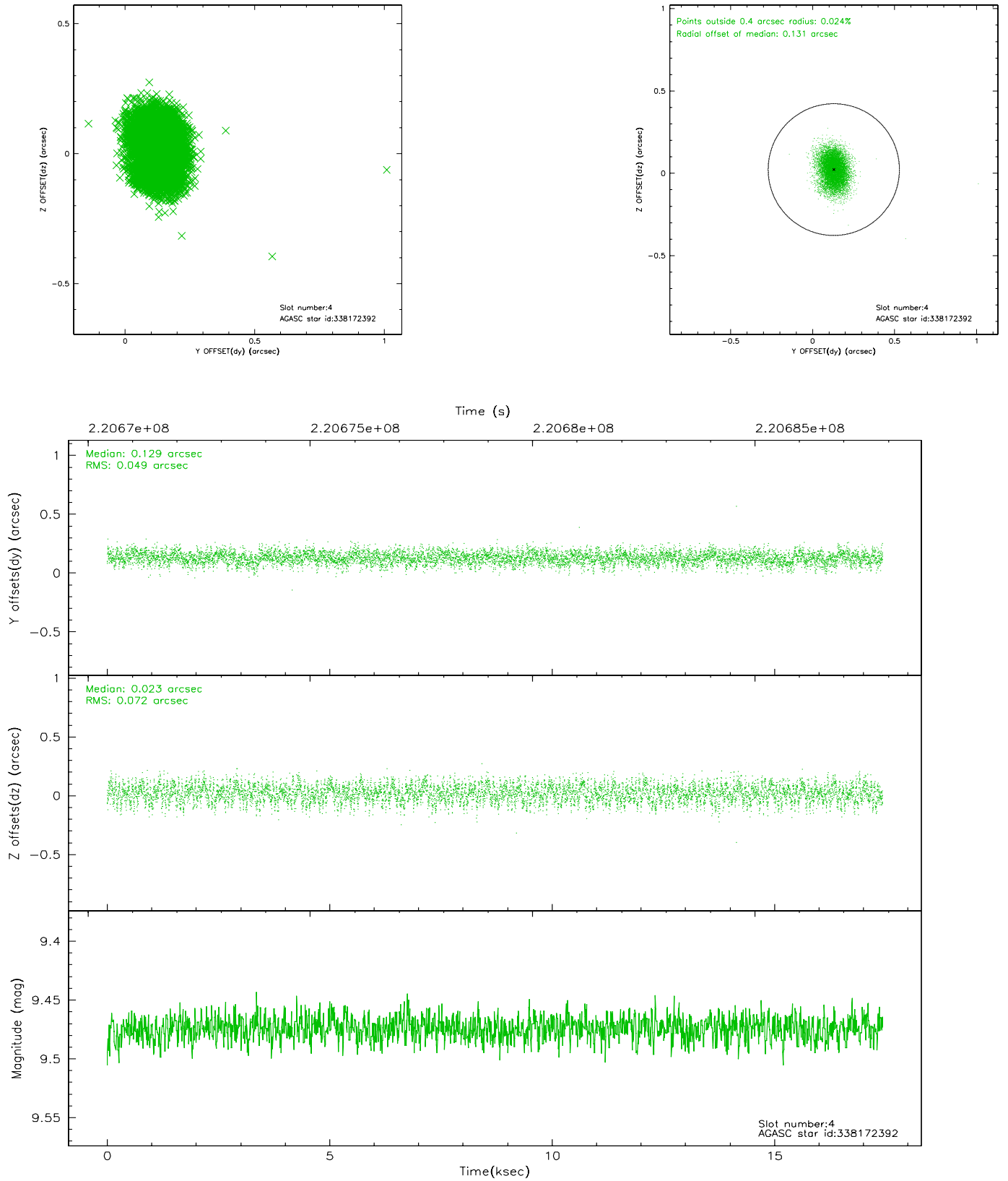


## 2.4 Star Slots

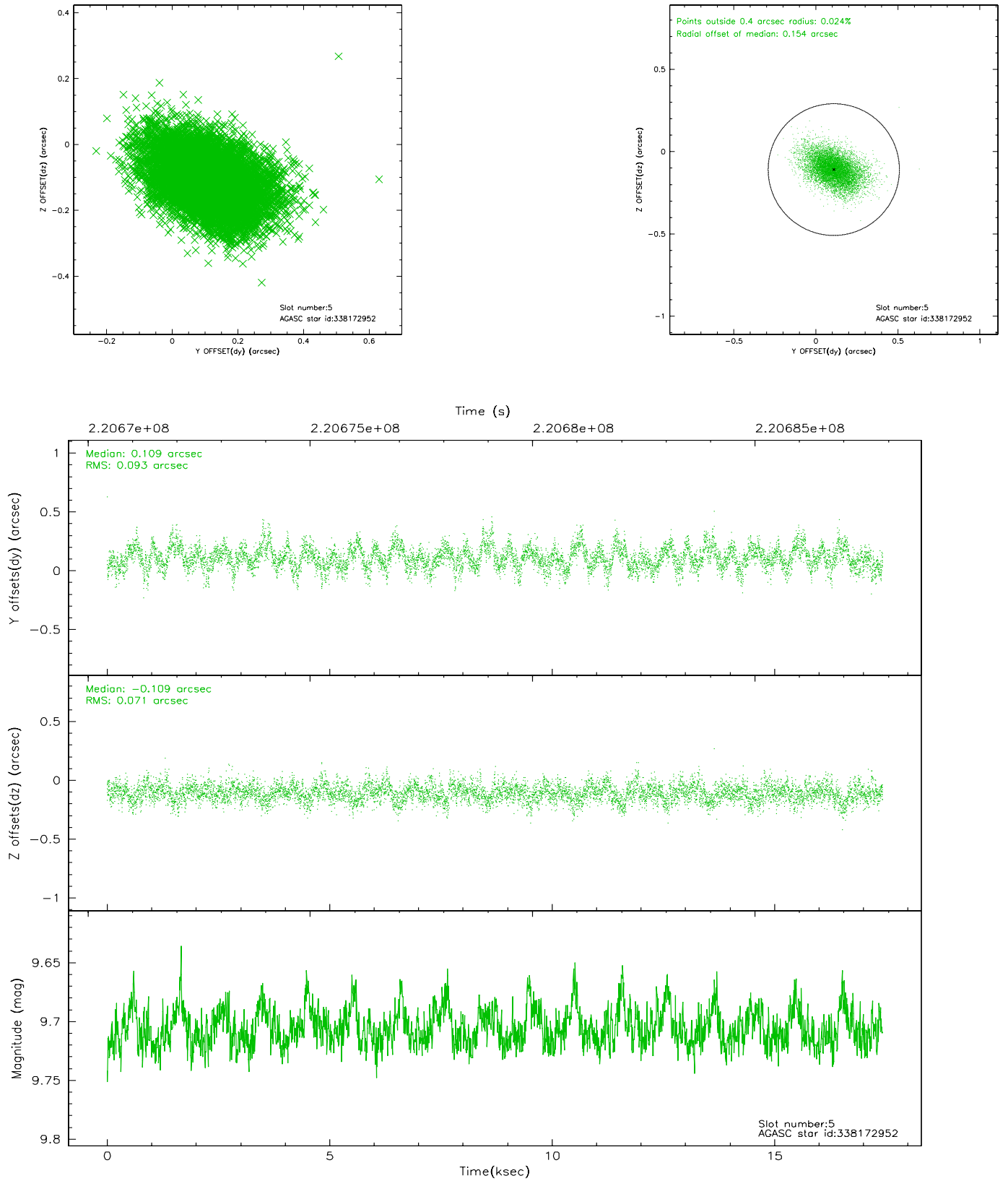
### 2.4.1 Slot 3



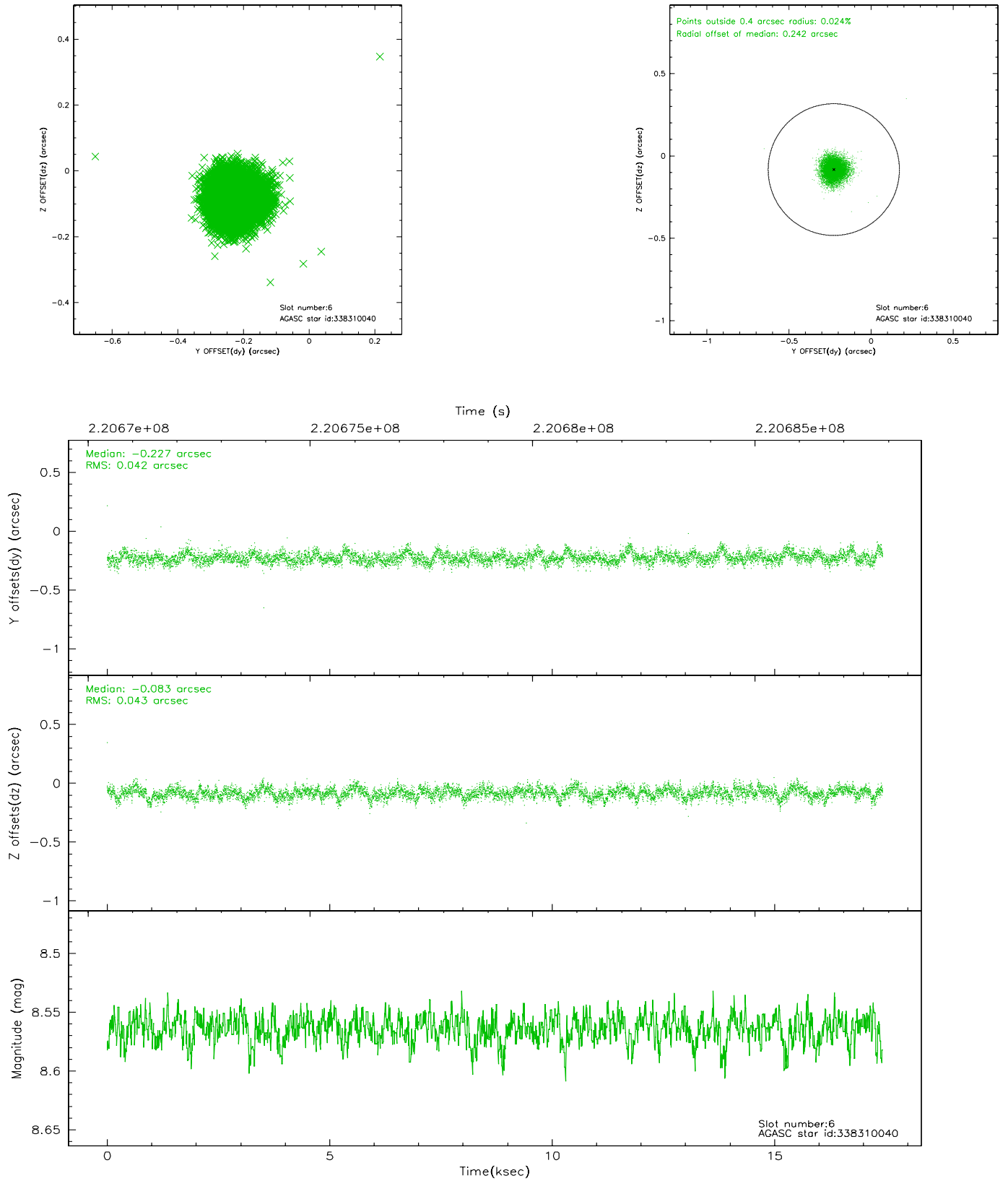
## 2.4.2 Slot 4



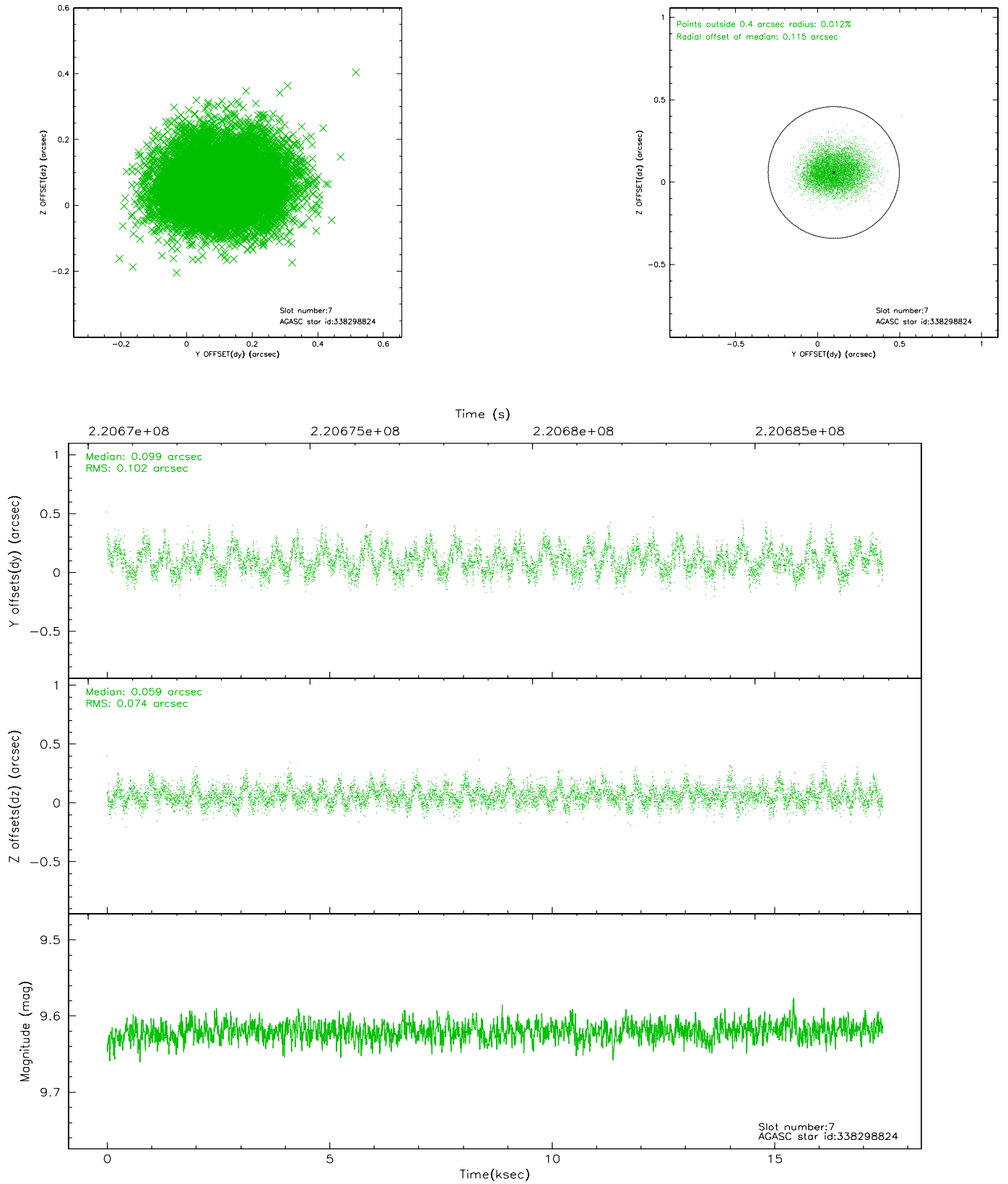
### 2.4.3 Slot 5



## 2.4.4 Slot 6

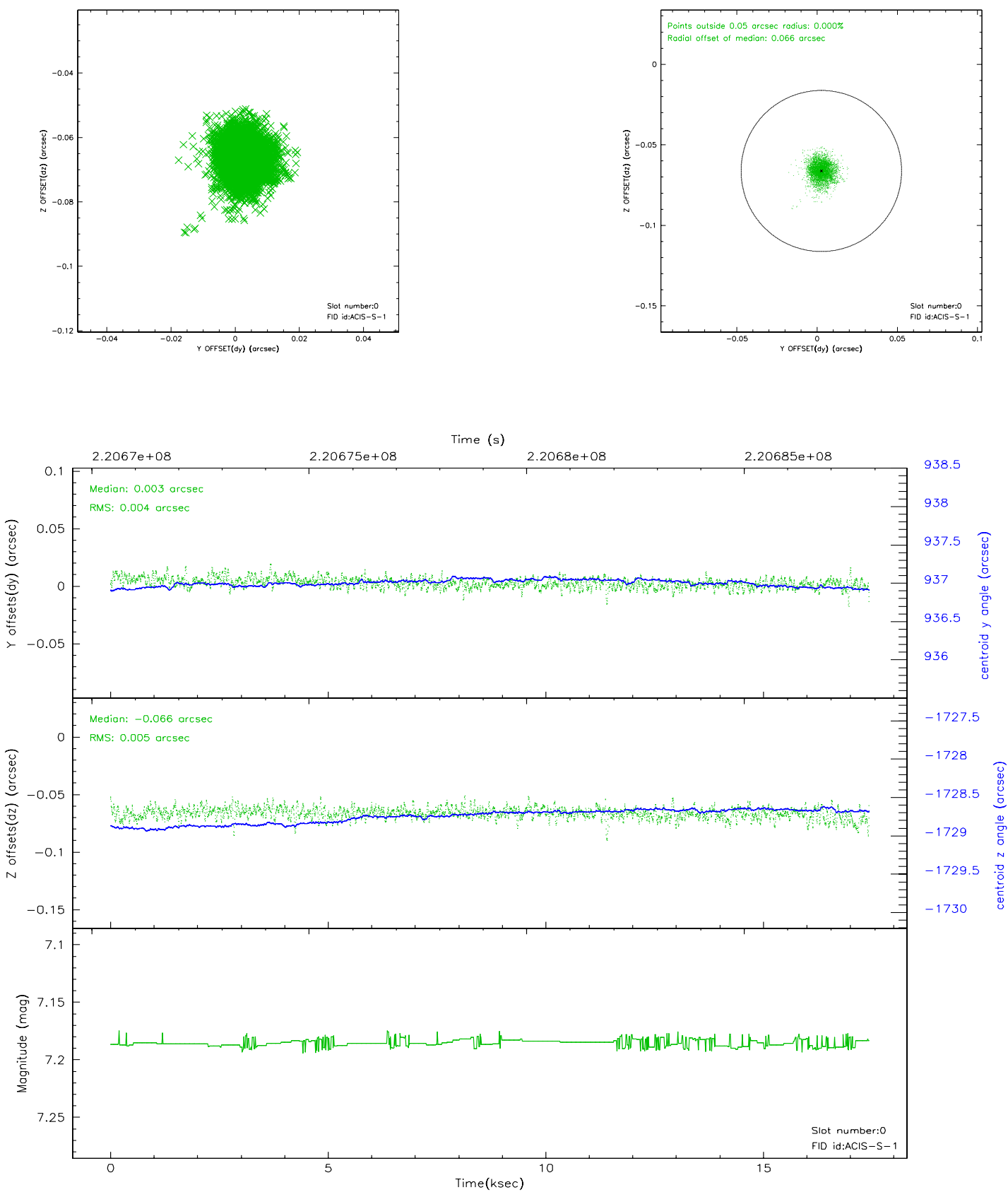


## 2.4.5 Slot 7

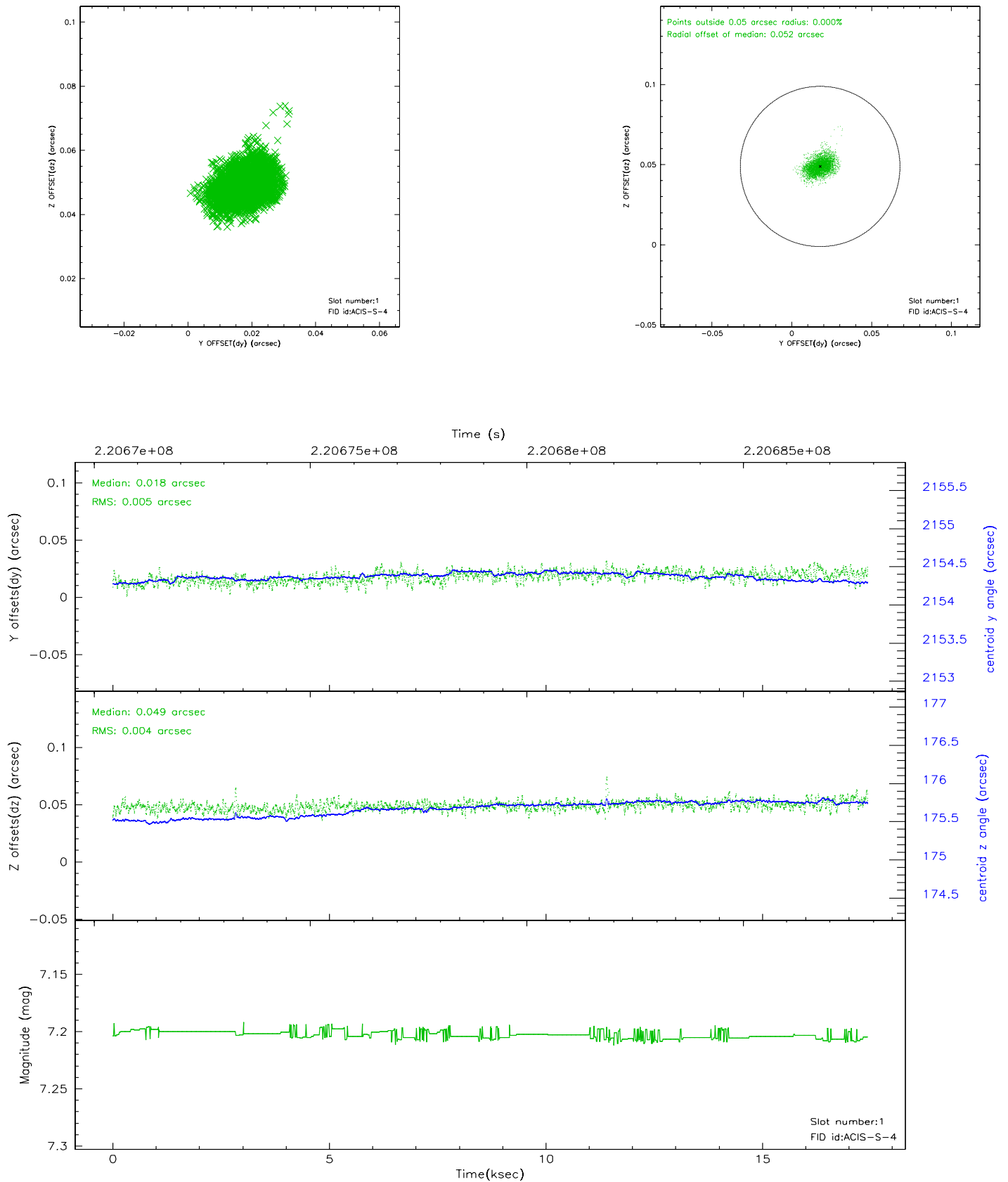


## 2.5 FID Slots

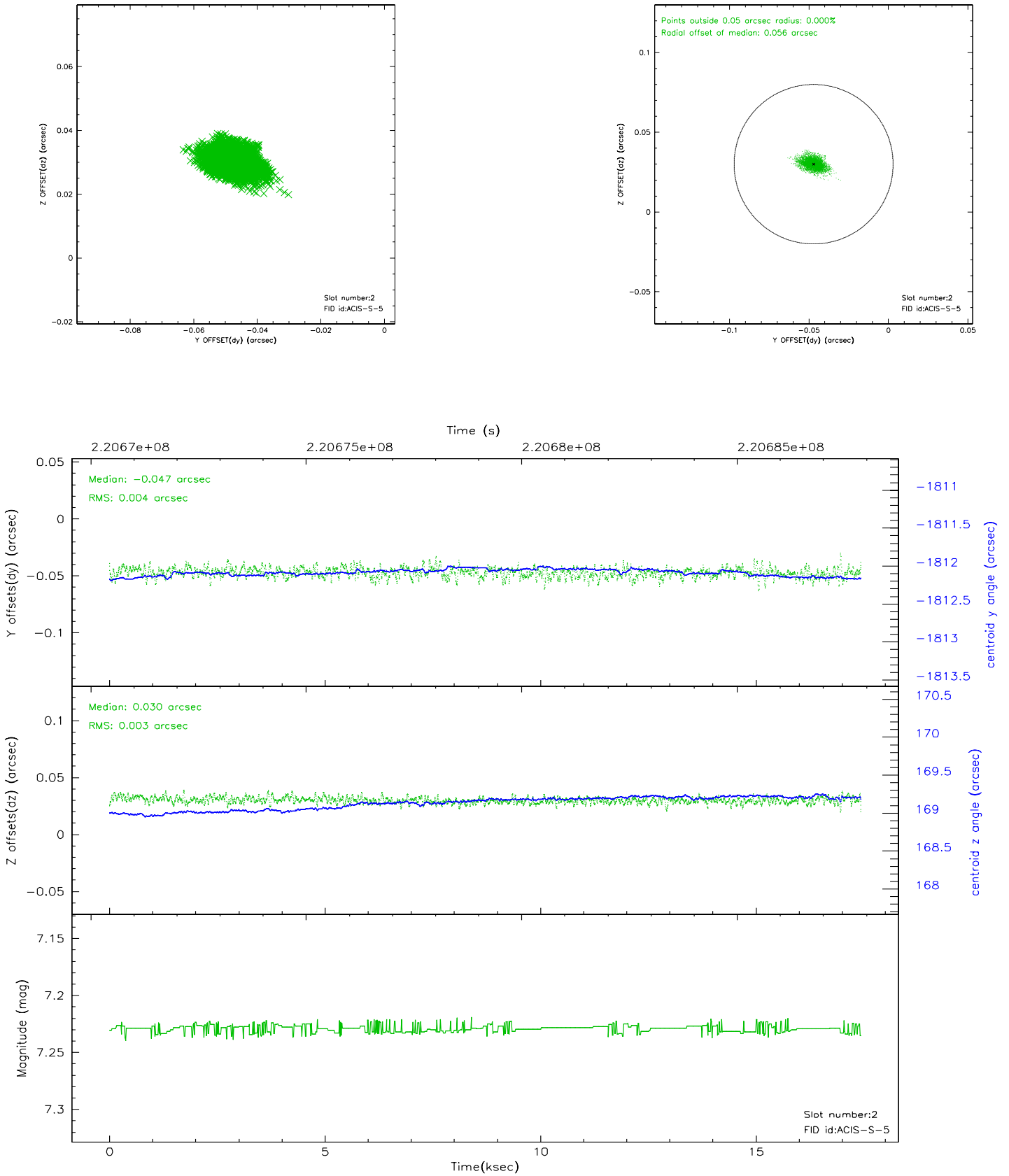
### 2.5.1 Slot 0



## 2.5.2 Slot 1

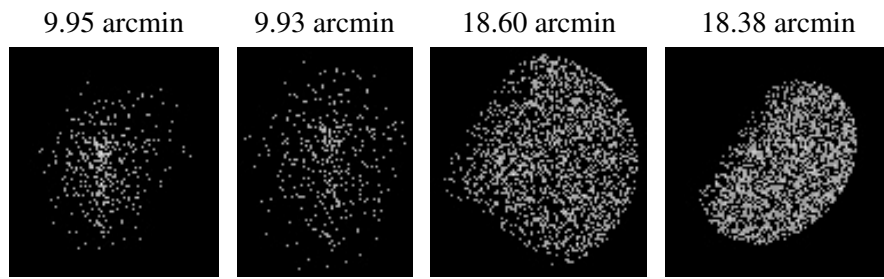


### 2.5.3 Slot 2





### 3 Point Sources



## A Summary

### A.1 Status

V&V Scientist	Beth Sundheim
V&V Date (YYYY-MM-DD)	2006.04.07
V&V Edition	1
V&V Disposition and Status	OK
V&V Charge Time	17.43359

### A.2 Comments