

V&V Reference Report

L2 ASCDS Version : 8.5.1

Observation 5602 - L2 Version 3
Chandra X-Ray Center

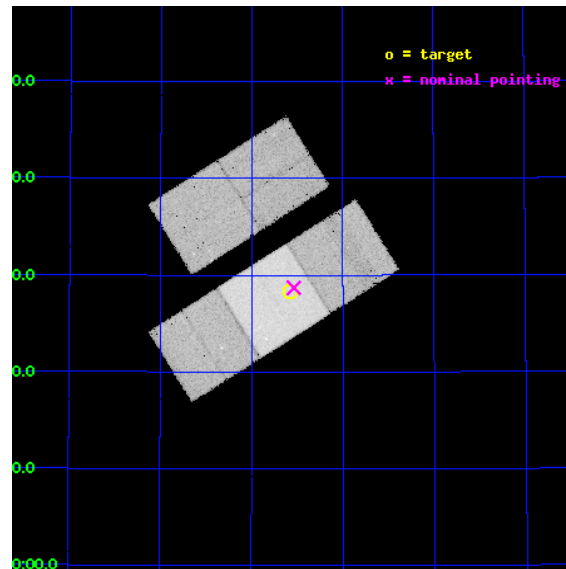
L2 Processing Date : Dec 16 2012

Contents

1	Front	2
2	OBI	3
2.1	OBI	3
2.1.1	Images	3
2.1.2	Bias	3
2.1.3	Parameters	4
2.1.4	Events	4
2.2	Compared Parameters	5
2.3	Aspect	6
2.4	Star Slots	9
2.4.1	Slot 3	9
2.4.2	Slot 4	10
2.4.3	Slot 5	11
2.4.4	Slot 6	12
2.4.5	Slot 7	13
2.5	FID Slots	14
2.5.1	Slot 0	14
2.5.2	Slot 1	15
2.5.3	Slot 2	16
A	Summary	17
A.1	Status	17
A.2	Comments	17

1 Front

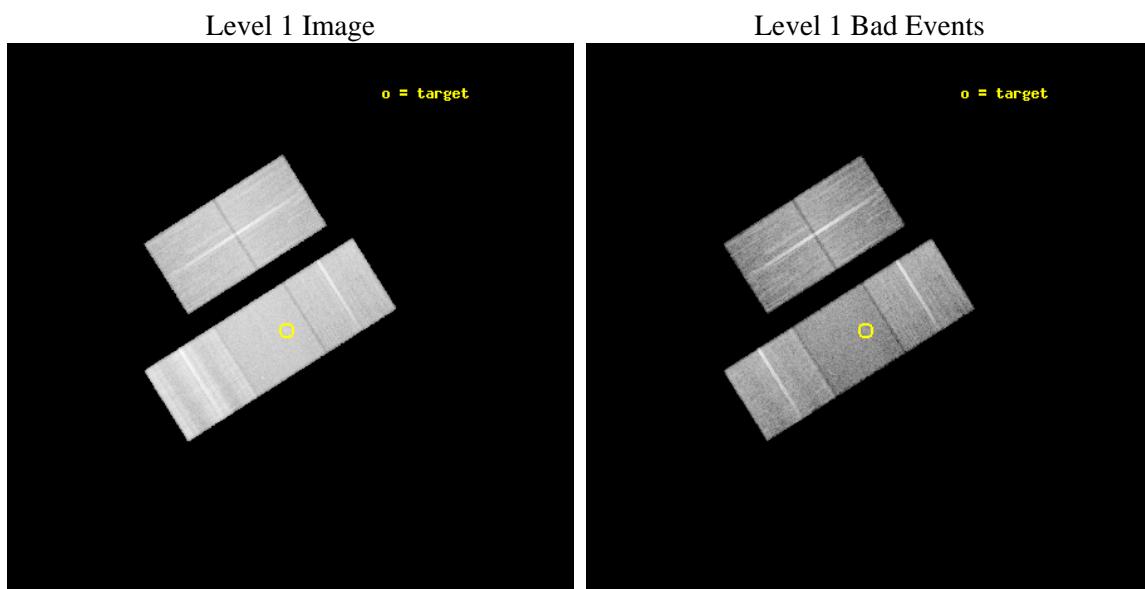
seq_num	701025	Sequence number
obs_id	5602	Observation id
title	Alternate: Magnified Views of Quasar Outflows	Proposal title
observer	Professor Gordon Garmire	Principal investigator
object	SDSS 0903+5028	Source name
dtcycle	0	
cycle	P	events from which exps? Prim/Second/Both
ra_targ	135.895417	Observer's specified target RA [deg]
dec_targ	50.472	Observer's specified target Dec [deg]
ra_nom	135.88418069454	Nominal RA [deg]
dec_nom	50.478499499251	Nominal Dec [deg]
roll_nom	147.74091684233	Nominal Roll [deg]
revision	3	Processing version of data
ontime	18178.399965018	Sum of GTIs [s]
livetime	17940.885786732	Livetime [s]
ontime2	18175.258984774	Sum of GTIs [s]
ontime3	18178.399965018	Sum of GTIs [s]
ontime6	18172.117984563	Sum of GTIs [s]
ontime7	18178.399965018	Sum of GTIs [s]
ontime8	18178.399965018	Sum of GTIs [s]
l2events	209691	Number of level 2 events



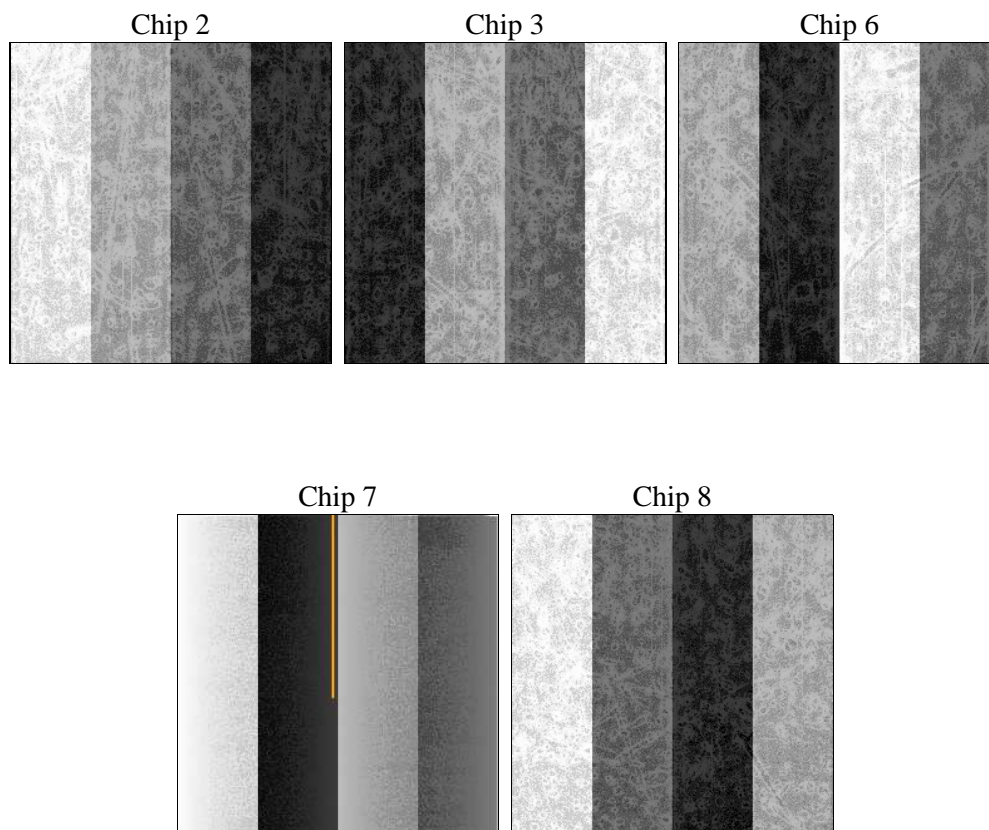
2 OBI

2.1 OBI

2.1.1 Images



2.1.2 Bias



2.1.3 Parameters

obi_num	0	Obi number	sched_exp_time	18000.000000	[s] Scheduled observation exposure time
ascdsver	8.5.1	Processing system revision	ontime	18178.399965018	Sum of GTIs [s]
caldbver	4.5.5	 	ontime2	18175.258984774	Sum of GTIs [s]
date	2012-12-16T10:54:45	Date and time of file creation	ontime3	18178.399965018	Sum of GTIs [s]
revision	3	Processing version of data	ontime6	18172.117984563	Sum of GTIs [s]
			ontime7	18178.399965018	Sum of GTIs [s]
			ontime8	18178.399965018	Sum of GTIs [s]
			l1events	1057240	Number of level 1 events

2.1.4 Events

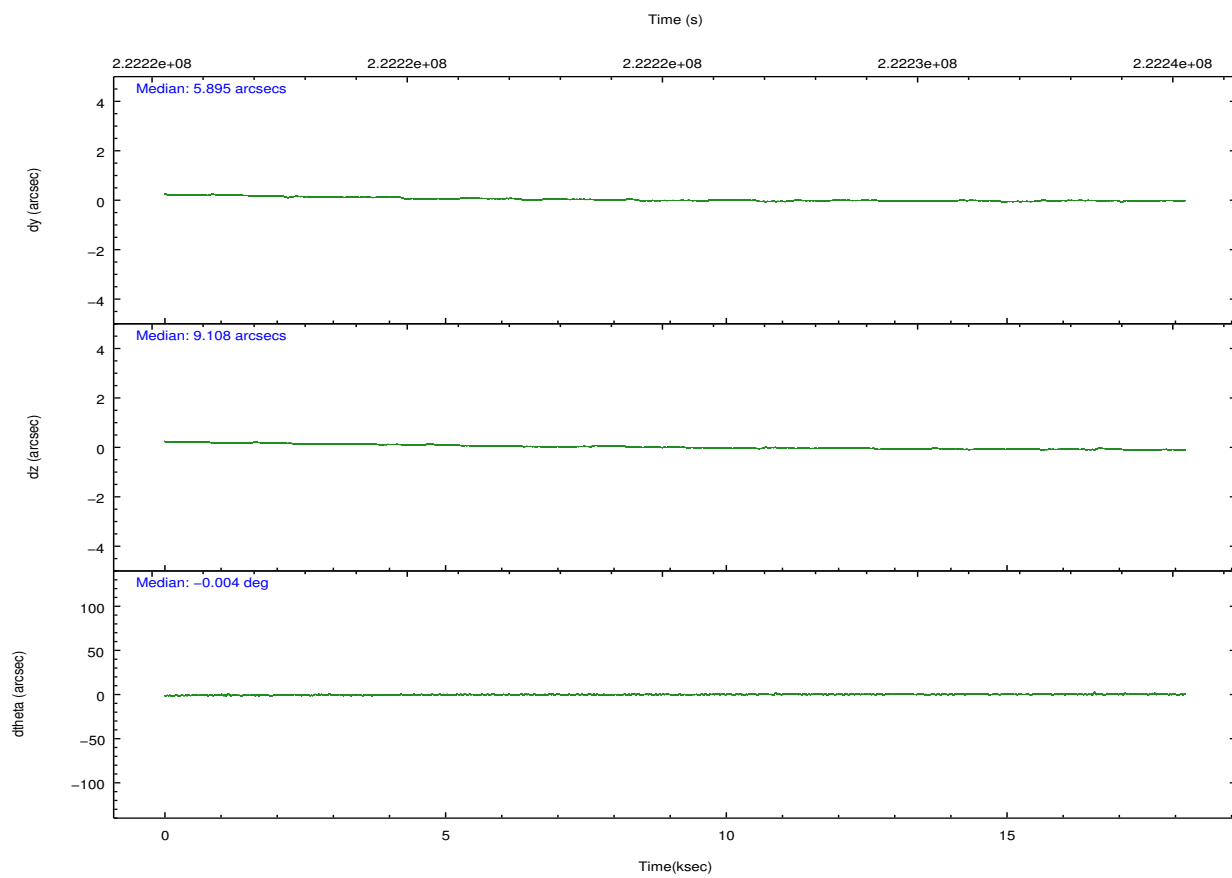
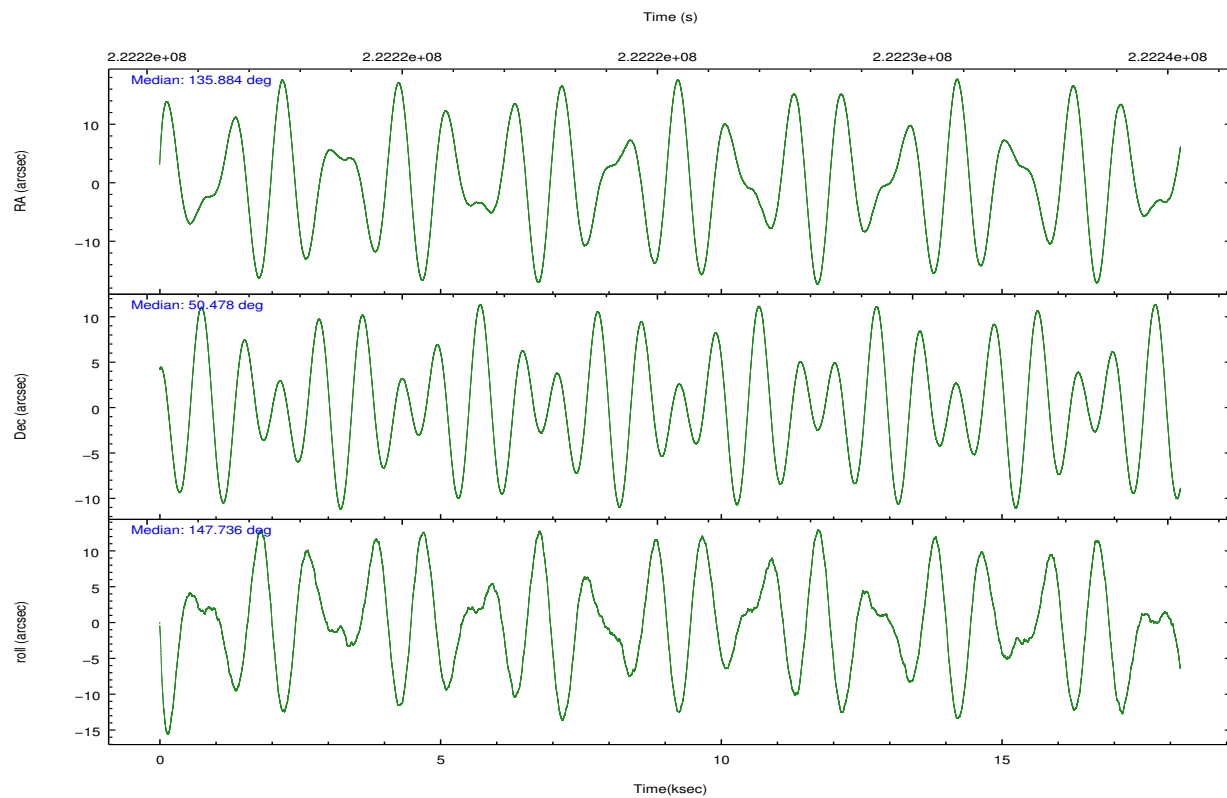
	ccd 2	ccd 3	ccd 6	ccd 7	ccd 8
level 1 events	183793	179716	192947	206873	293911
rejected events	150091	146721	158750	115924	171291
rejected %	81%	81%	82%	56%	58%

	ccd 2	ccd 3	ccd 6	ccd 7	ccd 8
grade 0 events	14979	13722	13271	10377	42866
	8%	7%	6%	5%	14%
grade 1 events	141	108	128	239	382
	0%	0%	0%	0%	0%
grade 2 events	6996	7057	7721	19233	19875
	3%	3%	4%	9%	6%
grade 3 events	2494	2558	2545	8251	19085
	1%	1%	1%	3%	6%
grade 4 events	2757	2602	2448	8169	17147
	1%	1%	1%	3%	5%
grade 5 events	5475	6237	6638	18433	9336
	2%	3%	3%	8%	3%
grade 6 events	7594	8057	9330	47567	27041
	4%	4%	4%	22%	9%
grade 7 events	143357	139375	150866	94604	158179
	77%	77%	78%	45%	53%

2.2 Compared Parameters

Parameter	Planned	Actual	Parameter	Planned	Actual
Instrument	ACIS	ACIS	Obspar format version number	7	7
Detector	ACIS-23678	ACIS-23678	Obspar file type	PREDICTED	ACTUAL
Grating	NONE	NONE	Obspar update status	NONE	UPDATED
Data mode	VFAINT	VFAINT	Number of optional ACIS chips dropped	0	0
Observation mode	POINTING	POINTING	On-chip summing requested	N	N
[deg] Pointing RA	135.926956	135.8841806945438	Subarray requested	NONE	NONE
[deg] Pointing Dec	50.477798	50.47849949925121	Alternating exposures requested	N	N
[deg] Pointing Roll	147.551289	147.7409168423272	[s] Primary exposure time	0.000000	3.1
[mm] SIM focus pos	-0.684267	-0.6828225247311905			
[mm] SIM defocus	0	0.001444936568705701			
[mm] SIM translation stage pos	-190.132523	-190.1400660498719			
[mm] SIM translation stage offset	0	0.00754346686406393			
[s] Observation start time (MET)	222216338.184000	222215081.94517			
Observation start date	2005-01-15T22:44:34	2005-01-15T22:24:41			
[s] Observation end time (MET)	222234338.184000	222235512.24609			
Observation end date	2005-01-16T03:44:34	2005-01-16T04:05:12			
Read mode	TIMED	TIMED			

2.3 Aspect

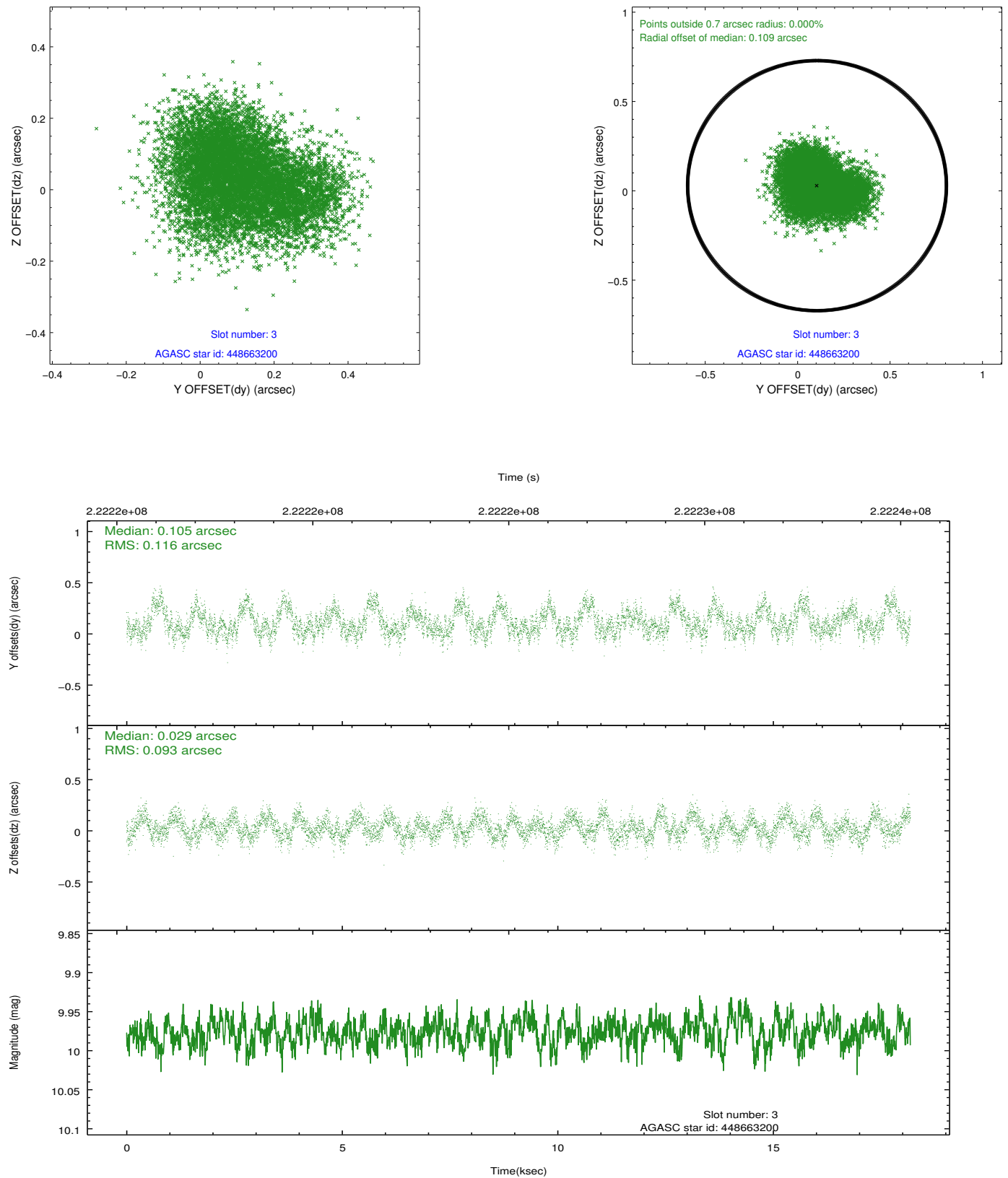


Slot Statistics

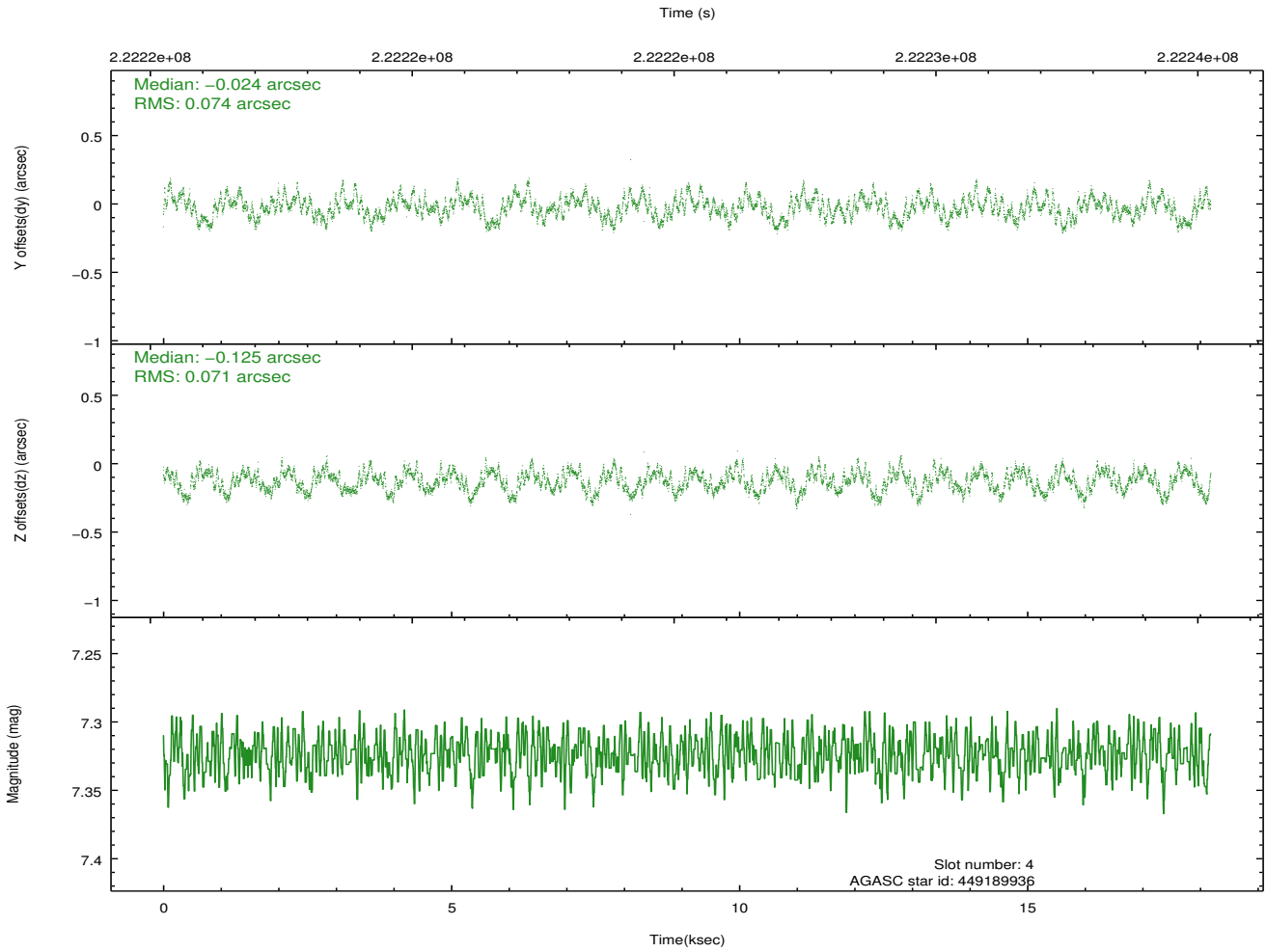
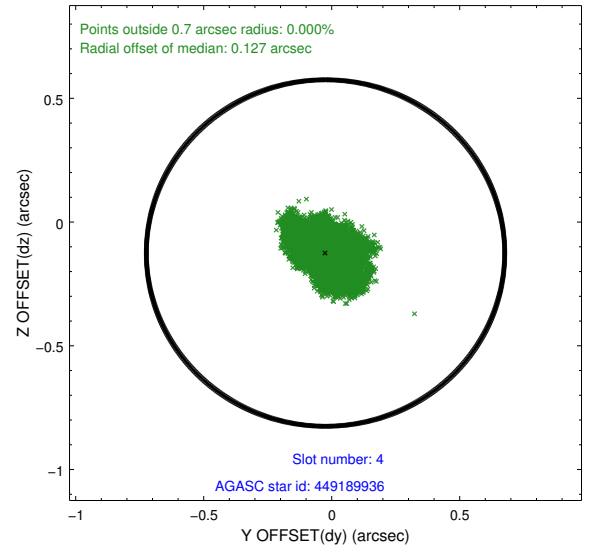
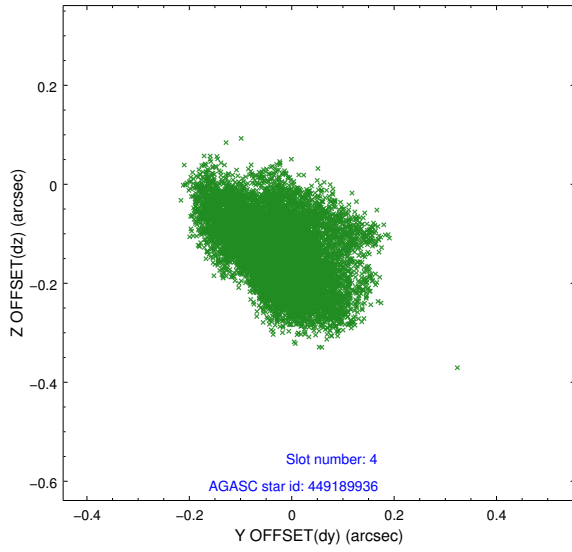
slot	status	id	mag	n_pts	med_dy	med_dz	dr1	dr2	ra	dec	mean_y	mean_z
0	FID	ACIS-S-2	7.10	4435	-0.064	-0.056	0.007	0.012	0.000000	0.000000	-758.71	-1730.41
1	FID	ACIS-S-4	7.21	4435	0.118	0.046	0.006	0.011	0.000000	0.000000	2154.64	177.96
2	FID	ACIS-S-5	7.23	4435	-0.085	0.019	0.007	0.012	0.000000	0.000000	-1811.30	171.83
3	GUIDE	448663200	9.98	8848	0.105	0.029	0.160	0.252	134.711180	50.224045	1885.38	2254.51
4	GUIDE	449189936	7.32	8871	-0.024	-0.125	0.112	0.174	135.761845	49.948243	-699.51	1813.86
5	GUIDE	449578736	8.53	8871	-0.034	0.108	0.066	0.106	135.185163	50.928799	2296.24	-473.34
6	GUIDE	449580392	9.27	8866	-0.070	0.118	0.093	0.151	136.586076	50.962265	-321.15	-2279.12
7	GUIDE	449587064	6.99	8868	0.012	-0.125	0.054	0.088	136.328139	50.823788	-99.59	-1542.42

2.4 Star Slots

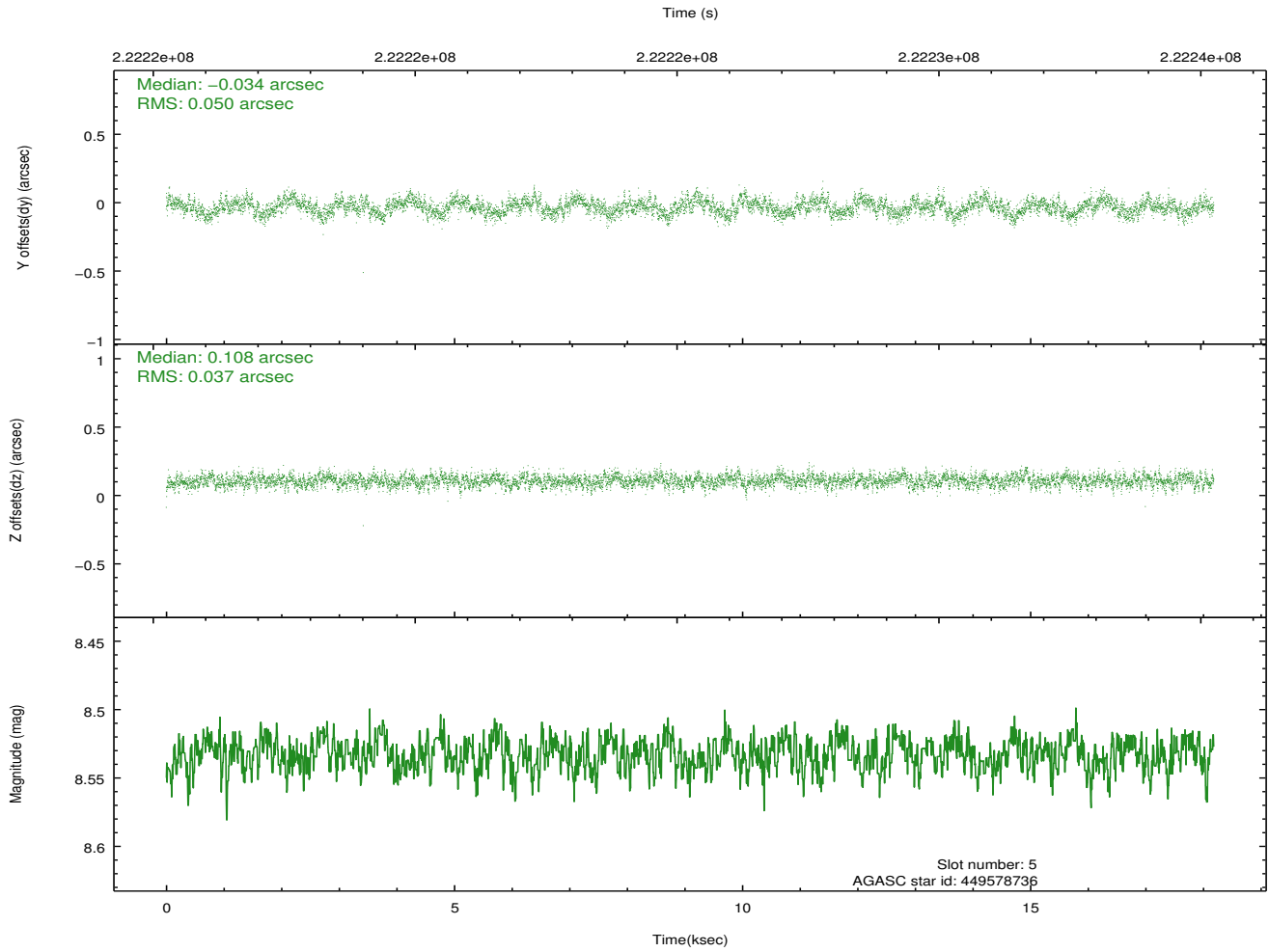
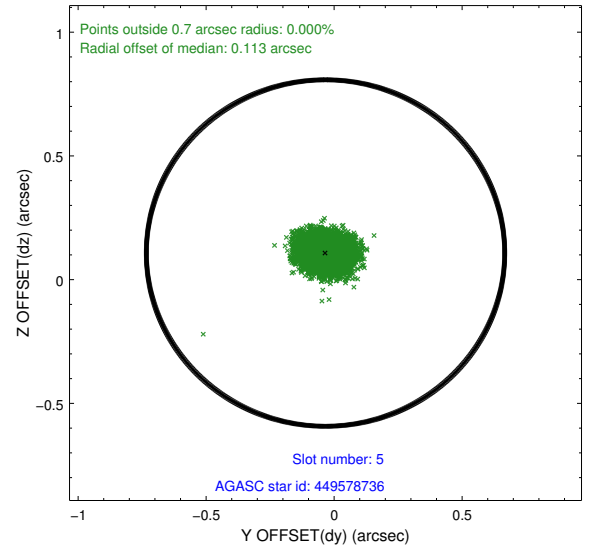
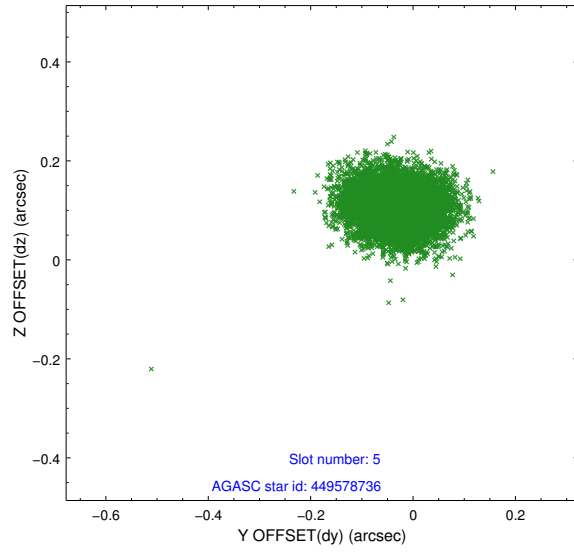
2.4.1 Slot 3



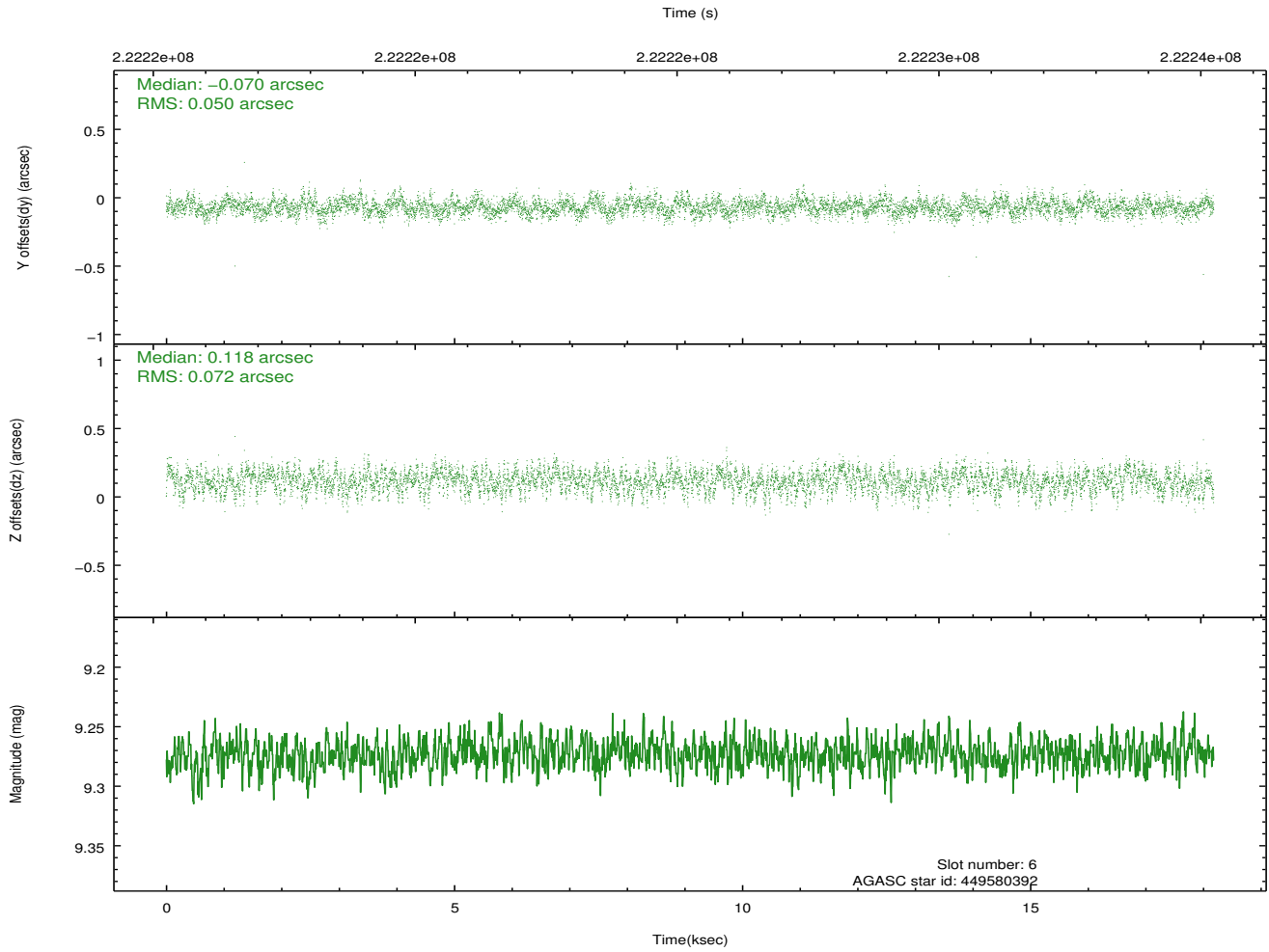
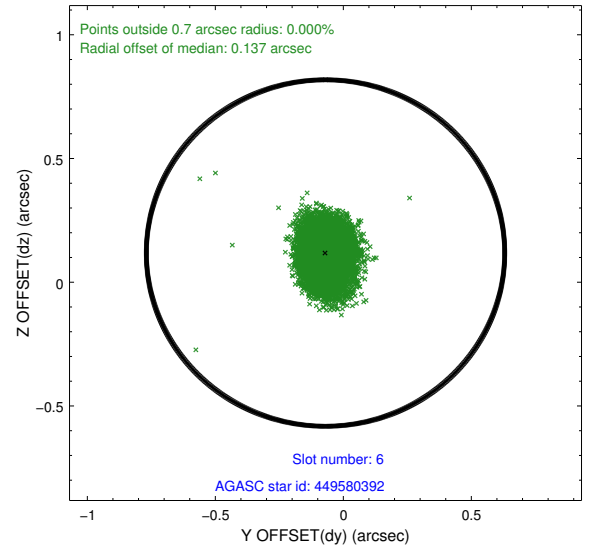
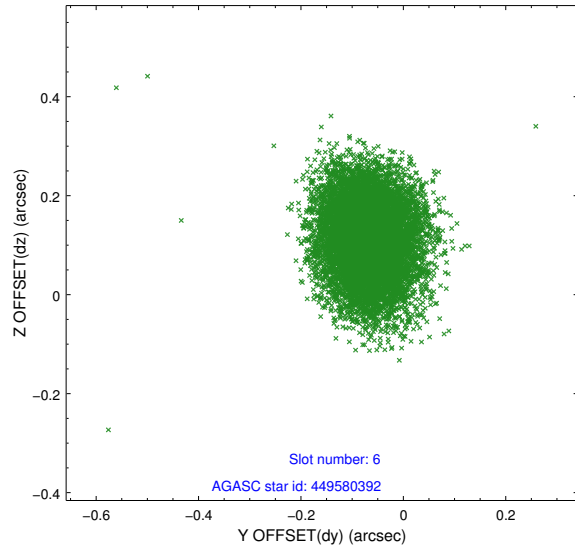
2.4.2 Slot 4



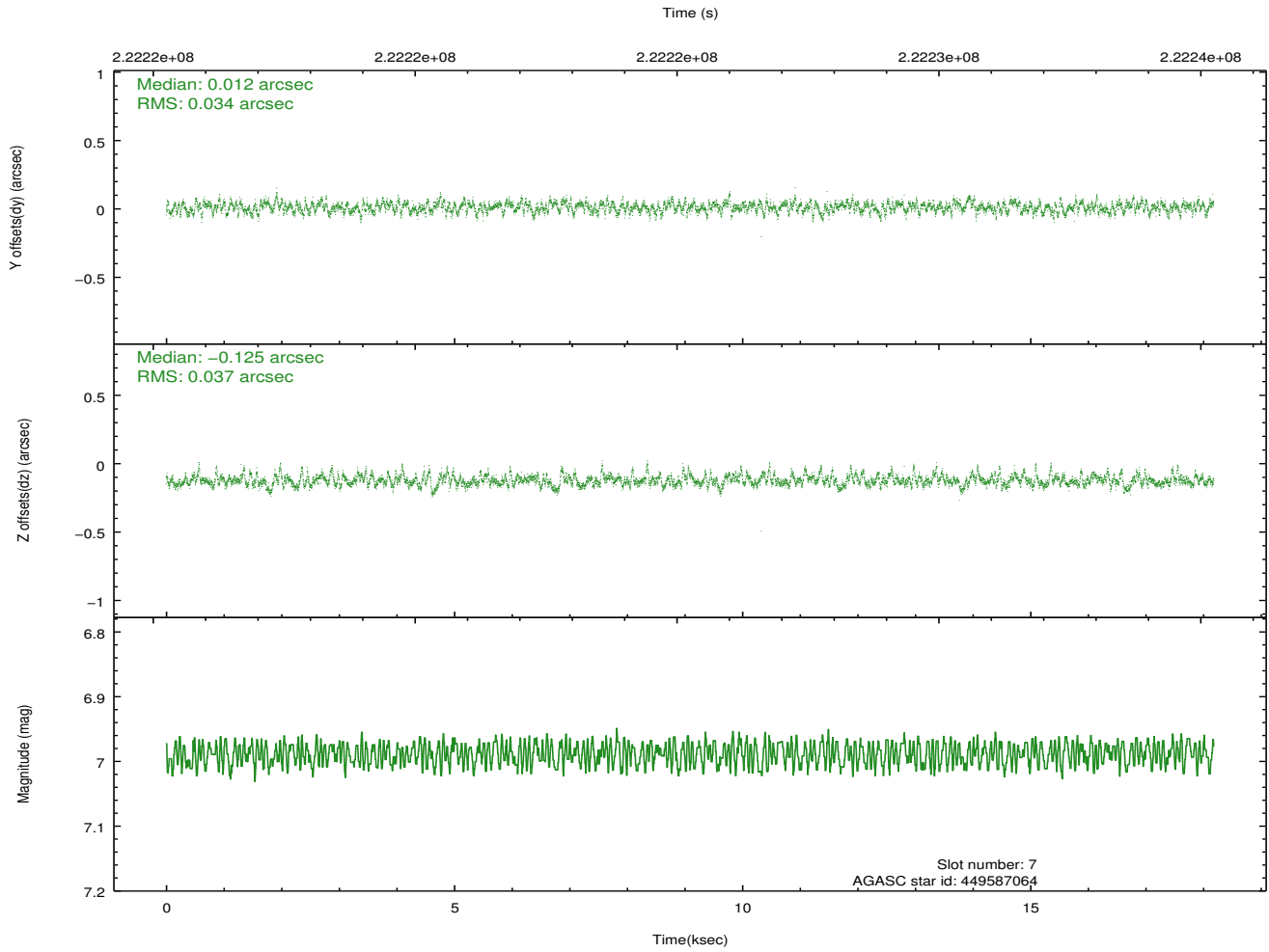
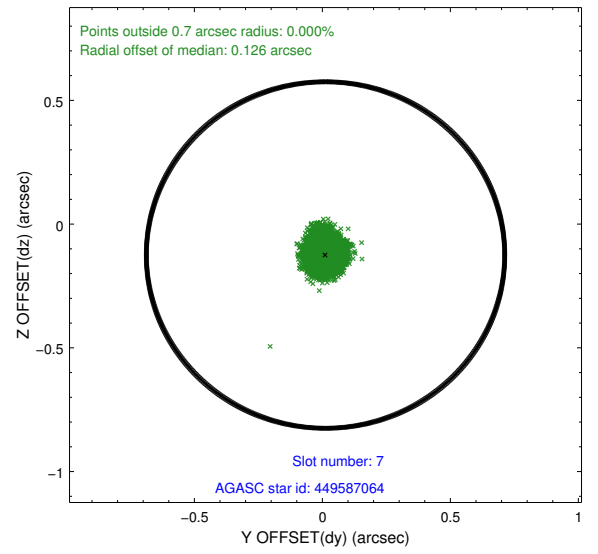
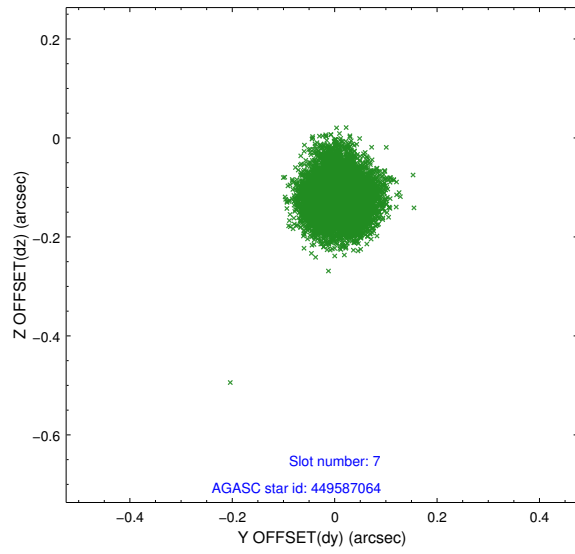
2.4.3 Slot 5



2.4.4 Slot 6

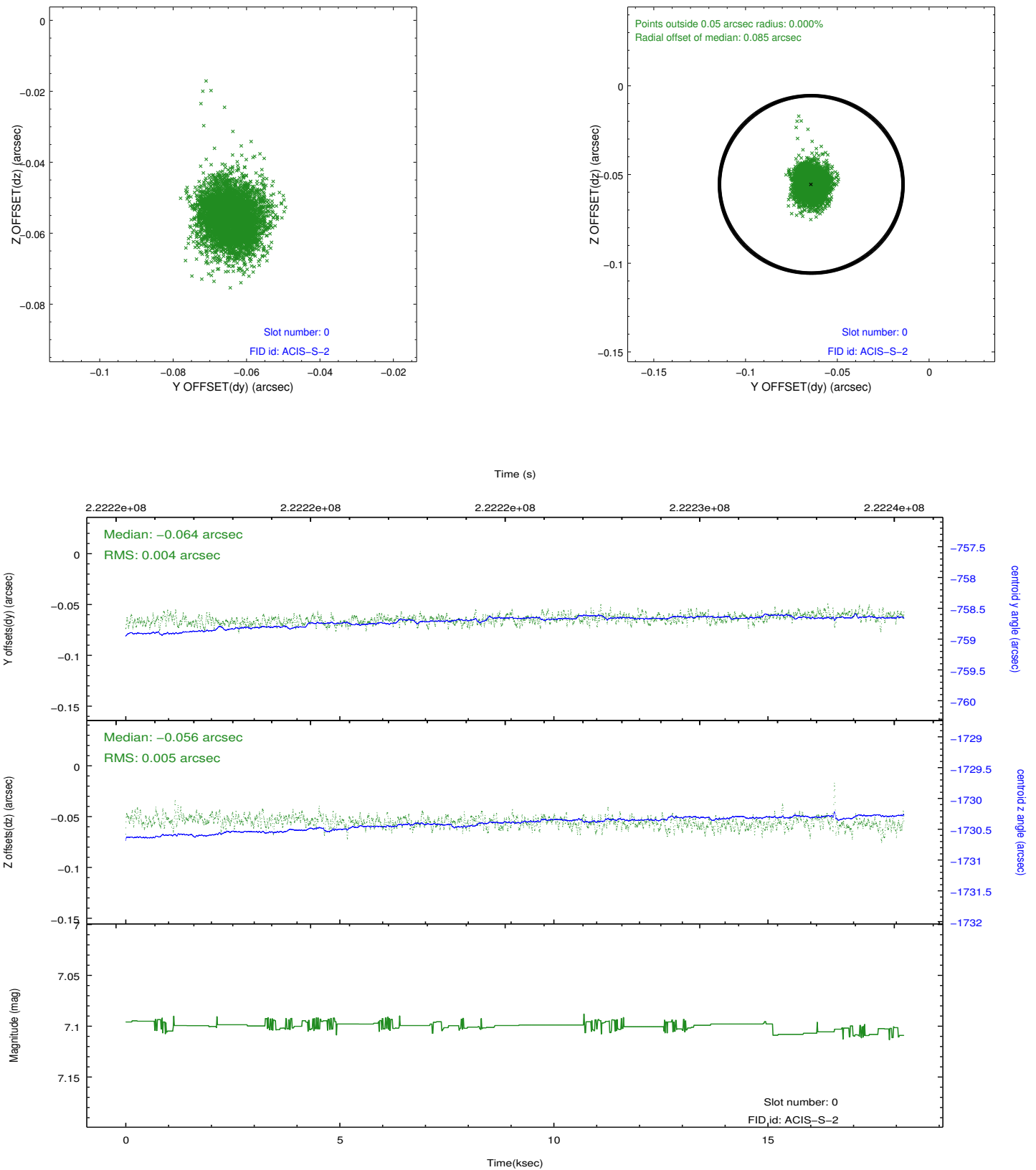


2.4.5 Slot 7

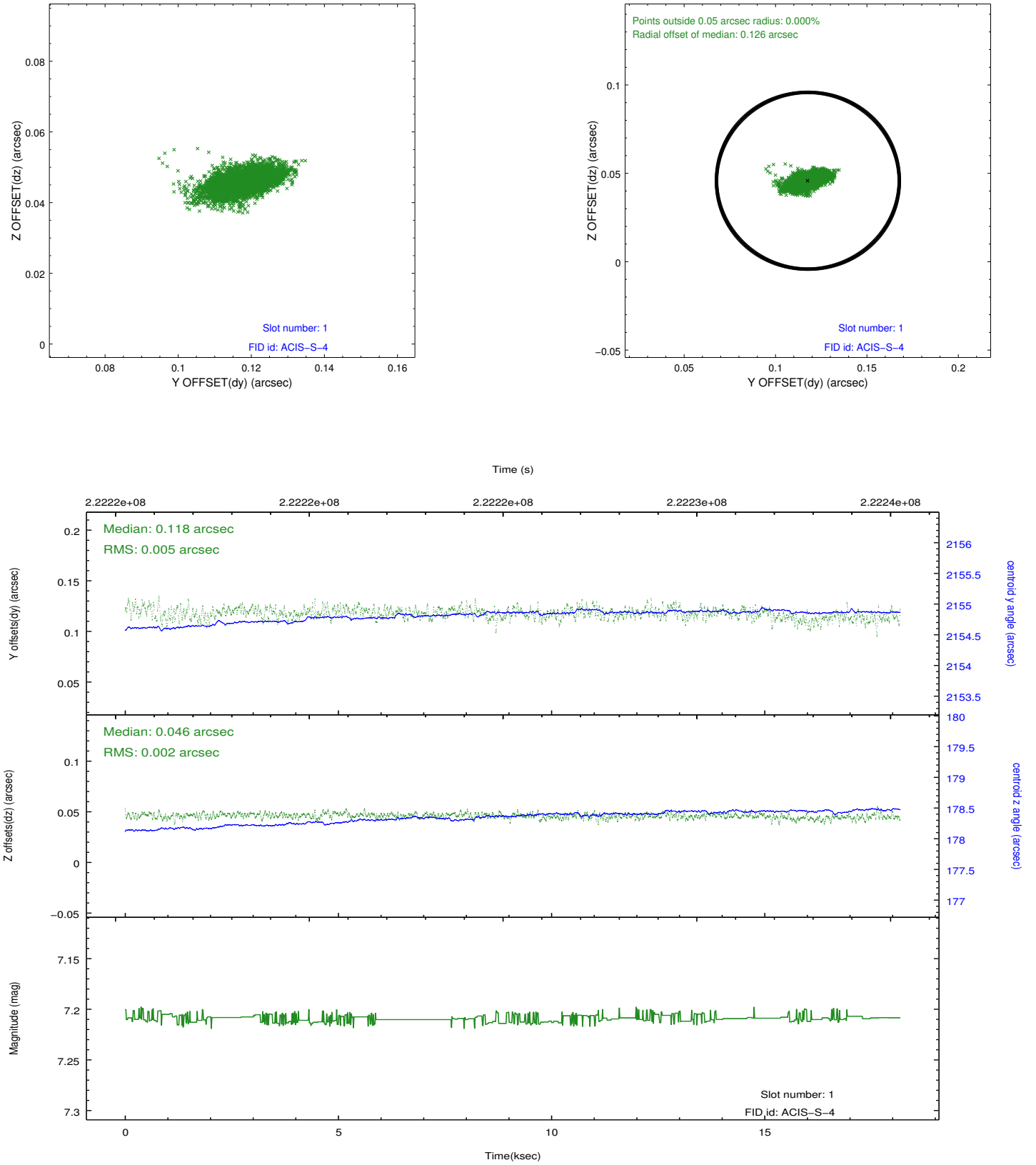


2.5 FID Slots

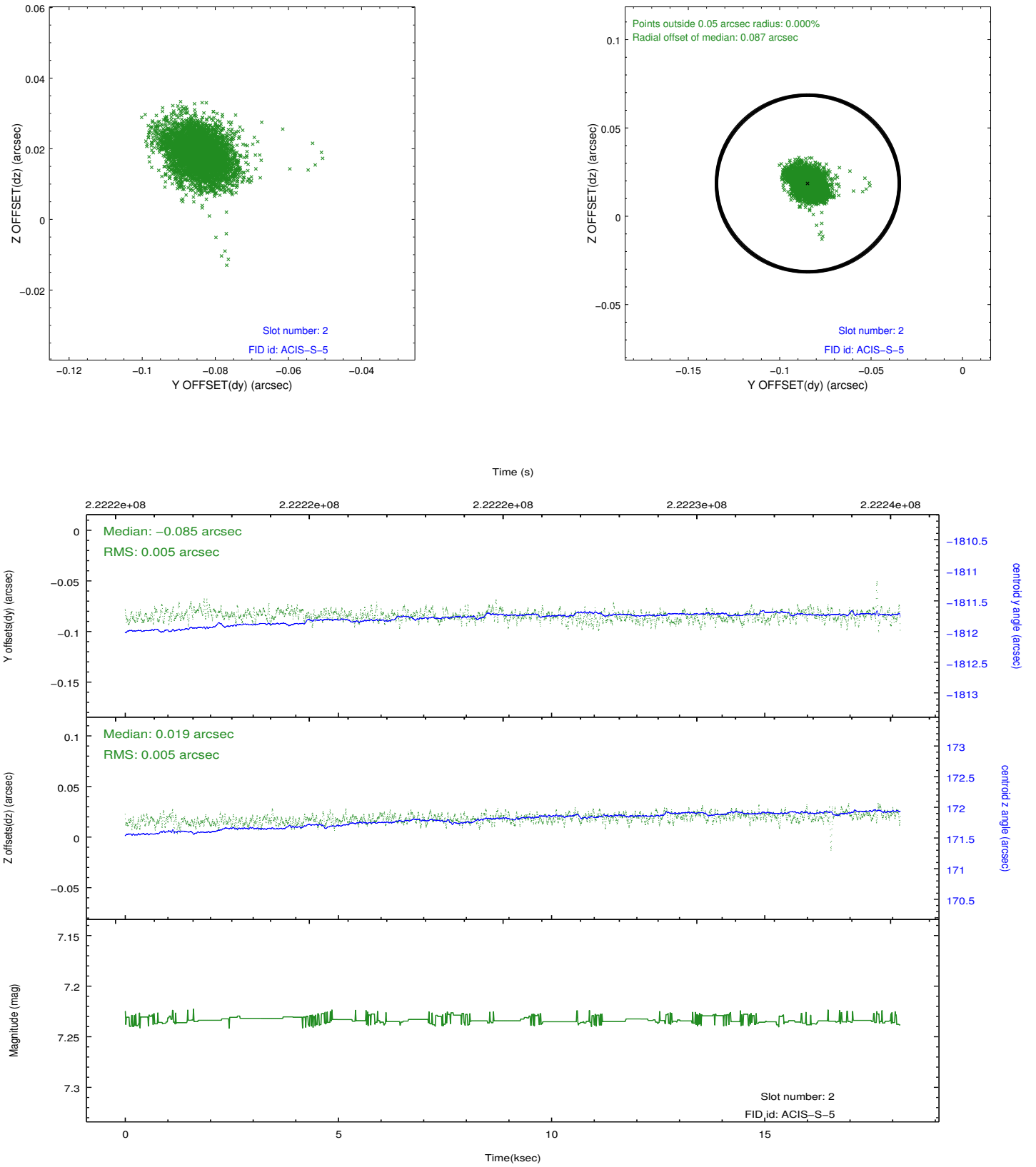
2.5.1 Slot 0



2.5.2 Slot 1



2.5.3 Slot 2



A Summary

A.1 Status

V&V Scientist	Jen Lauer
V&V Date (YYYY-MM-DD)	2013.01.08
V&V Edition	1
V&V Disposition and Status	OK
V&V Charge Time	18.17839

A.2 Comments