

V&V Reference Report

L2 ASCDS Version : 7.6.7

Observation 5602 - L2 Version 002
Chandra X-Ray Center

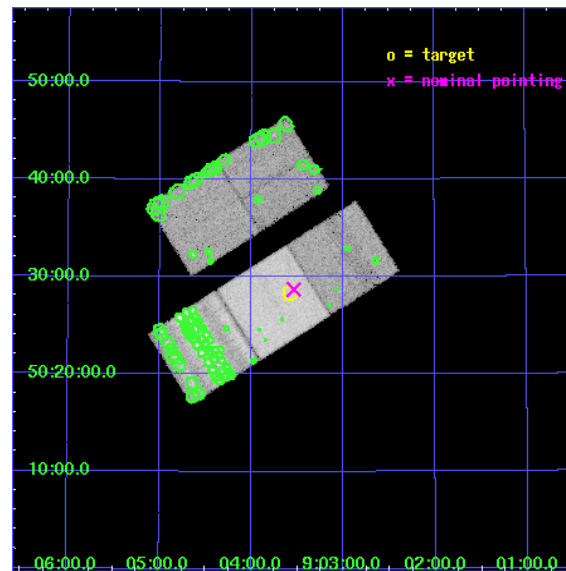
L2 Processing Date: Feb 17 2006

Contents

1	Front	2
2	OBI	3
2.1	OBI	3
2.1.1	Images	3
2.1.2	Bias	3
2.1.3	Parameters	4
2.1.4	Events	4
2.2	Compared Parameters	5
2.3	Aspect	6
2.4	Star Slots	9
2.4.1	Slot 3	9
2.4.2	Slot 4	10
2.4.3	Slot 5	11
2.4.4	Slot 6	12
2.4.5	Slot 7	13
2.5	FID Slots	14
2.5.1	Slot 0	14
2.5.2	Slot 1	15
2.5.3	Slot 2	16
3	Point Sources	17
A	Summary	18
A.1	Status	18
A.2	Comments	18

1 Front

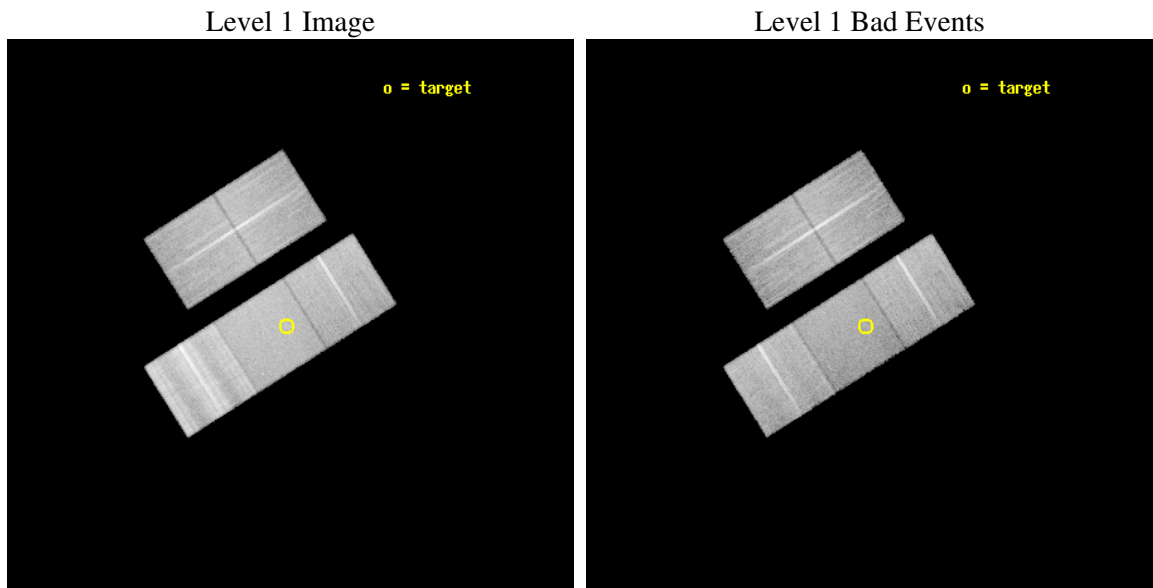
seq_num	701025
obs_id	5602
title	Alternate: Magnified Views of Quasar Outflows
observer	Prof. Gordon Garmire
object	SDSS 0903+5028
dtcycle	0
cycle	P
ra_targ	135.895417
dec_targ	50.472
ra_nom	135.88421754347
dec_nom	50.478484608738
roll_nom	147.74088841081
revision	2
ontime	18178.399965048
livetime	17940.885786761
ontime2	18175.258984804
ontime3	18178.399965048
ontime6	18172.117984593
ontime7	18178.399965048
ontime8	18178.399965048
l2events	234403



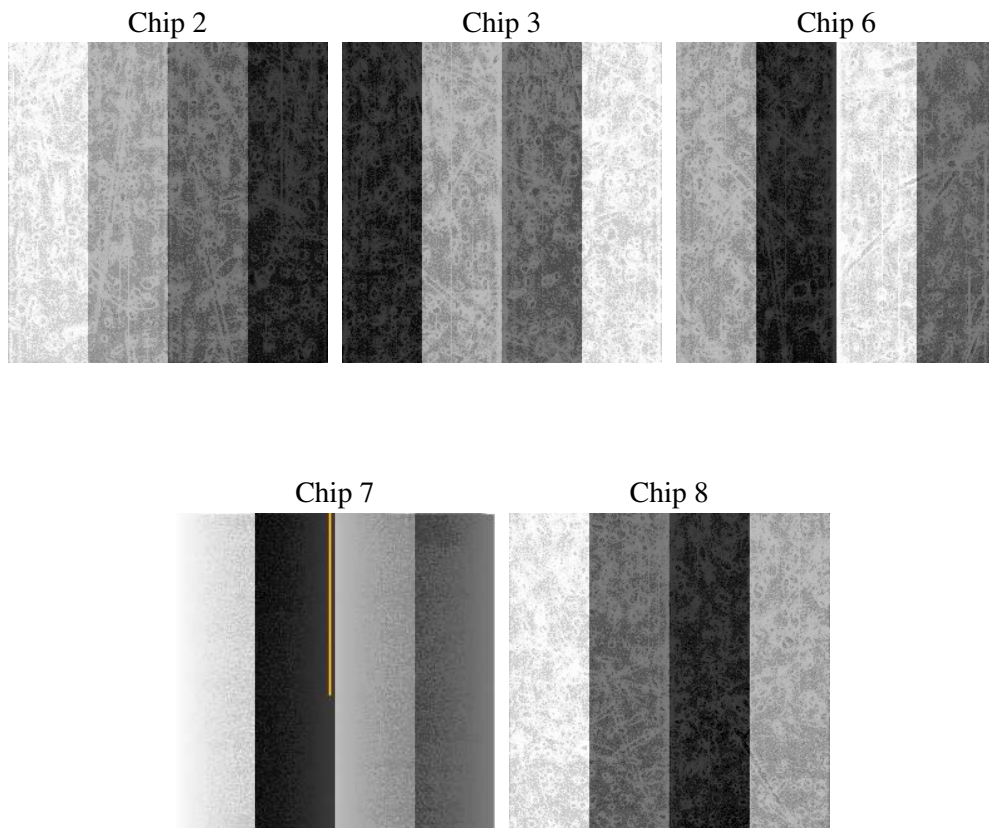
2 OBI

2.1 OBI

2.1.1 Images



2.1.2 Bias



2.1.3 Parameters

obi_num	0
ascdsver	7.6.7
caldbver	3.2.1
date	2006-02-17T18:07:16
revision	2

sched_exp_time	18000.000000
ontime	18695.313713342
ontime2	18692.17271319
ontime3	18695.313693434
ontime6	18689.031732887
ontime7	18695.313713342
ontime8	18695.313693434
l1events	1057240

2.1.4 Events

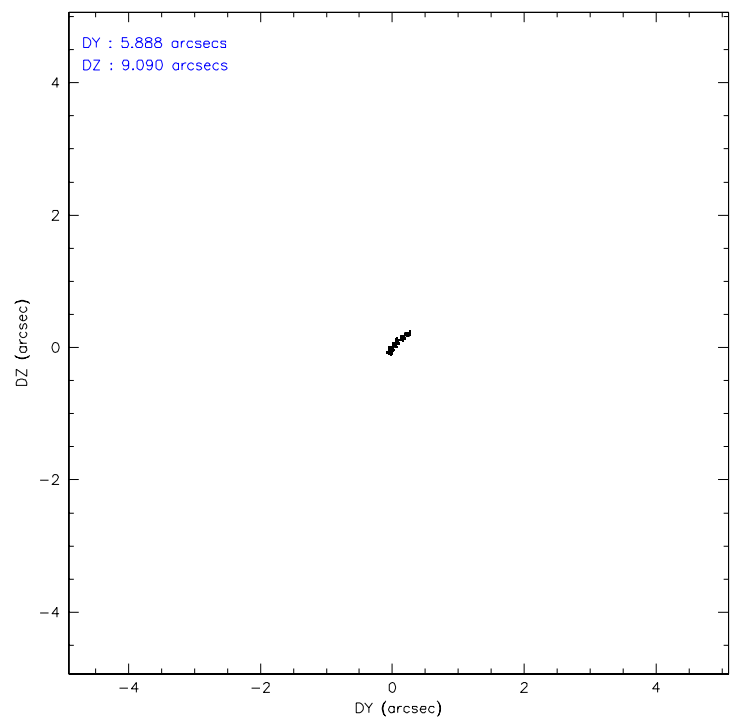
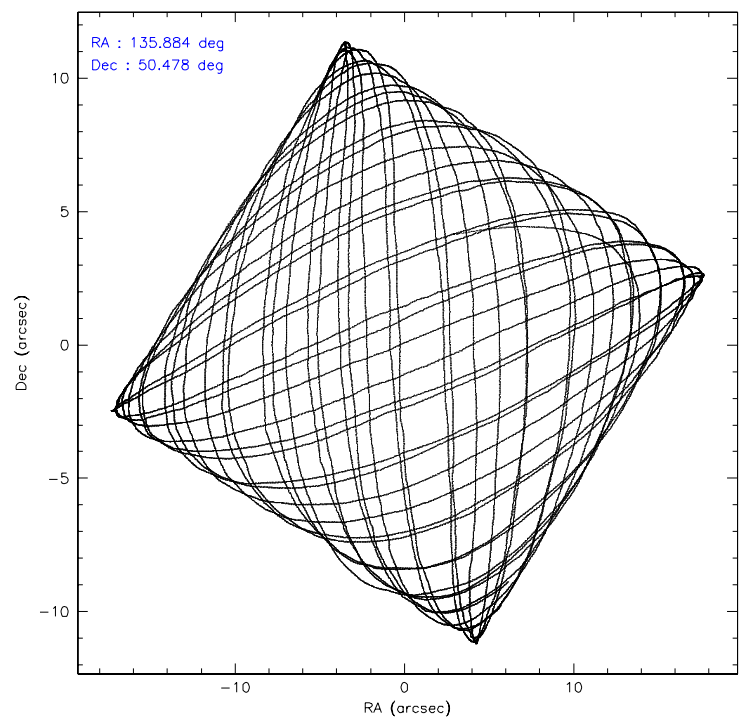
	ccd 2	ccd 3	ccd 6	ccd 7	ccd 8
level 1 events	183793	179716	192947	206873	293911
rejected events	150096	146728	158756	123063	171310
rejected %	81%	81%	82%	59%	58%

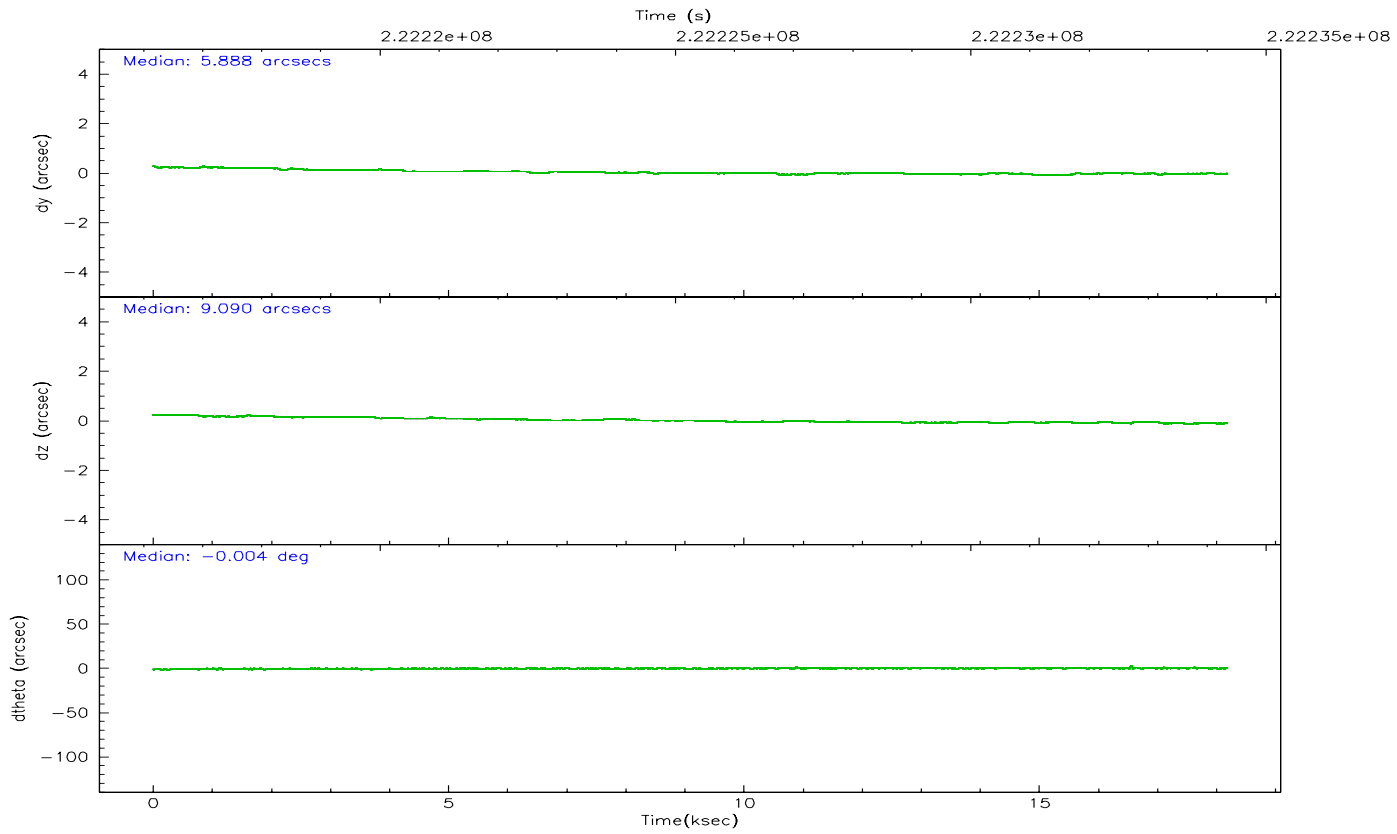
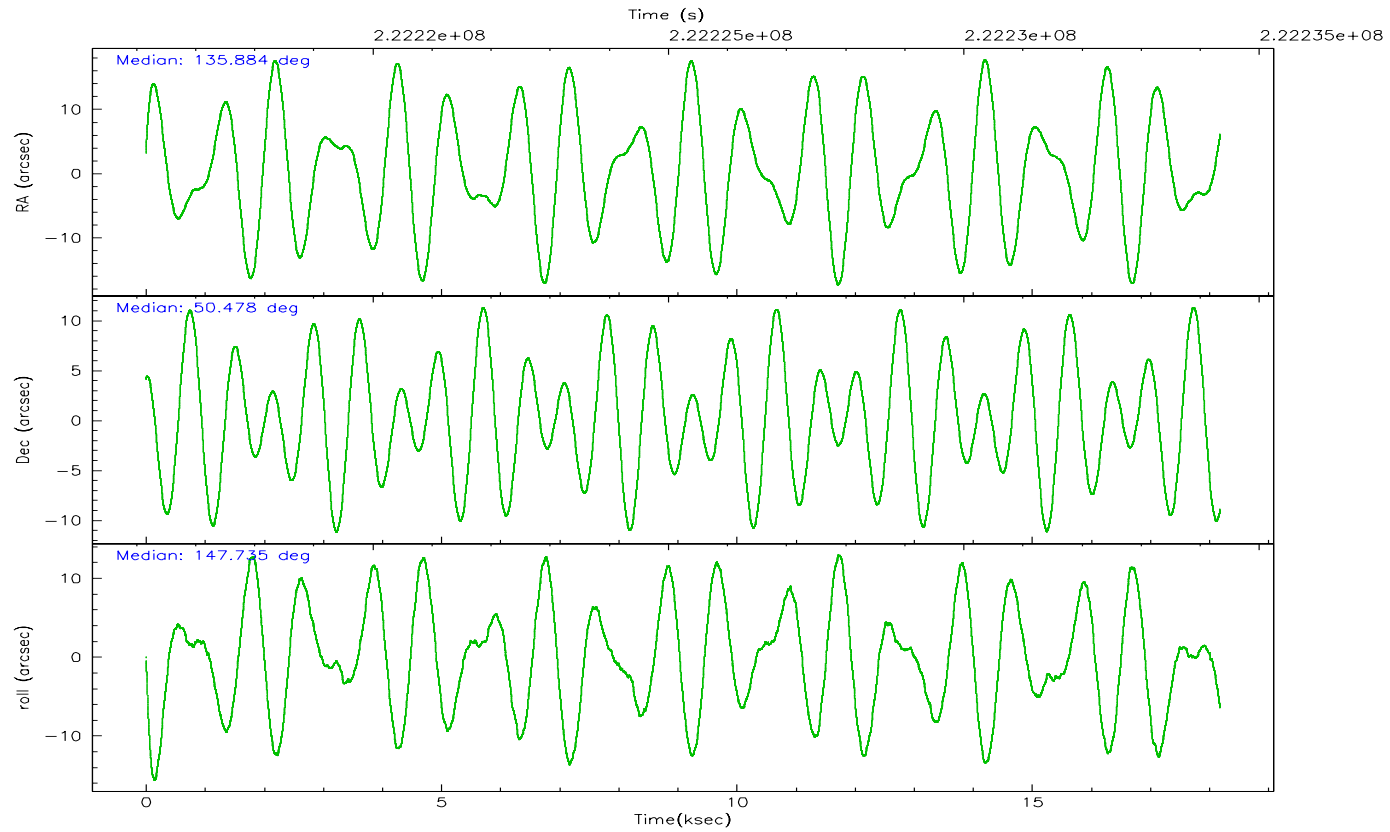
	ccd 2	ccd 3	ccd 6	ccd 7	ccd 8
grade 0 events	14972	13712	13257	5850	42846
	8%	7%	6%	2%	14%
grade 1 events	141	108	128	158	379
	0%	0%	0%	0%	0%
grade 2 events	7003	7067	7735	23024	19894
	3%	3%	4%	11%	6%
grade 3 events	2492	2557	2545	4390	19081
	1%	1%	1%	2%	6%
grade 4 events	2754	2602	2447	4320	17144
	1%	1%	1%	2%	5%
grade 5 events	5470	6233	6628	12790	9332
	2%	3%	3%	6%	3%
grade 6 events	7600	8060	9337	48679	27042
	4%	4%	4%	23%	9%
grade 7 events	143361	139377	150870	107662	158193
	78%	77%	78%	52%	53%

2.2 Compared Parameters

Parameter	Planned	Actual	Parameter	Planned	Actual
Instrument	ACIS	ACIS	Obspar format version number	6	6
Detector	ACIS-23678	ACIS-23678	Obspar file type	PREDICTED	ACTUAL
Grating	NONE	NONE	Obspar update status	NONE	UPDATED
Data mode	VFAINT	VFAINT	On-chip summing requested	N	N
Observation mode	POINTING	POINTING	Subarray requested	NONE	NONE
Pointing RA	135.926956	135.8842175434661	Alternating exposures requested	N	N
Pointing Dec	50.477798	50.47848460873837	Primary exposure time	0.000000	3.1
Pointing Roll	147.551289	147.7408884108075			
SIM focus pos (mm)	-0.684267	-0.6828225247311905			
SIM defocus (mm)	0	0.001444936568705701			
SIM translation stage pos (mm)	-190.132523	-190.1400660498719			
SIM translation stage offset (mm)	0	0.00754346686406393			
Observation start time	222216338.184000	222215081.94517			
Observation start date	2005-01-15T22:44:34	2005-01-15T22:24:41			
Observation end time	222234338.184000	222235512.24609			
Observation end date	2005-01-16T03:44:34	2005-01-16T04:05:12			
Read mode	TIMED	TIMED			

2.3 Aspect



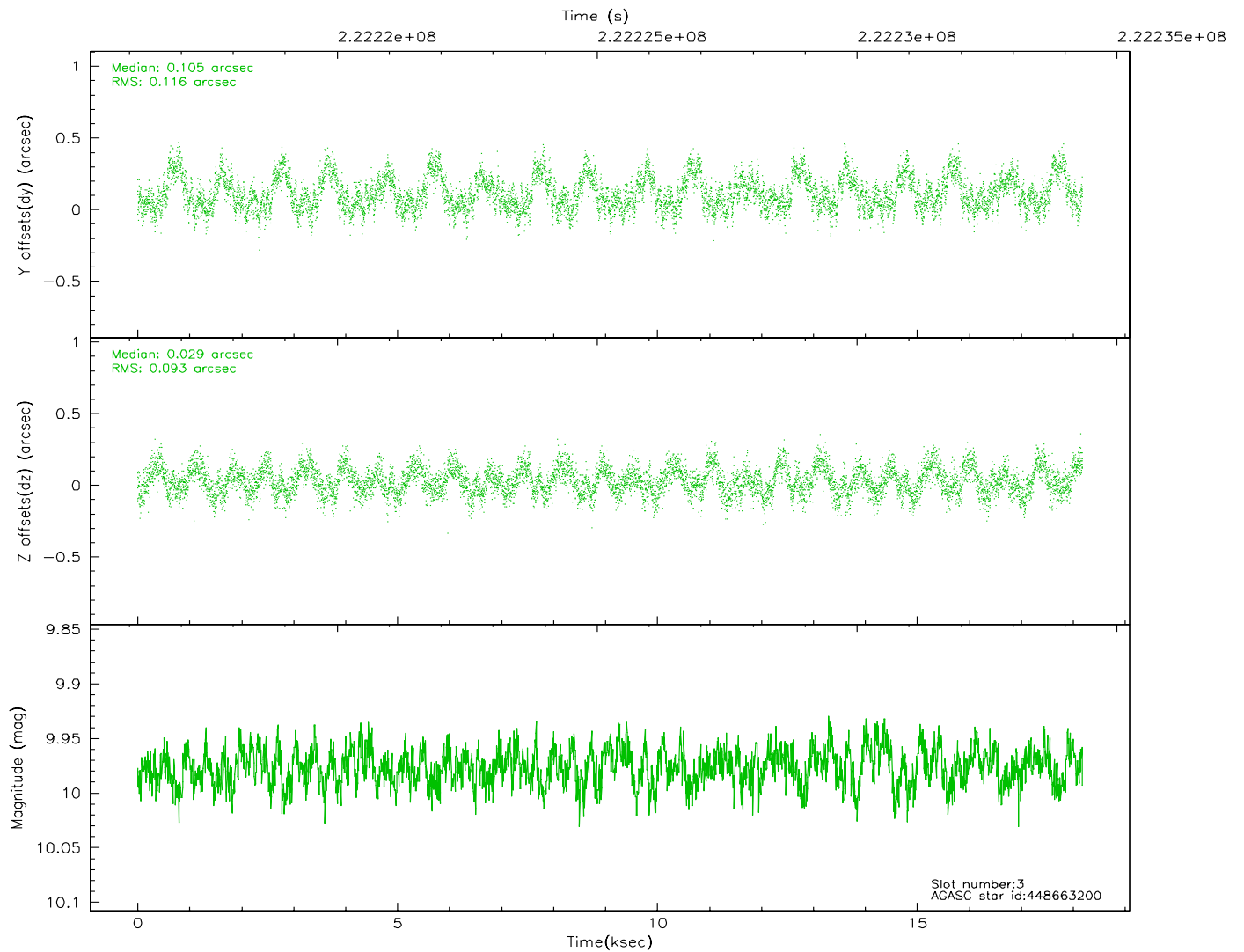
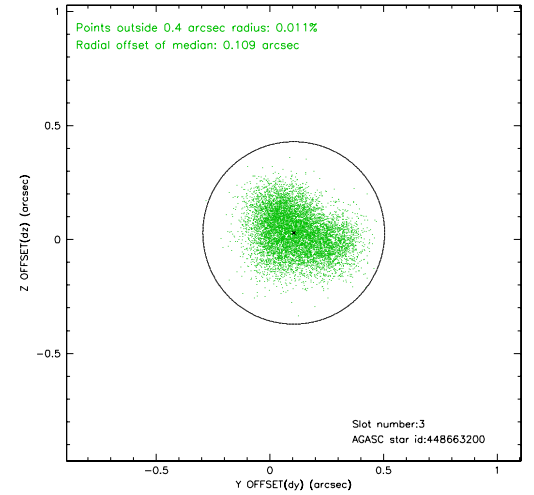
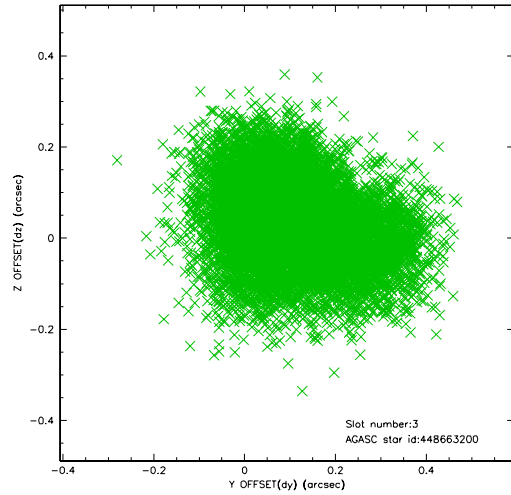


Slot Statistics

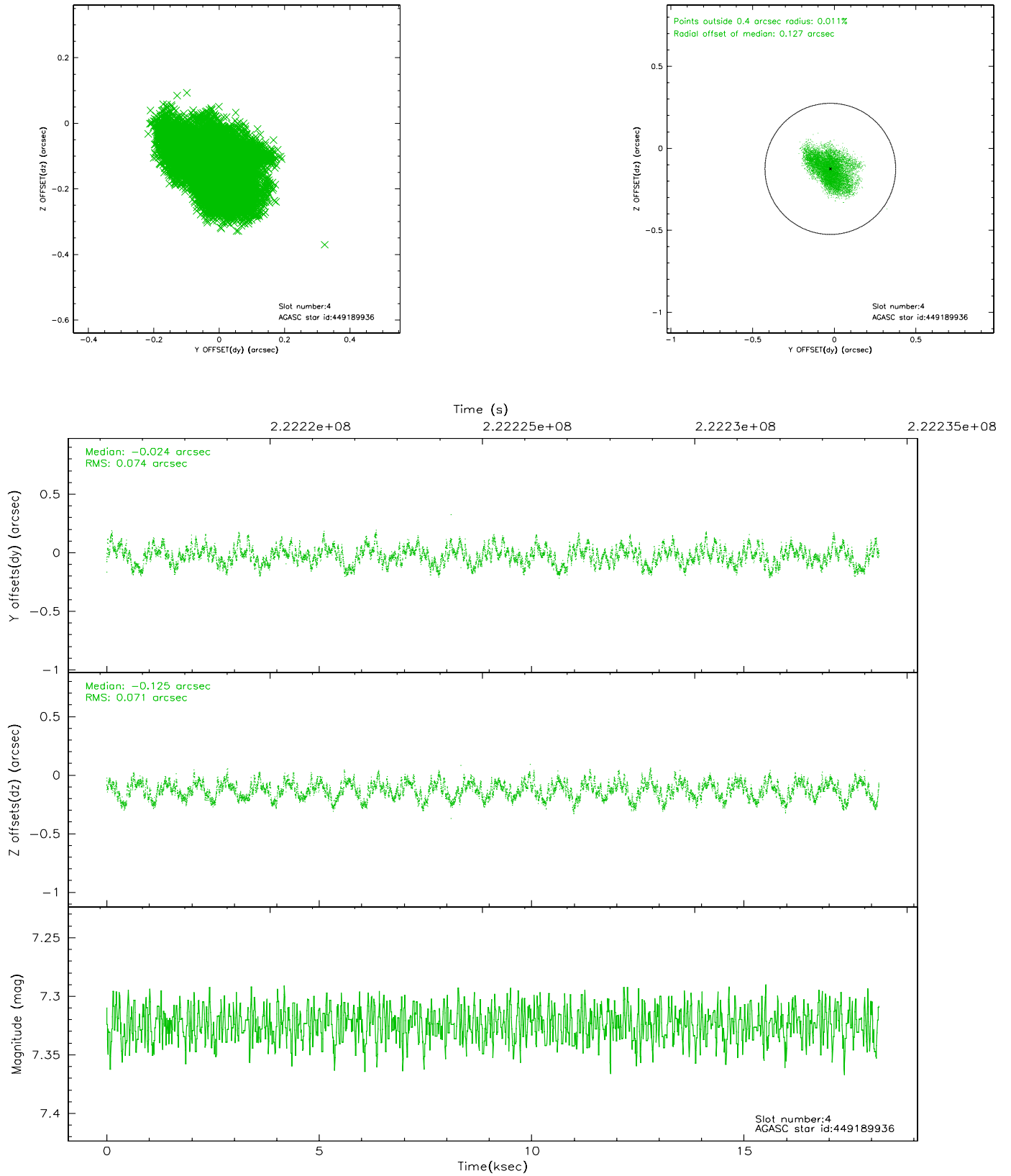
slot	status	id	mag	n_pts	med_dy	med_dz	dr1	dr2	ra	dec	mean_y	mean_z
0	FID	ACIS-S-2	7.10	4435	-0.053	-0.032	0.007	0.011	0.000000	0.000000	-758.70	-1730.37
1	FID	ACIS-S-4	7.21	4435	0.076	0.034	0.005	0.009	0.000000	0.000000	2154.60	177.96
2	FID	ACIS-S-5	7.23	4435	-0.054	0.007	0.007	0.011	0.000000	0.000000	-1811.26	171.84
3	GUIDE	448663200	9.98	8848	0.105	0.029	0.160	0.252	134.711180	50.224045	1885.38	2254.51
4	GUIDE	449189936	7.32	8871	-0.024	-0.125	0.112	0.174	135.761845	49.948243	-699.51	1813.86
5	GUIDE	449578736	8.53	8871	-0.034	0.108	0.066	0.106	135.185163	50.928799	2296.24	-473.34
6	GUIDE	449580392	9.27	8866	-0.070	0.118	0.093	0.151	136.586076	50.962265	-321.15	-2279.12
7	GUIDE	449587064	6.99	8868	0.012	-0.125	0.054	0.088	136.328139	50.823788	-99.59	-1542.42

2.4 Star Slots

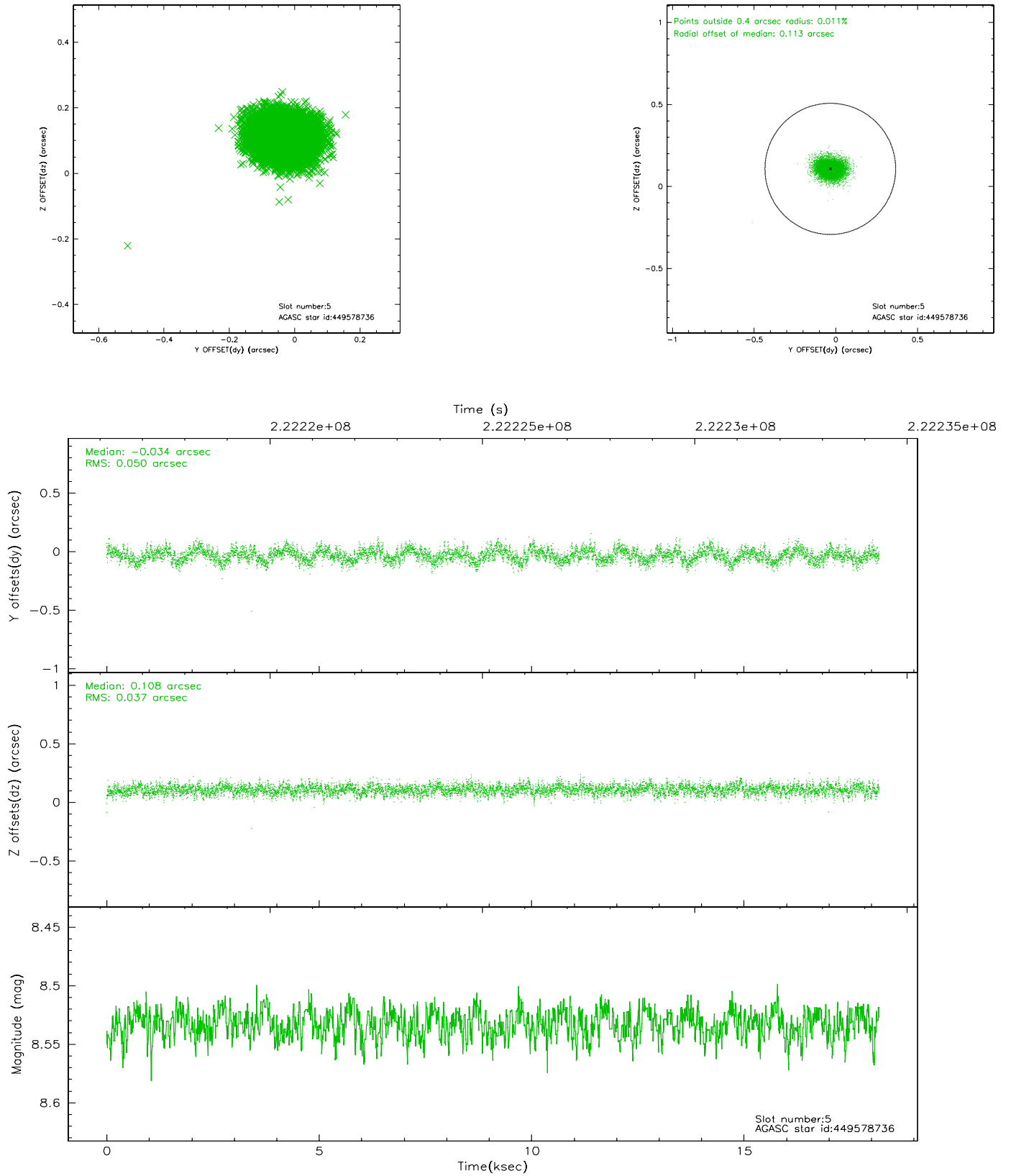
2.4.1 Slot 3



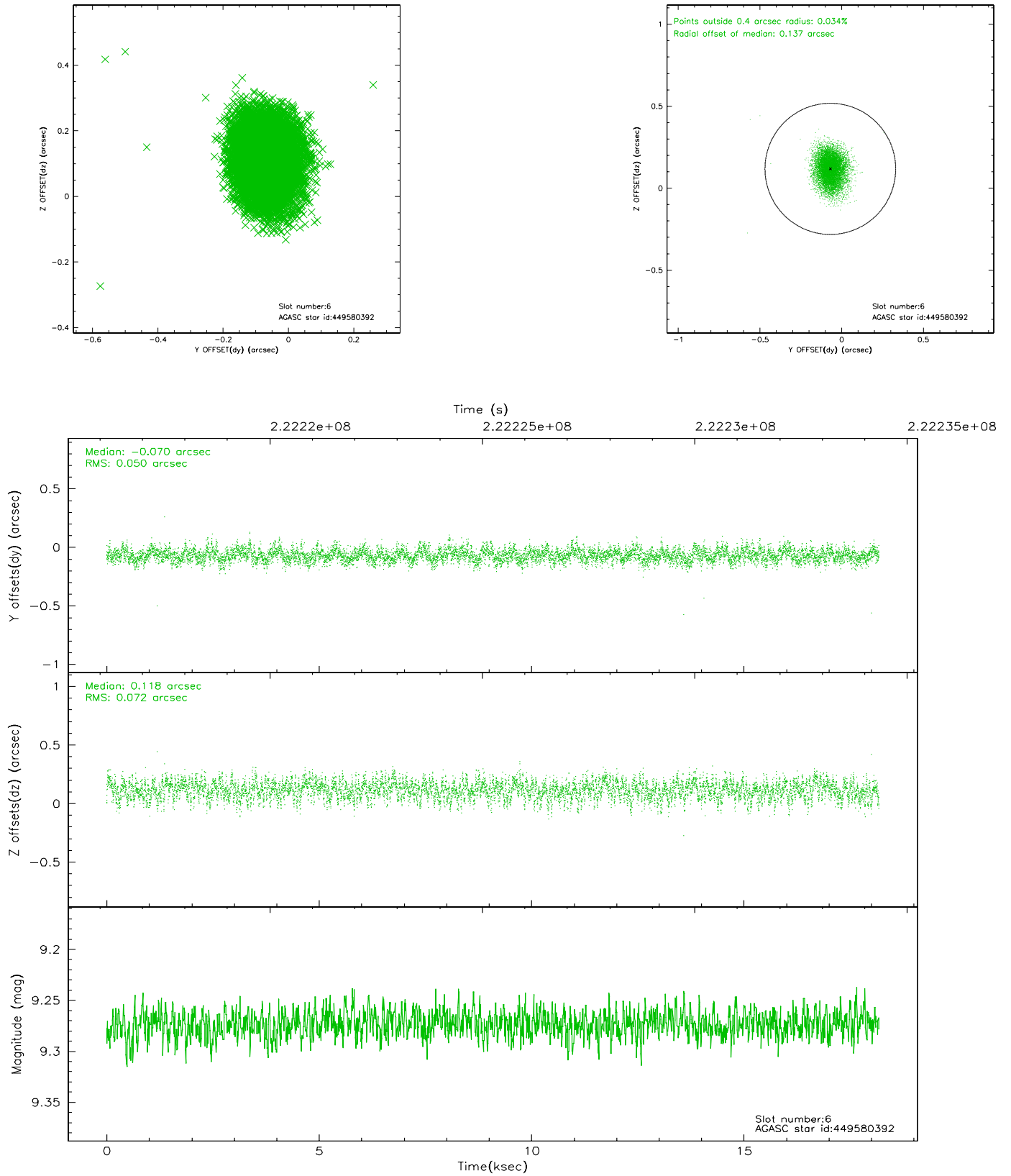
2.4.2 Slot 4



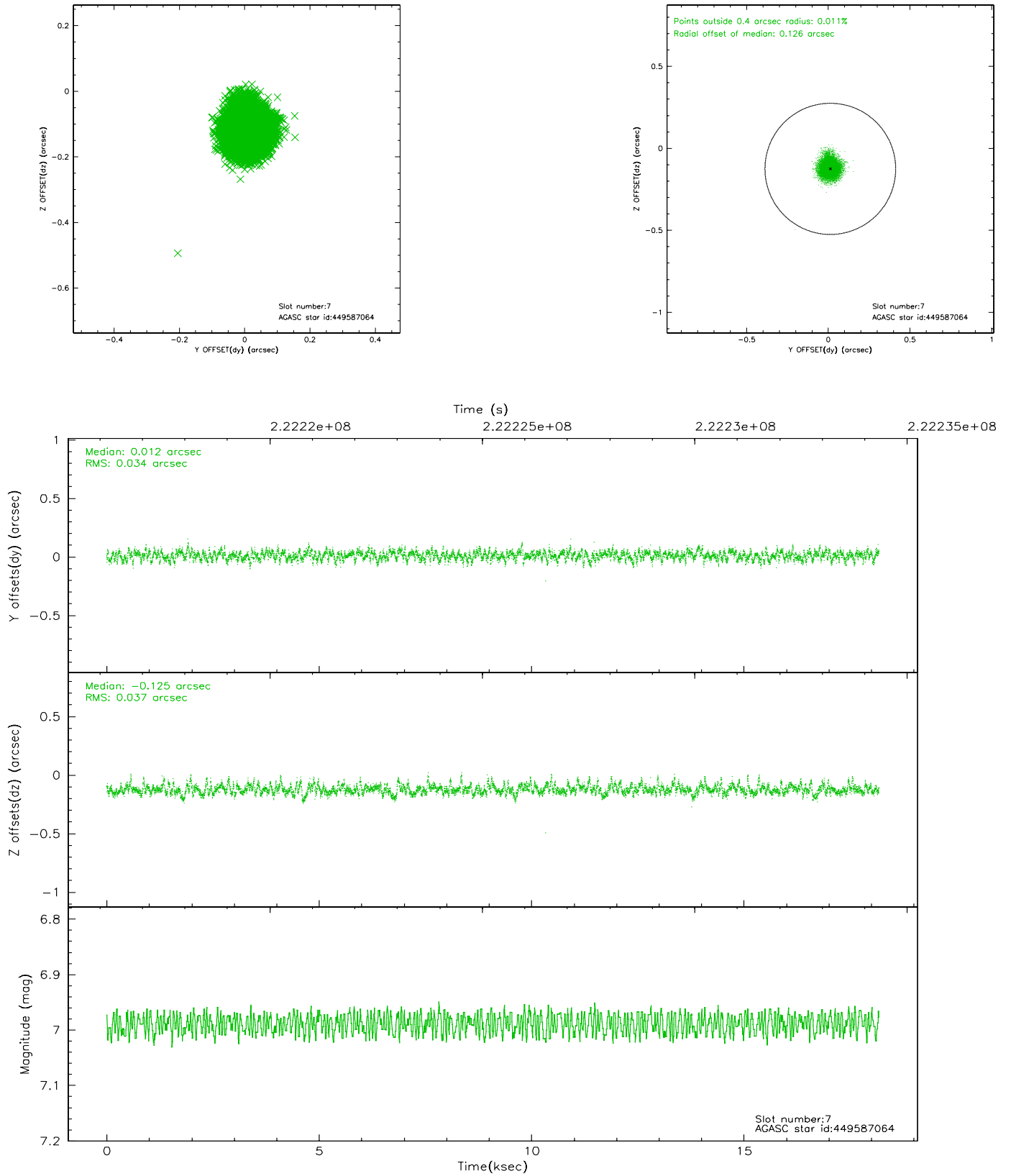
2.4.3 Slot 5



2.4.4 Slot 6

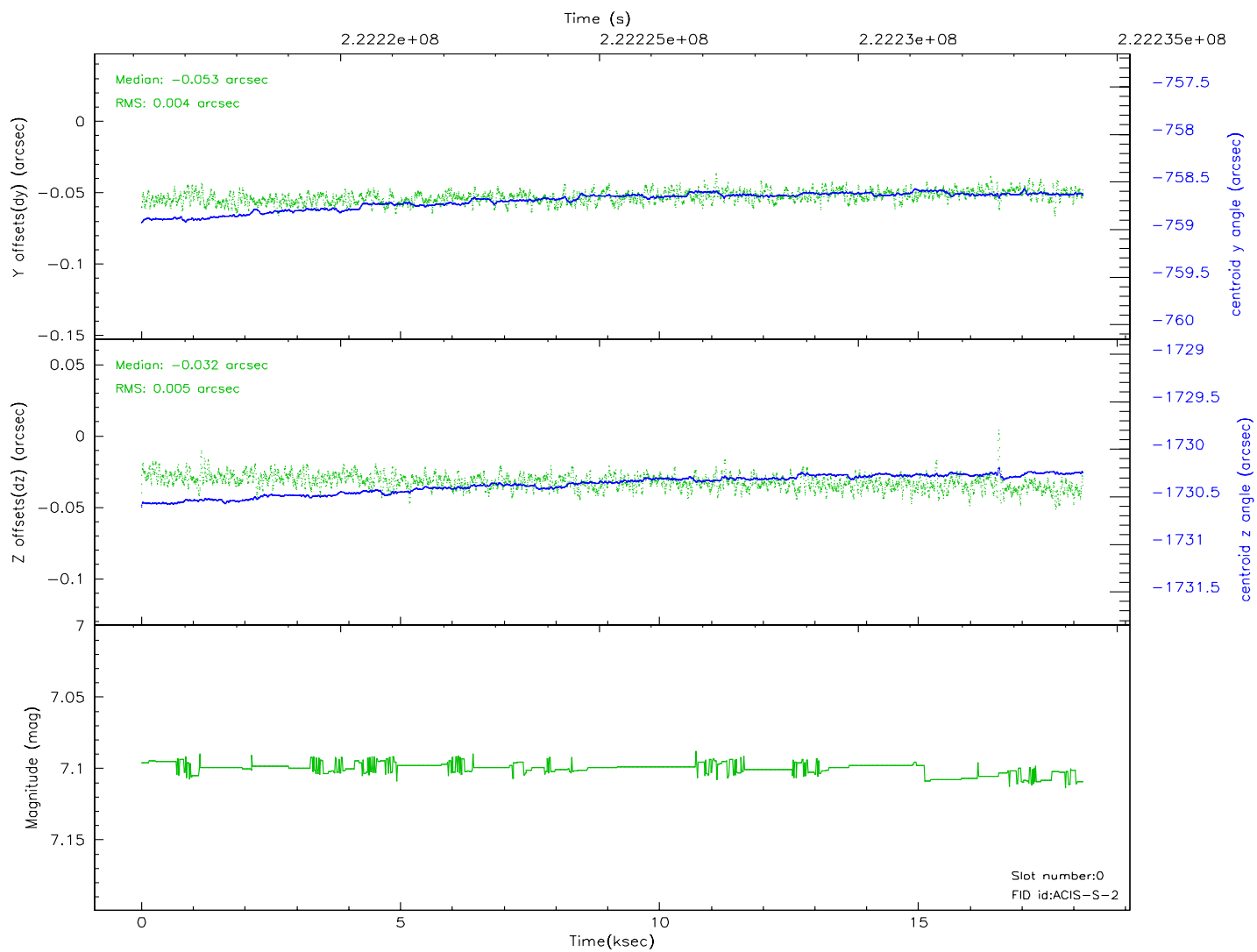
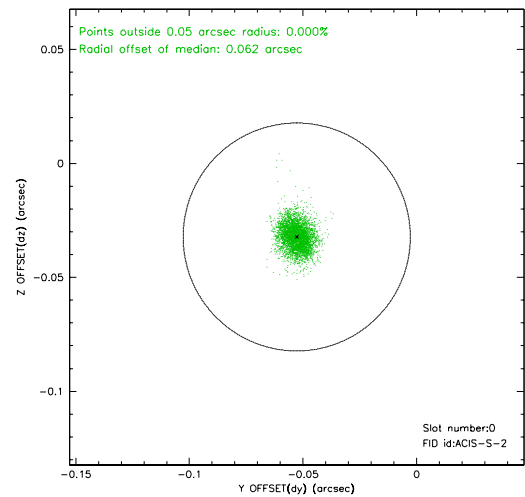
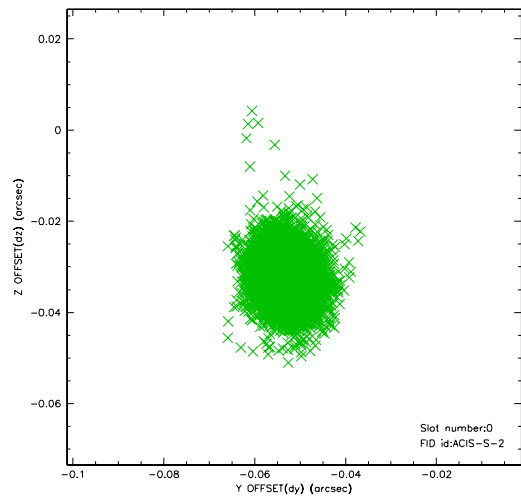


2.4.5 Slot 7

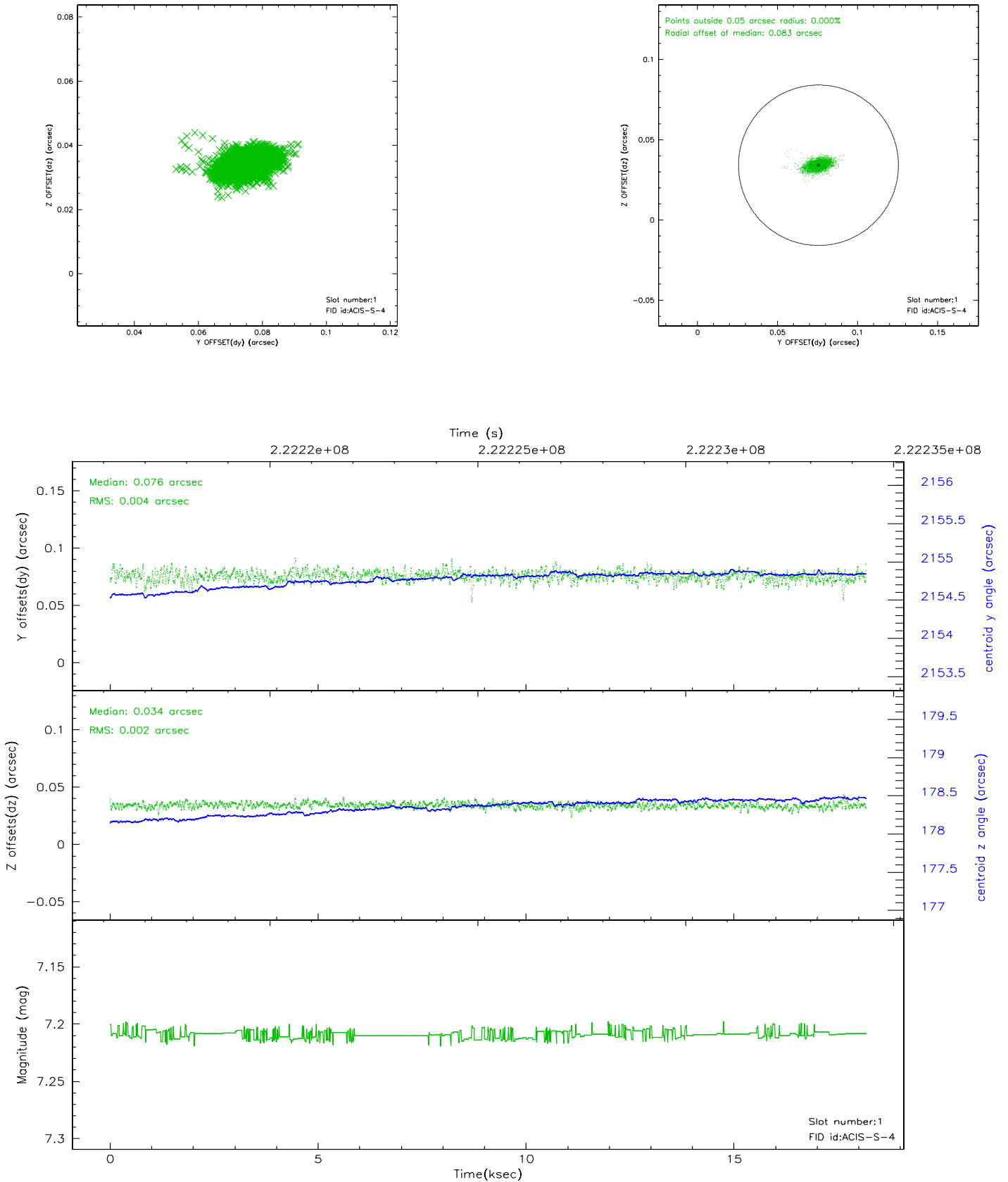


2.5 FID Slots

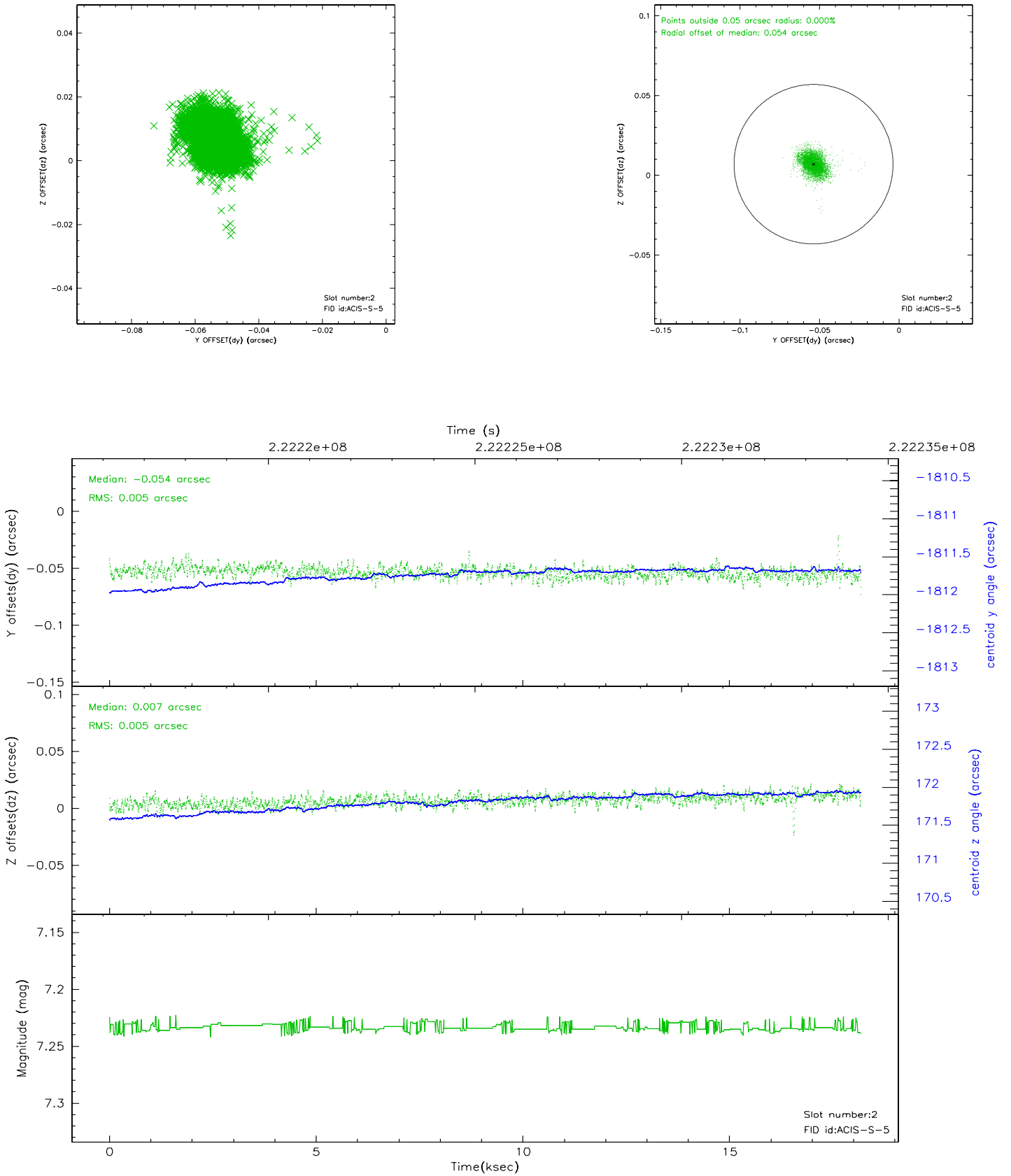
2.5.1 Slot 0



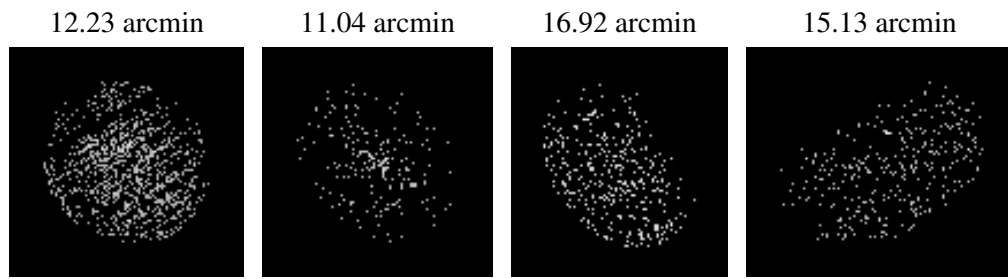
2.5.2 Slot 1



2.5.3 Slot 2



3 Point Sources



A Summary

A.1 Status

V&V Scientist	Beth Sundheim
V&V Date (YYYY-MM-DD)	2006.02.17
V&V Edition	1
V&V Disposition and Status	OK
V&V Charge Time	18.17839

A.2 Comments

Charge time:

Using existing charge time of 18.17839.

Focal plane temperature rises during observation.