

V&V Reference Report

L2 ASCDS Version : 8.4.3

Observation 7224 - L2 Version 2
Chandra X-Ray Center

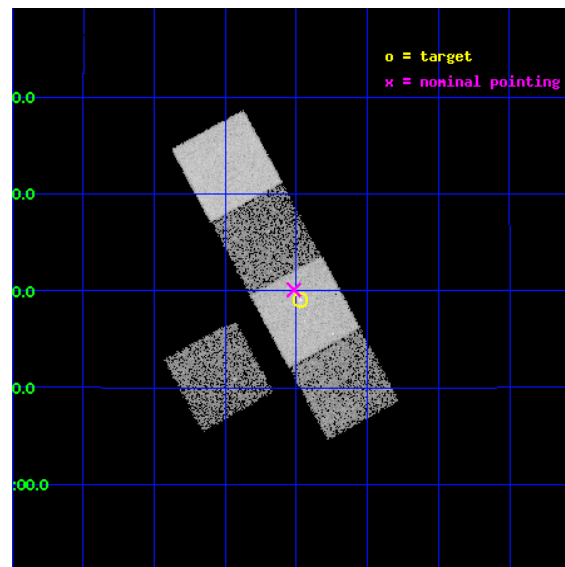
L2 Processing Date : Mar 17 2012

Contents

1	Front	2
2	OBI	3
2.1	OBI	3
2.1.1	Images	3
2.1.2	Bias	3
2.1.3	Parameters	4
2.1.4	Events	4
2.2	Compared Parameters	5
2.3	Aspect	6
2.4	Star Slots	9
2.4.1	Slot 3	9
2.4.2	Slot 4	10
2.4.3	Slot 5	11
2.4.4	Slot 6	12
2.4.5	Slot 7	13
2.5	FID Slots	14
2.5.1	Slot 0	14
2.5.2	Slot 1	15
2.5.3	Slot 2	16
A	Summary	17
A.1	Status	17
A.2	Comments	17

1 Front

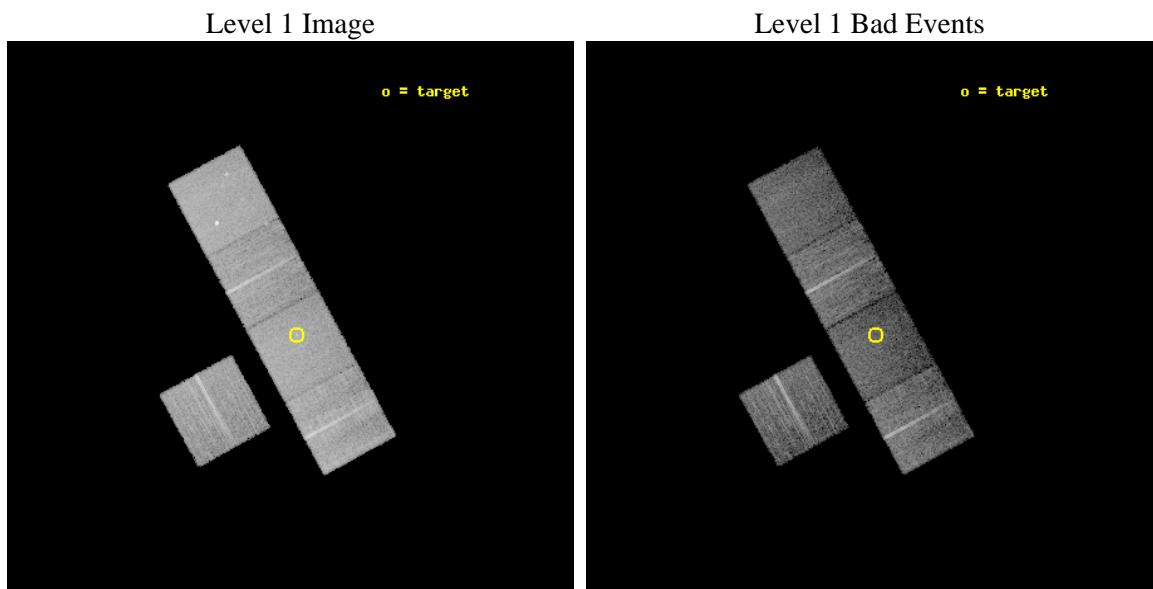
seq_num	600443	Sequence number
obs_id	7224	Observation id
title	Low Mass X-ray Binaries and Globular Clusters in the Early-Type Galaxy NGC 4365	Proposal title
observer	Prof. Gregory Sivakoff	Principal investigator
object	NGC4365	Source name
dtcycle	0	
cycle	P	events from which exps? Prim/Second/Both
ra_targ	186.117917	Observer's specified target RA [deg]
dec_targ	7.317722	Observer's specified target Dec [deg]
ra_nom	186.12936960002	Nominal RA [deg]
dec_nom	7.3350913357836	Nominal Dec [deg]
roll_nom	61.455192756556	Nominal Roll [deg]
revision	2	Processing version of data
ontime	10136.999980479	Sum of GTIs [s]
livetime	10004.552612984	Livetime [s]
ontime3	10136.999980479	Sum of GTIs [s]
ontime5	10136.999980479	Sum of GTIs [s]
ontime6	10136.999980479	Sum of GTIs [s]
ontime7	10136.999980479	Sum of GTIs [s]
ontime8	10136.999980479	Sum of GTIs [s]
l2events	99433	Number of level 2 events



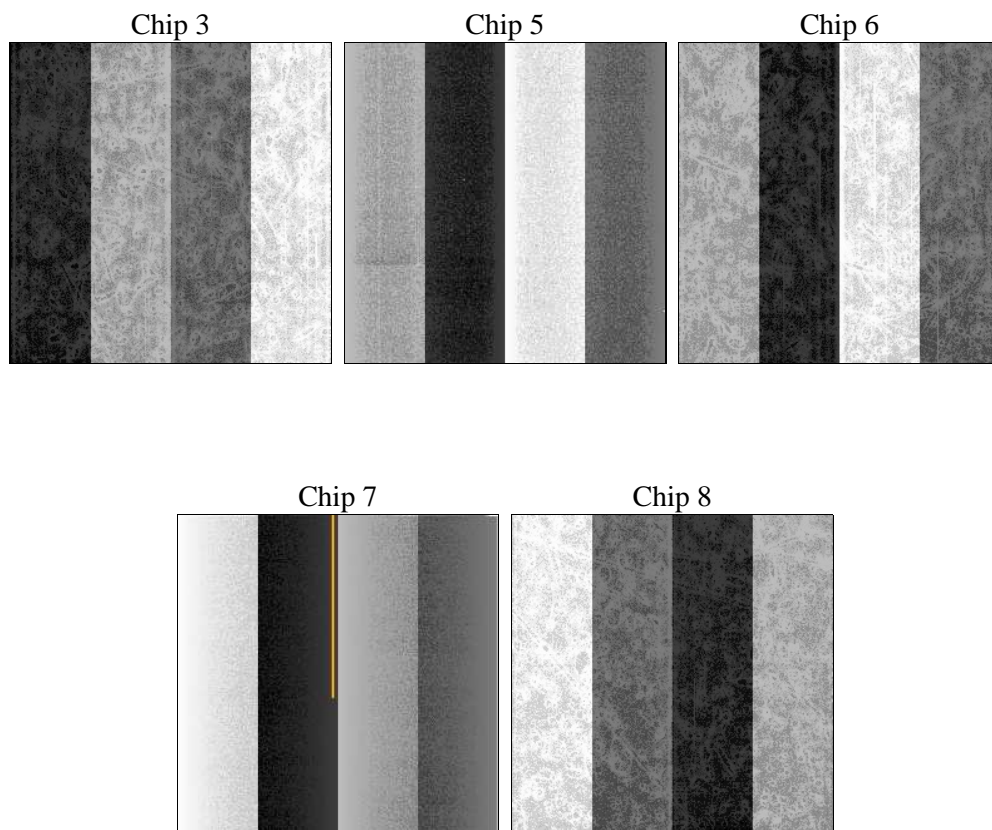
2 OBI

2.1 OBI

2.1.1 Images



2.1.2 Bias



2.1.3 Parameters

obi_num	0	Obi number	sched_exp_time	10000.000000	[s] Scheduled observation exposure time
ascdsver	8.4.3	Processing system revision	ontime	10136.999980479	Sum of GTIs [s]
caldsver	4.4.8	 	ontime3	10136.999980479	Sum of GTIs [s]
date	2012-03-17T15:52:53	Date and time of file creation	ontime5	10136.999980479	Sum of GTIs [s]
revision	2	Processing version of data	ontime6	10136.999980479	Sum of GTIs [s]
			ontime7	10136.999980479	Sum of GTIs [s]
			ontime8	10136.999980479	Sum of GTIs [s]
			l1events	417797	Number of level 1 events

2.1.4 Events

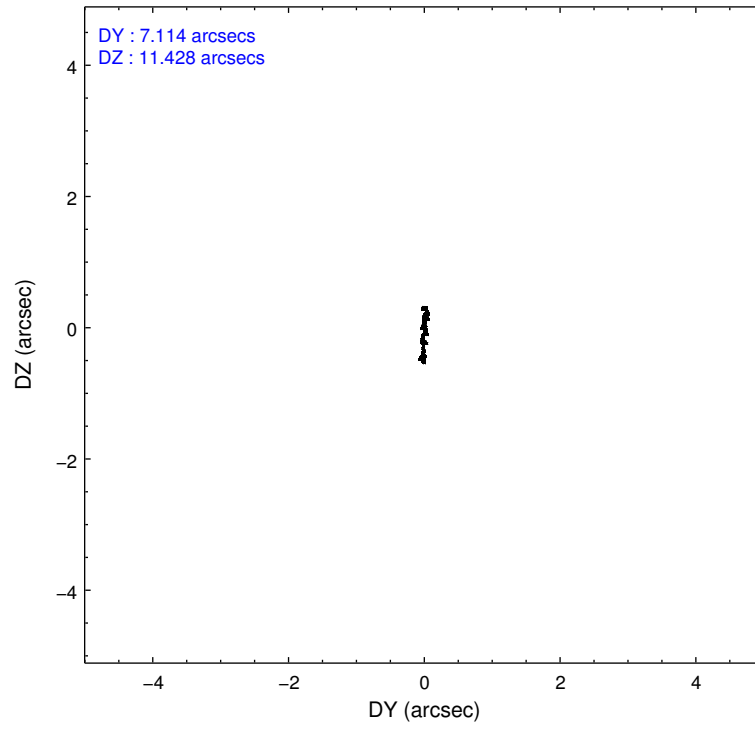
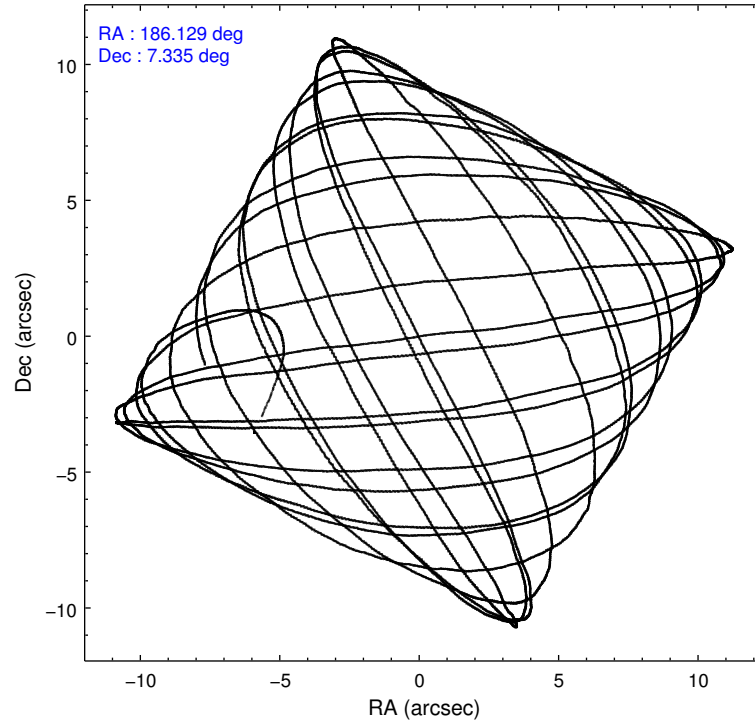
	ccd 3	ccd 5	ccd 6	ccd 7	ccd 8
level 1 events	71405	99535	74043	82270	90544
rejected events	64985	52177	66679	45586	69671
rejected %	91%	52%	90%	55%	76%

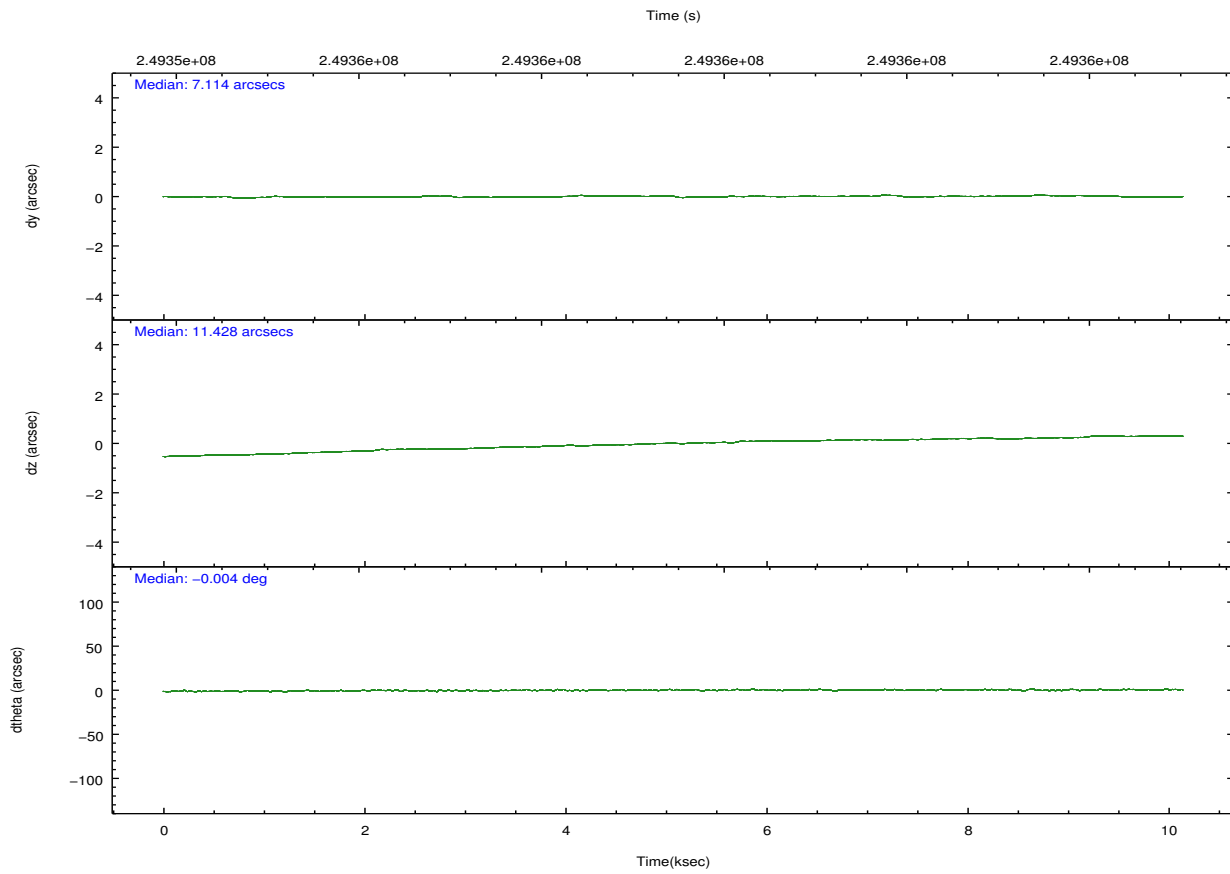
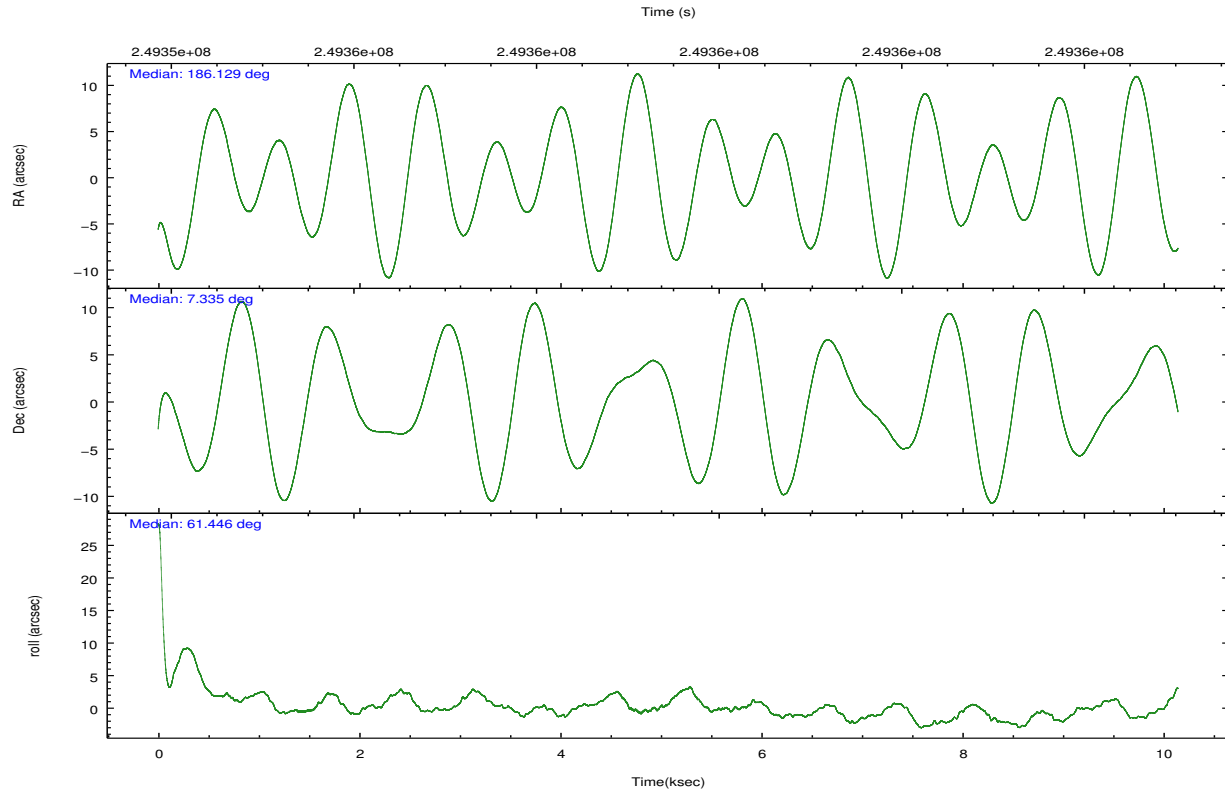
	ccd 3	ccd 5	ccd 6	ccd 7	ccd 8
grade 0 events	2428	5743	2935	4038	6775
	3%	5%	3%	4%	7%
grade 1 events	33	140	38	61	62
	0%	0%	0%	0%	0%
grade 2 events	1491	14349	1592	7909	4805
	2%	14%	2%	9%	5%
grade 3 events	750	2240	812	3645	2356
	1%	2%	1%	4%	2%
grade 4 events	745	2259	808	3647	2160
	1%	2%	1%	4%	2%
grade 5 events	2823	8038	2944	8603	4051
	3%	8%	3%	10%	4%
grade 6 events	1322	25381	1593	19345	5840
	1%	25%	2%	23%	6%
grade 7 events	61813	41385	63321	35022	64495
	86%	41%	85%	42%	71%

2.2 Compared Parameters

Parameter	Planned	Actual	Parameter	Planned	Actual
Instrument	ACIS	ACIS	Obspar format version number	7	7
Detector	ACIS-35678	ACIS-35678	Obspar file type	PREDICTED	ACTUAL
Grating	NONE	NONE	Obspar update status	NONE	UPDATED
Data mode	VFAINT	VFAINT	Number of optional ACIS chips dropped	0	0
Observation mode	POINTING	POINTING	On-chip summing requested	N	N
[deg] Pointing RA	186.130477	186.1293696000191	Subarray requested	NONE	NONE
[deg] Pointing Dec	7.307859	7.335091335783567	Alternating exposures requested	N	N
[deg] Pointing Roll	61.298402	61.45519275655612	[s] Primary exposure time	0.000000	3.1
[mm] SIM focus pos	-0.684267	-0.6828225247311905			
[mm] SIM defocus	0	0.001444936568705701			
[mm] SIM translation stage pos	-190.132523	-190.1400660498719			
[mm] SIM translation stage offset	0	0.00754346686406393			
[s] Observation start time (MET)	249354505.184000	249353258.90969			
Observation start date	2005-11-26T01:07:21	2005-11-26T00:47:38			
[s] Observation end time (MET)	249364505.184000	249365450.77275			
Observation end date	2005-11-26T03:54:01	2005-11-26T04:10:50			
Read mode	TIMED	TIMED			

2.3 Aspect



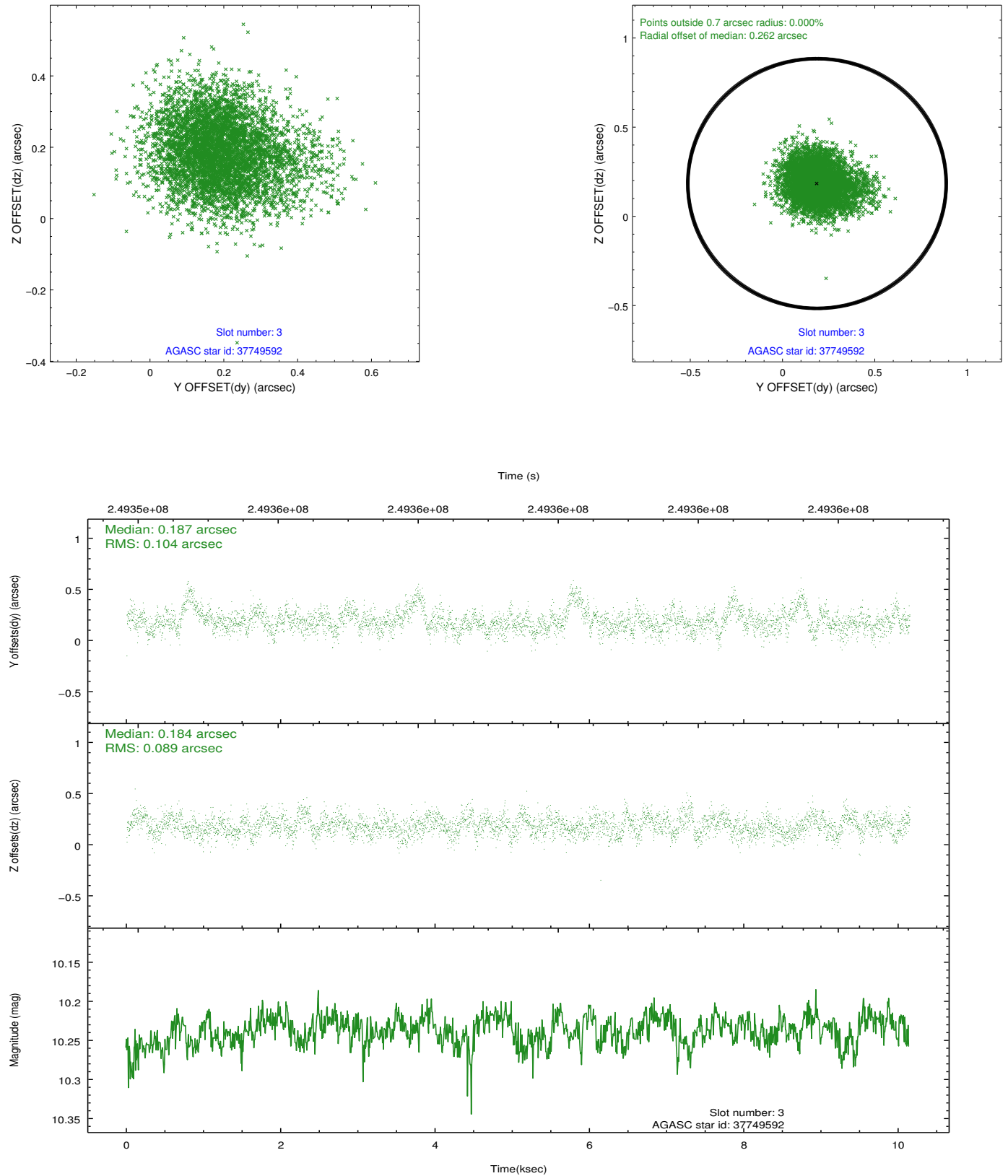


Slot Statistics

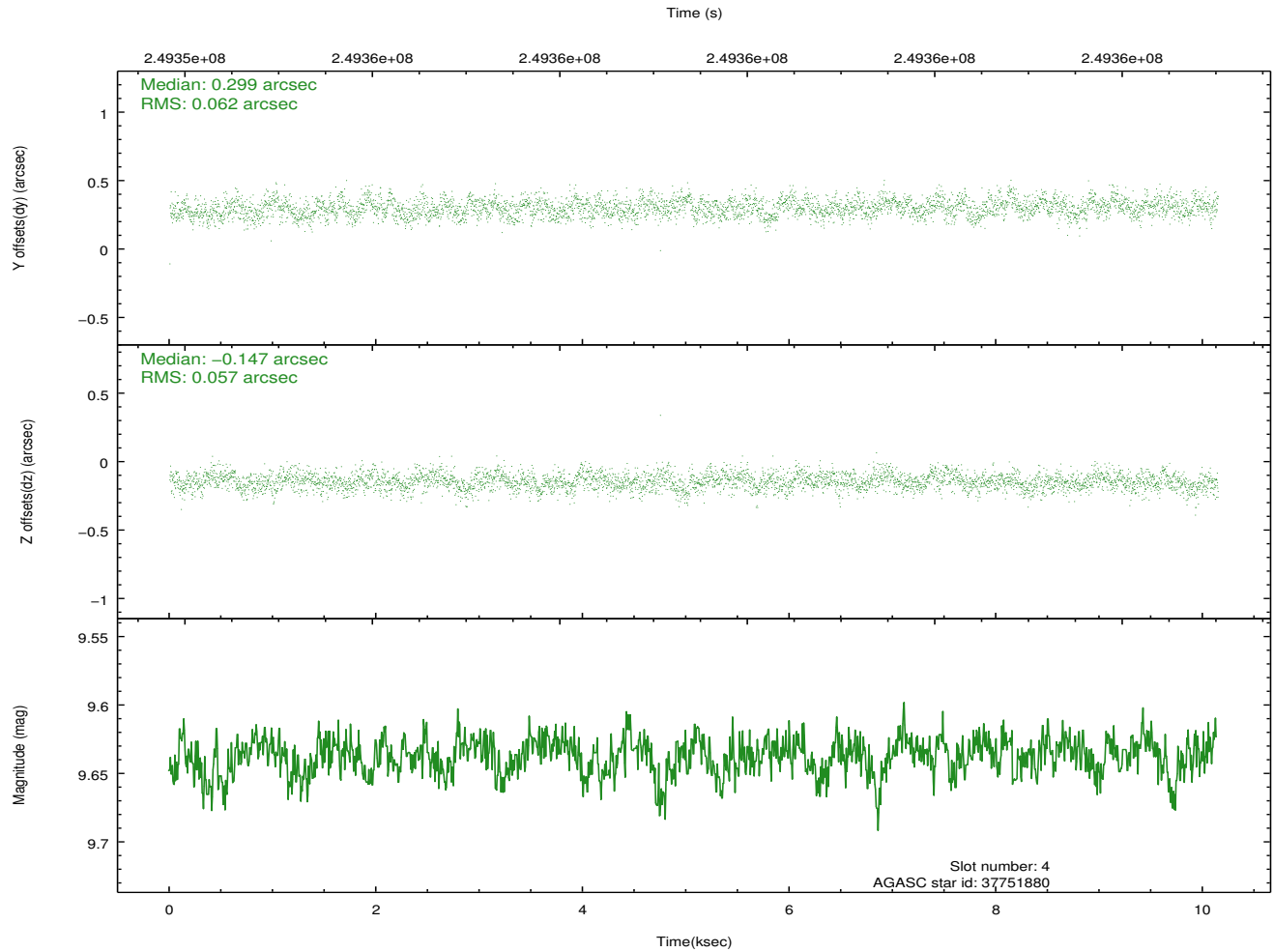
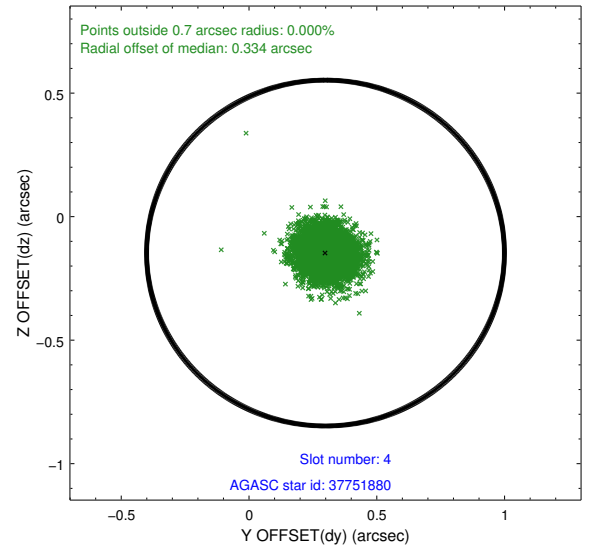
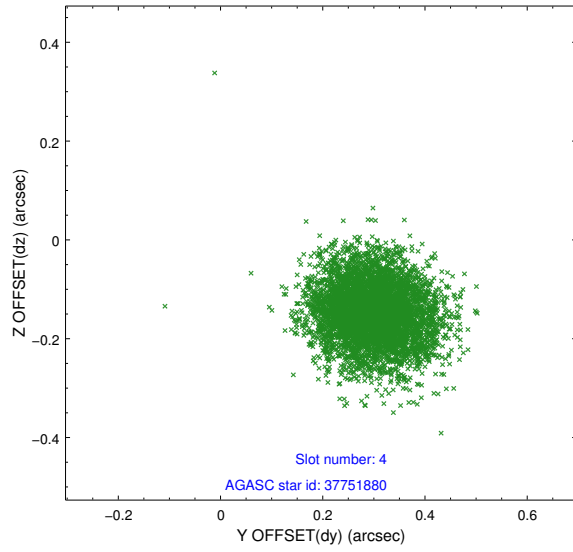
slot	status	id	mag	n_pts	med_dy	med_dz	dr1	dr2	ra	dec	mean_y	mean_z
0	FID	ACIS-S-2	7.10	2475	-0.063	-0.049	0.007	0.012	0.000000	0.000000	-759.92	-1732.72
1	FID	ACIS-S-4	7.21	2475	0.075	0.019	0.007	0.011	0.000000	0.000000	2153.25	175.31
2	FID	ACIS-S-6	7.35	2475	-0.040	0.037	0.007	0.011	0.000000	0.000000	402.74	813.31
3	GUIDE	37749592	10.24	4941	0.187	0.184	0.143	0.240	186.177253	6.631115	-2056.26	-1315.52
4	GUIDE	37751880	9.64	4945	0.299	-0.147	0.090	0.142	185.771871	6.844190	-2079.19	322.39
5	GUIDE	37753024	8.00	4949	-0.274	0.348	0.075	0.121	186.830113	7.241612	992.45	-2304.17
6	GUIDE	114565080	10.20	4944	-0.187	0.063	0.150	0.244	186.537681	7.759404	2124.40	-492.96
7	GUIDE	114434008	8.78	4944	-0.030	-0.446	0.084	0.135	185.534773	7.569663	-192.78	2317.72

2.4 Star Slots

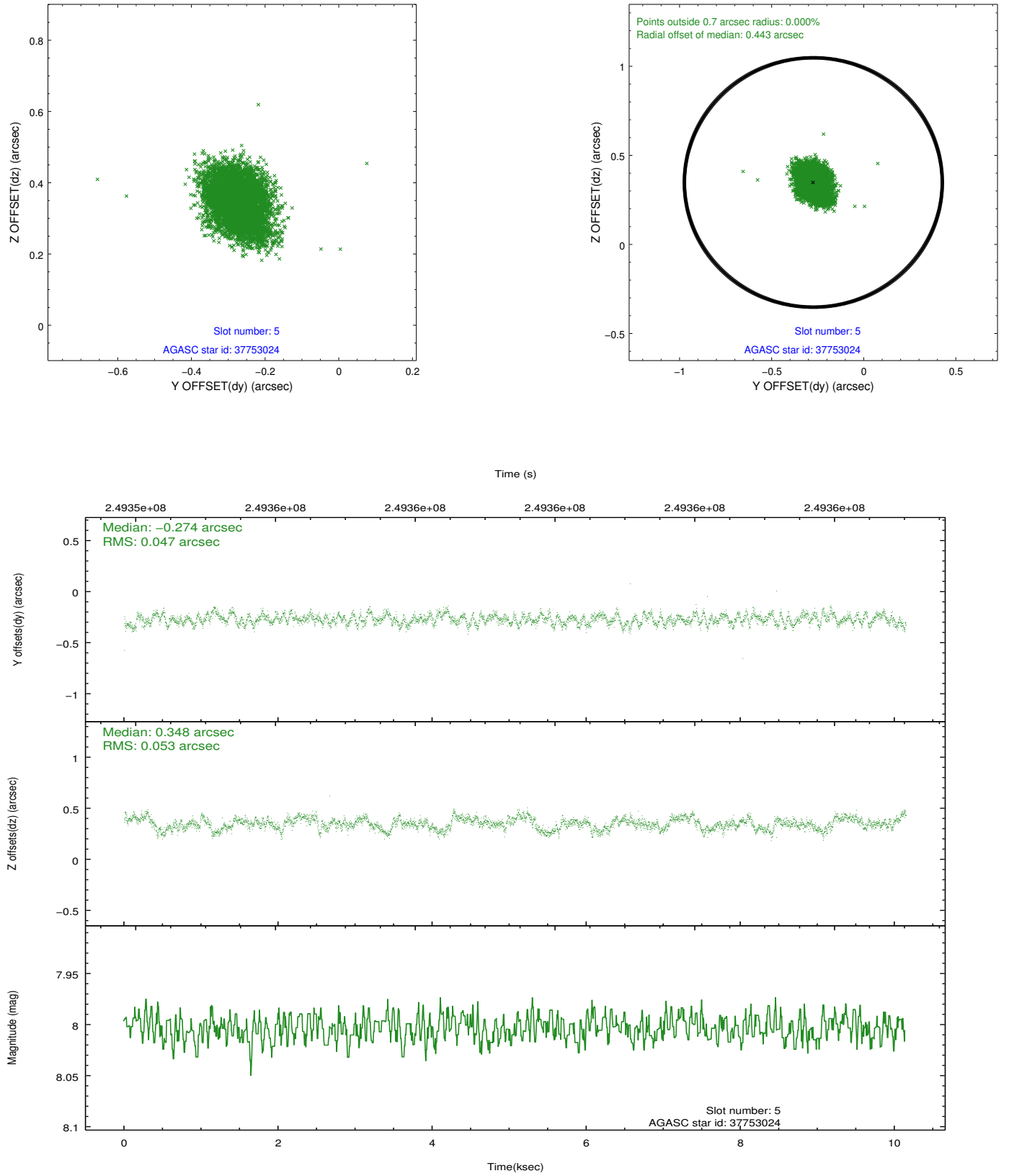
2.4.1 Slot 3



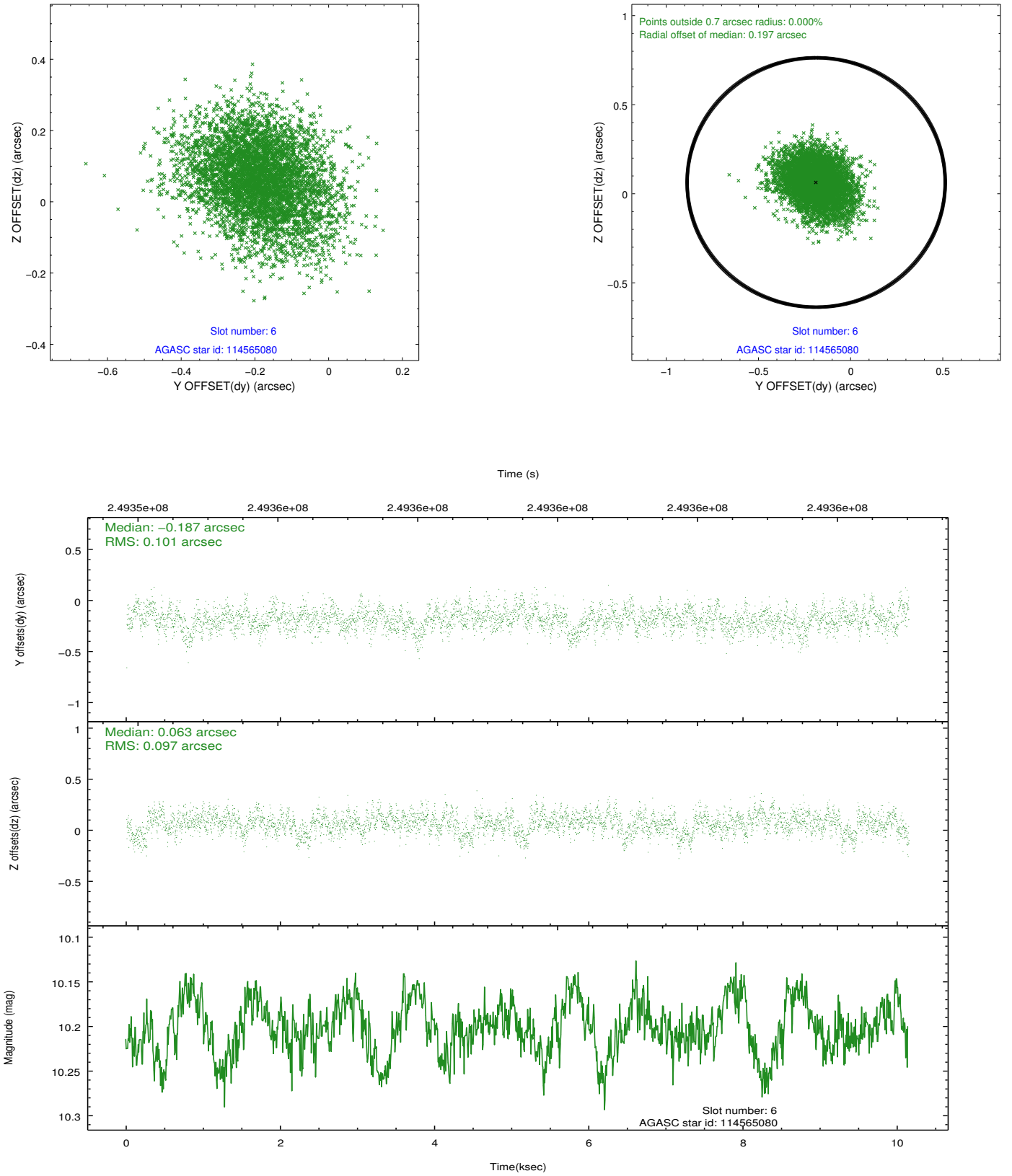
2.4.2 Slot 4



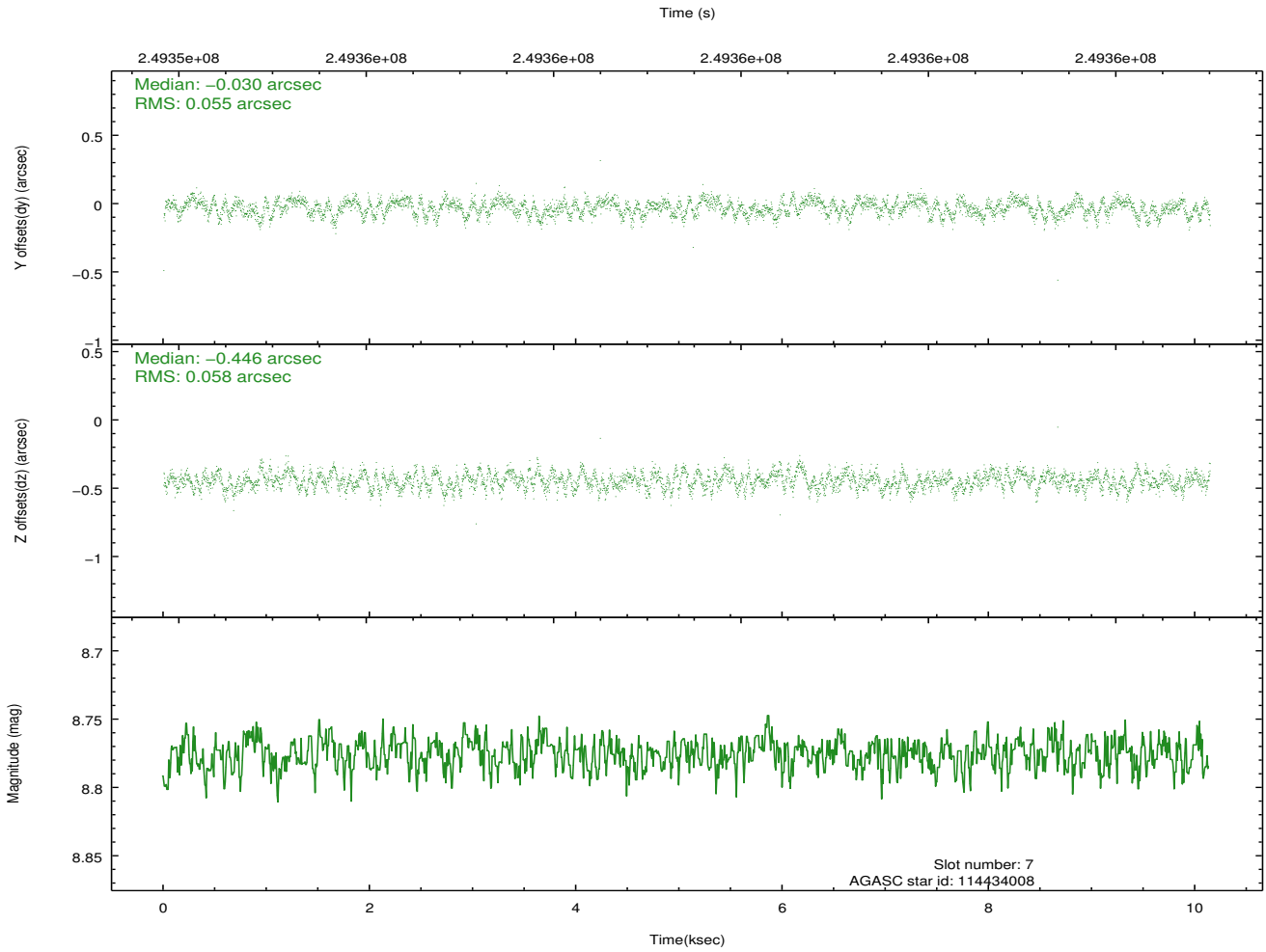
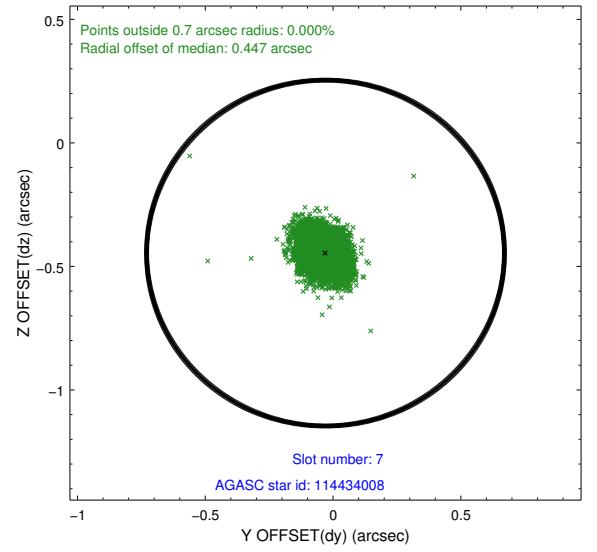
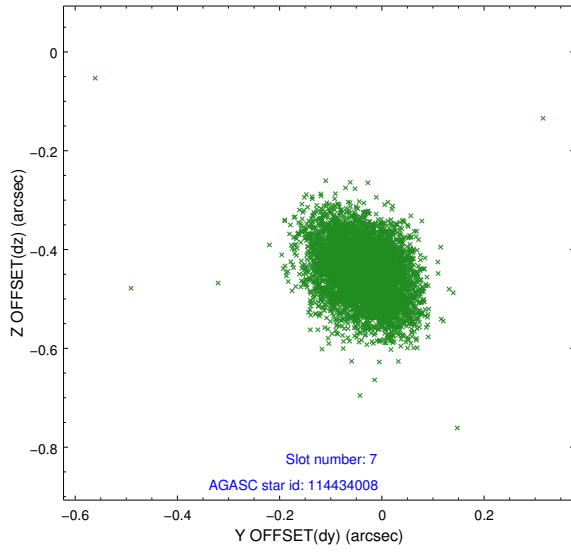
2.4.3 Slot 5



2.4.4 Slot 6

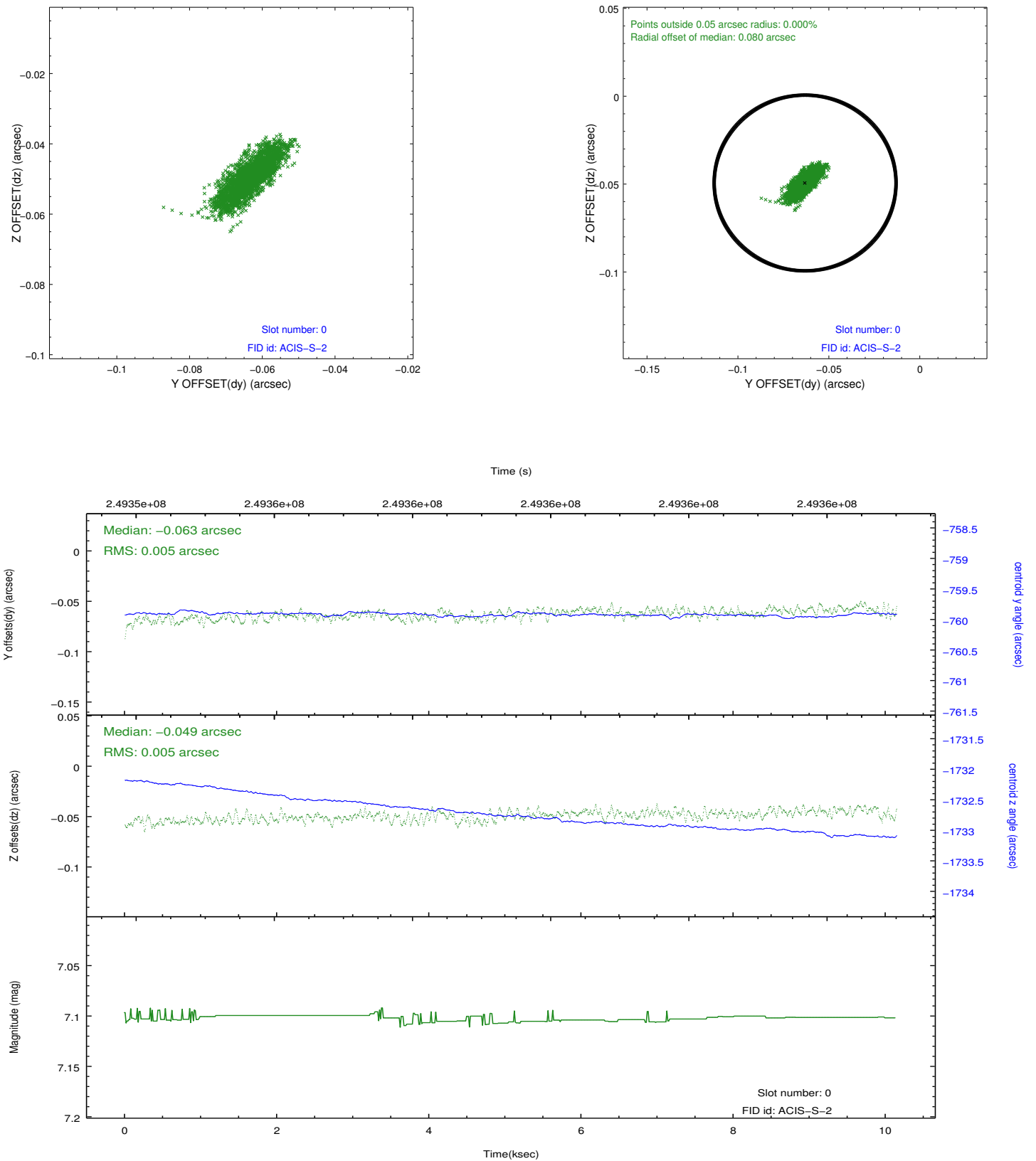


2.4.5 Slot 7

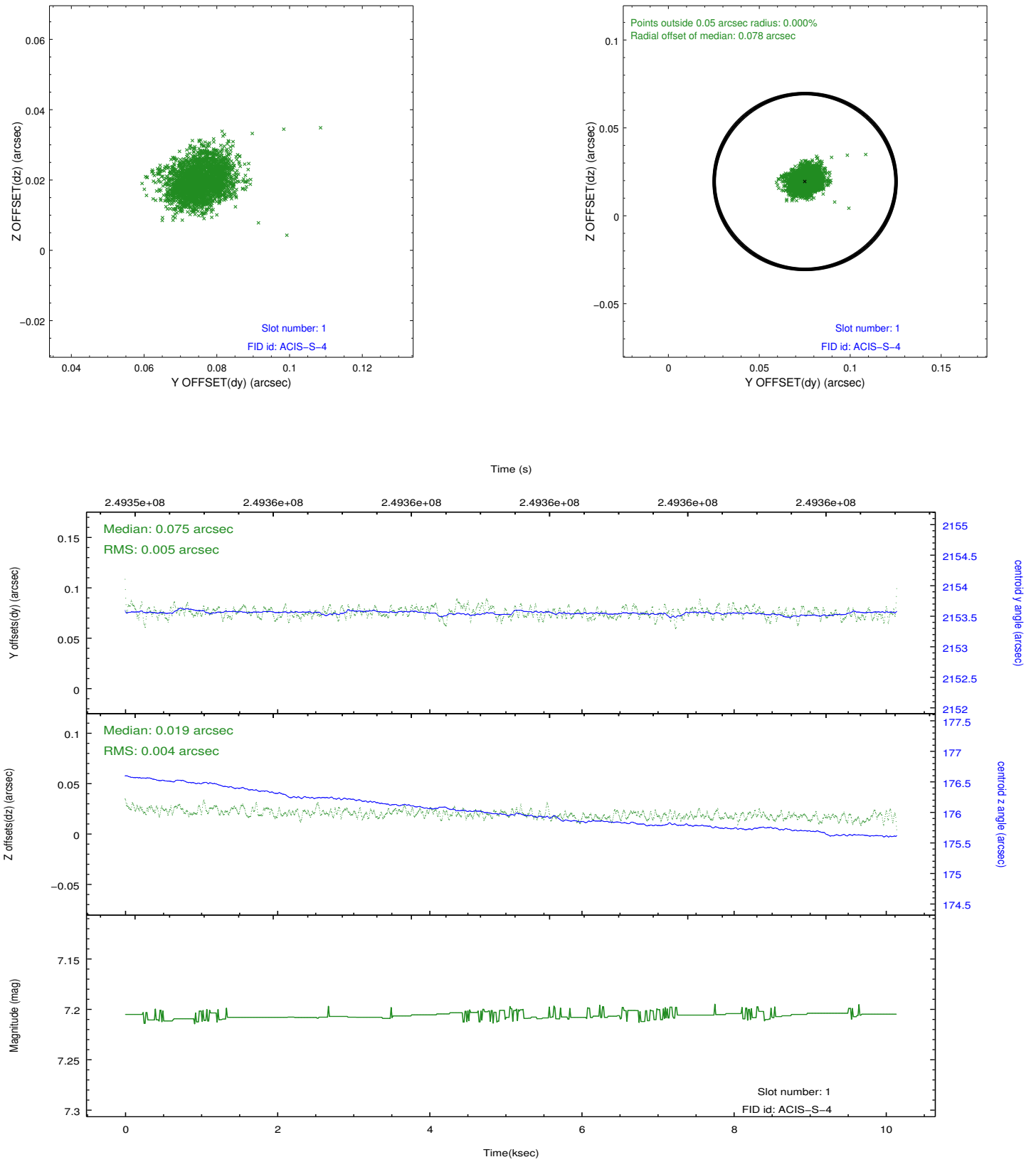


2.5 FID Slots

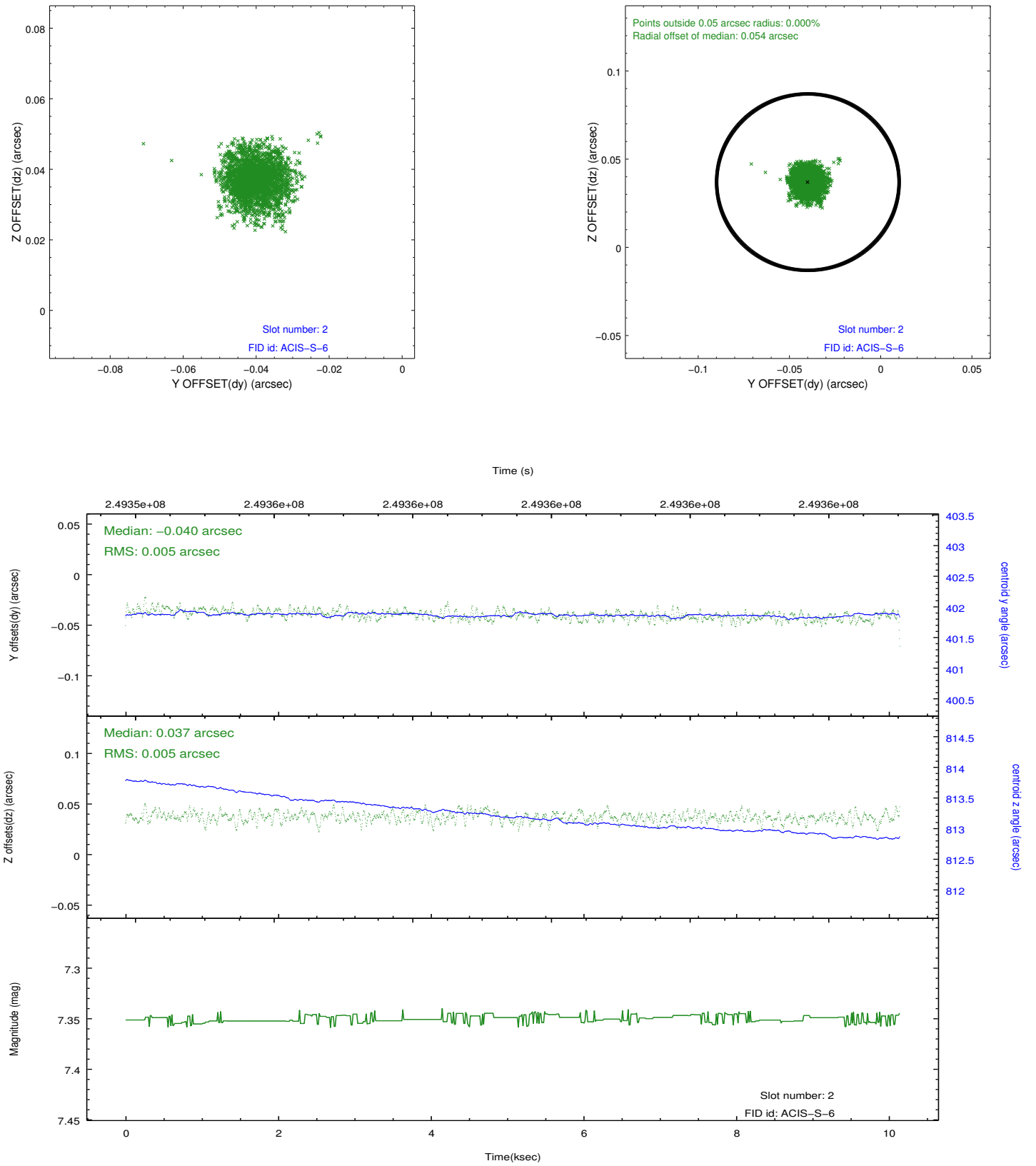
2.5.1 Slot 0



2.5.2 Slot 1



2.5.3 Slot 2



A Summary

A.1 Status

V&V Scientist	Jen Lauer
V&V Date (YYYY-MM-DD)	2012.03.19
V&V Edition	1
V&V Disposition and Status	OK
V&V Charge Time	10.13699

A.2 Comments