

V&V Reference Report

L2 ASCDS Version : 7.6.7.1

Observation 6362 - L2 Version 002
Chandra X-Ray Center

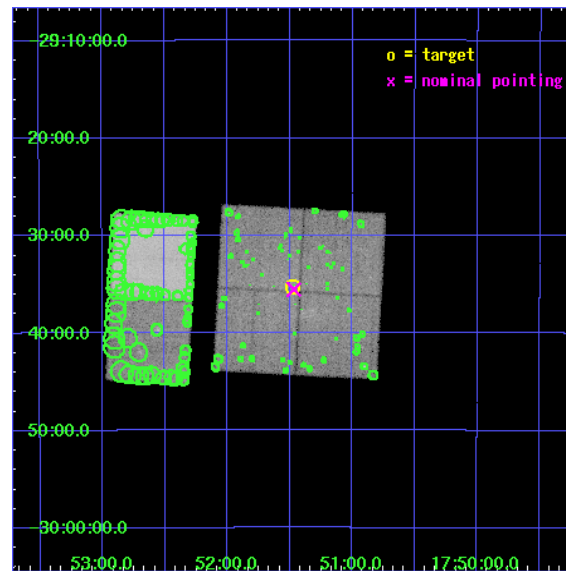
L2 Processing Date : Mar 20 2006

Contents

1	Front	2
2	OBI	3
2.1	OBI	3
2.1.1	Images	3
2.1.2	Bias	3
2.1.3	Parameters	4
2.1.4	Events	4
2.2	Compared Parameters	5
2.3	Aspect	6
2.4	Star Slots	9
2.4.1	Slot 3	9
2.4.2	Slot 4	10
2.4.3	Slot 5	11
2.4.4	Slot 6	12
2.4.5	Slot 7	13
2.5	FID Slots	14
2.5.1	Slot 0	14
2.5.2	Slot 1	15
2.5.3	Slot 2	16
3	Point Sources	17
A	Summary	18
A.1	Status	18
A.2	Comments	18

1 Front

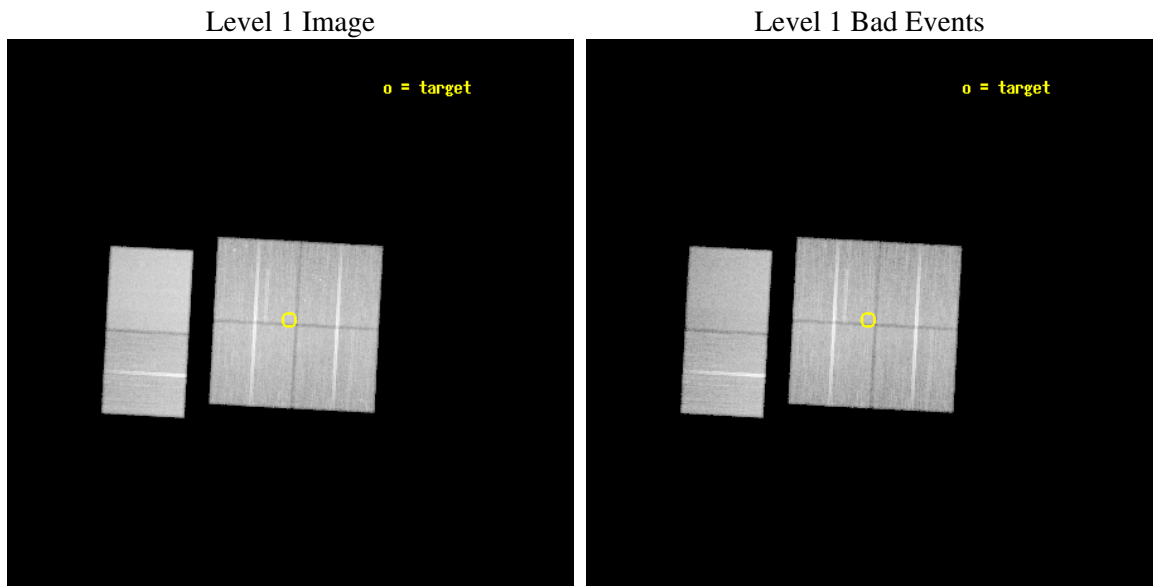
seq_num	600453
obs_id	6362
title	Galactic Bulge Chandra-HST Survey
observer	Prof. Jonathan Grindlay
object	Limiting Window
dtcycle	0
cycle	P
ra_targ	267.86875
dec_targ	-29.588
ra_nom	267.86694157939
dec_nom	-29.592354545977
roll_nom	273.1131402221
revision	2
ontime	38179.199857771
livetime	37695.751840418
ontime0	38172.717897177
ontime1	38179.199857771
ontime2	38179.199857771
ontime3	38179.199857771
ontime6	38179.199857771
ontime7	38179.199857771
l2events	379387



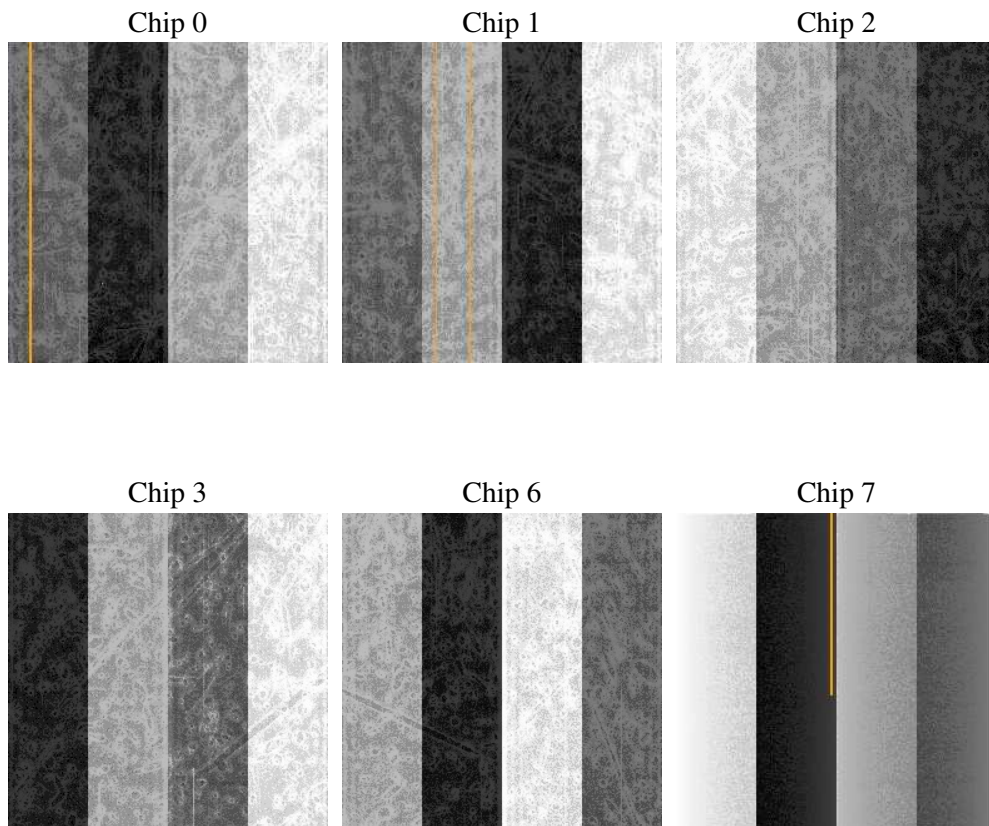
2 OBI

2.1 OBI

2.1.1 Images



2.1.2 Bias



2.1.3 Parameters

obi_num	0
ascdsver	7.6.7.1
caldsver	3.2.1
date	2006-03-20T11:48:28
revision	2

sched_exp_time	38000.000000
ontime	39475.500670999
ontime0	39469.018710405
ontime1	39475.500670999
ontime2	39475.500670999
ontime3	39475.500670999
ontime6	39475.500670999
ontime7	39475.500670999
l1events	1954824

2.1.4 Events

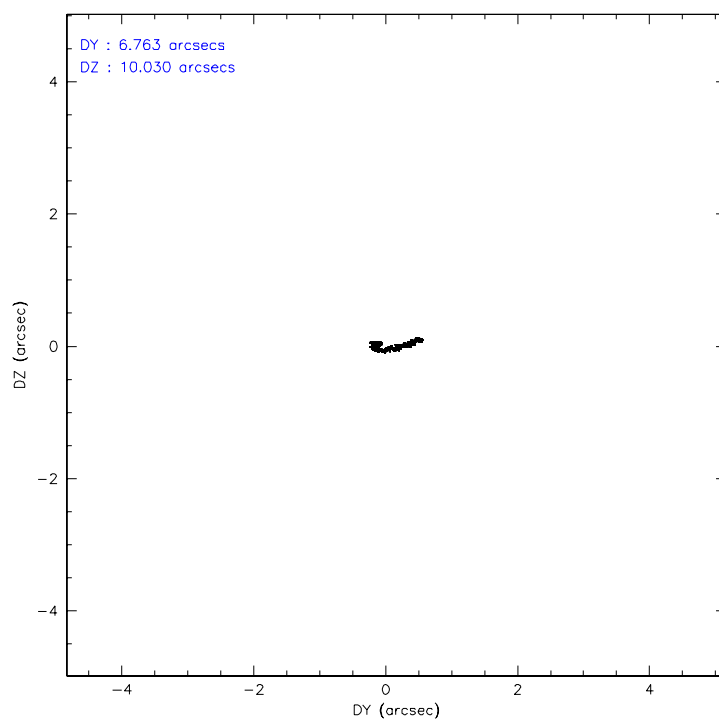
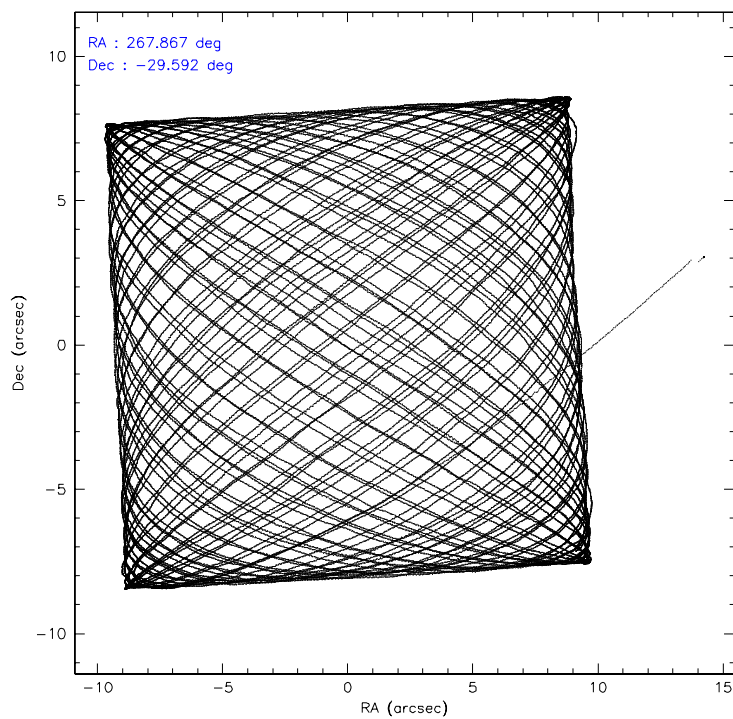
	ccd 0	ccd 1	ccd 2	ccd 3	ccd 6	ccd 7
level 1 events	289113	293514	315388	312847	322828	421134
rejected events	239127	242661	264146	264045	275371	258585
rejected %	82%	82%	83%	84%	85%	61%

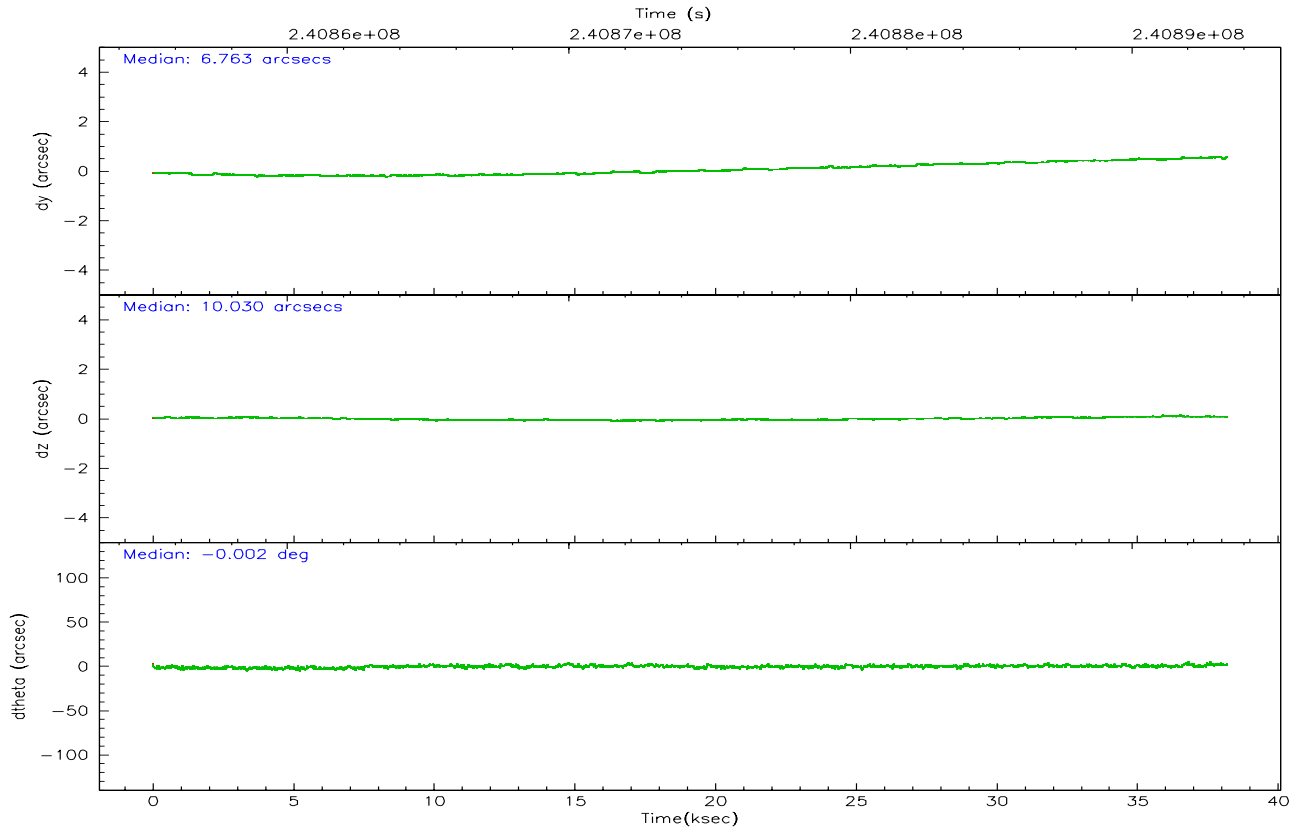
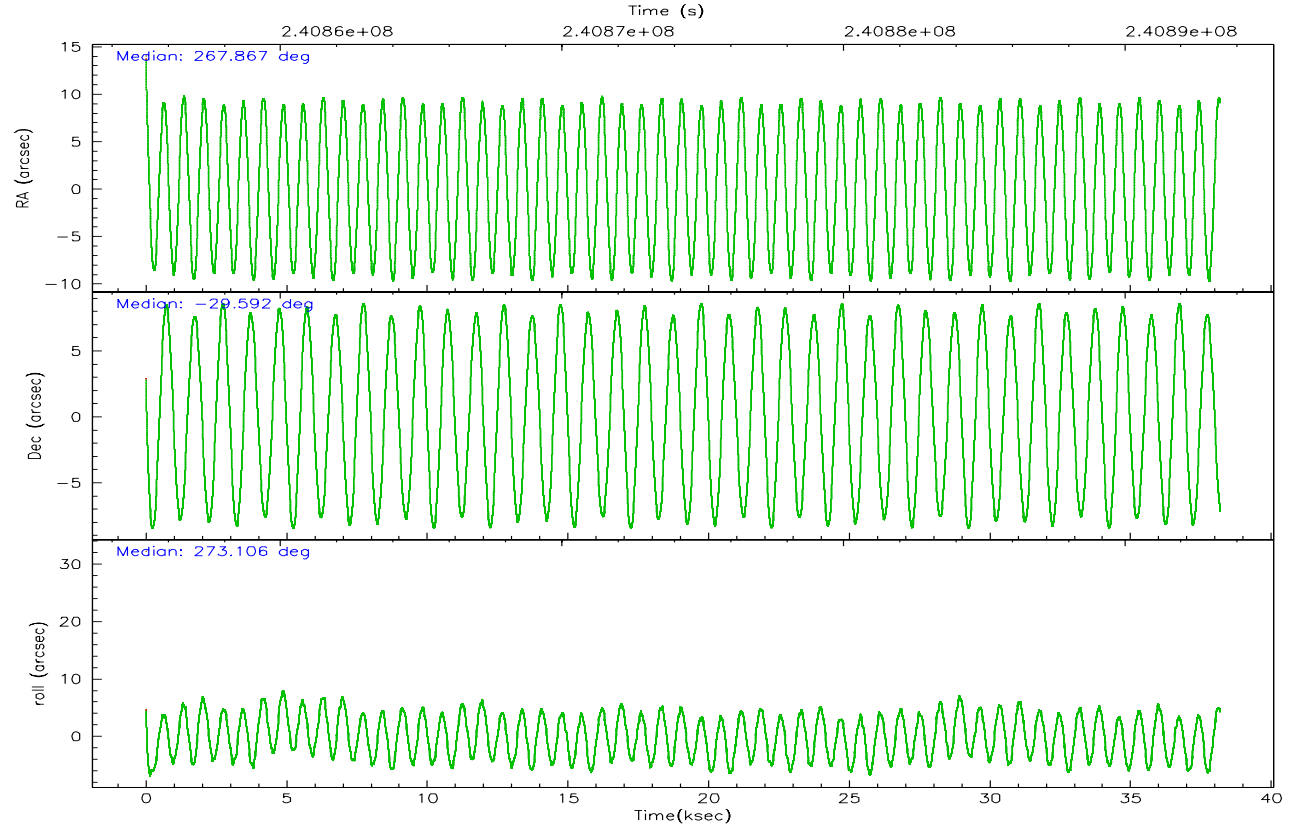
	ccd 0	ccd 1	ccd 2	ccd 3	ccd 6	ccd 7
grade 0 events	28018	26410	30088	27850	24382	11824
	9%	8%	9%	8%	7%	2%
grade 1 events	216	193	233	251	168	271
	0%	0%	0%	0%	0%	0%
grade 2 events	9197	10114	8632	8145	9099	42432
	3%	3%	2%	2%	2%	10%
grade 3 events	3987	3934	3810	3694	3769	8908
	1%	1%	1%	1%	1%	2%
grade 4 events	3704	3898	3798	3752	3733	8696
	1%	1%	1%	1%	1%	2%
grade 5 events	11722	12787	11603	13700	14007	26534
	4%	4%	3%	4%	4%	6%
grade 6 events	6421	7802	6201	6633	7762	96006
	2%	2%	1%	2%	2%	22%
grade 7 events	225848	228376	251023	248822	259908	226463
	78%	77%	79%	79%	80%	53%

2.2 Compared Parameters

Parameter	Planned	Actual	Parameter	Planned	Actual
Instrument	ACIS	ACIS	Obspar format version number	6	6
Detector	ACIS-012367	ACIS-012367	Obspar file type	PREDICTED	ACTUAL
Grating	NONE	NONE	Obspar update status	NONE	UPDATED
Data mode	FAINT	FAINT	On-chip summing requested	N	N
Observation mode	POINTING	POINTING	Subarray requested	NONE	NONE
Pointing RA	267.849628	267.8669415793905	Alternating exposures requested	N	N
Pointing Dec	-29.569487	-29.59235454597711	Primary exposure time	0.000000	3.2
Pointing Roll	272.895903	273.113140222099			
SIM focus pos (mm)	-0.782348	-0.7809083437167272			
SIM defocus (mm)	0	0.001439871863259334			
SIM translation stage pos (mm)	-233.592463	-233.5874344608287			
SIM translation stage offset (mm)	0	-0.005018542100998502			
Observation start time	240855400.184000	240853682.79344			
Observation start date	2005-08-19T16:15:36	2005-08-19T15:48:02			
Observation end time	240893400.184000	240893870.99528			
Observation end date	2005-08-20T02:48:56	2005-08-20T02:57:50			
Read mode	TIMED	TIMED			

2.3 Aspect



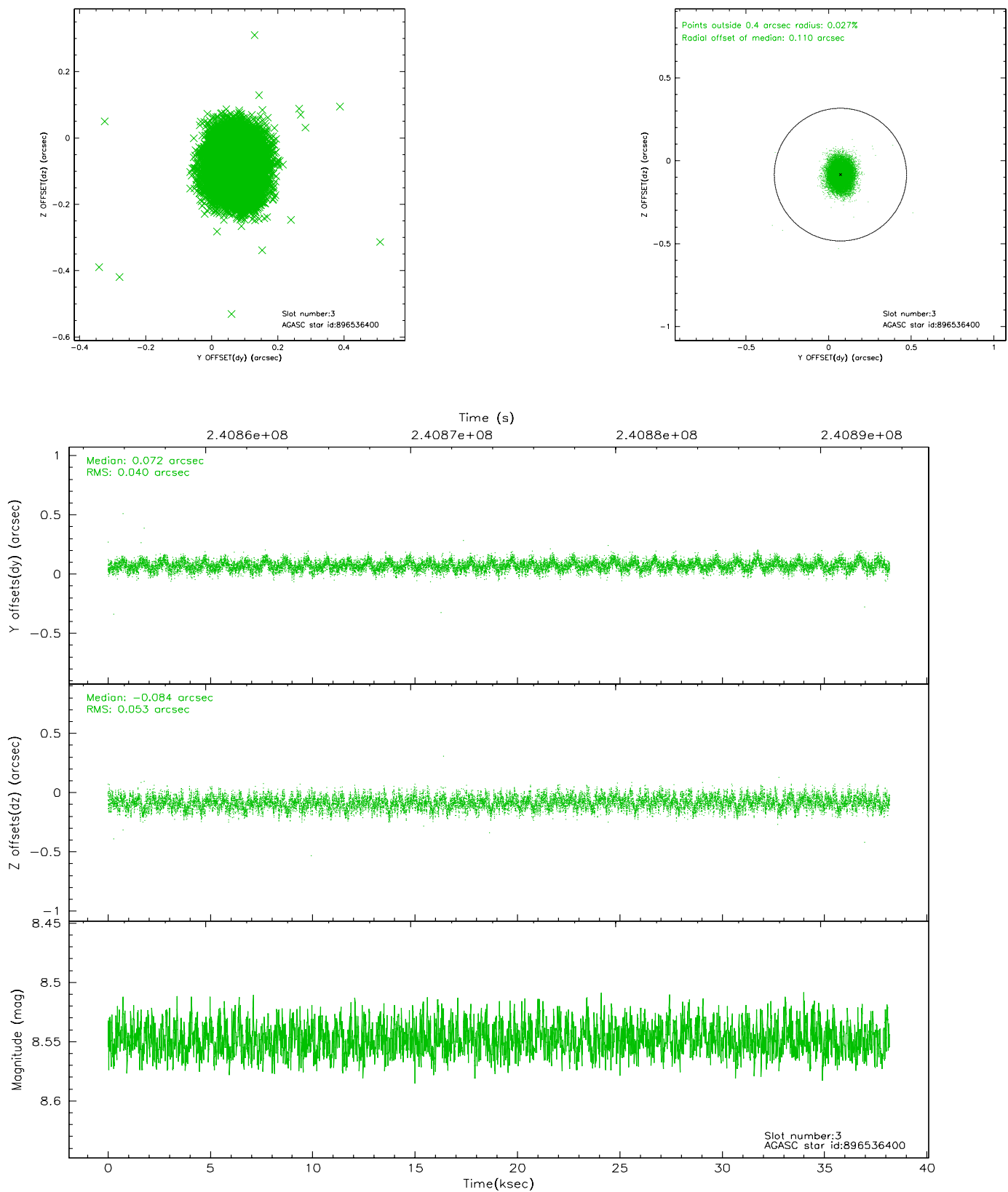


Slot Statistics

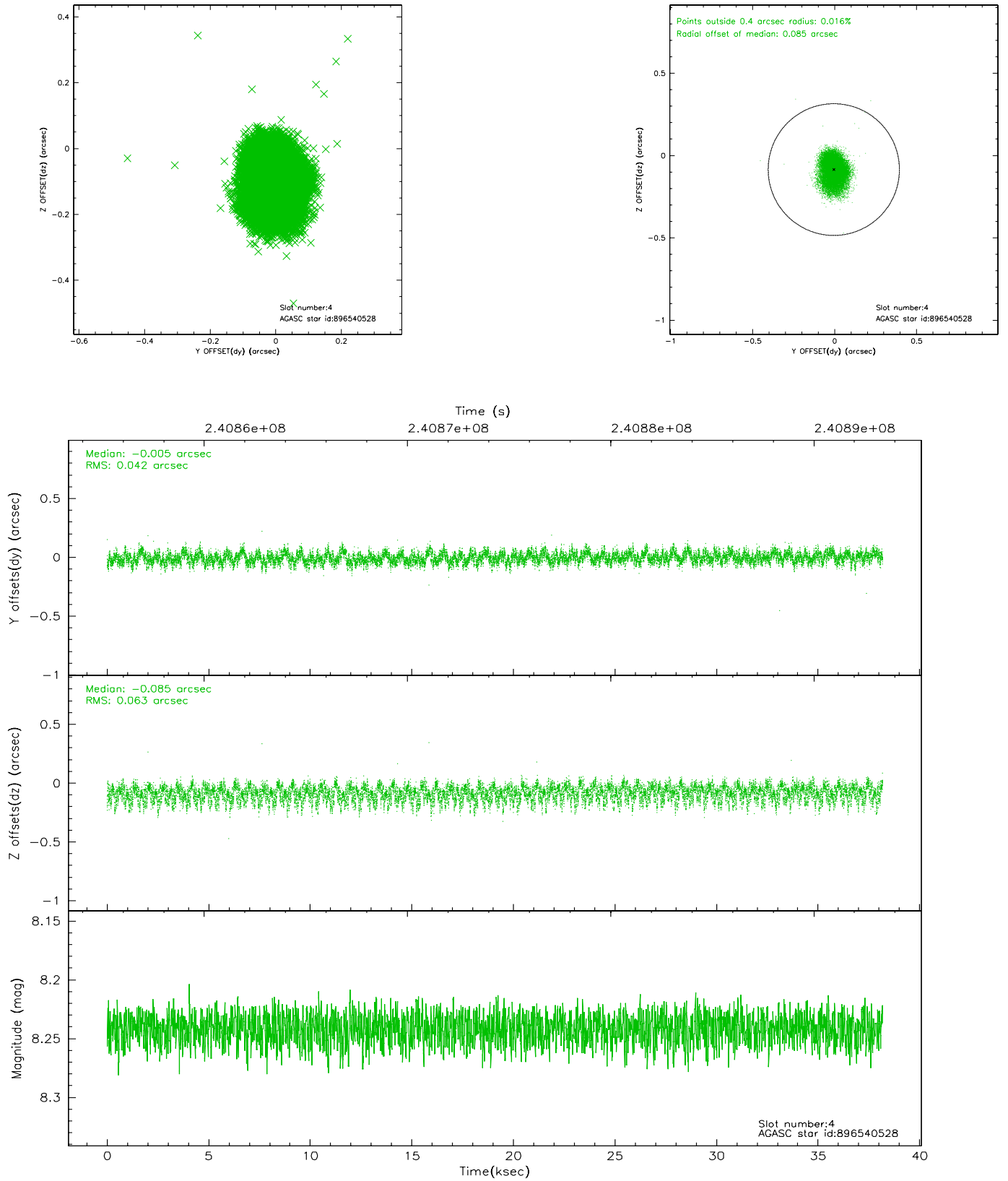
slot	status	id	mag	n_pts	med_dy	med_dz	dr1	dr2	ra	dec	mean_y	mean_z
0	FID	ACIS-I-1	7.25	9313	-0.062	0.071	0.014	0.024	0.000000	0.000000	932.78	-833.44
1	FID	ACIS-I-2	7.14	9314	-0.092	-0.057	0.011	0.017	0.000000	0.000000	-761.33	-840.01
2	FID	ACIS-I-4	7.18	9313	0.054	0.054	0.009	0.016	0.000000	0.000000	2152.78	1066.33
3	GUIDE	896536400	8.55	18624	0.072	-0.084	0.070	0.113	267.359146	-29.438655	-544.18	-1512.10
4	GUIDE	896540528	8.24	18621	-0.005	-0.085	0.080	0.130	267.368305	-29.314773	-988.37	-1462.63
5	GUIDE	896543792	9.82	18605	0.051	0.035	0.131	0.216	267.148052	-29.957989	1293.64	-2256.14
6	GUIDE	898247688	8.67	18615	-0.128	0.254	0.082	0.130	268.426687	-29.012154	-1907.49	1915.73
7	GUIDE	898248800	8.22	18623	0.008	-0.119	0.061	0.097	267.977609	-29.931731	1323.10	333.23

2.4 Star Slots

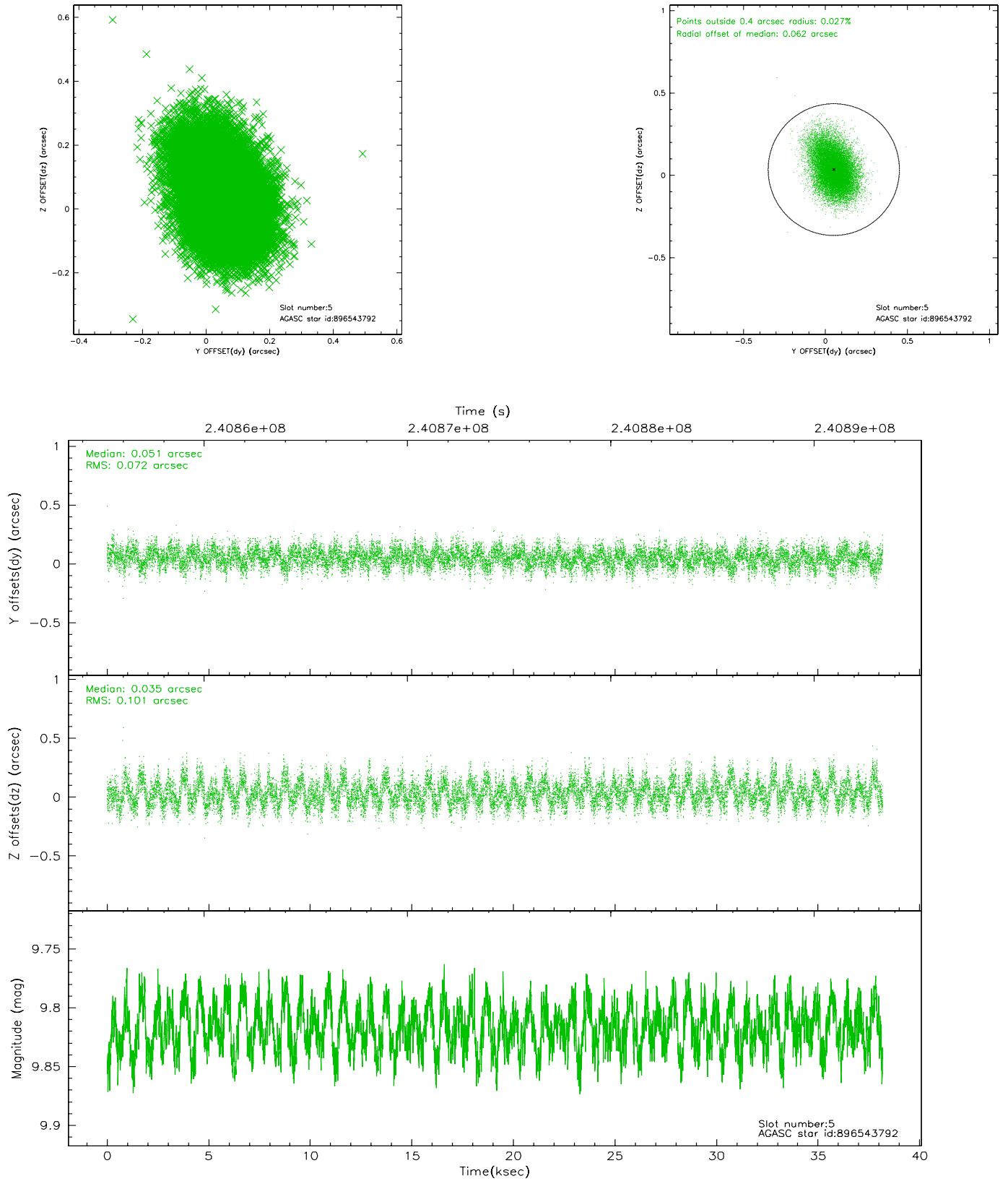
2.4.1 Slot 3



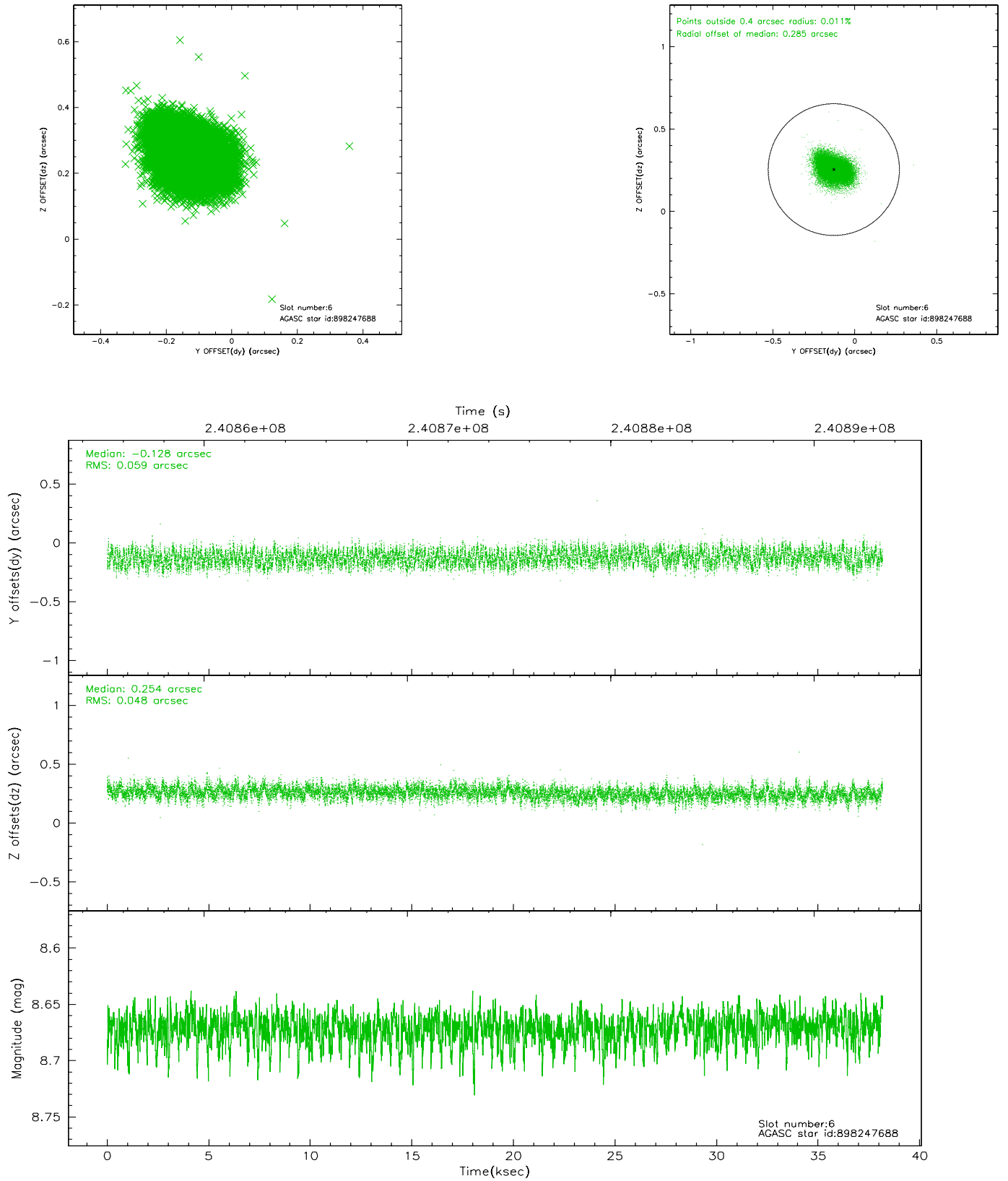
2.4.2 Slot 4



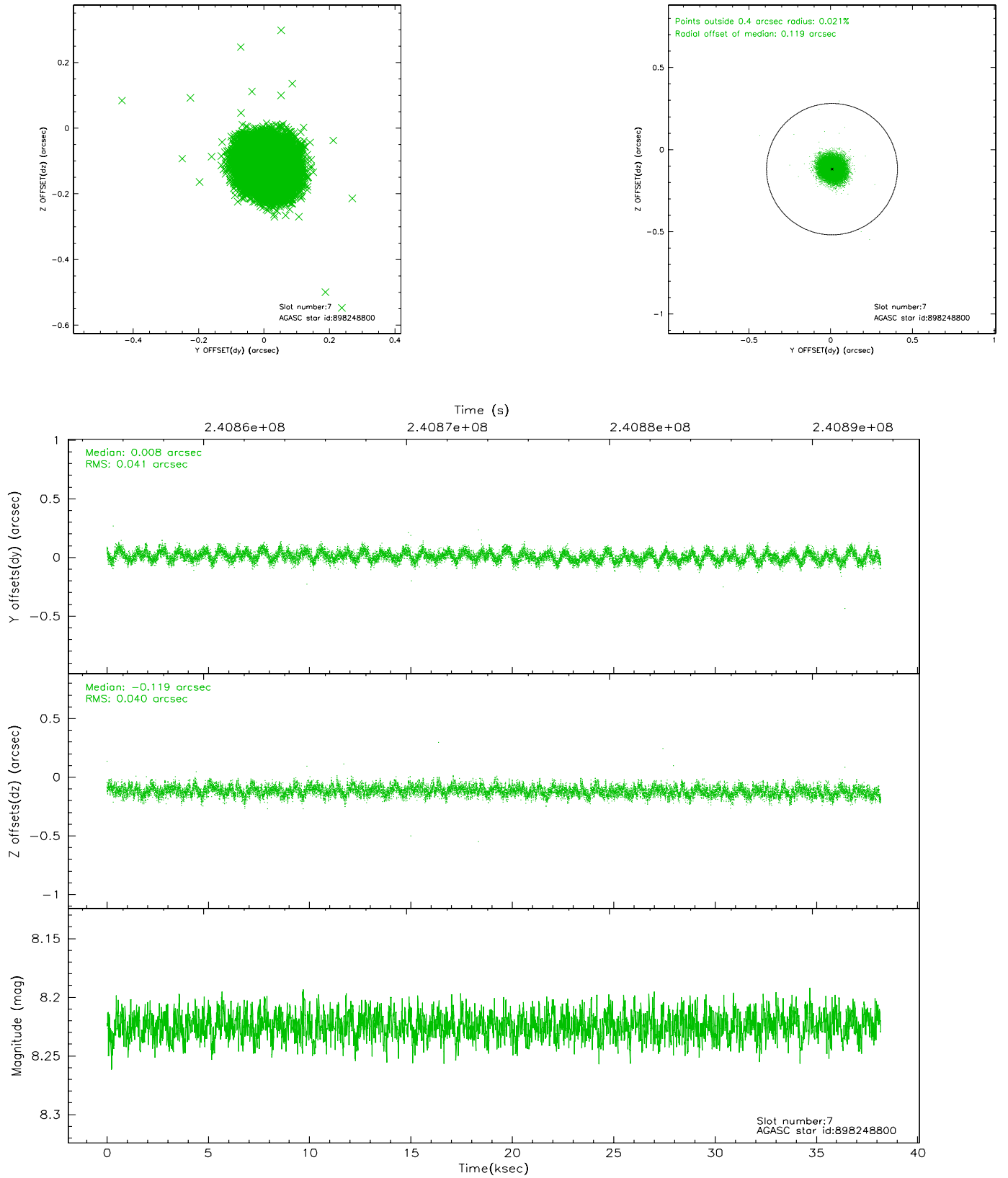
2.4.3 Slot 5



2.4.4 Slot 6

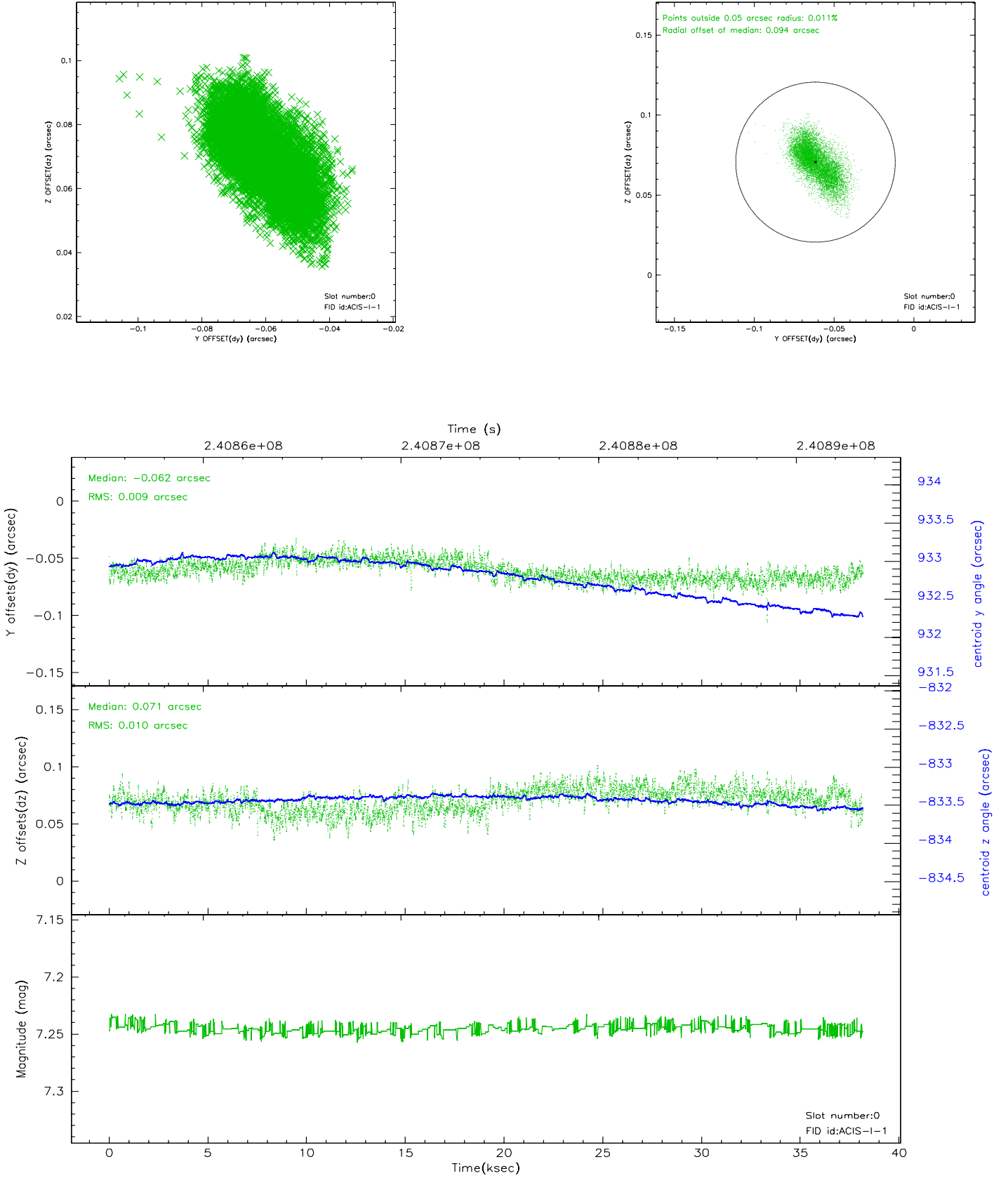


2.4.5 Slot 7

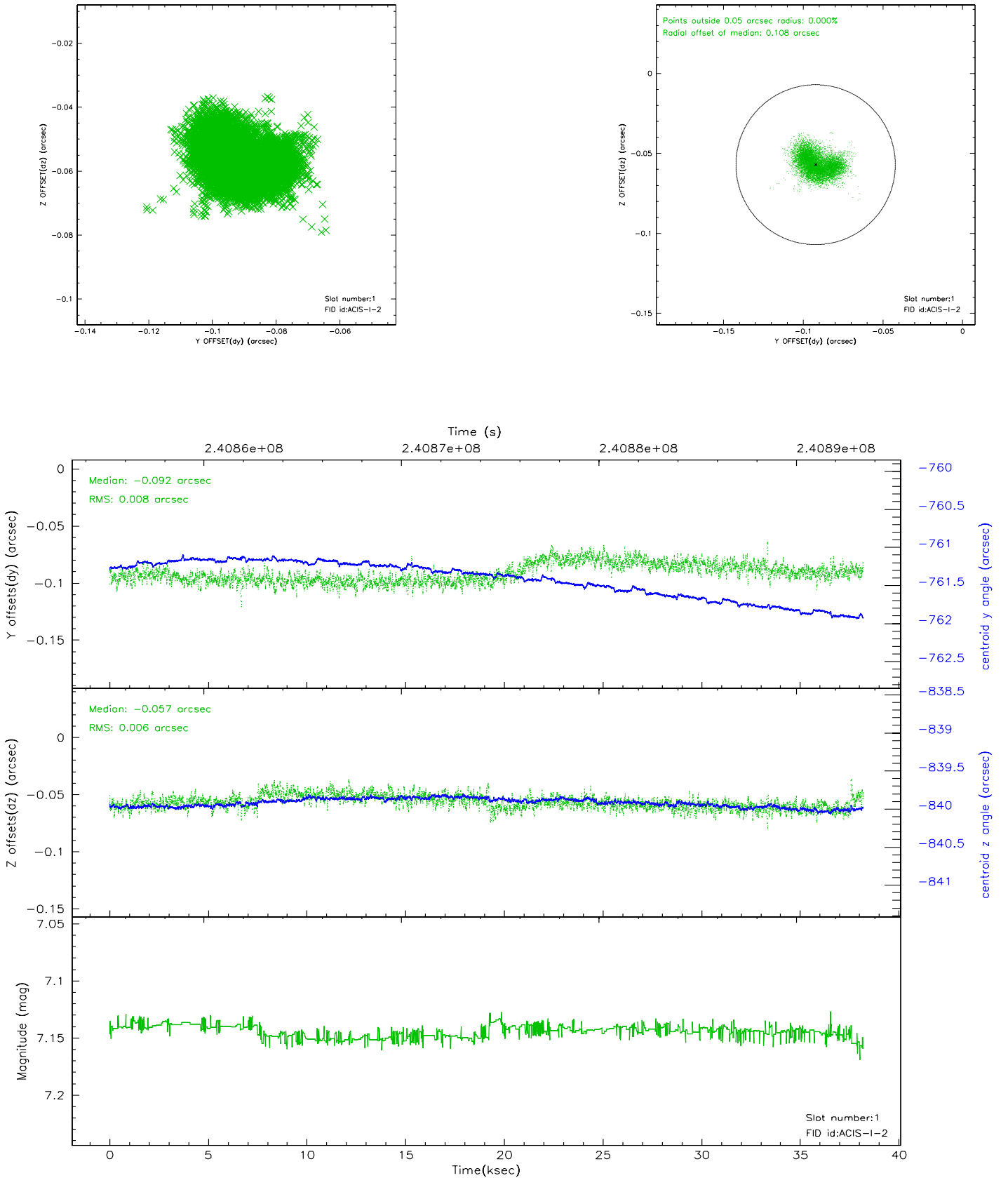


2.5 FID Slots

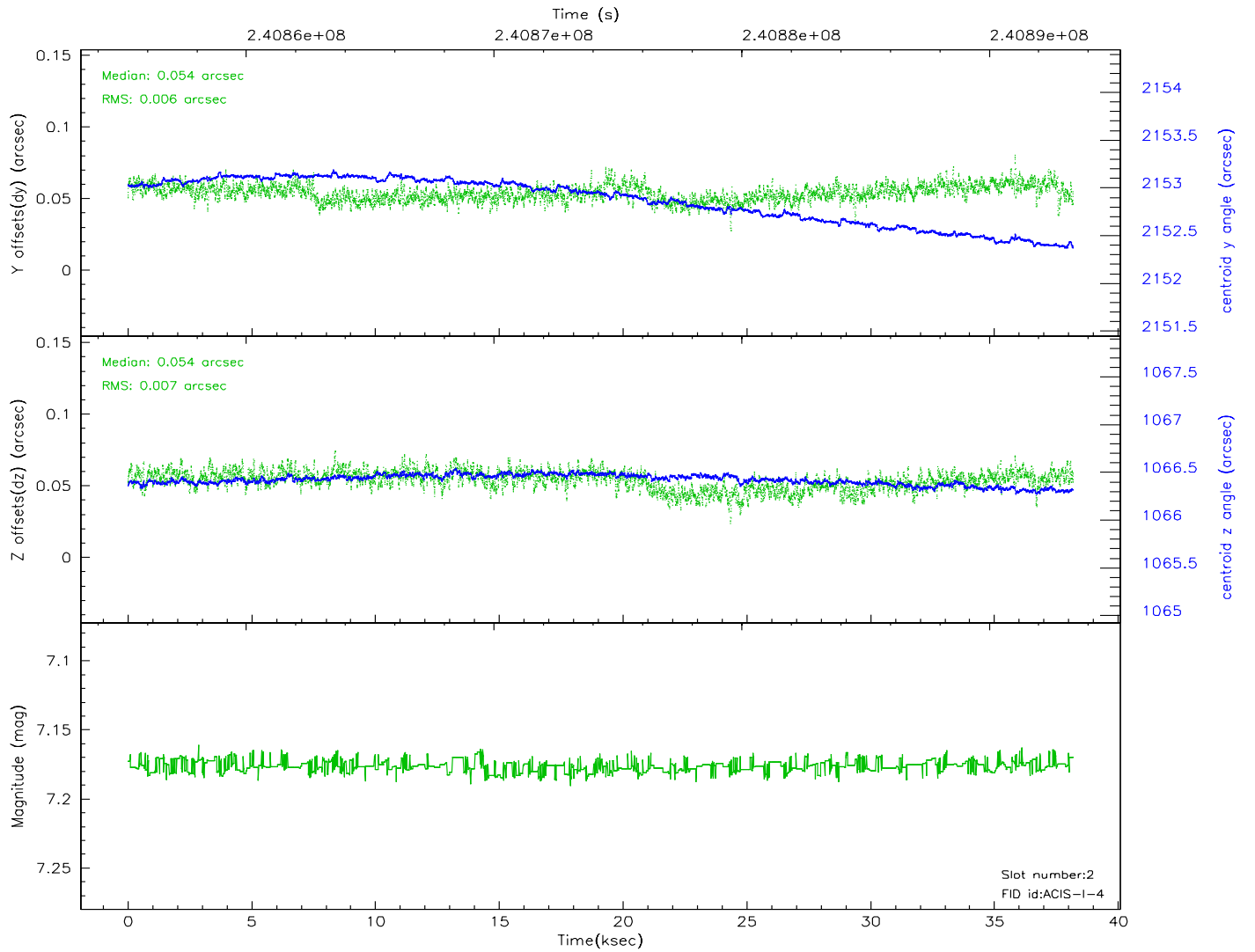
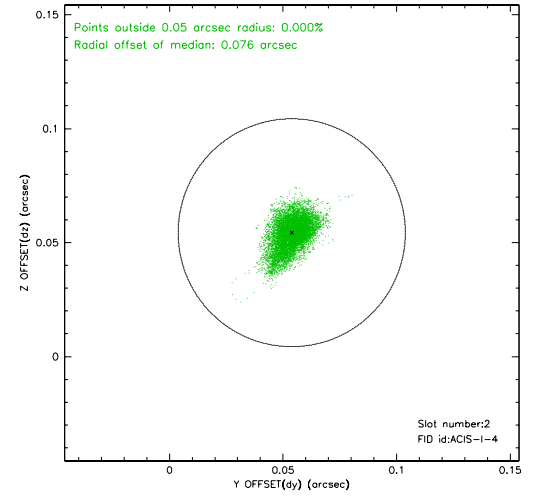
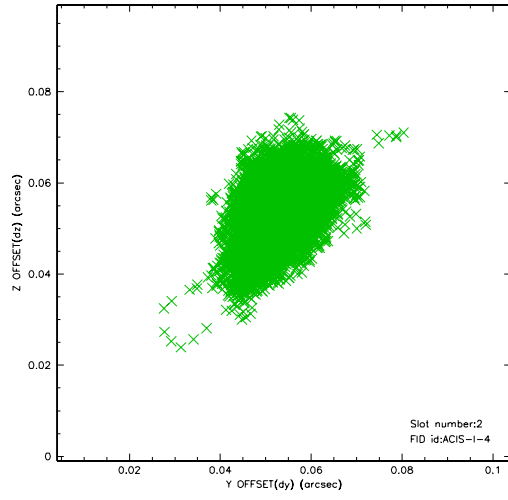
2.5.1 Slot 0



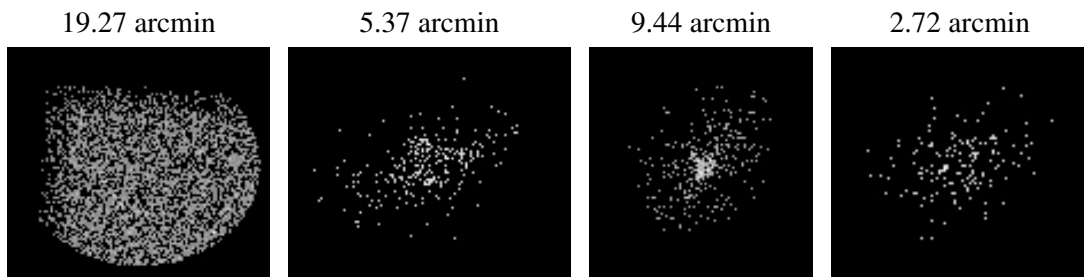
2.5.2 Slot 1



2.5.3 Slot 2



3 Point Sources



A Summary

A.1 Status

V&V Scientist	Jen Lauer
V&V Date (YYYY-MM-DD)	2006.03.20
V&V Edition	1
V&V Disposition and Status	OK
V&V Charge Time	38.17919

A.2 Comments

ACIS focal plane temp above the calibration limits for the first four ksec of the observation.