

V&V Reference Report

L2 ASCDS Version : 7.6.7

Observation 6113 - L2 Version 002
Chandra X-Ray Center

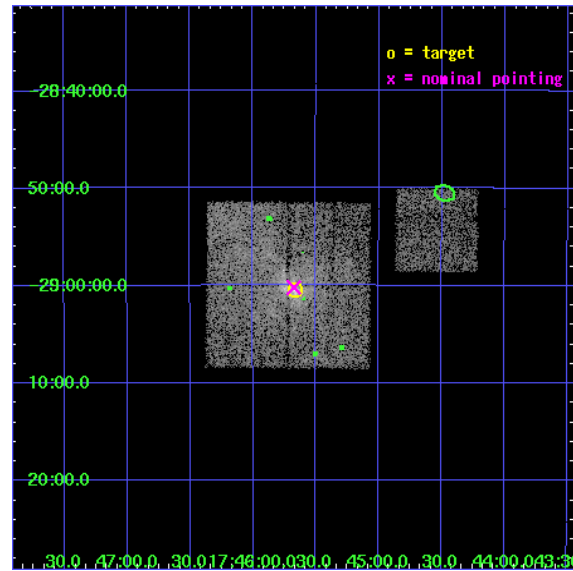
L2 Processing Date: Feb 25 2006

Contents

1	Front	2
2	OBI	3
2.1	OBI	3
2.1.1	Images	3
2.1.2	Bias	3
2.1.3	Parameters	4
2.1.4	Events	4
2.2	Compared Parameters	5
2.3	Aspect	6
2.4	Star Slots	9
2.4.1	Slot 3	9
2.4.2	Slot 4	10
2.4.3	Slot 5	11
2.4.4	Slot 6	12
2.4.5	Slot 7	13
2.5	FID Slots	14
2.5.1	Slot 0	14
2.5.2	Slot 1	15
2.5.3	Slot 2	16
3	Point Sources	17
A	Summary	18
A.1	Status	18
A.2	Comments	18

1 Front

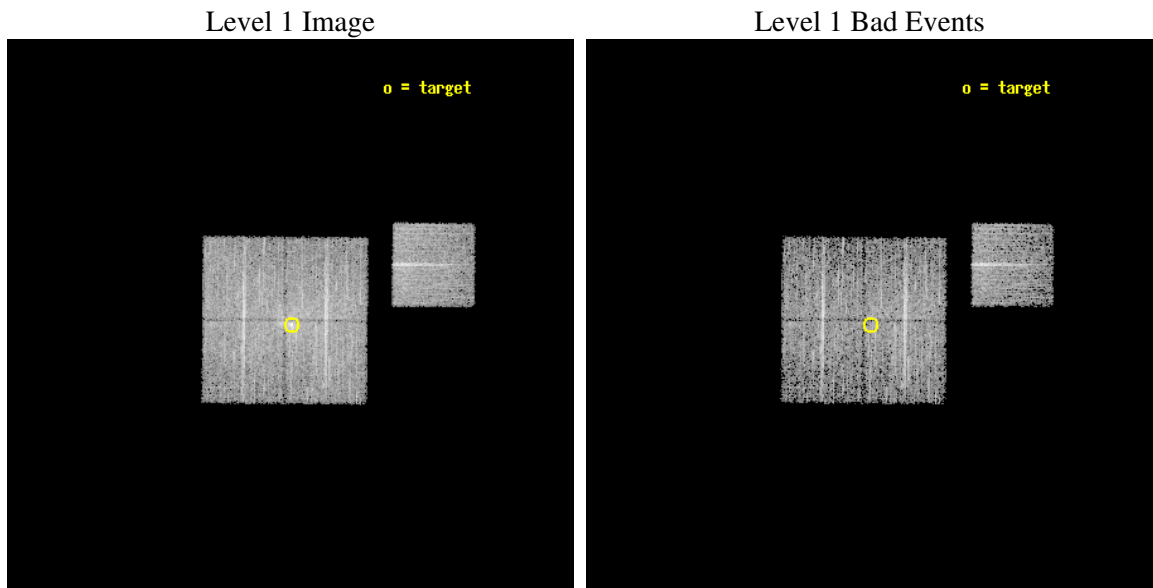
seq_num	600476
obs_id	6113
title	Simultaneous Gamma-Ray to Sub-Millimeter Monitoring of Sagittarius A*
observer	Dr. Frederick Baganoff
object	Sgr A*
dtcycle	0
cycle	P
ra_targ	266.416667
dec_targ	-29.007778
ra_nom	266.41870440025
dec_nom	-29.003525252728
roll_nom	90.574769764122
revision	2
ontime	4919.6999905407
livetime	4855.4204883339
ontime0	4919.6999905407
ontime1	4919.6999905407
ontime2	4919.6999905407
ontime3	4919.6999905407
ontime6	4919.6999905407
l2events	39653



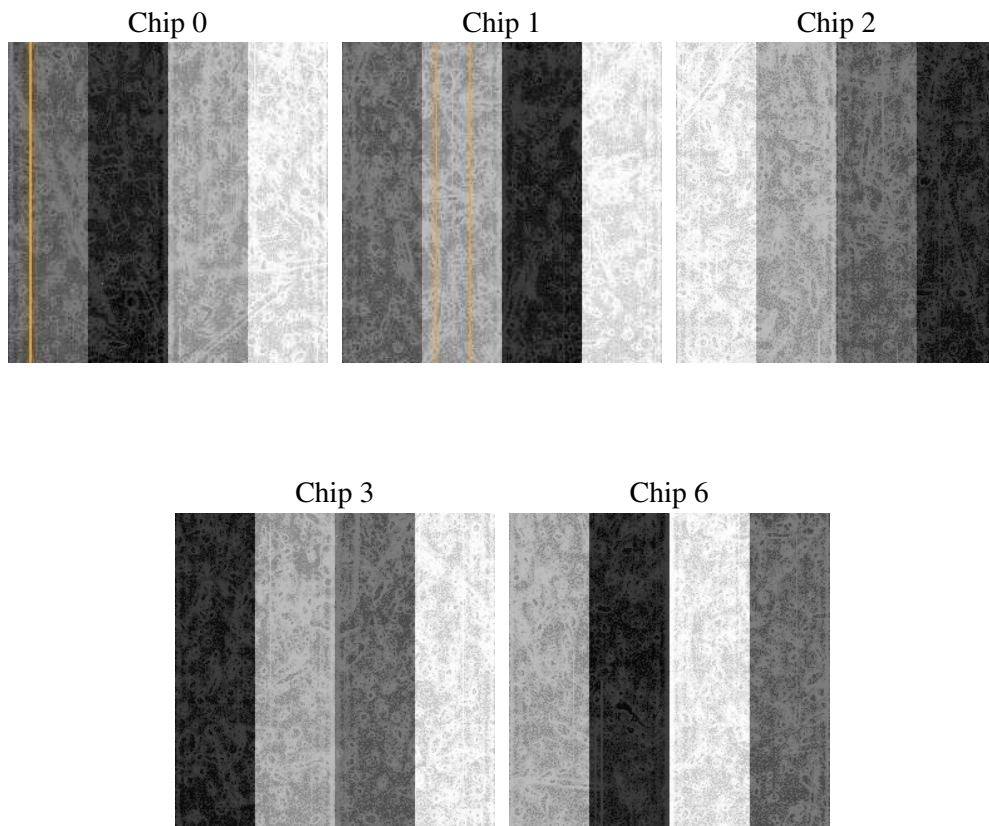
2 OBI

2.1 OBI

2.1.1 Images



2.1.2 Bias



2.1.3 Parameters

obi_num	0
ascdsver	7.6.7
caldsver	3.2.1
date	2006-02-25T08:56:17
revision	2

sched_exp_time	4800.000000
ontime	6470.4831933081
ontime0	6470.4831933081
ontime1	6470.4832132161
ontime2	6470.4832132161
ontime3	6470.4831933081
ontime6	6470.4832132161
l1events	260052

2.1.4 Events

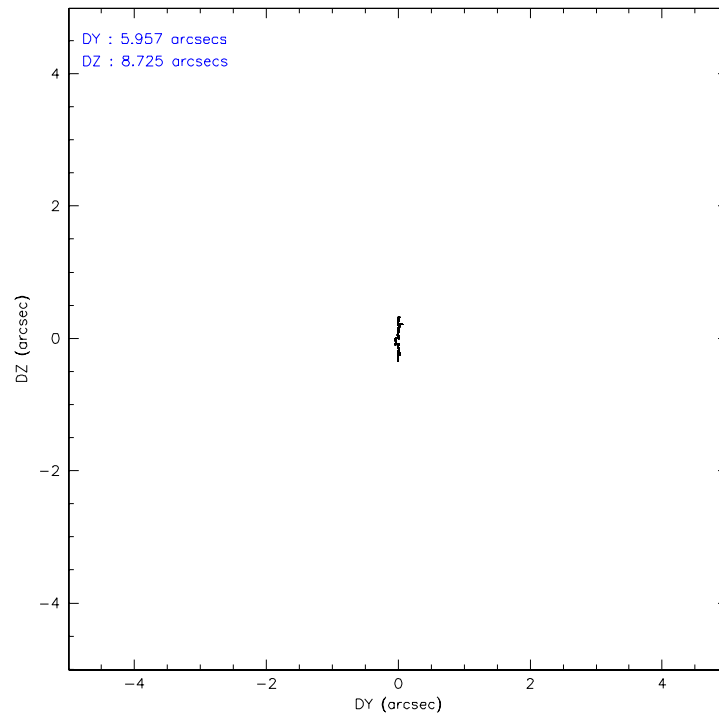
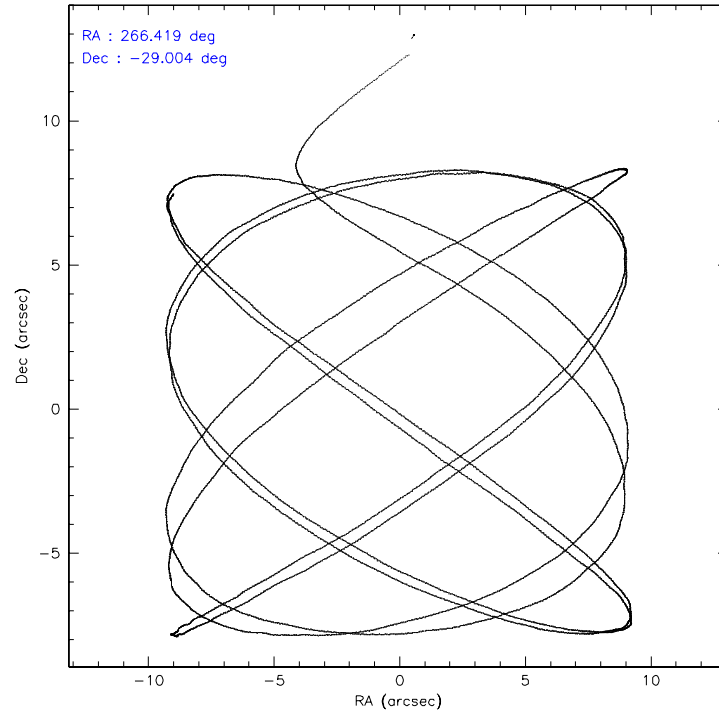
	ccd 0	ccd 1	ccd 2	ccd 3	ccd 6
level 1 events	52328	49118	53361	54362	50883
rejected events	40869	39983	45241	44625	45497
rejected %	78%	81%	84%	82%	89%

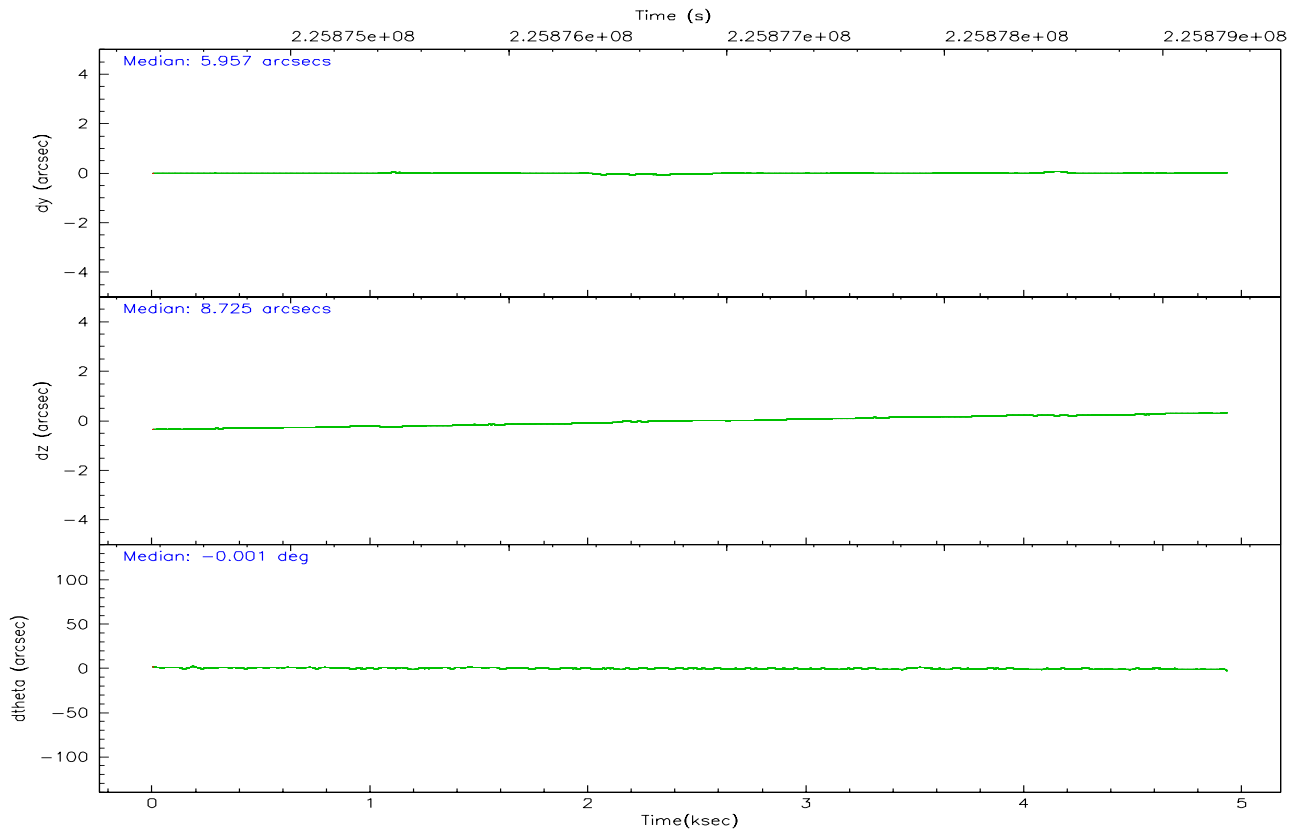
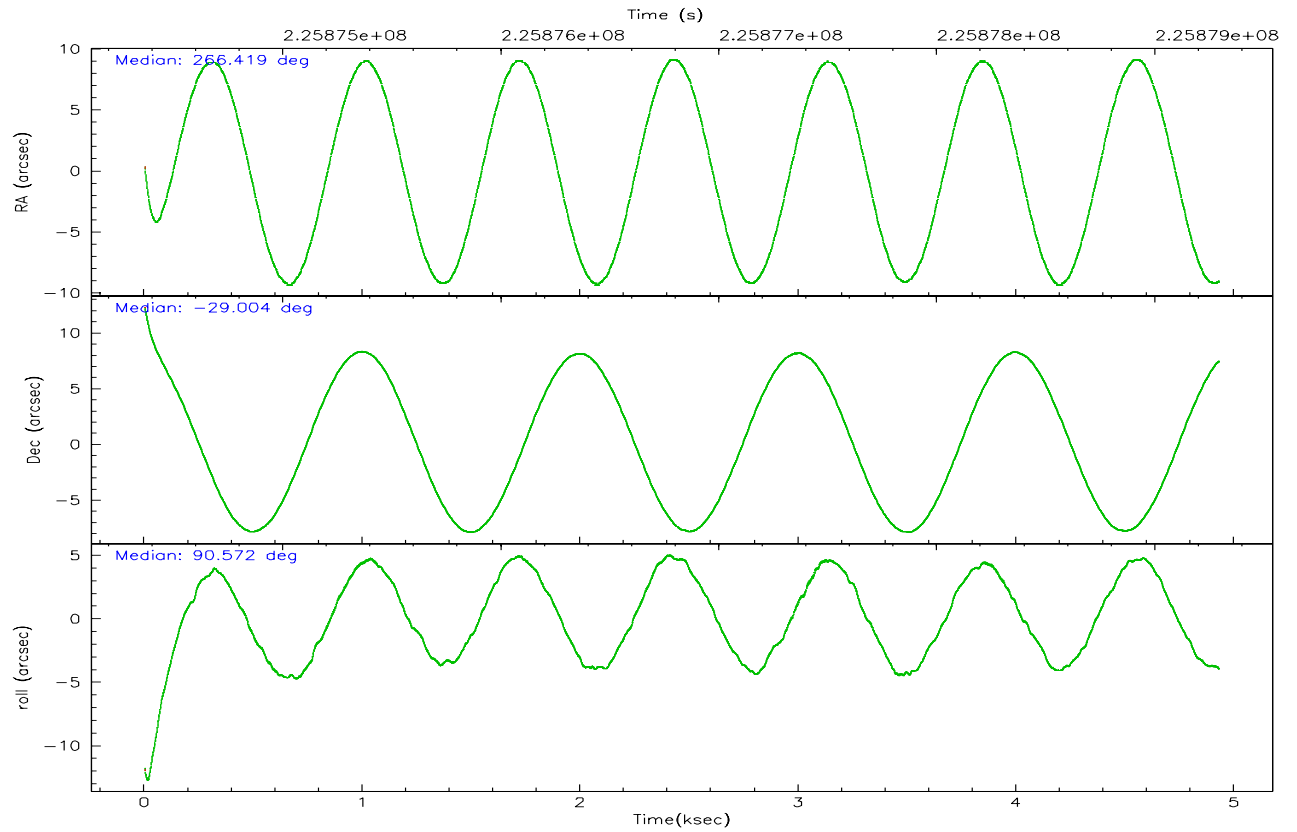
	ccd 0	ccd 1	ccd 2	ccd 3	ccd 6
grade 0 events	7667	5931	5391	6436	3018
	14%	12%	10%	11%	5%
grade 1 events	65	42	44	48	26
	0%	0%	0%	0%	0%
grade 2 events	2256	1991	1668	1876	1367
	4%	4%	3%	3%	2%
grade 3 events	940	807	707	811	618
	1%	1%	1%	1%	1%
grade 4 events	914	766	713	844	604
	1%	1%	1%	1%	1%
grade 5 events	2031	2101	1965	2264	2274
	3%	4%	3%	4%	4%
grade 6 events	1512	1525	1236	1439	1264
	2%	3%	2%	2%	2%
grade 7 events	36943	35955	41637	40644	41712
	70%	73%	78%	74%	81%

2.2 Compared Parameters

Parameter	Planned	Actual	Parameter	Planned	Actual
Instrument	ACIS	ACIS	Obspar format version number	6	6
Detector	ACIS-01236	ACIS-01236	Obspar file type	PREDICTED	ACTUAL
Grating	NONE	NONE	Obspar update status	NONE	UPDATED
Data mode	FAINT	FAINT	On-chip summing requested	N	N
Observation mode	POINTING	POINTING	Subarray requested	NONE	NONE
Pointing RA	266.434723	266.418704400254	Alternating exposures requested	N	N
Pointing Dec	-29.027008	-29.0035252527282	Primary exposure time	0.000000	3.1
Pointing Roll	90.373878	90.57476976412161			
SIM focus pos (mm)	-0.782348	-0.7809083437167272			
SIM defocus (mm)	0	0.001439871863259334			
SIM translation stage pos (mm)	-233.592463	-233.5874344608287			
SIM translation stage offset (mm)	0	-0.005018542100998502			
Observation start time	225874502.184000	225872764.88554			
Observation start date	2005-02-27T06:53:58	2005-02-27T06:26:04			
Observation end time	225879302.184000	225880165.89837			
Observation end date	2005-02-27T08:13:58	2005-02-27T08:29:25			
Read mode	TIMED	TIMED			

2.3 Aspect



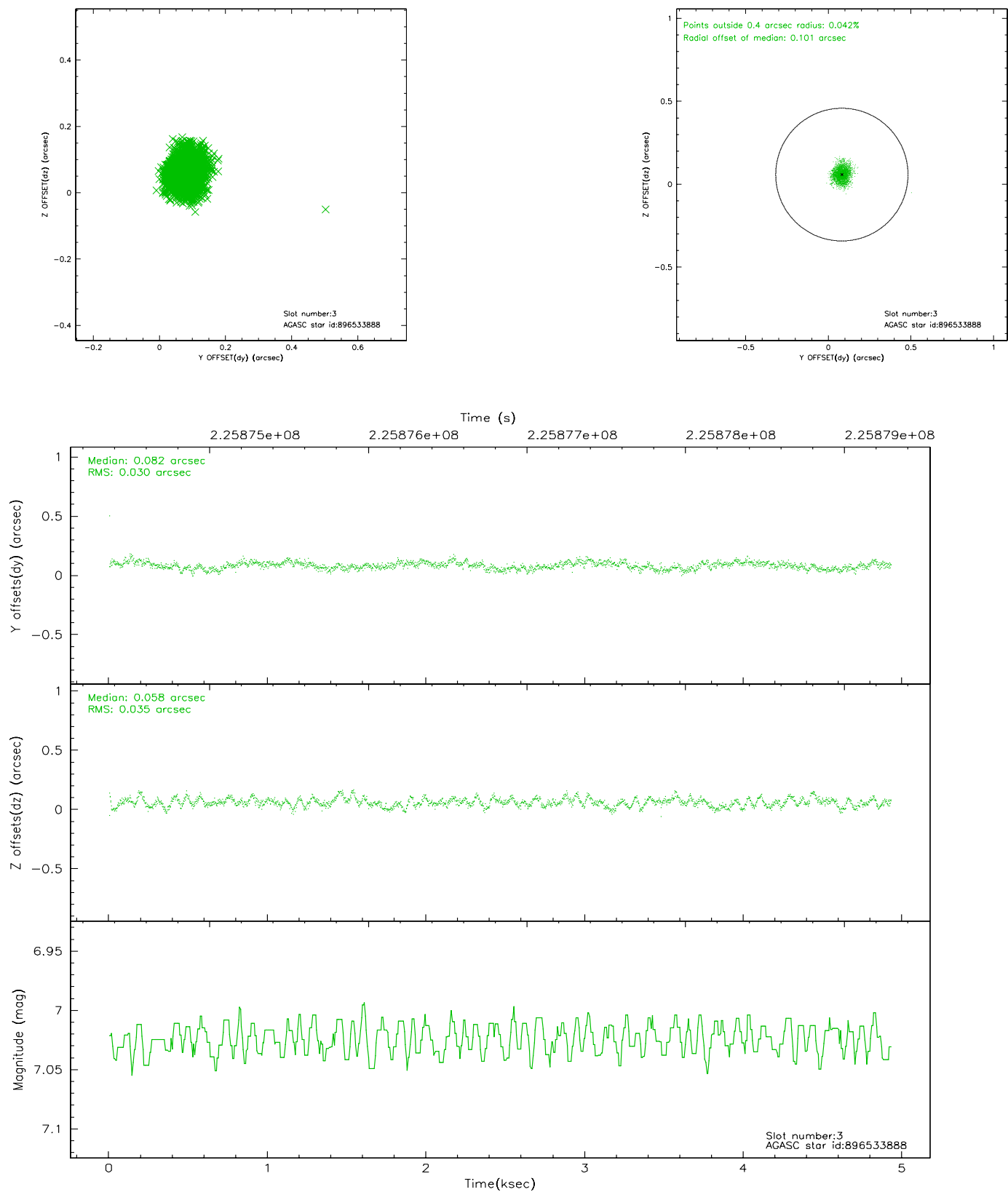


Slot Statistics

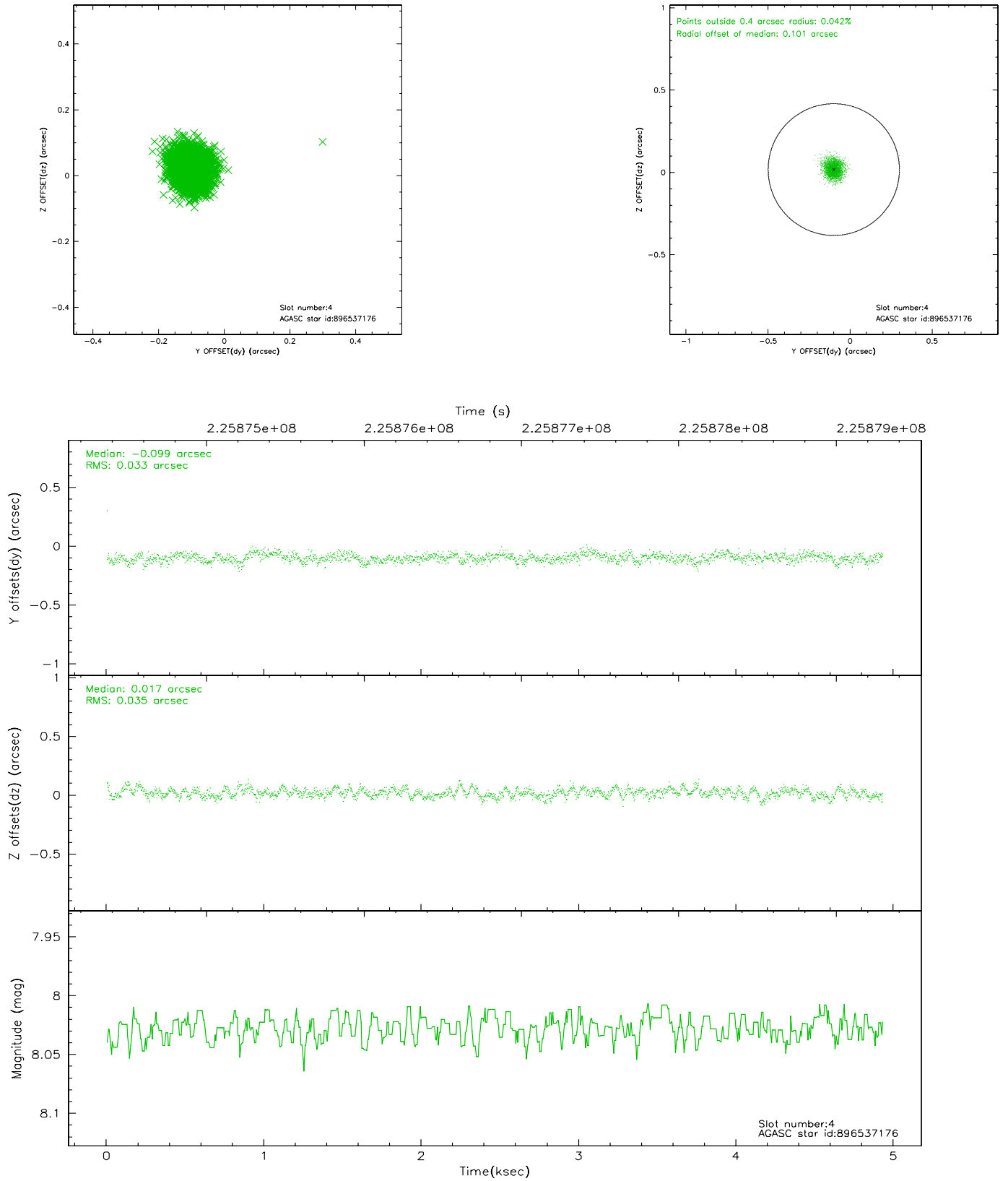
slot	status	id	mag	n_pts	med_dy	med_dz	dr1	dr2	ra	dec	mean_y	mean_z
0	FID	ACIS-I-1	7.25	1202	-0.022	0.075	0.010	0.015	0.000000	0.000000	933.73	-832.08
1	FID	ACIS-I-4	7.19	1203	0.072	-0.018	0.008	0.013	0.000000	0.000000	2154.57	1067.01
2	FID	ACIS-I-5	7.23	1202	-0.149	0.013	0.009	0.014	0.000000	0.000000	-1812.79	1066.34
3	GUIDE	896533888	7.02	2405	0.082	0.058	0.049	0.079	266.666434	-29.392757	-1321.79	-718.07
4	GUIDE	896537176	8.03	2405	-0.099	0.017	0.051	0.081	266.498272	-28.678259	1253.69	-209.01
5	GUIDE	896404568	7.86	2405	-0.204	-0.383	0.052	0.084	265.687293	-28.431080	2153.82	2352.07
6	GUIDE	896537776	7.52	2405	0.288	0.083	0.056	0.090	266.655684	-29.665673	-2302.87	-675.16
7	GUIDE	896538840	8.92	2403	-0.067	0.224	0.074	0.119	266.920426	-28.466925	2001.93	-1550.24

2.4 Star Slots

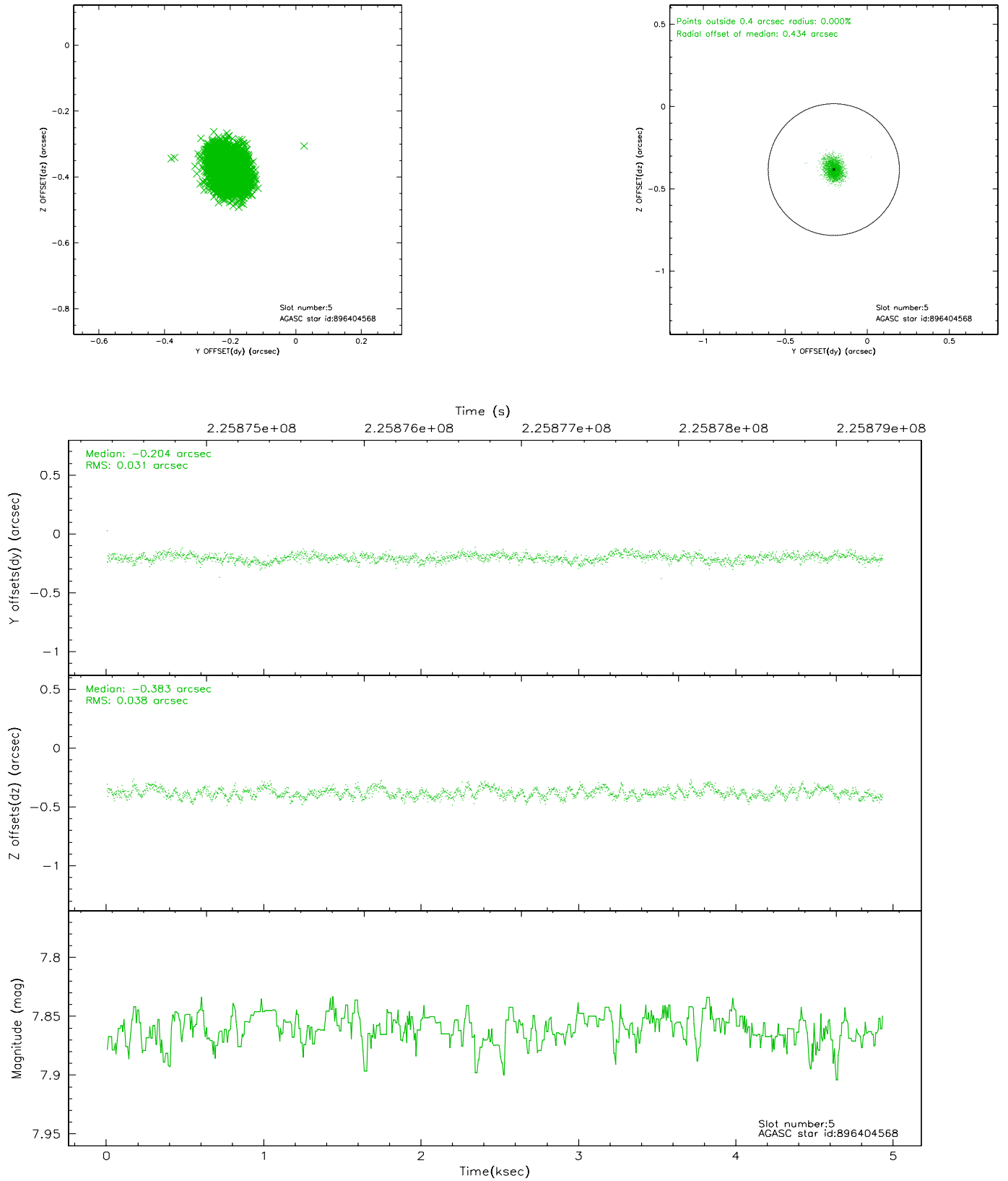
2.4.1 Slot 3



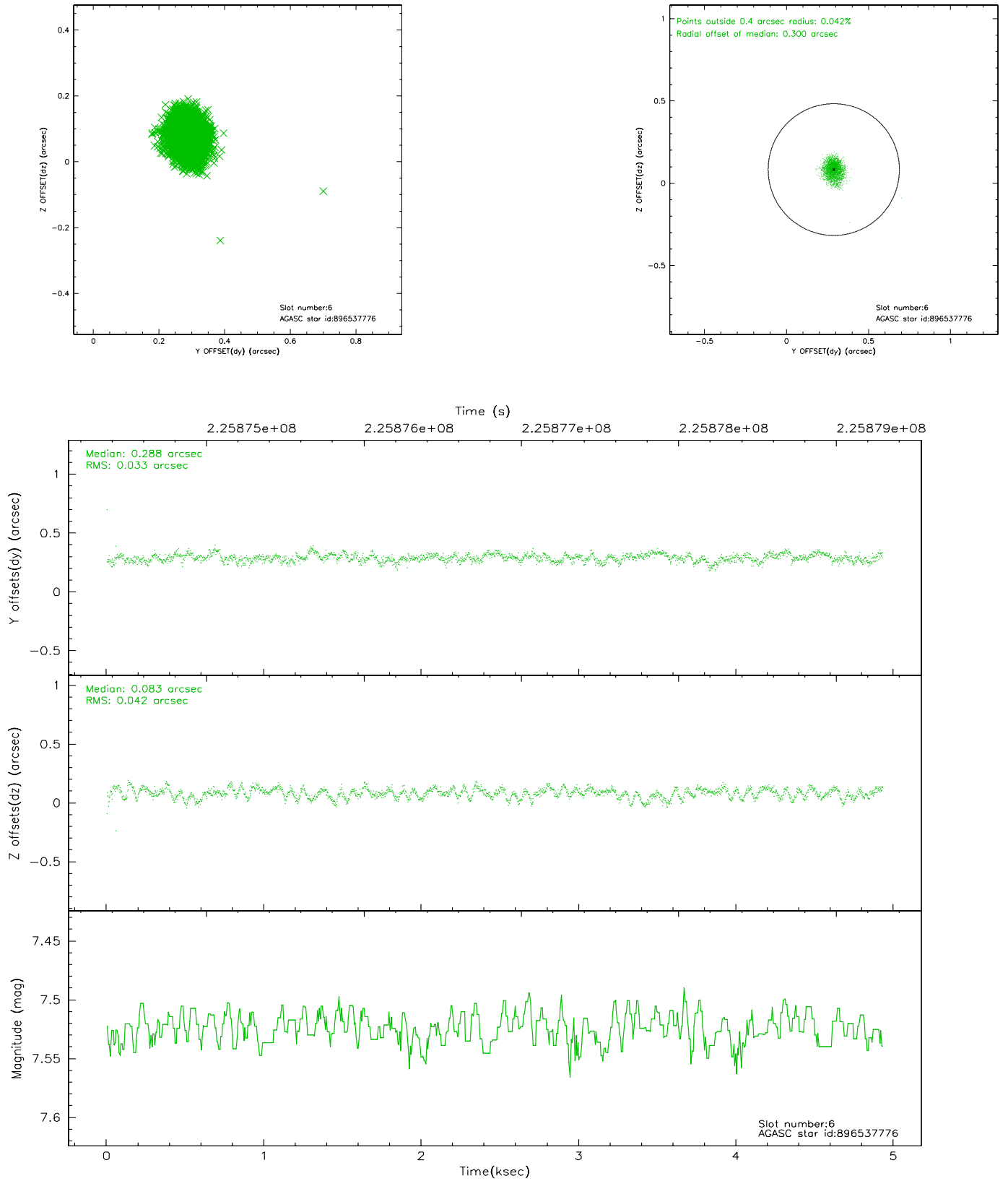
2.4.2 Slot 4



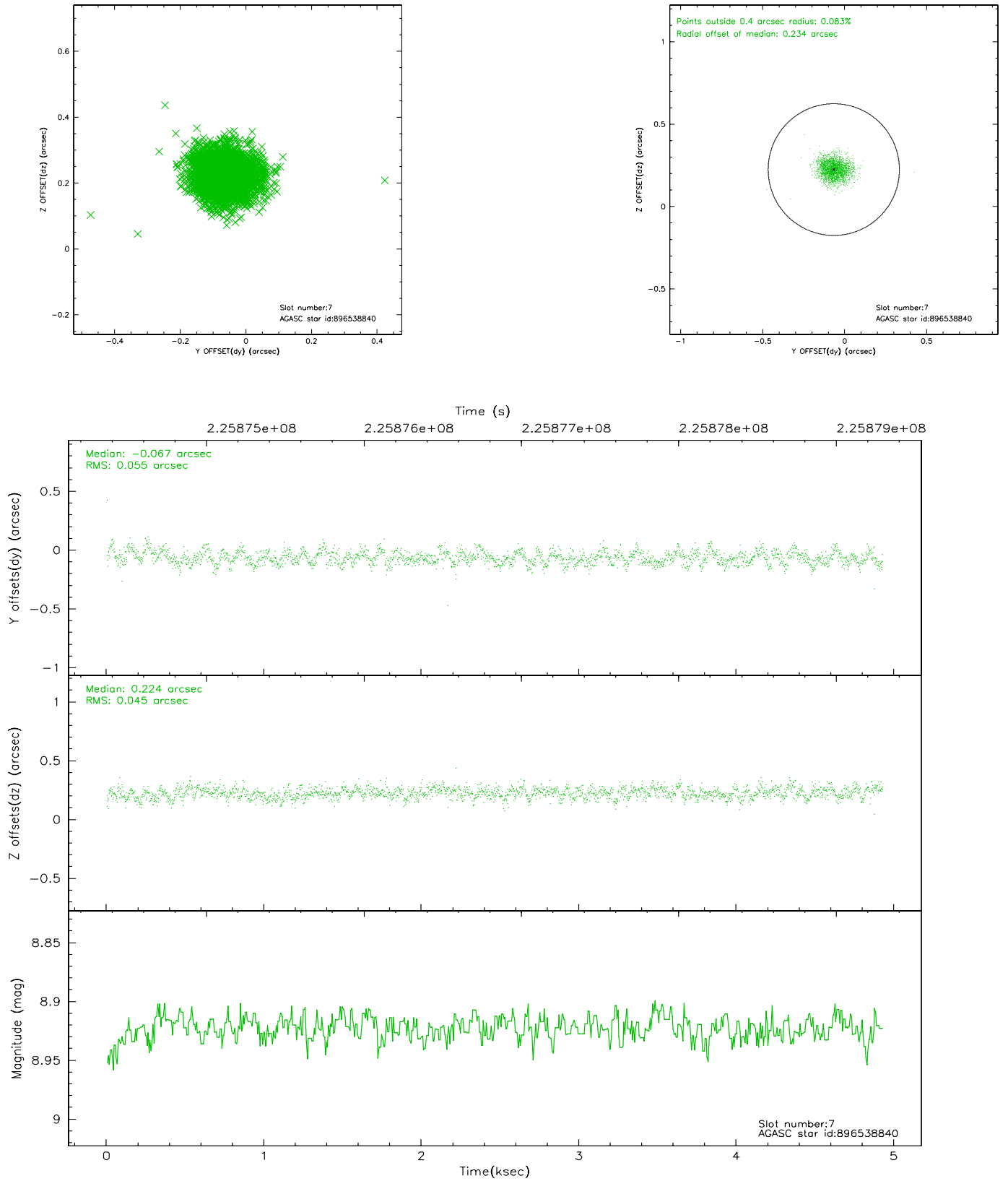
2.4.3 Slot 5



2.4.4 Slot 6

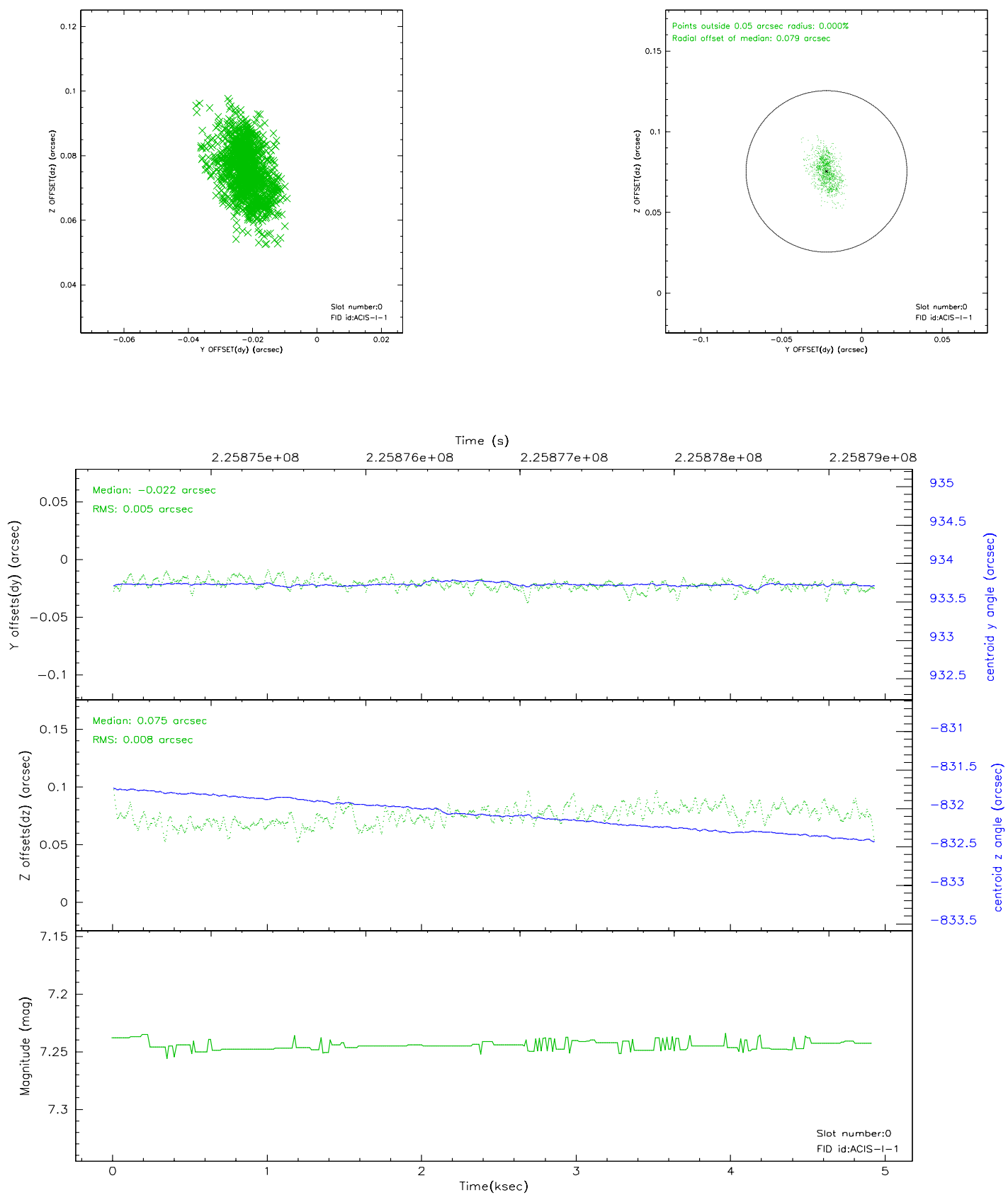


2.4.5 Slot 7

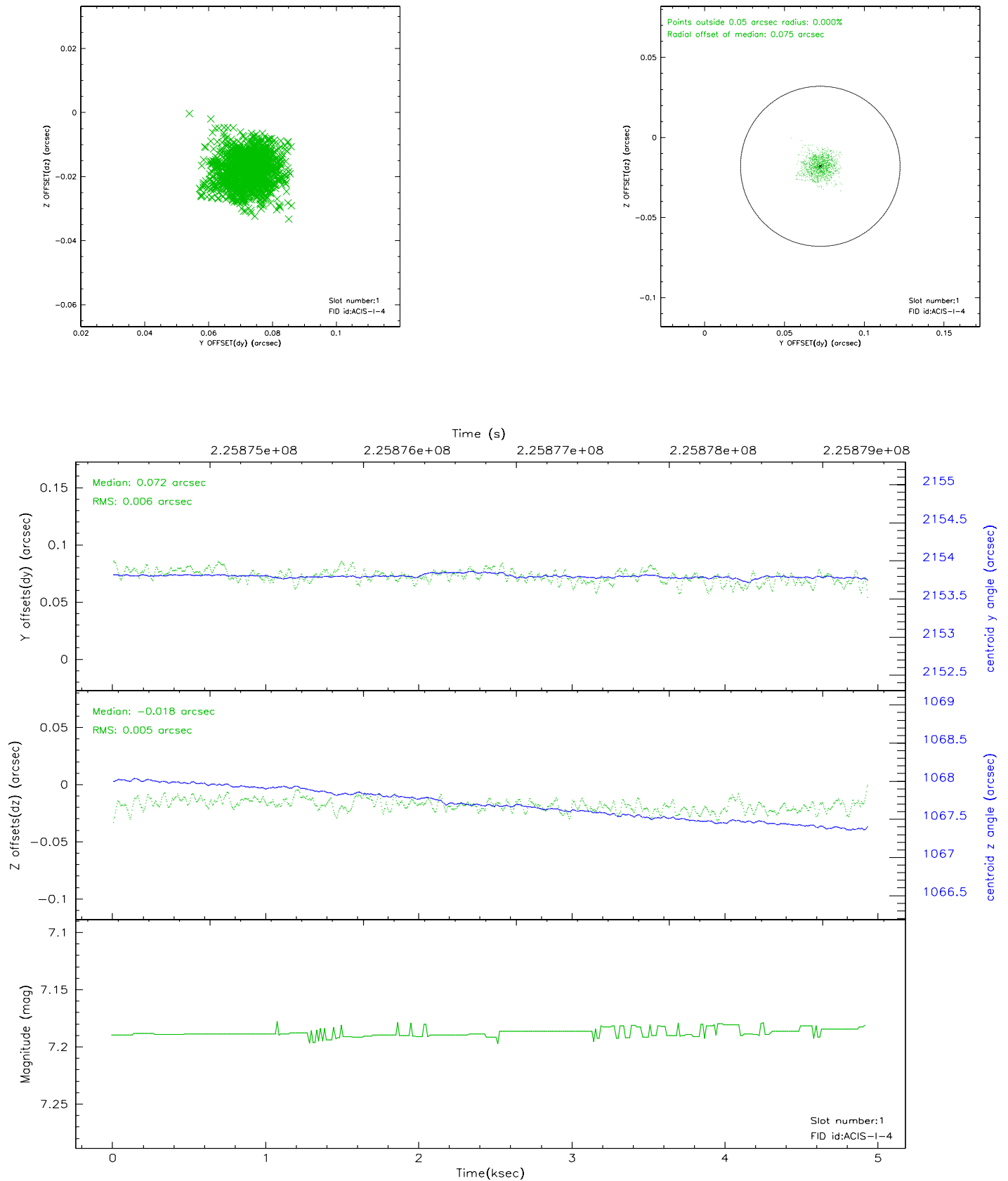


2.5 FID Slots

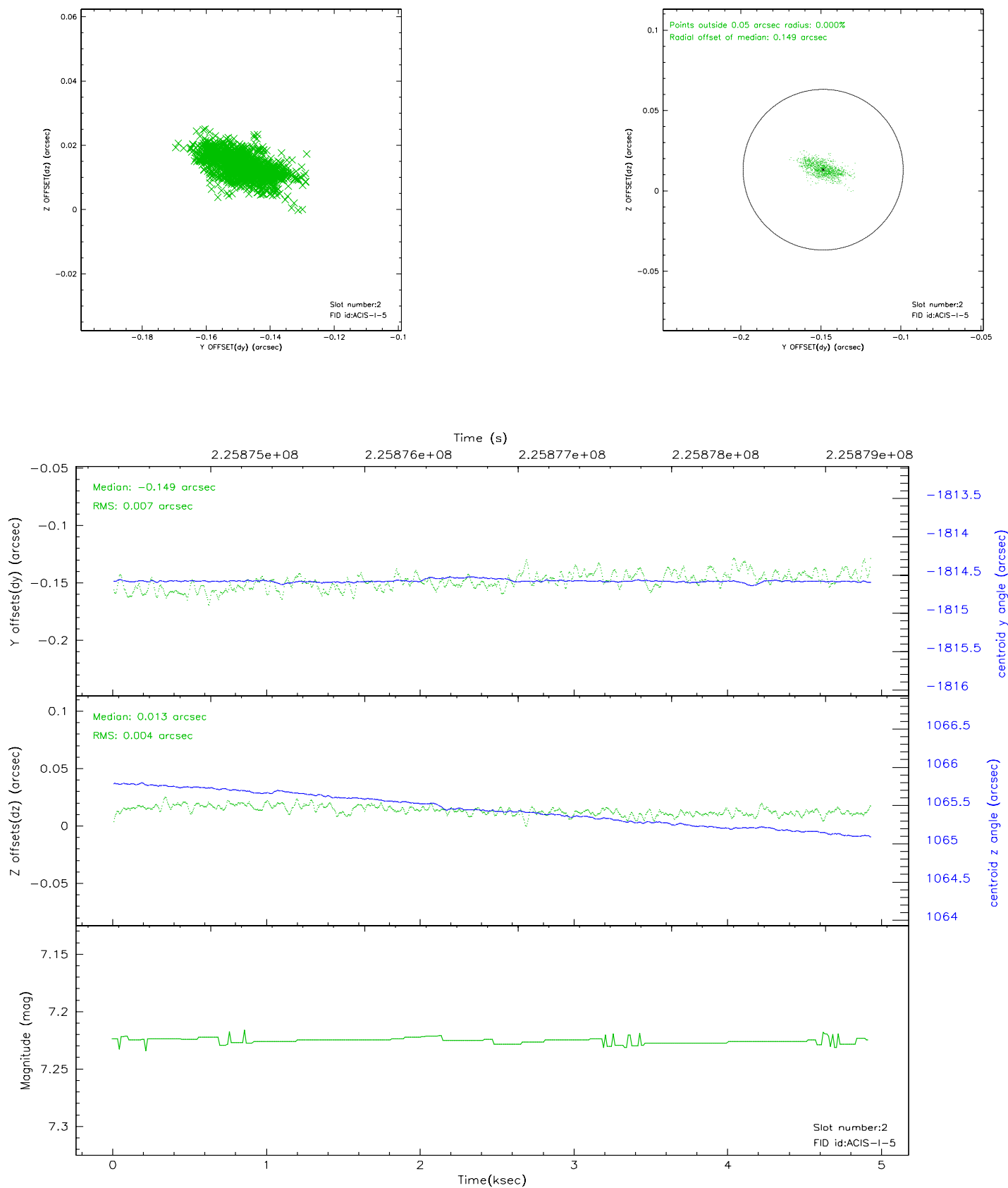
2.5.1 Slot 0



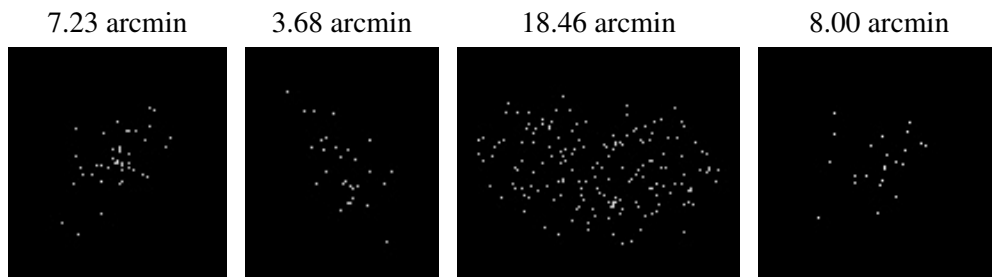
2.5.2 Slot 1



2.5.3 Slot 2



3 Point Sources



A Summary

A.1 Status

V&V Scientist	Jen Lauer
V&V Date (YYYY-MM-DD)	2006.02.27
V&V Edition	1
V&V Disposition and Status	OK
V&V Charge Time	4.919699

A.2 Comments

Window constraint met.