

V&V Reference Report

L2 ASCDS Version : 8.5.1.1

Observation 5940 - L2 Version 3
Chandra X-Ray Center

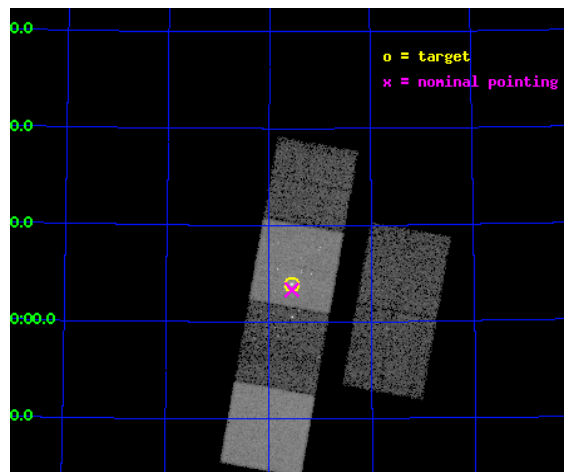
L2 Processing Date : Dec 24 2012

Contents

1	Front	2
2	OBI	3
2.1	OBI	3
2.1.1	Images	3
2.1.2	Bias	3
2.1.3	Parameters	4
2.1.4	Events	4
2.2	Compared Parameters	5
2.3	Aspect	6
2.4	Star Slots	9
2.4.1	Slot 3	9
2.4.2	Slot 4	10
2.4.3	Slot 5	11
2.4.4	Slot 6	12
2.4.5	Slot 7	13
2.5	FID Slots	14
2.5.1	Slot 0	14
2.5.2	Slot 1	15
2.5.3	Slot 2	16
A	Summary	17
A.1	Status	17
A.2	Comments	17

1 Front

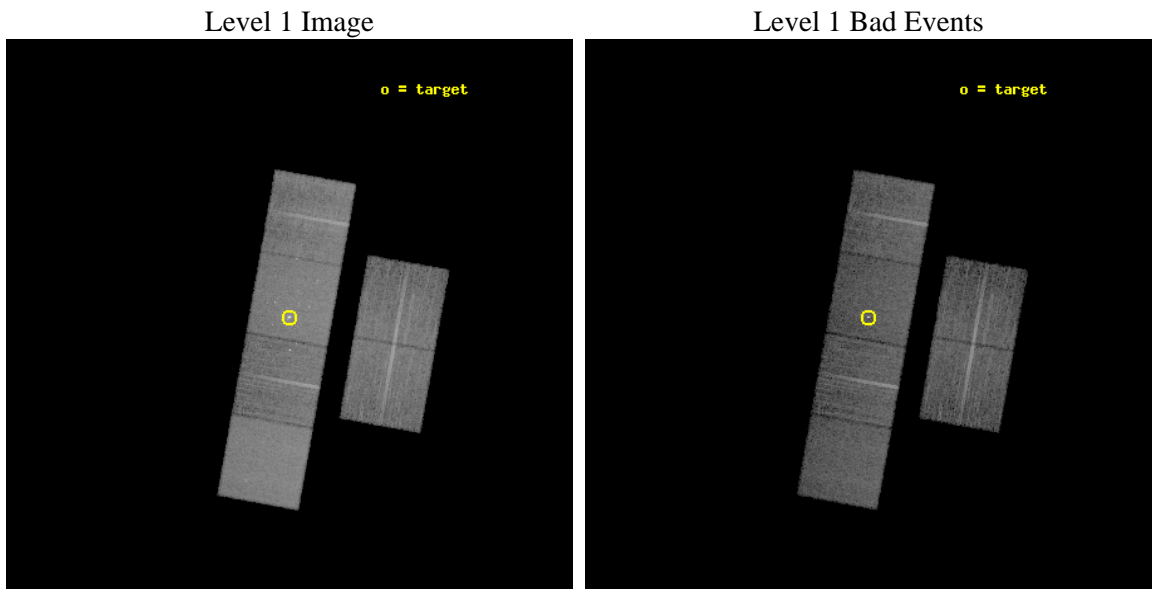
seq_num	600459	Sequence number
obs_id	5940	Observation id
title	An Unprecedented View of a Galaxy's Dynamic X-ray Source Population	
observer	Prof. David Pooley	Principal investigator
object	M81	Source name
dtcycle	0	
cycle	P	events from which exps? Prim/Second/Both
ra_targ	148.888333	Observer's specified target RA [deg]
dec_targ	69.065306	Observer's specified target Dec [deg]
ra_nom	148.88832196979	Nominal RA [deg]
dec_nom	69.055638632647	Nominal Dec [deg]
roll_nom	280.15661520537	Nominal Roll [deg]
revision	3	Processing version of data
ontime	12127.99995482	Sum of GTIs [s]
livetime	11974.427916787	Livetime [s]
ontime2	12127.99995482	Sum of GTIs [s]
ontime3	12127.99995482	Sum of GTIs [s]
ontime5	12127.99995482	Sum of GTIs [s]
ontime6	12127.99995482	Sum of GTIs [s]
ontime7	12127.99995482	Sum of GTIs [s]
ontime8	12127.99995482	Sum of GTIs [s]
l2events	159943	Number of level 2 events



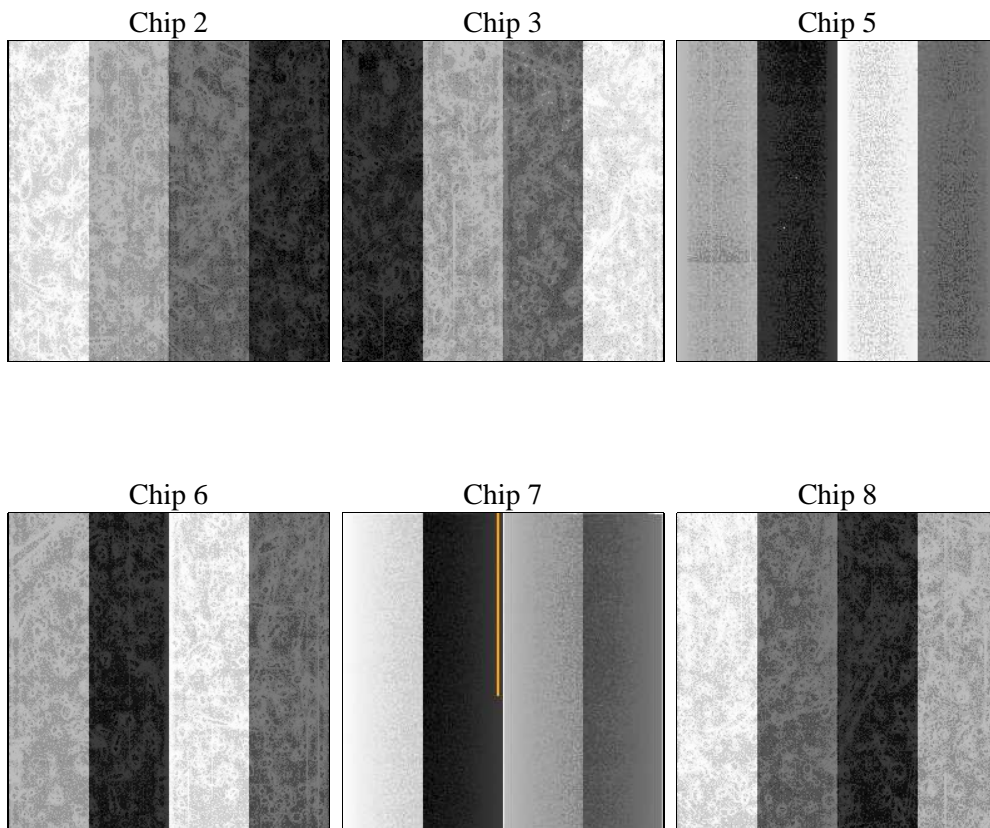
2 OBI

2.1 OBI

2.1.1 Images



2.1.2 Bias



2.1.3 Parameters

obi_num	0	Obi number	sched_exp_time	12000.000000	[s] Scheduled observation exposure time
ascdsver	8.5.1.1	Processing system revision	ontime	12127.99995482	Sum of GTIs [s]
caldsver	4.5.5	 	ontime2	12127.99995482	Sum of GTIs [s]
date	2012-12-24T13:52:38	Date and time of file creation	ontime3	12127.99995482	Sum of GTIs [s]
revision	3	Processing version of data	ontime5	12127.99995482	Sum of GTIs [s]
			ontime6	12127.99995482	Sum of GTIs [s]
			ontime7	12127.99995482	Sum of GTIs [s]
			ontime8	12127.99995482	Sum of GTIs [s]
			l1events	708089	Number of level 1 events

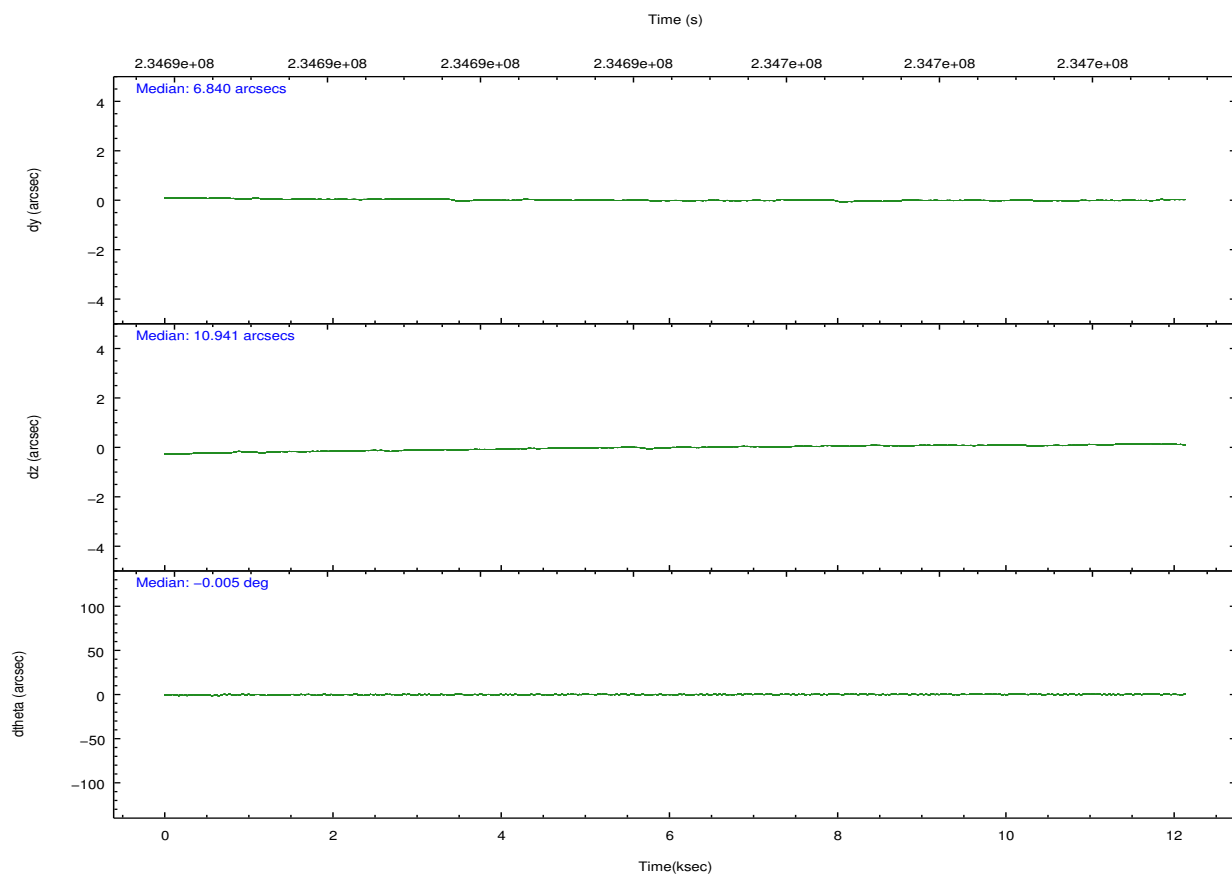
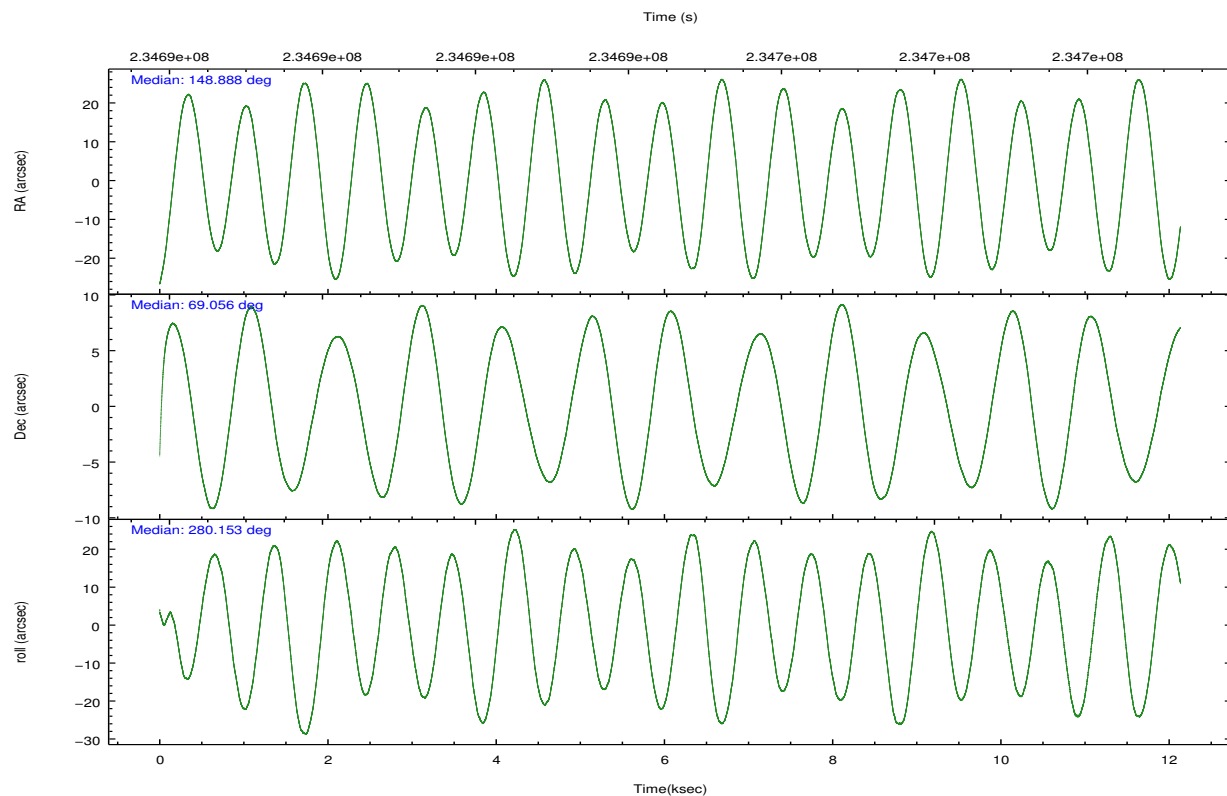
2.1.4 Events

	ccd 2	ccd 3	ccd 5	ccd 6	ccd 7	ccd 8		ccd 2	ccd 3	ccd 5	ccd 6	ccd 7	ccd 8
level 1 events	100146	94824	143996	100257	144578	124288	grade 0 events	5222	4858	3869	6297	6898	8601
rejected events	89056	84155	83399	86989	84504	98044		5%	5%	2%	6%	4%	6%
rejected %	88%	88%	57%	86%	58%	78%	grade 1 events	59	55	190	89	221	68
								0%	0%	0%	0%	0%	0%
							grade 2 events	2406	2216	19538	2768	12994	6041
								2%	2%	13%	2%	8%	4%
							grade 3 events	1053	1081	2397	1156	5595	3000
								1%	1%	1%	1%	3%	2%
							grade 4 events	1081	1084	2352	1178	5448	2740
								1%	1%	1%	1%	3%	2%
							grade 5 events	3894	4231	10262	4445	13037	6024
								3%	4%	7%	4%	9%	4%
							grade 6 events	1853	1992	35631	2468	31935	7194
								1%	2%	24%	2%	22%	5%
							grade 7 events	84578	79307	69757	81856	68450	90620
								84%	83%	48%	81%	47%	72%

2.2 Compared Parameters

Parameter	Planned	Actual	Parameter	Planned	Actual
Instrument	ACIS	ACIS	Obspar format version number	7	7
Detector	ACIS-235678	ACIS-235678	Obspar file type	PREDICTED	ACTUAL
Grating	NONE	NONE	Obspar update status	NONE	UPDATED
Data mode	FAINT	FAINT	Number of optional ACIS chips dropped	0	0
Observation mode	POINTING	POINTING	On-chip summing requested	N	N
[deg] Pointing RA	148.838401	148.888321969793	Subarray requested	NONE	NONE
[deg] Pointing Dec	69.076205	69.05563863264686	Alternating exposures requested	N	N
[deg] Pointing Roll	280.046645	280.1566152053695	[s] Primary exposure time	0.000000	3.2
[mm] SIM focus pos	-0.684267	-0.6828225247311905			
[mm] SIM defocus	0	0.001444936568705701			
[mm] SIM translation stage pos	-190.132523	-190.1400660498719			
[mm] SIM translation stage offset	0	0.00754346686406393			
[s] Observation start time (MET)	234688614.184000	234687259.9613			
Observation start date	2005-06-09T07:15:50	2005-06-09T06:54:19			
[s] Observation end time (MET)	234700614.184000	234701669.41196			
Observation end date	2005-06-09T10:35:50	2005-06-09T10:54:29			
Read mode	TIMED	TIMED			

2.3 Aspect

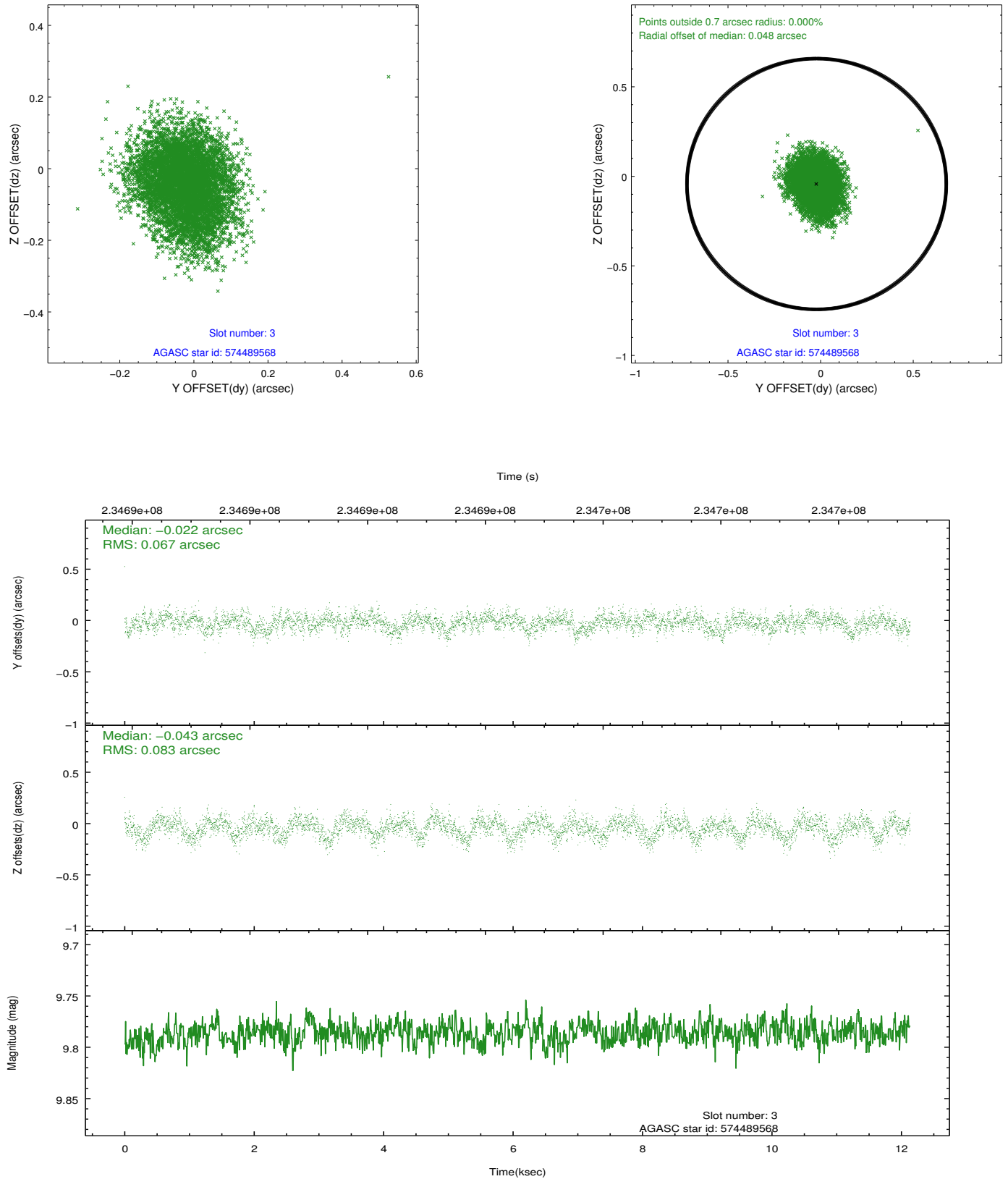


Slot Statistics

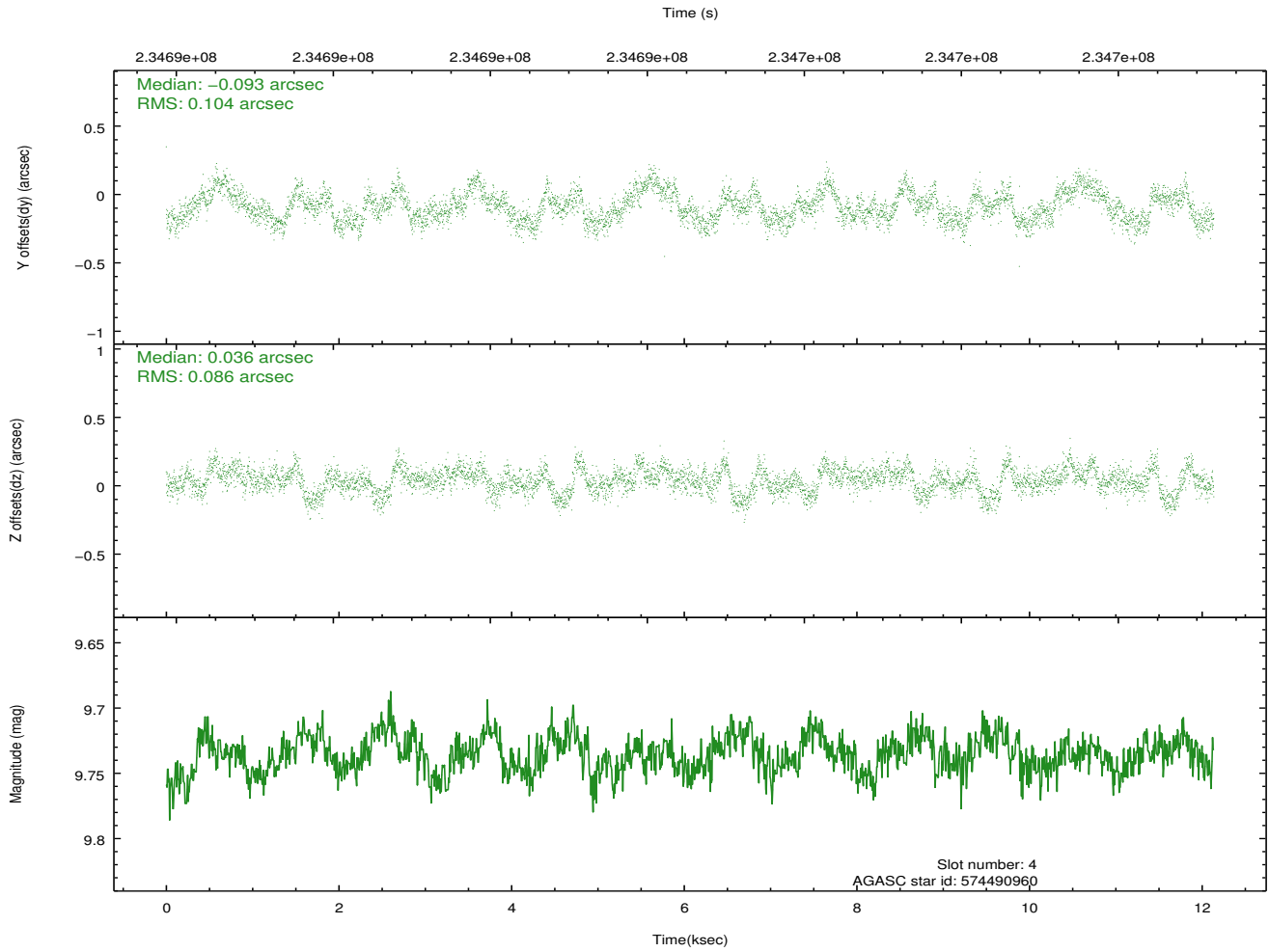
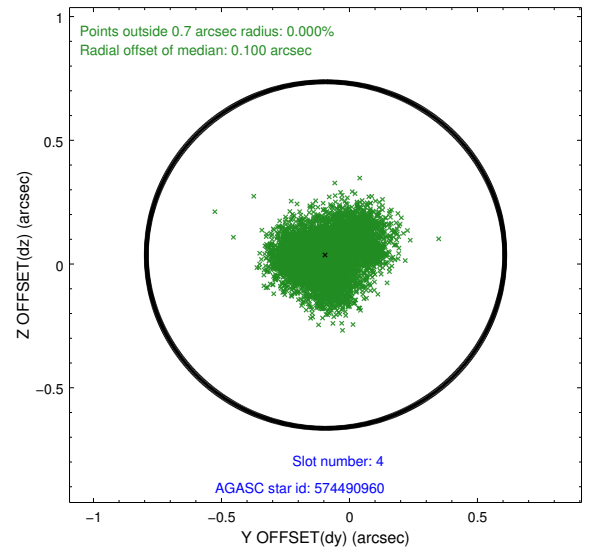
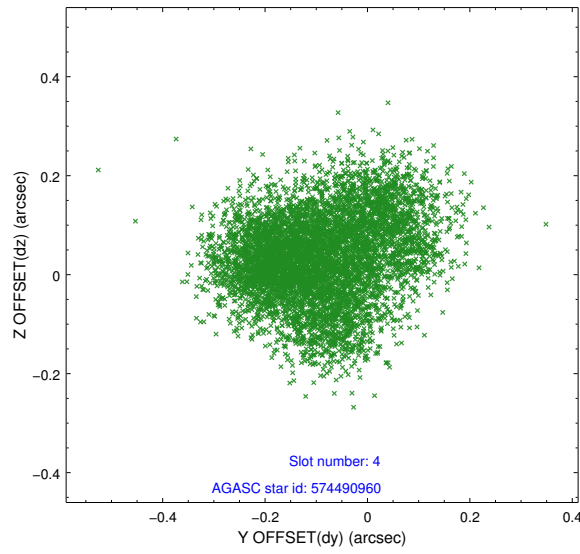
slot	status	id	mag	n_pts	med_dy	med_dz	dr1	dr2	ra	dec	mean_y	mean_z
0	FID	ACIS-S-2	7.10	2960	-0.055	-0.016	0.007	0.011	0.000000	0.000000	-759.62	-1732.22
1	FID	ACIS-S-4	7.20	2960	0.083	0.031	0.007	0.012	0.000000	0.000000	2153.57	175.94
2	FID	ACIS-S-5	7.23	2961	-0.059	-0.006	0.007	0.011	0.000000	0.000000	-1811.97	169.97
3	GUIDE	574489568	9.79	5914	-0.022	-0.043	0.115	0.183	147.223974	69.438157	-1665.11	-1777.71
4	GUIDE	574490960	9.74	5913	-0.093	0.036	0.147	0.222	148.185918	69.658768	-2211.59	-437.72
5	GUIDE	574491712	9.89	5889	-0.126	-0.053	0.138	0.217	147.262590	69.570889	-2123.94	-1634.44
6	GUIDE	574497600	10.44	5897	0.130	-0.057	0.160	0.264	147.824120	68.451903	1968.55	-1710.86
7	GUIDE	574496360	9.46	5916	0.106	0.127	0.120	0.191	150.806604	68.529829	2349.01	2217.67

2.4 Star Slots

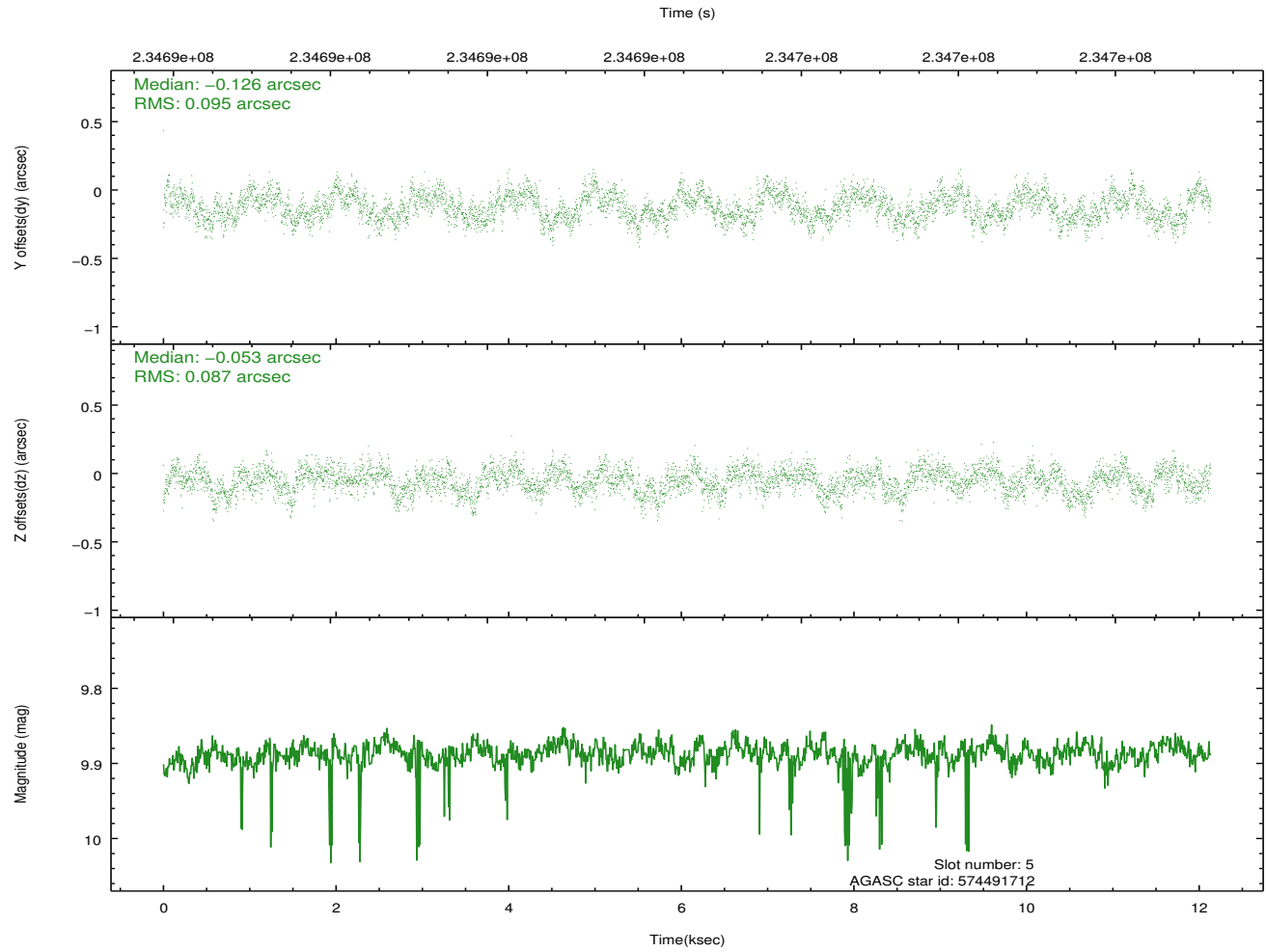
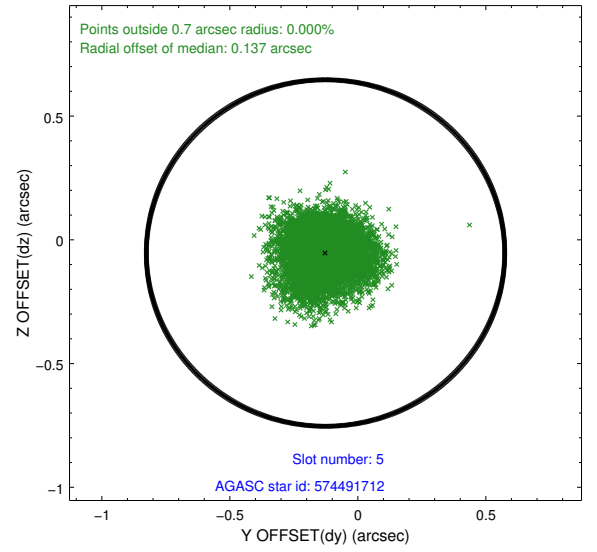
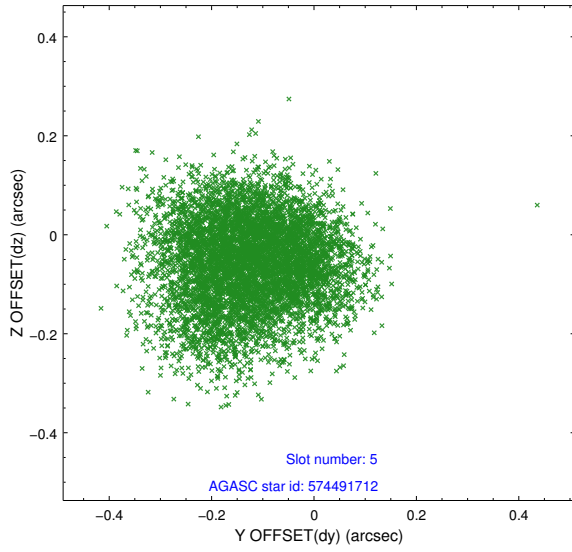
2.4.1 Slot 3



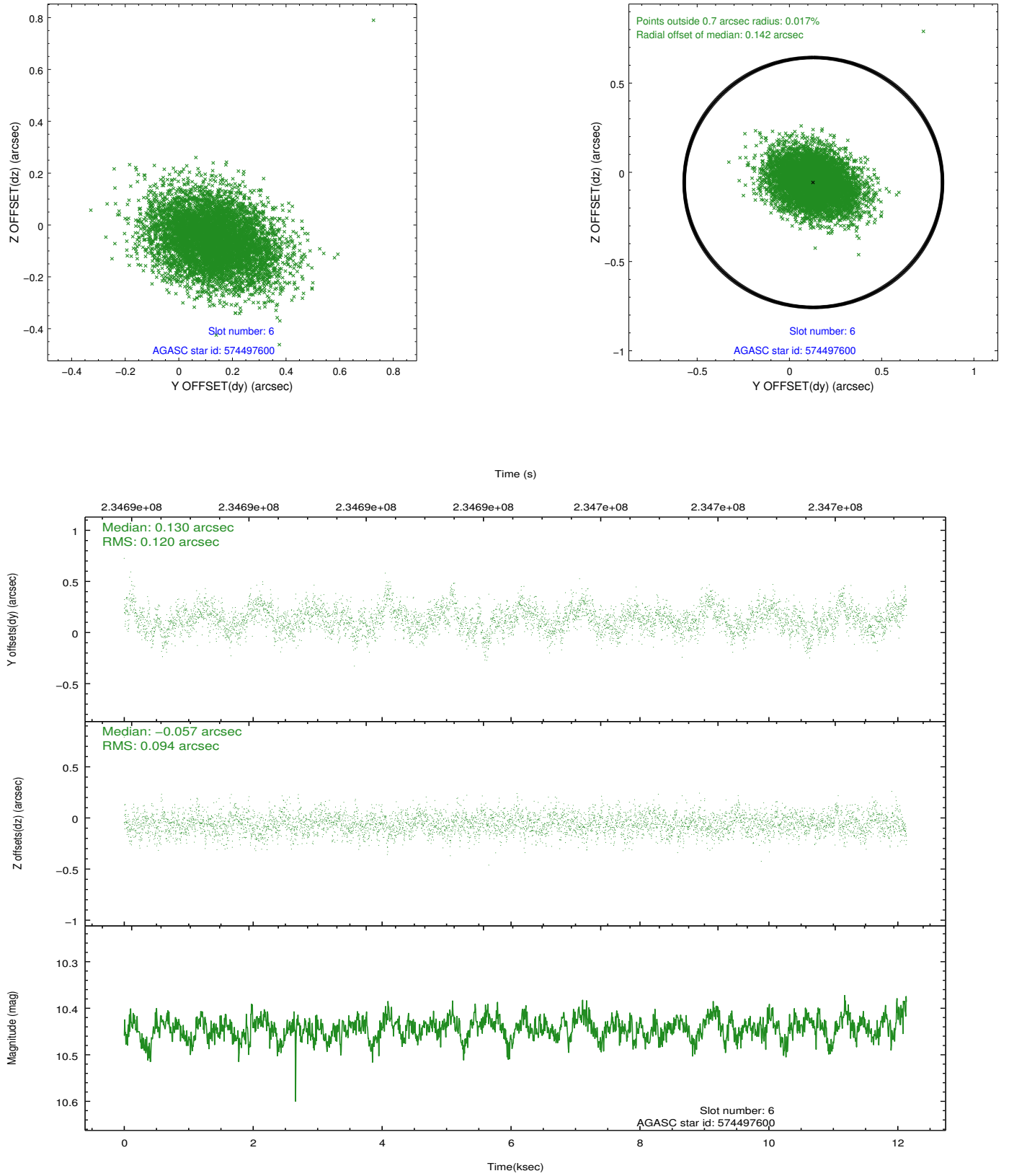
2.4.2 Slot 4



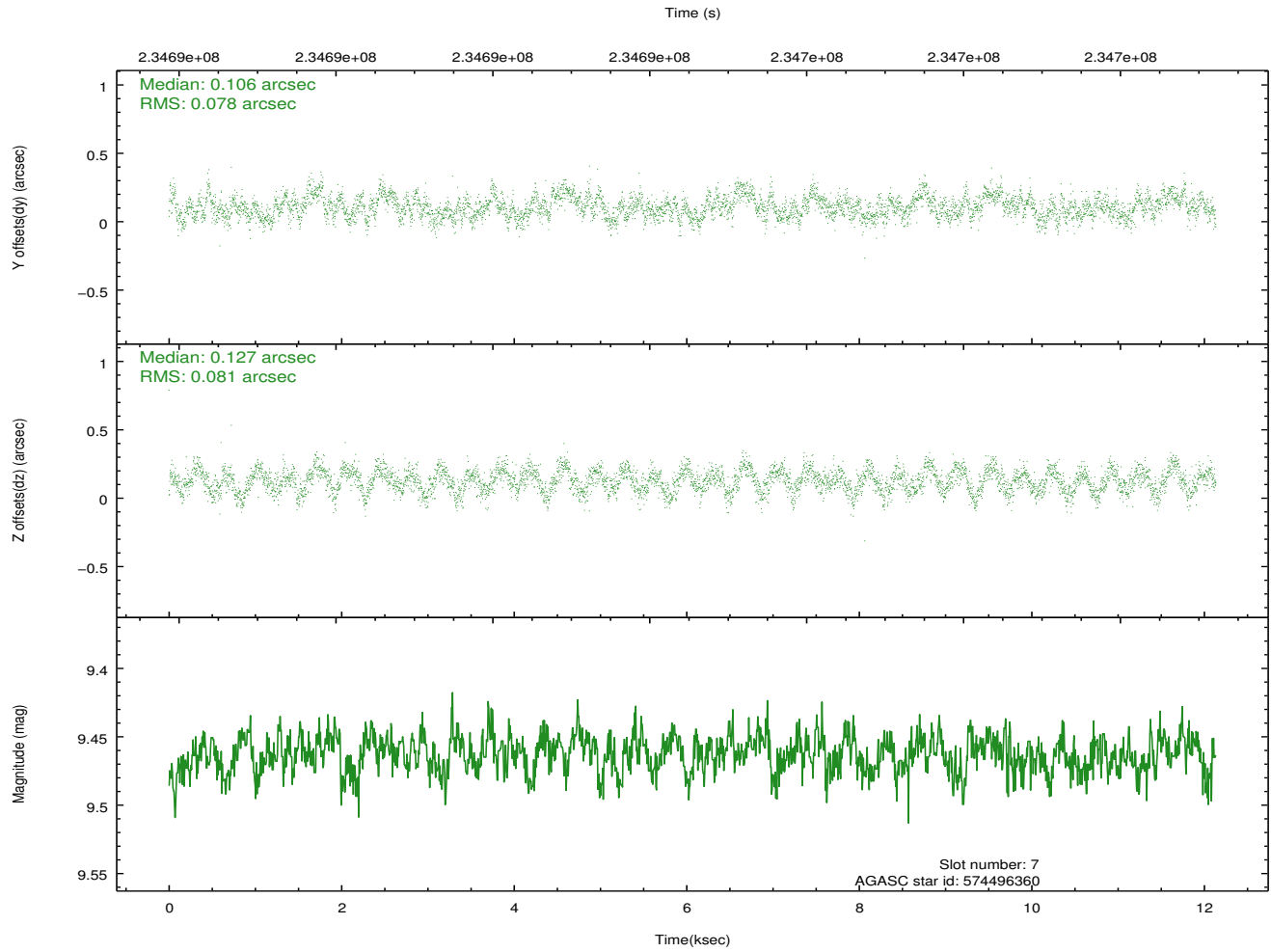
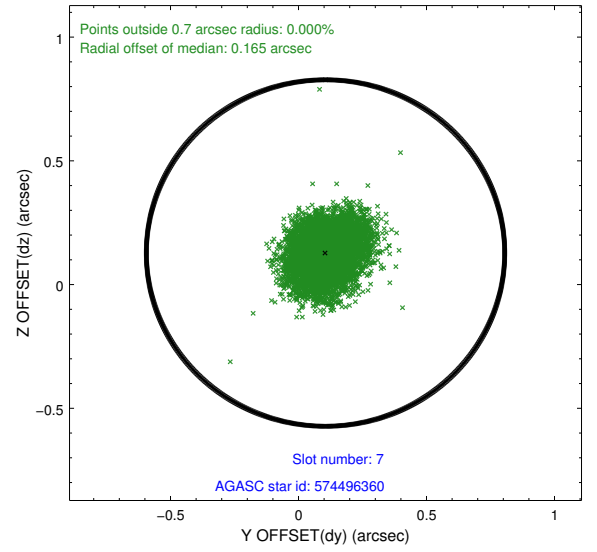
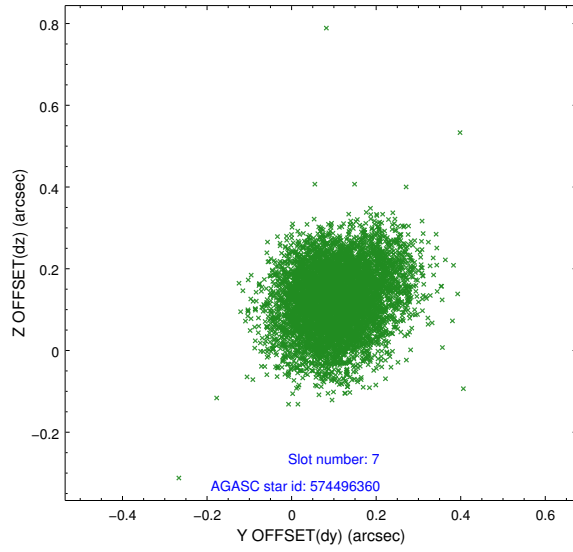
2.4.3 Slot 5



2.4.4 Slot 6

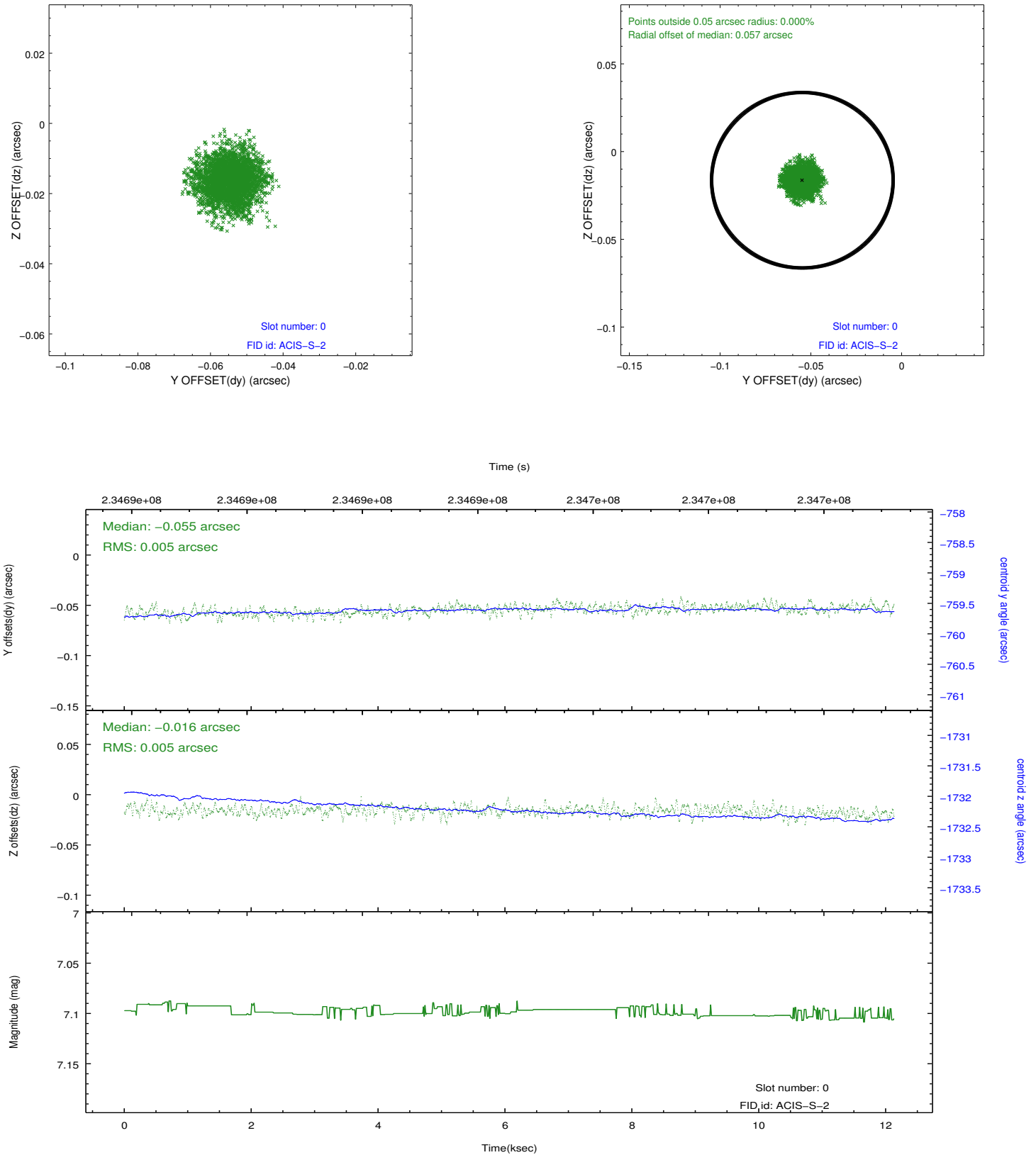


2.4.5 Slot 7

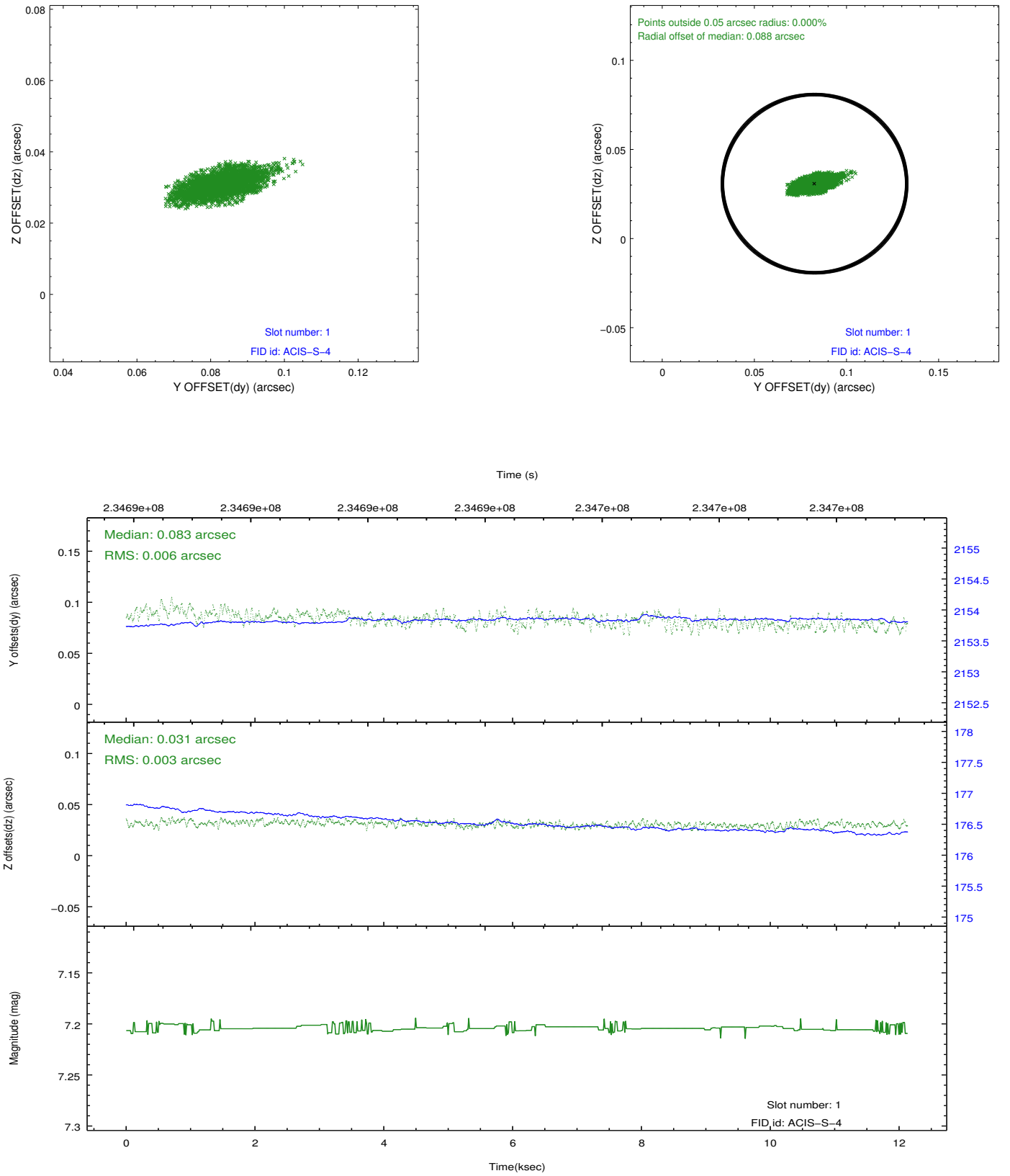


2.5 FID Slots

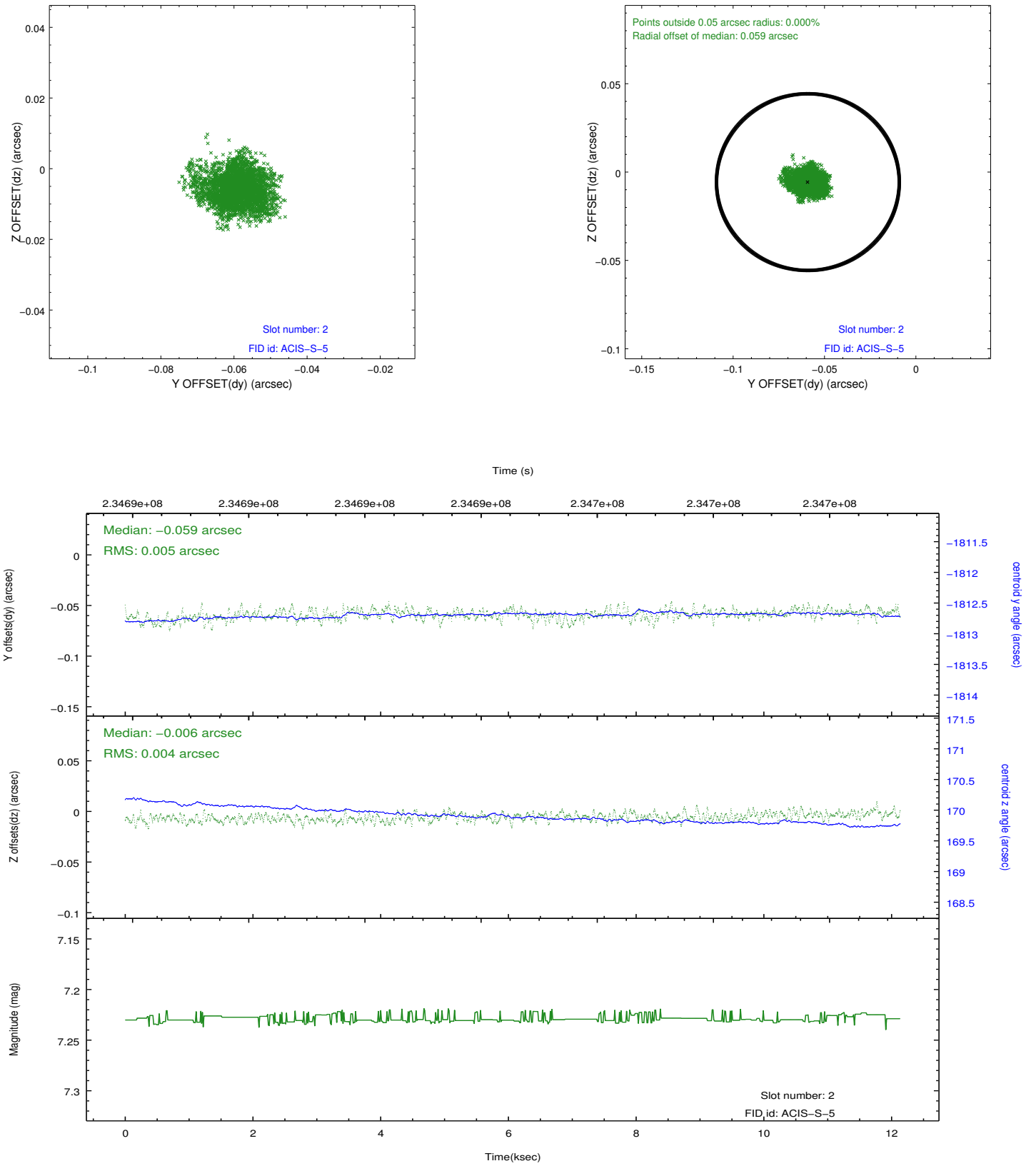
2.5.1 Slot 0



2.5.2 Slot 1



2.5.3 Slot 2



A Summary

A.1 Status

V&V Scientist	Jen Lauer
V&V Date (YYYY-MM-DD)	2013.01.17
V&V Edition	1
V&V Disposition and Status	OK
V&V Charge Time	12.12799

A.2 Comments

Roll preference met. Monitor constraint met.