

V&V Reference Report

L2 ASCDS Version : 7.6.7.1

Observation 5940 - L2 Version 002
Chandra X-Ray Center

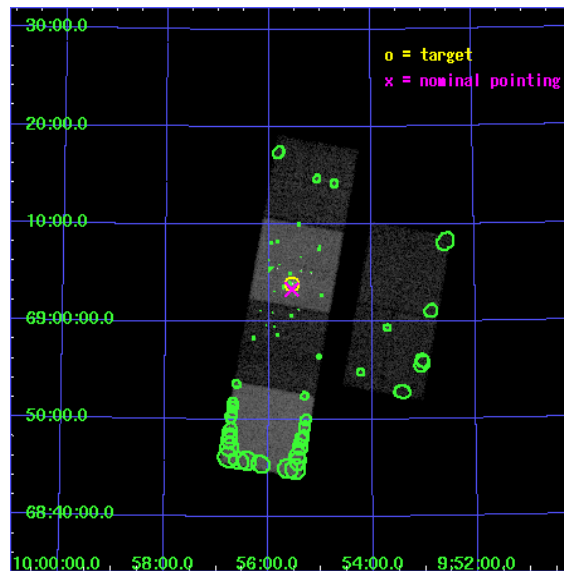
L2 Processing Date : Mar 10 2006

Contents

1	Front	2
2	OBI	3
2.1	OBI	3
2.1.1	Images	3
2.1.2	Bias	3
2.1.3	Parameters	4
2.1.4	Events	4
2.2	Compared Parameters	5
2.3	Aspect	6
2.4	Star Slots	9
2.4.1	Slot 3	9
2.4.2	Slot 4	10
2.4.3	Slot 5	11
2.4.4	Slot 6	12
2.4.5	Slot 7	13
2.5	FID Slots	14
2.5.1	Slot 0	14
2.5.2	Slot 1	15
2.5.3	Slot 2	16
3	Point Sources	17
A	Summary	18
A.1	Status	18
A.2	Comments	18

1 Front

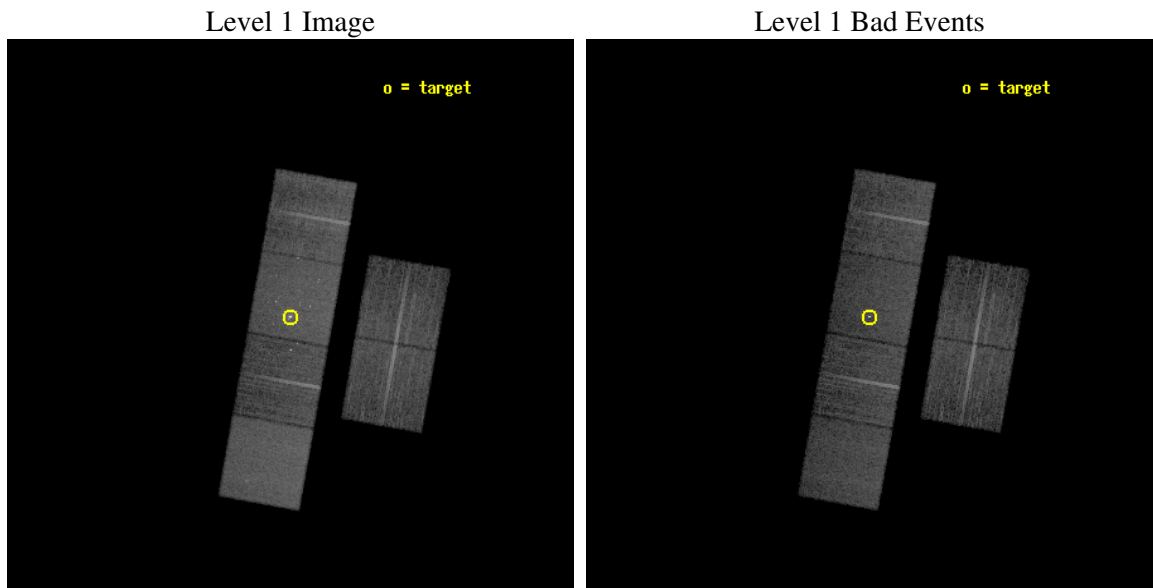
seq_num	600459
obs_id	5940
title	An Unprecedented View of a Galaxy's Dynamic X-ray Source Population
observer	Dr. David Pooley
object	M81
dtcycle	0
cycle	P
ra_targ	148.888333
dec_targ	69.065306
ra_nom	148.88830848618
dec_nom	69.055665990305
roll_nom	280.15662778538
revision	2
ontime	12127.99995482
livetime	11974.427916787
ontime2	12127.99995482
ontime3	12127.99995482
ontime5	12127.99995482
ontime6	12127.99995482
ontime7	12127.99995482
ontime8	12127.99995482
l2events	154109



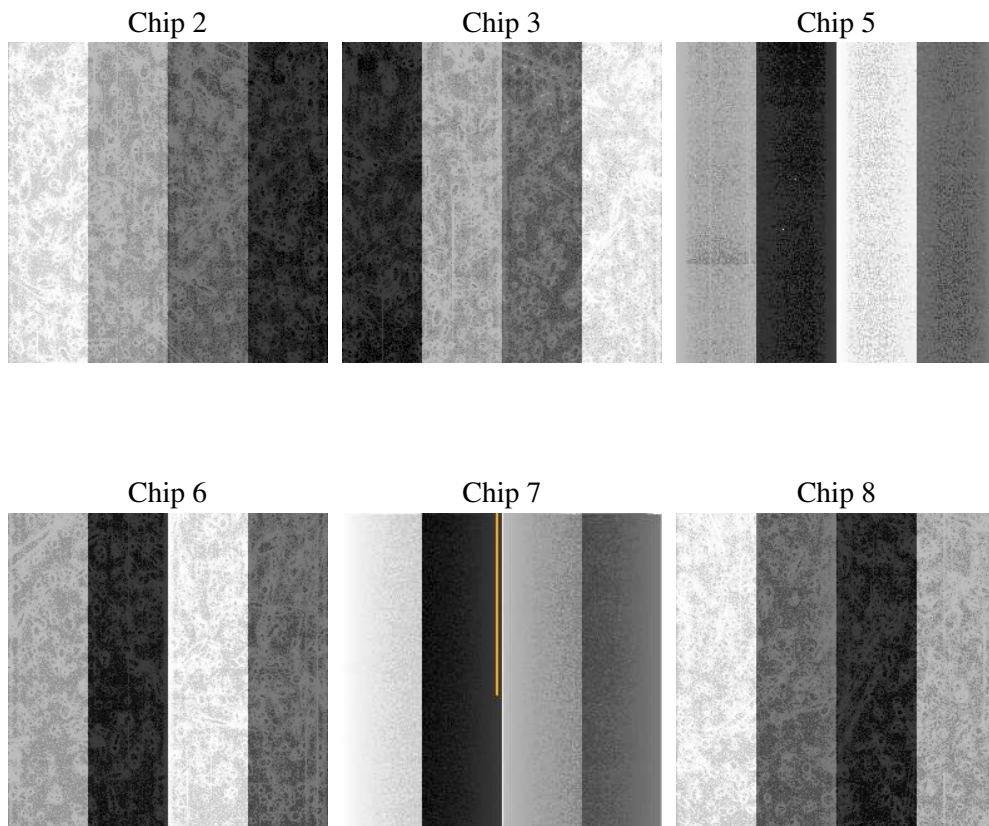
2 OBI

2.1 OBI

2.1.1 Images



2.1.2 Bias



2.1.3 Parameters

obi_num	0
ascdsver	7.6.7.1
caldsver	3.2.1
date	2006-03-10T05:17:26
revision	2

sched_exp_time	12000.000000
ontime	12746.855081826
ontime2	12746.855051905
ontime3	12746.855051905
ontime5	12746.855081826
ontime6	12746.855051905
ontime7	12746.855081826
ontime8	12746.855081826
l1events	708089

2.1.4 Events

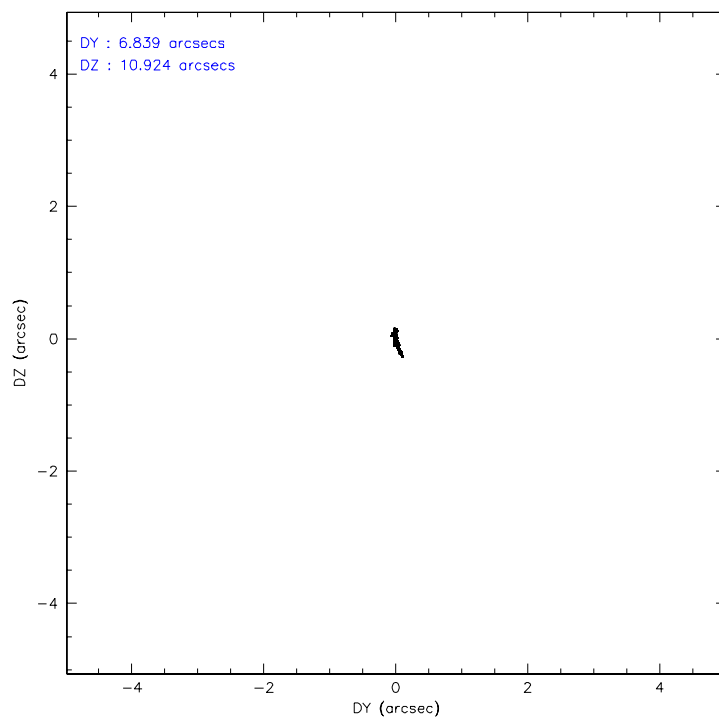
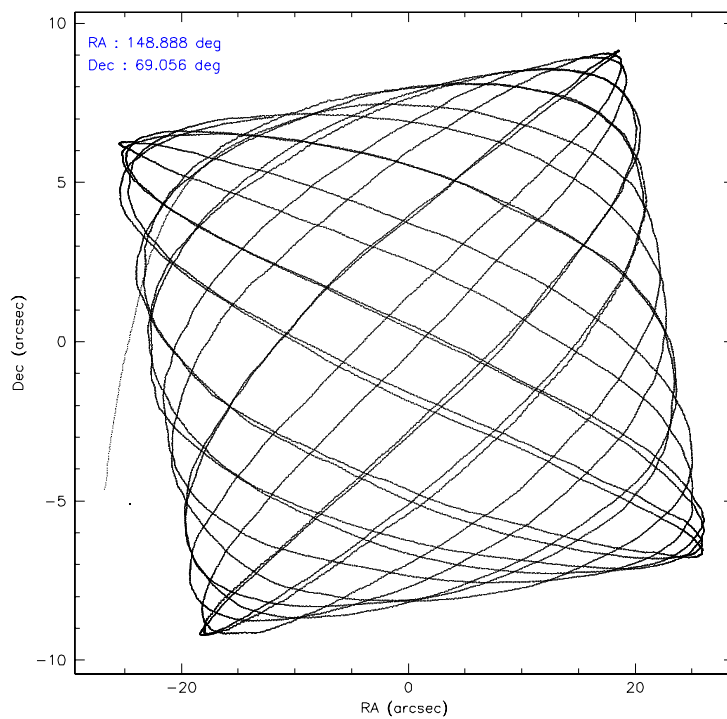
	ccd 2	ccd 3	ccd 5	ccd 6	ccd 7	ccd 8
level 1 events	100146	94824	143996	100257	144578	124288
rejected events	89058	84157	85411	86991	88888	98047
rejected %	88%	88%	59%	86%	61%	78%

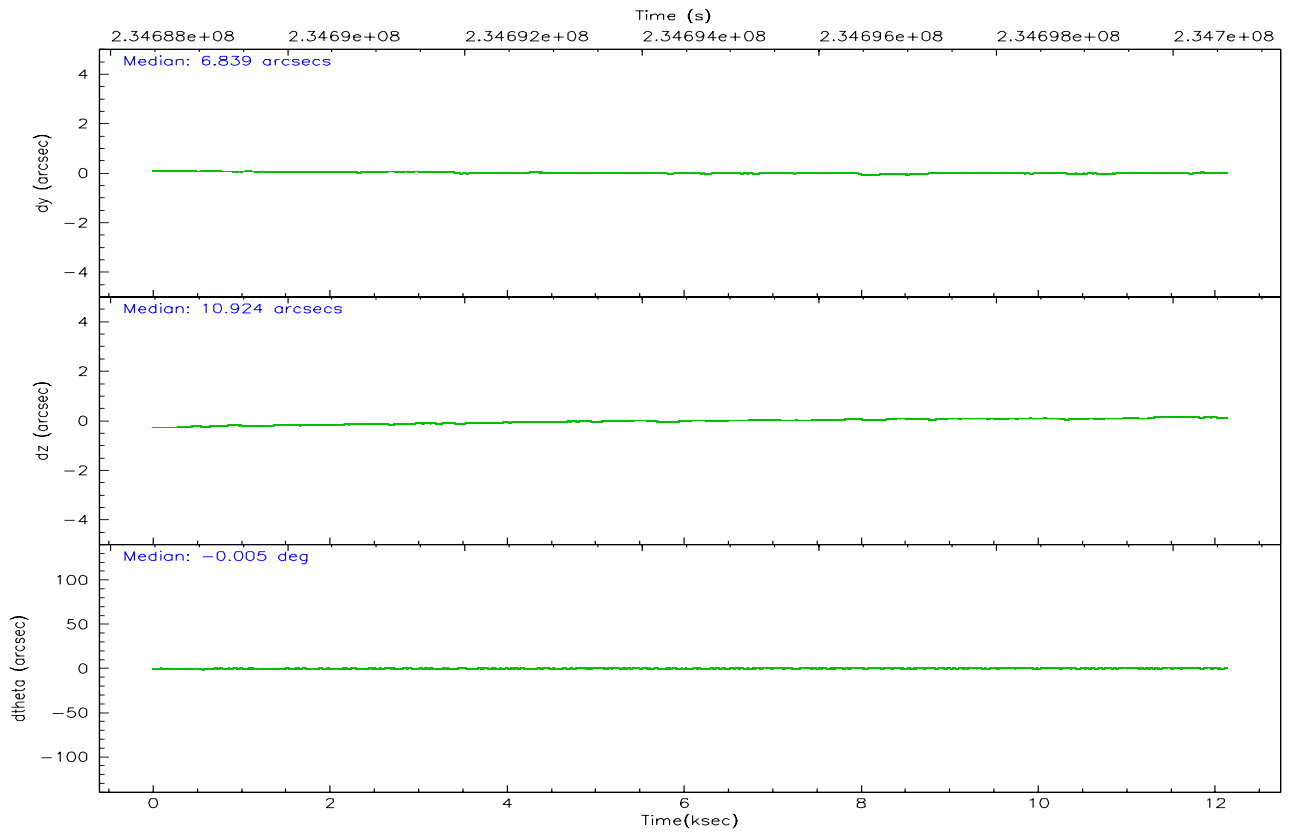
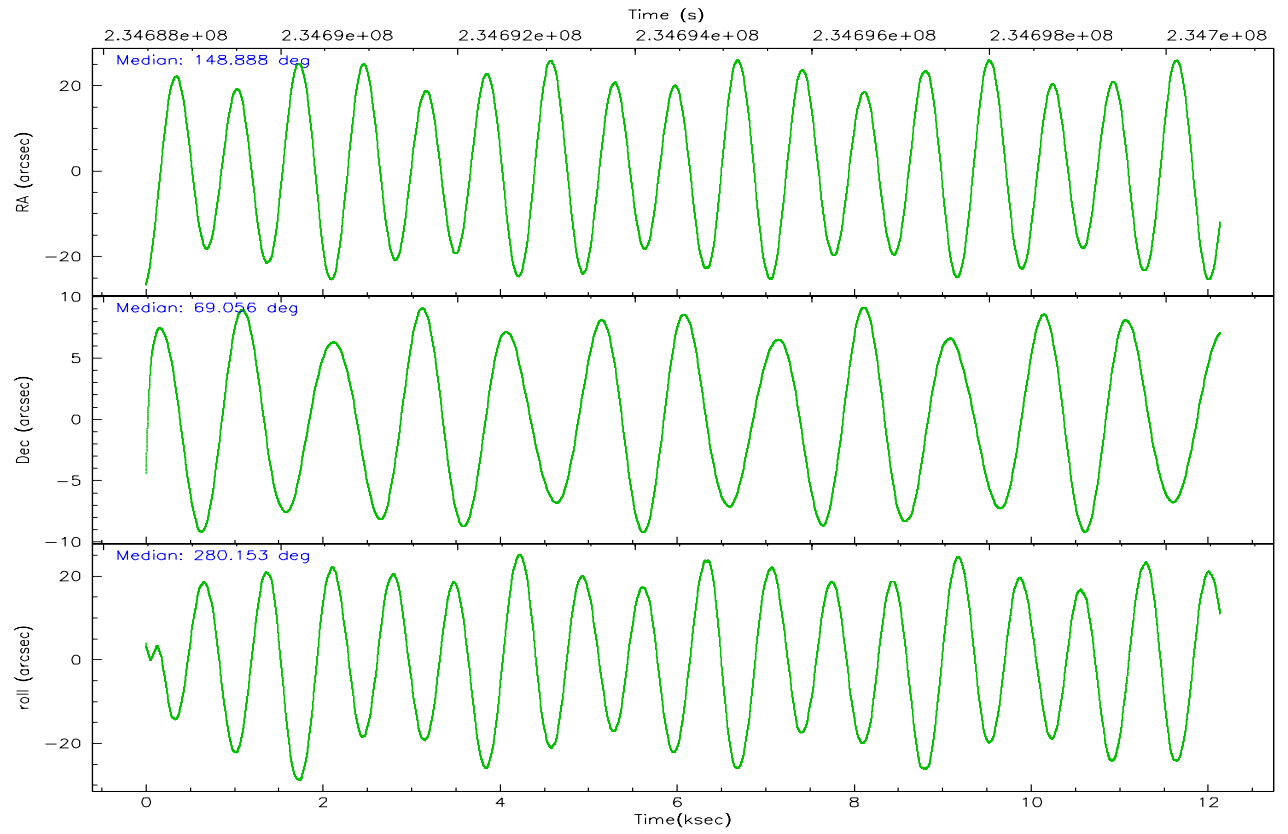
	ccd 2	ccd 3	ccd 5	ccd 6	ccd 7	ccd 8
grade 0 events	5216	4848	2390	6289	4682	8592
	5%	5%	1%	6%	3%	6%
grade 1 events	59	54	126	89	159	66
	0%	0%	0%	0%	0%	0%
grade 2 events	2412	2225	19301	2776	14696	6048
	2%	2%	13%	2%	10%	4%
grade 3 events	1051	1079	1364	1153	3172	2995
	1%	1%	0%	1%	2%	2%
grade 4 events	1079	1082	1332	1173	2989	2738
	1%	1%	0%	1%	2%	2%
grade 5 events	3889	4224	6712	4442	8950	6021
	3%	4%	4%	4%	6%	4%
grade 6 events	1854	1994	37285	2470	32740	7200
	1%	2%	25%	2%	22%	5%
grade 7 events	84586	79318	75486	81865	77190	90628
	84%	83%	52%	81%	53%	72%

2.2 Compared Parameters

Parameter	Planned	Actual	Parameter	Planned	Actual
Instrument	ACIS	ACIS	Obspar format version number	6	6
Detector	ACIS-235678	ACIS-235678	Obspar file type	PREDICTED	ACTUAL
Grating	NONE	NONE	Obspar update status	NONE	UPDATED
Data mode	FAINT	FAINT	On-chip summing requested	N	N
Observation mode	POINTING	POINTING	Subarray requested	NONE	NONE
Pointing RA	148.838401	148.8883084861833	Alternating exposures requested	N	N
Pointing Dec	69.076205	69.05566599030482	Primary exposure time	0.000000	3.2
Pointing Roll	280.046645	280.1566277853837			
SIM focus pos (mm)	-0.684267	-0.6828225247311905			
SIM defocus (mm)	0	0.001444936568705701			
SIM translation stage pos (mm)	-190.132523	-190.1400660498719			
SIM translation stage offset (mm)	0	0.00754346686406393			
Observation start time	234688614.184000	234687259.9613			
Observation start date	2005-06-09T07:15:50	2005-06-09T06:54:19			
Observation end time	234700614.184000	234701669.41196			
Observation end date	2005-06-09T10:35:50	2005-06-09T10:54:29			
Read mode	TIMED	TIMED			

2.3 Aspect



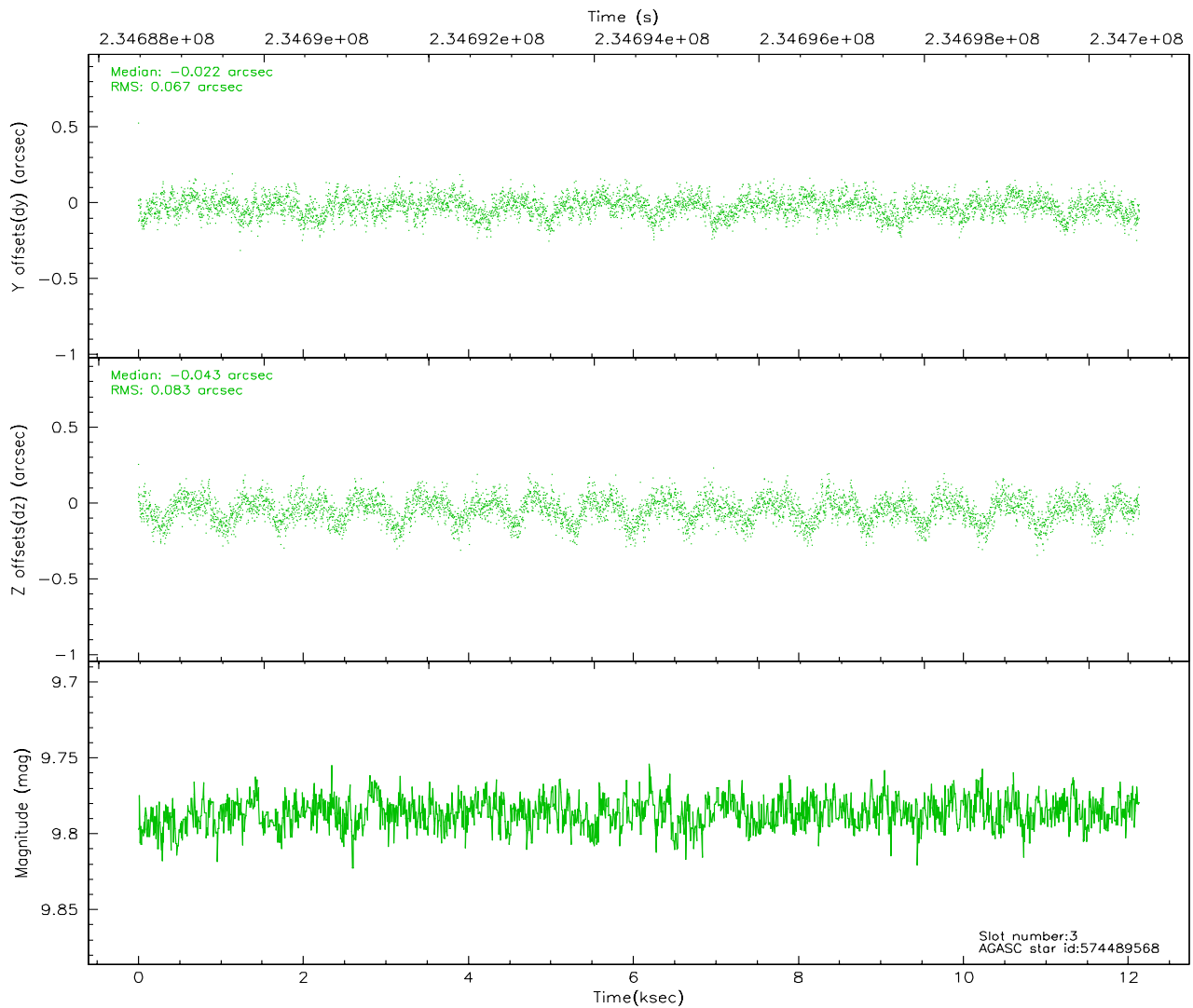
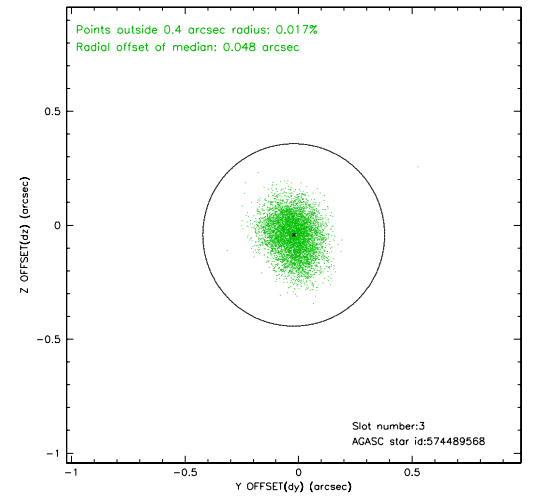
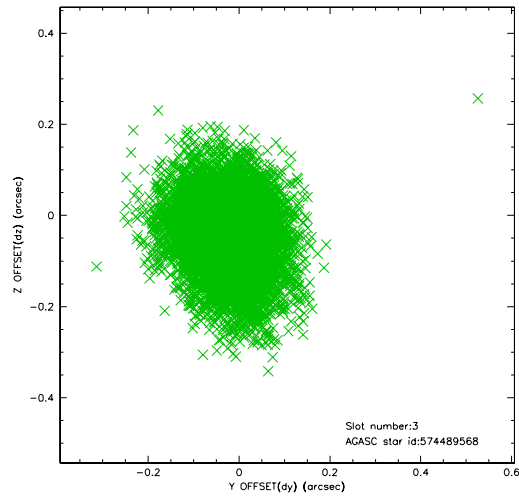


Slot Statistics

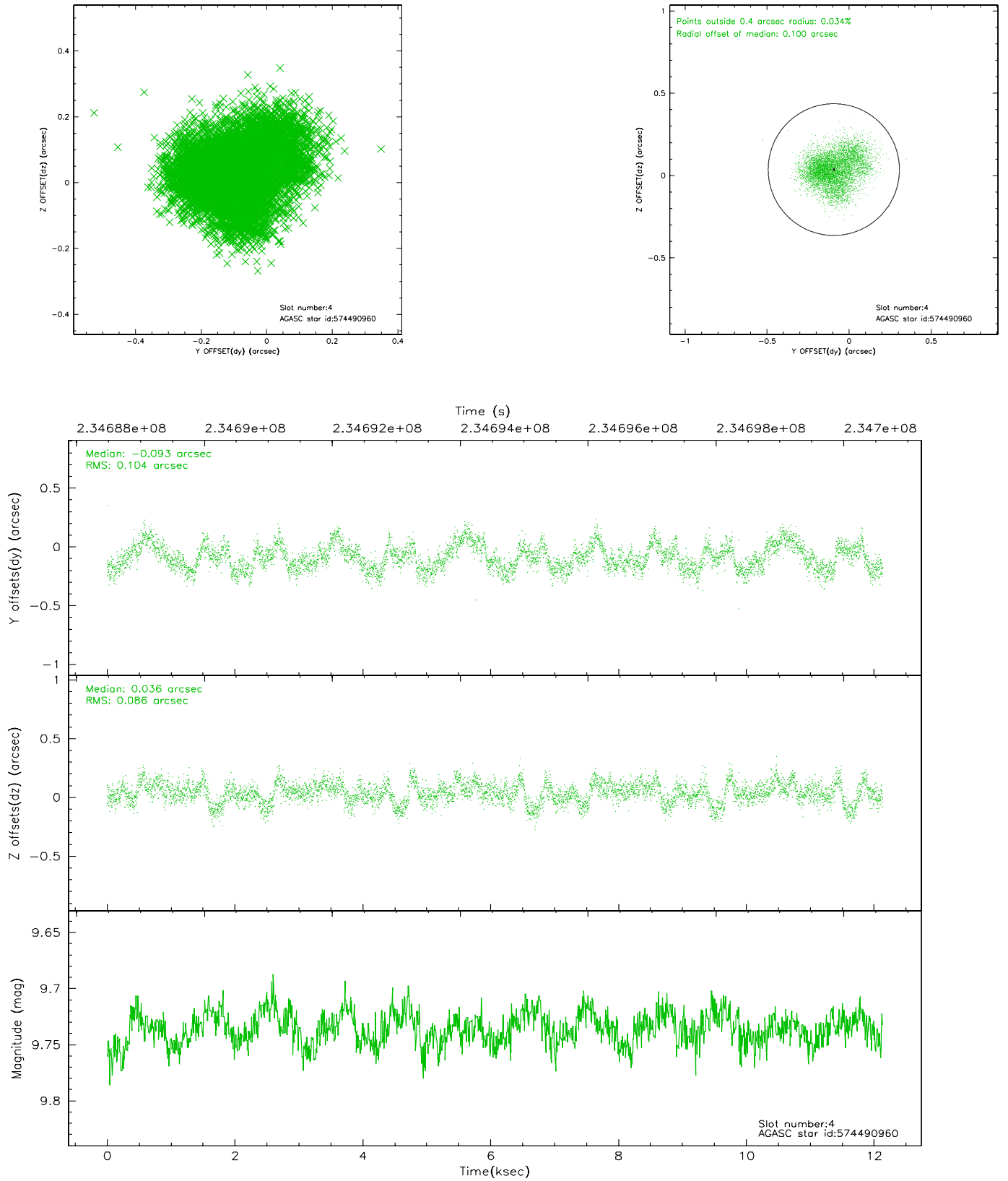
slot	status	id	mag	n_pts	med_dy	med_dz	dr1	dr2	ra	dec	mean_y	mean_z
0	FID	ACIS-S-2	7.10	2960	-0.043	0.007	0.007	0.011	0.000000	0.000000	-759.61	-1732.18
1	FID	ACIS-S-4	7.20	2960	0.041	0.019	0.006	0.010	0.000000	0.000000	2153.53	175.94
2	FID	ACIS-S-5	7.23	2961	-0.028	-0.017	0.006	0.010	0.000000	0.000000	-1811.94	169.97
3	GUIDE	574489568	9.79	5914	-0.022	-0.043	0.115	0.183	147.223974	69.438157	-1665.11	-1777.71
4	GUIDE	574490960	9.74	5913	-0.093	0.036	0.147	0.222	148.185918	69.658768	-2211.59	-437.72
5	GUIDE	574491712	9.89	5889	-0.126	-0.053	0.138	0.217	147.262590	69.570889	-2123.94	-1634.44
6	GUIDE	574497600	10.44	5897	0.130	-0.057	0.160	0.264	147.824120	68.451903	1968.55	-1710.86
7	GUIDE	574496360	9.46	5916	0.106	0.127	0.120	0.191	150.806604	68.529829	2349.01	2217.67

2.4 Star Slots

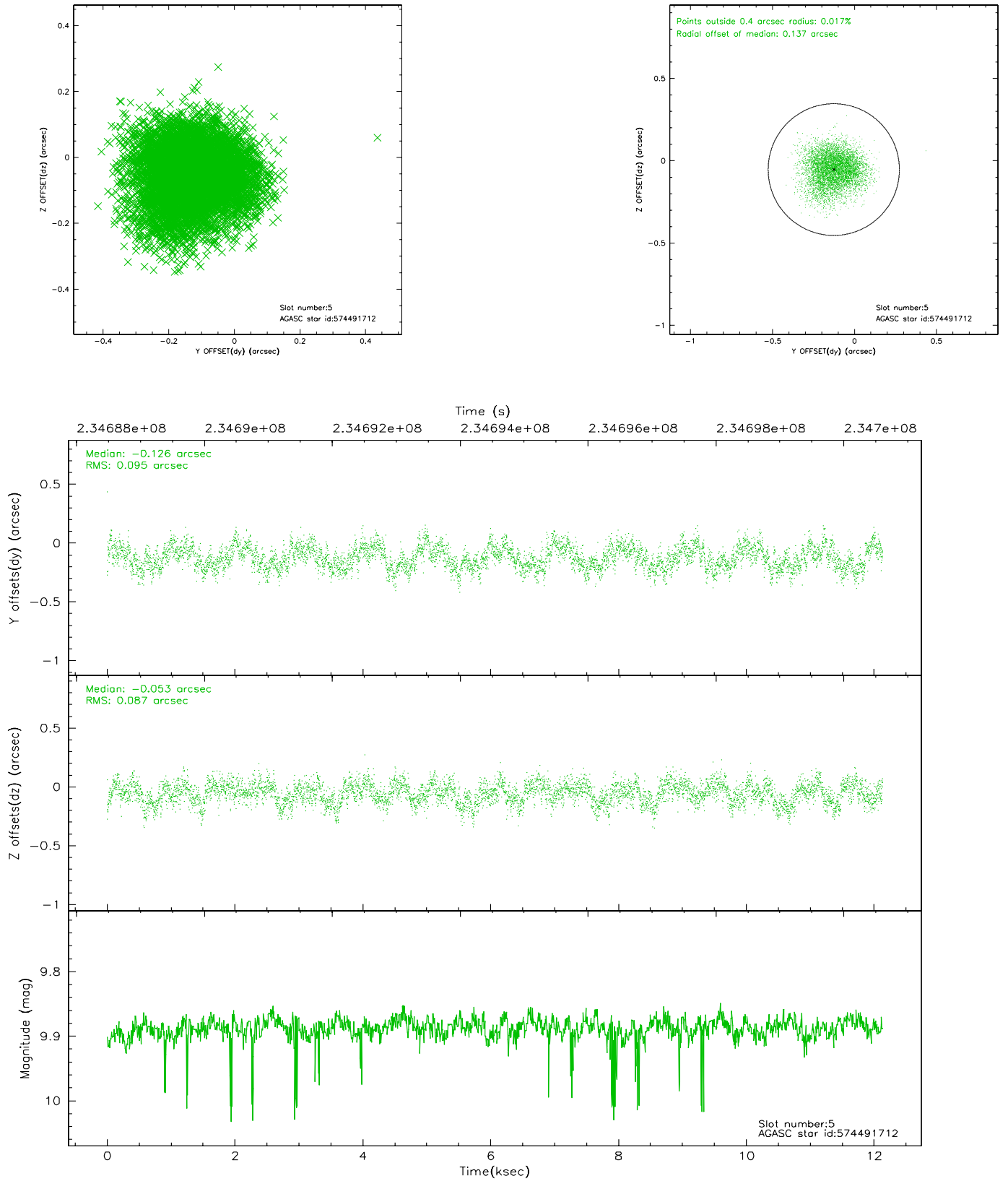
2.4.1 Slot 3



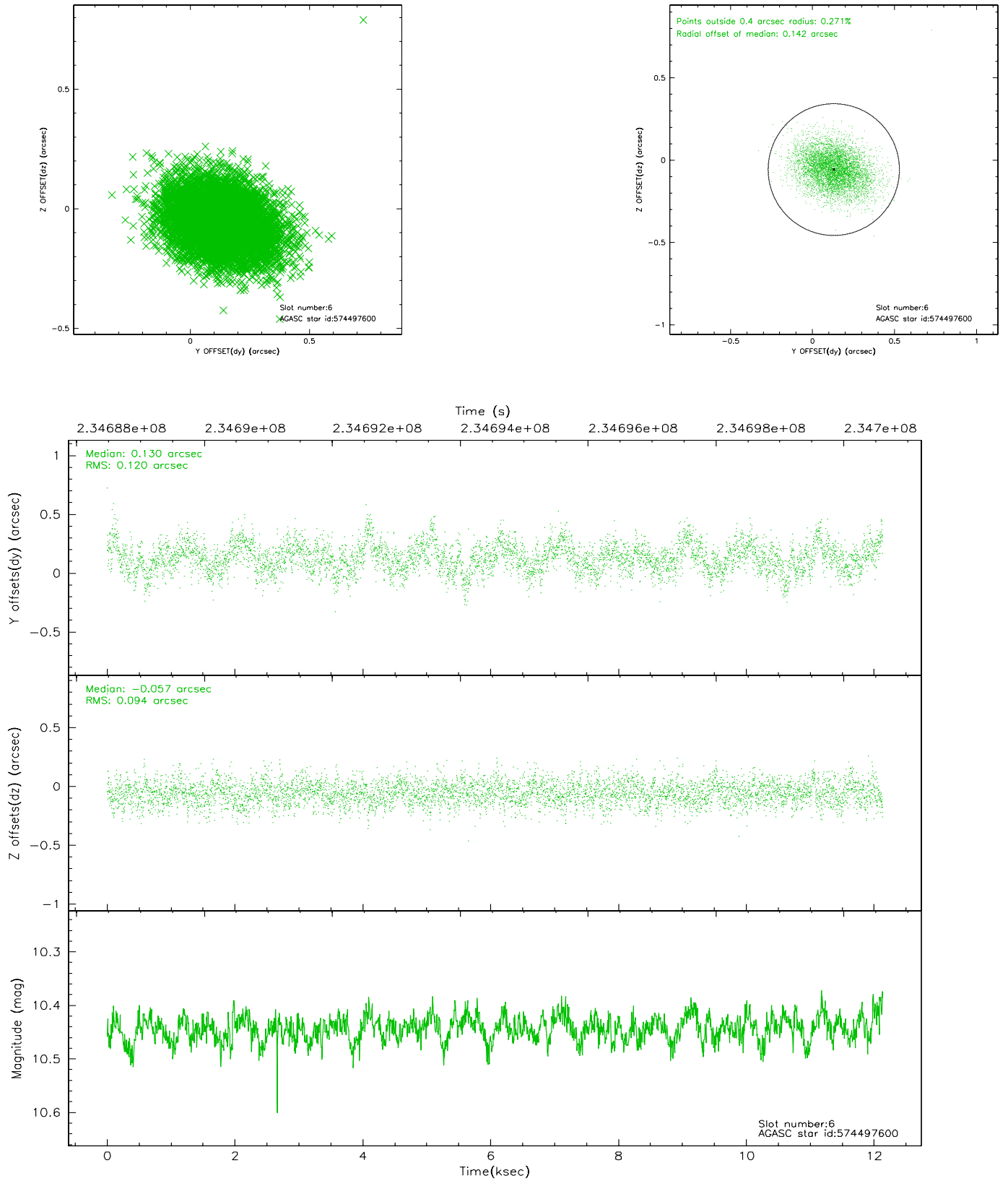
2.4.2 Slot 4



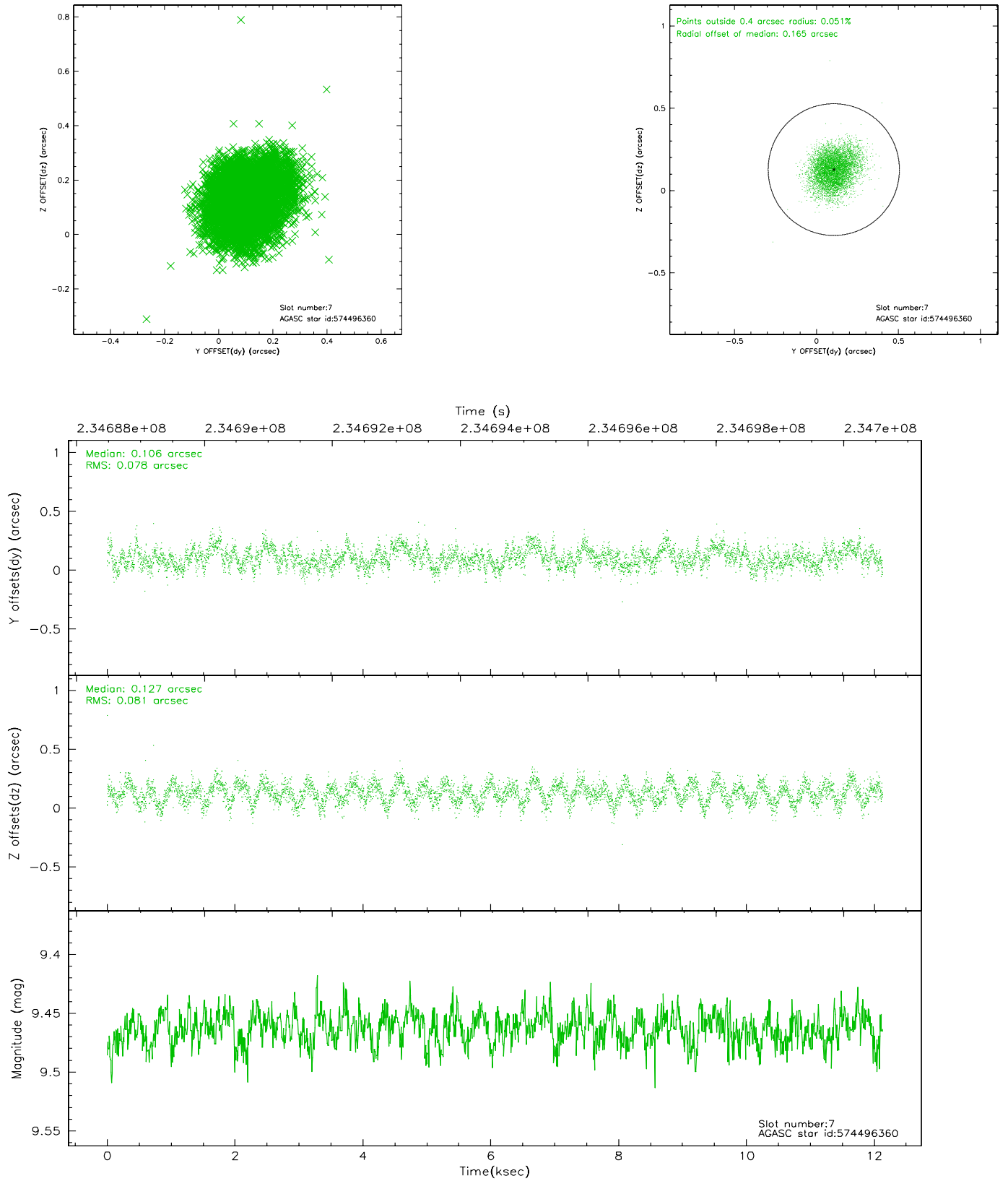
2.4.3 Slot 5



2.4.4 Slot 6

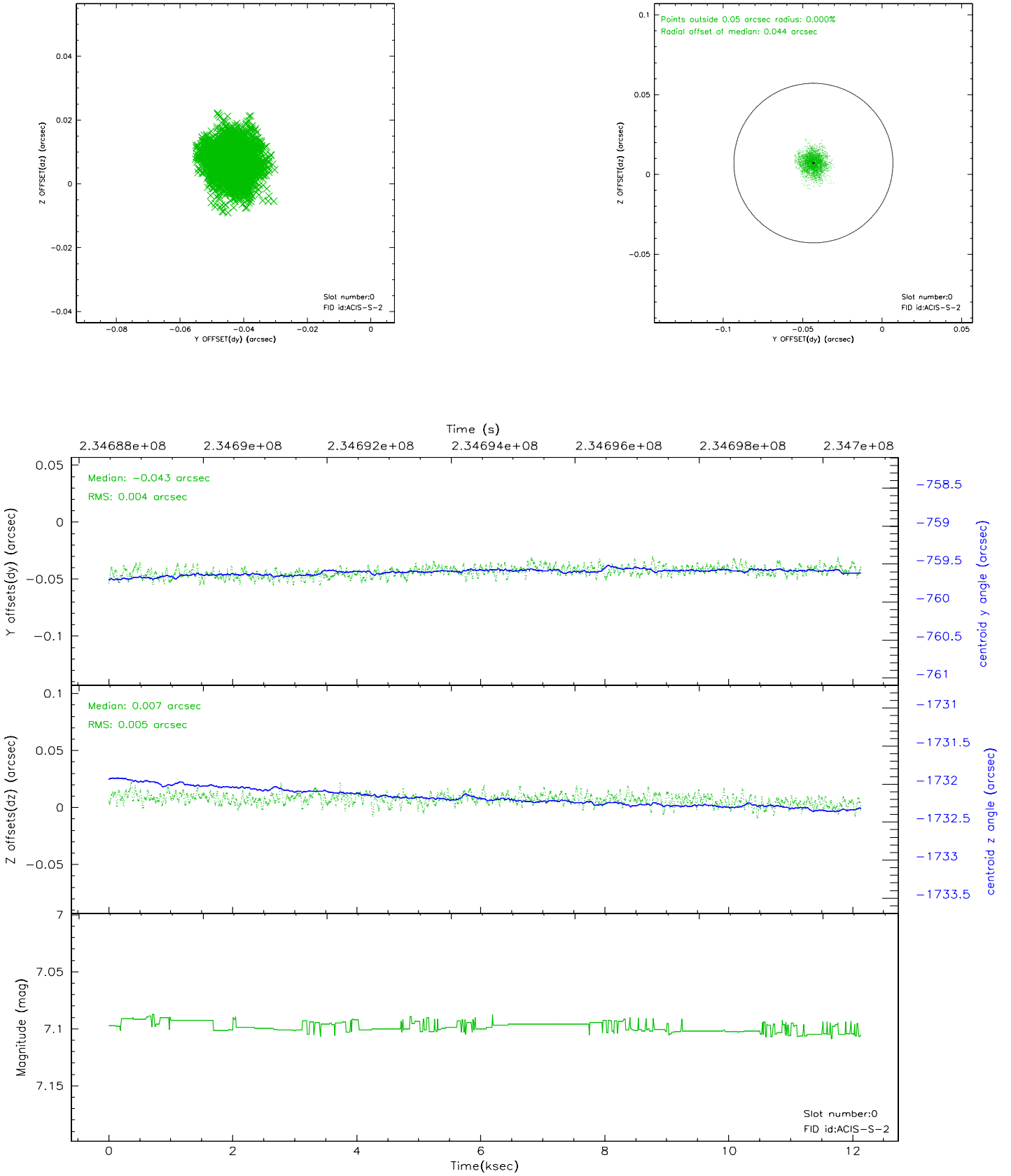


2.4.5 Slot 7

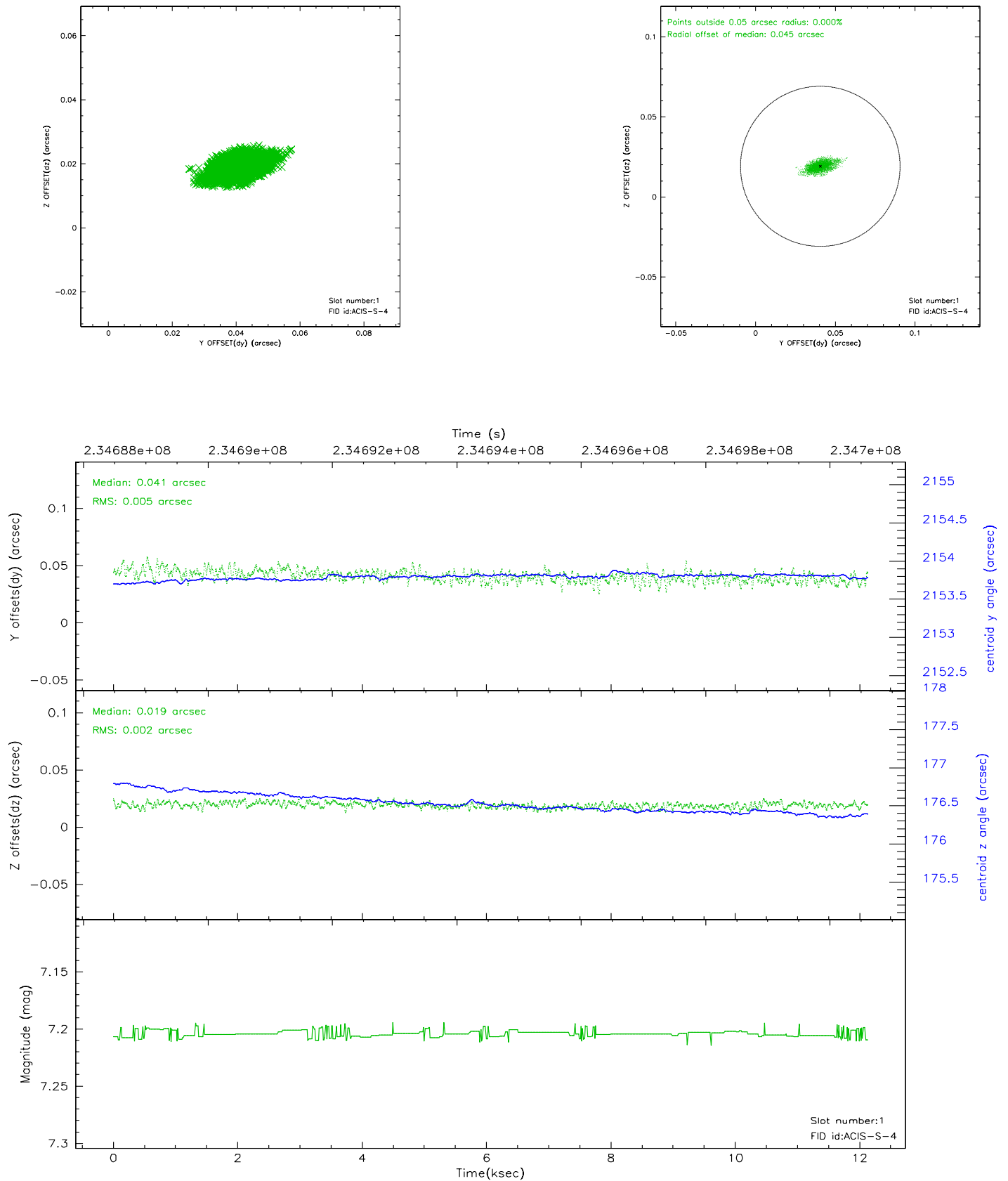


2.5 FID Slots

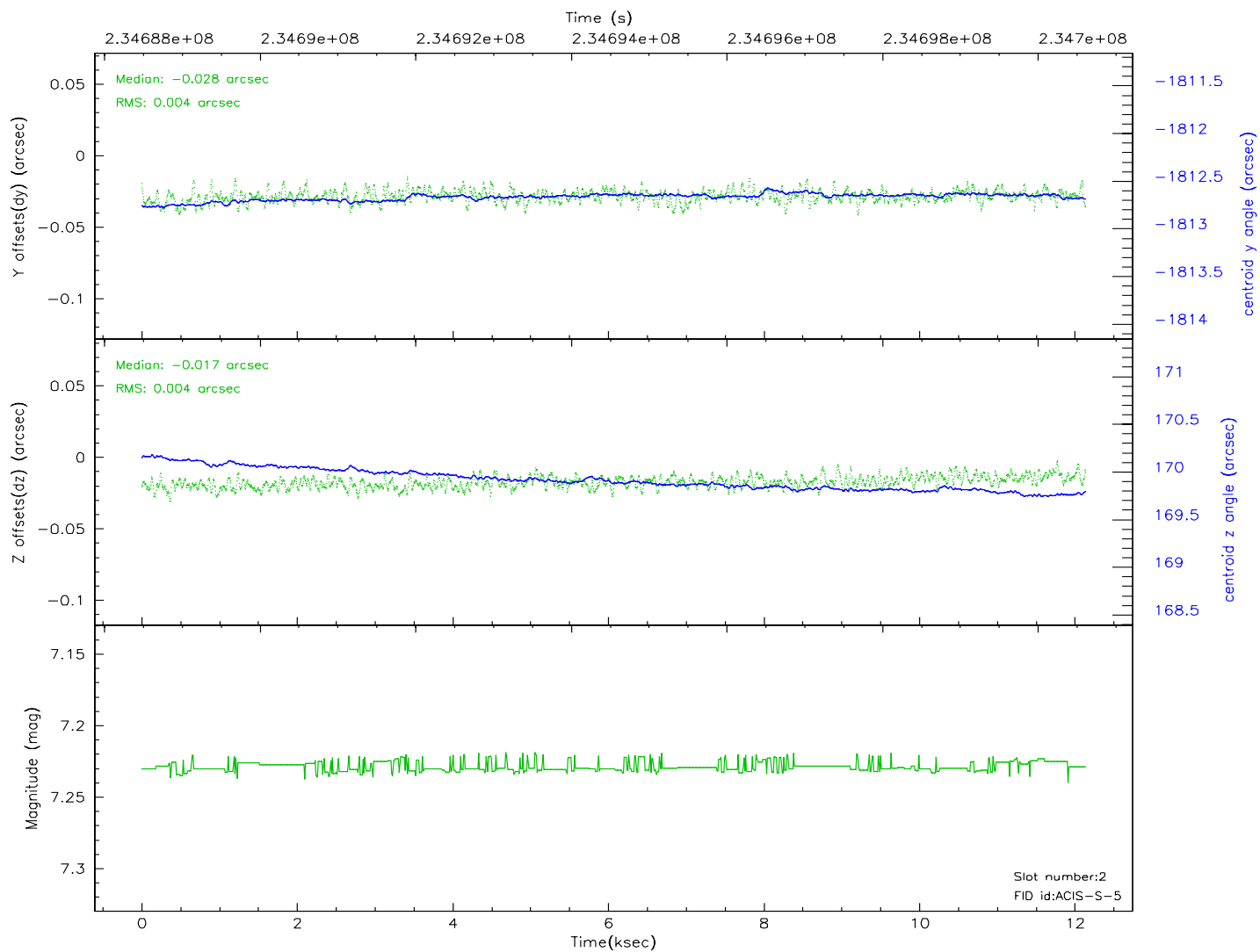
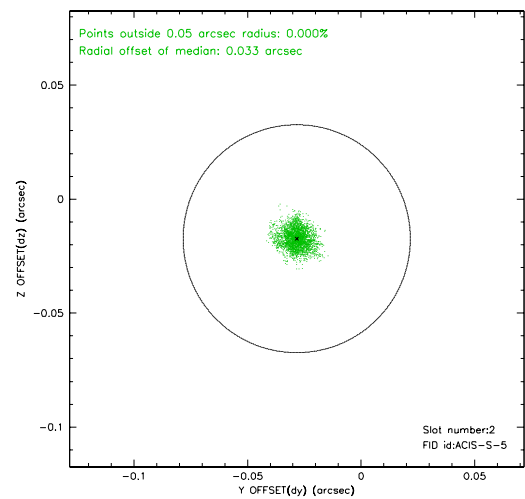
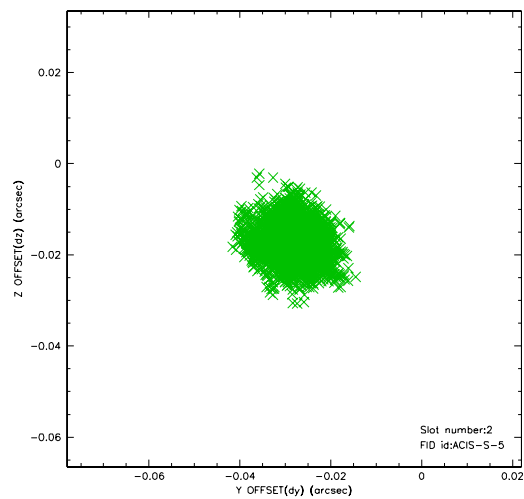
2.5.1 Slot 0



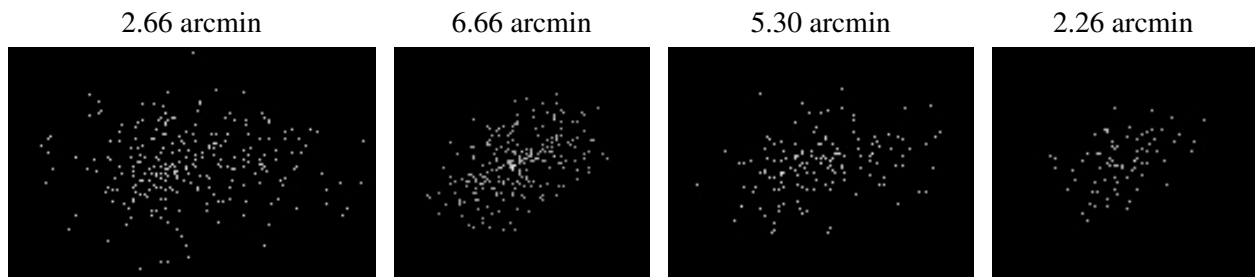
2.5.2 Slot 1



2.5.3 Slot 2



3 Point Sources



A Summary

A.1 Status

V&V Scientist	Jen Lauer
V&V Date (YYYY-MM-DD)	2006.03.10
V&V Edition	1
V&V Disposition and Status	OK
V&V Charge Time	12.12799

A.2 Comments

Roll preference met. Monitor constraint met. The first 3 ksec of the observation are at a higher ACIS focal plane temperature than the calibration limits.