

# V&V Reference Report

## L2 ASCDS Version : 7.6.7.1

Observation 5935 - L2 Version 003  
Chandra X-Ray Center

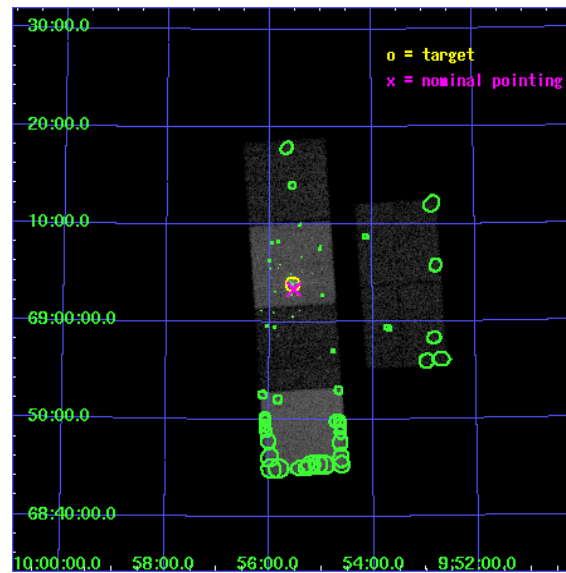
L2 Processing Date : Mar 8 2006

## Contents

<b>1</b>	<b>Front</b>	<b>2</b>
<b>2</b>	<b>OBI</b>	<b>3</b>
2.1	OBI . . . . .	3
2.1.1	Images . . . . .	3
2.1.2	Bias . . . . .	3
2.1.3	Parameters . . . . .	4
2.1.4	Events . . . . .	4
2.2	Compared Parameters . . . . .	5
2.3	Aspect . . . . .	6
2.4	Star Slots . . . . .	9
2.4.1	Slot 3 . . . . .	9
2.4.2	Slot 4 . . . . .	10
2.4.3	Slot 5 . . . . .	11
2.4.4	Slot 6 . . . . .	12
2.4.5	Slot 7 . . . . .	13
2.5	FID Slots . . . . .	14
2.5.1	Slot 0 . . . . .	14
2.5.2	Slot 1 . . . . .	15
2.5.3	Slot 2 . . . . .	16
<b>3</b>	<b>Point Sources</b>	<b>17</b>
<b>A</b>	<b>Summary</b>	<b>18</b>
A.1	Status . . . . .	18
A.2	Comments . . . . .	18

# 1 Front

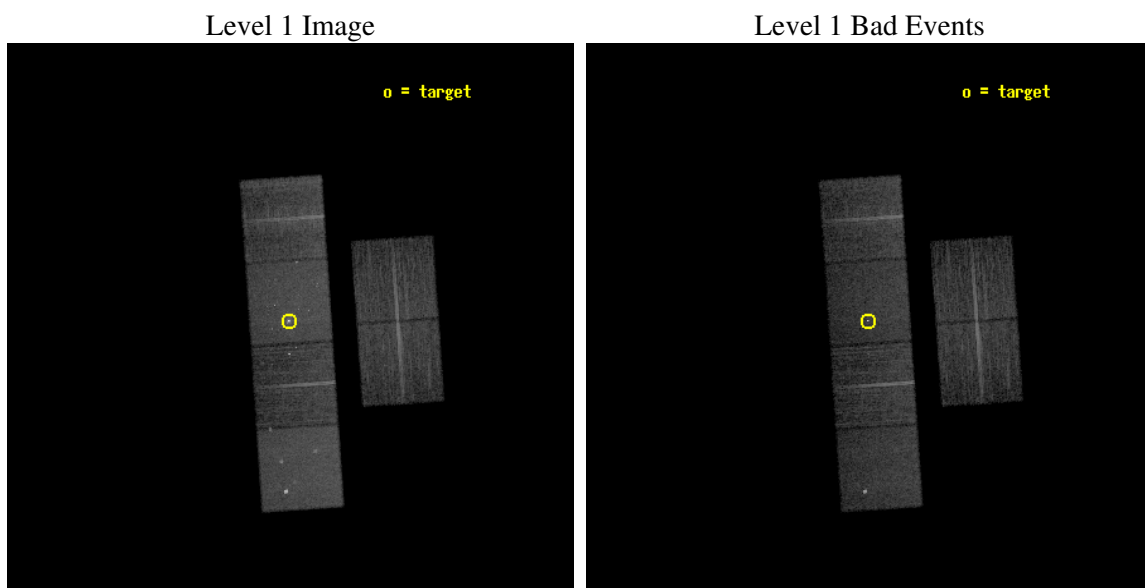
seq_num	600454
obs_id	5935
title	An Unprecedented View of a Galaxy's Dynamic X-ray Source Population
observer	Dr. David Pooley
object	M81
dtcycle	0
cycle	P
ra_targ	148.888333
dec_targ	69.065306
ra_nom	148.88172623167
dec_nom	69.055951213634
roll_nom	266.09219872282
revision	3
ontime	11119.999958575
livetime	10979.191823439
ontime2	11119.999958575
ontime3	11119.999958575
ontime5	11119.999958575
ontime6	11119.999958575
ontime7	11119.999958575
ontime8	11119.999958575
l2events	140272



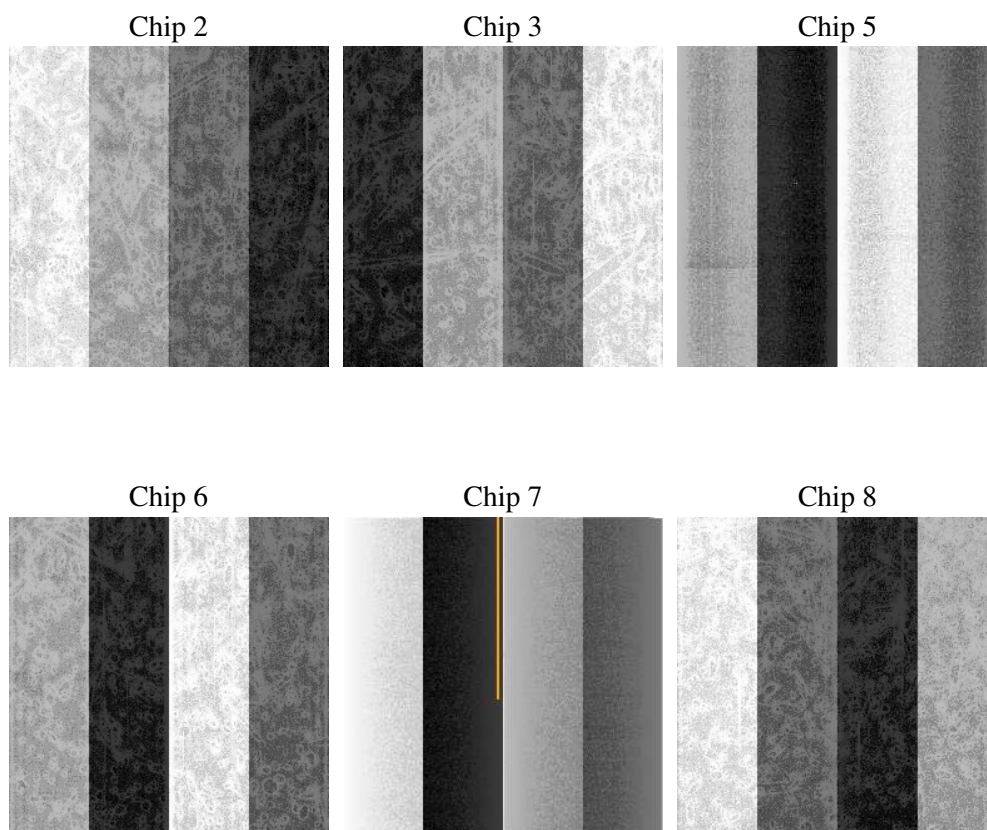
## 2 OBI

### 2.1 OBI

#### 2.1.1 Images



#### 2.1.2 Bias



### 2.1.3 Parameters

obi_num	0
ascdsver	7.6.7.1
caldbver	3.2.1
date	2006-03-08T10:27:28
revision	3

sched_exp_time	11000.114000
ontime	12918.632659048
ontime2	12918.632659048
ontime3	12918.632659048
ontime5	12918.632659048
ontime6	12918.632659048
ontime7	12918.632659048
ontime8	12918.632659048
l1events	715468

### 2.1.4 Events

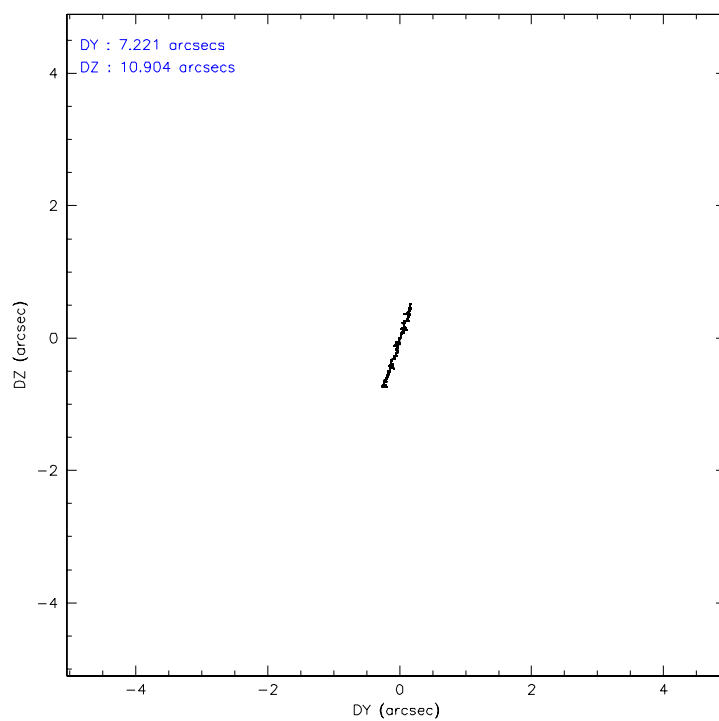
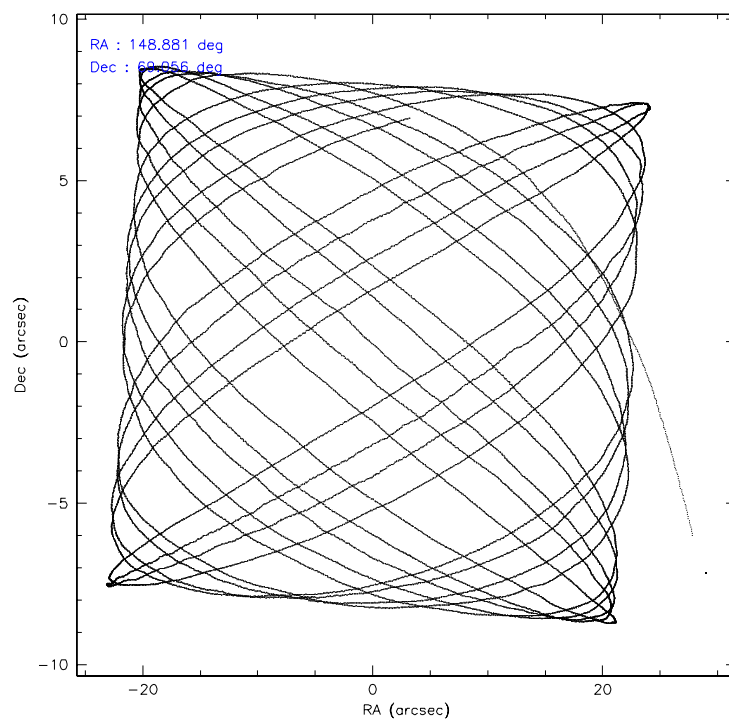
	ccd 2	ccd 3	ccd 5	ccd 6	ccd 7	ccd 8
level 1 events	99455	97633	149965	101244	143756	123415
rejected events	89422	87830	93294	89135	92834	100547
rejected %	89%	89%	62%	88%	64%	81%

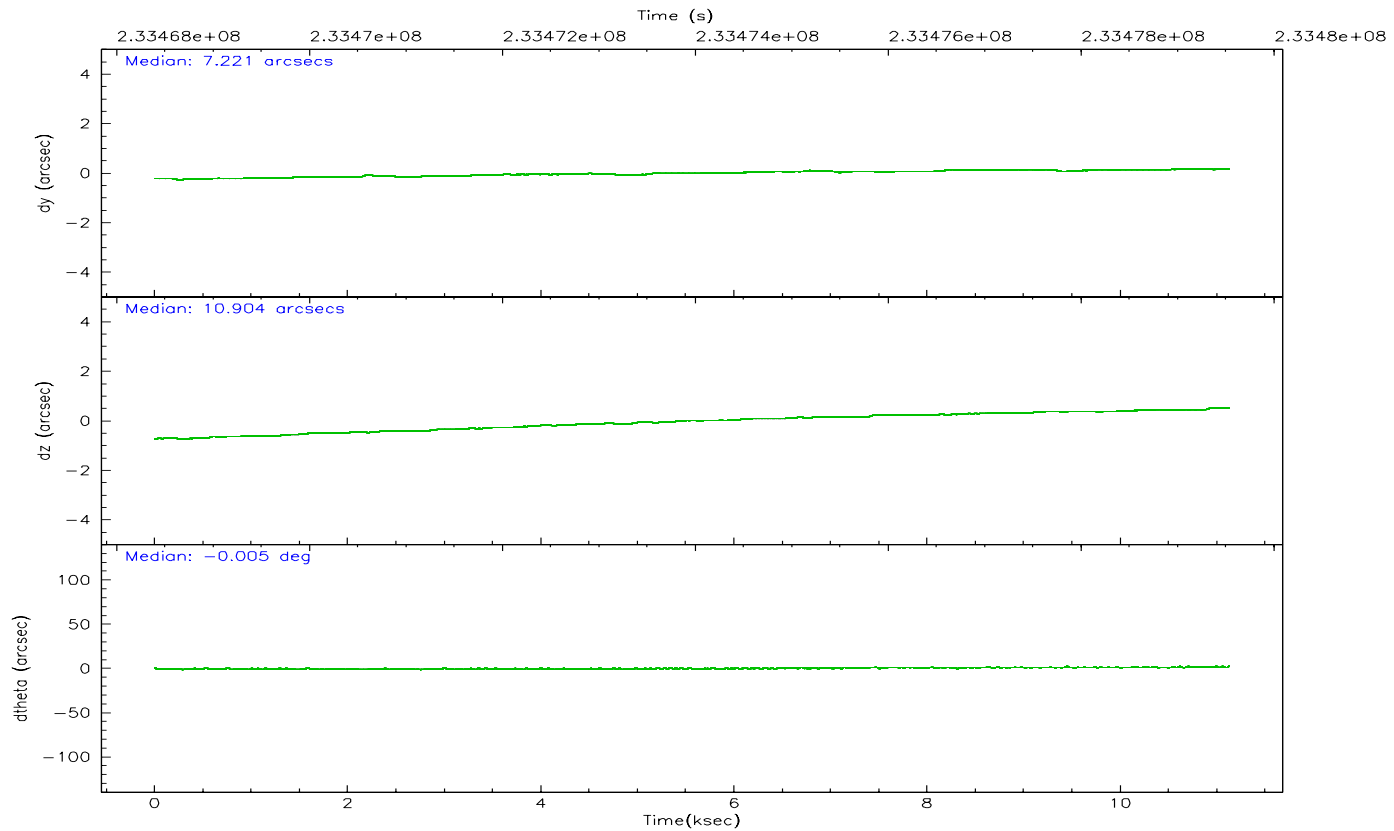
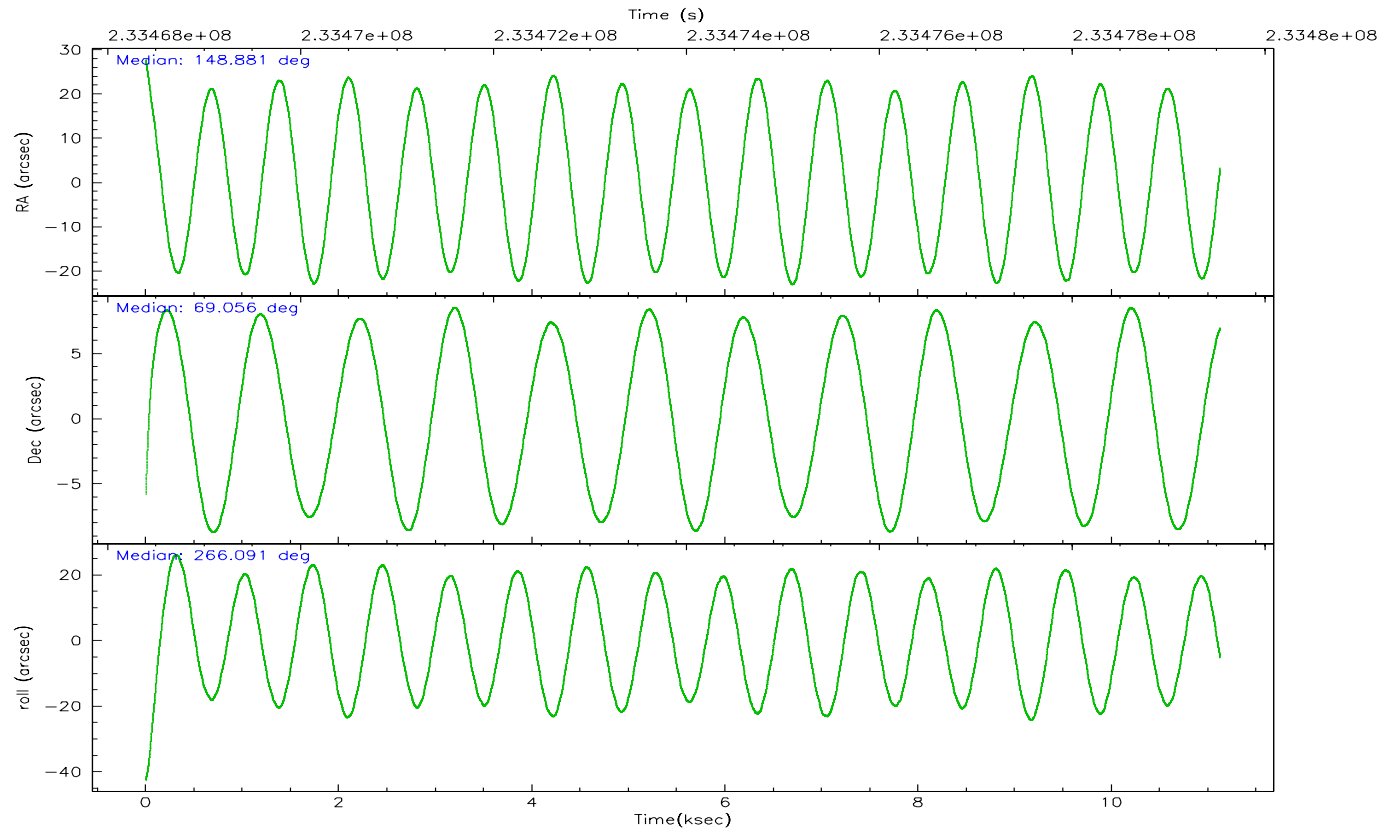
	ccd 2	ccd 3	ccd 5	ccd 6	ccd 7	ccd 8
grade 0 events	5148	4981	5243	6443	4716	8525
	5%	5%	3%	6%	3%	6%
grade 1 events	52	48	2141	92	145	79
	0%	0%	1%	0%	0%	0%
grade 2 events	2376	2166	20640	2635	14681	5894
	2%	2%	13%	2%	10%	4%
grade 3 events	1061	1118	1499	1170	3247	3028
	1%	1%	0%	1%	2%	2%
grade 4 events	1086	1082	1531	1134	3146	2696
	1%	1%	1%	1%	2%	2%
grade 5 events	3859	4364	7136	4596	9232	6003
	3%	4%	4%	4%	6%	4%
grade 6 events	1950	2012	37099	2427	32311	6822
	1%	2%	24%	2%	22%	5%
grade 7 events	83923	81862	74676	82747	76278	90368
	84%	83%	49%	81%	53%	73%

## 2.2 Compared Parameters

Parameter	Planned	Actual	Parameter	Planned	Actual
Instrument	ACIS	ACIS	Obspar format version number	6	6
Detector	ACIS-235678	ACIS-235678	Obspar file type	PREDICTED	ACTUAL
Grating	NONE	NONE	Obspar update status	NONE	UPDATED
Data mode	FAINT	FAINT	On-chip summing requested	N	N
Observation mode	POINTING	POINTING	Subarray requested	NONE	NONE
Pointing RA	148.847311	148.8817262316747	Alternating exposures requested	N	N
Pointing Dec	69.080231	69.05595121363353	Primary exposure time	0.000000	3.2
Pointing Roll	265.967731	266.0921987228239			
SIM focus pos (mm)	-0.684267	-0.6828225247311905			
SIM defocus (mm)	0	0.001444936568705701			
SIM translation stage pos (mm)	-190.132523	-190.1400660498719			
SIM translation stage offset (mm)	0	0.00754346686406393			
Observation start time	233468530.184000	233466445.95561			
Observation start date	2005-05-26T04:21:06	2005-05-26T03:47:25			
Observation end time	233479530.184000	233479746.35622			
Observation end date	2005-05-26T07:24:26	2005-05-26T07:29:06			
Read mode	TIMED	TIMED			

## 2.3 Aspect





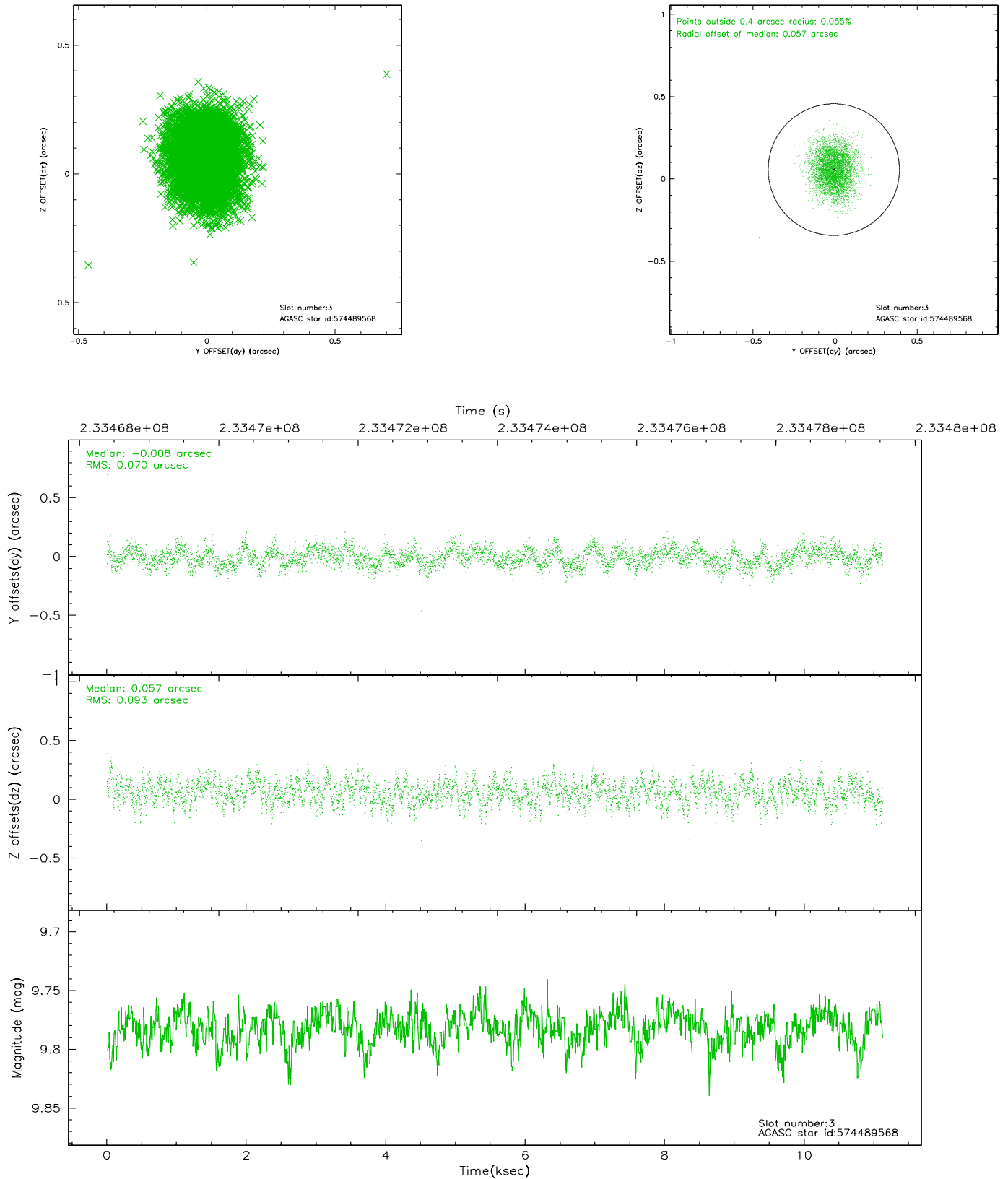
### Slot Statistics

slot	status	id	mag	n_pts	med_dy	med_dz	dr1	dr2	ra	dec	mean_y	mean_z
0	FID	ACIS-S-2	7.10	2714	-0.039	-0.000	0.009	0.015	0.000000	0.000000	-759.97	-1732.13
1	FID	ACIS-S-4	7.20	2714	0.052	0.019	0.007	0.011	0.000000	0.000000	2153.15	175.94
2	FID	ACIS-S-5	7.23	2714	-0.045	-0.010	0.008	0.014	0.000000	0.000000	-1812.26	170.04
3	GUIDE	574489568	9.78	5423	-0.008	0.057	0.123	0.198	147.223974	69.438157	-1167.70	-2139.24
4	GUIDE	574490960	9.74	5423	0.002	-0.005	0.126	0.196	148.185918	69.658768	-2023.41	-972.47
5	GUIDE	574491280	9.35	5424	-0.048	0.086	0.104	0.167	148.611567	69.450135	-1307.36	-391.12
6	GUIDE	574498696	9.05	5427	0.289	-0.070	0.095	0.158	146.881317	68.486979	2272.04	-2441.10
7	GUIDE	574491872	9.25	5424	-0.224	-0.069	0.100	0.159	147.207613	69.765453	-2342.04	-2211.98

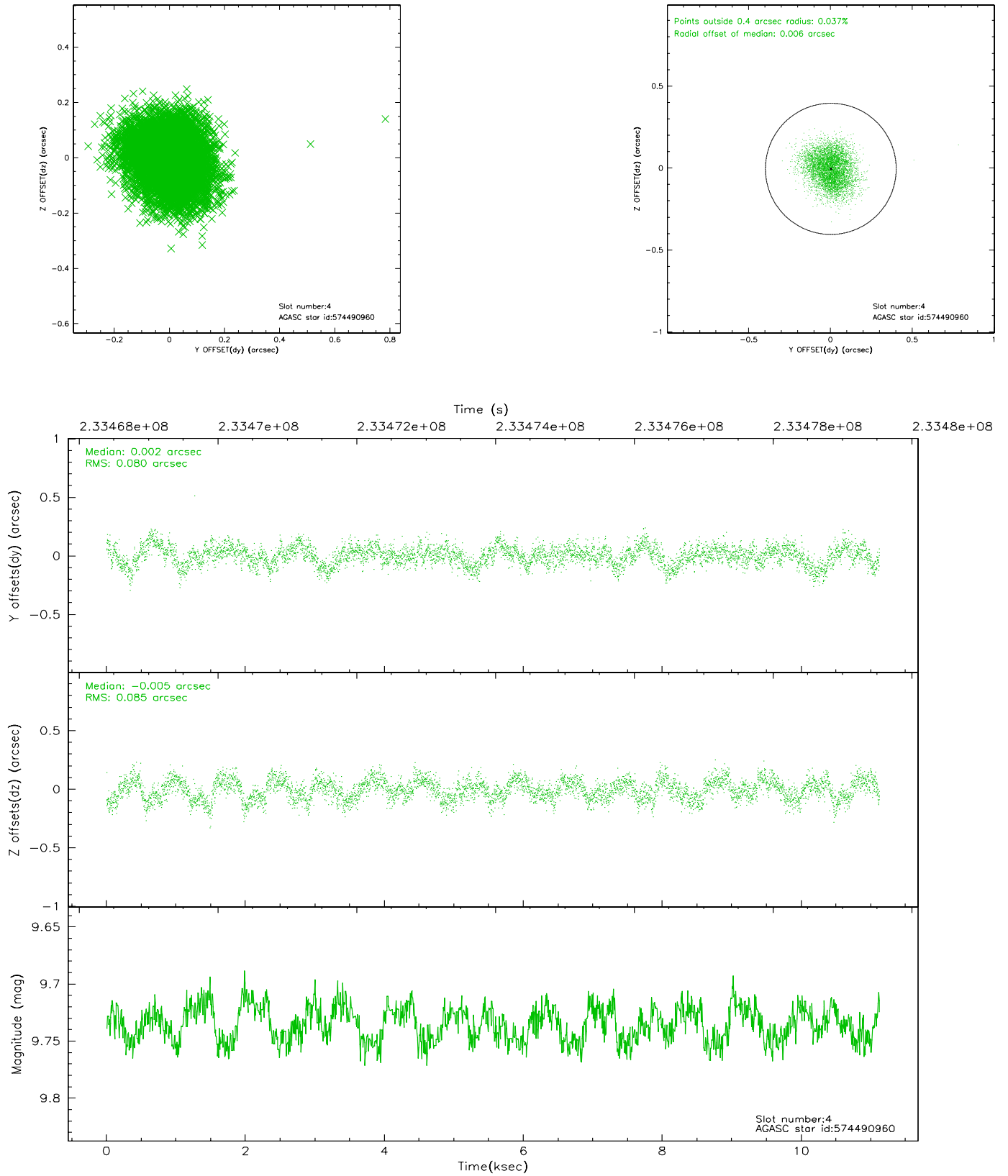


## 2.4 Star Slots

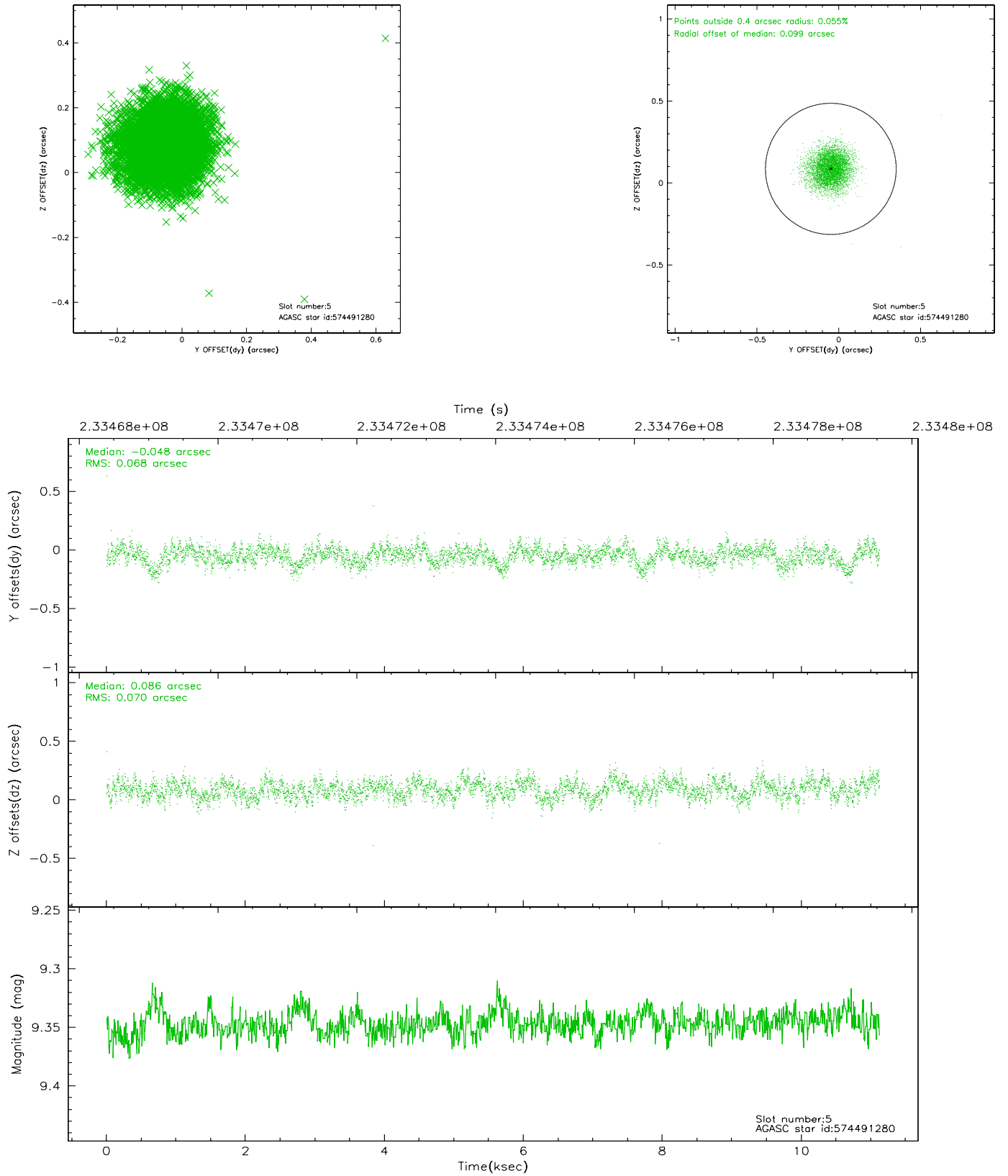
### 2.4.1 Slot 3



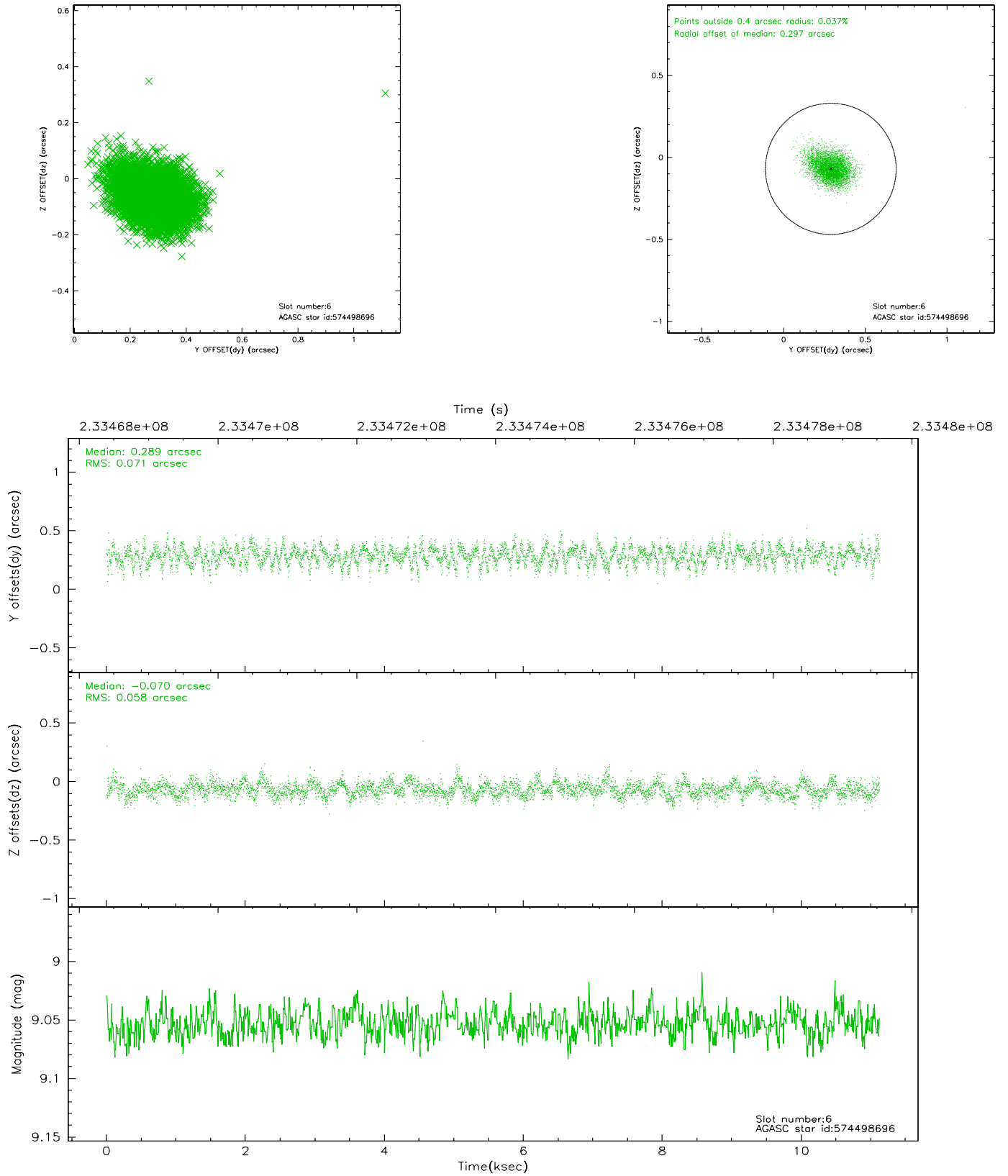
## 2.4.2 Slot 4



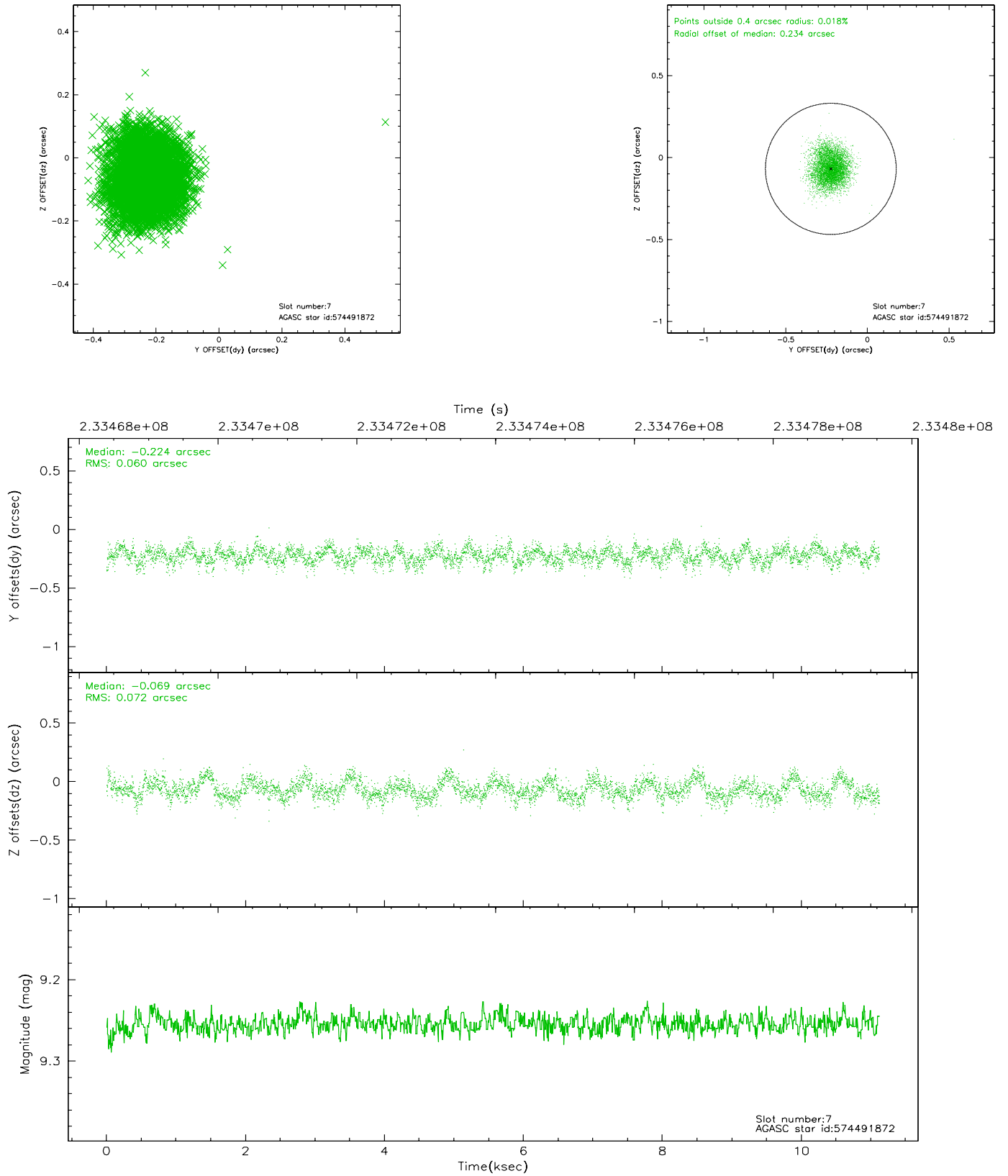
### 2.4.3 Slot 5



## 2.4.4 Slot 6

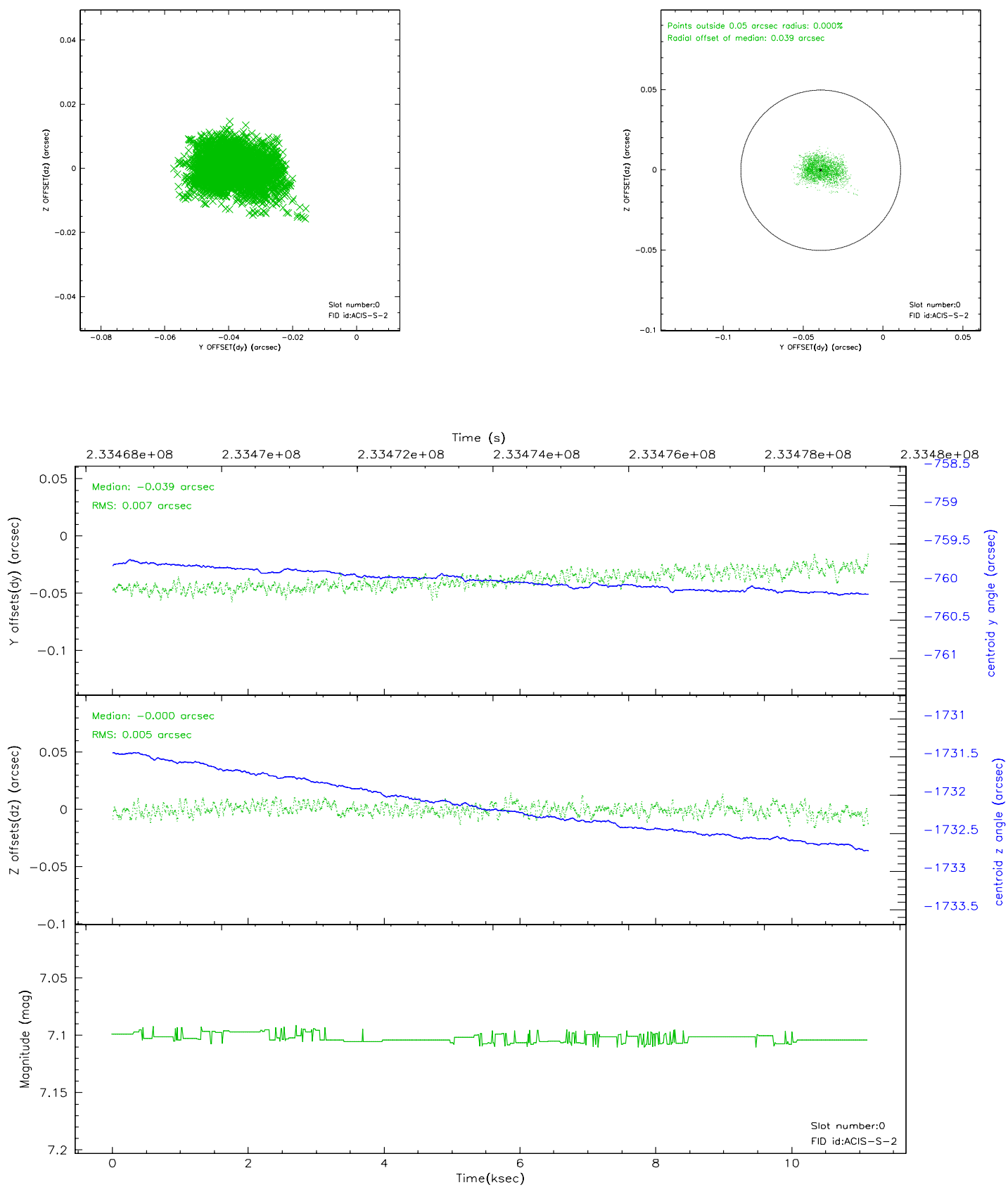


## 2.4.5 Slot 7

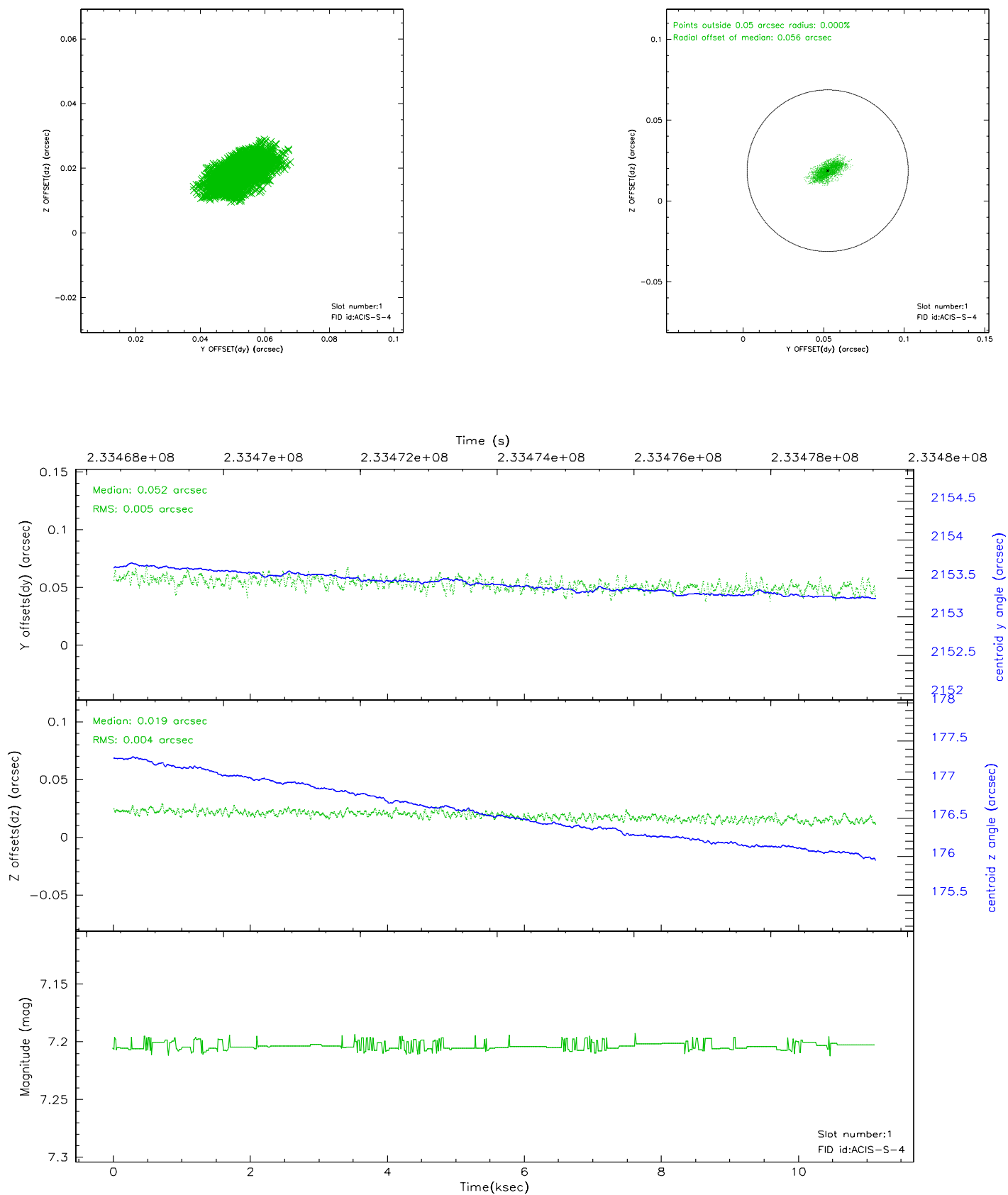


## 2.5 FID Slots

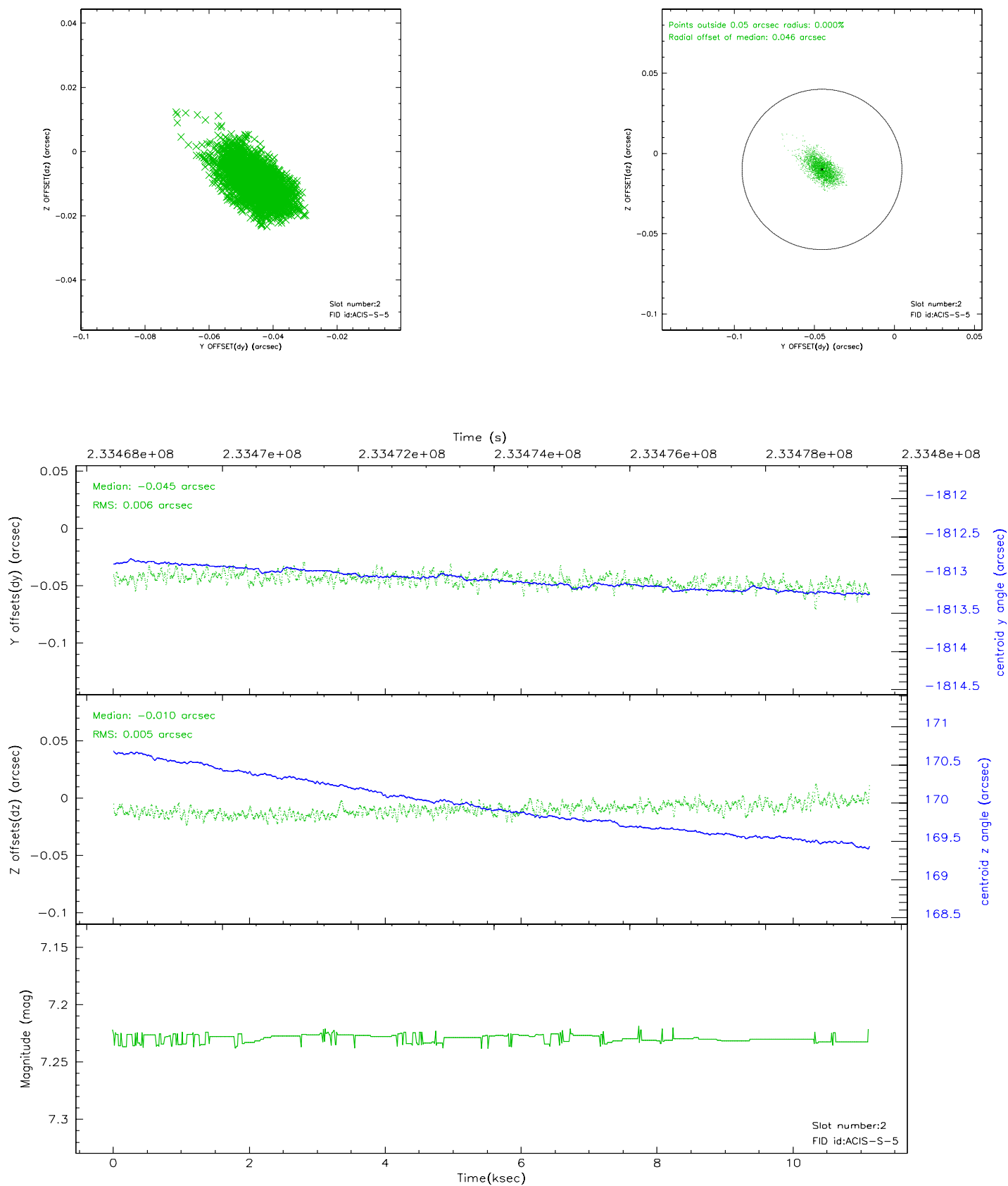
### 2.5.1 Slot 0



2.5.2 Slot 1

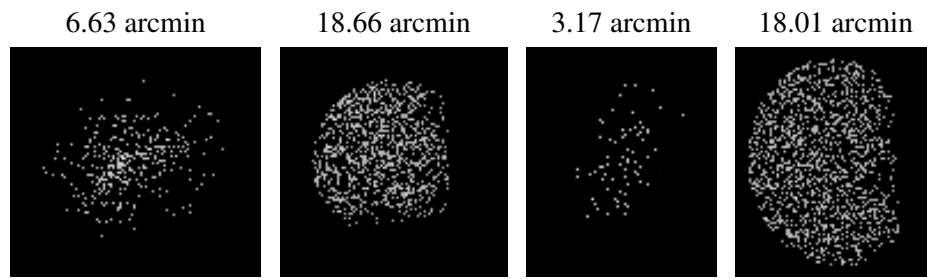


### 2.5.3 Slot 2





### 3 Point Sources



## A Summary

### A.1 Status

V&V Scientist	Jen Lauer
V&V Date (YYYY-MM-DD)	2006.03.08
V&V Edition	1
V&V Disposition and Status	OK
V&V Charge Time	11.11999

### A.2 Comments

Roll preference not met.