

# V&V Reference Report

## L2 ASCDS Version : 7.6.7

Observation 6251 - L2 Version 002  
Chandra X-Ray Center

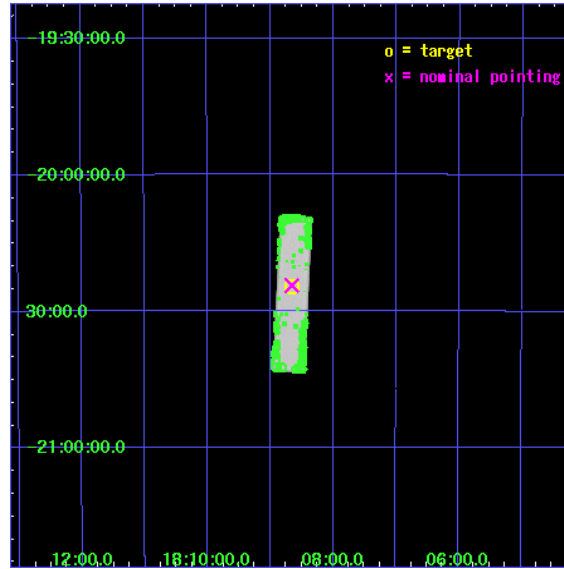
L2 Processing Date: Mar 2 2006

## Contents

<b>1</b>	<b>Front</b>	<b>2</b>
<b>2</b>	<b>OBI</b>	<b>3</b>
2.1	OBI . . . . .	3
2.1.1	Images . . . . .	3
2.1.2	Parameters . . . . .	4
2.1.3	Events . . . . .	4
2.2	Compared Parameters . . . . .	5
2.3	Aspect . . . . .	6
2.4	Star Slots . . . . .	9
2.4.1	Slot 3 . . . . .	9
2.4.2	Slot 4 . . . . .	10
2.4.3	Slot 5 . . . . .	11
2.4.4	Slot 6 . . . . .	12
2.4.5	Slot 7 . . . . .	13
2.5	FID Slots . . . . .	14
2.5.1	Slot 0 . . . . .	14
2.5.2	Slot 1 . . . . .	15
2.5.3	Slot 2 . . . . .	16
<b>3</b>	<b>Point Sources</b>	<b>17</b>
<b>A</b>	<b>Summary</b>	<b>18</b>
A.1	Status . . . . .	18
A.2	Comments . . . . .	18

# 1 Front

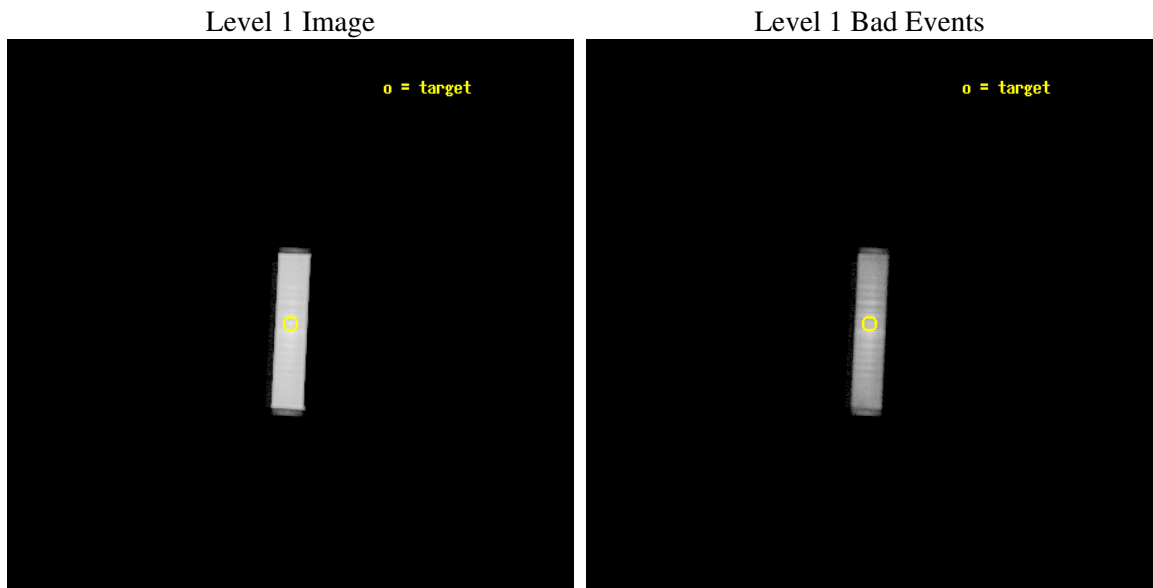
seq_num	500599
obs_id	6251
title	Resolving an X-ray Jet from the Magnetar SGR 1806-20
observer	Dr Chryssa Kouveliotou
object	SGR 1806-20
ra_targ	272.16375
dec_targ	-20.411056
ra_nom	272.1636719876
dec_nom	-20.406404994794
roll_nom	92.675530757656
revision	2
ontime	27149.176234871
livetime	27047.791514586
l2events	944503



## 2 OBI

### 2.1 OBI

#### 2.1.1 Images



### 2.1.2 Parameters

obi_num	1
ascdsver	7.6.7
caldbver	3.2.1
date	2006-03-02T05:34:12
revision	2

sched_exp_time	27000.000000
ontime	27149.176234871
l1events	1605557

### 2.1.3 Events

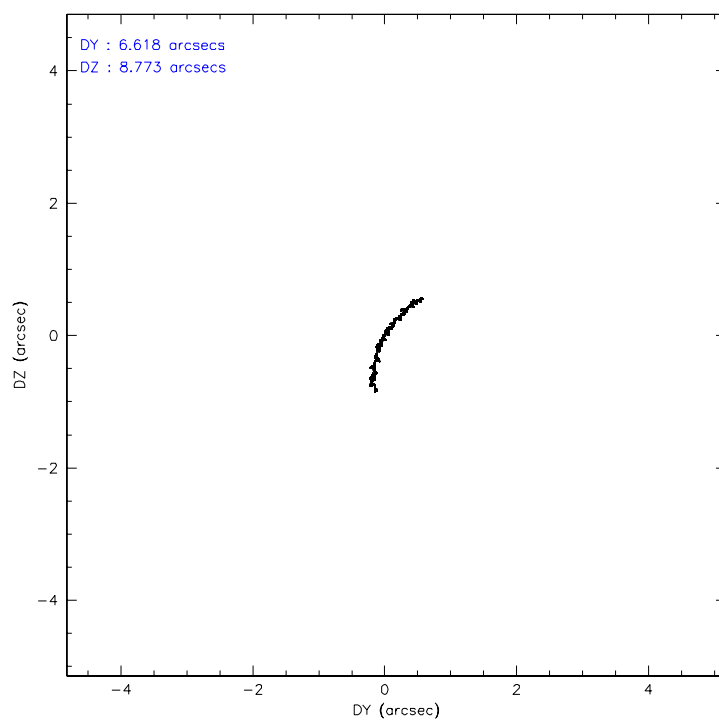
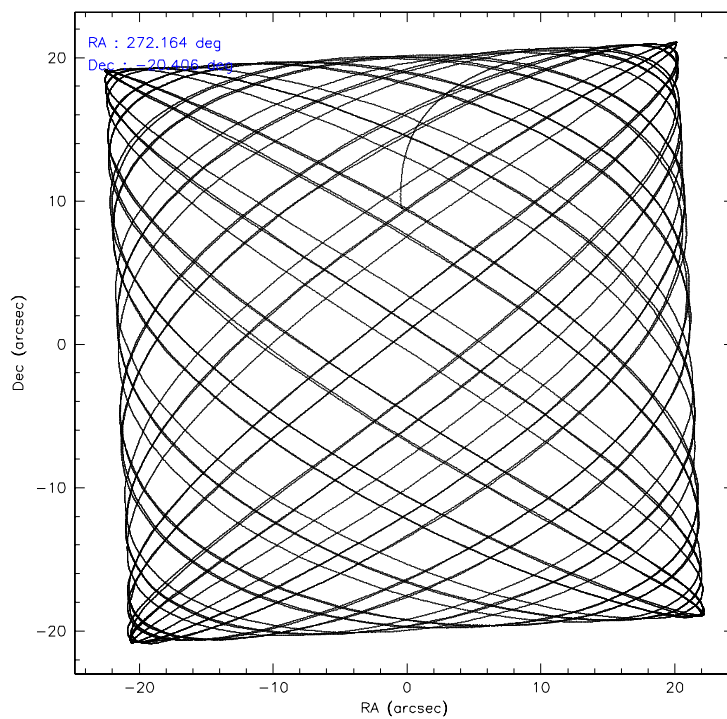
#### Level 1 Events

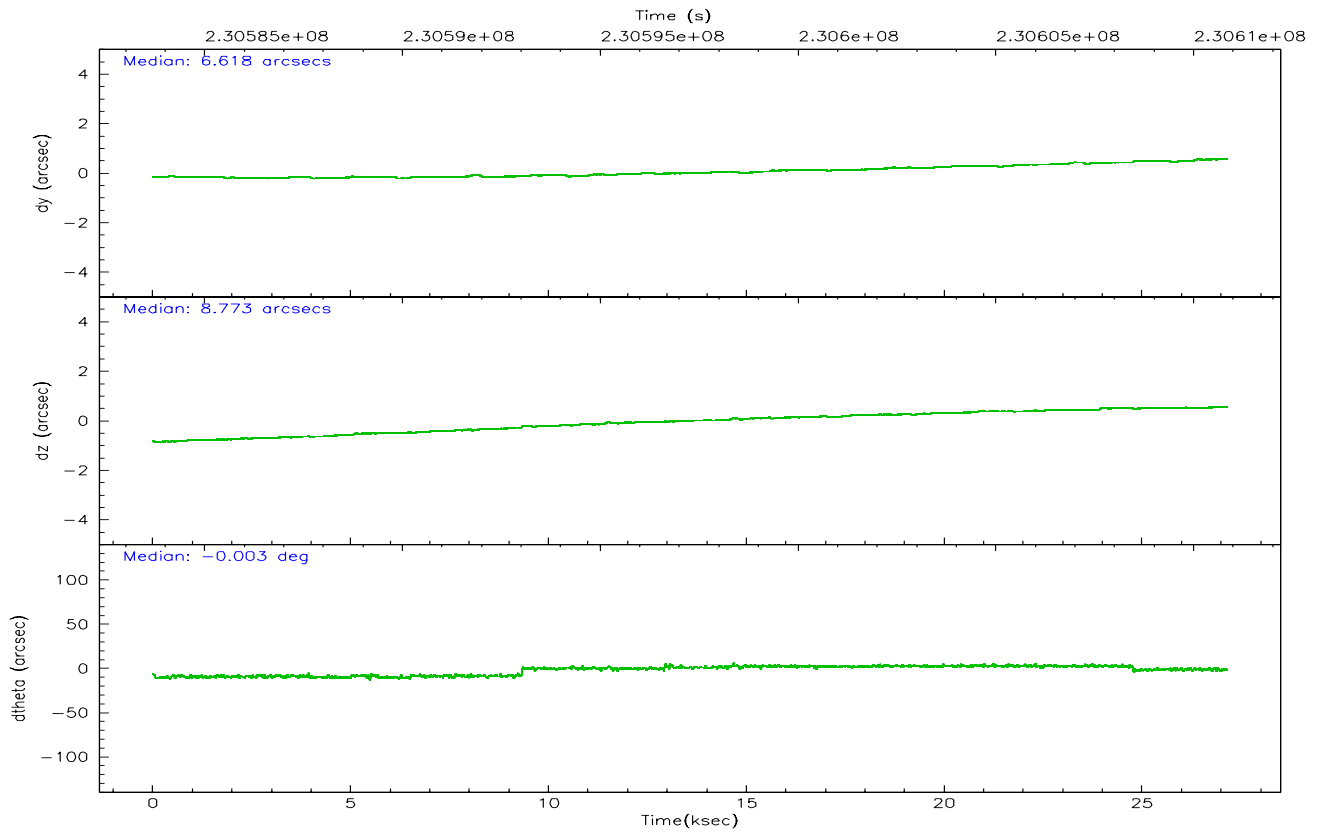
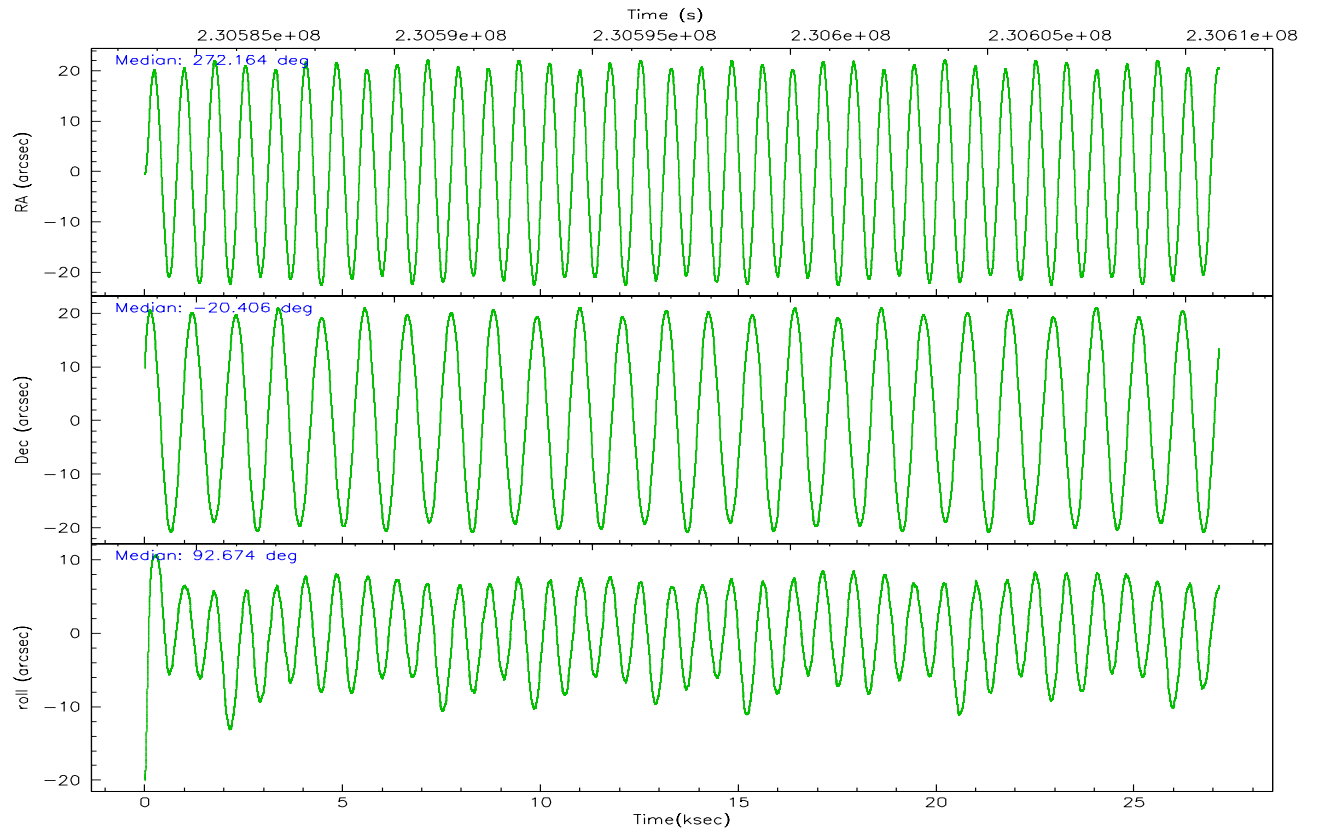
	<b>segment 1</b>	<b>segment 2</b>	<b>segment 3</b>
level 1 events	2150	1603404	3
rejected events	2045	578477	3
rejected %	95%	36%	100%

## 2.2 Compared Parameters

Parameter	Planned	Actual	Parameter	Planned	Actual
Instrument	HRC	HRC	Obspar format version number	6	6
Detector	HRC-S	HRC-S	Obspar file type	PREDICTED	ACTUAL
Grating	NONE	NONE	Obspar update status	NONE	UPDATED
Data mode	OBSERVING	OBSERVING			
Observation mode	POINTING	POINTING			
Pointing RA	272.181383	272.1636719876045			
Pointing Dec	-20.429658	-20.40640499479359			
Pointing Roll	92.614380	92.67553075765606			
SIM focus pos (mm)	-1.429586	-1.428180813131781			
SIM defocus (mm)	0.1037507710433287	0.1051558262725154			
SIM translation stage pos (mm)	250.455976	250.466033080201			
SIM translation stage offset (mm)	0	-0.01005468664627074			
Observation start time	230583852.184000	230581771.92425			
Observation start date	2005-04-22T19:03:08	2005-04-22T18:29:31			
Observation end time	230610852.184000	230611567.13811			
Observation end date	2005-04-23T02:33:08	2005-04-23T02:46:07			

## 2.3 Aspect





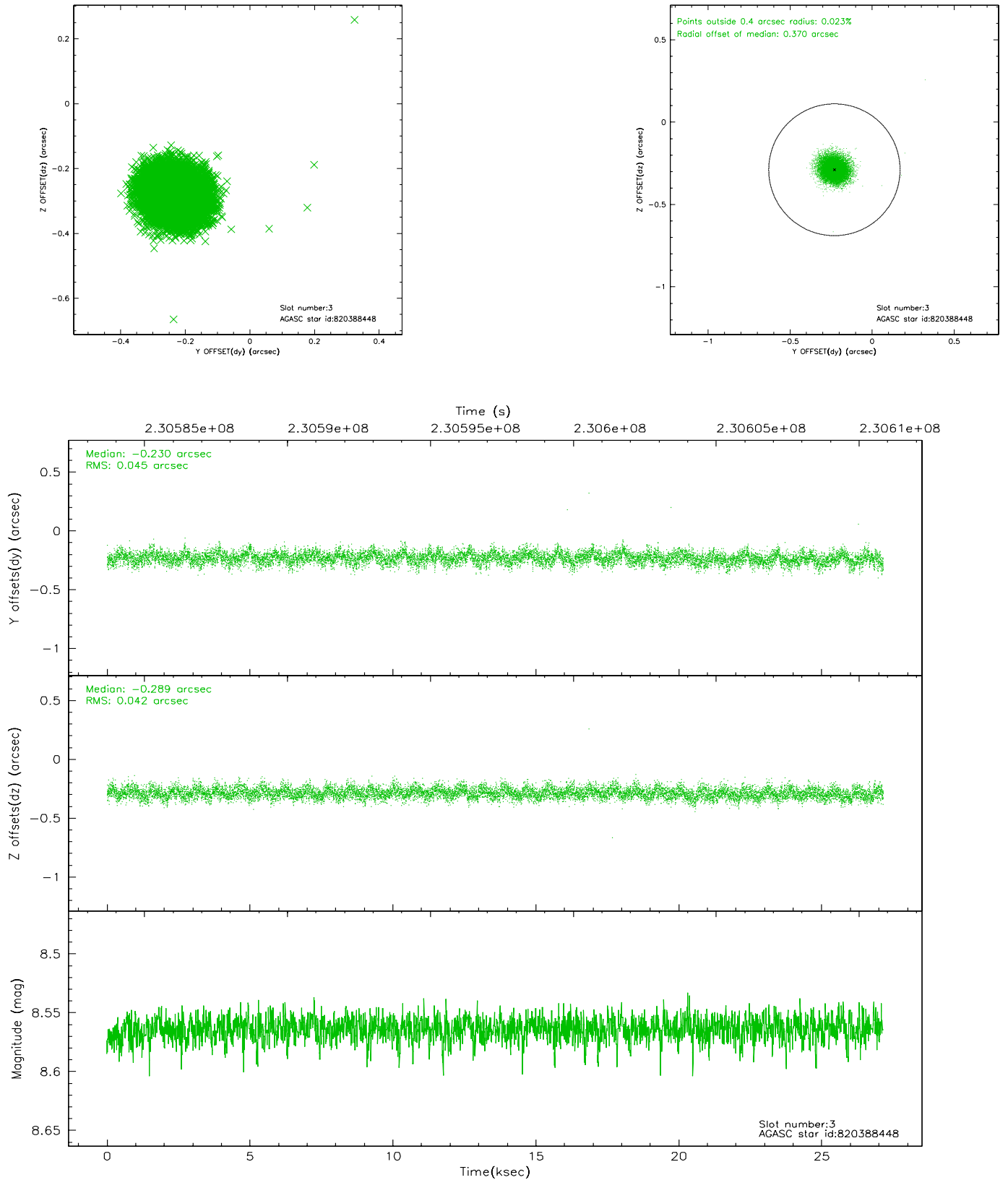
### Slot Statistics

slot	status	id	mag	n_pts	med_dy	med_dz	dr1	dr2	ra	dec	mean_y	mean_z
0	FID	HRC-S-1	7.00	6622	0.098	-0.161	0.025	0.039	0.000000	0.000000	-1160.86	-457.37
1	FID	HRC-S-3	7.02	6621	0.088	-0.049	0.037	0.056	0.000000	0.000000	-1163.76	572.20
2	FID	HRC-S-4	6.97	6620	0.197	-0.086	0.013	0.018	0.000000	0.000000	1237.32	574.90
3	GUIDE	820388448	8.56	13240	-0.230	-0.289	0.065	0.107	271.630569	-19.882892	2048.12	1773.16
4	GUIDE	820399496	8.34	13242	-0.055	-0.145	0.079	0.122	271.495152	-19.953854	1812.41	2242.08
5	GUIDE	822617304	8.98	13243	0.168	0.233	0.084	0.136	272.421826	-20.831304	-1481.52	-741.69
6	GUIDE	822098736	8.51	13241	-0.002	0.260	0.075	0.123	272.269355	-19.875225	1980.20	-388.16
7	GUIDE	822614704	7.86	13239	0.125	-0.058	0.068	0.107	272.076243	-20.843493	-1471.89	421.36

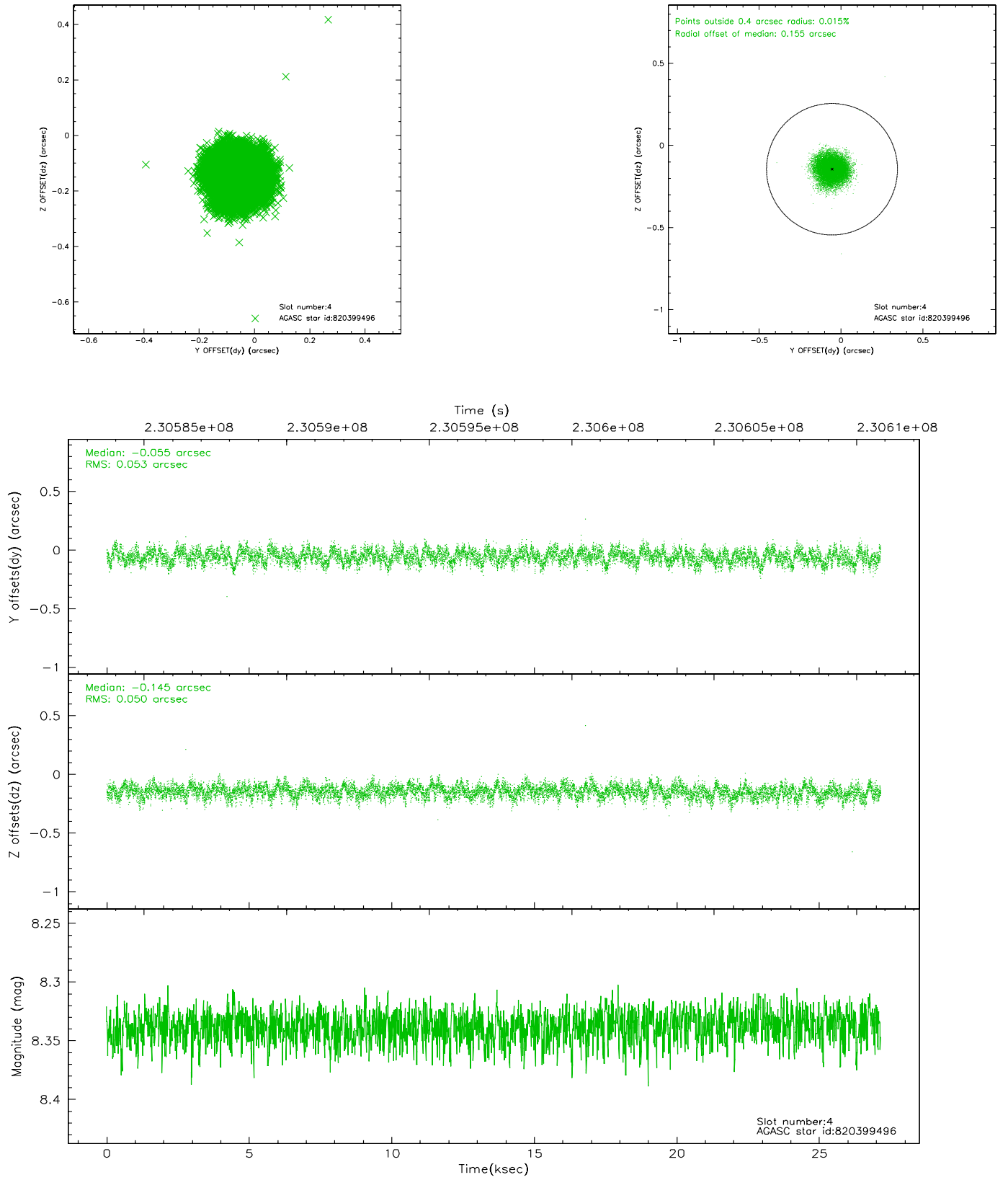


## 2.4 Star Slots

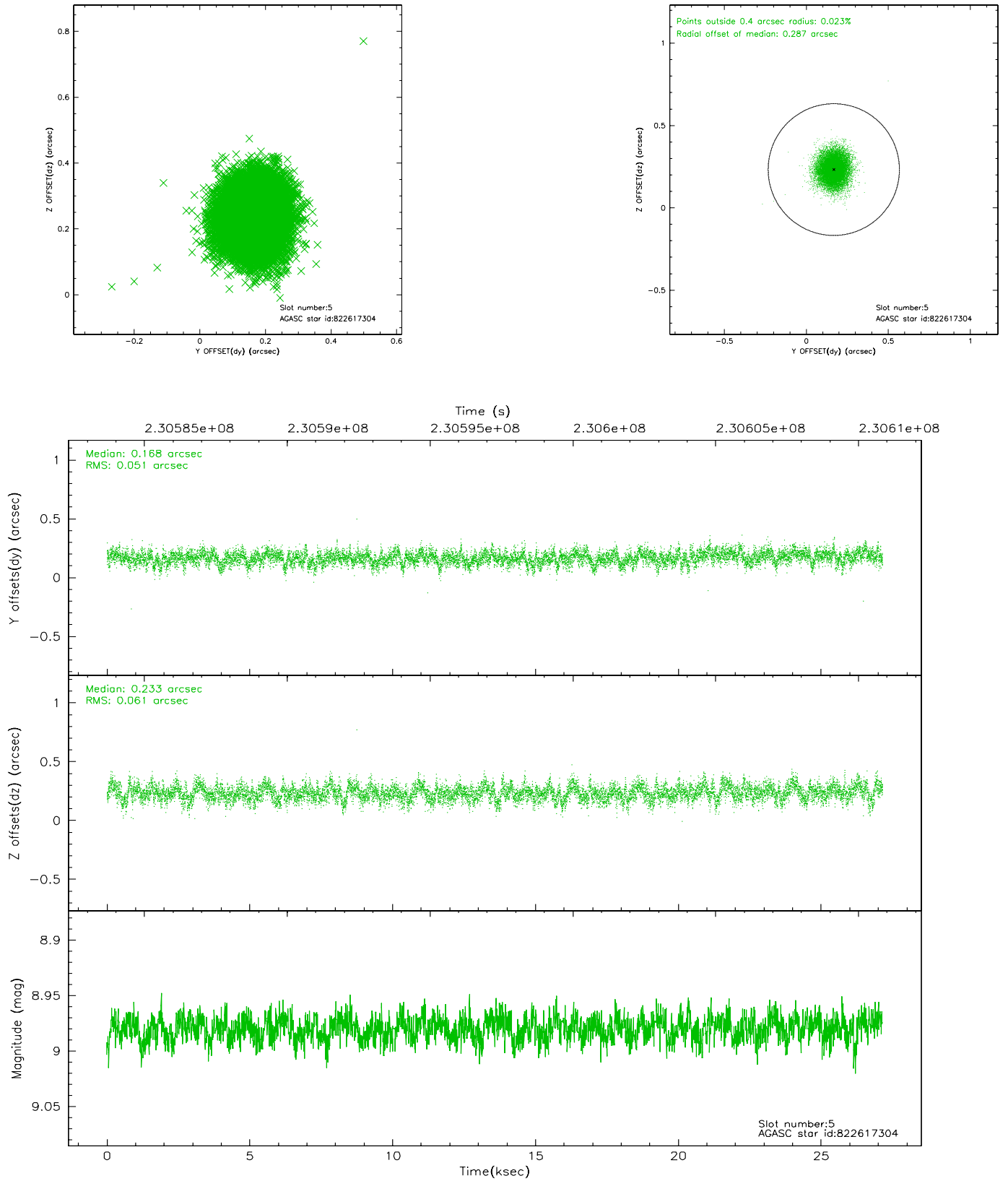
### 2.4.1 Slot 3



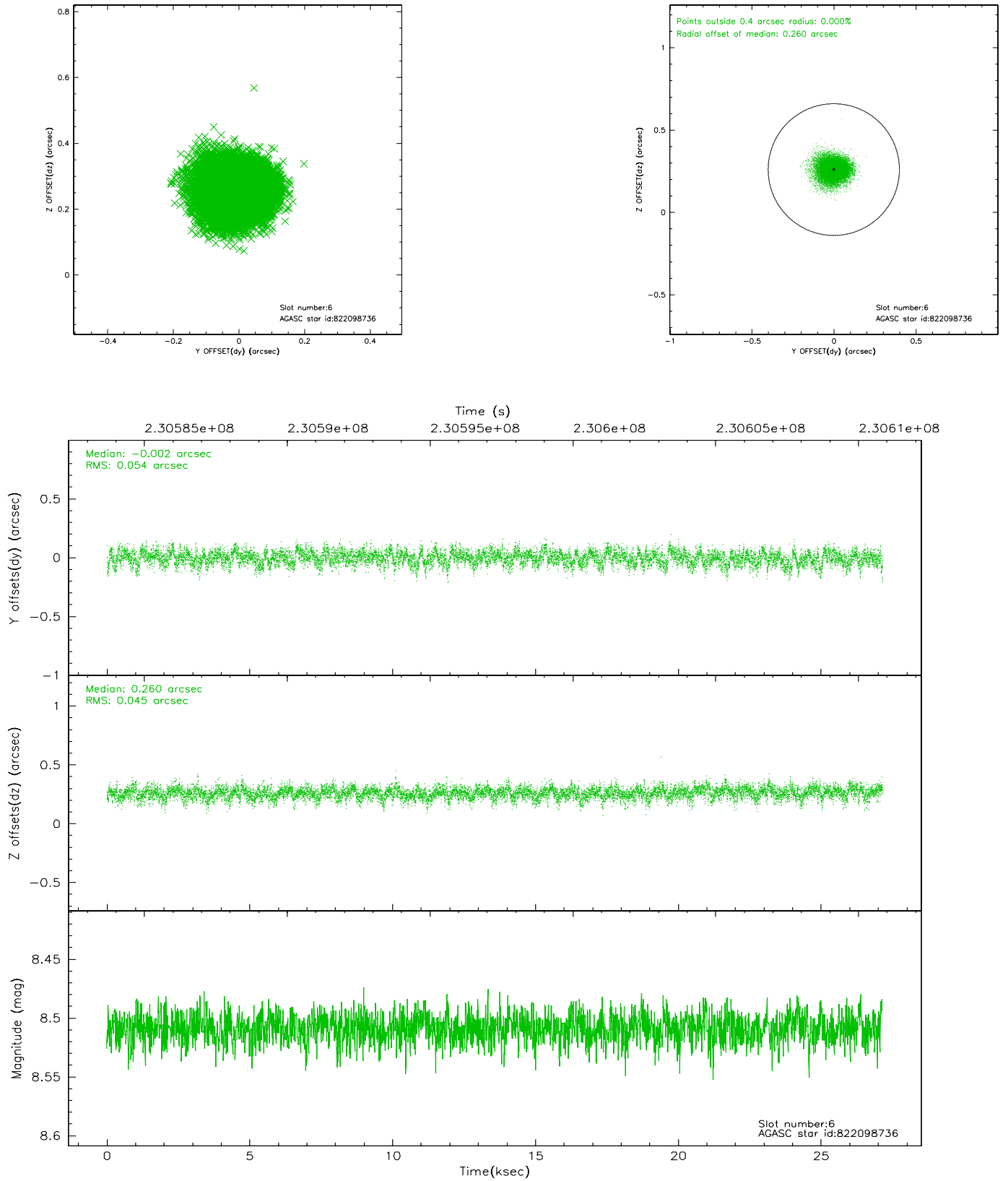
## 2.4.2 Slot 4



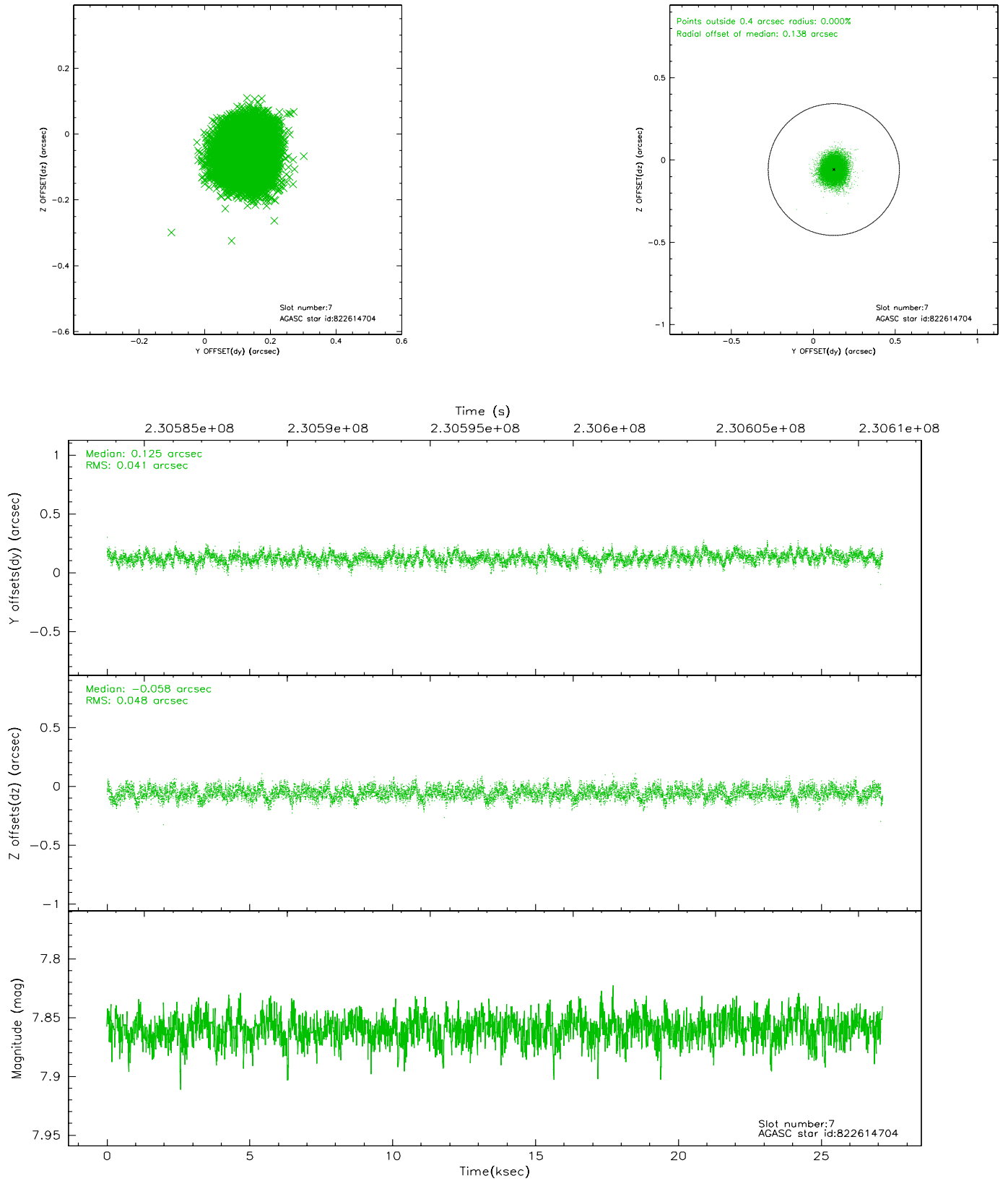
### 2.4.3 Slot 5



## 2.4.4 Slot 6

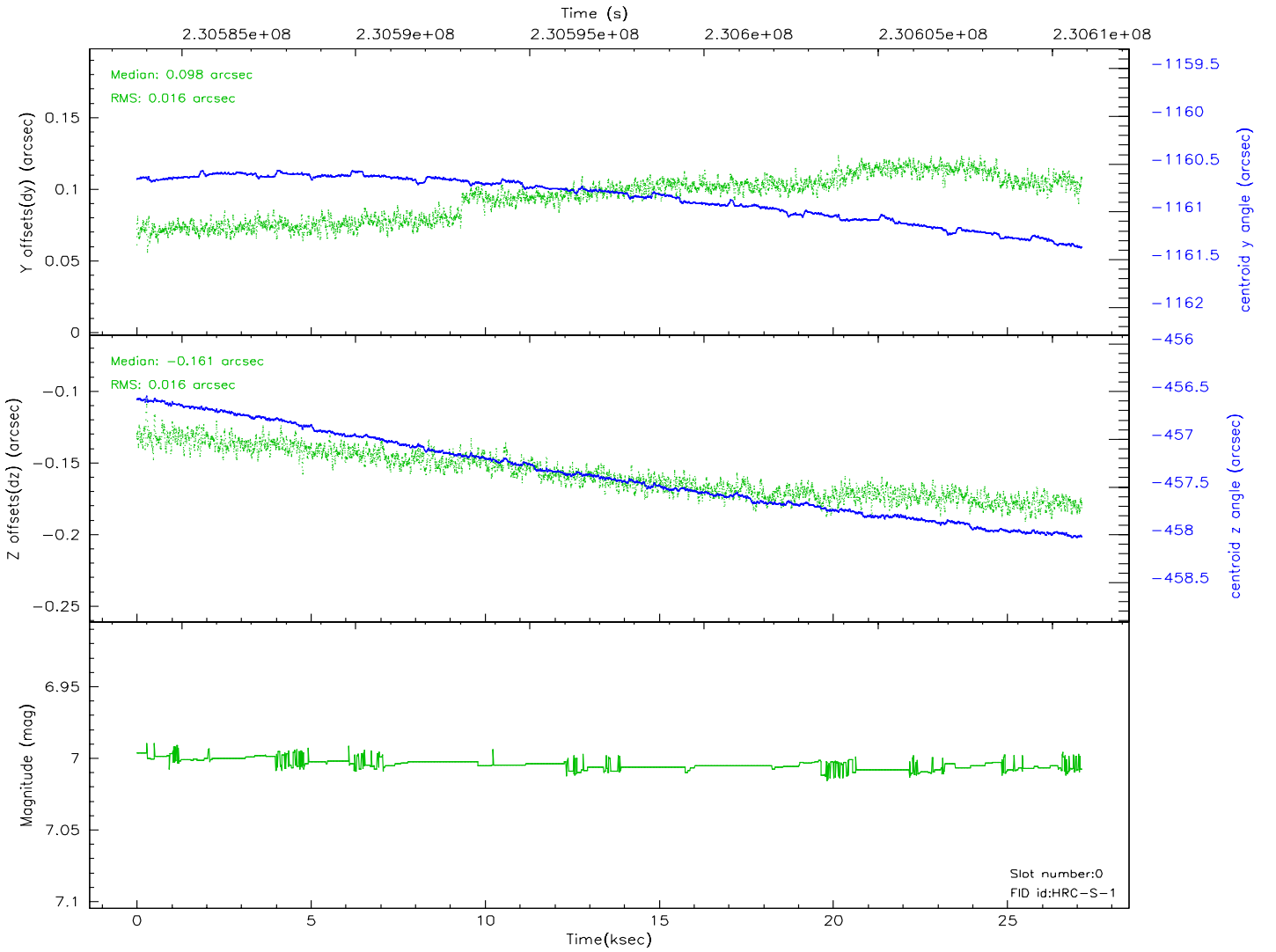
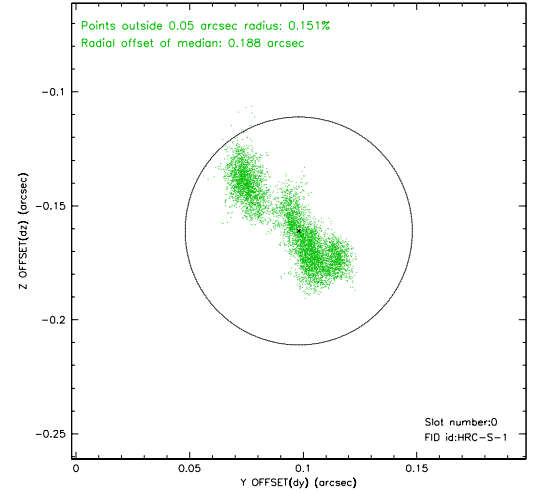
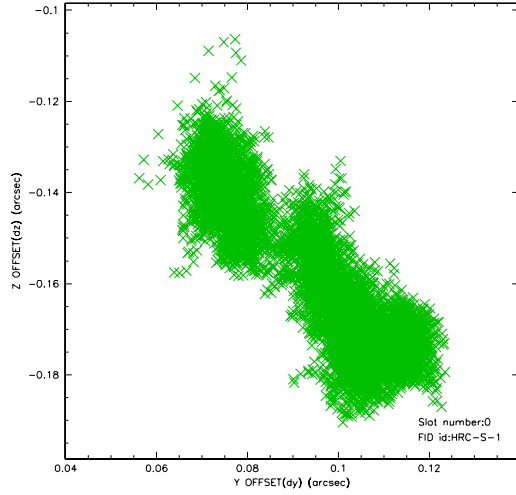


## 2.4.5 Slot 7

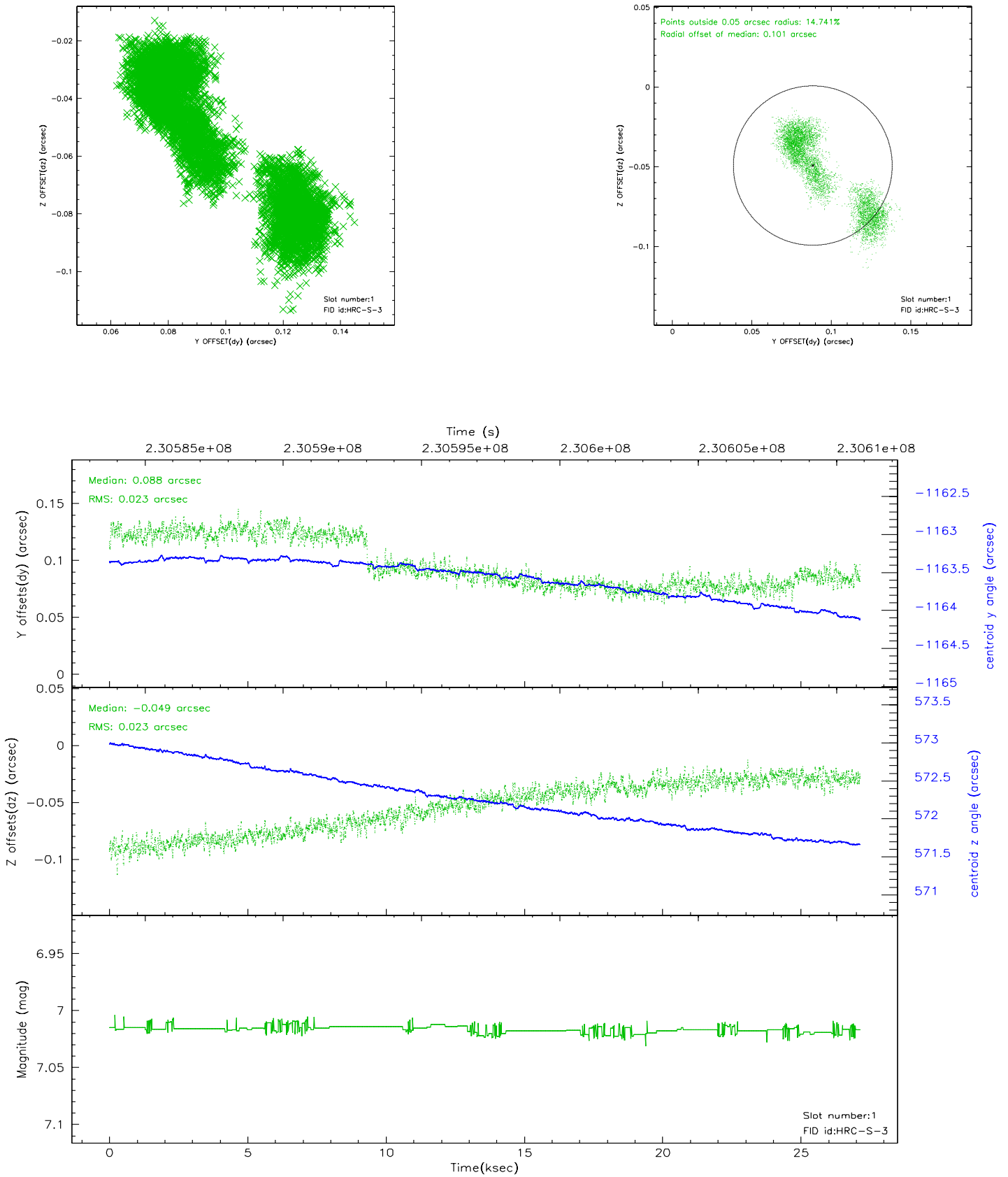


## 2.5 FID Slots

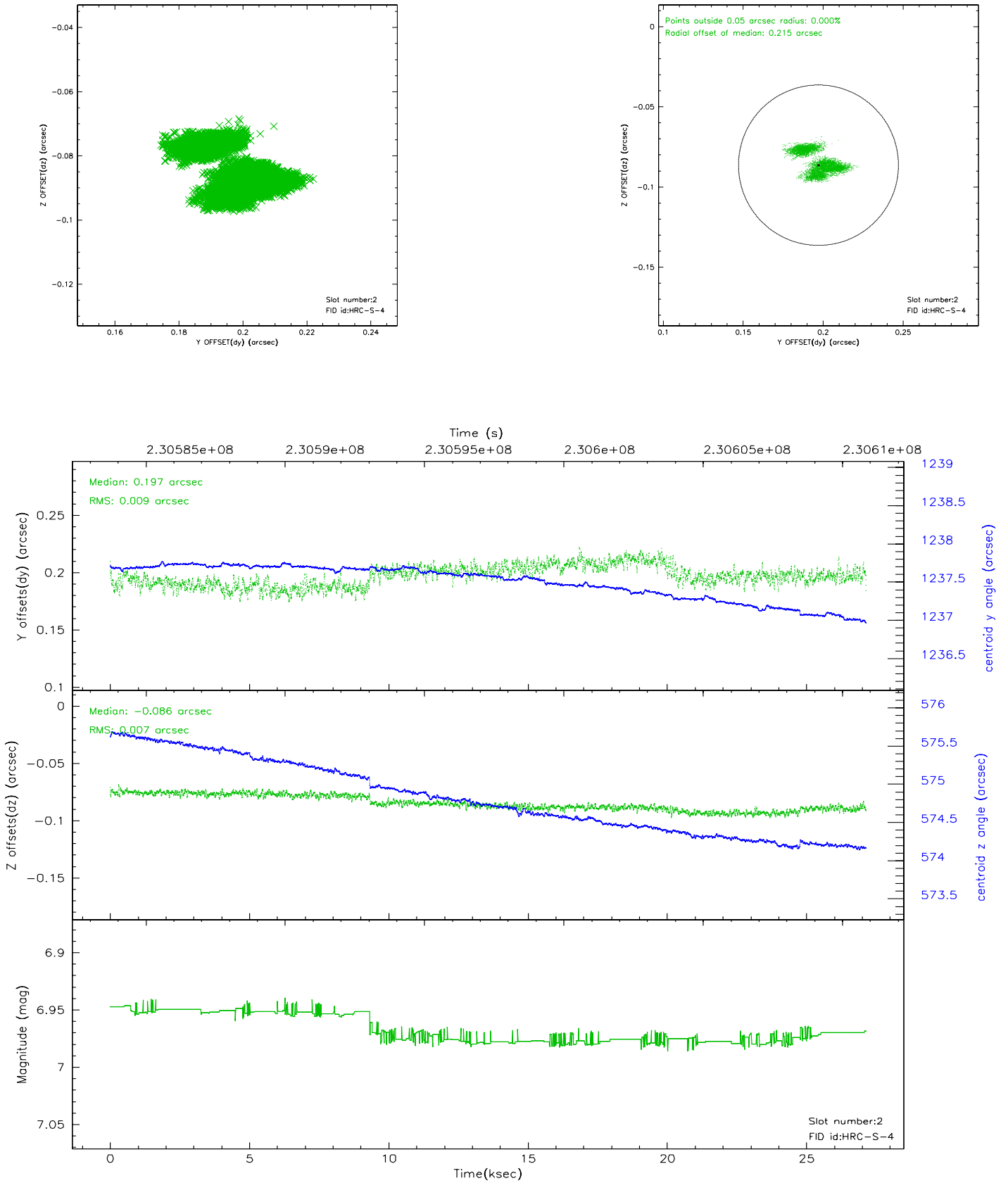
### 2.5.1 Slot 0



## 2.5.2 Slot 1

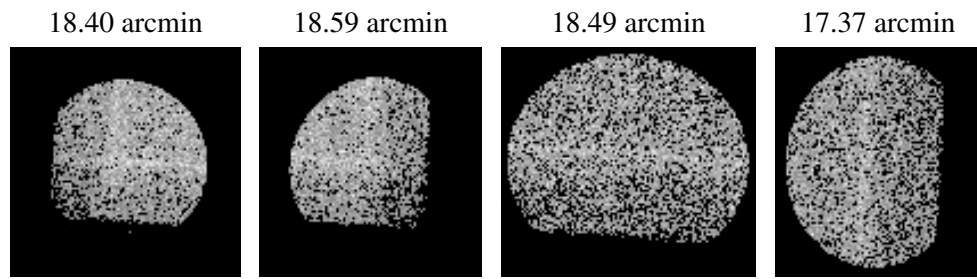


### 2.5.3 Slot 2





### 3 Point Sources



## A Summary

### A.1 Status

V&V Scientist	Jen Lauer
V&V Date (YYYY-MM-DD)	2006.03.02
V&V Edition	1
V&V Disposition and Status	OK
V&V Charge Time	27.14943

### A.2 Comments