

V&V Reference Report

L2 ASCDS Version : 8.5.1.1

Observation 5587 - L2 Version 3
Chandra X-Ray Center

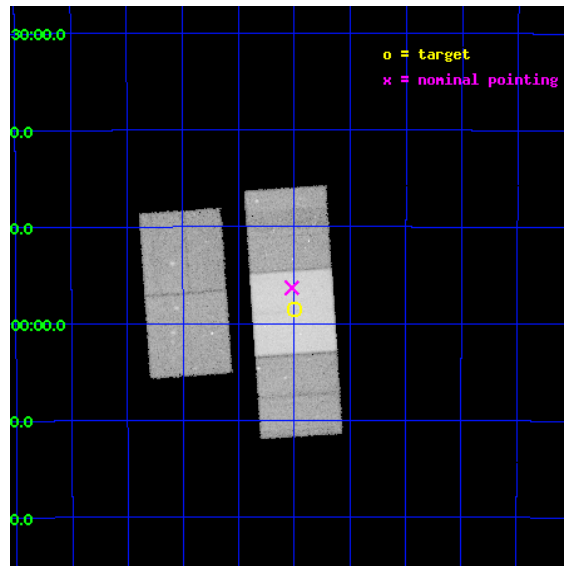
L2 Processing Date : Dec 26 2012

Contents

1	Front	2
2	OBI	3
2.1	OBI	3
2.1.1	Images	3
2.1.2	Bias	3
2.1.3	Parameters	4
2.1.4	Events	4
2.2	Compared Parameters	5
2.3	Aspect	6
2.4	Star Slots	9
2.4.1	Slot 3	9
2.4.2	Slot 4	10
2.4.3	Slot 5	11
2.4.4	Slot 6	12
2.4.5	Slot 7	13
2.5	FID Slots	14
2.5.1	Slot 0	14
2.5.2	Slot 1	15
2.5.3	Slot 2	16
A	Summary	17
A.1	Status	17
A.2	Comments	17

1 Front

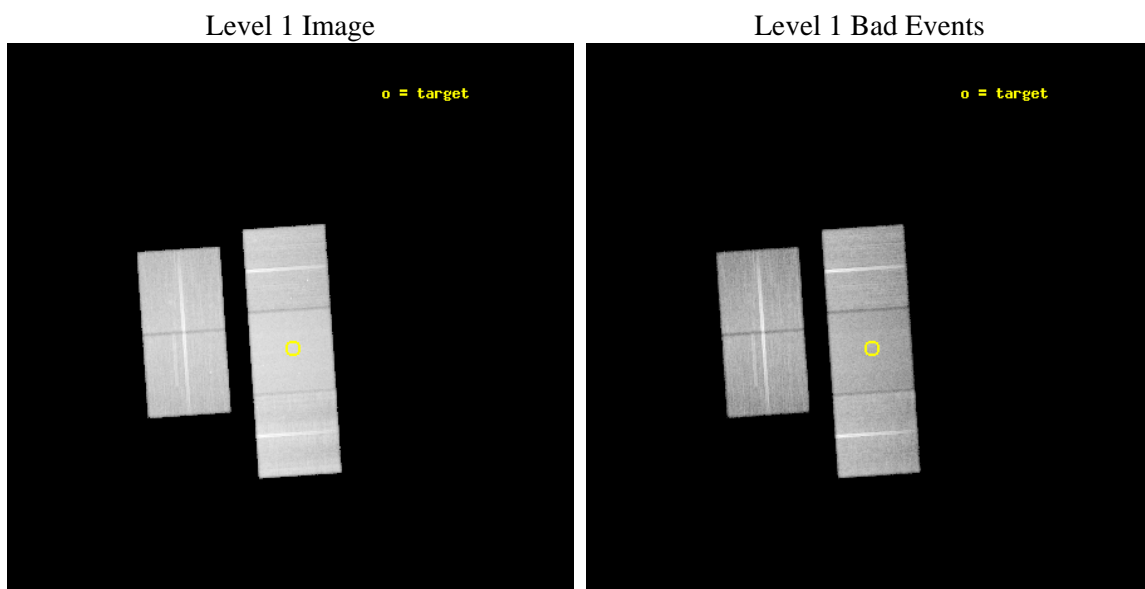
seq_num	500576	Sequence number
obs_id	5587	Observation id
title	Short-Hard Gamma-Ray Burst Afterglows with Chandra	Proposal title
observer	Dr. Dale Frail	Principal investigator
object	GRB050709	Source name
dtcycle	0	
cycle	P	events from which exps? Prim/Second/Both
ra_targ	345.375	Observer's specified target RA [deg]
dec_targ	-38.975833	Observer's specified target Dec [deg]
ra_nom	345.38054642215	Nominal RA [deg]
dec_nom	-38.93866778575	Nominal Dec [deg]
roll_nom	86.089958818535	Nominal Roll [deg]
revision	3	Processing version of data
ontime	44159.327149779	Sum of GTIs [s]
livetime	43582.353030943	Livetime [s]
ontime2	44152.88100934	Sum of GTIs [s]
ontime3	44152.963198841	Sum of GTIs [s]
ontime6	44156.145119548	Sum of GTIs [s]
ontime7	44159.327149779	Sum of GTIs [s]
ontime8	44159.204029769	Sum of GTIs [s]
l2events	354945	Number of level 2 events



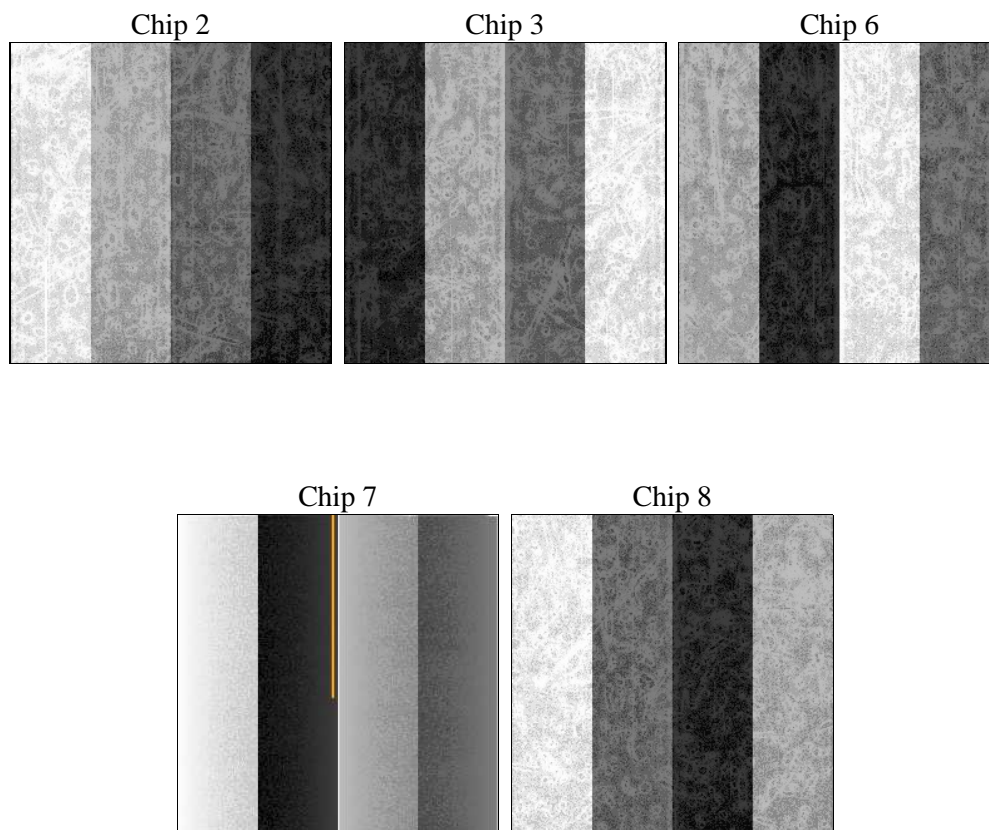
2 OBI

2.1 OBI

2.1.1 Images



2.1.2 Bias



2.1.3 Parameters

obi_num	0	Obi number	sched_exp_time	44000.000000	[s] Scheduled observation exposure time
ascdsver	8.5.1.1	Processing system revision	ontime	44159.327149779	Sum of GTIs [s]
caldbver	4.5.5	 	ontime2	44152.88100934	Sum of GTIs [s]
date	2012-12-26T01:33:31	Date and time of file creation	ontime3	44152.963198841	Sum of GTIs [s]
revision	3	Processing version of data	ontime6	44156.145119548	Sum of GTIs [s]
			ontime7	44159.327149779	Sum of GTIs [s]
			ontime8	44159.204029769	Sum of GTIs [s]
			l1events	1911233	Number of level 1 events

2.1.4 Events

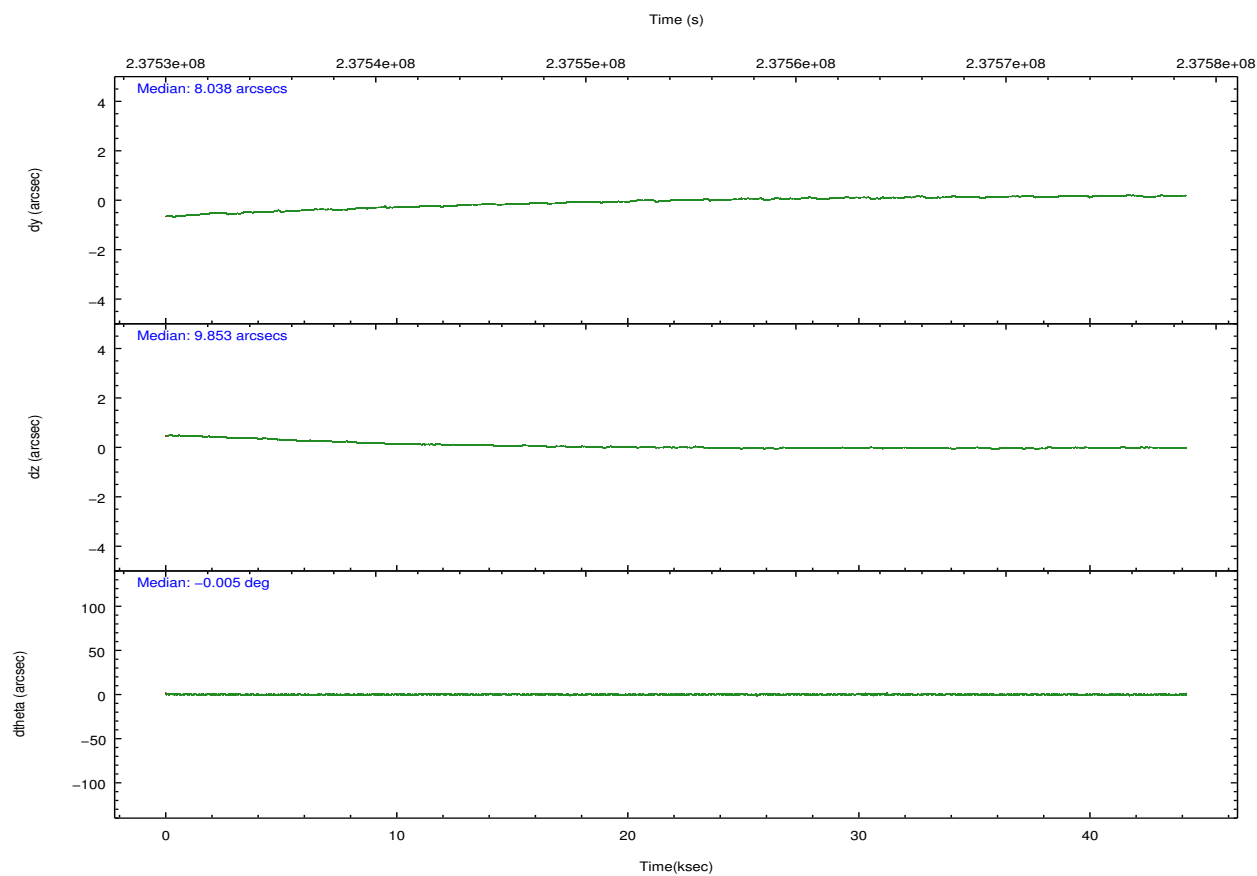
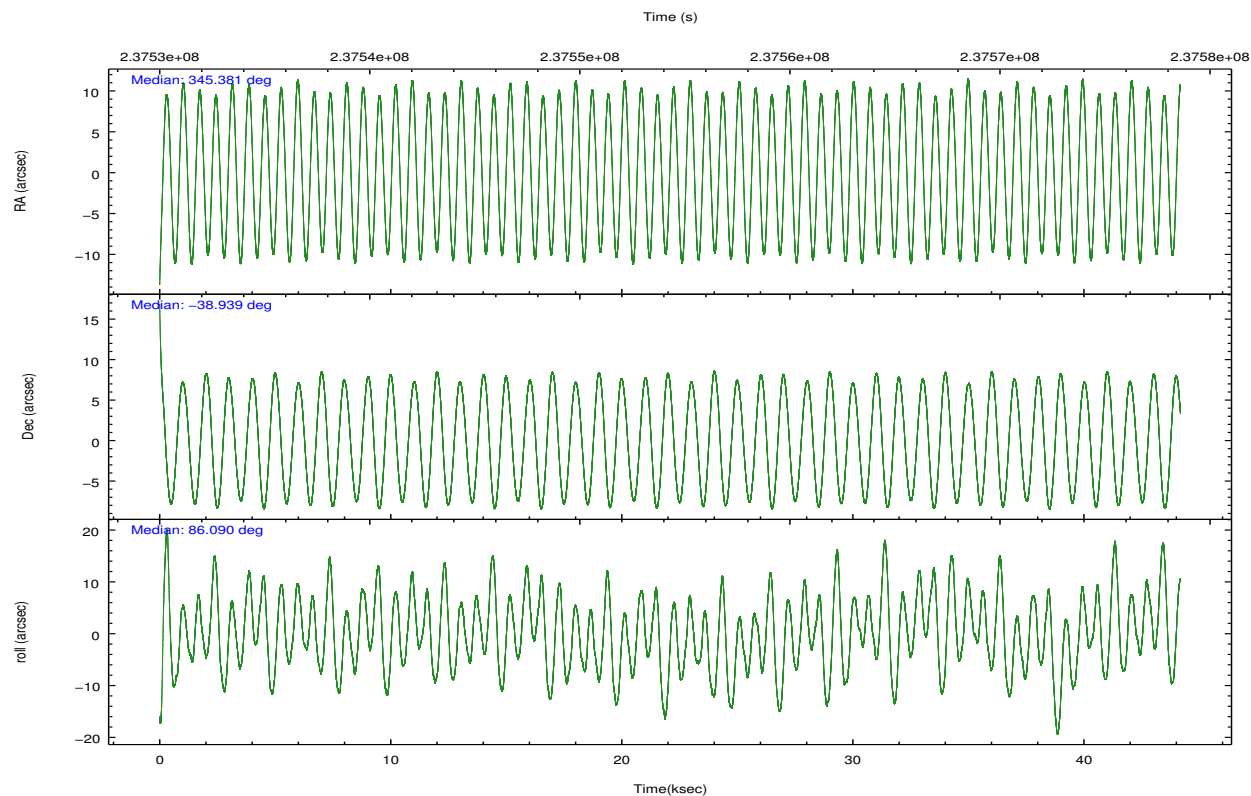
	ccd 2	ccd 3	ccd 6	ccd 7	ccd 8
level 1 events	325725	332751	344624	458827	449306
rejected events	280896	287164	297490	264954	331029
rejected %	86%	86%	86%	57%	73%

	ccd 2	ccd 3	ccd 6	ccd 7	ccd 8
grade 0 events	20257	20157	19539	17220	40808
	6%	6%	5%	3%	9%
grade 1 events	188	224	175	440	339
	0%	0%	0%	0%	0%
grade 2 events	9573	9779	10838	38096	23456
	2%	2%	3%	8%	5%
grade 3 events	3764	3781	3908	16840	14400
	1%	1%	1%	3%	3%
grade 4 events	3857	3949	3904	16872	13192
	1%	1%	1%	3%	2%
grade 5 events	12781	14812	15247	42927	20502
	3%	4%	4%	9%	4%
grade 6 events	7381	7925	8946	104857	26428
	2%	2%	2%	22%	5%
grade 7 events	267924	272124	282067	221575	310181
	82%	81%	81%	48%	69%

2.2 Compared Parameters

Parameter	Planned	Actual	Parameter	Planned	Actual
Instrument	ACIS	ACIS	Obspar format version number	7	7
Detector	ACIS-23678	ACIS-23678	Obspar file type	PREDICTED	ACTUAL
Grating	NONE	NONE	Obspar update status	NONE	UPDATED
Data mode	VFAINT	VFAINT	Number of optional ACIS chips dropped	0	0
Observation mode	POINTING	POINTING	On-chip summing requested	N	N
[deg] Pointing RA	345.396381	345.3805464221454	Subarray requested	NONE	NONE
[deg] Pointing Dec	-38.962983	-38.93866778575033	Alternating exposures requested	N	N
[deg] Pointing Roll	85.943283	86.08995881853508	[s] Primary exposure time	0.000000	3.1
[mm] SIM focus pos	-0.684267	-0.6828225247311905			
[mm] SIM defocus	0	0.001444936568705701			
[mm] SIM translation stage pos	-190.132523	-190.1400660498719			
[mm] SIM translation stage offset	0	0.00754346686406393			
[s] Observation start time (MET)	237532387.184000	237531398.82875			
Observation start date	2005-07-12T05:12:03	2005-07-12T04:56:38			
[s] Observation end time (MET)	237576387.184000	237576790.44332			
Observation end date	2005-07-12T17:25:23	2005-07-12T17:33:10			
Read mode	TIMED	TIMED			

2.3 Aspect

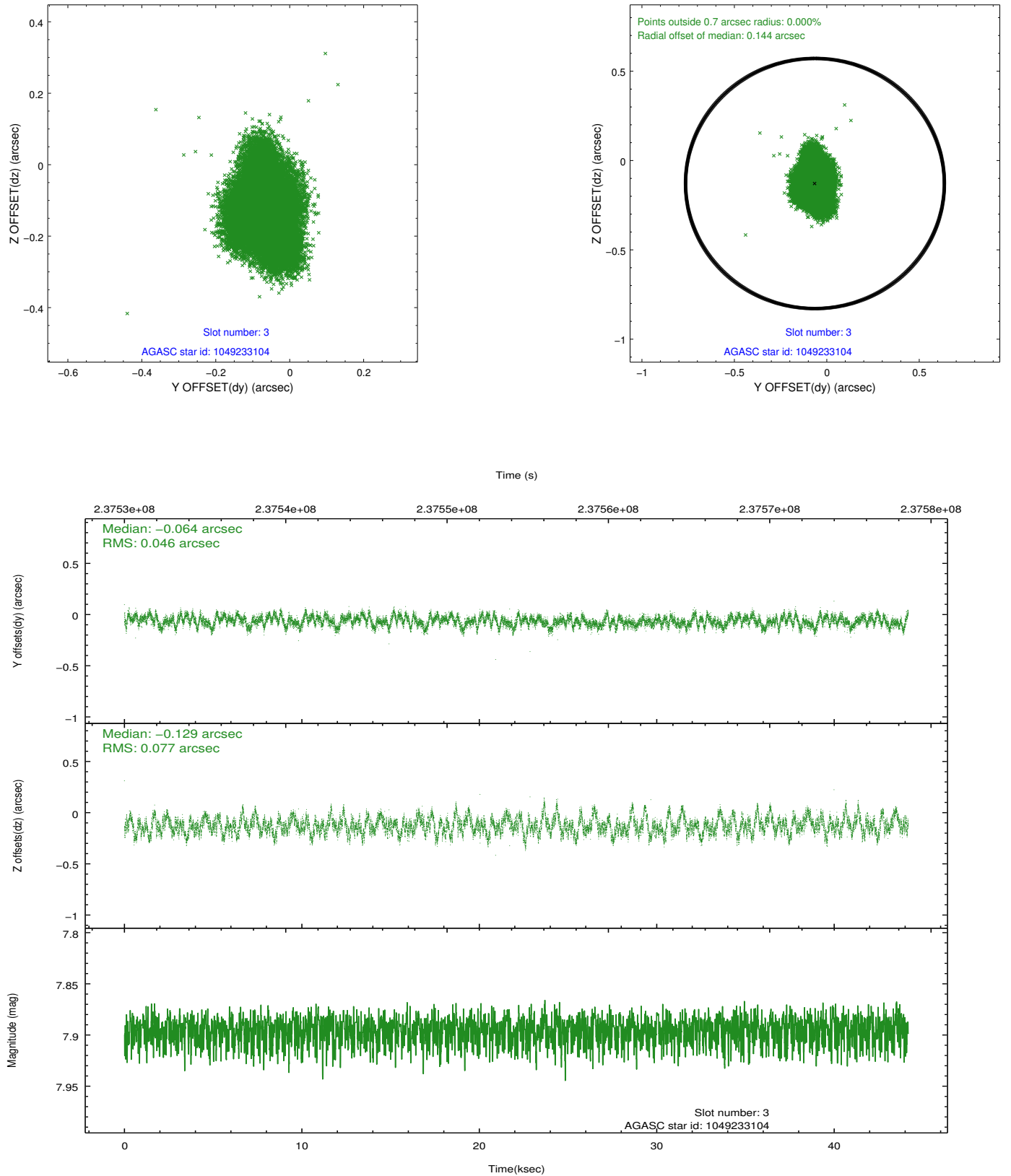


Slot Statistics

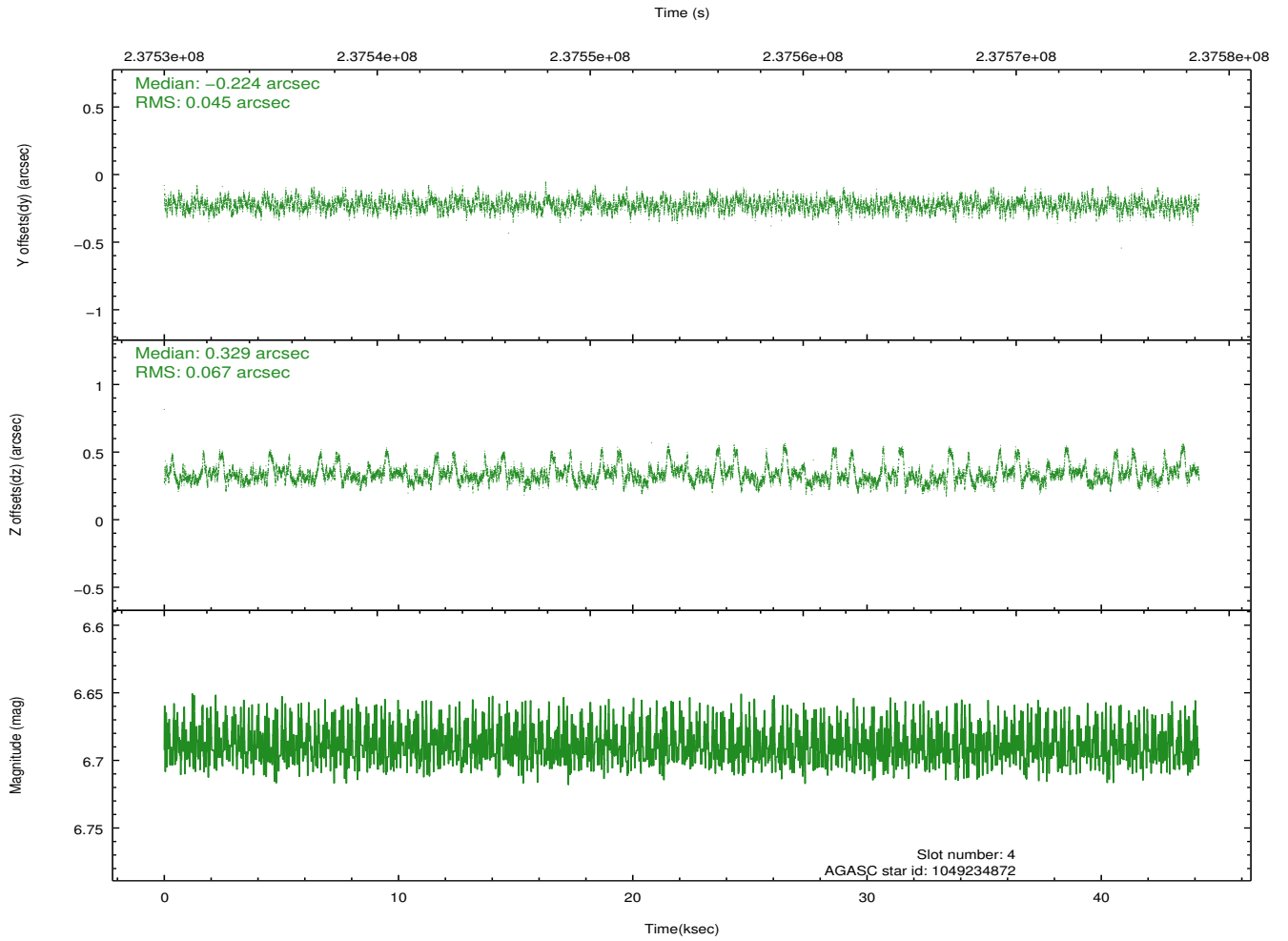
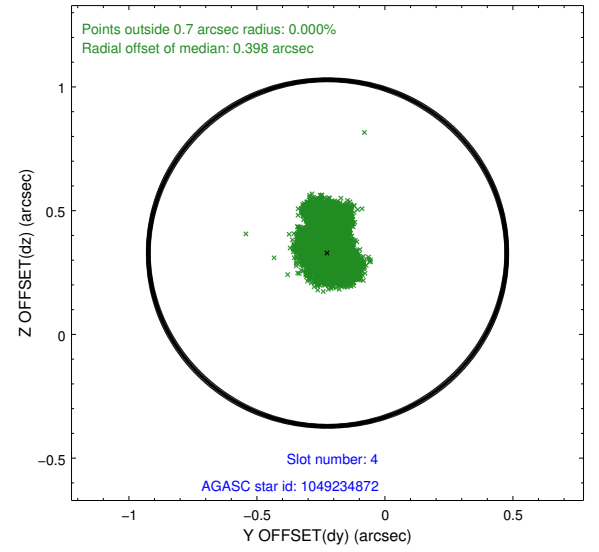
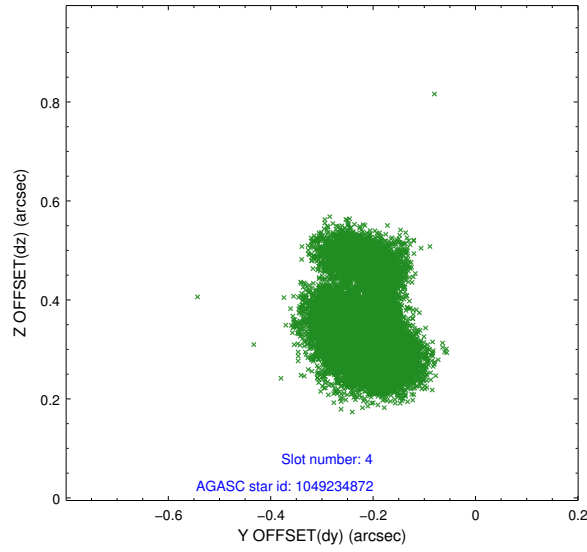
slot	status	id	mag	n_pts	med_dy	med_dz	dr1	dr2	ra	dec	mean_y	mean_z
0	FID	ACIS-S-2	7.10	10776	-0.042	-0.029	0.008	0.015	0.000000	0.000000	-760.73	-1731.22
1	FID	ACIS-S-4	7.20	10775	0.118	0.028	0.014	0.023	0.000000	0.000000	2152.66	177.39
2	FID	ACIS-S-5	7.23	10776	-0.109	0.010	0.015	0.030	0.000000	0.000000	-1813.68	170.95
3	GUIDE	1049233104	7.90	21550	-0.064	-0.129	0.095	0.157	345.317260	-38.843726	412.61	251.85
4	GUIDE	1049234872	6.69	21551	-0.224	0.329	0.077	0.162	345.874120	-38.433441	1993.41	-1208.61
5	GUIDE	1049235968	9.64	21535	0.084	0.117	0.101	0.163	345.601758	-39.176537	-726.57	-625.77
6	GUIDE	1049240648	9.62	21540	0.130	-0.018	0.119	0.199	345.398802	-39.445998	-1733.70	-129.46
7	GUIDE	1049238560	10.86	21497	0.074	-0.300	0.293	0.485	344.775462	-38.689212	853.99	1809.70

2.4 Star Slots

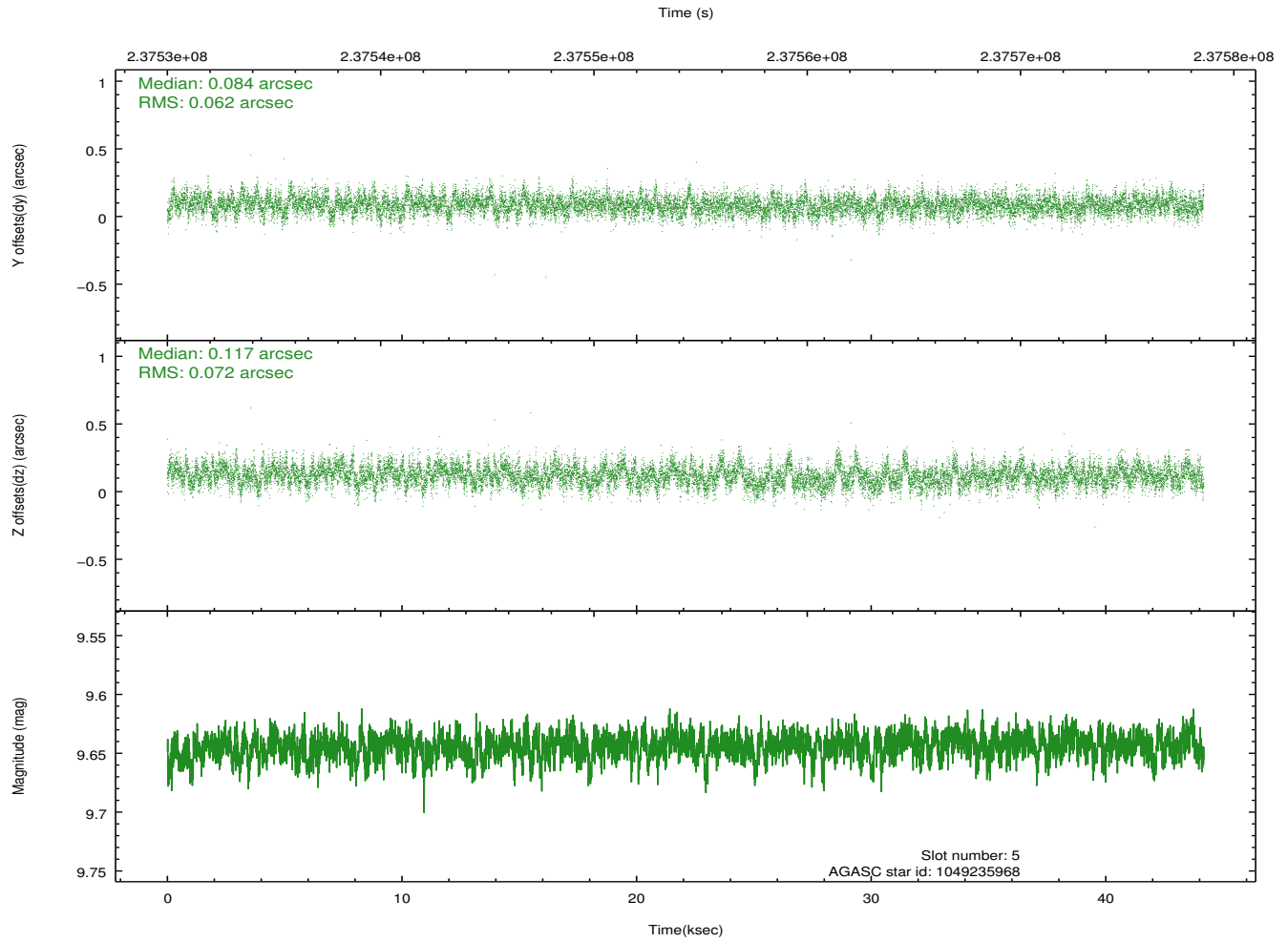
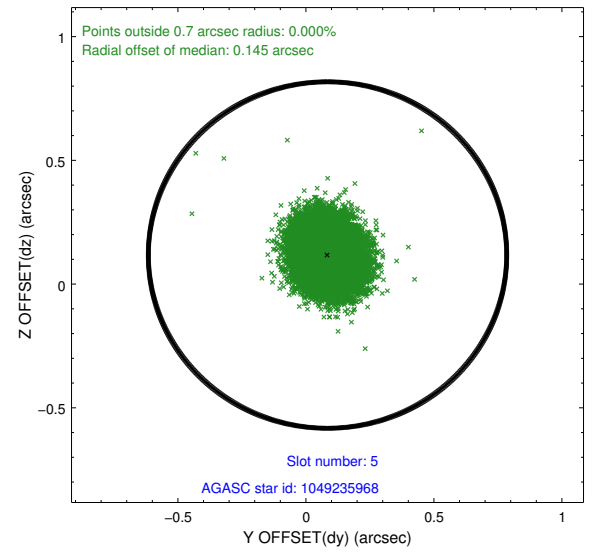
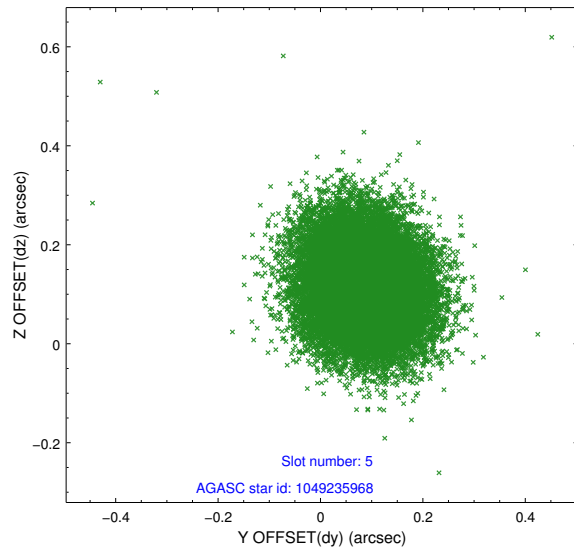
2.4.1 Slot 3



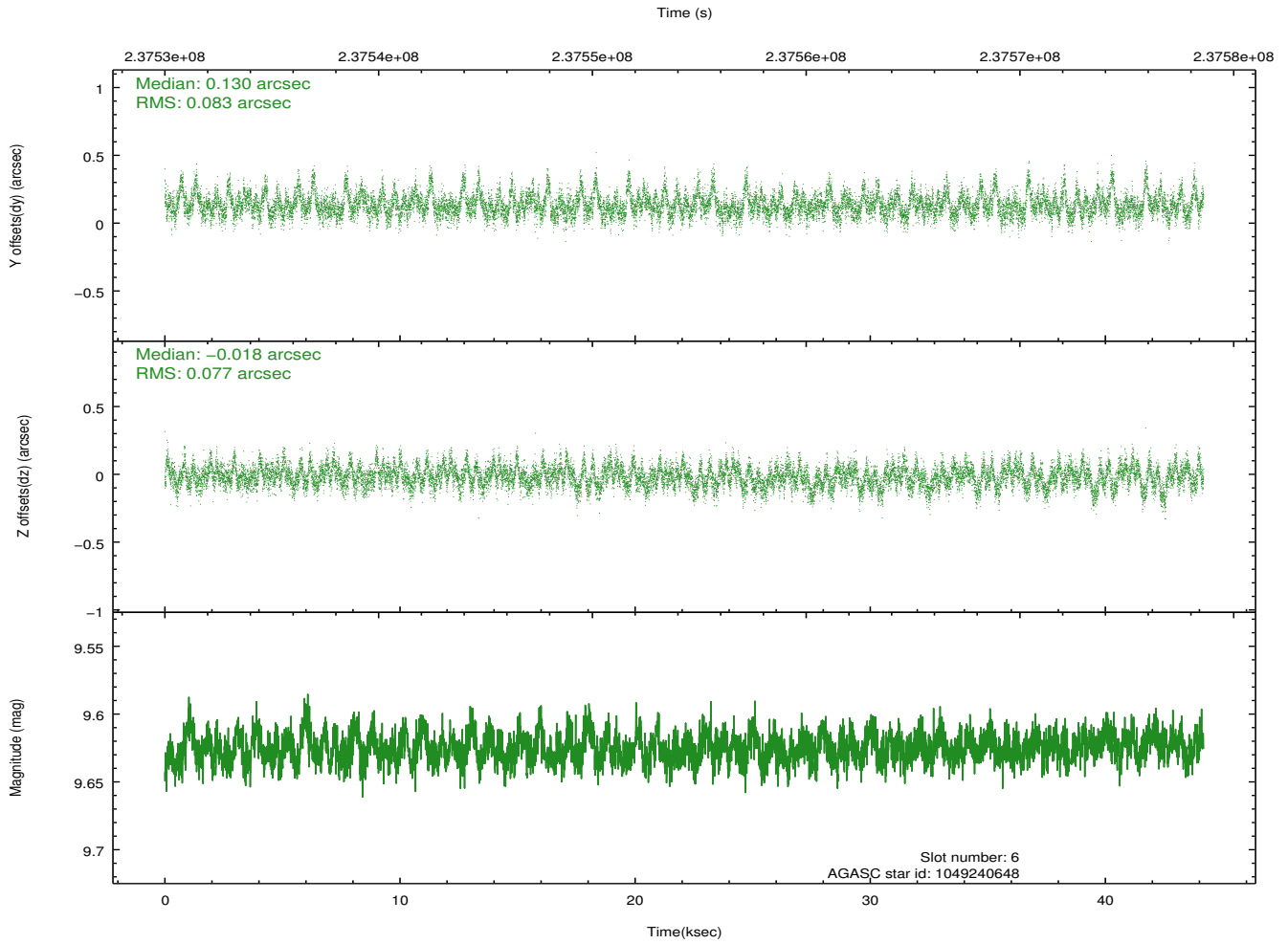
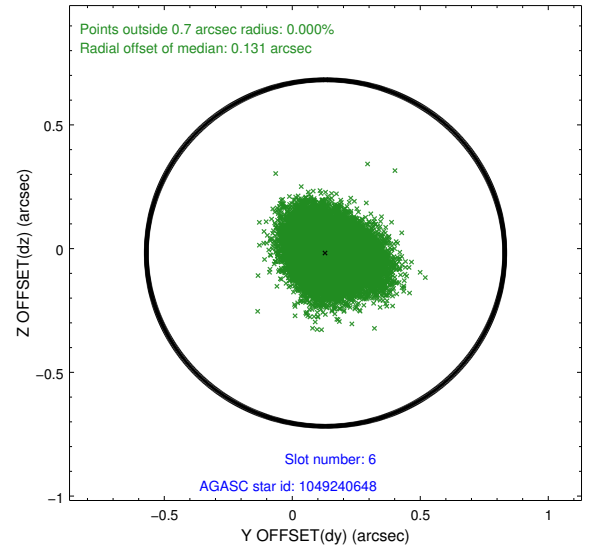
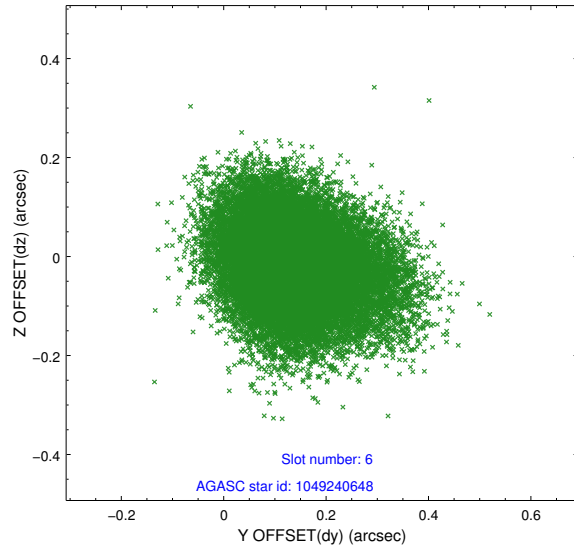
2.4.2 Slot 4



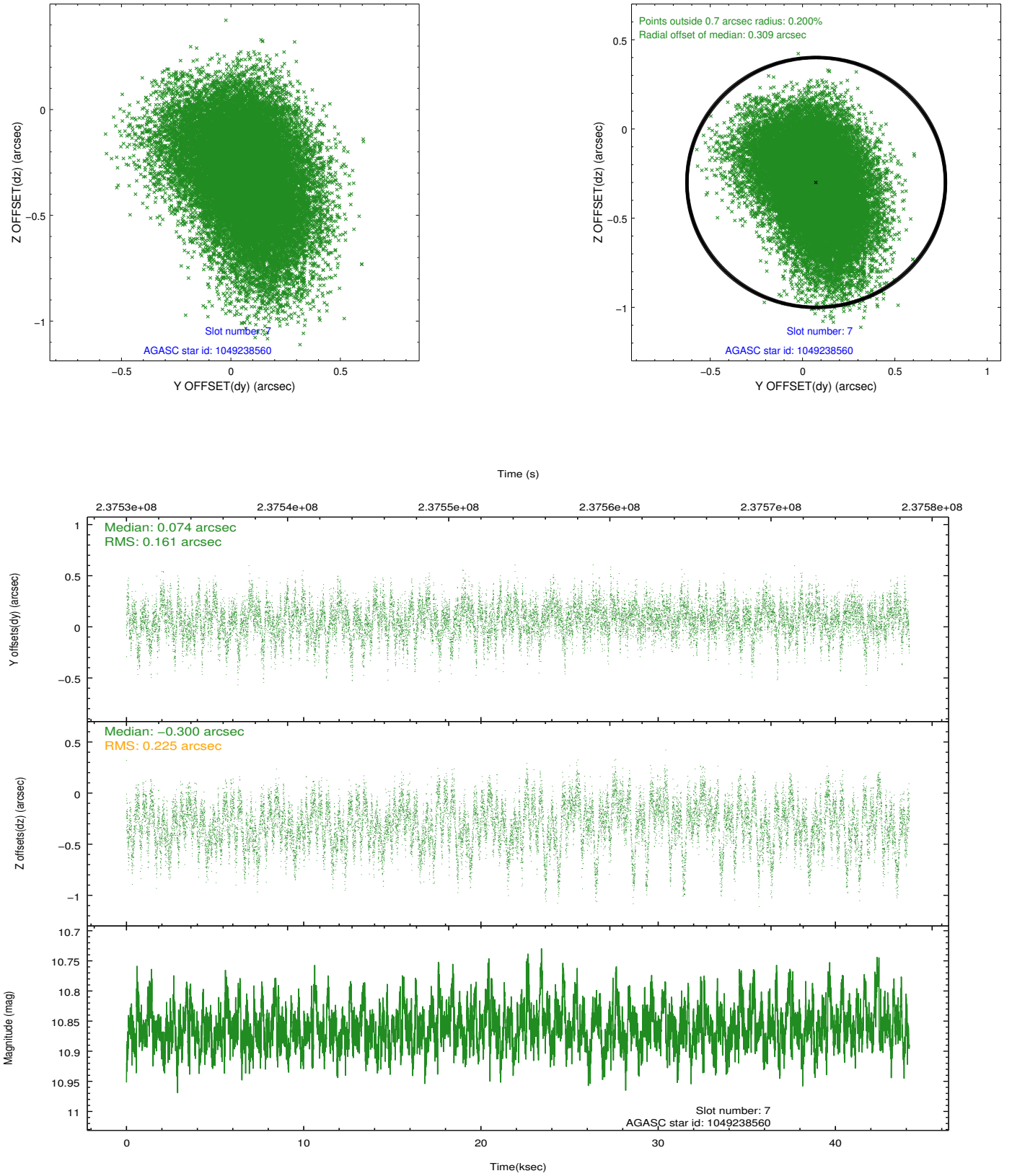
2.4.3 Slot 5



2.4.4 Slot 6

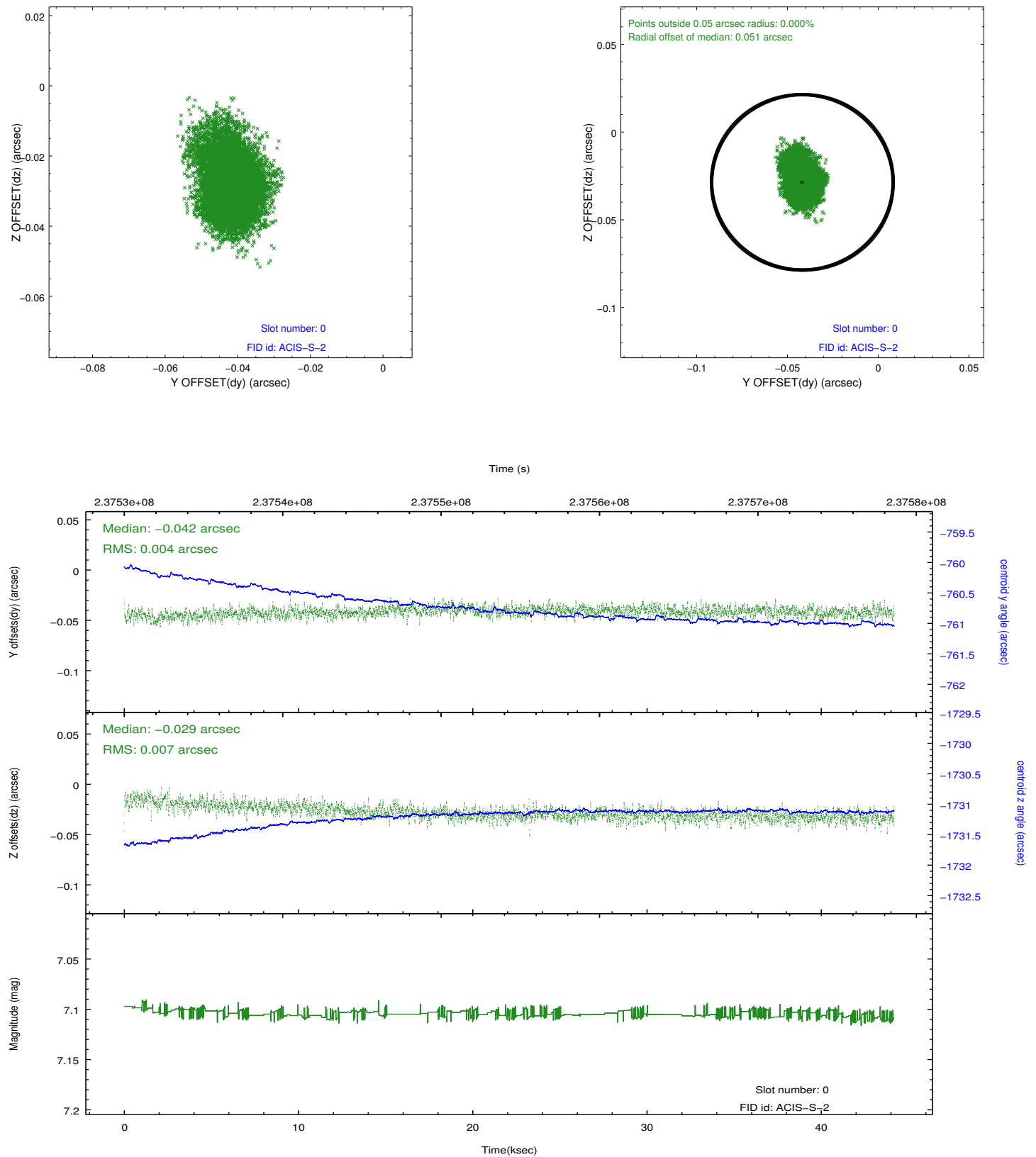


2.4.5 Slot 7

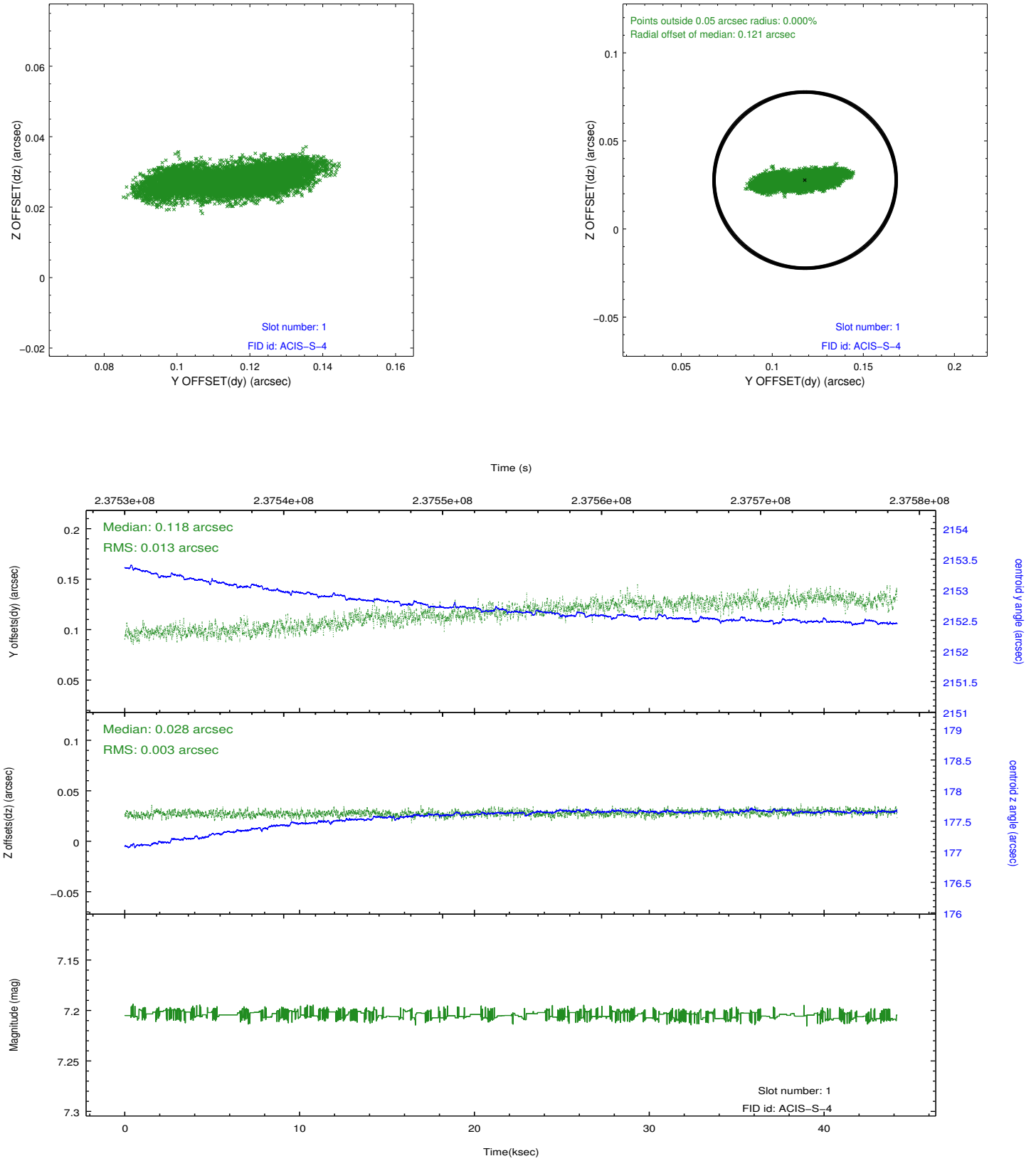


2.5 FID Slots

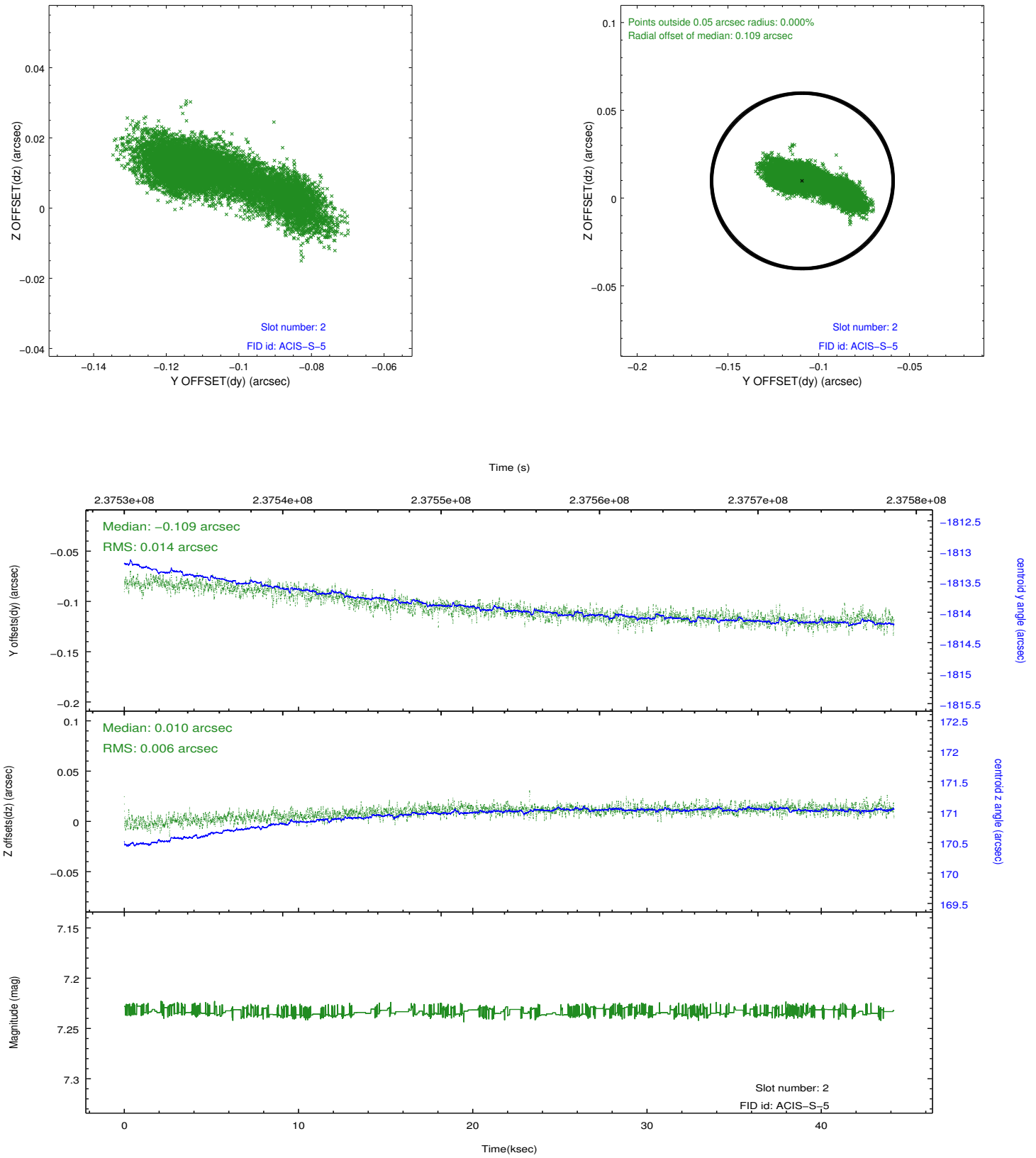
2.5.1 Slot 0



2.5.2 Slot 1



2.5.3 Slot 2



A Summary

A.1 Status

V&V Scientist	Beth Sundheim
V&V Date (YYYY-MM-DD)	2013.01.22
V&V Edition	1
V&V Disposition and Status	OK
V&V Charge Time	44.15949

A.2 Comments