

V&V Reference Report

L2 ASCDS Version : 8.5.1.1

Observation 5559 - L2 Version 3
Chandra X-Ray Center

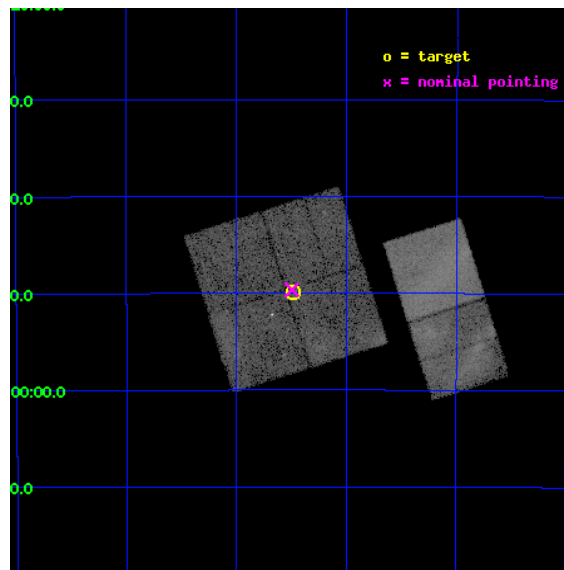
L2 Processing Date : Dec 22 2012

Contents

1	Front	2
2	OBI	3
2.1	OBI	3
2.1.1	Images	3
2.1.2	Bias	3
2.1.3	Parameters	4
2.1.4	Events	4
2.2	Compared Parameters	5
2.3	Aspect	6
2.4	Star Slots	9
2.4.1	Slot 3	9
2.4.2	Slot 4	10
2.4.3	Slot 5	11
2.4.4	Slot 6	12
2.4.5	Slot 7	13
2.5	FID Slots	14
2.5.1	Slot 0	14
2.5.2	Slot 1	15
2.5.3	Slot 2	16
A	Summary	17
A.1	Status	17
A.2	Comments	17

1 Front

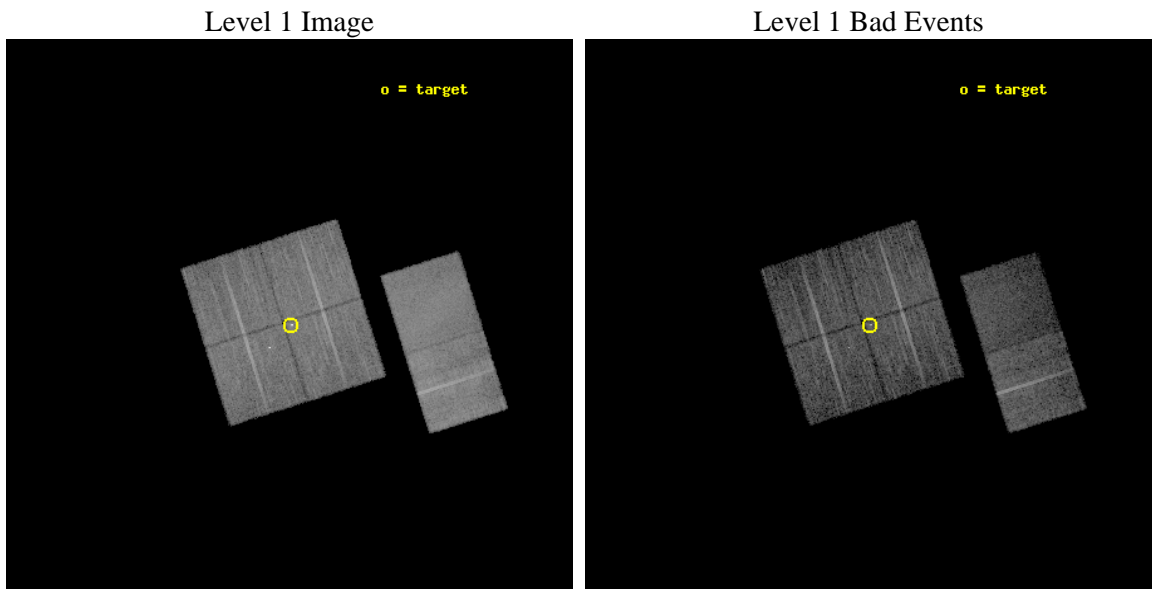
seq_num	500548	Sequence number
obs_id	5559	Observation id
title	Accurate localization of the CCO candidate in SNR G347.3-0.5	Propo
observer	Dr Jasmina Lazendic	Principal investigator
object	1WGA J1713.4-3949	Source name
dtcycle	0	
cycle	P	events from which exps? Prim/Second/Both
ra_targ	258.37	Observer's specified target RA [deg]
dec_targ	-39.831	Observer's specified target Dec [deg]
ra_nom	258.37385479315	Nominal RA [deg]
dec_nom	-39.827456736289	Nominal Dec [deg]
roll_nom	72.491186271364	Nominal Roll [deg]
revision	3	Processing version of data
ontime	9765.7772165835	Sum of GTIs [s]
livetime	9642.117065222	Livetime [s]
ontime0	9765.6540966034	Sum of GTIs [s]
ontime1	9759.2131460905	Sum of GTIs [s]
ontime2	9762.4951764047	Sum of GTIs [s]
ontime3	9765.7772165835	Sum of GTIs [s]
ontime7	9765.8182565868	Sum of GTIs [s]
ontime8	9765.8592965901	Sum of GTIs [s]
l2events	130596	Number of level 2 events



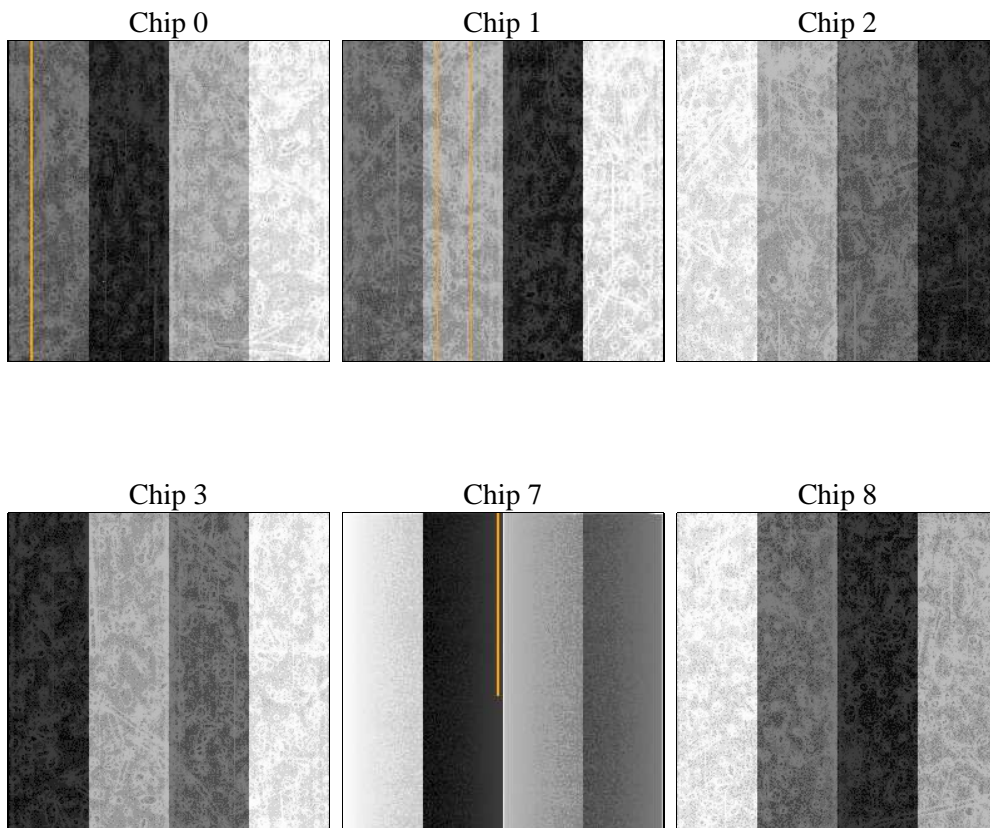
2 OBI

2.1 OBI

2.1.1 Images



2.1.2 Bias



2.1.3 Parameters

obi_num	0	Obi number	sched_exp_time	9719.458000	[s] Scheduled observation exposure time
ascdsver	8.5.1.1	Processing system revision	ontime	9765.7772165835	Sum of GTIs [s]
caldsver	4.5.5	 	ontime0	9765.6540966034	Sum of GTIs [s]
date	2012-12-22T13:57:55	Date and time of file creation	ontime1	9759.2131460905	Sum of GTIs [s]
revision	3	Processing version of data	ontime2	9762.4951764047	Sum of GTIs [s]
			ontime3	9765.7772165835	Sum of GTIs [s]
			ontime7	9765.8182565868	Sum of GTIs [s]
			ontime8	9765.8592965901	Sum of GTIs [s]
			l1events	475494	Number of level 1 events

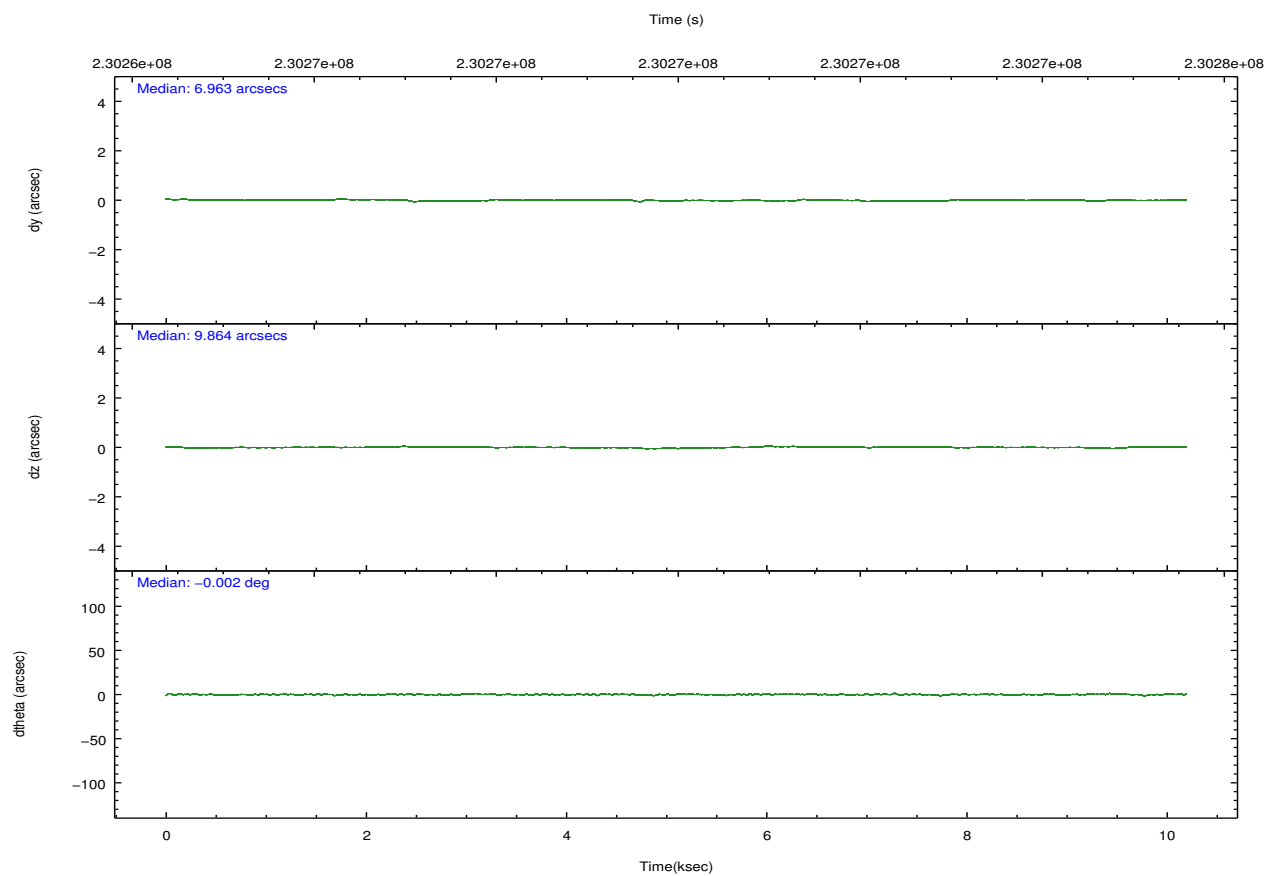
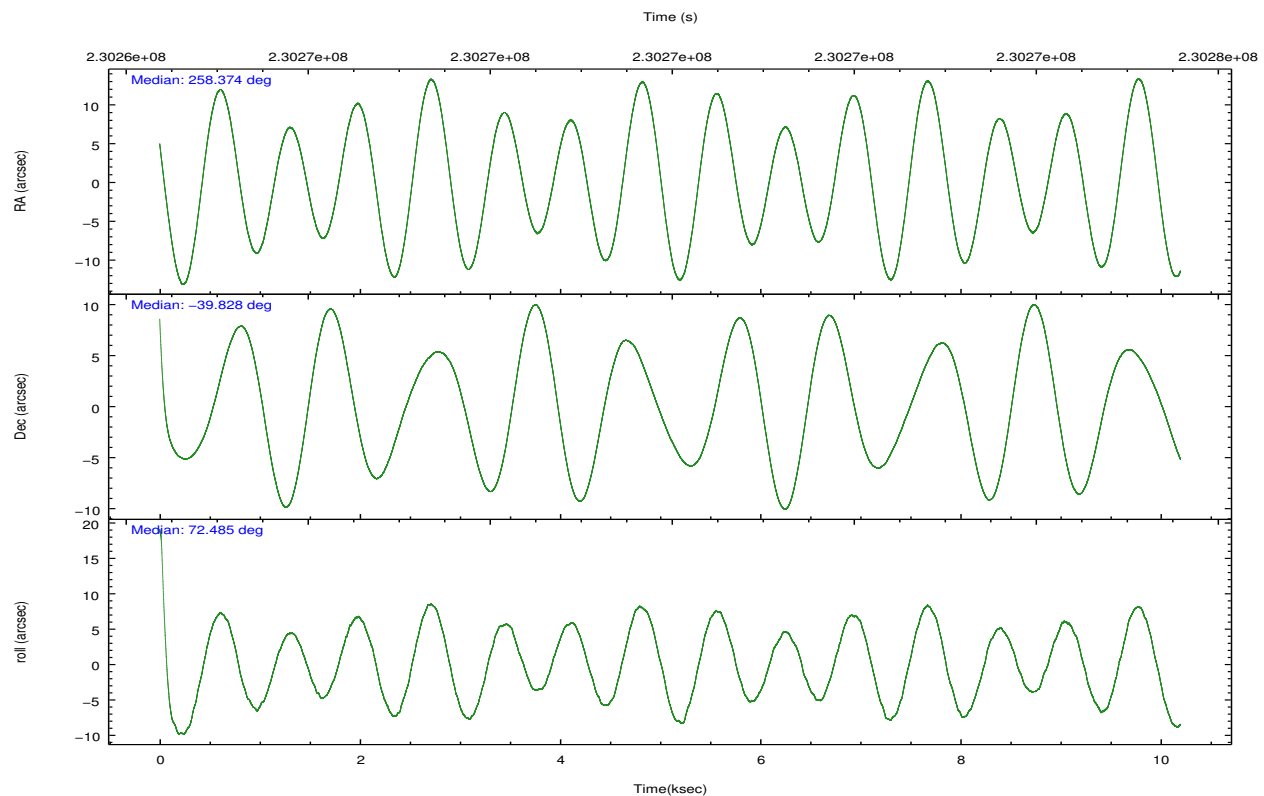
2.1.4 Events

	ccd 0	ccd 1	ccd 2	ccd 3	ccd 7	ccd 8		ccd 0	ccd 1	ccd 2	ccd 3	ccd 7	ccd 8
level 1 events	65352	70258	75450	72744	87896	103794	grade 0 events	8464	11027	9182	10672	6681	21014
rejected events	51028	52306	60565	55620	39498	64813		12%	15%	12%	14%	7%	20%
rejected %	78%	74%	80%	76%	44%	62%	grade 1 events	67	210	60	284	62	150
								0%	0%	0%	0%	0%	0%
							grade 2 events	2359	2734	2355	2574	10090	6598
								3%	3%	3%	3%	11%	6%
							grade 3 events	1077	1223	1015	1135	4752	2834
								1%	1%	1%	1%	5%	2%
							grade 4 events	939	1175	977	1100	4666	2634
								1%	1%	1%	1%	5%	2%
							grade 5 events	2239	2683	2196	2757	7618	3794
								3%	3%	2%	3%	8%	3%
							grade 6 events	1497	1807	1370	1654	22239	5915
								2%	2%	1%	2%	25%	5%
							grade 7 events	48710	49399	58295	52568	31788	60855
								74%	70%	77%	72%	36%	58%

2.2 Compared Parameters

Parameter	Planned	Actual	Parameter	Planned	Actual
Instrument	ACIS	ACIS	Obspar format version number	7	7
Detector	ACIS-012378	ACIS-012378	Obspar file type	PREDICTED	ACTUAL
Grating	NONE	NONE	Obspar update status	NONE	UPDATED
Data mode	VFAINT	VFAINT	Number of optional ACIS chips dropped	0	0
Observation mode	POINTING	POINTING	On-chip summing requested	N	N
[deg] Pointing RA	258.381774	258.3738547931467	Subarray requested	NONE	NONE
[deg] Pointing Dec	-39.854190	-39.82745673628887	Alternating exposures requested	N	N
[deg] Pointing Roll	72.287543	72.49118627136389	[s] Primary exposure time	0.000000	3.2
[mm] SIM focus pos	-0.782348	-0.7809083437167272			
[mm] SIM defocus	0	0.001439871863259334			
[mm] SIM translation stage pos	-233.592463	-233.5874344608287			
[mm] SIM translation stage offset	0	-0.005018542100998502			
[s] Observation start time (MET)	230265353.184000	230264198.72231			
Observation start date	2005-04-19T02:34:49	2005-04-19T02:16:38			
[s] Observation end time (MET)	230275073.184000	230275309.72282			
Observation end date	2005-04-19T05:16:49	2005-04-19T05:21:49			
Read mode	TIMED	TIMED			

2.3 Aspect

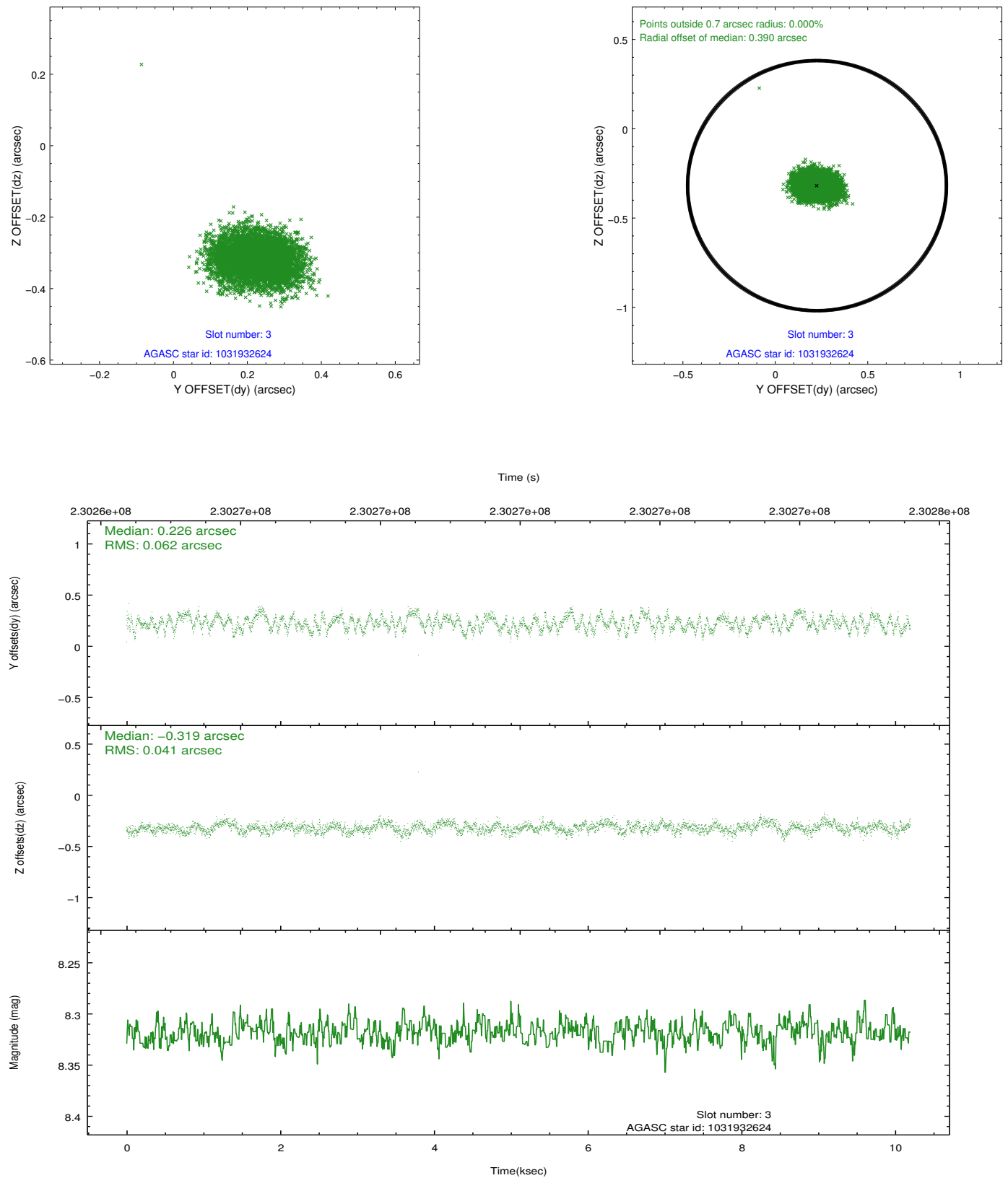


Slot Statistics

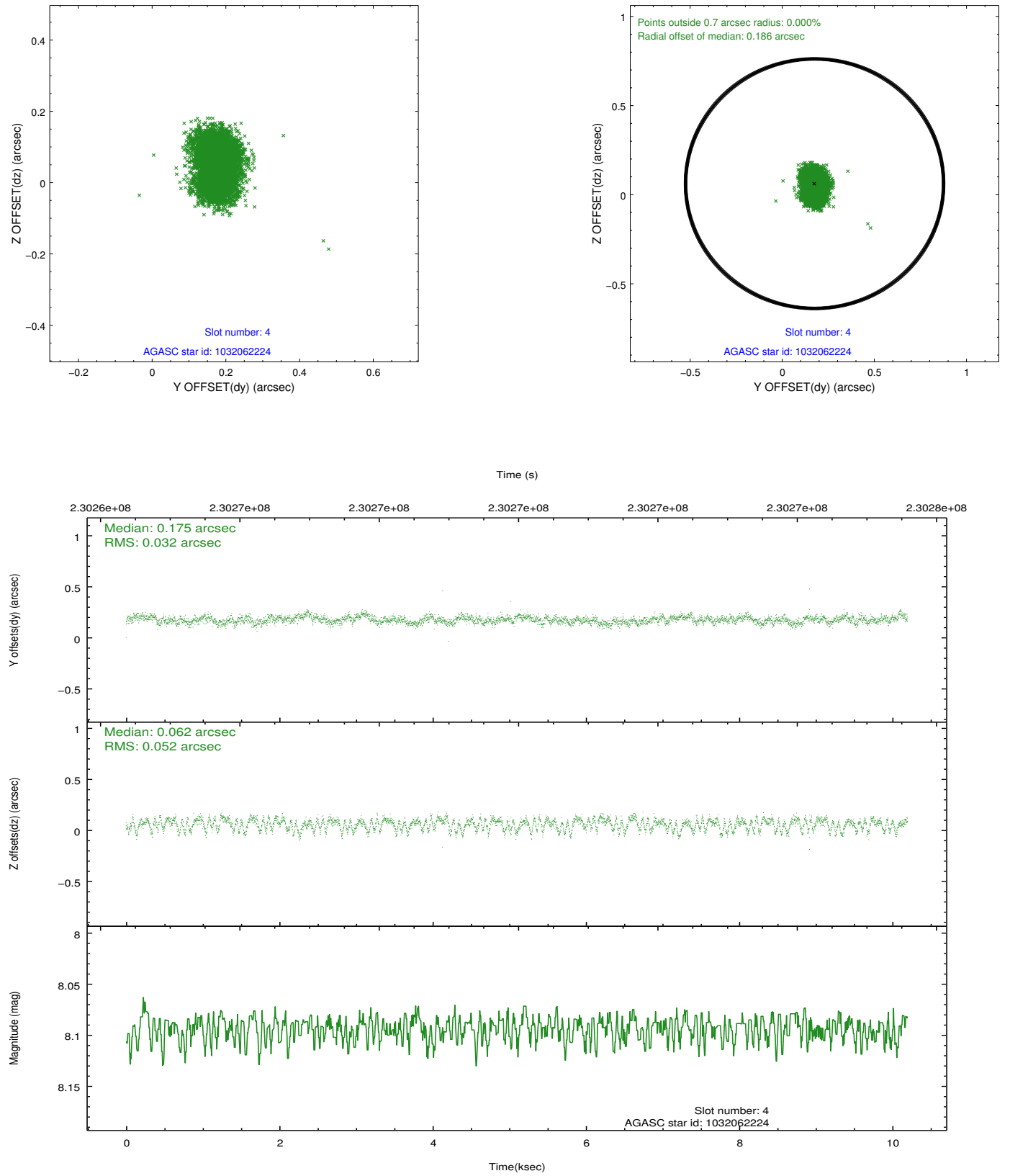
slot	status	id	mag	n_pts	med_dy	med_dz	dr1	dr2	ra	dec	mean_y	mean_z
0	FID	ACIS-I-1	7.25	2488	0.013	0.006	0.008	0.014	0.000000	0.000000	932.74	-833.32
1	FID	ACIS-I-5	7.23	2488	-0.171	0.029	0.006	0.011	0.000000	0.000000	-1815.27	1063.92
2	FID	ACIS-I-6	7.26	2488	0.067	0.035	0.007	0.012	0.000000	0.000000	397.76	1709.03
3	GUIDE	1031932624	8.32	4974	0.226	-0.319	0.080	0.126	257.431727	-40.221910	-2068.72	2080.29
4	GUIDE	1032062224	8.09	4976	0.175	0.062	0.065	0.105	258.732987	-40.317739	-1298.28	-1426.26
5	GUIDE	1032064496	7.24	4973	-0.129	0.118	0.065	0.110	259.271174	-39.429374	2197.63	-1894.30
6	GUIDE	1032064528	7.89	4975	-0.151	0.122	0.059	0.096	259.076580	-39.610595	1415.24	-1571.16
7	GUIDE	1032064856	9.21	4968	-0.114	0.018	0.096	0.150	258.958011	-40.551517	-1916.11	-2267.31

2.4 Star Slots

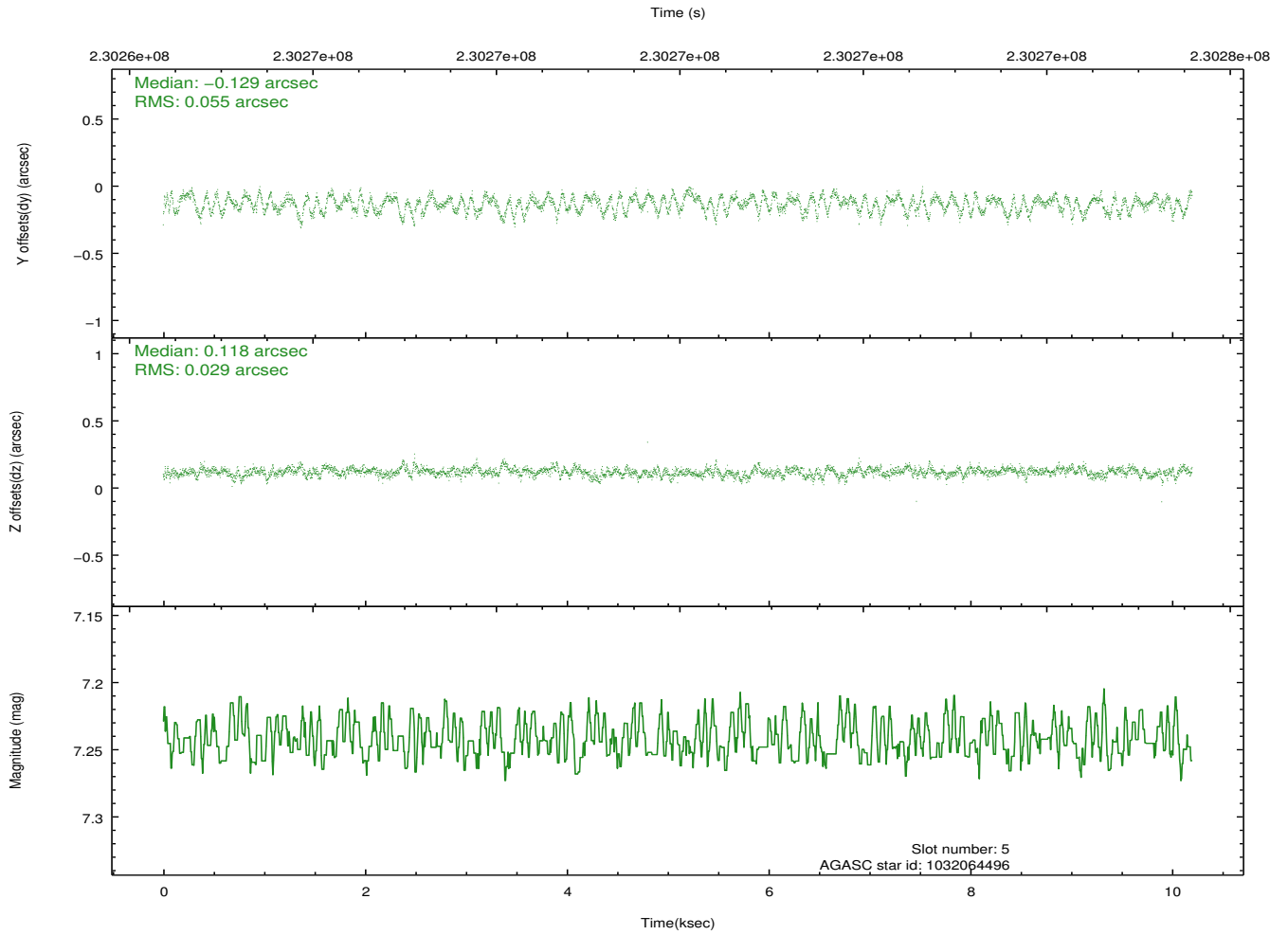
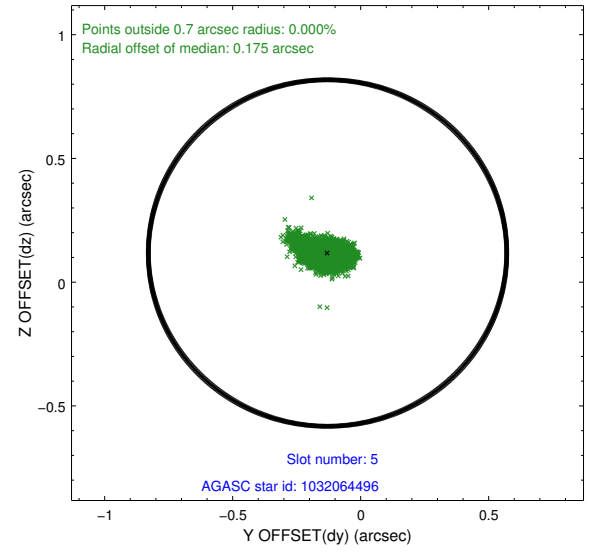
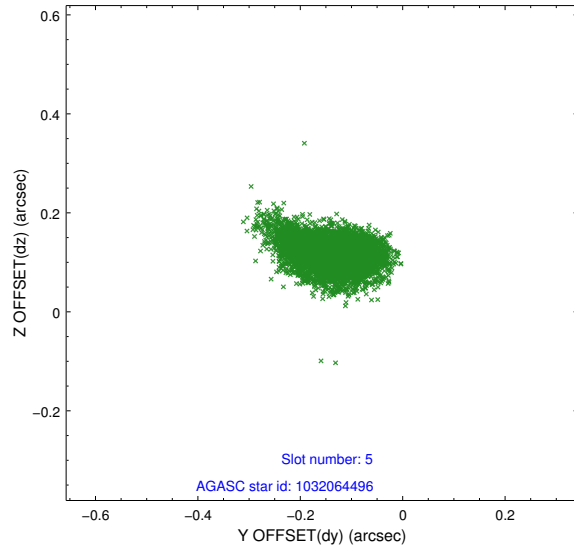
2.4.1 Slot 3



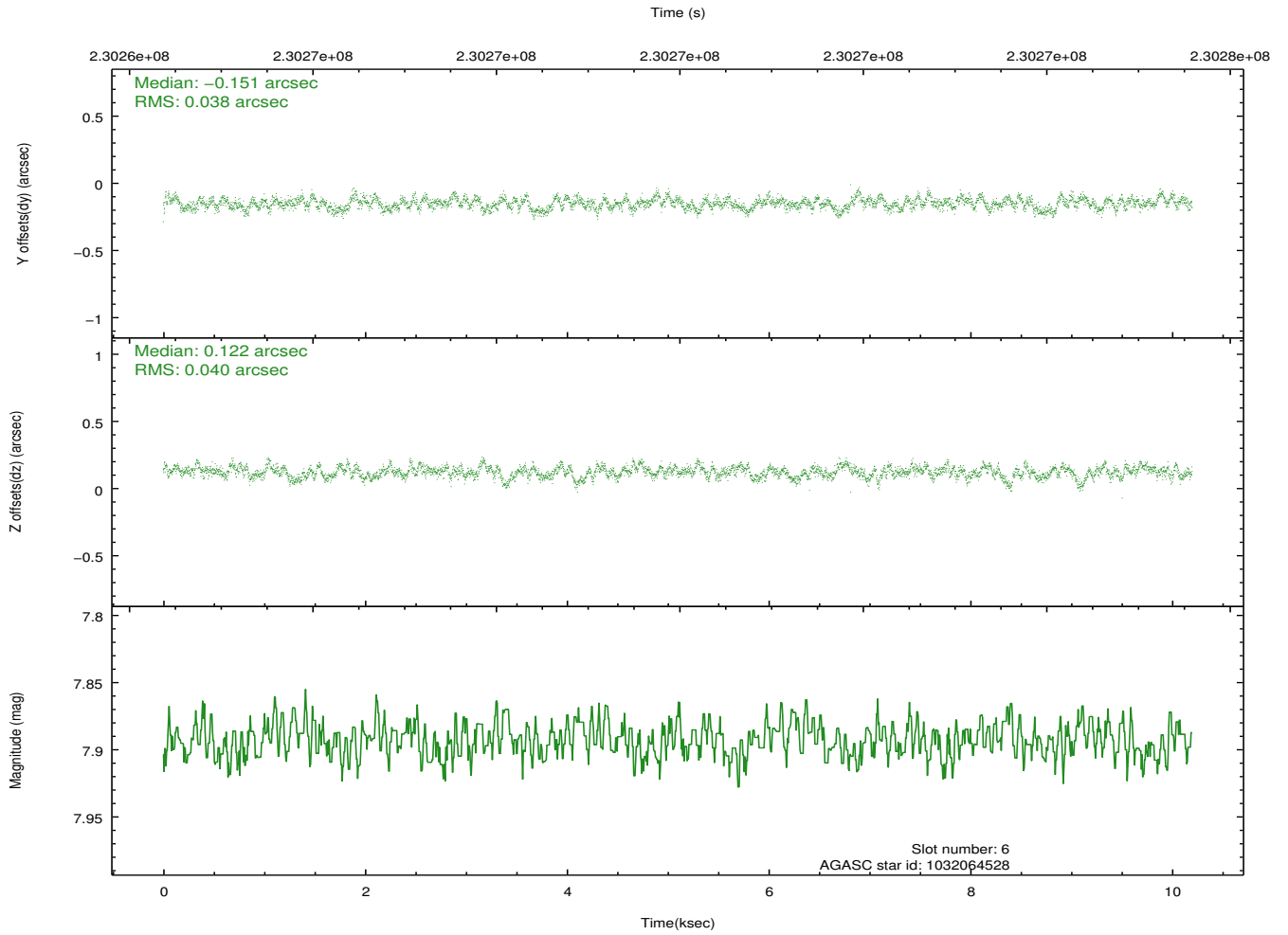
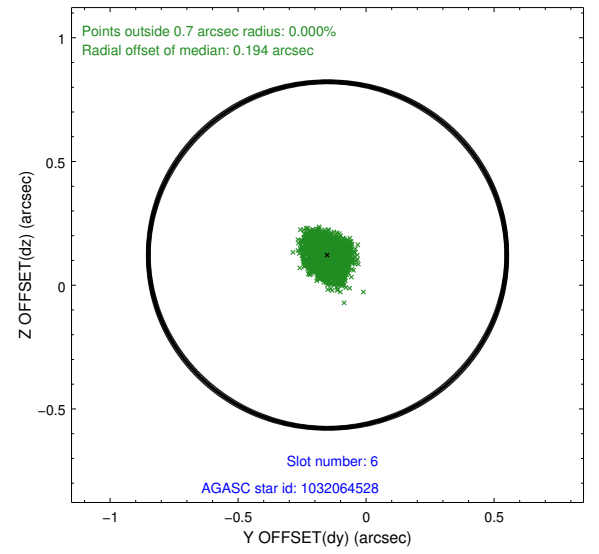
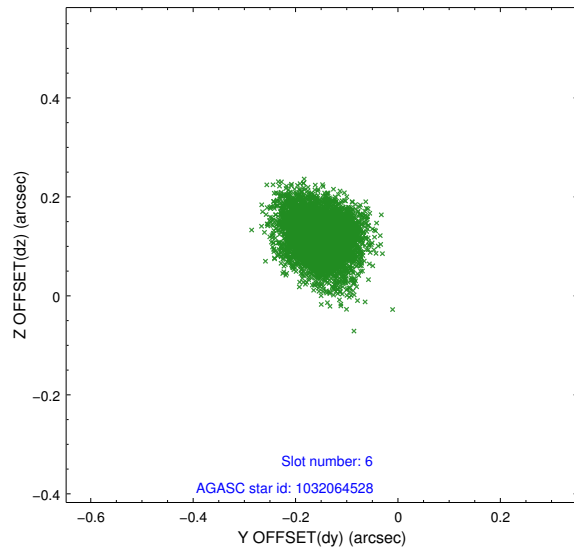
2.4.2 Slot 4



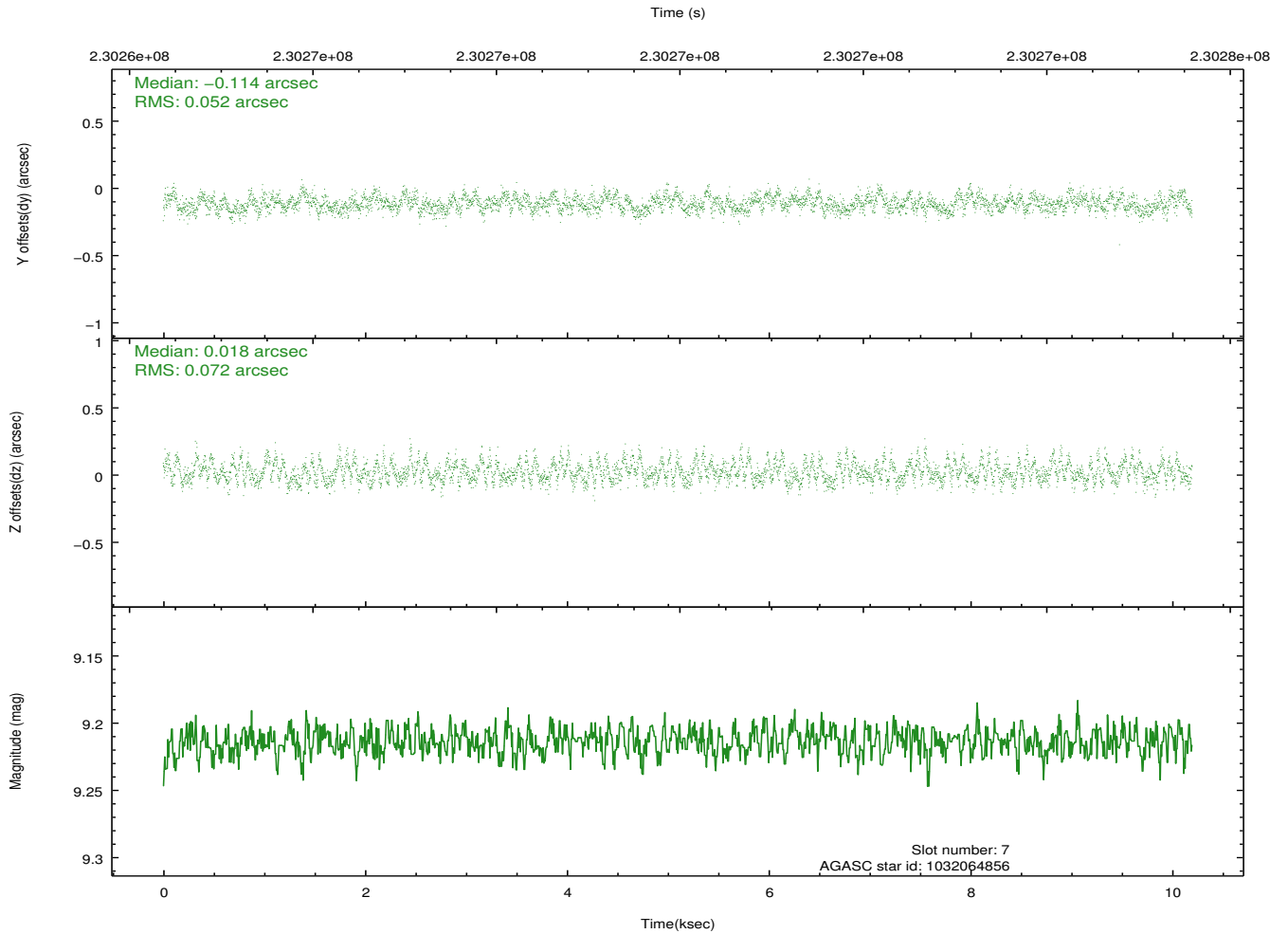
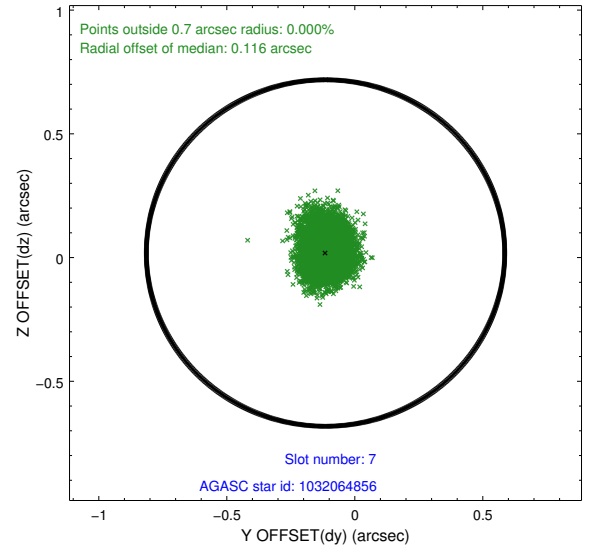
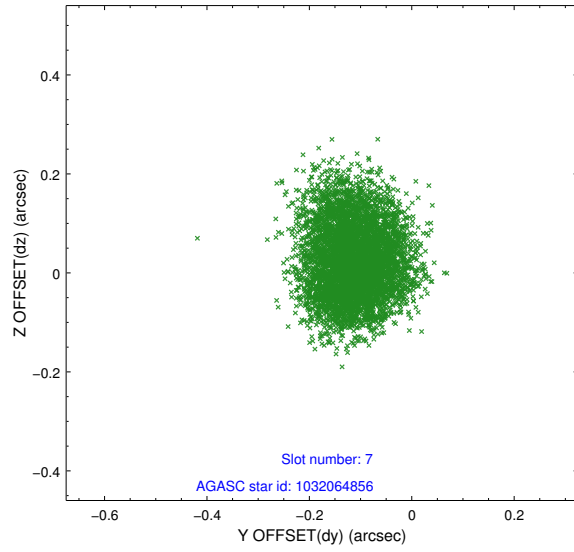
2.4.3 Slot 5



2.4.4 Slot 6

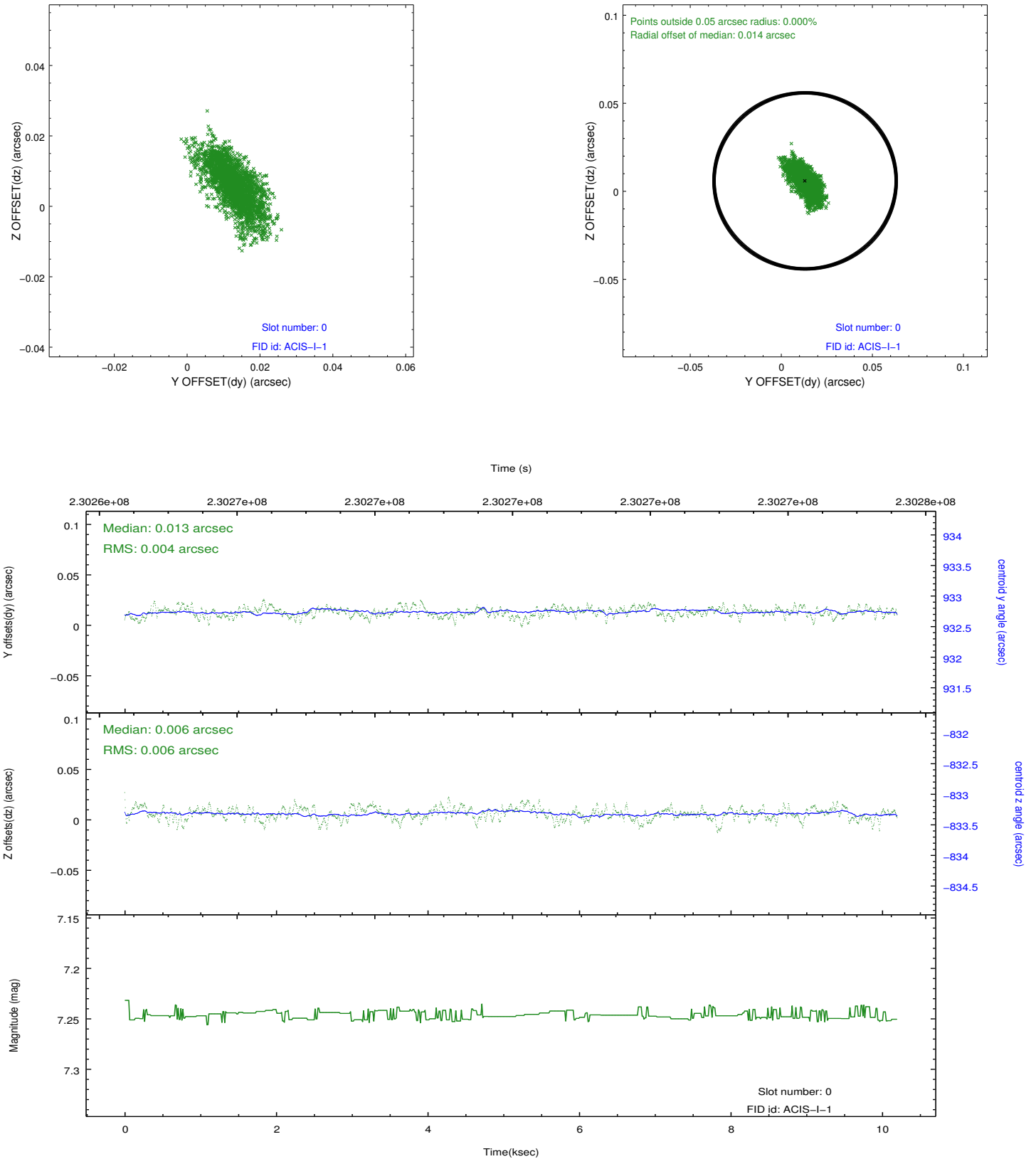


2.4.5 Slot 7

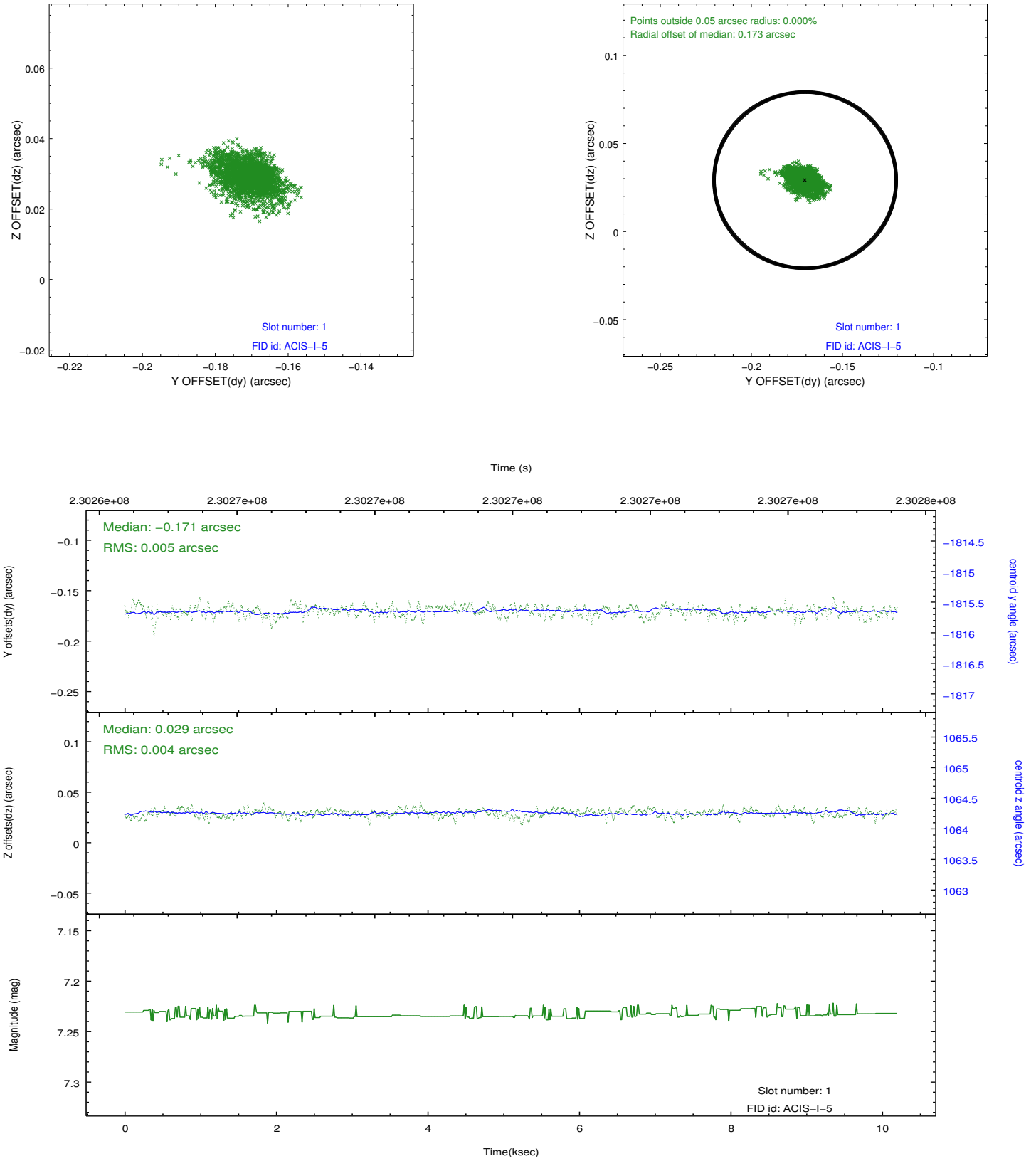


2.5 FID Slots

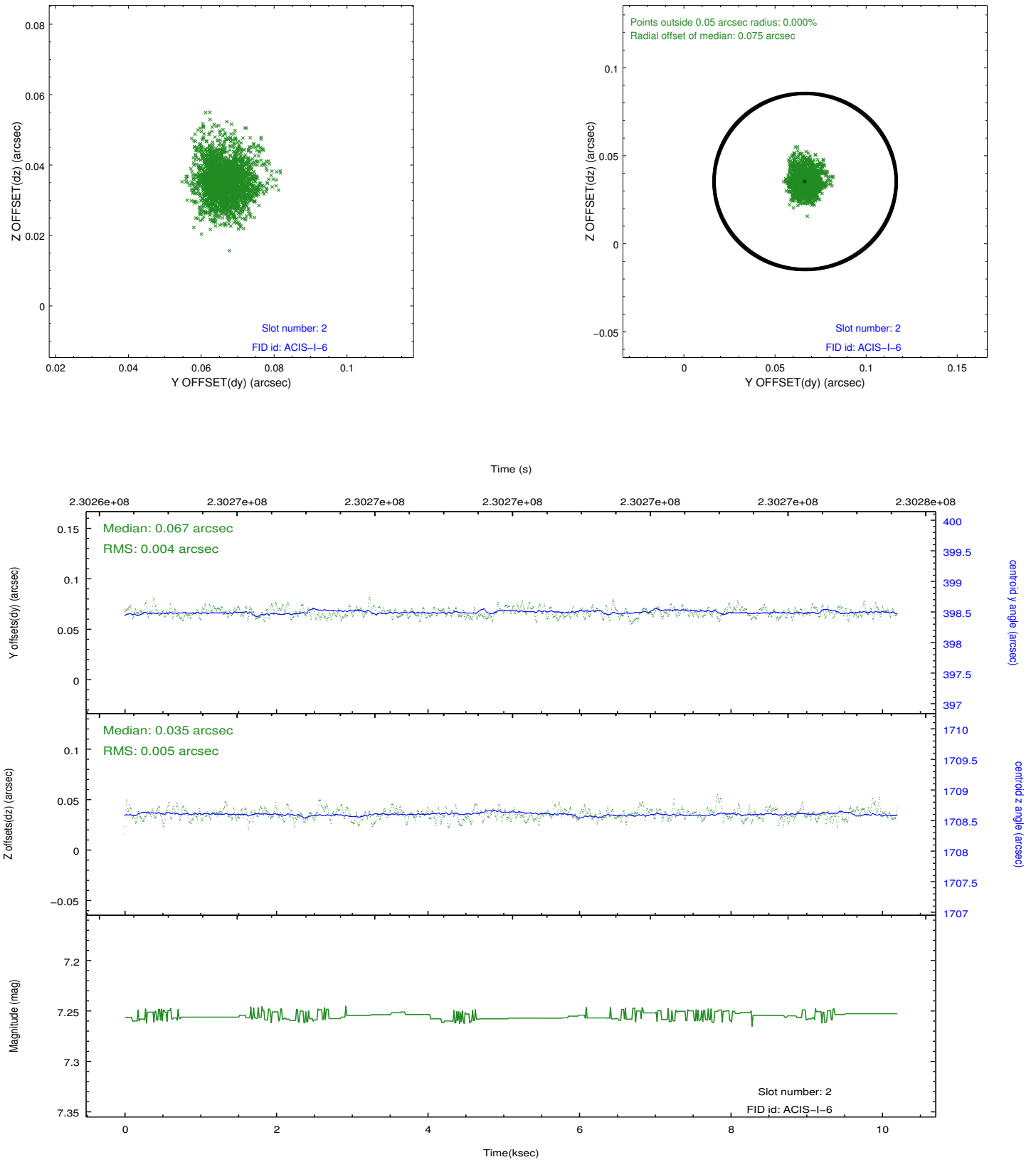
2.5.1 Slot 0



2.5.2 Slot 1



2.5.3 Slot 2



A Summary

A.1 Status

V&V Scientist	Jen Lauer
V&V Date (YYYY-MM-DD)	2013.01.15
V&V Edition	1
V&V Disposition and Status	OK
V&V Charge Time	9.766399

A.2 Comments

Roll preference met.