

# V&V Reference Report

## L2 ASCDS Version : 8.4.3

Observation 5545 - L2 Version 4  
Chandra X-Ray Center

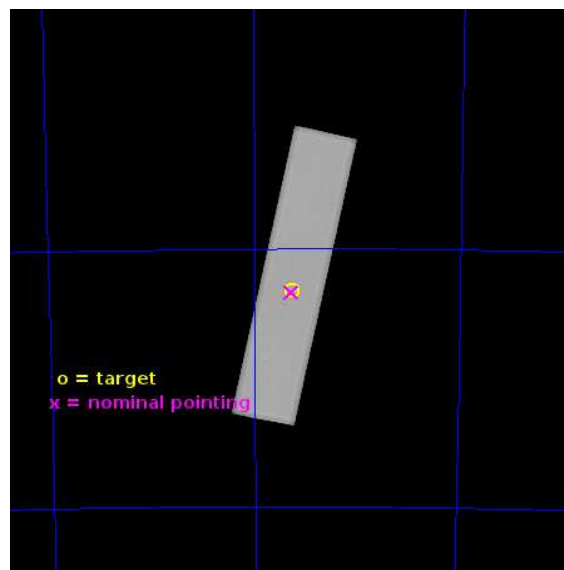
L2 Processing Date : Jun 28 2013

## Contents

<b>1</b>	<b>Front</b>	<b>2</b>
<b>2</b>	<b>OBI</b>	<b>3</b>
2.1	OBI . . . . .	3
2.1.1	Images . . . . .	3
2.1.2	Parameters . . . . .	4
2.1.3	Events . . . . .	4
2.2	Compared Parameters . . . . .	5
2.3	Aspect . . . . .	6
2.4	Star Slots . . . . .	9
2.4.1	Slot 3 . . . . .	9
2.4.2	Slot 4 . . . . .	10
2.4.3	Slot 5 . . . . .	11
2.4.4	Slot 6 . . . . .	12
2.4.5	Slot 7 . . . . .	13
2.5	FID Slots . . . . .	14
2.5.1	Slot 0 . . . . .	14
2.5.2	Slot 1 . . . . .	15
2.5.3	Slot 2 . . . . .	16
<b>A</b>	<b>Summary</b>	<b>17</b>
A.1	Status . . . . .	17
A.2	Comments . . . . .	17

# 1 Front

seq_num	500535	Sequence number
obs_id	5545	Observation id
title	Search for Sub-Millisecond Pulsars in 47 Tuc	Proposal title
observer	Prof. Robert Rutledge	Principal investigator
object	47 Tuc	Source name
ra_targ	6.021667	Observer's specified target RA [deg]
dec_targ	-72.080528	Observer's specified target Dec [deg]
ra_nom	6.0243981648281	Nominal RA [deg]
dec_nom	-72.085135843289	Nominal Dec [deg]
roll_nom	281.88420288591	Nominal Roll [deg]
revision	4	Processing version of data
ontime	51871.408641338	[s]
livetime	51643.757160756	Ontime multiplied by DTCOR
l2events	2282980	Number of level 2 events

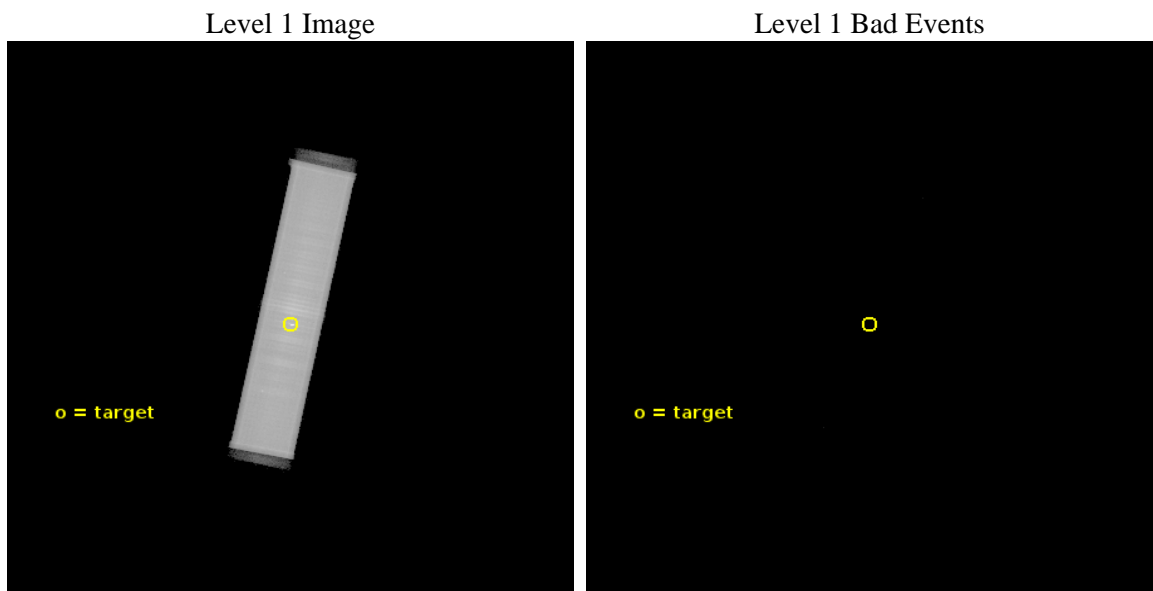




## 2 OBI

### 2.1 OBI

#### 2.1.1 Images



### 2.1.2 Parameters

obi_num	1	Obi number	sched_exp_time	51282.244000	[s] Scheduled observation exposure time
ascdsver	10	Processing system revision	ontime	51871.408651352	[s]
caldsver	4.5.7	&#160	l1events	3291972	Number of level 1 events
date	2013-06-29T02:26:29	Date and time of file creation			
revision	4	Processing version of data			

### 2.1.3 Events

Level 1 Events

	segment 1	segment 2	segment 3
level 1 events	3852	32881128	
rejected events	73	58518	0
rejected %	1%	1%	0%

## 2.2 Compared Parameters

Parameter	Planned	Actual
Instrument	HRC	HRC
Detector	HRC-S	HRC-S
Grating	NONE	NONE
Data mode	OBSERVING	OBSERVING
Observation mode	POINTING	POINTING
[deg] Pointing RA	5.959019	6.024398164828092
[deg] Pointing Dec	-72.064821	-72.08513584328949
[deg] Pointing Roll	281.754660	281.8842028859077
[mm] SIM focus pos	-1.533336	-1.526339935833849
[mm] SIM defocus	7.710433287538843e-07	0.006996703570447904
[mm] SIM translation stage pos	250.455976	250.466033080201
[mm] SIM translation stage offset	0	-0.01005468664627074
[s] Observation start time (MET)	251702509.184000	251701377.70578
Observation start date	2005-12-23T05:20:45	2005-12-23T05:02:57
[s] Observation end time (MET)	251753791.184000	251755681.1833
Observation end date	2005-12-23T19:35:27	2005-12-23T20:08:01

Parameter	Planned	Actual
Obspar format version number	7	7
Obspar file type	PREDICTED	ACTUAL
Obspar update status	NONE	UPDATED

## 2.3 Aspect

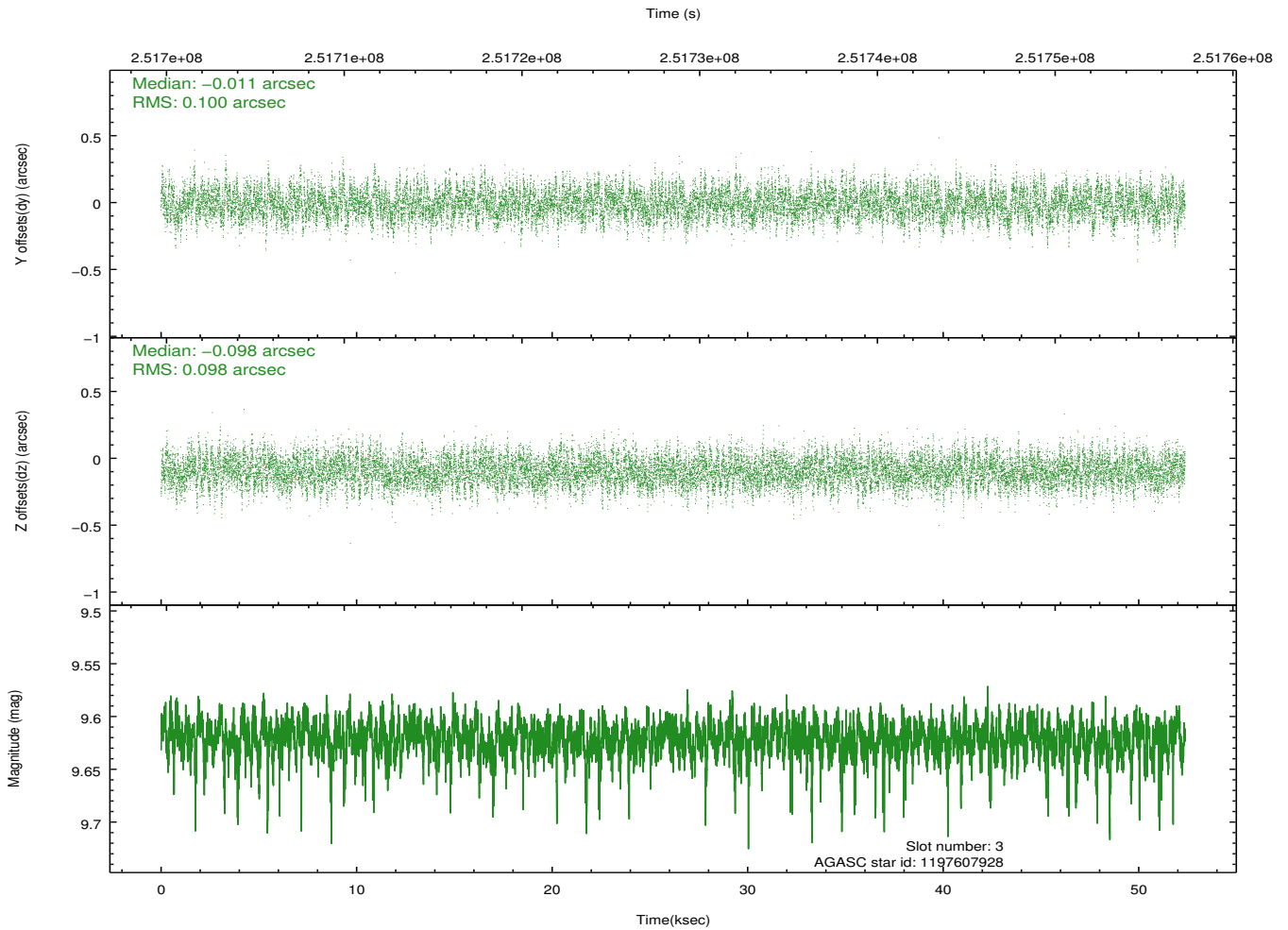
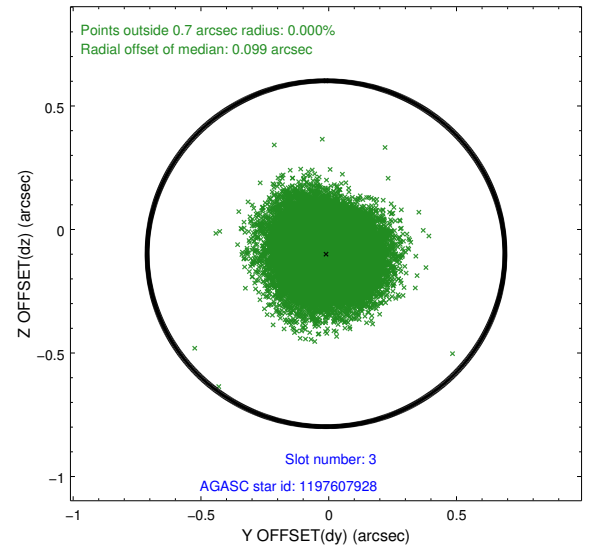
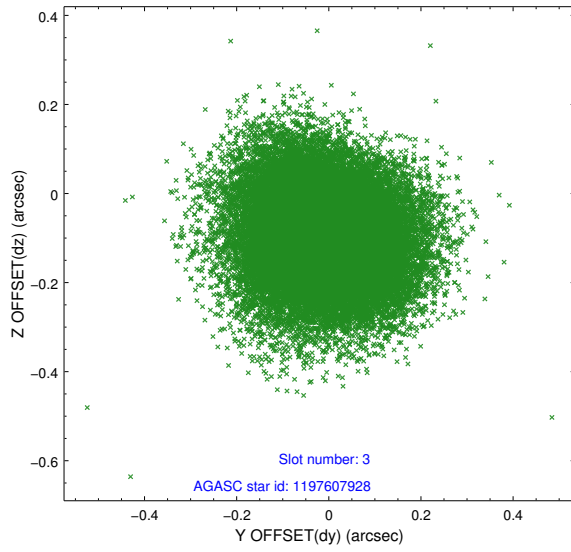


### Slot Statistics

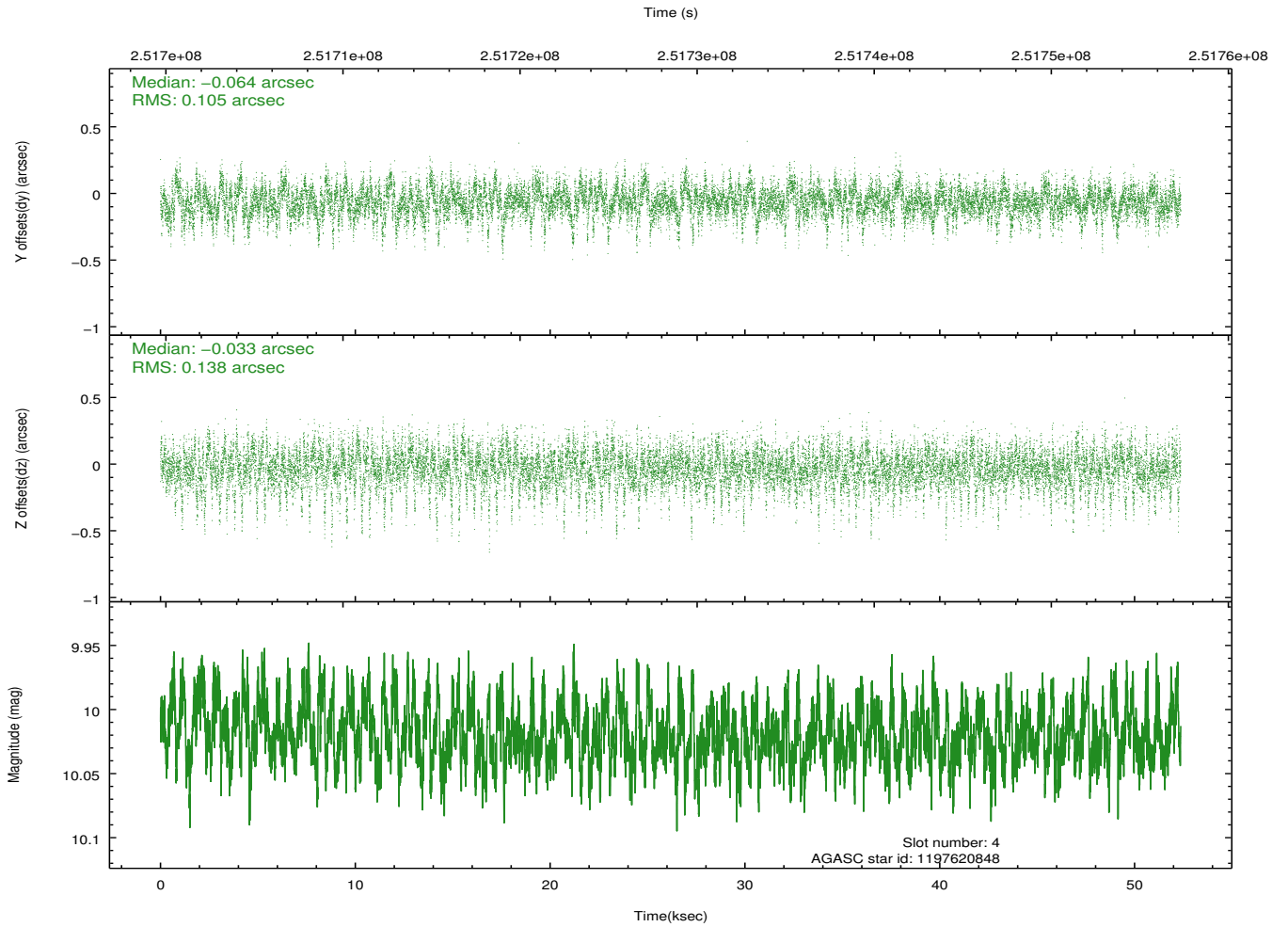
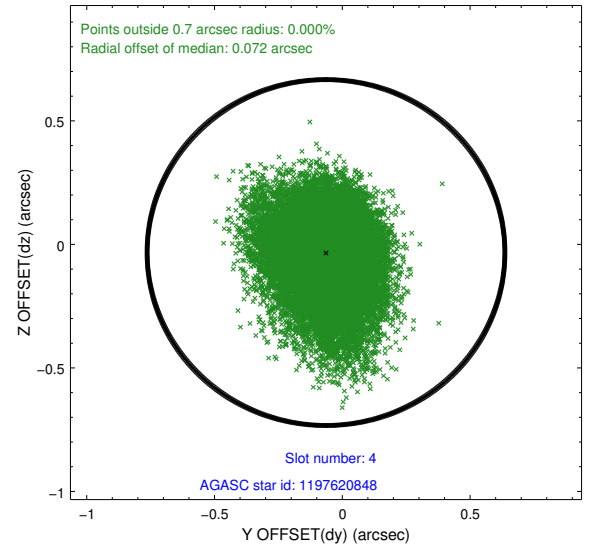
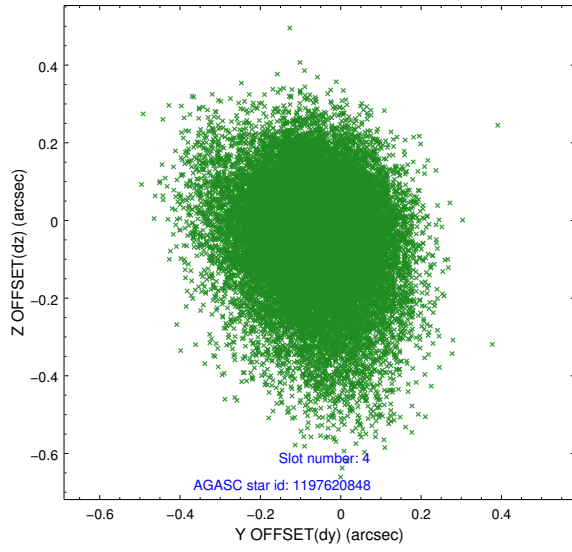
slot	status	id	mag	n_pts	med_dy	med_dz	dr1	dr2	ra	dec	mean_y	mean_z
0	FID	HRC-S-1	7.02	12773	0.132	-0.140	0.018	0.064	0.000000	0.000000	-1163.99	-460.38
1	FID	HRC-S-2	7.02	12773	0.139	-0.105	0.008	0.014	0.000000	0.000000	1235.58	-453.03
2	FID	HRC-S-3	7.04	12774	0.120	-0.058	0.018	0.072	0.000000	0.000000	-1166.62	569.20
3	GUIDE	1197607928	9.62	25506	-0.011	-0.098	0.150	0.238	7.837743	-72.165759	809.63	1947.32
4	GUIDE	1197620848	10.02	25482	-0.064	-0.033	0.177	0.316	3.913465	-71.739620	-1577.22	-2028.23
5	GUIDE	1197617752	10.27	25520	-0.032	0.210	0.201	0.325	4.480632	-72.284129	463.26	-1749.99
6	GUIDE	1197621088	9.95	25511	-0.030	-0.042	0.162	0.273	3.823480	-72.180366	-29.98	-2394.97
7	GUIDE	1198000776	9.88	25519	0.149	-0.030	0.188	0.338	4.972441	-72.805451	2405.88	-1572.59

## 2.4 Star Slots

### 2.4.1 Slot 3

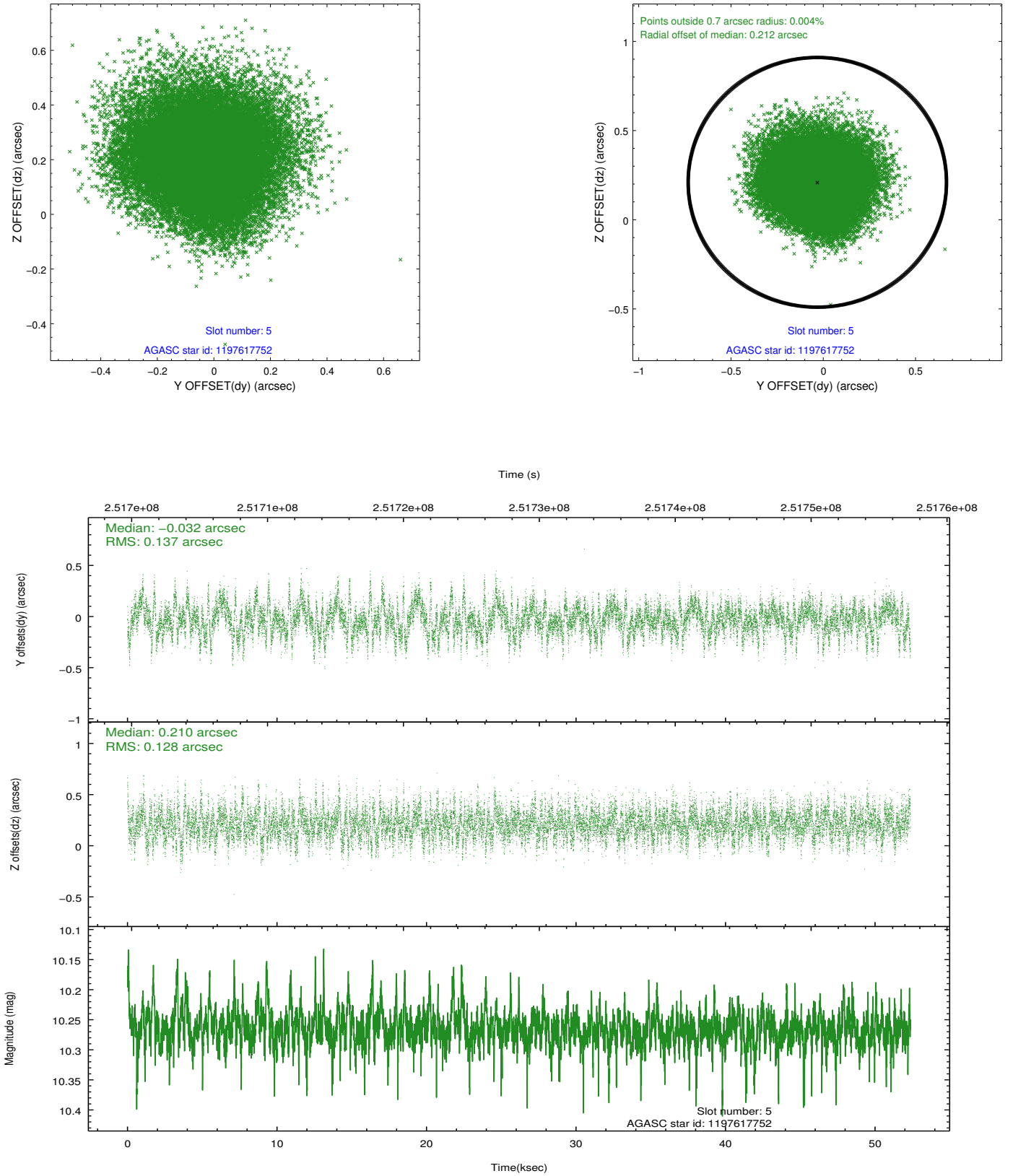


## 2.4.2 Slot 4

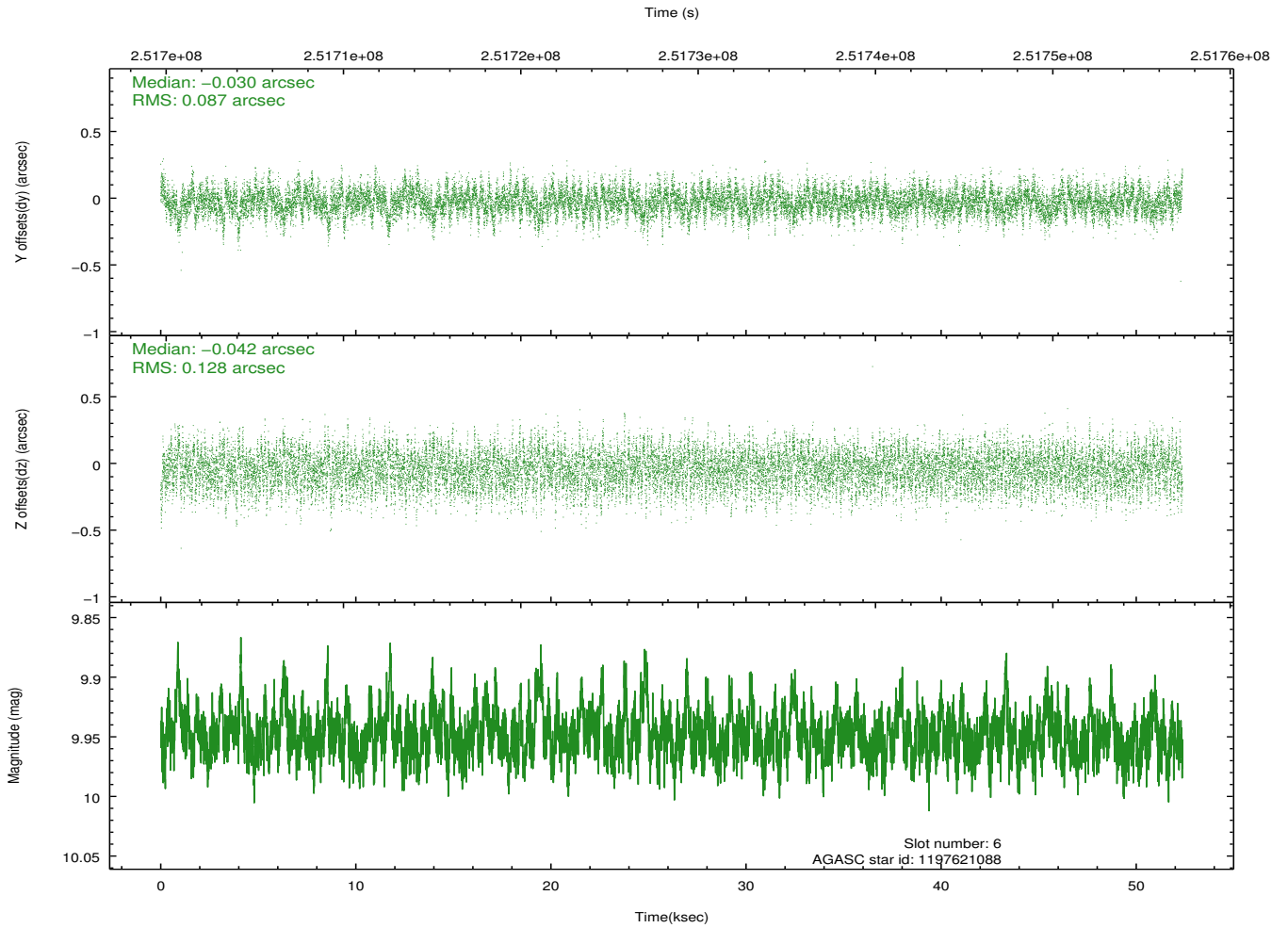
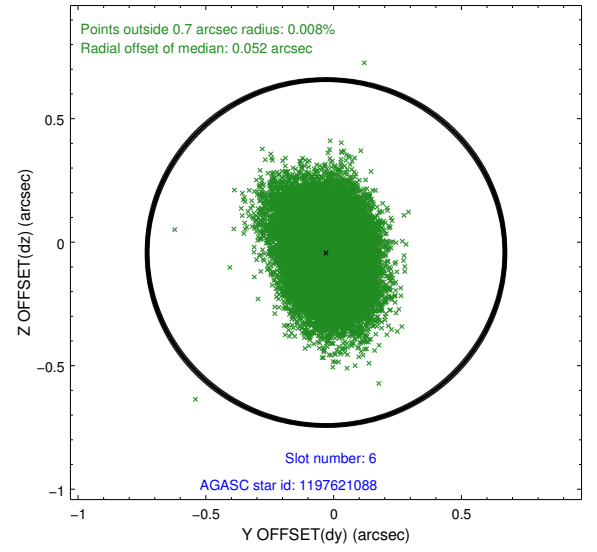
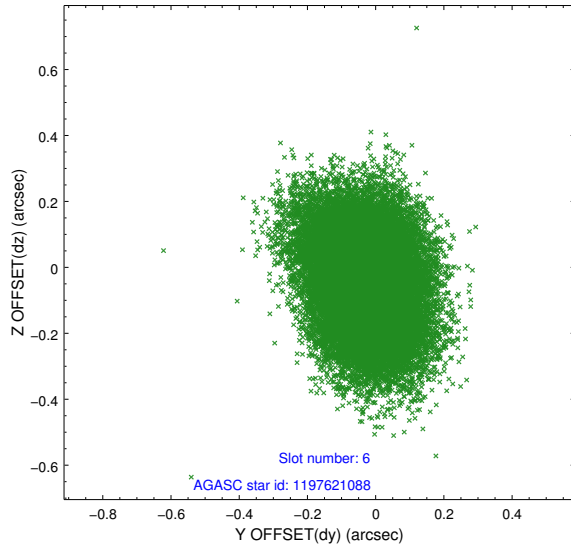




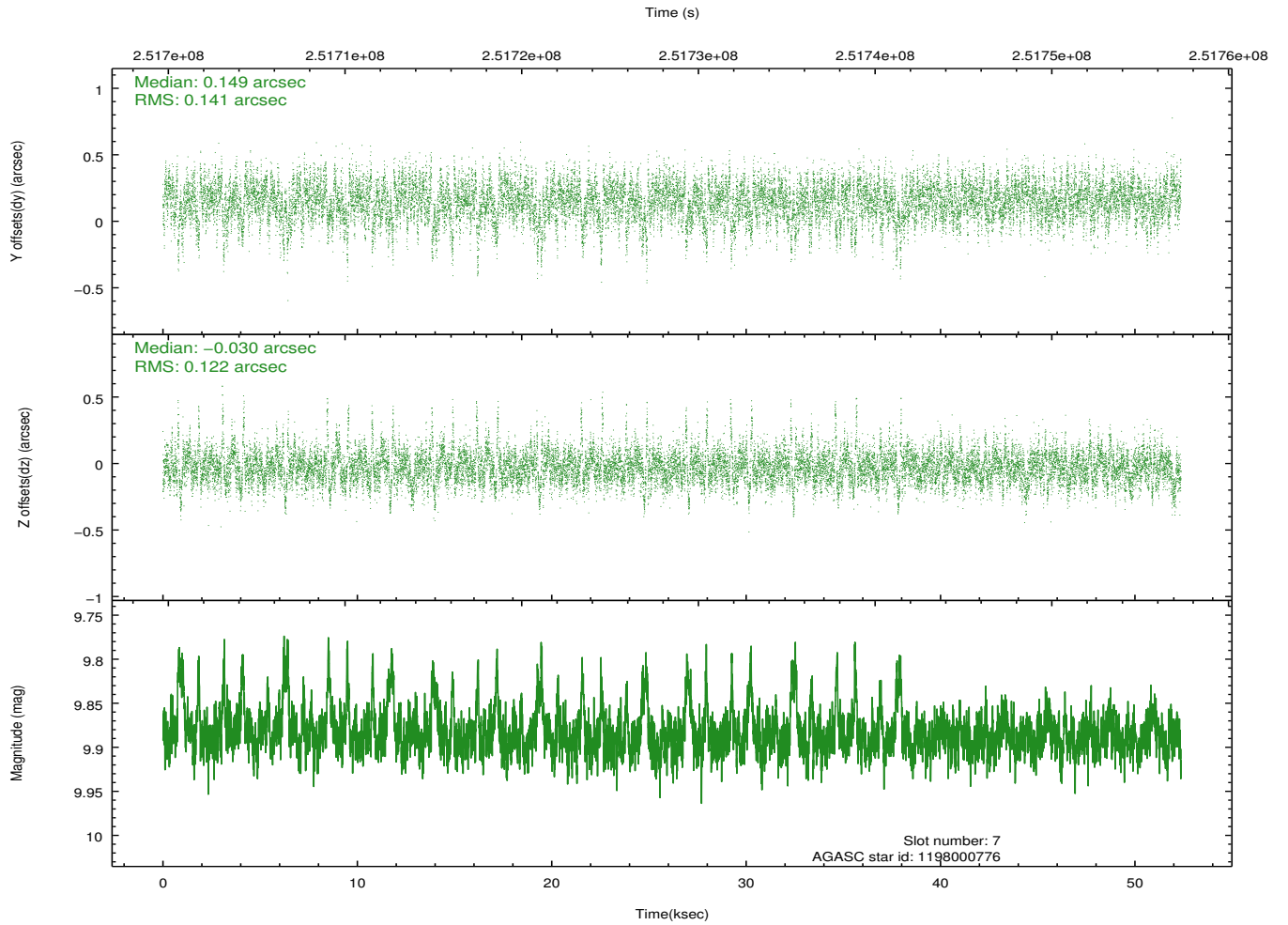
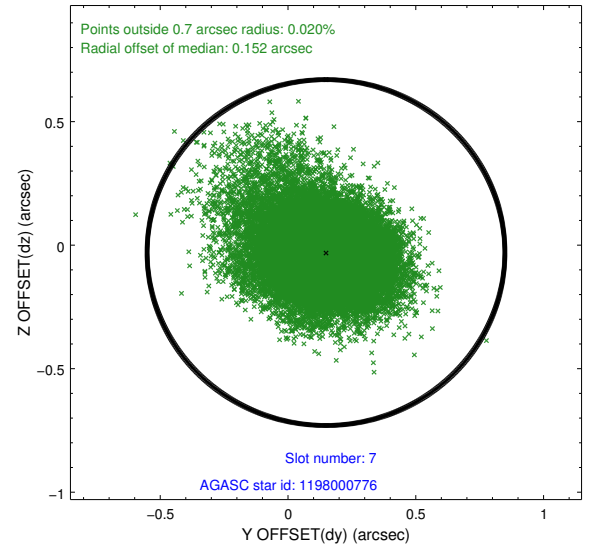
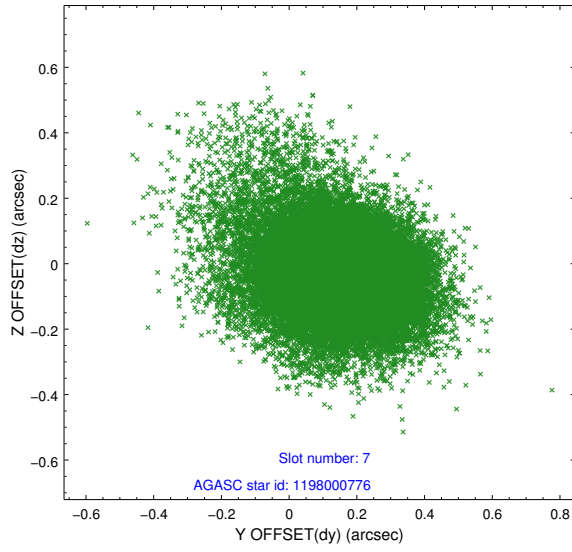
### 2.4.3 Slot 5



## 2.4.4 Slot 6

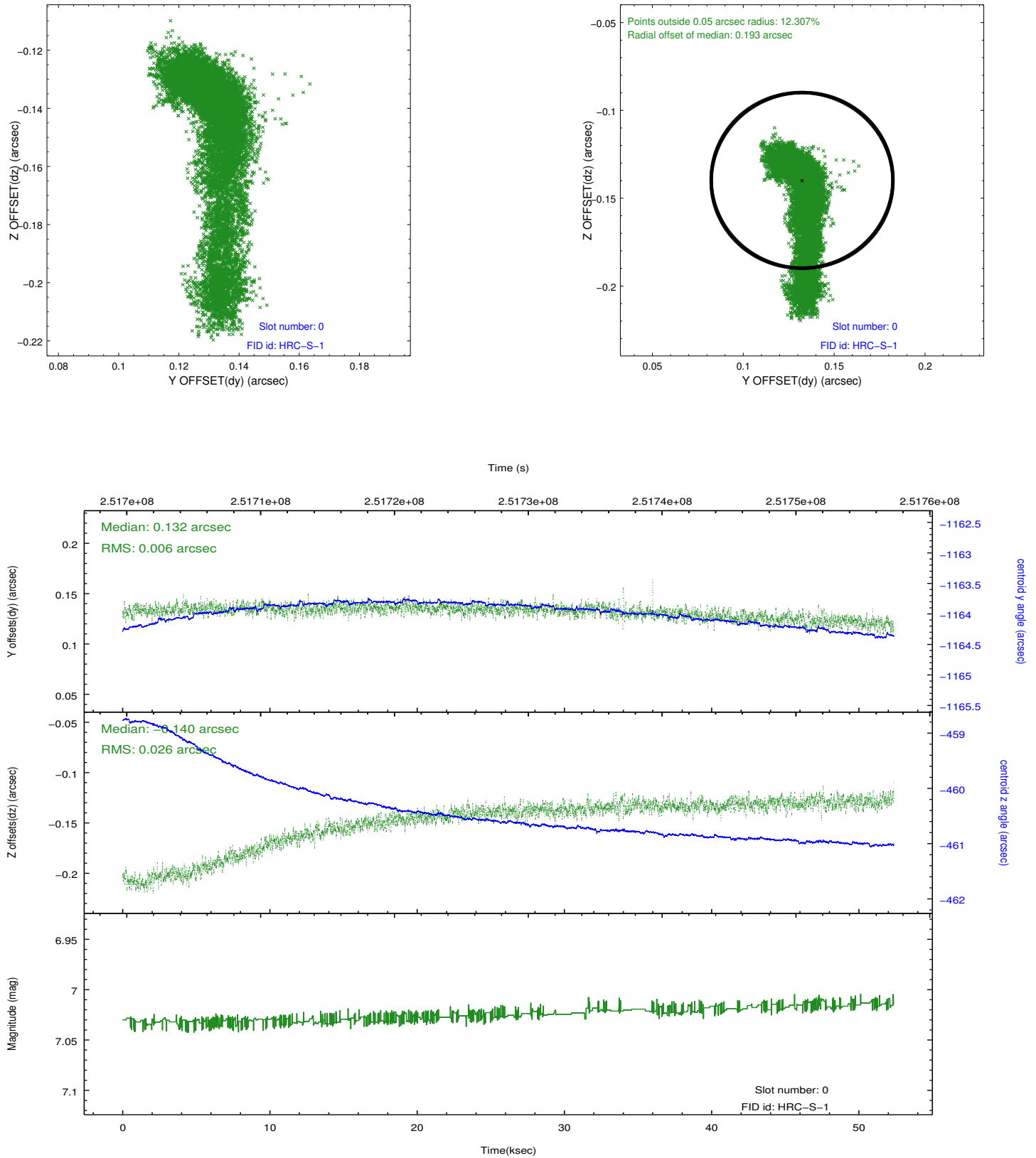


## 2.4.5 Slot 7

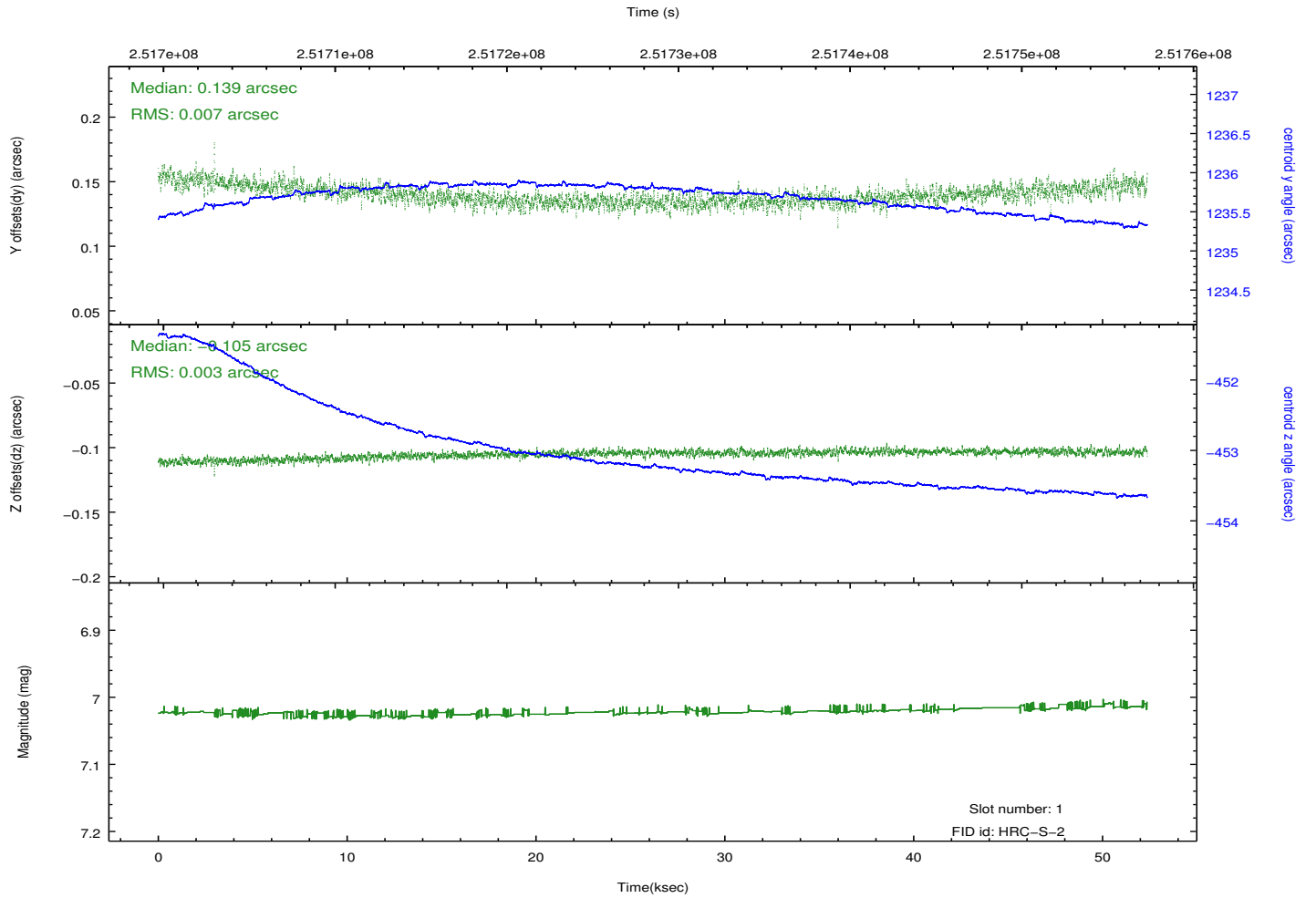
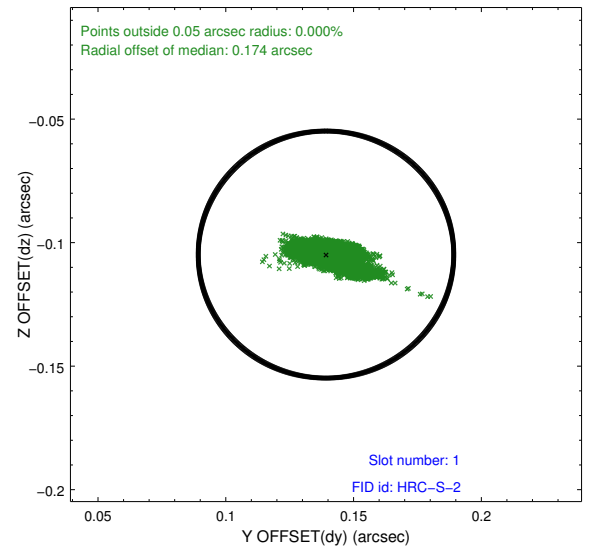
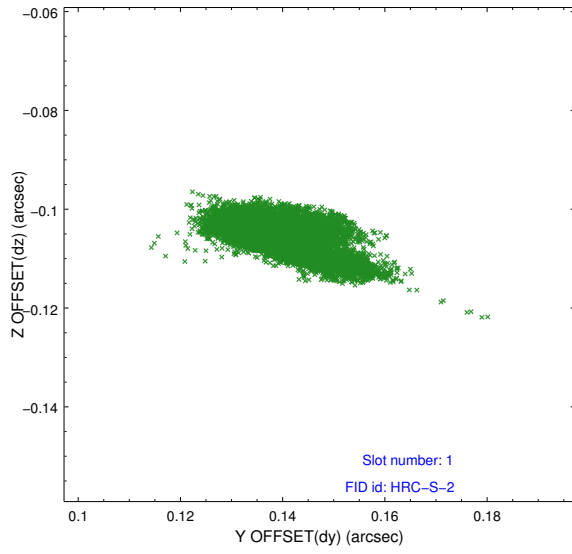


## 2.5 FID Slots

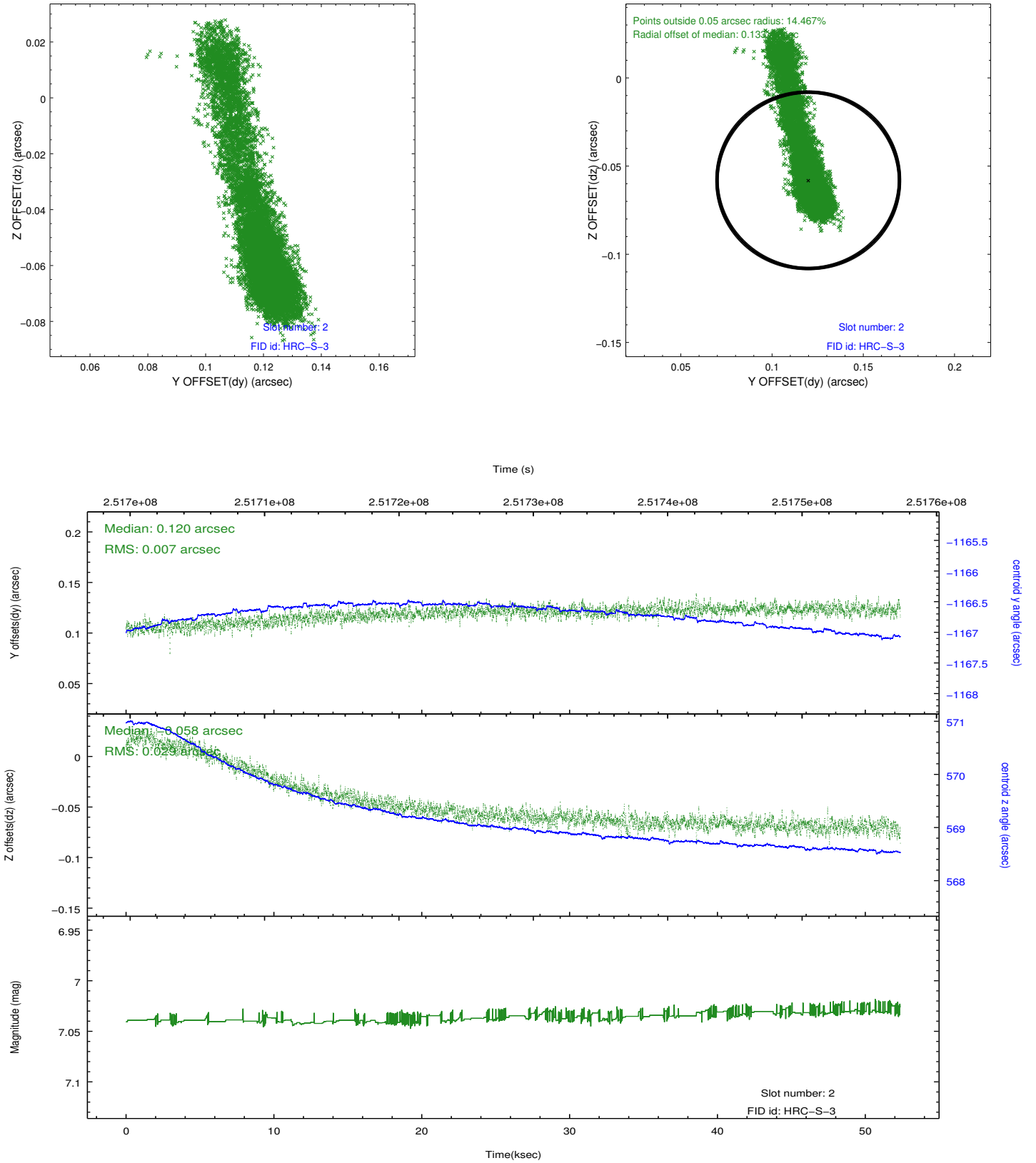
### 2.5.1 Slot 0



## 2.5.2 Slot 1



### 2.5.3 Slot 2



## A Summary

### A.1 Status

V&V Scientist	Beth Sundheim
V&V Date (YYYY-MM-DD)	2013.07.01
V&V Edition	1
V&V Disposition and Status	OK
V&V Charge Time	51.8714

### A.2 Comments