

# V&V Reference Report

## L2 ASCDS Version : 8.5.1.1

Observation 5526 - L2 Version 4  
Chandra X-Ray Center

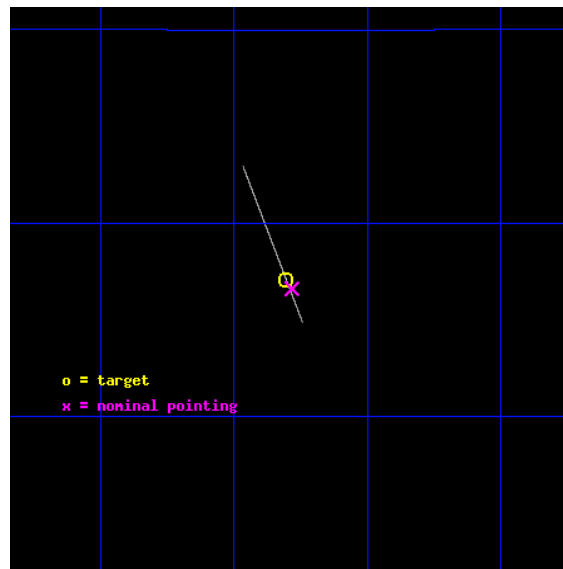
L2 Processing Date : Dec 25 2012

## Contents

<b>1</b>	<b>Front</b>	<b>2</b>
<b>2</b>	<b>OBI</b>	<b>3</b>
2.1	OBI . . . . .	3
2.1.1	Images . . . . .	3
2.1.2	Bias . . . . .	3
2.1.3	Parameters . . . . .	4
2.1.4	Events . . . . .	4
2.2	Compared Parameters . . . . .	5
2.3	Aspect . . . . .	6
2.4	Star Slots . . . . .	9
2.4.1	Slot 3 . . . . .	9
2.4.2	Slot 4 . . . . .	10
2.4.3	Slot 5 . . . . .	11
2.4.4	Slot 6 . . . . .	12
2.4.5	Slot 7 . . . . .	13
2.5	FID Slots . . . . .	14
2.5.1	Slot 0 . . . . .	14
2.5.2	Slot 1 . . . . .	15
2.5.3	Slot 2 . . . . .	16
<b>A</b>	<b>Summary</b>	<b>17</b>
A.1	Status . . . . .	17
A.2	Comments . . . . .	17

# 1 Front

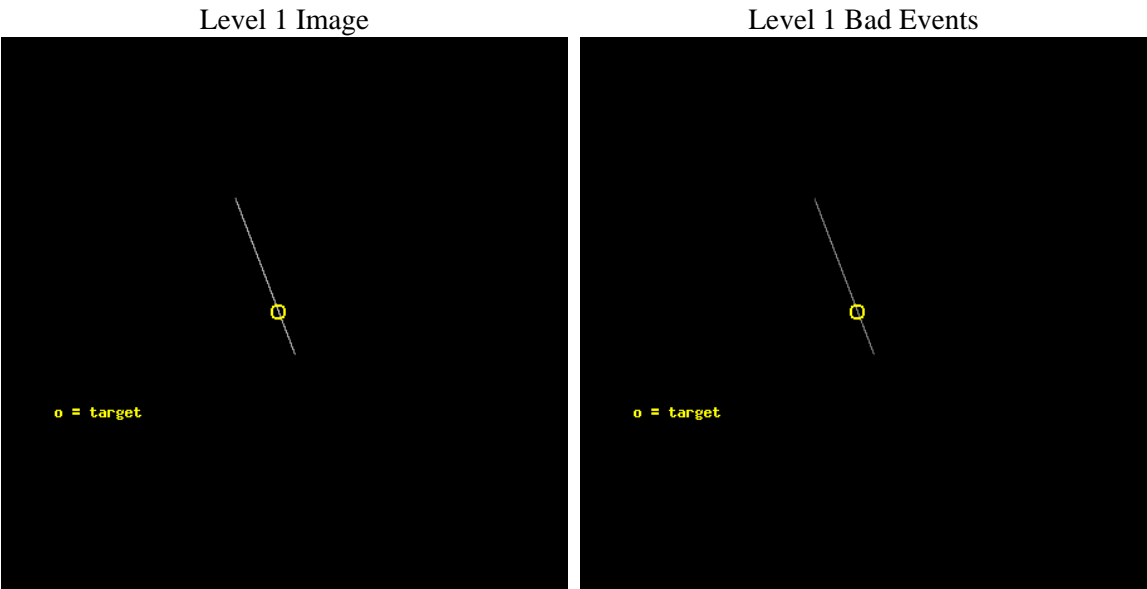
seq_num	500520	Sequence number
obs_id	5526	Observation id
title	Timing the Enigmatic Nearby Neutron Star RX J1308.8+2127	Proposal
observer	Prof. David Kaplan	Principal investigator
object	RX J1308.8+2127	Source name
ra_targ	197.20125	Observer's specified target RA [deg]
dec_targ	21.451889	Observer's specified target Dec [deg]
ra_nom	197.19584255746	Nominal RA [deg]
dec_nom	21.443634769993	Nominal Dec [deg]
roll_nom	248.85857707544	Nominal Roll [deg]
revision	4	Processing version of data
ontime	15187.5	Sum of GTIs [s]
livetime	15128.173828125	Livetime [s]
ontime7	15187.5	Sum of GTIs [s]
l2events	70456	Number of level 2 events



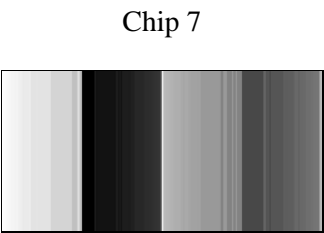
2 OBI

2.1 OBI

2.1.1 Images



2.1.2 Bias



### 2.1.3 Parameters

obi_num	0	Obi number	sched_exp_time	15000.000000	[s] Scheduled observation exposure time
ascdsver	8.5.1.1	Processing system revision	ontime	15187.5	Sum of GTIs [s]
caldsver	4.5.5	&#160	ontime7	15187.5	Sum of GTIs [s]
date	2012-12-26T00:06:43	Date and time of file creation	l1events	92362	Number of level 1 events
revision	4	Processing version of data			

### 2.1.4 Events

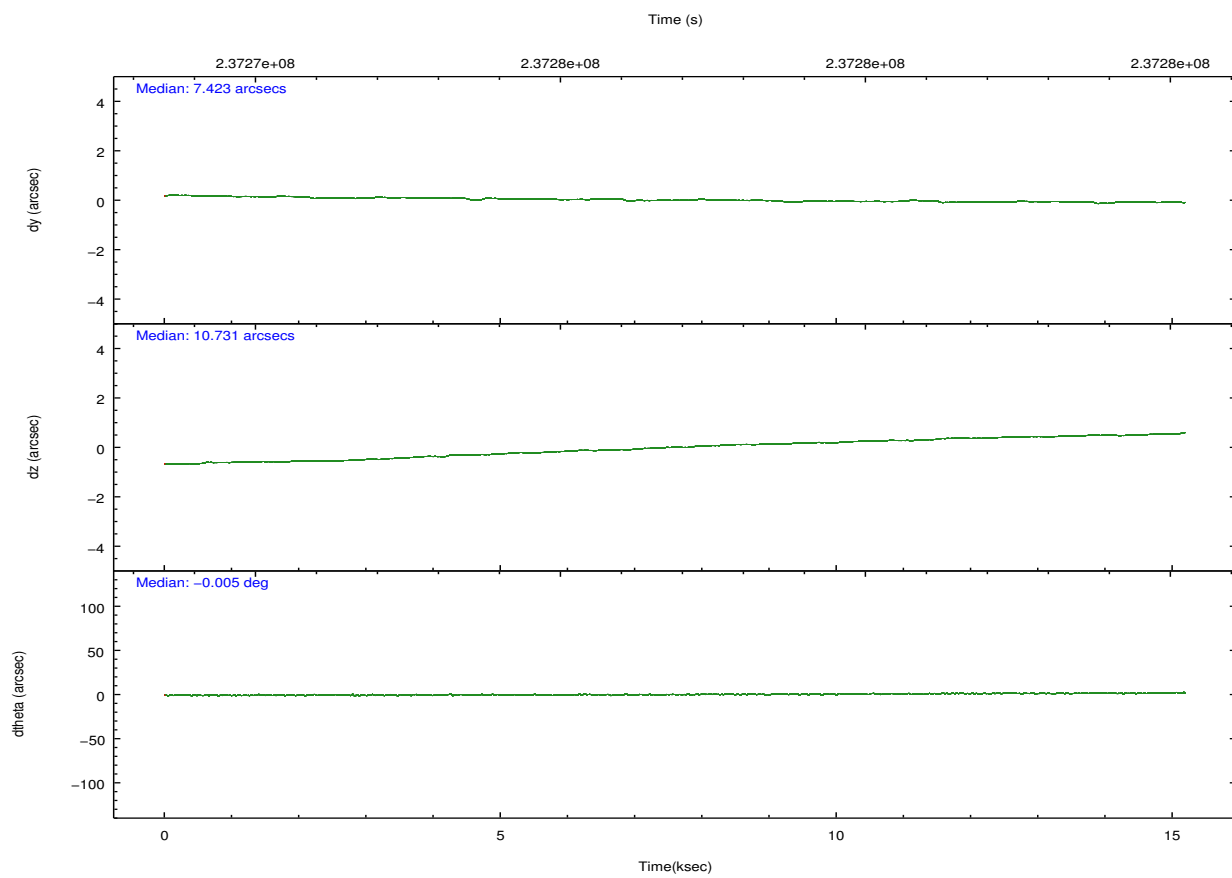
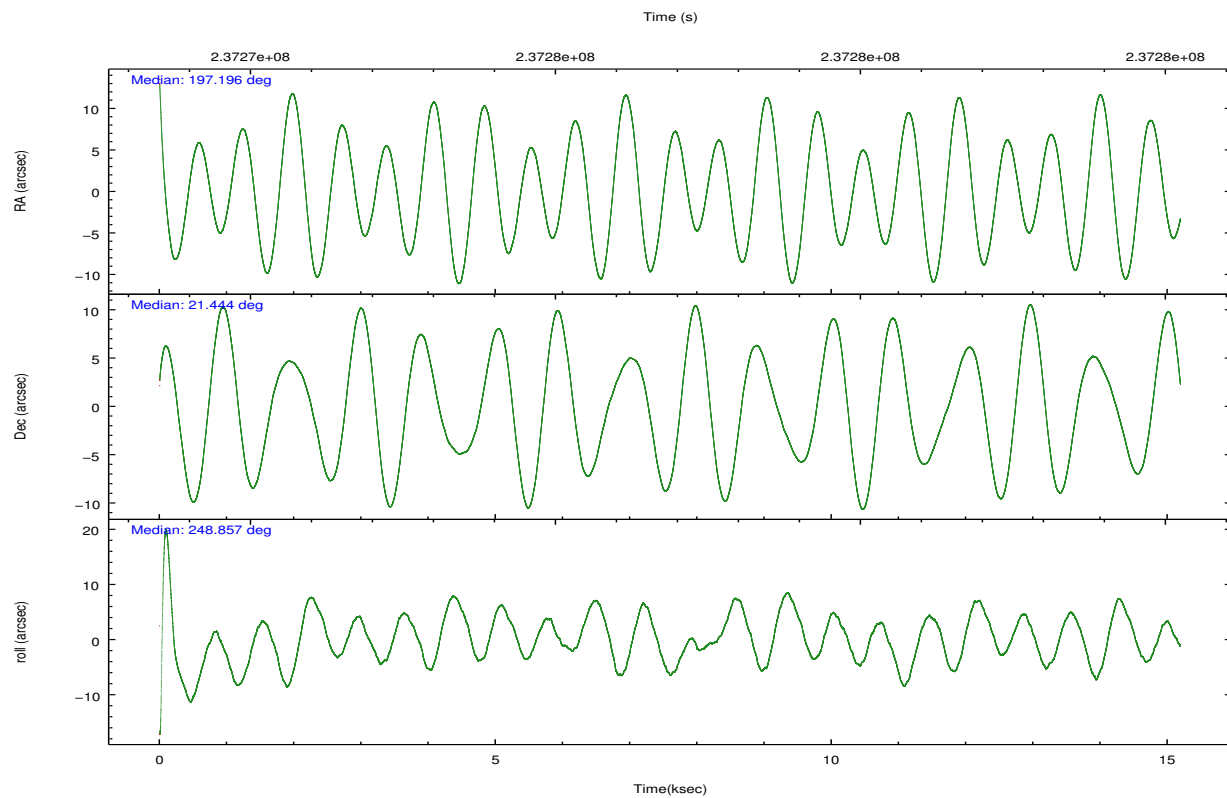
	<b>ccd 7</b>
level 1 events	92362
rejected events	18601
rejected %	20%

	<b>ccd 7</b>
grade 0 events	10513
	11%
grade 1 events	187
	0%
grade 2 events	19031
	20%
grade 3 events	5589
	6%
grade 4 events	5694
	6%
grade 5 events	14482
	15%
grade 6 events	36866
	39%
grade 7 events	0
	0%

## 2.2 Compared Parameters

Parameter	Planned	Actual	Parameter	Planned	Actual
Instrument	ACIS	ACIS	Obspar format version number	7	7
Detector	ACIS-7	ACIS-7	Obspar file type	PREDICTED	ACTUAL
Grating	NONE	NONE	Obspar update status	NONE	UPDATED
Data mode	CC33_FAINT	CC33_FAINT	Number of optional ACIS chips dropped	0	0
Observation mode	POINTING	POINTING	On-chip summing requested	N	N
[deg] Pointing RA	197.190970	197.1958425574554	Subarray requested	NONE	NONE
[deg] Pointing Dec	21.470467	21.44363476999298	Alternating exposures requested	N	N
[deg] Pointing Roll	248.703766	248.8585770754389	[s] Primary exposure time	0.000000	0
[mm] SIM focus pos	-0.684267	-0.6828225247311905			
[mm] SIM defocus	0	0.001444936568705701			
[mm] SIM translation stage pos	-190.132523	-190.1400660498719			
[mm] SIM translation stage offset	0	0.00754346686406393			
[s] Observation start time (MET)	237269480.184000	237268367.92921			
Observation start date	2005-07-09T04:10:16	2005-07-09T03:52:47			
[s] Observation end time (MET)	237284480.184000	237286017.40502			
Observation end date	2005-07-09T08:20:16	2005-07-09T08:46:57			
Read mode	CONTINUOUS	CONTINUOUS			

## 2.3 Aspect

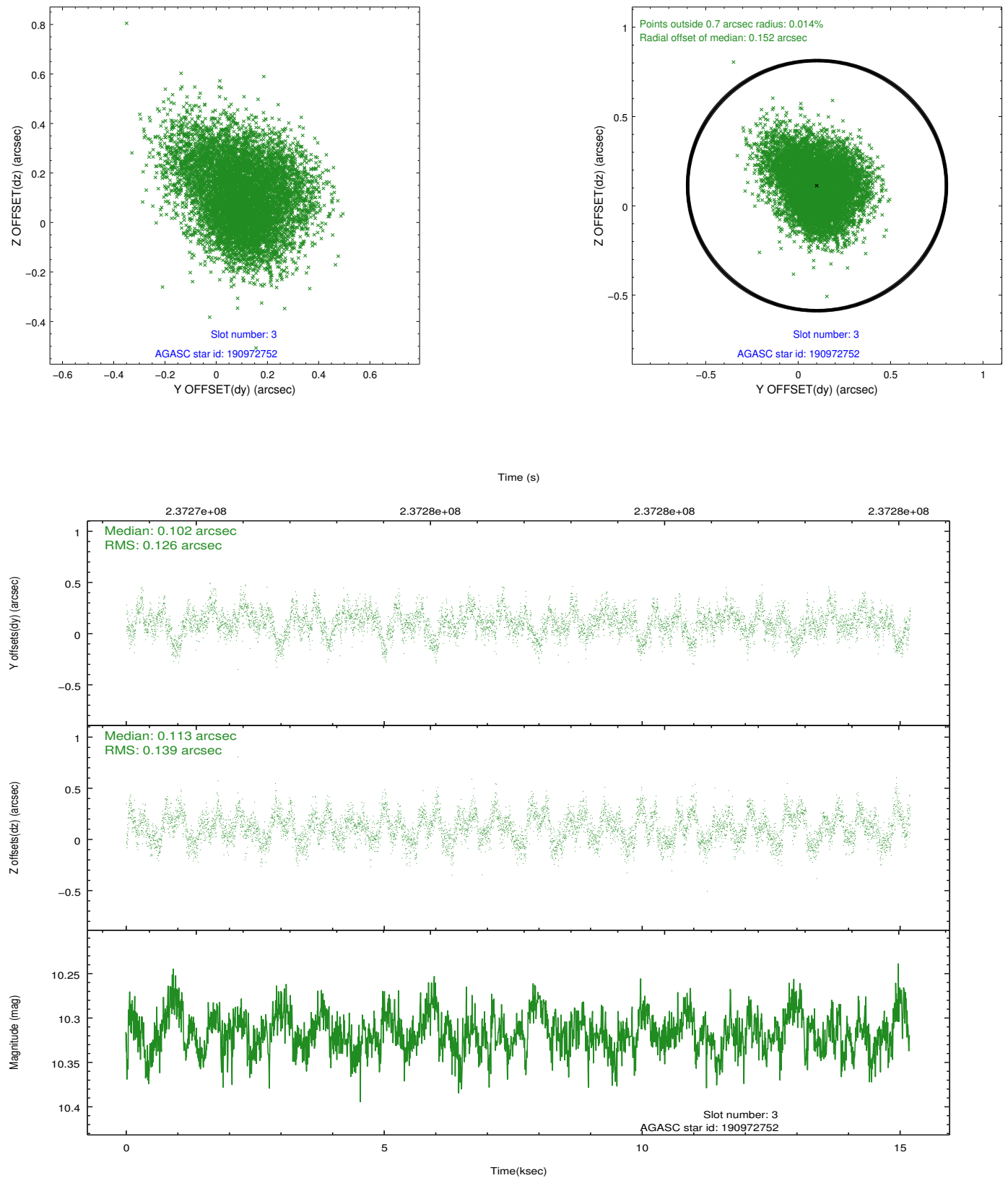


### Slot Statistics

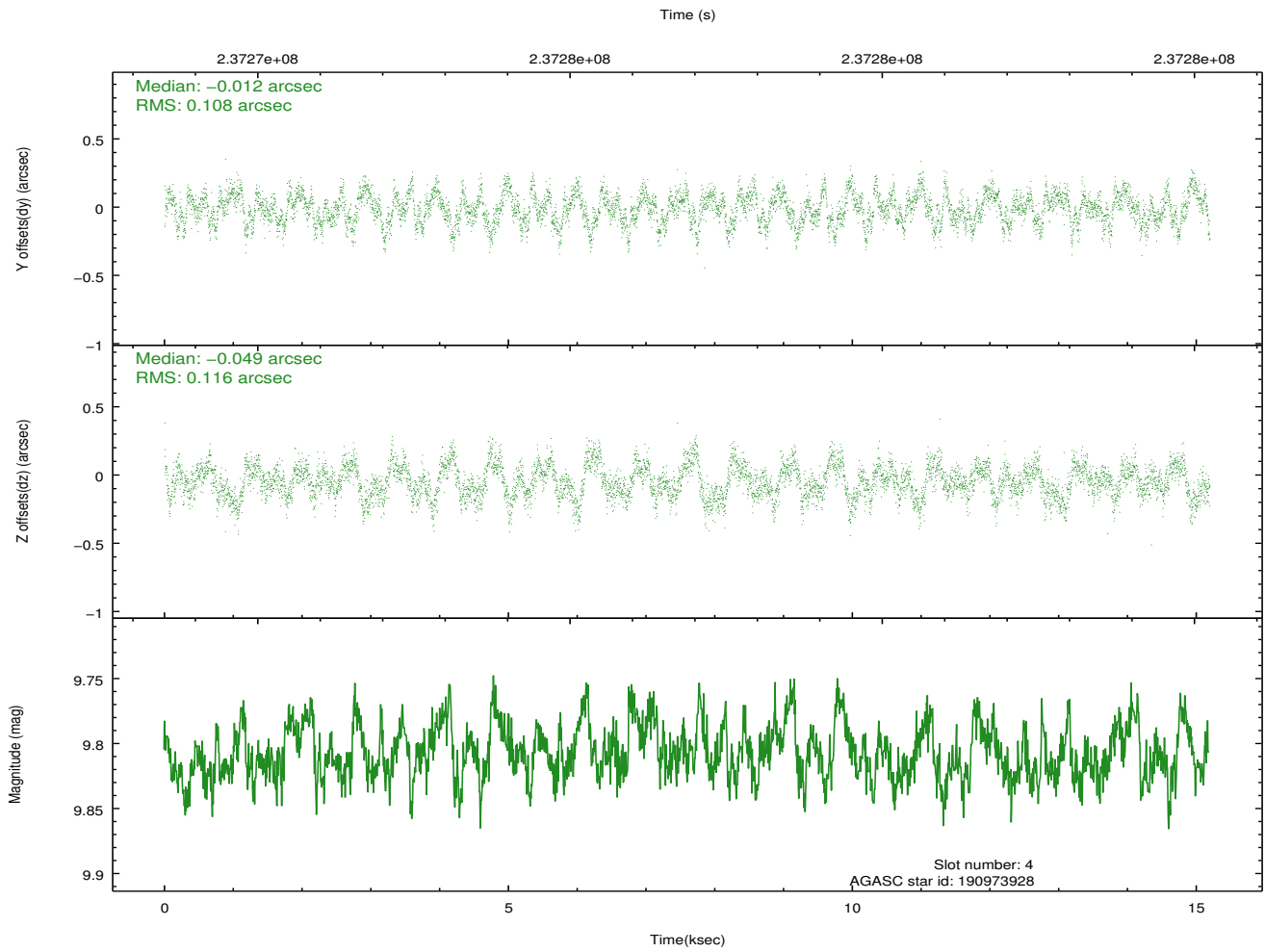
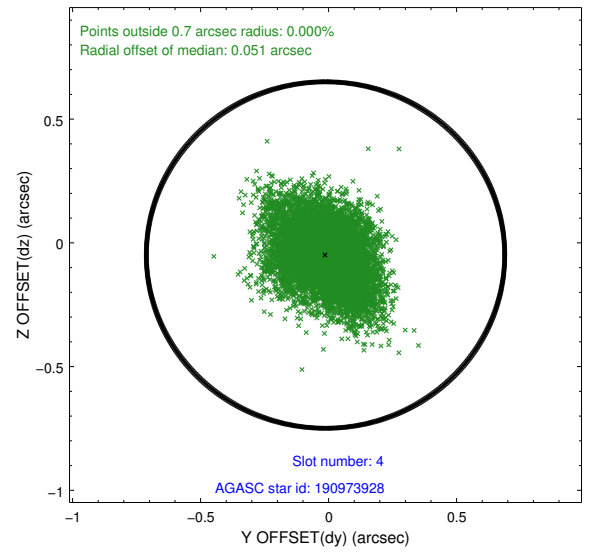
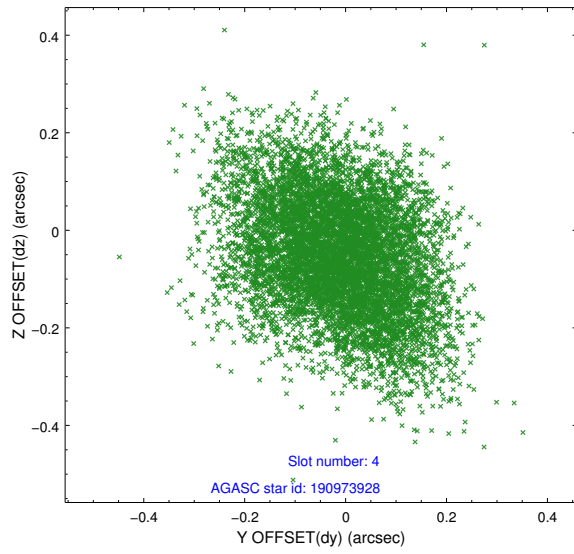
slot	status	id	mag	n_pts	med_dy	med_dz	dr1	dr2	ra	dec	mean_y	mean_z
0	FID	ACIS-S-2	7.10	3706	-0.045	-0.014	0.007	0.013	0.000000	0.000000	-760.22	-1731.99
1	FID	ACIS-S-4	7.21	3705	0.090	0.026	0.010	0.016	0.000000	0.000000	2153.03	176.28
2	FID	ACIS-S-5	7.23	3706	-0.075	-0.003	0.010	0.018	0.000000	0.000000	-1812.74	170.19
3	GUIDE	190972752	10.32	7398	0.102	0.113	0.201	0.318	197.567107	21.351082	-58.95	1330.84
4	GUIDE	190973928	9.81	7397	-0.012	-0.049	0.170	0.274	197.904188	21.564389	-1187.46	2100.09
5	GUIDE	190979840	10.35	7395	0.131	-0.102	0.170	0.266	197.337465	20.846267	1914.42	1276.09
6	GUIDE	190974376	6.79	7412	-0.299	-0.004	0.060	0.099	197.884749	21.918670	-2349.73	1571.45
7	GUIDE	190977688	7.90	7410	0.085	0.034	0.080	0.130	197.454100	20.653773	2416.67	1894.05

## 2.4 Star Slots

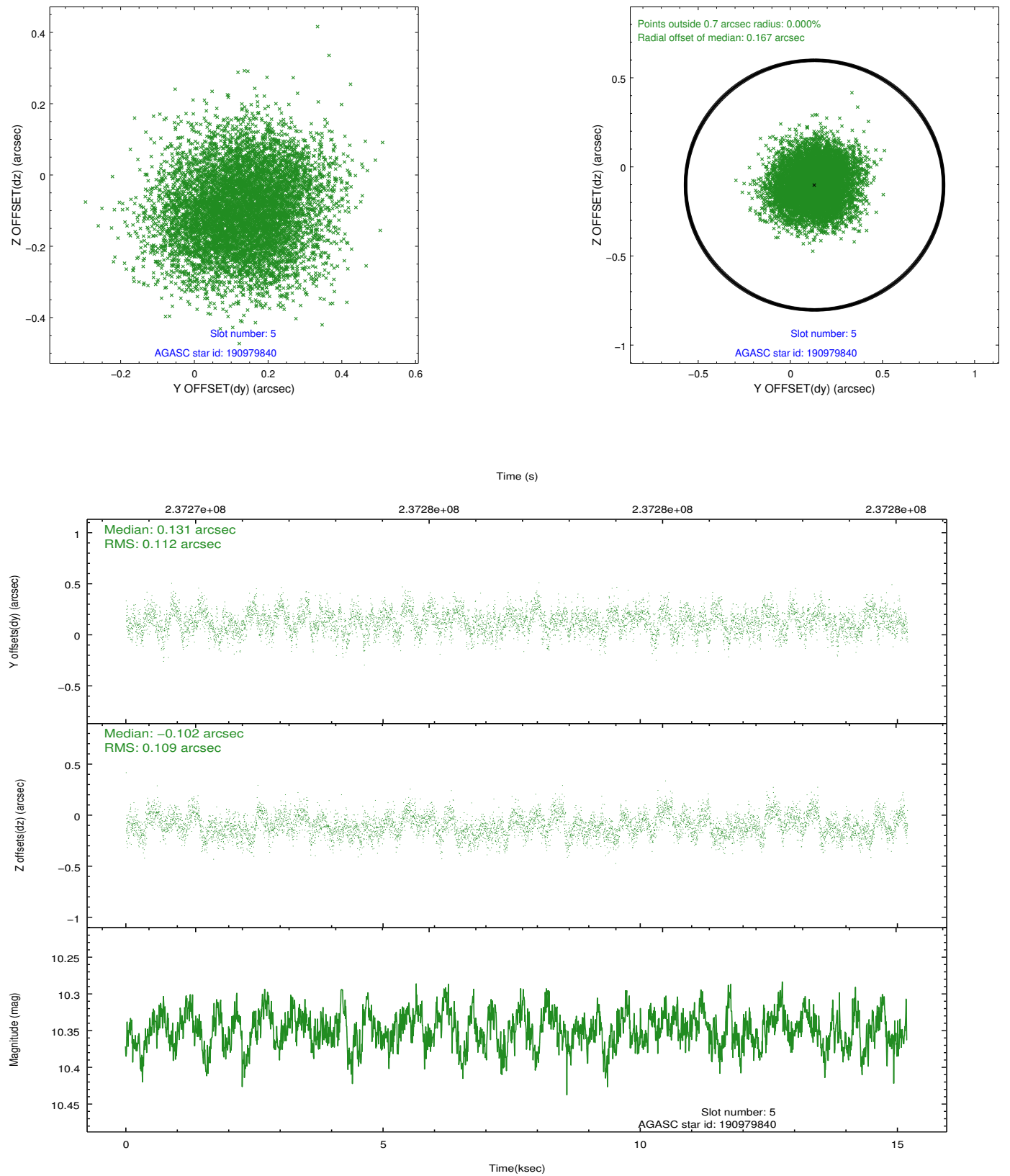
### 2.4.1 Slot 3



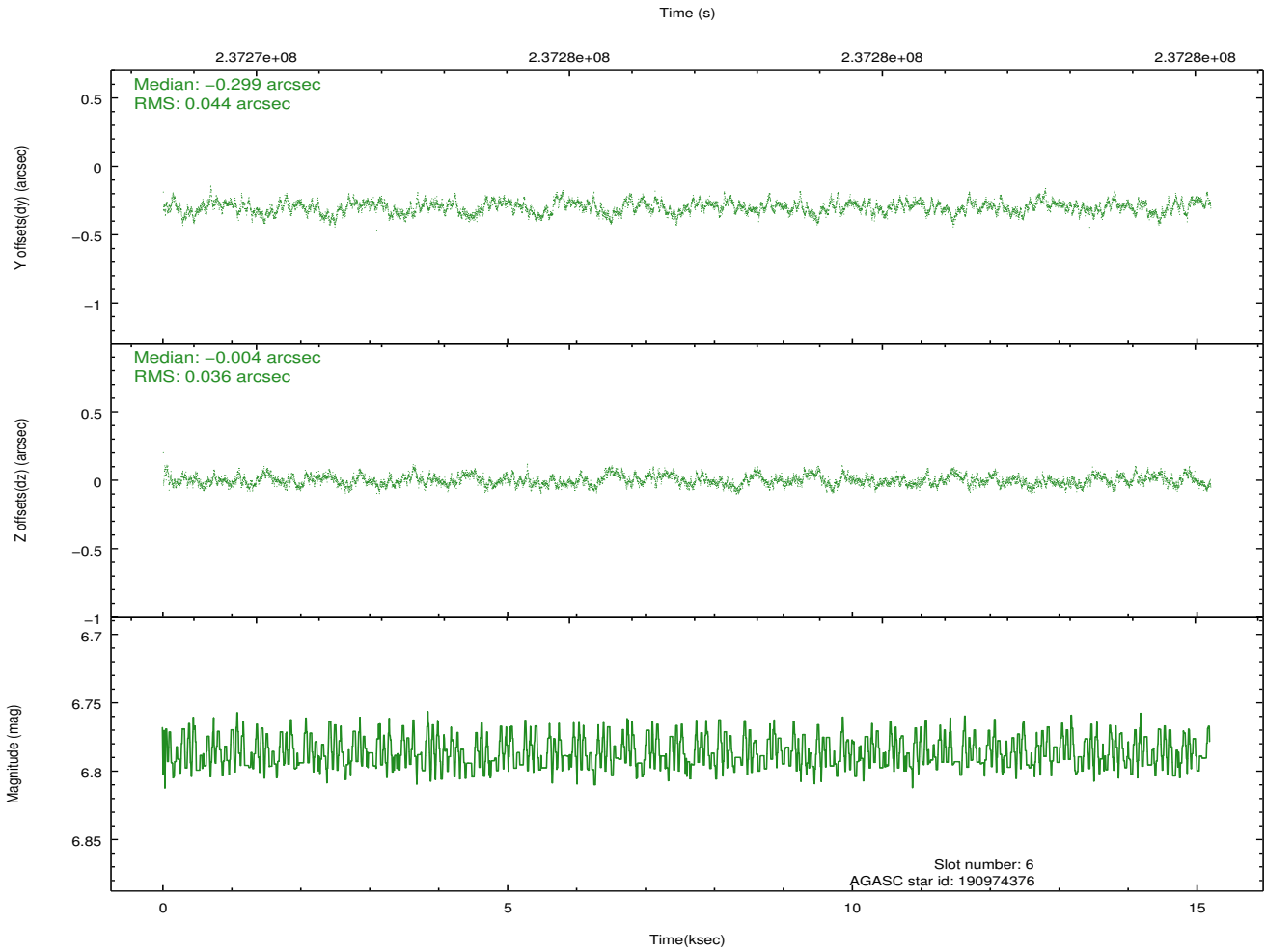
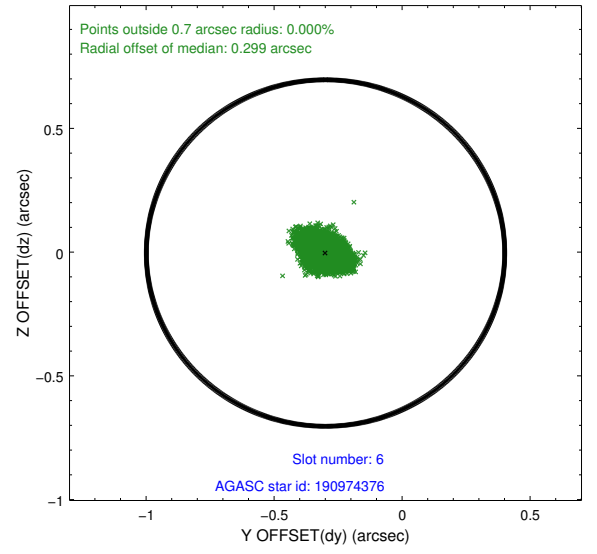
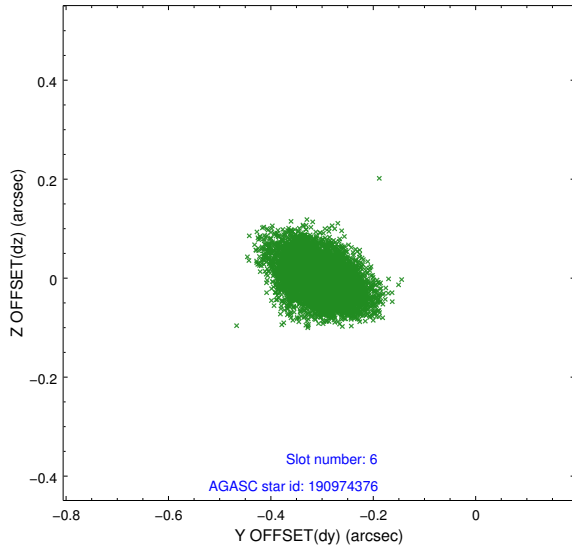
## 2.4.2 Slot 4



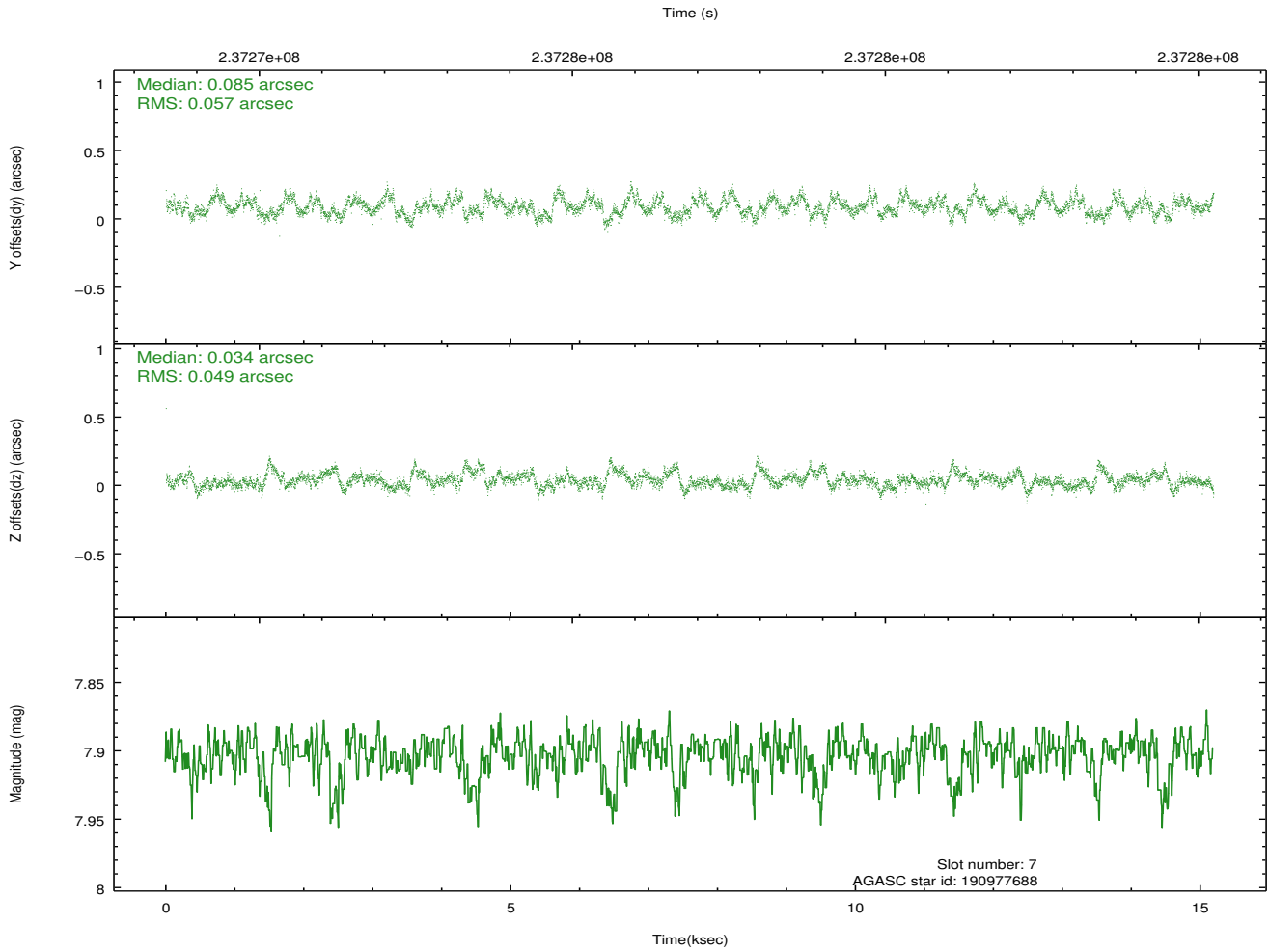
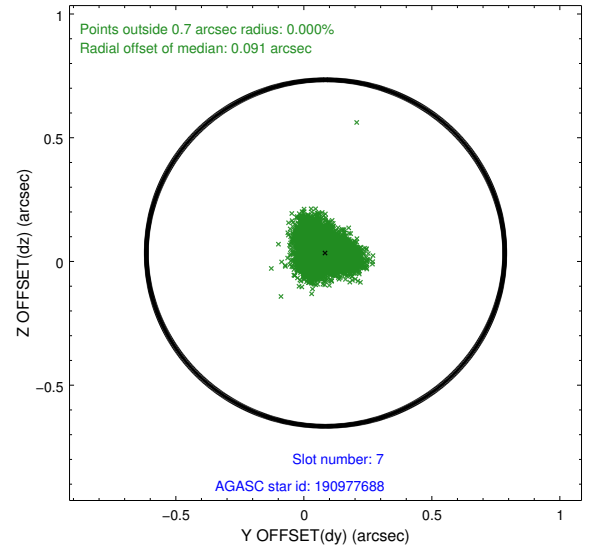
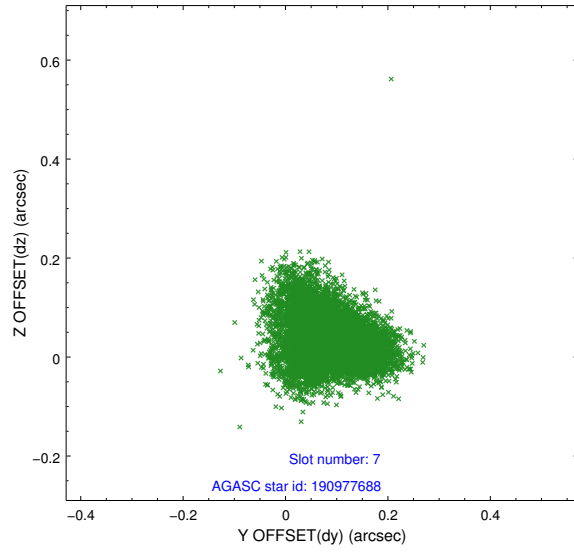
### 2.4.3 Slot 5



## 2.4.4 Slot 6

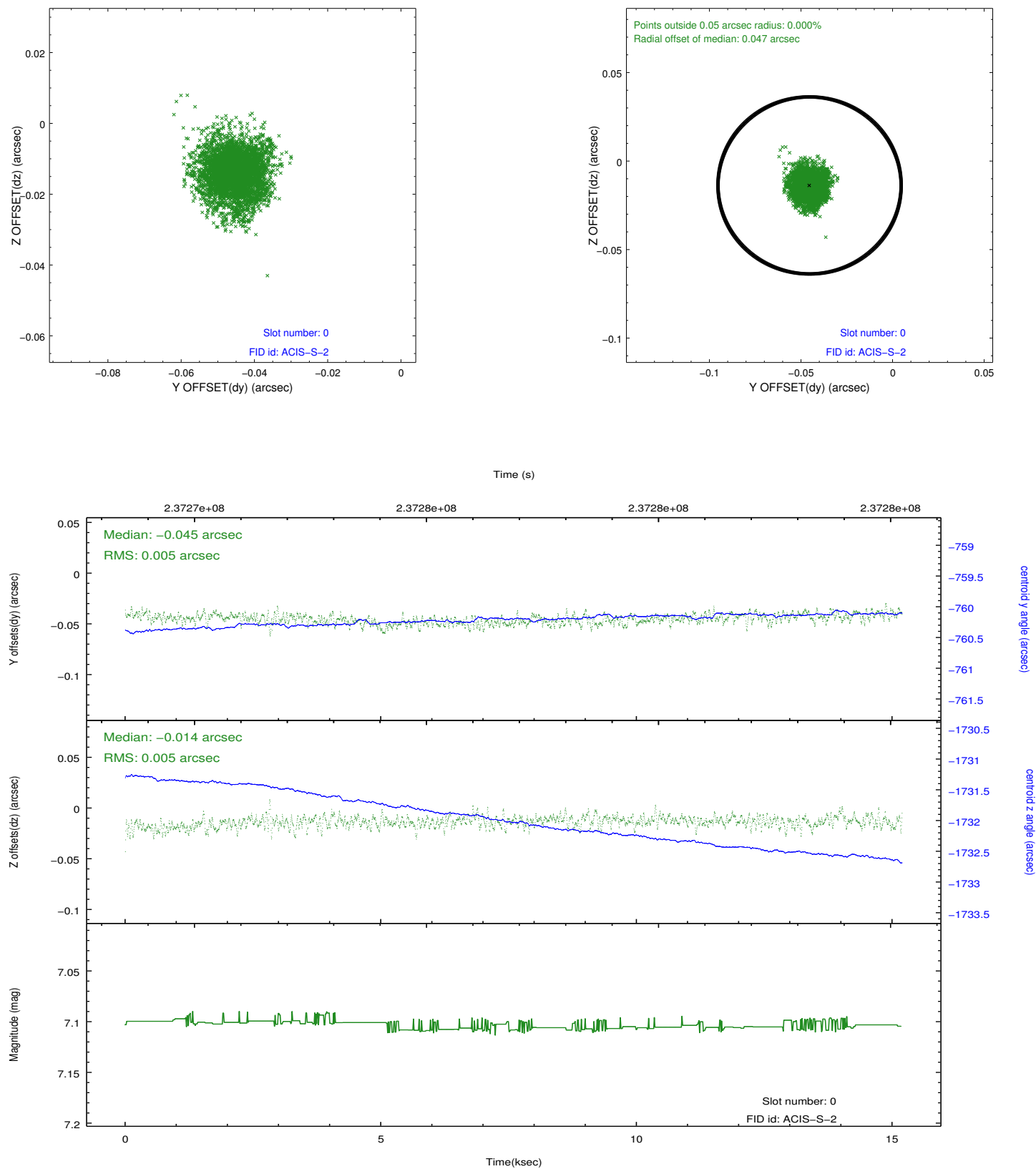


## 2.4.5 Slot 7

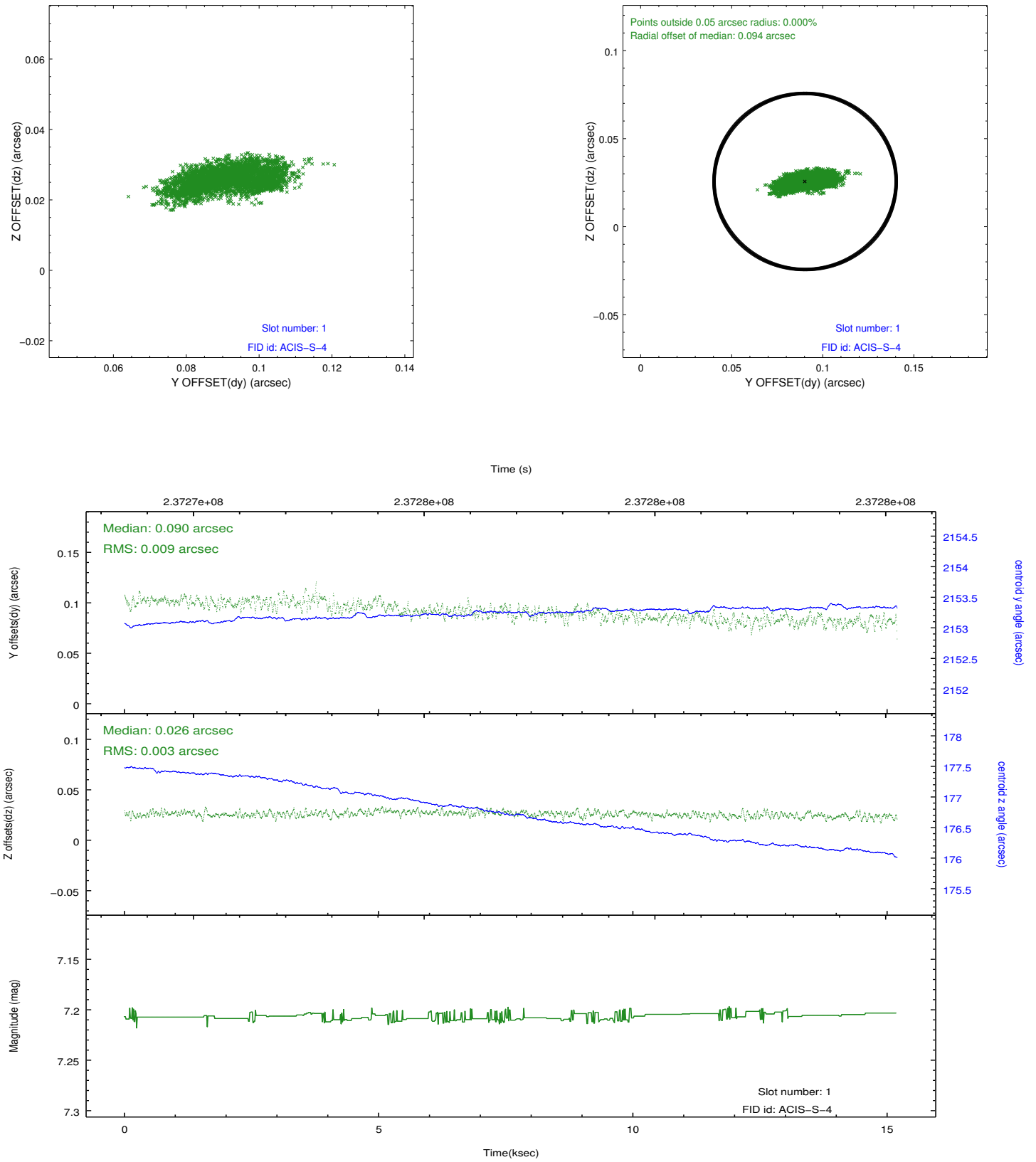


## 2.5 FID Slots

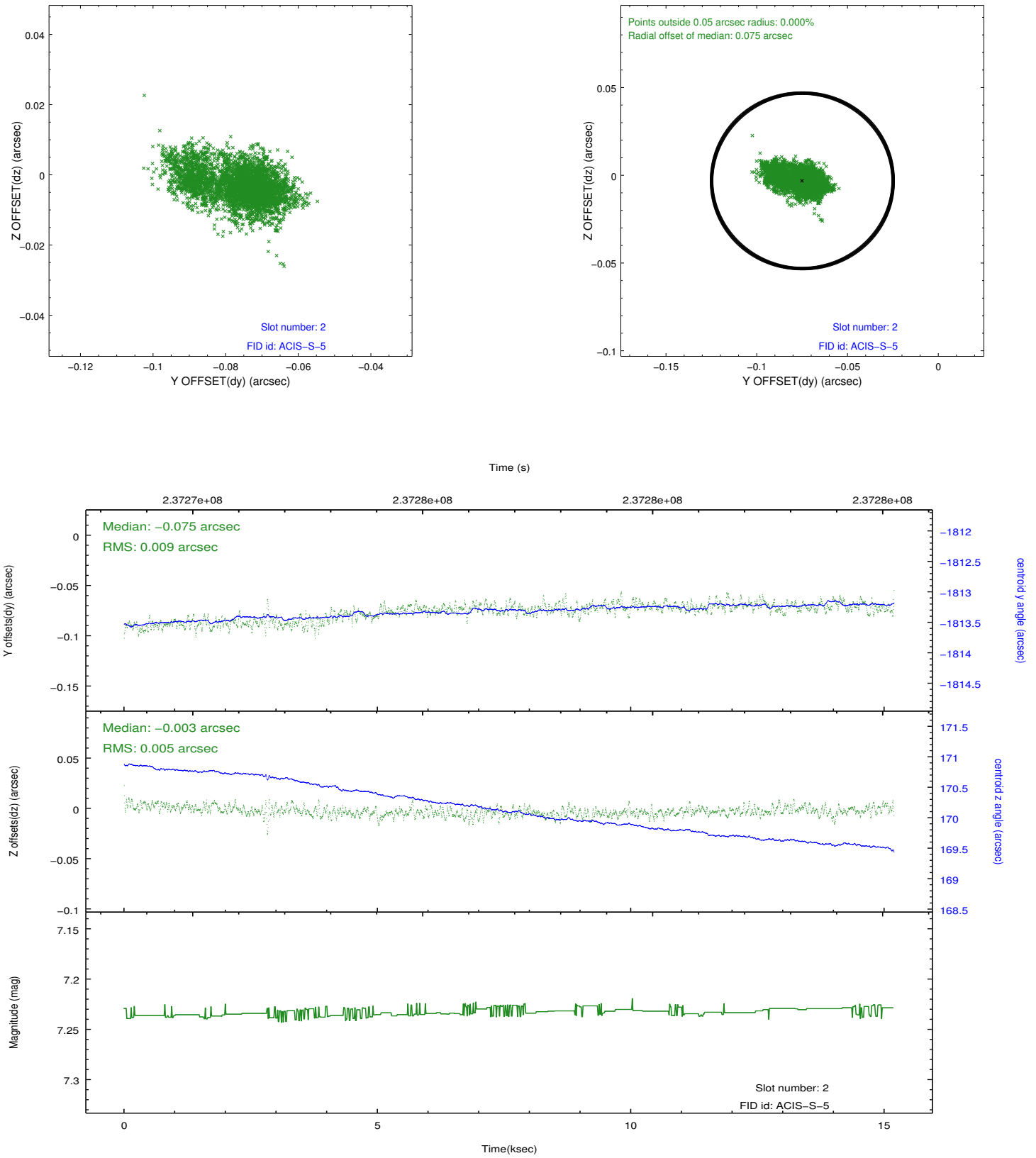
### 2.5.1 Slot 0



## 2.5.2 Slot 1



### 2.5.3 Slot 2



## A Summary

### A.1 Status

V&V Scientist	Joy Nichols
V&V Date (YYYY-MM-DD)	2013.01.15
V&V Edition	1
V&V Disposition and Status	OK
V&V Charge Time	15.1875

### A.2 Comments