

V&V Reference Report

L2 ASCDS Version : 7.6.8.1

Observation 5525 - L2 Version 003
Chandra X-Ray Center

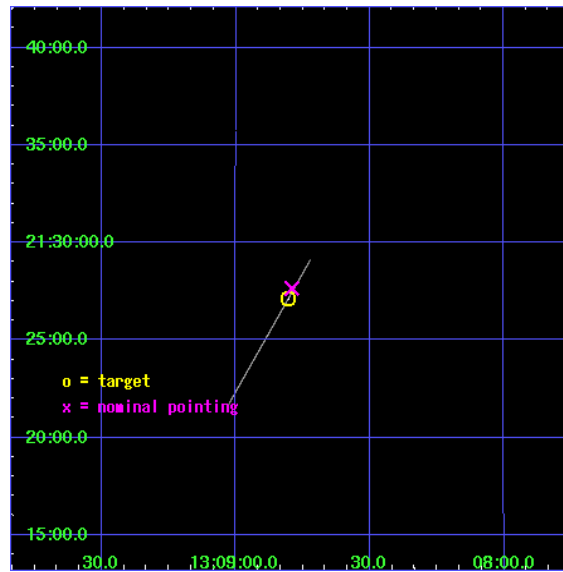
L2 Processing Date : Sep 11 2006

Contents

1	Front	2
2	OBI	3
2.1	OBI	3
2.1.1	Images	3
2.1.2	Bias	3
2.1.3	Parameters	4
2.1.4	Events	4
2.2	Compared Parameters	5
2.3	Aspect	6
2.4	Star Slots	9
2.4.1	Slot 3	9
2.4.2	Slot 4	10
2.4.3	Slot 5	11
2.4.4	Slot 7	12
2.5	FID Slots	13
2.5.1	Slot 0	13
2.5.2	Slot 1	14
2.5.3	Slot 2	15
A	Summary	16
A.1	Status	16
A.2	Comments	16

1 Front

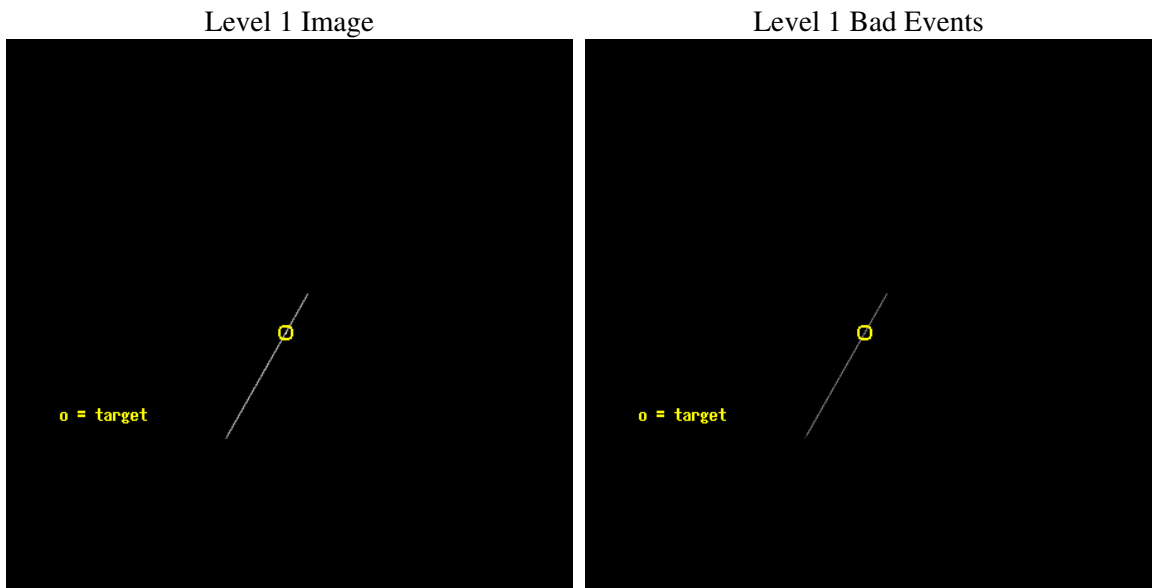
seq_num	500519
obs_id	5525
title	Timing the Enigmatic Nearby Neutron Star RX J1308.8+2127
observer	Dr David Kaplan
object	RX J1308.8+2127
ra_targ	197.20125
dec_targ	21.451889
ra_nom	197.19775423538
dec_nom	21.460863866347
roll_nom	119.82832938593
revision	3
ontime	5639.25
livetime	5617.2216796875
ontime7	5639.25
l2events	24897



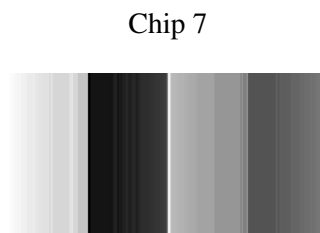
2 OBI

2.1 OBI

2.1.1 Images



2.1.2 Bias



2.1.3 Parameters

obi_num	0
ascdsver	7.6.8.1
caldbver	3.2.3
date	2006-09-11T19:31:15
revision	3

sched_exp_time	5500.000000
ontime	6366.4573821723
ontime7	6366.4573821723
l1events	33517

2.1.4 Events

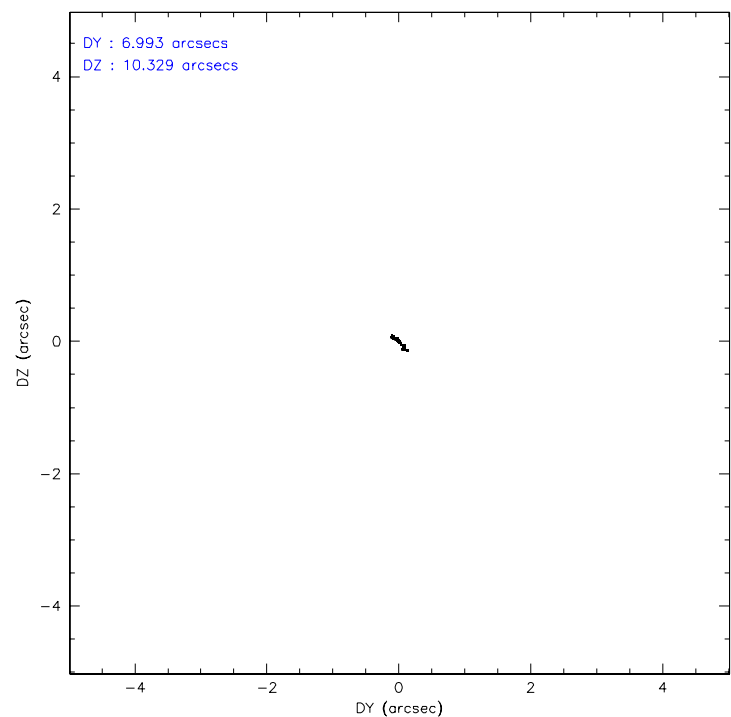
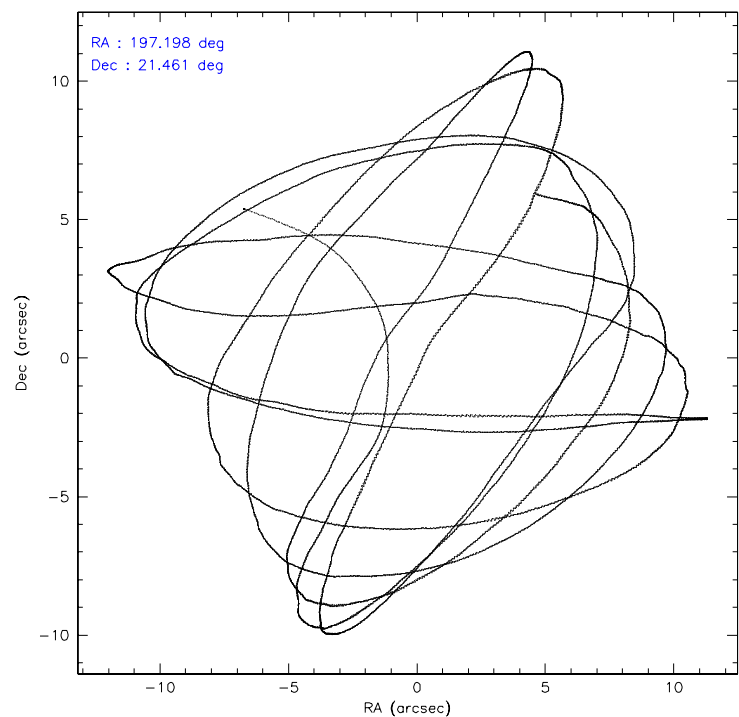
	ccd 7
level 1 events	33517
rejected events	7372
rejected %	21%

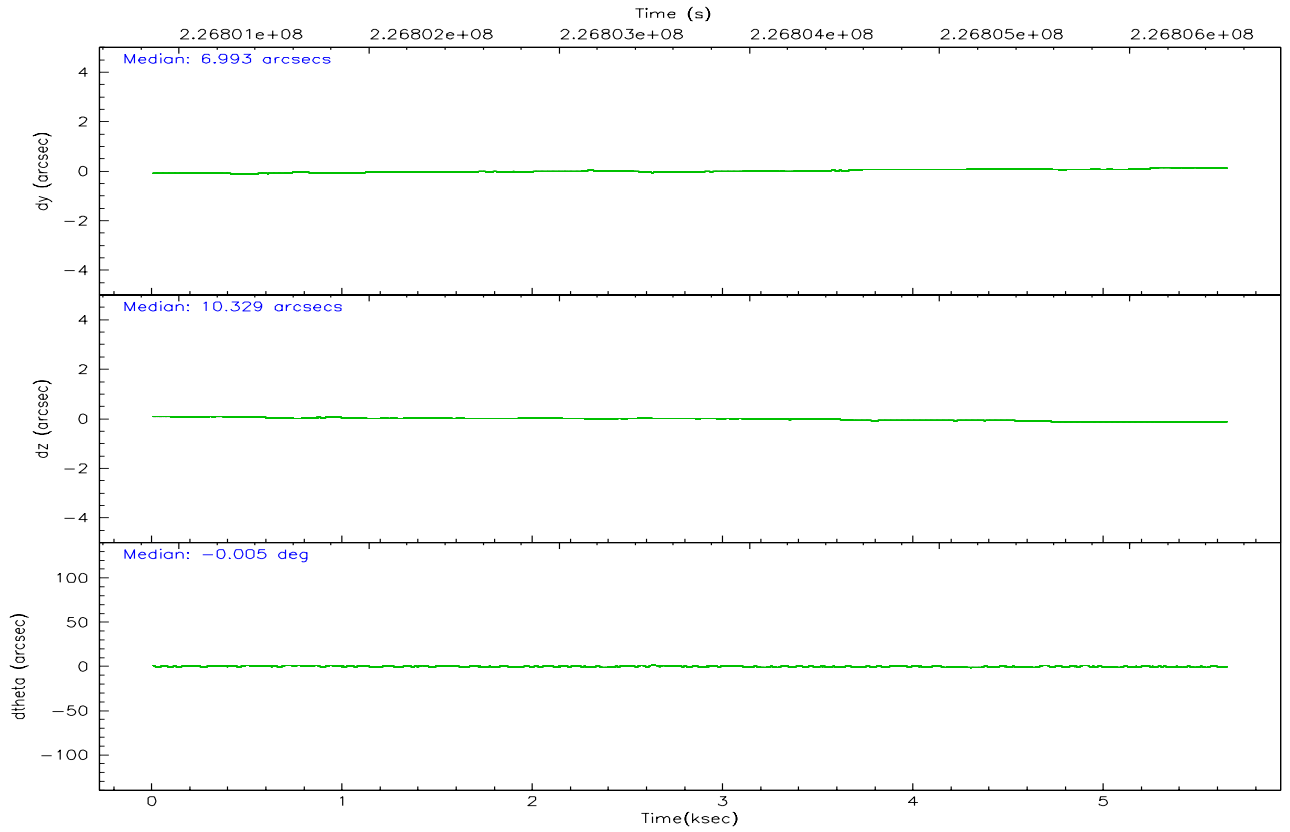
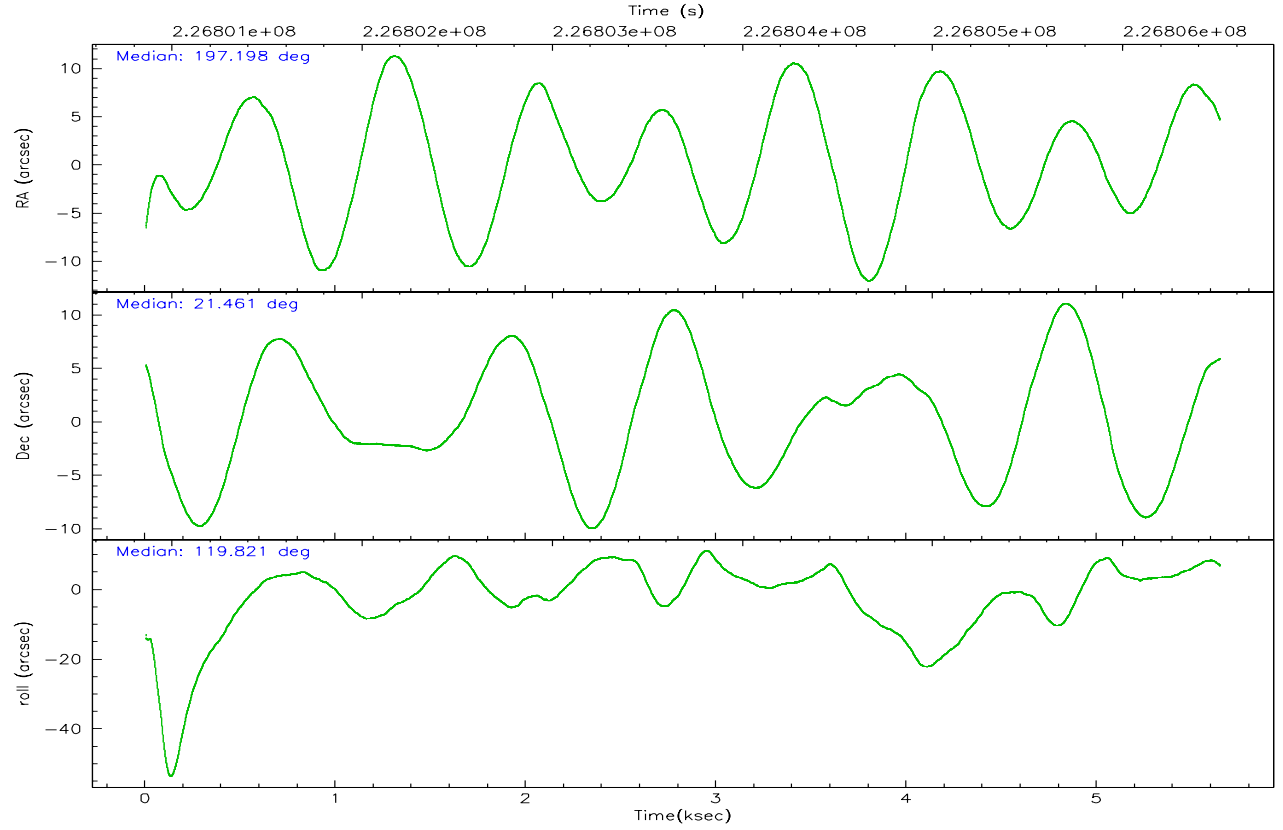
	ccd 7
grade 0 events	2998
	8%
grade 1 events	53
	0%
grade 2 events	7741
	23%
grade 3 events	1291
	3%
grade 4 events	1284
	3%
grade 5 events	4245
	12%
grade 6 events	15905
	47%
grade 7 events	0
	0%

2.2 Compared Parameters

Parameter	Planned	Actual	Parameter	Planned	Actual
Instrument	ACIS	ACIS	Obspar format version number	6	6
Detector	ACIS-7	ACIS-7	Obspar file type	PREDICTED	ACTUAL
Grating	NONE	NONE	Obspar update status	NONE	UPDATED
Data mode	CC33_FAINT	CC33_FAINT	On-chip summing requested	N	N
Observation mode	POINTING	POINTING	Subarray requested	NONE	NONE
Pointing RA	197.223232	197.1977542353794	Alternating exposures requested	N	N
Pointing Dec	21.447630	21.46086386634706	Primary exposure time	0.000000	0
Pointing Roll	119.662291	119.8283293859341			
SIM focus pos (mm)	-0.684267	-0.6828225247311905			
SIM defocus (mm)	0	0.001444936568705701			
SIM translation stage pos (mm)	-190.132523	-190.1400660498719			
SIM translation stage offset (mm)	0	0.00754346686406393			
Observation start time	226801014.184000	226800150.07755			
Observation start date	2005-03-10T00:15:50	2005-03-10T00:02:30			
Observation end time	226806514.184000	226807472.67788			
Observation end date	2005-03-10T01:47:30	2005-03-10T02:04:32			
Read mode	CONTINUOUS	CONTINUOUS			

2.3 Aspect



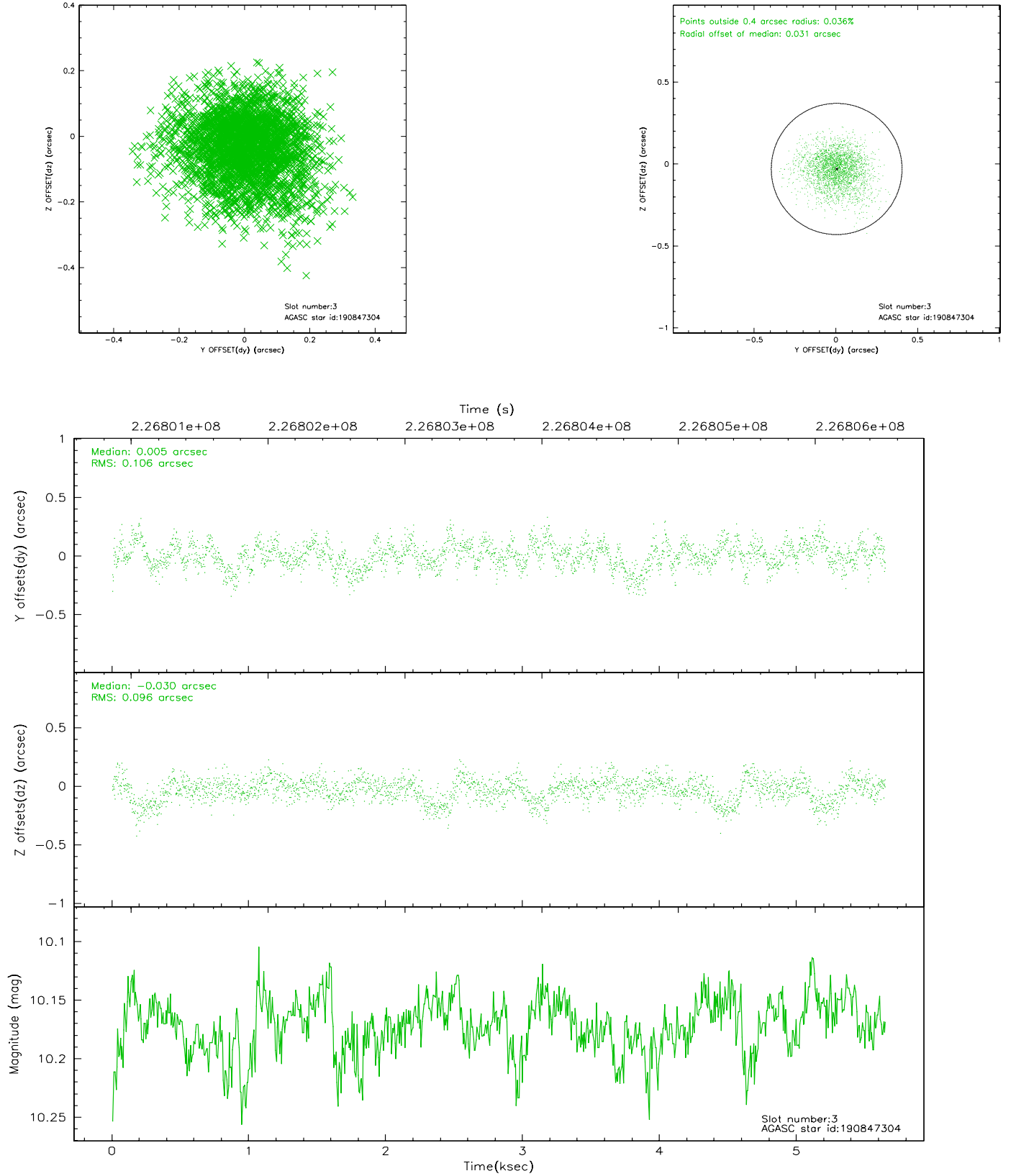


Slot Statistics

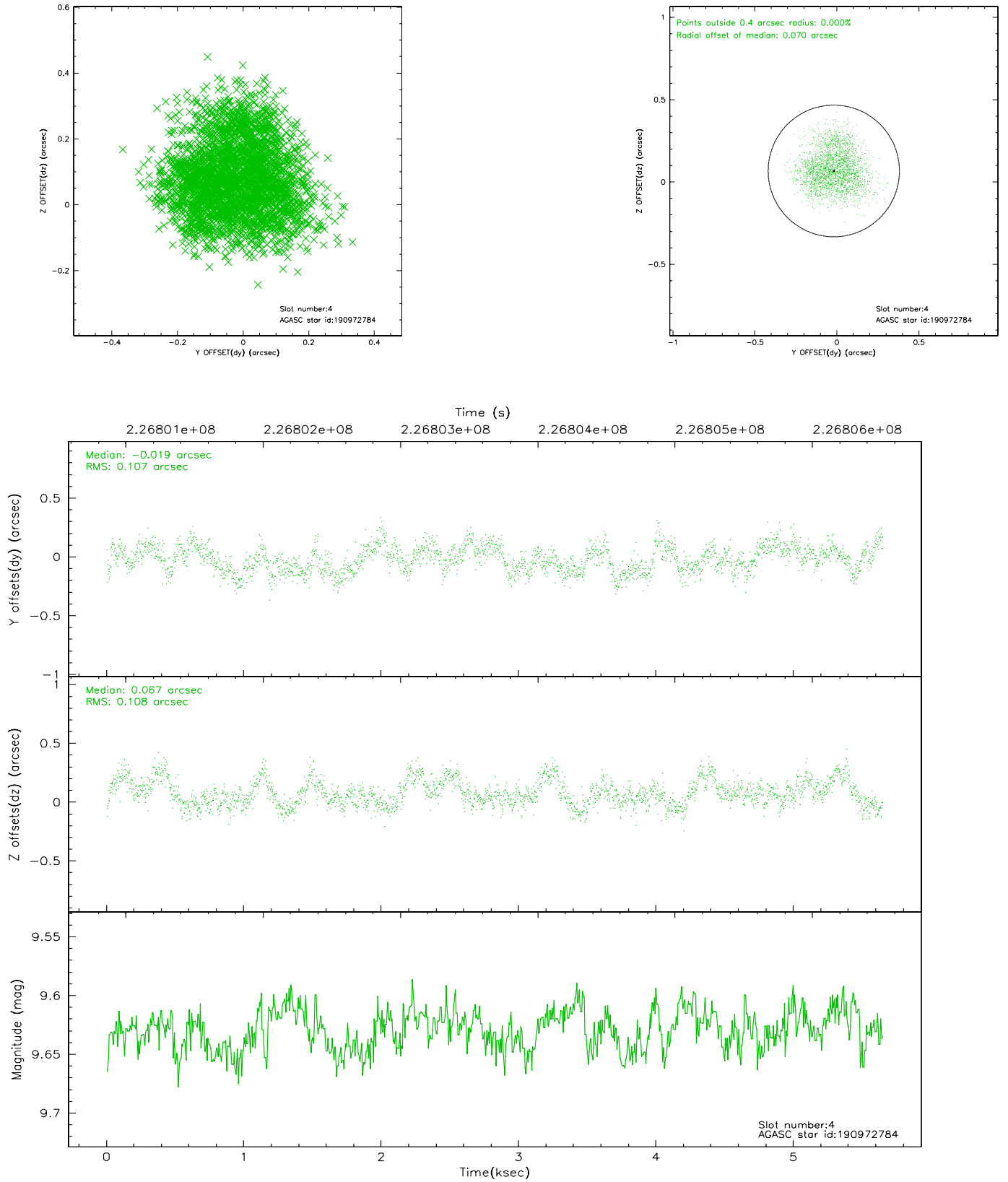
slot	status	id	mag	n_pts	med_dy	med_dz	dr1	dr2	ra	dec	mean_y	mean_z
0	FID	ACIS-S-2	7.10	1377	-0.046	0.000	0.008	0.013	0.000000	0.000000	-759.76	-1731.58
1	FID	ACIS-S-4	7.20	1377	0.050	0.022	0.006	0.010	0.000000	0.000000	2153.09	175.89
2	FID	ACIS-S-5	7.23	1377	-0.035	-0.014	0.008	0.012	0.000000	0.000000	-1811.27	170.64
3	GUIDE	190847304	10.17	2753	0.005	-0.030	0.151	0.253	196.395854	21.619494	1915.16	2096.72
4	GUIDE	190972784	9.63	2754	-0.019	0.067	0.167	0.247	197.351360	22.226147	2226.00	-1757.05
5	GUIDE	190973928	9.83	2755	-0.065	0.042	0.160	0.270	197.904188	21.564389	-756.24	-2191.81
6	OMITTED		0.00	0	0.000	0.000	0.000	0.000	0.000000	0.000000	0.00	0.00
7	GUIDE	190979840	10.35	2751	0.075	-0.091	0.174	0.292	197.337465	20.846267	-2070.59	736.30

2.4 Star Slots

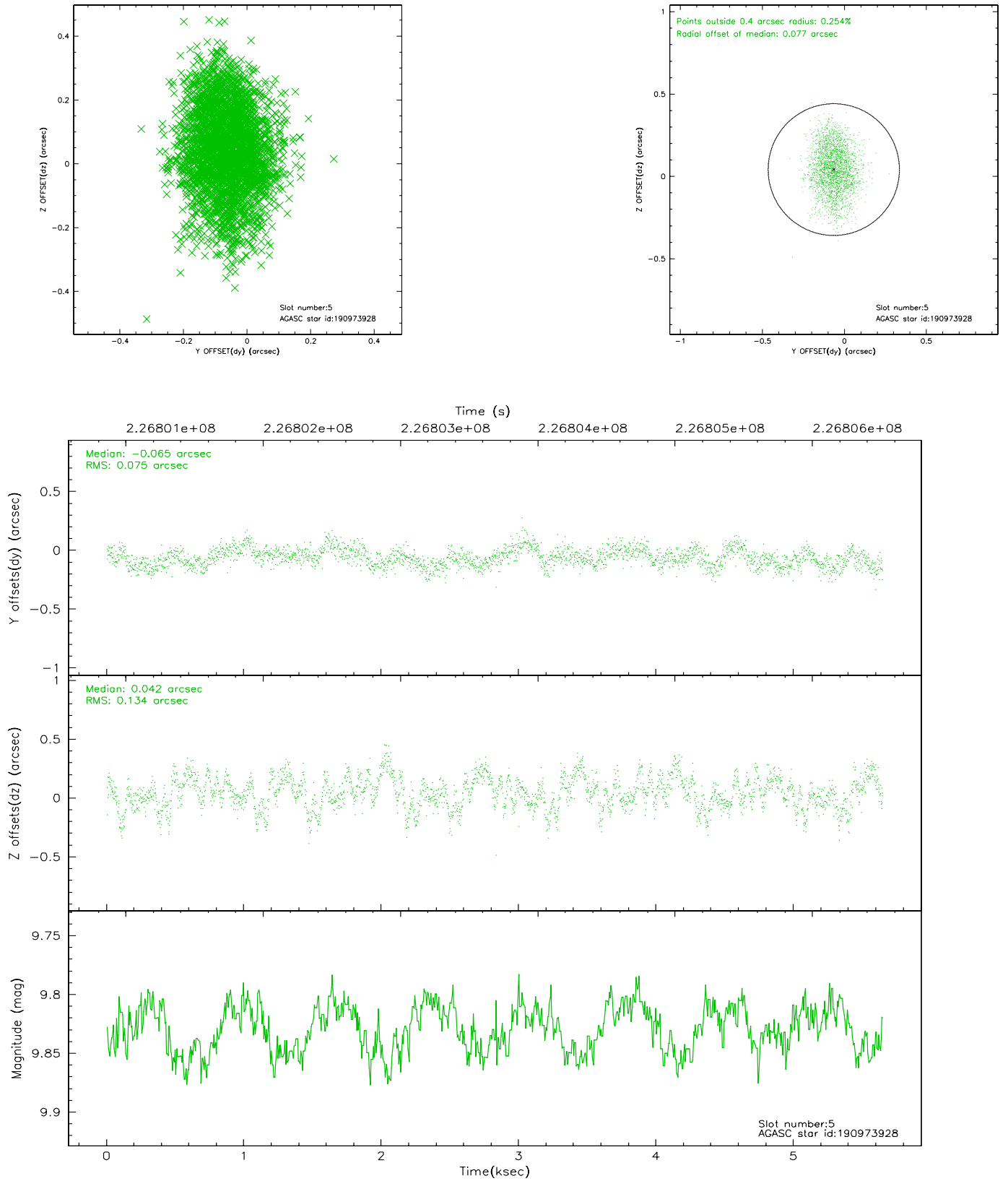
2.4.1 Slot 3



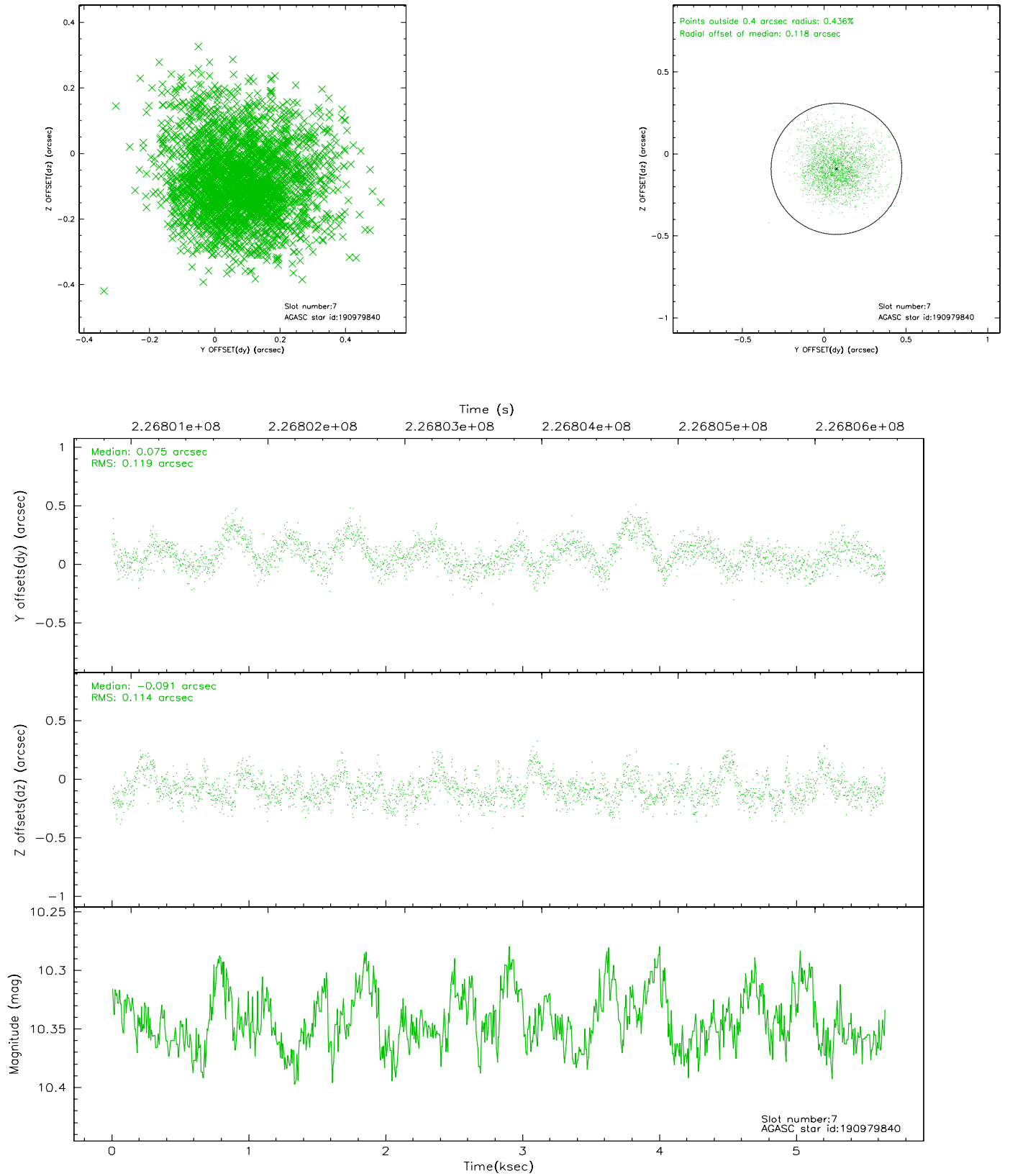
2.4.2 Slot 4



2.4.3 Slot 5

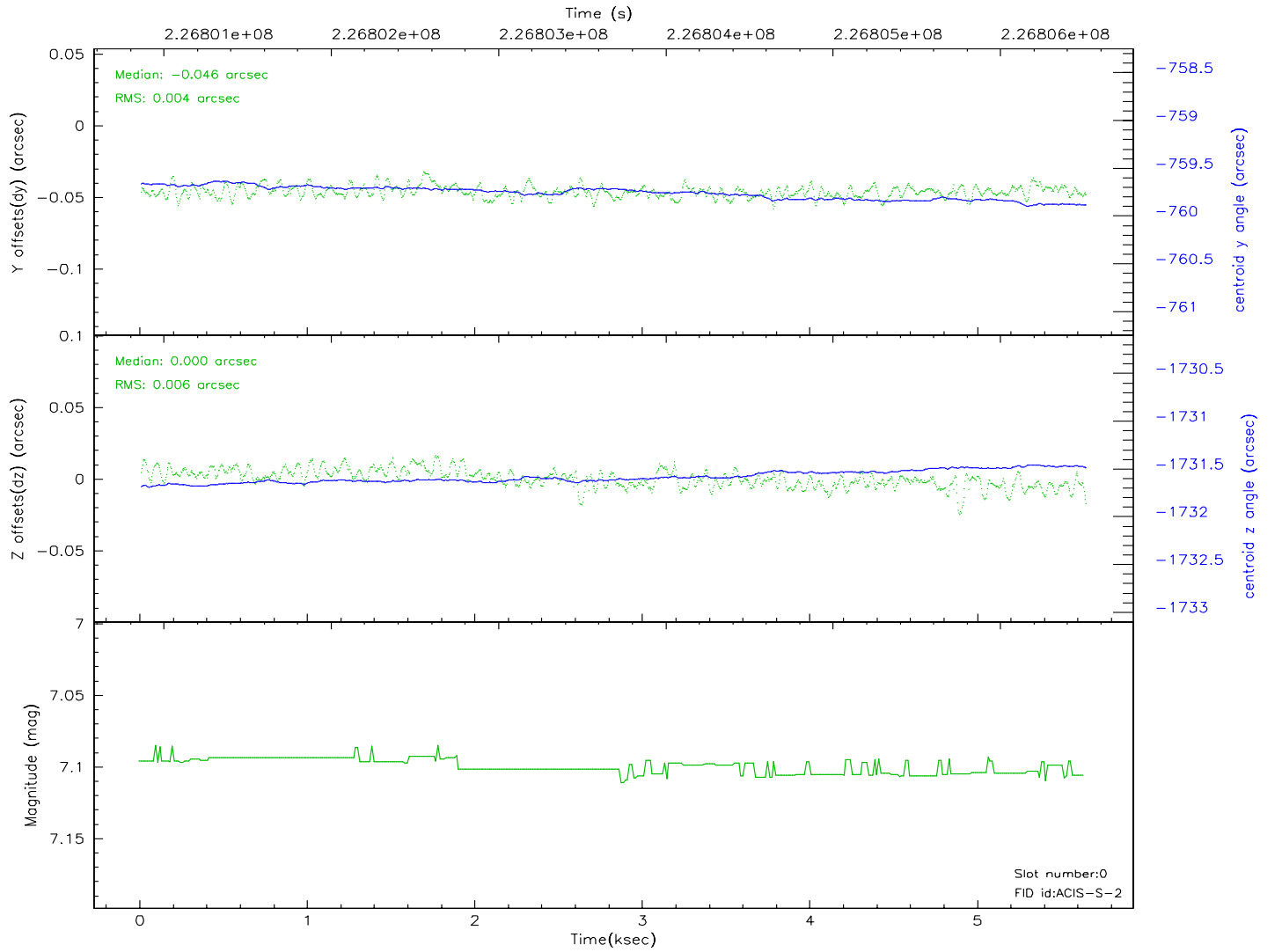
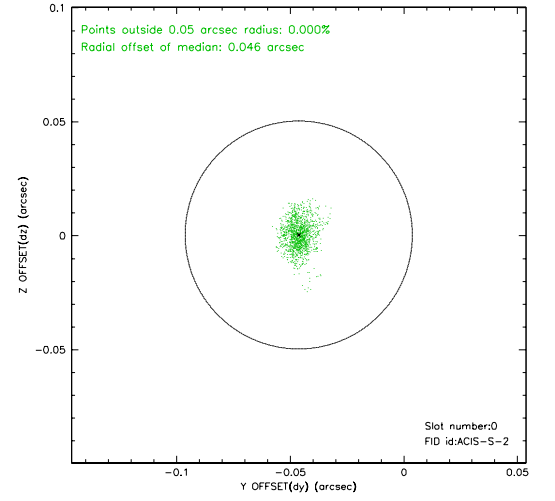
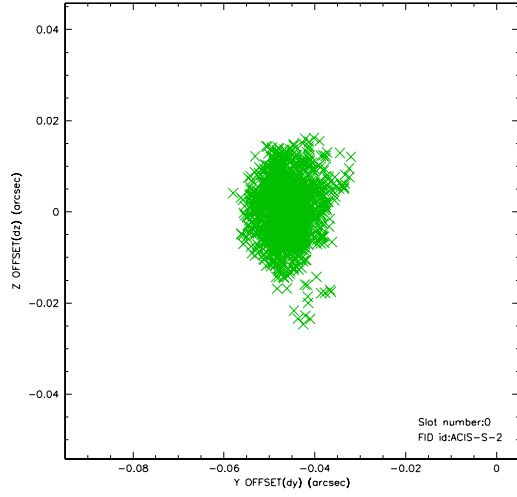


2.4.4 Slot 7

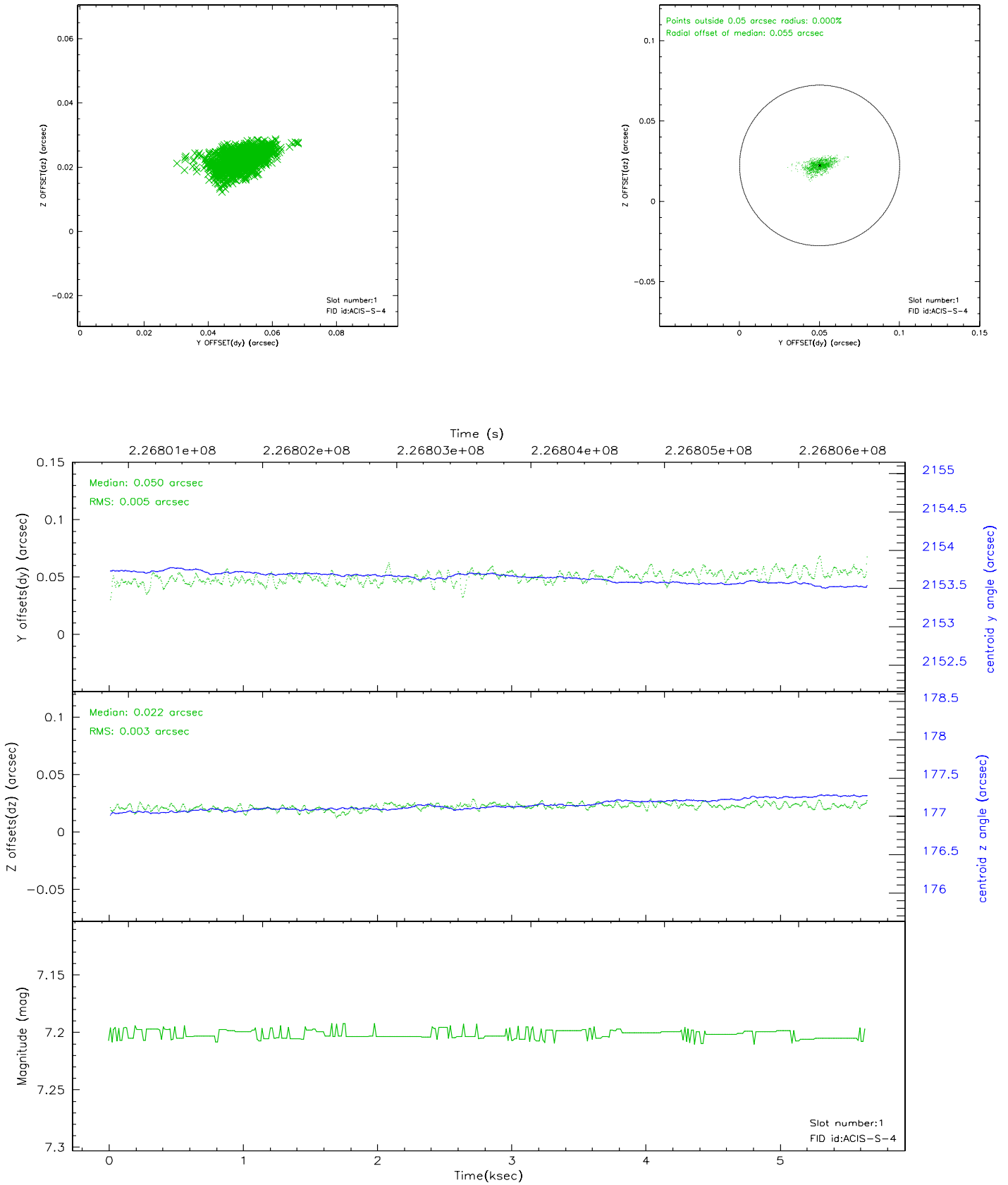


2.5 FID Slots

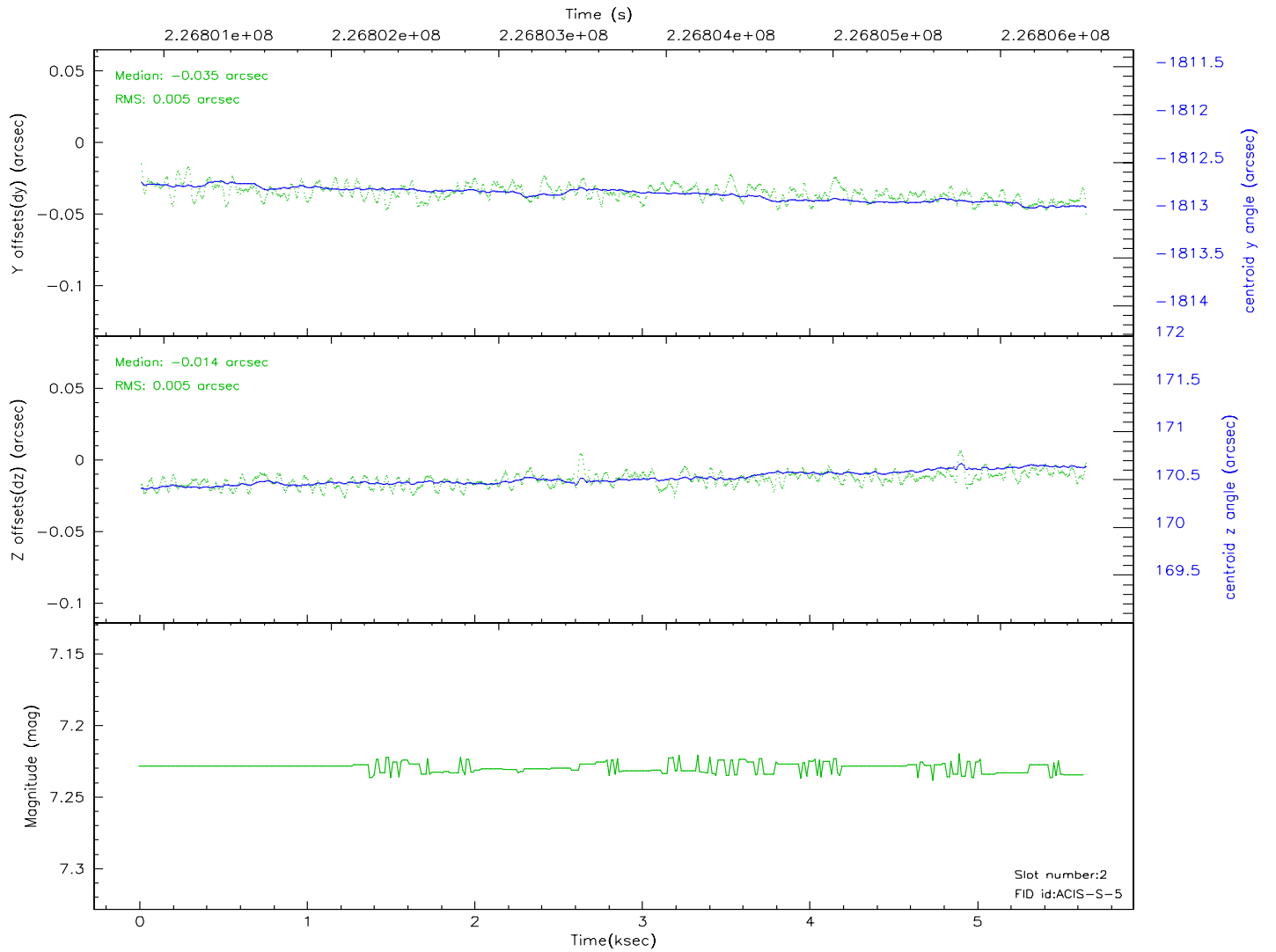
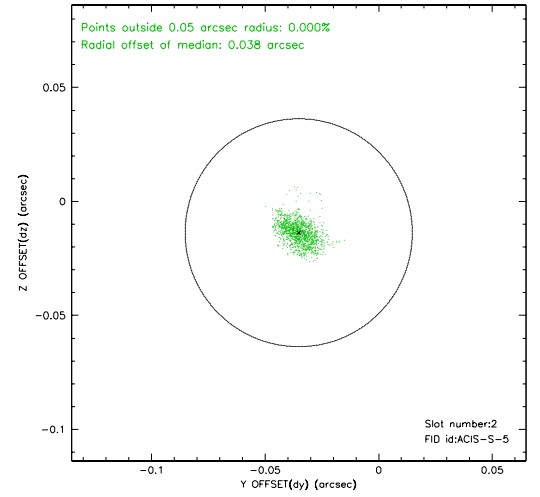
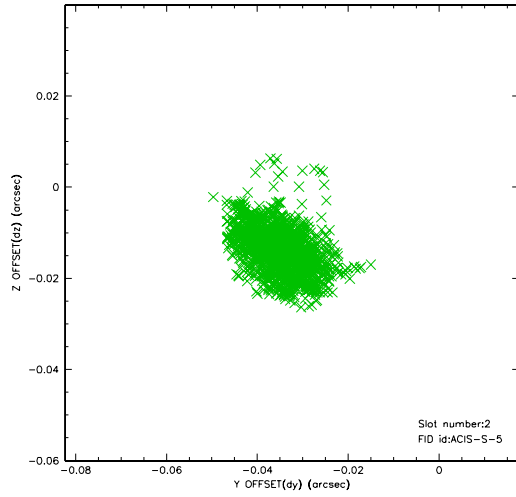
2.5.1 Slot 0



2.5.2 Slot 1



2.5.3 Slot 2



A Summary

A.1 Status

V&V Scientist	Beth Sundheim
V&V Date (YYYY-MM-DD)	2006.09.12
V&V Edition	1
V&V Disposition and Status	OK
V&V Charge Time	5.643

A.2 Comments

Slot 6 was excluded from aspect solution.