

# V&V Reference Report

## L2 ASCDS Version : 7.6.8.1

Observation 5522 - L2 Version 003  
Chandra X-Ray Center

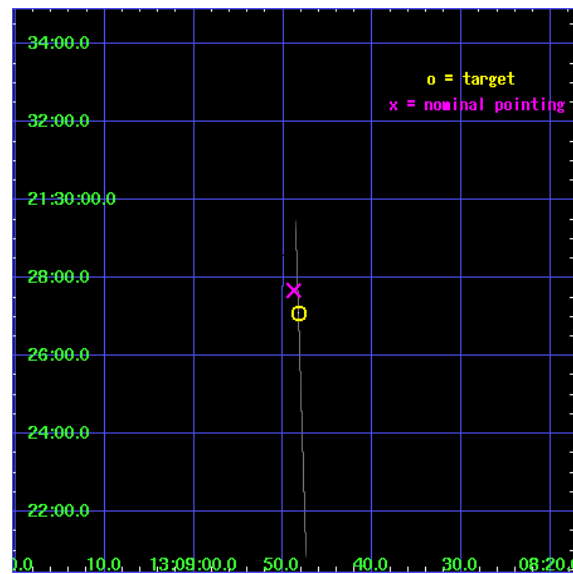
L2 Processing Date : Aug 15 2006

## Contents

<b>1</b>	<b>Front</b>	<b>2</b>
<b>2</b>	<b>OBI</b>	<b>3</b>
2.1	OBI . . . . .	3
2.1.1	Images . . . . .	3
2.1.2	Bias . . . . .	3
2.1.3	Parameters . . . . .	4
2.1.4	Events . . . . .	4
2.2	Compared Parameters . . . . .	5
2.3	Aspect . . . . .	6
2.4	Star Slots . . . . .	9
2.4.1	Slot 3 . . . . .	9
2.4.2	Slot 4 . . . . .	10
2.4.3	Slot 5 . . . . .	11
2.4.4	Slot 6 . . . . .	12
2.4.5	Slot 7 . . . . .	13
2.5	FID Slots . . . . .	14
2.5.1	Slot 0 . . . . .	14
2.5.2	Slot 1 . . . . .	15
2.5.3	Slot 2 . . . . .	16
<b>A</b>	<b>Summary</b>	<b>17</b>
A.1	Status . . . . .	17
A.2	Comments . . . . .	17

# 1 Front

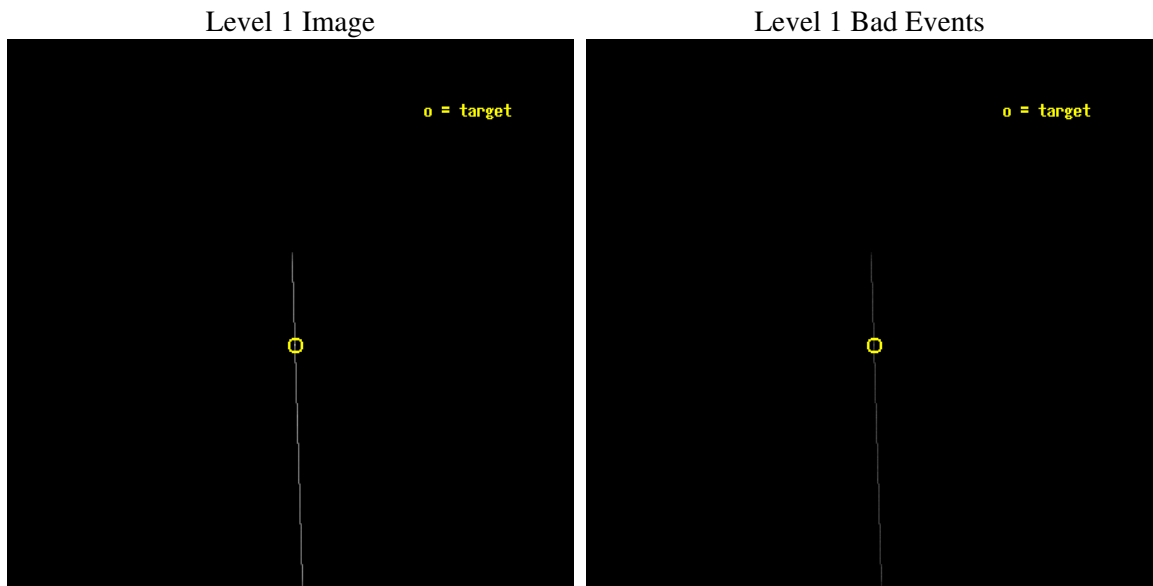
seq_num	500516
obs_id	5522
title	Timing the Enigmatic Nearby Neutron Star RX J1308.8+2127
observer	Dr David Kaplan
object	RX J1308.8+2127
ra_targ	197.20125
dec_targ	21.451889
ra_nom	197.20340934338
dec_nom	21.461330374773
roll_nom	88.155849108688
revision	3
ontime	15951.75
livetime	15889.438476562
ontime7	15951.75
l2events	71630



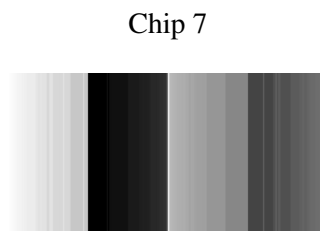
## 2 OBI

### 2.1 OBI

#### 2.1.1 Images



#### 2.1.2 Bias



### 2.1.3 Parameters

obi_num	0
ascdsver	7.6.8.1
caldbver	3.2.3
date	2006-08-14T21:57:23
revision	3

sched_exp_time	15770.000000
ontime	16417.270112306
ontime7	16417.270112306
l1events	88436

### 2.1.4 Events

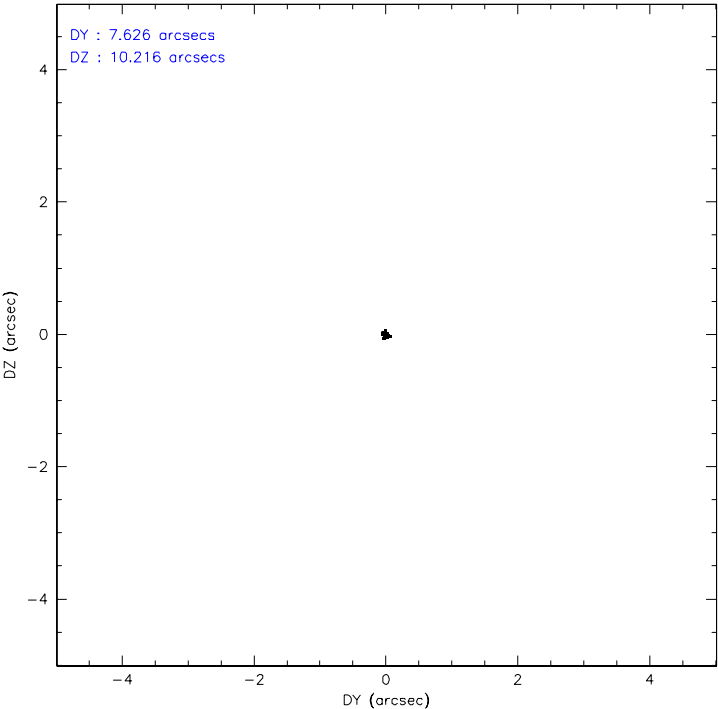
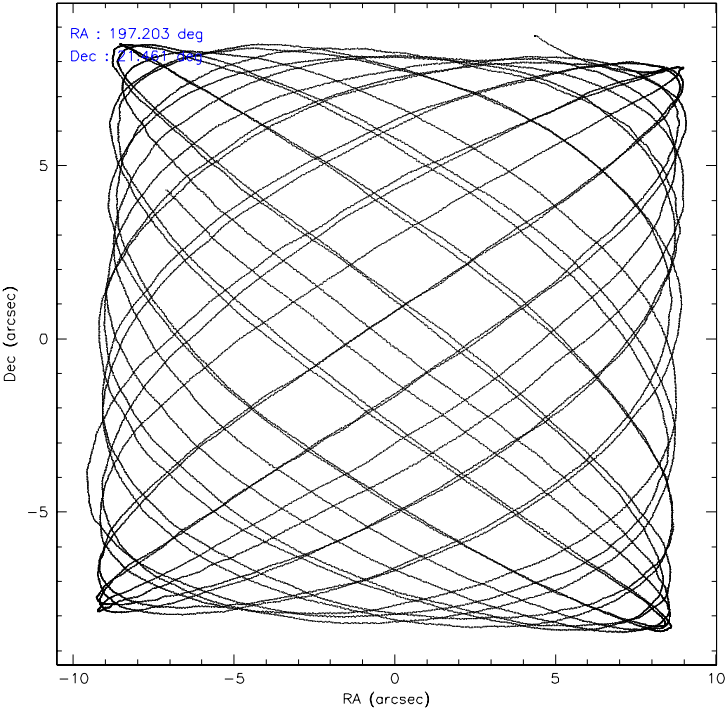
	<b>ccd 7</b>
level 1 events	88436
rejected events	13941
rejected %	15%

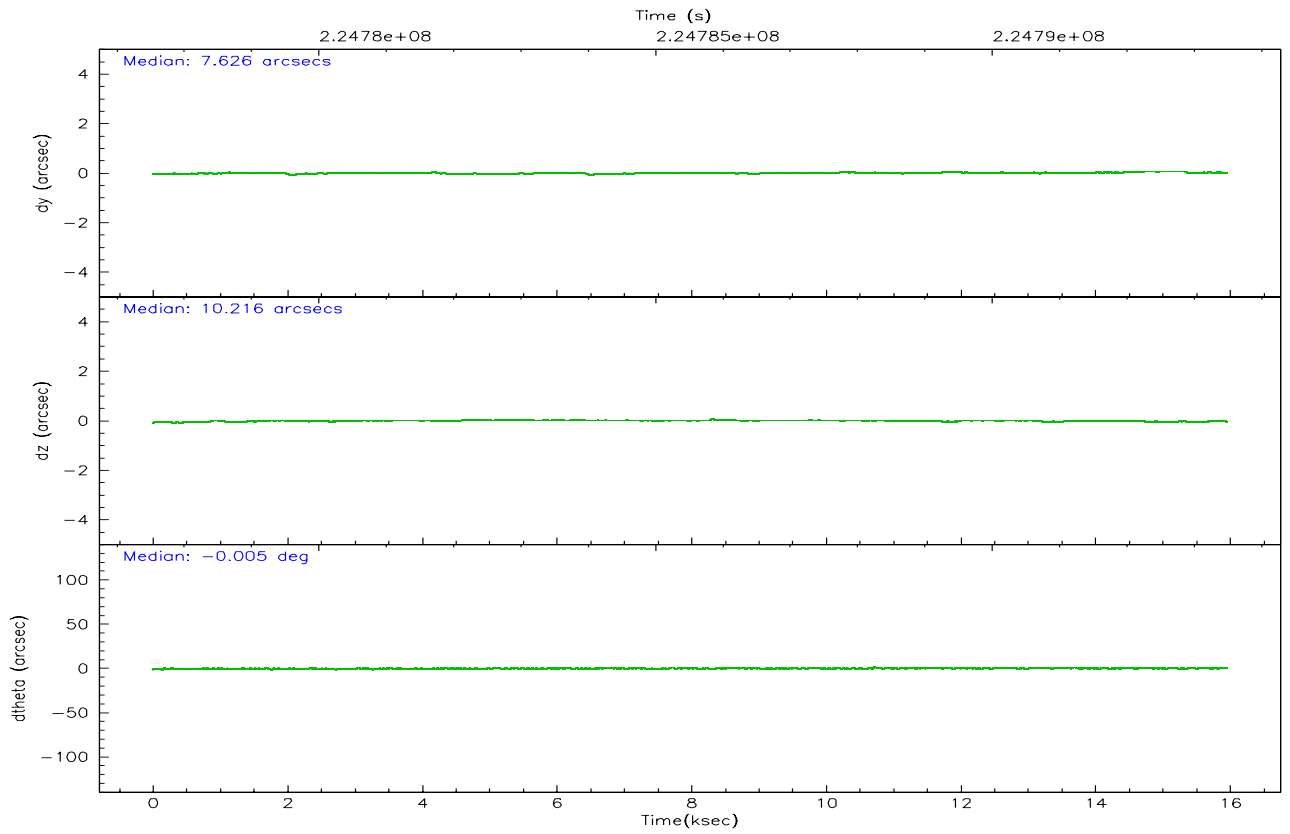
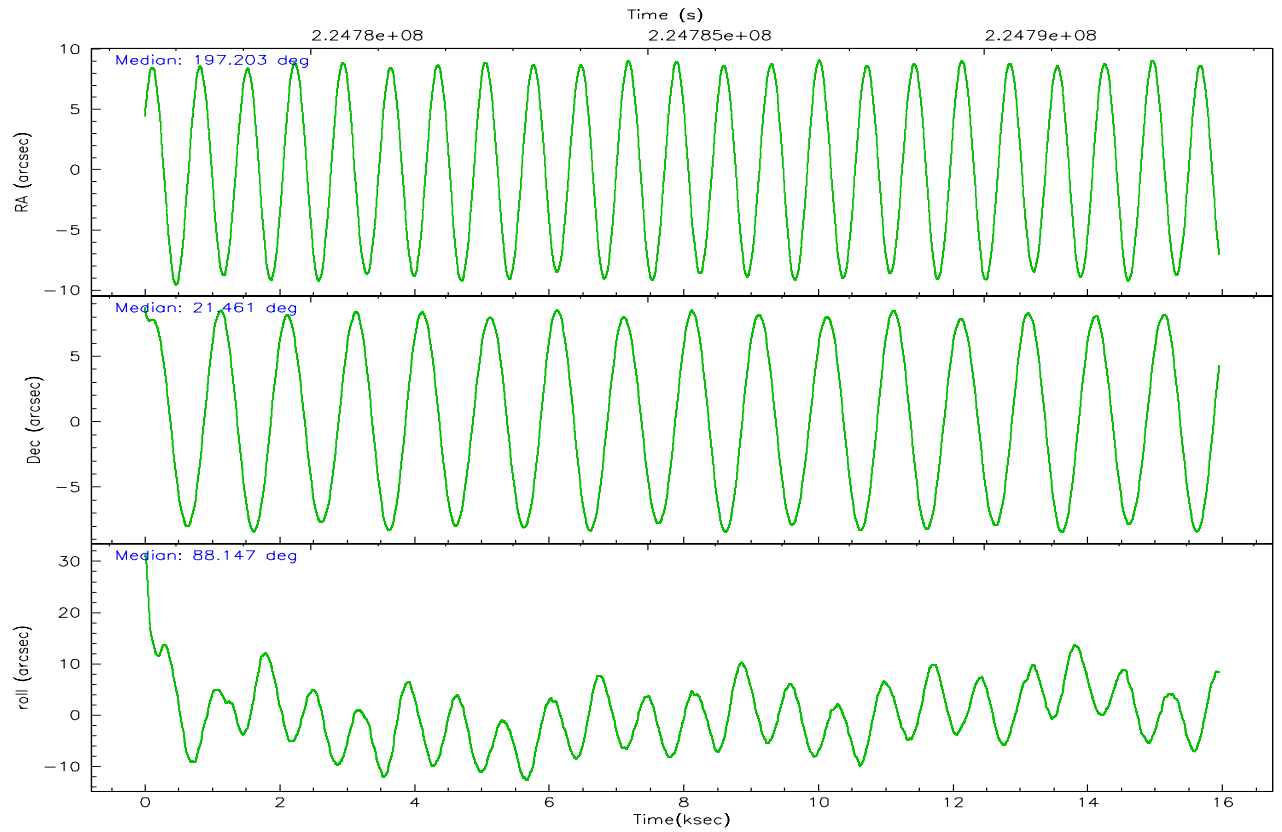
	<b>ccd 7</b>
grade 0 events	8535
	9%
grade 1 events	154
	0%
grade 2 events	19670
	22%
grade 3 events	3597
	4%
grade 4 events	3465
	3%
grade 5 events	11870
	13%
grade 6 events	41145
	46%
grade 7 events	0
	0%

## 2.2 Compared Parameters

Parameter	Planned	Actual	Parameter	Planned	Actual
Instrument	ACIS	ACIS	Obspar format version number	6	6
Detector	ACIS-7	ACIS-7	Obspar file type	PREDICTED	ACTUAL
Grating	NONE	NONE	Obspar update status	NONE	UPDATED
Data mode	CC33_FAINT	CC33_FAINT	On-chip summing requested	N	N
Observation mode	POINTING	POINTING	Subarray requested	NONE	NONE
Pointing RA	197.217552	197.2034093433778	Alternating exposures requested	N	N
Pointing Dec	21.437519	21.46133037477291	Primary exposure time	0.000000	0
Pointing Roll	87.994044	88.15584910868768			
SIM focus pos (mm)	-0.684267	-0.6828225247311905			
SIM defocus (mm)	0	0.001444936568705701			
SIM translation stage pos (mm)	-190.132523	-190.1400660498719			
SIM translation stage offset (mm)	0	0.00754346686406393			
Observation start time	224777719.184000	224777031.63594			
Observation start date	2005-02-14T14:14:15	2005-02-14T14:03:51			
Observation end time	224793489.184000	224793869.8242			
Observation end date	2005-02-14T18:37:05	2005-02-14T18:44:29			
Read mode	CONTINUOUS	CONTINUOUS			

2.3 Aspect





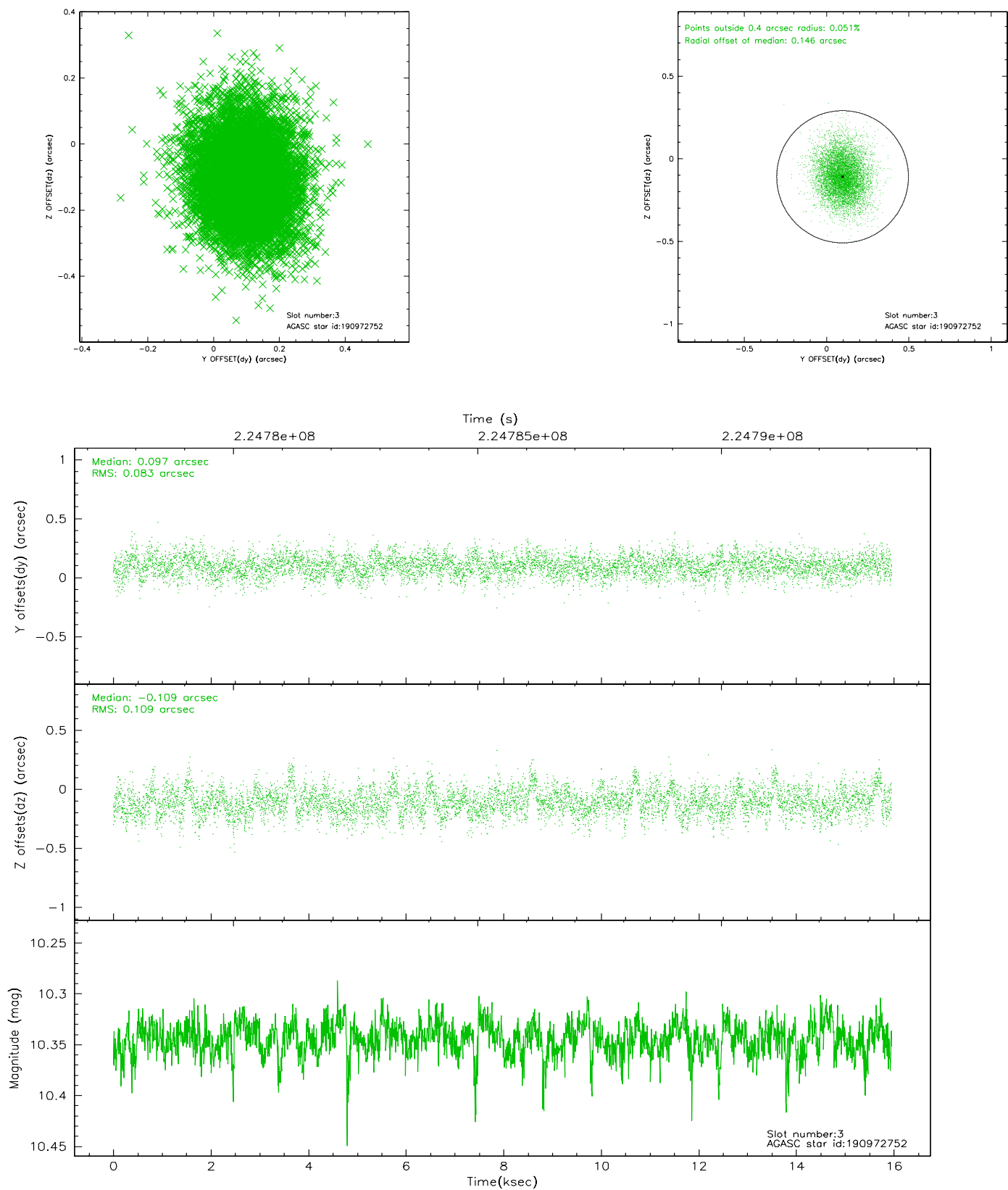
### Slot Statistics

slot	status	id	mag	n_pts	med_dy	med_dz	dr1	dr2	ra	dec	mean_y	mean_z
0	FID	ACIS-S-2	7.11	3892	-0.033	0.005	0.008	0.013	0.000000	0.000000	-760.39	-1731.48
1	FID	ACIS-S-4	7.21	3890	0.052	0.015	0.007	0.013	0.000000	0.000000	2152.81	176.80
2	FID	ACIS-S-5	7.23	3892	-0.050	-0.011	0.007	0.011	0.000000	0.000000	-1812.94	170.66
3	GUIDE	190972752	10.34	7774	0.097	-0.109	0.145	0.241	197.567107	21.351082	-268.06	-1181.87
4	GUIDE	190973928	9.83	7774	-0.177	0.066	0.148	0.236	197.904188	21.564389	542.48	-2280.68
5	GUIDE	190974376	6.81	7784	-0.239	0.142	0.088	0.141	197.884749	21.918670	1814.24	-2165.76
6	GUIDE	190979840	10.35	7777	0.161	-0.043	0.288	0.442	197.337465	20.846267	-2112.27	-478.27
7	GUIDE	190971944	10.06	7779	0.160	-0.040	0.147	0.259	197.963793	22.064478	2349.49	-2408.60

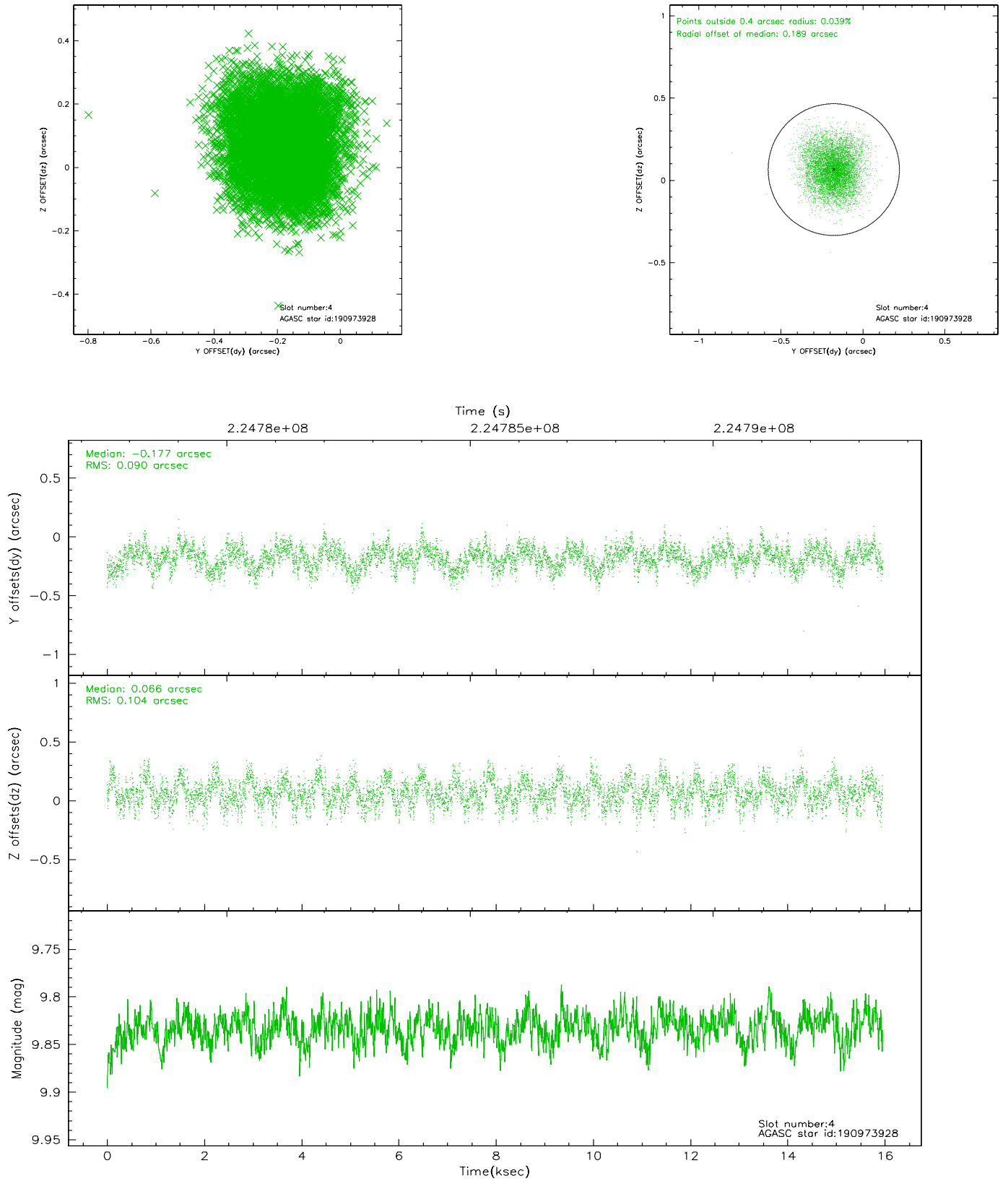


## 2.4 Star Slots

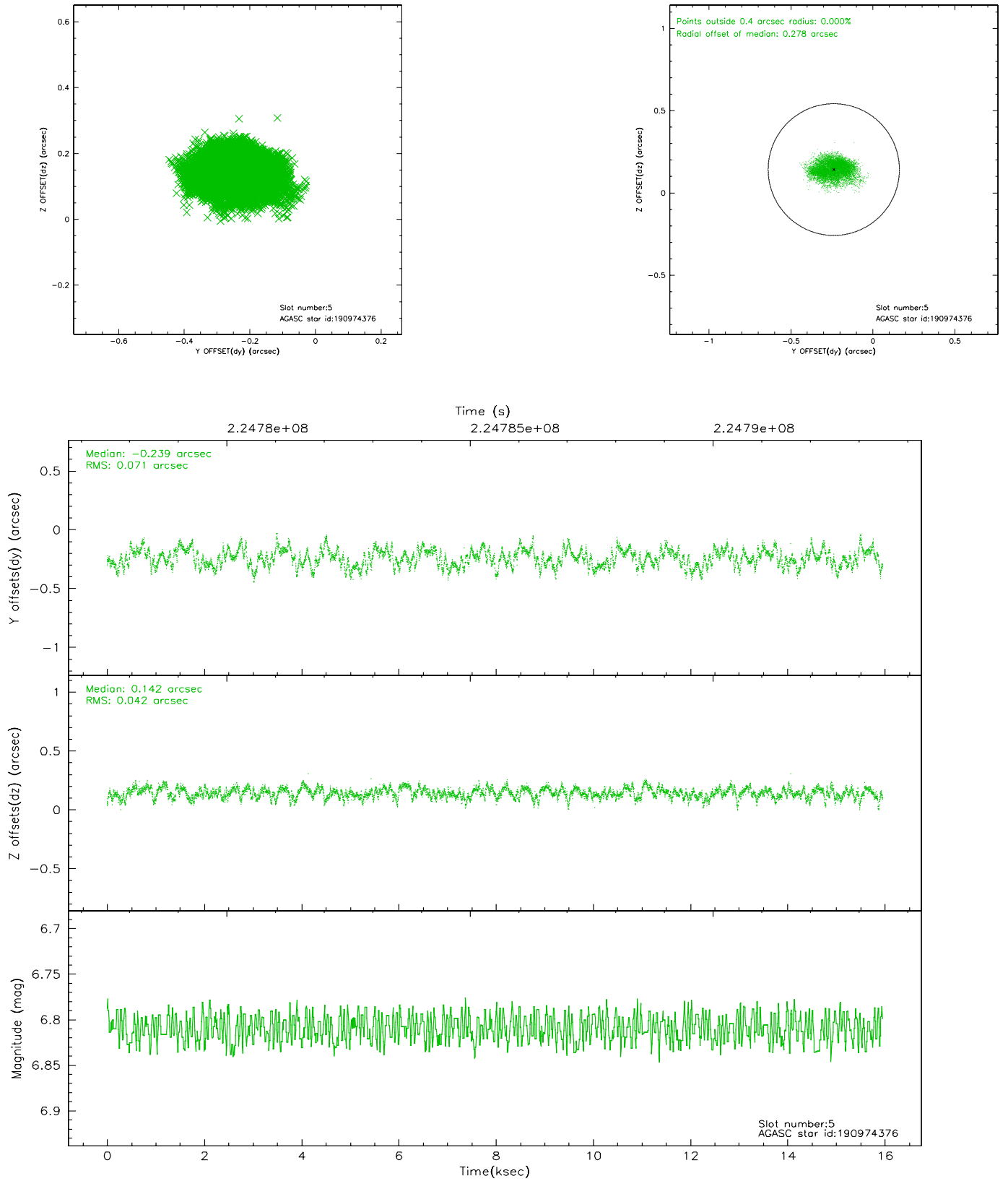
### 2.4.1 Slot 3



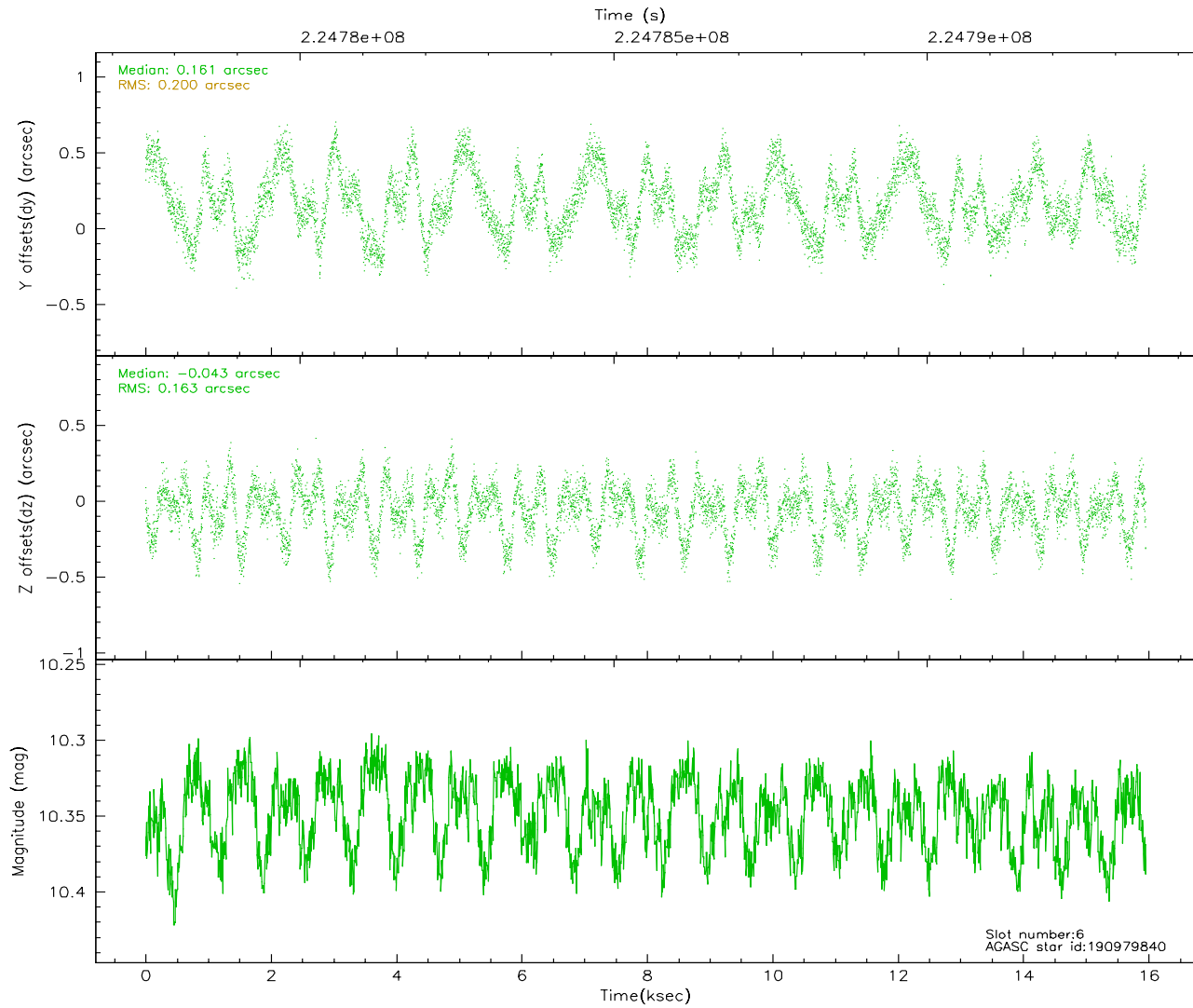
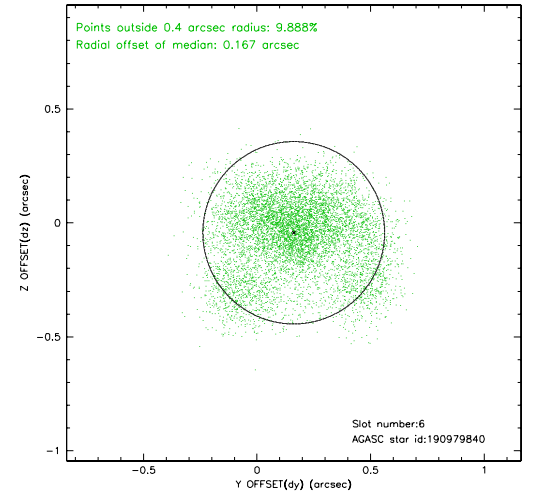
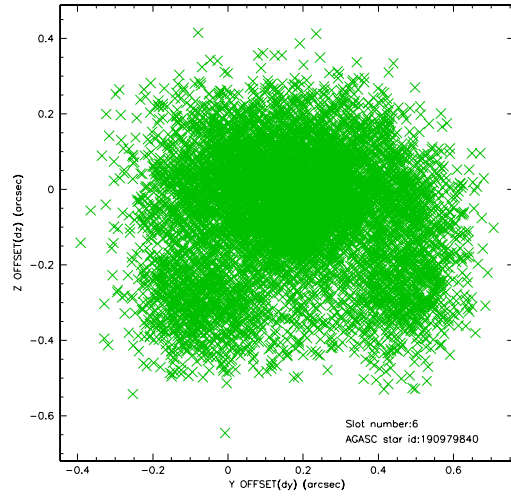
## 2.4.2 Slot 4



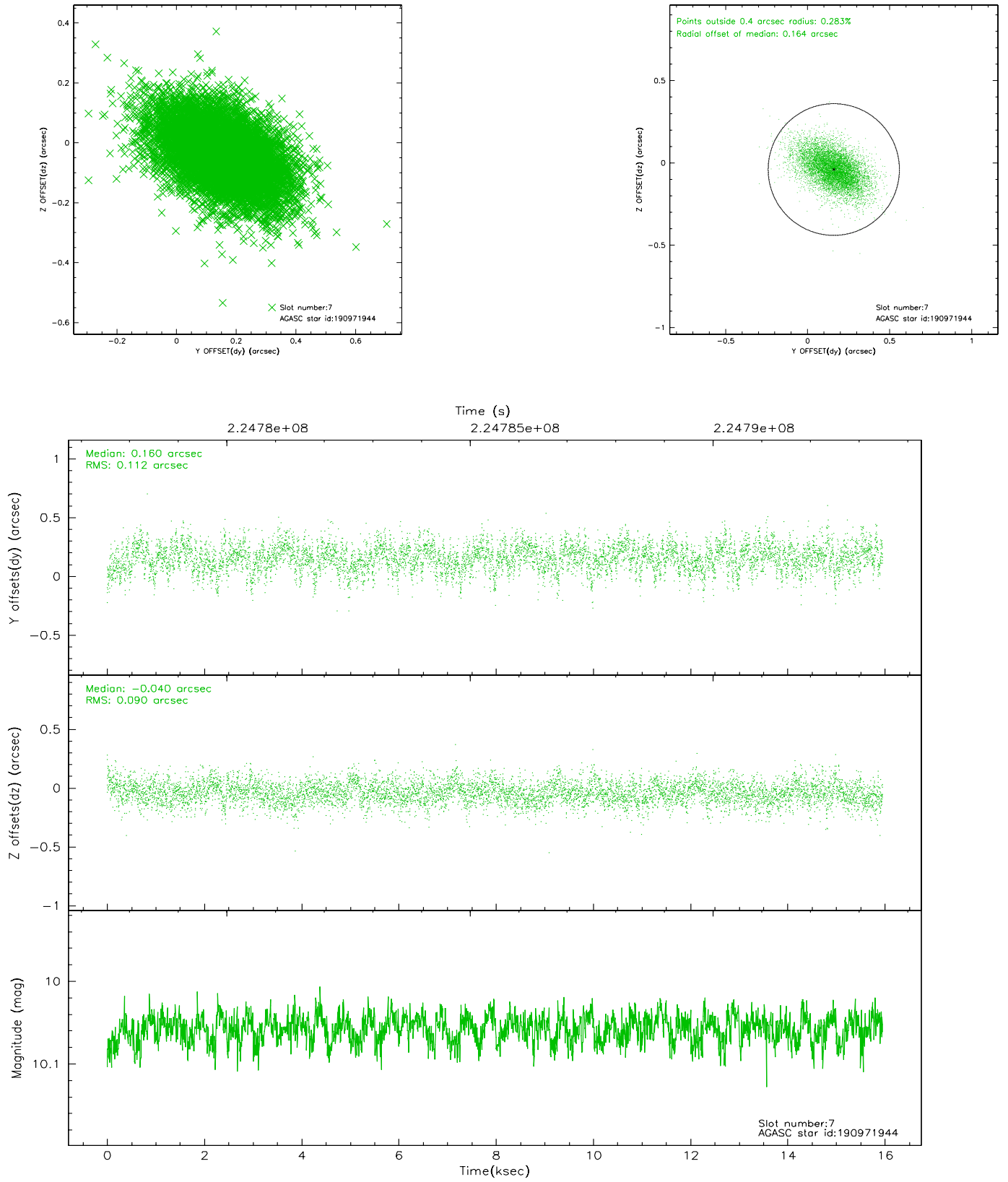
### 2.4.3 Slot 5



## 2.4.4 Slot 6

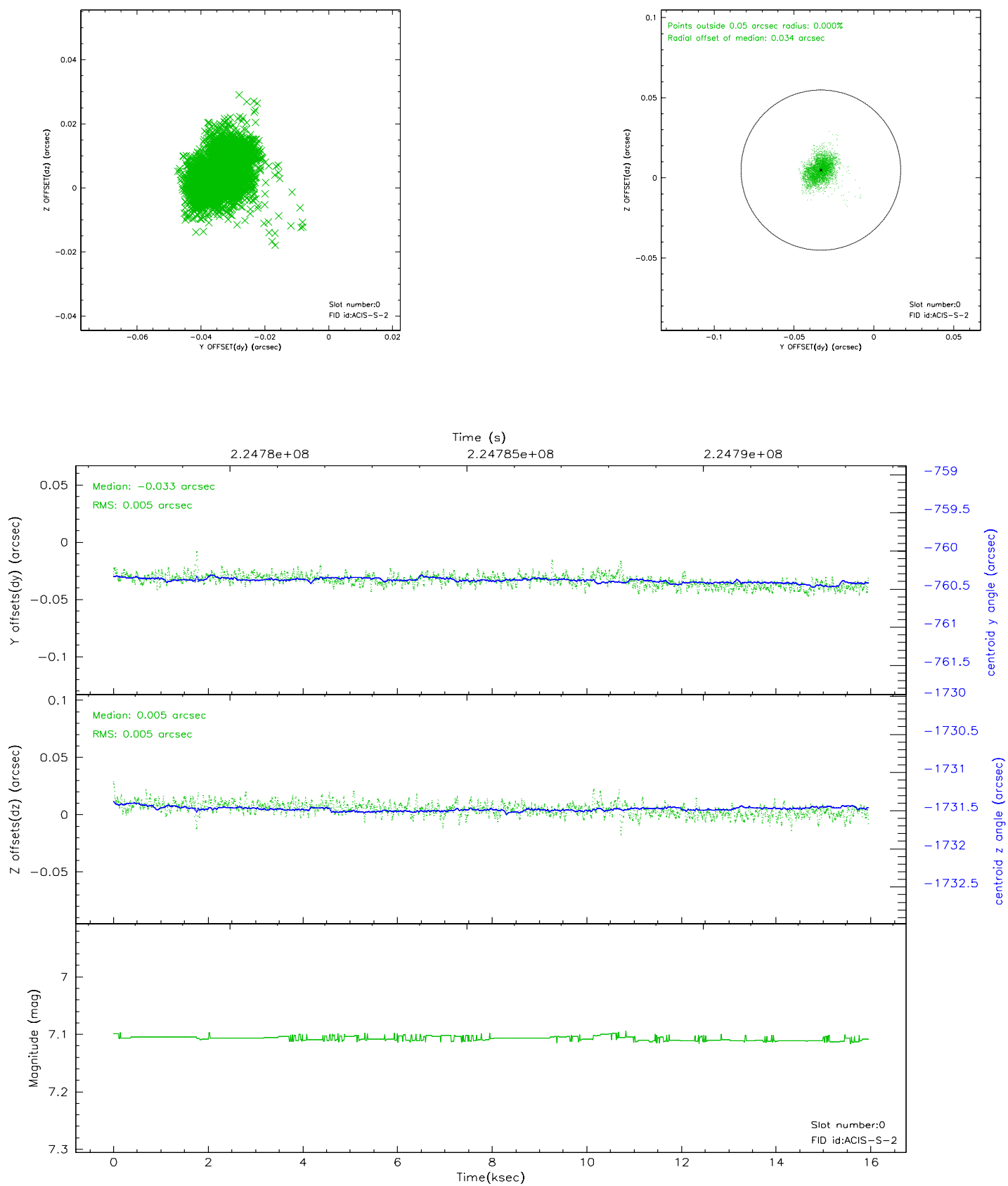


## 2.4.5 Slot 7

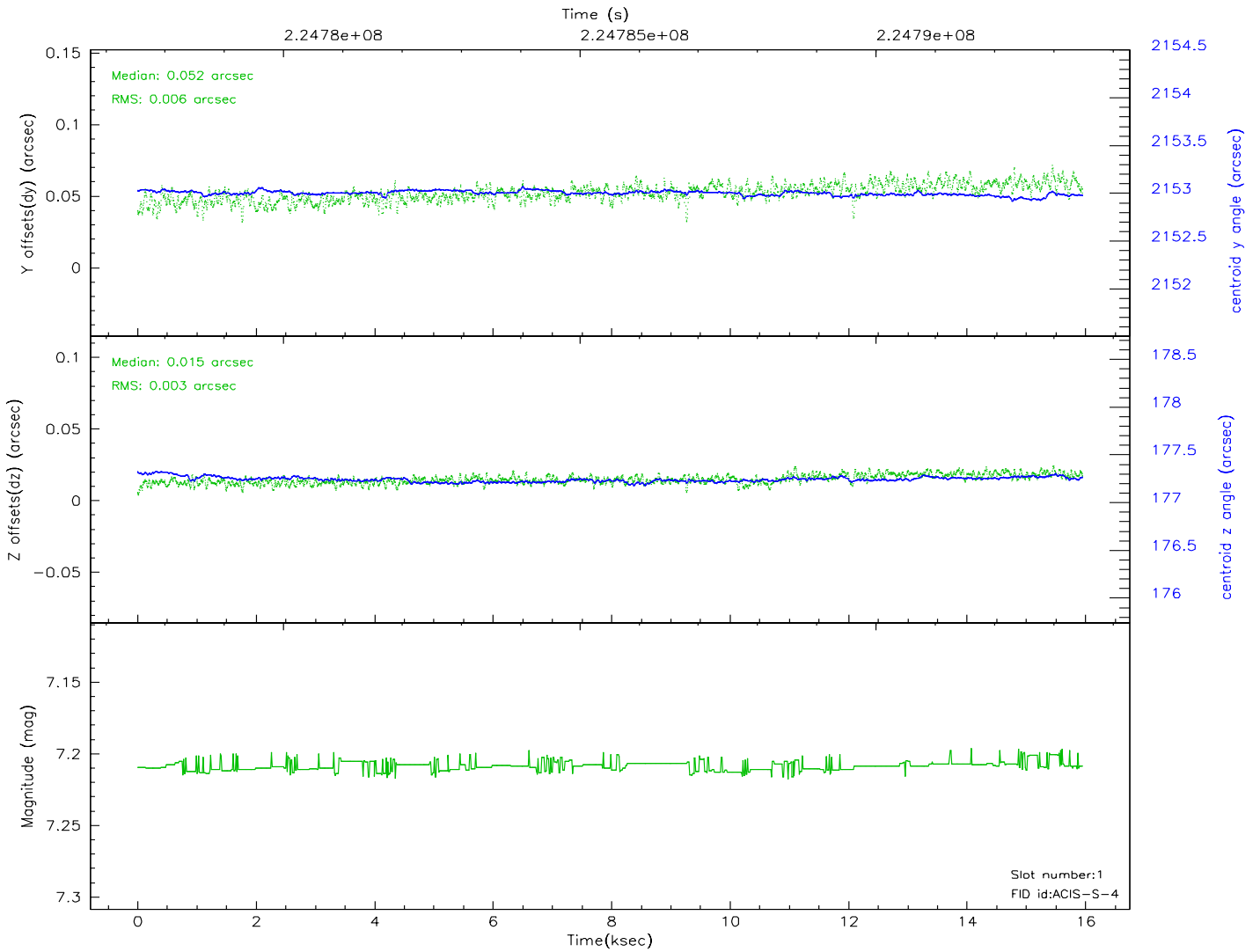
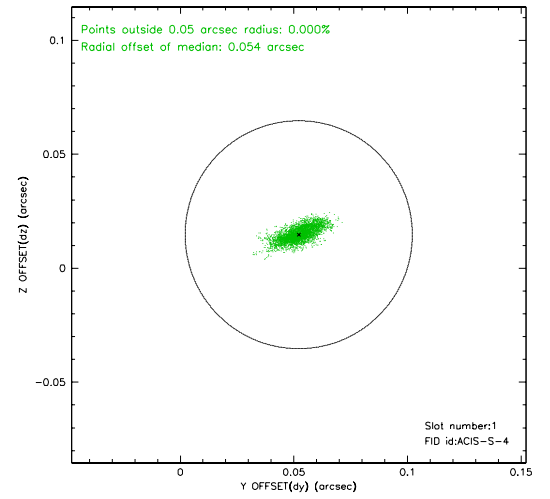
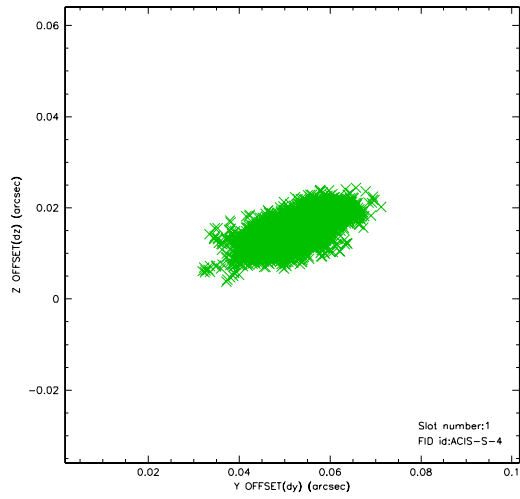


## 2.5 FID Slots

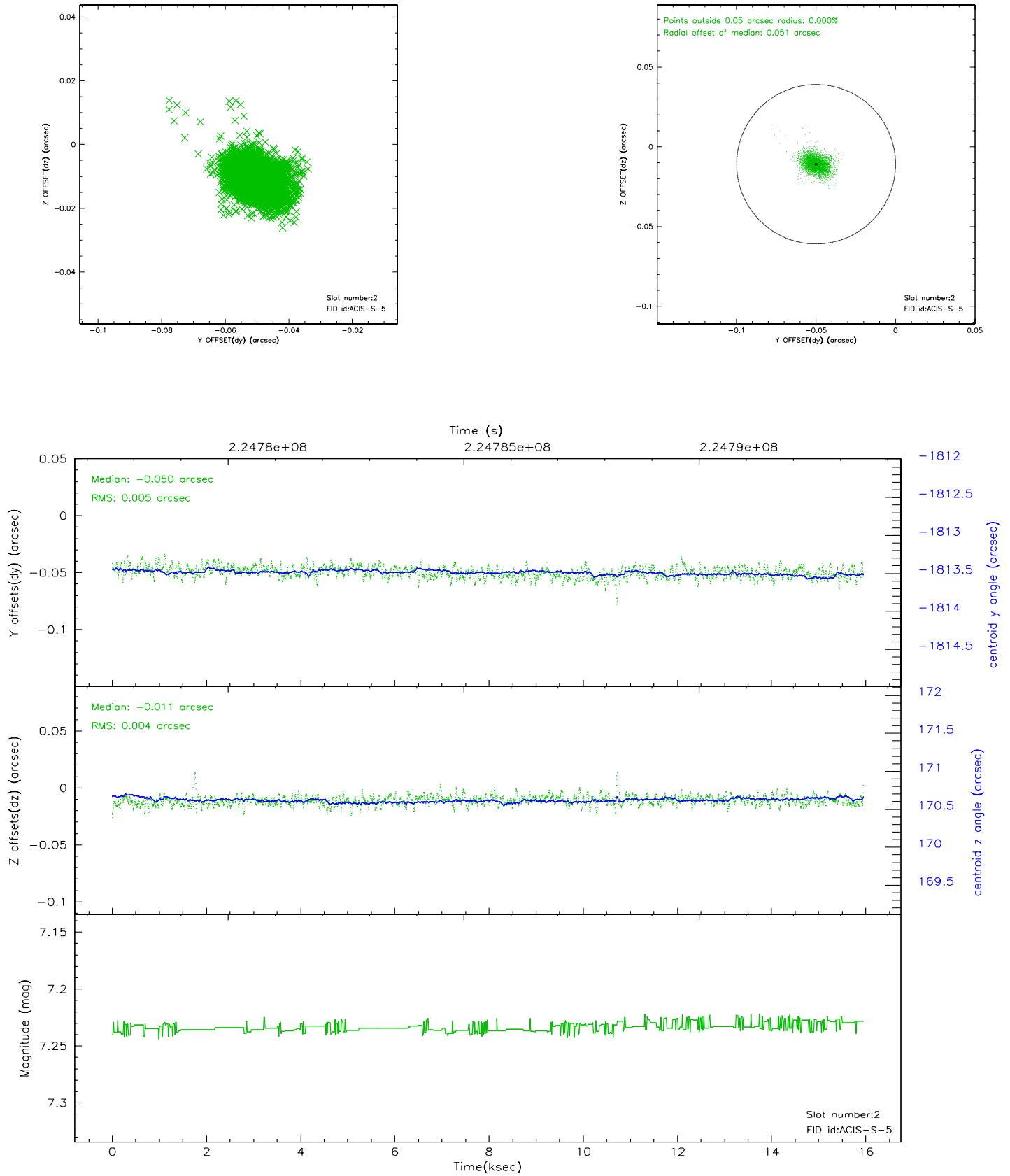
### 2.5.1 Slot 0



## 2.5.2 Slot 1



### 2.5.3 Slot 2





## A Summary

### A.1 Status

V&V Scientist	Beth Sundheim
V&V Date (YYYY-MM-DD)	2006.08.21
V&V Edition	1
V&V Disposition and Status	OK
V&V Charge Time	15.95525

### A.2 Comments