

V&V Reference Report

L2 ASCDS Version : 7.6.7.1

Observation 6192 - L2 Version 3
Chandra X-Ray Center

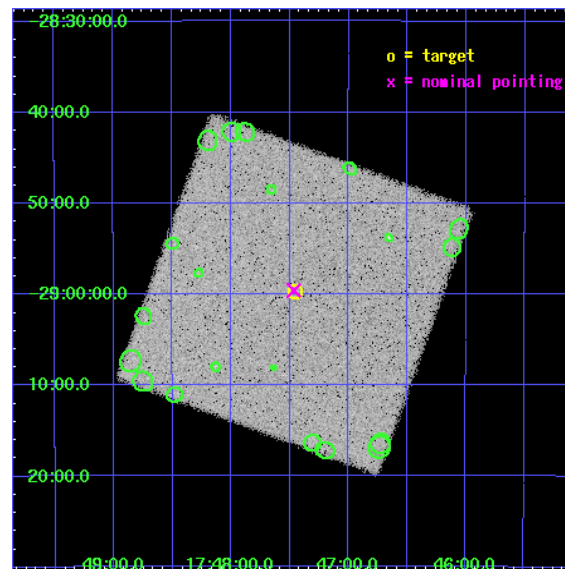
L2 Processing Date : Nov 24 2007

Contents

1	Front	2
2	OBI	3
2.1	OBI	3
2.1.1	Images	3
2.1.2	Parameters	4
2.1.3	Events	4
2.2	Compared Parameters	5
2.3	Aspect	6
2.4	Star Slots	9
2.4.1	Slot 3	9
2.4.2	Slot 4	10
2.4.3	Slot 5	11
2.4.4	Slot 6	12
2.4.5	Slot 7	13
2.5	FID Slots	14
2.5.1	Slot 0	14
2.5.2	Slot 1	15
2.5.3	Slot 2	16
3	Point Sources	17
A	Summary	18
A.1	Status	18
A.2	Comments	18

1 Front

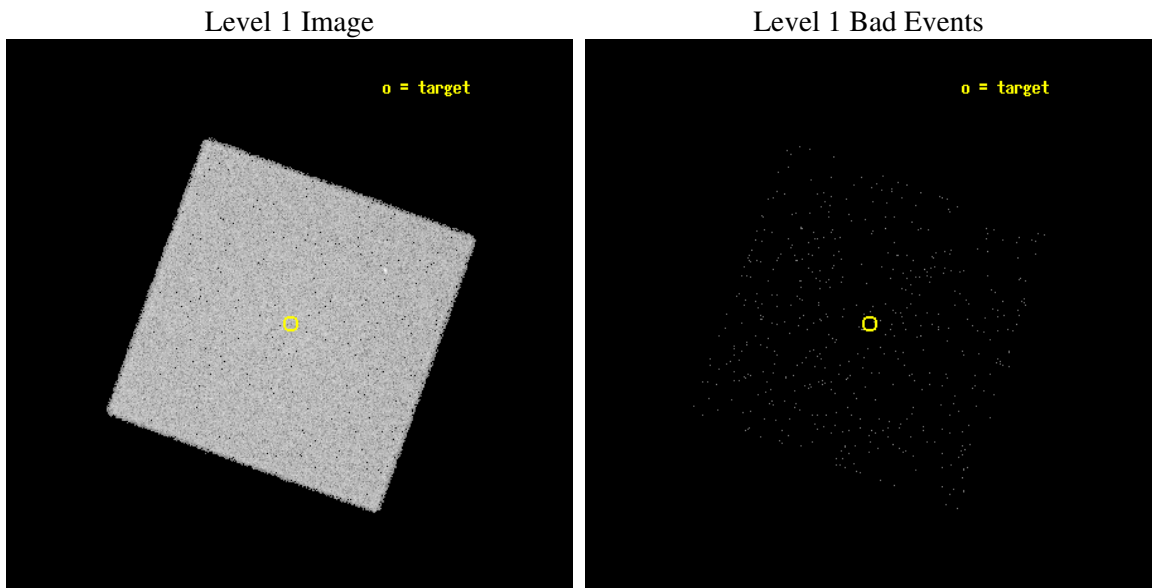
seq_num	400452
obs_id	6192
title	Monitoring observations of the Galactic Center region
observer	Dr. Rudy Wijnands
object	GC-3
ra_targ	266.8625
dec_targ	-28.996111
ra_nom	266.86612576527
dec_nom	-28.993488124676
roll_nom	65.012151947995
revision	3
ontime	5175.4814861715
livetime	5139.2224638653
l2events	194465



2 OBI

2.1 OBI

2.1.1 Images



2.1.2 Parameters

obi_num	0
ascdsver	7.6.11.2
caldbver	3.4.1
date	2007-11-24T14:41:27
revision	3

sched_exp_time	5000.000000
ontime	5175.4814861715
l1events	308478

2.1.3 Events

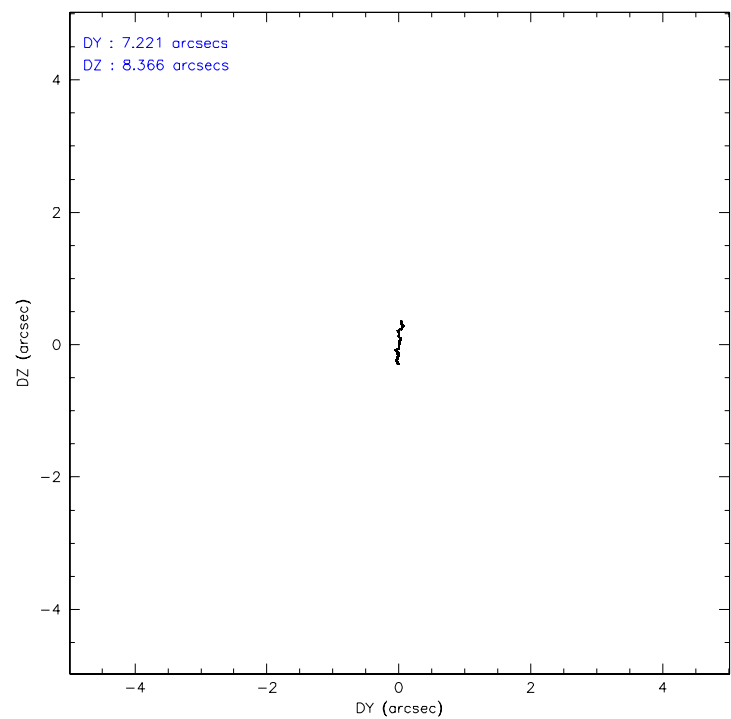
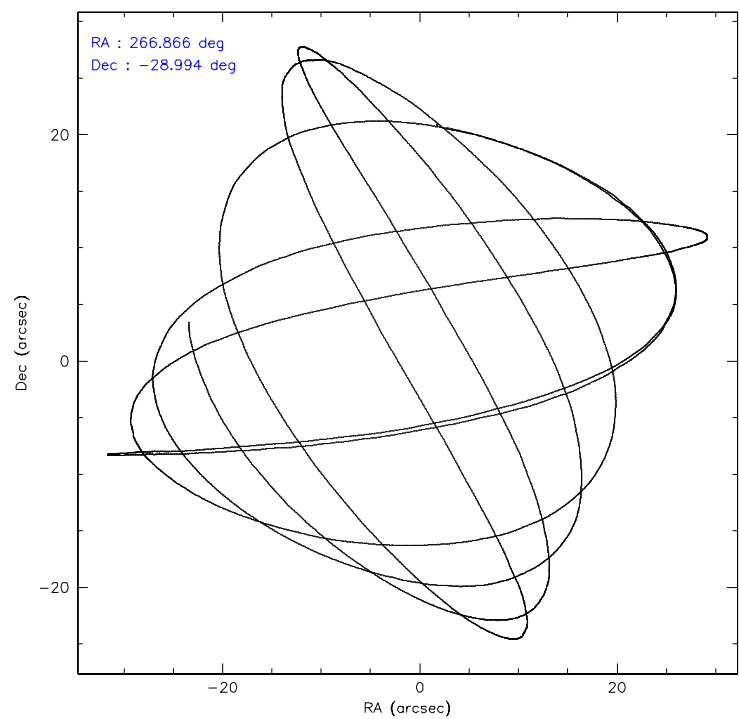
Level 1 Events

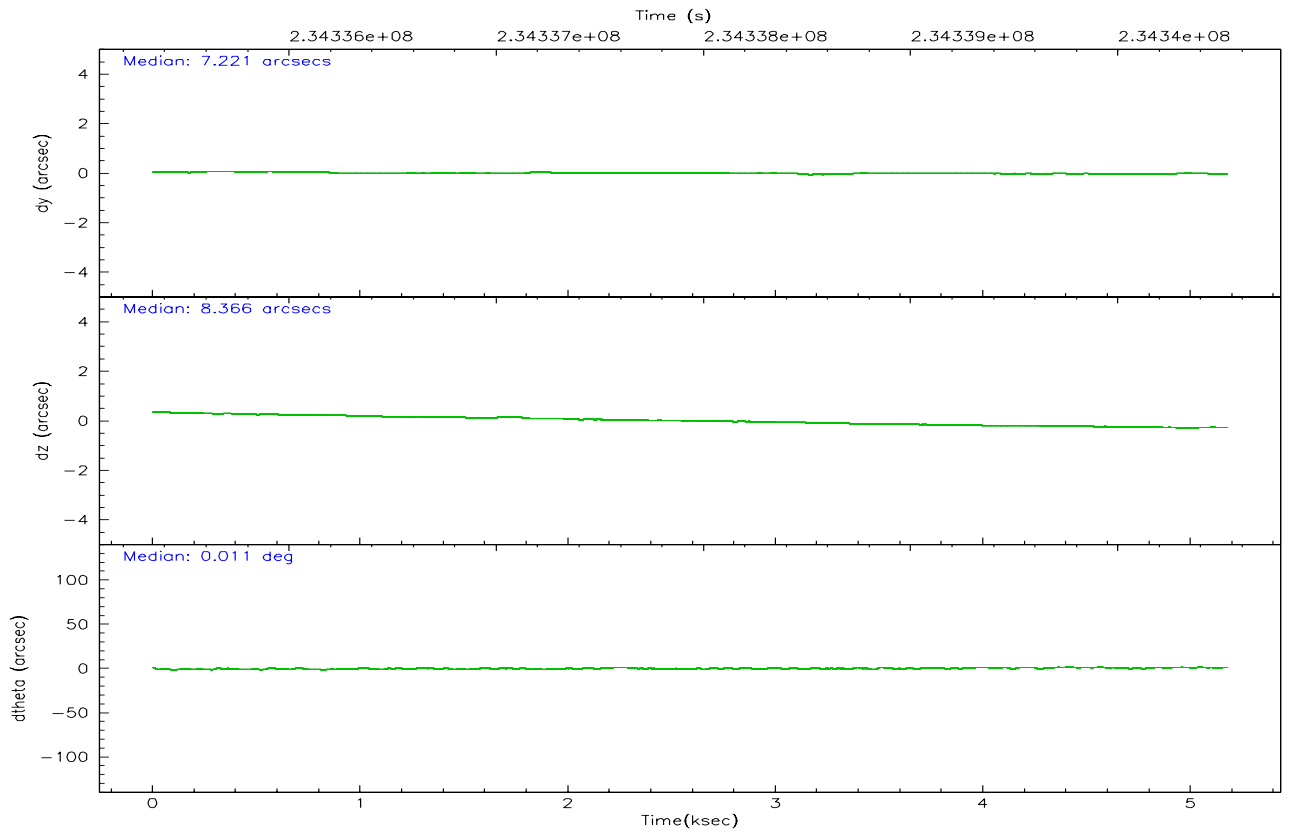
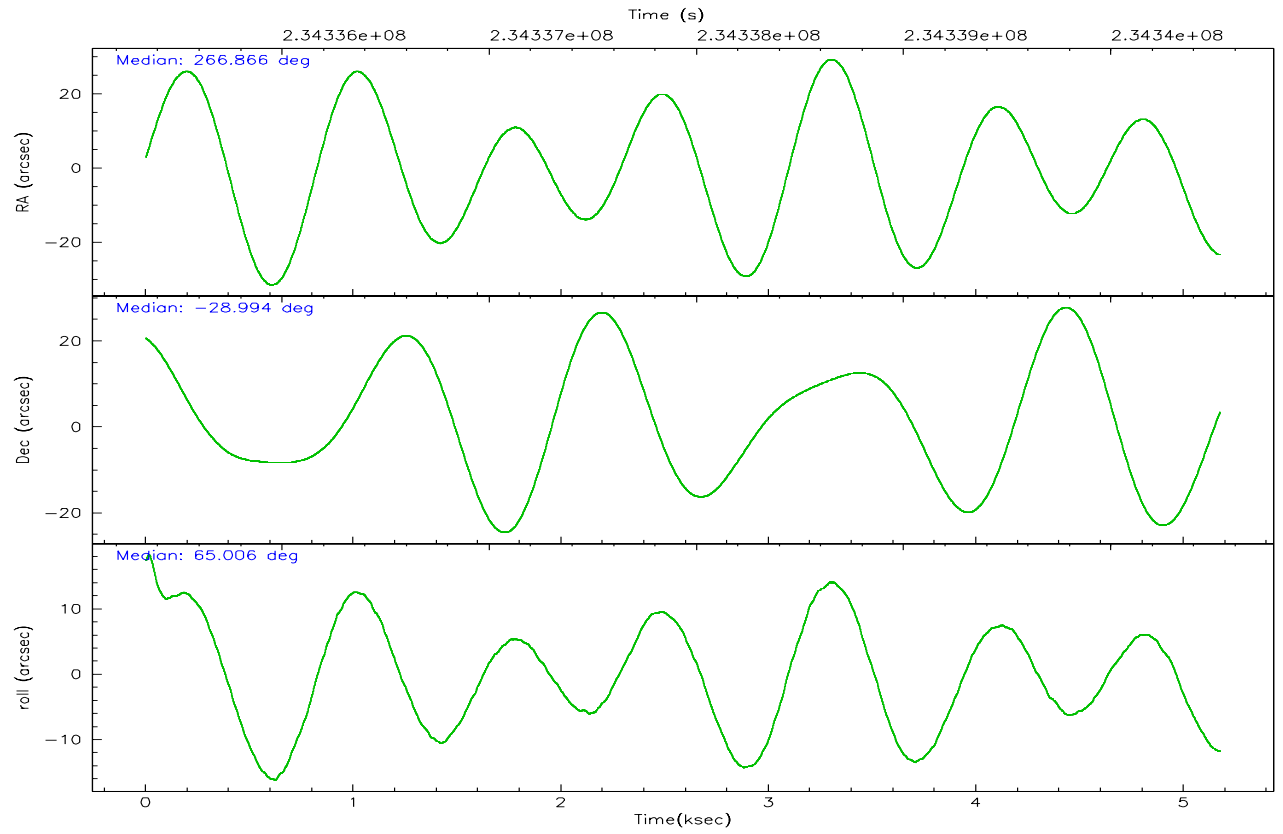
	segment 0
level 1 events	308478
rejected events	18693
rejected %	6%

2.2 Compared Parameters

Parameter	Planned	Actual	Parameter	Planned	Actual
Instrument	HRC	HRC	Obspar format version number	6	6
Detector	HRC-I	HRC-I	Obspar file type	PREDICTED	ACTUAL
Grating	NONE	NONE	Obspar update status	NONE	UPDATED
Data mode	OBSERVING	OBSERVING			
Observation mode	POINTING	POINTING			
Pointing RA	266.869442	266.8661257652724			
Pointing Dec	-29.020243	-28.99348812467556			
Pointing Roll	65.109248	65.01215194799539			
SIM focus pos (mm)	-1.040293	-1.038866356238299			
SIM defocus (mm)	0	0.001426264420575141			
SIM translation stage pos (mm)	126.985494	126.9829799899862			
SIM translation stage offset (mm)	0	0.002508901615314585			
Observation start time	234335522.184000	234335146.30773			
Observation start date	2005-06-05T05:10:58	2005-06-05T05:05:46			
Observation end time	234340522.184000	234340656.19548			
Observation end date	2005-06-05T06:34:18	2005-06-05T06:37:36			

2.3 Aspect



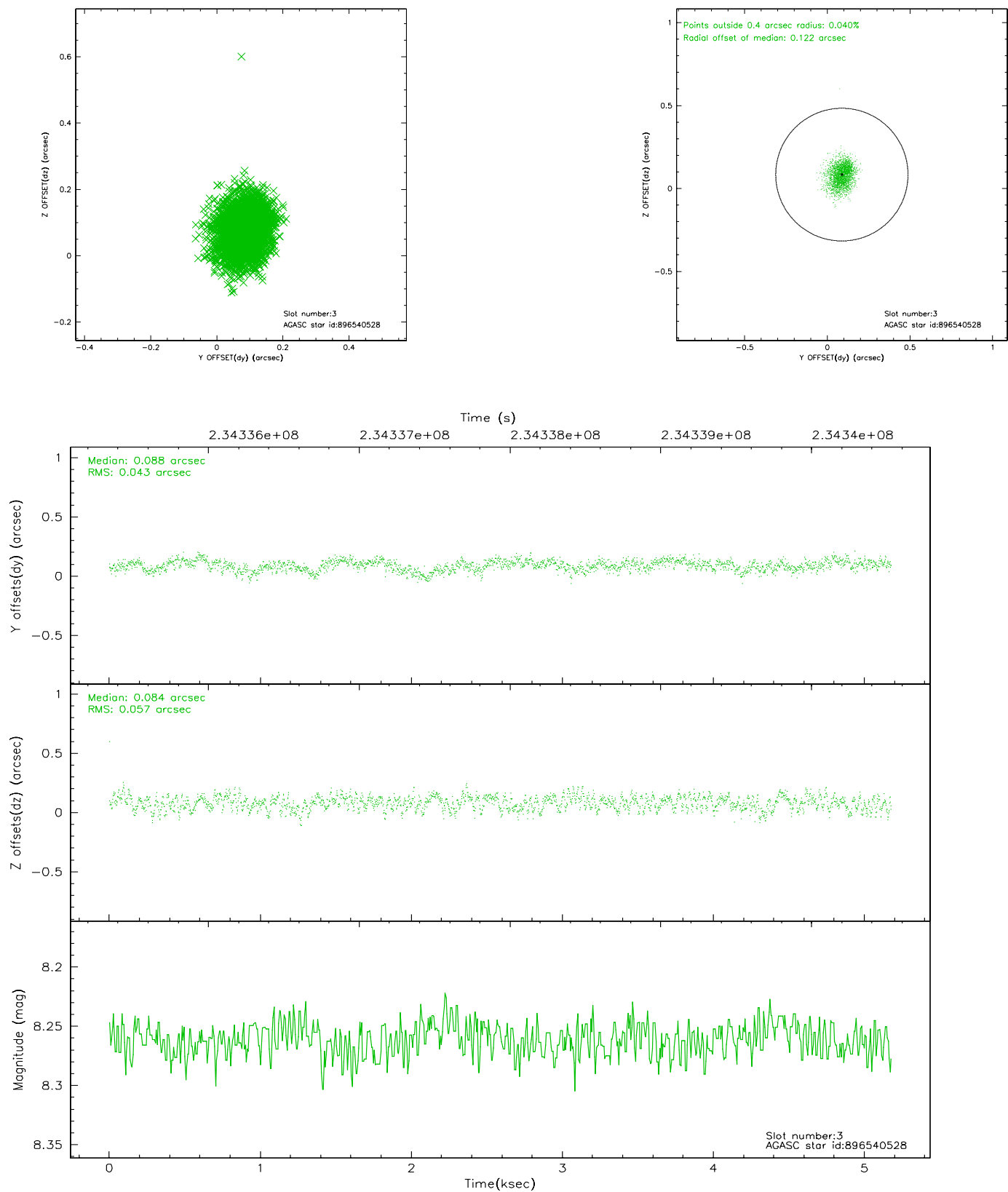


Slot Statistics

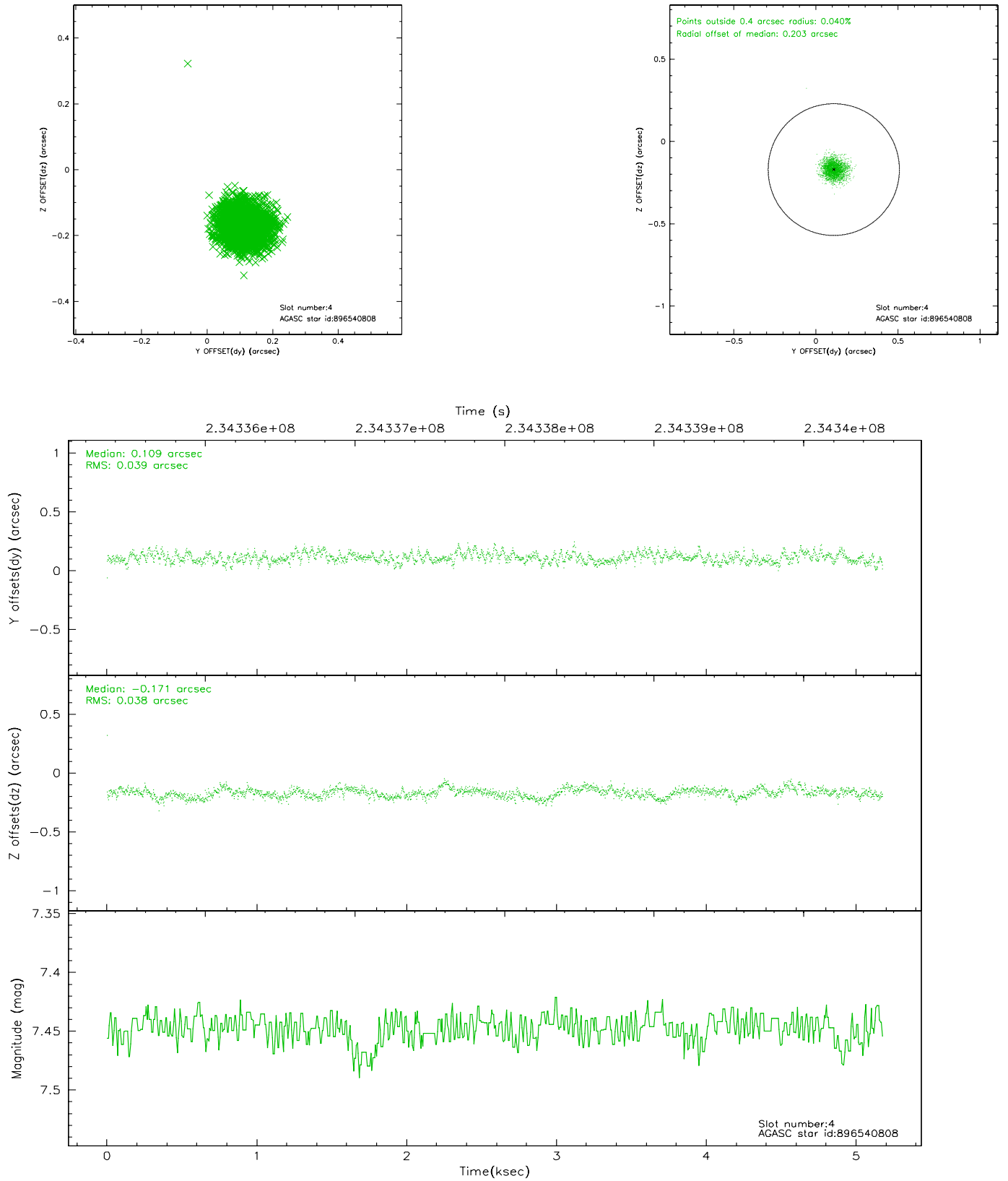
slot	status	id	mag	n_pts	med_dy	med_dz	dr1	dr2	ra	dec	mean_y	mean_z
0	FID	HRC-I-1	7.00	1263	0.035	0.031	0.009	0.015	0.000000	0.000000	-762.83	-1296.19
1	FID	HRC-I-3	7.08	1263	-0.053	-0.081	0.011	0.020	0.000000	0.000000	-1191.92	1007.25
2	FID	HRC-I-4	7.04	1263	0.131	-0.039	0.006	0.010	0.000000	0.000000	1279.21	1006.62
3	GUIDE	896540528	8.26	2525	0.088	0.084	0.076	0.124	267.368305	-29.314773	-305.00	-1867.63
4	GUIDE	896540808	7.45	2526	0.109	-0.171	0.057	0.093	265.985401	-29.308604	-2119.01	2075.72
5	GUIDE	896541360	7.72	2526	0.106	0.199	0.061	0.099	266.684478	-29.453744	-1660.37	-129.52
6	GUIDE	896534664	8.20	2524	-0.169	-0.169	0.077	0.123	266.405570	-28.407461	1379.70	2260.41
7	GUIDE	896543712	8.27	2525	-0.123	0.064	0.079	0.127	267.764551	-28.659720	2358.89	-2021.33

2.4 Star Slots

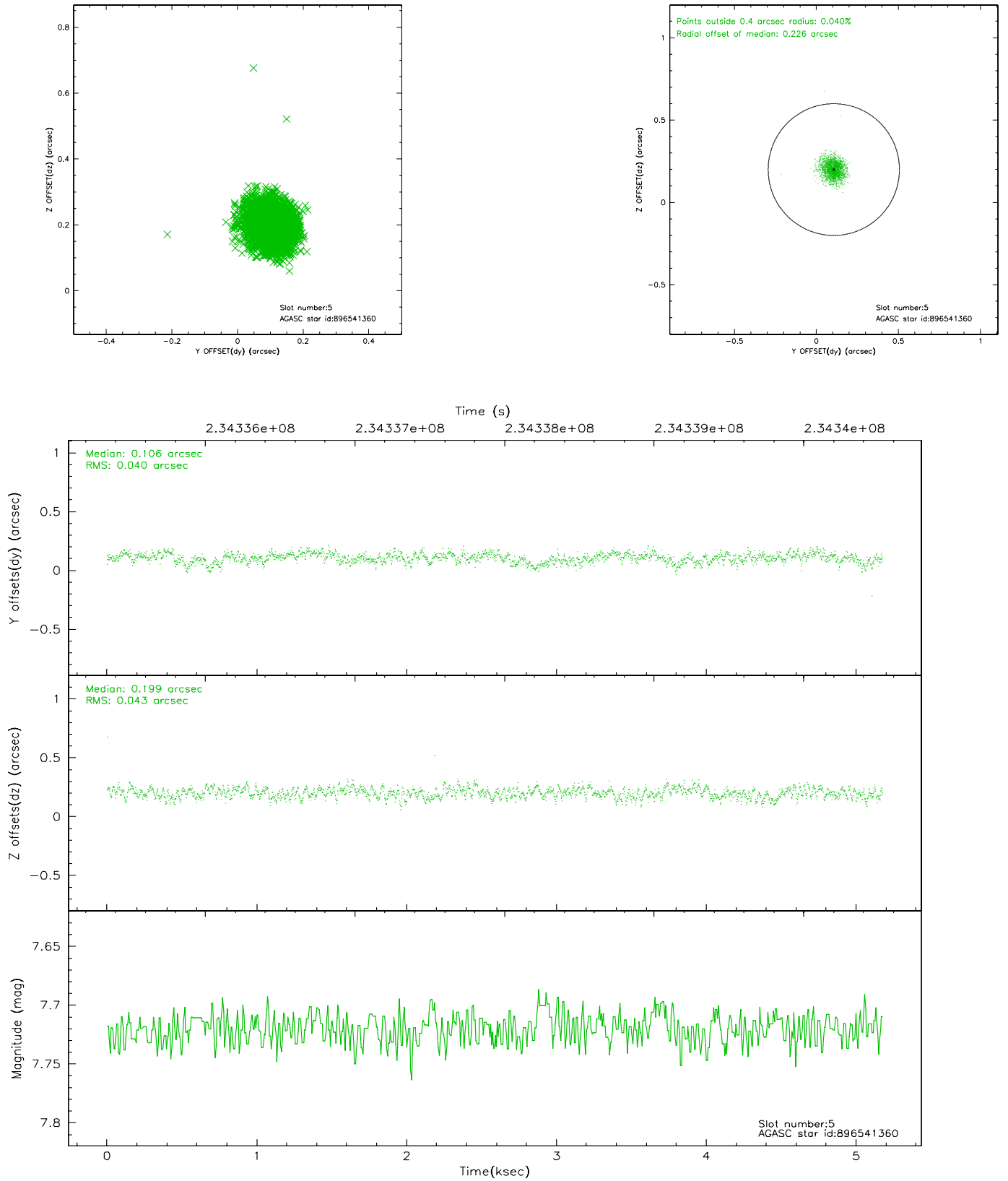
2.4.1 Slot 3



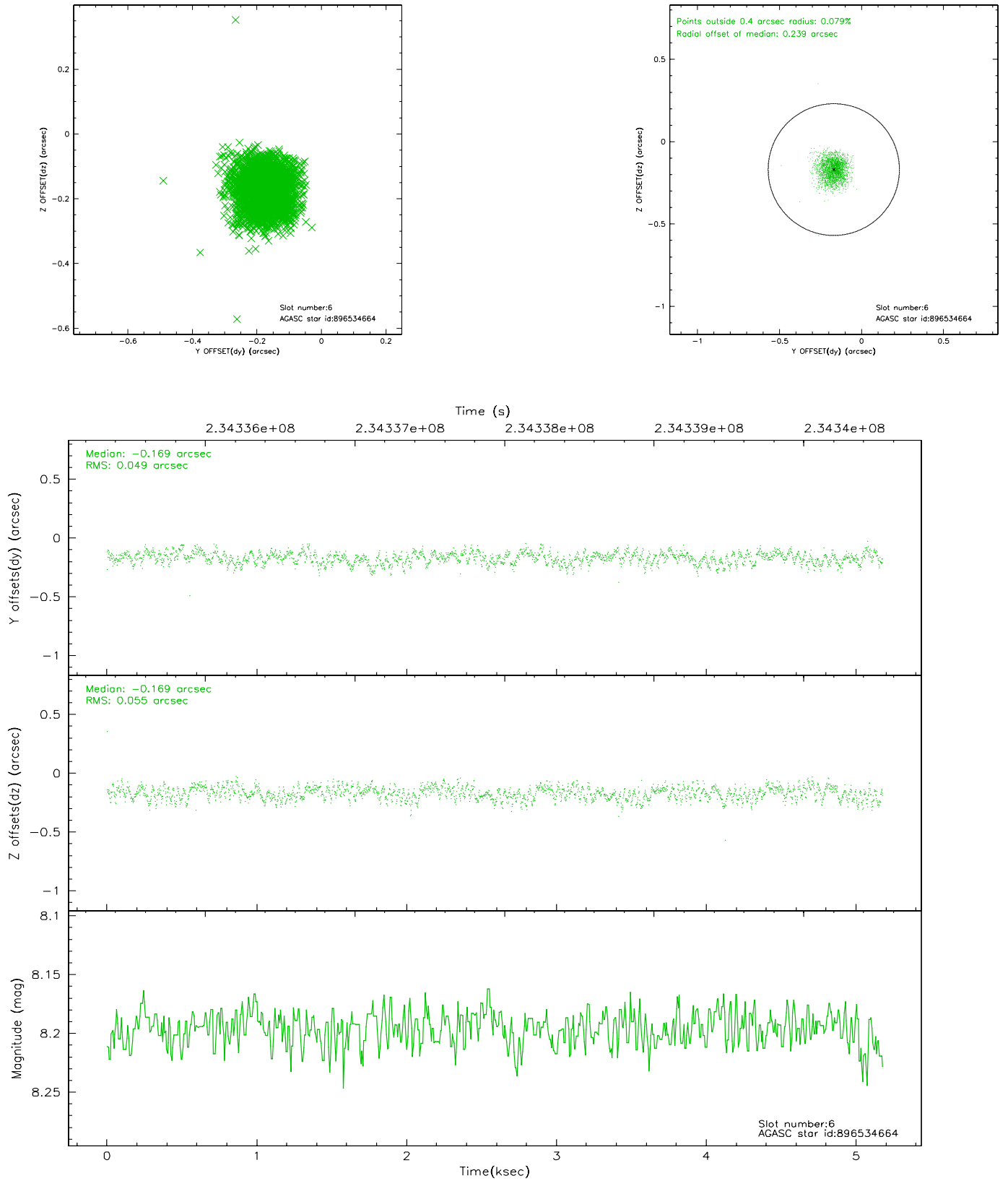
2.4.2 Slot 4



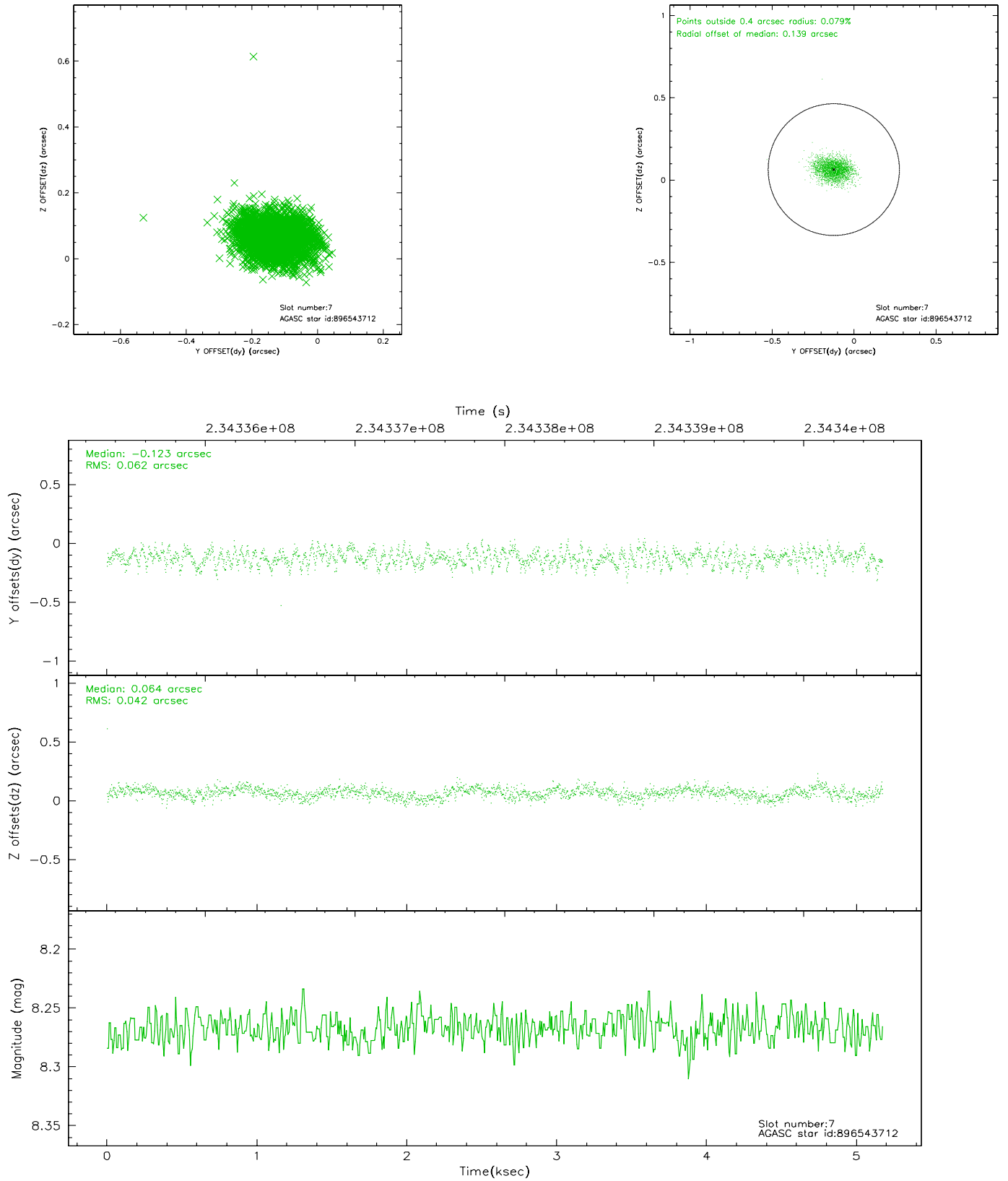
2.4.3 Slot 5



2.4.4 Slot 6

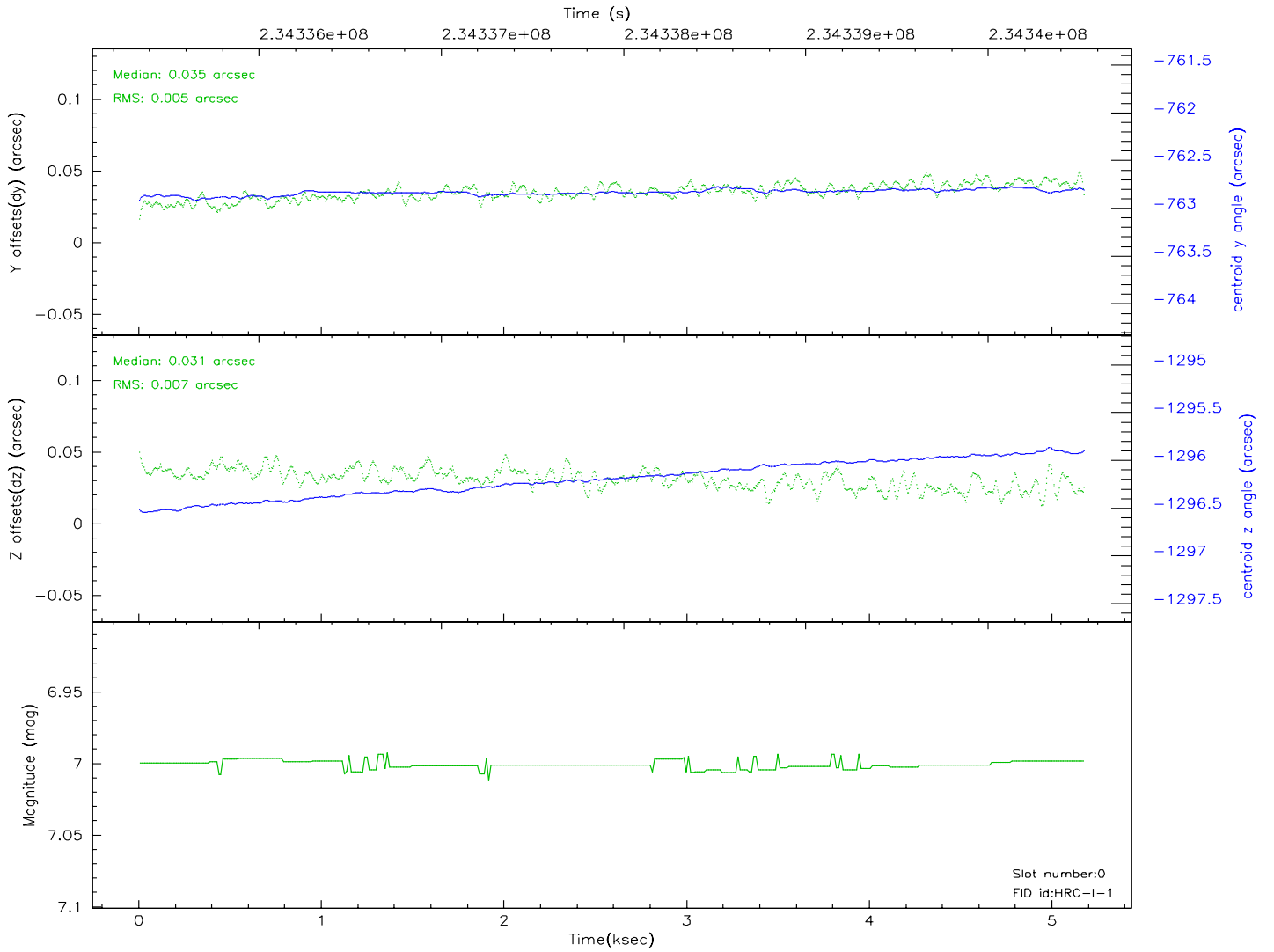
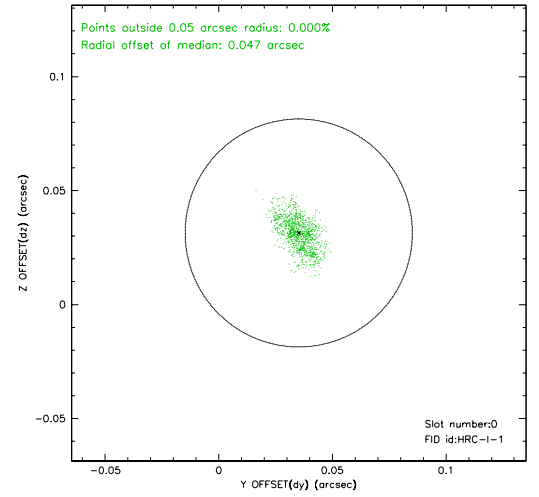
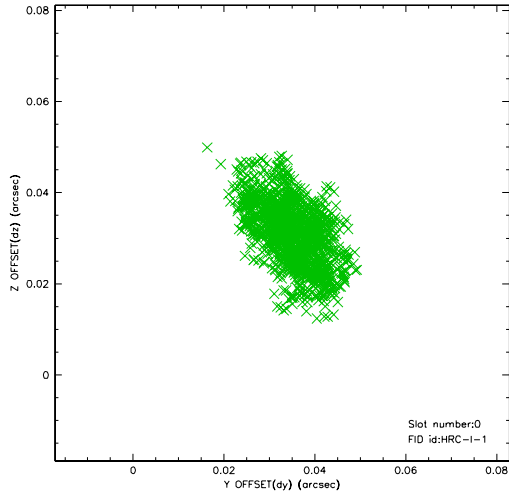


2.4.5 Slot 7

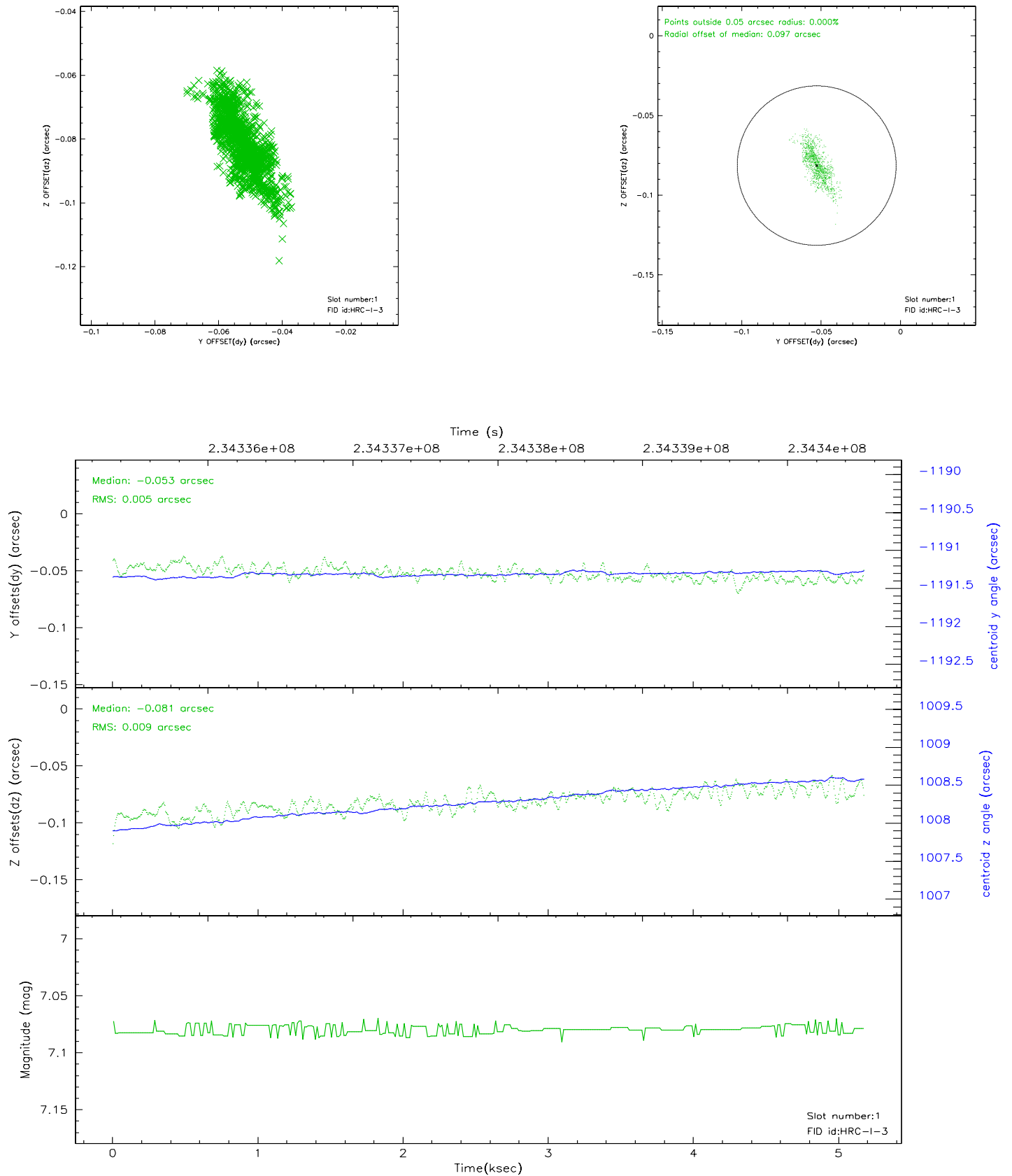


2.5 FID Slots

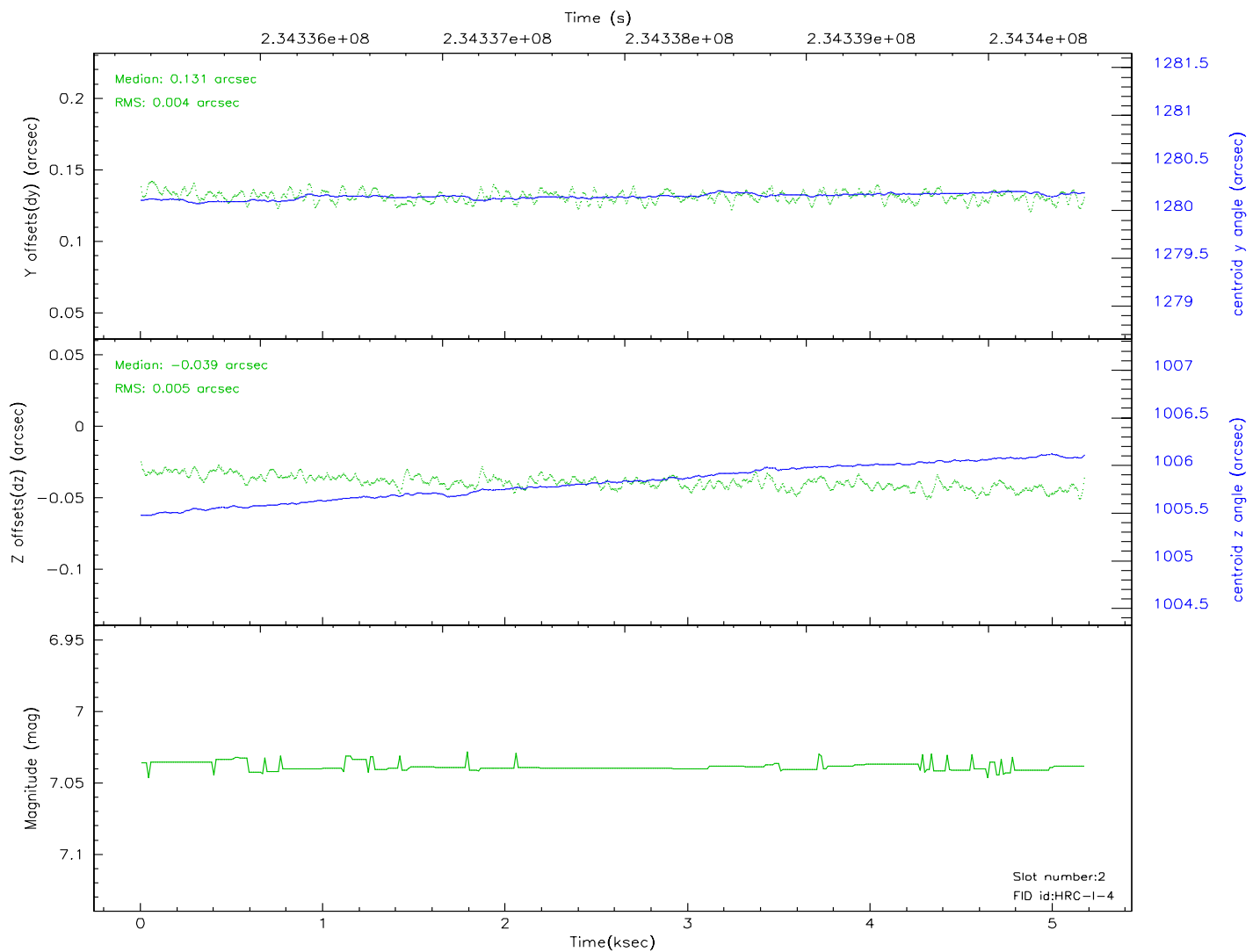
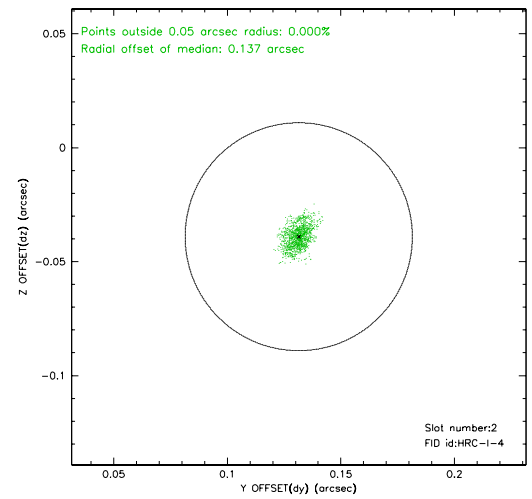
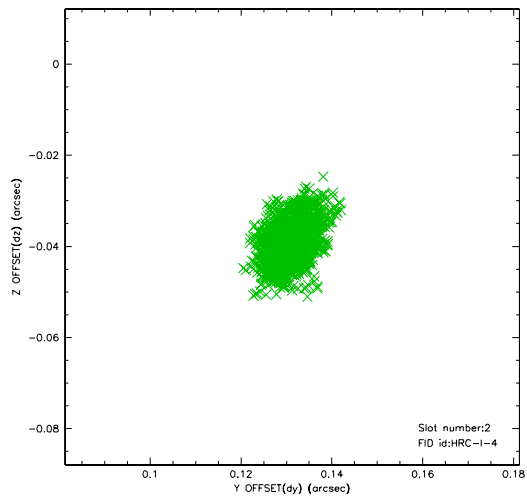
2.5.1 Slot 0



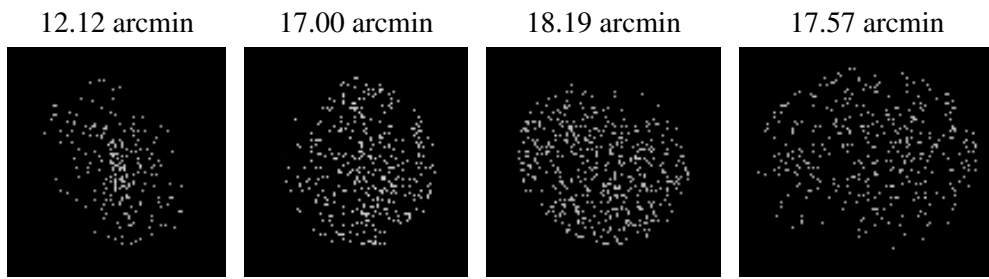
2.5.2 Slot 1



2.5.3 Slot 2



3 Point Sources



A Summary

A.1 Status

V&V Scientist	Beth Sundheim
V&V Date (YYYY-MM-DD)	2007.12.06
V&V Edition	1
V&V Disposition and Status	OK
V&V Charge Time	5.175225

A.2 Comments

The current observation has been reprocessed as part of Repro III ('C' supplement) the purpose of which is to update all HRC-I ObsIDs since Jan 2000 to the latest calibrations available for that configuration. Specifically, we are updating the DEGAP solution and the Gain Maps applied. For more information see the Repro IIIC web page at:

<http://asc.harvard.edu/cda/repro3.html#IIIC>

and the associated links.