

# V&V Reference Report

## L2 ASCDS Version : 7.6.7

Observation 6180 - L2 Version 002  
Chandra X-Ray Center

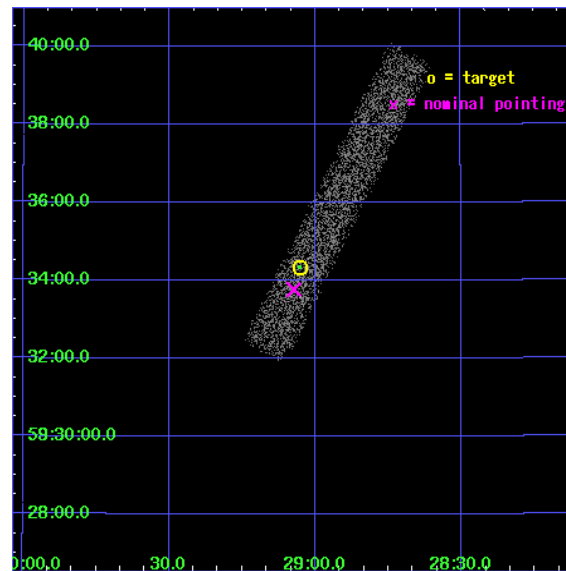
L2 Processing Date: Feb 16 2006

## Contents

<b>1</b>	<b>Front</b>	<b>2</b>
<b>2</b>	<b>OBI</b>	<b>3</b>
2.1	OBI . . . . .	3
2.1.1	Images . . . . .	3
2.1.2	Bias . . . . .	3
2.1.3	Parameters . . . . .	4
2.1.4	Events . . . . .	4
2.2	Compared Parameters . . . . .	5
2.3	Aspect . . . . .	6
2.4	Star Slots . . . . .	9
2.4.1	Slot 3 . . . . .	9
2.4.2	Slot 4 . . . . .	10
2.4.3	Slot 5 . . . . .	11
2.4.4	Slot 6 . . . . .	12
2.4.5	Slot 7 . . . . .	13
2.5	FID Slots . . . . .	14
2.5.1	Slot 0 . . . . .	14
2.5.2	Slot 1 . . . . .	15
2.5.3	Slot 2 . . . . .	16
<b>3</b>	<b>Point Sources</b>	<b>17</b>
<b>A</b>	<b>Summary</b>	<b>18</b>
A.1	Status . . . . .	18
A.2	Comments . . . . .	18

# 1 Front

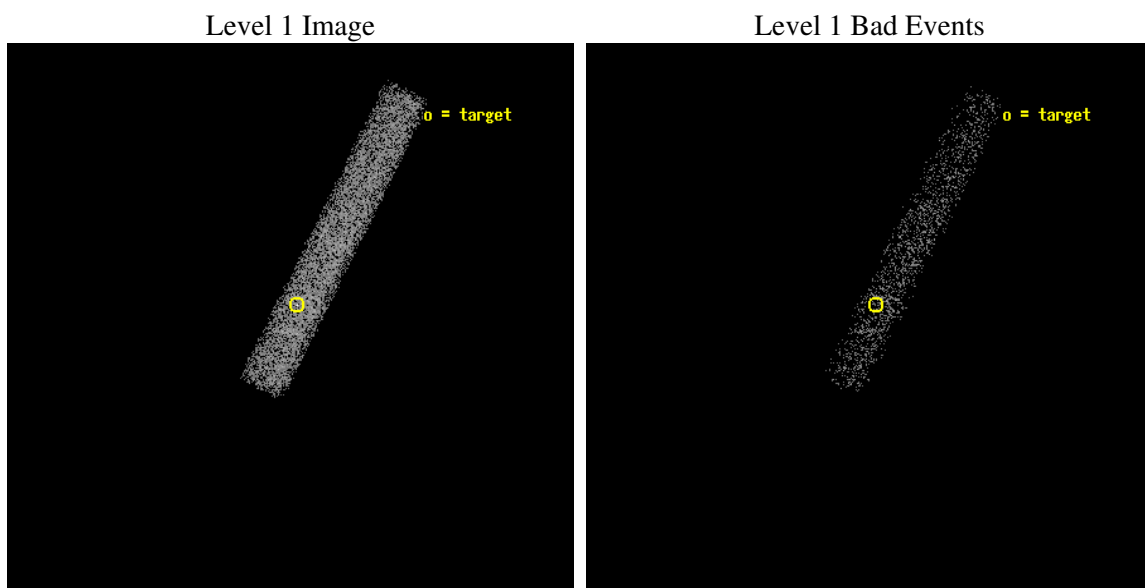
seq_num	400446
obs_id	6180
title	Following the decay of the new accretion powered msec pulsar IGR J00291+5934
observer	Dr Peter Jonker
object	IGR J00291+5934
dtcycle	0
cycle	P
ra_targ	7.262917
dec_targ	59.571944
ra_nom	7.268353991944
dec_nom	59.562676018885
roll_nom	296.55922328764
revision	2
ontime	9894.3591273725
livetime	8973.6614614298
ontime7	9894.3591273725
l2events	5624



## 2 OBI

### 2.1 OBI

#### 2.1.1 Images



#### 2.1.2 Bias

Chip 7



### 2.1.3 Parameters

obi_num	0
ascdsver	7.6.7
caldbver	3.2.1
date	2006-02-17T03:54:06
revision	2

sched_exp_time	9741.534000
ontime	10887.826390922
ontime7	10887.826390922
l1events	15005

### 2.1.4 Events

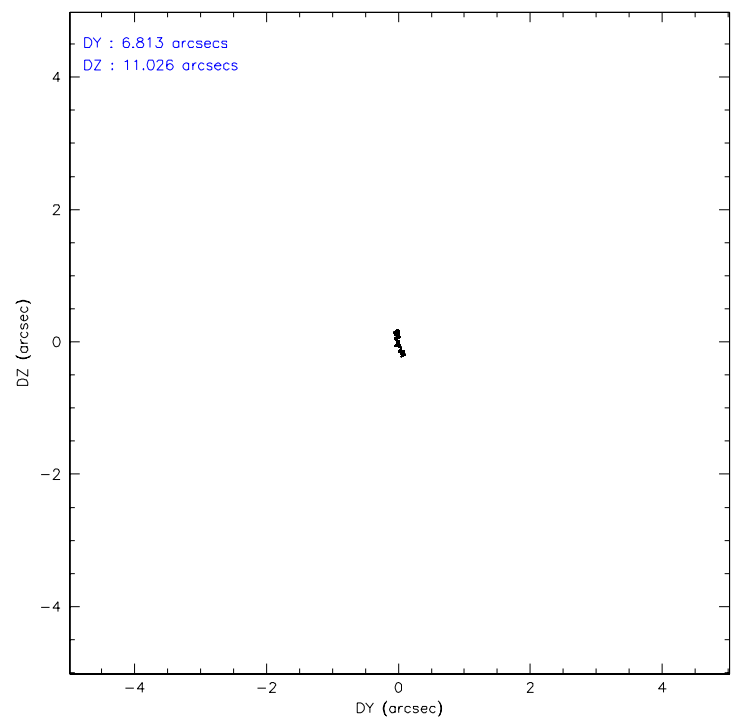
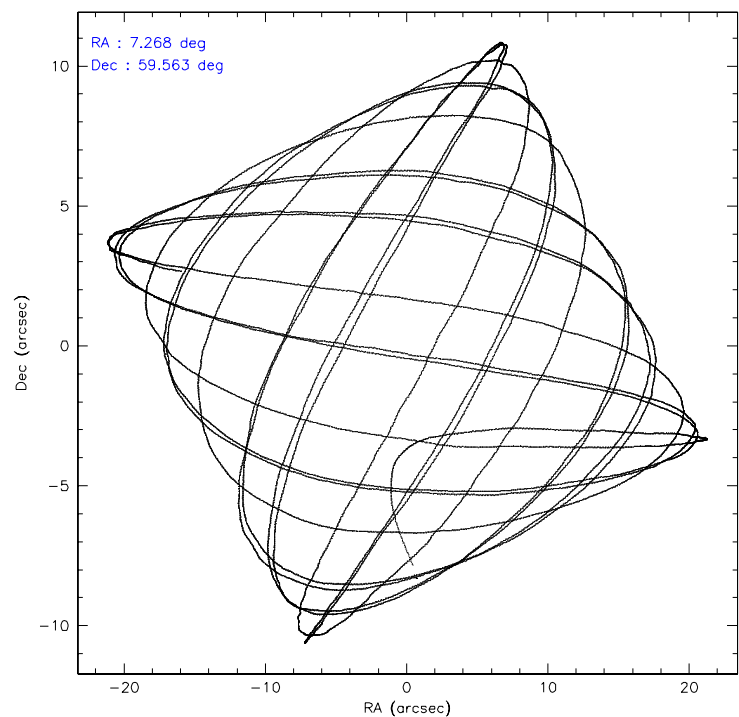
	<b>ccd 7</b>
level 1 events	15005
rejected events	9146
rejected %	60%

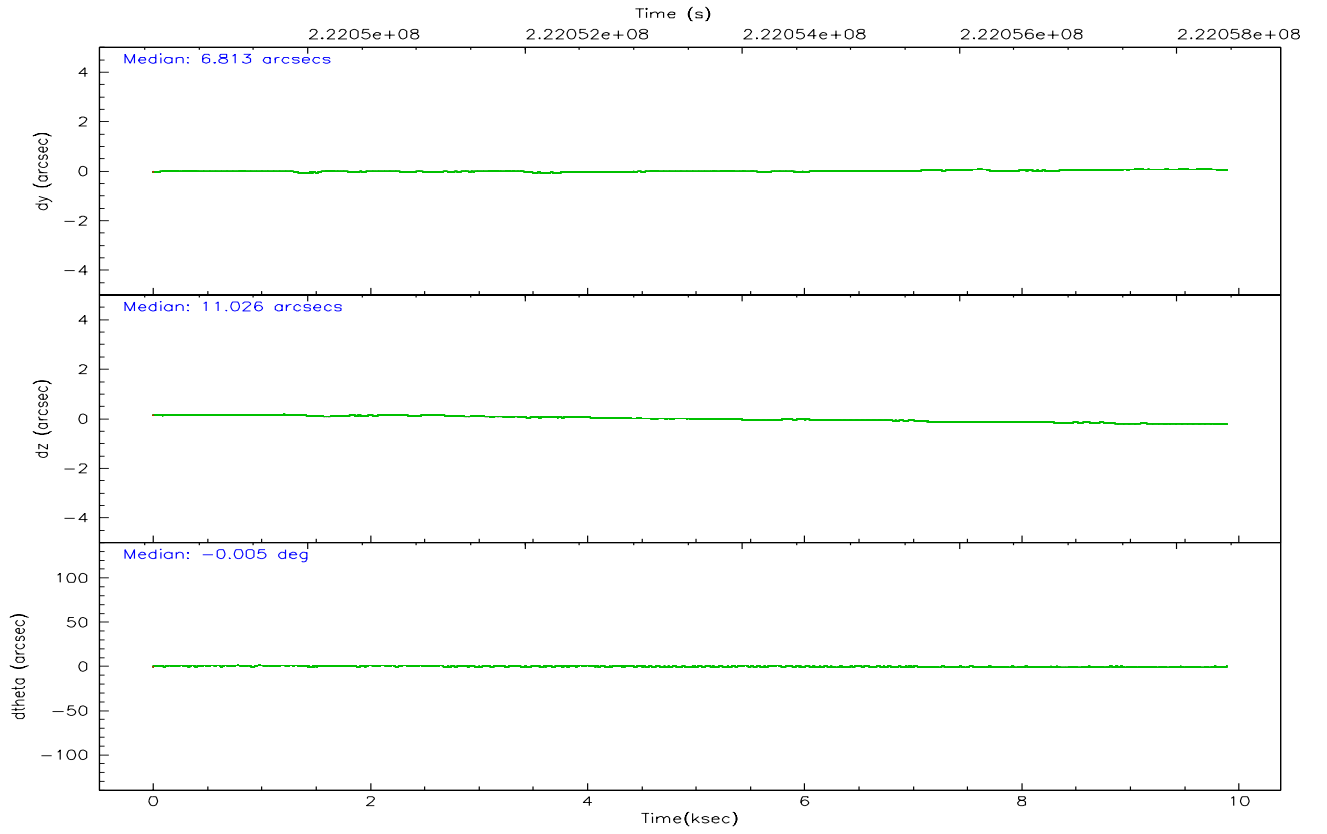
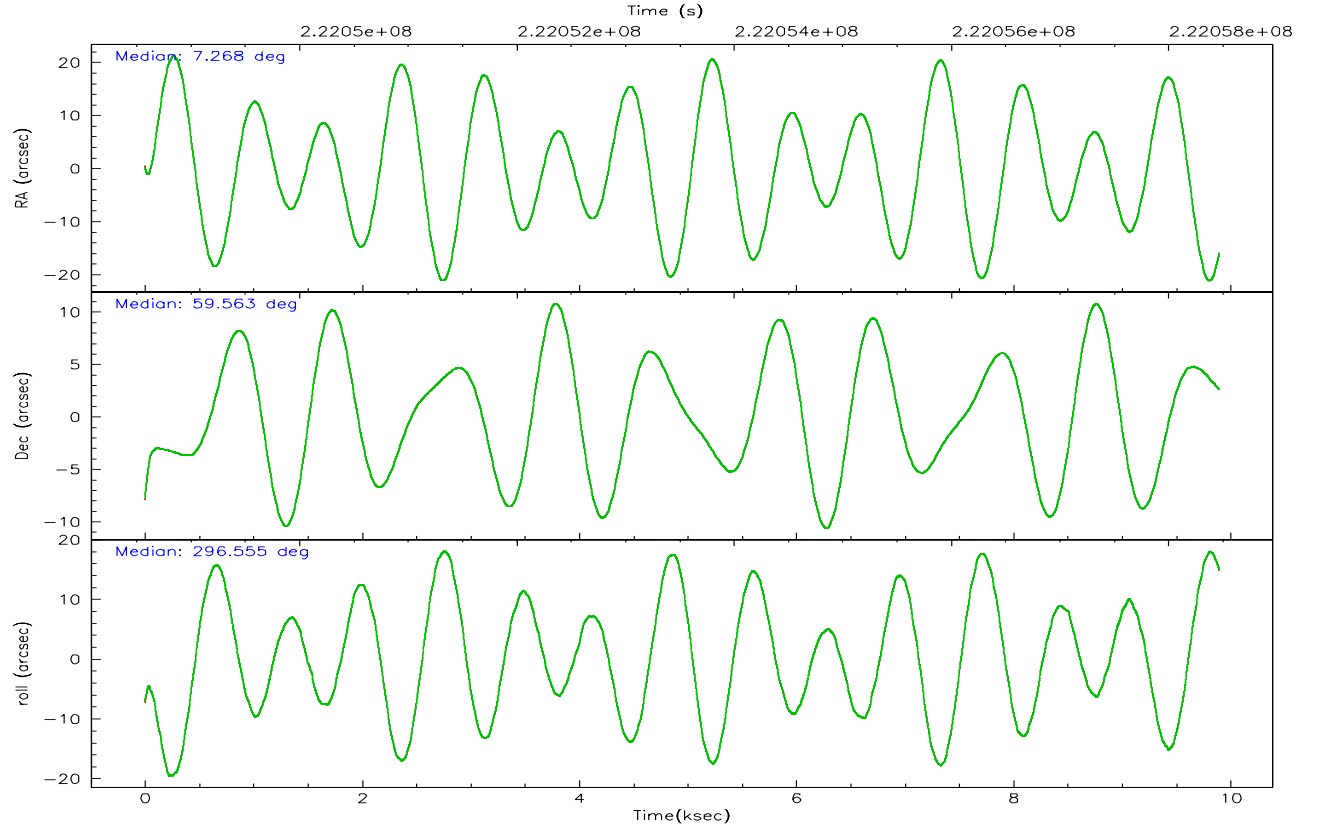
	<b>ccd 7</b>
grade 0 events	469
	3%
grade 1 events	10
	0%
grade 2 events	1473
	9%
grade 3 events	619
	4%
grade 4 events	625
	4%
grade 5 events	1062
	7%
grade 6 events	3275
	21%
grade 7 events	7472
	49%

## 2.2 Compared Parameters

Parameter	Planned	Actual	Parameter	Planned	Actual
Instrument	ACIS	ACIS	Obspar format version number	6	6
Detector	ACIS-7	ACIS-7	Obspar file type	PREDICTED	ACTUAL
Grating	NONE	NONE	Obspar update status	NONE	UPDATED
Data mode	FAINT	FAINT	On-chip summing requested	N	N
Observation mode	POINTING	POINTING	Subarray requested	1/8	1/8
Pointing RA	7.223068	7.26835399194402	Subarray start row	0	449
Pointing Dec	59.577349	59.56267601888501	Subarray row count	1024	128
Pointing Roll	296.441645	296.5592232876355	Alternating exposures requested	N	N
SIM focus pos (mm)	-0.684267	-0.6828225247311905	Primary exposure time	0.000000	0.4
SIM defocus (mm)	0	0.001444936568705701			
SIM translation stage pos (mm)	-190.132523	-190.1425803651734			
SIM translation stage offset (mm)	0	0.01005778216563158			
Observation start time	222048727.184000	222047581.05012			
Observation start date	2005-01-14T00:11:03	2005-01-13T23:53:01			
Observation end time	222058468.184000	222058696.15062			
Observation end date	2005-01-14T02:53:24	2005-01-14T02:58:16			
Read mode	TIMED	TIMED			

### 2.3 Aspect





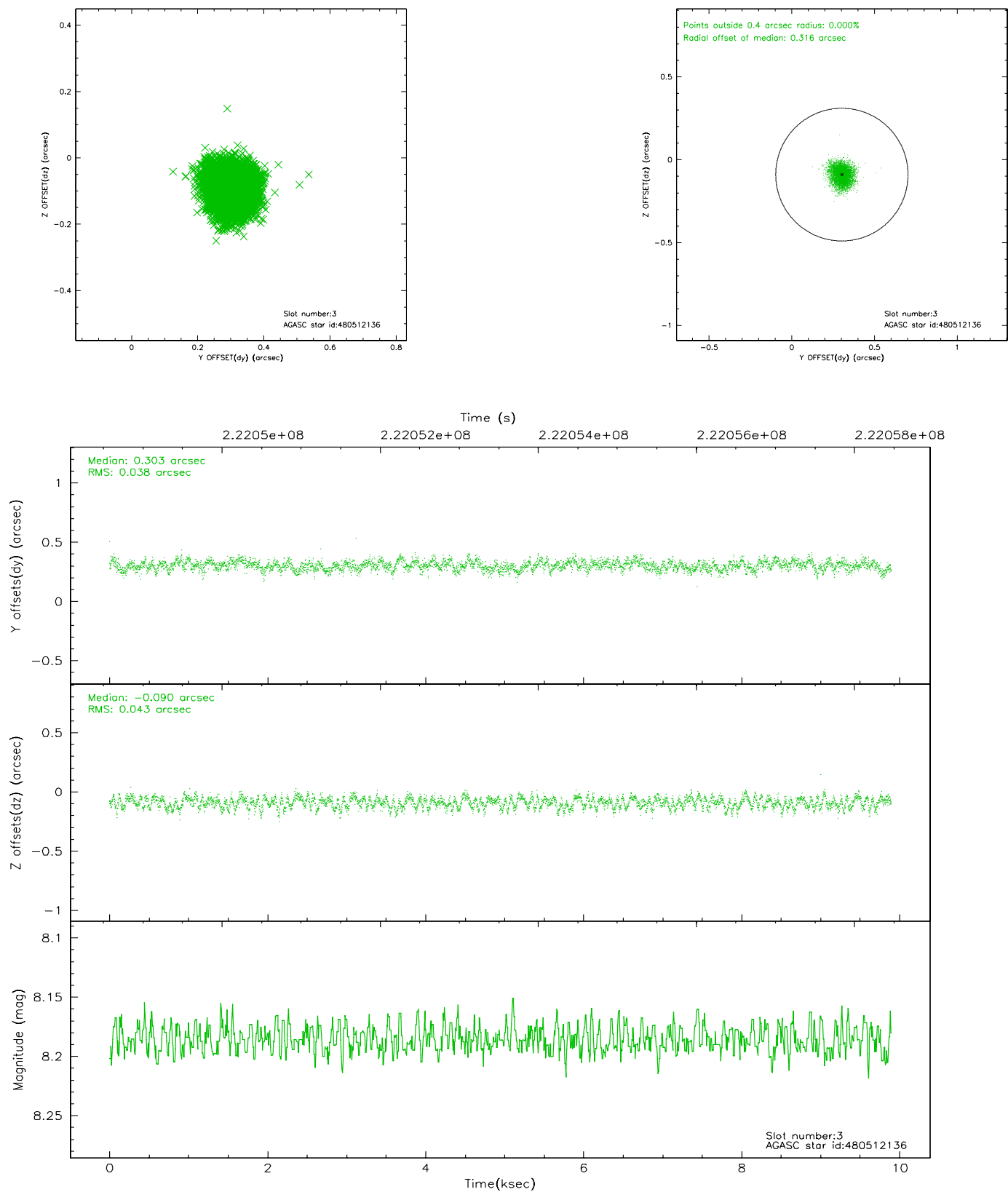
### Slot Statistics

slot	status	id	mag	n_pts	med_dy	med_dz	dr1	dr2	ra	dec	mean_y	mean_z
0	FID	ACIS-S-2	7.10	2414	-0.038	0.011	0.008	0.012	0.000000	0.000000	-759.57	-1732.25
1	FID	ACIS-S-4	7.20	2414	0.031	0.015	0.007	0.012	0.000000	0.000000	2153.50	175.73
2	FID	ACIS-S-5	7.23	2414	-0.024	-0.018	0.006	0.011	0.000000	0.000000	-1811.74	169.92
3	GUIDE	480512136	8.19	4828	0.303	-0.090	0.062	0.096	7.475231	59.254866	1245.97	-101.06
4	GUIDE	480513376	8.58	4828	0.193	0.034	0.056	0.092	7.508901	59.105688	1755.38	-282.40
5	GUIDE	480518848	8.91	4826	0.036	0.150	0.068	0.111	8.820863	59.312277	2130.56	2219.35
6	GUIDE	480379256	9.01	4827	-0.304	-0.151	0.104	0.167	5.631259	59.673209	-1627.69	-2421.29
7	GUIDE	526276608	8.59	4827	-0.228	0.052	0.069	0.111	7.524994	60.151139	-1610.14	1404.19

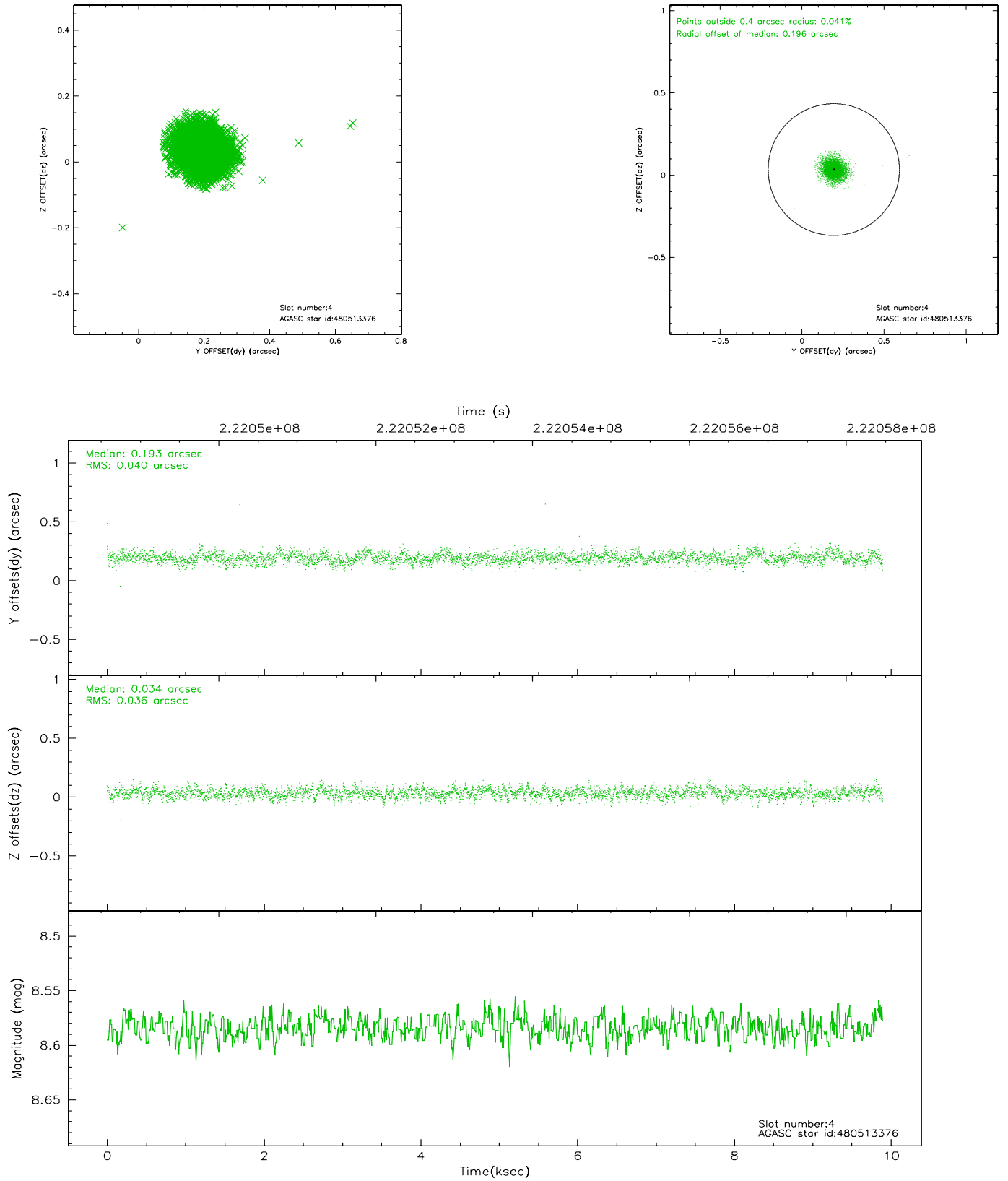


## 2.4 Star Slots

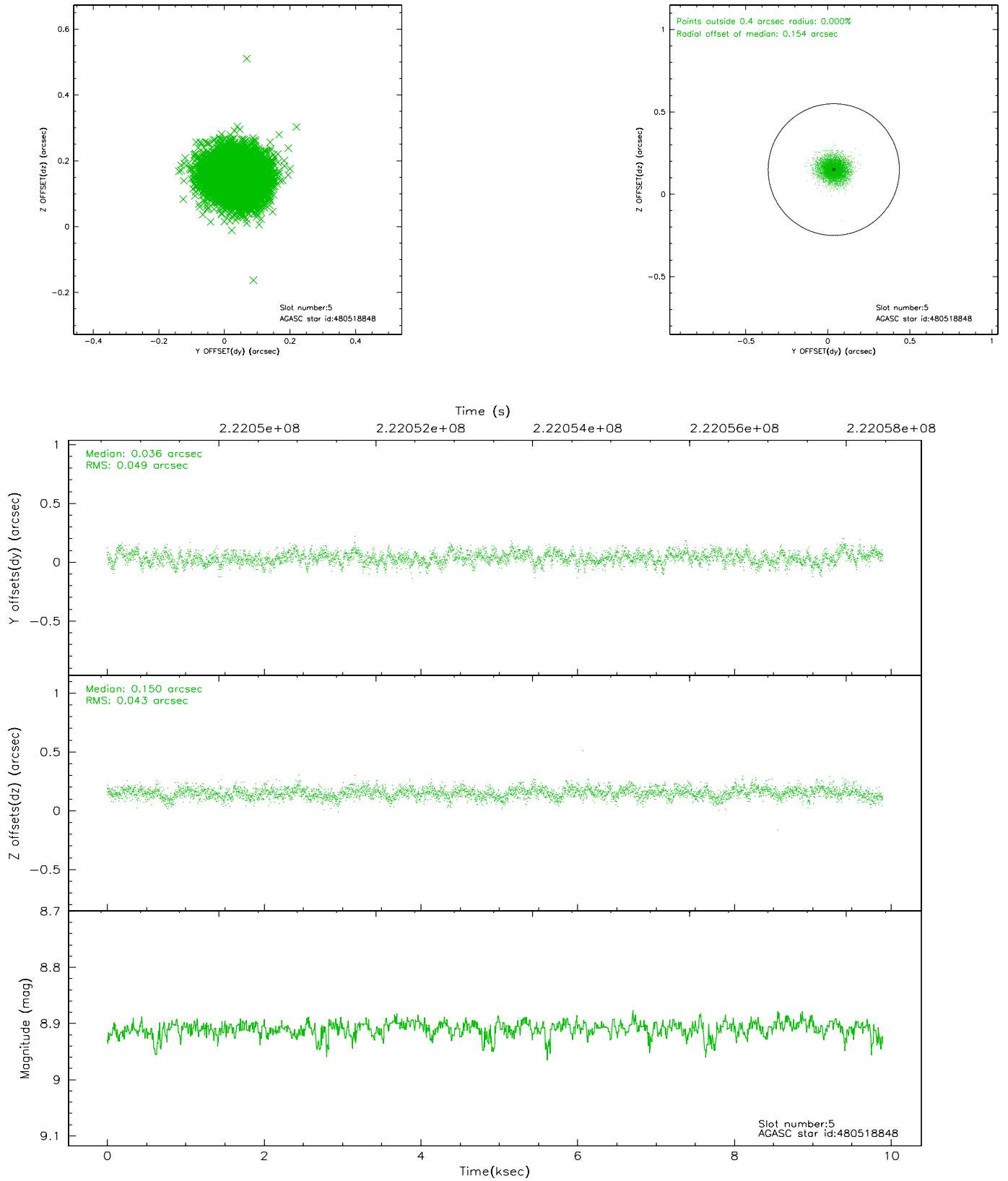
### 2.4.1 Slot 3



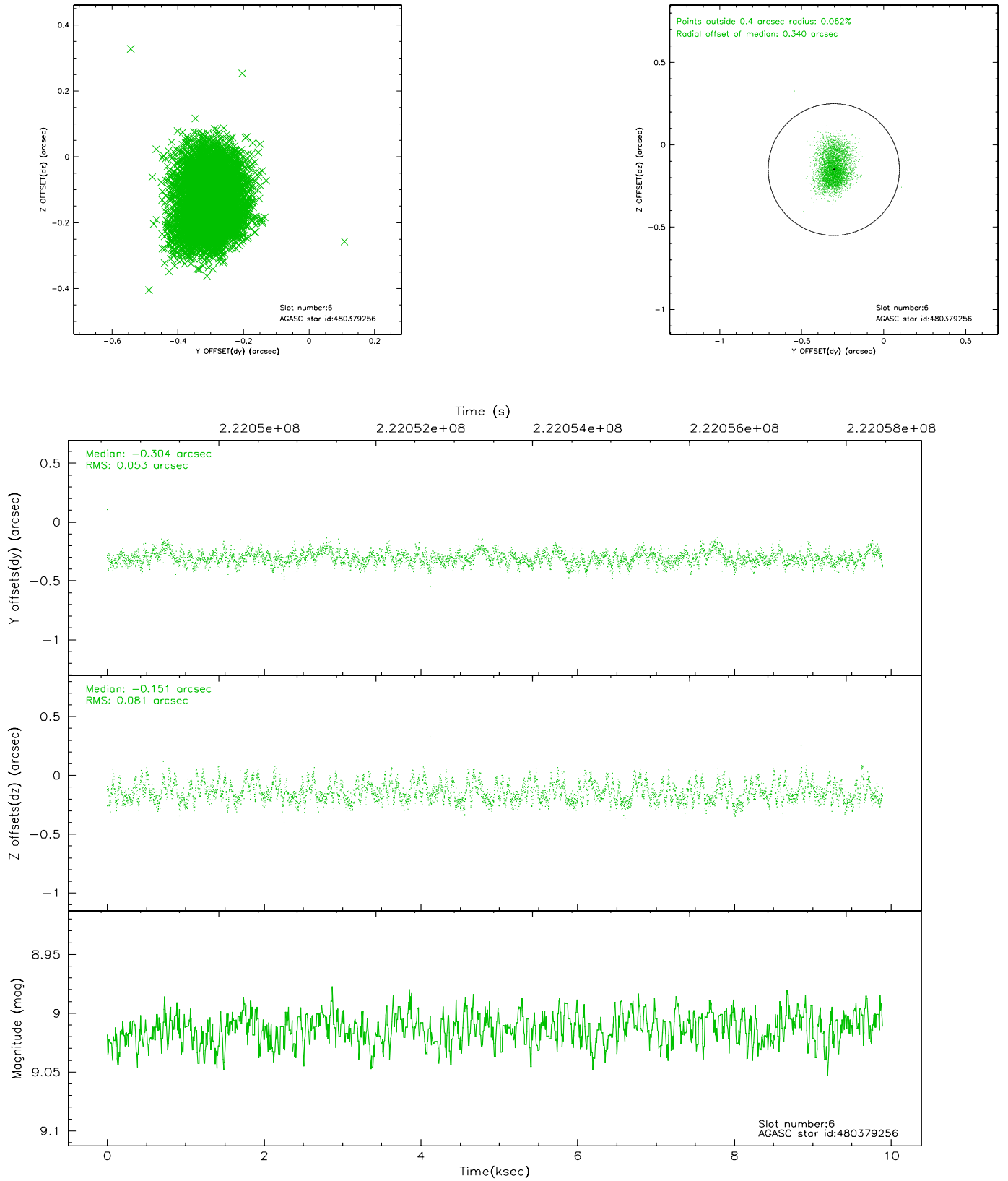
## 2.4.2 Slot 4



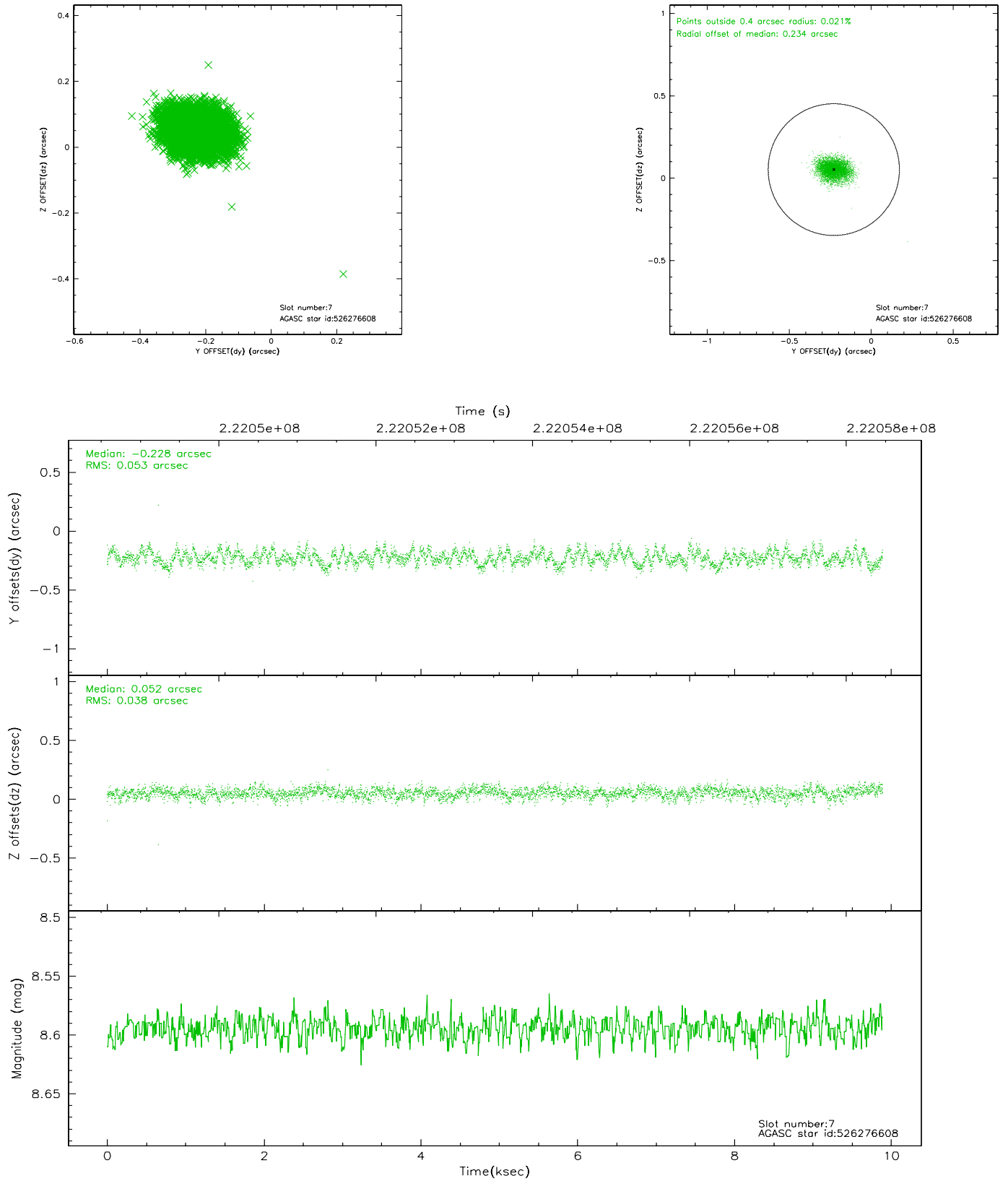
### 2.4.3 Slot 5



## 2.4.4 Slot 6

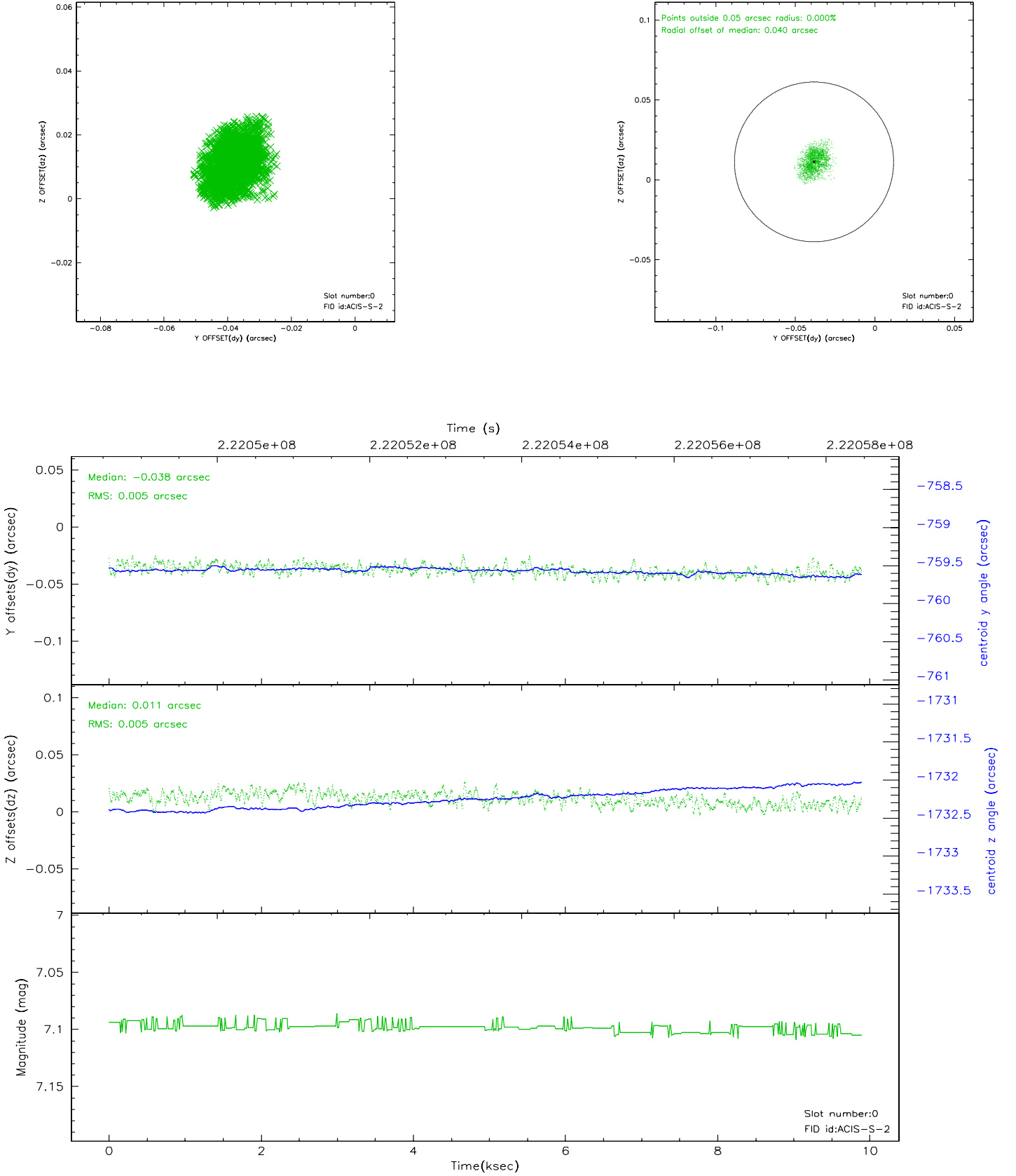


## 2.4.5 Slot 7

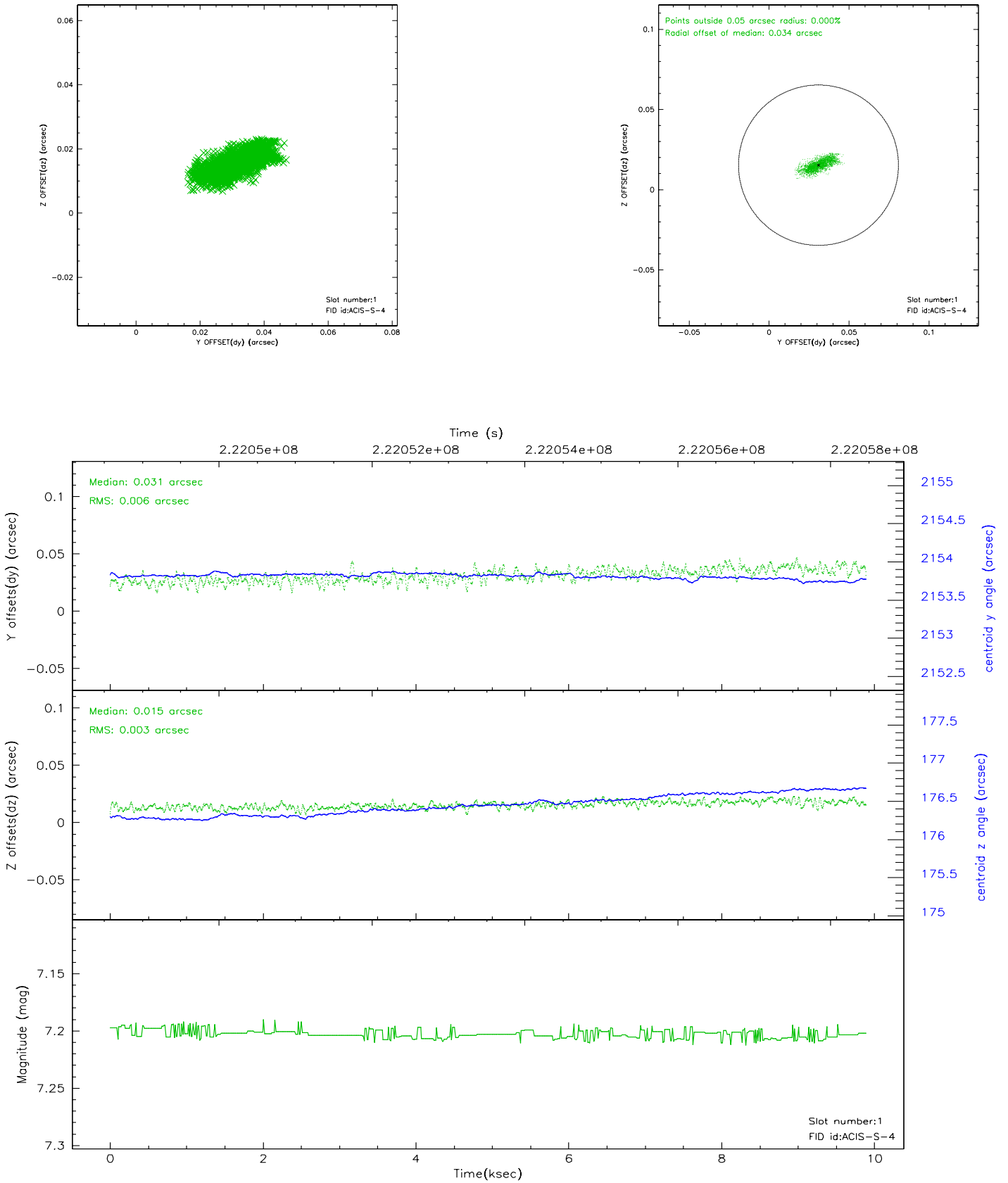


## 2.5 FID Slots

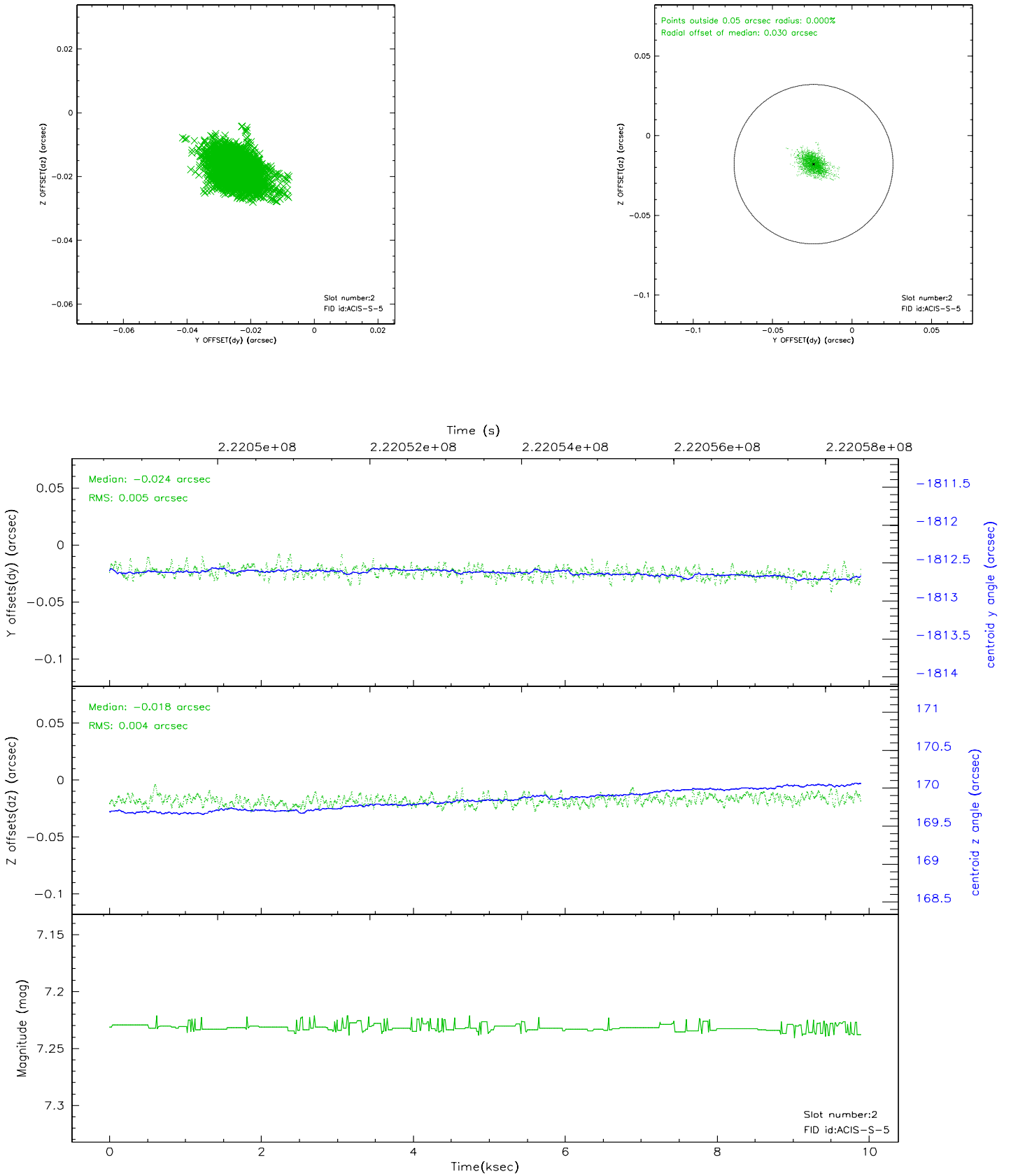
### 2.5.1 Slot 0



## 2.5.2 Slot 1



### 2.5.3 Slot 2





### 3 Point Sources

## A Summary

### A.1 Status

V&V Scientist	Beth Sundheim
V&V Date (YYYY-MM-DD)	2006.02.17
V&V Edition	1
V&V Disposition and Status	OK
V&V Charge Time	9.894359

### A.2 Comments

Charge time:

Using existing charge time of 9.894359.