

V&V Reference Report

L2 ASCDS Version : 8.4.3

Observation 5506 - L2 Version 4
Chandra X-Ray Center

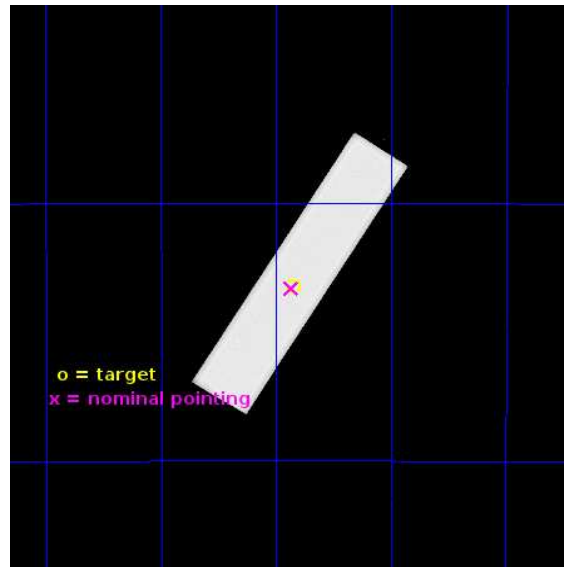
L2 Processing Date : Jun 29 2013

Contents

1	Front	2
2	OBI	3
2.1	OBI	3
2.1.1	Images	3
2.1.2	Parameters	4
2.1.3	Events	4
2.2	Compared Parameters	5
2.3	Aspect	6
2.4	Star Slots	9
2.4.1	Slot 3	9
2.4.2	Slot 4	10
2.4.3	Slot 5	11
2.4.4	Slot 6	12
2.4.5	Slot 7	13
2.5	FID Slots	14
2.5.1	Slot 0	14
2.5.2	Slot 1	15
2.5.3	Slot 2	16
A	Summary	17
A.1	Status	17
A.2	Comments	17

1 Front

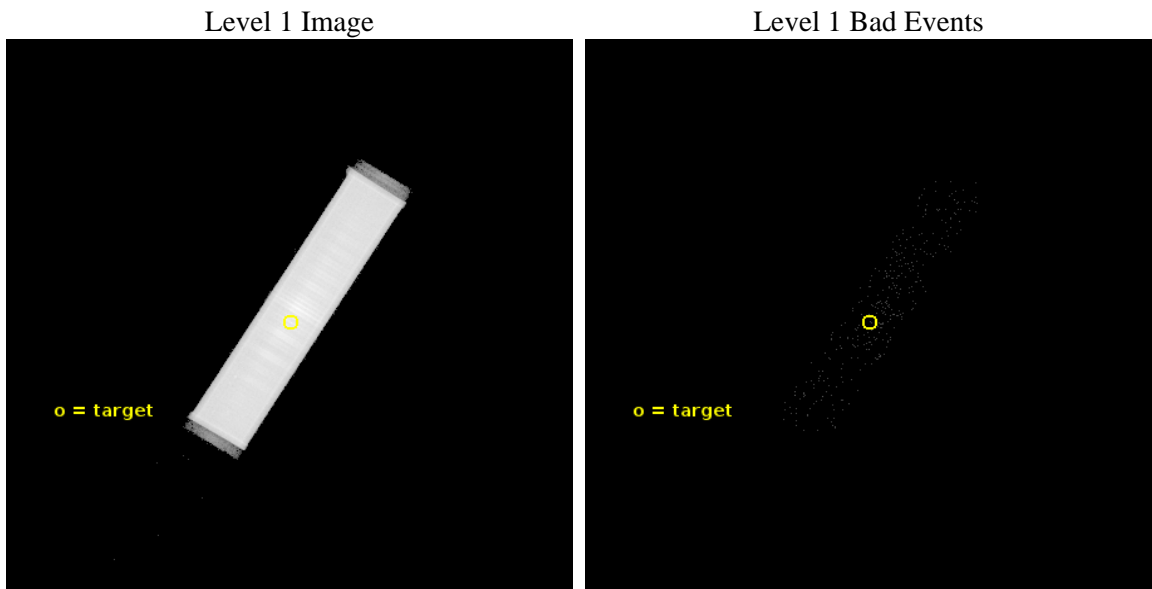
seq_num	400436	Sequence number
obs_id	5506	Observation id
title	Probing the X-ray Emission from Dueling Magnetospheres	Proposal ti
observer	Dr. Shami Chatterjee	Principal investigator
object	PSR J0737-3039	Source name
ra_targ	114.46375	Observer's specified target RA [deg]
dec_targ	-30.661306	Observer's specified target Dec [deg]
ra_nom	114.46653108083	Nominal RA [deg]
dec_nom	-30.665312333841	Nominal Dec [deg]
roll_nom	302.06876024785	Nominal Roll [deg]
revision	4	Processing version of data
ontime	53588.283741415	[s]
livetime	53361.655867201	Ontime multiplied by DTCOR
l2events	2287465	Number of level 2 events



2 OBI

2.1 OBI

2.1.1 Images



2.1.2 Parameters

obi_num	0	Obi number	sched_exp_time	53400.000000	[s] Scheduled observation exposure time
ascdsver	10	Processing system revision	ontime	53588.283741415	[s]
caldsver	4.5.7	 	l1events	3348179	Number of level 1 events
date	2013-06-29T03:28:51	Date and time of file creation			
revision	4	Processing version of data			

2.1.3 Events

Level 1 Events

	segment 1	segment 2	segment 3
level 1 events	4191	3343972	16
rejected events	60	39820	7
rejected %	1%	1%	43%

2.2 Compared Parameters

Parameter	Planned	Actual
Instrument	HRC	HRC
Detector	HRC-S	HRC-S
Grating	NONE	NONE
Data mode	OBSERVING	OBSERVING
Observation mode	POINTING	POINTING
[deg] Pointing RA	114.436400	114.466531080829
[deg] Pointing Dec	-30.653207	-30.66531233384109
[deg] Pointing Roll	301.986058	302.0687602478457
[mm] SIM focus pos	-1.529586	-1.523540733526241
[mm] SIM defocus	0.003750771043328743	0.009795905878055677
[mm] SIM translation stage pos	250.455976	250.466033080201
[mm] SIM translation stage offset	0	-0.01005468664627074
[s] Observation start time (MET)	257537159.184000	257536374.97644
Observation start date	2006-02-28T18:04:54	2006-02-28T17:52:54
[s] Observation end time (MET)	257590559.184000	257591318.05399
Observation end date	2006-03-01T08:54:54	2006-03-01T09:08:38

Parameter	Planned	Actual
Obspar format version number	7	7
Obspar file type	PREDICTED	ACTUAL
Obspar update status	NONE	UPDATED

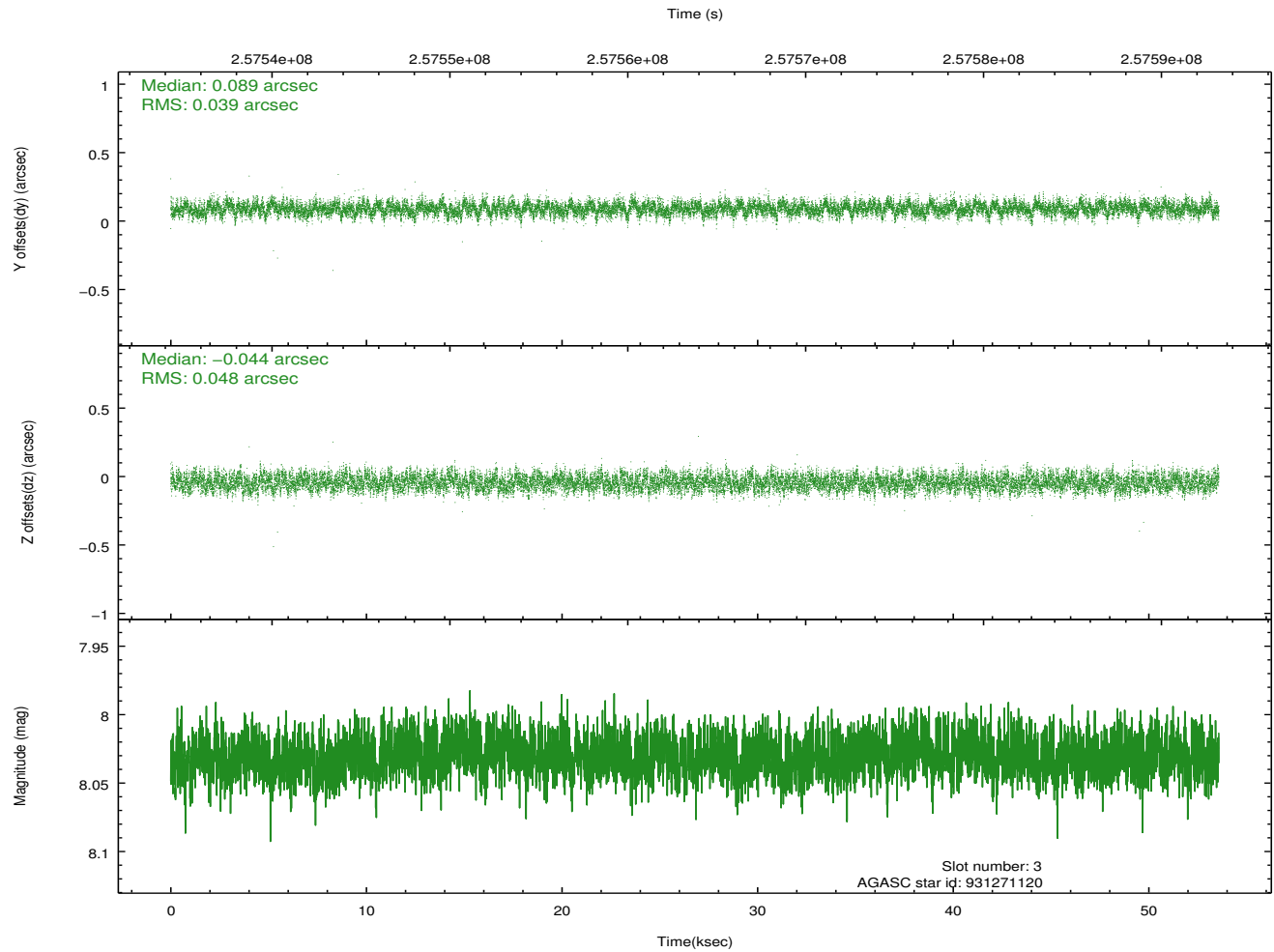
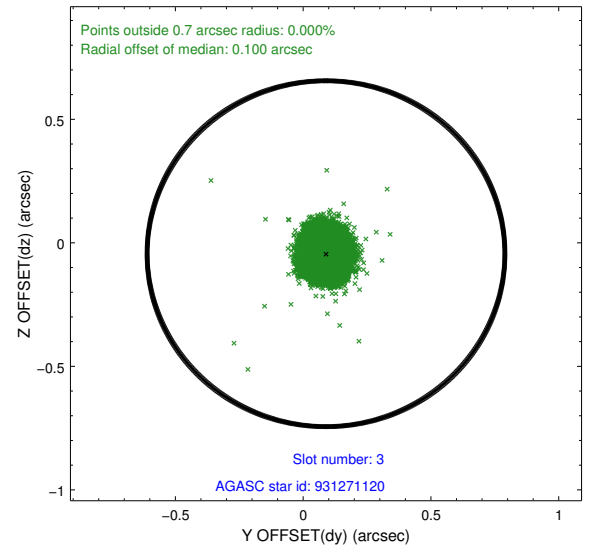
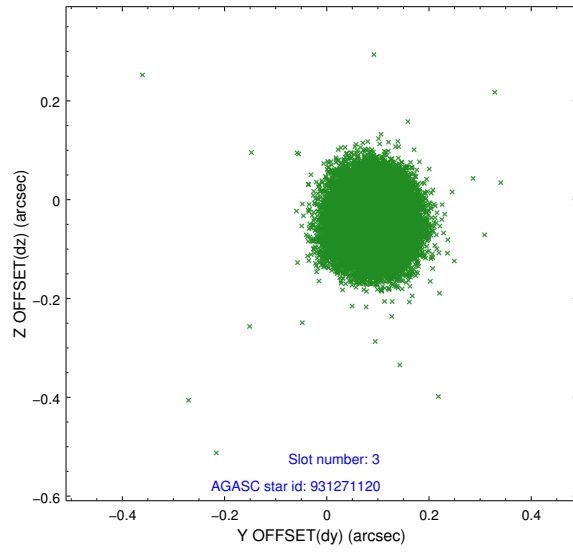
2.3 Aspect

Slot Statistics

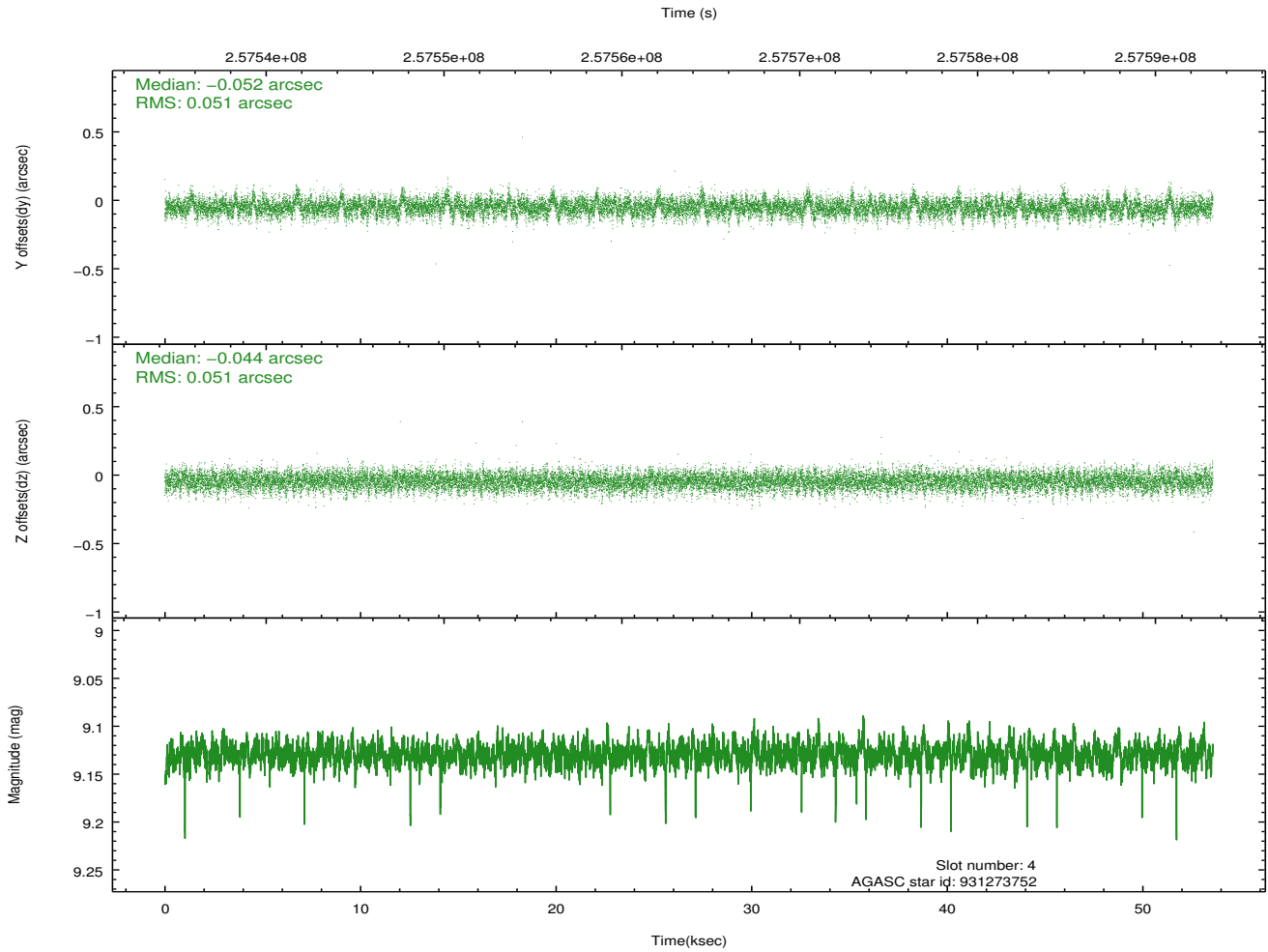
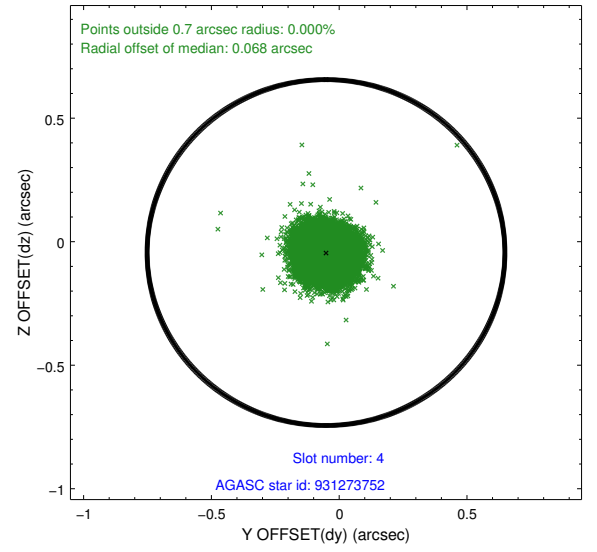
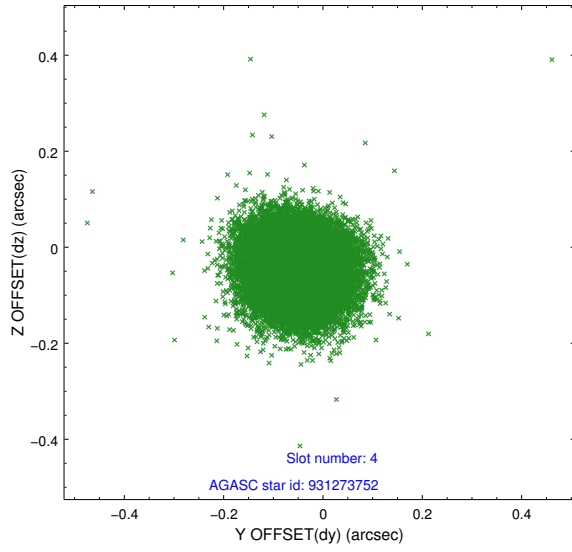
slot	status	id	mag	n_pts	med_dy	med_dz	dr1	dr2	ra	dec	mean_y	mean_z
0	FID	HRC-S-1	7.04	13070	0.139	-0.205	0.016	0.034	0.000000	0.000000	-1163.91	-458.98
1	FID	HRC-S-2	7.03	13070	0.143	-0.111	0.014	0.032	0.000000	0.000000	1235.67	-451.60
2	FID	HRC-S-3	7.05	13071	0.106	0.013	0.010	0.021	0.000000	0.000000	-1166.55	570.72
3	GUIDE	931271120	8.03	26128	0.089	-0.044	0.067	0.104	114.333464	-30.792205	256.52	-534.93
4	GUIDE	931273752	9.13	26118	-0.052	-0.044	0.076	0.123	114.272866	-30.278196	-1413.67	283.77
5	GUIDE	931276288	9.27	26104	0.038	0.004	0.098	0.161	114.013223	-30.688150	-584.64	-1178.94
6	GUIDE	931278264	9.62	26119	-0.071	0.038	0.109	0.180	113.626469	-30.363819	-2208.08	-1586.78
7	GUIDE	931425192	9.59	26122	-0.006	0.050	0.119	0.192	115.048537	-30.522181	610.62	1857.68

2.4 Star Slots

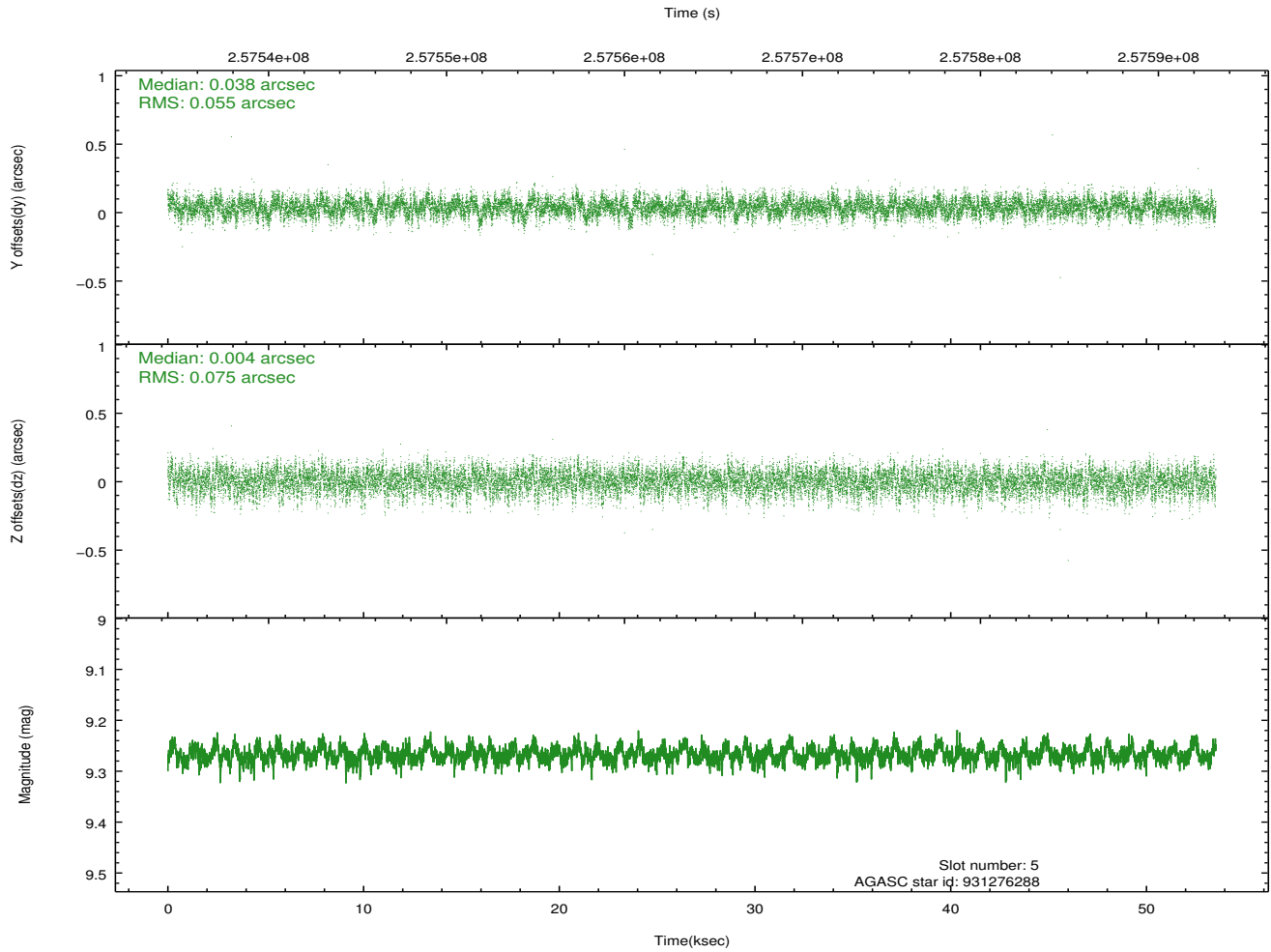
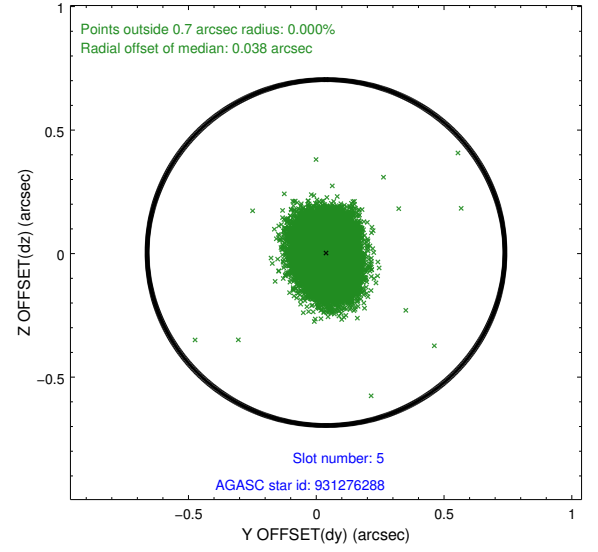
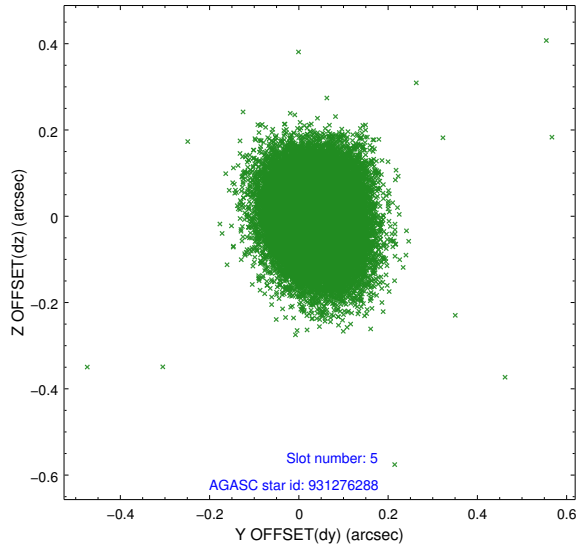
2.4.1 Slot 3



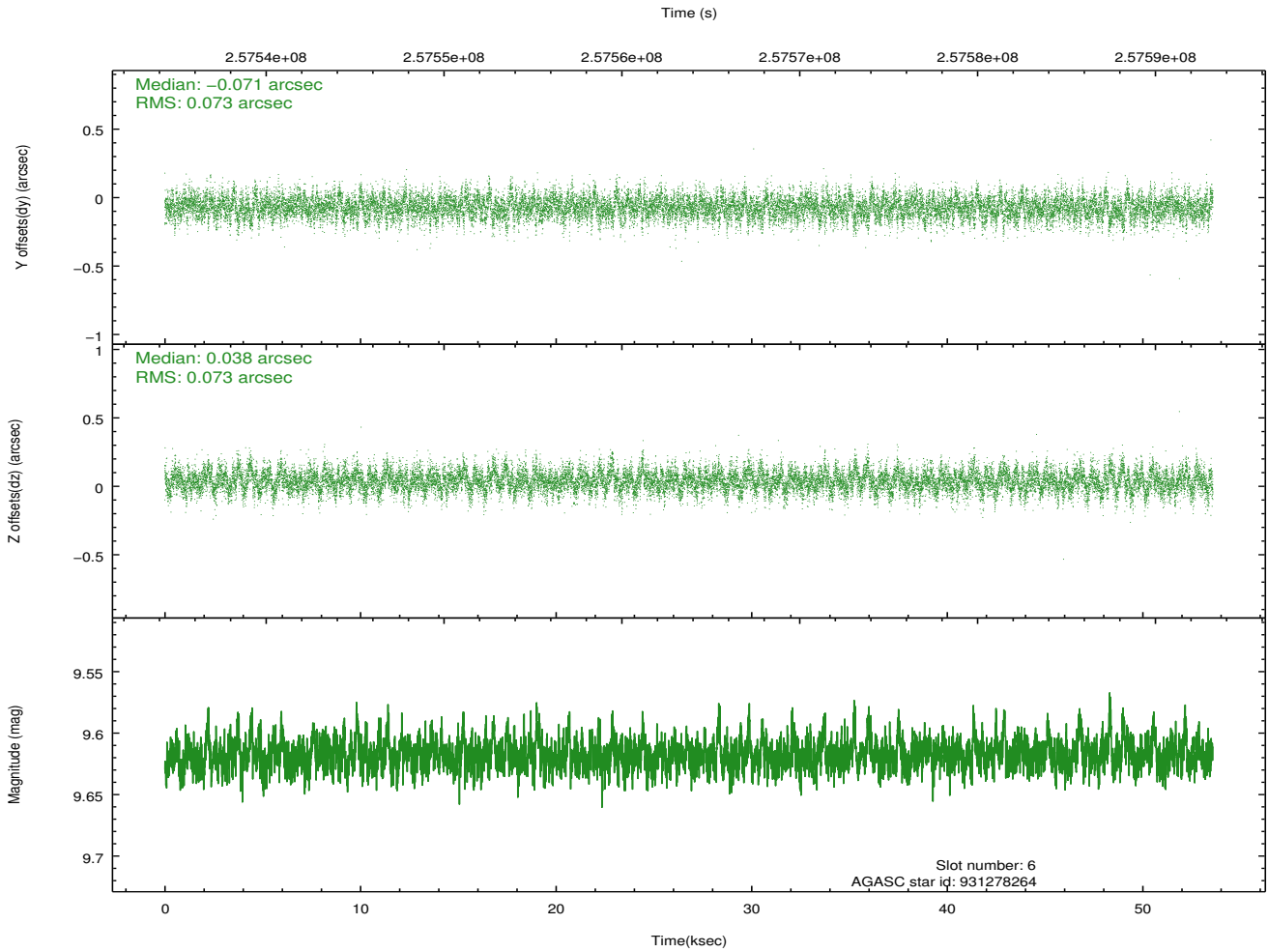
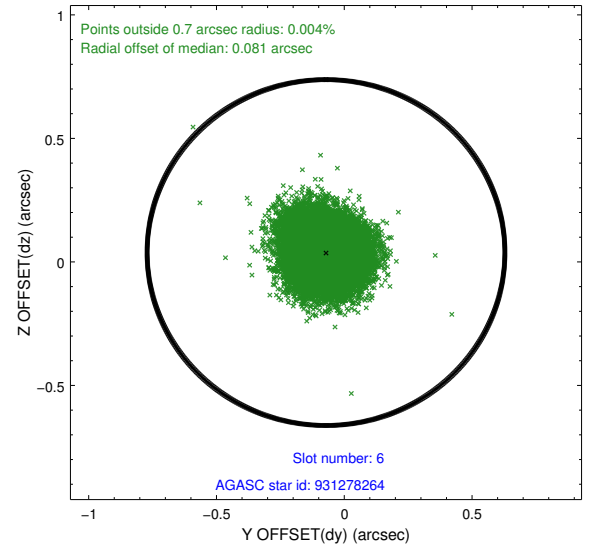
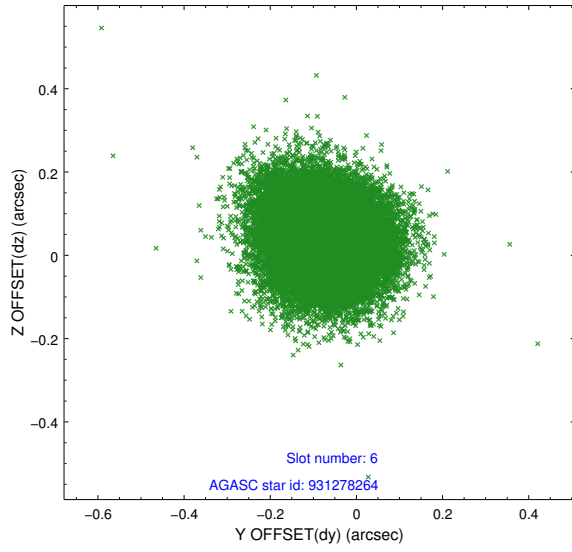
2.4.2 Slot 4



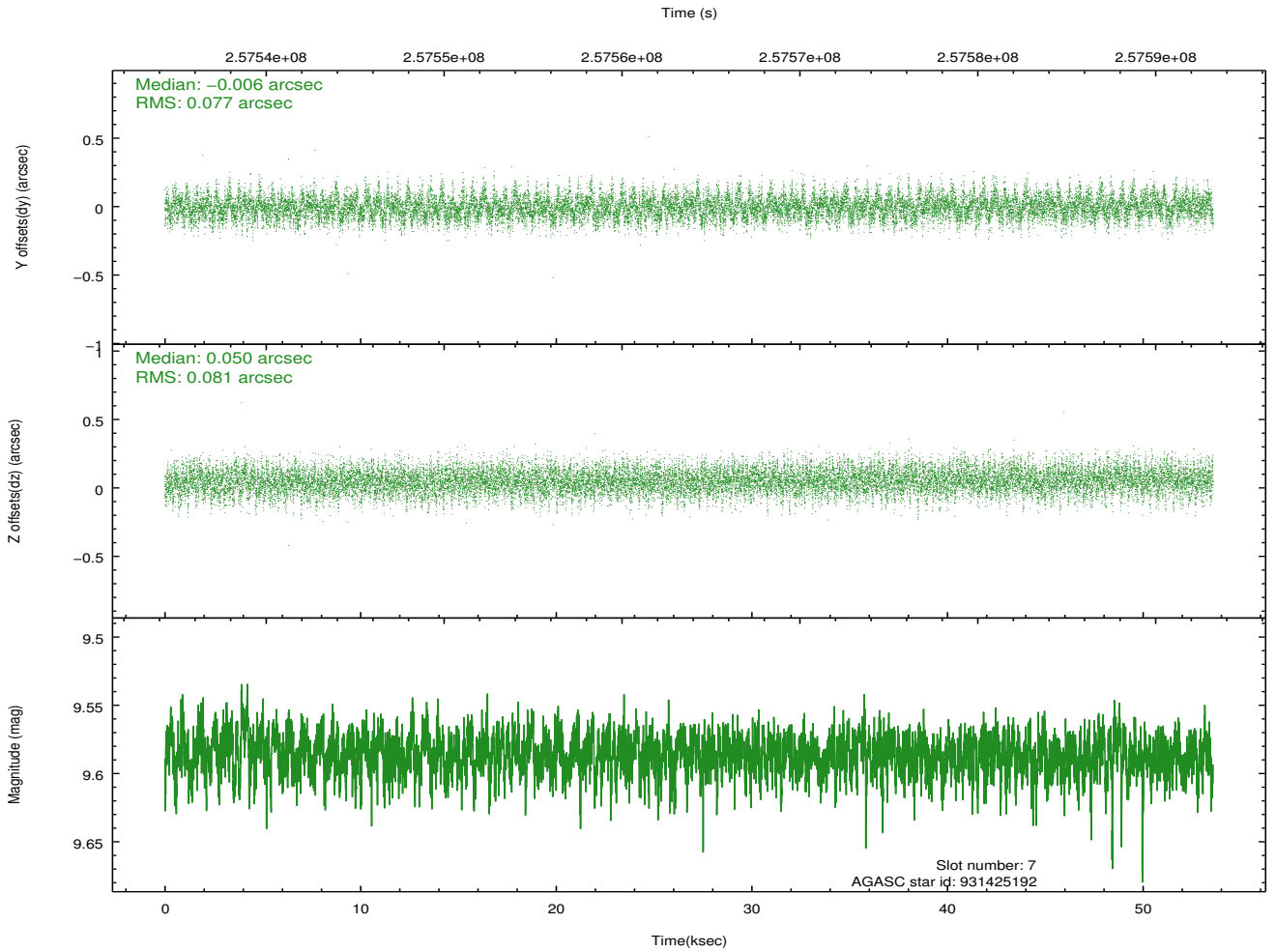
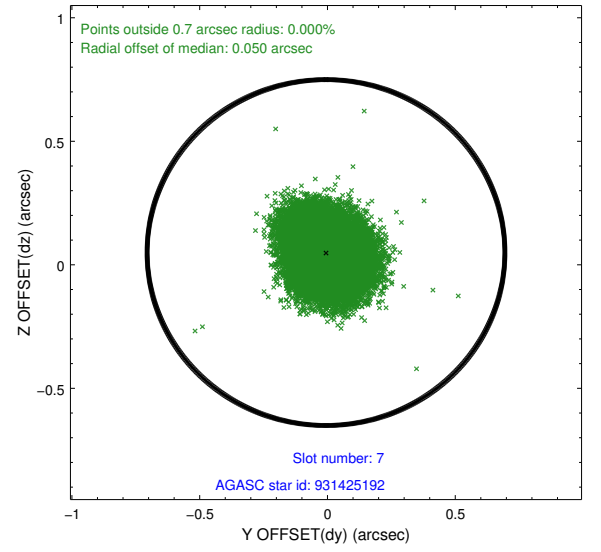
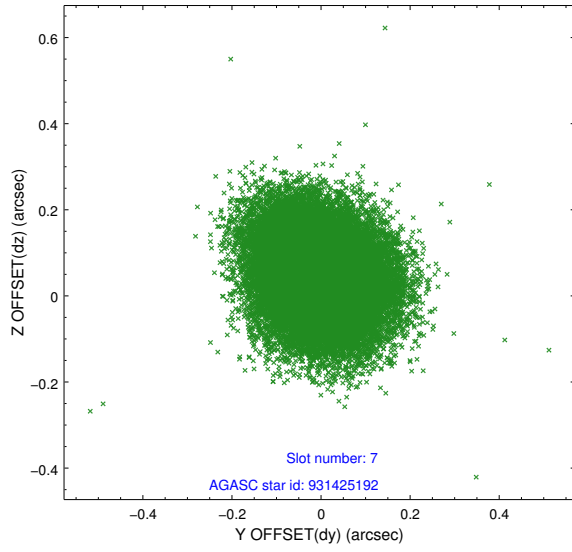
2.4.3 Slot 5



2.4.4 Slot 6

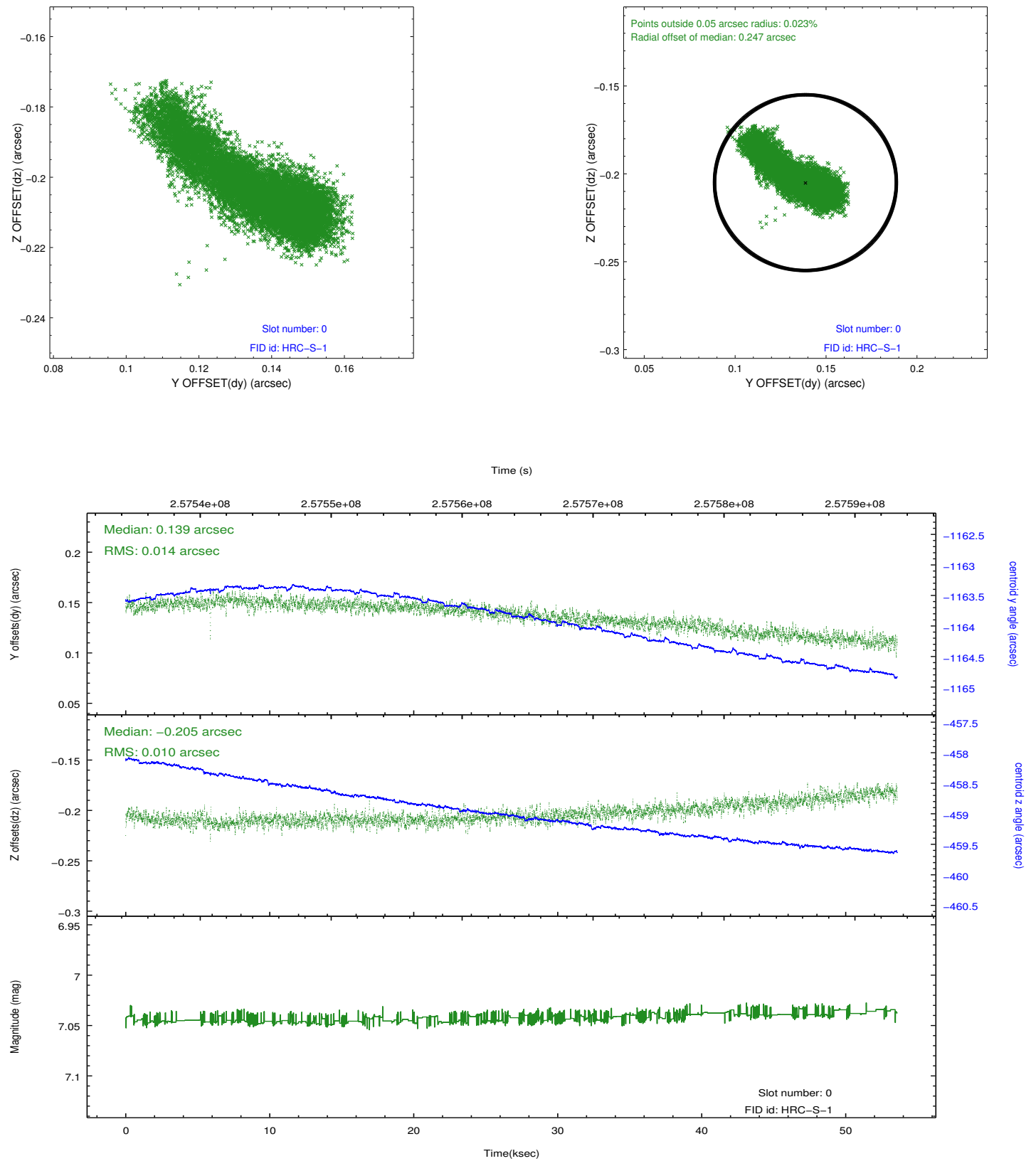


2.4.5 Slot 7

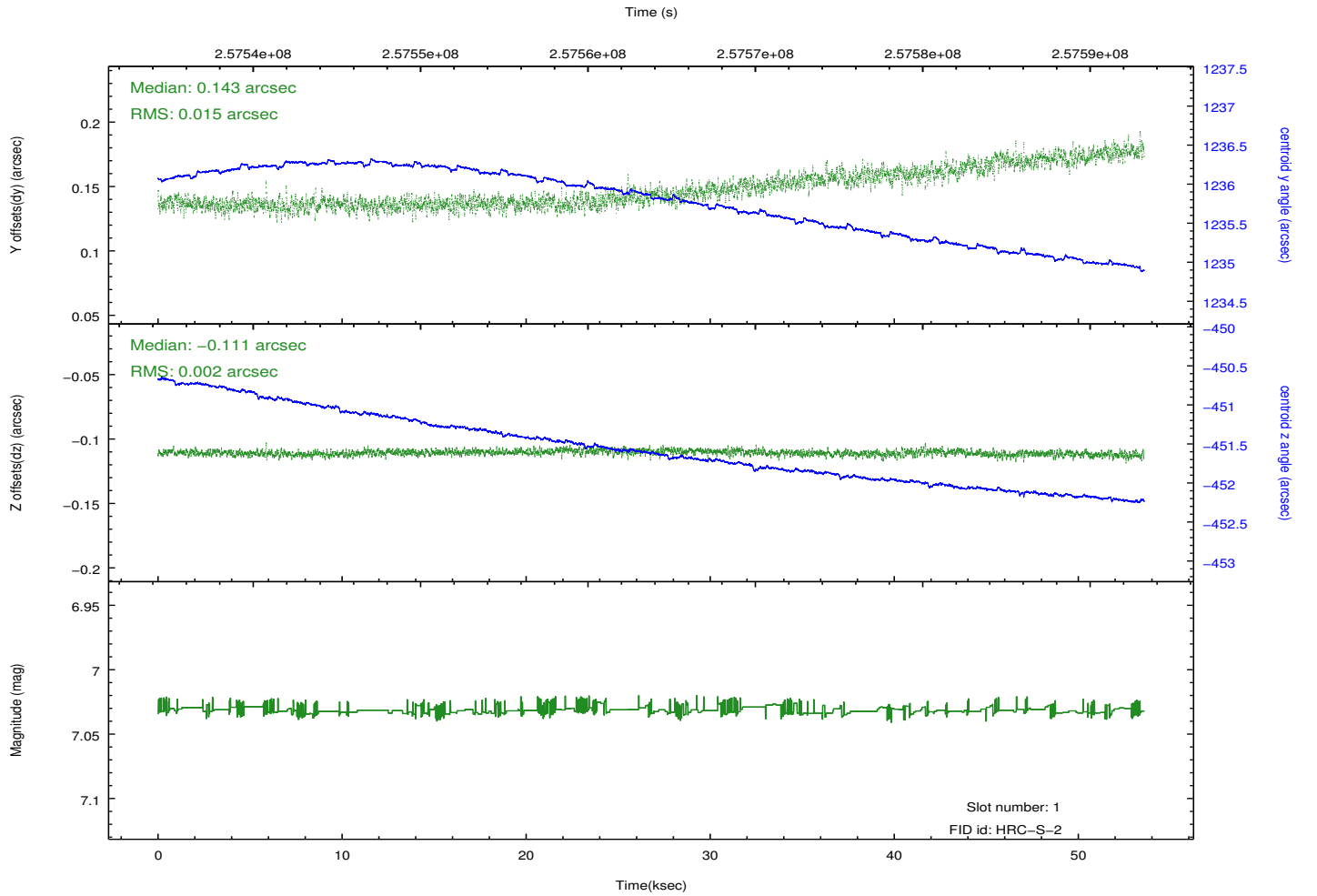
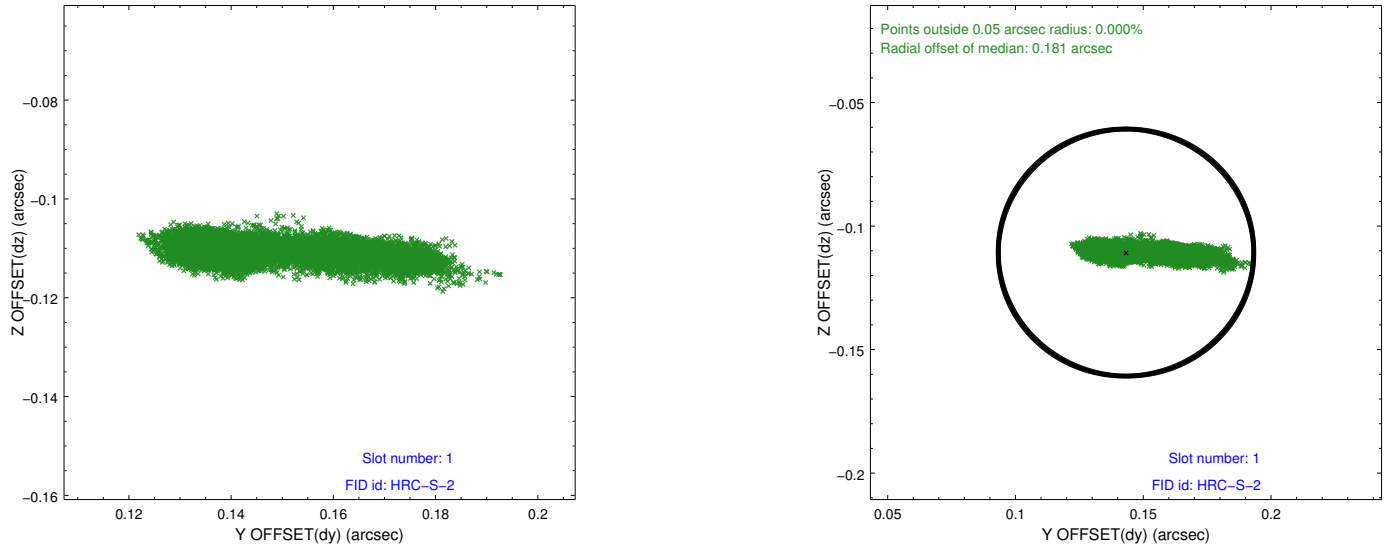


2.5 FID Slots

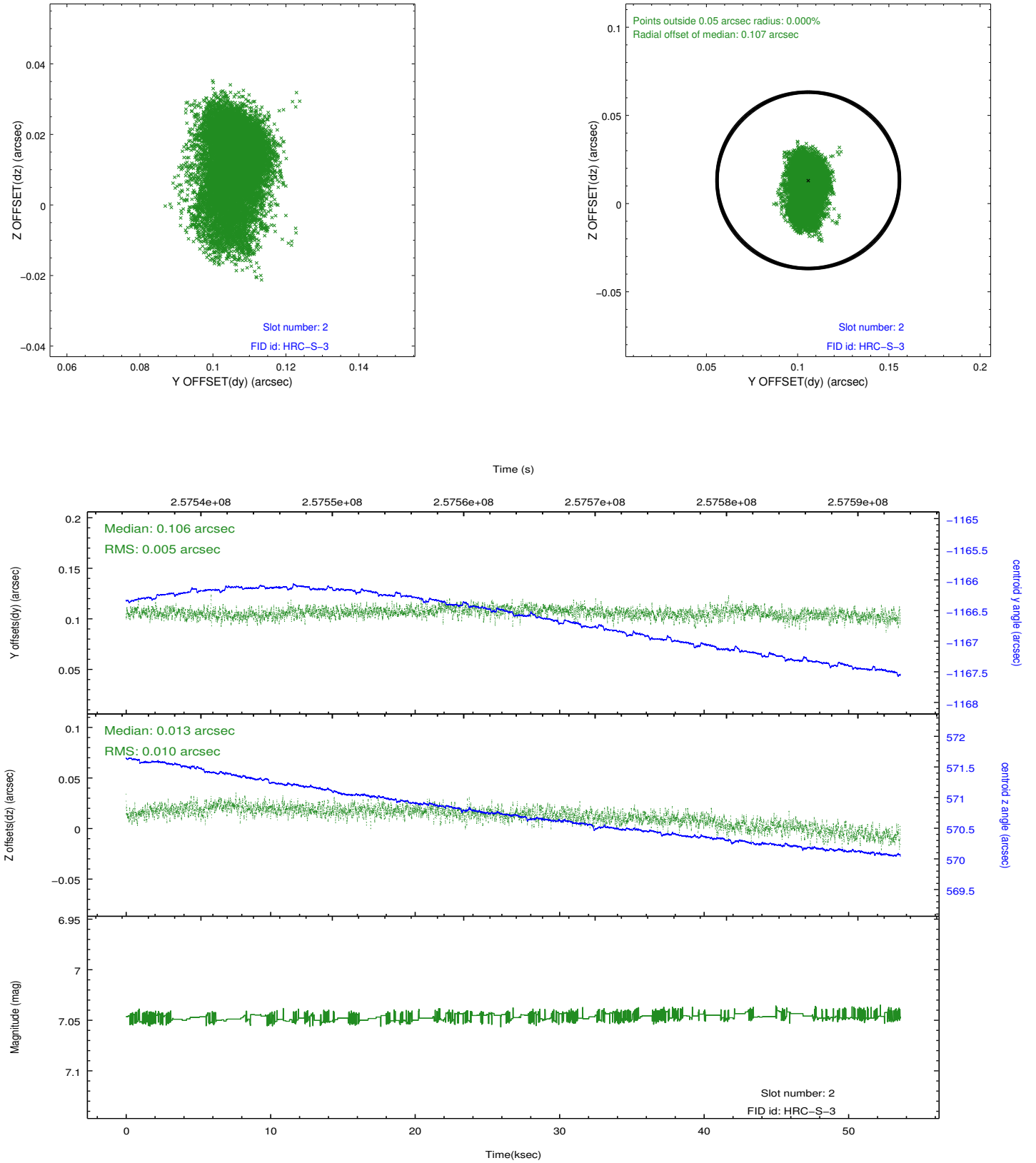
2.5.1 Slot 0



2.5.2 Slot 1



2.5.3 Slot 2



A Summary

A.1 Status

V&V Scientist	Beth Sundheim
V&V Date (YYYY-MM-DD)	2013.07.01
V&V Edition	1
V&V Disposition and Status	OK
V&V Charge Time	53.5882837

A.2 Comments