

V&V Reference Report

L2 ASCDS Version : 8.5.1.1

Observation 5468 - L2 Version 4
Chandra X-Ray Center

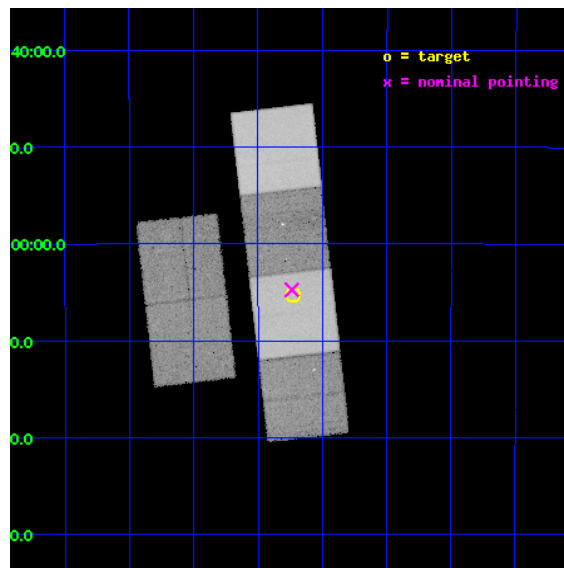
L2 Processing Date : Dec 24 2012

Contents

1	Front	2
2	OBI	3
2.1	OBI	3
2.1.1	Images	3
2.1.2	Bias	3
2.1.3	Parameters	4
2.1.4	Events	4
2.2	Compared Parameters	5
2.3	Aspect	6
2.4	Star Slots	9
2.4.1	Slot 3	9
2.4.2	Slot 4	10
2.4.3	Slot 5	11
2.4.4	Slot 6	12
2.4.5	Slot 7	13
2.5	FID Slots	14
2.5.1	Slot 0	14
2.5.2	Slot 1	15
2.5.3	Slot 2	16
A	Summary	17
A.1	Status	17
A.2	Comments	17

1 Front

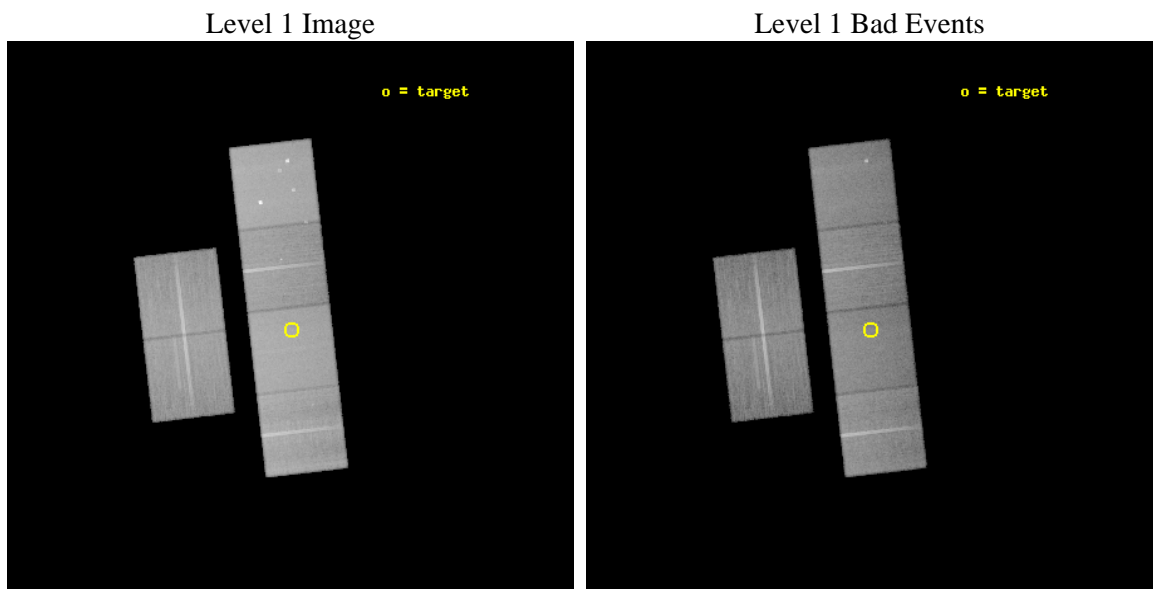
seq_num	400398	Sequence number
obs_id	5468	Observation id
title	Cooling curves of accretion-heated neutron stars	Proposal title
observer	Dr. Rudy Wijnands	Principal investigator
object	KS 1731-260	Source name
dtcycle	0	
cycle	P	events from which exps? Prim/Second/Both
ra_targ	263.55625	Observer's specified target RA [deg]
dec_targ	-26.088556	Observer's specified target Dec [deg]
ra_nom	263.55931844333	Nominal RA [deg]
dec_nom	-26.079263831002	Nominal Dec [deg]
roll_nom	83.467979221169	Nominal Roll [deg]
revision	4	Processing version of data
ontime	38953.599854887	Sum of GTIs [s]
livetime	38460.345918482	Livetime [s]
ontime2	38953.599854887	Sum of GTIs [s]
ontime3	38953.599854887	Sum of GTIs [s]
ontime5	38953.599854887	Sum of GTIs [s]
ontime6	38953.599854887	Sum of GTIs [s]
ontime7	38953.599854887	Sum of GTIs [s]
ontime8	38950.358884603	Sum of GTIs [s]
l2events	483011	Number of level 2 events



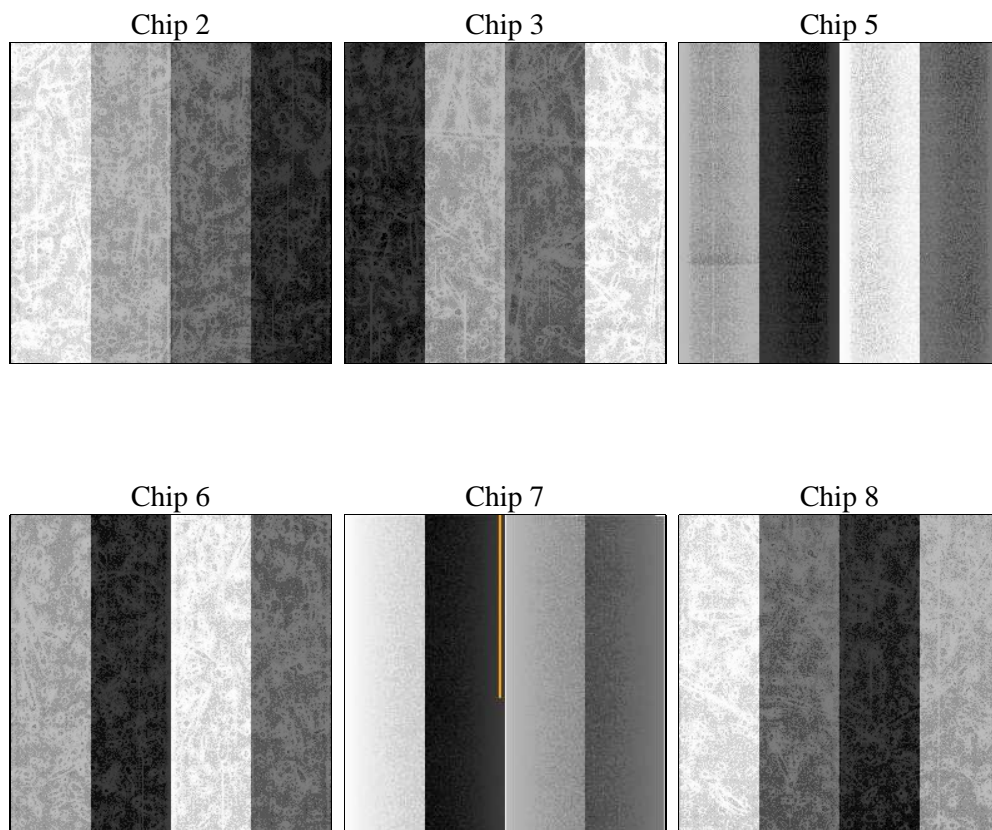
2 OBI

2.1 OBI

2.1.1 Images



2.1.2 Bias



2.1.3 Parameters

obi_num	0	Obi number	sched_exp_time	39200.000000	[s] Scheduled observation exposure time
ascdsver	8.5.1.1	Processing system revision	ontime	38953.599854887	Sum of GTIs [s]
caldsver	4.5.5	 	ontime2	38953.599854887	Sum of GTIs [s]
date	2012-12-24T12:52:10	Date and time of file creation	ontime3	38953.599854887	Sum of GTIs [s]
revision	4	Processing version of data	ontime5	38953.599854887	Sum of GTIs [s]
			ontime6	38953.599854887	Sum of GTIs [s]
			ontime7	38953.599854887	Sum of GTIs [s]
			ontime8	38950.358884603	Sum of GTIs [s]
			l1events	2111802	Number of level 1 events

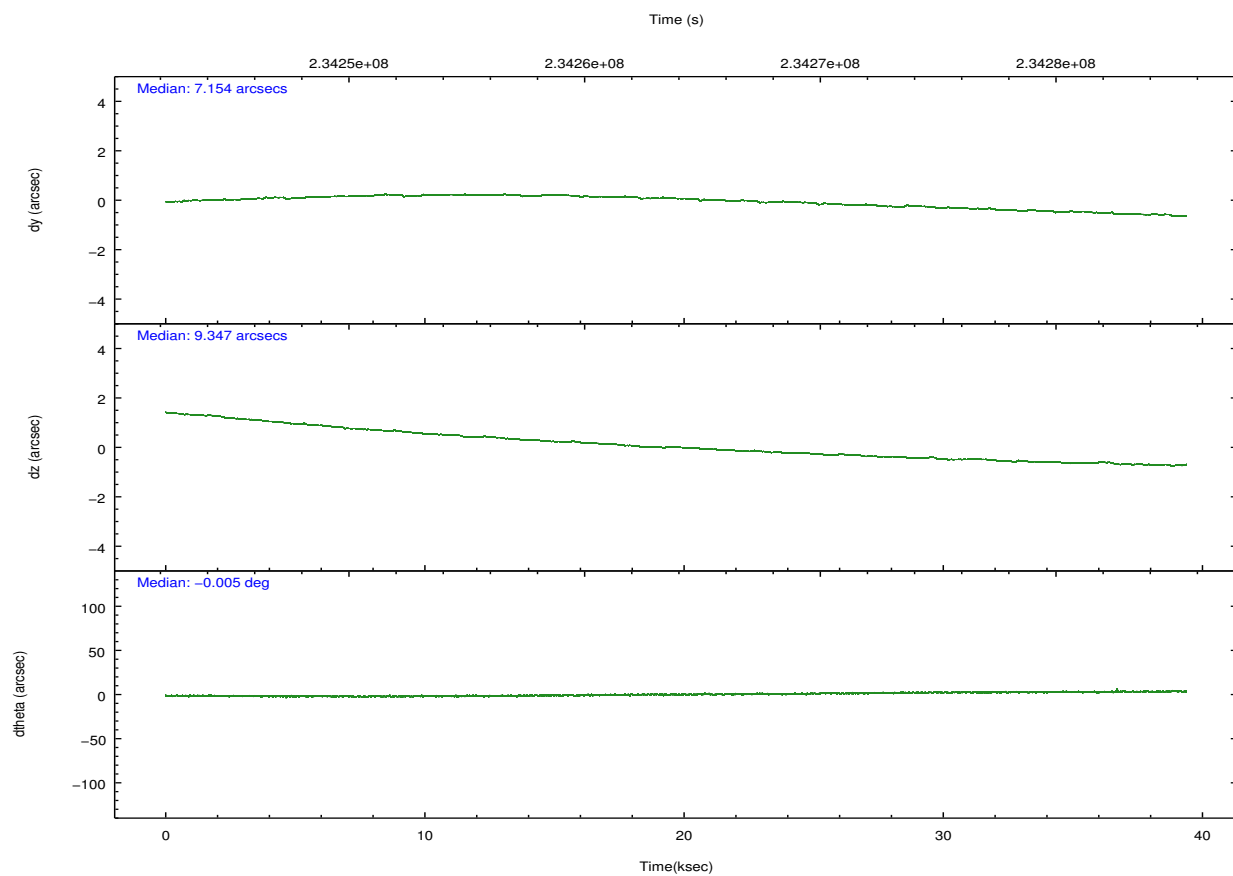
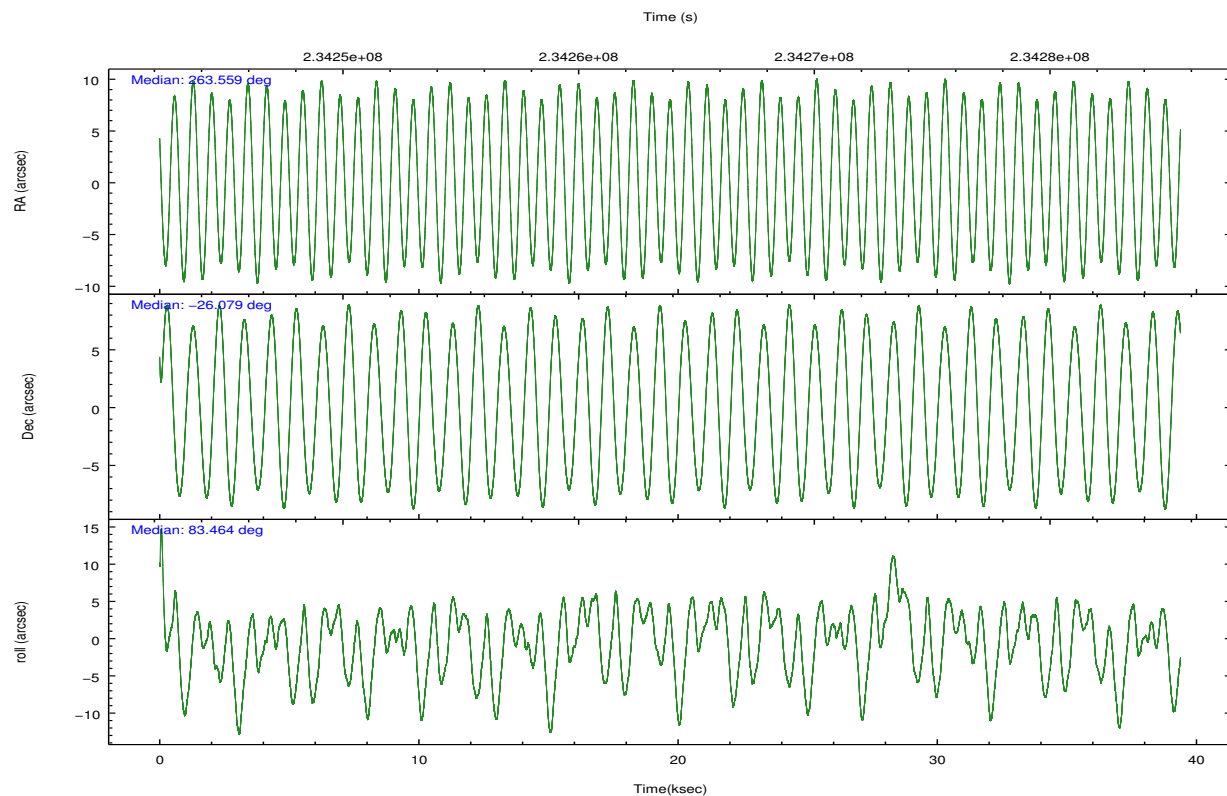
2.1.4 Events

	ccd 2	ccd 3	ccd 5	ccd 6	ccd 7	ccd 8		ccd 2	ccd 3	ccd 5	ccd 6	ccd 7	ccd 8
level 1 events	295296	286015	453340	296637	404616	375898	grade 0 events	16136	15996	25997	14945	14700	27625
rejected events	259321	250433	243073	259900	238031	292844		5%	5%	5%	5%	3%	7%
rejected %	87%	87%	53%	87%	58%	77%	grade 1 events	203	181	606	155	426	298
								0%	0%	0%	0%	0%	0%
							grade 2 events	7408	6738	61679	7609	33395	18087
								2%	2%	13%	2%	8%	4%
							grade 3 events	3318	3352	8111	3490	14691	8672
								1%	1%	1%	1%	3%	2%
							grade 4 events	3311	3456	7459	3439	14663	8120
								1%	1%	1%	1%	3%	2%
							grade 5 events	11715	12916	33259	13882	38482	18042
								3%	4%	7%	4%	9%	4%
							grade 6 events	5805	6043	107054	7261	89162	20559
								1%	2%	23%	2%	22%	5%
							grade 7 events	247400	237333	209175	245856	199097	274495
								83%	82%	46%	82%	49%	73%

2.2 Compared Parameters

Parameter	Planned	Actual	Parameter	Planned	Actual
Instrument	ACIS	ACIS	Obspar format version number	7	7
Detector	ACIS-235678	ACIS-235678	Obspar file type	PREDICTED	ACTUAL
Grating	NONE	NONE	Obspar update status	NONE	UPDATED
Data mode	FAINT	FAINT	Number of optional ACIS chips dropped	0	0
Observation mode	POINTING	POINTING	On-chip summing requested	N	N
[deg] Pointing RA	263.571783	263.5593184433288	Subarray requested	NONE	NONE
[deg] Pointing Dec	-26.104109	-26.07926383100201	Alternating exposures requested	N	N
[deg] Pointing Roll	83.316836	83.46797922116866	[s] Primary exposure time	0.000000	3.2
[mm] SIM focus pos	-0.684267	-0.6828225247311905			
[mm] SIM defocus	0	0.001444936568705701			
[mm] SIM translation stage pos	-190.132523	-190.1400660498719			
[mm] SIM translation stage offset	0	0.00754346686406393			
[s] Observation start time (MET)	234244375.184000	234242970.10352			
Observation start date	2005-06-04T03:51:51	2005-06-04T03:29:30			
[s] Observation end time (MET)	234283575.184000	234284498.49292			
Observation end date	2005-06-04T14:45:11	2005-06-04T15:01:38			
Read mode	TIMED	TIMED			

2.3 Aspect

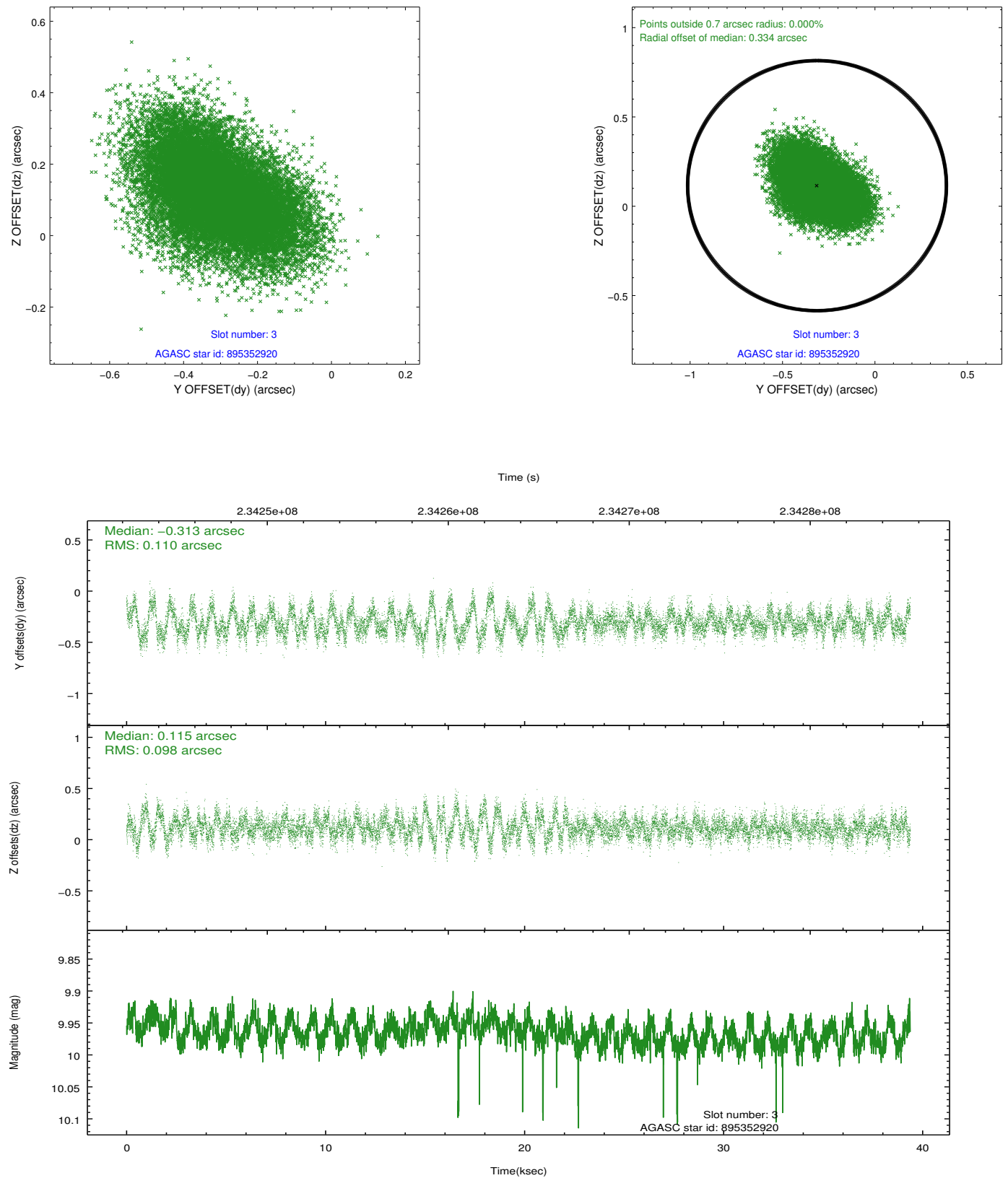


Slot Statistics

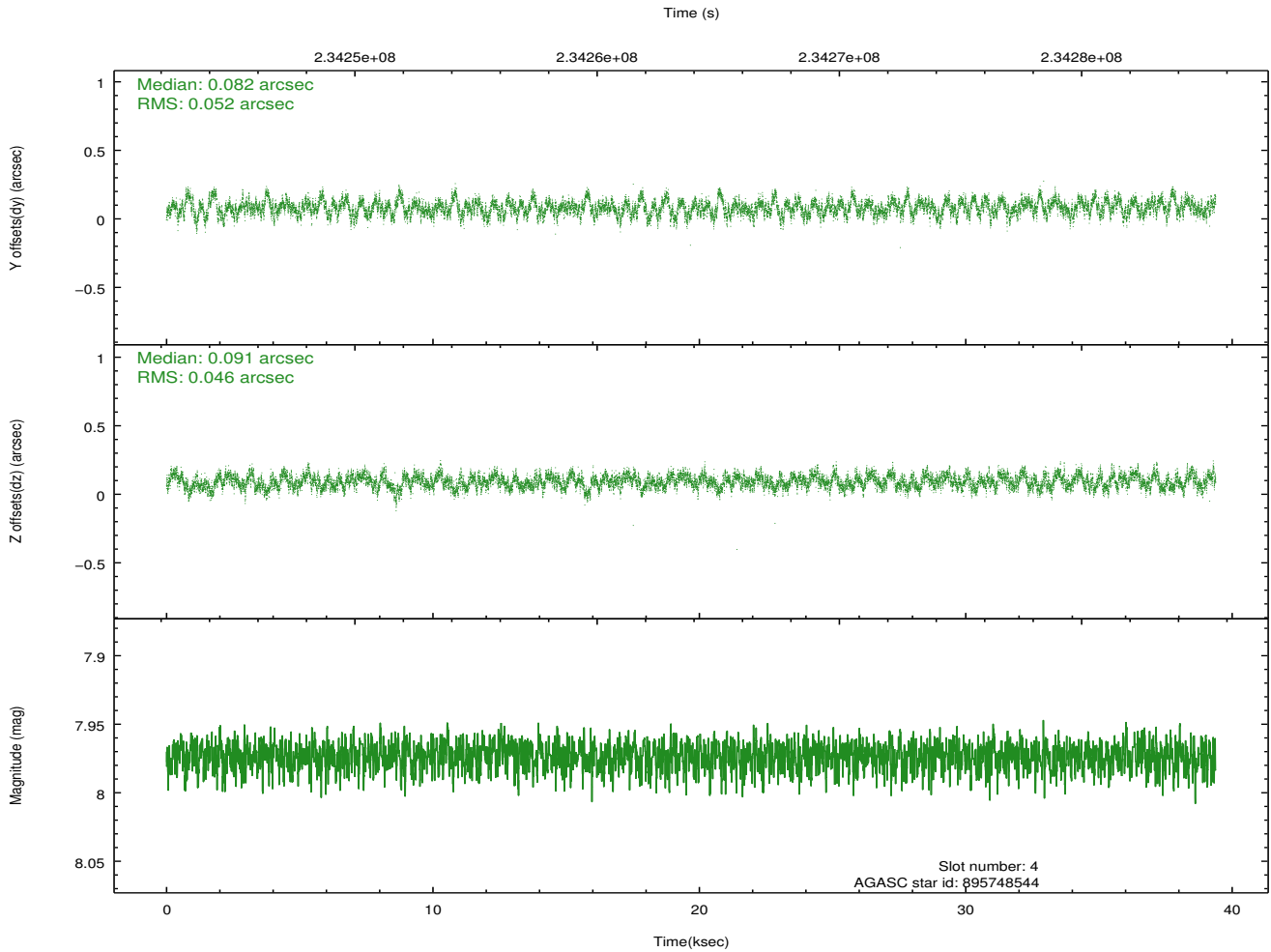
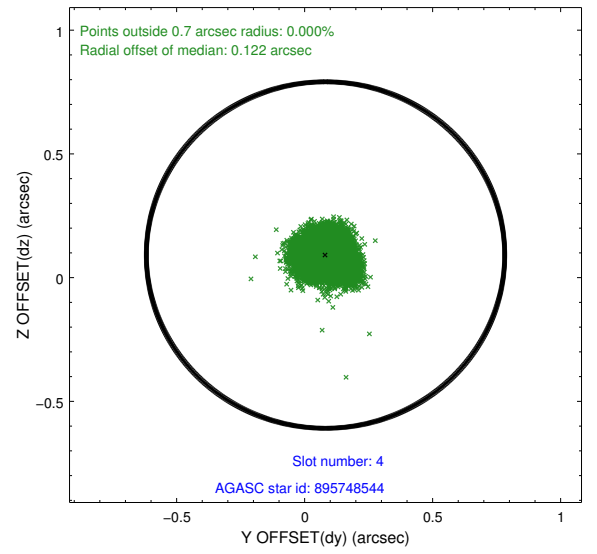
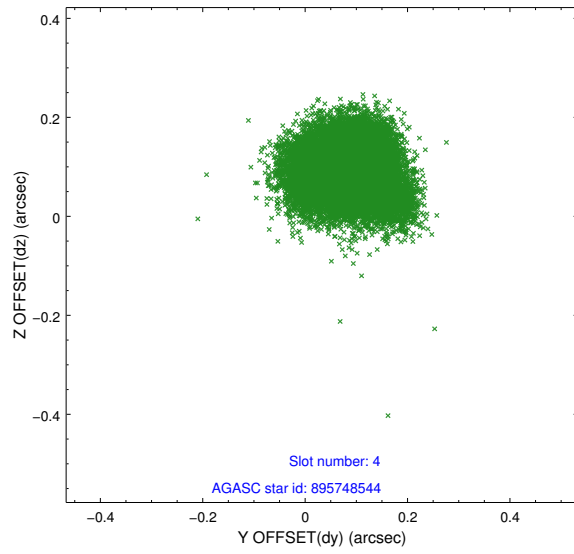
slot	status	id	mag	n_pts	med_dy	med_dz	dr1	dr2	ra	dec	mean_y	mean_z
0	FID	ACIS-S-2	7.10	9607	-0.046	-0.046	0.014	0.026	0.000000	0.000000	-759.86	-1730.73
1	FID	ACIS-S-4	7.20	9605	0.095	0.034	0.009	0.016	0.000000	0.000000	2153.53	177.84
2	FID	ACIS-S-5	7.23	9607	-0.079	0.021	0.013	0.024	0.000000	0.000000	-1812.73	171.47
3	GUIDE	895352920	9.97	19178	-0.313	0.115	0.156	0.260	264.217496	-25.713600	1634.95	-1916.75
4	GUIDE	895748544	7.97	19210	0.082	0.091	0.074	0.120	263.692859	-26.739685	-2226.90	-653.06
5	GUIDE	895881920	9.41	19203	0.161	-0.047	0.103	0.171	263.913988	-26.630022	-1753.28	-1314.47
6	GUIDE	895223200	10.46	19113	0.030	-0.275	0.218	0.336	262.834279	-26.055766	-111.64	2387.82
7	GUIDE	895353104	10.18	19193	0.045	0.108	0.226	0.381	263.748270	-25.444684	2423.54	-292.50

2.4 Star Slots

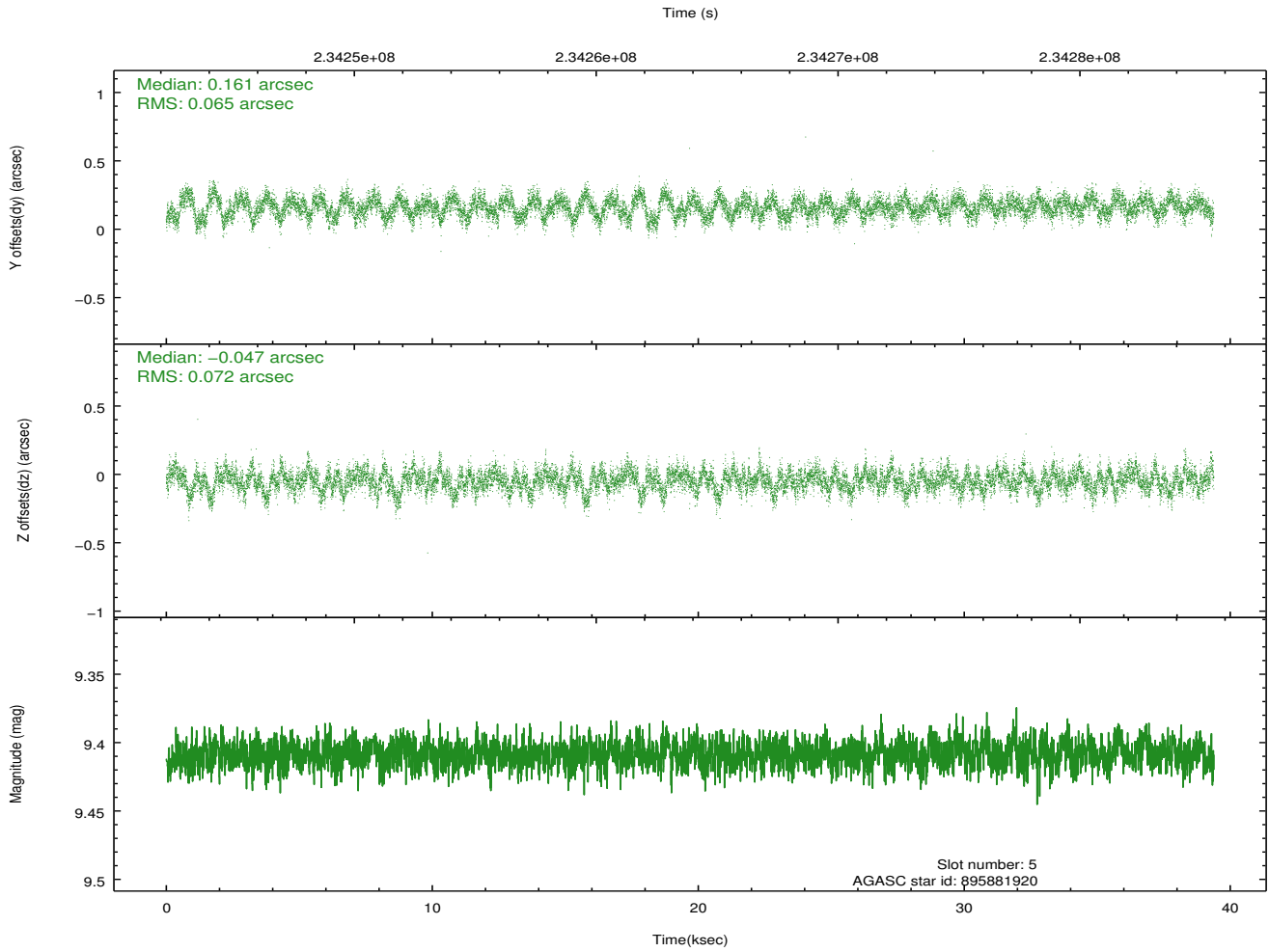
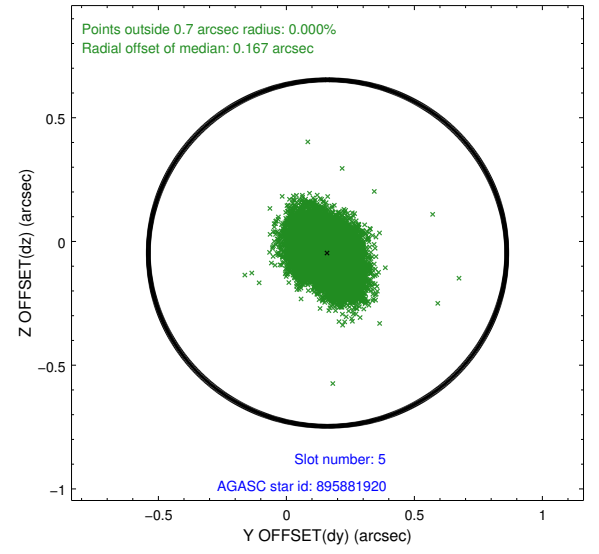
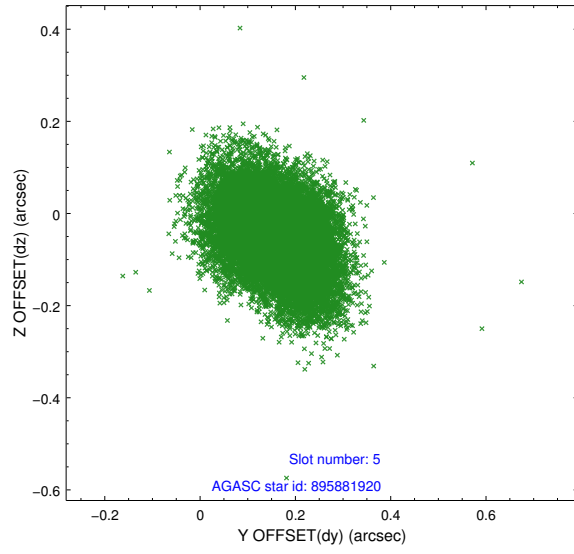
2.4.1 Slot 3



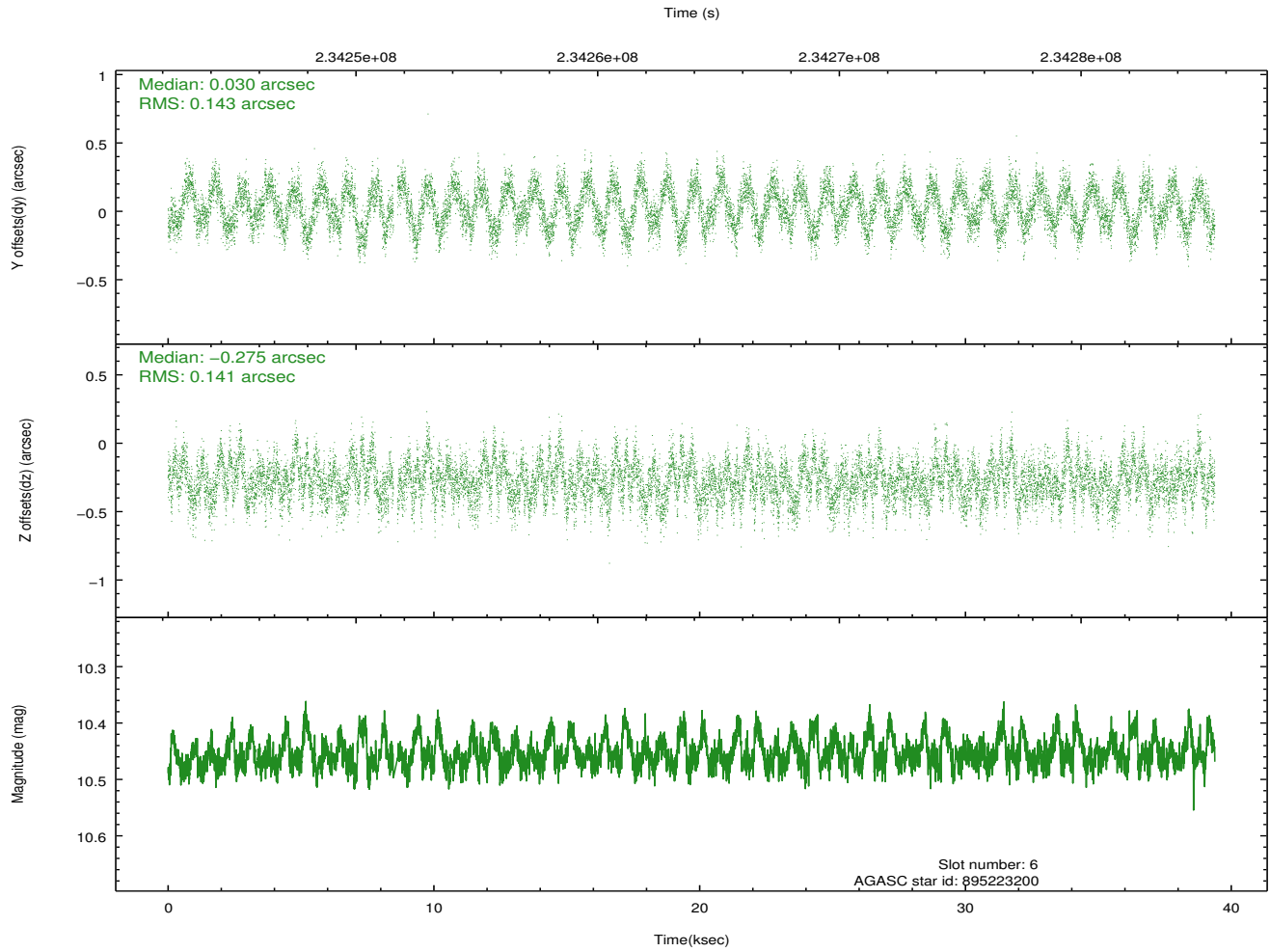
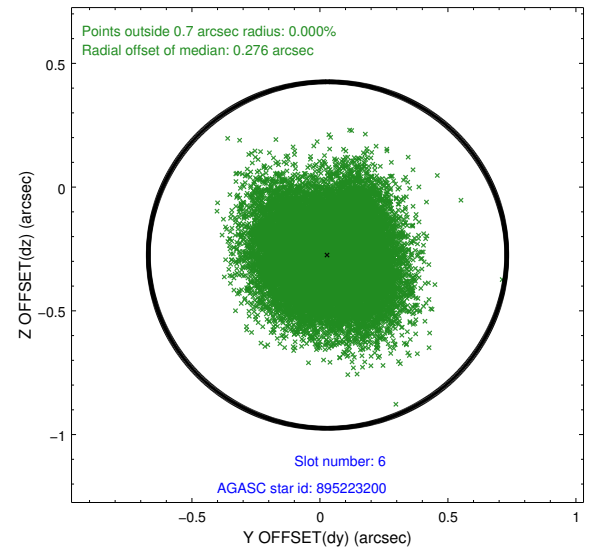
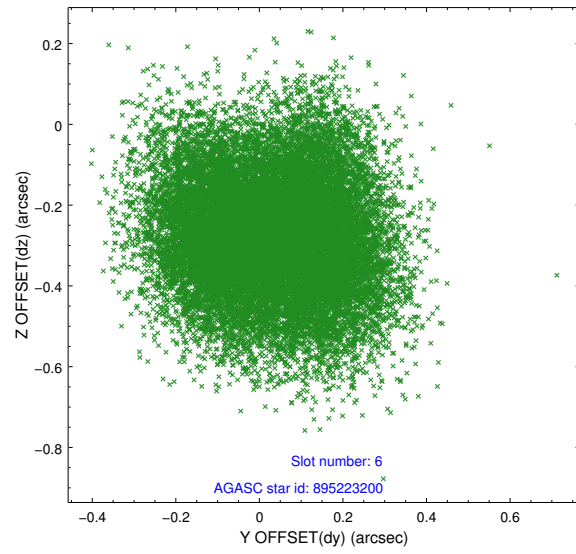
2.4.2 Slot 4



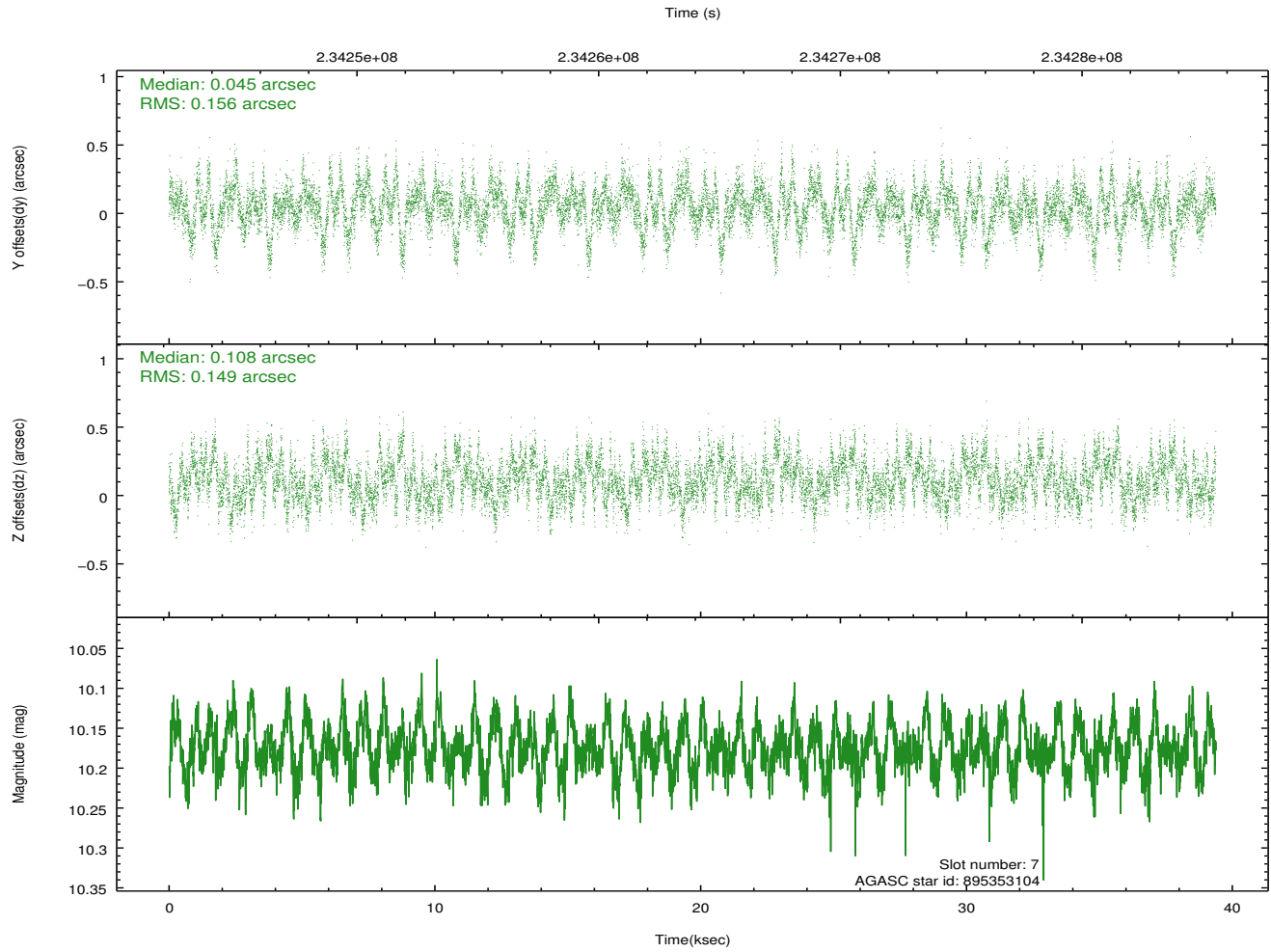
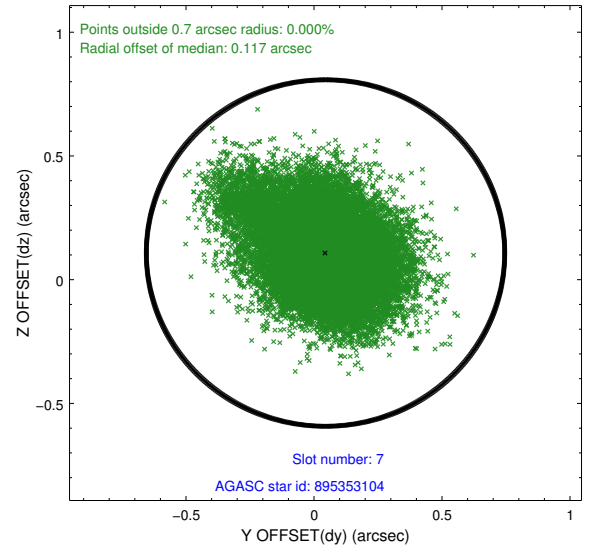
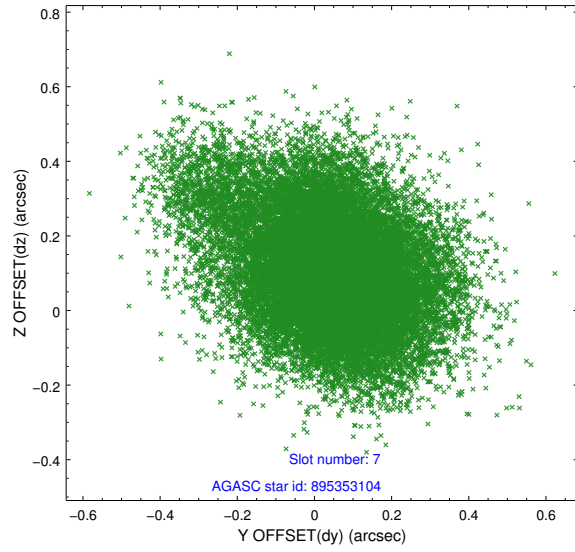
2.4.3 Slot 5



2.4.4 Slot 6

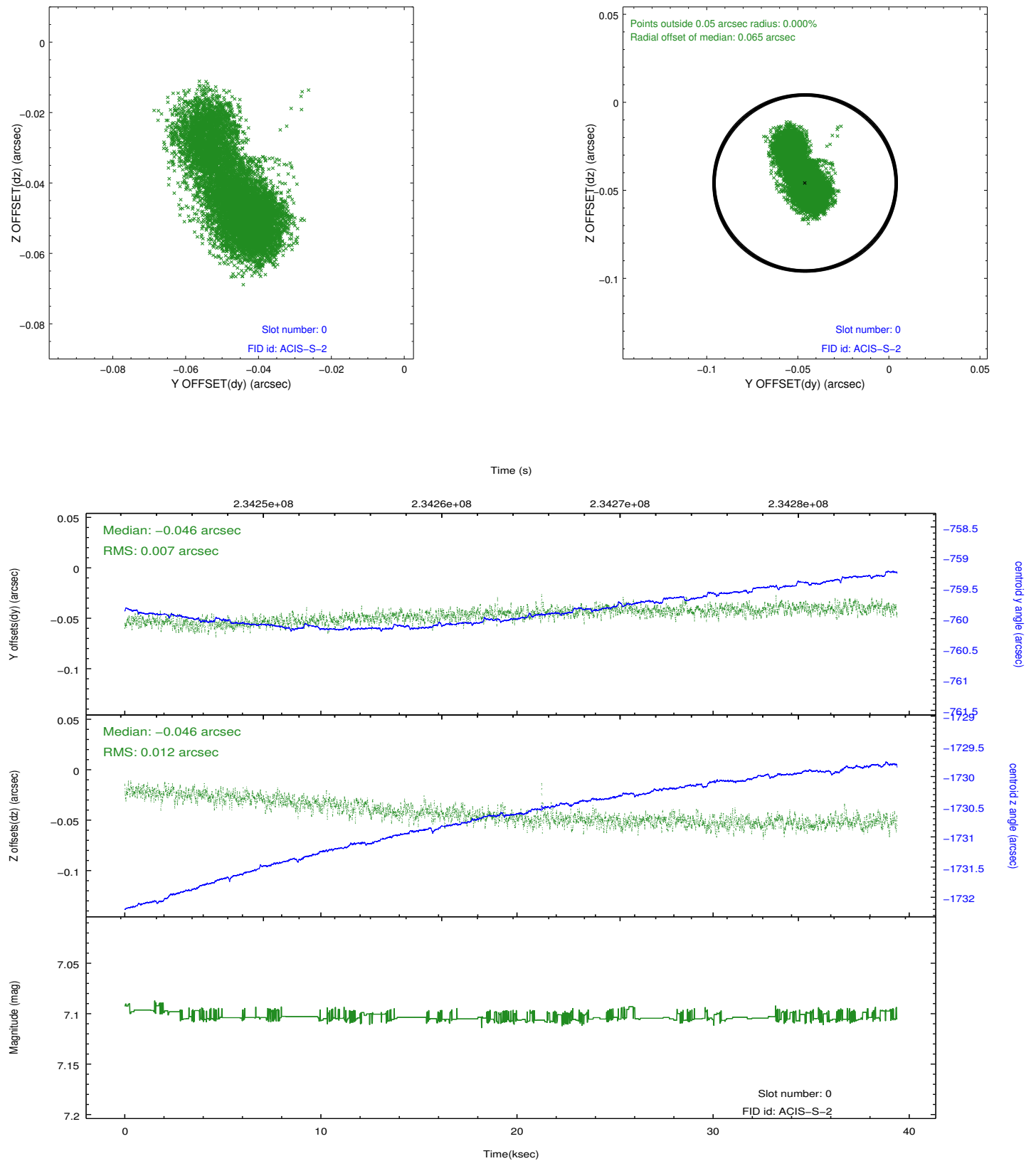


2.4.5 Slot 7

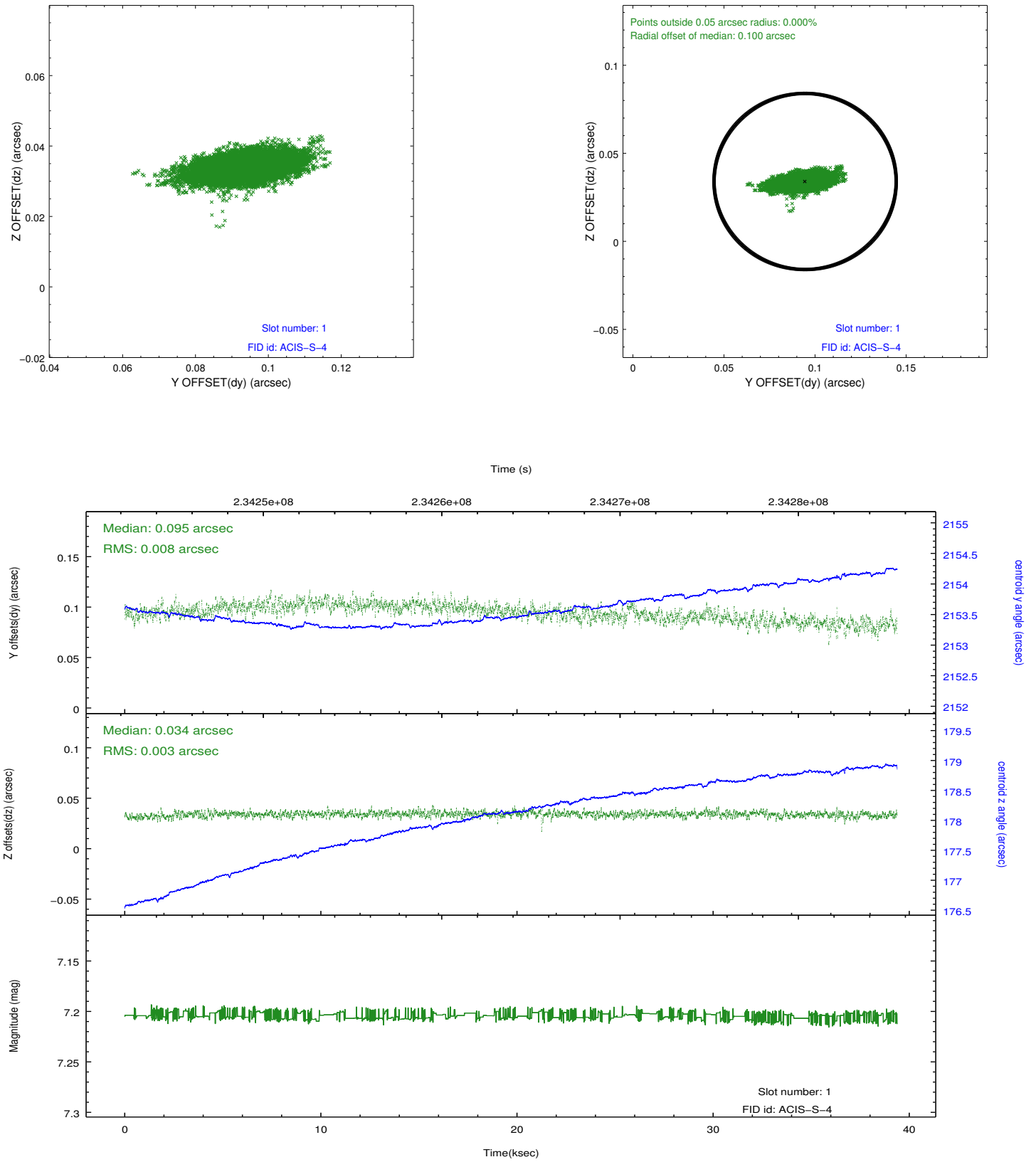


2.5 FID Slots

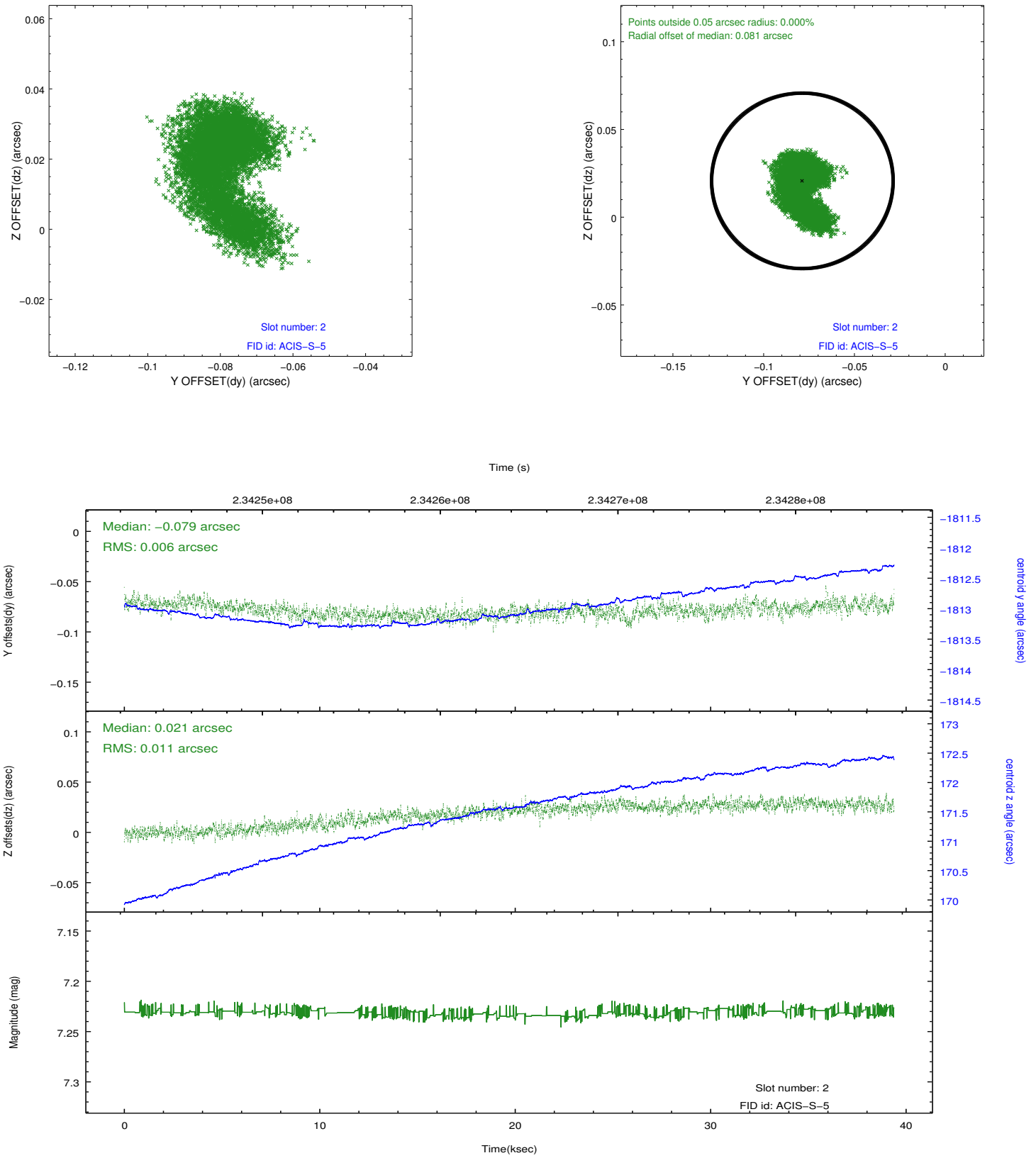
2.5.1 Slot 0



2.5.2 Slot 1



2.5.3 Slot 2



A Summary

A.1 Status

V&V Scientist	Jen Lauer
V&V Date (YYYY-MM-DD)	2013.01.17
V&V Edition	1
V&V Disposition and Status	OK
V&V Charge Time	38.95359

A.2 Comments