

# V&V Reference Report

## L2 ASCDS Version : 7.6.7

Observation 6283 - L2 Version 002  
Chandra X-Ray Center

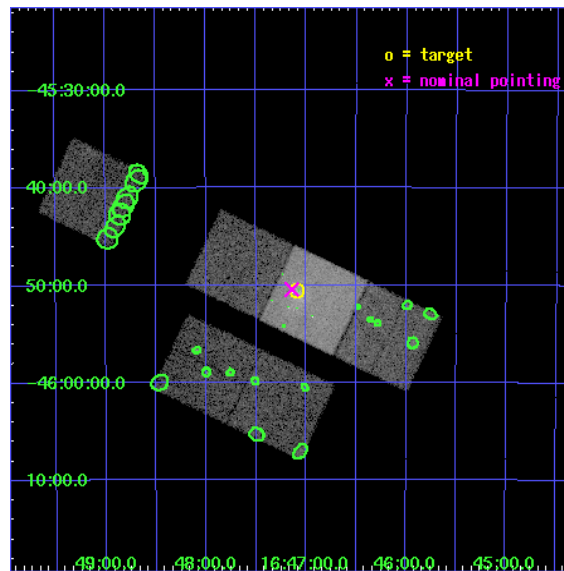
L2 Processing Date: Mar 4 2006

## Contents

<b>1</b>	<b>Front</b>	<b>2</b>
<b>2</b>	<b>OBI</b>	<b>3</b>
2.1	OBI . . . . .	3
2.1.1	Images . . . . .	3
2.1.2	Bias . . . . .	3
2.1.3	Parameters . . . . .	4
2.1.4	Events . . . . .	4
2.2	Compared Parameters . . . . .	5
2.3	Aspect . . . . .	6
2.4	Star Slots . . . . .	9
2.4.1	Slot 3 . . . . .	9
2.4.2	Slot 4 . . . . .	10
2.4.3	Slot 5 . . . . .	11
2.4.4	Slot 6 . . . . .	12
2.4.5	Slot 7 . . . . .	13
2.5	FID Slots . . . . .	14
2.5.1	Slot 0 . . . . .	14
2.5.2	Slot 1 . . . . .	15
2.5.3	Slot 2 . . . . .	16
<b>3</b>	<b>Point Sources</b>	<b>17</b>
<b>A</b>	<b>Summary</b>	<b>18</b>
A.1	Status . . . . .	18
A.2	Comments . . . . .	18

# 1 Front

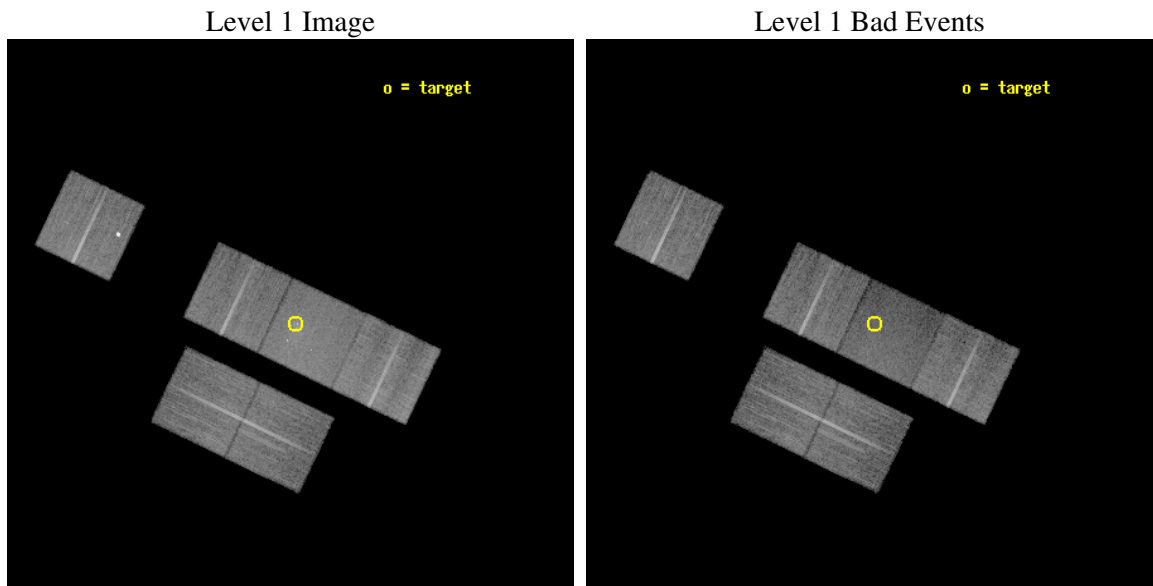
seq_num	200344
obs_id	6283
title	A Rich Population of Massive Young Stars in the Cluster Westerlund 1
observer	Dr. Stephen Skinner
object	Westerlund1
dtcycle	0
cycle	P
ra_targ	251.7725
dec_targ	-45.843528
ra_nom	251.78581764716
dec_nom	-45.840946566022
roll_nom	25.564598863135
revision	2
ontime	19049.599929035
livetime	18808.382424441
ontime2	19049.599929035
ontime3	19049.599929035
ontime4	19046.358928859
ontime6	19049.599929035
ontime7	19049.599929035
ontime8	19049.599929035
l2events	123633



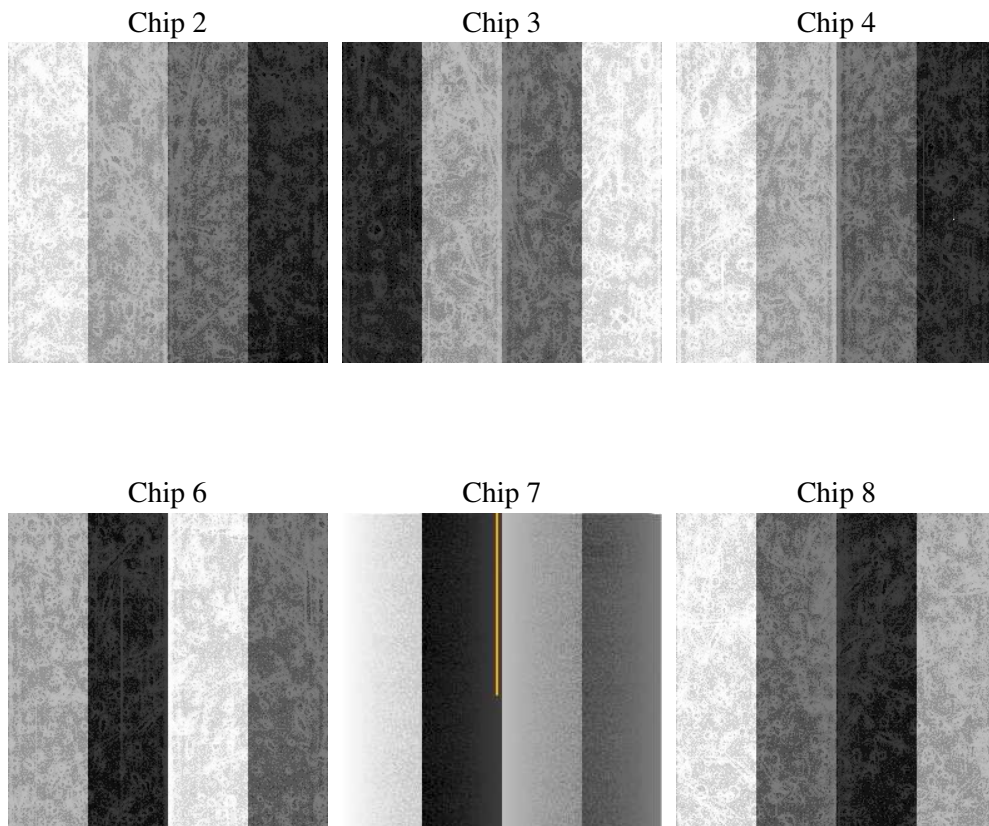
## 2 OBI

### 2.1 OBI

#### 2.1.1 Images



#### 2.1.2 Bias



### 2.1.3 Parameters

obi_num	0
ascdsver	7.6.7
caldsver	3.2.1
date	2006-03-04T05:13:18
revision	2

sched_exp_time	19000.000000
ontime	19053.910808772
ontime2	19053.910808772
ontime3	19053.910808772
ontime4	19050.669808596
ontime6	19053.910808772
ontime7	19053.910808772
ontime8	19053.910808772
l1events	769342

### 2.1.4 Events

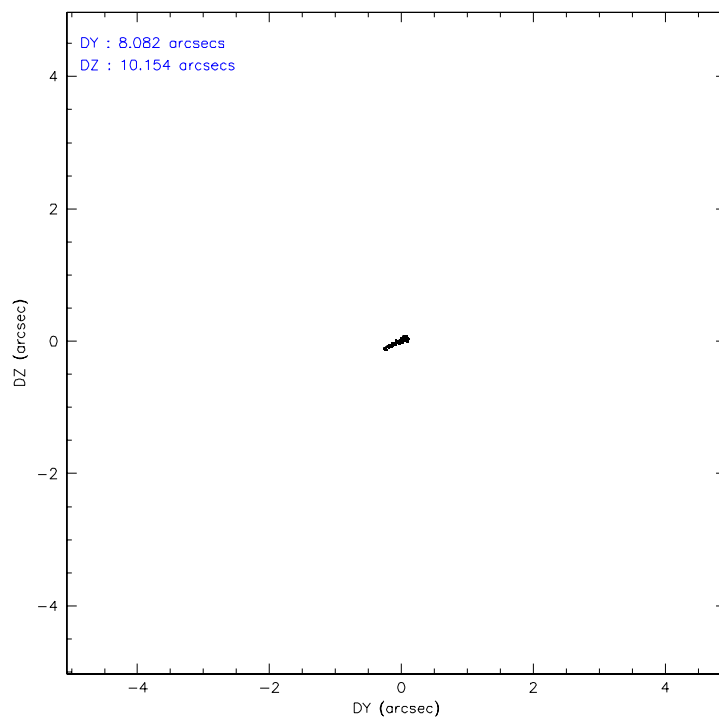
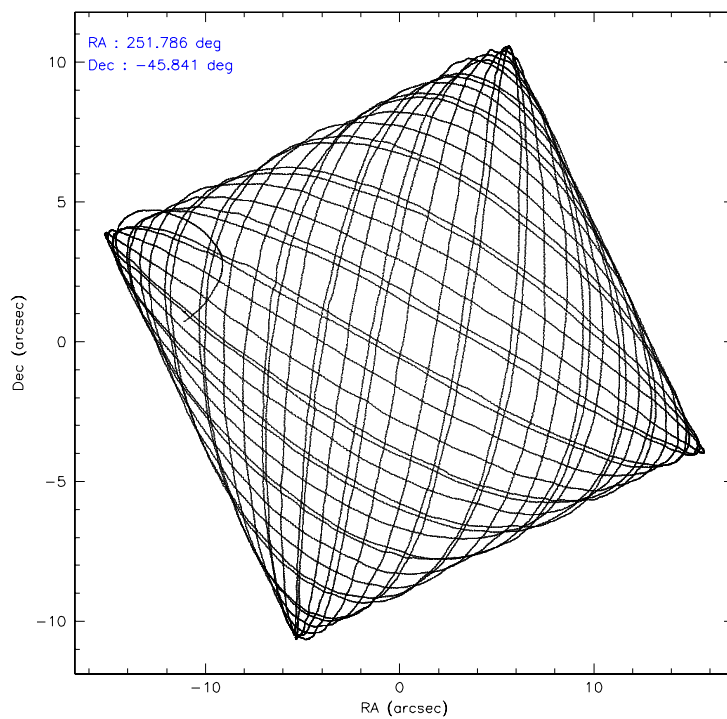
	ccd 2	ccd 3	ccd 4	ccd 6	ccd 7	ccd 8
level 1 events	114792	112004	138298	118505	138034	147709
rejected events	102516	99850	119954	103503	73784	109735
rejected %	89%	89%	86%	87%	53%	74%

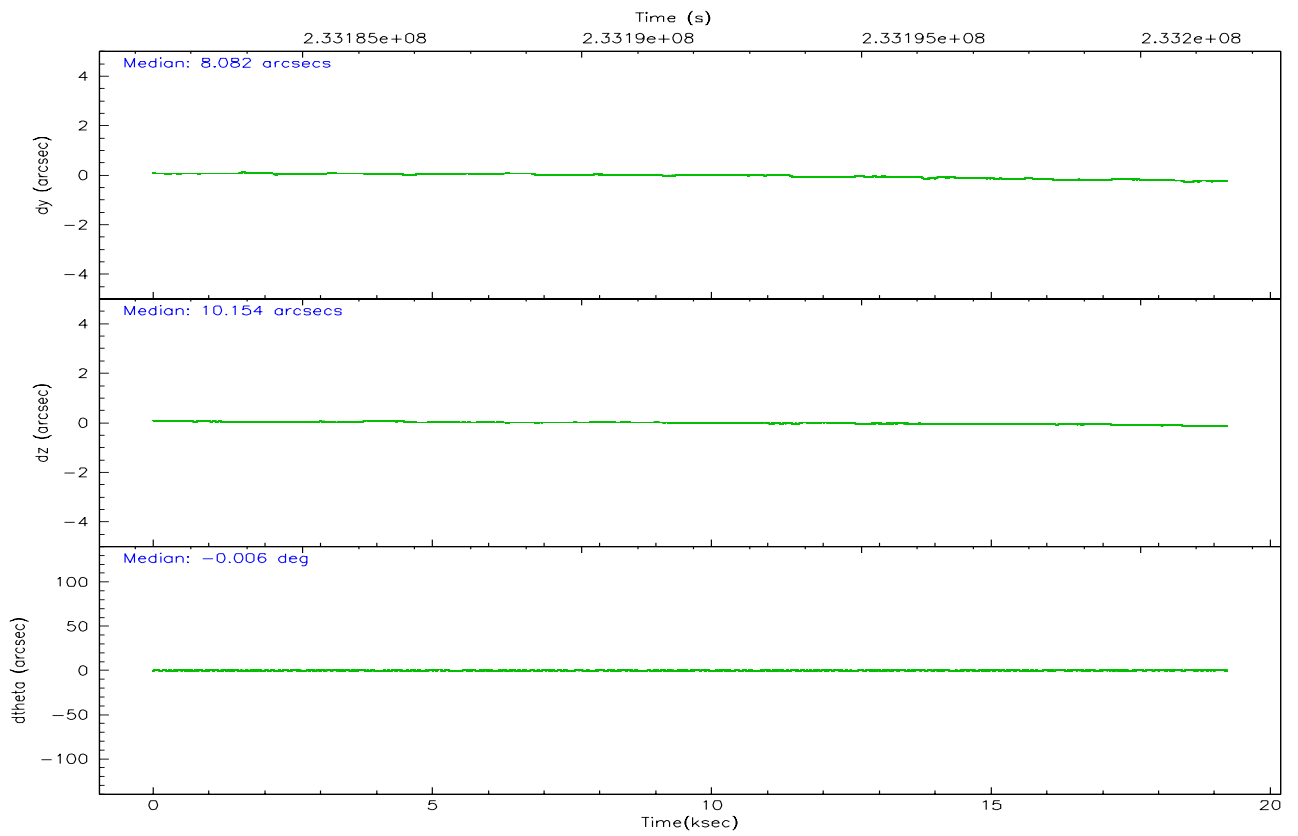
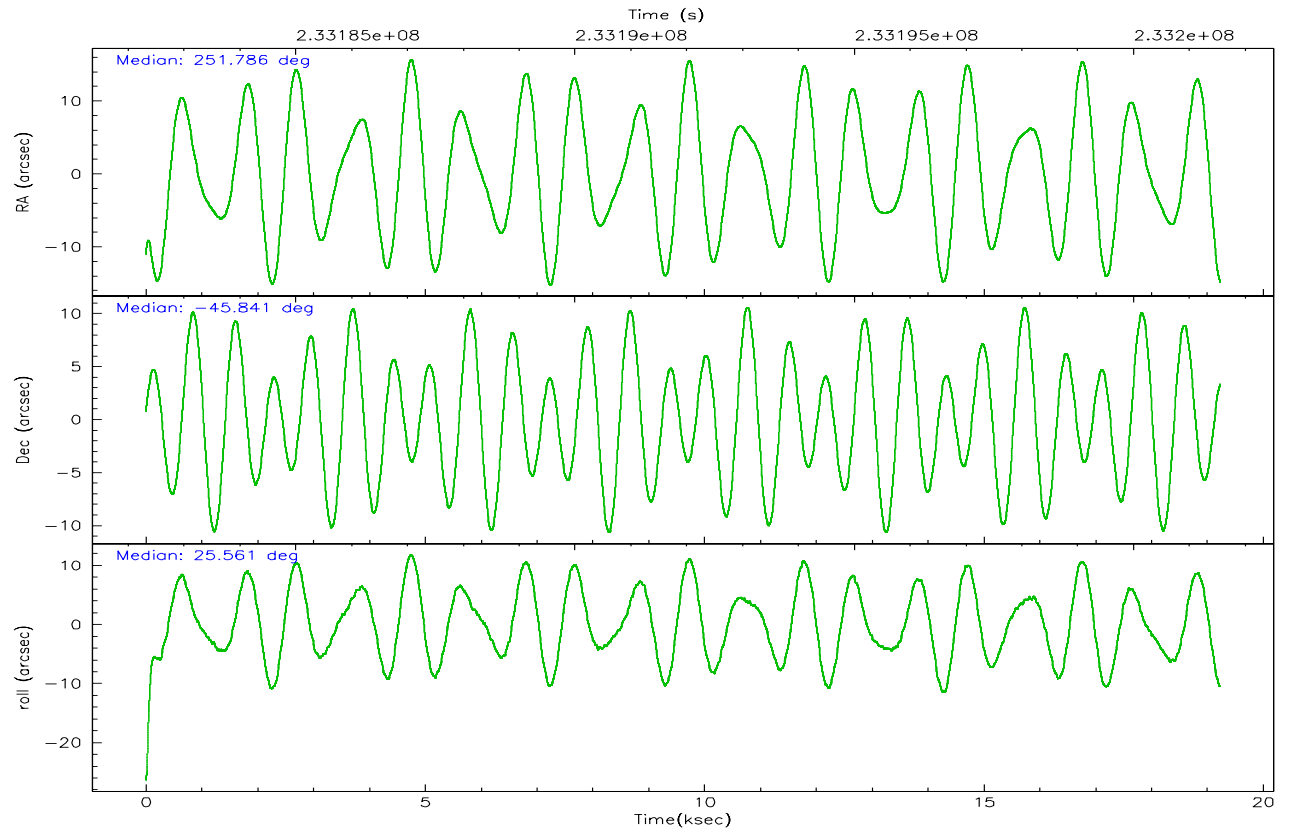
	ccd 2	ccd 3	ccd 4	ccd 6	ccd 7	ccd 8
grade 0 events	5180	4856	10637	6494	5231	13489
	4%	4%	7%	5%	3%	9%
grade 1 events	70	56	150	70	71	121
	0%	0%	0%	0%	0%	0%
grade 2 events	2627	2510	2945	2988	16499	7937
	2%	2%	2%	2%	11%	5%
grade 3 events	1229	1310	1401	1433	4123	3767
	1%	1%	1%	1%	2%	2%
grade 4 events	1200	1278	1322	1406	4012	3561
	1%	1%	0%	1%	2%	2%
grade 5 events	3642	4539	4303	4733	9713	6590
	3%	4%	3%	3%	7%	4%
grade 6 events	2042	2201	2043	2685	34393	9221
	1%	1%	1%	2%	24%	6%
grade 7 events	98802	95254	115497	98696	63992	103023
	86%	85%	83%	83%	46%	69%

## 2.2 Compared Parameters

Parameter	Planned	Actual	Parameter	Planned	Actual
Instrument	ACIS	ACIS	Obspar format version number	6	6
Detector	ACIS-234678	ACIS-234678	Obspar file type	PREDICTED	ACTUAL
Grating	NONE	NONE	Obspar update status	NONE	UPDATED
Data mode	FAINT	FAINT	On-chip summing requested	N	N
Observation mode	POINTING	POINTING	Subarray requested	NONE	NONE
Pointing RA	251.764201	251.7858176471586	Alternating exposures requested	N	N
Pointing Dec	-45.863616	-45.84094656602151	Primary exposure time	0.000000	3.2
Pointing Roll	25.392476	25.56459886313477			
SIM focus pos (mm)	-0.684267	-0.6828225247311905			
SIM defocus (mm)	0	0.001444936568705701			
SIM translation stage pos (mm)	-190.132523	-190.1400660498719			
SIM translation stage offset (mm)	0	0.00754346686406393			
Observation start time	233182548.184000	233181519.51762			
Observation start date	2005-05-22T20:54:44	2005-05-22T20:38:39			
Observation end time	233201548.184000	233202399.28108			
Observation end date	2005-05-23T02:11:24	2005-05-23T02:26:39			
Read mode	TIMED	TIMED			

## 2.3 Aspect



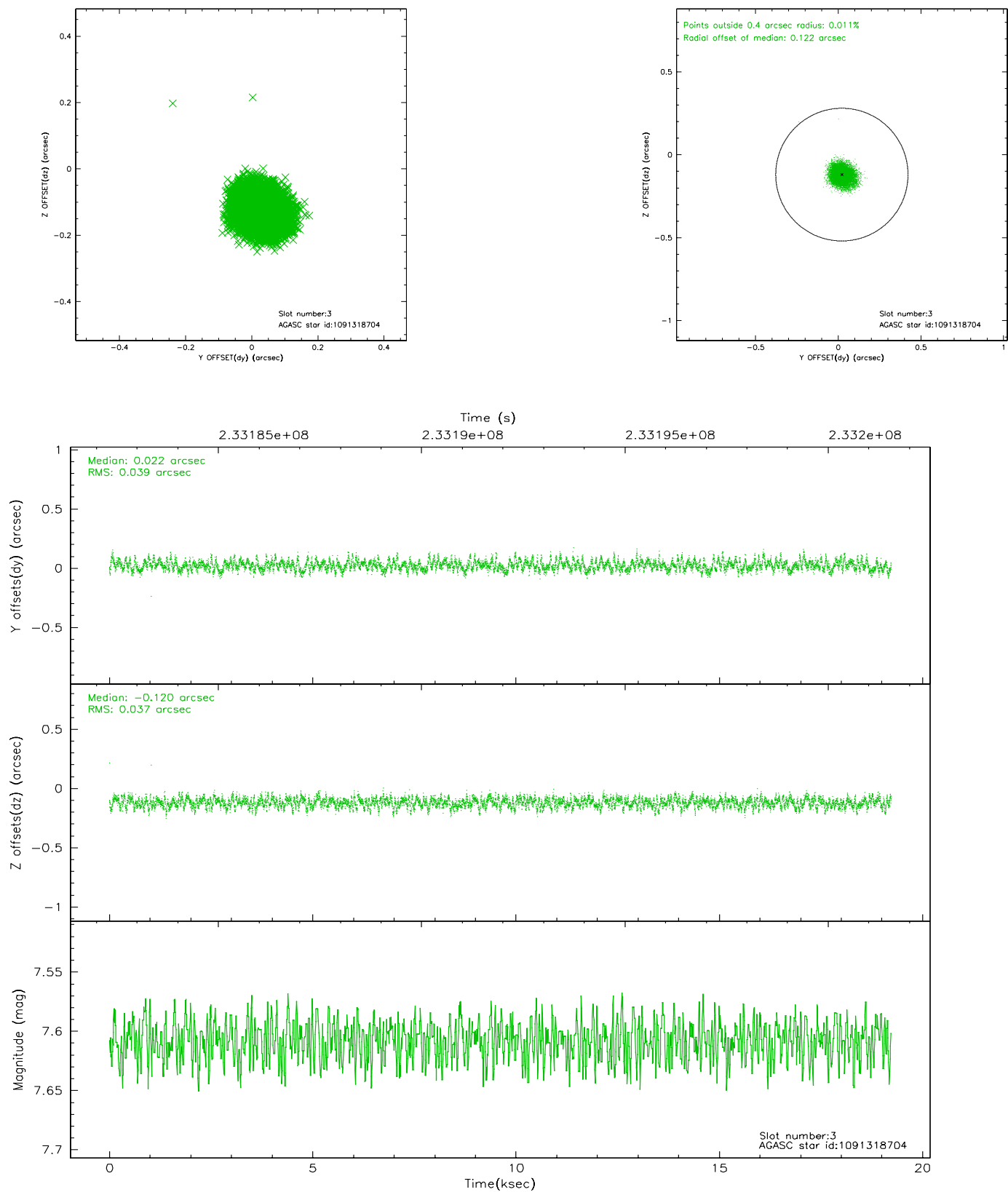


### Slot Statistics

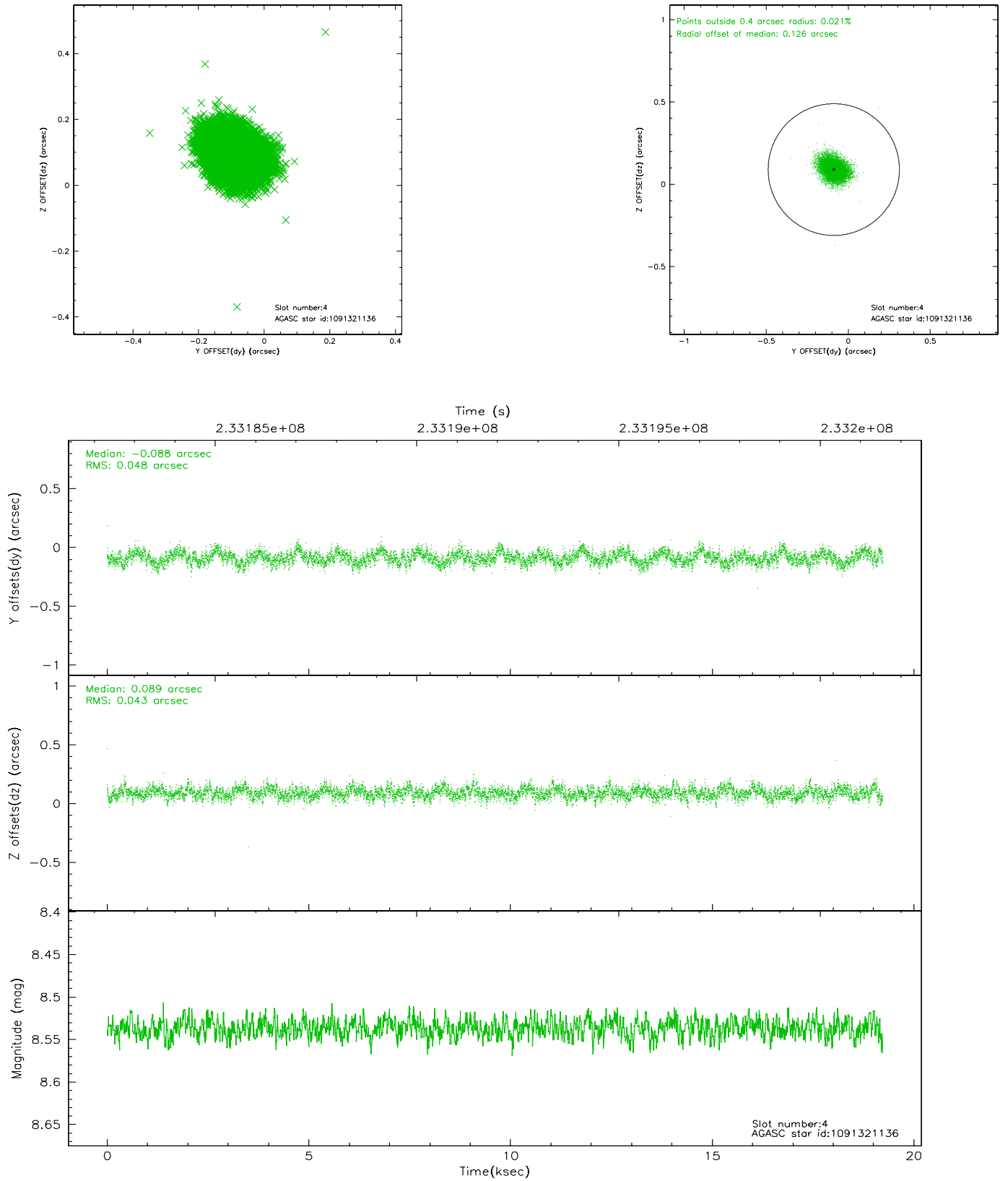
slot	status	id	mag	n_pts	med_dy	med_dz	dr1	dr2	ra	dec	mean_y	mean_z
0	FID	ACIS-S-2	7.10	4690	-0.031	-0.002	0.006	0.010	0.000000	0.000000	-760.81	-1731.42
1	FID	ACIS-S-4	7.21	4690	0.080	0.016	0.006	0.012	0.000000	0.000000	2152.43	176.95
2	FID	ACIS-S-5	7.23	4690	-0.080	-0.005	0.008	0.014	0.000000	0.000000	-1813.49	170.72
3	GUIDE	1091318704	7.61	9381	0.022	-0.120	0.058	0.092	251.955714	-45.390313	1168.16	1331.14
4	GUIDE	1091321136	8.54	9376	-0.088	0.089	0.068	0.110	252.629031	-45.865288	1951.35	-945.28
5	GUIDE	1091321752	6.94	9381	0.058	0.012	0.046	0.075	251.516776	-46.486101	-1514.71	-1762.48
6	GUIDE	1091341680	8.43	9380	-0.009	-0.013	0.066	0.102	251.240217	-46.114317	-1569.95	-258.72
7	GUIDE	1091343368	6.91	9380	0.016	0.032	0.055	0.082	251.526552	-46.531998	-1563.70	-1922.35

## 2.4 Star Slots

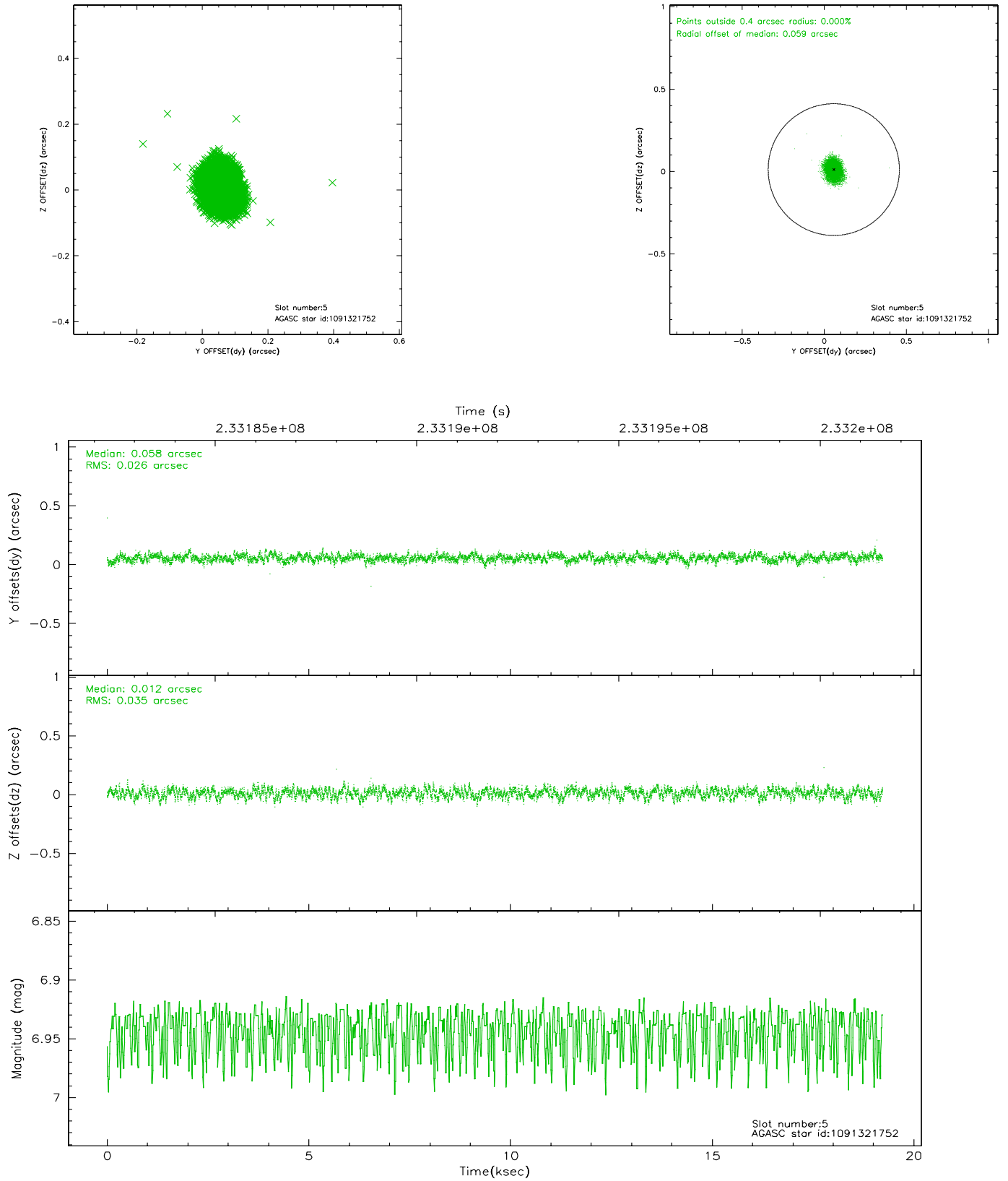
### 2.4.1 Slot 3



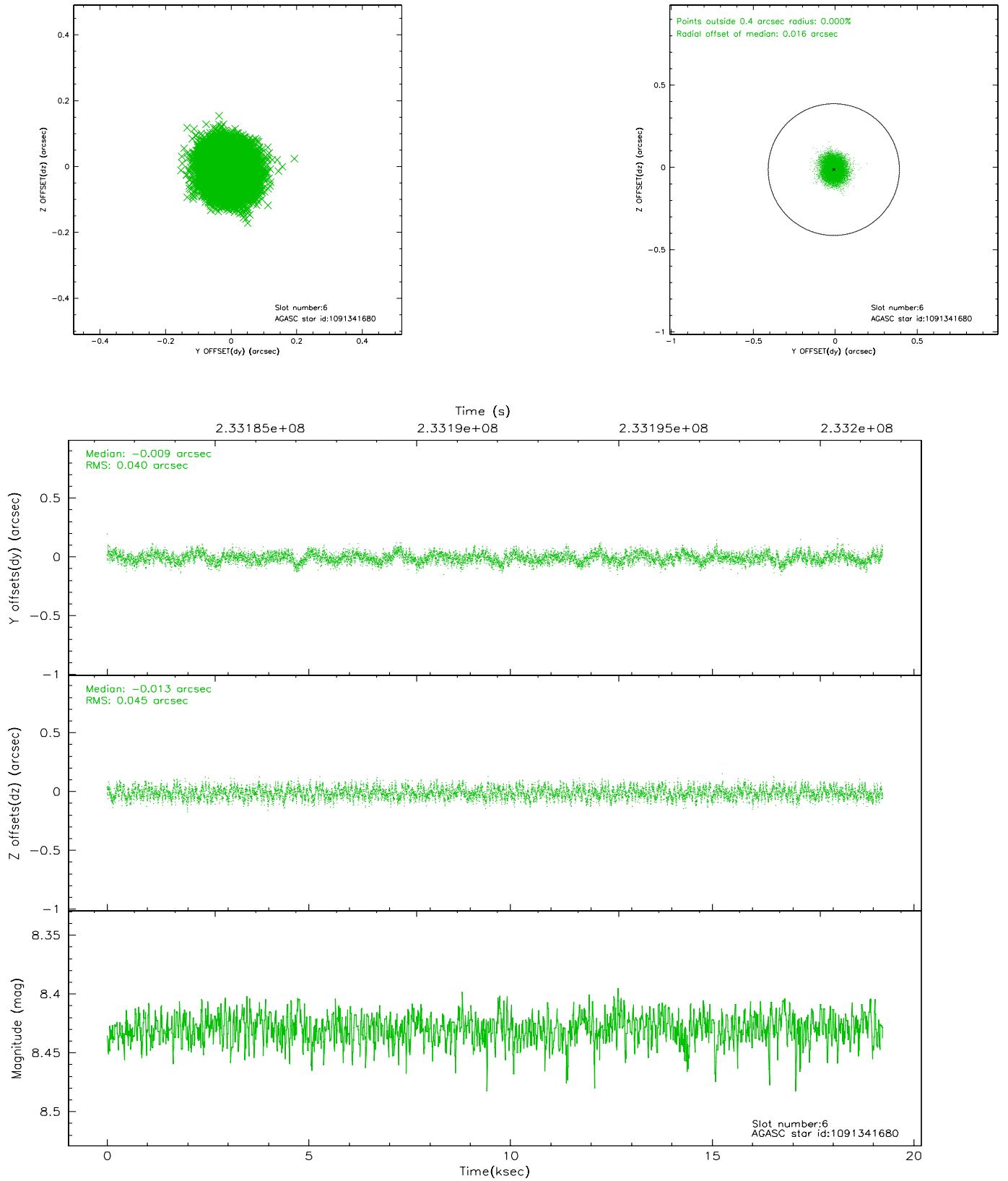
## 2.4.2 Slot 4



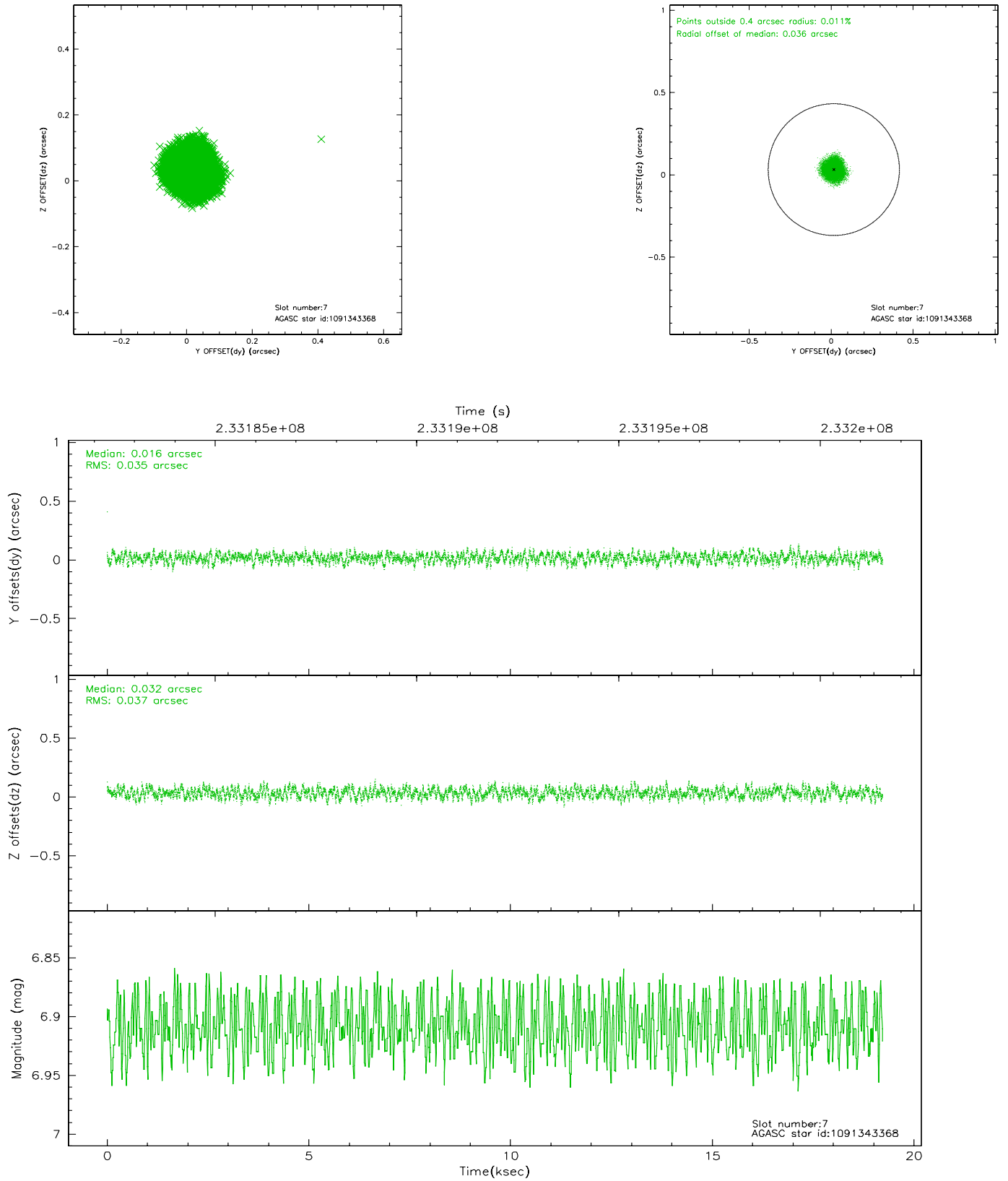
### 2.4.3 Slot 5



## 2.4.4 Slot 6

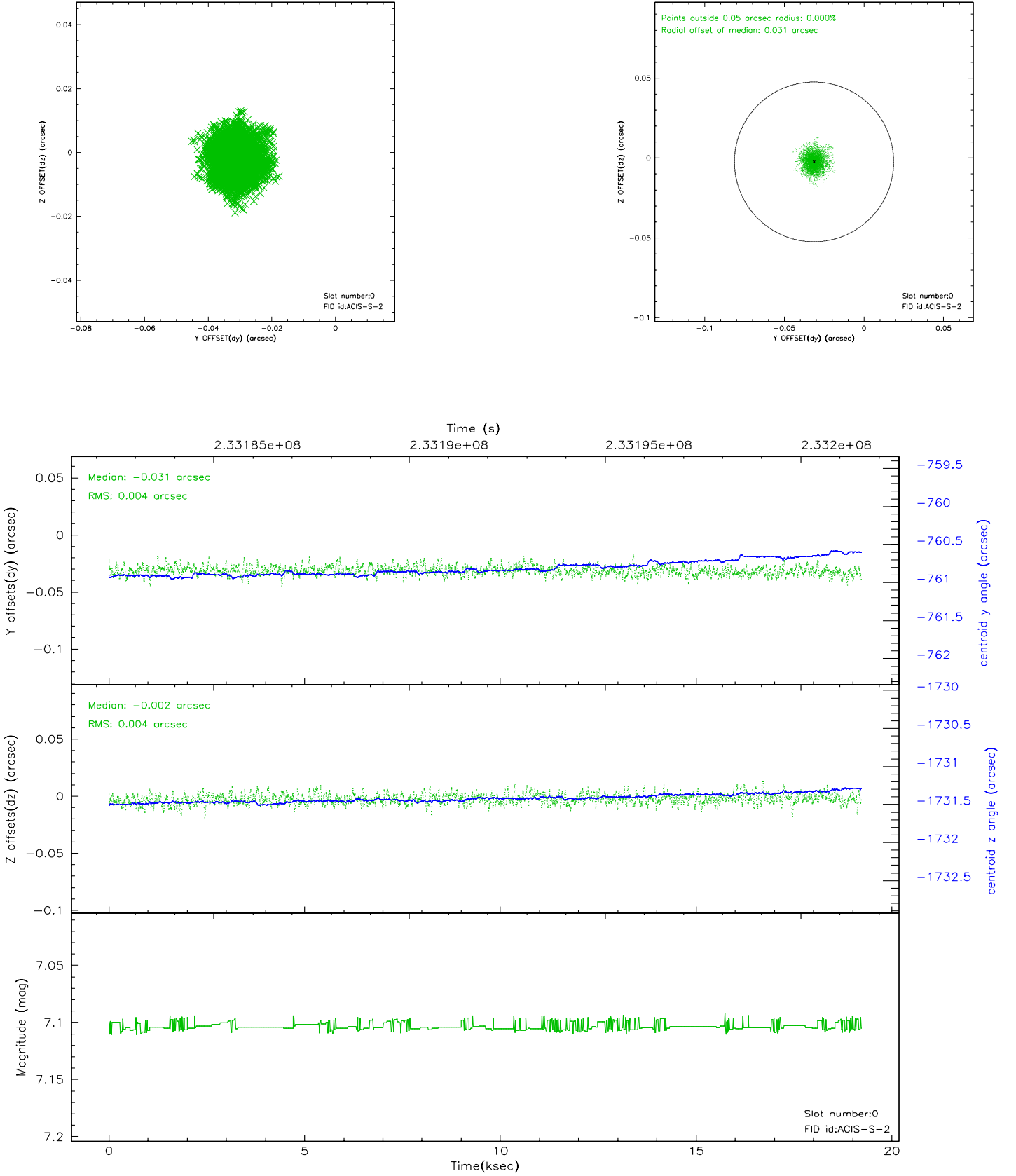


## 2.4.5 Slot 7

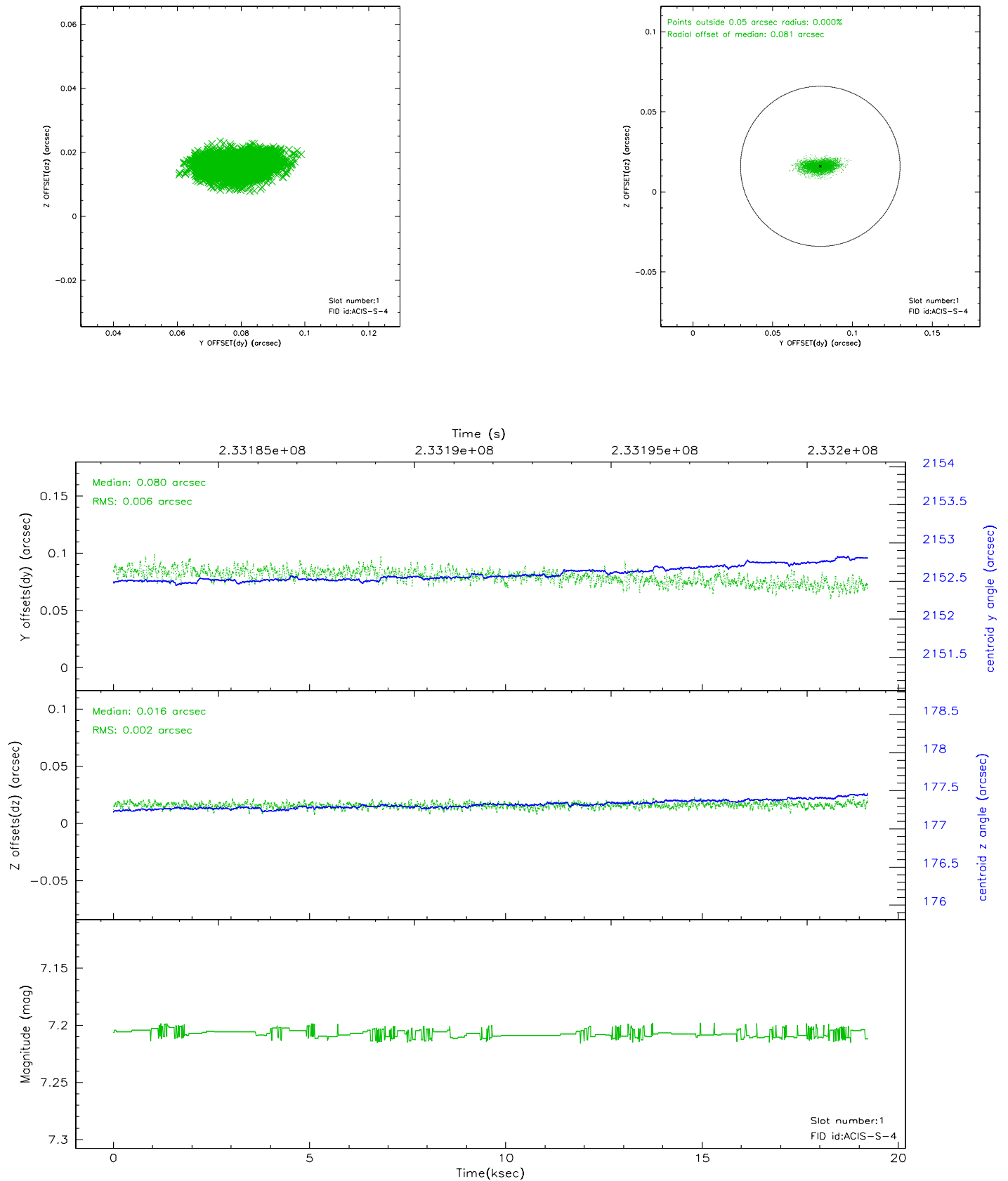


## 2.5 FID Slots

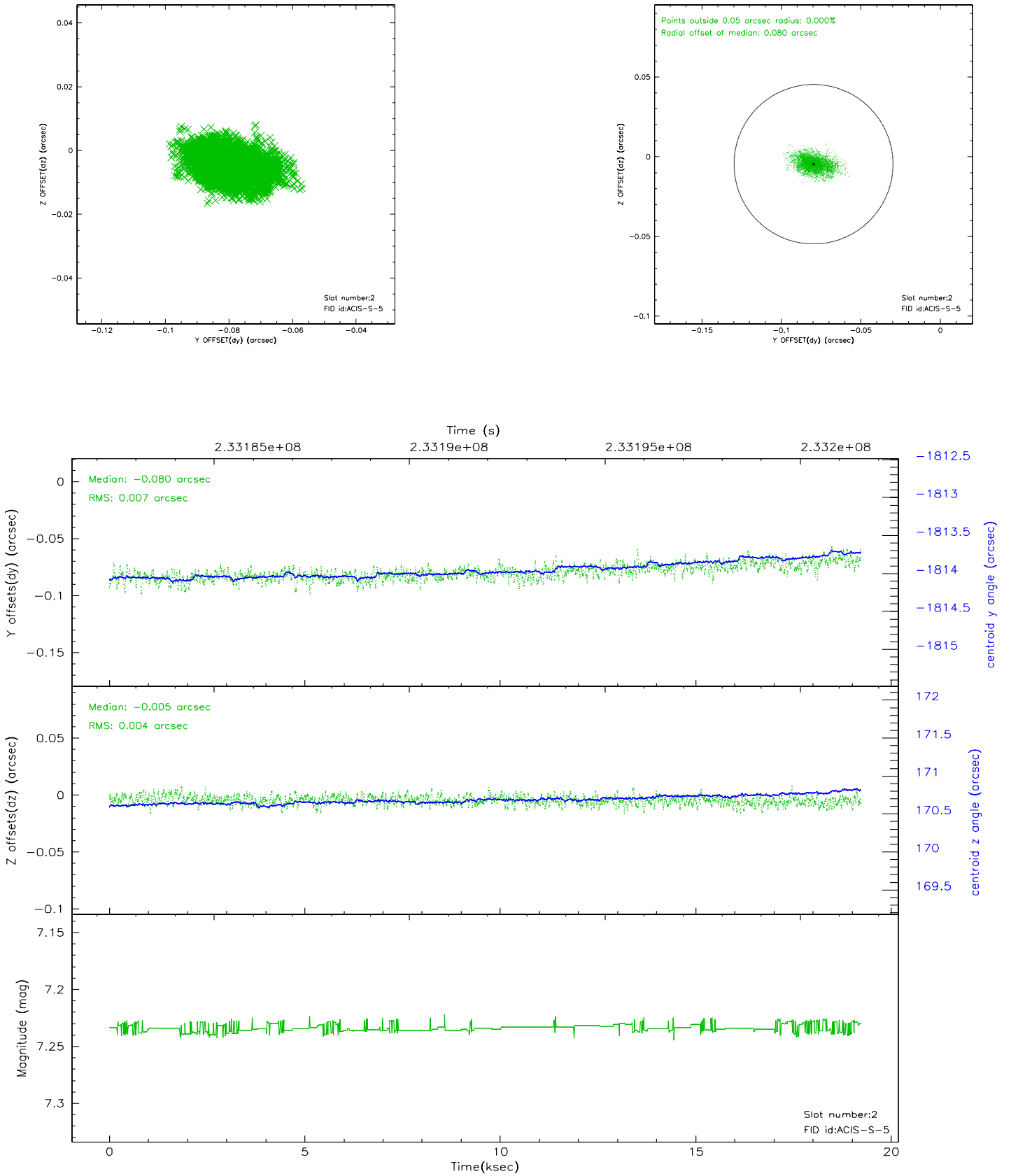
### 2.5.1 Slot 0



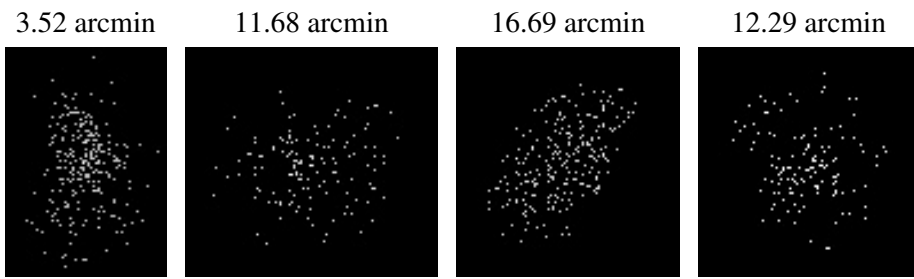
## 2.5.2 Slot 1



### 2.5.3 Slot 2



### 3 Point Sources



## A Summary

### A.1 Status

V&V Scientist	Beth Sundheim
V&V Date (YYYY-MM-DD)	2006.03.05
V&V Edition	1
V&V Disposition and Status	OK
V&V Charge Time	19.04959

### A.2 Comments