

V&V Reference Report

L2 ASCDS Version : 8.5.1

Observation 5415 - L2 Version 3
Chandra X-Ray Center

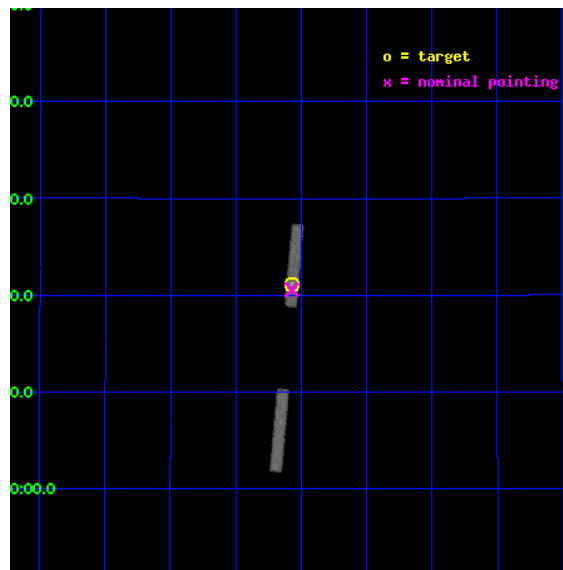
L2 Processing Date : Dec 16 2012

Contents

1	Front	2
2	OBI	3
2.1	OBI	3
2.1.1	Images	3
2.1.2	Bias	3
2.1.3	Parameters	4
2.1.4	Events	4
2.2	Compared Parameters	5
2.3	Aspect	6
2.4	Star Slots	9
2.4.1	Slot 3	9
2.4.2	Slot 4	10
2.4.3	Slot 5	11
2.4.4	Slot 6	12
2.5	FID Slots	13
2.5.1	Slot 0	13
2.5.2	Slot 1	14
2.5.3	Slot 2	15
A	Summary	16
A.1	Status	16
A.2	Comments	16

1 Front

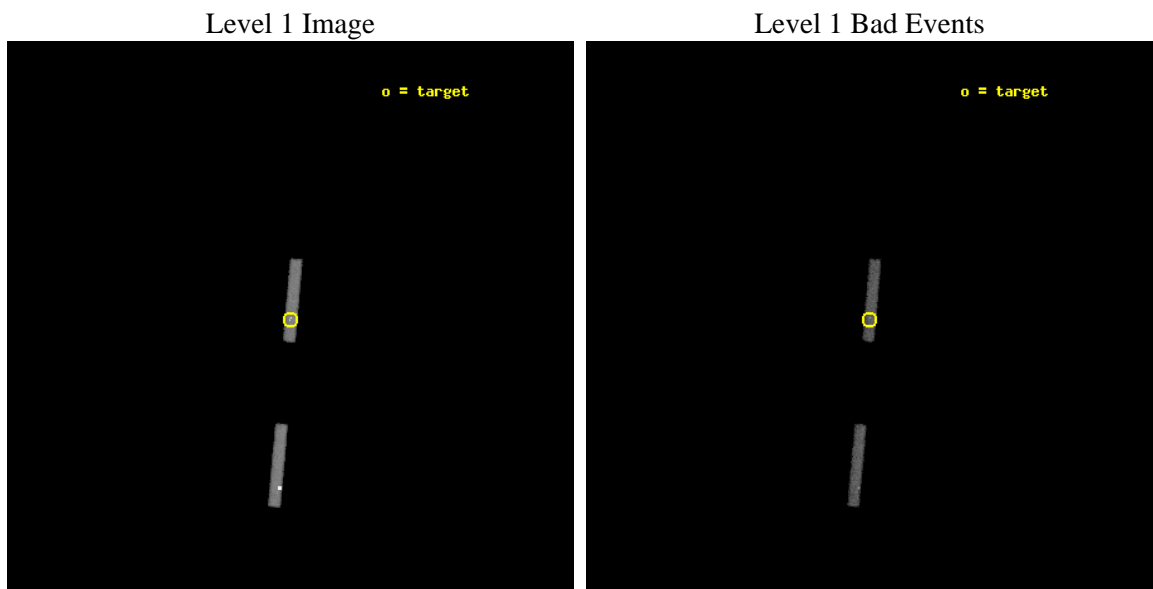
seq_num	200348	Sequence number
obs_id	5415	Observation id
title	Untangling the Accretion Spots on Classical T Tauri Stars	Proposal
observer	Dr. Andisheh Mahdavi	Principal investigator
object	GK Tau	Source name
dtcycle	0	
cycle	P	events from which exps? Prim/Second/Both
ra_targ	68.39375	Observer's specified target RA [deg]
dec_targ	24.3525	Observer's specified target Dec [deg]
ra_nom	68.392845429129	Nominal RA [deg]
dec_nom	24.342859977078	Nominal Dec [deg]
roll_nom	275.15594350016	Nominal Roll [deg]
revision	3	Processing version of data
ontime	15030.0	Sum of GTIs [s]
livetime	13889.915717877	Livetime [s]
ontime5	15030.0	Sum of GTIs [s]
ontime7	15030.0	Sum of GTIs [s]
l2events	21548	Number of level 2 events



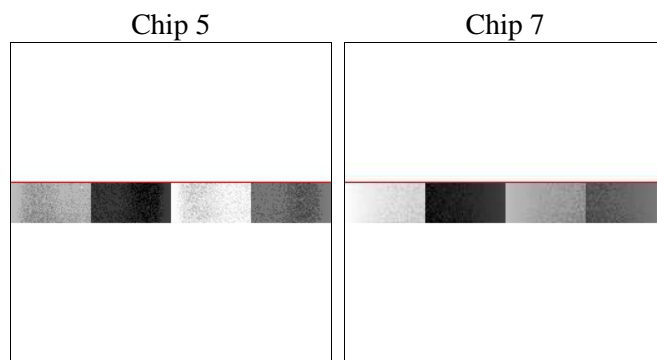
2 OBI

2.1 OBI

2.1.1 Images



2.1.2 Bias



2.1.3 Parameters

obi_num	0	Obi number	sched_exp_time	15000.000000	[s] Scheduled observation exposure time
ascdsver	8.5.1	Processing system revision	ontime	15030.0	Sum of GTIs [s]
caldsver	4.5.5	 	ontime5	15030.0	Sum of GTIs [s]
date	2012-12-15T20:51:17	Date and time of file creation	ontime7	15030.0	Sum of GTIs [s]
revision	3	Processing version of data	l1events	72922	Number of level 1 events

2.1.4 Events

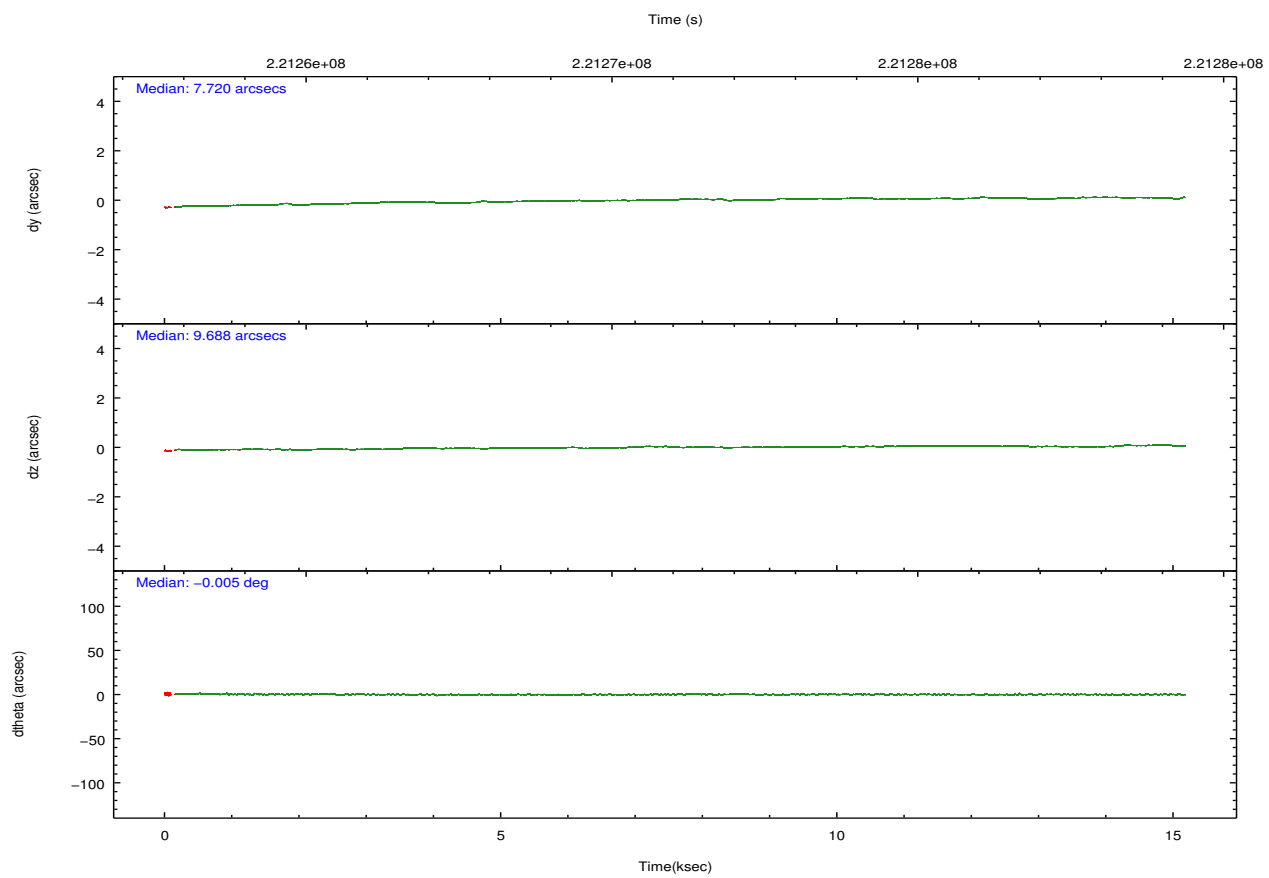
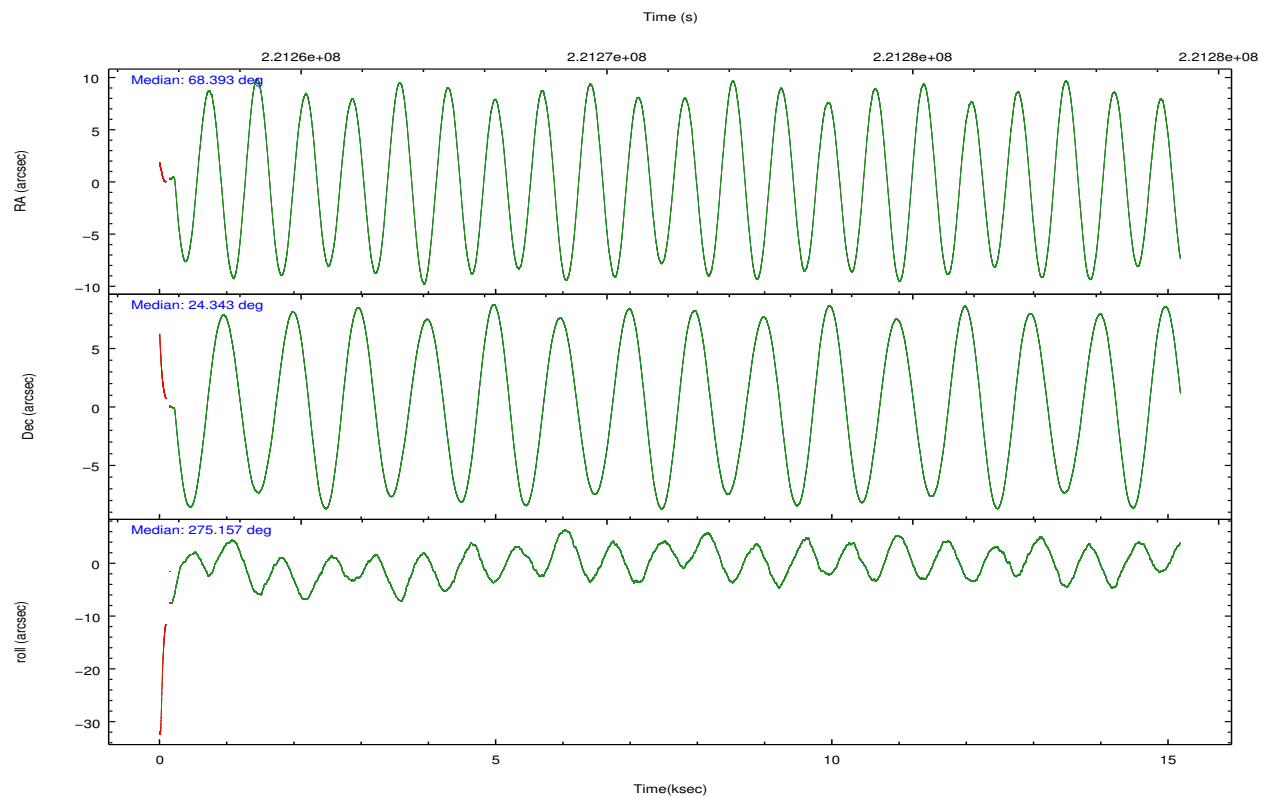
	ccd 5	ccd 7
level 1 events	48677	24245
rejected events	12991	11280
rejected %	26%	46%

	ccd 5	ccd 7
grade 0 events	27363	2167
	56%	8%
grade 1 events	59	55
	0%	0%
grade 2 events	4270	2936
	8%	12%
grade 3 events	781	1562
	1%	6%
grade 4 events	783	1577
	1%	6%
grade 5 events	1708	1873
	3%	7%
grade 6 events	4667	5242
	9%	21%
grade 7 events	9046	8833
	18%	36%

2.2 Compared Parameters

Parameter	Planned	Actual	Parameter	Planned	Actual
Instrument	ACIS	ACIS	Obspar format version number	7	7
Detector	ACIS-57	ACIS-57	Obspar file type	PREDICTED	ACTUAL
Grating	NONE	NONE	Obspar update status	NONE	UPDATED
Data mode	FAINT	FAINT	Number of optional ACIS chips dropped	0	0
Observation mode	POINTING	POINTING	On-chip summing requested	N	N
[deg] Pointing RA	68.375293	68.3928454291291	Subarray requested	CUSTOM	1/8
[deg] Pointing Dec	24.364910	24.34285997707818	Subarray start row	449	449
[deg] Pointing Roll	275.006575	275.1559435001581	Subarray row count	128	128
[mm] SIM focus pos	-0.684267	-0.6828225247311905	Alternating exposures requested	N	N
[mm] SIM defocus	0	0.001444936568705701	[s] Primary exposure time	0.000000	0.5
[mm] SIM translation stage pos	-190.132523	-190.1425803651734			
[mm] SIM translation stage offset	0	0.01005778216563158			
[s] Observation start time (MET)	221263626.184000	221262582.71473			
Observation start date	2005-01-04T22:06:02	2005-01-04T21:49:42			
[s] Observation end time (MET)	221278626.184000	221279076.50297			
Observation end date	2005-01-05T02:16:02	2005-01-05T02:24:36			
Read mode	TIMED	TIMED			

2.3 Aspect

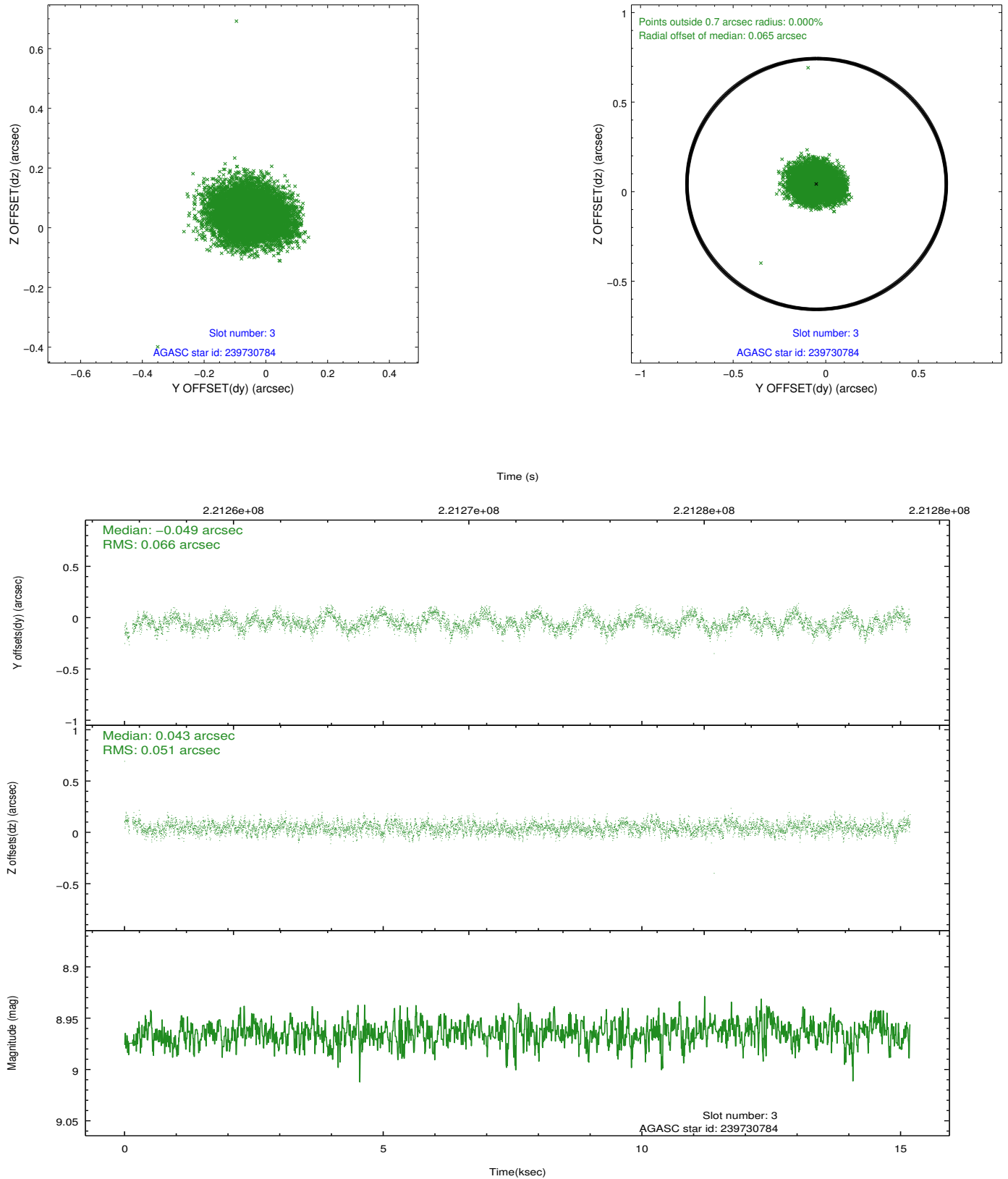


Slot Statistics

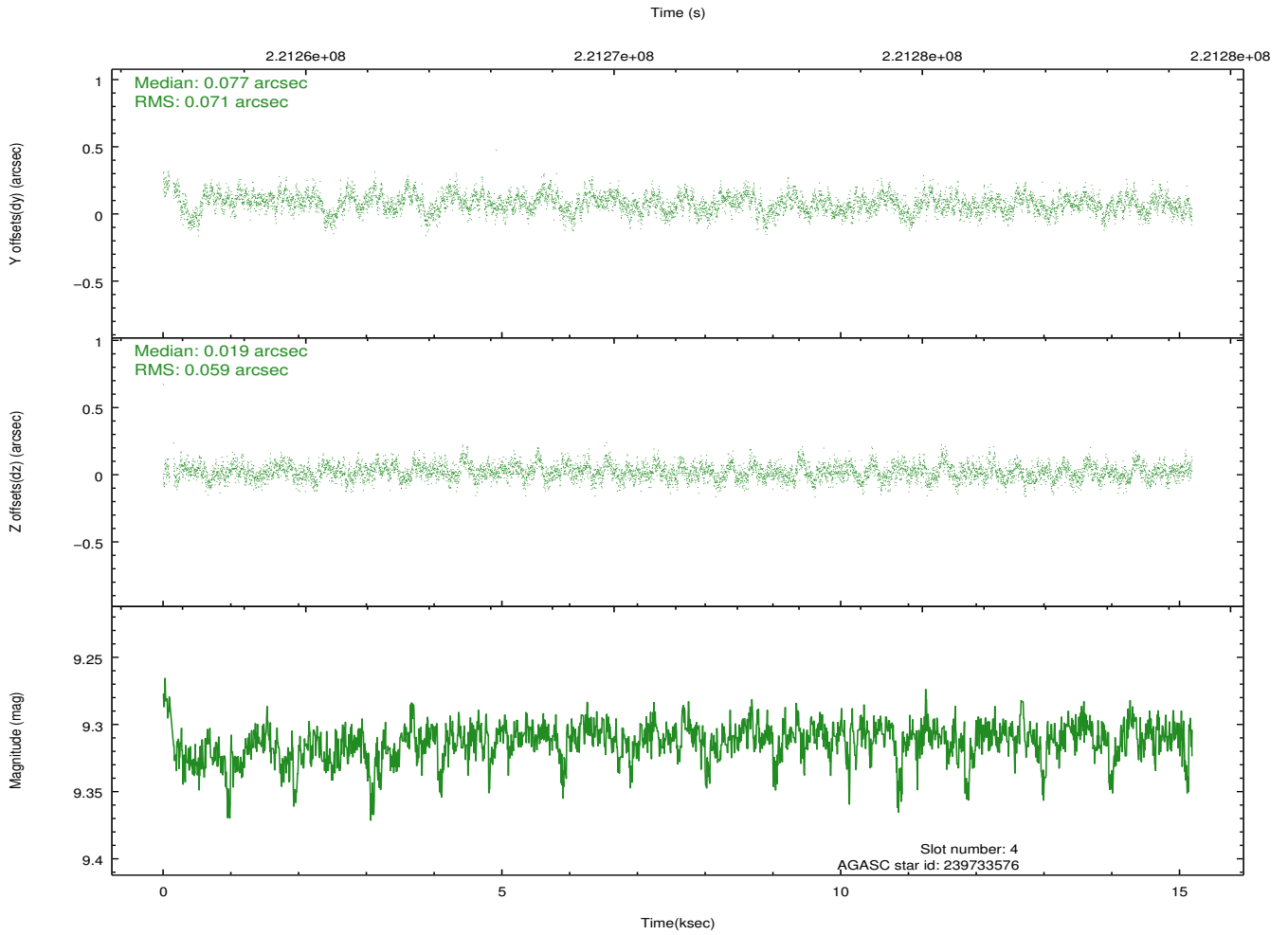
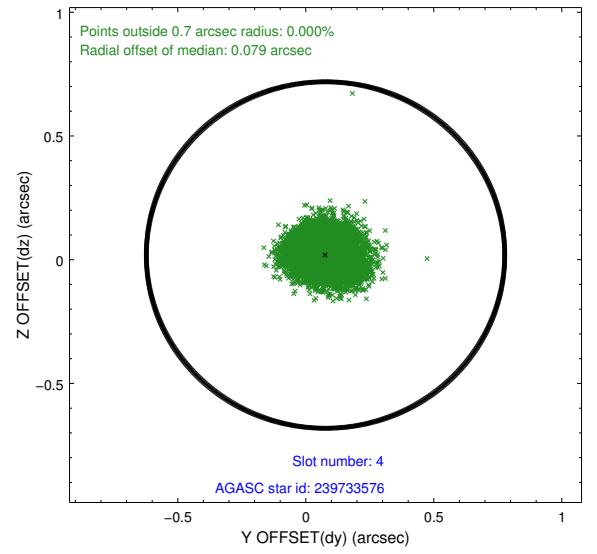
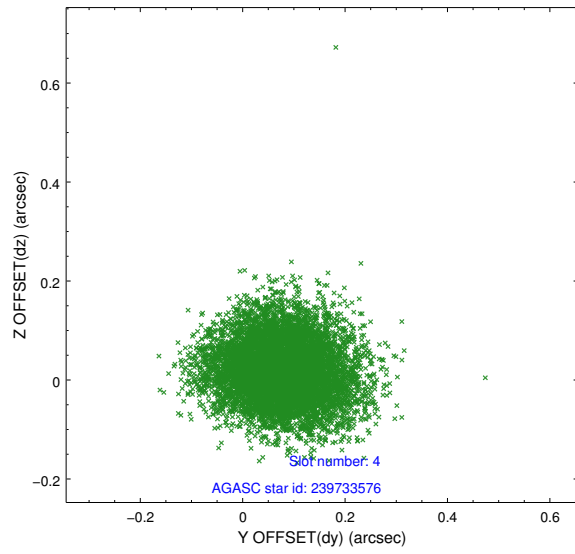
	status	id	mag	n_pts	med_dy	med_dz	drl
	FID	ACIS-S-2	7.10	3690	-0.037	-0.031	0.012
	FID	ACIS-S-4	7.21	3690	0.096	0.026	0.012
	FID	ACIS-S-5	7.24	3690	-0.091	0.014	0.011
	GUIDE	239730784	8.96	7376	-0.049	0.043	0.090
	GUIDE	239733576	9.31	7375	0.077	0.019	0.098
	GUIDE	240255024	9.19	7372	0.032	-0.088	0.099
	GUIDE	240263016	8.65	7375	-0.061	0.026	0.067
0.0000.0000.0000.0000000.00000000.000.00							

2.4 Star Slots

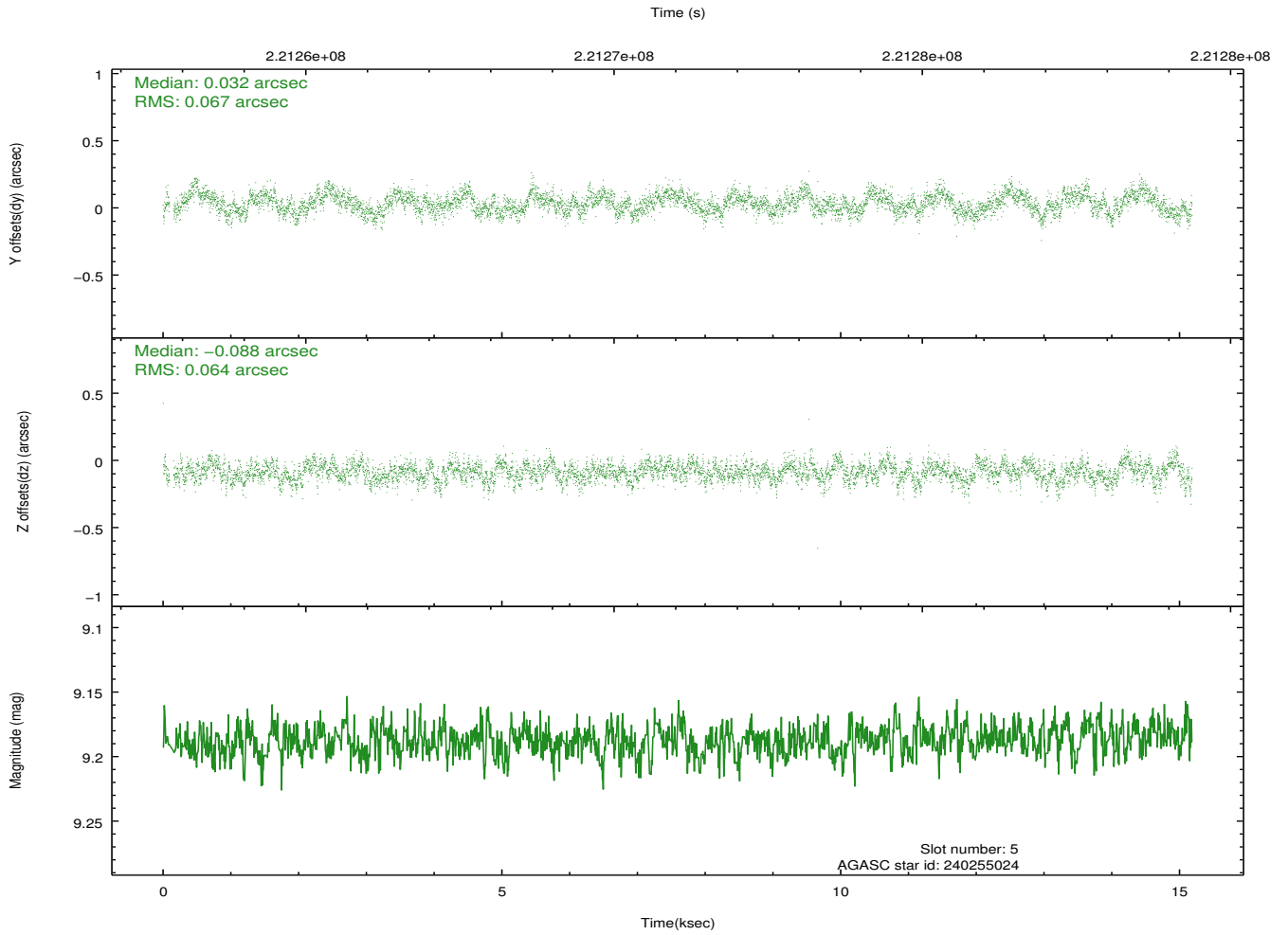
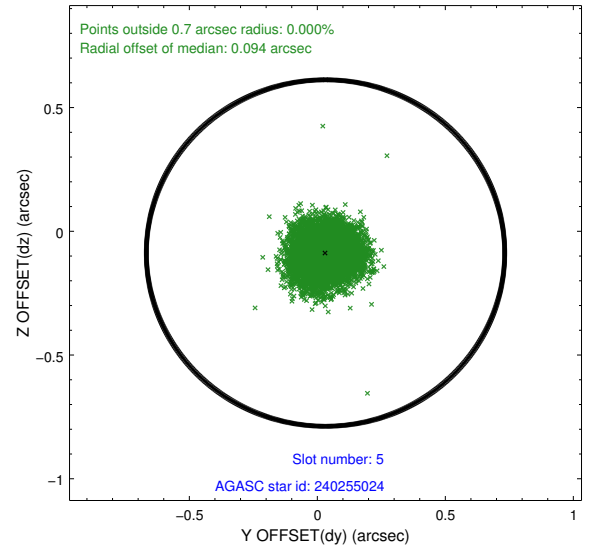
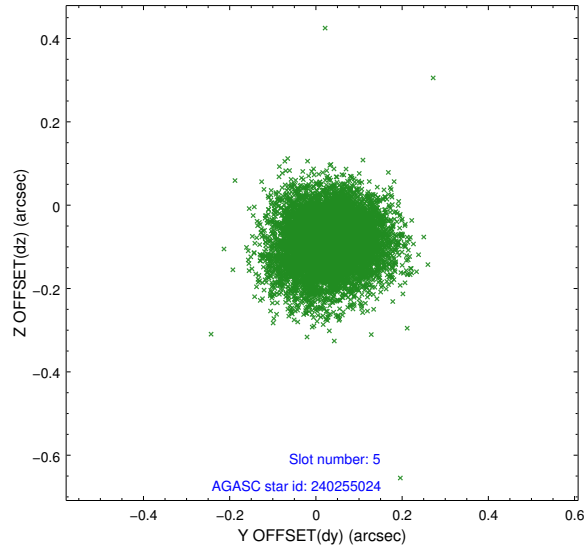
2.4.1 Slot 3



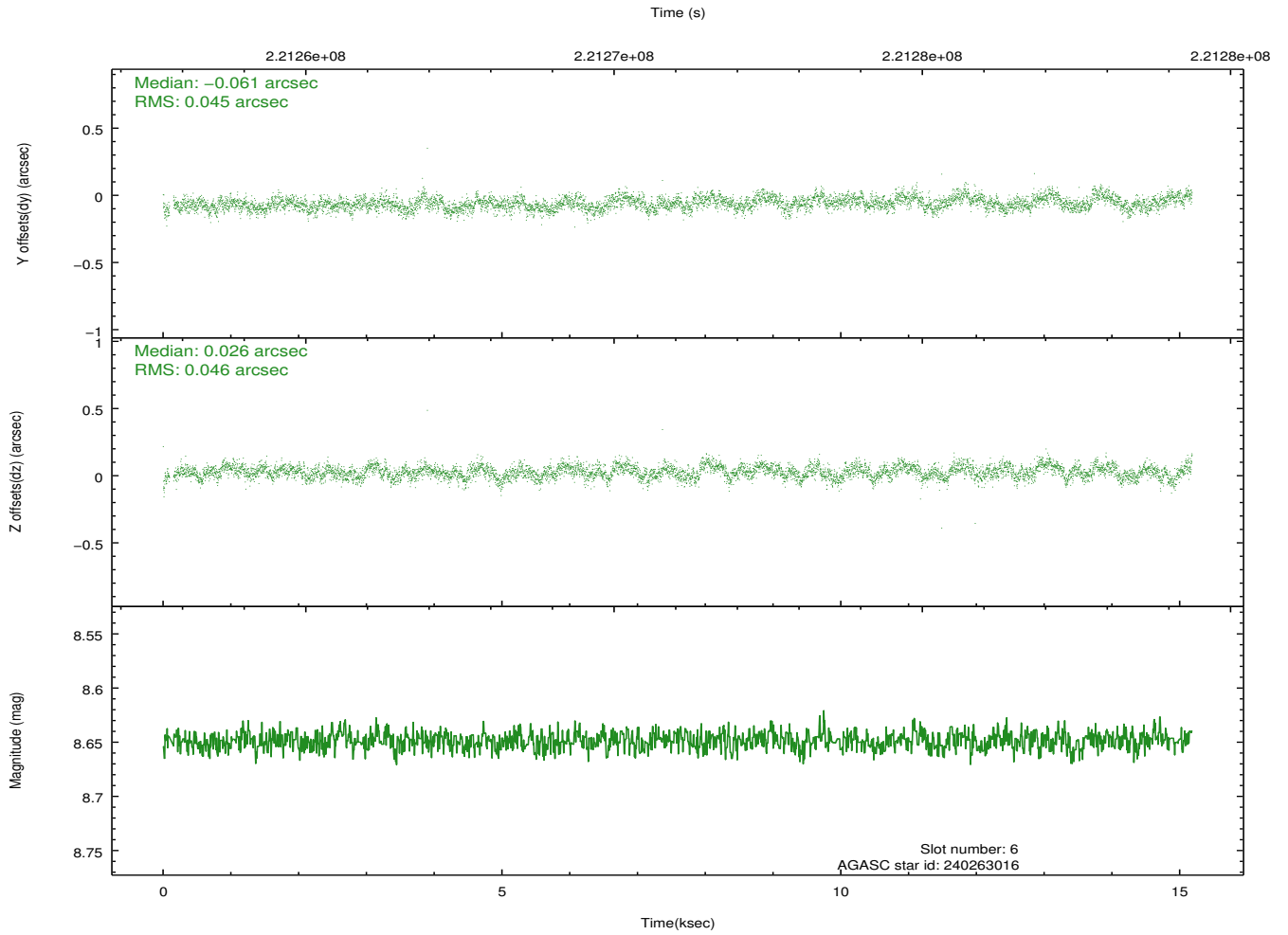
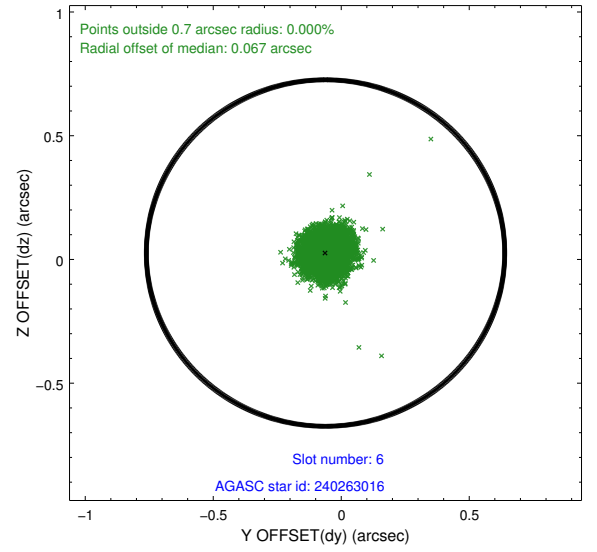
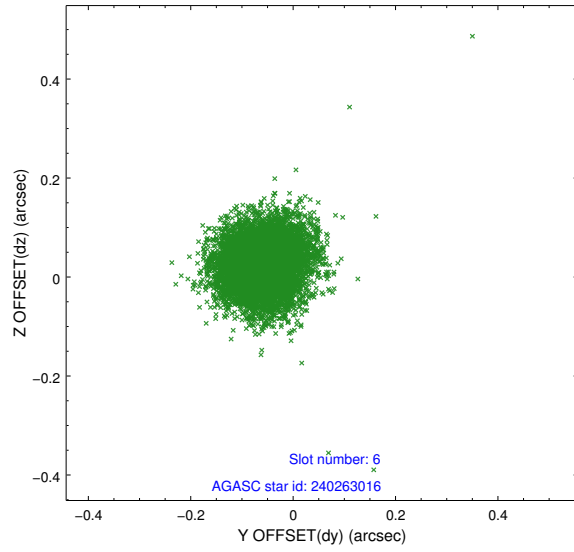
2.4.2 Slot 4



2.4.3 Slot 5

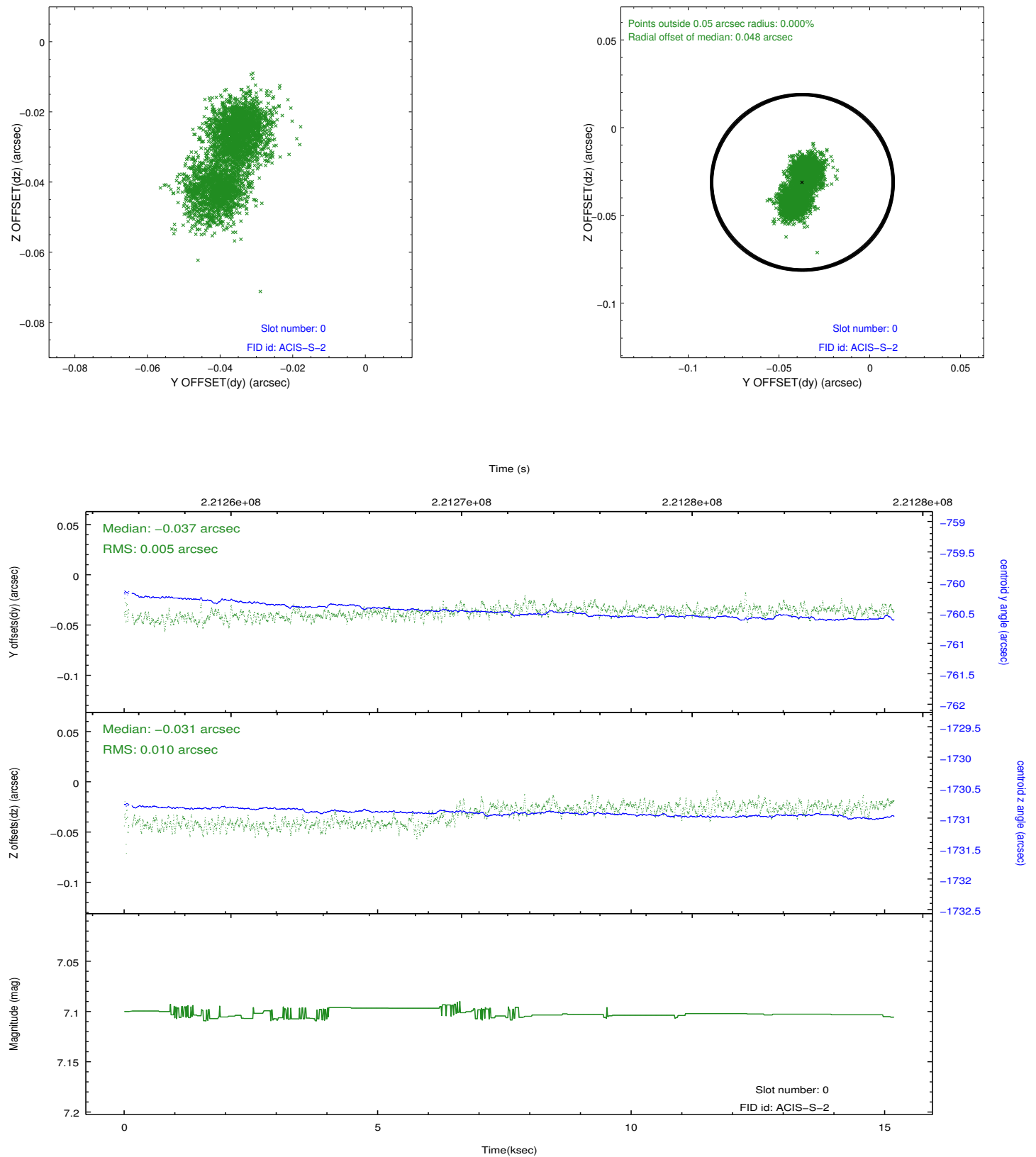


2.4.4 Slot 6

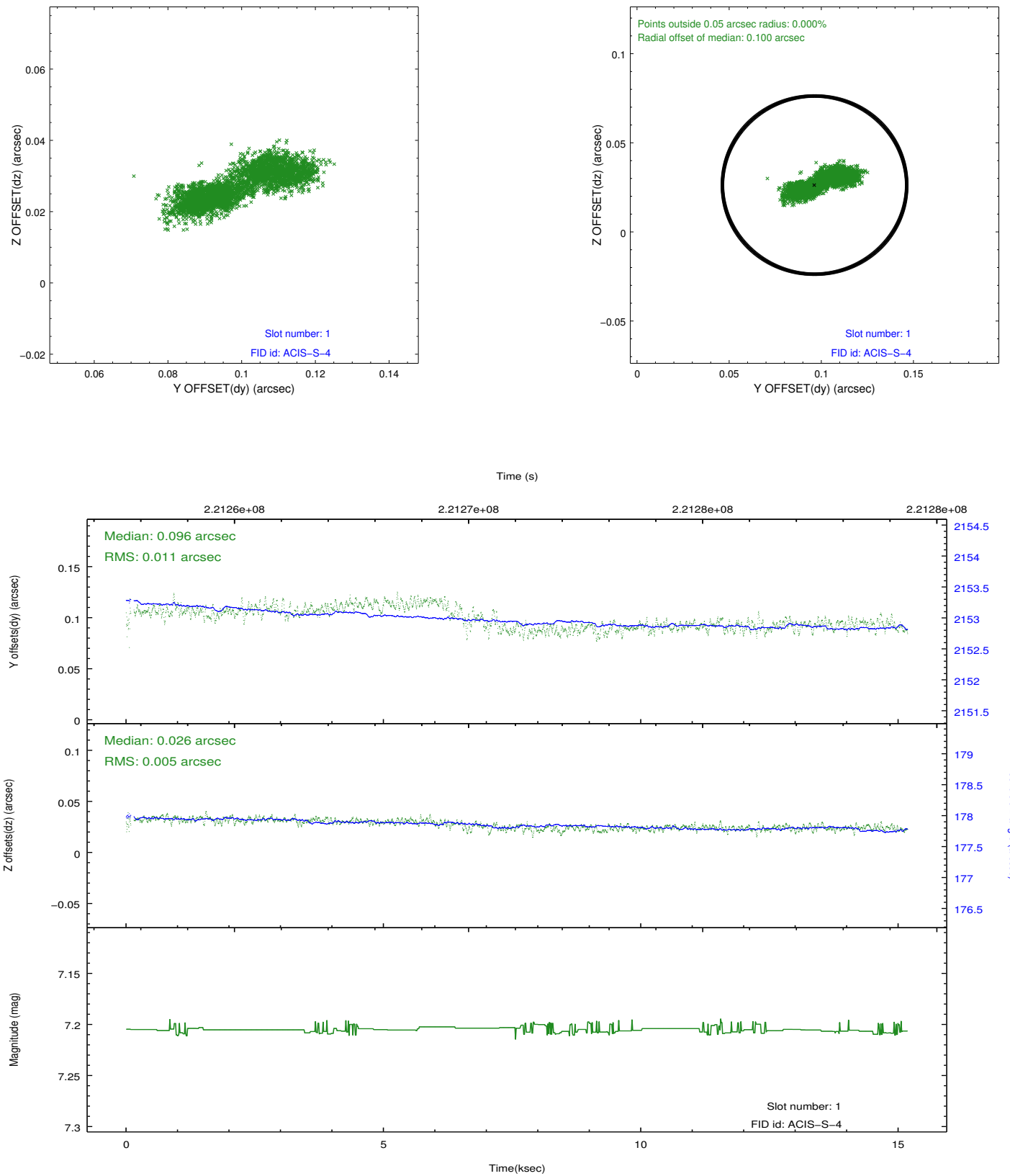


2.5 FID Slots

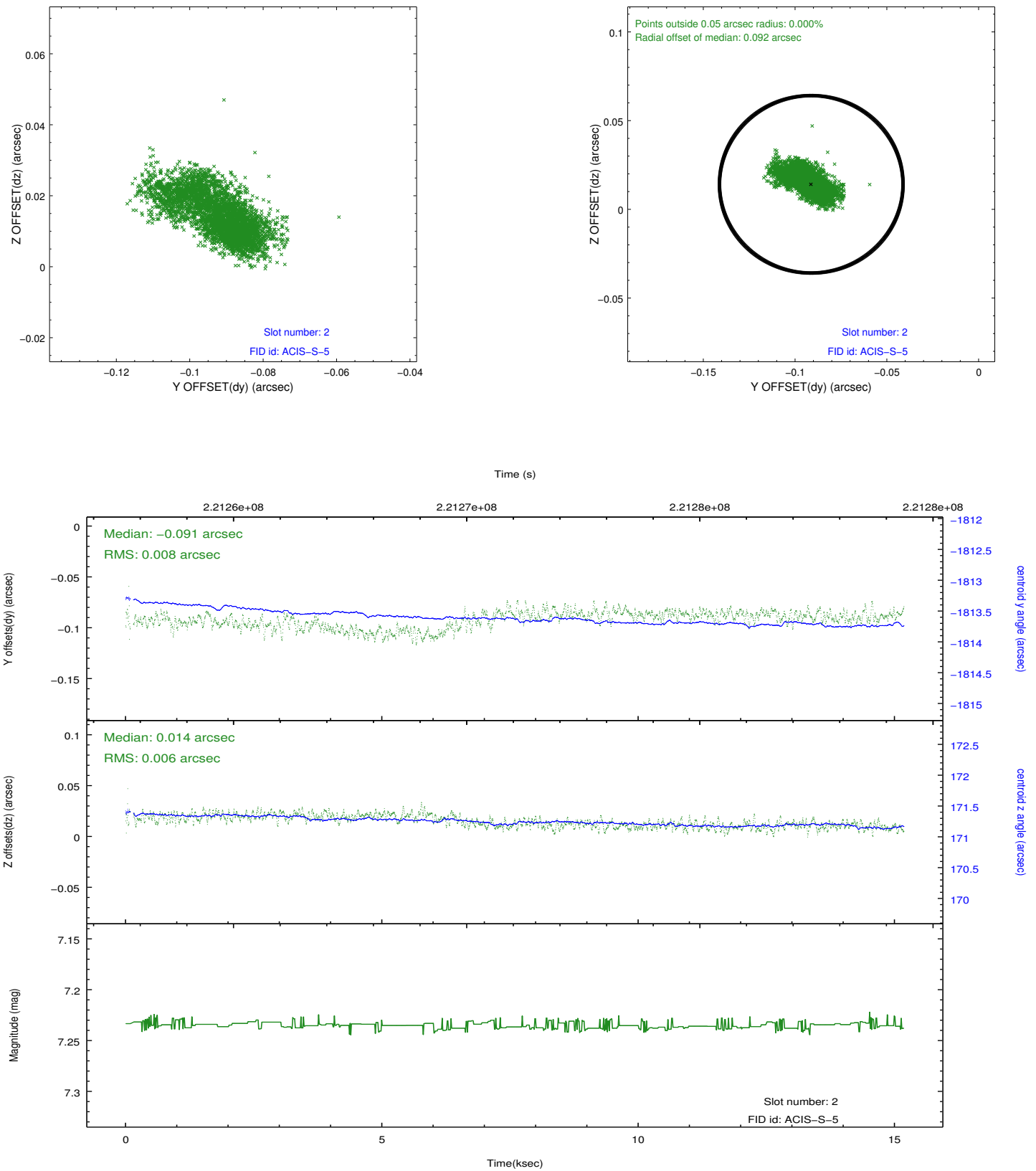
2.5.1 Slot 0



2.5.2 Slot 1



2.5.3 Slot 2



A Summary

A.1 Status

V&V Scientist	Beth Sundheim
V&V Date (YYYY-MM-DD)	2013.01.09
V&V Edition	1
V&V Disposition and Status	OK
V&V Charge Time	15.03

A.2 Comments