

V&V Reference Report

L2 ASCDS Version : 8.5.1.1

Observation 5413 - L2 Version 4
Chandra X-Ray Center

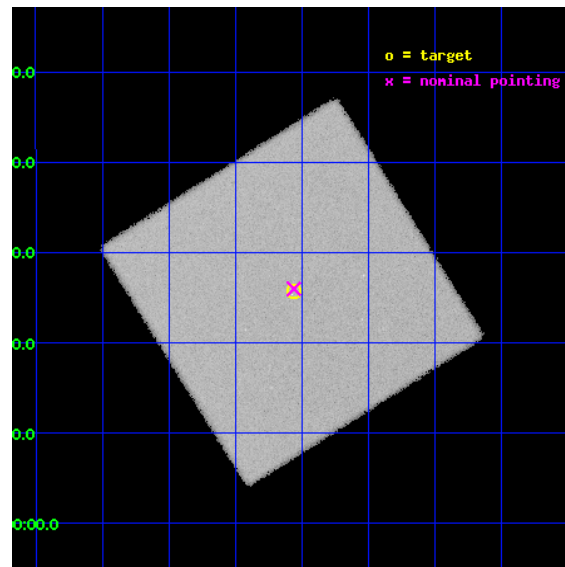
L2 Processing Date : Dec 21 2012

Contents

1	Front	2
2	OBI	3
2.1	OBI	3
2.1.1	Images	3
2.1.2	Parameters	4
2.1.3	Events	4
2.2	Compared Parameters	5
2.3	Aspect	6
2.4	Star Slots	9
2.4.1	Slot 3	9
2.4.2	Slot 4	10
2.4.3	Slot 5	11
2.4.4	Slot 6	12
2.4.5	Slot 7	13
2.5	FID Slots	14
2.5.1	Slot 0	14
2.5.2	Slot 1	15
2.5.3	Slot 2	16
A	Summary	17
A.1	Status	17
A.2	Comments	17

1 Front

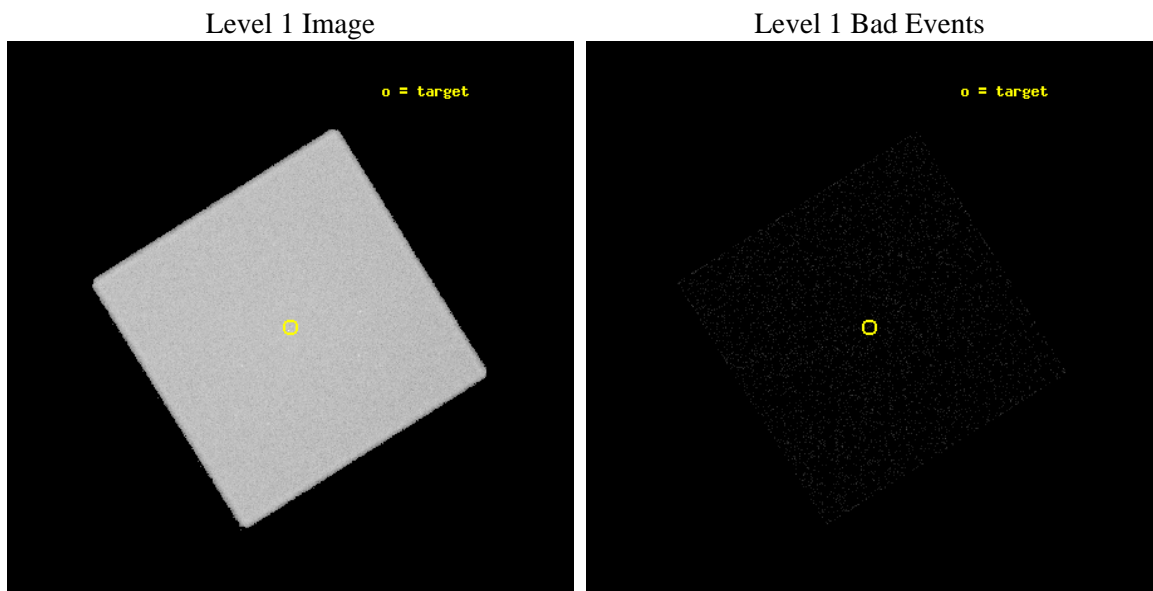
seq_num	200346	Sequence number
obs_id	5413	Observation id
title	Resolving the Puzzle of Hybrid Star Coronal X-rays	Proposal title
observer	Dr. Thomas Ayres	Principal investigator
object	HD 204867	Source name
ra_targ	322.889583	Observer's specified target RA [deg]
dec_targ	-5.571167	Observer's specified target Dec [deg]
ra_nom	322.89028623281	Nominal RA [deg]
dec_nom	-5.5671397237605	Nominal Dec [deg]
roll_nom	102.96366906585	Nominal Roll [deg]
revision	4	Processing version of data
ontime	20146.632165641	[s]
livetime	20007.37531067	Ontime multiplied by DTCOR
l2events	734623	Number of level 2 events



2 OBI

2.1 OBI

2.1.1 Images



2.1.2 Parameters

obi_num	1	Obi number	sched_exp_time	20000.000000	[s] Scheduled observation exposure time
ascdsver	8.5.1.1	Processing system revision	ontime	20146.632165641	[s]
caldsver	4.5.5	 	l1events	1186859	Number of level 1 events
date	2012-12-21T22:32:51	Date and time of file creation			
revision	4	Processing version of data			

2.1.3 Events

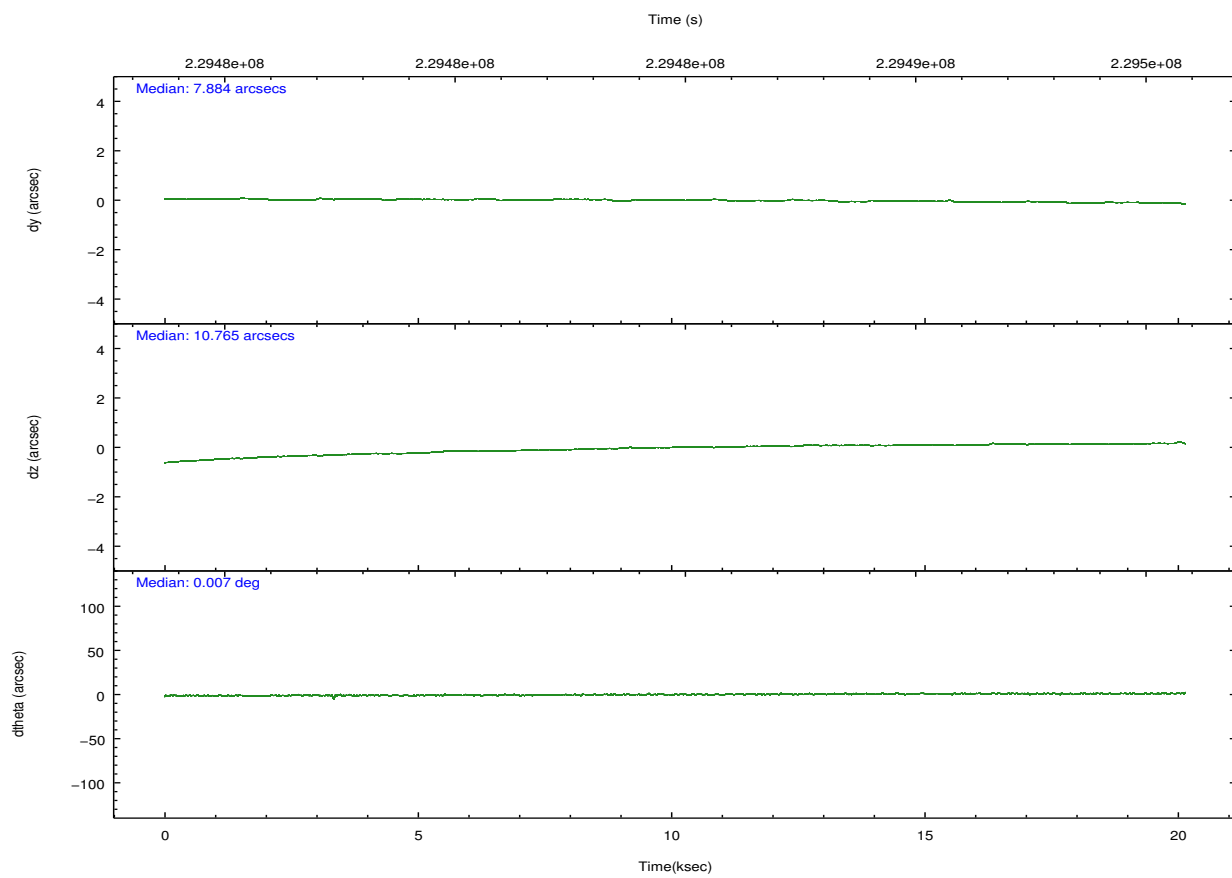
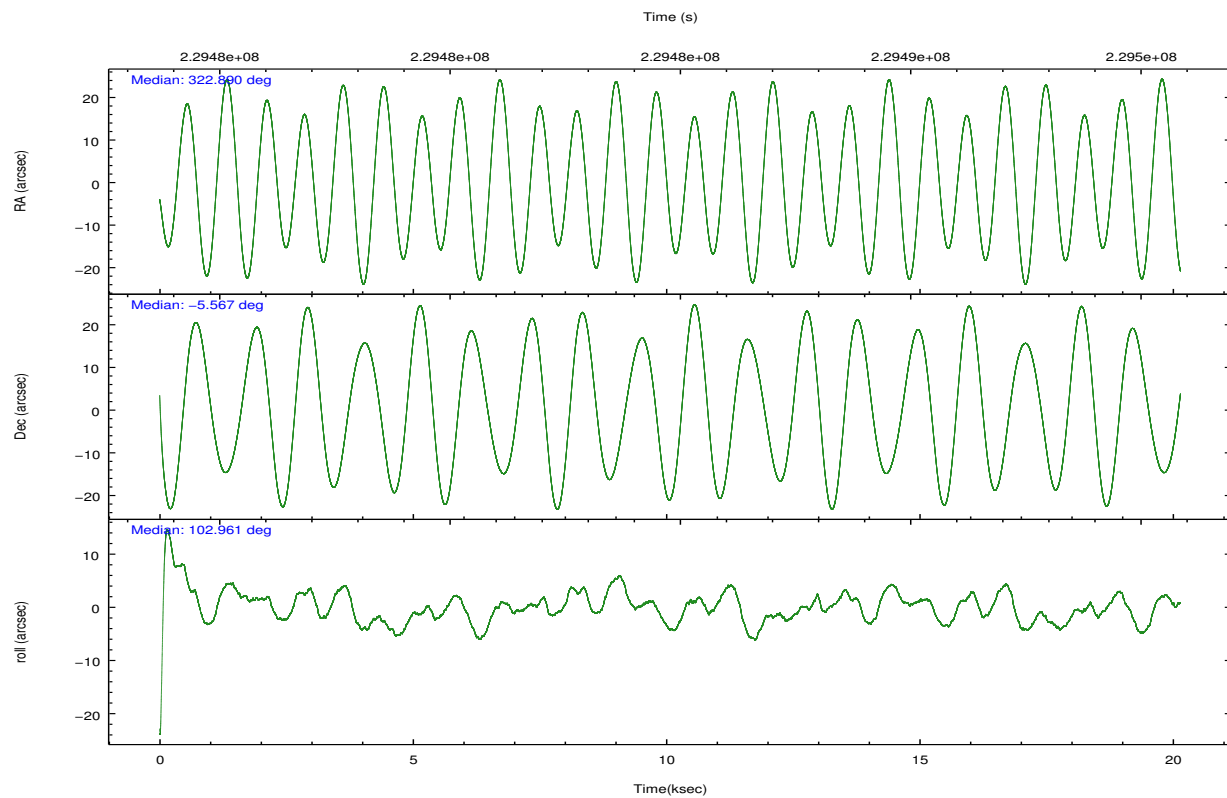
Level 1 Events

	segment 0
level 1 events	1186859
rejected events	86521
rejected %	7%

2.2 Compared Parameters

Parameter	Planned	Actual	Parameter	Planned	Actual
Instrument	HRC	HRC	Obspar format version number	7	7
Detector	HRC-I	HRC-I	Obspar file type	PREDICTED	ACTUAL
Grating	NONE	NONE	Obspar update status	NONE	UPDATED
Data mode	OBSERVING	OBSERVING			
Observation mode	POINTING	POINTING			
[deg] Pointing RA	322.909312	322.8902862328077			
[deg] Pointing Dec	-5.586460	-5.567139723760457			
[deg] Pointing Roll	103.061045	102.9636690658496			
[mm] SIM focus pos	-1.040293	-1.038866356238299			
[mm] SIM defocus	0	0.001426264420575141			
[mm] SIM translation stage pos	126.985494	126.9804656746847			
[mm] SIM translation stage offset	0	0.005023216916882234			
[s] Observation start time (MET)	229474844.184000	229473585.43639			
Observation start date	2005-04-09T22:59:40	2005-04-09T22:39:45			
[s] Observation end time (MET)	229494844.184000	229495295.44988			
Observation end date	2005-04-10T04:33:00	2005-04-10T04:41:35			

2.3 Aspect

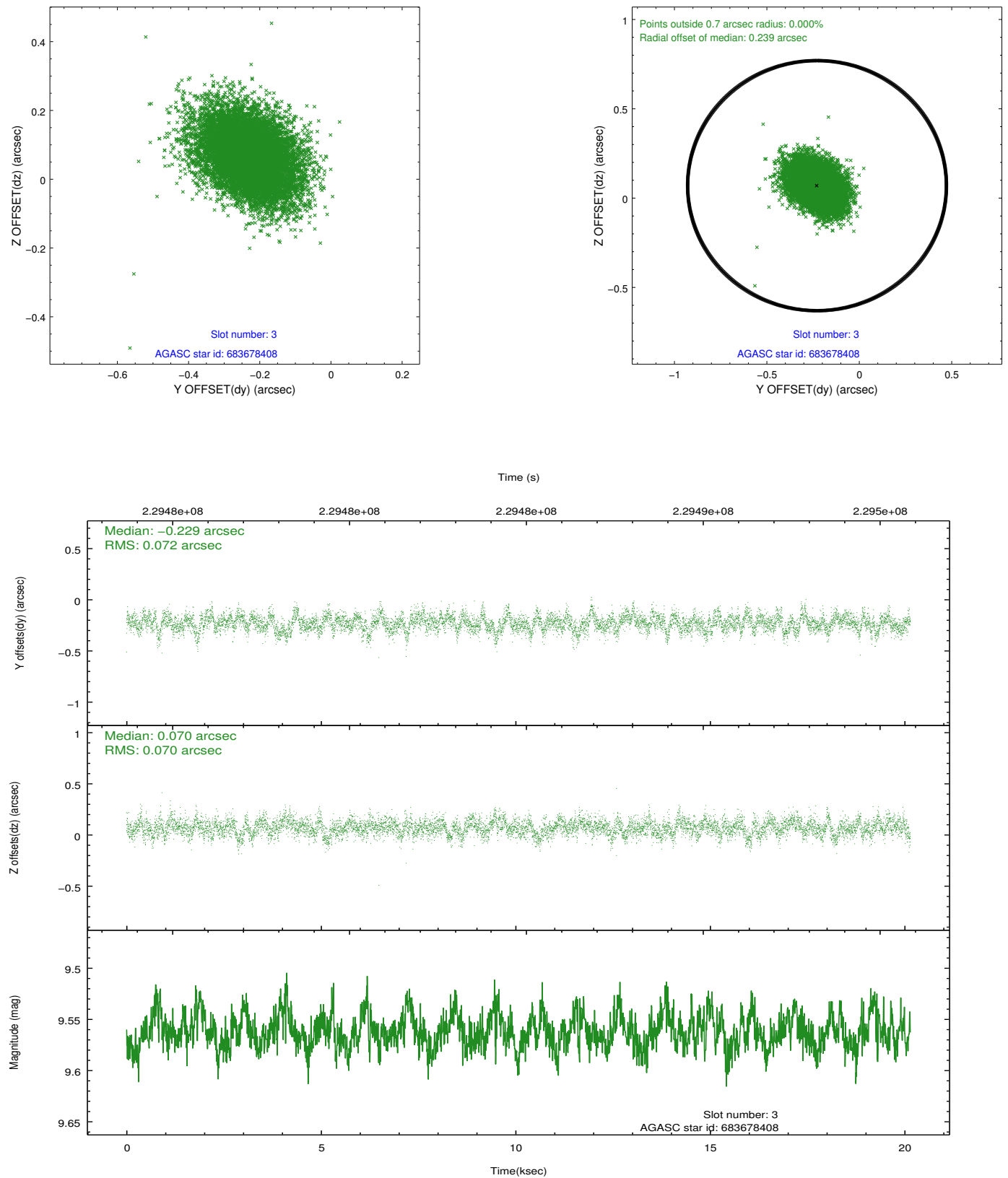


Slot Statistics

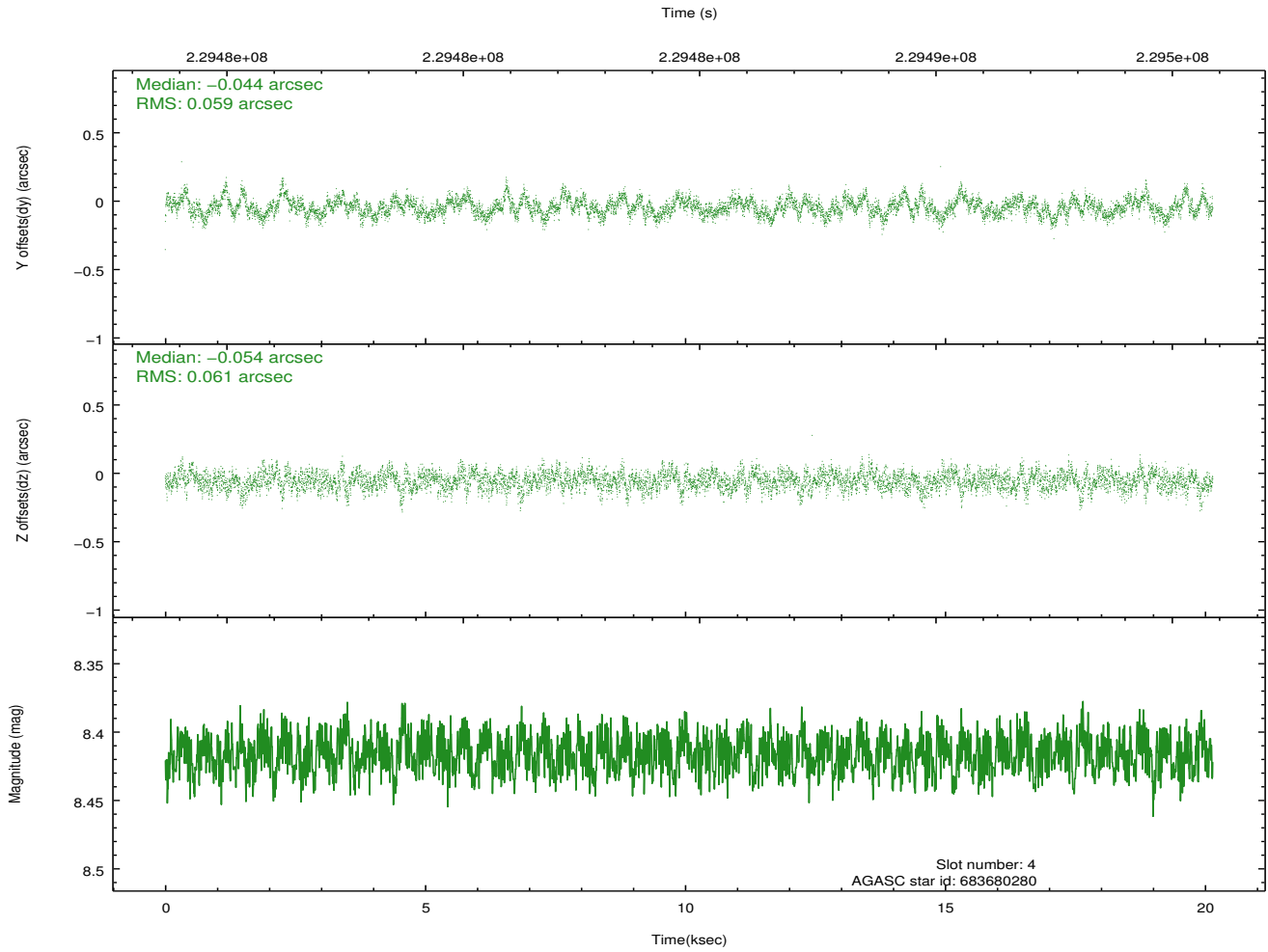
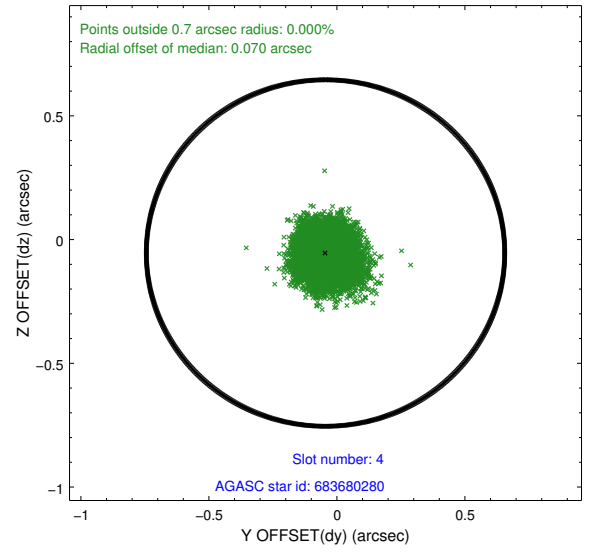
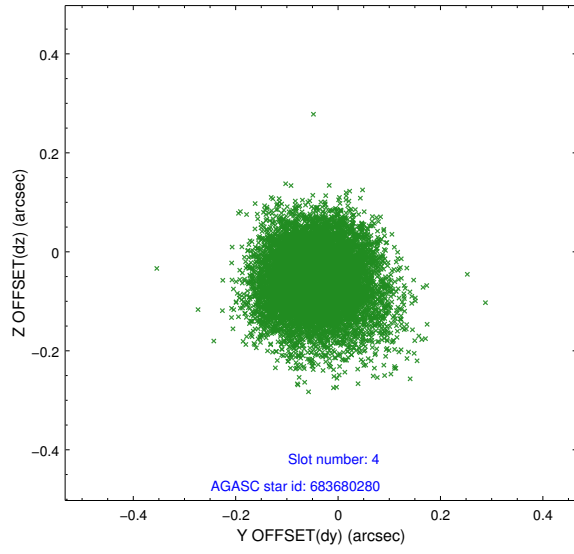
slot	status	id	mag	n_pts	med_dy	med_dz	dr1	dr2	ra	dec	mean_y	mean_z
0	FID	HRC-I-2	7.01	4914	0.045	-0.031	0.006	0.011	0.000000	0.000000	849.23	-1300.18
1	FID	HRC-I-3	7.06	4914	-0.049	-0.023	0.006	0.011	0.000000	0.000000	-1191.86	1005.66
2	FID	HRC-I-4	7.00	4914	0.122	-0.032	0.006	0.011	0.000000	0.000000	1279.17	1003.77
3	GUIDE	683678408	9.56	9824	-0.229	0.070	0.105	0.179	323.151188	-5.184055	1215.65	-1171.80
4	GUIDE	683680280	8.42	9824	-0.044	-0.054	0.089	0.146	323.474661	-5.479200	-81.67	-2060.58
5	GUIDE	683683296	8.08	9829	-0.066	0.099	0.076	0.123	323.442990	-5.418620	156.04	-1999.43
6	GUIDE	684200944	9.66	9821	0.196	-0.166	0.111	0.192	323.003491	-6.195563	-2211.27	166.75
7	GUIDE	684204648	9.29	9816	0.151	0.055	0.096	0.166	323.288806	-5.982190	-1694.59	-1001.49

2.4 Star Slots

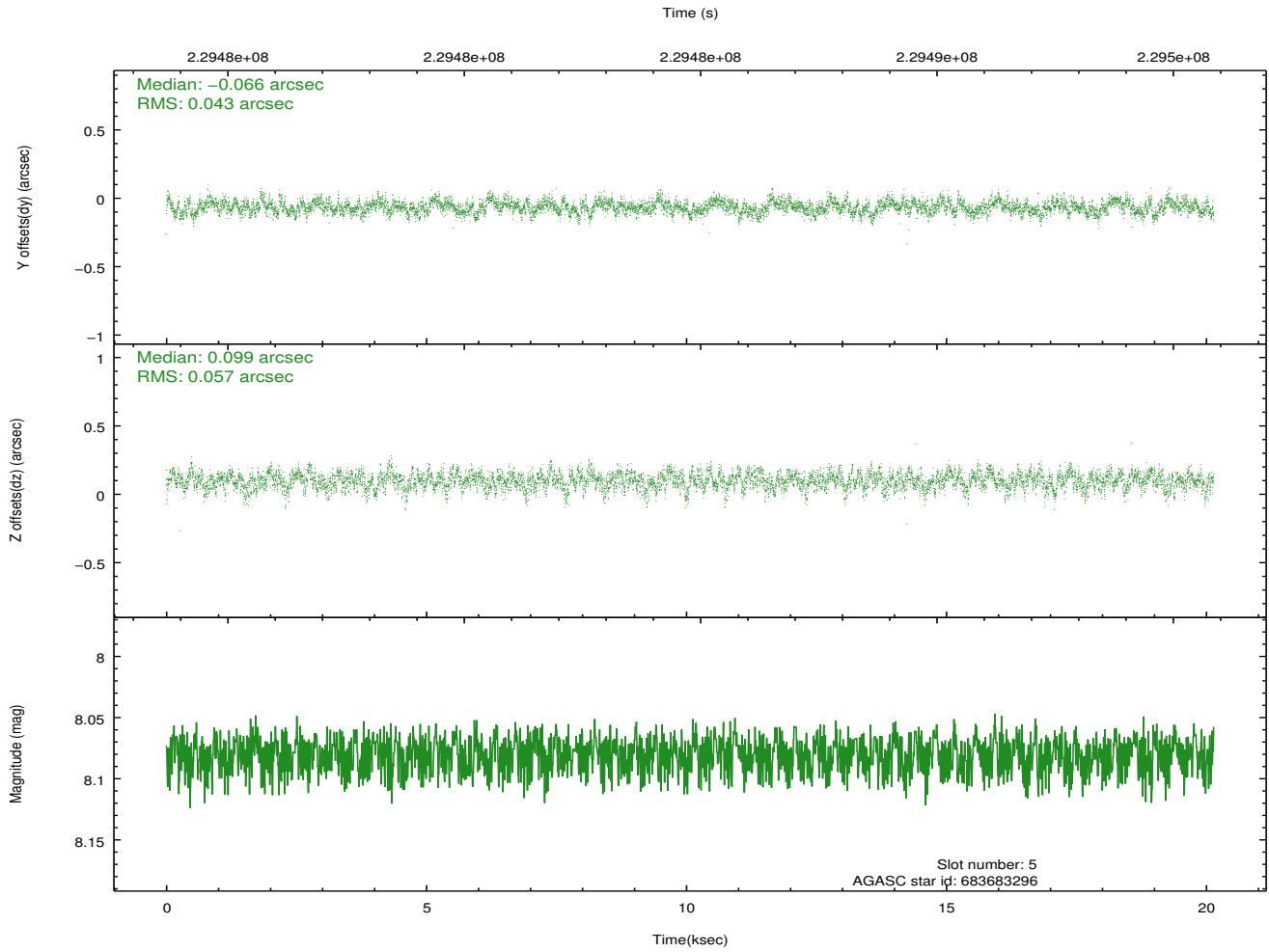
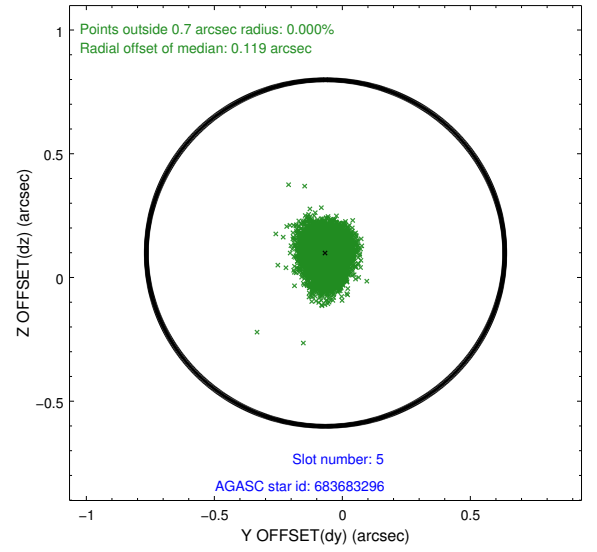
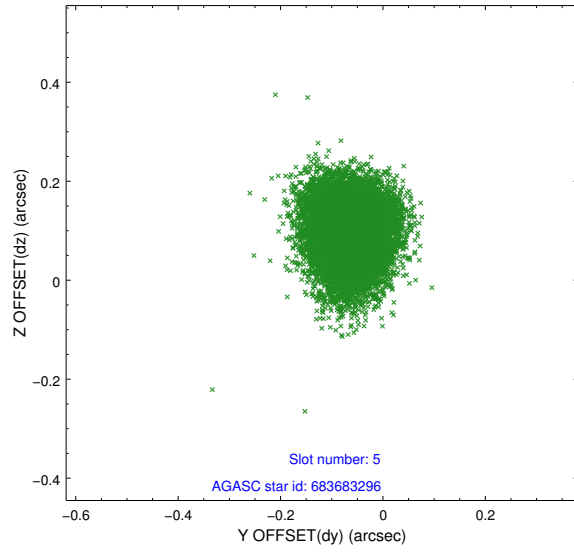
2.4.1 Slot 3



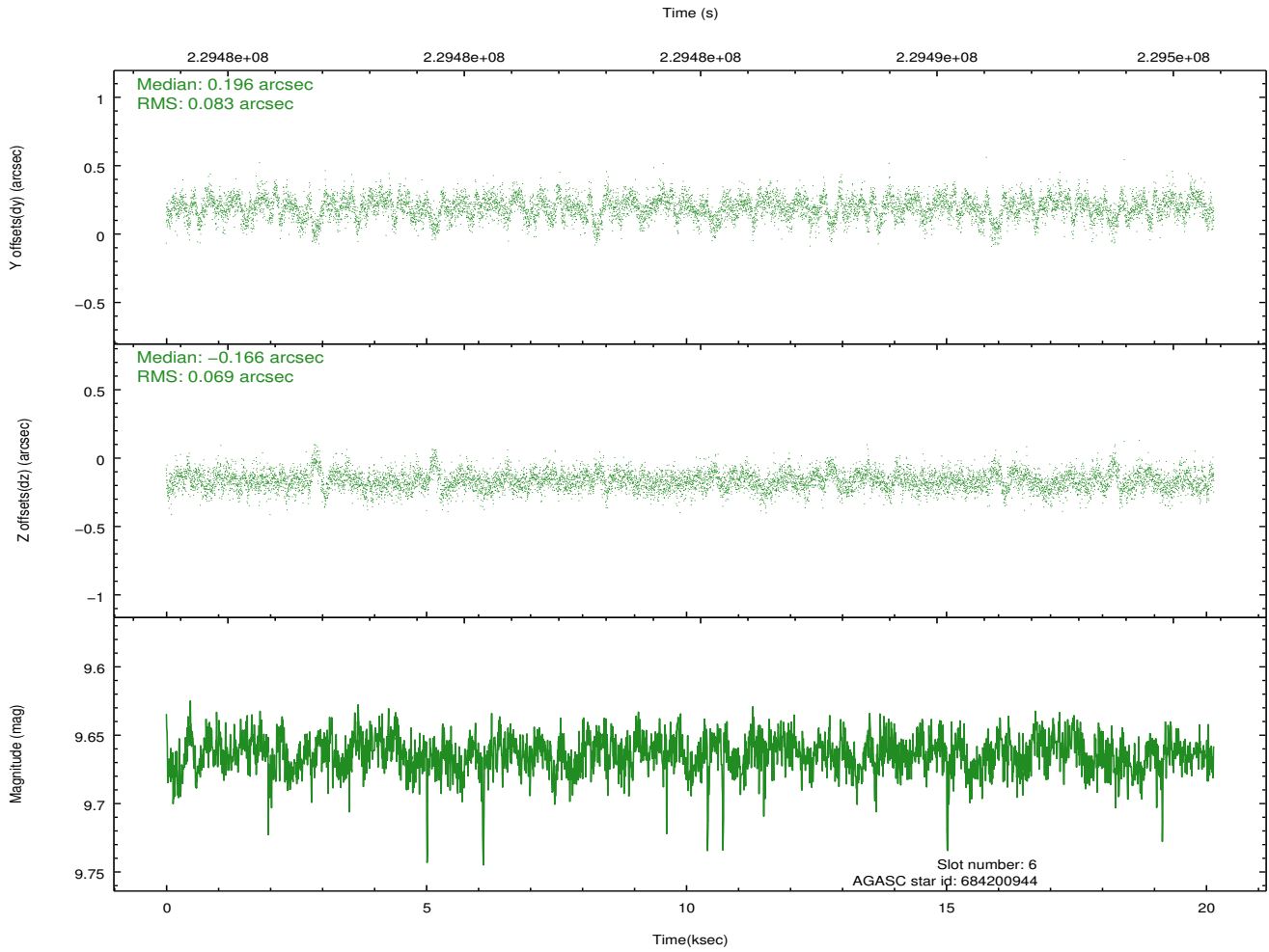
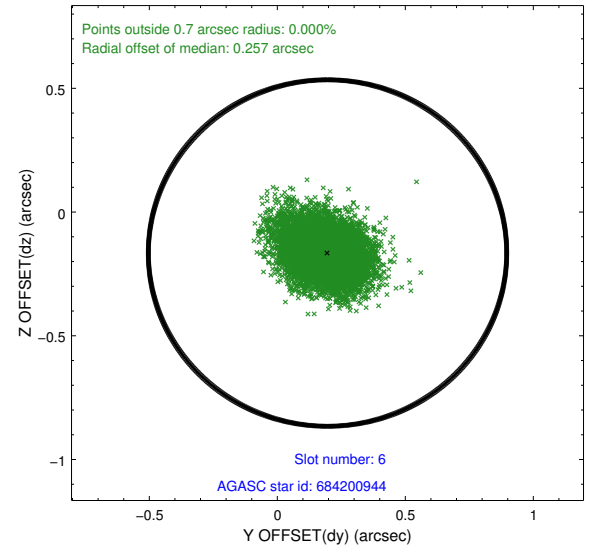
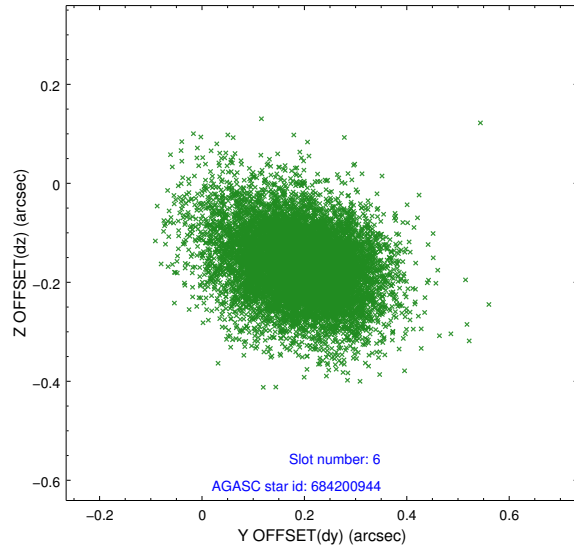
2.4.2 Slot 4



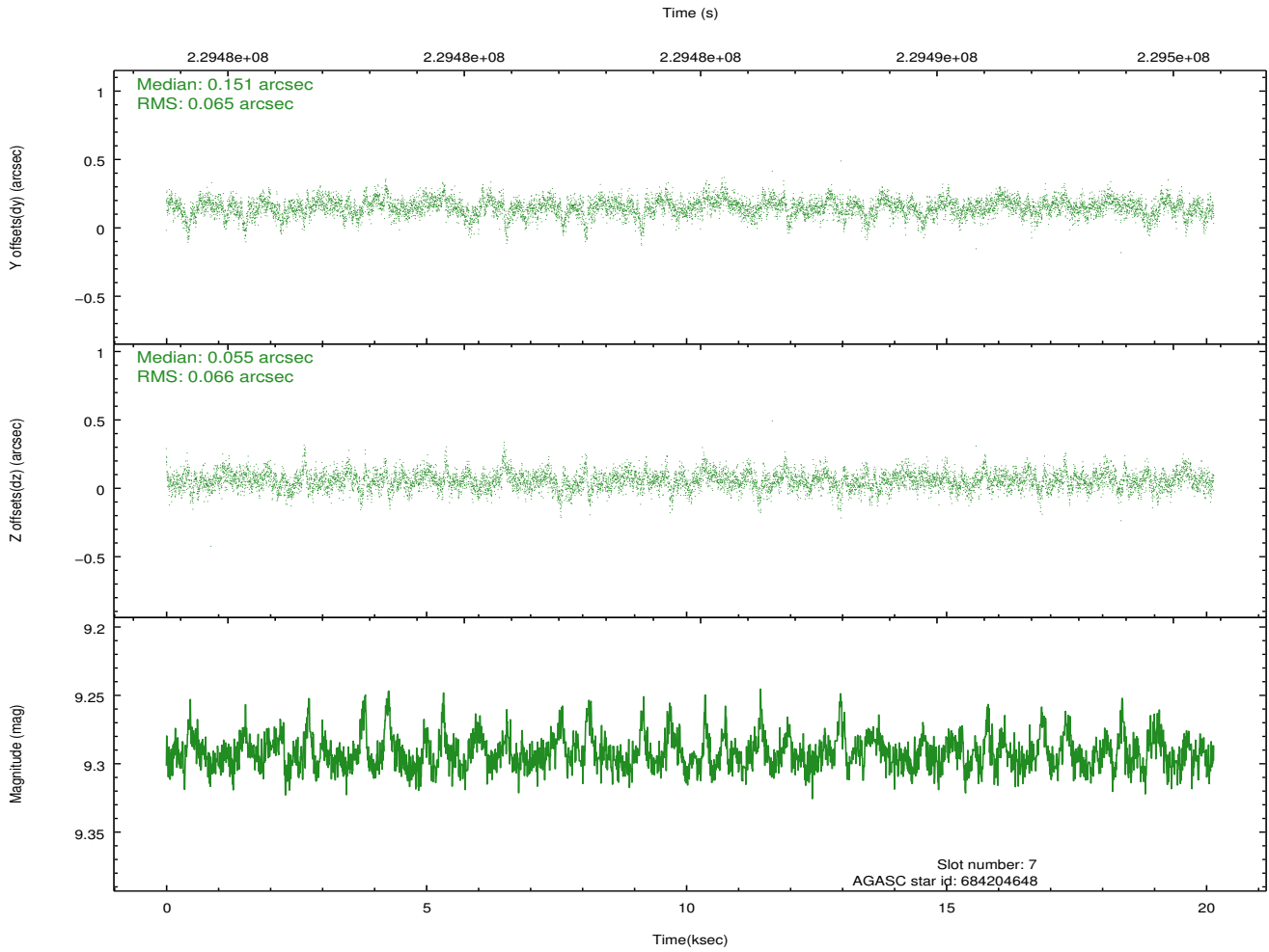
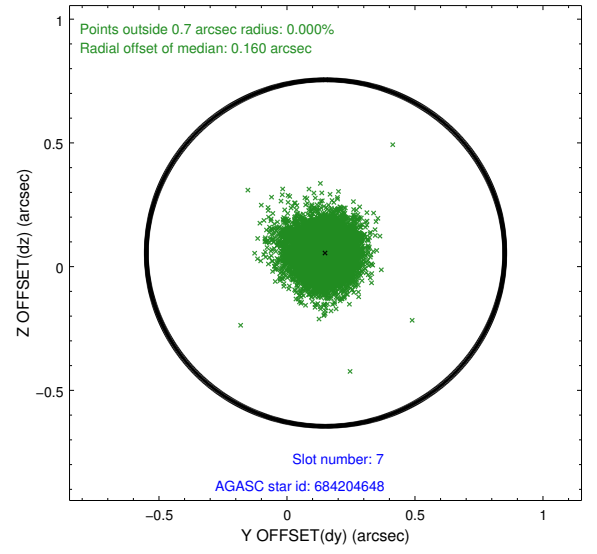
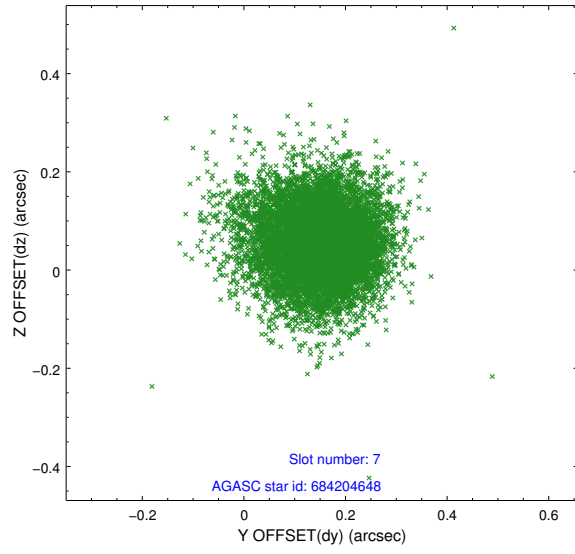
2.4.3 Slot 5



2.4.4 Slot 6

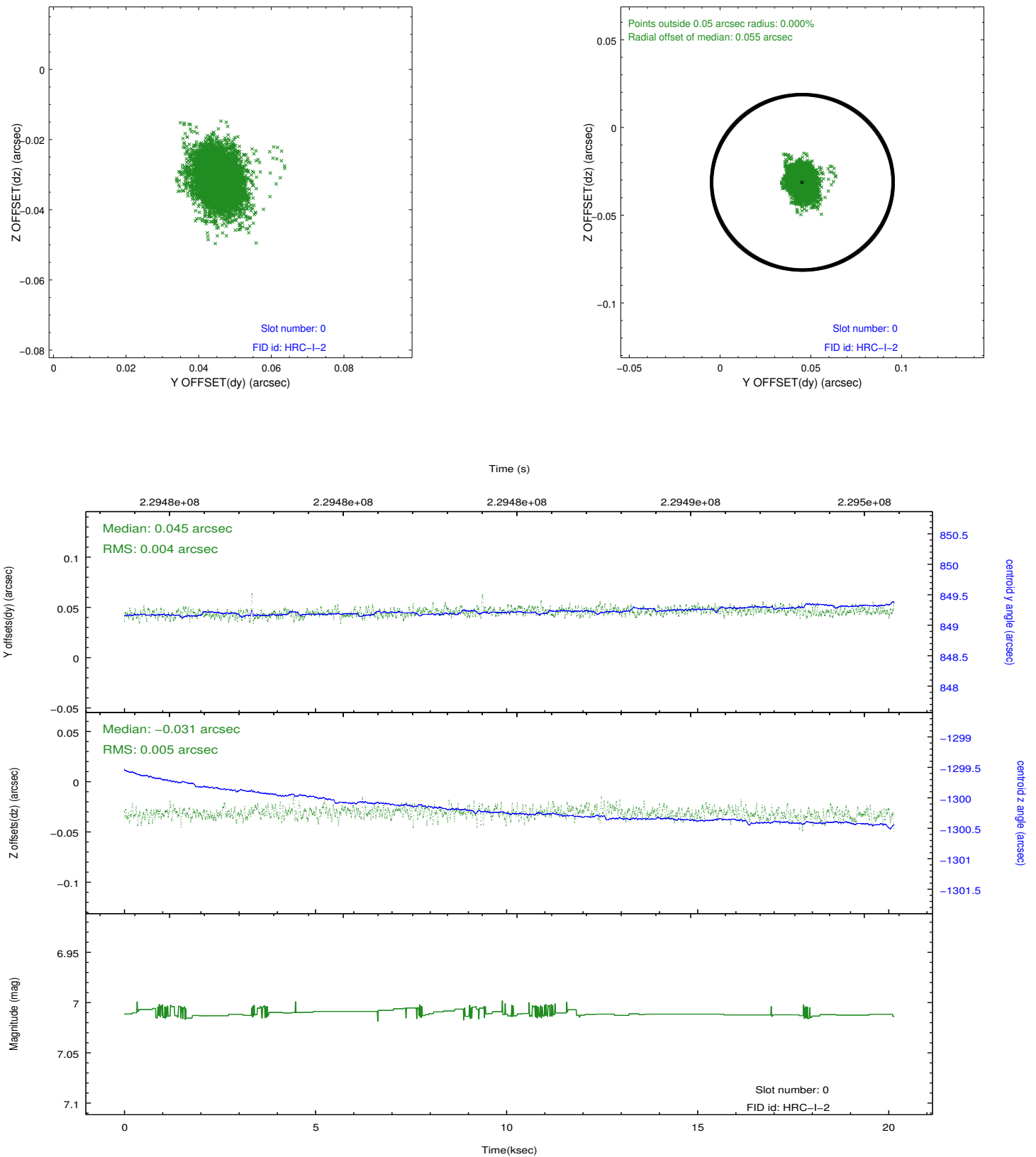


2.4.5 Slot 7

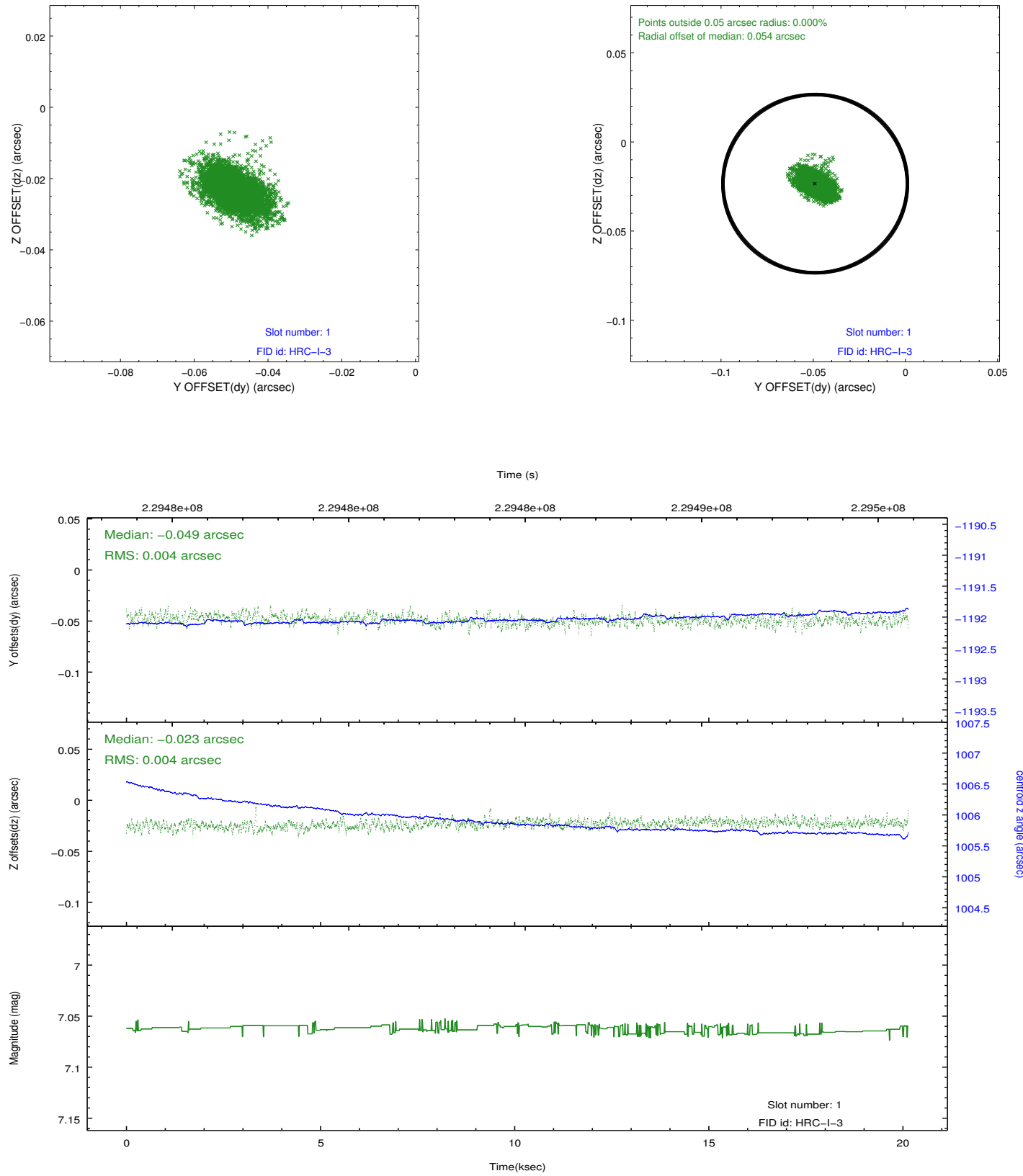


2.5 FID Slots

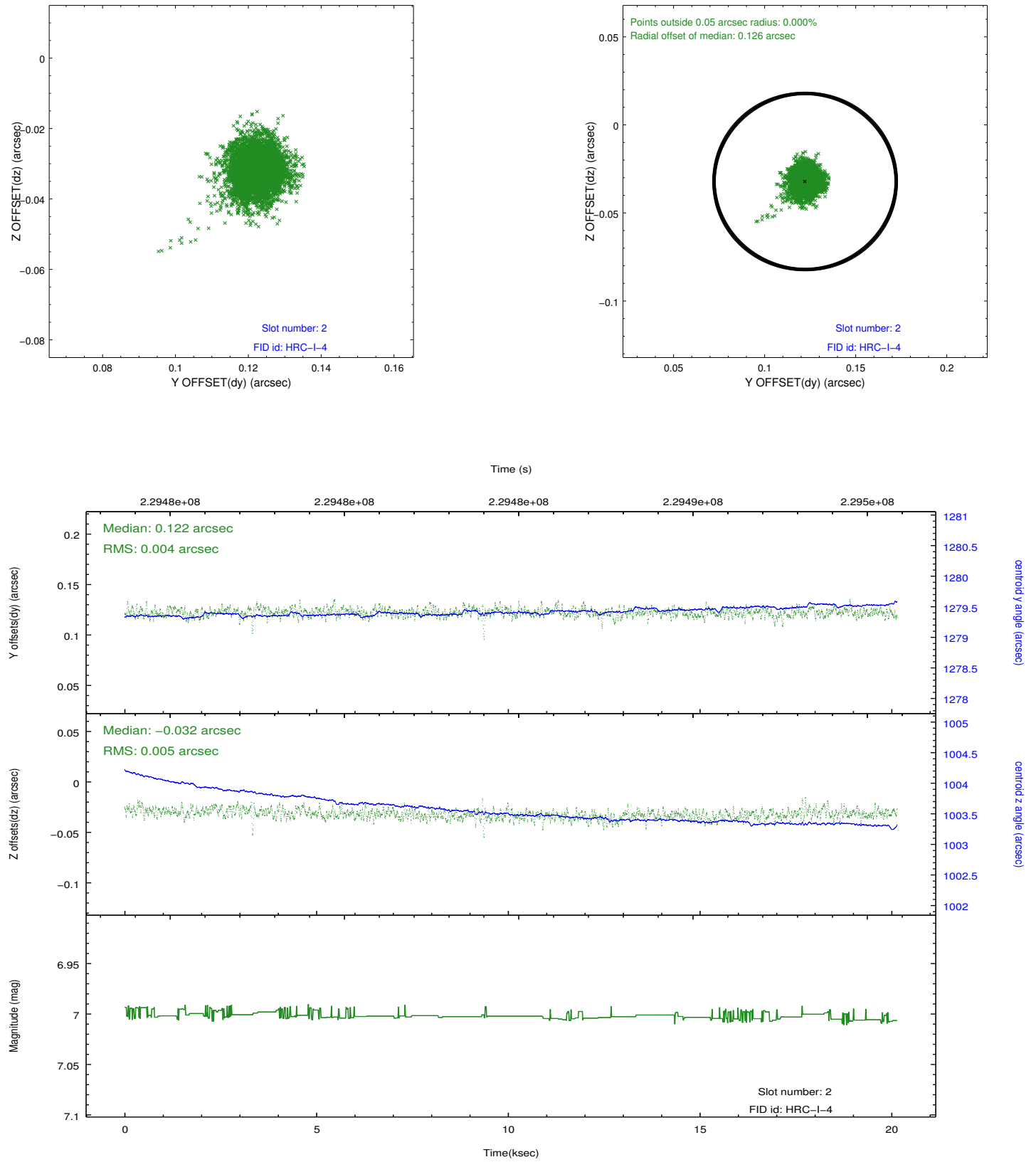
2.5.1 Slot 0



2.5.2 Slot 1



2.5.3 Slot 2



A Summary

A.1 Status

V&V Scientist	Jen Lauer
V&V Date (YYYY-MM-DD)	2013.01.14
V&V Edition	1
V&V Disposition and Status	OK
V&V Charge Time	20.14637

A.2 Comments

Joint Proposal: HST