

V&V Reference Report

L2 ASCDS Version : 7.6.7.1

Observation 5405 - L2 Version 002
Chandra X-Ray Center

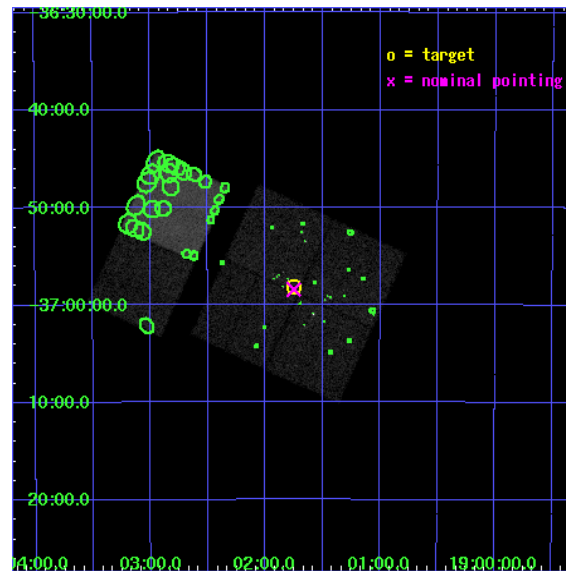
L2 Processing Date : Mar 19 2006

Contents

1	Front	2
2	OBI	3
2.1	OBI	3
2.1.1	Images	3
2.1.2	Bias	3
2.1.3	Parameters	4
2.1.4	Events	4
2.2	Compared Parameters	5
2.3	Aspect	6
2.4	Star Slots	9
2.4.1	Slot 3	9
2.4.2	Slot 4	10
2.4.3	Slot 5	11
2.4.4	Slot 6	12
2.4.5	Slot 7	13
2.5	FID Slots	14
2.5.1	Slot 0	14
2.5.2	Slot 1	15
2.5.3	Slot 2	16
3	Point Sources	17
A	Summary	18
A.1	Status	18
A.2	Comments	18

1 Front

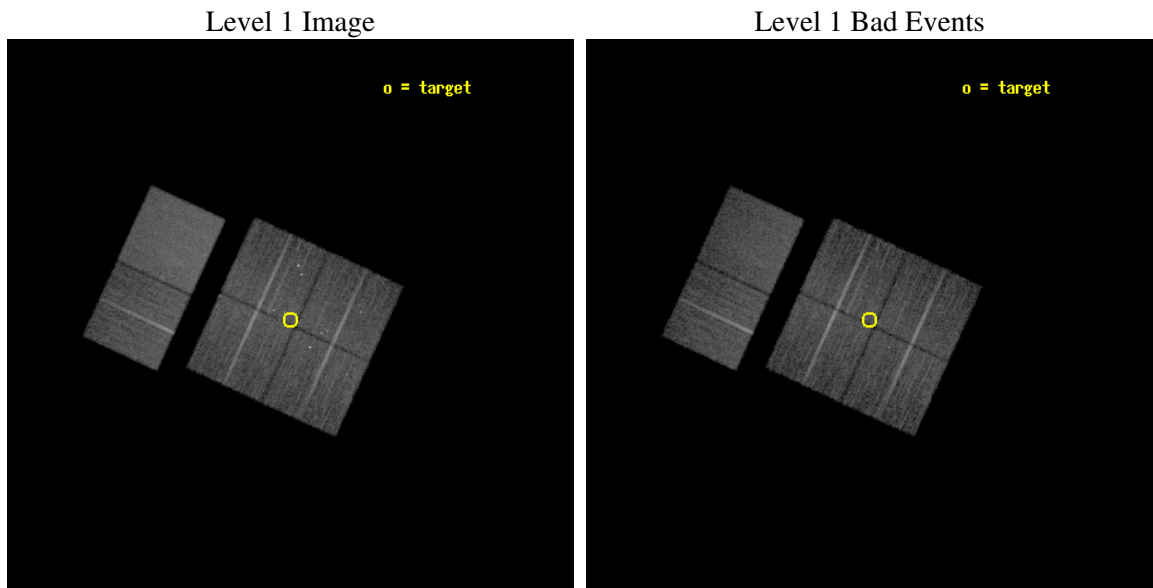
seq_num	200339
obs_id	5405
title	Simultaneous X-ray and Radio Monitoring of YSO Activity in the Coronet Cluster
observer	Jan Forbrich
object	Coronet Cluster
dtcycle	0
cycle	P
ra_targ	285.4375
dec_targ	-36.969167
ra_nom	285.4376915163
dec_nom	-36.973778928013
roll_nom	294.69012218515
revision	2
ontime	15174.399943471
livetime	14982.25255446
ontime0	15174.399943471
ontime1	15174.399943471
ontime2	15174.399943471
ontime3	15174.399943471
ontime6	15174.399943471
ontime7	15174.399943471
l2events	119690



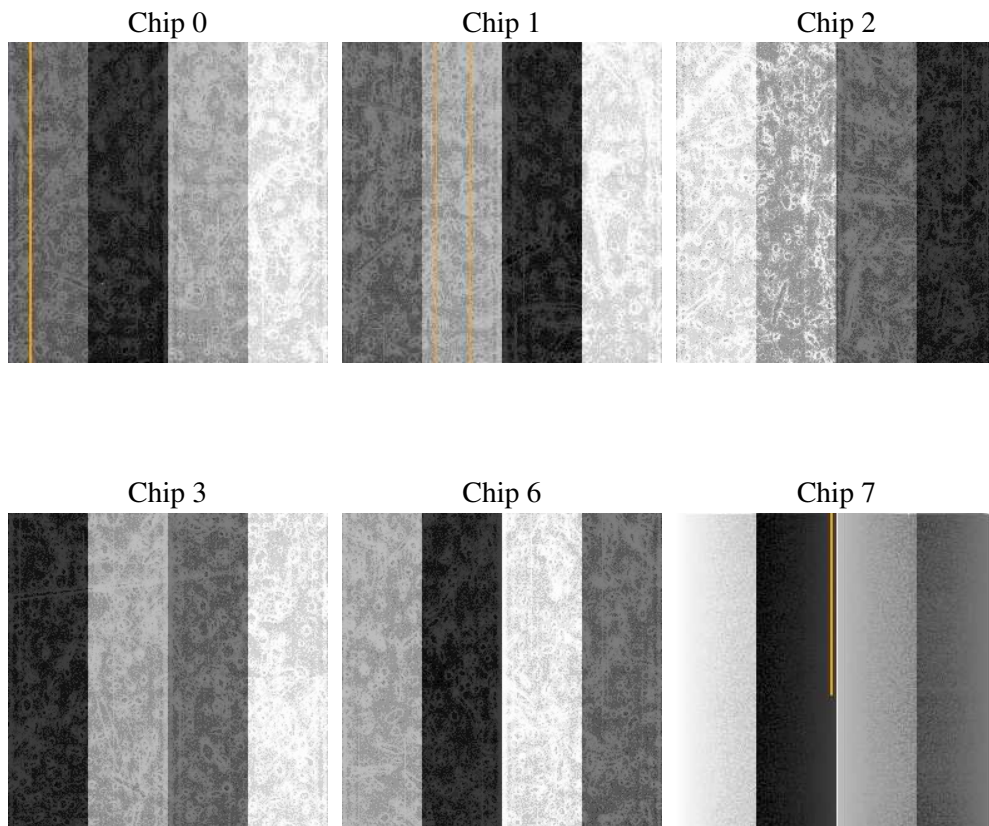
2 OBI

2.1 OBI

2.1.1 Images



2.1.2 Bias



2.1.3 Parameters

obi_num	0
ascdsver	7.6.7.1
caldsver	3.2.1
date	2006-03-19T04:43:12
revision	2

sched_exp_time	15000.000000
ontime	15271.630000532
ontime0	15271.63002041
ontime1	15271.63002041
ontime2	15271.63002041
ontime3	15271.630000532
ontime6	15271.63002041
ontime7	15271.63002041
l1events	695684

2.1.4 Events

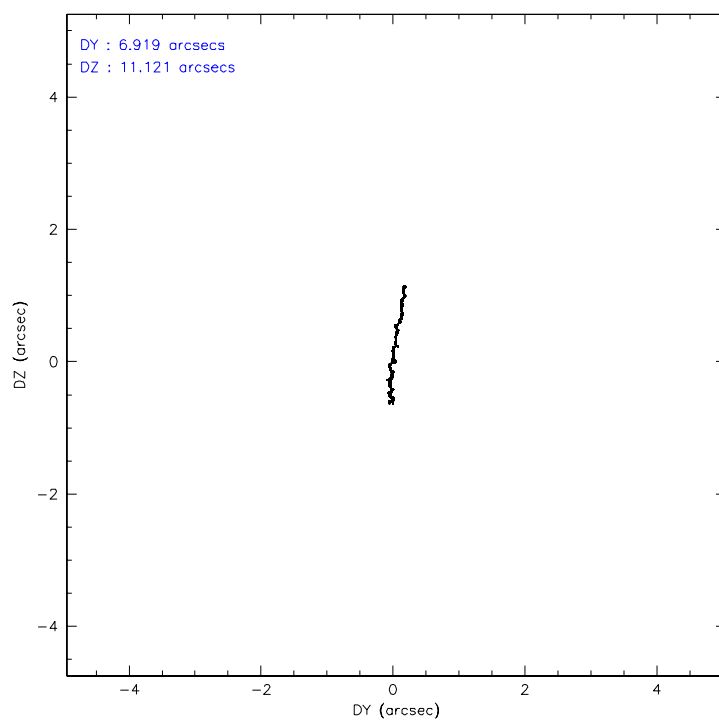
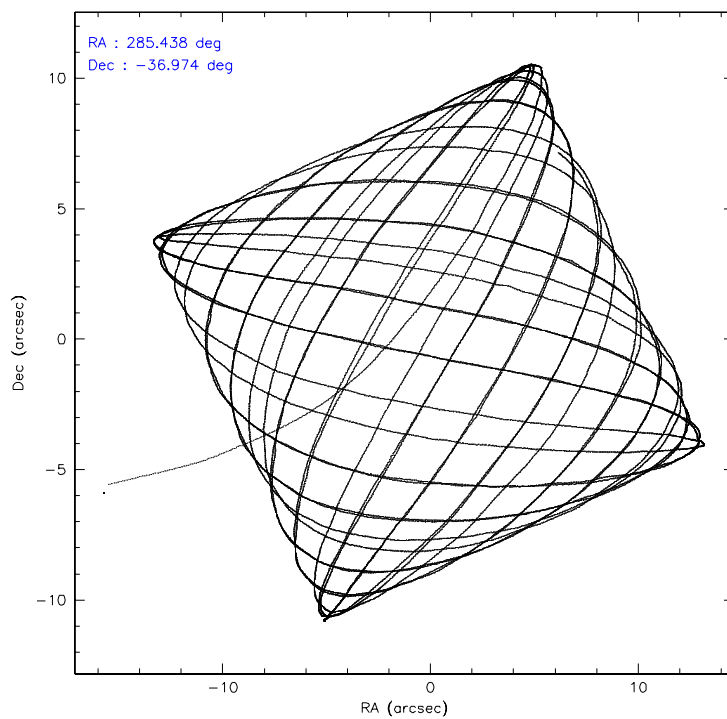
	ccd 0	ccd 1	ccd 2	ccd 3	ccd 6	ccd 7
level 1 events	108420	104356	108004	110412	113016	151476
rejected events	91681	89304	95180	93726	100084	95349
rejected %	84%	85%	88%	84%	88%	62%

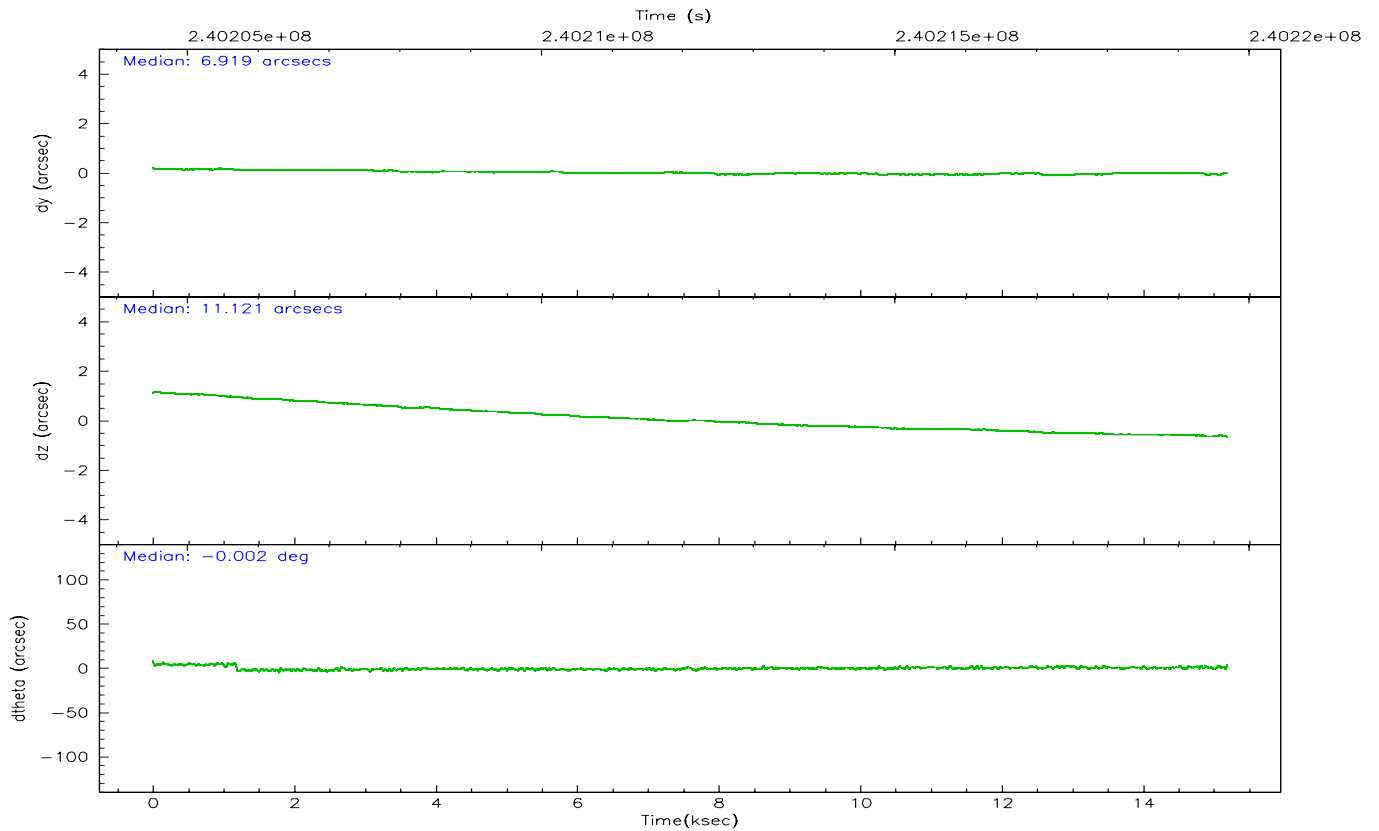
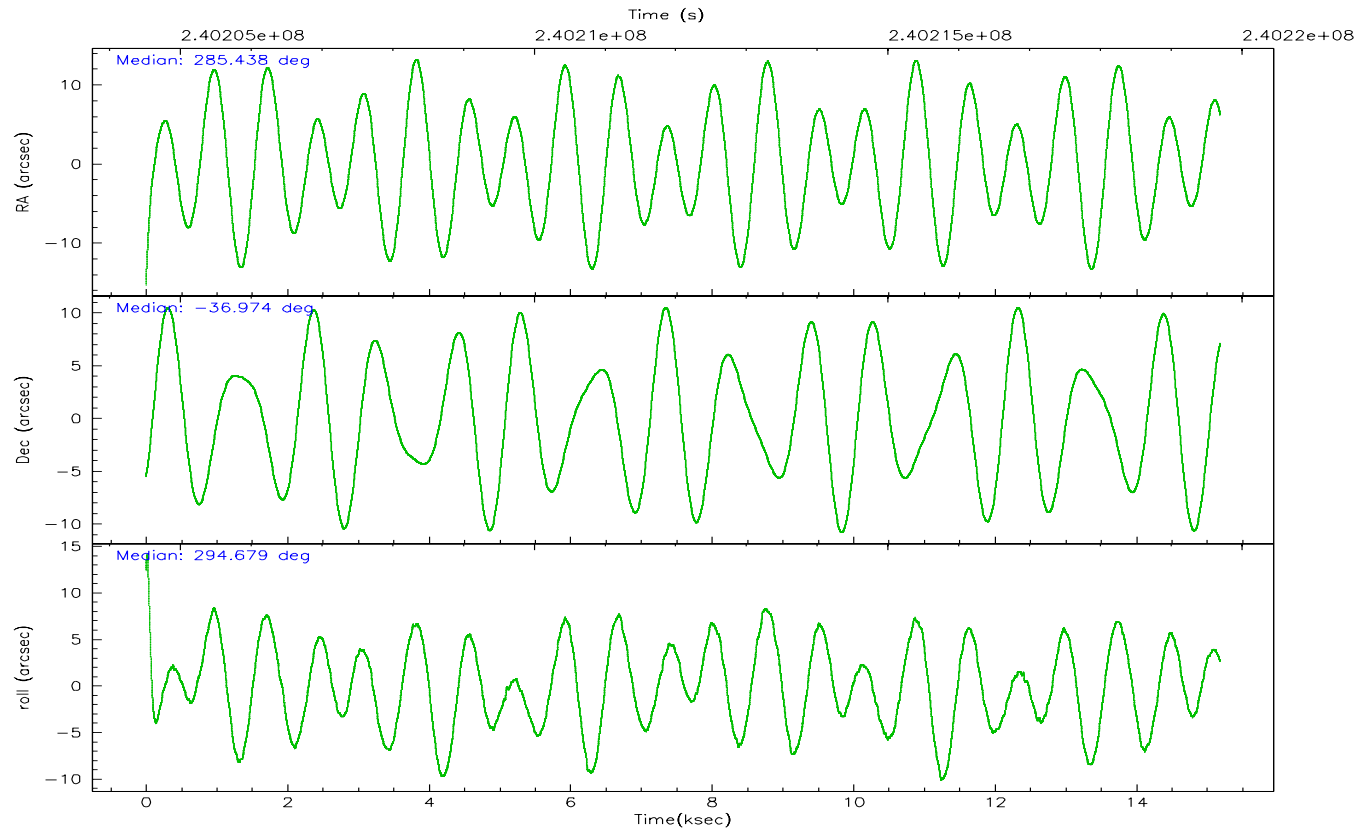
	ccd 0	ccd 1	ccd 2	ccd 3	ccd 6	ccd 7
grade 0 events	8546	6430	5685	8675	4915	2997
	7%	6%	5%	7%	4%	1%
grade 1 events	203	63	74	124	63	95
	0%	0%	0%	0%	0%	0%
grade 2 events	3189	3156	2622	2899	2782	14117
	2%	3%	2%	2%	2%	9%
grade 3 events	1397	1379	1238	1417	1323	2598
	1%	1%	1%	1%	1%	1%
grade 4 events	1309	1418	1205	1391	1256	2657
	1%	1%	1%	1%	1%	1%
grade 5 events	4557	4778	4245	4936	5438	9720
	4%	4%	3%	4%	4%	6%
grade 6 events	2423	2766	2167	2416	2744	34131
	2%	2%	2%	2%	2%	22%
grade 7 events	86796	84366	90768	88554	94495	85161
	80%	80%	84%	80%	83%	56%

2.2 Compared Parameters

Parameter	Planned	Actual	Parameter	Planned	Actual
Instrument	ACIS	ACIS	Obspar format version number	6	6
Detector	ACIS-012367	ACIS-012367	Obspar file type	PREDICTED	ACTUAL
Grating	NONE	NONE	Obspar update status	NONE	UPDATED
Data mode	FAINT	FAINT	On-chip summing requested	N	N
Observation mode	POINTING	POINTING	Subarray requested	NONE	NONE
Pointing RA	285.409628	285.4376915162979	Alternating exposures requested	N	N
Pointing Dec	-36.958052	-36.97377892801341	Primary exposure time	0.000000	3.2
Pointing Roll	294.464539	294.6901221851515			
SIM focus pos (mm)	-0.782348	-0.7823481983384333			
SIM defocus (mm)	0	1.724155329618782e-08			
SIM translation stage pos (mm)	-233.592463	-233.5874344608287			
SIM translation stage offset (mm)	0	-0.005018542100998502			
Observation start time	240204692.184000	240203577.02611			
Observation start date	2005-08-12T03:30:28	2005-08-12T03:12:57			
Observation end time	240219692.184000	240220497.21439			
Observation end date	2005-08-12T07:40:28	2005-08-12T07:54:57			
Read mode	TIMED	TIMED			

2.3 Aspect



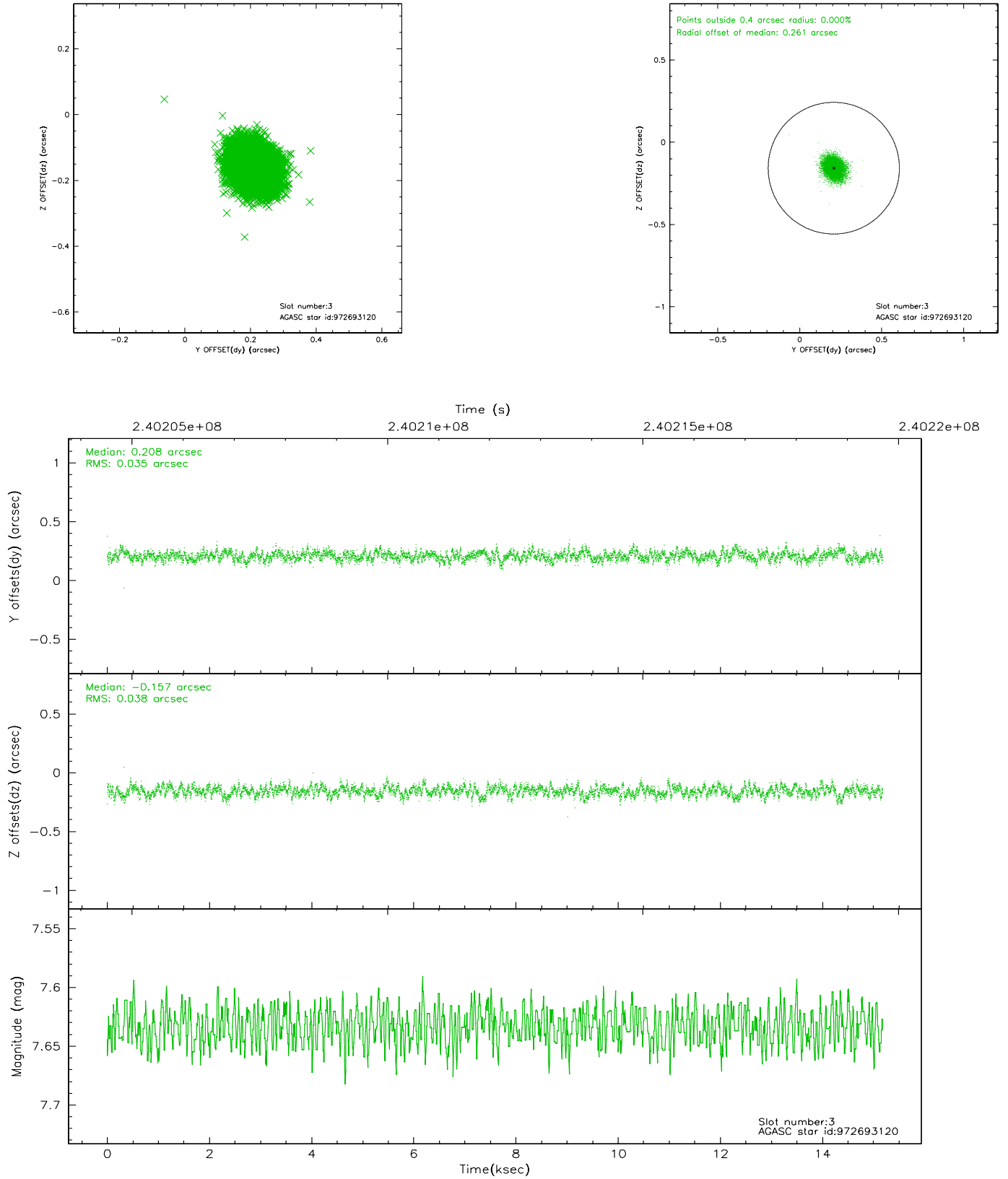


Slot Statistics

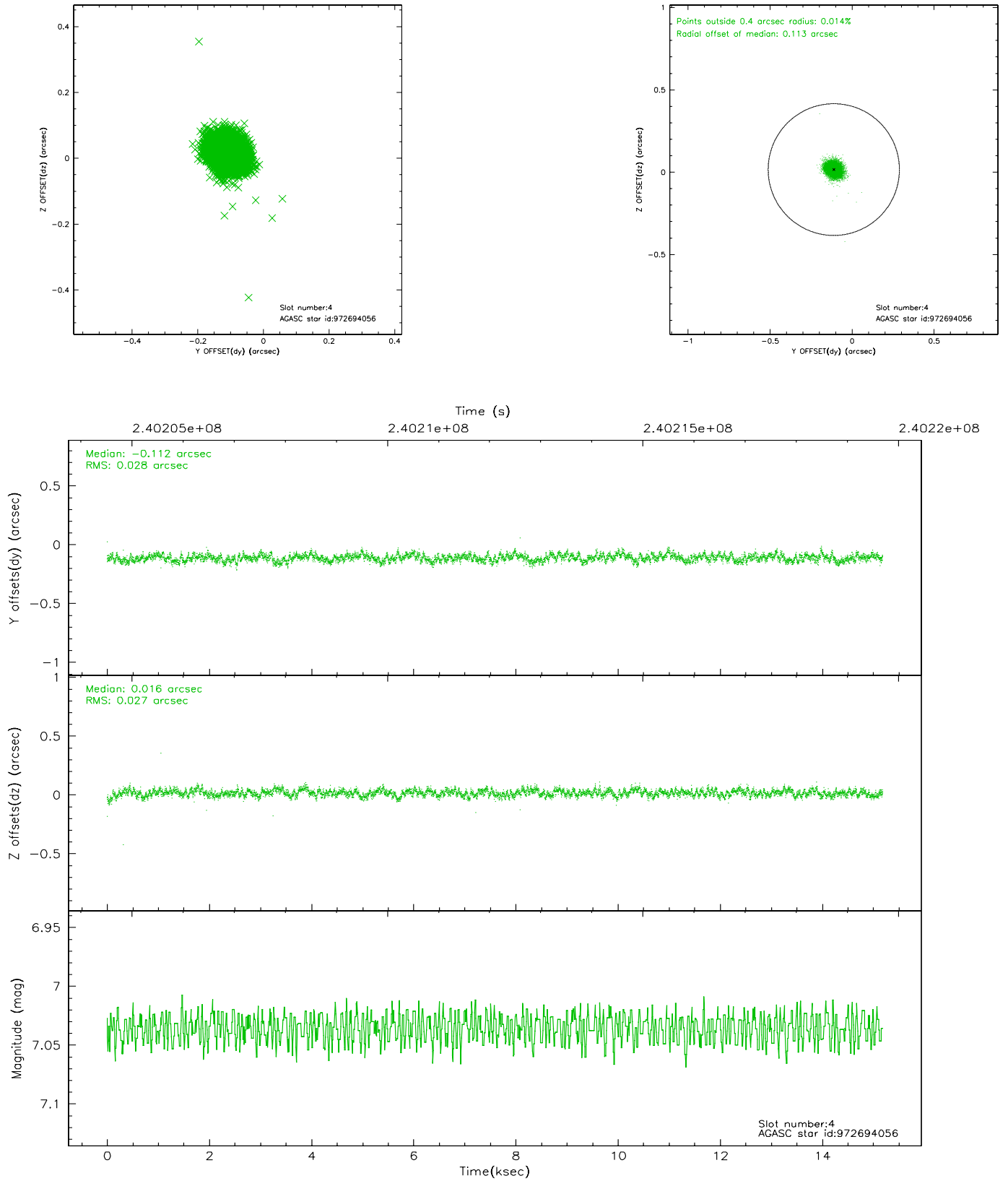
slot	status	id	mag	n_pts	med_dy	med_dz	dr1	dr2	ra	dec	mean_y	mean_z
0	FID	ACIS-I-1	7.24	3702	-0.056	0.023	0.022	0.032	0.000000	0.000000	932.68	-834.69
1	FID	ACIS-I-2	7.14	3702	-0.110	-0.046	0.011	0.019	0.000000	0.000000	-761.29	-841.36
2	FID	ACIS-I-4	7.17	3702	0.066	0.087	0.018	0.029	0.000000	0.000000	2152.56	1065.03
3	GUIDE	972693120	7.63	7404	0.208	-0.157	0.055	0.089	285.412210	-36.890704	-217.07	106.95
4	GUIDE	972694056	7.04	7405	-0.112	0.016	0.041	0.064	285.682787	-36.657985	-655.55	1164.83
5	GUIDE	1037567144	8.75	7401	0.003	0.040	0.073	0.118	284.940440	-37.605390	1570.76	-2184.06
6	GUIDE	972689192	8.92	7401	-0.105	-0.006	0.077	0.130	284.589186	-37.133486	-390.15	-2409.42
7	GUIDE	972816680	9.14	7399	0.002	0.111	0.100	0.156	286.054324	-36.904693	599.42	1766.08

2.4 Star Slots

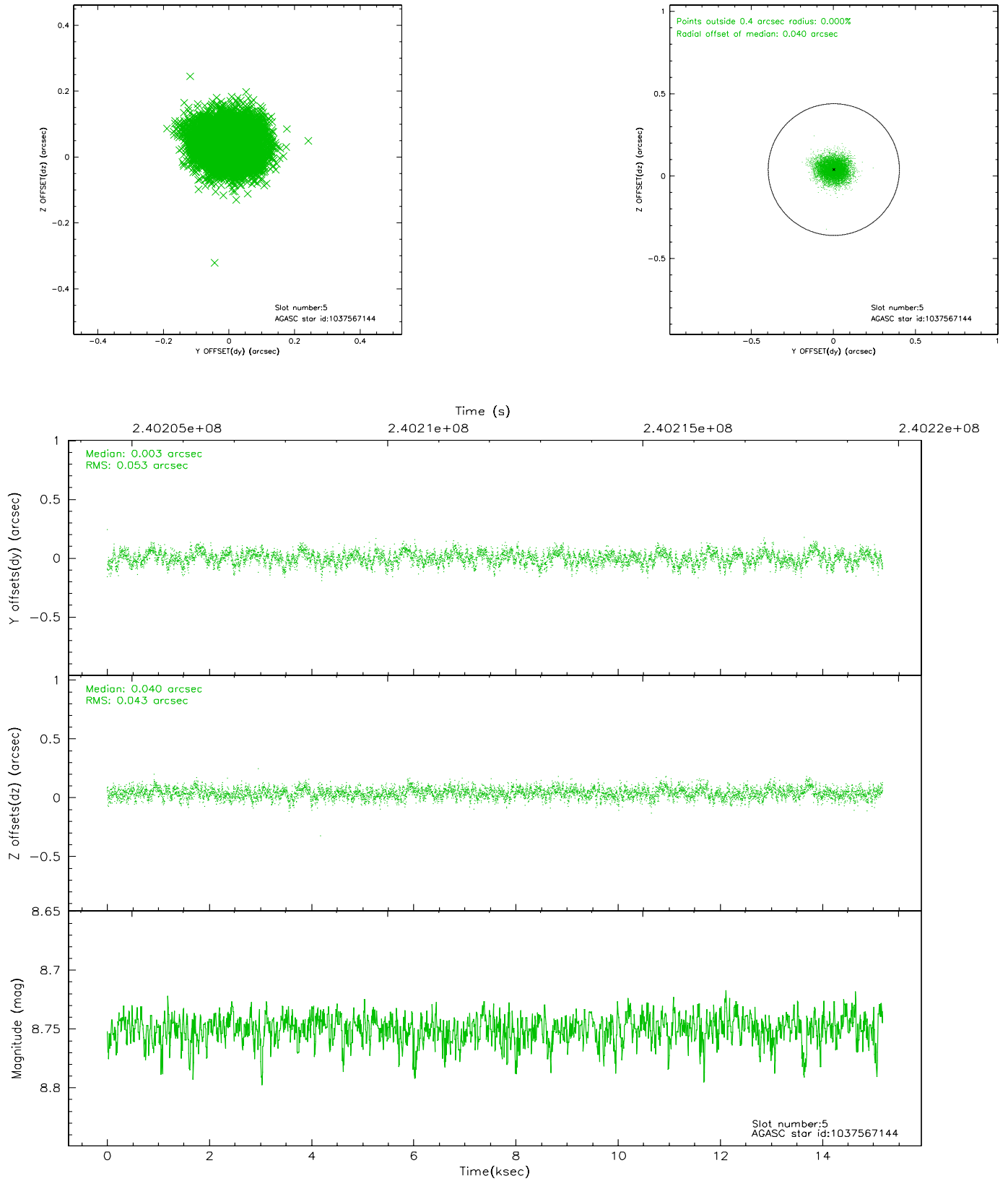
2.4.1 Slot 3



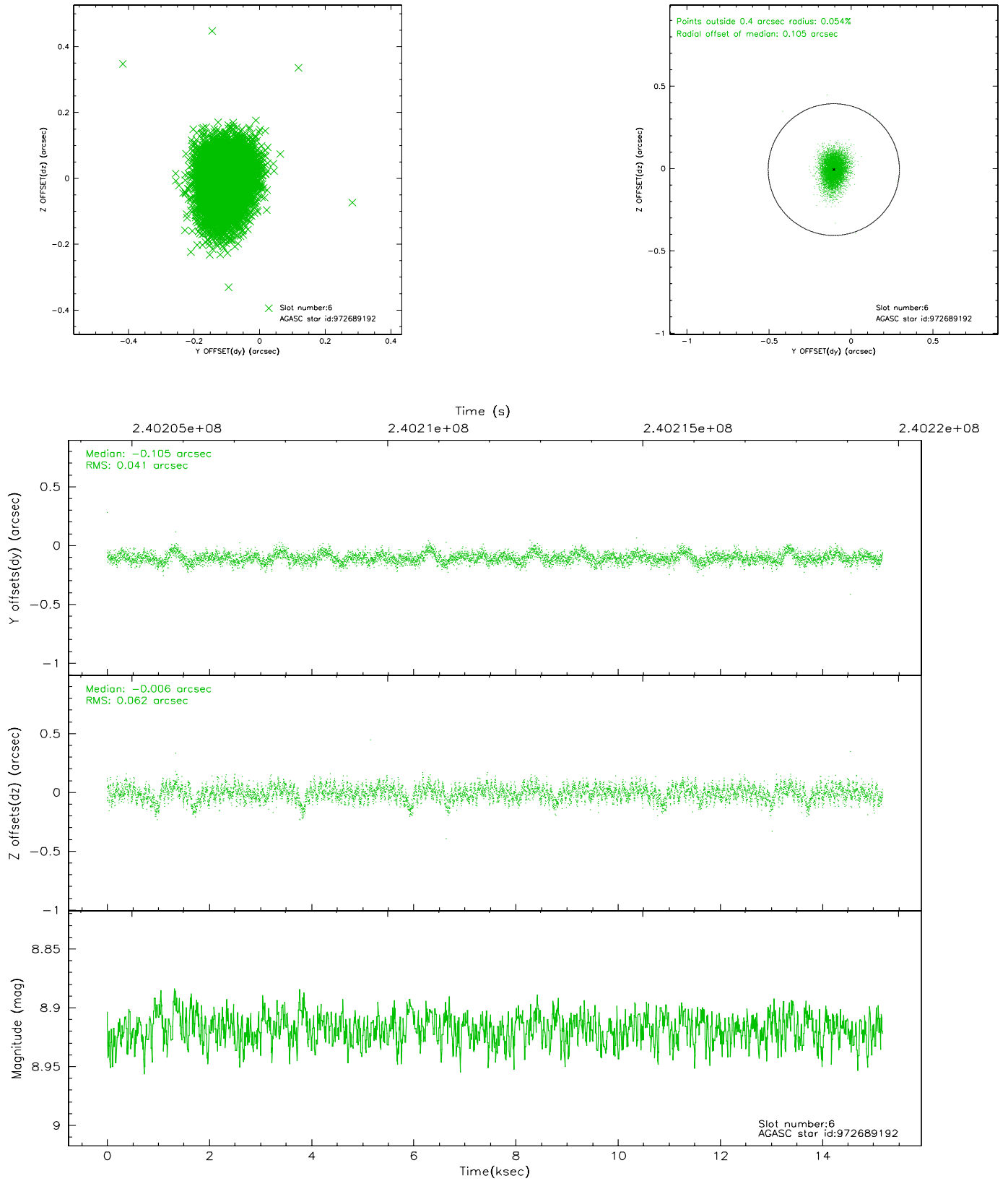
2.4.2 Slot 4



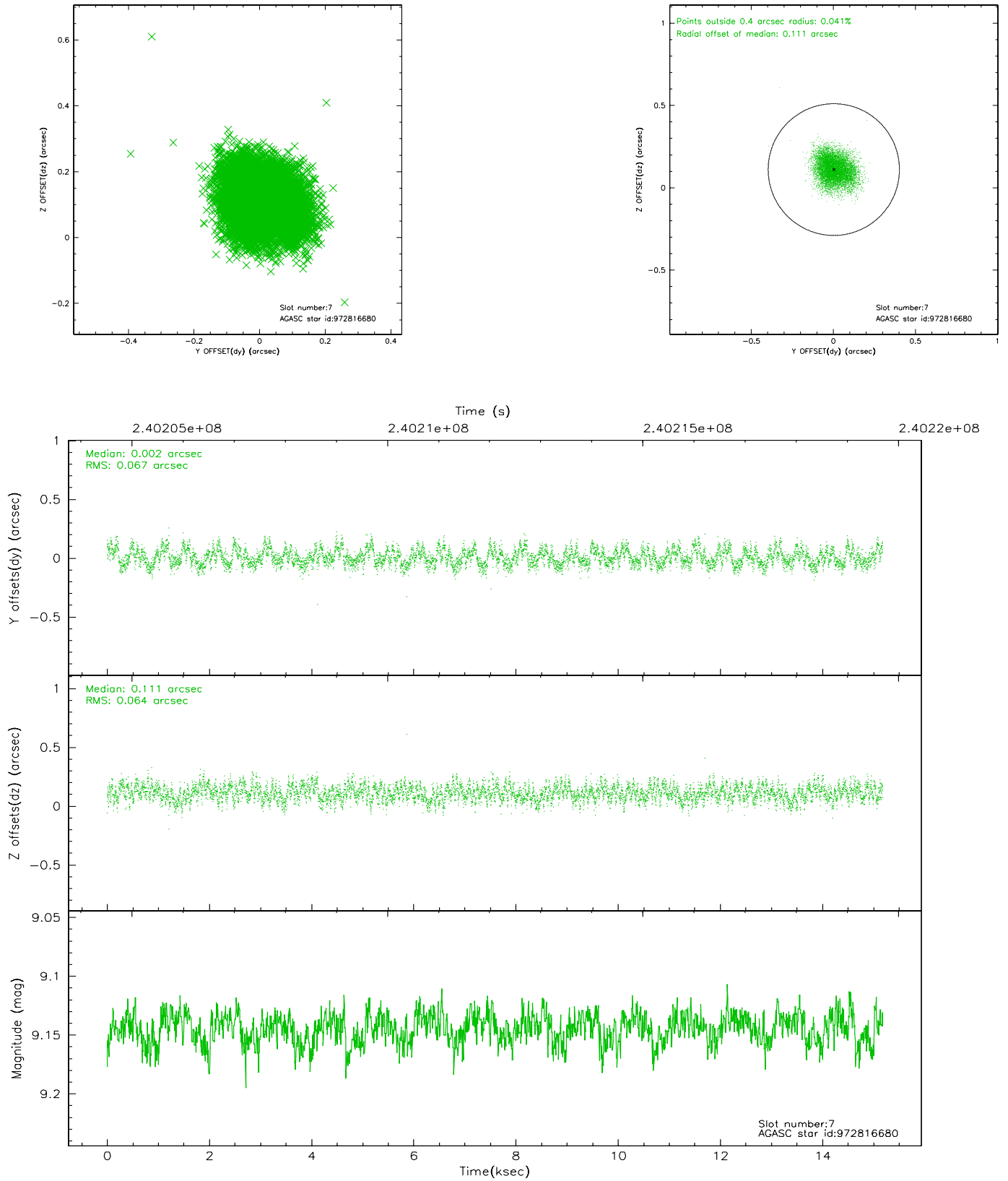
2.4.3 Slot 5



2.4.4 Slot 6

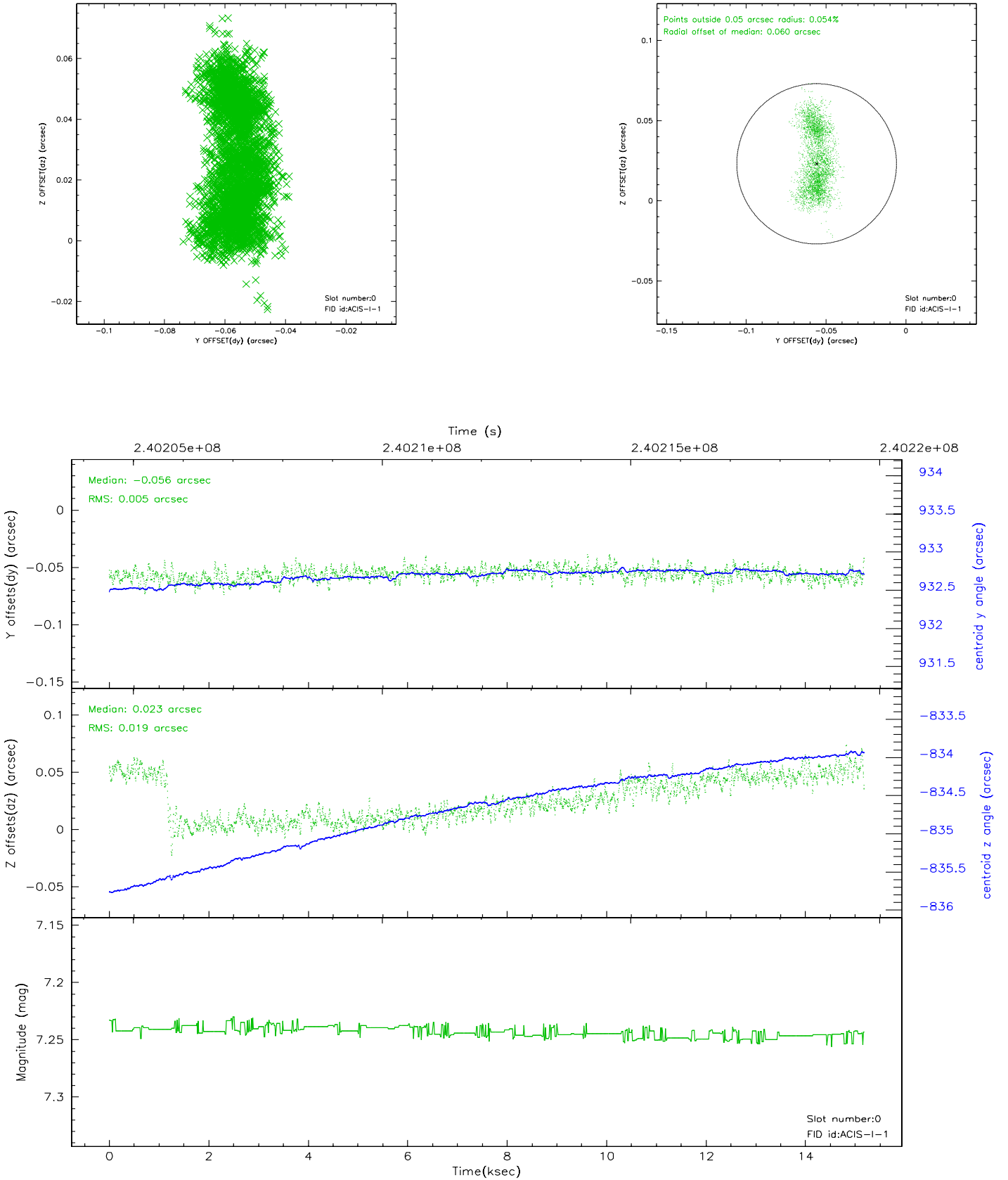


2.4.5 Slot 7

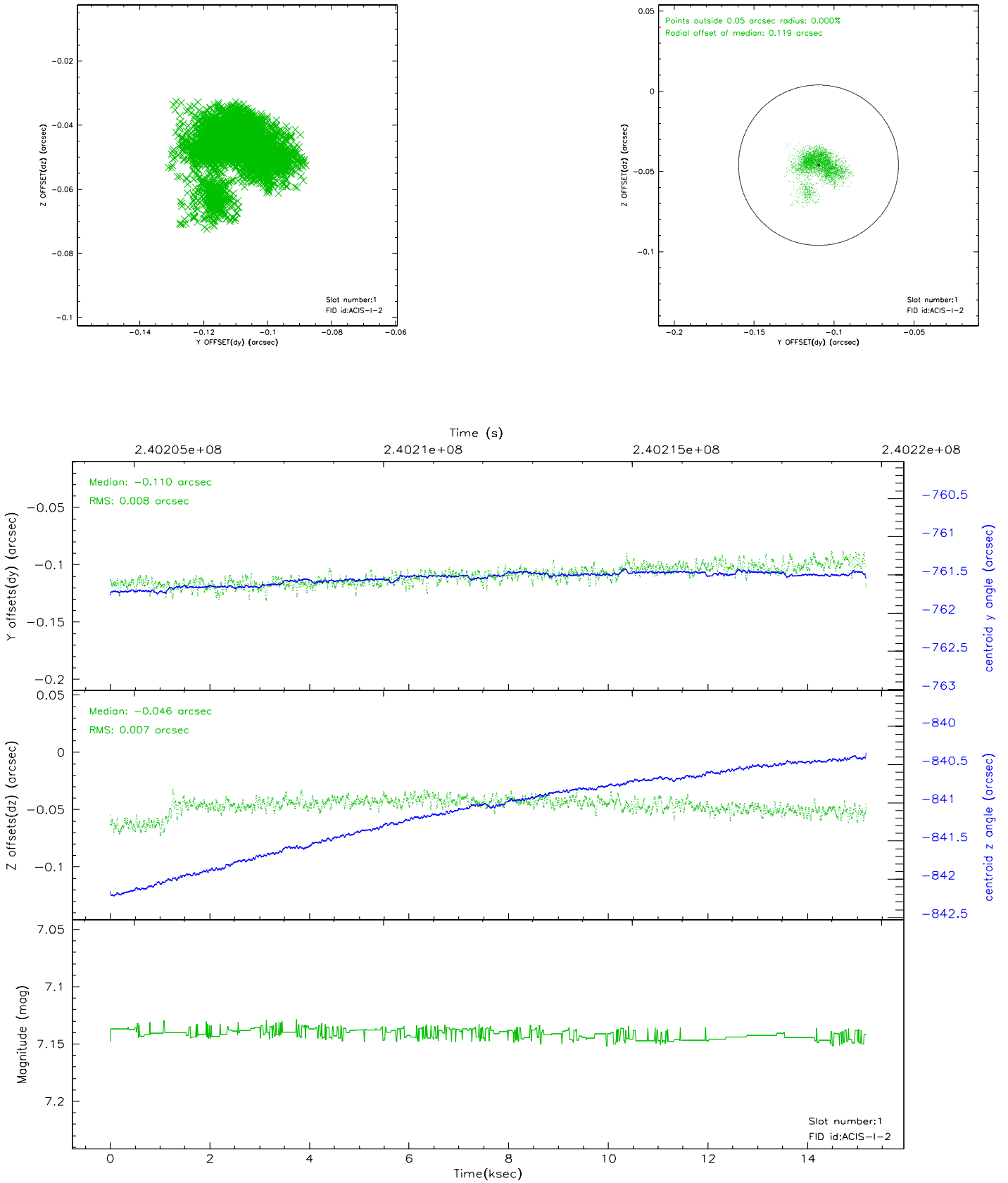


2.5 FID Slots

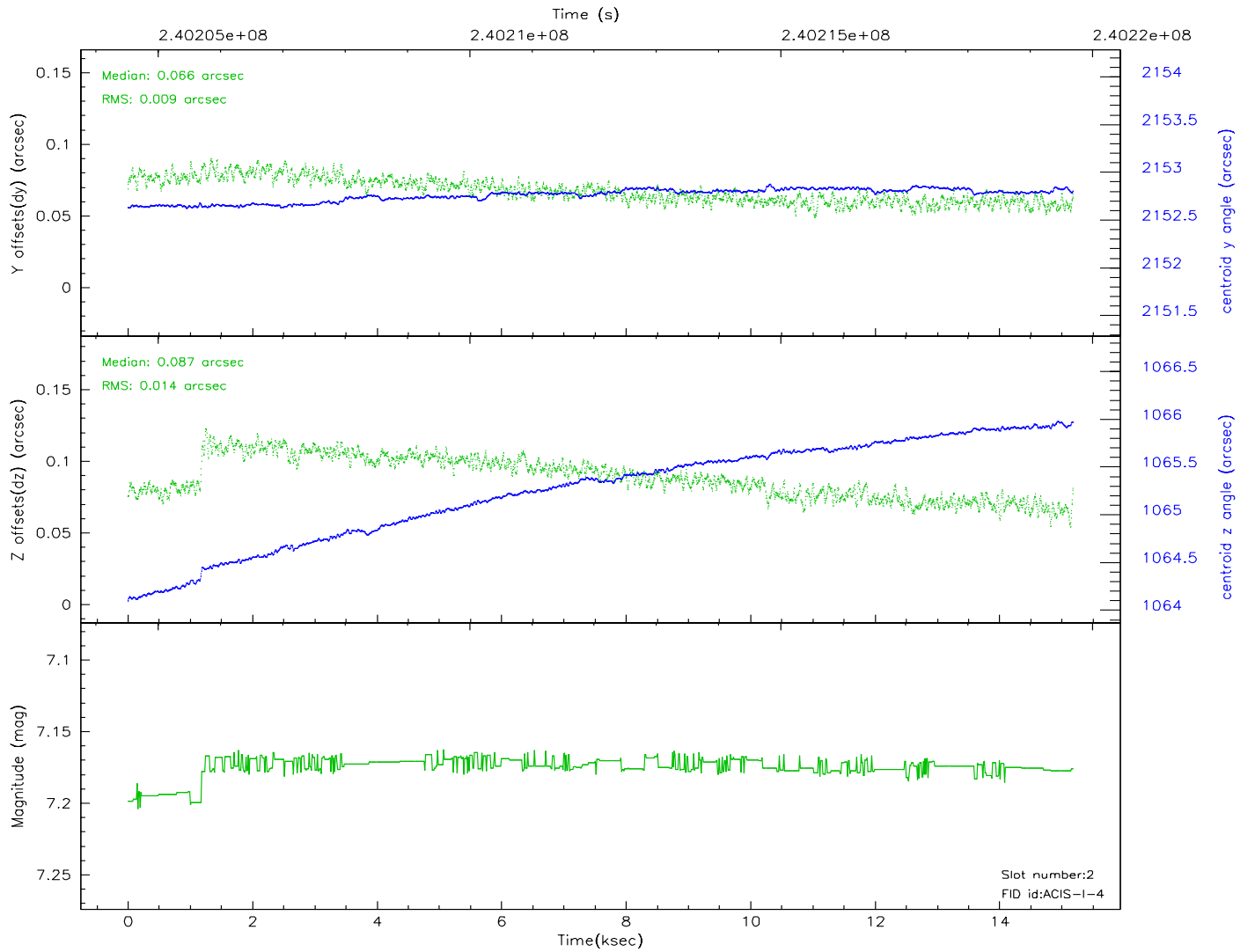
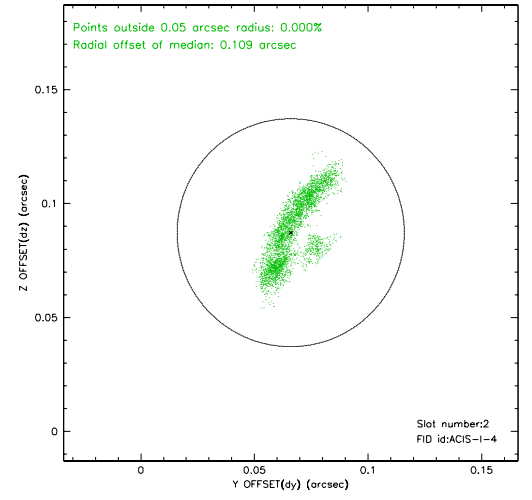
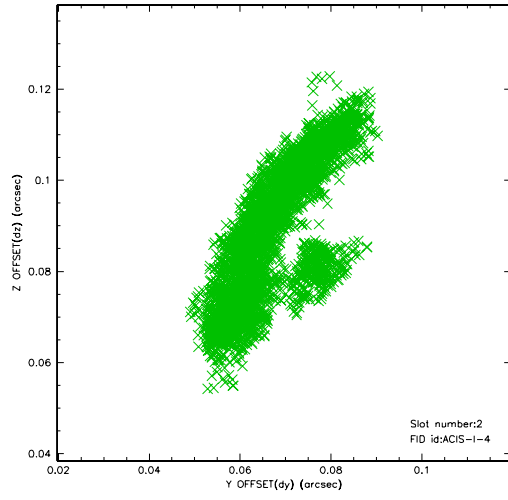
2.5.1 Slot 0



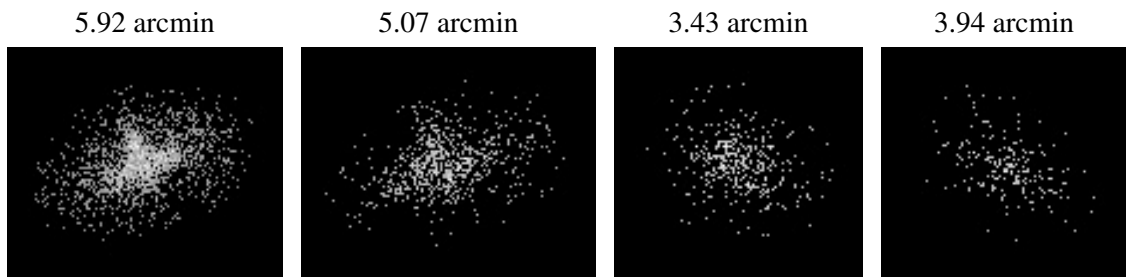
2.5.2 Slot 1



2.5.3 Slot 2



3 Point Sources



A Summary

A.1 Status

V&V Scientist	Jen Lauer
V&V Date (YYYY-MM-DD)	2006.03.20
V&V Edition	1
V&V Disposition and Status	OK
V&V Charge Time	15.1744

A.2 Comments