

# V&V Reference Report

## L2 ASCDS Version : 8.5.1.1

Observation 5403 - L2 Version 3  
Chandra X-Ray Center

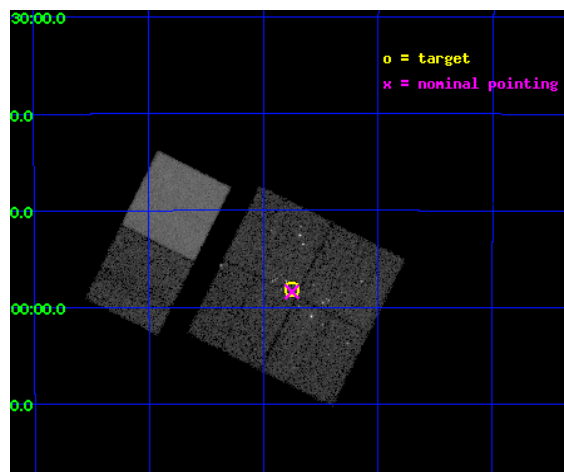
L2 Processing Date : Dec 27 2012

## Contents

<b>1</b>	<b>Front</b>	<b>2</b>
<b>2</b>	<b>OBI</b>	<b>3</b>
2.1	OBI . . . . .	3
2.1.1	Images . . . . .	3
2.1.2	Bias . . . . .	3
2.1.3	Parameters . . . . .	4
2.1.4	Events . . . . .	4
2.2	Compared Parameters . . . . .	5
2.3	Aspect . . . . .	6
2.4	Star Slots . . . . .	9
2.4.1	Slot 3 . . . . .	9
2.4.2	Slot 4 . . . . .	10
2.4.3	Slot 5 . . . . .	11
2.4.4	Slot 6 . . . . .	12
2.4.5	Slot 7 . . . . .	13
2.5	FID Slots . . . . .	14
2.5.1	Slot 0 . . . . .	14
2.5.2	Slot 1 . . . . .	15
2.5.3	Slot 2 . . . . .	16
<b>A</b>	<b>Summary</b>	<b>17</b>
A.1	Status . . . . .	17
A.2	Comments . . . . .	17

# 1 Front

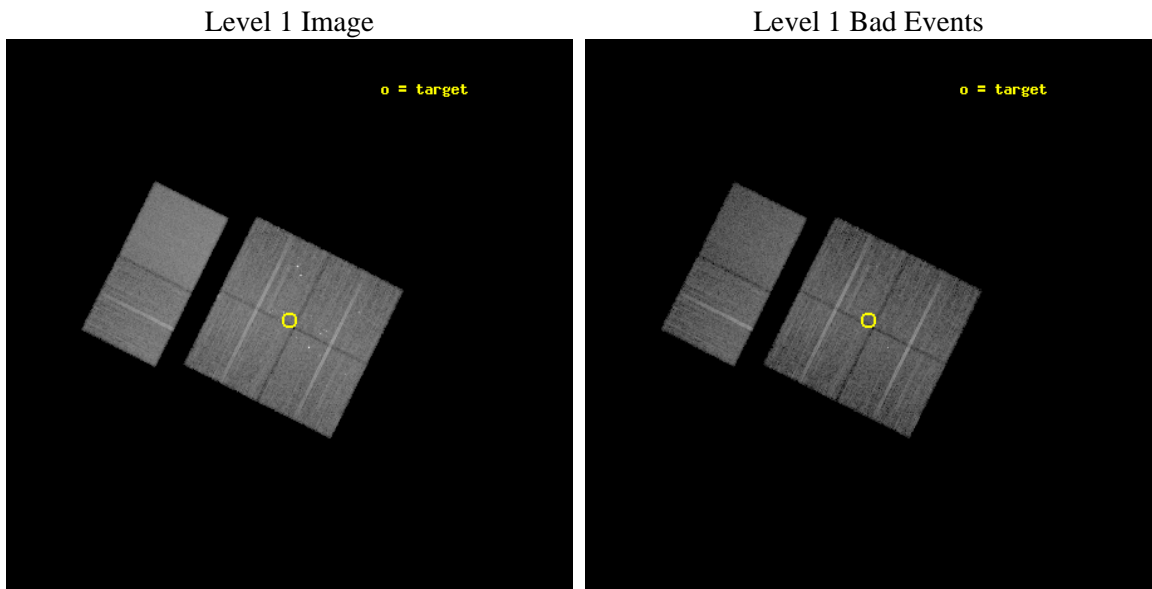
seq_num	200337	Sequence number
obs_id	5403	Observation id
title	Simultaneous X-ray and Radio Monitoring of YSO Activity in the Coronet Cluster	Proposal title
observer	Dr Jan Forbrich	Principal investigator
object	Coronet Cluster	Source name
dtcycle	0	&#160
cycle	P	events from which exps? Prim/Second/Both
ra_targ	285.4375	Observer's specified target RA [deg]
dec_targ	-36.969167	Observer's specified target Dec [deg]
ra_nom	285.43784161597	Nominal RA [deg]
dec_nom	-36.973793942172	Nominal Dec [deg]
roll_nom	296.55891960048	Nominal Roll [deg]
revision	3	Processing version of data
ontime	15145.558943391	Sum of GTIs [s]
livetime	14953.776756489	Livetime [s]
ontime0	15142.317943156	Sum of GTIs [s]
ontime1	15145.558943391	Sum of GTIs [s]
ontime2	15148.799943566	Sum of GTIs [s]
ontime3	15145.558943391	Sum of GTIs [s]
ontime6	15145.558953255	Sum of GTIs [s]
ontime7	15148.799943566	Sum of GTIs [s]
l2events	121614	Number of level 2 events



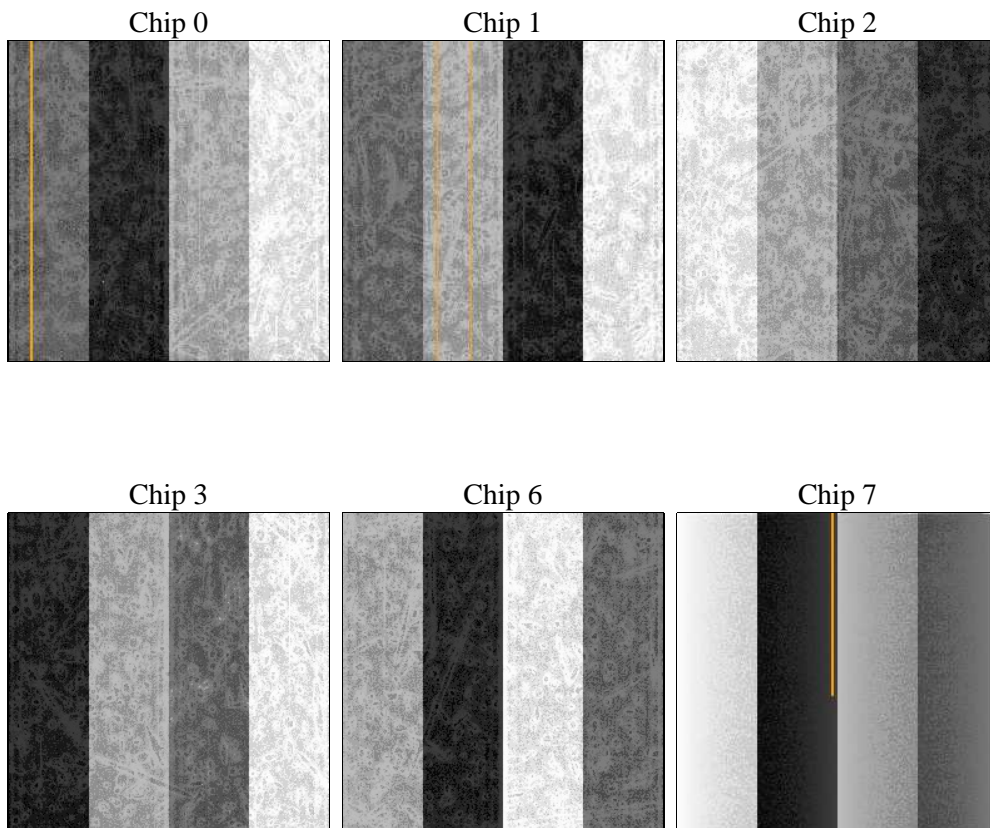
## 2 OBI

### 2.1 OBI

#### 2.1.1 Images



#### 2.1.2 Bias



### 2.1.3 Parameters

obi_num	0	Obi number	sched_exp_time	15000.000000	[s] Scheduled observation exposure time
ascdsver	8.5.1.1	Processing system revision	ontime	15145.558943391	Sum of GTIs [s]
caldsver	4.5.5	&#160	ontime0	15142.317943156	Sum of GTIs [s]
date	2012-12-27T04:07:45	Date and time of file creation	ontime1	15145.558943391	Sum of GTIs [s]
revision	3	Processing version of data	ontime2	15148.799943566	Sum of GTIs [s]
			ontime3	15145.558943391	Sum of GTIs [s]
			ontime6	15145.558953255	Sum of GTIs [s]
			ontime7	15148.799943566	Sum of GTIs [s]
			l1events	710475	Number of level 1 events

### 2.1.4 Events

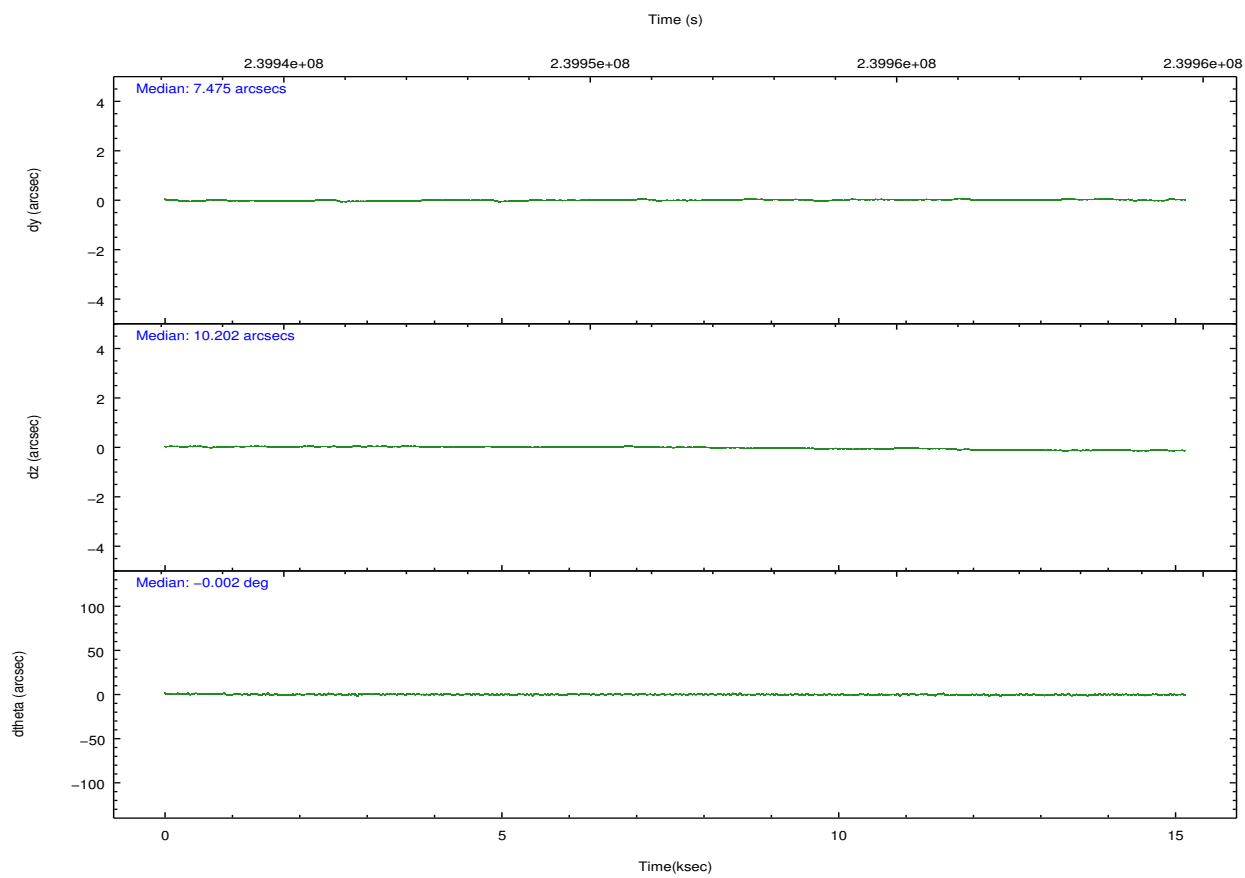
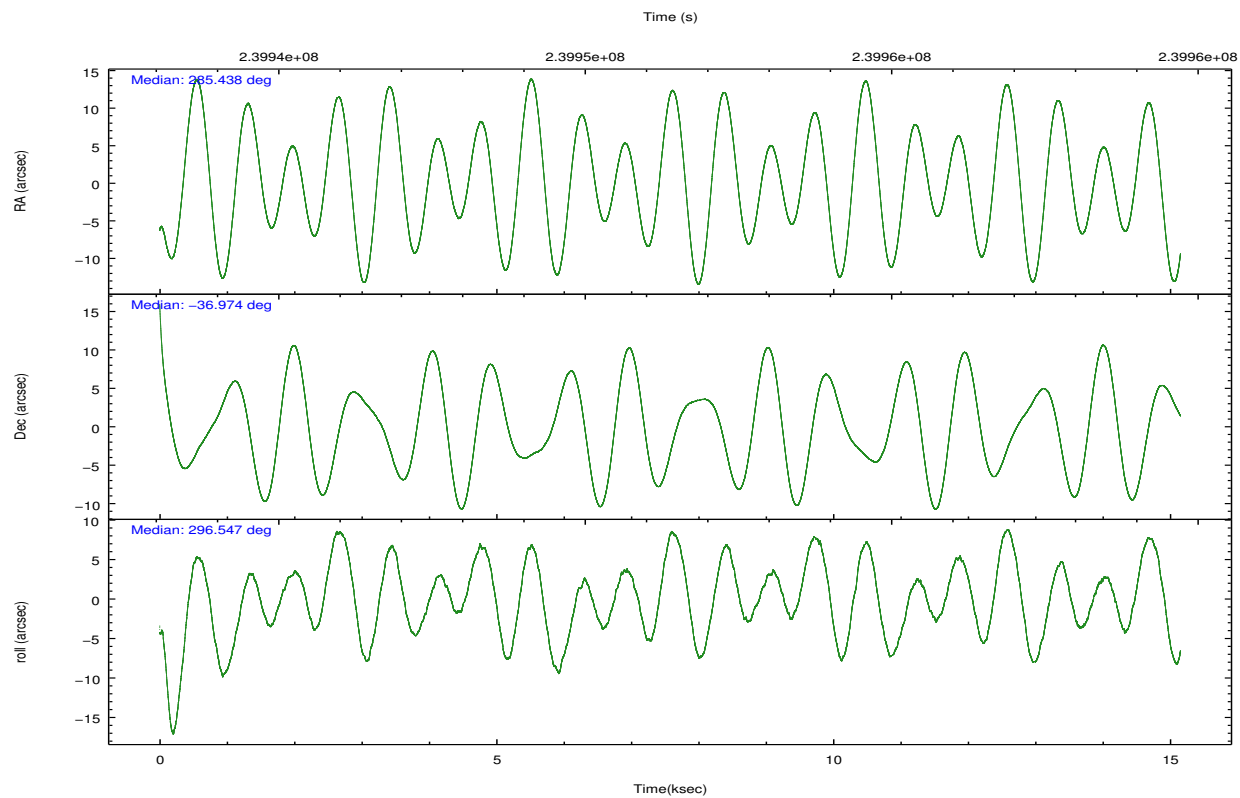
	ccd 0	ccd 1	ccd 2	ccd 3	ccd 6	ccd 7		ccd 0	ccd 1	ccd 2	ccd 3	ccd 6	ccd 7
level 1 events	106521	105873	111245	114090	117646	155100	grade 0 events	9173	6570	5829	8749	4915	5466
rejected events	89524	91016	98824	98021	105278	95801		8%	6%	5%	7%	4%	3%
rejected %	84%	85%	88%	85%	89%	61%	grade 1 events	290	61	62	110	46	133
								0%	0%	0%	0%	0%	0%
							grade 2 events	3344	3394	2745	3030	2996	12543
								3%	3%	2%	2%	2%	8%
							grade 3 events	1501	1464	1216	1381	1269	5609
								1%	1%	1%	1%	1%	3%
							grade 4 events	1389	1404	1273	1389	1293	5363
								1%	1%	1%	1%	1%	3%
							grade 5 events	4660	4843	4406	5192	5486	14669
								4%	4%	3%	4%	4%	9%
							grade 6 events	2540	2971	2196	2457	2798	34368
								2%	2%	1%	2%	2%	22%
							grade 7 events	83624	85166	93518	91782	98843	76949
								78%	80%	84%	80%	84%	49%



## 2.2 Compared Parameters

Parameter	Planned	Actual	Parameter	Planned	Actual
Instrument	ACIS	ACIS	Obspar format version number	7	7
Detector	ACIS-012367	ACIS-012367	Obspar file type	PREDICTED	ACTUAL
Grating	NONE	NONE	Obspar update status	NONE	UPDATED
Data mode	FAINT	FAINT	Number of optional ACIS chips dropped	0	0
Observation mode	POINTING	POINTING	On-chip summing requested	N	N
[deg] Pointing RA	285.409198	285.437841615966	Subarray requested	NONE	NONE
[deg] Pointing Dec	-36.958793	-36.97379394217164	Alternating exposures requested	N	N
[deg] Pointing Roll	296.333004	296.5589196004843	[s] Primary exposure time	0.000000	3.2
[mm] SIM focus pos	-0.782348	-0.7809083437167272			
[mm] SIM defocus	0	0.001439871863259334			
[mm] SIM translation stage pos	-233.592463	-233.5874344608287			
[mm] SIM translation stage offset	0	-0.005018542100998502			
[s] Observation start time (MET)	239943956.184000	239942332.70163			
Observation start date	2005-08-09T03:04:52	2005-08-09T02:38:52			
[s] Observation end time (MET)	239958956.184000	239959330.27741			
Observation end date	2005-08-09T07:14:52	2005-08-09T07:22:10			
Read mode	TIMED	TIMED			

## 2.3 Aspect

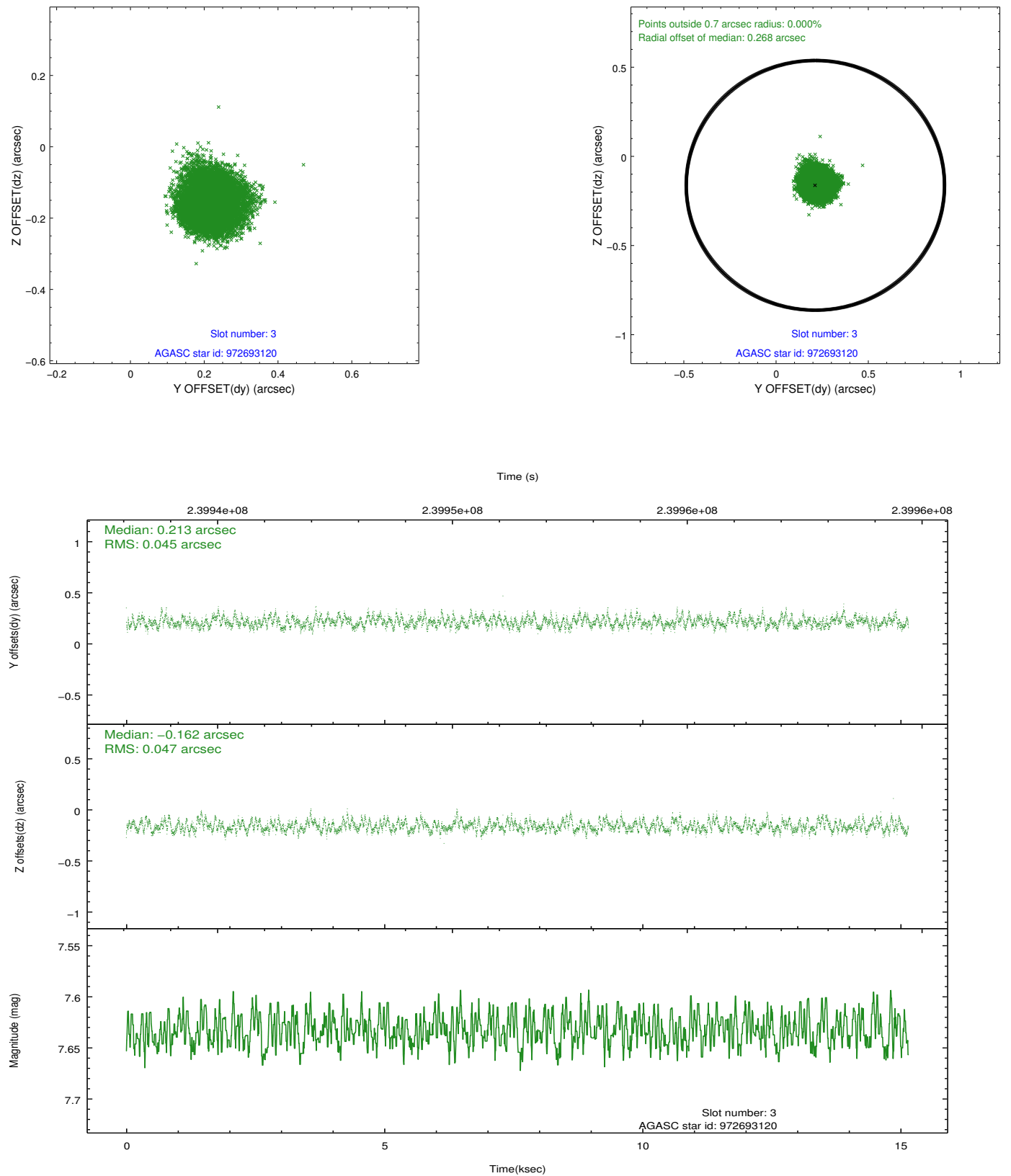


Slot Statistics

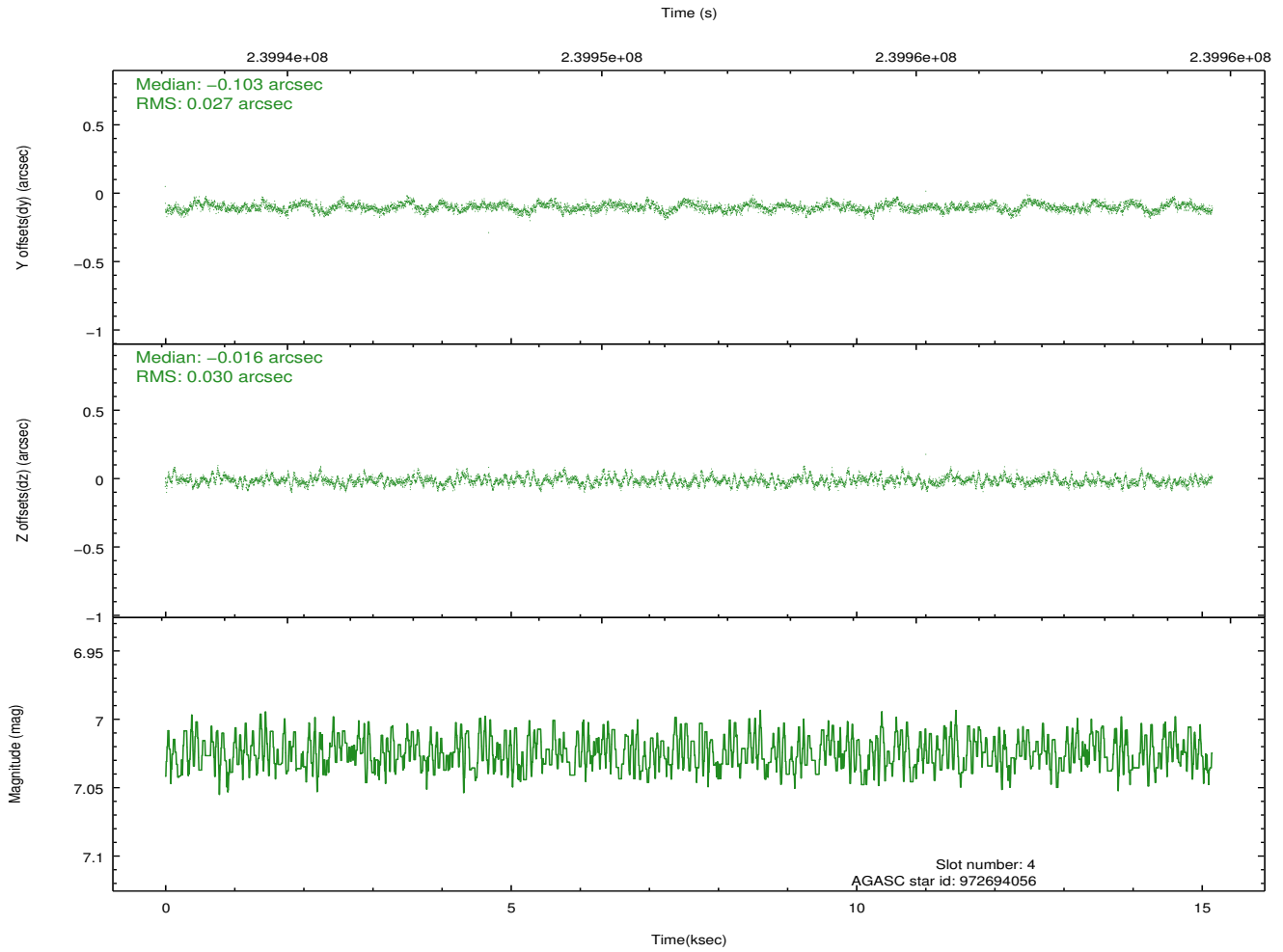
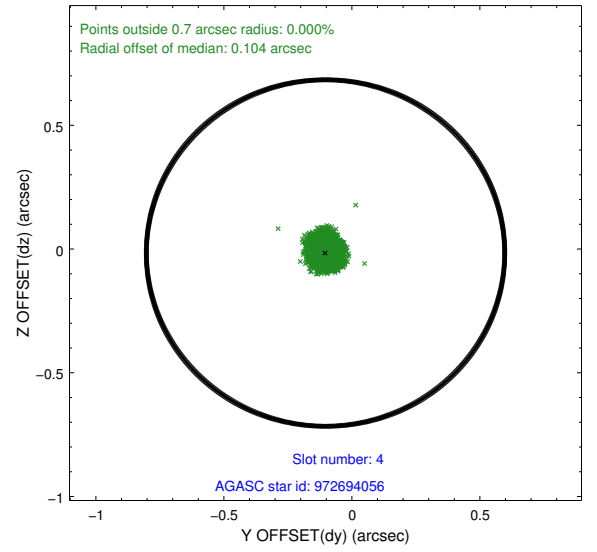
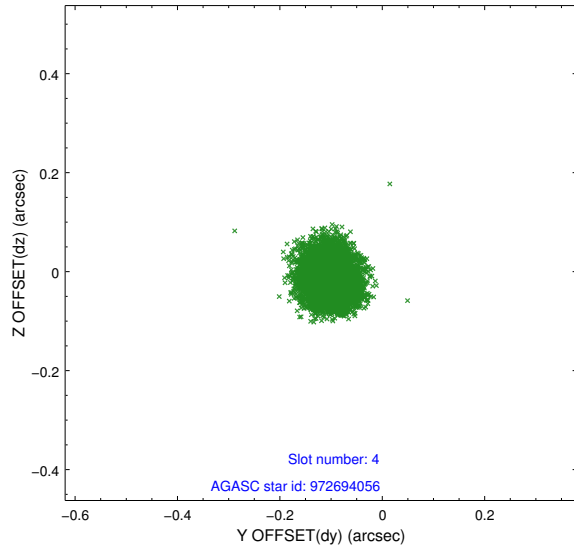
slot	status	id	mag	n_pts	med_dy	med_dz	dr1	dr2	ra	dec	mean_y	mean_z
0	FID	ACIS-I-1	7.24	3695	0.015	0.002	0.007	0.012	0.000000	0.000000	932.21	-833.65
1	FID	ACIS-I-5	7.23	3697	-0.171	0.030	0.006	0.010	0.000000	0.000000	-1815.92	1063.72
2	FID	ACIS-I-6	7.26	3695	0.065	0.037	0.007	0.011	0.000000	0.000000	397.48	1708.56
3	GUIDE	972693120	7.63	7393	0.213	-0.162	0.070	0.107	285.412210	-36.890704	-215.23	116.43
4	GUIDE	972694056	7.03	7393	-0.103	-0.016	0.043	0.071	285.682787	-36.657985	-619.00	1188.00
5	GUIDE	1037567144	8.75	7389	-0.022	0.037	0.070	0.110	284.940440	-37.605390	1496.92	-2231.64
6	GUIDE	972689192	8.91	7389	-0.080	0.054	0.083	0.135	284.589186	-37.133486	-470.24	-2392.91
7	GUIDE	972816680	9.15	7389	-0.009	0.086	0.084	0.132	286.054324	-36.904693	654.88	1748.02

## 2.4 Star Slots

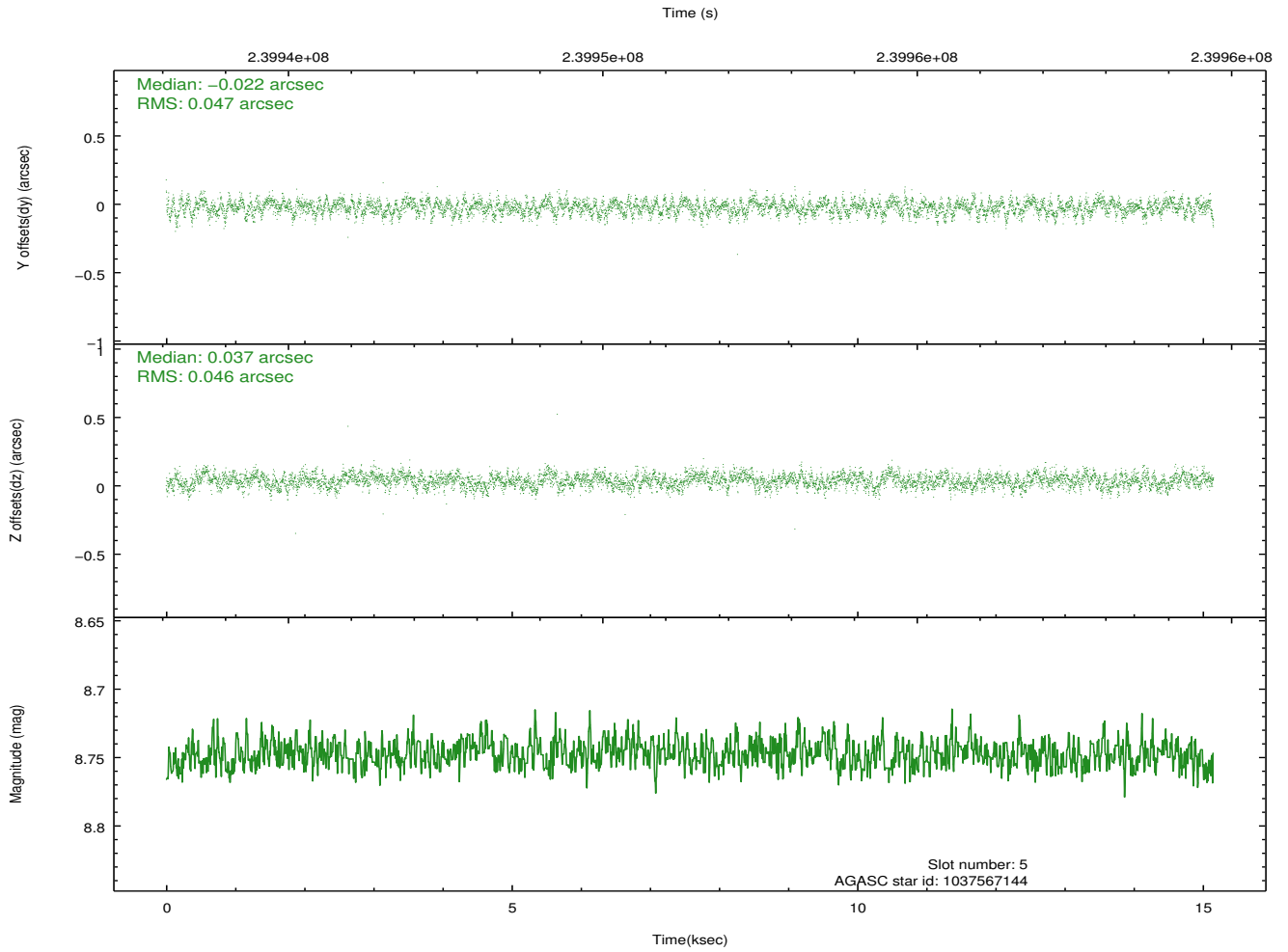
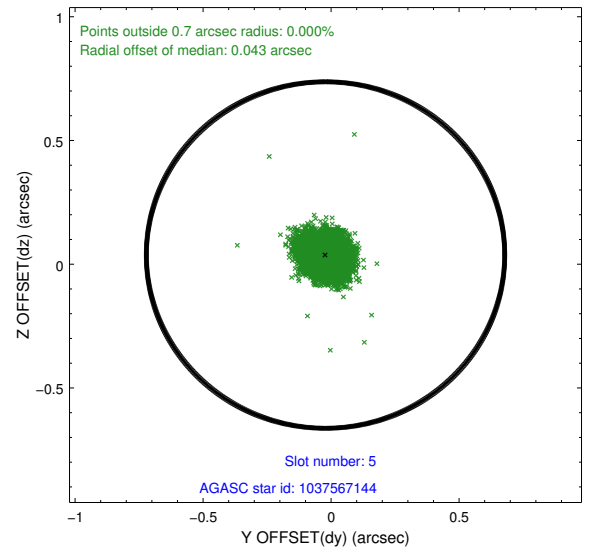
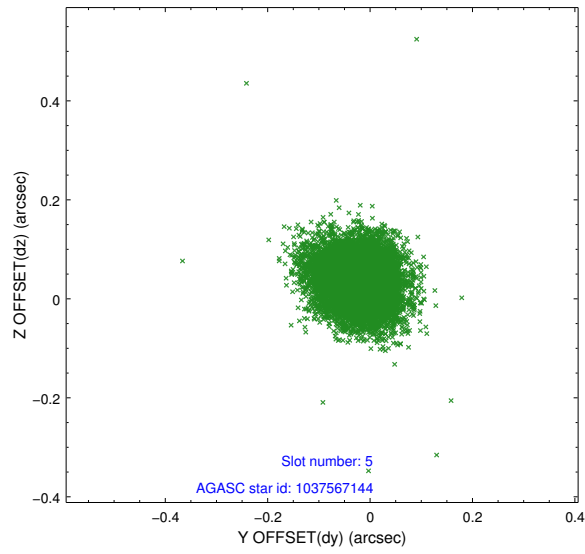
### 2.4.1 Slot 3



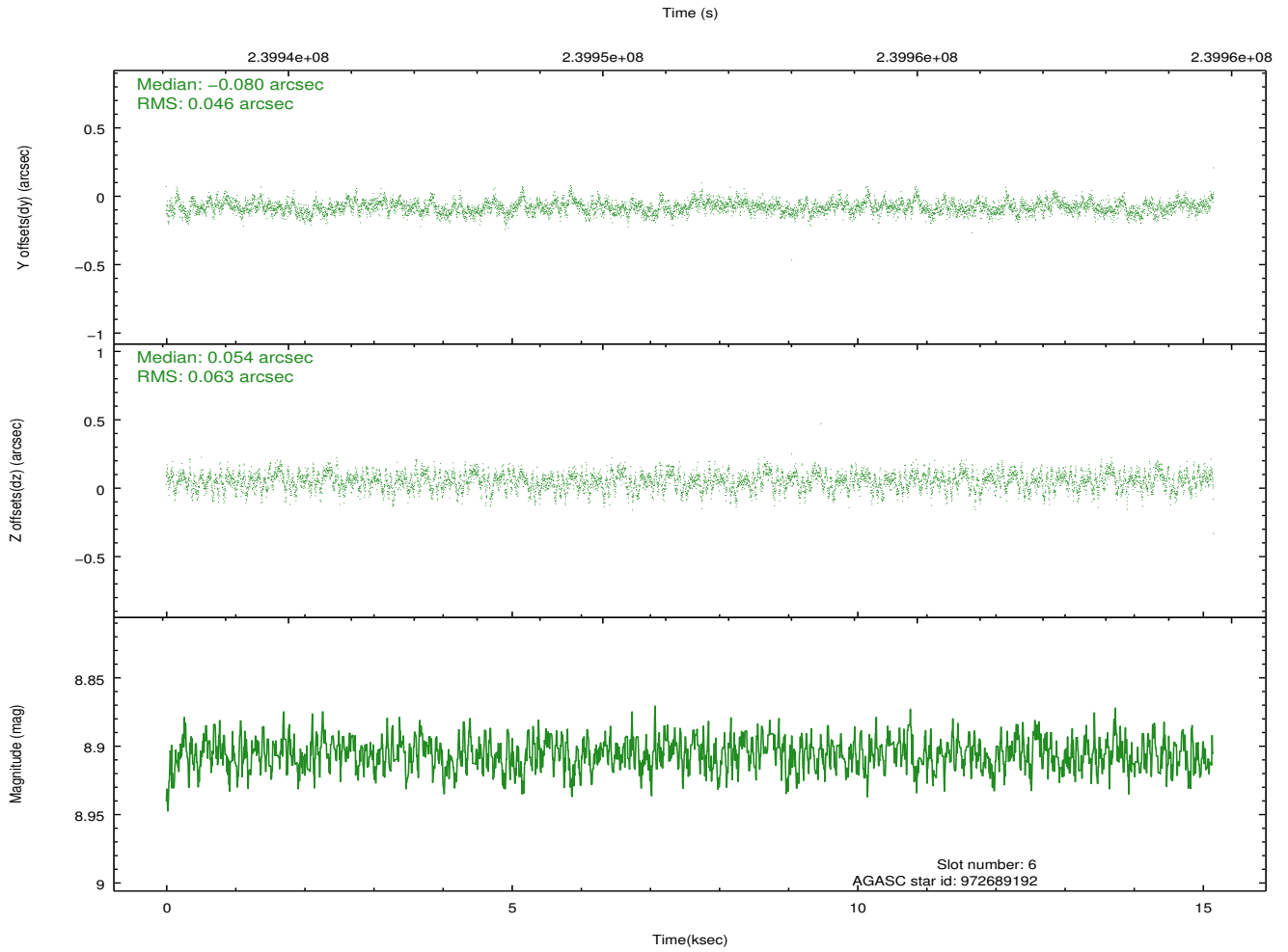
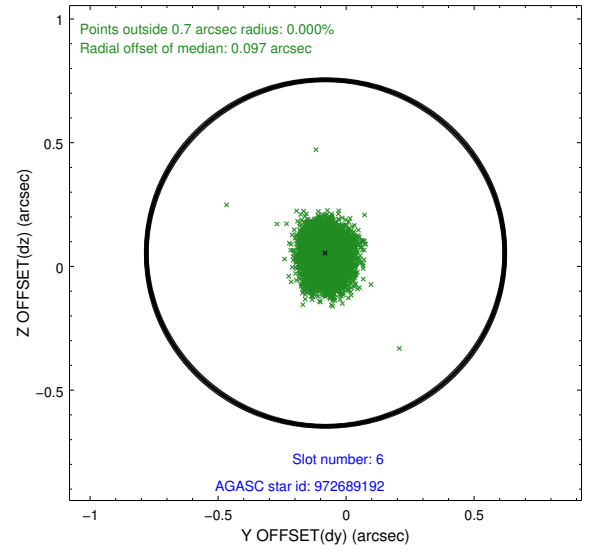
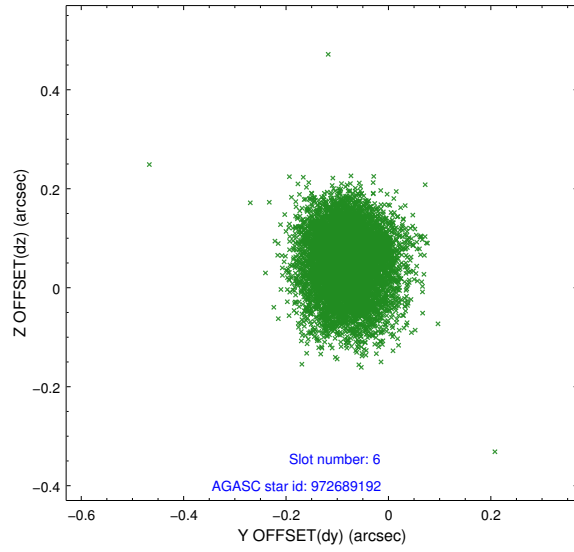
## 2.4.2 Slot 4



### 2.4.3 Slot 5

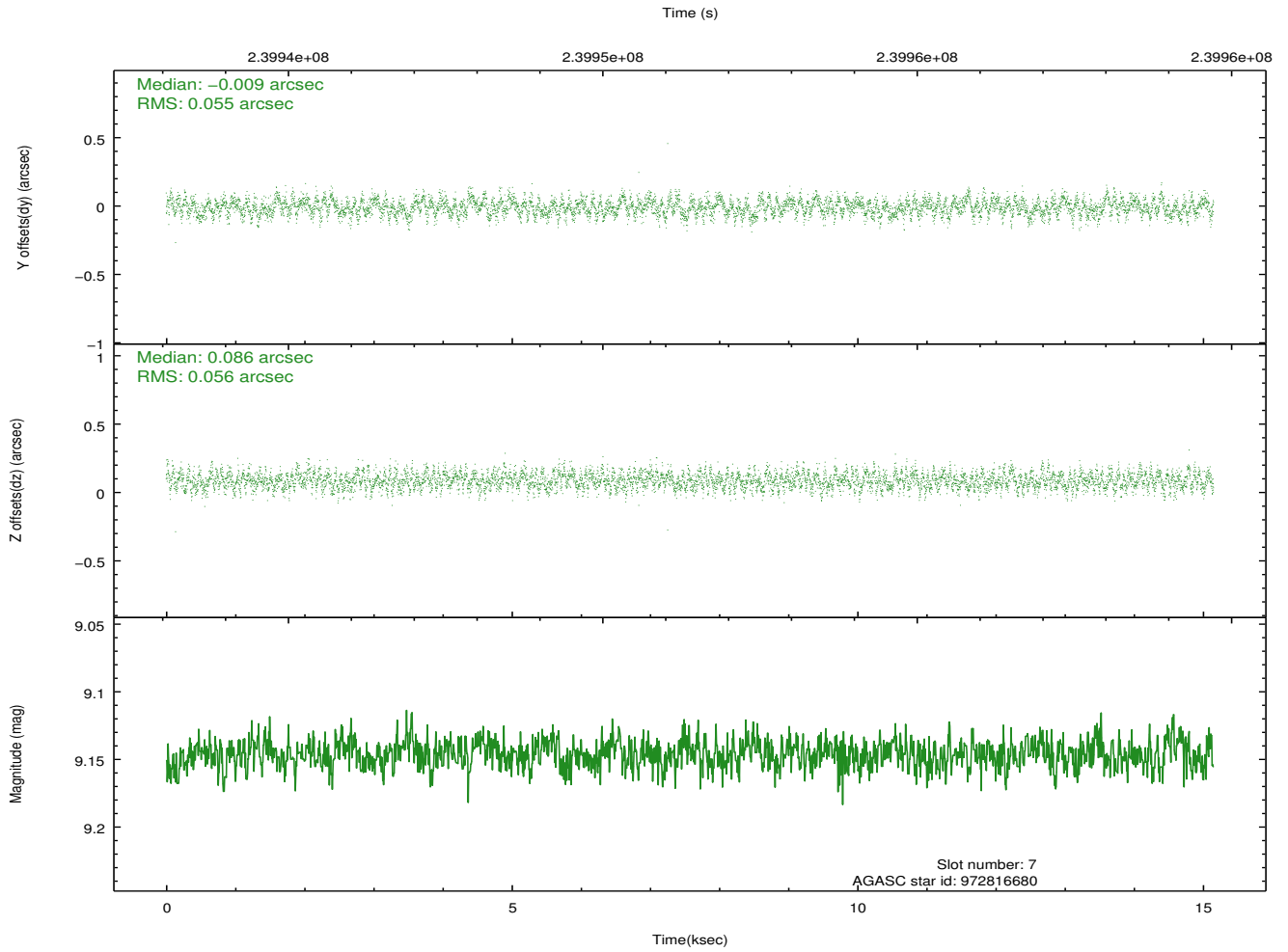
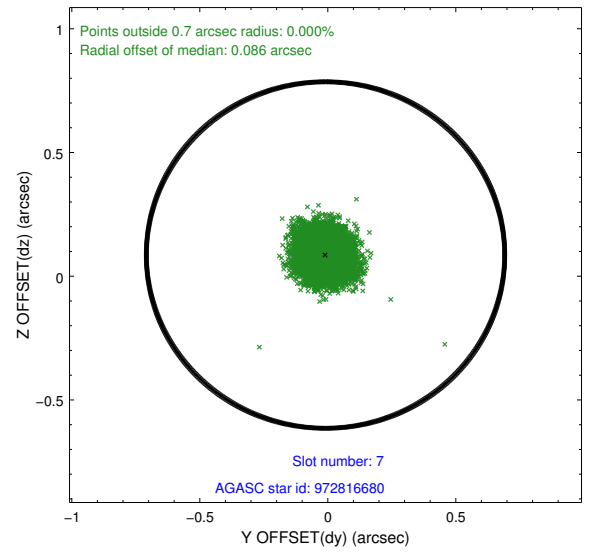
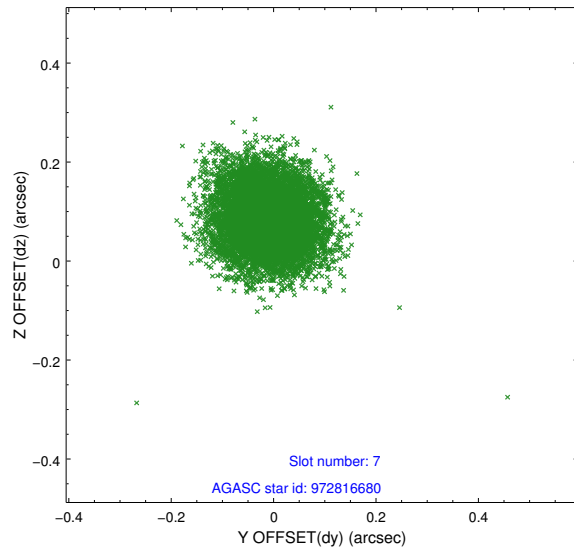


## 2.4.4 Slot 6



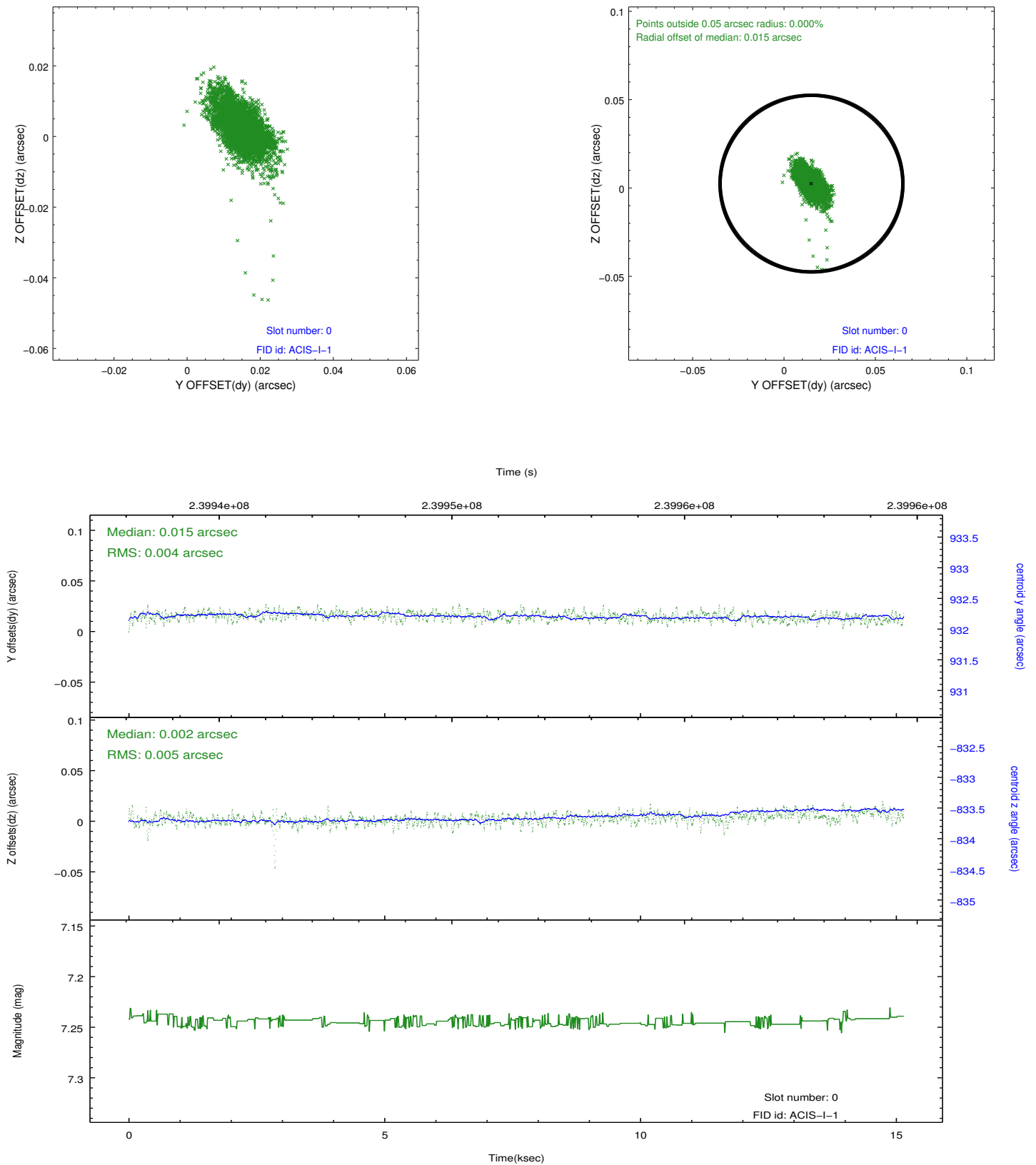


### 2.4.5 Slot 7

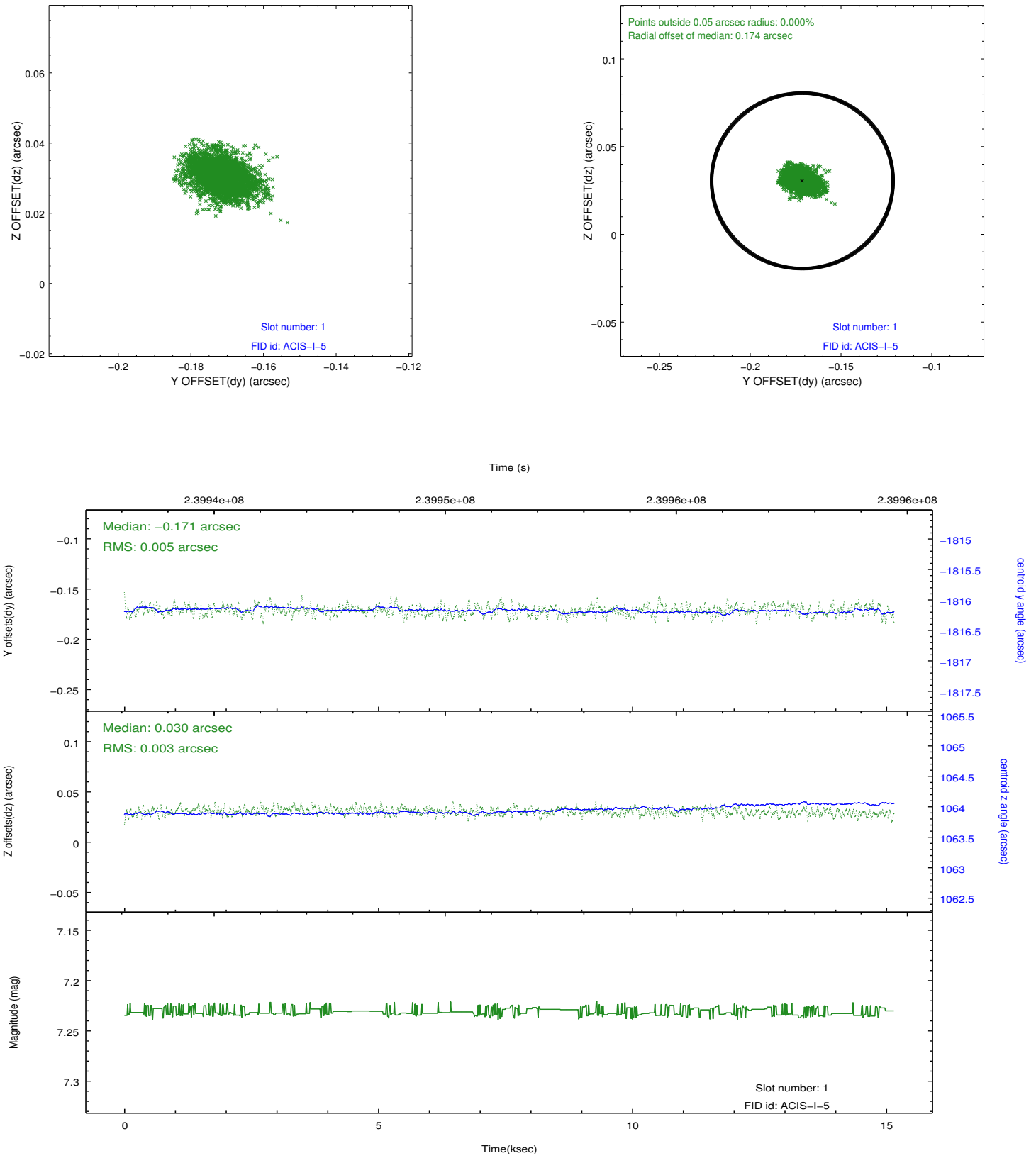


## 2.5 FID Slots

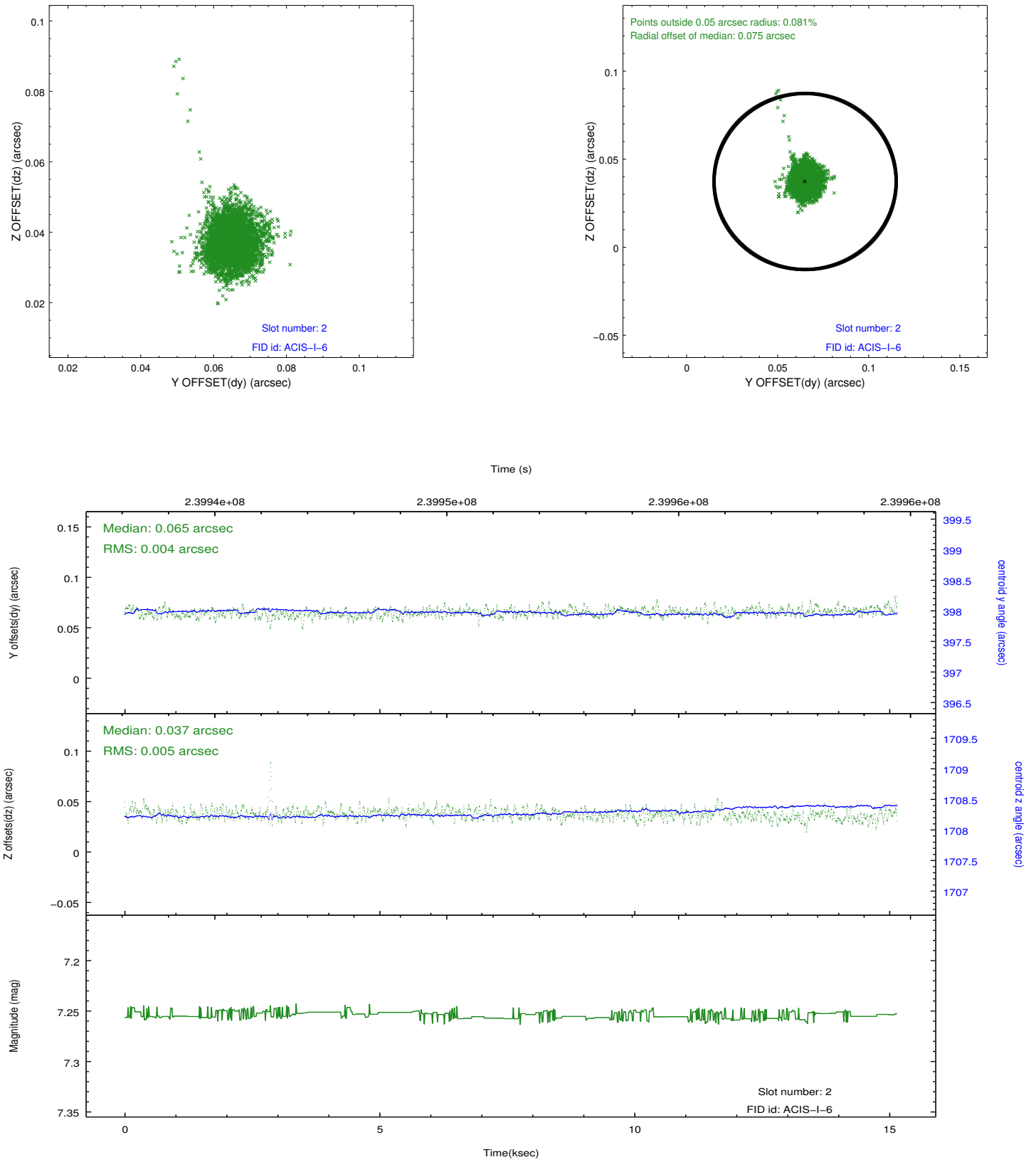
### 2.5.1 Slot 0



## 2.5.2 Slot 1



### 2.5.3 Slot 2



# A Summary

## A.1 Status

V&V Scientist	Jen Lauer
V&V Date (YYYY-MM-DD)	2013.01.23
V&V Edition	1
V&V Disposition and Status	OK
V&V Charge Time	15.1455589

## A.2 Comments

Joint Proposal: NRAO