

# V&V Reference Report

## L2 ASCDS Version : 7.6.7.1

Observation 5403 - L2 Version 002  
Chandra X-Ray Center

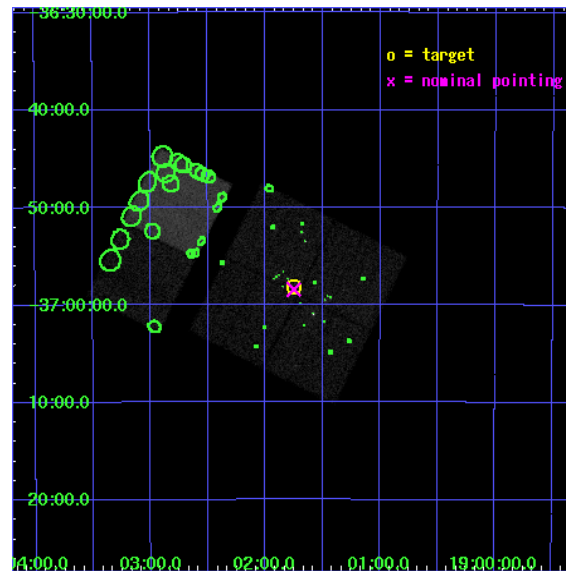
L2 Processing Date : Mar 19 2006

## Contents

<b>1</b>	<b>Front</b>	<b>2</b>
<b>2</b>	<b>OBI</b>	<b>3</b>
2.1	OBI . . . . .	3
2.1.1	Images . . . . .	3
2.1.2	Bias . . . . .	3
2.1.3	Parameters . . . . .	4
2.1.4	Events . . . . .	4
2.2	Compared Parameters . . . . .	5
2.3	Aspect . . . . .	6
2.4	Star Slots . . . . .	9
2.4.1	Slot 3 . . . . .	9
2.4.2	Slot 4 . . . . .	10
2.4.3	Slot 5 . . . . .	11
2.4.4	Slot 6 . . . . .	12
2.4.5	Slot 7 . . . . .	13
2.5	FID Slots . . . . .	14
2.5.1	Slot 0 . . . . .	14
2.5.2	Slot 1 . . . . .	15
2.5.3	Slot 2 . . . . .	16
<b>3</b>	<b>Point Sources</b>	<b>17</b>
<b>A</b>	<b>Summary</b>	<b>18</b>
A.1	Status . . . . .	18
A.2	Comments . . . . .	18

# 1 Front

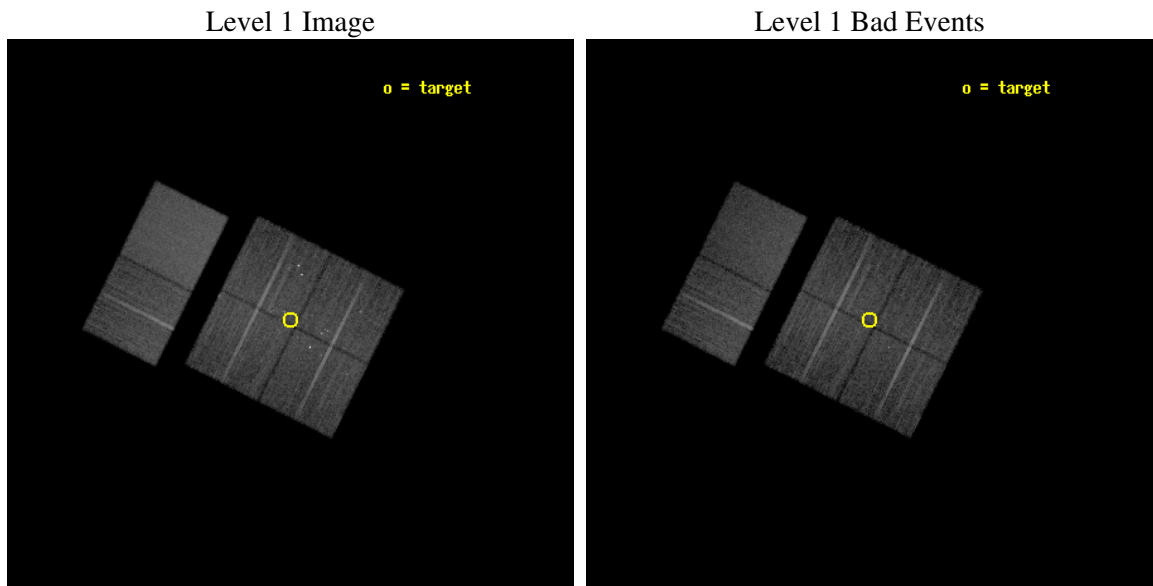
seq_num	200337
obs_id	5403
title	Simultaneous X-ray and Radio Monitoring of YSO Activity in the Coronet Cluster
observer	Jan Forbrich
object	Coronet Cluster
dtcycle	0
cycle	P
ra_targ	285.4375
dec_targ	-36.969167
ra_nom	285.4378261905
dec_nom	-36.973769053912
roll_nom	296.55891031587
revision	2
ontime	15145.558943391
livetime	14953.776756489
ontime0	15142.317943156
ontime1	15145.558943391
ontime2	15148.799943566
ontime3	15145.558943391
ontime6	15145.558953255
ontime7	15148.799943566
l2events	117074



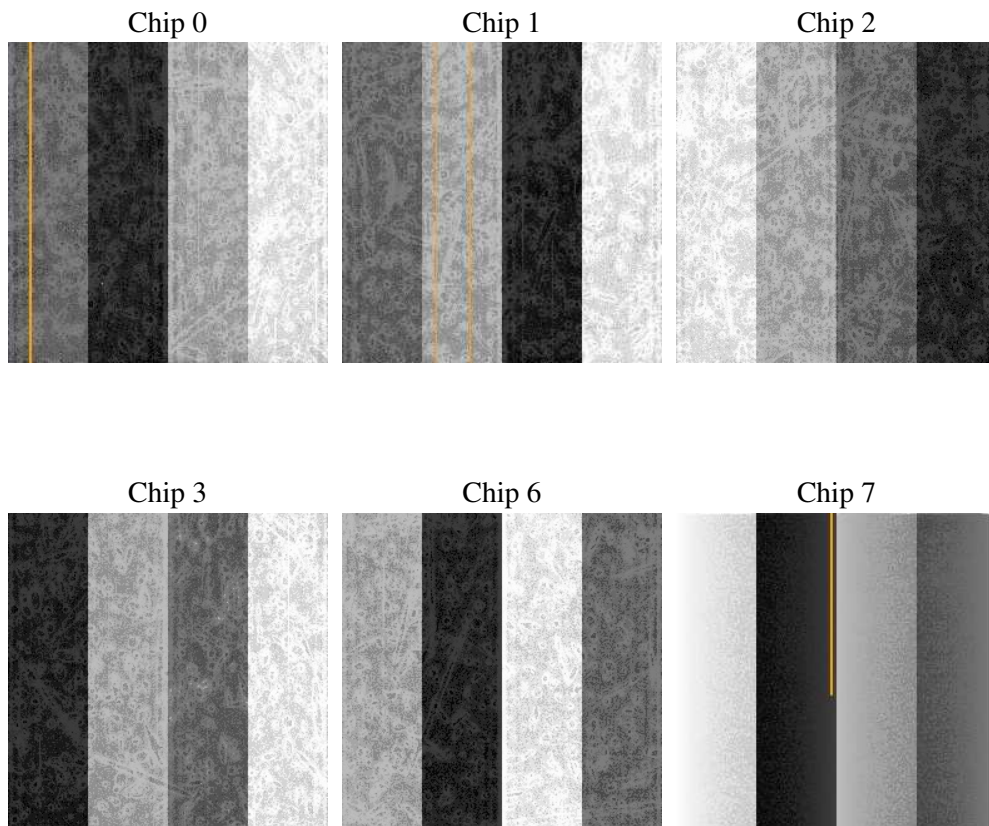
## 2 OBI

### 2.1 OBI

#### 2.1.1 Images



#### 2.1.2 Bias



### 2.1.3 Parameters

obi_num	0
ascdsver	7.6.7.1
caldbver	3.2.1
date	2006-03-19T04:00:28
revision	2

sched_exp_time	15000.000000
ontime	16175.888331562
ontime0	16172.647331327
ontime1	16175.888331562
ontime2	16179.129331738
ontime3	16175.888331562
ontime6	16175.888341427
ontime7	16179.129331738
l1events	710475

### 2.1.4 Events

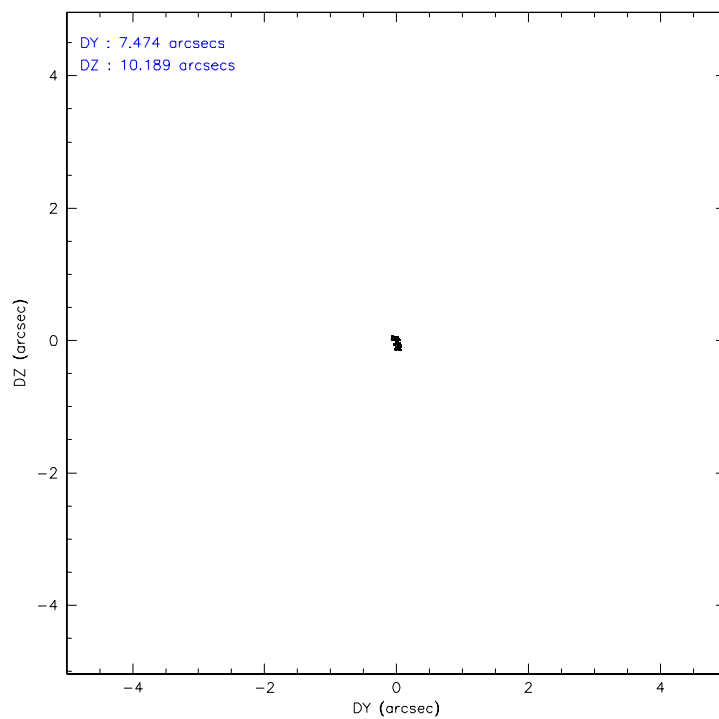
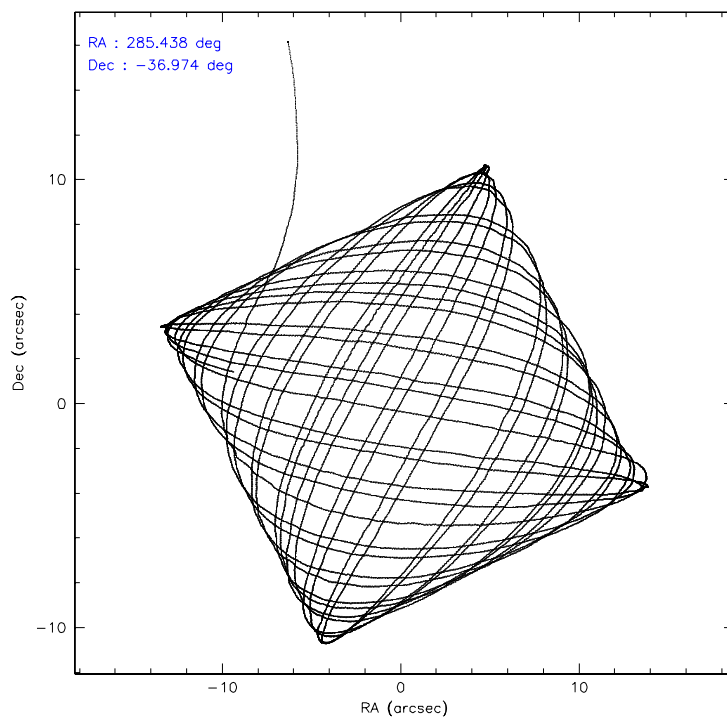
	ccd 0	ccd 1	ccd 2	ccd 3	ccd 6	ccd 7
level 1 events	106521	105873	111245	114090	117646	155100
rejected events	89525	91013	98818	98017	105269	100575
rejected %	84%	85%	88%	85%	89%	64%

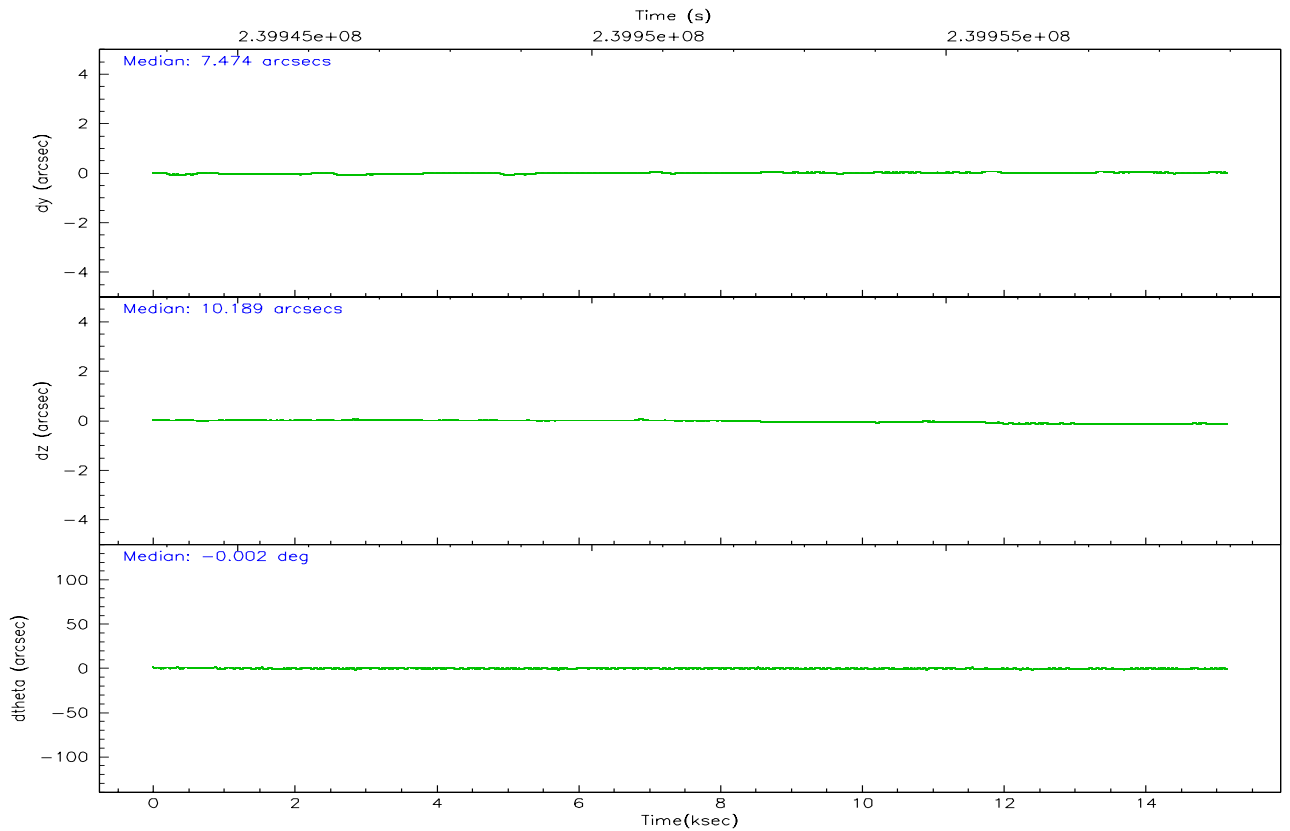
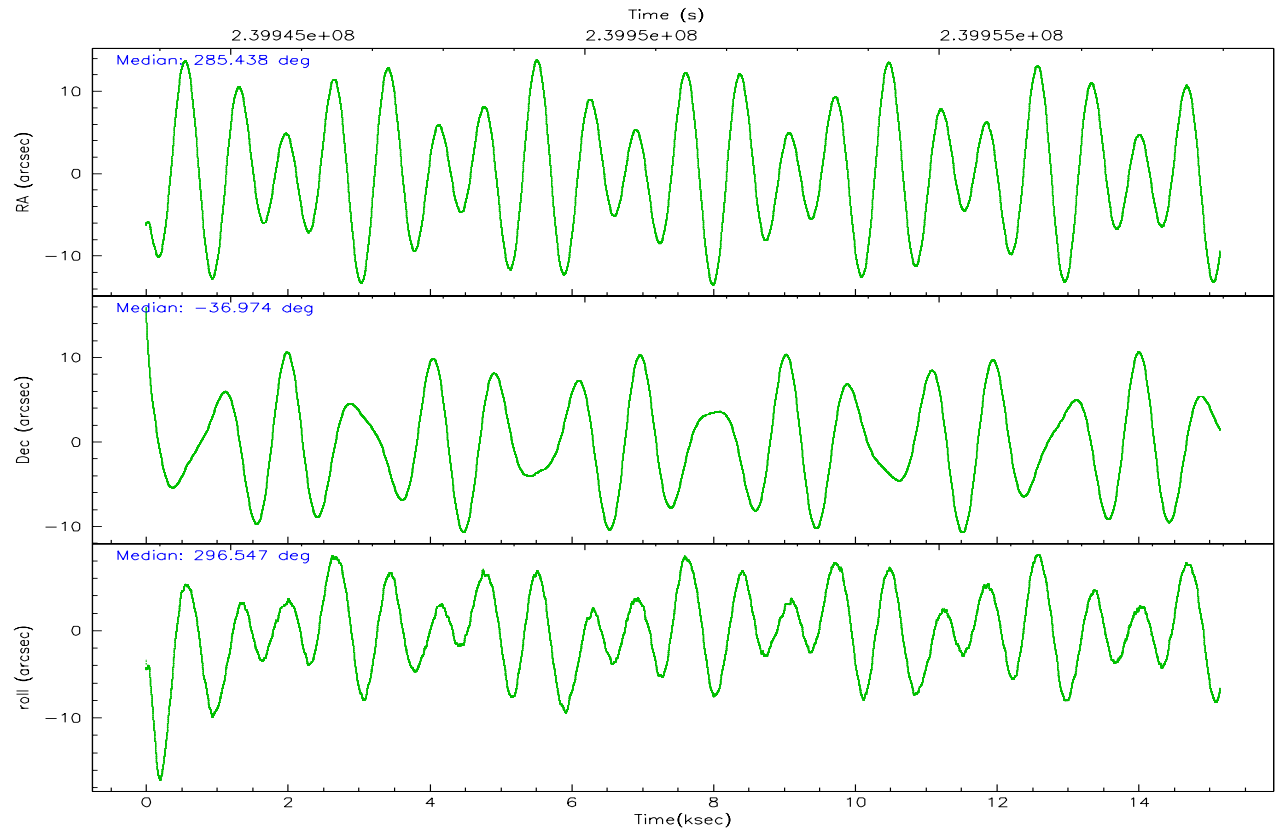
	ccd 0	ccd 1	ccd 2	ccd 3	ccd 6	ccd 7
grade 0 events	9155	6545	5805	8722	4885	3134
	8%	6%	5%	7%	4%	2%
grade 1 events	289	61	59	110	45	85
	0%	0%	0%	0%	0%	0%
grade 2 events	3362	3419	2767	3057	3026	14334
	3%	3%	2%	2%	2%	9%
grade 3 events	1500	1460	1210	1377	1262	2861
	1%	1%	1%	1%	1%	1%
grade 4 events	1386	1401	1266	1380	1288	2728
	1%	1%	1%	1%	1%	1%
grade 5 events	4643	4818	4378	5169	5458	9939
	4%	4%	3%	4%	4%	6%
grade 6 events	2542	2983	2217	2475	2821	35183
	2%	2%	1%	2%	2%	22%
grade 7 events	83644	85186	93543	91800	98861	86836
	78%	80%	84%	80%	84%	55%

## 2.2 Compared Parameters

Parameter	Planned	Actual	Parameter	Planned	Actual
Instrument	ACIS	ACIS	Obspar format version number	6	6
Detector	ACIS-012367	ACIS-012367	Obspar file type	PREDICTED	ACTUAL
Grating	NONE	NONE	Obspar update status	NONE	UPDATED
Data mode	FAINT	FAINT	On-chip summing requested	N	N
Observation mode	POINTING	POINTING	Subarray requested	NONE	NONE
Pointing RA	285.409198	285.4378261905013	Alternating exposures requested	N	N
Pointing Dec	-36.958793	-36.97376905391163	Primary exposure time	0.000000	3.2
Pointing Roll	296.333004	296.5589103158655			
SIM focus pos (mm)	-0.782348	-0.7809083437167272			
SIM defocus (mm)	0	0.001439871863259334			
SIM translation stage pos (mm)	-233.592463	-233.5874344608287			
SIM translation stage offset (mm)	0	-0.005018542100998502			
Observation start time	239943956.184000	239942332.70163			
Observation start date	2005-08-09T03:04:52	2005-08-09T02:38:52			
Observation end time	239958956.184000	239959330.27741			
Observation end date	2005-08-09T07:14:52	2005-08-09T07:22:10			
Read mode	TIMED	TIMED			

## 2.3 Aspect





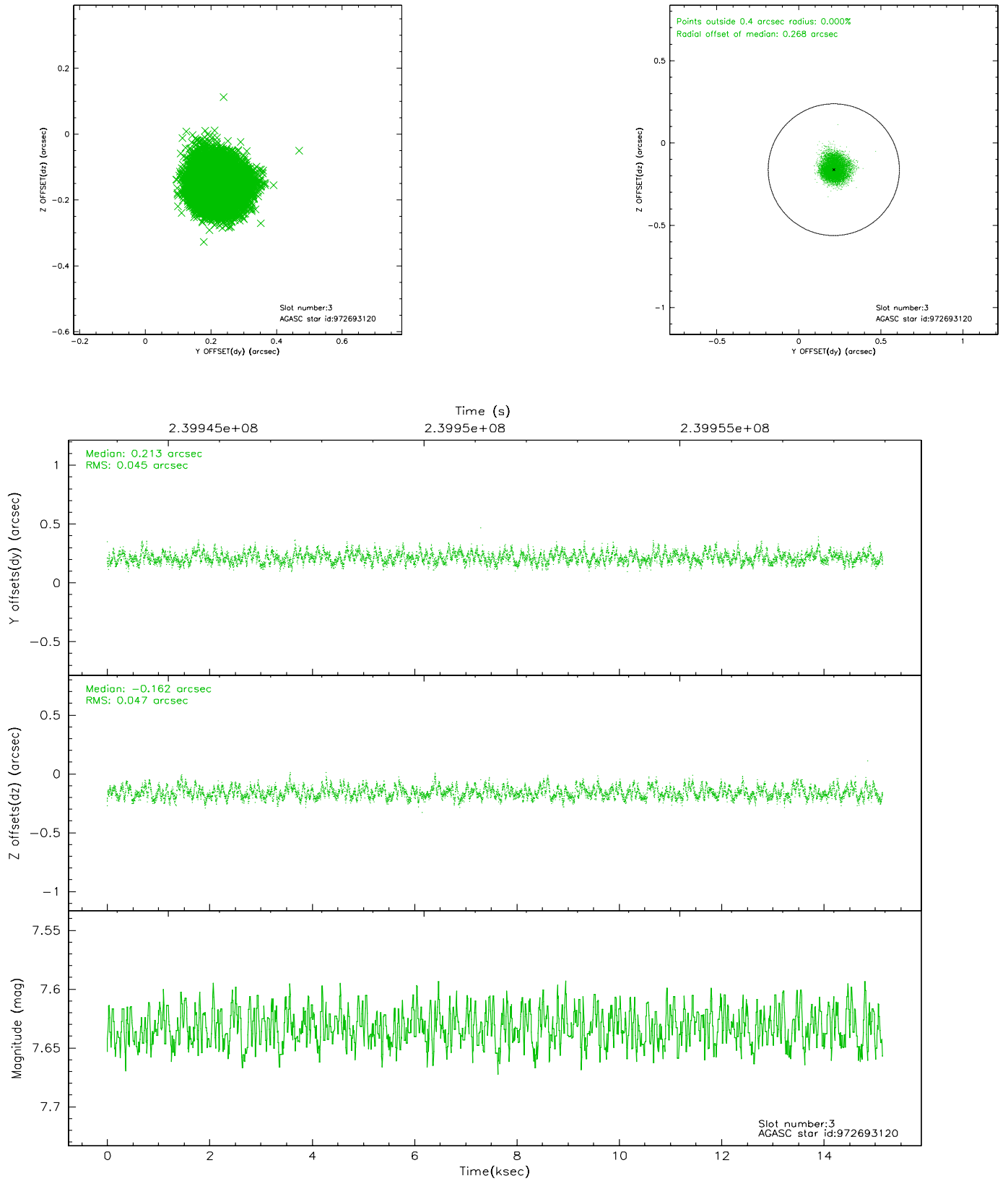
### Slot Statistics

slot	status	id	mag	n_pts	med_dy	med_dz	dr1	dr2	ra	dec	mean_y	mean_z
0	FID	ACIS-I-1	7.24	3695	-0.005	0.030	0.006	0.012	0.000000	0.000000	932.19	-833.61
1	FID	ACIS-I-5	7.23	3697	-0.141	0.023	0.006	0.010	0.000000	0.000000	-1815.89	1063.72
2	FID	ACIS-I-6	7.26	3695	0.055	0.018	0.007	0.011	0.000000	0.000000	397.47	1708.56
3	GUIDE	972693120	7.63	7393	0.213	-0.162	0.070	0.107	285.412210	-36.890704	-215.23	116.43
4	GUIDE	972694056	7.03	7393	-0.103	-0.016	0.043	0.071	285.682787	-36.657985	-619.00	1188.00
5	GUIDE	1037567144	8.75	7389	-0.022	0.037	0.070	0.110	284.940440	-37.605390	1496.92	-2231.64
6	GUIDE	972689192	8.91	7389	-0.080	0.054	0.083	0.135	284.589186	-37.133486	-470.24	-2392.91
7	GUIDE	972816680	9.15	7389	-0.009	0.086	0.084	0.132	286.054324	-36.904693	654.88	1748.02

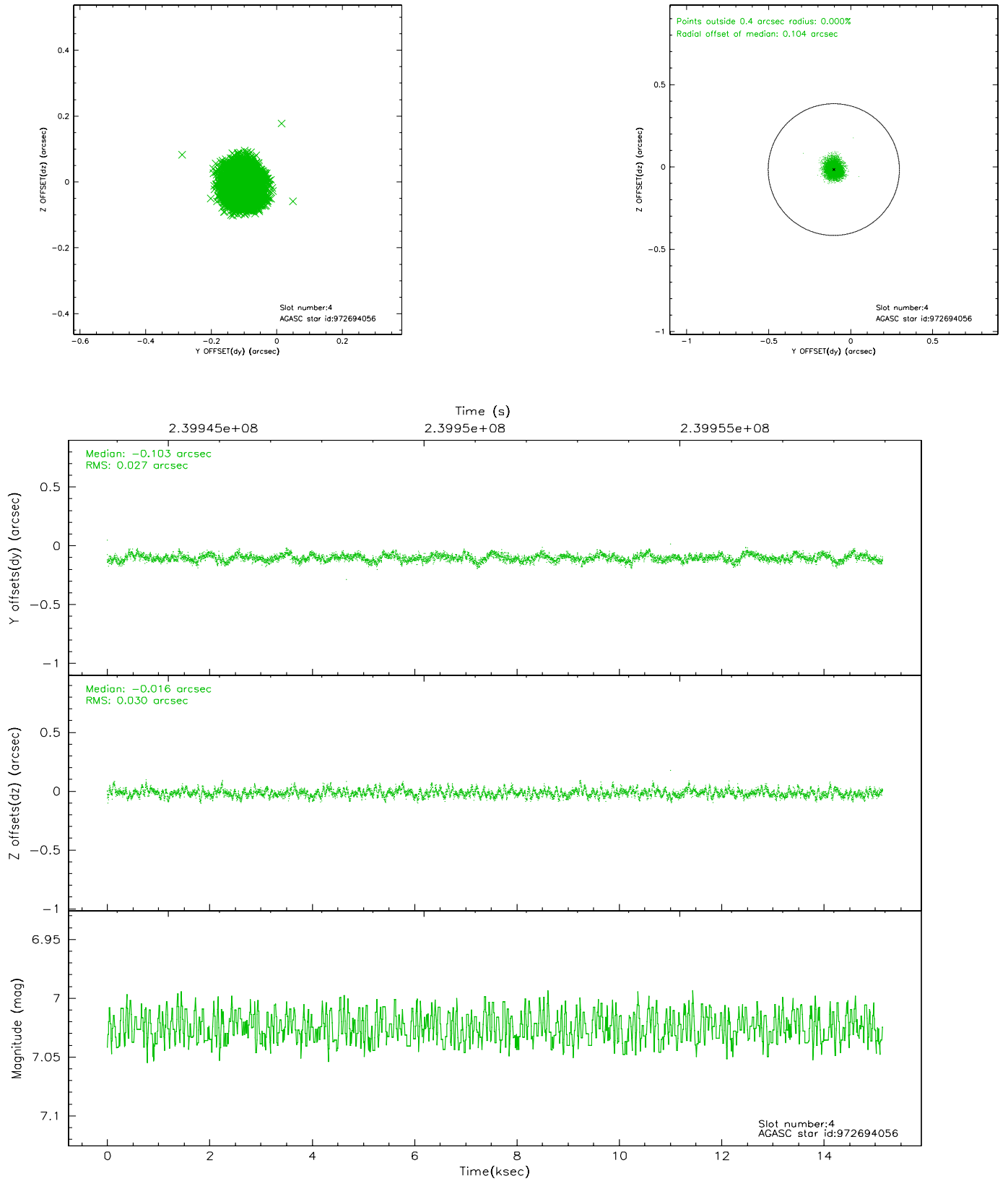


## 2.4 Star Slots

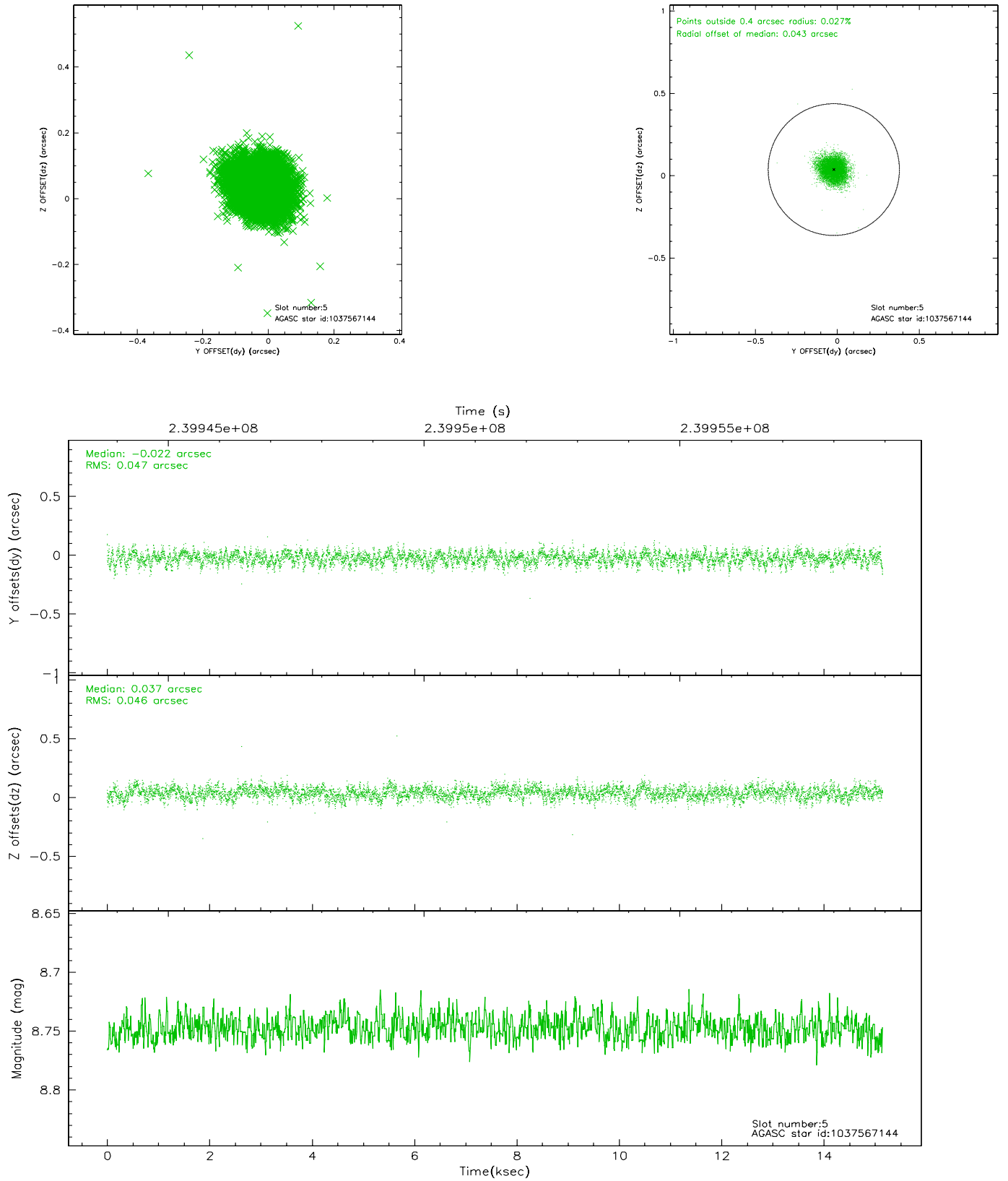
### 2.4.1 Slot 3



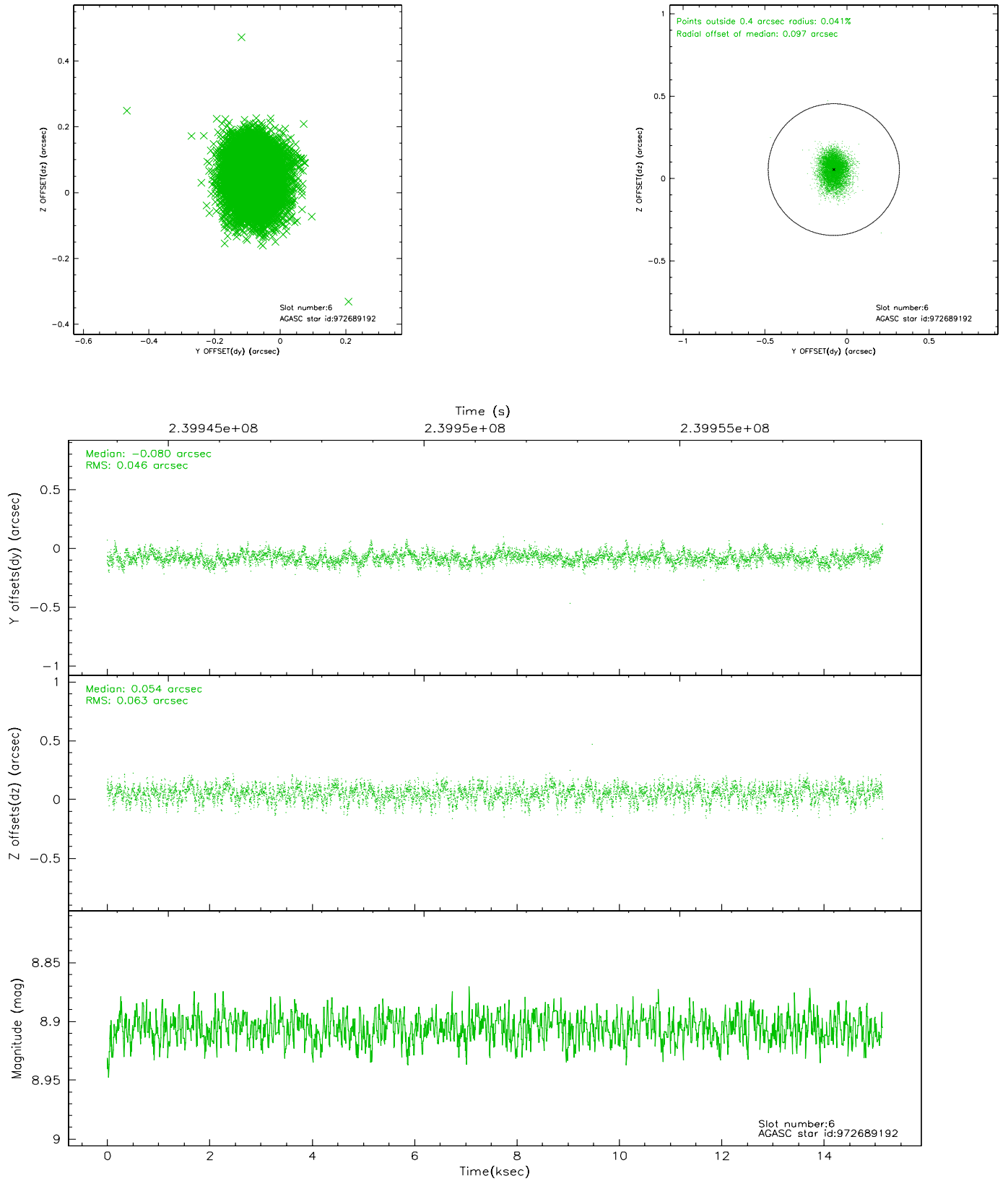
## 2.4.2 Slot 4



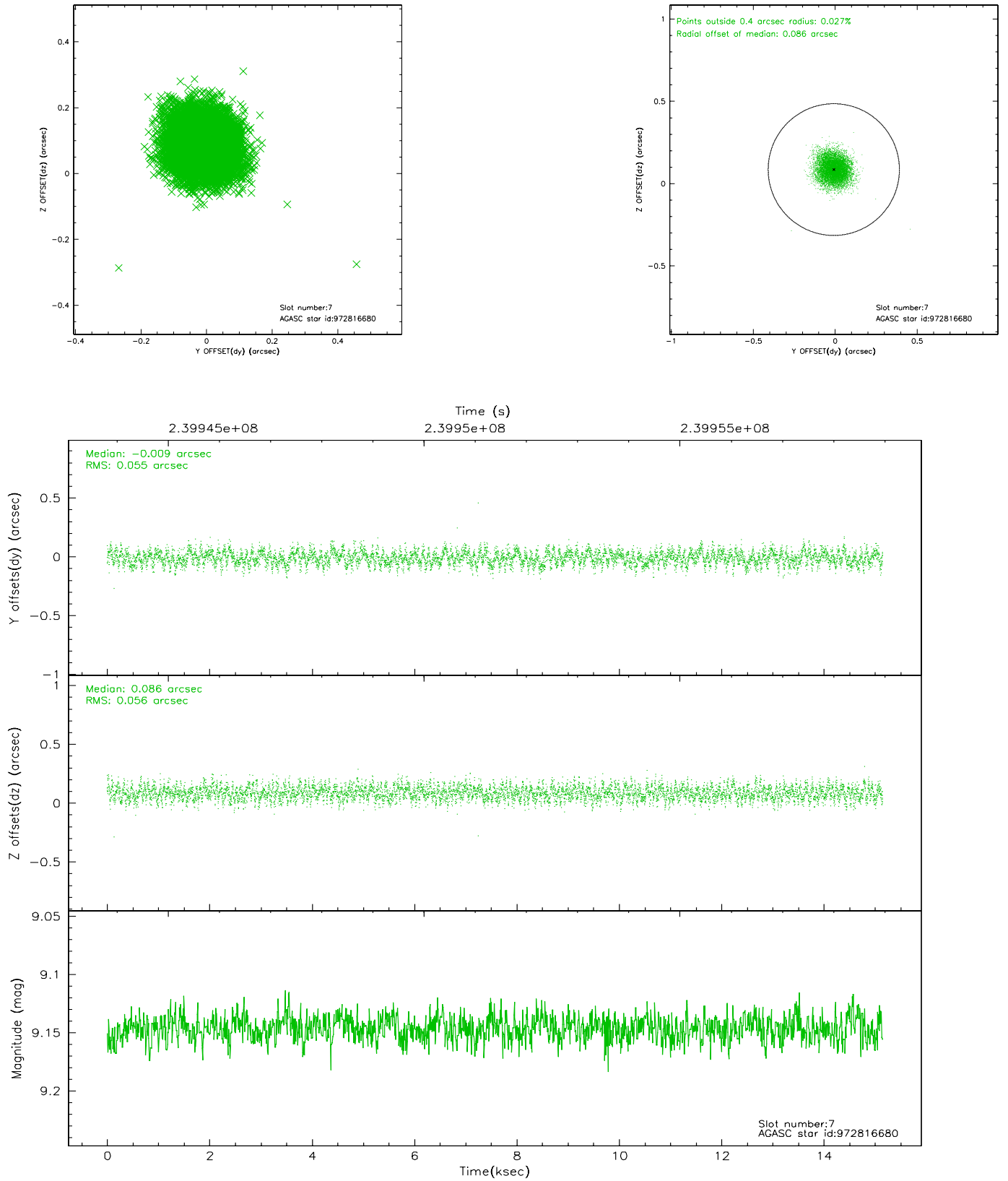
### 2.4.3 Slot 5



## 2.4.4 Slot 6

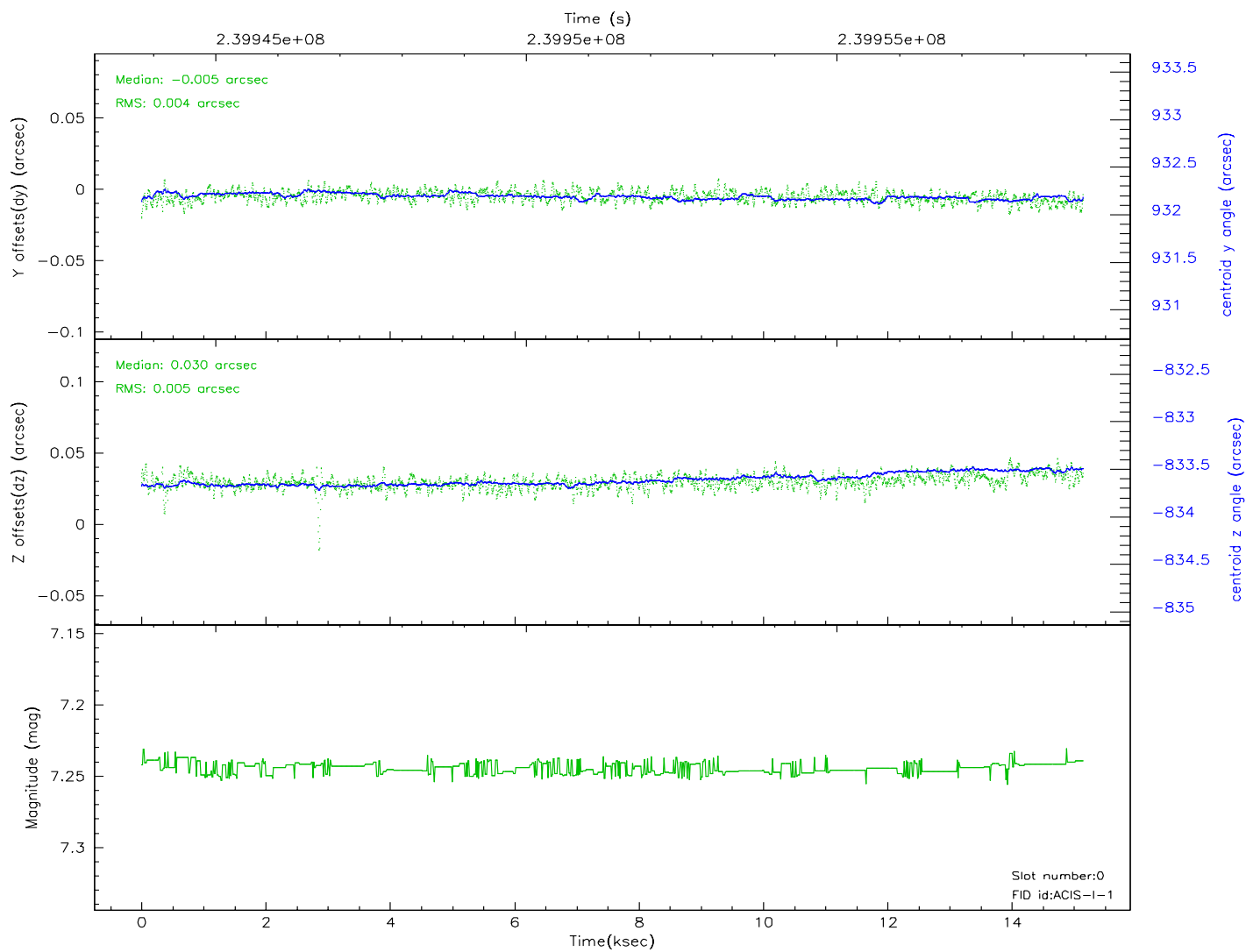
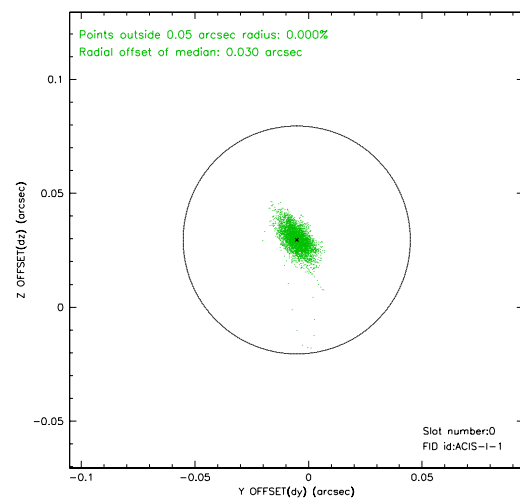
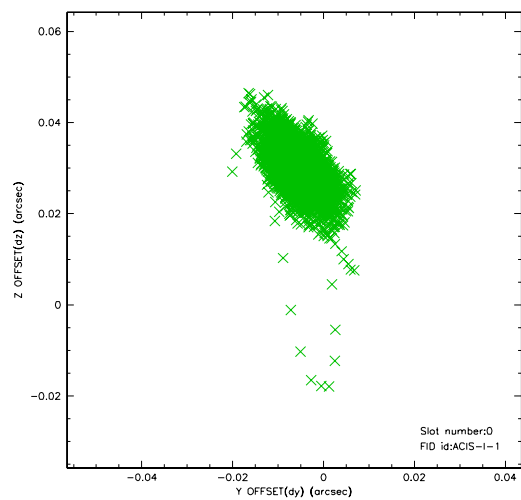


## 2.4.5 Slot 7

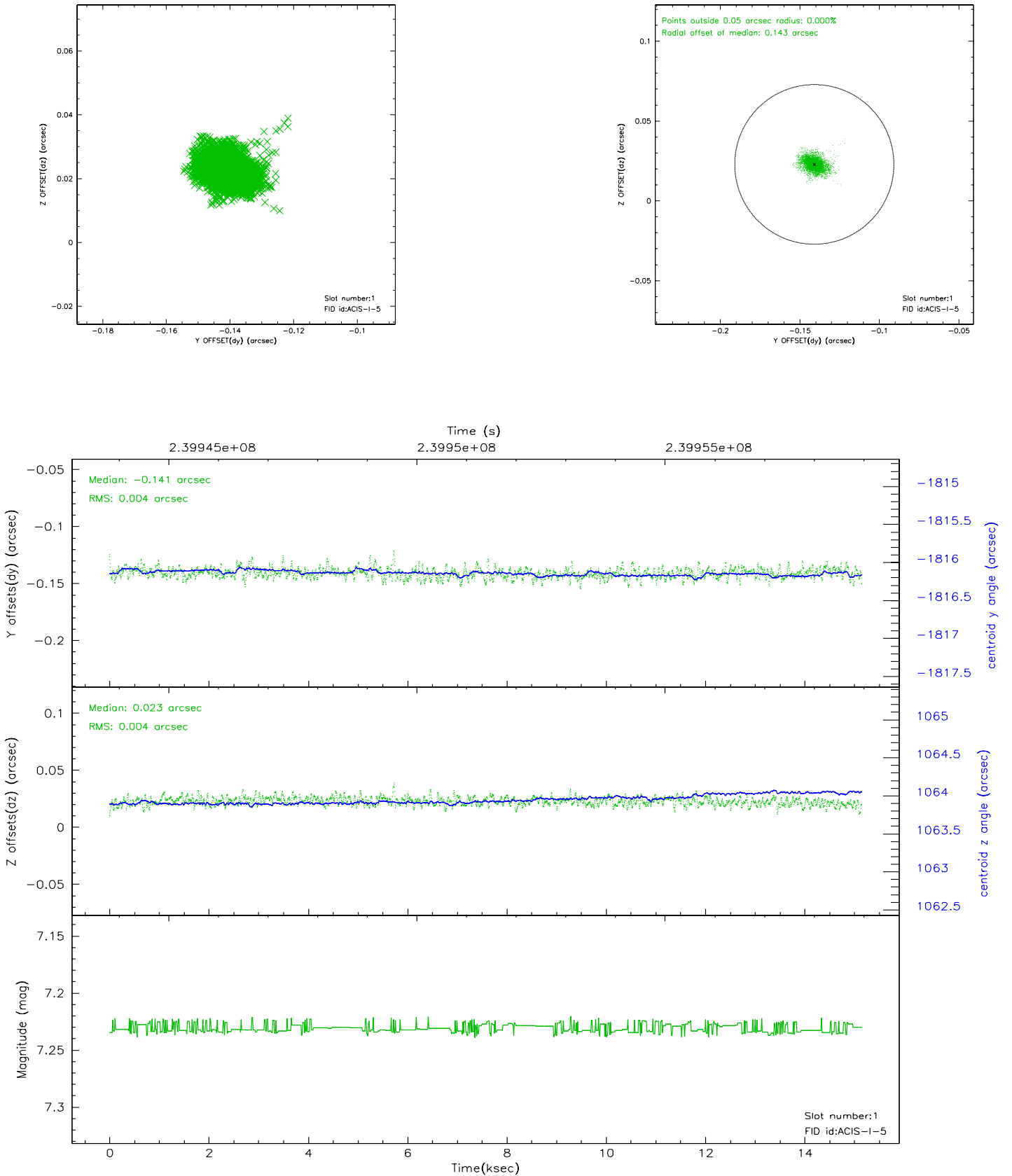


## 2.5 FID Slots

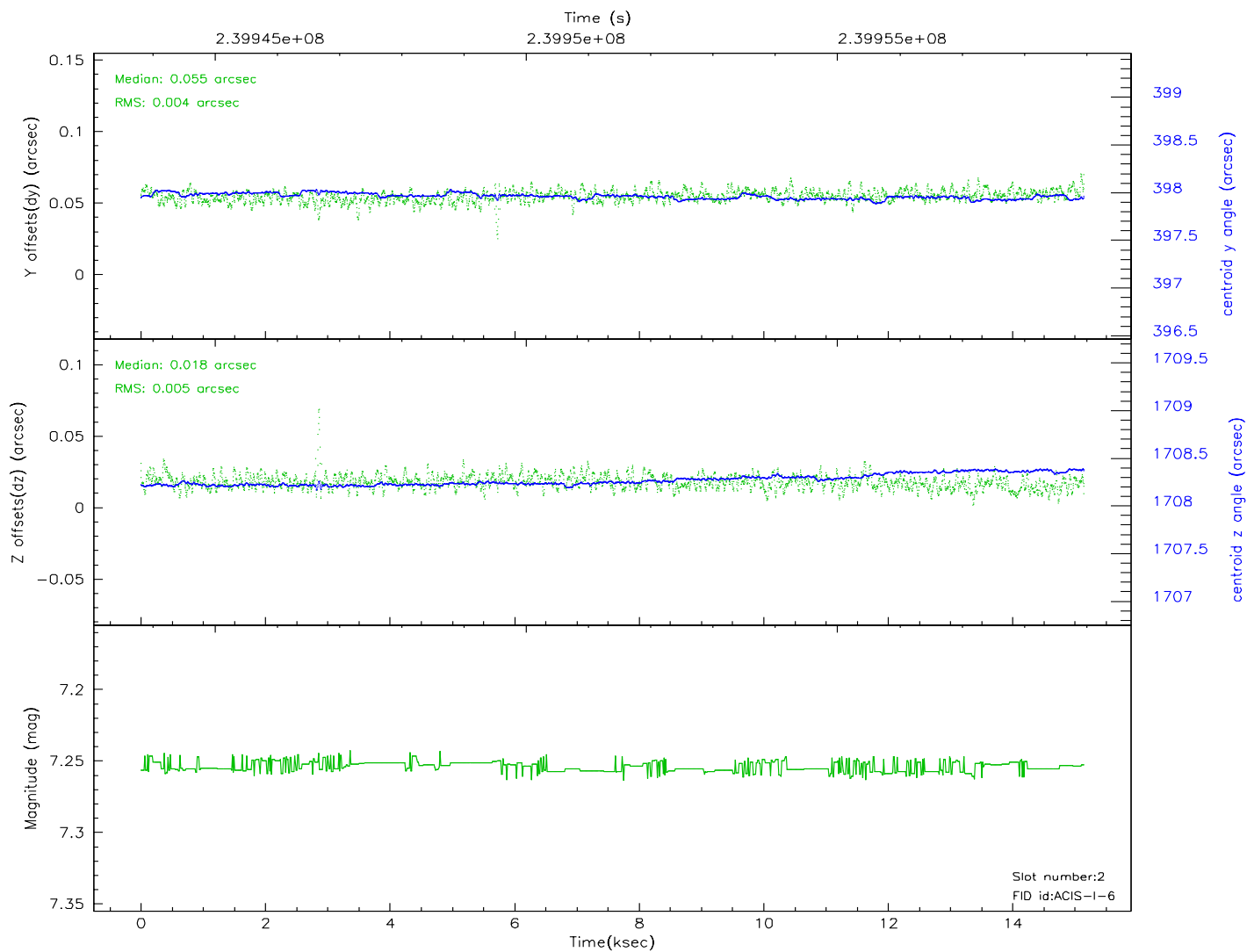
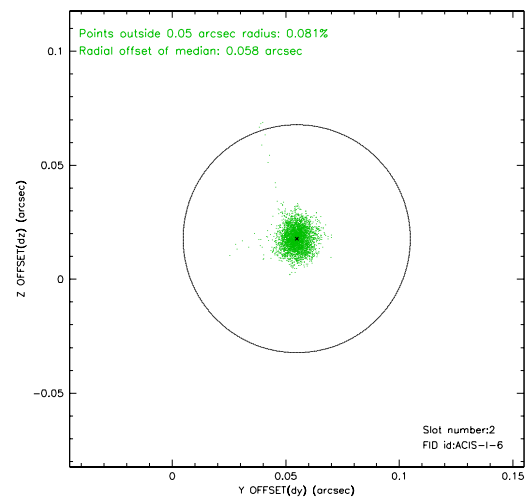
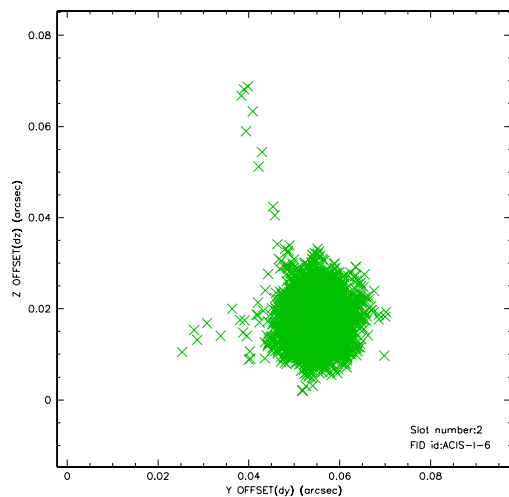
### 2.5.1 Slot 0



## 2.5.2 Slot 1

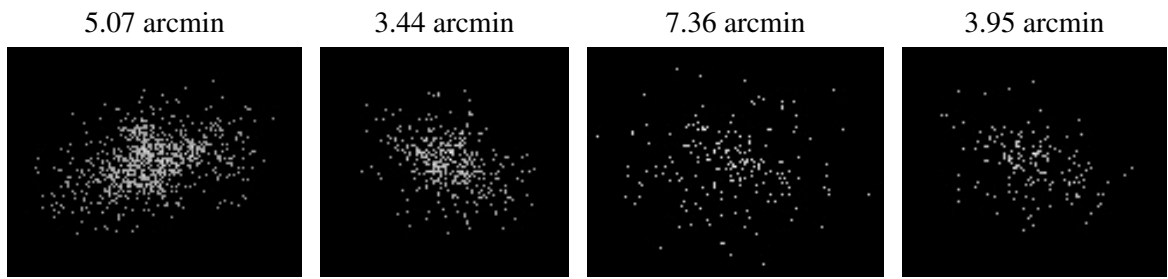


### 2.5.3 Slot 2





### 3 Point Sources



# A Summary

## A.1 Status

V&V Scientist	Jen Lauer
V&V Date (YYYY-MM-DD)	2006.04.05
V&V Edition	1
V&V Disposition and Status	OK
V&V Charge Time	15.1455589

## A.2 Comments

Charge time:

New charge time is less than charge time used in previously distributed version

NEW CHARGE TIME = 15.145559 ks, 1 Obis

PREVIOUS CHARGE TIME = 16.175880 ks, 1 Obis.

=====

ACIS focal plane temp can be seen gradually declining after a spike during a previous observation. Calibration may be affected. The focal plane temp is above calibration limits for the first 6ksec of the observation.