

V&V Reference Report

L2 ASCDS Version : 7.6.7.1

Observation 5393 - L2 Version 002
Chandra X-Ray Center

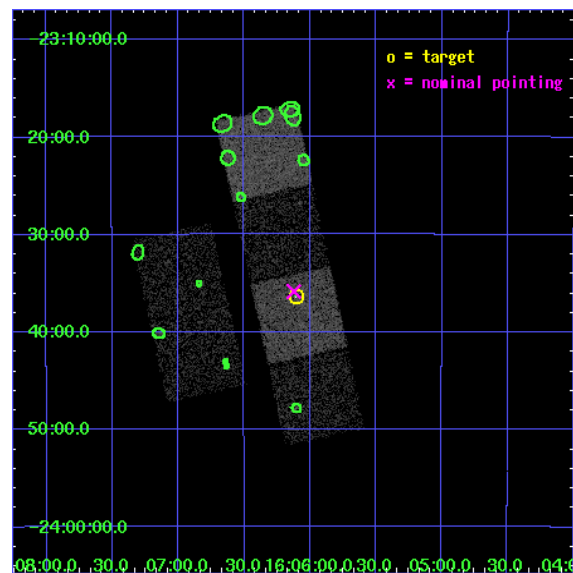
L2 Processing Date : Mar 17 2006

Contents

1	Front	2
2	OBI	3
2.1	OBI	3
2.1.1	Images	3
2.1.2	Bias	3
2.1.3	Parameters	4
2.1.4	Events	4
2.2	Compared Parameters	5
2.3	Aspect	6
2.4	Star Slots	9
2.4.1	Slot 3	9
2.4.2	Slot 4	10
2.4.3	Slot 5	11
2.4.4	Slot 6	12
2.4.5	Slot 7	13
2.5	FID Slots	14
2.5.1	Slot 0	14
2.5.2	Slot 1	15
2.5.3	Slot 2	16
3	Point Sources	17
A	Summary	18
A.1	Status	18
A.2	Comments	18

1 Front

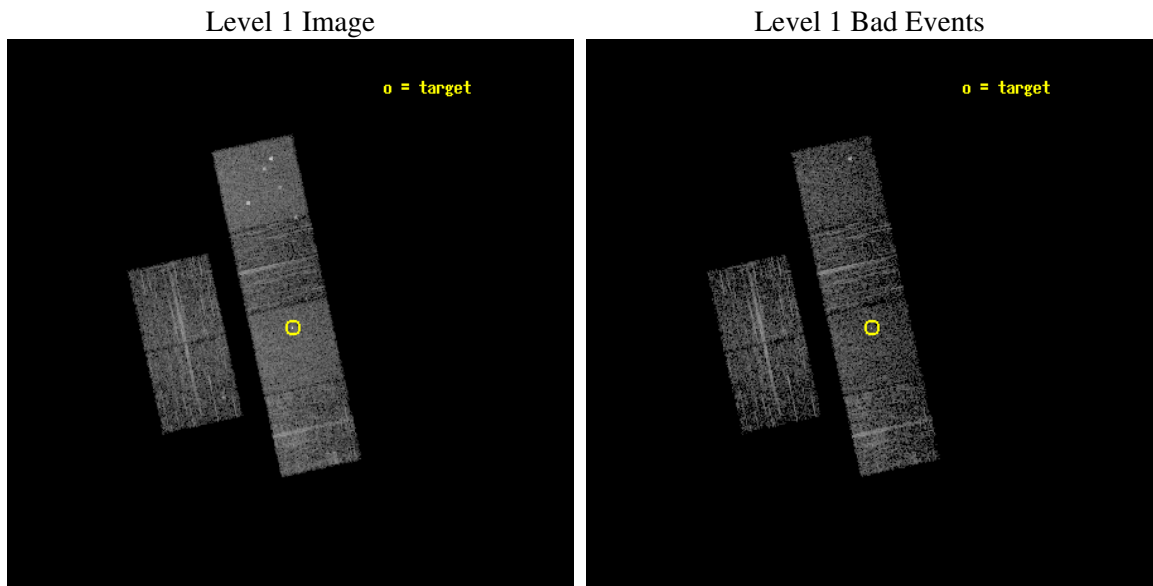
seq_num	200328
obs_id	5393
title	The puzzle of X-ray emission from magnetic stars without convective envelopes
observer	Prof. J rgen Schmitt
object	HD 144334
dtcycle	0
cycle	P
ra_targ	241.526667
dec_targ	-23.606306
ra_nom	241.53063739316
dec_nom	-23.597562723873
roll_nom	77.71027053952
revision	2
ontime	2953.599988997
livetime	2916.1997274919
ontime2	2953.599988997
ontime3	2953.599988997
ontime5	2953.599988997
ontime6	2953.599988997
ontime7	2953.599988997
ontime8	2953.599988997
l2events	36016



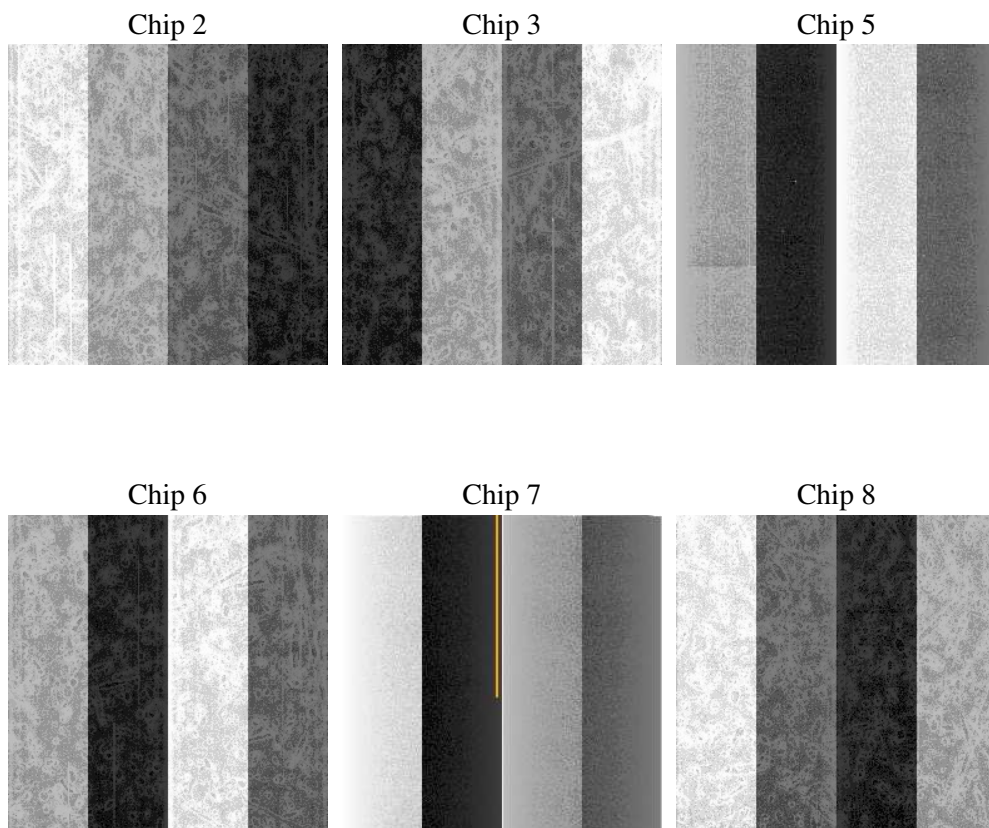
2 OBI

2.1 OBI

2.1.1 Images



2.1.2 Bias



2.1.3 Parameters

obi_num	0
ascdsver	7.6.7.1
caldsver	3.2.1
date	2006-03-17T12:23:14
revision	2

sched_exp_time	3000.000000
ontime	2959.0443445444
ontime2	2959.0443445444
ontime3	2959.0443445444
ontime5	2959.0443644524
ontime6	2959.0443445444
ontime7	2959.0443445444
ontime8	2959.0443445444
l1events	160896

2.1.4 Events

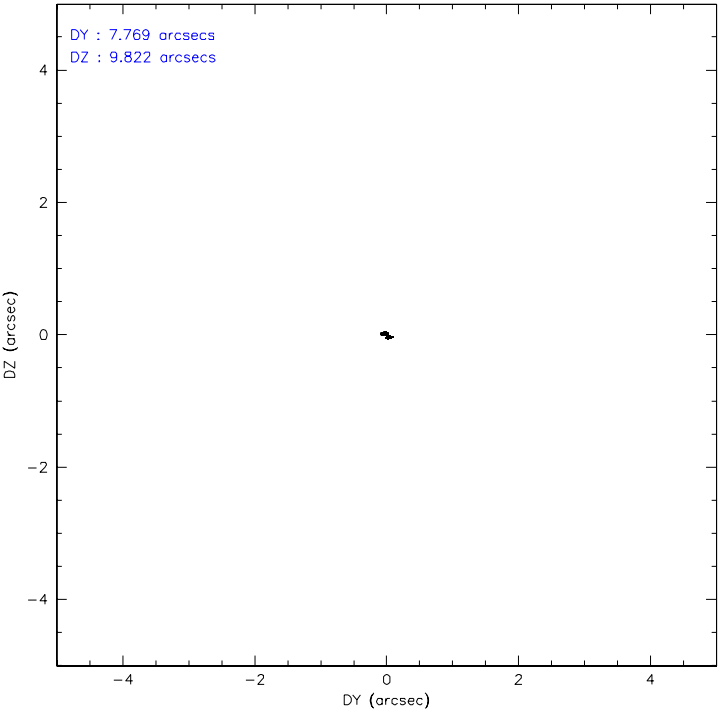
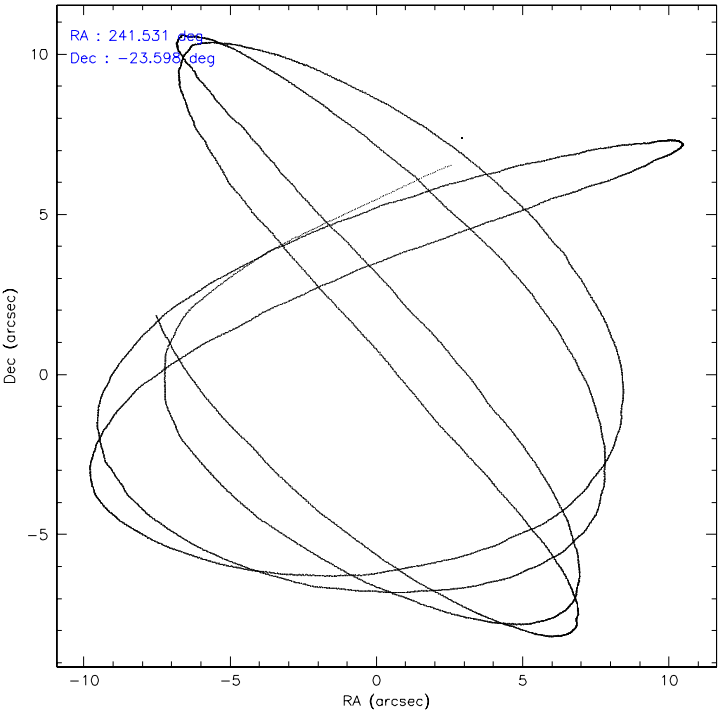
	ccd 2	ccd 3	ccd 5	ccd 6	ccd 7	ccd 8
level 1 events	23818	20764	34596	22891	30523	28304
rejected events	20984	18000	18704	20082	18341	22227
rejected %	88%	86%	54%	87%	60%	78%

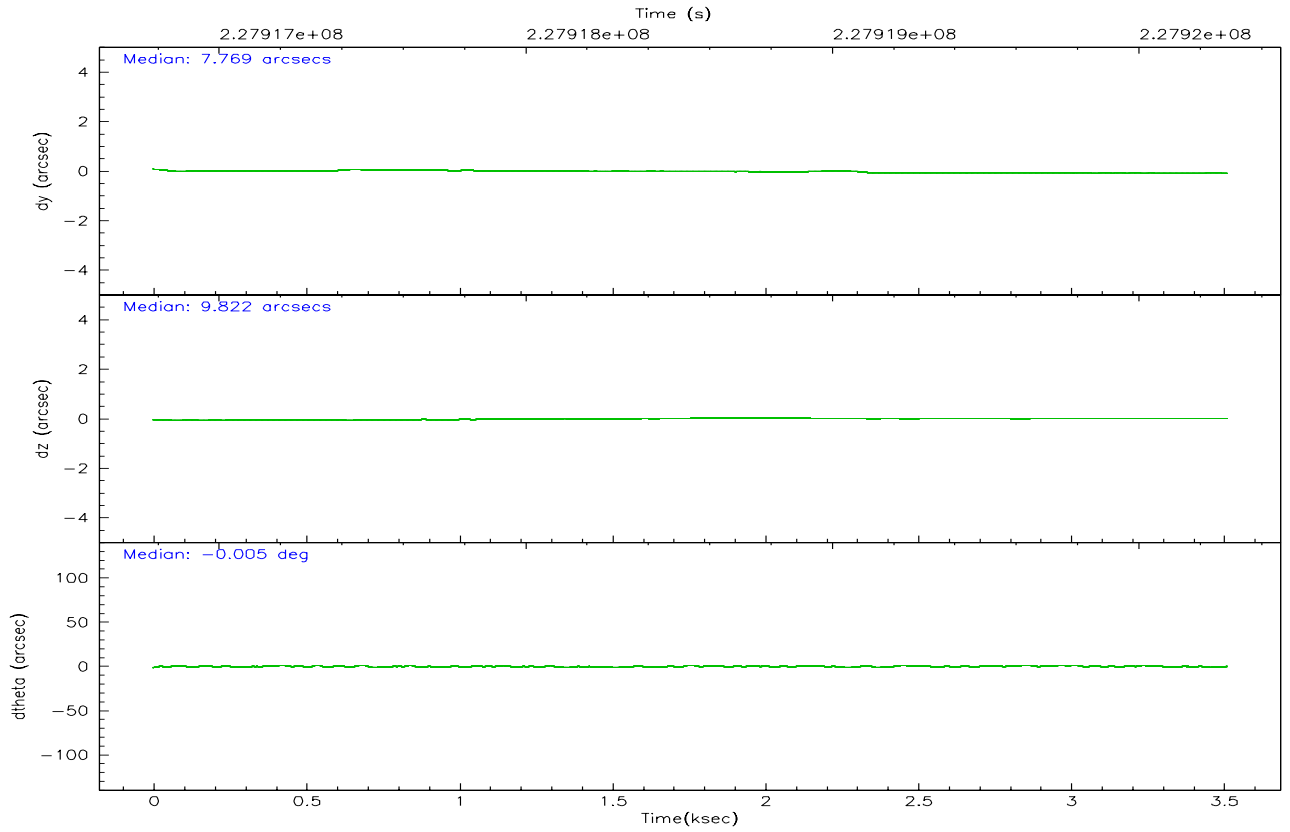
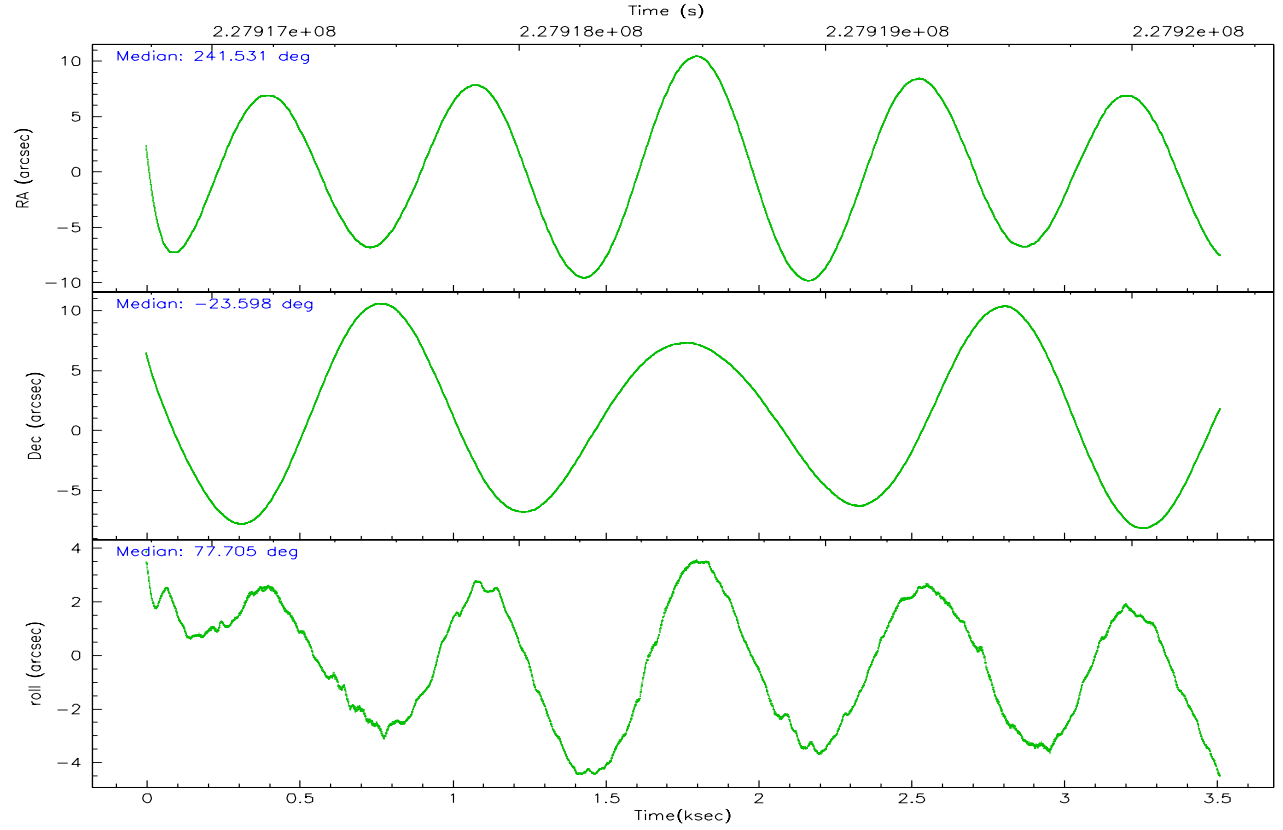
	ccd 2	ccd 3	ccd 5	ccd 6	ccd 7	ccd 8
grade 0 events	1273	1349	1897	1199	851	1985
	5%	6%	5%	5%	2%	7%
grade 1 events	14	12	45	8	29	13
	0%	0%	0%	0%	0%	0%
grade 2 events	587	509	4886	551	2963	1297
	2%	2%	14%	2%	9%	4%
grade 3 events	261	272	345	250	655	623
	1%	1%	0%	1%	2%	2%
grade 4 events	252	245	325	264	611	577
	1%	1%	0%	1%	2%	2%
grade 5 events	859	995	1693	1047	1993	1355
	3%	4%	4%	4%	6%	4%
grade 6 events	466	393	8466	549	7137	1623
	1%	1%	24%	2%	23%	5%
grade 7 events	20106	16989	16939	19023	16284	20831
	84%	81%	48%	83%	53%	73%

2.2 Compared Parameters

Parameter	Planned	Actual	Parameter	Planned	Actual
Instrument	ACIS	ACIS	Obspar format version number	6	6
Detector	ACIS-235678	ACIS-235678	Obspar file type	PREDICTED	ACTUAL
Grating	NONE	NONE	Obspar update status	NONE	UPDATED
Data mode	FAINT	FAINT	On-chip summing requested	N	N
Observation mode	POINTING	POINTING	Subarray requested	NONE	NONE
Pointing RA	241.540117	241.5306373931618	Alternating exposures requested	N	N
Pointing Dec	-23.623191	-23.59756272387284	Primary exposure time	0.000000	3.2
Pointing Roll	77.557436	77.71027053952025			
SIM focus pos (mm)	-0.684267	-0.6828225247311905			
SIM defocus (mm)	0	0.001444936568705701			
SIM translation stage pos (mm)	-190.132523	-190.145094680475			
SIM translation stage offset (mm)	0	0.01257209746719923			
Observation start time	227917292.184000	227916166.54067			
Observation start date	2005-03-22T22:20:28	2005-03-22T22:02:46			
Observation end time	227920292.184000	227920489.99086			
Observation end date	2005-03-22T23:10:28	2005-03-22T23:14:49			
Read mode	TIMED	TIMED			

2.3 Aspect



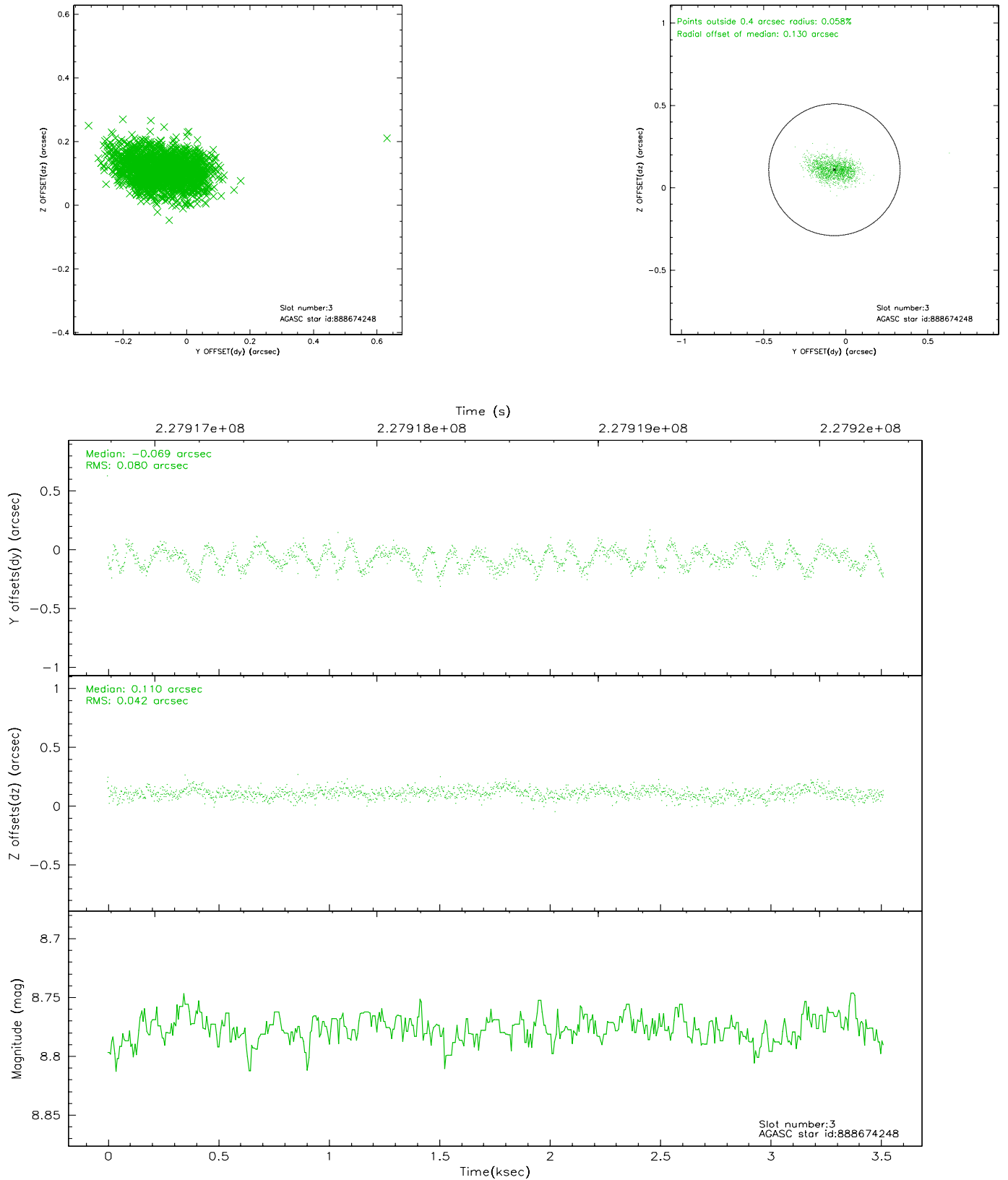


Slot Statistics

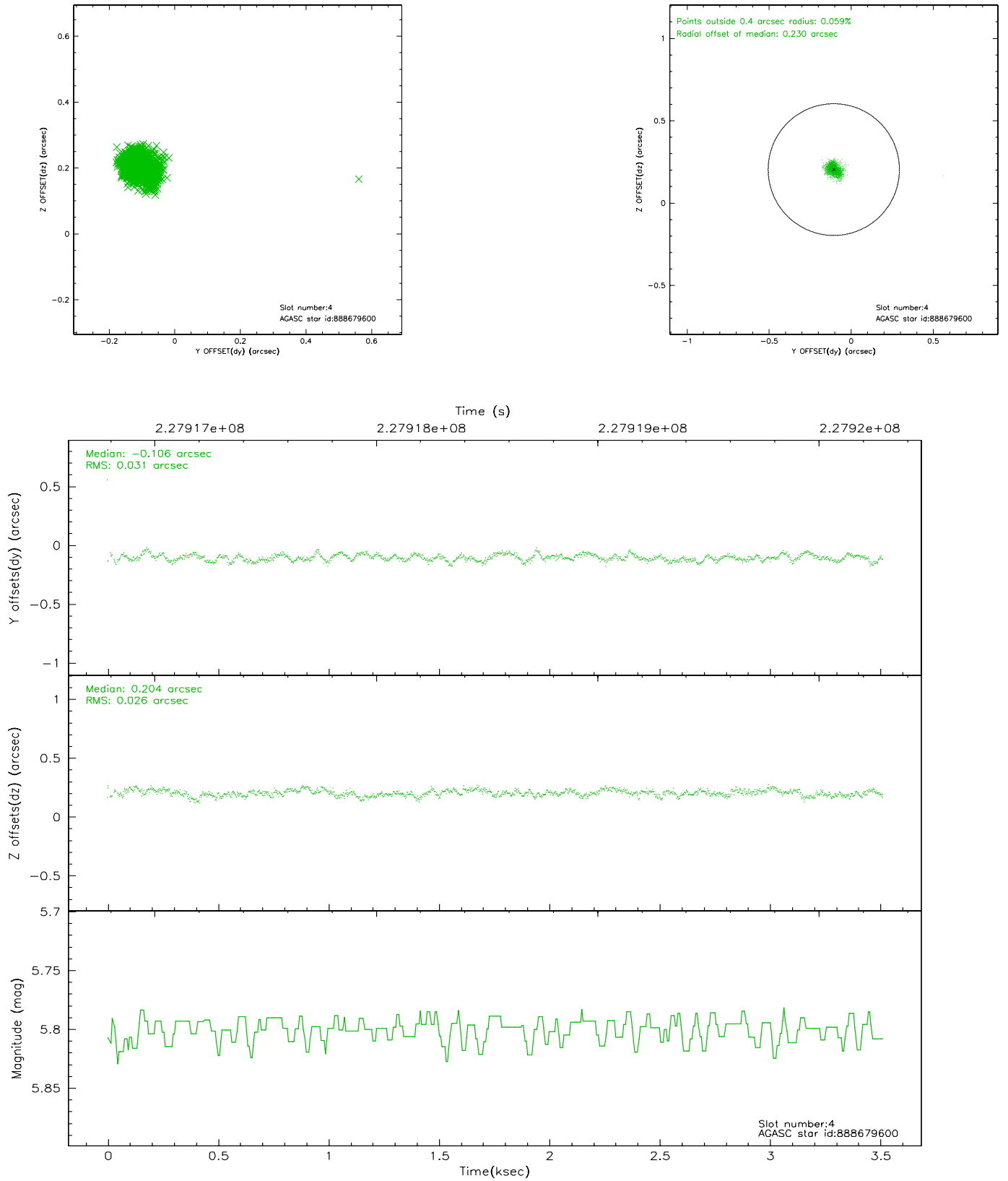
slot	status	id	mag	n_pts	med_dy	med_dz	dr1	dr2	ra	dec	mean_y	mean_z
0	FID	ACIS-S-1	7.19	857	0.011	0.006	0.007	0.012	0.000000	0.000000	935.50	-1726.59
1	FID	ACIS-S-2	7.11	858	-0.055	-0.022	0.006	0.009	0.000000	0.000000	-759.47	-1733.00
2	FID	ACIS-S-4	7.20	857	0.018	0.023	0.006	0.010	0.000000	0.000000	2151.95	175.72
3	GUIDE	888674248	8.78	1715	-0.069	0.110	0.095	0.154	242.349853	-23.178124	2135.79	-2272.87
4	GUIDE	888679600	5.80	1705	-0.106	0.204	0.040	0.063	242.051477	-23.793344	-235.93	-1778.49
5	GUIDE	888680880	7.77	1713	0.238	-0.187	0.060	0.103	241.150567	-24.100181	-1953.54	878.54
6	GUIDE	888674904	8.07	1714	0.176	-0.174	0.065	0.100	241.329780	-23.669126	-311.65	641.97
7	GUIDE	888672832	9.05	1713	-0.238	0.046	0.082	0.130	241.749086	-22.977226	2419.28	-175.04

2.4 Star Slots

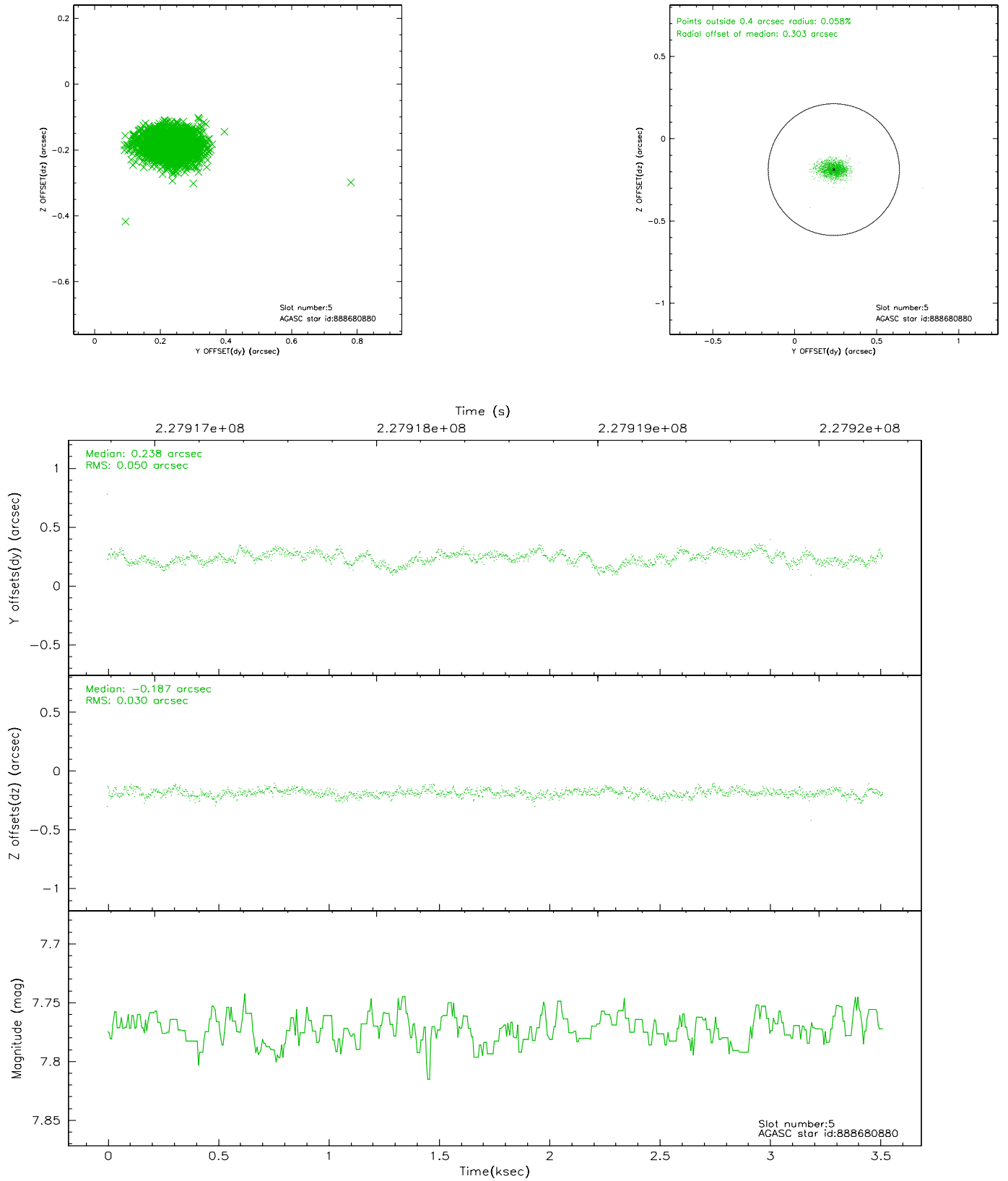
2.4.1 Slot 3



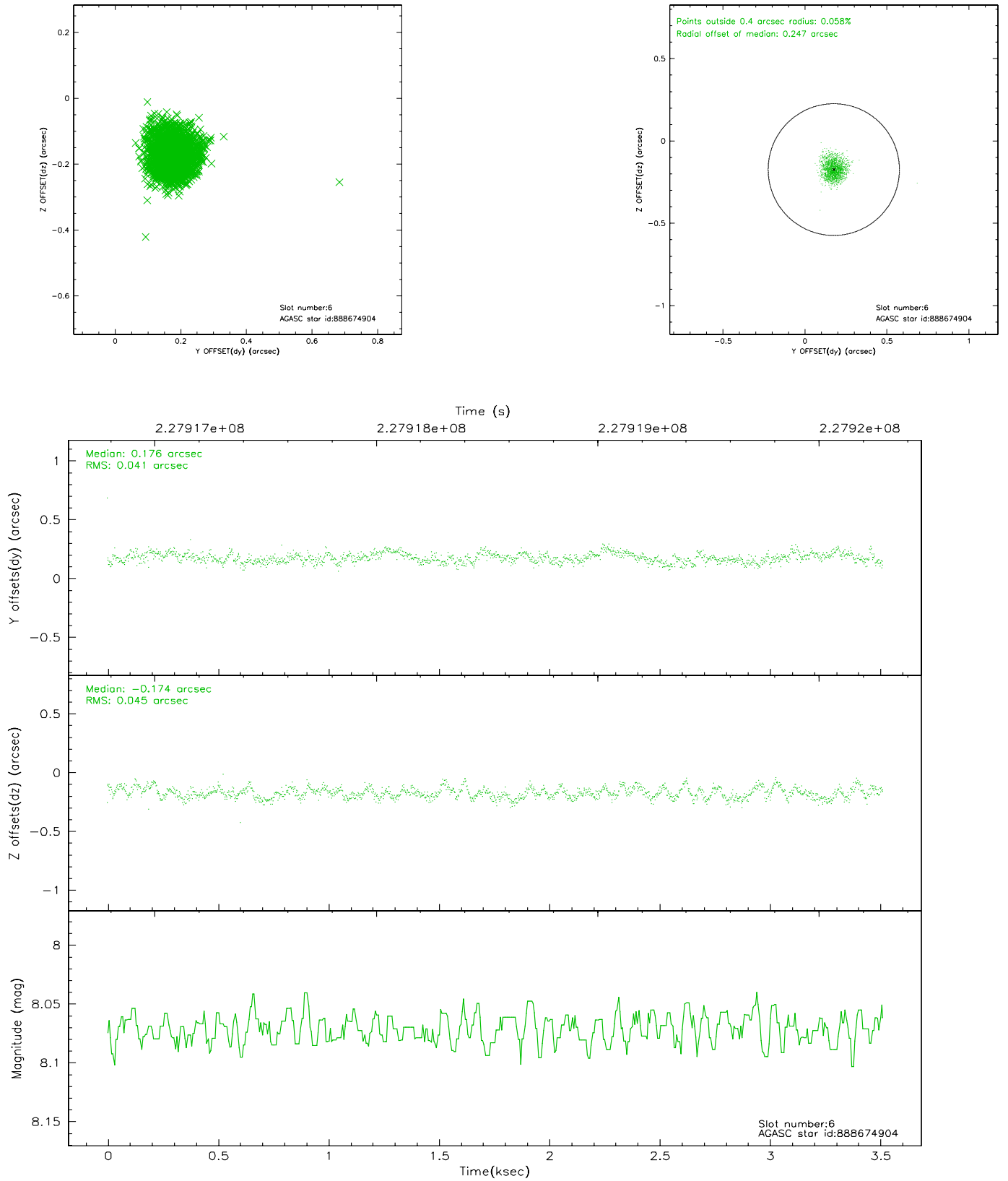
2.4.2 Slot 4



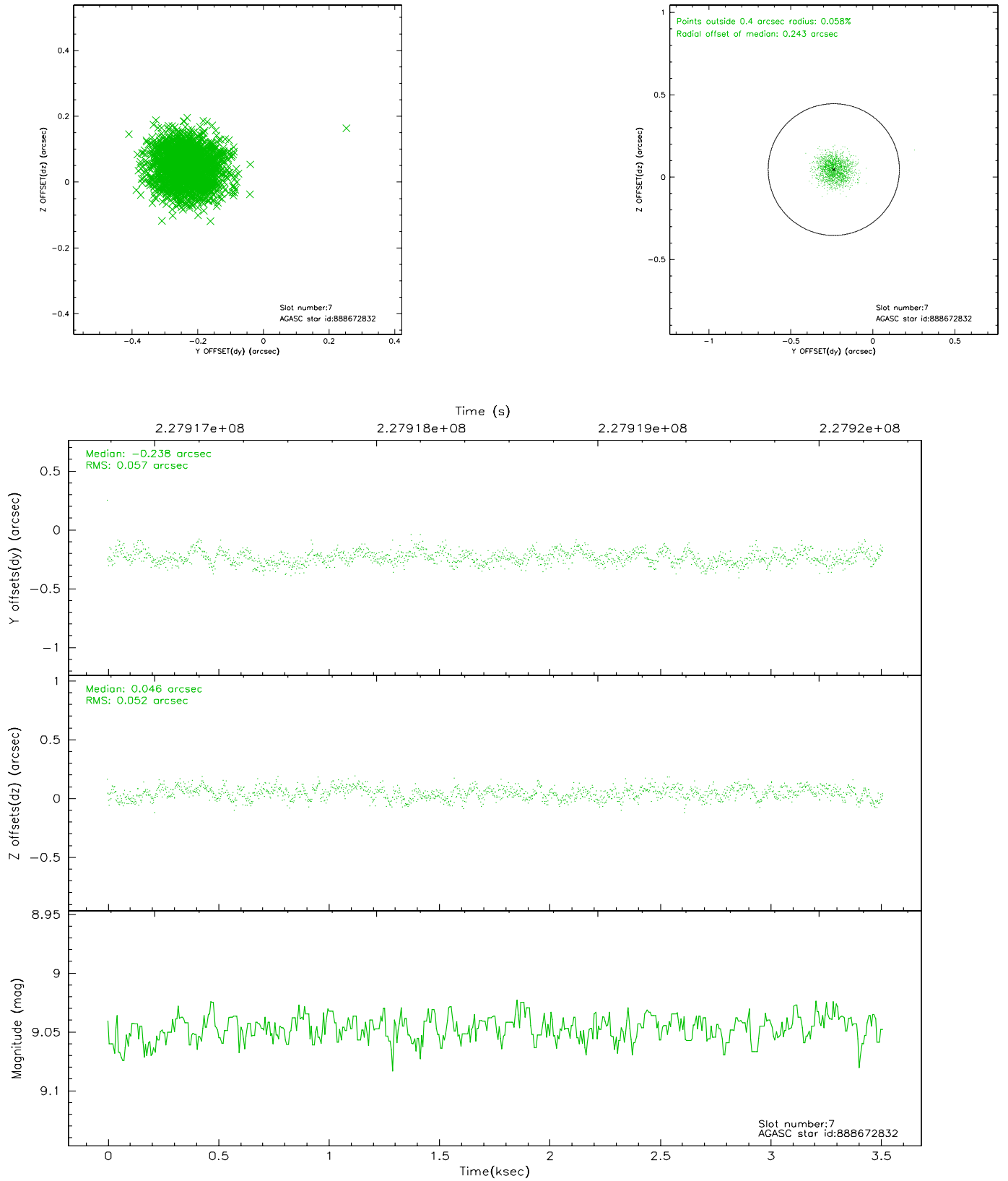
2.4.3 Slot 5



2.4.4 Slot 6

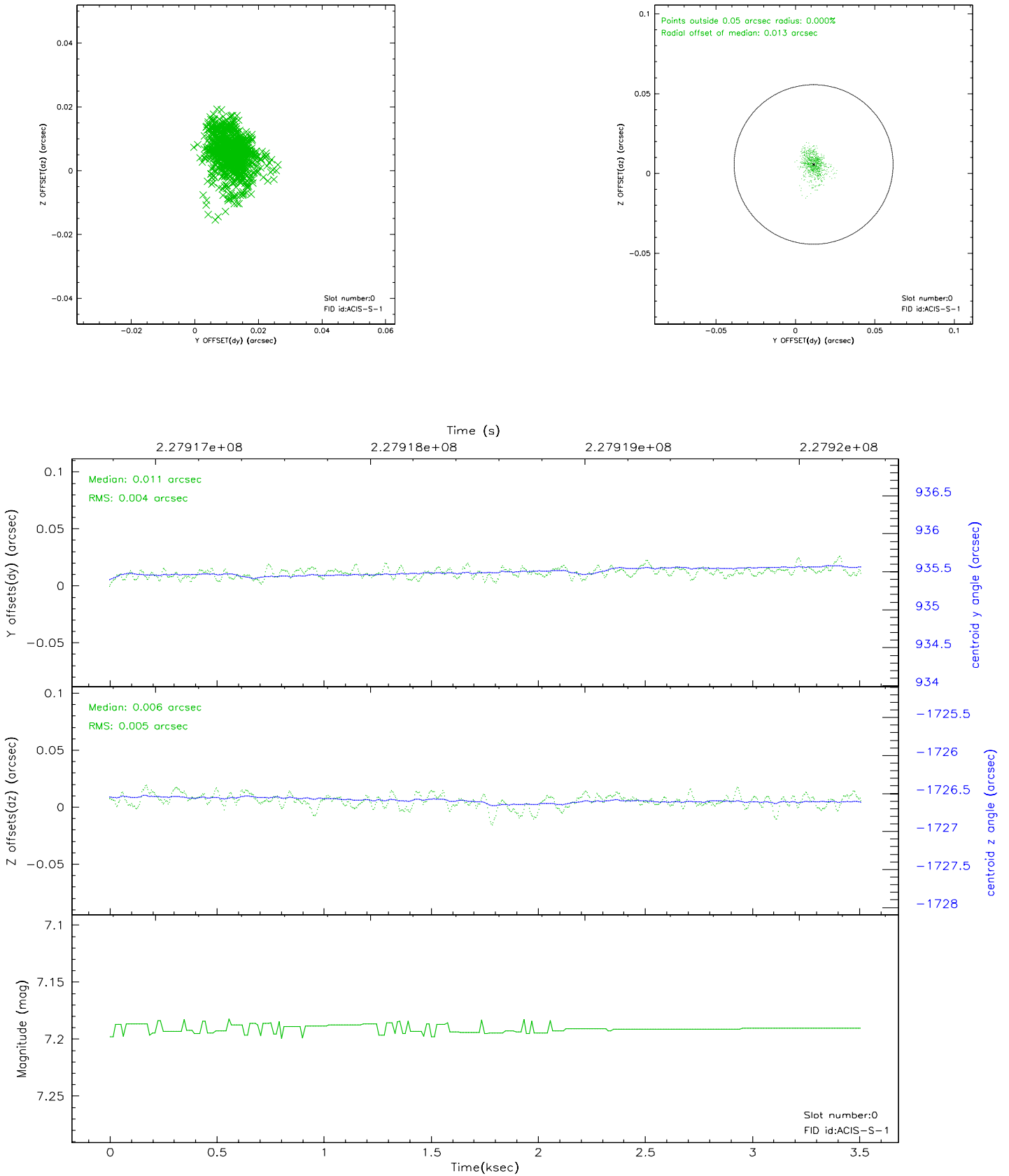


2.4.5 Slot 7

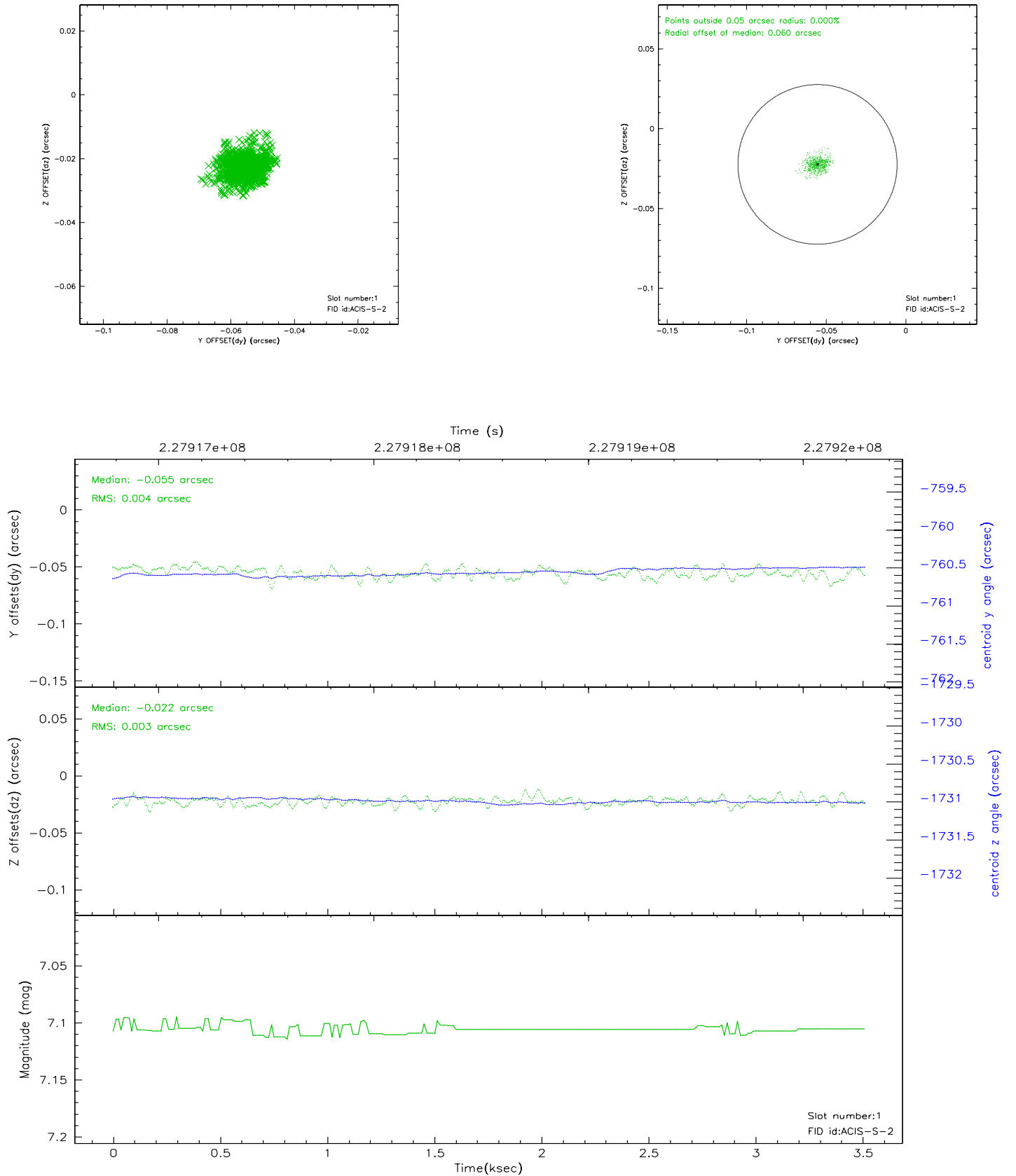


2.5 FID Slots

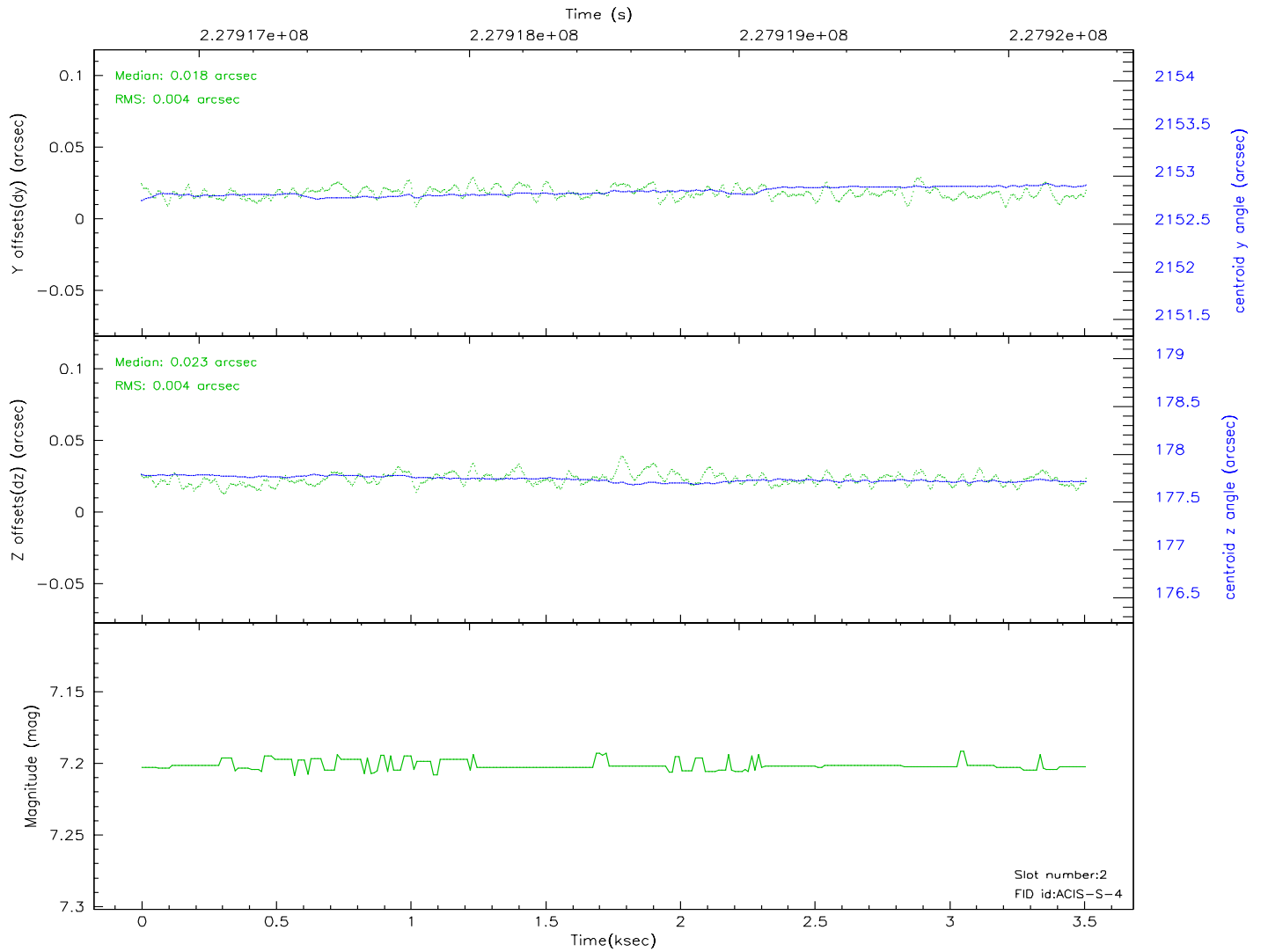
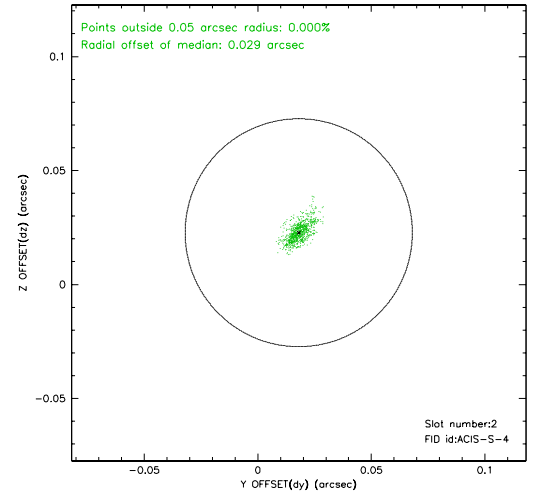
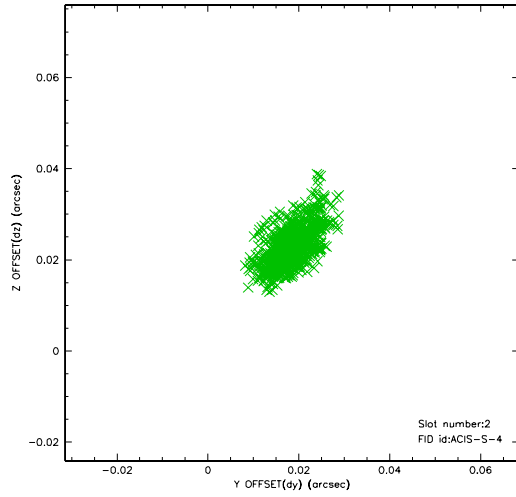
2.5.1 Slot 0



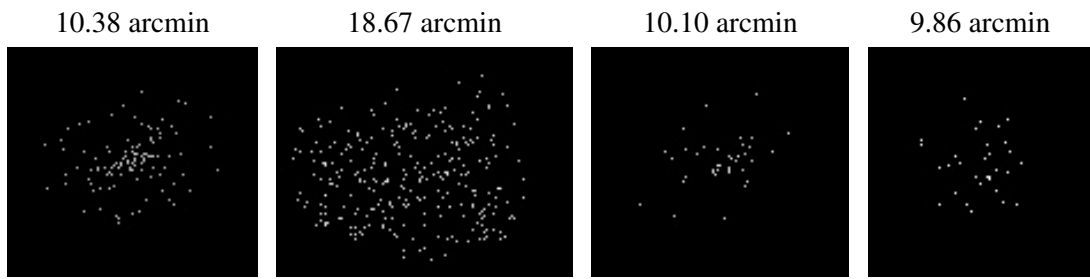
2.5.2 Slot 1



2.5.3 Slot 2



3 Point Sources



A Summary

A.1 Status

V&V Scientist	Jen Lauer
V&V Date (YYYY-MM-DD)	2006.03.17
V&V Edition	1
V&V Disposition and Status	OK
V&V Charge Time	2.953599

A.2 Comments