

V&V Reference Report

L2 ASCDS Version : 8.4.3

Observation 5384 - L2 Version 3
Chandra X-Ray Center

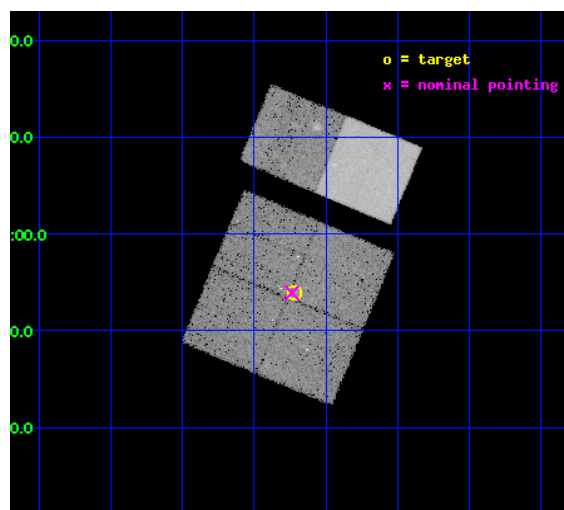
L2 Processing Date : Mar 18 2012

Contents

1	Front	2
2	OBI	3
2.1	OBI	3
2.1.1	Images	3
2.1.2	Bias	3
2.1.3	Parameters	4
2.1.4	Events	4
2.2	Compared Parameters	5
2.3	Aspect	6
2.4	Star Slots	9
2.4.1	Slot 3	9
2.4.2	Slot 4	10
2.4.3	Slot 6	11
2.4.4	Slot 7	12
2.5	FID Slots	13
2.5.1	Slot 0	13
2.5.2	Slot 1	14
2.5.3	Slot 2	15
A	Summary	16
A.1	Status	16
A.2	Comments	16

1 Front

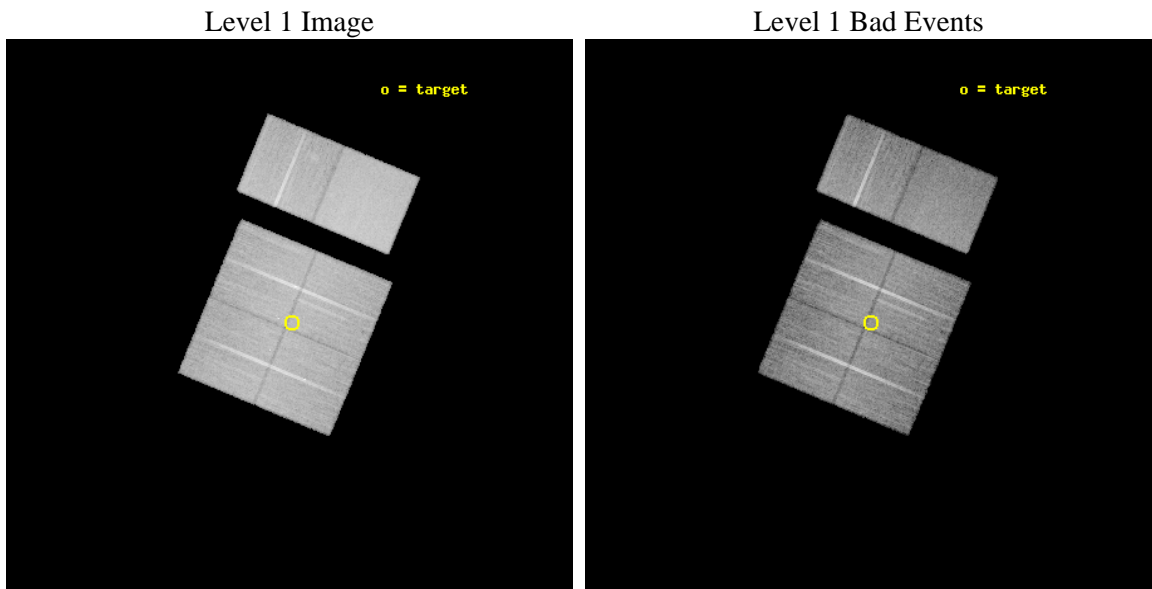
seq_num	200319	Sequence number
obs_id	5384	Observation id
title	X-ray Imaging of McNeil's Star: Witnessing the Onset of an Accretion Burst	Proposal title
observer	Dr. Joel Kastner	Principal investigator
object	IRAS05436-0007	Source name
dtcycle	0	
cycle	P	events from which exps? Prim/Second/Both
ra_targ	86.554583	Observer's specified target RA [deg]
dec_targ	-0.101389	Observer's specified target Dec [deg]
ra_nom	86.559201417376	Nominal RA [deg]
dec_nom	-0.10140817862657	Nominal Dec [deg]
roll_nom	22.564904210172	Nominal Roll [deg]
revision	3	Processing version of data
ontime	19951.958925366	Sum of GTIs [s]
livetime	19699.315207826	Livetime [s]
ontime0	19955.199925661	Sum of GTIs [s]
ontime1	19955.199925661	Sum of GTIs [s]
ontime2	19955.199925661	Sum of GTIs [s]
ontime3	19951.958925366	Sum of GTIs [s]
ontime6	19955.199925661	Sum of GTIs [s]
ontime7	19955.199925661	Sum of GTIs [s]
l2events	172645	Number of level 2 events



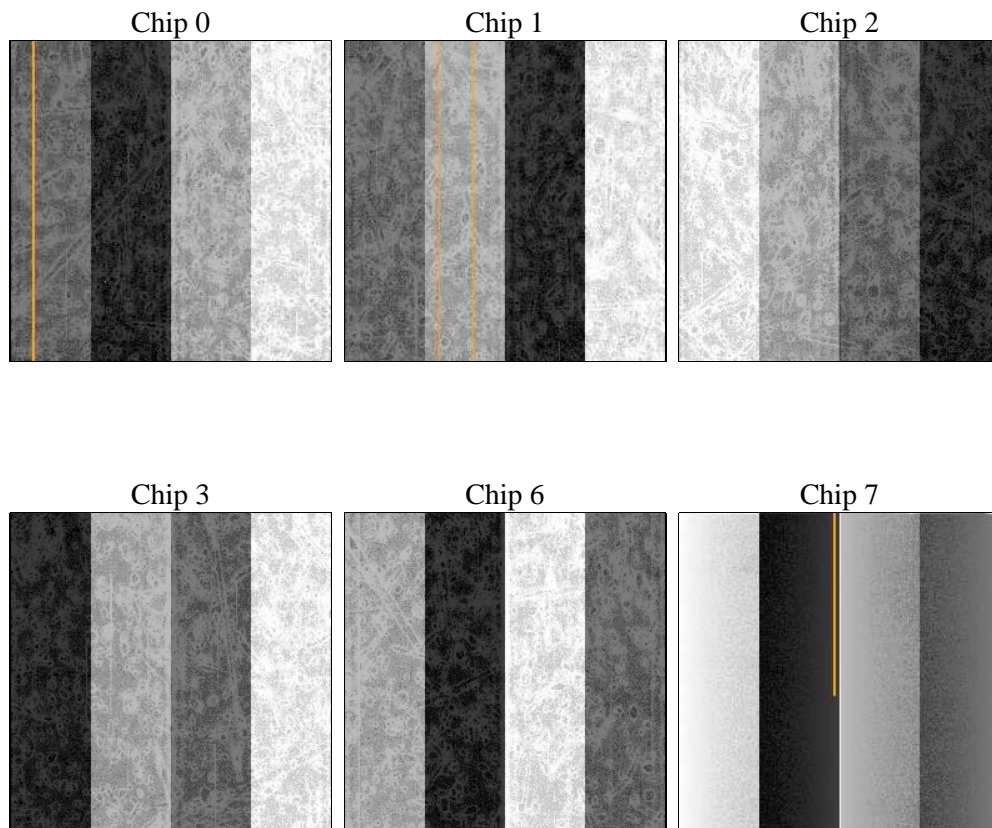
2 OBI

2.1 OBI

2.1.1 Images



2.1.2 Bias



2.1.3 Parameters

obi_num	0	Obi number	sched_exp_time	20000.000000	[s] Scheduled observation exposure time
ascdsver	8.4.3	Processing system revision	ontime	19951.958925366	Sum of GTIs [s]
caldsver	4.4.8	 	ontime0	19955.199925661	Sum of GTIs [s]
date	2012-03-18T19:37:06	Date and time of file creation	ontime1	19955.199925661	Sum of GTIs [s]
revision	3	Processing version of data	ontime2	19955.199925661	Sum of GTIs [s]
			ontime3	19951.958925366	Sum of GTIs [s]
			ontime6	19955.199925661	Sum of GTIs [s]
			ontime7	19955.199925661	Sum of GTIs [s]
			l1events	998605	Number of level 1 events

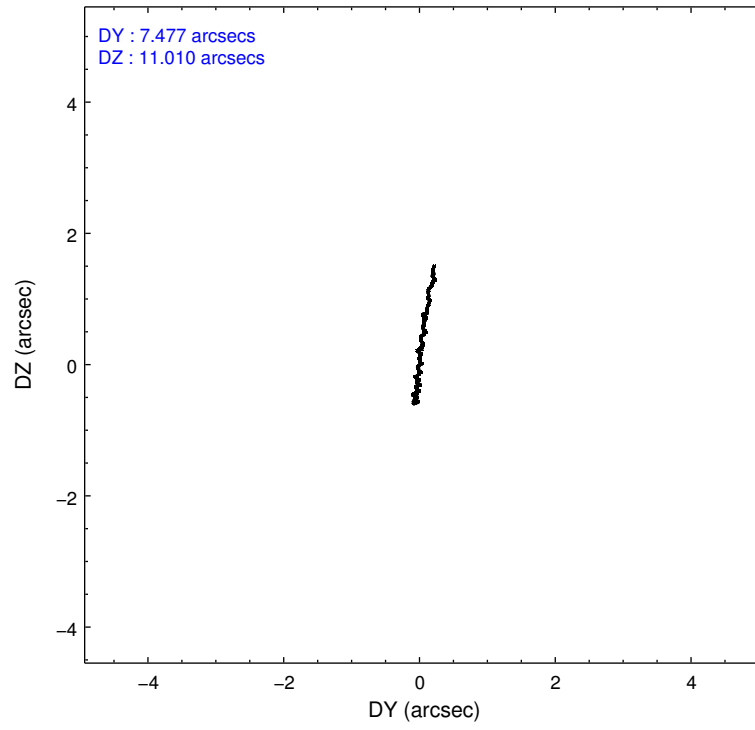
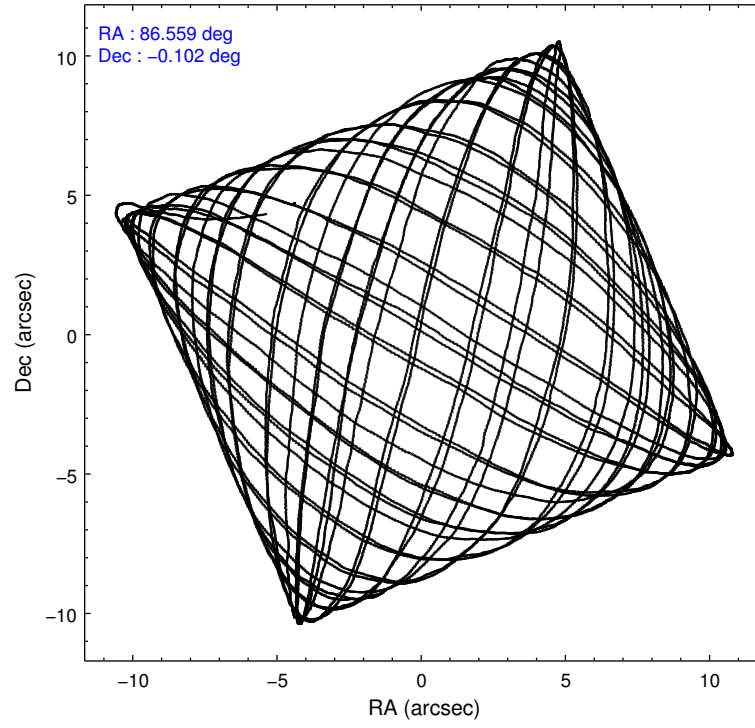
2.1.4 Events

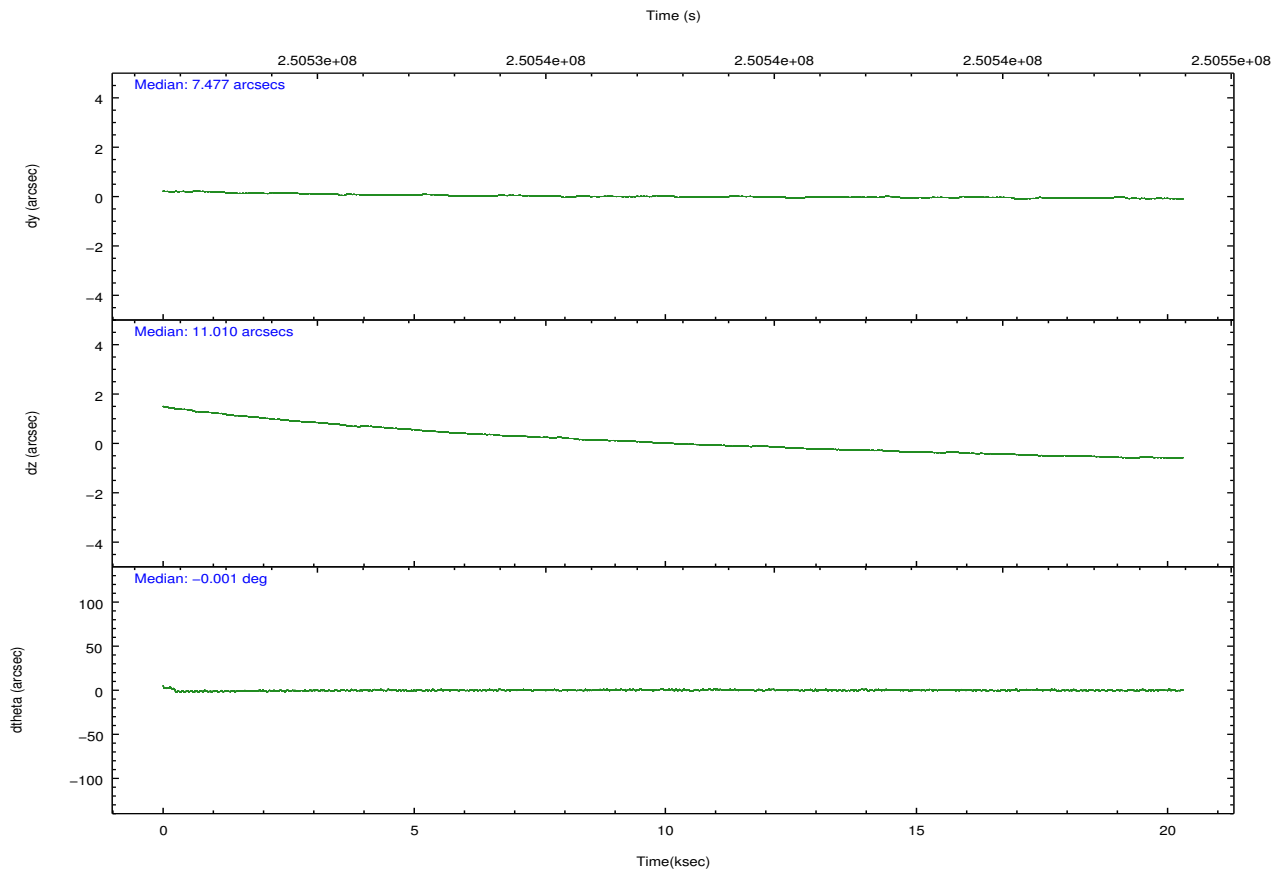
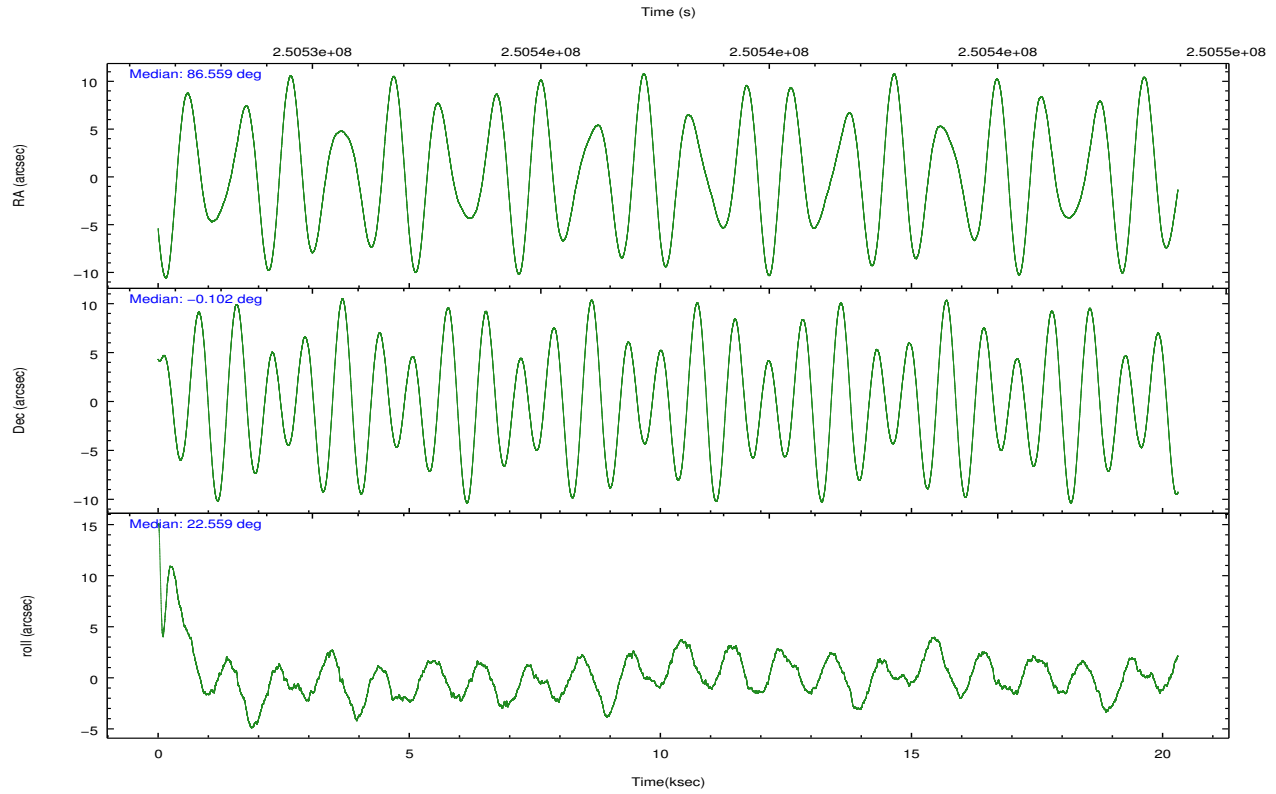
	ccd 0	ccd 1	ccd 2	ccd 3	ccd 6	ccd 7		ccd 0	ccd 1	ccd 2	ccd 3	ccd 6	ccd 7
level 1 events	147813	147997	162414	156705	164860	218816	grade 0 events	8361	8096	8964	8292	8296	7606
rejected events	128402	127627	142830	137722	144678	129176		5%	5%	5%	5%	5%	3%
rejected %	86%	86%	87%	87%	87%	59%	grade 1 events	103	90	104	114	85	222
								0%	0%	0%	0%	0%	0%
							grade 2 events	4106	4543	3898	3670	4195	17965
								2%	3%	2%	2%	2%	8%
							grade 3 events	1955	1869	1757	1829	1894	7832
								1%	1%	1%	1%	1%	3%
							grade 4 events	1682	1966	1856	1792	1806	7585
								1%	1%	1%	1%	1%	3%
							grade 5 events	6178	7005	6069	7256	7781	20696
								4%	4%	3%	4%	4%	9%
							grade 6 events	3313	3897	3119	3410	3994	48679
								2%	2%	1%	2%	2%	22%
							grade 7 events	122115	120531	136647	130342	136809	108231
								82%	81%	84%	83%	82%	49%

2.2 Compared Parameters

Parameter	Planned	Actual	Parameter	Planned	Actual
Instrument	ACIS	ACIS	Obspar format version number	7	7
Detector	ACIS-012367	ACIS-012367	Obspar file type	PREDICTED	ACTUAL
Grating	NONE	NONE	Obspar update status	NONE	UPDATED
Data mode	FAINT	FAINT	Number of optional ACIS chips dropped	0	0
Observation mode	POINTING	POINTING	On-chip summing requested	N	N
[deg] Pointing RA	86.542660	86.55920141737639	Subarray requested	NONE	NONE
[deg] Pointing Dec	-0.123236	-0.1014081786265698	Alternating exposures requested	N	N
[deg] Pointing Roll	22.356179	22.56490421017231	[s] Primary exposure time	0.000000	3.2
[mm] SIM focus pos	-0.782348	-0.7809083437167272			
[mm] SIM defocus	0	0.001439871863259334			
[mm] SIM translation stage pos	-233.592463	-233.5874344608287			
[mm] SIM translation stage offset	0	-0.005018542100998502			
[s] Observation start time (MET)	250527938.184000	250526915.22644			
Observation start date	2005-12-09T15:04:34	2005-12-09T14:48:35			
[s] Observation end time (MET)	250547938.184000	250548731.83995			
Observation end date	2005-12-09T20:37:54	2005-12-09T20:52:11			
Read mode	TIMED	TIMED			

2.3 Aspect



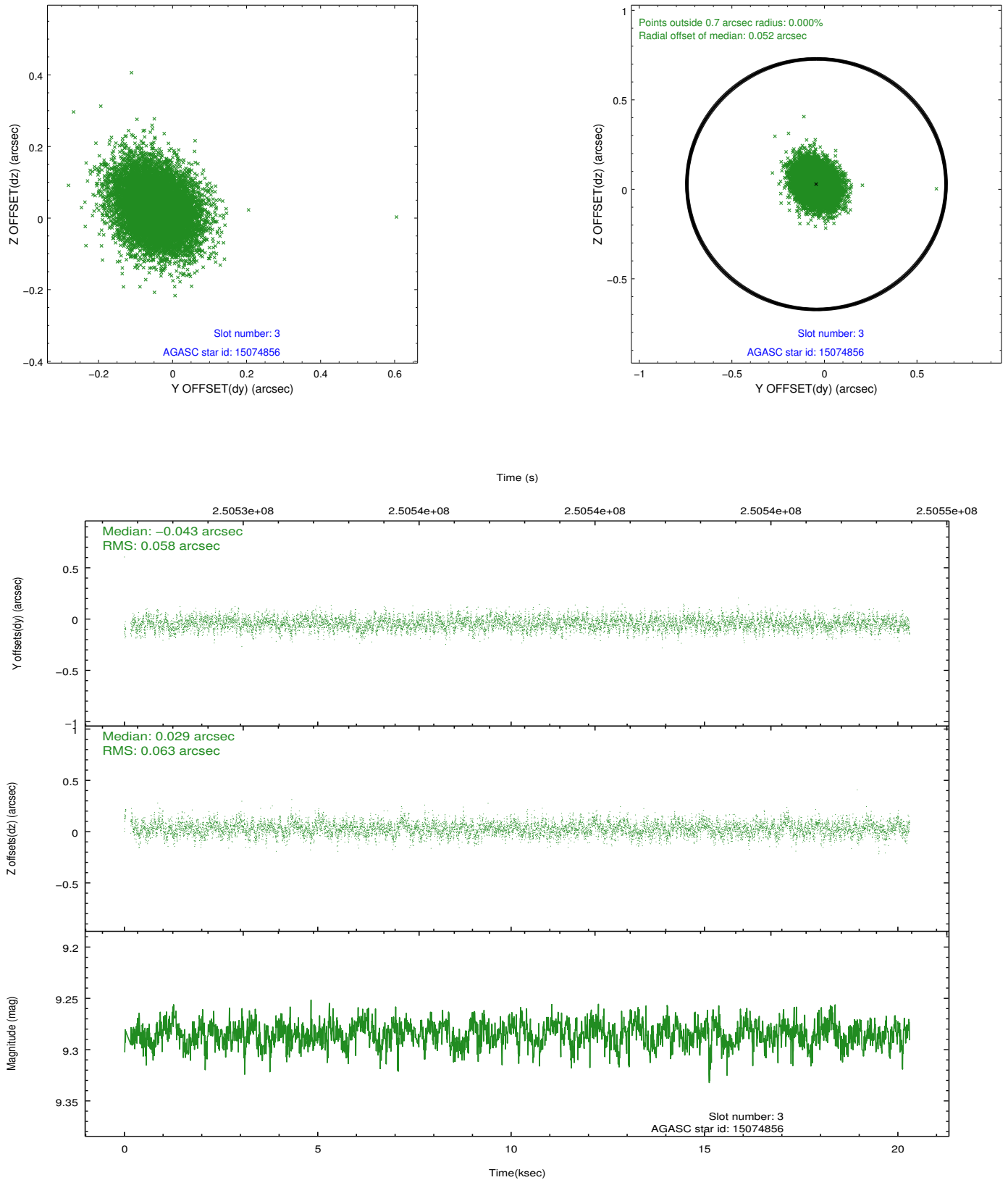


Slot Statistics

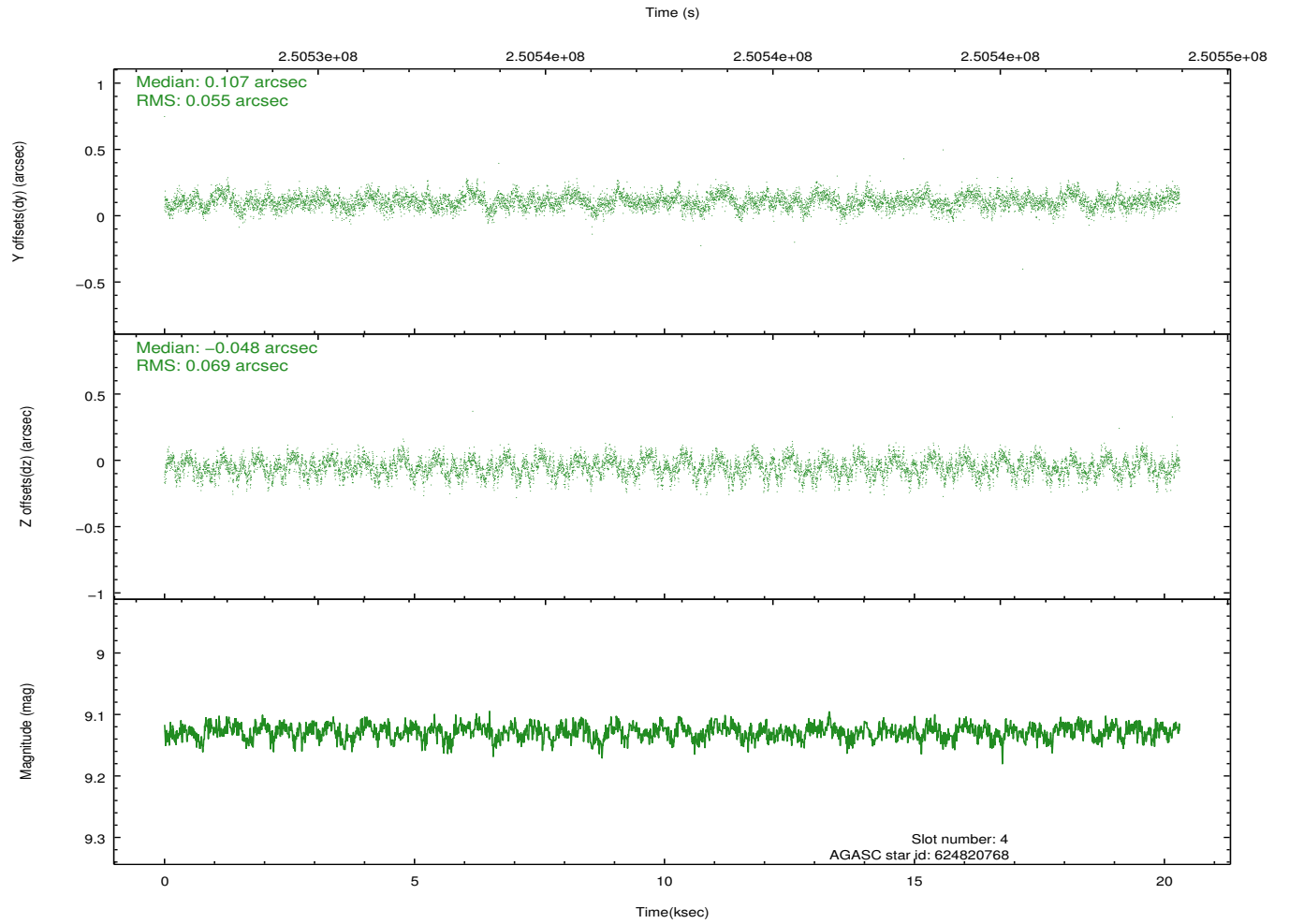
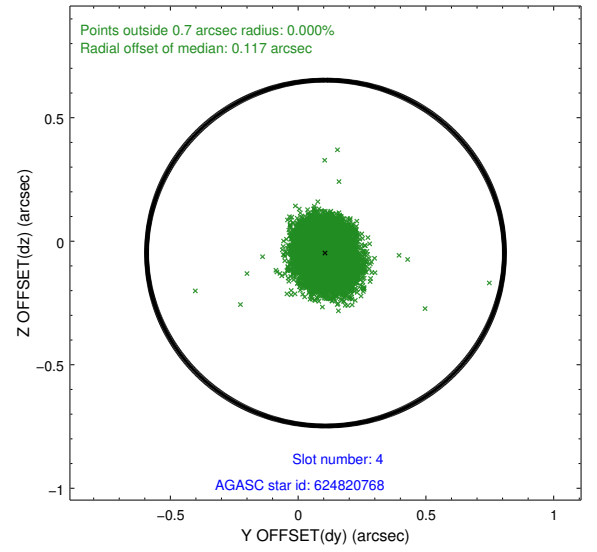
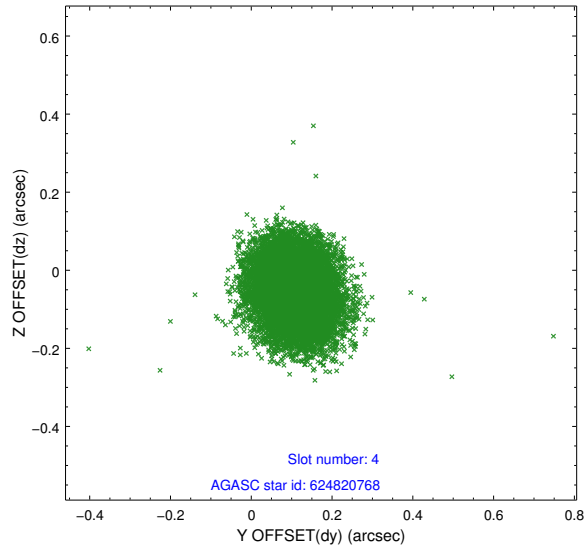
slot	status	id	mag	n_pts	med_dy	med_dz	dr1	dr2	ra	dec	mean_y	mean_z
0	FID	ACIS-I-1	7.25	4952	-0.016	-0.046	0.031	0.047	0.000000	0.000000	932.15	-834.69
1	FID	ACIS-I-4	7.18	4953	0.127	0.062	0.022	0.031	0.000000	0.000000	2152.46	1065.11
2	FID	ACIS-I-5	7.22	4952	-0.209	0.054	0.012	0.019	0.000000	0.000000	-1815.79	1063.21
3	GUIDE	15074856	9.28	9841	-0.043	0.029	0.091	0.148	85.760802	0.169633	-2202.37	2045.81
4	GUIDE	624820768	9.13	9895	0.107	-0.048	0.094	0.150	86.202480	-0.061953	-1048.67	670.20
5	OMITTED		0.00	0	0.000	0.000	0.000	0.000	0.000000	0.000000	0.00	0.00
6	GUIDE	624954400	9.16	9902	0.016	0.121	0.105	0.179	86.607838	-0.762568	-658.15	-2217.43
7	GUIDE	15212184	10.05	9890	-0.082	-0.104	0.121	0.196	86.645698	0.614228	1352.64	2314.35

2.4 Star Slots

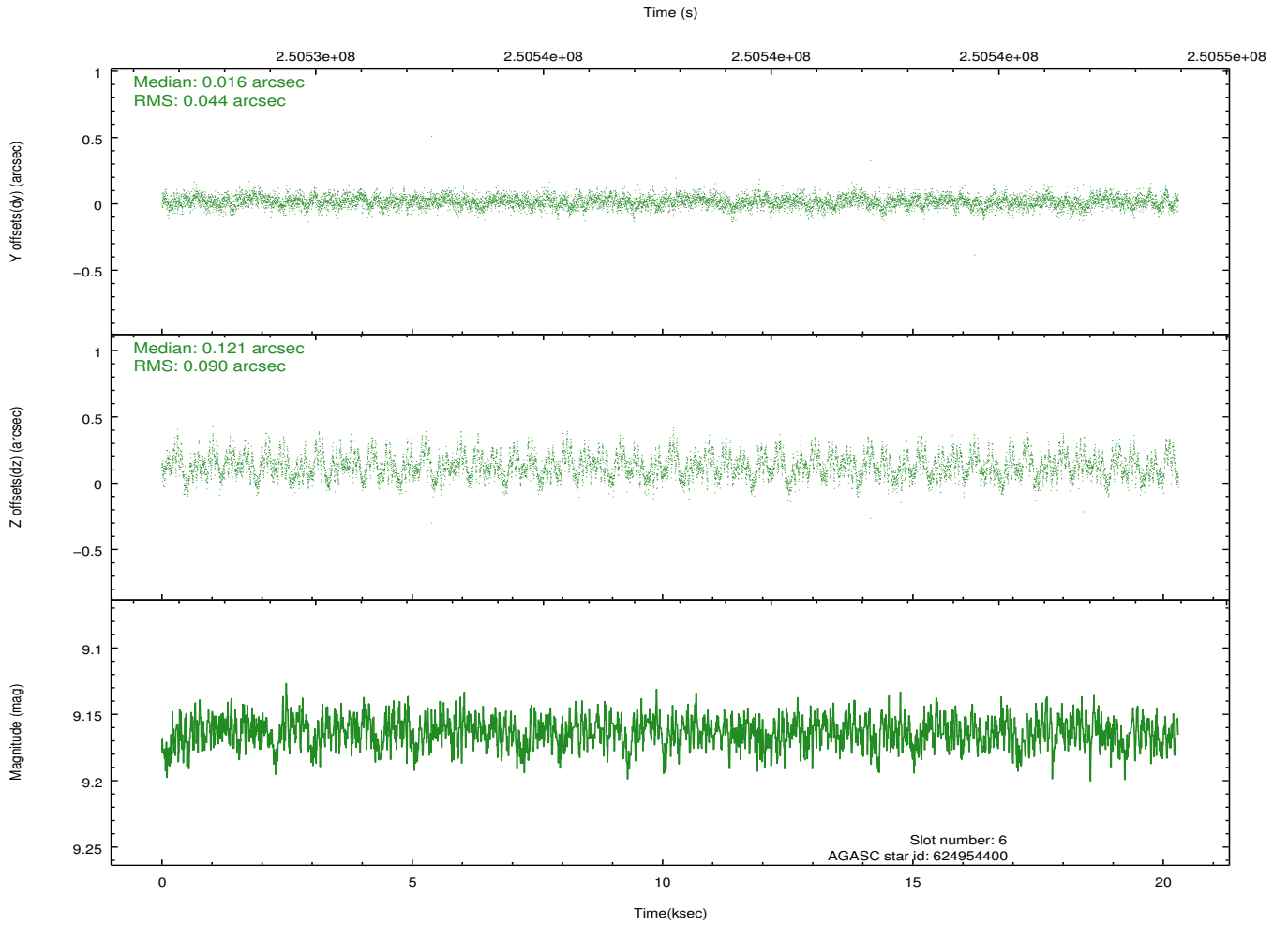
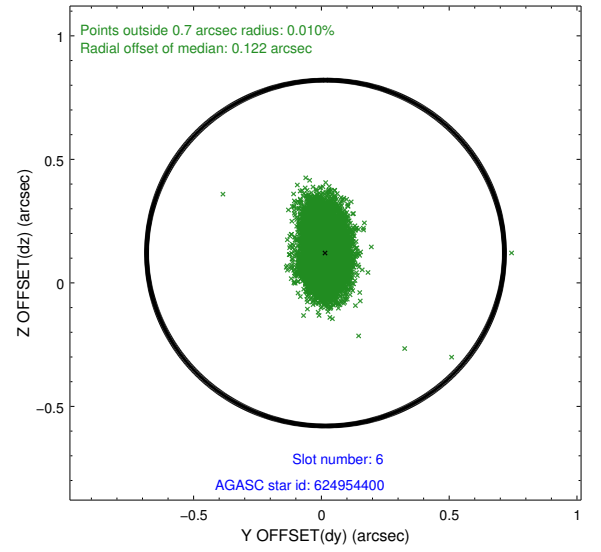
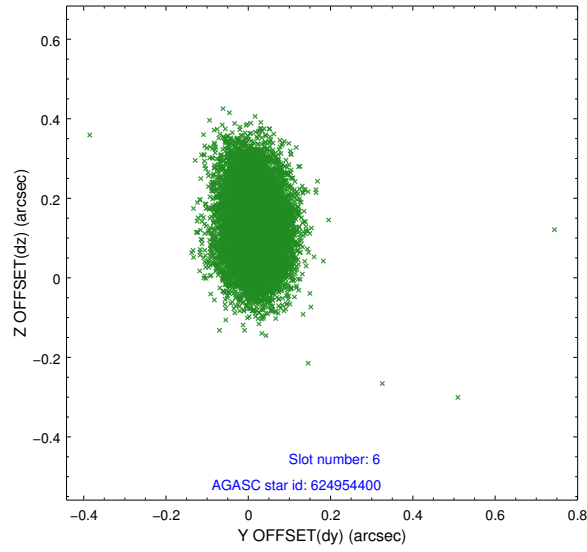
2.4.1 Slot 3



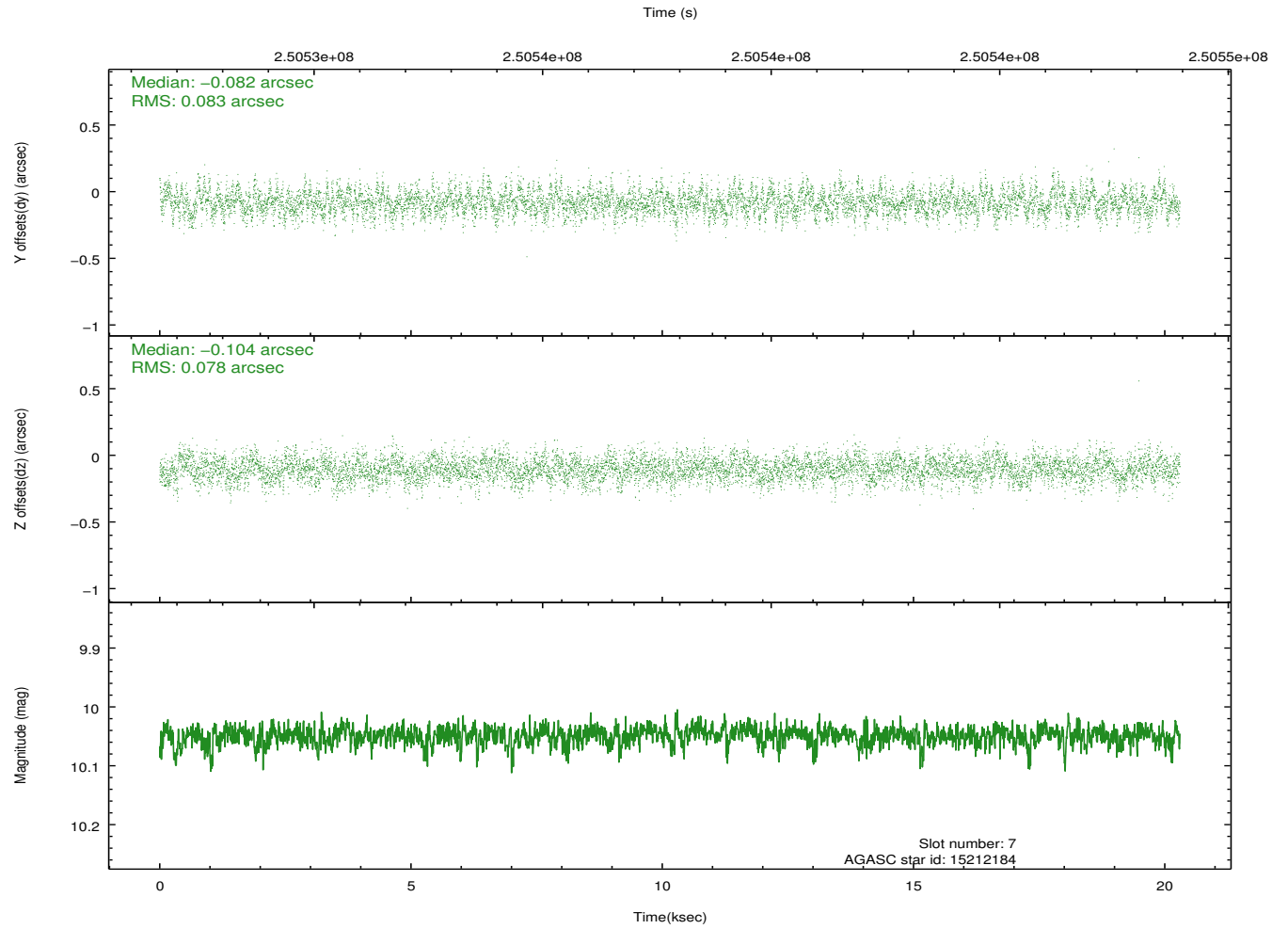
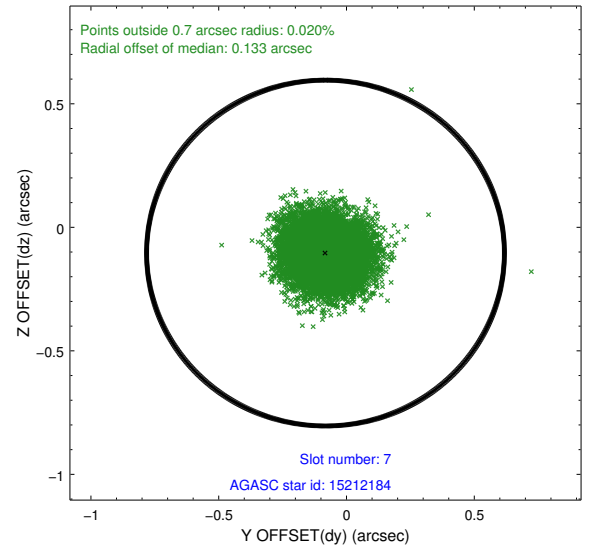
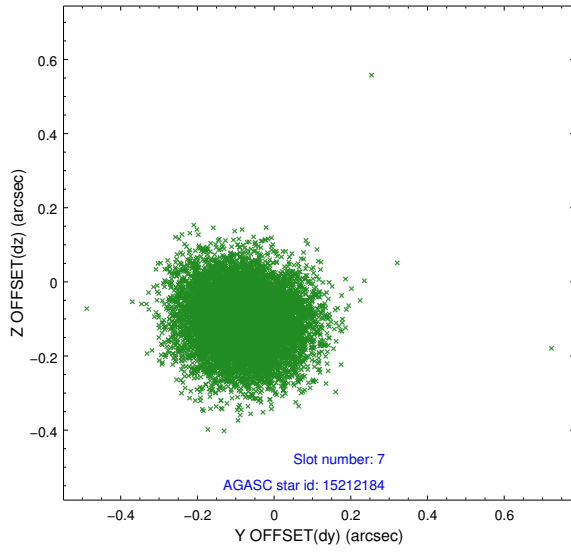
2.4.2 Slot 4



2.4.3 Slot 6

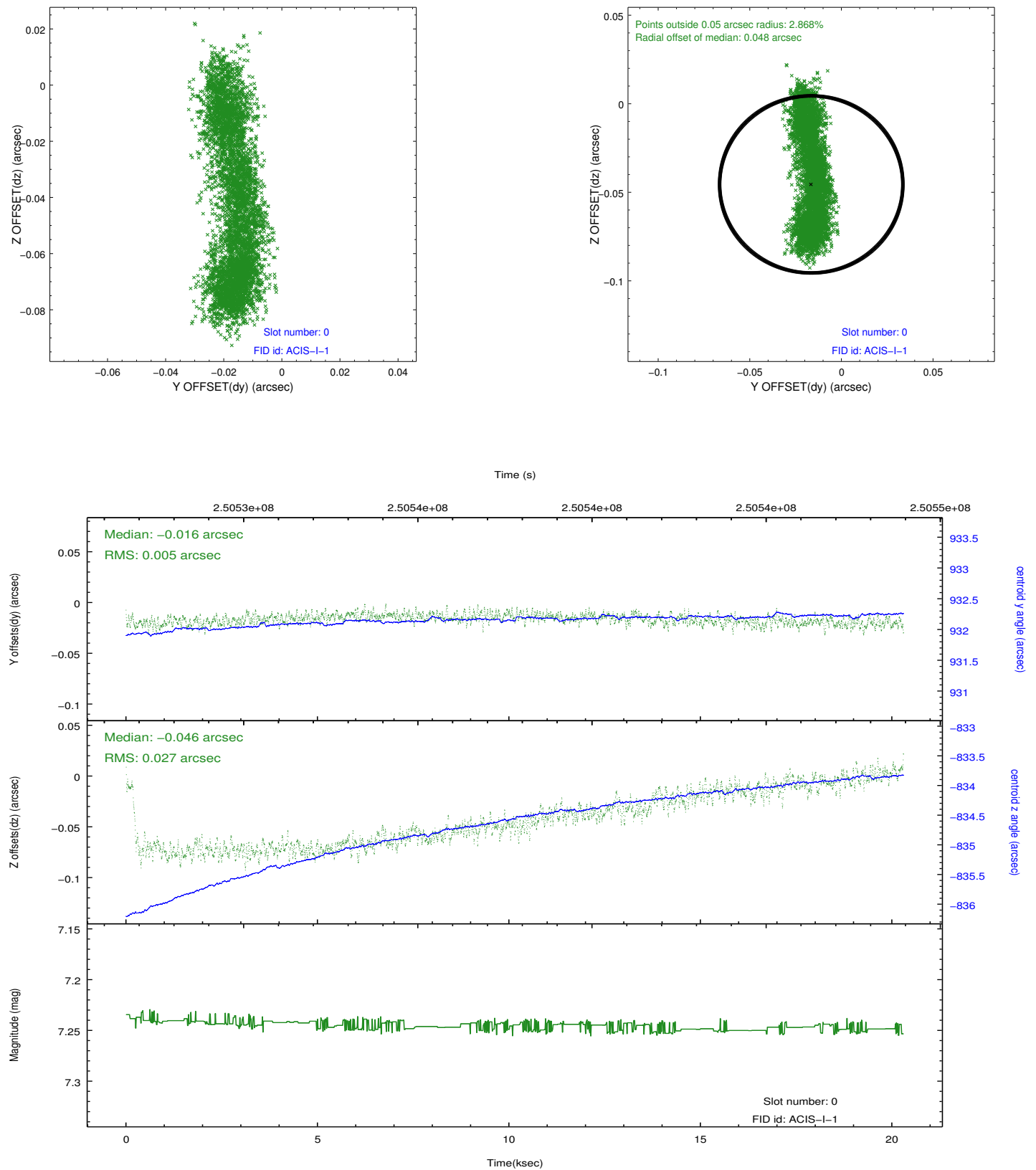


2.4.4 Slot 7

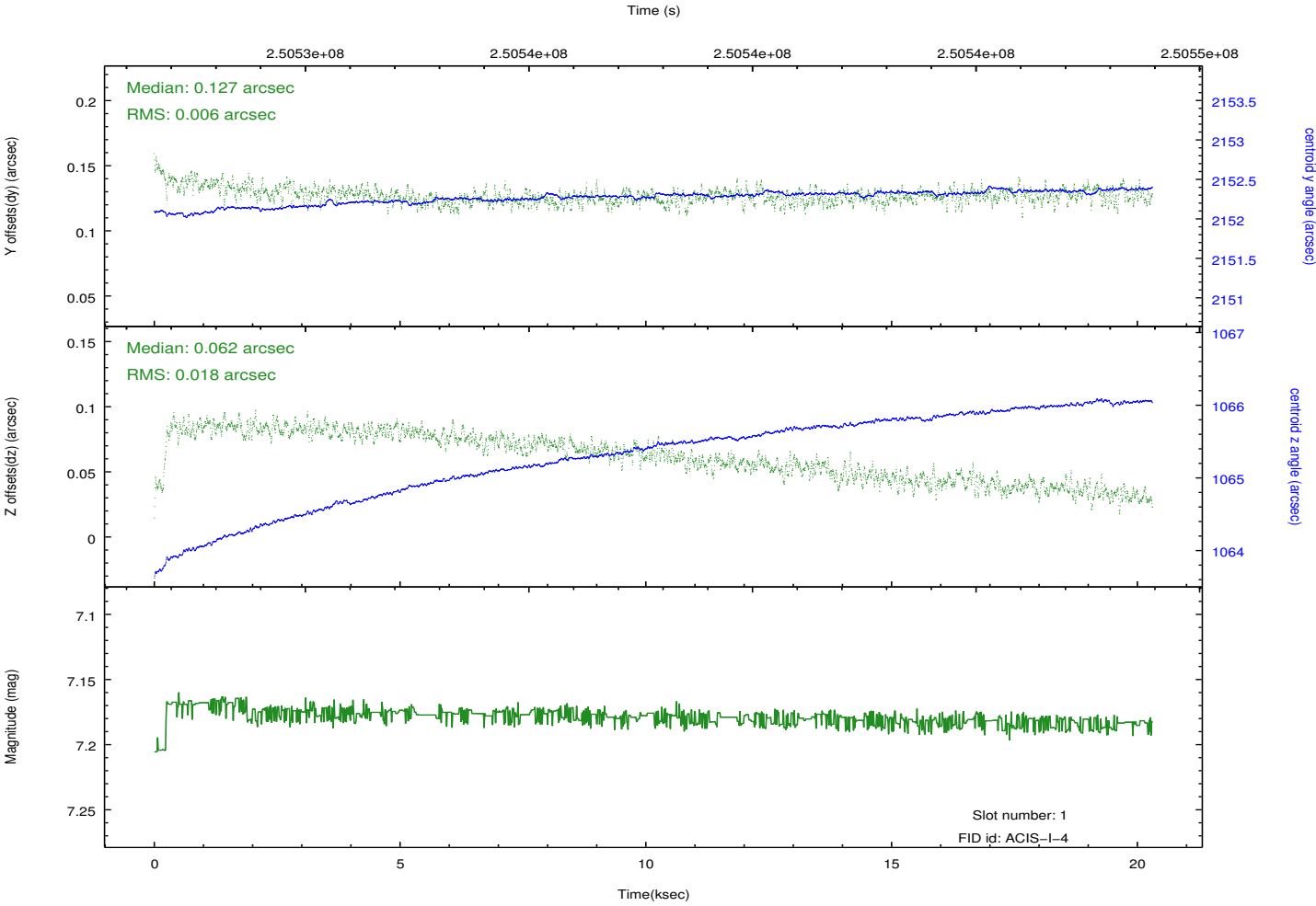
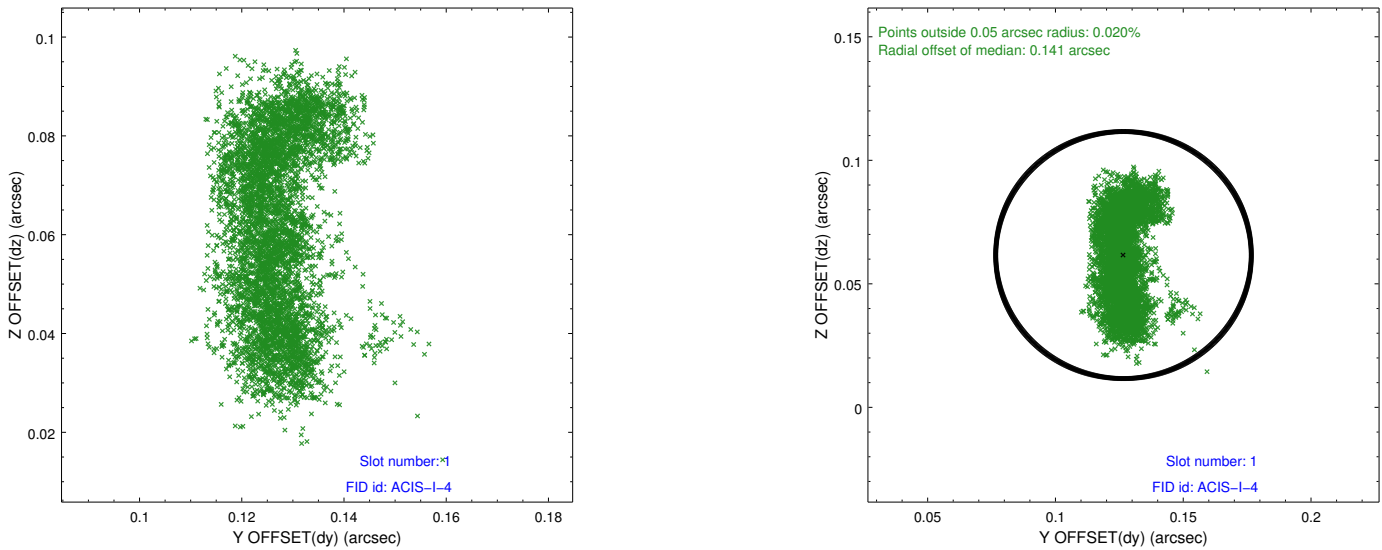


2.5 FID Slots

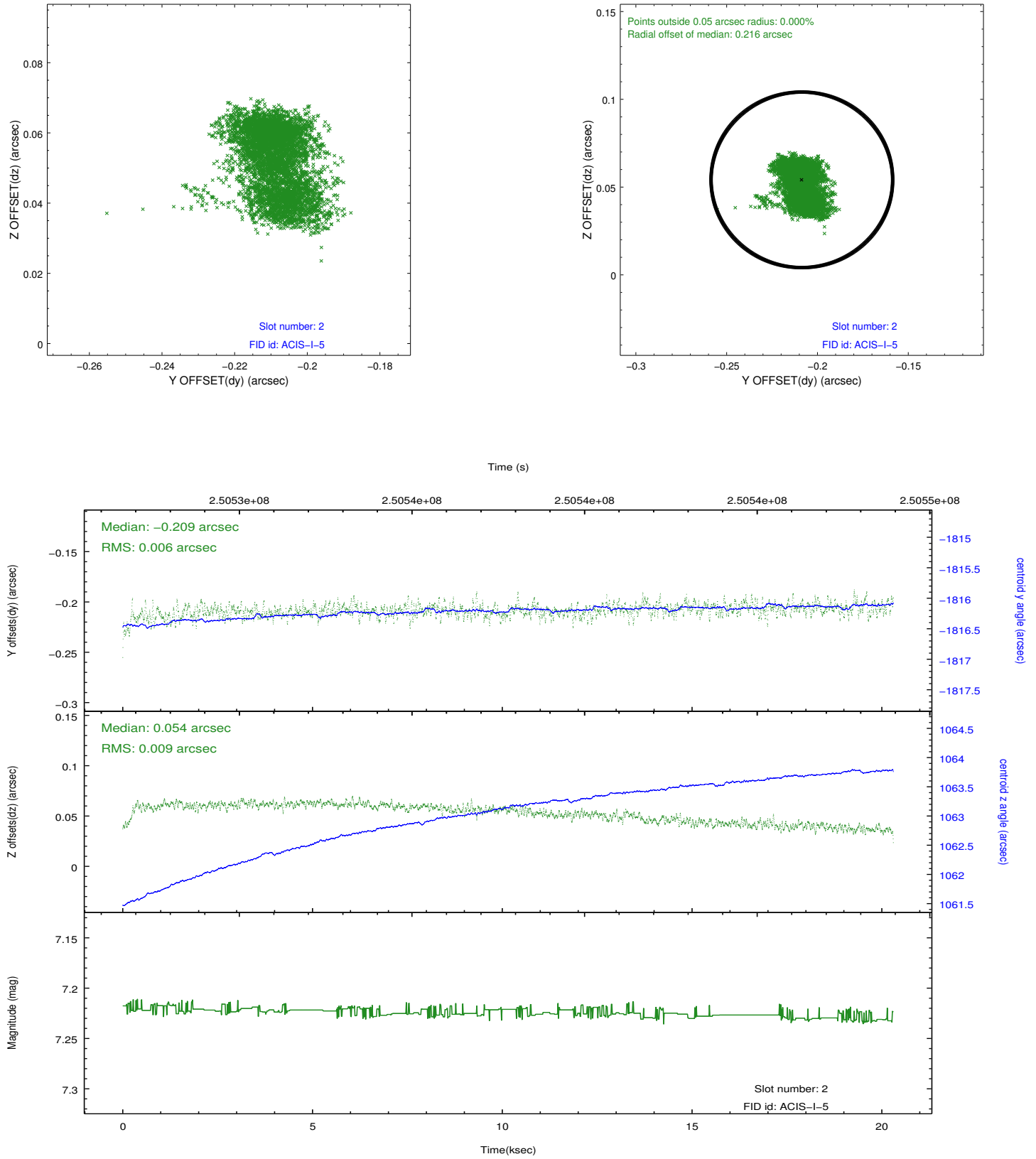
2.5.1 Slot 0



2.5.2 Slot 1



2.5.3 Slot 2



A Summary

A.1 Status

V&V Scientist	Beth Sundheim
V&V Date (YYYY-MM-DD)	2012.03.19
V&V Edition	1
V&V Disposition and Status	OK
V&V Charge Time	19.95195

A.2 Comments

The guide star in slot 5 was removed from the aspect solution due to poor data quality. The aspect solution is improved by the removal of this star from the solution.