

# V&V Reference Report

## L2 ASCDS Version : 7.6.7.1

Observation 5380 - L2 Version 002  
Chandra X-Ray Center

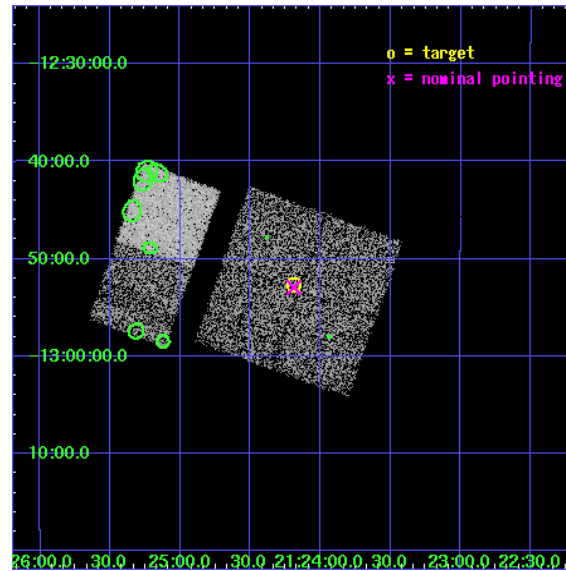
L2 Processing Date : Apr 8 2006

## Contents

<b>1</b>	<b>Front</b>	<b>2</b>
<b>2</b>	<b>OBI</b>	<b>3</b>
2.1	OBI . . . . .	3
2.1.1	Images . . . . .	3
2.1.2	Bias . . . . .	3
2.1.3	Parameters . . . . .	4
2.1.4	Events . . . . .	4
2.2	Compared Parameters . . . . .	5
2.3	Aspect . . . . .	6
2.4	Star Slots . . . . .	9
2.4.1	Slot 3 . . . . .	9
2.4.2	Slot 4 . . . . .	10
2.4.3	Slot 5 . . . . .	11
2.4.4	Slot 6 . . . . .	12
2.4.5	Slot 7 . . . . .	13
2.5	FID Slots . . . . .	14
2.5.1	Slot 0 . . . . .	14
2.5.2	Slot 1 . . . . .	15
2.5.3	Slot 2 . . . . .	16
<b>3</b>	<b>Point Sources</b>	<b>17</b>
<b>A</b>	<b>Summary</b>	<b>18</b>
A.1	Status . . . . .	18
A.2	Comments . . . . .	18

# 1 Front

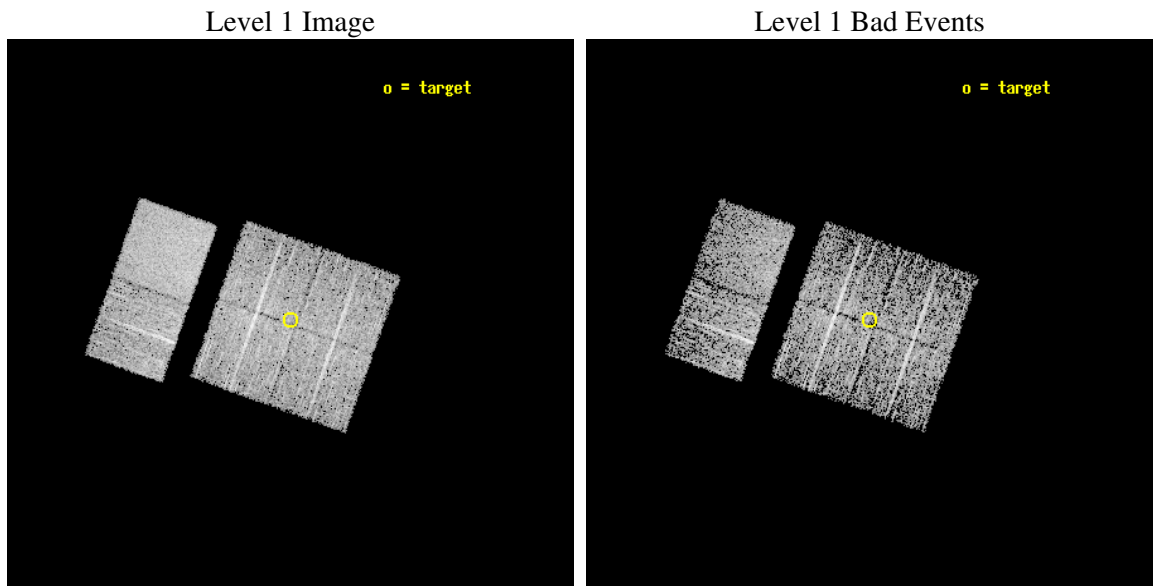
seq_num	200315
obs_id	5380
title	Search for beta Pic analogs
observer	Professor Gordon Garmire
object	18 Aqr
dtcycle	0
cycle	P
ra_targ	321.0475
dec_targ	-12.878056
ra_nom	321.04724808968
dec_nom	-12.882581292487
roll_nom	289.69067264231
revision	2
ontime	3171.1999881864
livetime	3131.0443444686
ontime0	3171.1999881864
ontime1	3171.1999881864
ontime2	3171.1999881864
ontime3	3171.1999881864
ontime6	3171.1999881864
ontime7	3171.1999881864
l2events	30206



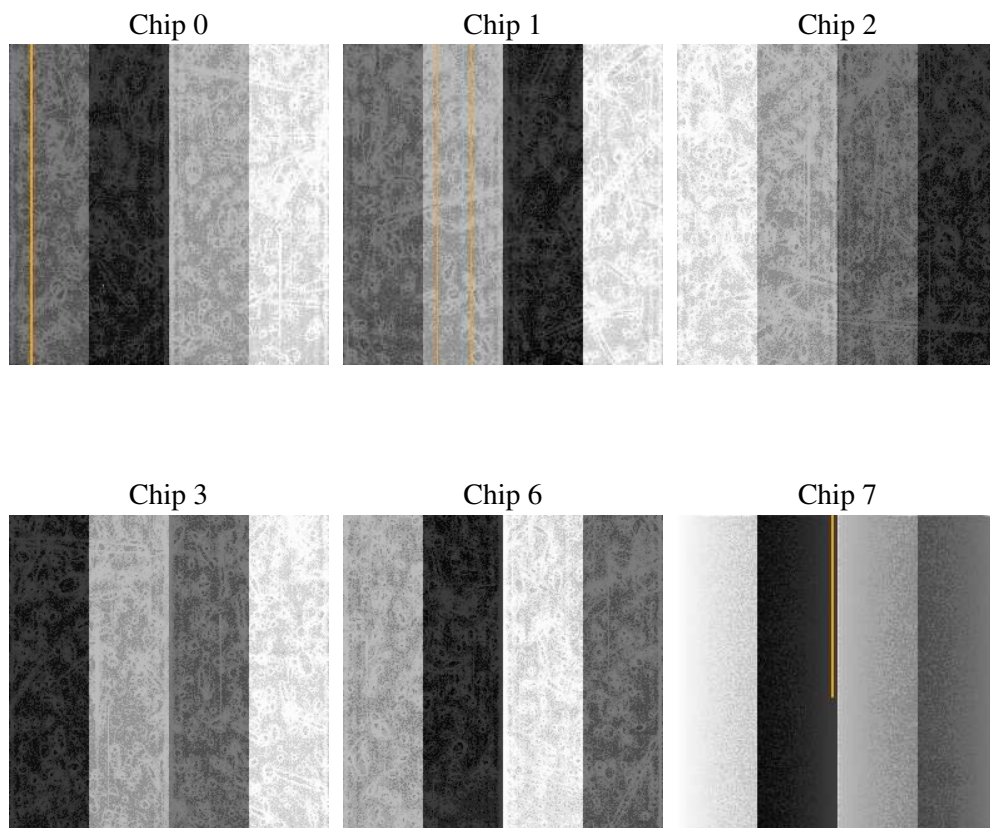
## 2 OBI

### 2.1 OBI

#### 2.1.1 Images



#### 2.1.2 Bias



### 2.1.3 Parameters

obi_num	0
ascdsver	7.6.7.1
caldsver	3.2.1
date	2006-04-08T19:41:45
revision	2

sched_exp_time	3000.000000
ontime	3202.1096542776
ontime0	3202.1096542776
ontime1	3202.1096542776
ontime2	3202.1096542776
ontime3	3202.1096542776
ontime6	3202.1096542776
ontime7	3202.1096542776
l1events	154786

### 2.1.4 Events

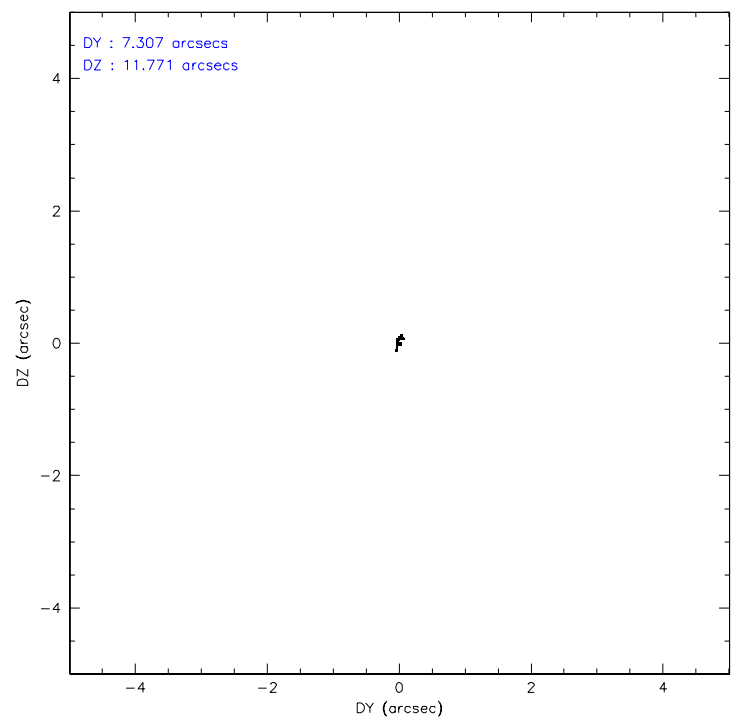
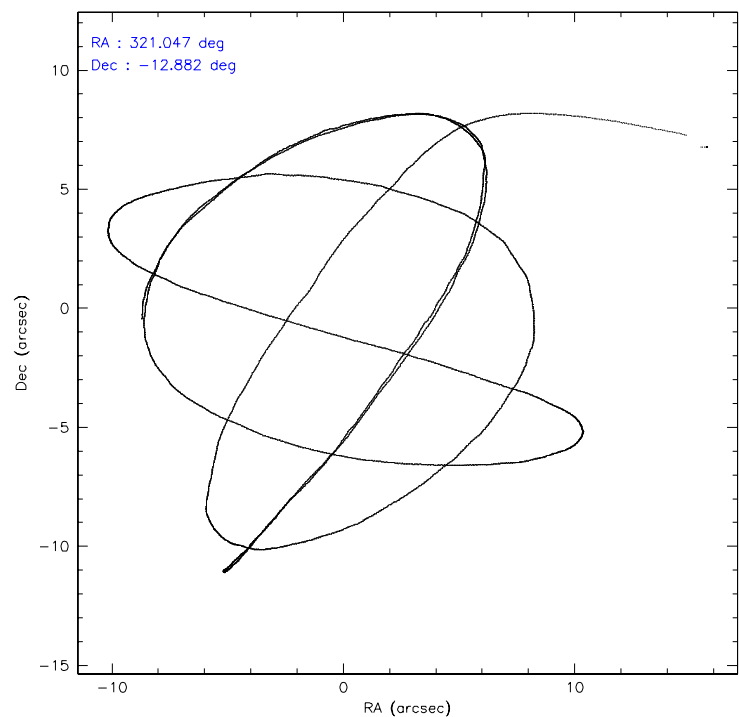
	ccd 0	ccd 1	ccd 2	ccd 3	ccd 6	ccd 7
level 1 events	22886	22924	26621	23167	25586	33602
rejected events	18966	18888	22758	19415	21756	20290
rejected %	82%	82%	85%	83%	85%	60%

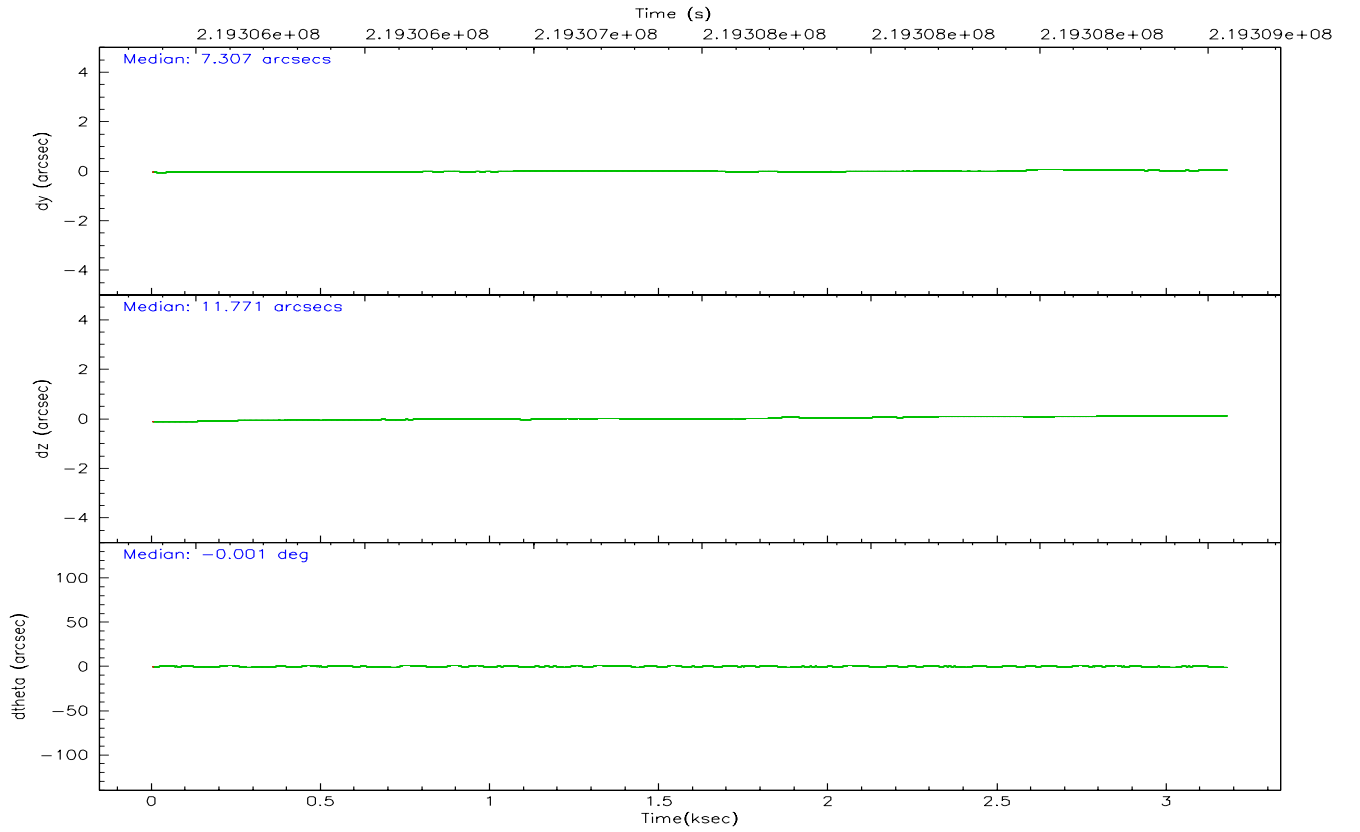
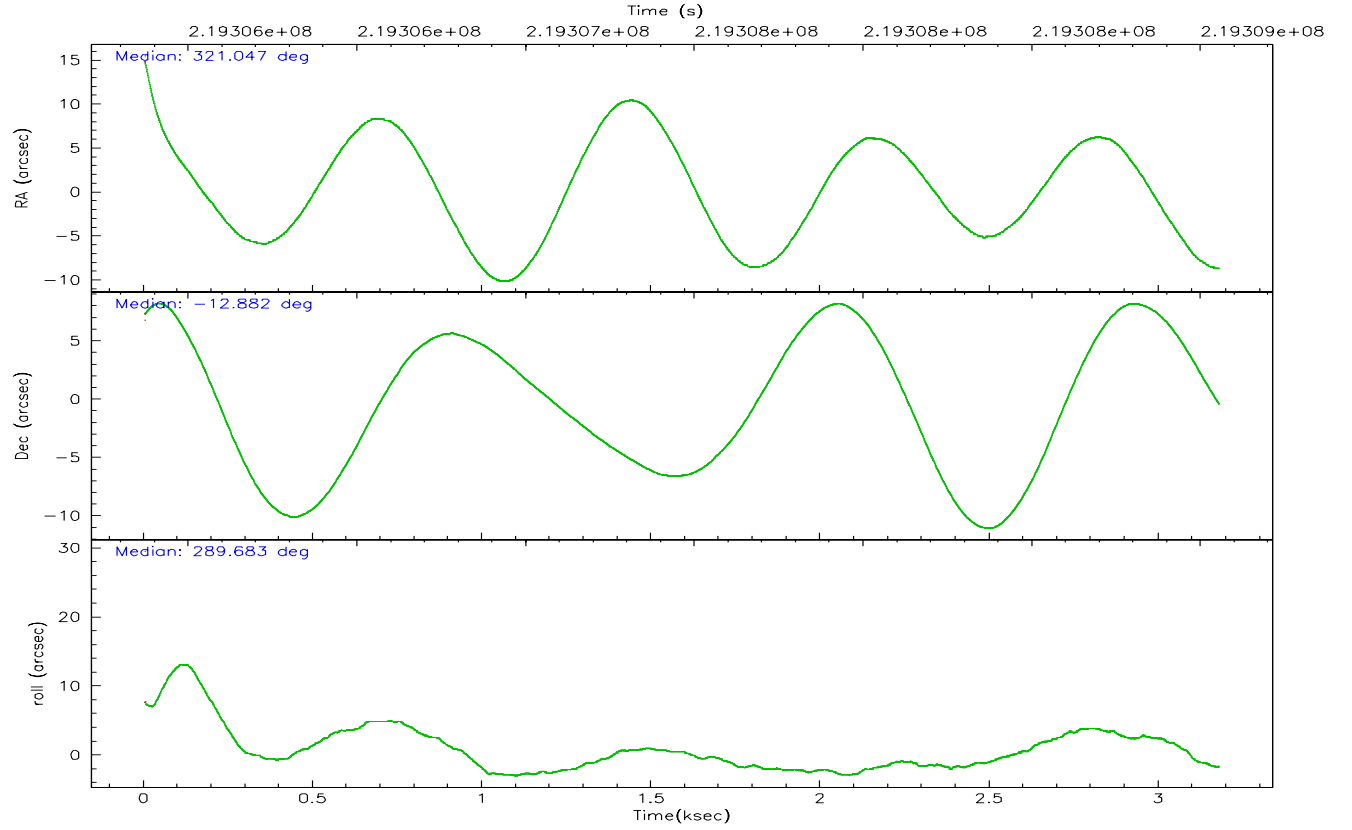
	ccd 0	ccd 1	ccd 2	ccd 3	ccd 6	ccd 7
grade 0 events	2066	1889	2057	2001	1882	770
	9%	8%	7%	8%	7%	2%
grade 1 events	9	11	21	19	10	24
	0%	0%	0%	0%	0%	0%
grade 2 events	698	832	698	651	725	3341
	3%	3%	2%	2%	2%	9%
grade 3 events	377	350	343	303	313	668
	1%	1%	1%	1%	1%	1%
grade 4 events	287	321	306	284	272	614
	1%	1%	1%	1%	1%	1%
grade 5 events	927	995	925	1091	1089	2151
	4%	4%	3%	4%	4%	6%
grade 6 events	538	695	498	553	685	8047
	2%	3%	1%	2%	2%	23%
grade 7 events	17984	17831	21773	18265	20610	17987
	78%	77%	81%	78%	80%	53%

## 2.2 Compared Parameters

Parameter	Planned	Actual	Parameter	Planned	Actual
Instrument	ACIS	ACIS	Obspar format version number	6	6
Detector	ACIS-012367	ACIS-012367	Obspar file type	PREDICTED	ACTUAL
Grating	NONE	NONE	Obspar update status	NONE	UPDATED
Data mode	FAINT	FAINT	On-chip summing requested	N	N
Observation mode	POINTING	POINTING	Subarray requested	NONE	NONE
Pointing RA	321.025732	321.0472480896789	Alternating exposures requested	N	N
Pointing Dec	-12.865058	-12.88258129248662	Primary exposure time	0.000000	3.2
Pointing Roll	289.477232	289.6906726423108			
SIM focus pos (mm)	-0.782348	-0.7809083437167272			
SIM defocus (mm)	0	0.001439871863259334			
SIM translation stage pos (mm)	-233.592463	-233.5874344608287			
SIM translation stage offset (mm)	0	-0.005018542100998502			
Observation start time	219306053.184000	219304973.56404			
Observation start date	2004-12-13T06:19:49	2004-12-13T06:02:53			
Observation end time	219309053.184000	219310419.90179			
Observation end date	2004-12-13T07:09:49	2004-12-13T07:33:39			
Read mode	TIMED	TIMED			

2.3 Aspect





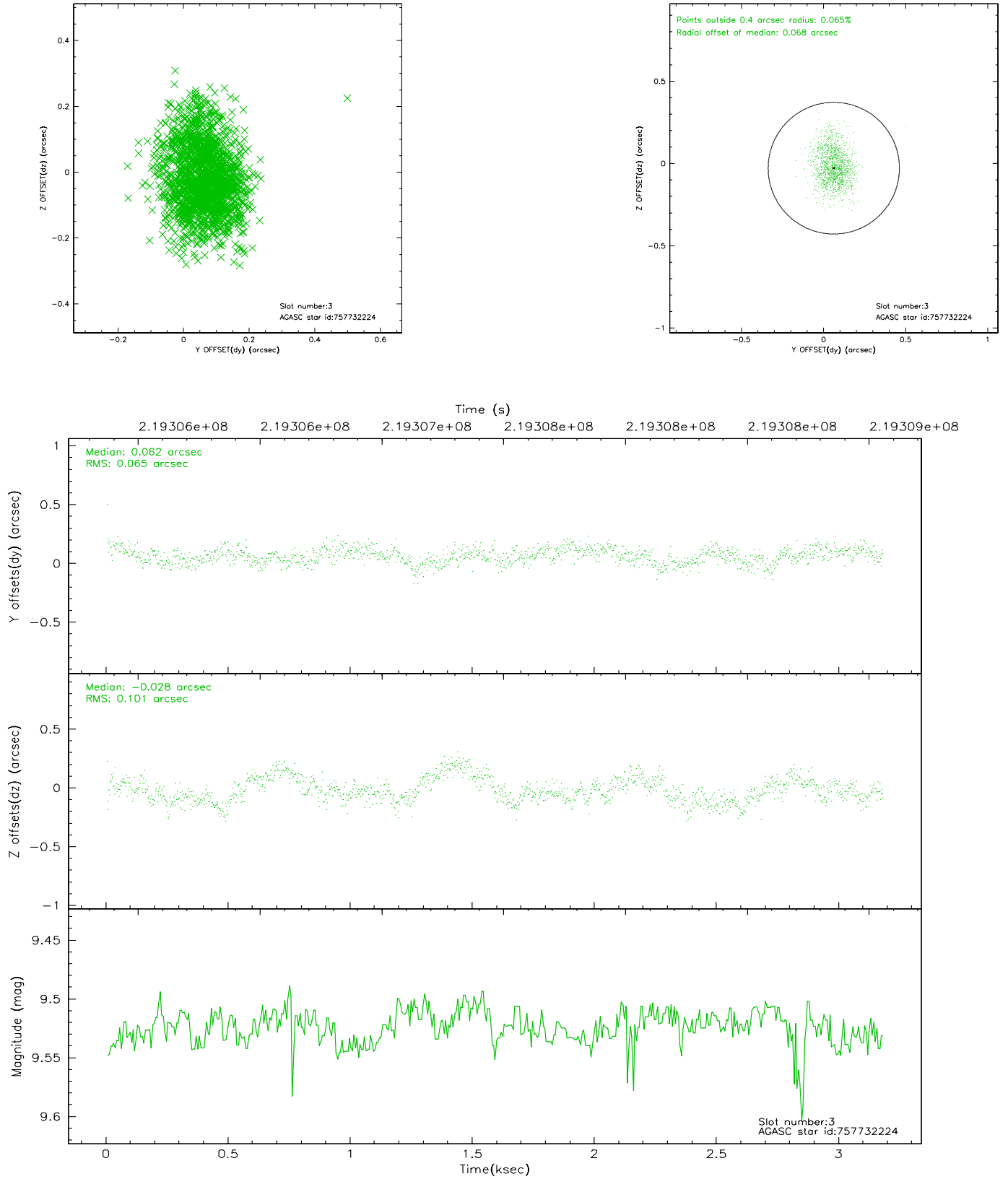
### Slot Statistics

slot	status	id	mag	n_pts	med_dy	med_dz	dr1	dr2	ra	dec	mean_y	mean_z
0	FID	ACIS-I-1	7.24	775	0.032	0.003	0.007	0.012	0.000000	0.000000	932.38	-835.32
1	FID	ACIS-I-5	7.23	775	-0.149	0.057	0.006	0.012	0.000000	0.000000	-1814.75	1061.28
2	FID	ACIS-I-6	7.25	775	0.026	0.010	0.008	0.013	0.000000	0.000000	395.80	1707.96
3	GUIDE	757732224	9.52	1547	0.062	-0.028	0.125	0.213	321.353233	-12.547654	-692.31	1465.56
4	GUIDE	757732672	9.12	1547	0.145	0.003	0.148	0.216	320.736756	-12.767141	-669.40	-838.55
5	GUIDE	758258008	9.33	1549	0.050	-0.011	0.150	0.226	320.564173	-13.429101	1377.67	-2201.63
6	GUIDE	758261352	7.52	1550	0.010	0.060	0.064	0.102	320.837098	-13.513417	1982.33	-1402.06
7	GUIDE	757732536	9.39	1547	-0.270	-0.025	0.101	0.167	320.458395	-12.367680	-2349.31	-1285.79

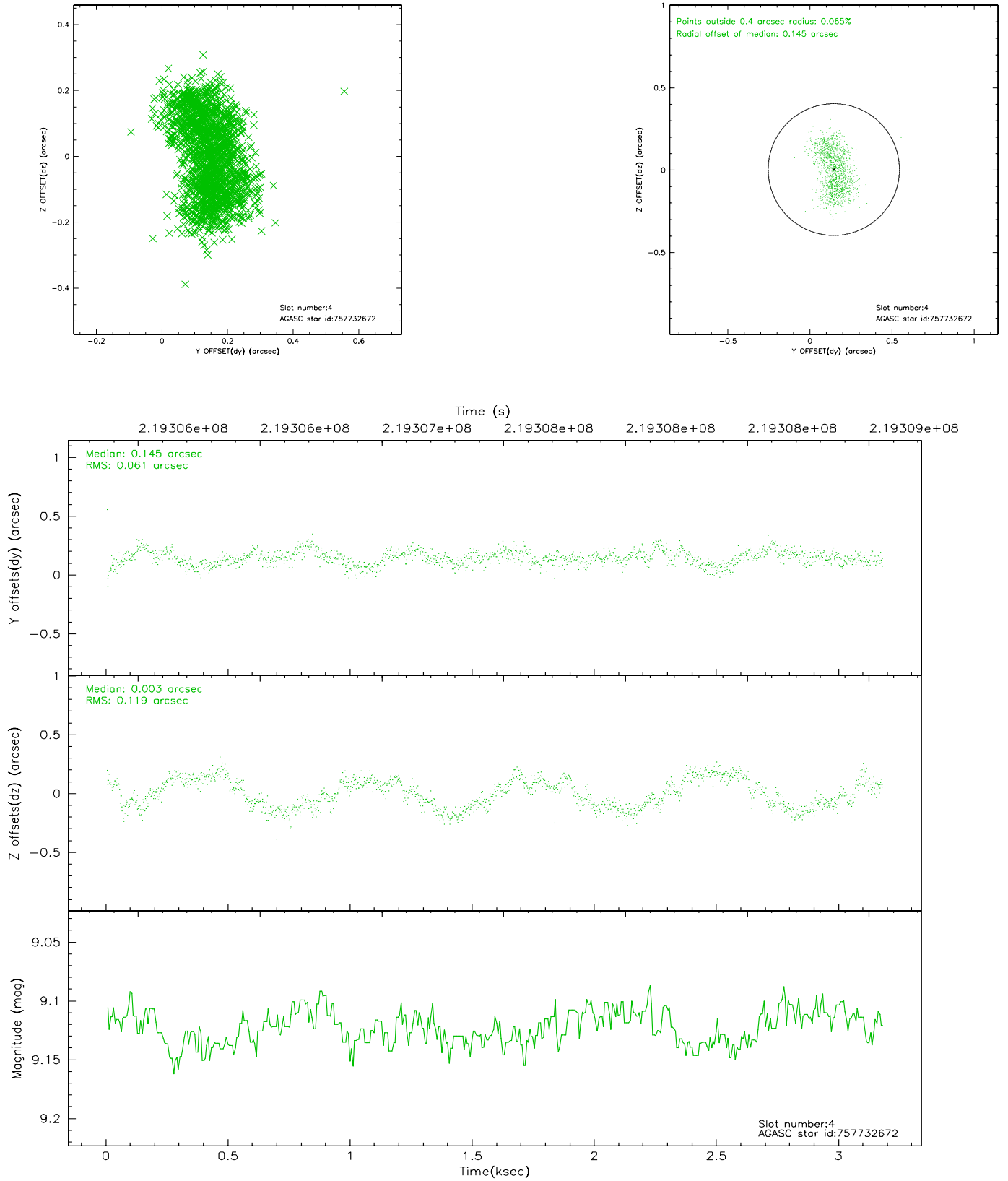


## 2.4 Star Slots

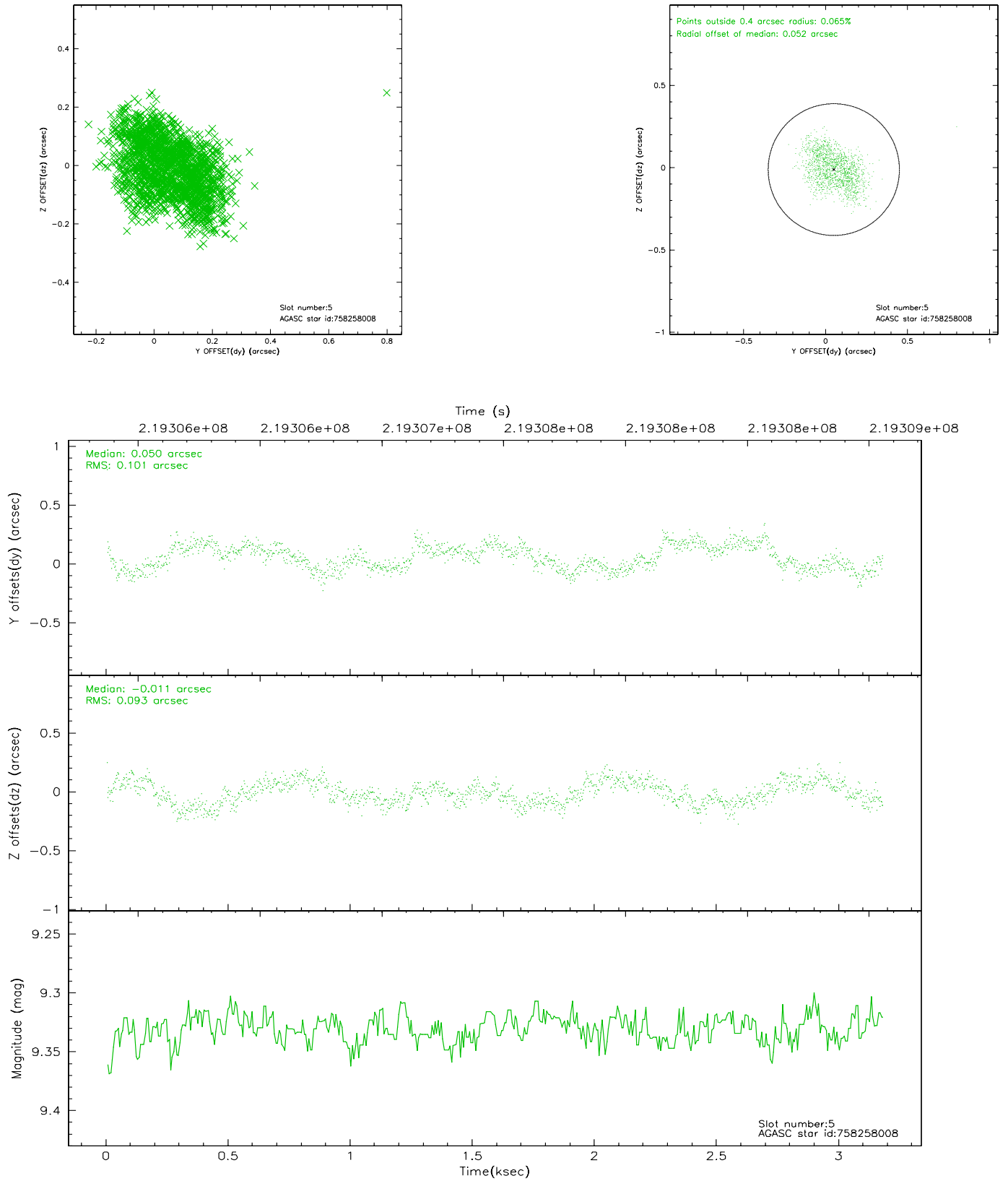
### 2.4.1 Slot 3



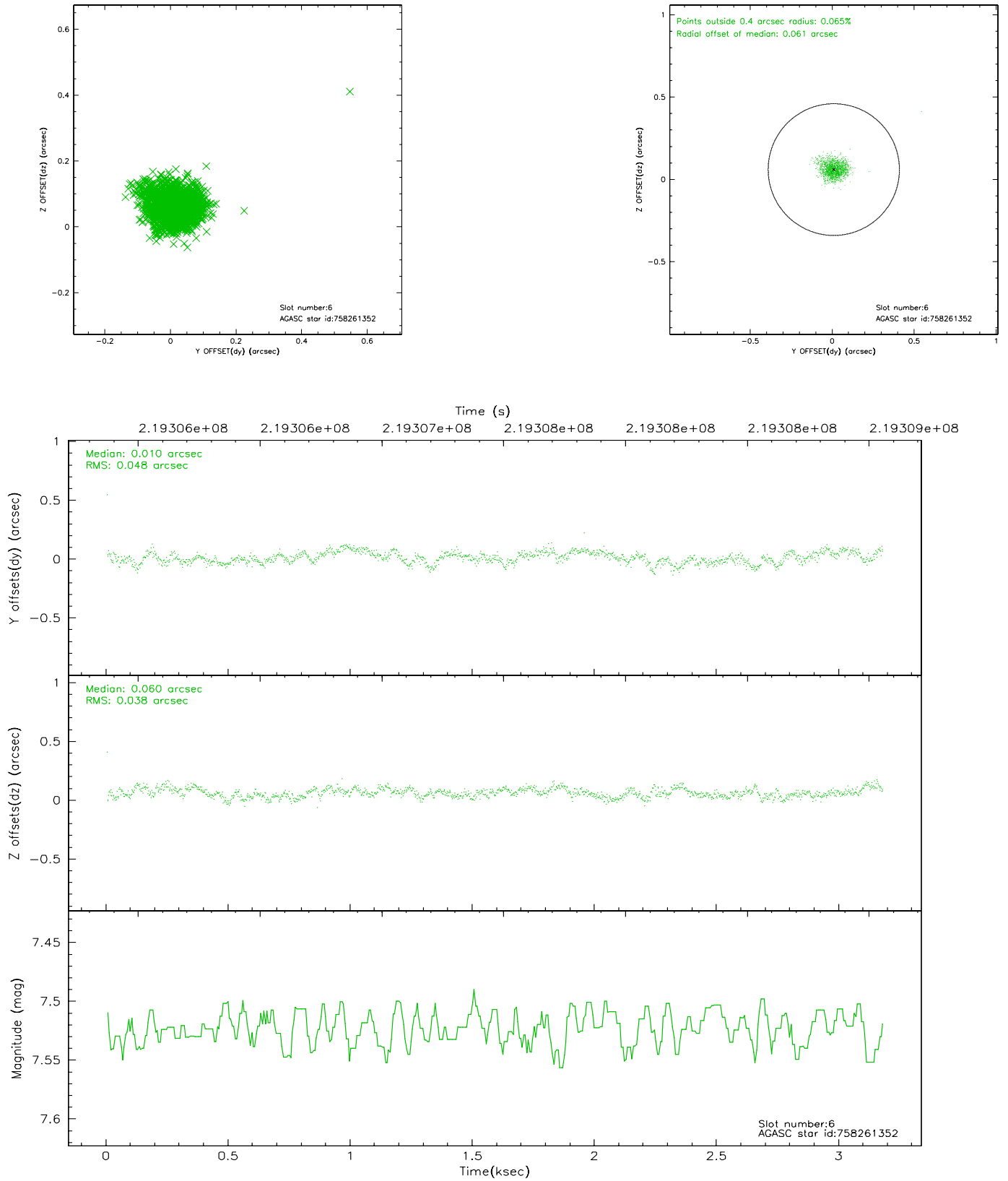
## 2.4.2 Slot 4



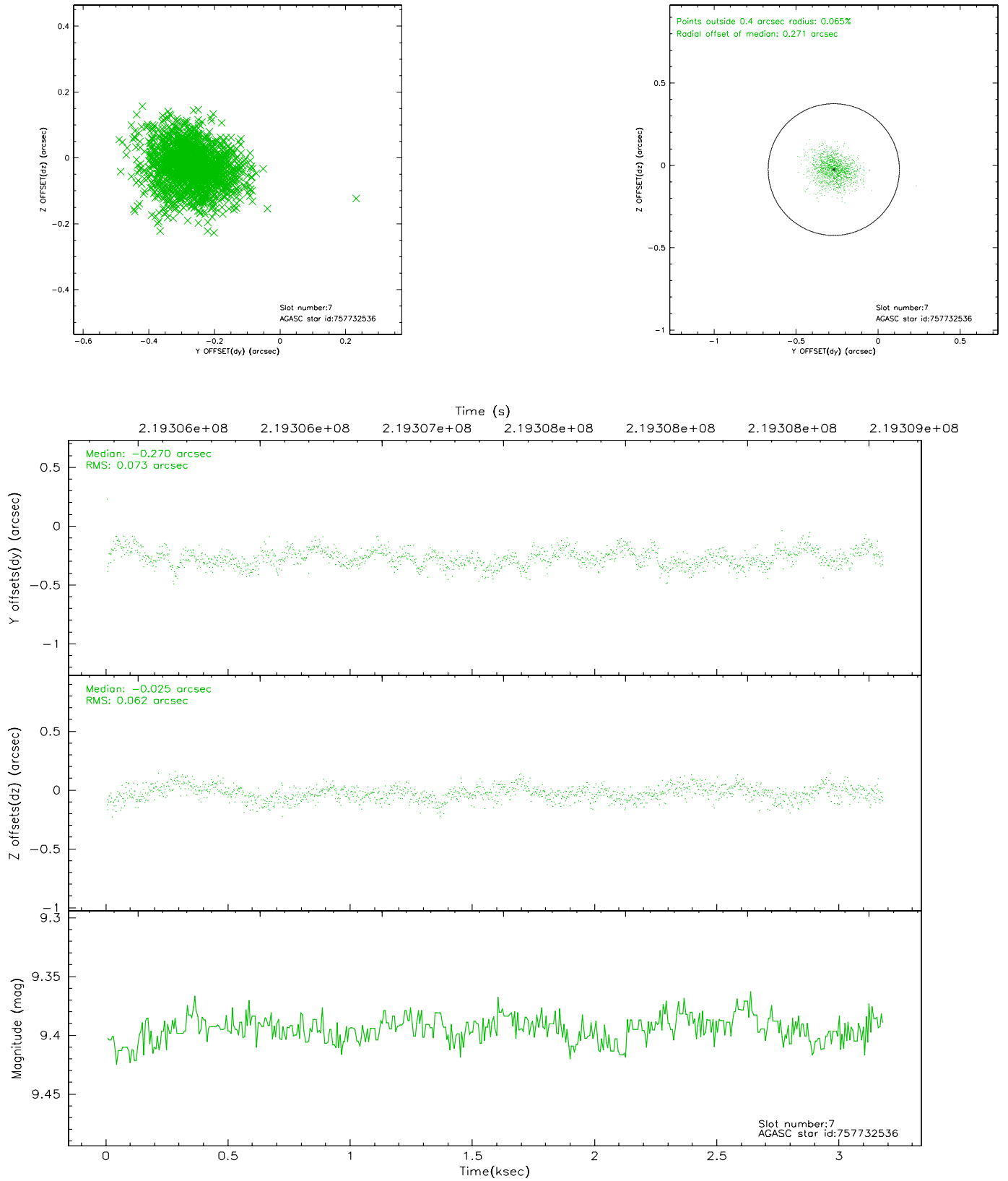
### 2.4.3 Slot 5



## 2.4.4 Slot 6

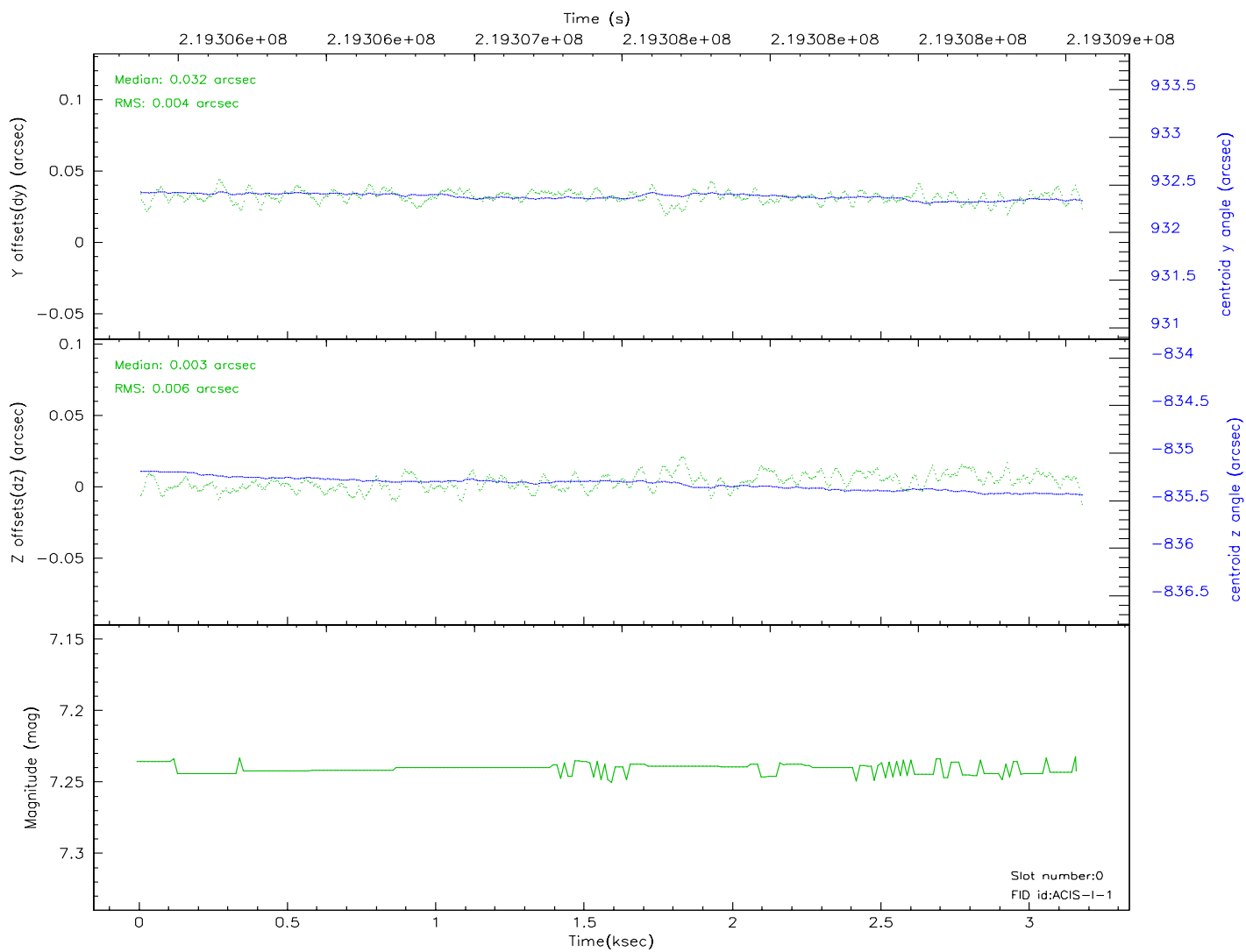
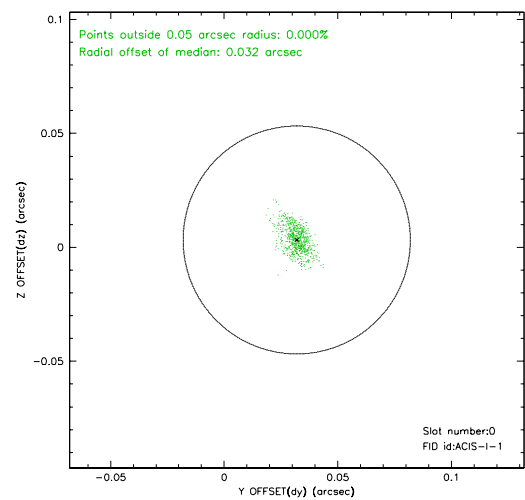
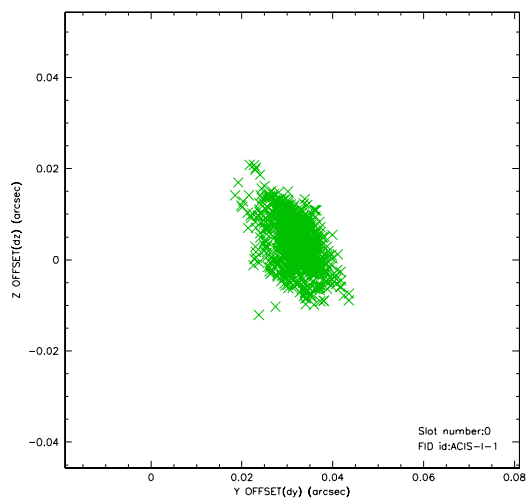


## 2.4.5 Slot 7

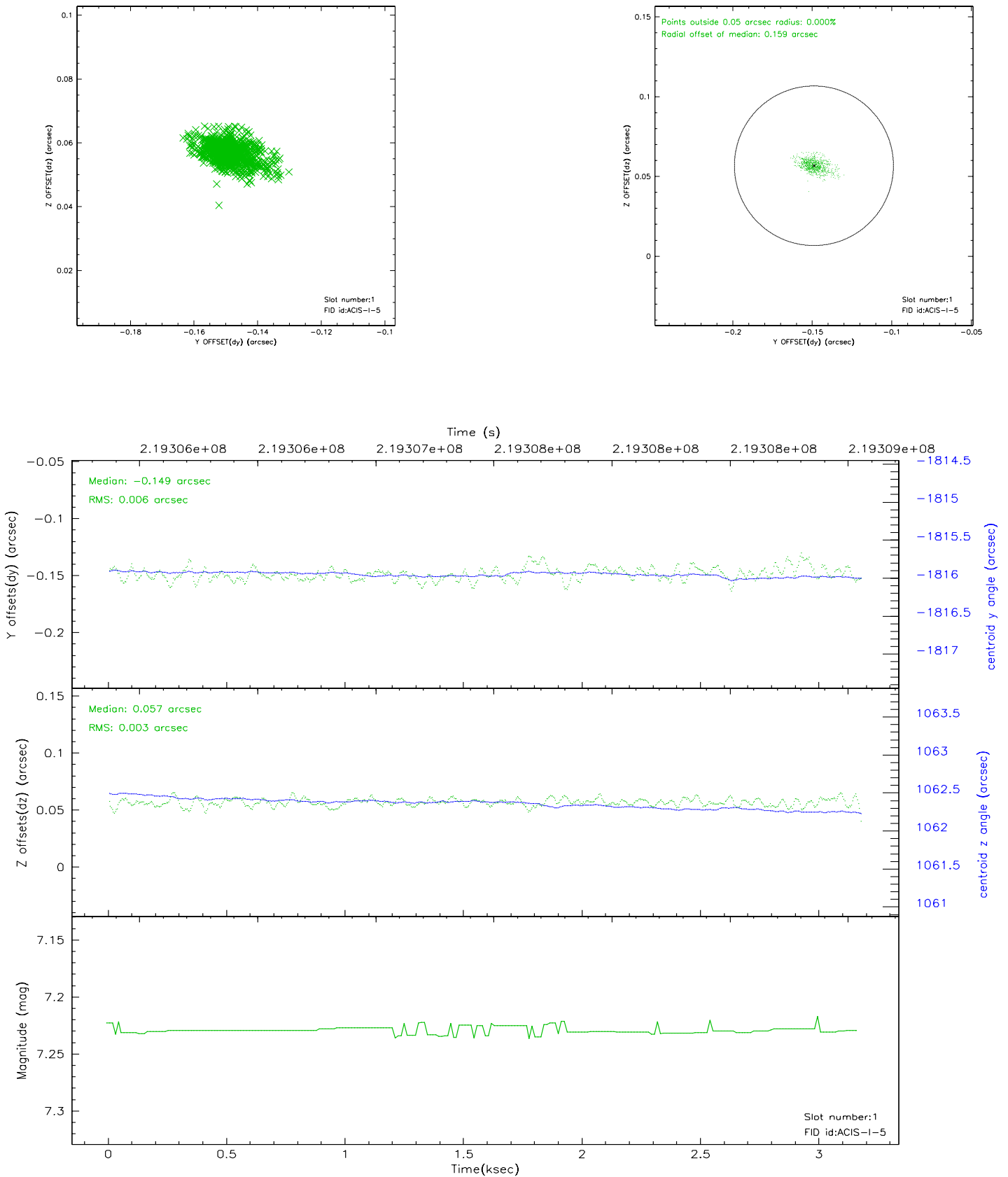


## 2.5 FID Slots

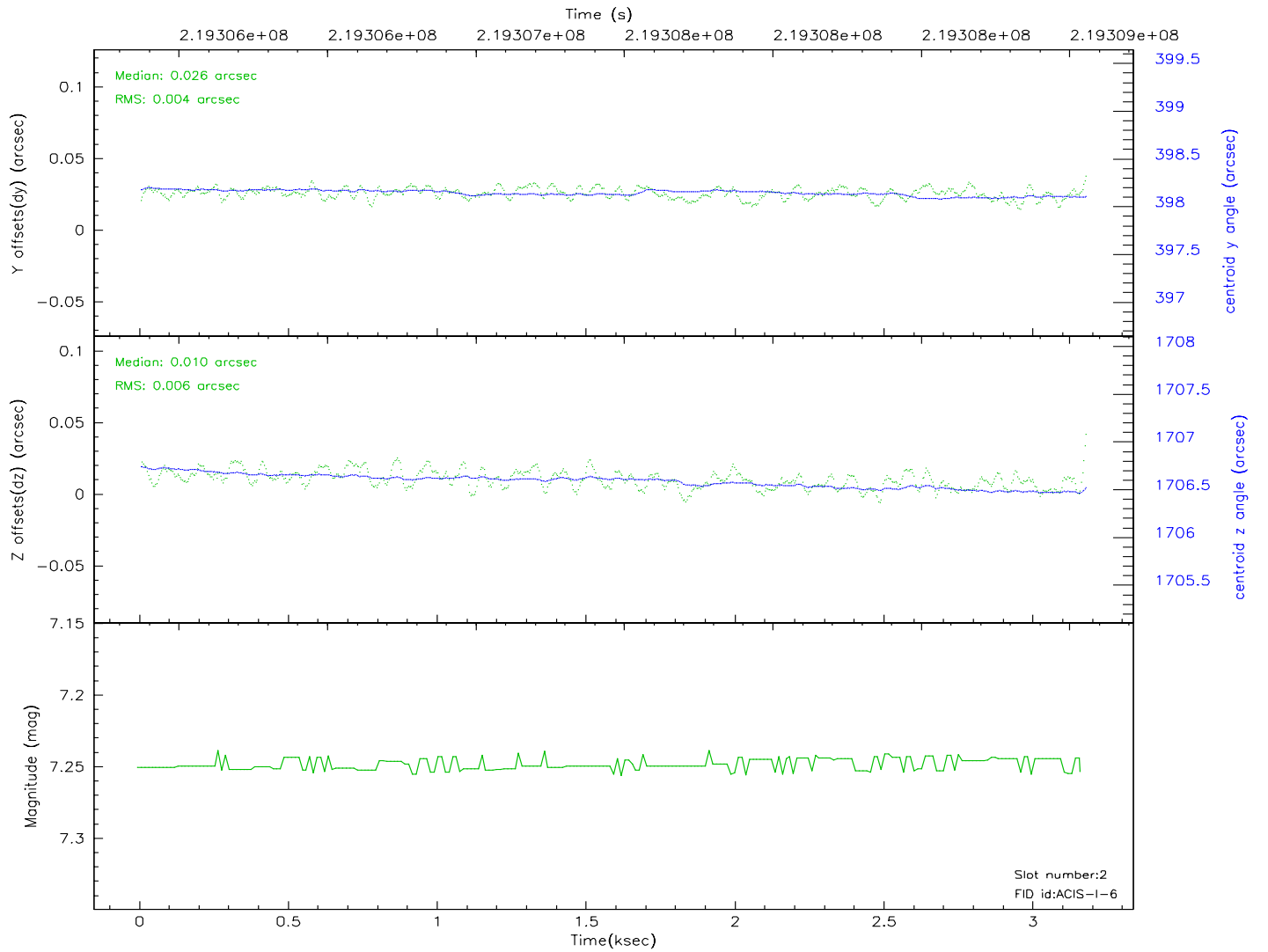
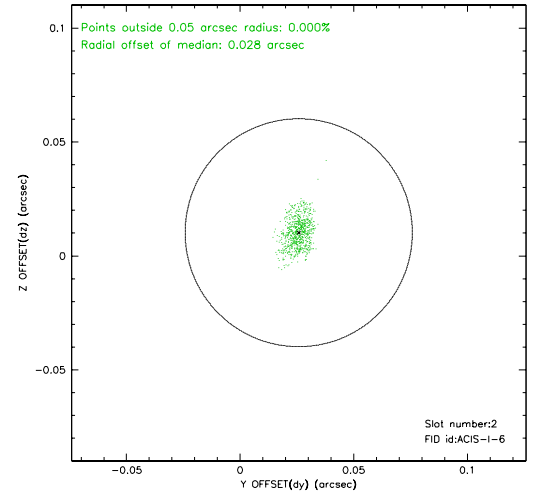
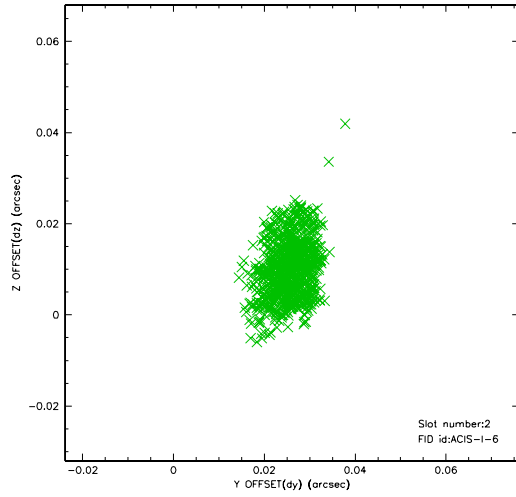
### 2.5.1 Slot 0



## 2.5.2 Slot 1

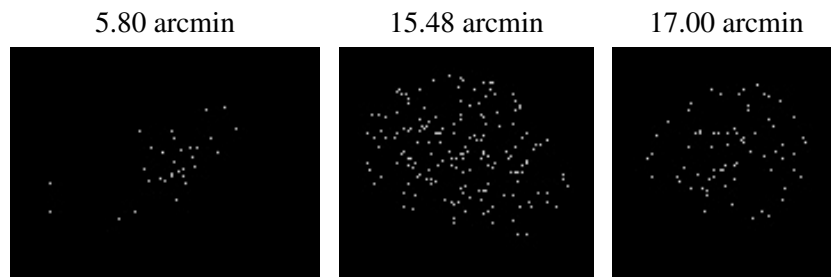


### 2.5.3 Slot 2





### 3 Point Sources



## A Summary

### A.1 Status

V&V Scientist	Beth Sundheim
V&V Date (YYYY-MM-DD)	2006.04.10
V&V Edition	1
V&V Disposition and Status	OK
V&V Charge Time	3.171199

### A.2 Comments