

# V&V Reference Report

## L2 ASCDS Version : 8.5.1.1

Observation 6333 - L2 Version 3  
Chandra X-Ray Center

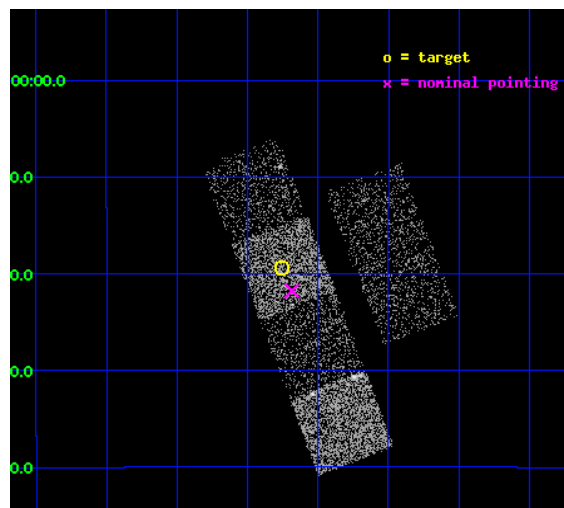
L2 Processing Date : Dec 25 2012

## Contents

<b>1</b>	<b>Front</b>	<b>2</b>
<b>2</b>	<b>OBI</b>	<b>3</b>
2.1	OBI . . . . .	3
2.1.1	Images . . . . .	3
2.1.2	Bias . . . . .	3
2.1.3	Parameters . . . . .	4
2.1.4	Events . . . . .	4
2.2	Compared Parameters . . . . .	5
2.3	Aspect . . . . .	6
2.4	Star Slots . . . . .	9
2.4.1	Slot 3 . . . . .	9
2.4.2	Slot 4 . . . . .	10
2.4.3	Slot 5 . . . . .	11
2.4.4	Slot 6 . . . . .	12
2.4.5	Slot 7 . . . . .	13
2.5	FID Slots . . . . .	14
2.5.1	Slot 0 . . . . .	14
2.5.2	Slot 1 . . . . .	15
2.5.3	Slot 2 . . . . .	16
<b>A</b>	<b>Summary</b>	<b>17</b>
A.1	Status . . . . .	17
A.2	Comments . . . . .	17

# 1 Front

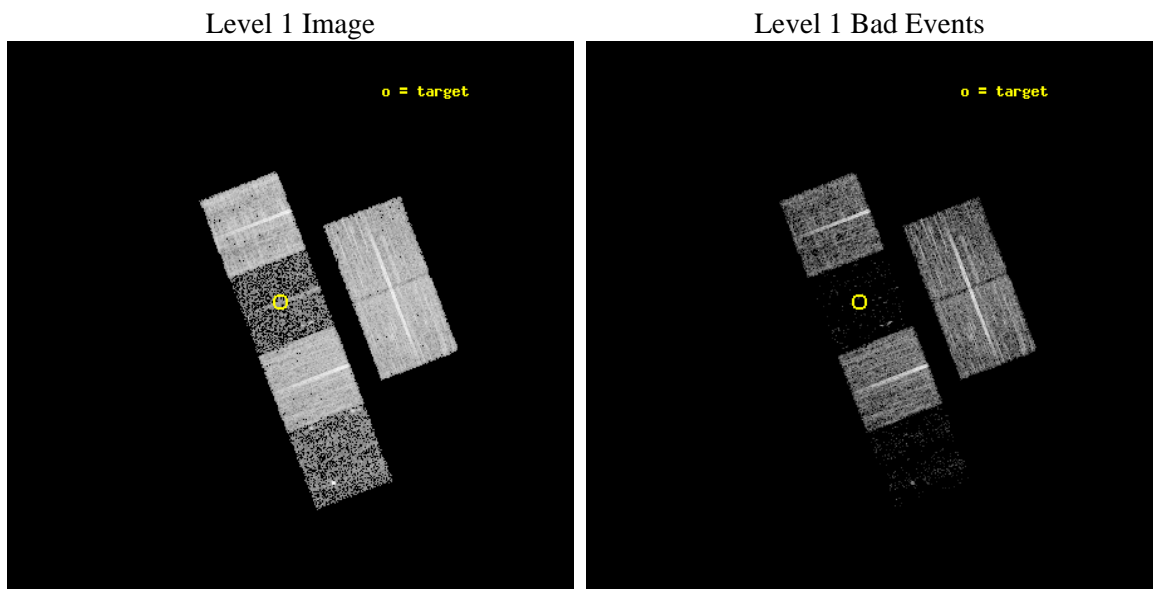
seq_num	100055	Sequence number
obs_id	6333	Observation id
title	Comet 9P/Tempel 1 During the Deep Impact Encounter	Proposal title
observer	Dr. Carey Lisse	Principal investigator
object	9P/Tempel 1	Source name
dtcycle	0	&#160
cycle	P	events from which exps? Prim/Second/Both
ra_targ	205.313443	Observer's specified target RA [deg]
dec_targ	-10.323565	Observer's specified target Dec [deg]
ra_nom	205.29616333713	Nominal RA [deg]
dec_nom	-10.362984379387	Nominal Dec [deg]
roll_nom	249.07752400678	Nominal Roll [deg]
revision	3	Processing version of data
ontime	8086.3999698758	Sum of GTIs [s]
livetime	7984.0051044117	Livetime [s]
ontime2	8086.3999698758	Sum of GTIs [s]
ontime3	8086.3999698758	Sum of GTIs [s]
ontime5	8086.3999698758	Sum of GTIs [s]
ontime6	8086.3999698758	Sum of GTIs [s]
ontime7	8086.3999698758	Sum of GTIs [s]
ontime8	8086.3999698758	Sum of GTIs [s]
l2events	11314	Number of level 2 events



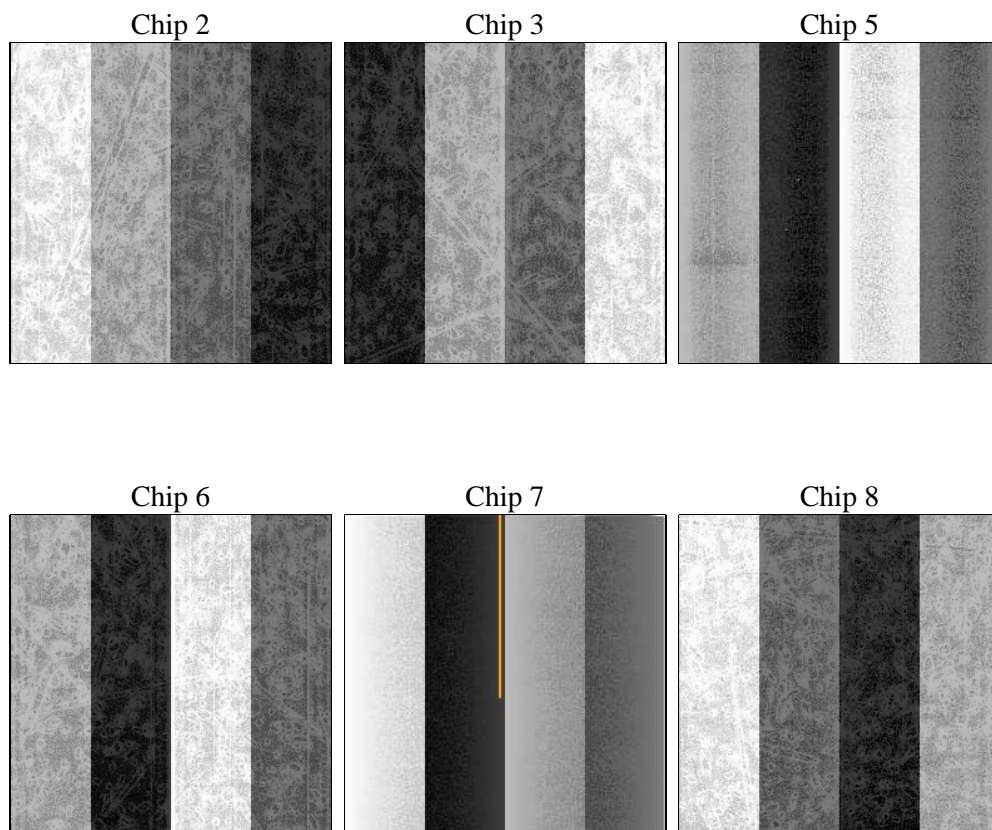
## 2 OBI

### 2.1 OBI

#### 2.1.1 Images



#### 2.1.2 Bias



### 2.1.3 Parameters

obi_num	0	Obi number	sched_exp_time	7900.000000	[s] Scheduled observation exposure time
ascdsver	8.5.1.1	Processing system revision	ontime	8086.3999698758	Sum of GTIs [s]
caldsver	4.5.5	&#160	ontime2	8086.3999698758	Sum of GTIs [s]
date	2012-12-25T21:23:48	Date and time of file creation	ontime3	8086.3999698758	Sum of GTIs [s]
revision	3	Processing version of data	ontime5	8086.3999698758	Sum of GTIs [s]
			ontime6	8086.3999698758	Sum of GTIs [s]
			ontime7	8086.3999698758	Sum of GTIs [s]
			ontime8	8086.3999698758	Sum of GTIs [s]
			l1events	171027	Number of level 1 events

### 2.1.4 Events

	ccd 2	ccd 3	ccd 5	ccd 6	ccd 7	ccd 8
level 1 events	43181	35995	7155	38742	5187	40767
rejected events	41449	34803	2254	37076	1295	30696
rejected %	95%	96%	31%	95%	24%	75%

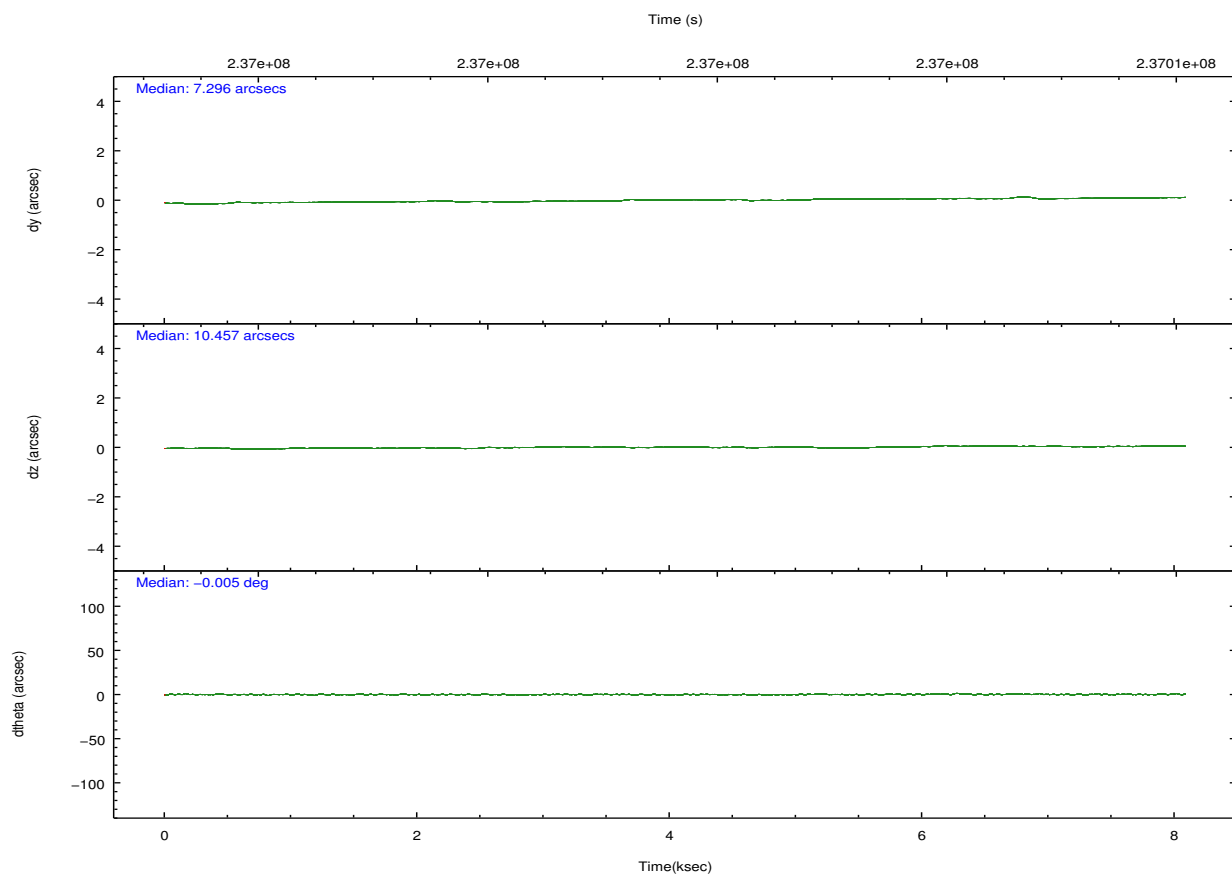
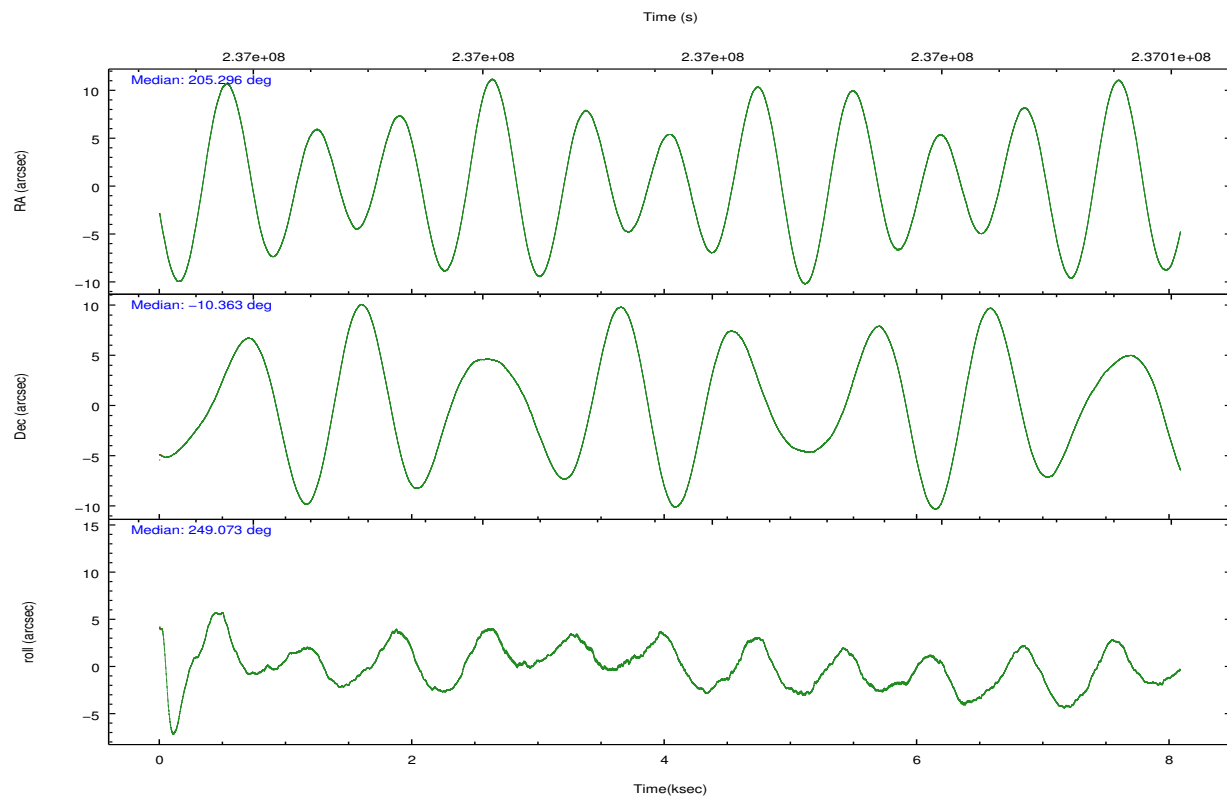
	ccd 2	ccd 3	ccd 5	ccd 6	ccd 7	ccd 8
grade 0 events	689	560	1553	787	1055	2888
	1%	1%	21%	2%	20%	7%
grade 1 events	6	10	108	13	25	19
	0%	0%	1%	0%	0%	0%
grade 2 events	442	151	1921	324	1370	2248
	1%	0%	26%	0%	26%	5%
grade 3 events	232	221	569	233	571	1242
	0%	0%	7%	0%	11%	3%
grade 4 events	290	191	545	258	556	1181
	0%	0%	7%	0%	10%	2%
grade 5 events	48	47	362	30	121	197
	0%	0%	5%	0%	2%	0%
grade 6 events	148	114	534	127	495	2839
	0%	0%	7%	0%	9%	6%
grade 7 events	41326	34701	1563	36970	994	30153
	95%	96%	21%	95%	19%	73%



## 2.2 Compared Parameters

Parameter	Planned	Actual	Parameter	Planned	Actual
Instrument	ACIS	ACIS	Obspar format version number	7	7
Detector	ACIS-235678	ACIS-235678	Obspar file type	PREDICTED	ACTUAL
Grating	NONE	NONE	Obspar update status	NONE	UPDATED
Data mode	VFAINT	VFAINT	Number of optional ACIS chips dropped	0	0
Observation mode	POINTING	POINTING	On-chip summing requested	N	N
[deg] Pointing RA	205.291479	205.2961633371263	Subarray requested	NONE	NONE
[deg] Pointing Dec	-10.336143	-10.36298437938655	Alternating exposures requested	N	N
[deg] Pointing Roll	248.920054	249.0775240067798	[s] Primary exposure time	0.000000	3.2
[s] Window start time (MET)	236966464.184000	236966464.184000			
[s] Window stop time (MET)	237031264.184000	237031264.184000			
[mm] SIM focus pos	-0.684267	-0.6828225247311905			
[mm] SIM defocus	0	0.001444936568705701			
[mm] SIM translation stage pos	-190.132523	-190.1400660498719			
[mm] SIM translation stage offset	0	0.00754346686406393			
[s] Observation start time (MET)	236997776.184000	236997400.45432			
Observation start date	2005-07-06T00:41:52	2005-07-06T00:36:40			
[s] Observation end time (MET)	237005676.184000	237005810.06721			
Observation end date	2005-07-06T02:53:32	2005-07-06T02:56:50			
Read mode	TIMED	TIMED			

## 2.3 Aspect

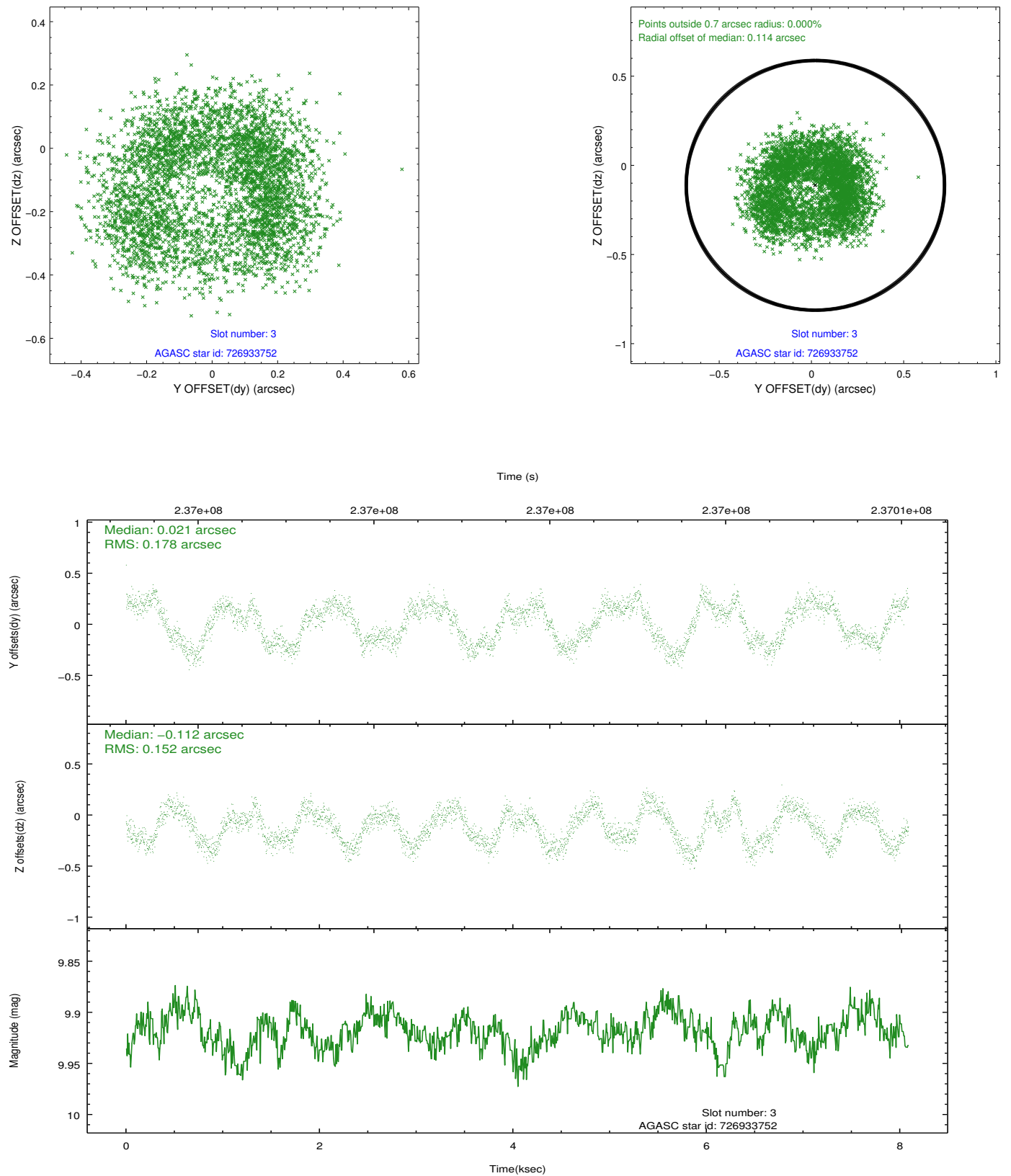


### Slot Statistics

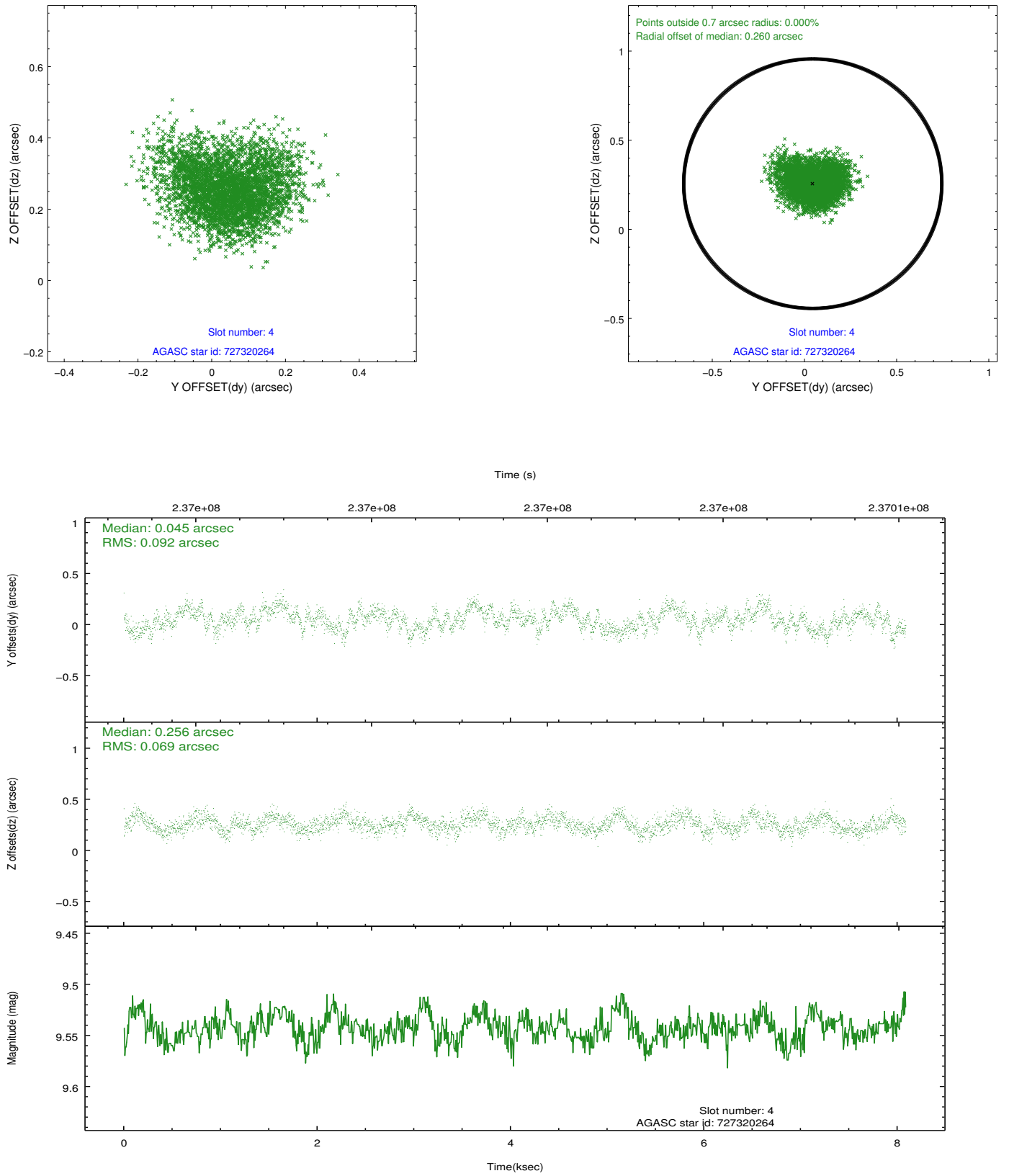
slot	status	id	mag	n_pts	med_dy	med_dz	dr1	dr2	ra	dec	mean_y	mean_z
0	FID	ACIS-S-2	7.10	1973	-0.056	-0.024	0.012	0.022	0.000000	0.000000	-760.06	-1731.75
1	FID	ACIS-S-4	7.20	1973	0.112	0.034	0.013	0.028	0.000000	0.000000	2153.02	176.13
2	FID	ACIS-S-5	7.23	1973	-0.085	-0.002	0.009	0.017	0.000000	0.000000	-1812.09	170.47
3	GUIDE	726933752	9.92	3941	0.021	-0.112	0.257	0.358	205.376260	-9.946078	-1418.13	-224.74
4	GUIDE	727320264	9.54	3944	0.045	0.256	0.125	0.198	205.464326	-10.871323	1577.93	1263.67
5	GUIDE	727320968	9.33	3940	-0.239	0.205	0.112	0.178	205.790359	-10.593418	230.78	1981.42
6	GUIDE	727321088	9.45	3943	0.296	-0.619	0.104	0.164	204.964296	-10.686432	1594.11	-626.20
7	GUIDE	727321928	10.09	3941	-0.112	0.275	0.133	0.213	205.258401	-10.105722	-731.31	-407.66

## 2.4 Star Slots

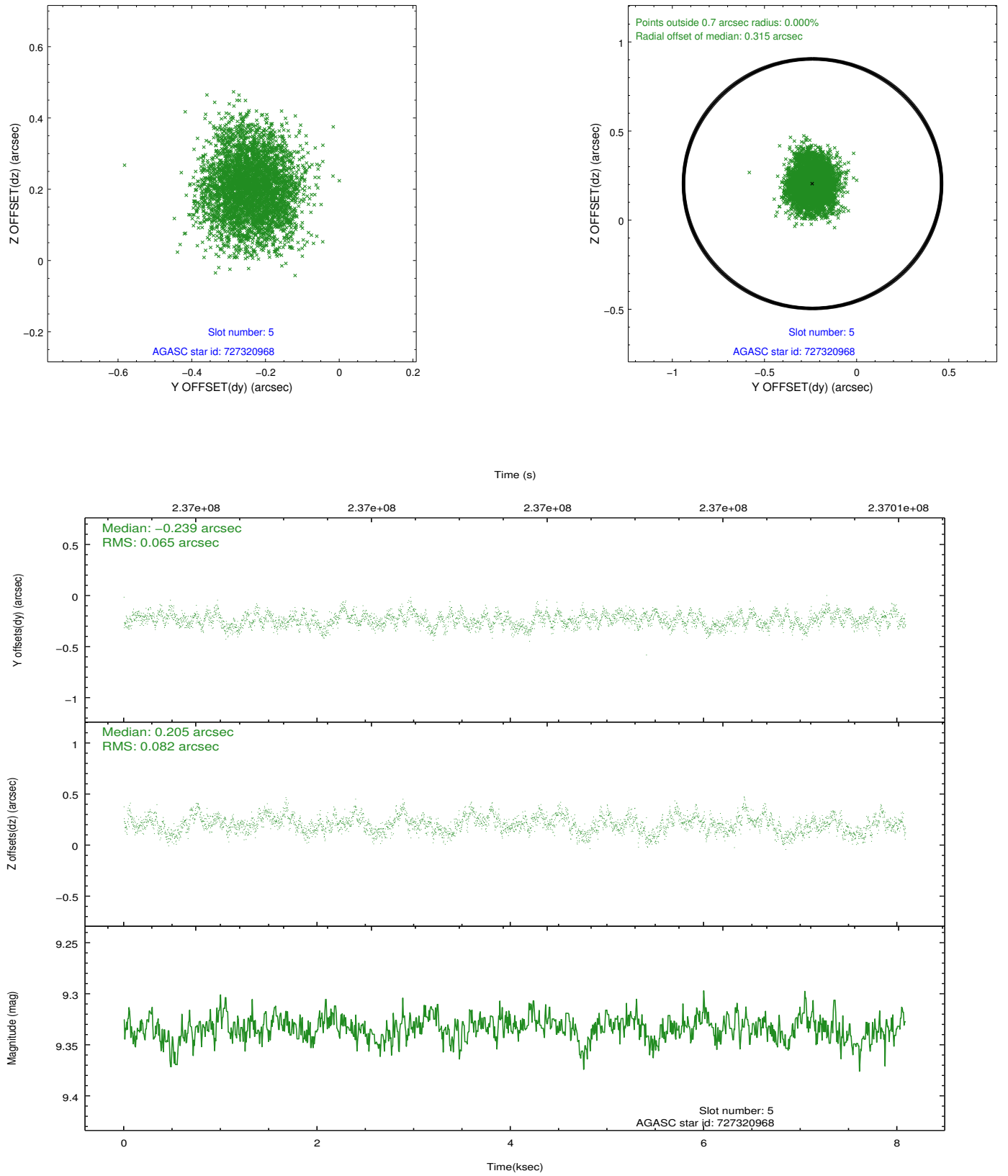
### 2.4.1 Slot 3



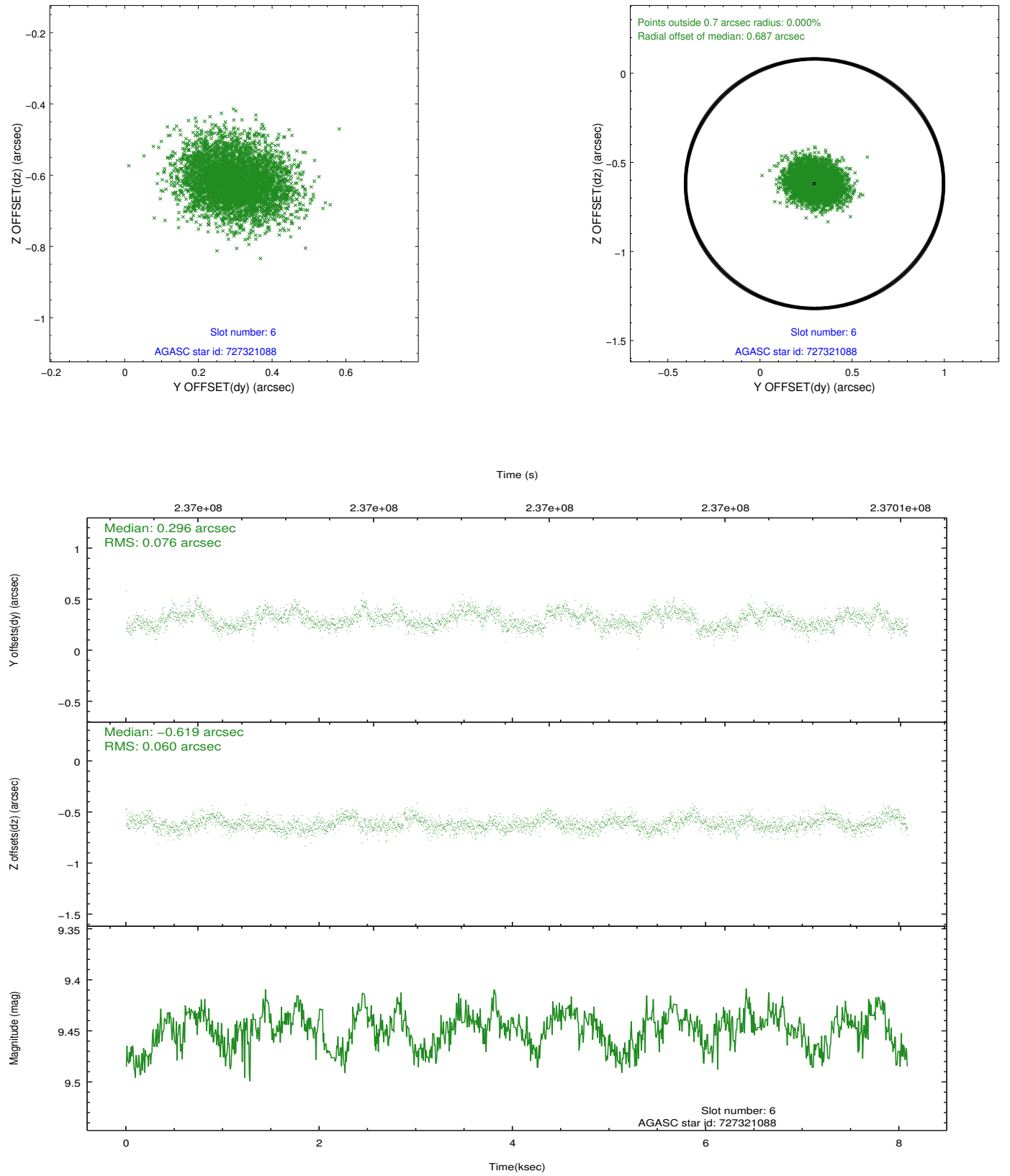
## 2.4.2 Slot 4



### 2.4.3 Slot 5

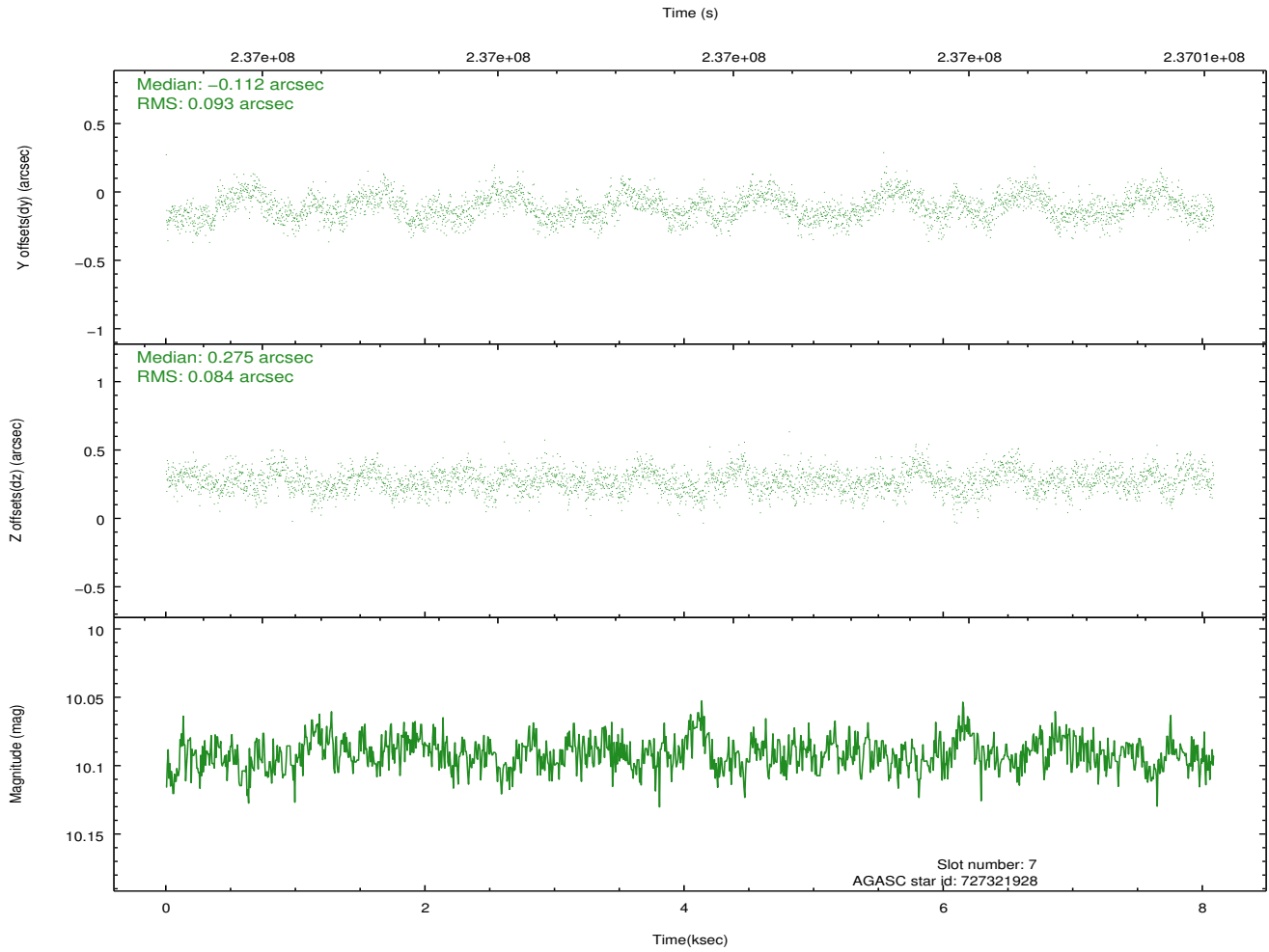
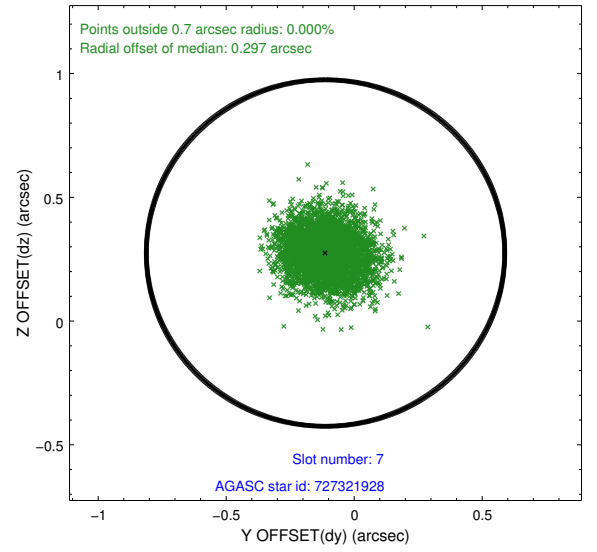
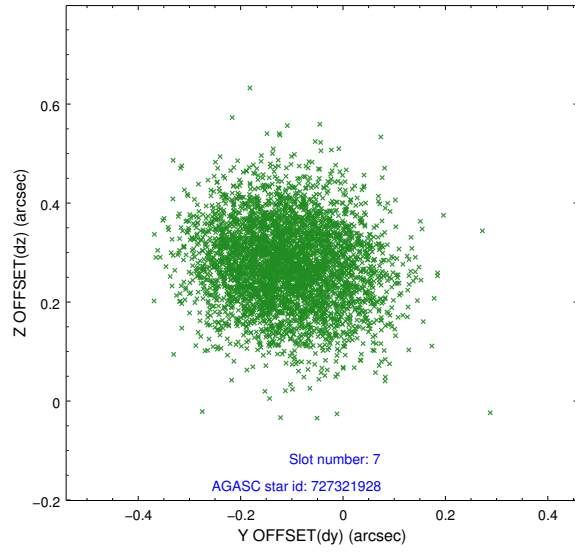


## 2.4.4 Slot 6



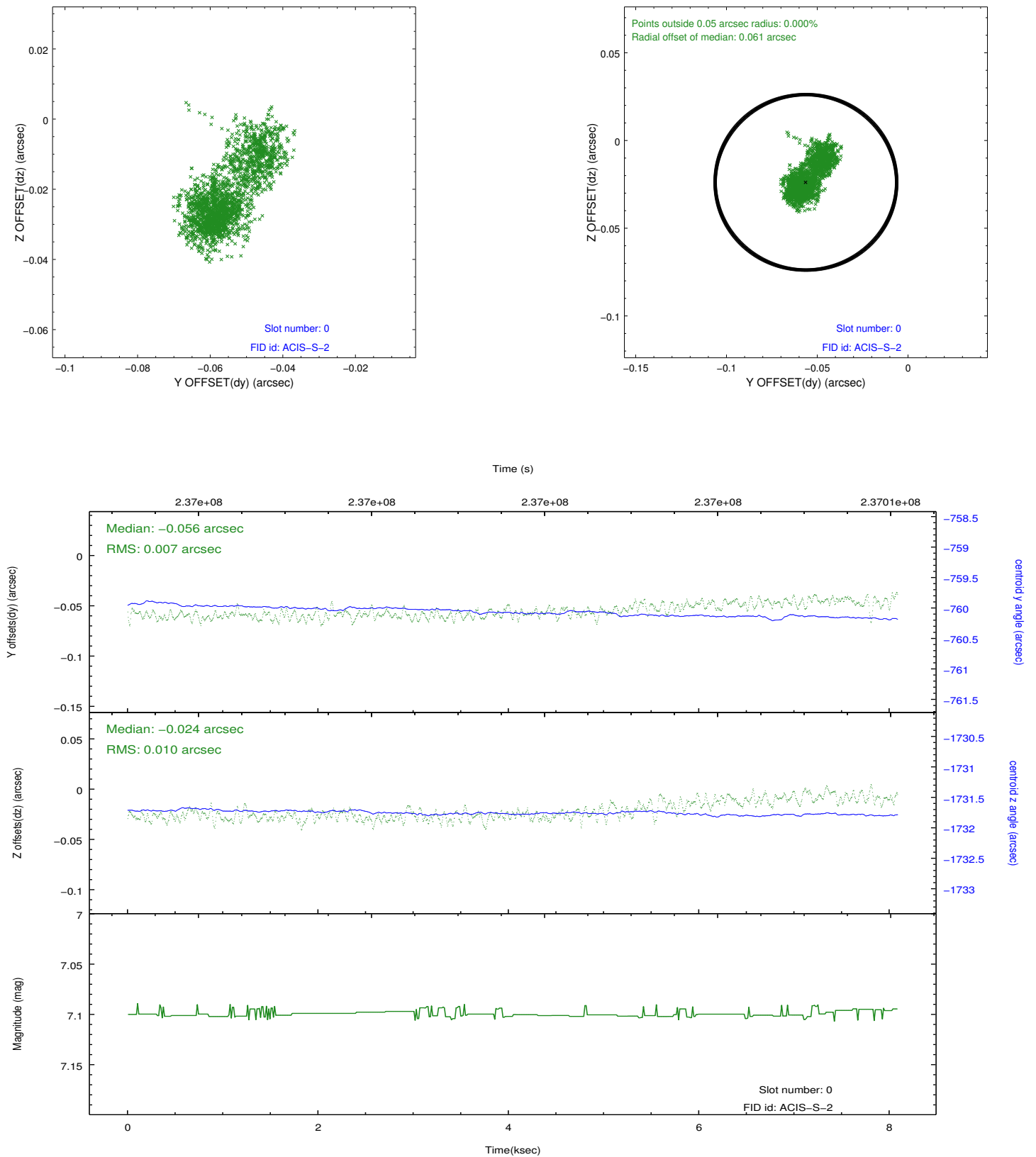


## 2.4.5 Slot 7

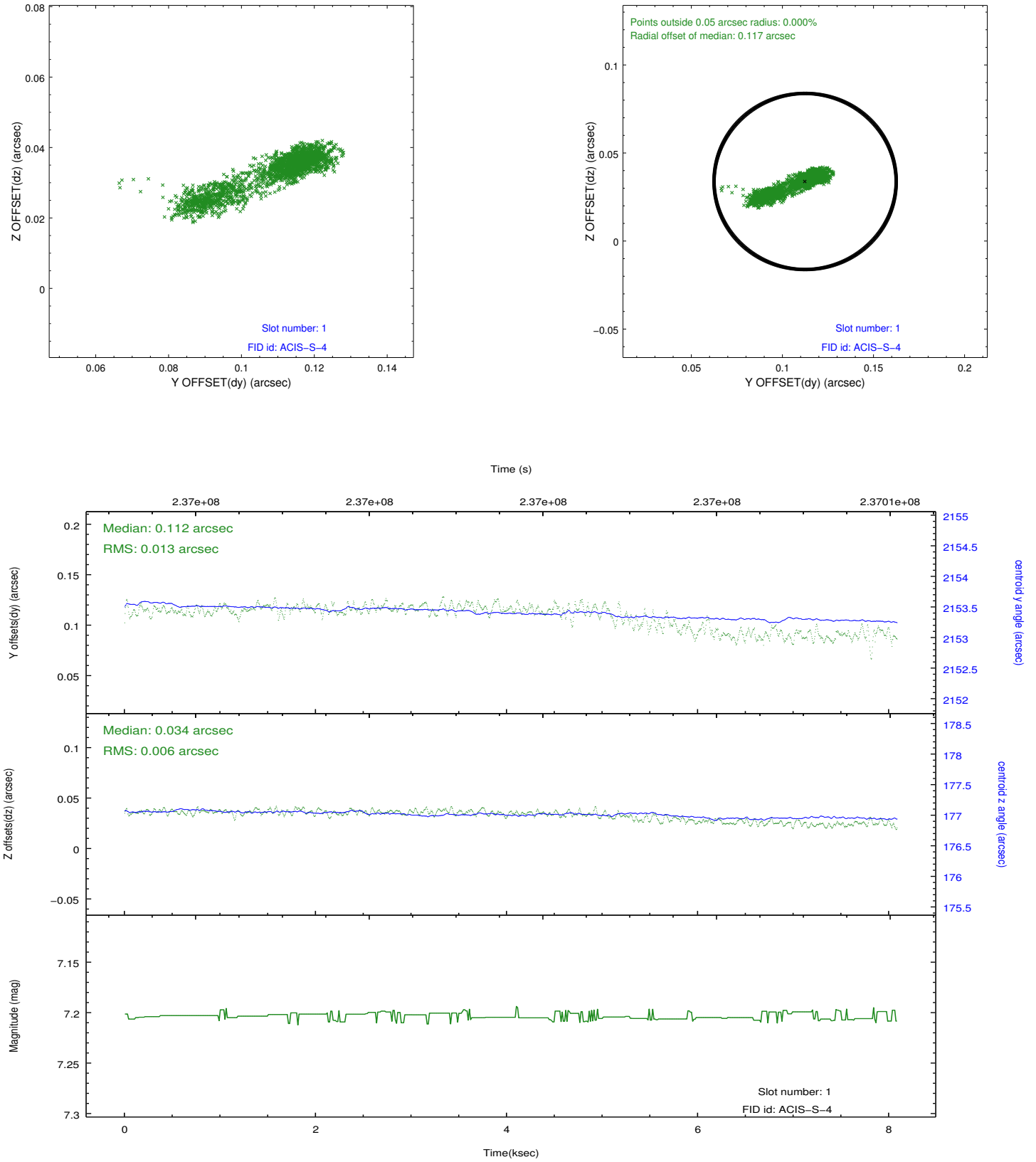


## 2.5 FID Slots

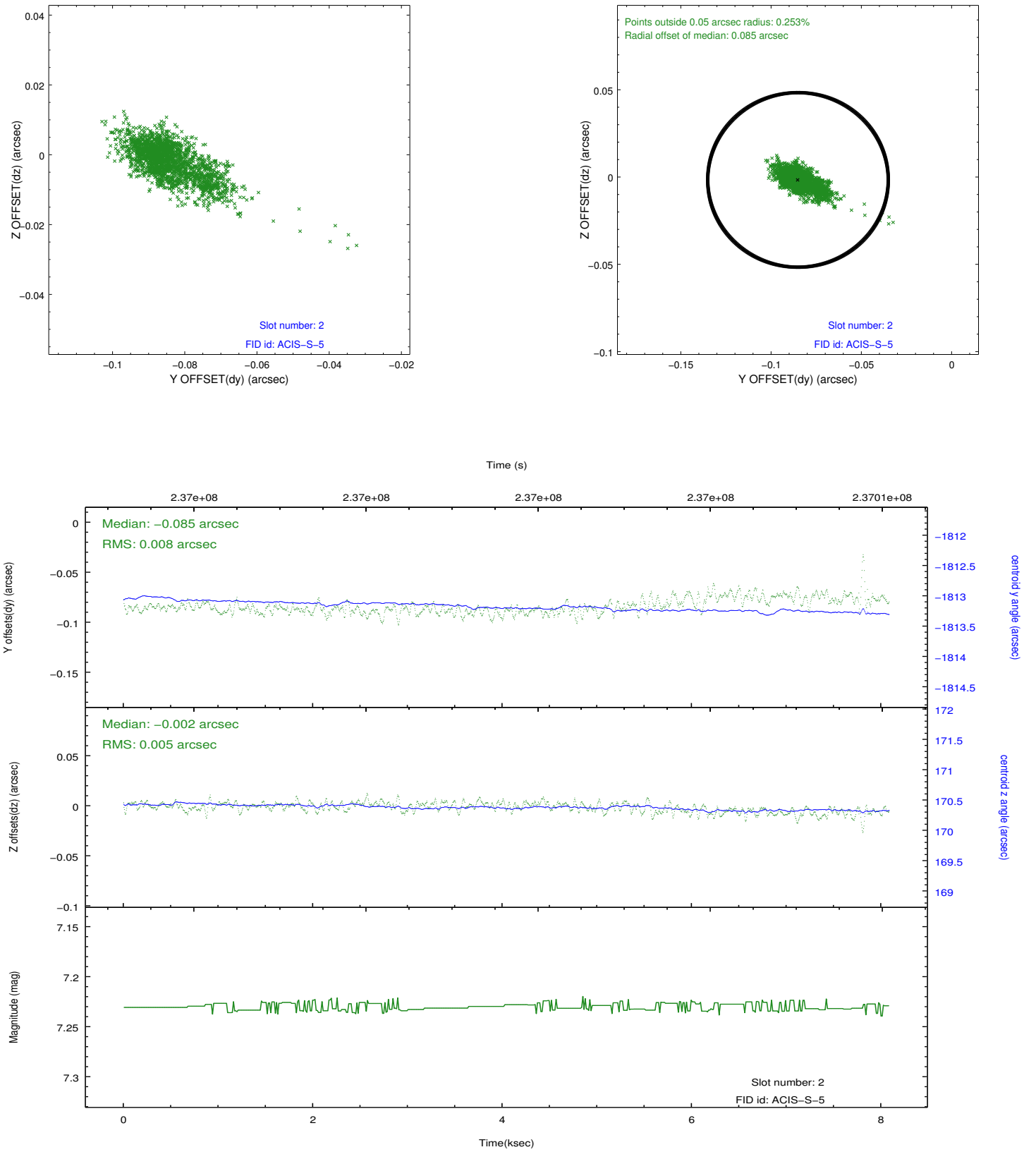
### 2.5.1 Slot 0



## 2.5.2 Slot 1



### 2.5.3 Slot 2



## A Summary

### A.1 Status

V&V Scientist	Beth Sundheim
V&V Date (YYYY-MM-DD)	2013.01.18
V&V Edition	1
V&V Disposition and Status	OK
V&V Charge Time	8.086399

### A.2 Comments

Window preference met.