

# V&V Reference Report

## L2 ASCDS Version : 8.5.1.1

Observation 6325 - L2 Version 3  
Chandra X-Ray Center

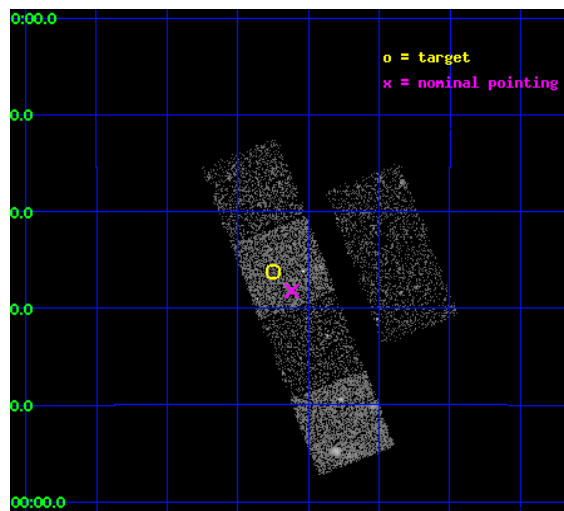
L2 Processing Date : Dec 25 2012

## Contents

<b>1</b>	<b>Front</b>	<b>2</b>
<b>2</b>	<b>OBI</b>	<b>3</b>
2.1	OBI . . . . .	3
2.1.1	Images . . . . .	3
2.1.2	Bias . . . . .	3
2.1.3	Parameters . . . . .	4
2.1.4	Events . . . . .	4
2.2	Compared Parameters . . . . .	5
2.3	Aspect . . . . .	6
2.4	Star Slots . . . . .	9
2.4.1	Slot 3 . . . . .	9
2.4.2	Slot 4 . . . . .	10
2.4.3	Slot 5 . . . . .	11
2.4.4	Slot 6 . . . . .	12
2.4.5	Slot 7 . . . . .	13
2.5	FID Slots . . . . .	14
2.5.1	Slot 0 . . . . .	14
2.5.2	Slot 1 . . . . .	15
2.5.3	Slot 2 . . . . .	16
<b>A</b>	<b>Summary</b>	<b>17</b>
A.1	Status . . . . .	17
A.2	Comments . . . . .	17

# 1 Front

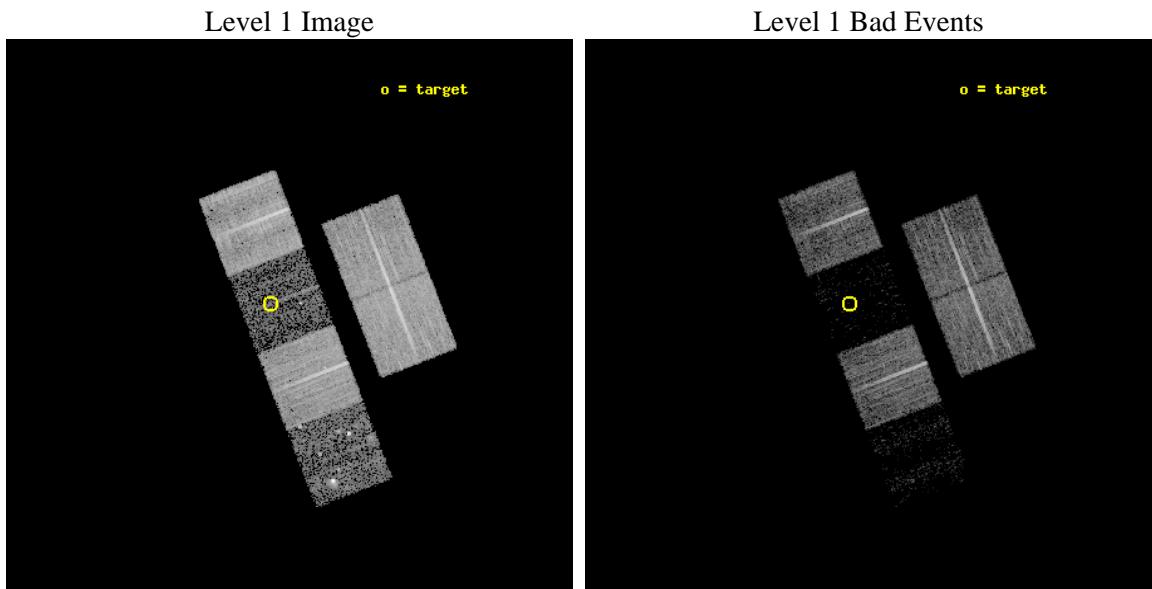
seq_num	100060	Sequence number
obs_id	6325	Observation id
title	Comet 9P/Tempel 1 During the Deep Impact Encounter	Proposal title
observer	Dr. Carey Lisse	Principal investigator
object	9P/Tempel 1	Source name
dtcycle	0	&#160
cycle	P	events from which exps? Prim/Second/Both
ra_targ	204.437451	Observer's specified target RA [deg]
dec_targ	-9.603522	Observer's specified target Dec [deg]
ra_nom	204.40432016736	Nominal RA [deg]
dec_nom	-9.6367951502386	Nominal Dec [deg]
roll_nom	248.83644799021	Nominal Roll [deg]
revision	3	Processing version of data
ontime	10806.399959743	Sum of GTIs [s]
livetime	10669.56281662	Livetime [s]
ontime2	10806.399959743	Sum of GTIs [s]
ontime3	10806.399959743	Sum of GTIs [s]
ontime5	10806.399959743	Sum of GTIs [s]
ontime6	10806.399959743	Sum of GTIs [s]
ontime7	10806.399959743	Sum of GTIs [s]
ontime8	10806.399959743	Sum of GTIs [s]
l2events	16116	Number of level 2 events



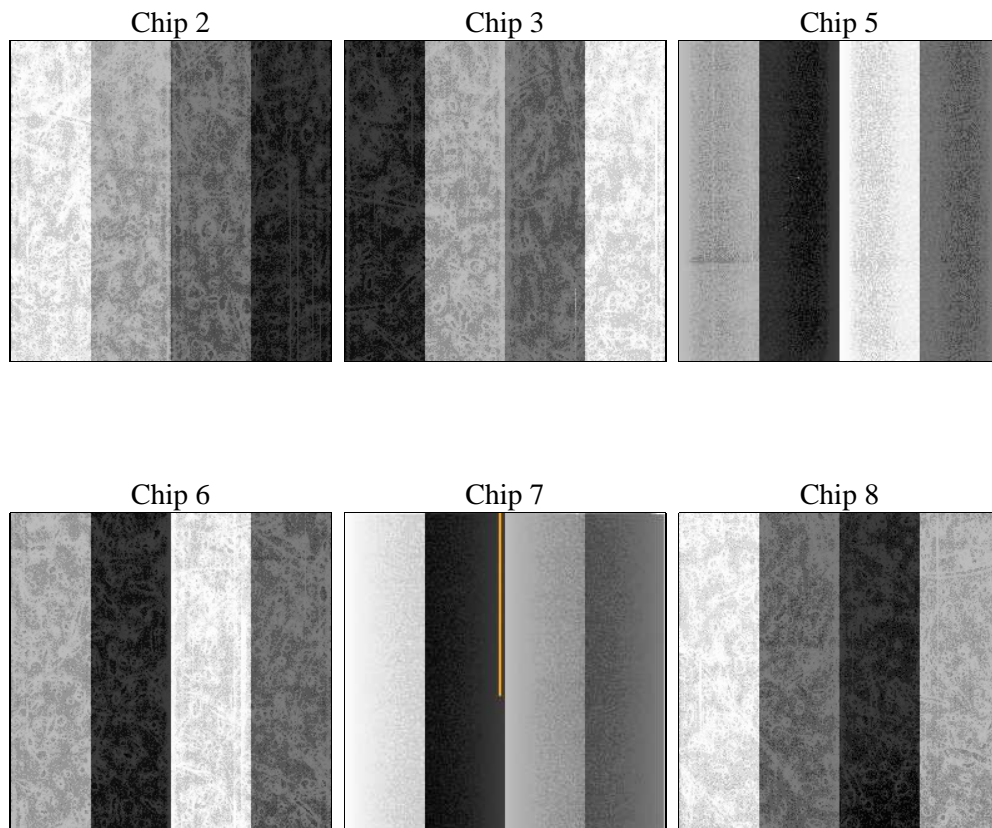
## 2 OBI

### 2.1 OBI

#### 2.1.1 Images



#### 2.1.2 Bias



### 2.1.3 Parameters

obi_num	0	Obi number	sched_exp_time	10799.000000	[s] Scheduled observation exposure time
ascdsver	8.5.1.1	Processing system revision	ontime	10806.399959743	Sum of GTIs [s]
caldsver	4.5.5	&#160	ontime2	10806.399959743	Sum of GTIs [s]
date	2012-12-25T21:21:55	Date and time of file creation	ontime3	10806.399959743	Sum of GTIs [s]
revision	3	Processing version of data	ontime5	10806.399959743	Sum of GTIs [s]
			ontime6	10806.399959743	Sum of GTIs [s]
			ontime7	10806.399959743	Sum of GTIs [s]
			ontime8	10806.399959743	Sum of GTIs [s]
			l1events	218141	Number of level 1 events

### 2.1.4 Events

	ccd 2	ccd 3	ccd 5	ccd 6	ccd 7	ccd 8
level 1 events	54675	44619	12265	45941	6884	53757
rejected events	52472	42987	2912	43840	1558	40151
rejected %	95%	96%	23%	95%	22%	74%

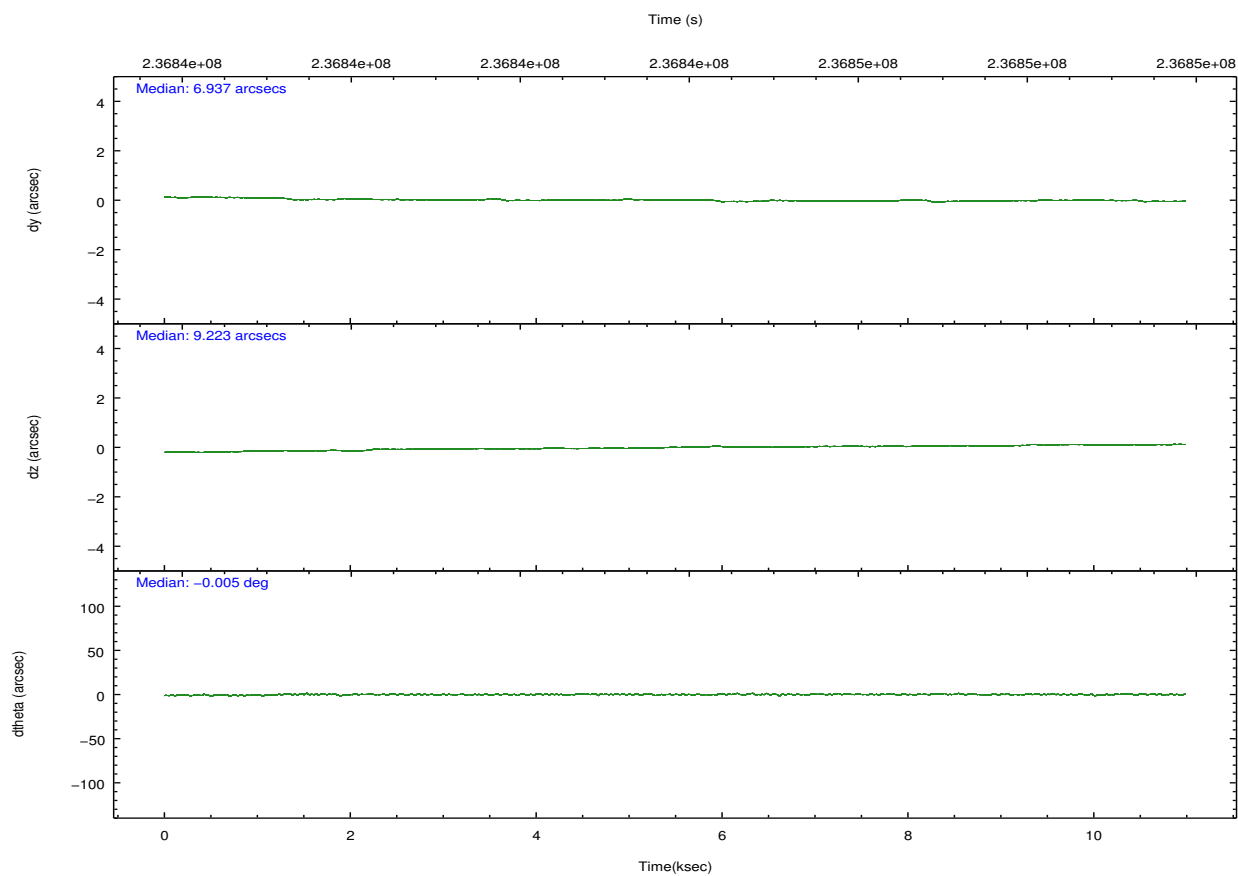
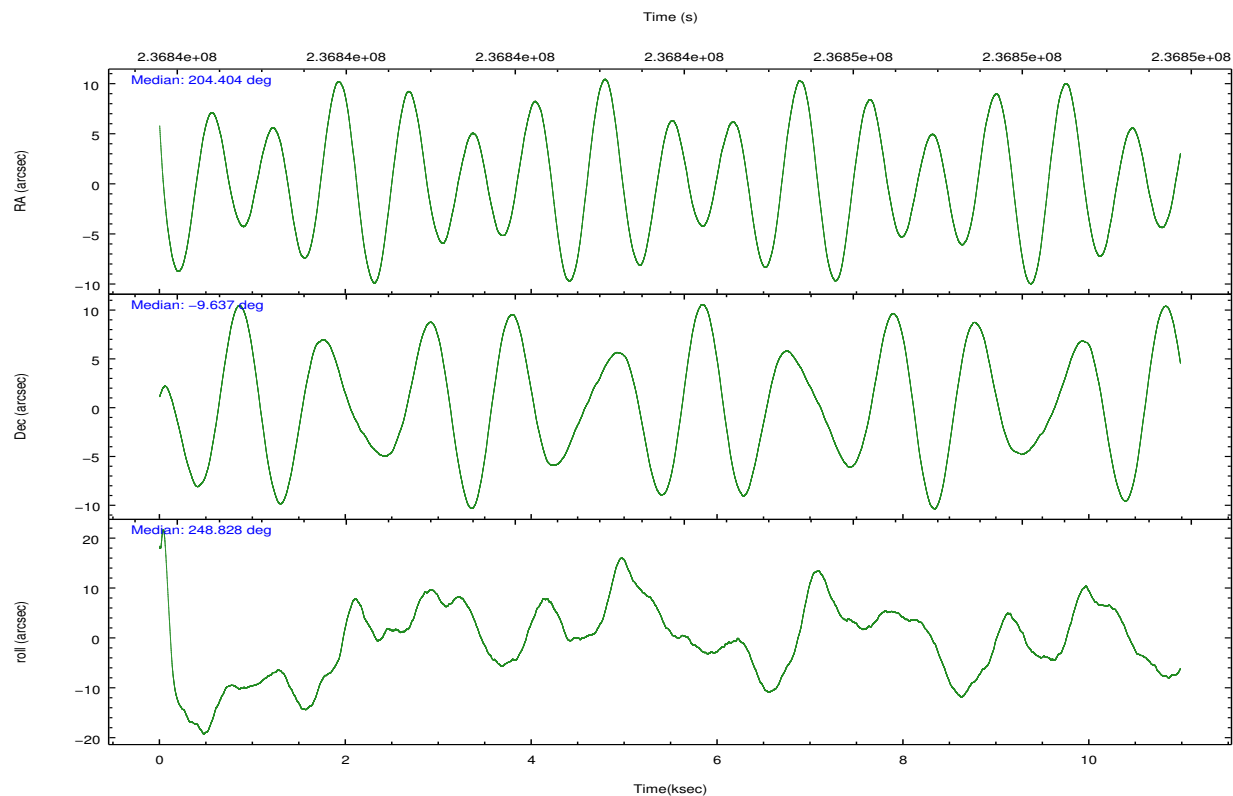
	ccd 2	ccd 3	ccd 5	ccd 6	ccd 7	ccd 8
grade 0 events	846	801	3982	1047	1439	3786
	1%	1%	32%	2%	20%	7%
grade 1 events	16	15	80	15	44	36
	0%	0%	0%	0%	0%	0%
grade 2 events	569	184	3100	366	1809	3073
	1%	0%	25%	0%	26%	5%
grade 3 events	261	291	776	272	759	1551
	0%	0%	6%	0%	11%	2%
grade 4 events	330	265	775	291	724	1413
	0%	0%	6%	0%	10%	2%
grade 5 events	77	40	520	33	202	324
	0%	0%	4%	0%	2%	0%
grade 6 events	221	112	799	151	661	3927
	0%	0%	6%	0%	9%	7%
grade 7 events	52355	42911	2233	43766	1246	39647
	95%	96%	18%	95%	18%	73%



## 2.2 Compared Parameters

Parameter	Planned	Actual	Parameter	Planned	Actual
Instrument	ACIS	ACIS	Obspar format version number	7	7
Detector	ACIS-235678	ACIS-235678	Obspar file type	PREDICTED	ACTUAL
Grating	NONE	NONE	Obspar update status	NONE	UPDATED
Data mode	VFAINT	VFAINT	Number of optional ACIS chips dropped	0	0
Observation mode	POINTING	POINTING	On-chip summing requested	N	N
[deg] Pointing RA	204.399745	204.4043201673622	Subarray requested	NONE	NONE
[deg] Pointing Dec	-9.609943	-9.636795150238587	Alternating exposures requested	N	N
[deg] Pointing Roll	248.679014	248.8364479902123	[s] Primary exposure time	0.000000	3.2
[mm] SIM focus pos	-0.684267	-0.6828225247311905			
[mm] SIM defocus	0	0.001444936568705701			
[mm] SIM translation stage pos	-190.132523	-190.145094680475			
[mm] SIM translation stage offset	0	0.01257209746719923			
[s] Observation start time (MET)	236838524.184000	236837539.90951			
Observation start date	2005-07-04T04:27:40	2005-07-04T04:12:19			
[s] Observation end time (MET)	236849323.184000	236849457.07255			
Observation end date	2005-07-04T07:27:39	2005-07-04T07:30:57			
Read mode	TIMED	TIMED			

## 2.3 Aspect

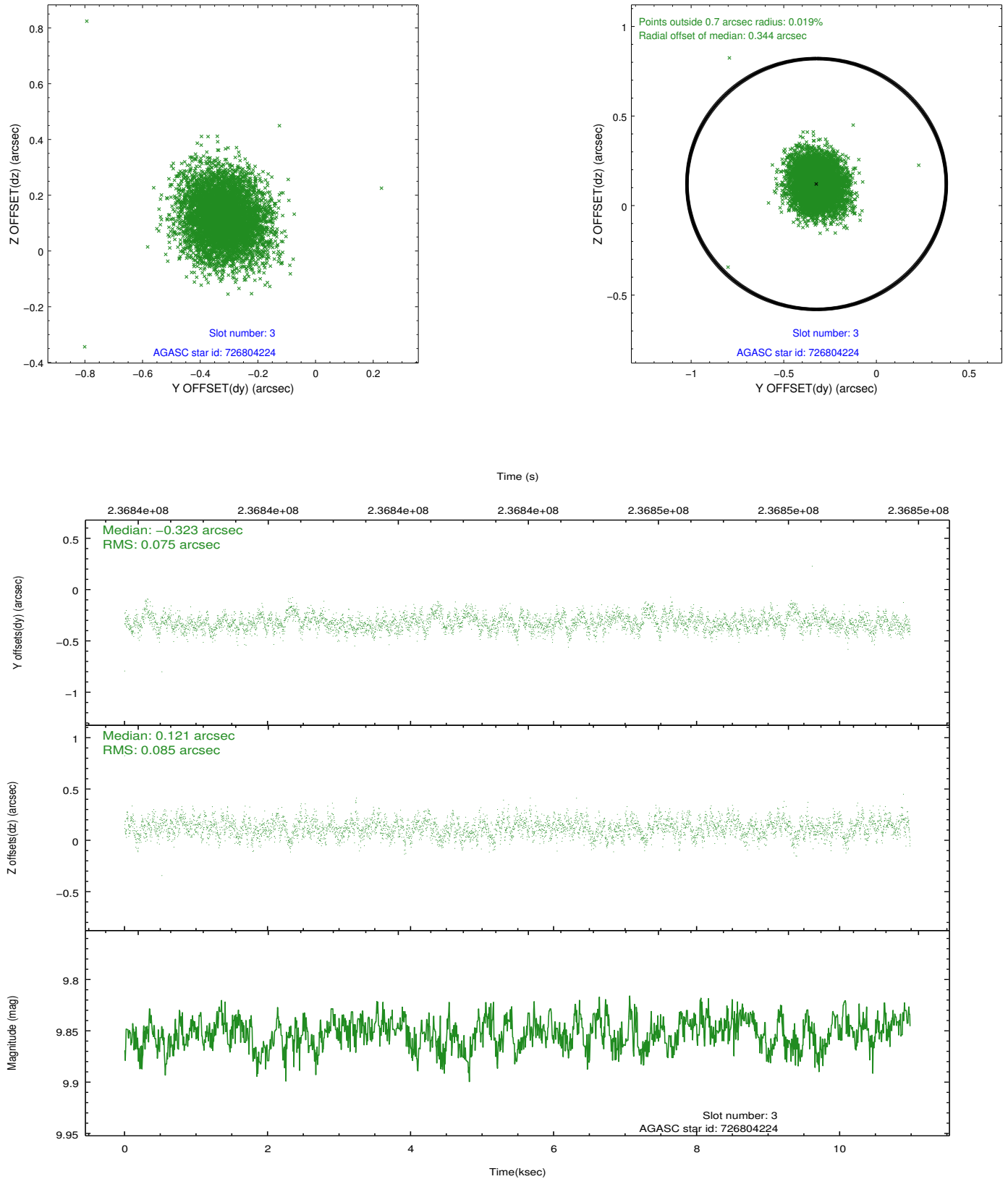


### Slot Statistics

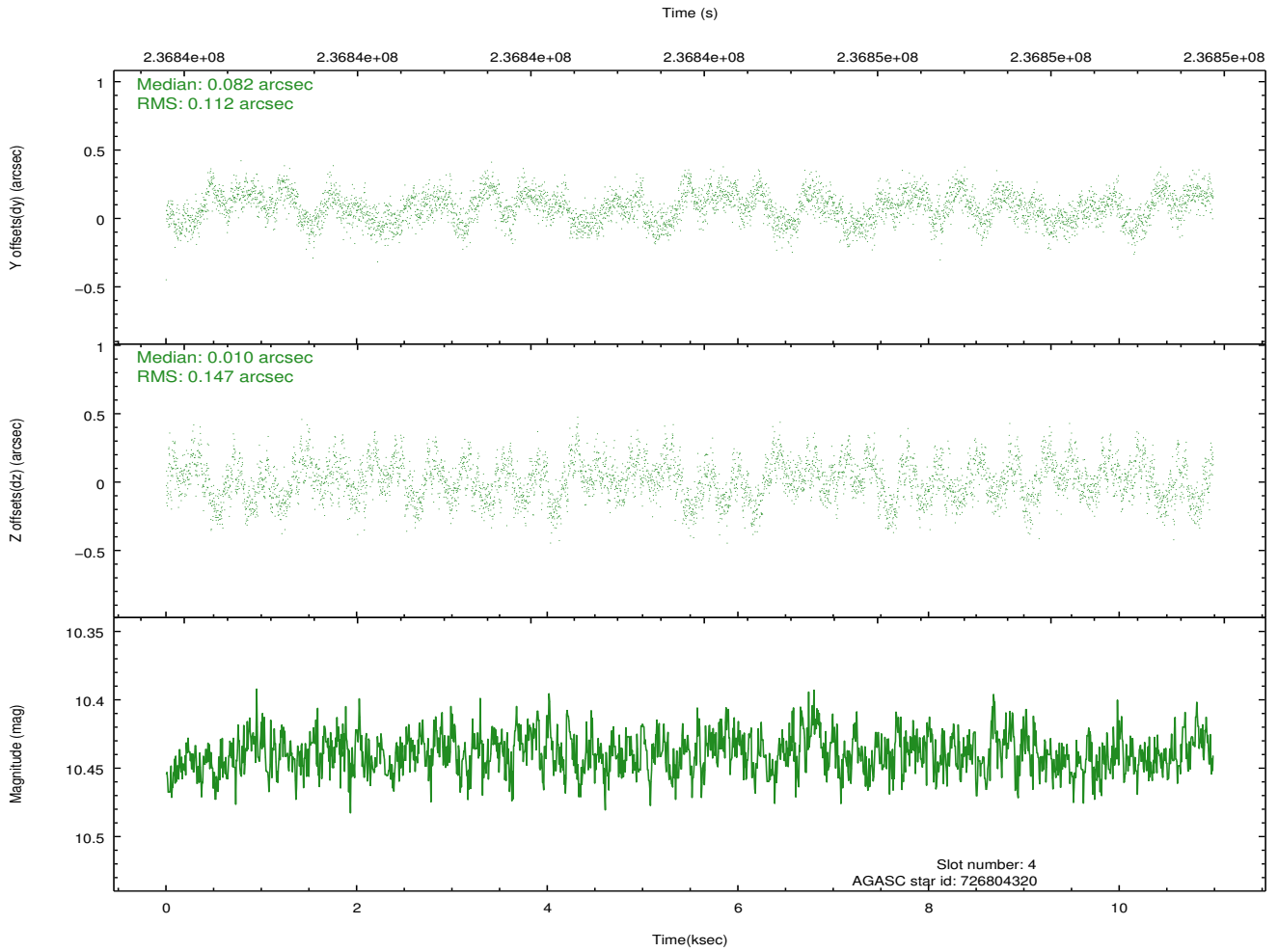
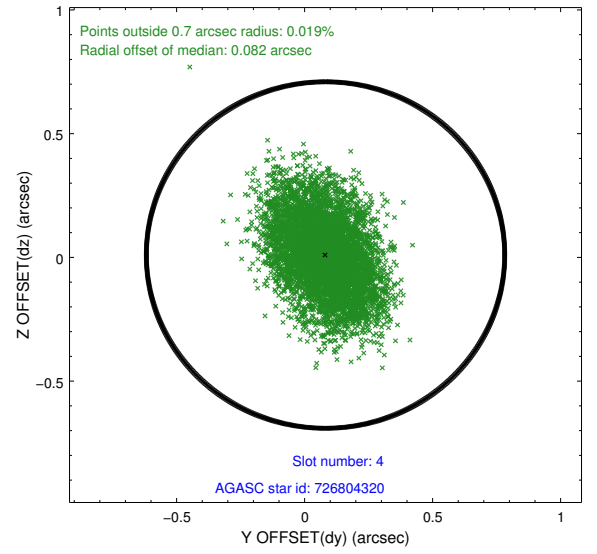
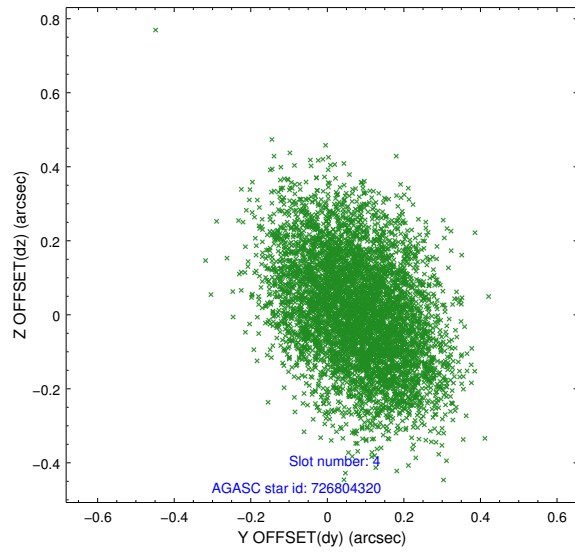
slot	status	id	mag	n_pts	med_dy	med_dz	dr1	dr2	ra	dec	mean_y	mean_z
0	FID	ACIS-S-1	7.19	2679	0.047	-0.000	0.006	0.010	0.000000	0.000000	936.37	-1725.96
1	FID	ACIS-S-2	7.10	2679	-0.069	-0.022	0.007	0.012	0.000000	0.000000	-759.38	-1731.01
2	FID	ACIS-S-6	7.35	2679	0.002	0.027	0.006	0.011	0.000000	0.000000	401.79	814.92
3	GUIDE	726804224	9.85	5351	-0.323	0.121	0.120	0.192	203.979225	-8.888668	-1874.15	-2336.90
4	GUIDE	726804320	10.44	5348	0.082	0.010	0.198	0.317	203.890975	-9.273004	-471.33	-2124.45
5	GUIDE	726932888	9.56	5356	-0.548	-0.052	0.122	0.205	204.640397	-9.165404	-1801.92	214.73
6	GUIDE	726935840	9.51	5354	0.684	-0.542	0.090	0.149	205.084608	-9.297514	-1930.03	1858.32
7	GUIDE	727320712	10.43	5350	0.106	0.453	0.203	0.327	204.468965	-10.254166	2071.21	1073.30

## 2.4 Star Slots

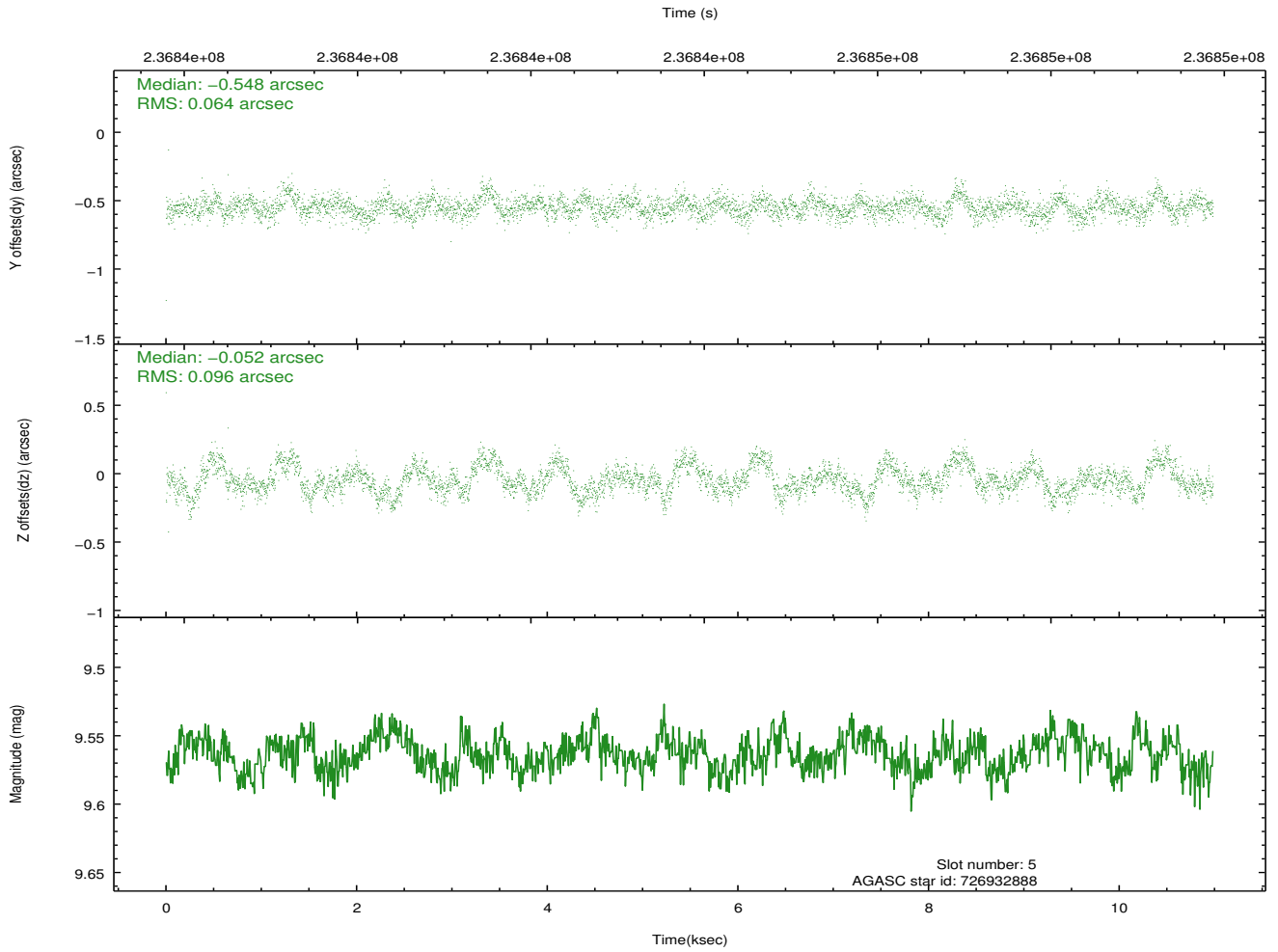
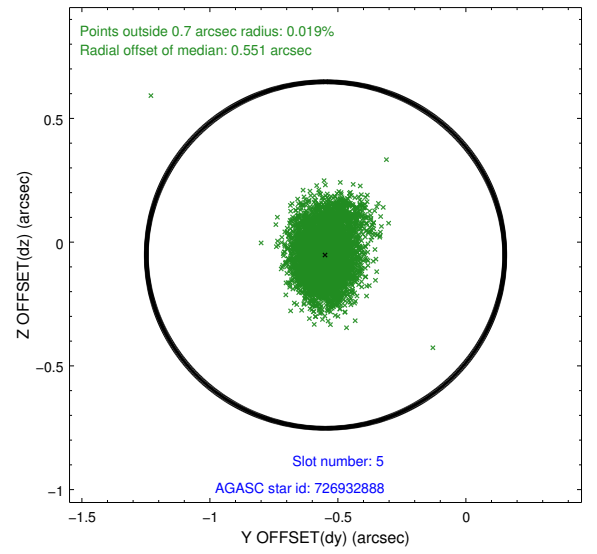
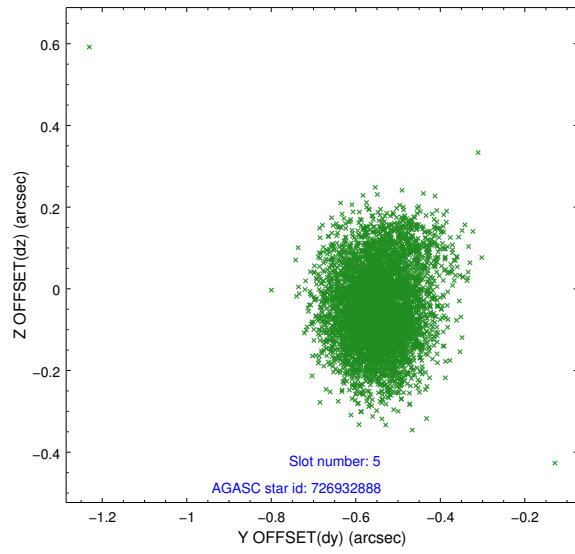
### 2.4.1 Slot 3



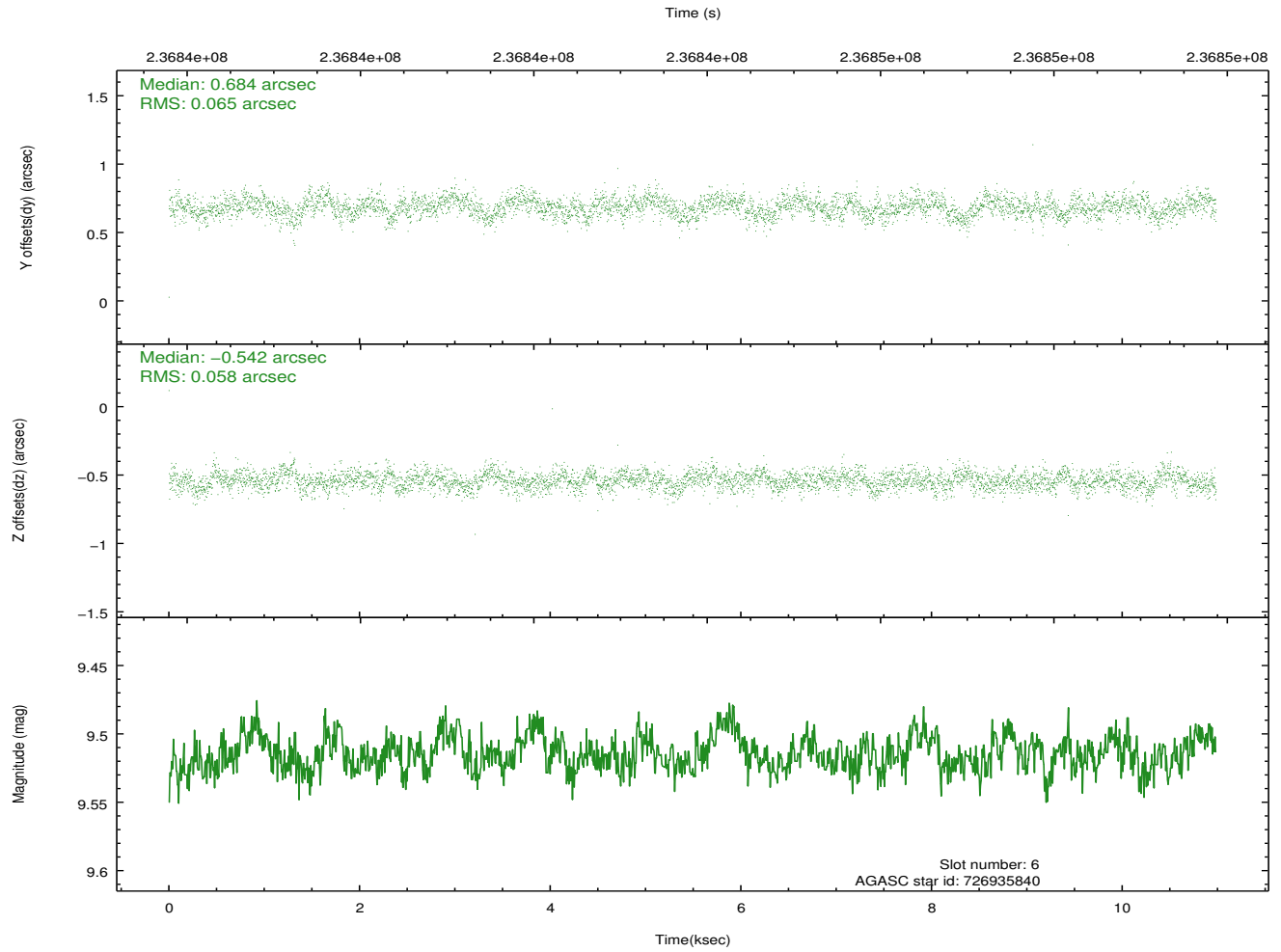
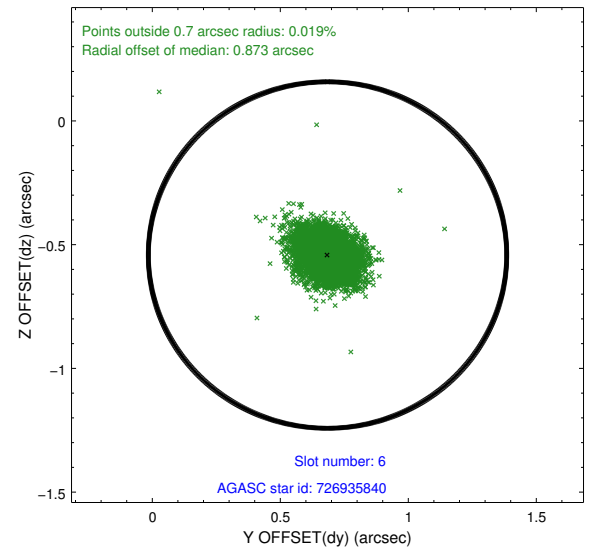
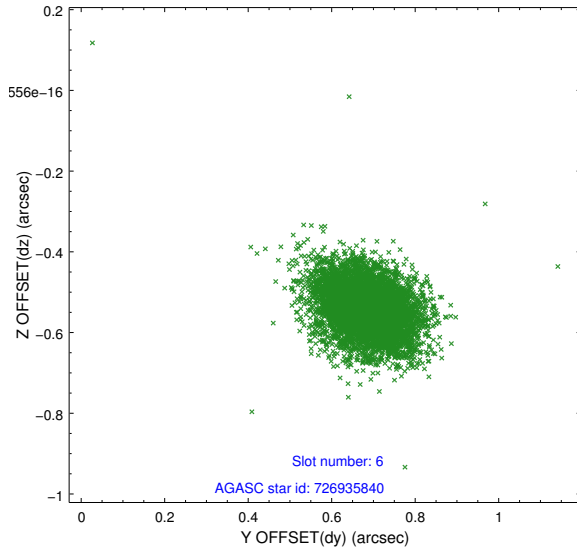
## 2.4.2 Slot 4



### 2.4.3 Slot 5

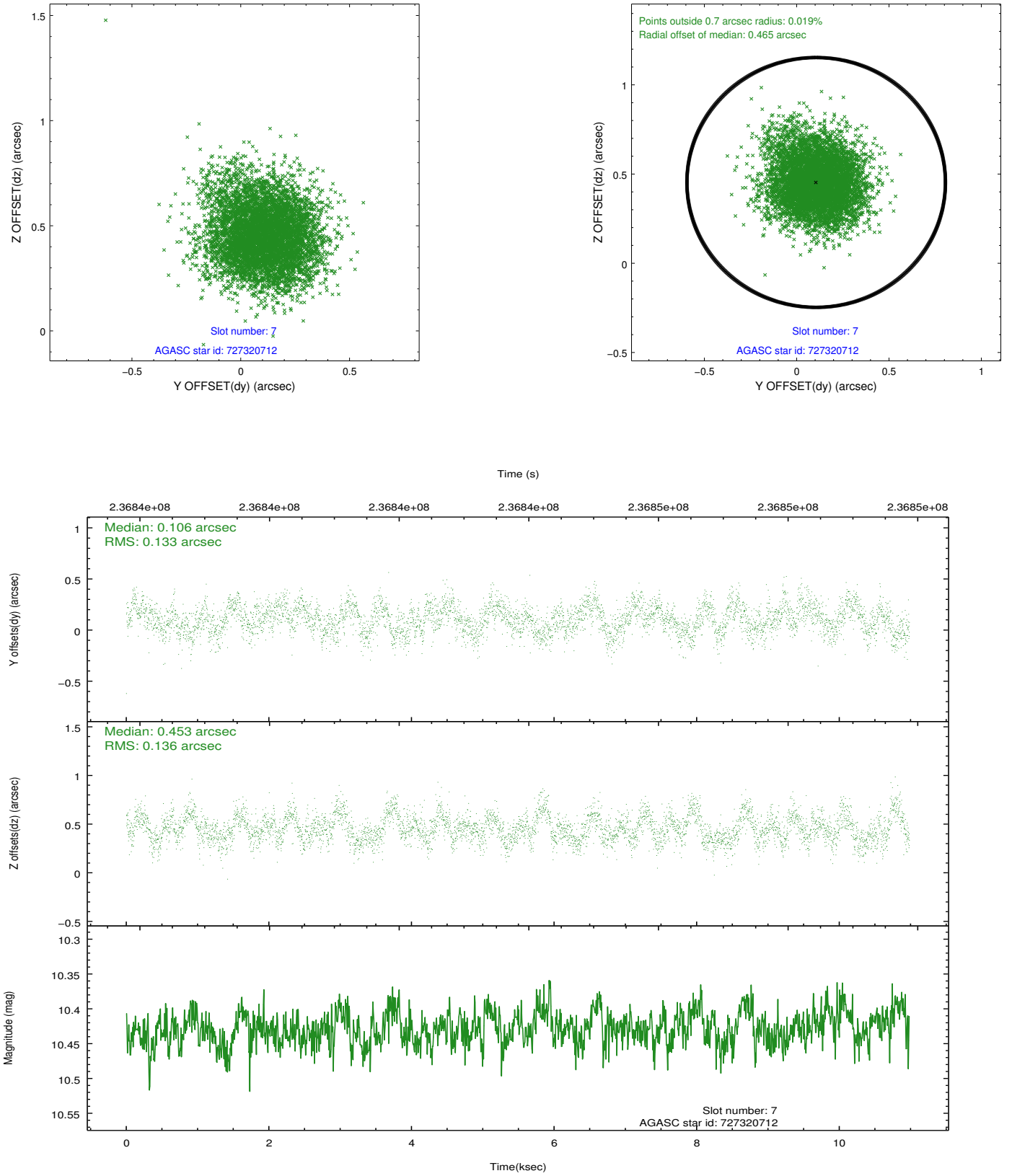


## 2.4.4 Slot 6



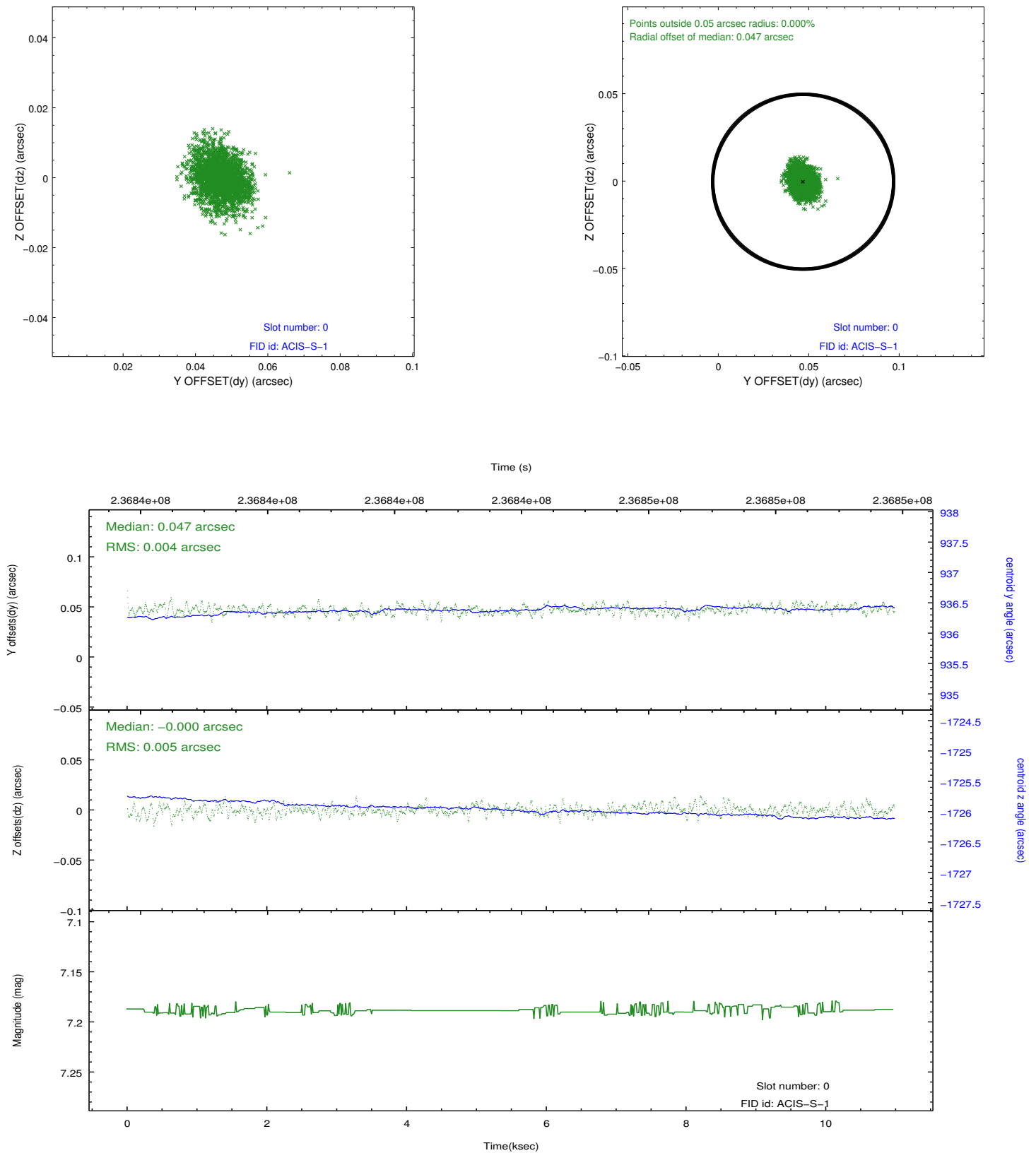


## 2.4.5 Slot 7

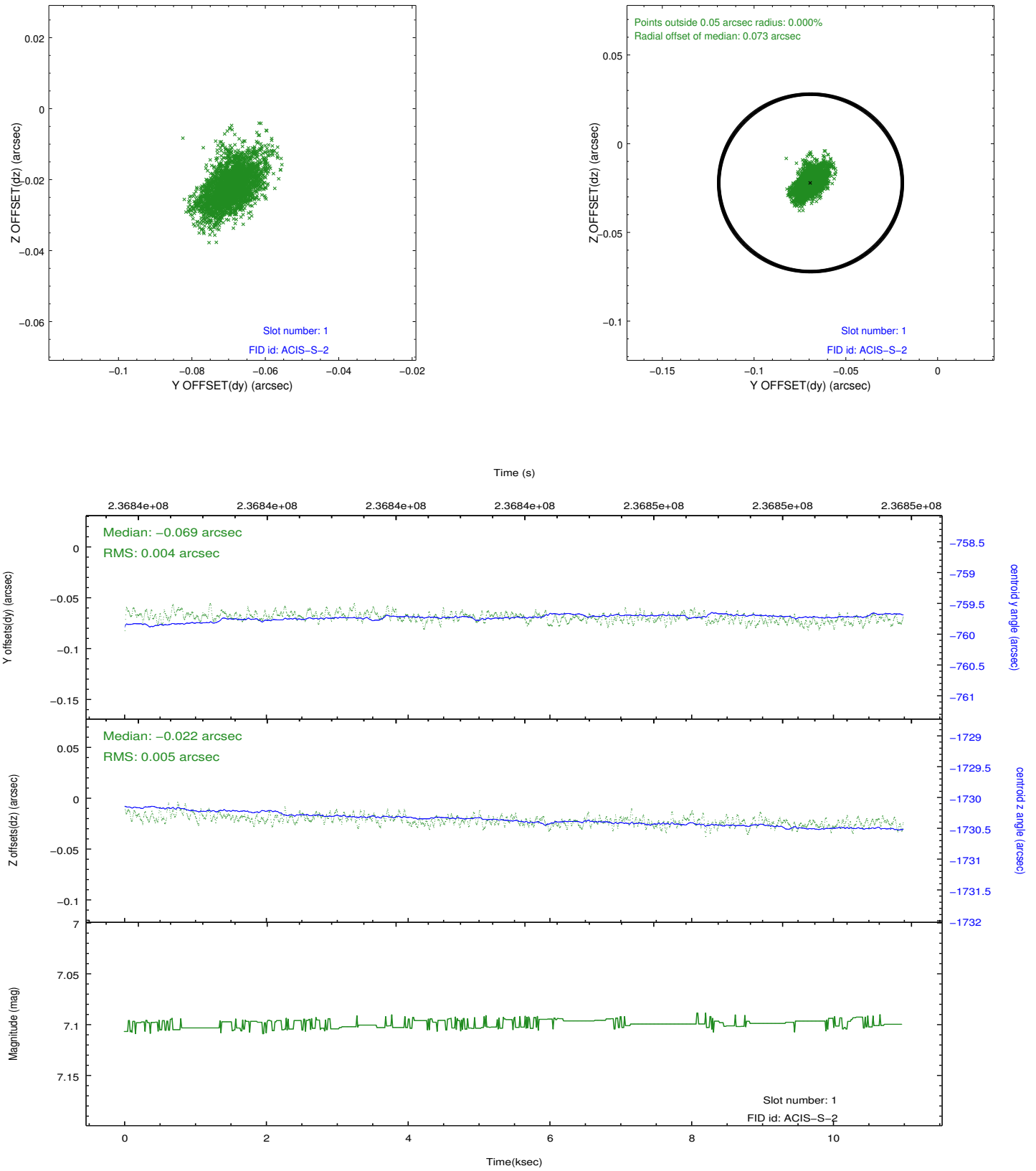


## 2.5 FID Slots

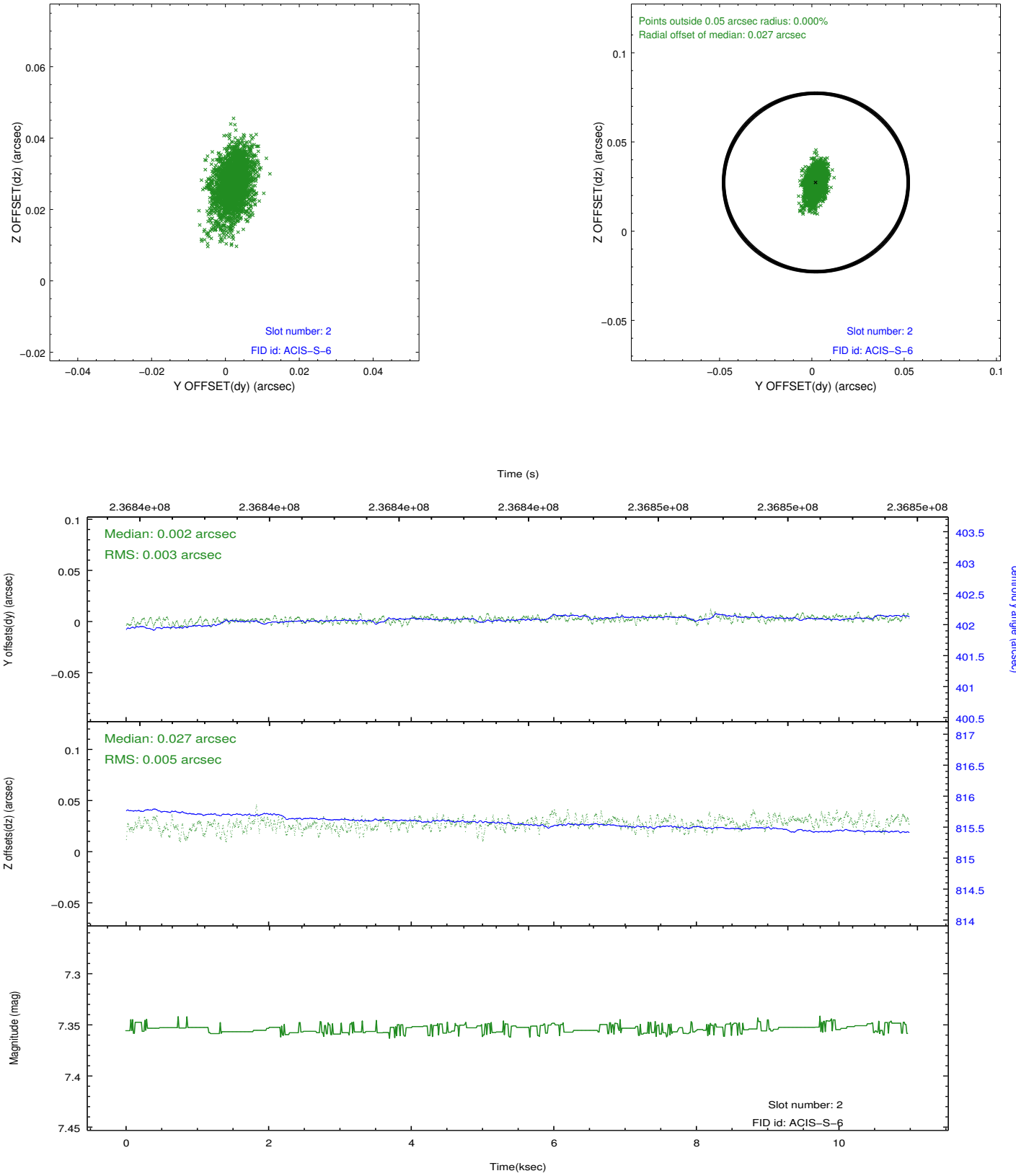
### 2.5.1 Slot 0



### 2.5.2 Slot 1



### 2.5.3 Slot 2



# A Summary

## A.1 Status

V&V Scientist	Jen Lauer
V&V Date (YYYY-MM-DD)	2013.01.17
V&V Edition	1
V&V Disposition and Status	OK
V&V Charge Time	10.80639

## A.2 Comments

This is a moving target. Users will need to run `sso_freeze` or similar software to position the events in the reference frame of the target.