

V&V Reference Report

L2 ASCDS Version : 8.5.1.1

Observation 6317 - L2 Version 3
Chandra X-Ray Center

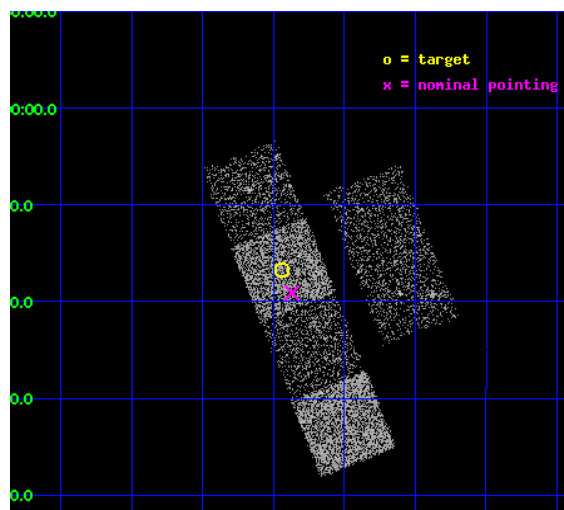
L2 Processing Date : Dec 25 2012

Contents

1	Front	2
2	OBI	3
2.1	OBI	3
2.1.1	Images	3
2.1.2	Bias	3
2.1.3	Parameters	4
2.1.4	Events	4
2.2	Compared Parameters	5
2.3	Aspect	6
2.4	Star Slots	9
2.4.1	Slot 3	9
2.4.2	Slot 4	10
2.4.3	Slot 5	11
2.4.4	Slot 6	12
2.4.5	Slot 7	13
2.5	FID Slots	14
2.5.1	Slot 0	14
2.5.2	Slot 1	15
2.5.3	Slot 2	16
A	Summary	17
A.1	Status	17
A.2	Comments	17

1 Front

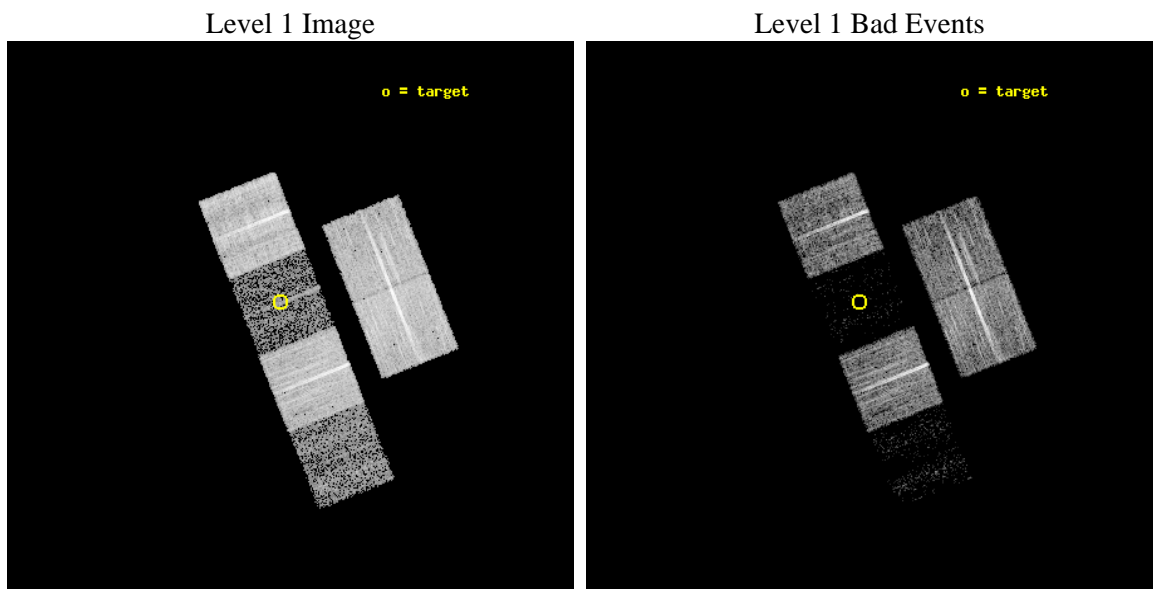
seq_num	100054	Sequence number
obs_id	6317	Observation id
title	Comet 9P/Tempel 1 During the Deep Impact Encounter	Proposal title
observer	Dr. Carey Lisse	Principal investigator
object	9P/Tempel 1	Source name
dtcycle	0	
cycle	P	events from which exps? Prim/Second/Both
ra_targ	202.985336	Observer's specified target RA [deg]
dec_targ	-8.279387	Observer's specified target Dec [deg]
ra_nom	202.96769524222	Nominal RA [deg]
dec_nom	-8.3185737795872	Nominal Dec [deg]
roll_nom	248.37279390773	Nominal Roll [deg]
revision	3	Processing version of data
ontime	10182.399962068	Sum of GTIs [s]
livetime	10053.464282643	Livetime [s]
ontime2	10179.158991784	Sum of GTIs [s]
ontime3	10182.399962068	Sum of GTIs [s]
ontime5	10182.399962068	Sum of GTIs [s]
ontime6	10182.399962068	Sum of GTIs [s]
ontime7	10182.399962068	Sum of GTIs [s]
ontime8	10182.399962068	Sum of GTIs [s]
l2events	13780	Number of level 2 events



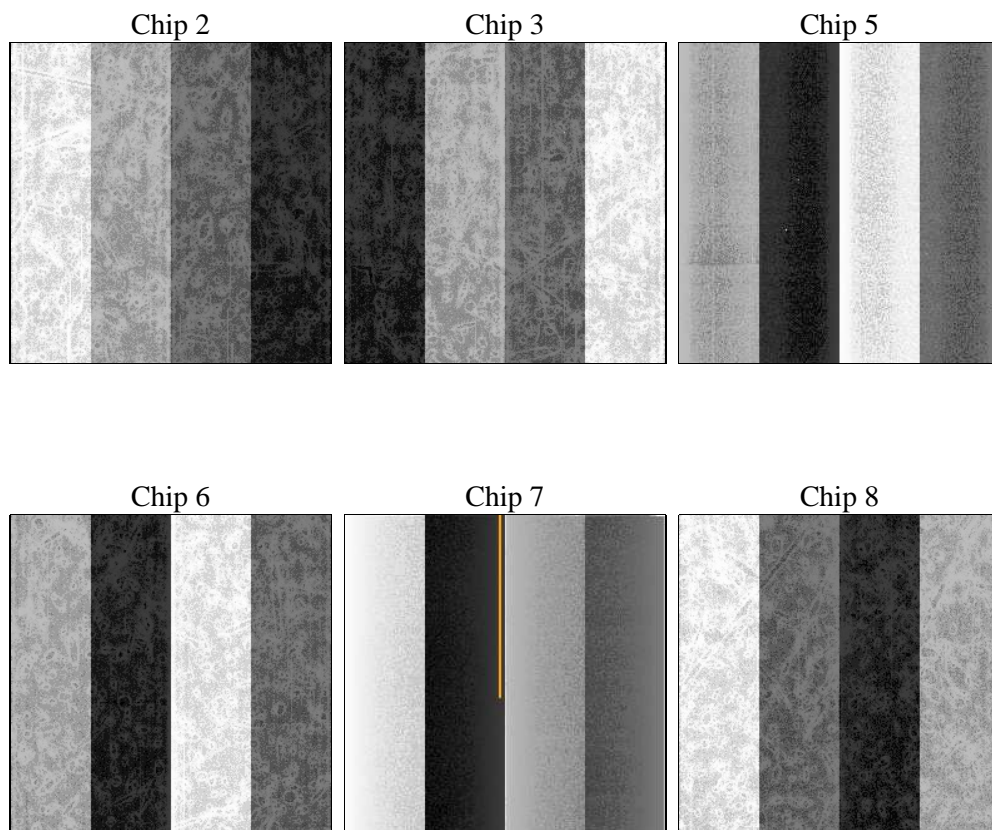
2 OBI

2.1 OBI

2.1.1 Images



2.1.2 Bias



2.1.3 Parameters

obi_num	0	Obi number	sched_exp_time	10000.000000	[s] Scheduled observation exposure time
ascdsver	8.5.1.1	Processing system revision	ontime	10182.399962068	Sum of GTIs [s]
caldbver	4.5.5	 	ontime2	10179.158991784	Sum of GTIs [s]
date	2012-12-25T21:11:32	Date and time of file creation	ontime3	10182.399962068	Sum of GTIs [s]
revision	3	Processing version of data	ontime5	10182.399962068	Sum of GTIs [s]
			ontime6	10182.399962068	Sum of GTIs [s]
			ontime7	10182.399962068	Sum of GTIs [s]
			ontime8	10182.399962068	Sum of GTIs [s]
			l1events	208240	Number of level 1 events

2.1.4 Events

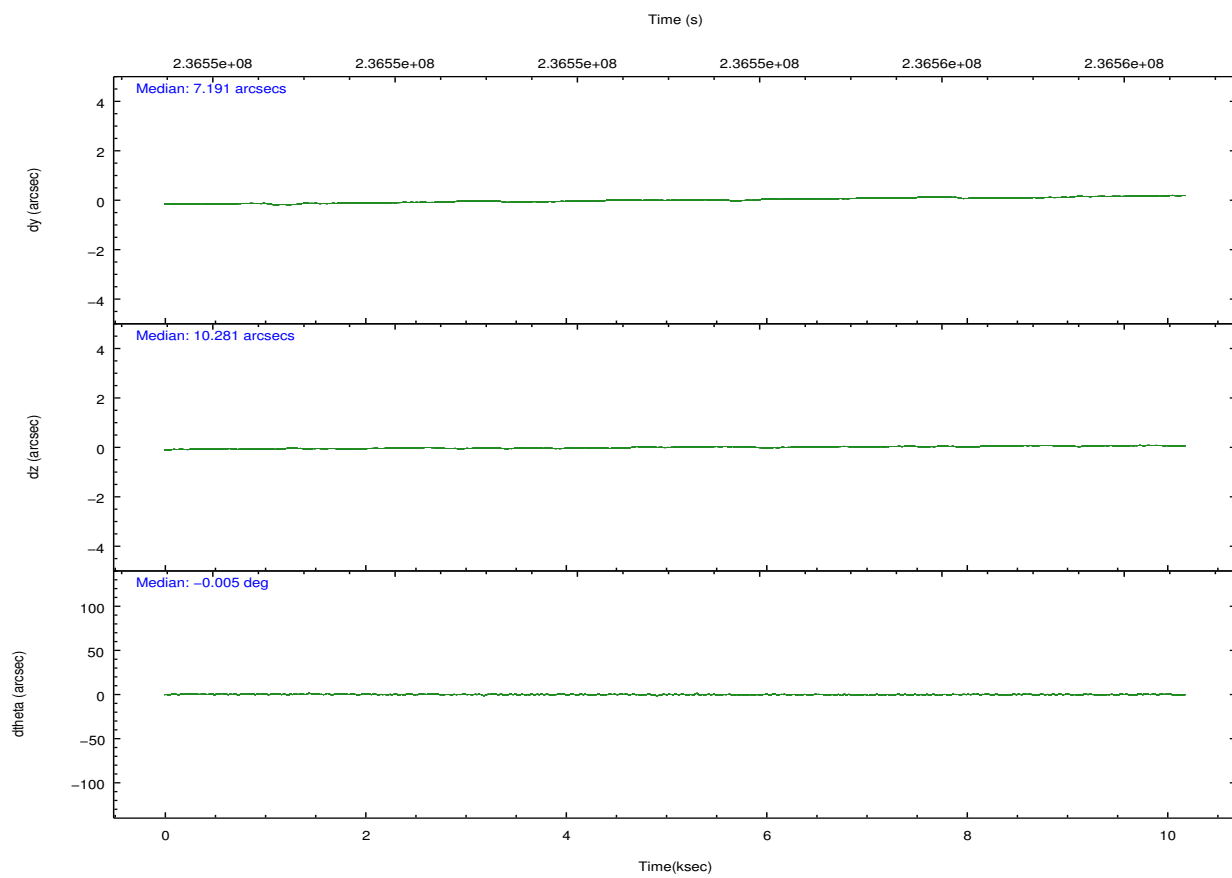
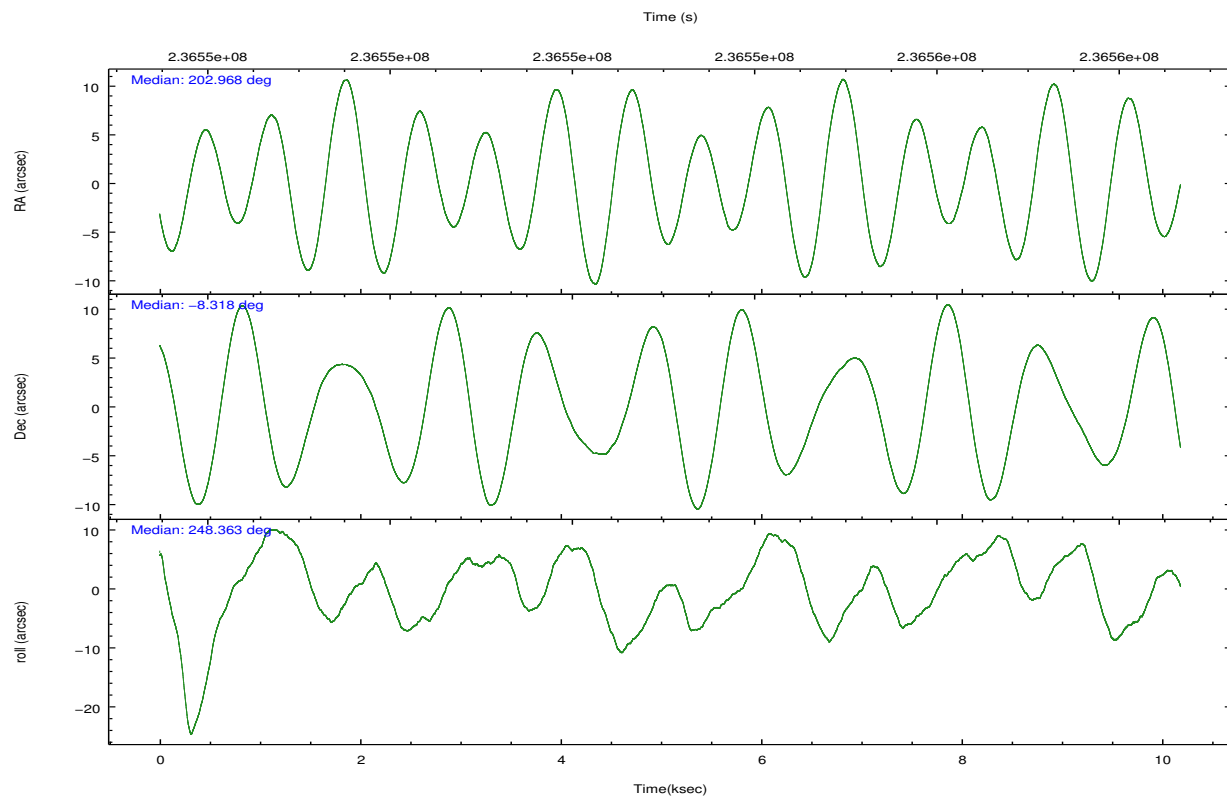
	ccd 2	ccd 3	ccd 5	ccd 6	ccd 7	ccd 8
level 1 events	53200	42162	7909	45826	6190	52953
rejected events	51007	40683	2781	43946	1408	39986
rejected %	95%	96%	35%	95%	22%	75%

	ccd 2	ccd 3	ccd 5	ccd 6	ccd 7	ccd 8
grade 0 events	953	711	1327	879	1304	3699
	1%	1%	16%	1%	21%	6%
grade 1 events	7	15	52	19	38	41
	0%	0%	0%	0%	0%	0%
grade 2 events	482	187	2054	338	1629	2956
	0%	0%	25%	0%	26%	5%
grade 3 events	284	264	630	290	694	1595
	0%	0%	7%	0%	11%	3%
grade 4 events	306	233	668	277	730	1428
	0%	0%	8%	0%	11%	2%
grade 5 events	49	45	442	46	158	272
	0%	0%	5%	0%	2%	0%
grade 6 events	234	136	644	152	594	3624
	0%	0%	8%	0%	9%	6%
grade 7 events	50885	40571	2092	43825	1043	39338
	95%	96%	26%	95%	16%	74%

2.2 Compared Parameters

Parameter	Planned	Actual	Parameter	Planned	Actual
Instrument	ACIS	ACIS	Obspar format version number	7	7
Detector	ACIS-235678	ACIS-235678	Obspar file type	PREDICTED	ACTUAL
Grating	NONE	NONE	Obspar update status	NONE	UPDATED
Data mode	VFAINT	VFAINT	Number of optional ACIS chips dropped	0	0
Observation mode	POINTING	POINTING	On-chip summing requested	N	N
[deg] Pointing RA	202.963352	202.9676952422186	Subarray requested	NONE	NONE
[deg] Pointing Dec	-8.291693	-8.318573779587195	Alternating exposures requested	N	N
[deg] Pointing Roll	248.215543	248.372793907732	[s] Primary exposure time	0.000000	3.2
[mm] SIM focus pos	-0.684267	-0.6828225247311905			
[mm] SIM defocus	0	0.001444936568705701			
[mm] SIM translation stage pos	-190.132523	-190.1400660498719			
[mm] SIM translation stage offset	0	0.00754346686406393			
[s] Observation start time (MET)	236548160.184000	236547784.18375			
Observation start date	2005-06-30T19:48:16	2005-06-30T19:43:04			
[s] Observation end time (MET)	236558160.184000	236558294.53424			
Observation end date	2005-06-30T22:34:56	2005-06-30T22:38:14			
Read mode	TIMED	TIMED			

2.3 Aspect

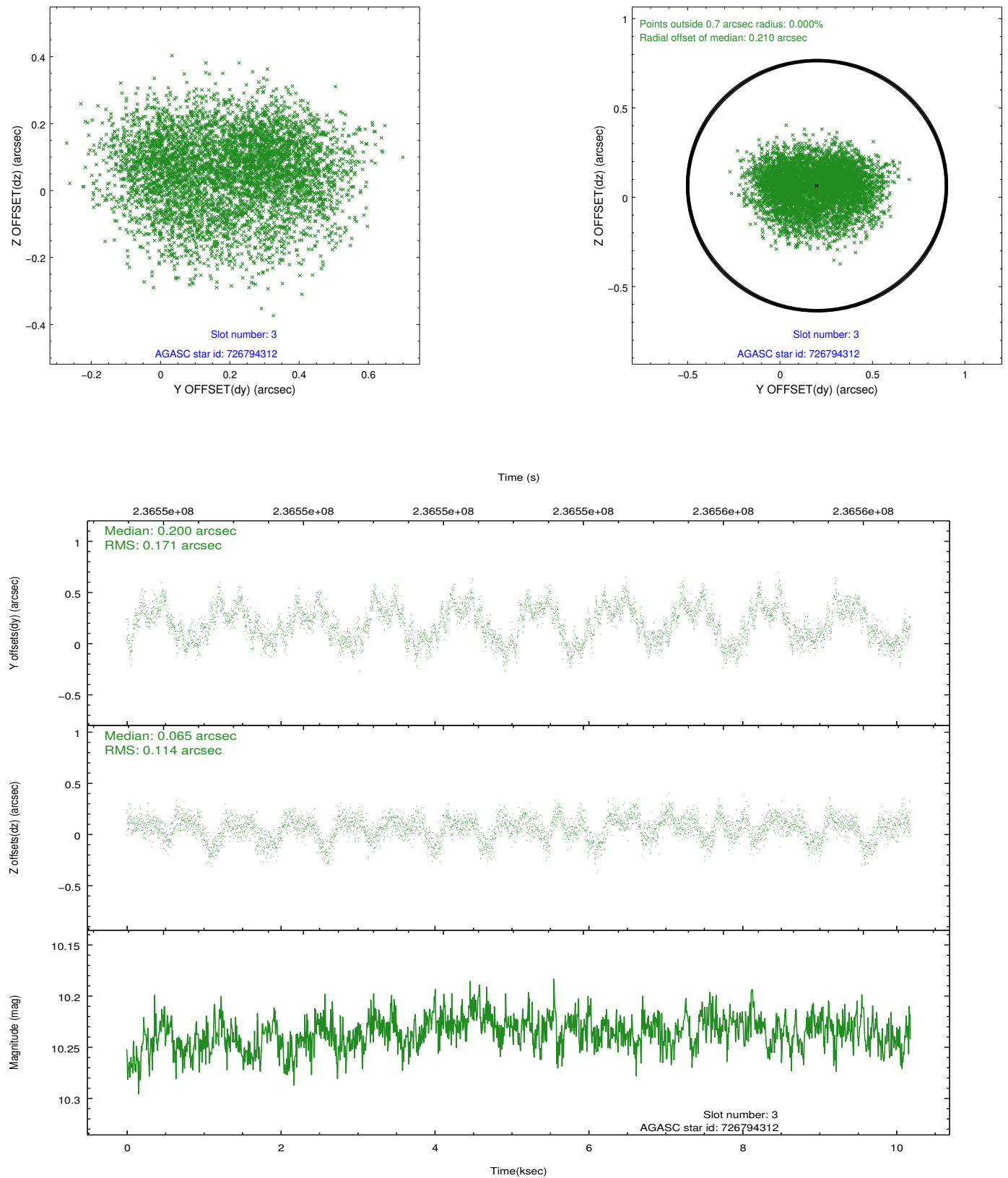


Slot Statistics

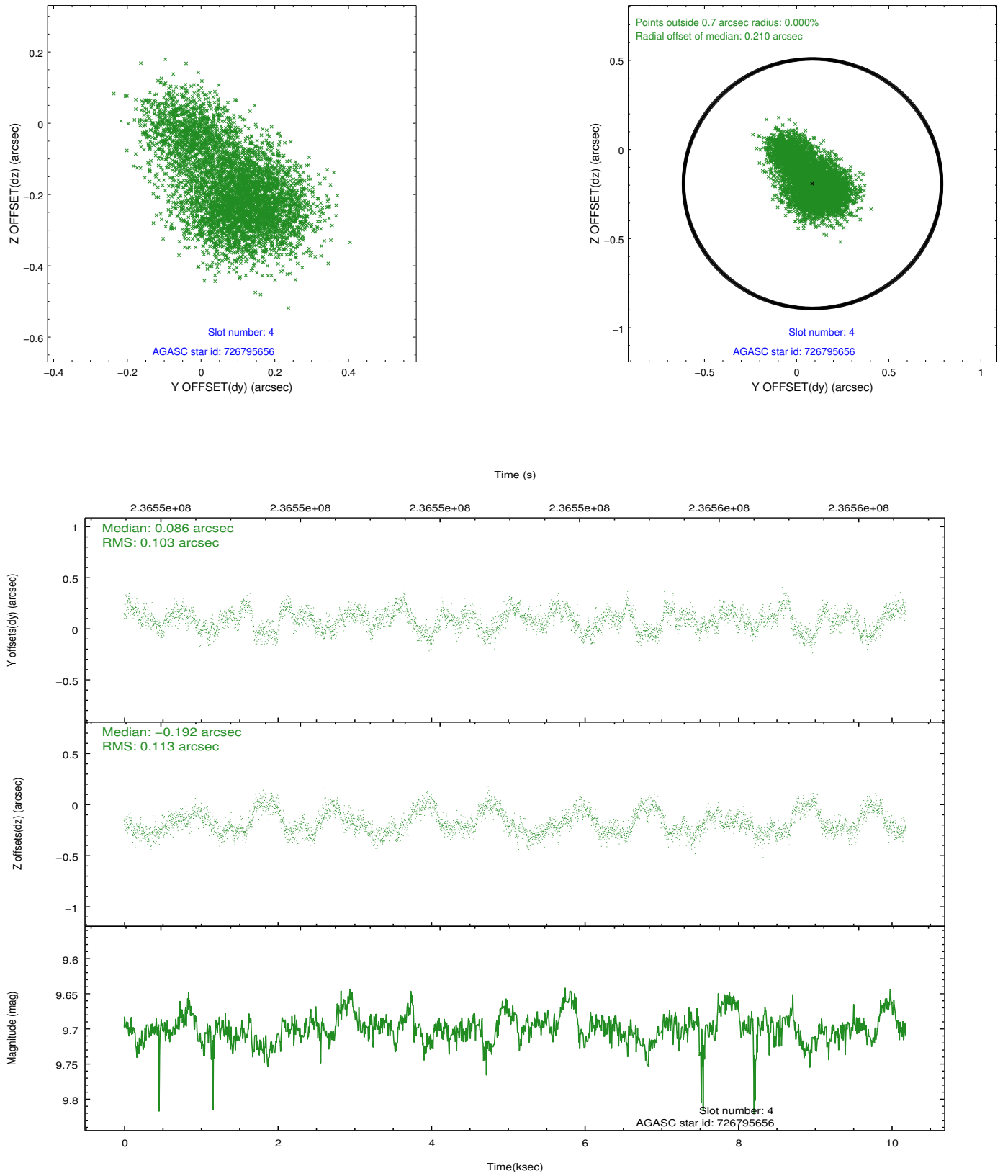
slot	status	id	mag	n_pts	med_dy	med_dz	dr1	dr2	ra	dec	mean_y	mean_z
0	FID	ACIS-S-2	7.10	2484	-0.059	-0.029	0.008	0.014	0.000000	0.000000	-759.96	-1731.58
1	FID	ACIS-S-4	7.21	2484	0.111	0.036	0.007	0.016	0.000000	0.000000	2153.20	176.50
2	FID	ACIS-S-5	7.23	2485	-0.083	0.001	0.008	0.015	0.000000	0.000000	-1812.21	170.63
3	GUIDE	726794312	10.24	4963	0.200	0.065	0.226	0.339	203.365400	-8.963648	1716.66	2225.94
4	GUIDE	726795656	9.70	4961	0.086	-0.192	0.163	0.272	202.576235	-8.591995	1516.90	-877.70
5	GUIDE	726796160	10.26	4941	-0.111	0.064	0.182	0.305	203.337231	-8.169596	-901.62	1073.89
6	GUIDE	726796976	9.92	4969	-0.181	-0.119	0.145	0.229	203.076886	-8.047529	-966.34	49.45
7	GUIDE	726797168	9.21	4959	0.013	0.176	0.086	0.141	202.692279	-8.774007	1970.82	-250.66

2.4 Star Slots

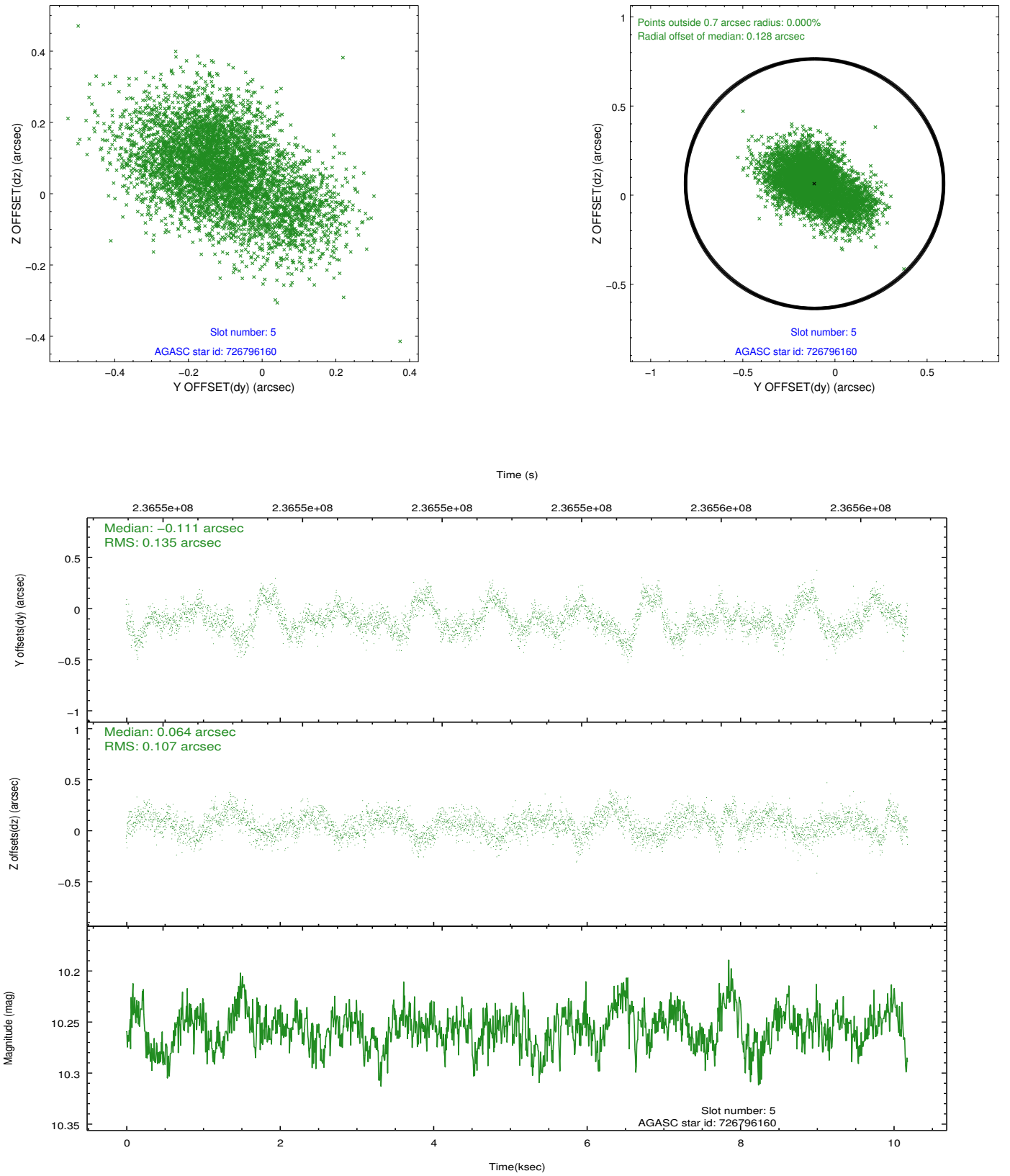
2.4.1 Slot 3



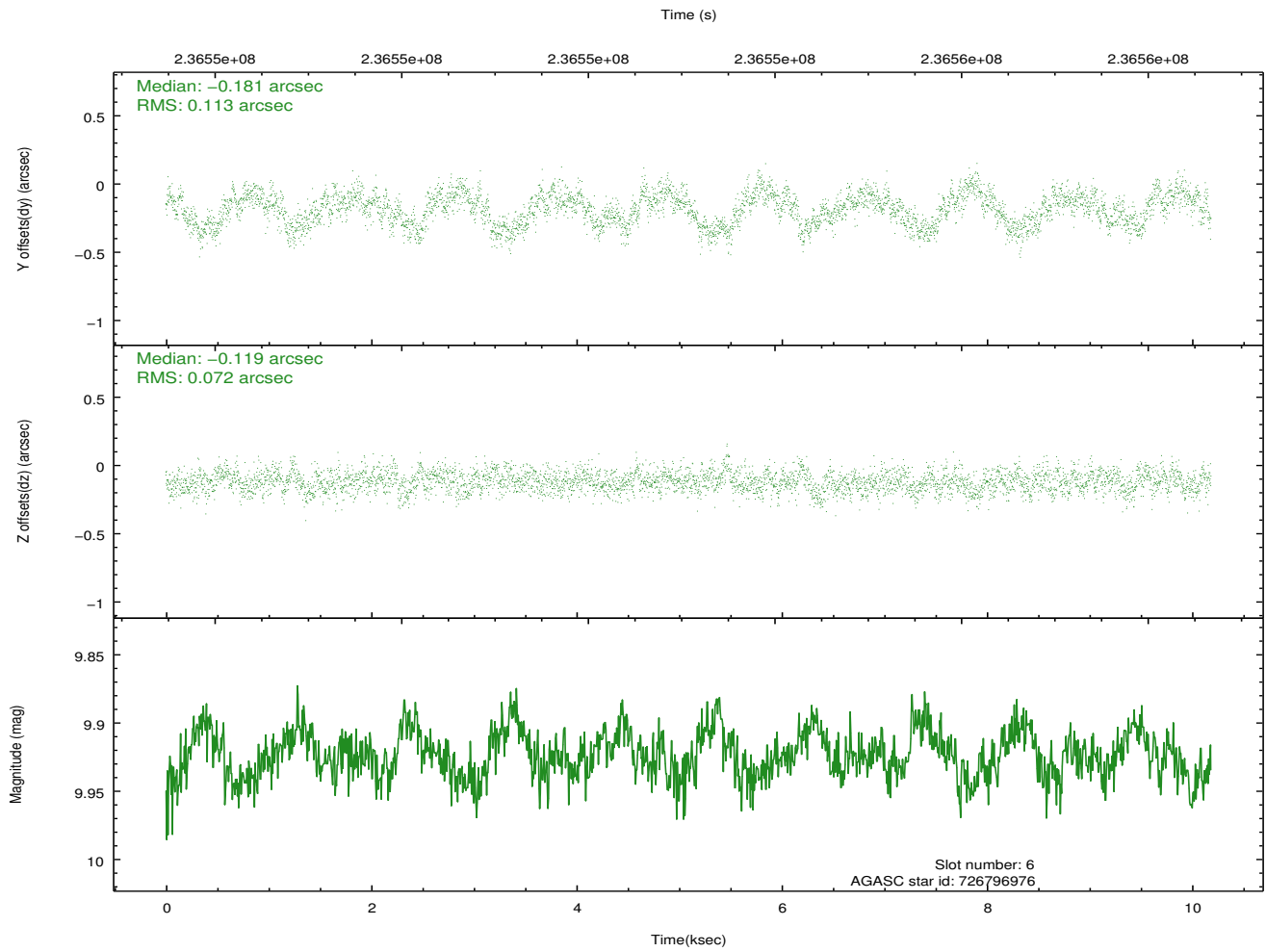
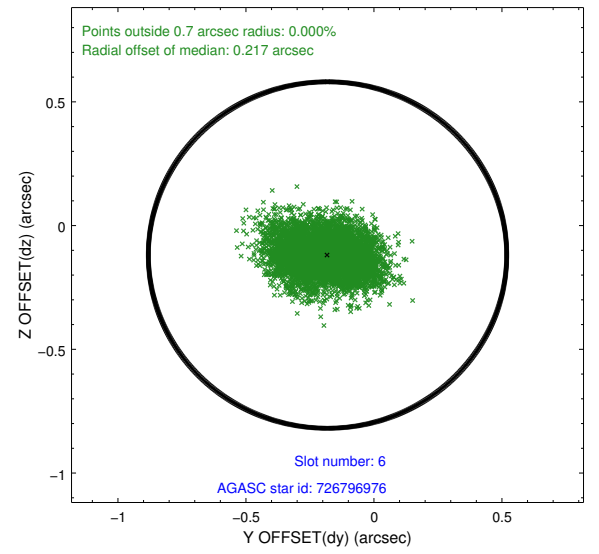
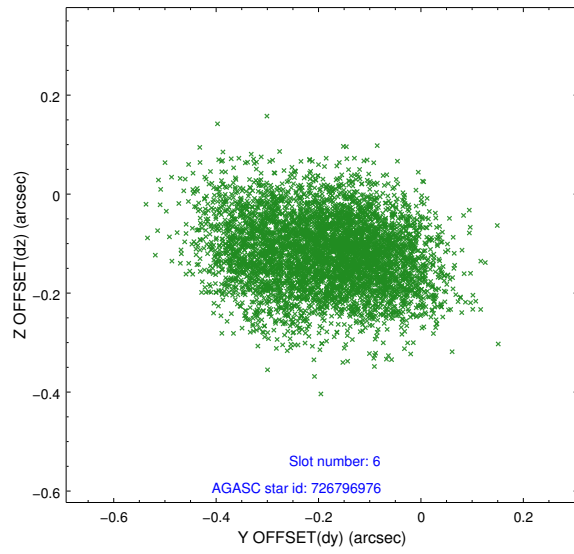
2.4.2 Slot 4



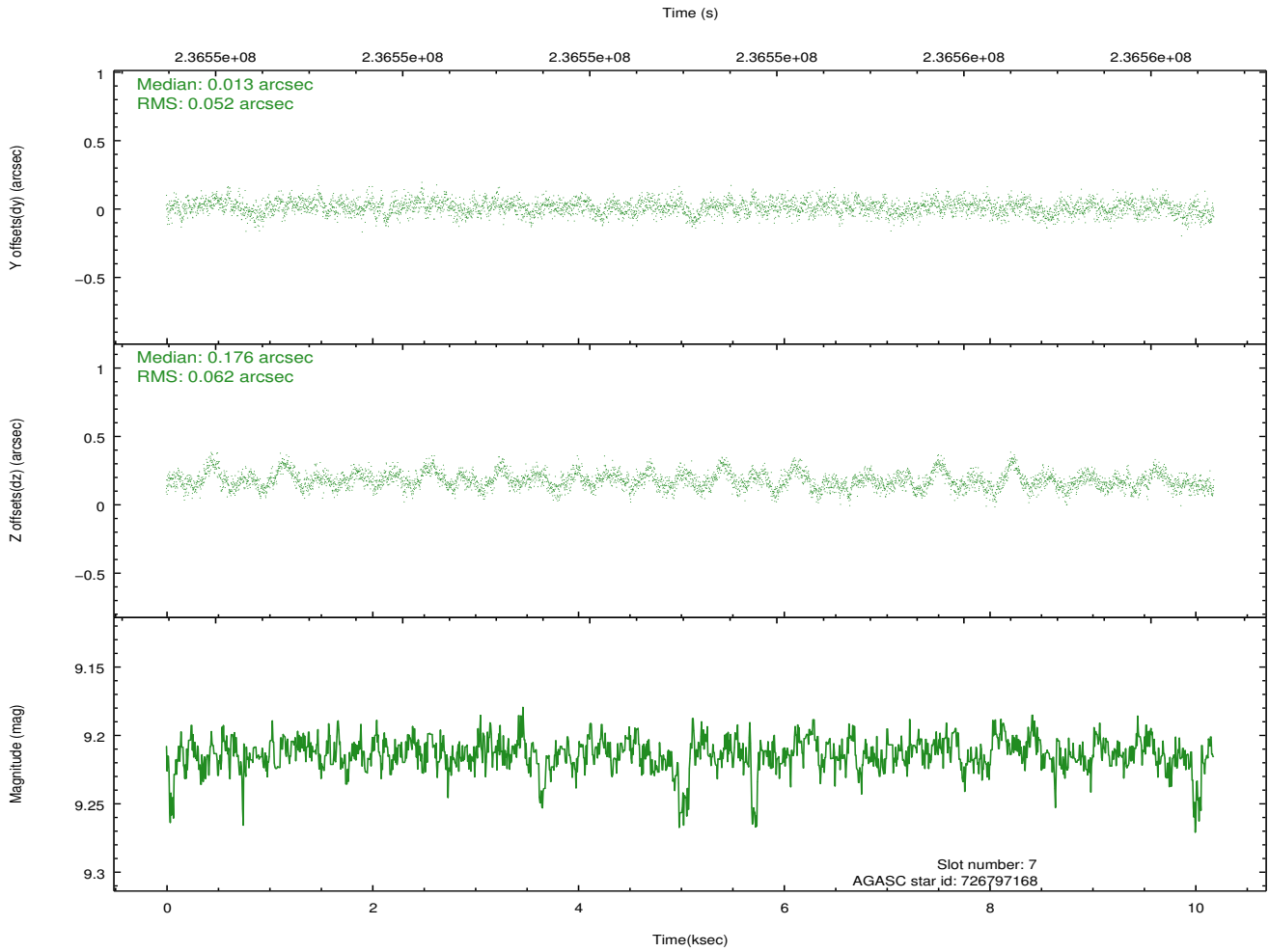
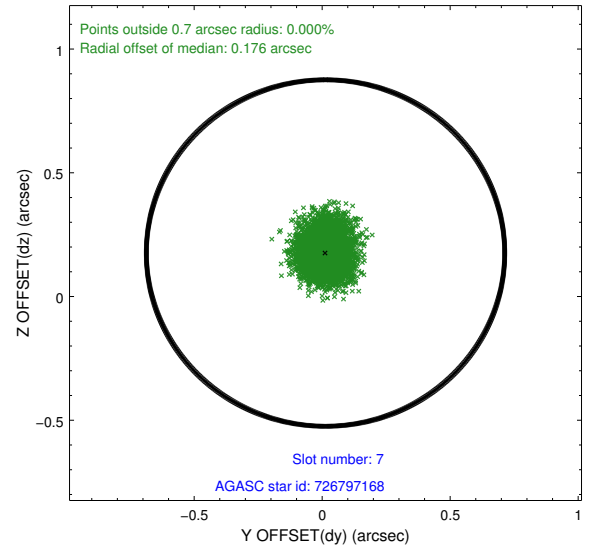
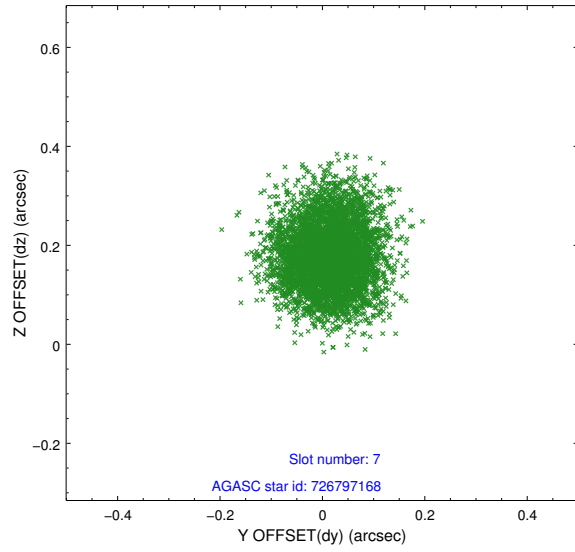
2.4.3 Slot 5



2.4.4 Slot 6

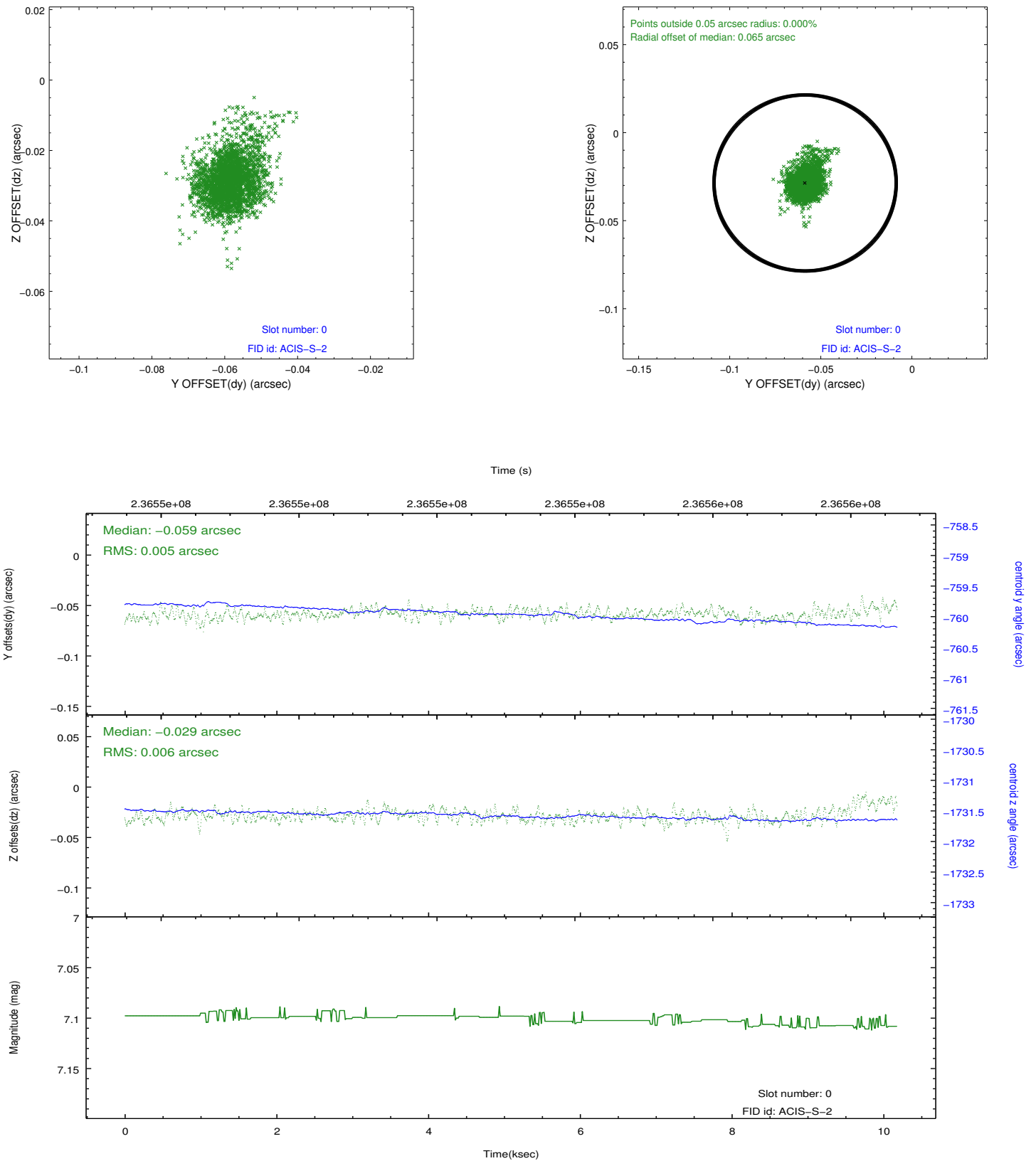


2.4.5 Slot 7

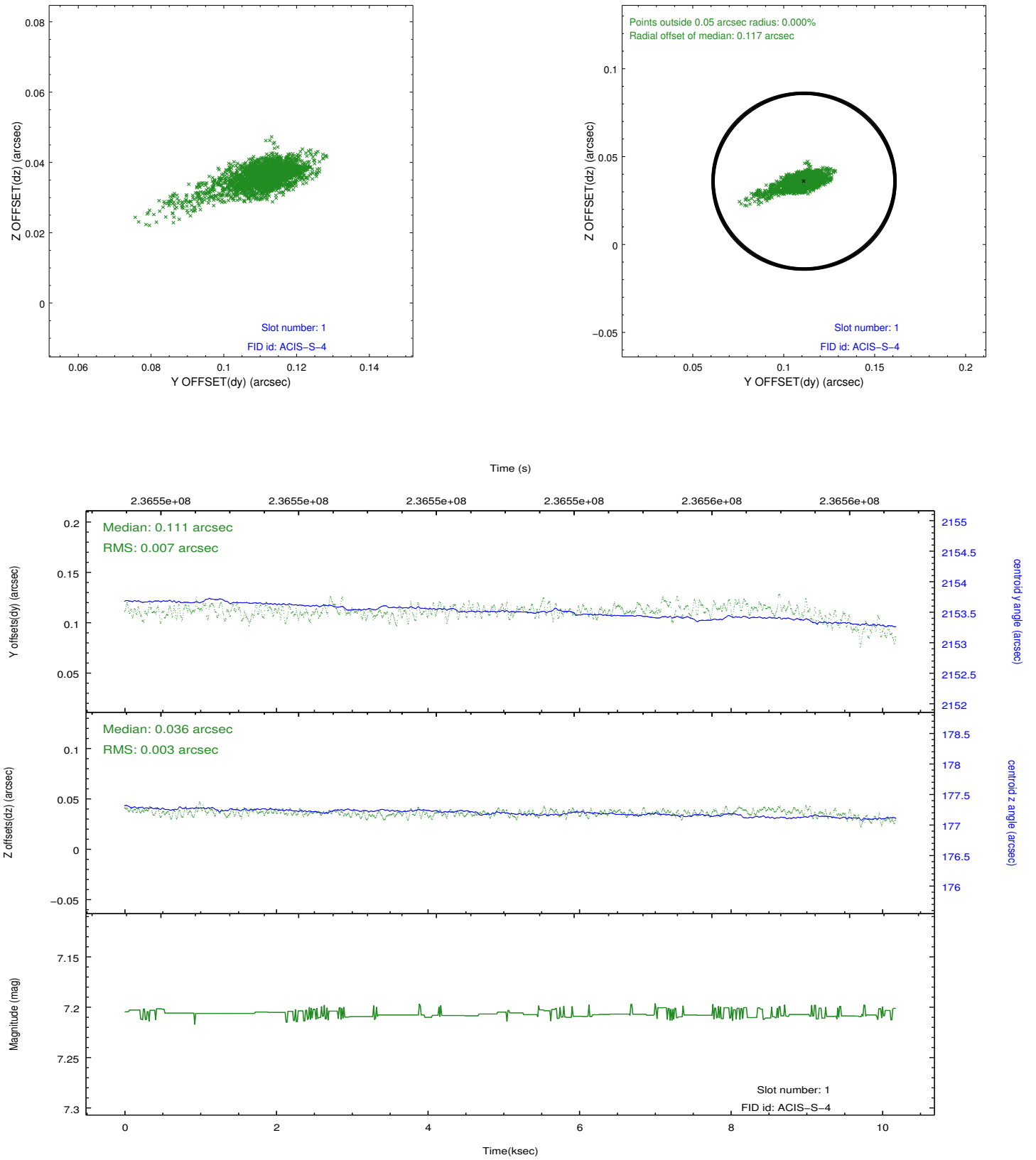


2.5 FID Slots

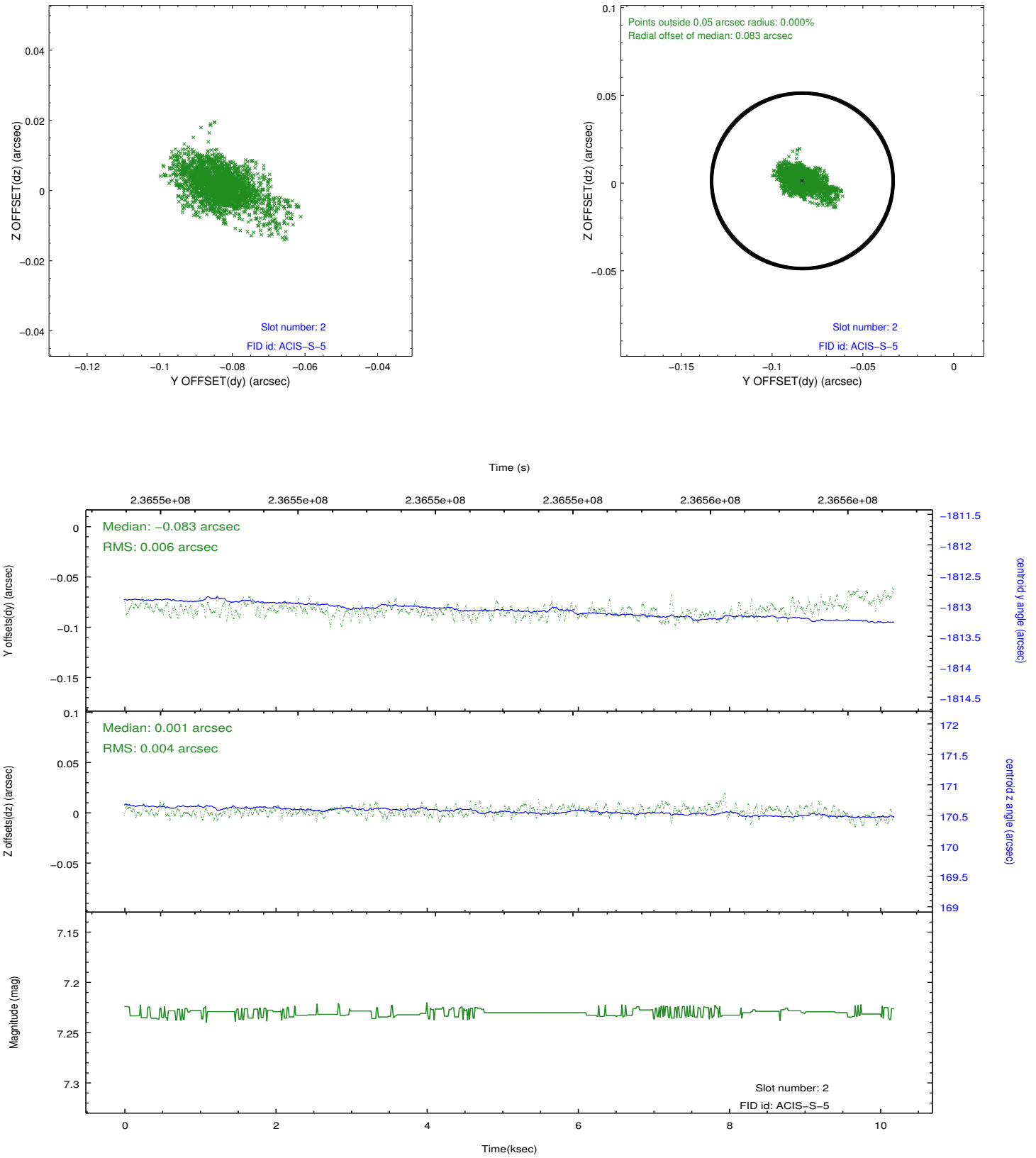
2.5.1 Slot 0



2.5.2 Slot 1



2.5.3 Slot 2



A Summary

A.1 Status

V&V Scientist	Jen Lauer
V&V Date (YYYY-MM-DD)	2013.01.17
V&V Edition	1
V&V Disposition and Status	OK
V&V Charge Time	10.18239

A.2 Comments

This is a moving target. Users will need to run `sso_freeze` or similar software to position the events in the reference frame of the target.