

V&V Reference Report

L2 ASCDS Version : 8.5

Observation 6139 - L2 Version 3
Chandra X-Ray Center

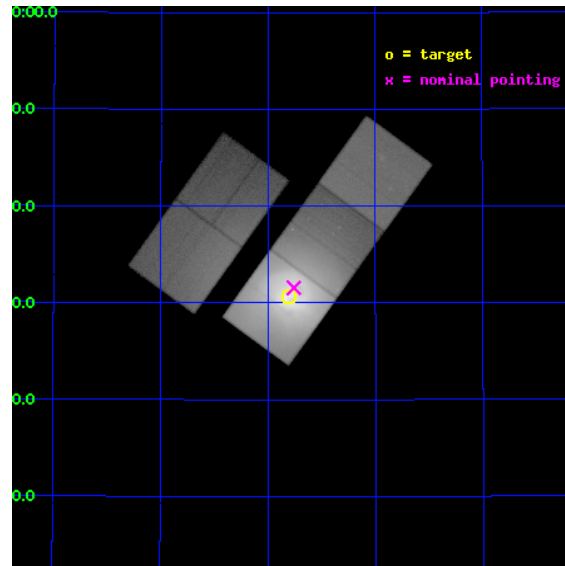
L2 Processing Date : Dec 10 2012

Contents

1	Front	2
2	OBI	3
2.1	OBI	3
2.1.1	Images	3
2.1.2	Bias	3
2.1.3	Parameters	4
2.1.4	Events	4
2.2	Compared Parameters	5
2.3	Aspect	6
2.4	Star Slots	9
2.4.1	Slot 3	9
2.4.2	Slot 4	10
2.4.3	Slot 5	11
2.4.4	Slot 6	12
2.4.5	Slot 7	13
2.5	FID Slots	14
2.5.1	Slot 0	14
2.5.2	Slot 1	15
2.5.3	Slot 2	16
A	Summary	17
A.1	Status	17
A.2	Comments	17

1 Front

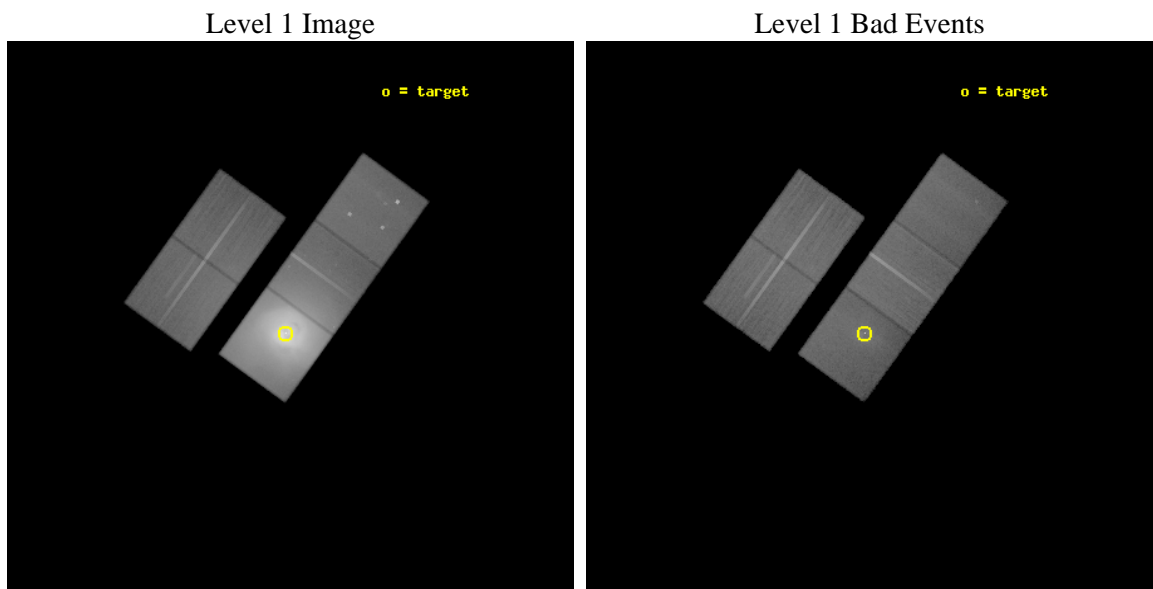
seq_num	800397	Sequence number
obs_id	6139	Observation id
title	A Megasecond Image of the Core of the Perseus Cluster	Proposal tit
observer	Professor Andrew Fabian	Principal investigator
object	Abell 426	Source name
dtcycle	0	
cycle	P	events from which exps? Prim/Second/Both
ra_targ	49.950833	Observer's specified target RA [deg]
dec_targ	41.511722	Observer's specified target Dec [deg]
ra_nom	49.939742546691	Nominal RA [deg]
dec_nom	41.526103611524	Nominal Dec [deg]
roll_nom	125.90770199882	Nominal Roll [deg]
revision	3	Processing version of data
ontime	57172.218934208	Sum of GTIs [s]
livetime	56425.221804257	Livetime [s]
ontime2	57178.336774528	Sum of GTIs [s]
ontime3	57165.813863516	Sum of GTIs [s]
ontime5	57178.459894538	Sum of GTIs [s]
ontime6	57175.277854383	Sum of GTIs [s]
ontime7	57172.218934208	Sum of GTIs [s]
l2events	5647992	Number of level 2 events



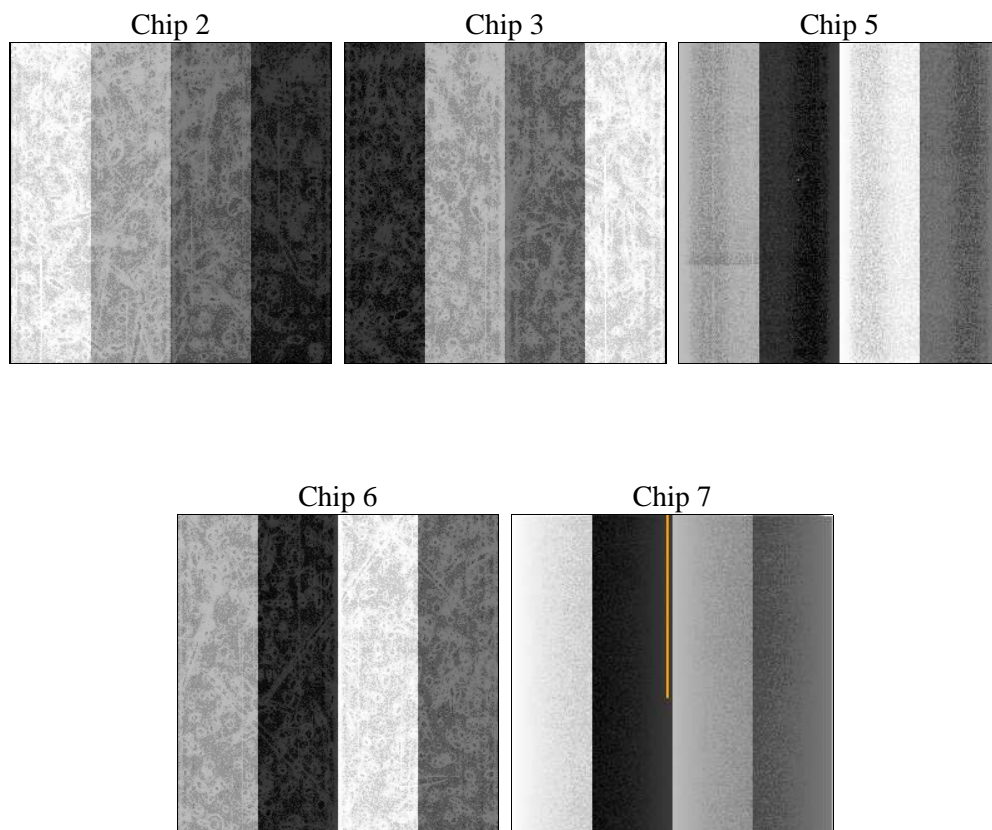
2 OBI

2.1 OBI

2.1.1 Images



2.1.2 Bias



2.1.3 Parameters

obi_num	0	Obi number	sched_exp_time	57144.035000	[s] Scheduled observation exposure time
ascdsver	8.5	Processing system revision	ontime	57172.218934208	Sum of GTIs [s]
caldbver	4.5.4	 	ontime2	57178.336774528	Sum of GTIs [s]
date	2012-12-09T20:34:54	Date and time of file creation	ontime3	57165.813863516	Sum of GTIs [s]
revision	3	Processing version of data	ontime5	57178.459894538	Sum of GTIs [s]
			ontime6	57175.277854383	Sum of GTIs [s]
			ontime7	57172.218934208	Sum of GTIs [s]
			l1events	7354526	Number of level 1 events

2.1.4 Events

	ccd 2	ccd 3	ccd 5	ccd 6	ccd 7
level 1 events	520272	601537	602777	950100	4679840
rejected events	354449	342923	257700	353861	275560
rejected %	68%	57%	42%	37%	5%

	ccd 2	ccd 3	ccd 5	ccd 6	ccd 7
grade 0 events	118233	193575	61069	462449	1192571
	22%	32%	10%	48%	25%
grade 1 events	777	1125	738	2096	3388
	0%	0%	0%	0%	0%
grade 2 events	21480	30262	103718	66079	1158115
	4%	5%	17%	6%	24%
grade 3 events	8221	11121	18852	21750	516831
	1%	1%	3%	2%	11%
grade 4 events	8092	11229	18191	21741	507983
	1%	1%	3%	2%	10%
grade 5 events	12792	15135	41402	16642	73164
	2%	2%	6%	1%	1%
grade 6 events	9808	12436	143265	24258	1029510
	1%	2%	23%	2%	21%
grade 7 events	340869	326654	215542	335085	198278
	65%	54%	35%	35%	4%

2.2 Compared Parameters

Parameter	Planned	Actual	Parameter	Planned	Actual
Instrument	ACIS	ACIS	Obspar format version number	7	7
Detector	ACIS-23567	ACIS-23567	Obspar file type	PREDICTED	ACTUAL
Grating	NONE	NONE	Obspar update status	NONE	UPDATED
Data mode	FAINT	FAINT	Number of optional ACIS chips dropped	0	0
Observation mode	POINTING	POINTING	On-chip summing requested	N	N
[deg] Pointing RA	49.973146	49.93974254669067	Subarray requested	NONE	NONE
[deg] Pointing Dec	41.515323	41.52610361152418	Alternating exposures requested	N	N
[deg] Pointing Roll	125.728929	125.9077019988183	[s] Primary exposure time	0.000000	3.1
[mm] SIM focus pos	-0.684267	-0.6828225247311905			
[mm] SIM defocus	0	0.001444936568705701			
[mm] SIM translation stage pos	-190.132523	-190.1425803651734			
[mm] SIM translation stage offset	0	0.01005778216563158			
[s] Observation start time (MET)	213317681.184000	213316677.2955			
Observation start date	2004-10-04T22:53:37	2004-10-04T22:37:57			
[s] Observation end time (MET)	213374825.184000	213375051.04811			
Observation end date	2004-10-05T14:46:01	2004-10-05T14:50:51			
Read mode	TIMED	TIMED			

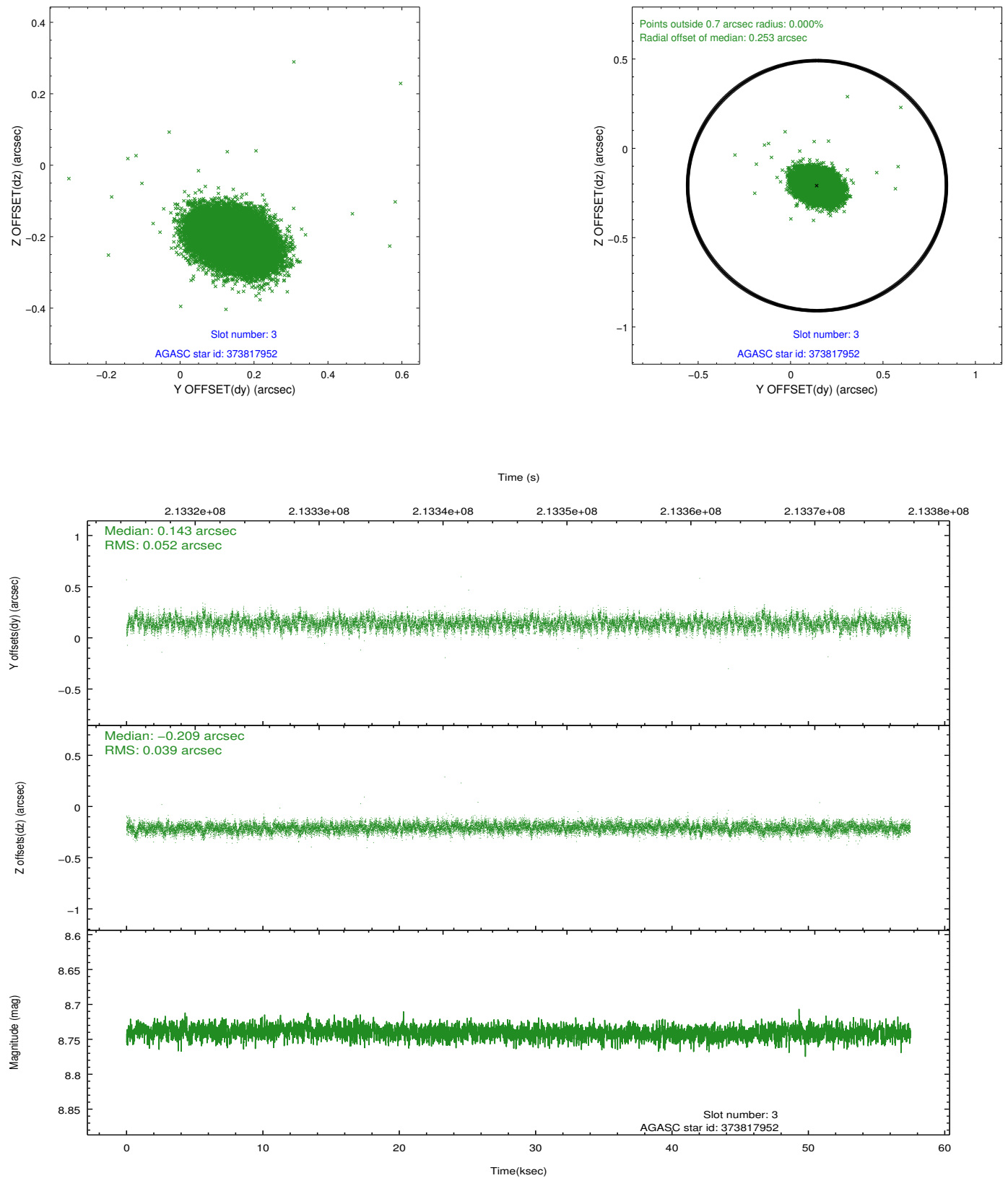
2.3 Aspect

Slot Statistics

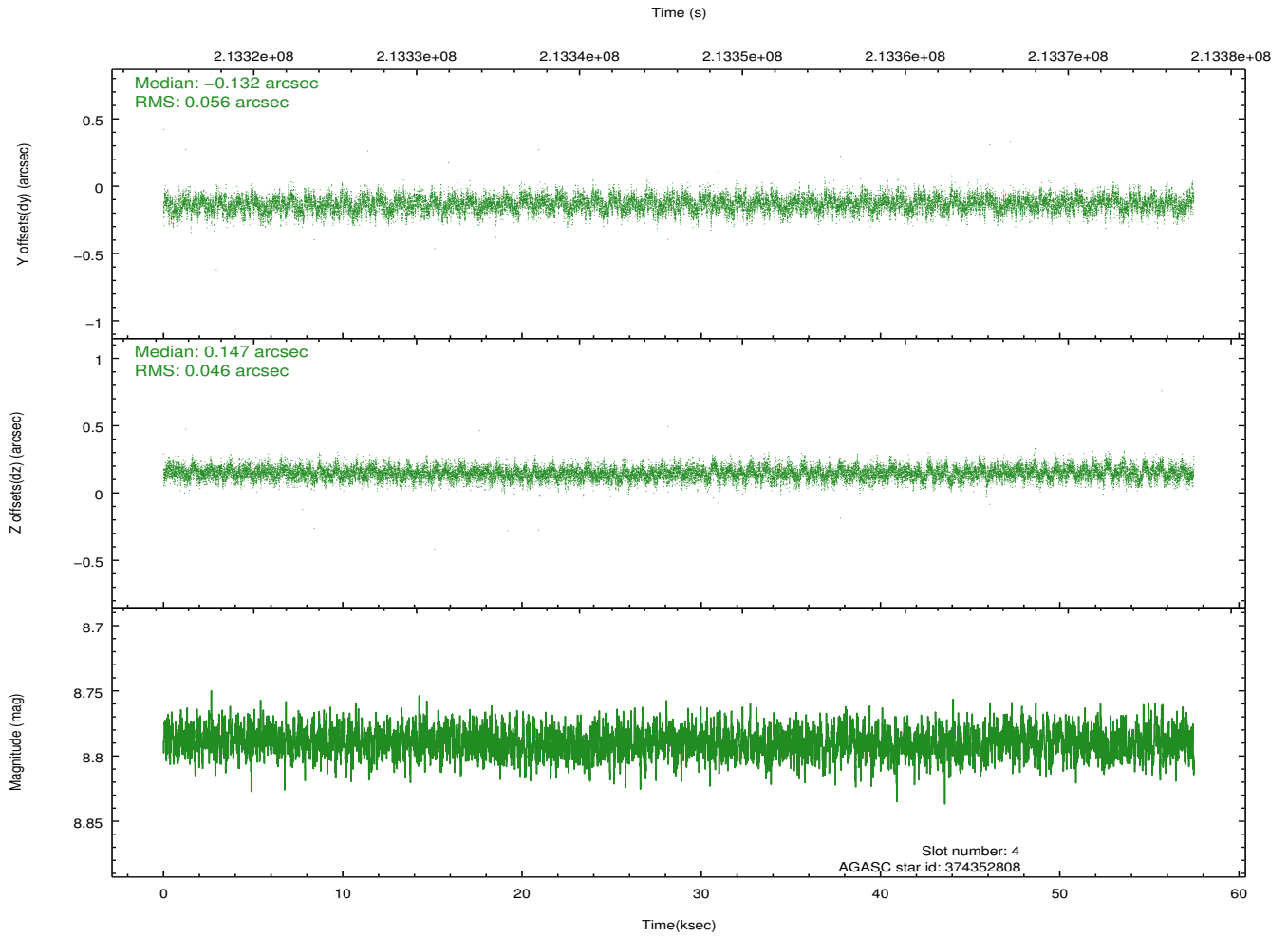
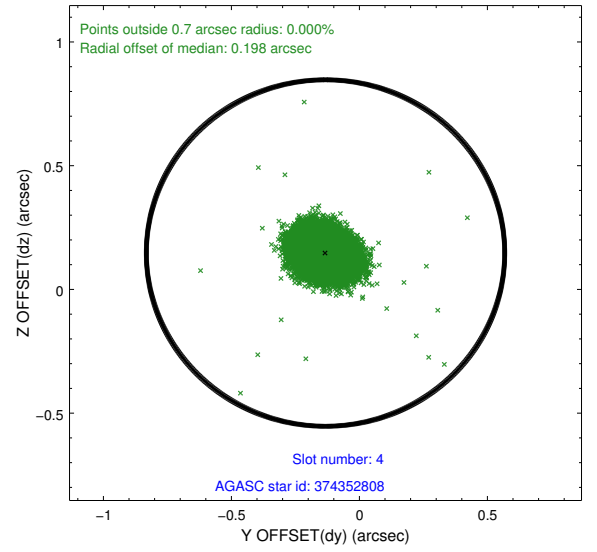
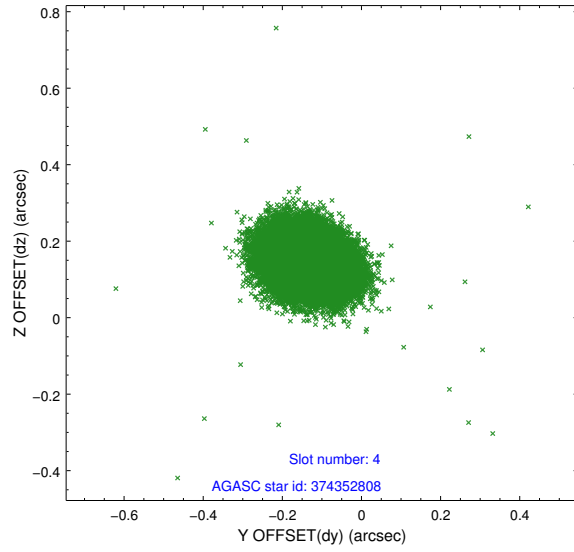
slot	status	id	mag	n_pts	med_dy	med_dz	dr1	dr2	ra	dec	mean_y	mean_z
0	FID	ACIS-S-2	7.11	14017	-0.040	-0.016	0.008	0.015	0.000000	0.000000	-760.75	-1731.47
1	FID	ACIS-S-4	7.21	14017	0.098	0.024	0.010	0.018	0.000000	0.000000	2152.63	177.16
2	FID	ACIS-S-5	7.23	14017	-0.089	0.001	0.009	0.016	0.000000	0.000000	-1813.74	170.67
3	GUIDE	373817952	8.74	28032	0.143	-0.209	0.068	0.114	49.913424	40.978510	-1473.77	1260.09
4	GUIDE	374352808	8.79	28020	-0.132	0.147	0.076	0.123	49.969955	42.208621	2031.27	-1450.05
5	GUIDE	374345008	9.38	28017	-0.005	-0.104	0.082	0.136	48.768668	41.619367	2215.17	2399.78
6	GUIDE	375534552	8.19	28033	0.105	-0.032	0.065	0.100	50.877490	41.206927	-2320.77	-1347.48
7	GUIDE	376057824	8.35	28028	-0.108	0.202	0.066	0.111	50.665569	41.926280	124.13	-2373.46

2.4 Star Slots

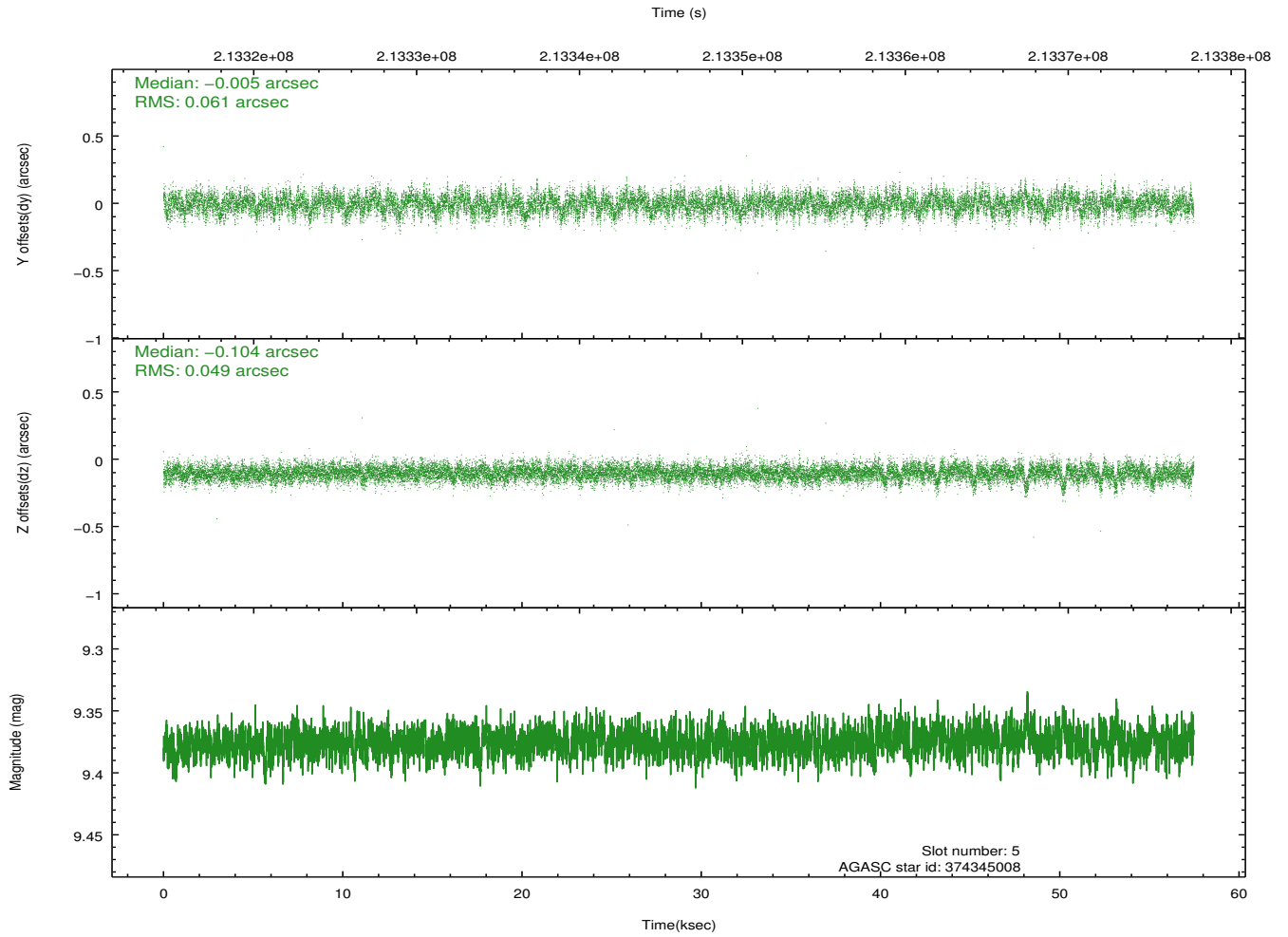
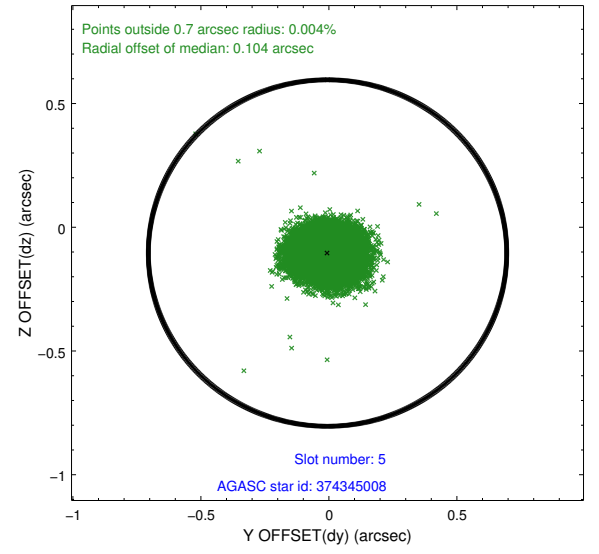
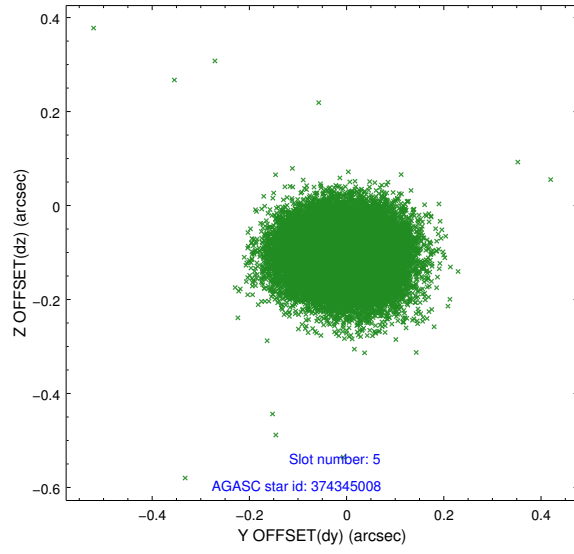
2.4.1 Slot 3



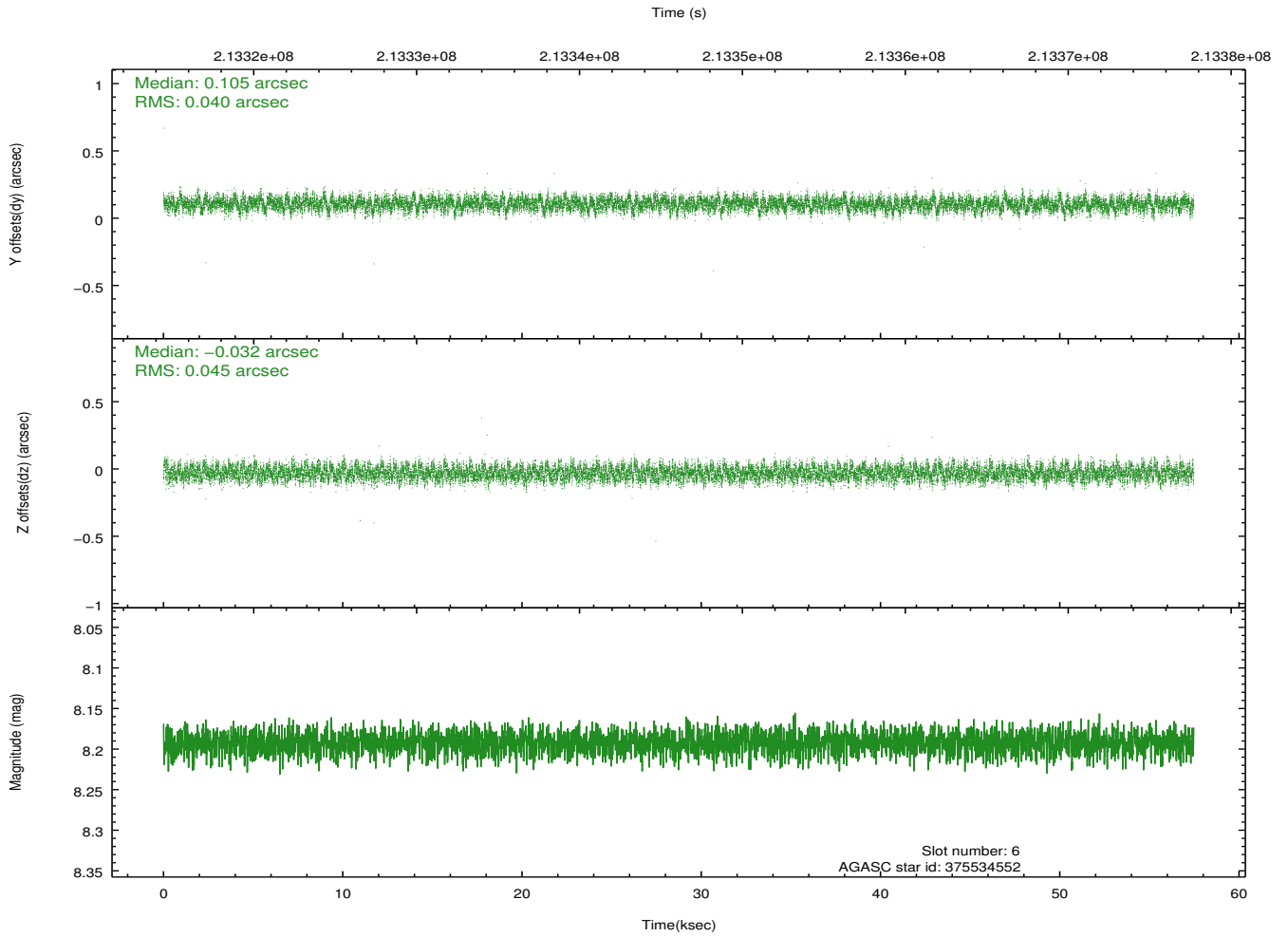
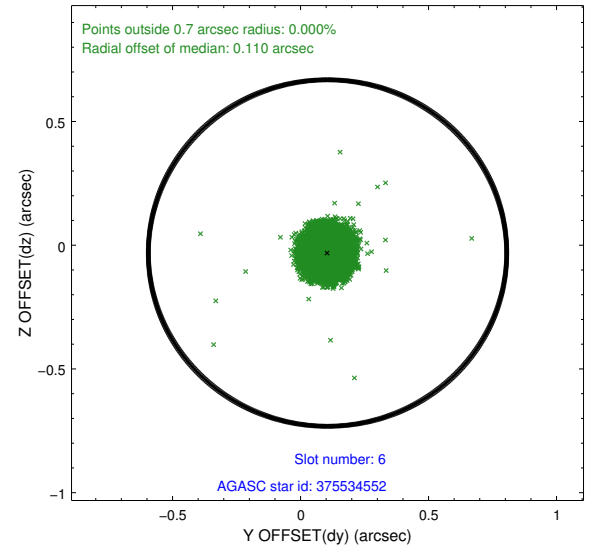
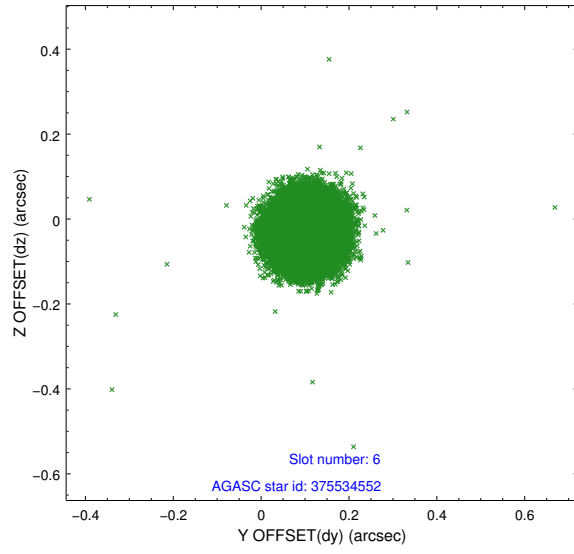
2.4.2 Slot 4



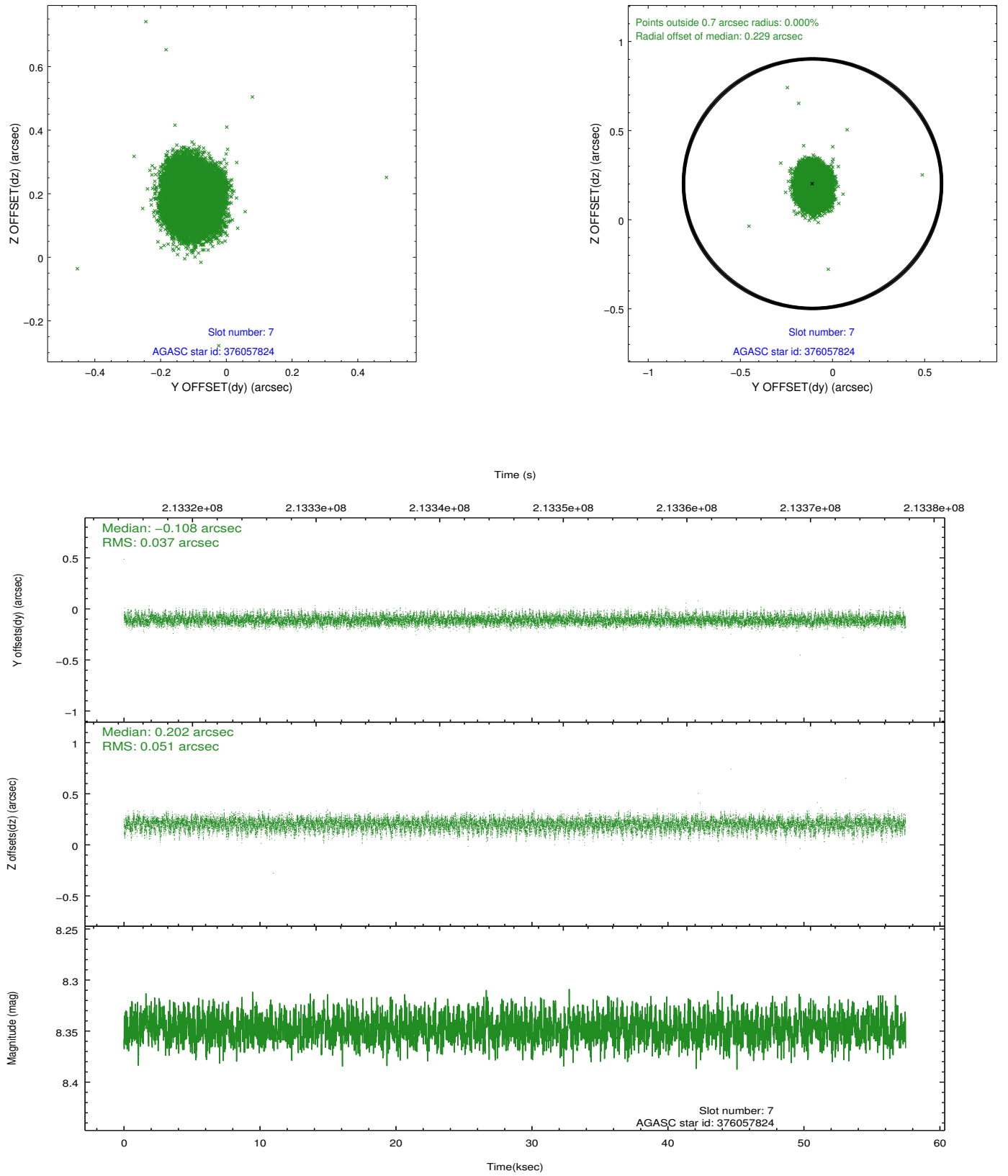
2.4.3 Slot 5



2.4.4 Slot 6

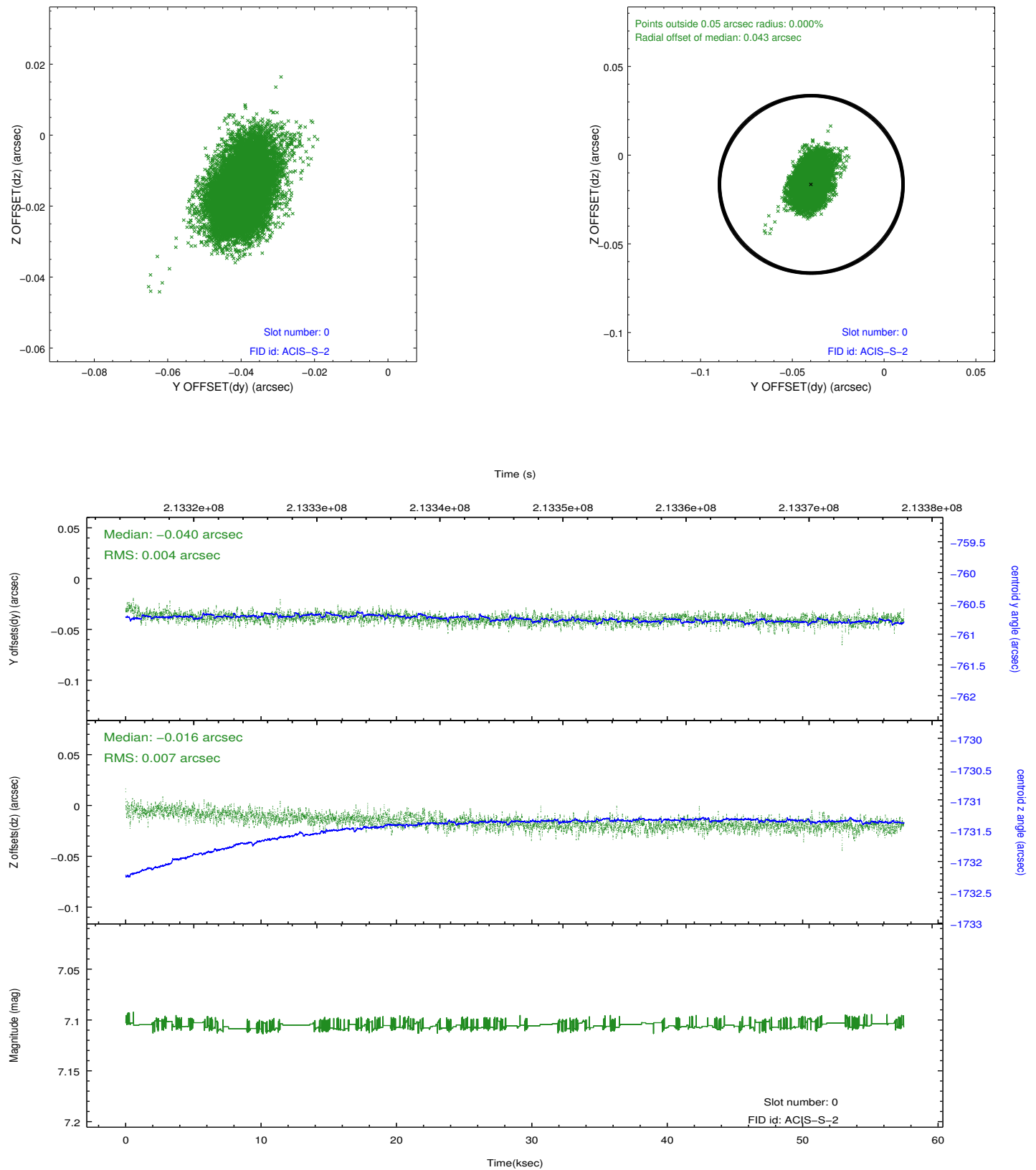


2.4.5 Slot 7

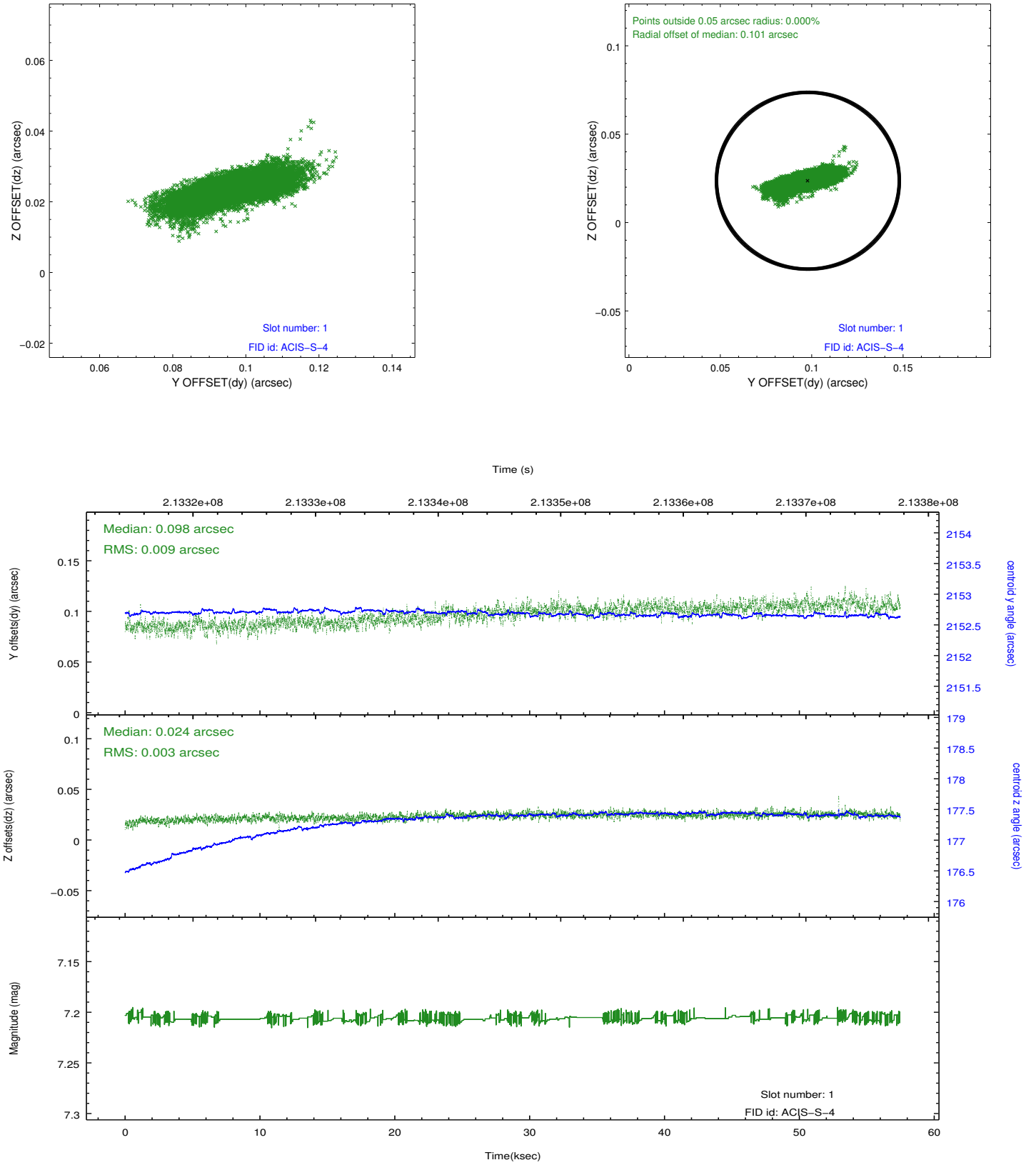


2.5 FID Slots

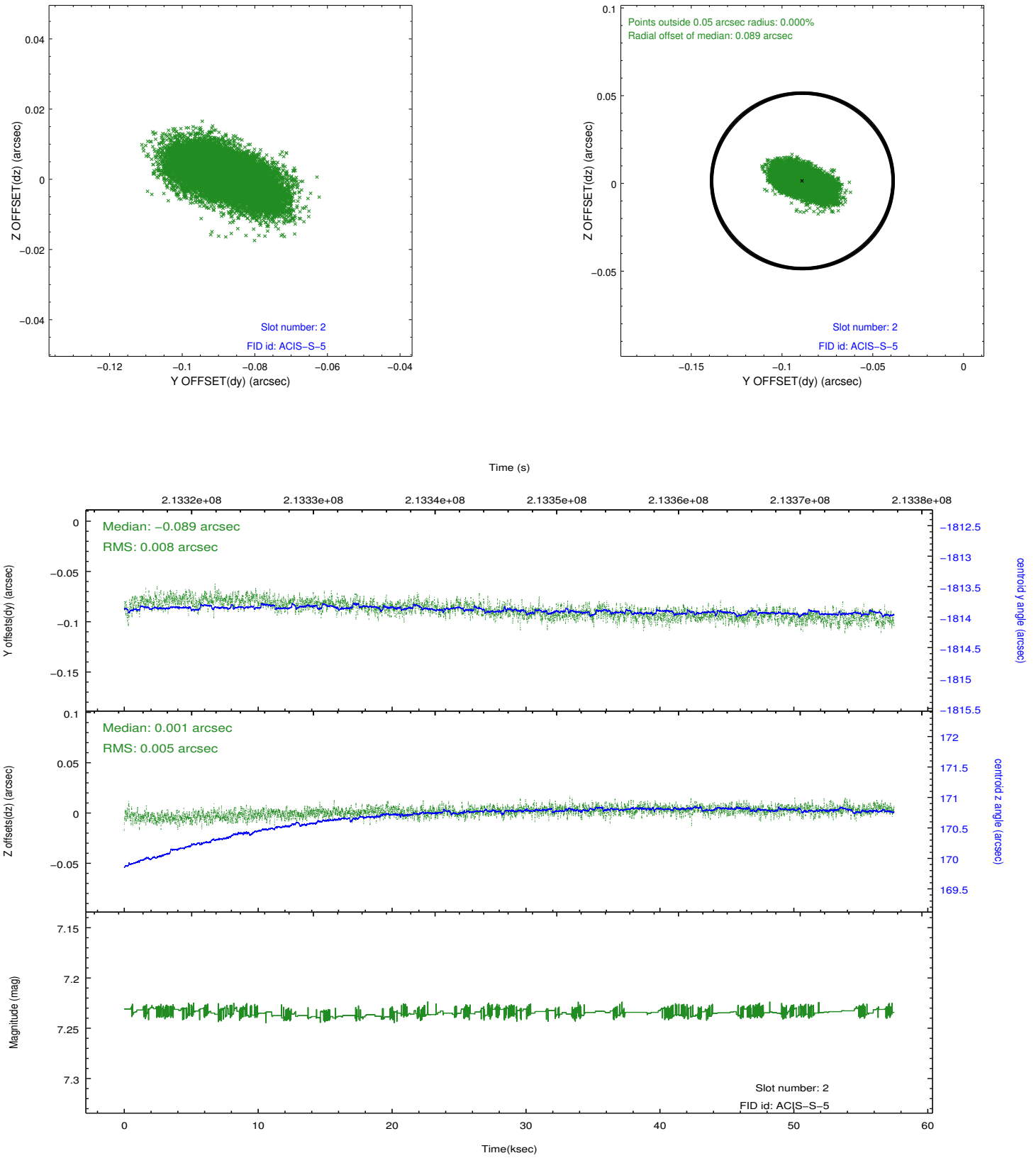
2.5.1 Slot 0



2.5.2 Slot 1



2.5.3 Slot 2



A Summary

A.1 Status

V&V Scientist	Jen Lauer
V&V Date (YYYY-MM-DD)	2013.01.03
V&V Edition	1
V&V Disposition and Status	OK
V&V Charge Time	57.173

A.2 Comments