

V&V Reference Report

L2 ASCDS Version : 7.6.7.2

Observation 5356 - L2 Version 001
Chandra X-Ray Center

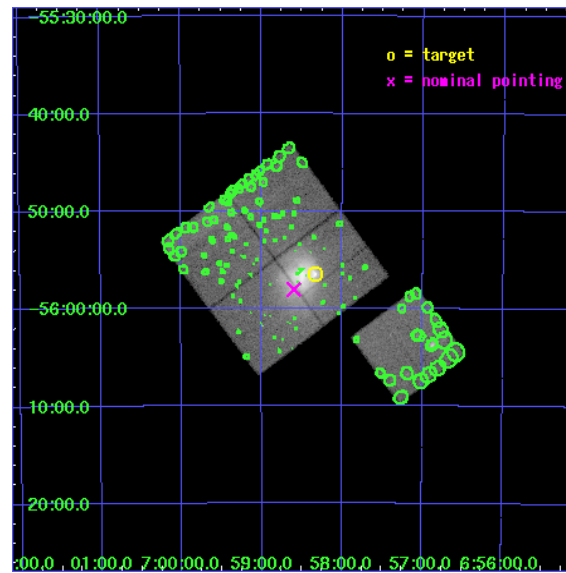
L2 Processing Date : Apr 26 2006

Contents

1	Front	2
2	OBI	3
2.1	OBI	3
2.1.1	Images	3
2.1.2	Bias	3
2.1.3	Parameters	4
2.1.4	Events	4
2.2	Compared Parameters	5
2.3	Aspect	6
2.4	Star Slots	9
2.4.1	Slot 3	9
2.4.2	Slot 4	10
2.4.3	Slot 5	11
2.4.4	Slot 6	12
2.4.5	Slot 7	13
2.5	FID Slots	14
2.5.1	Slot 0	14
2.5.2	Slot 1	15
2.5.3	Slot 2	16
3	Point Sources	17
A	Summary	18
A.1	Status	18
A.2	Comments	18

1 Front

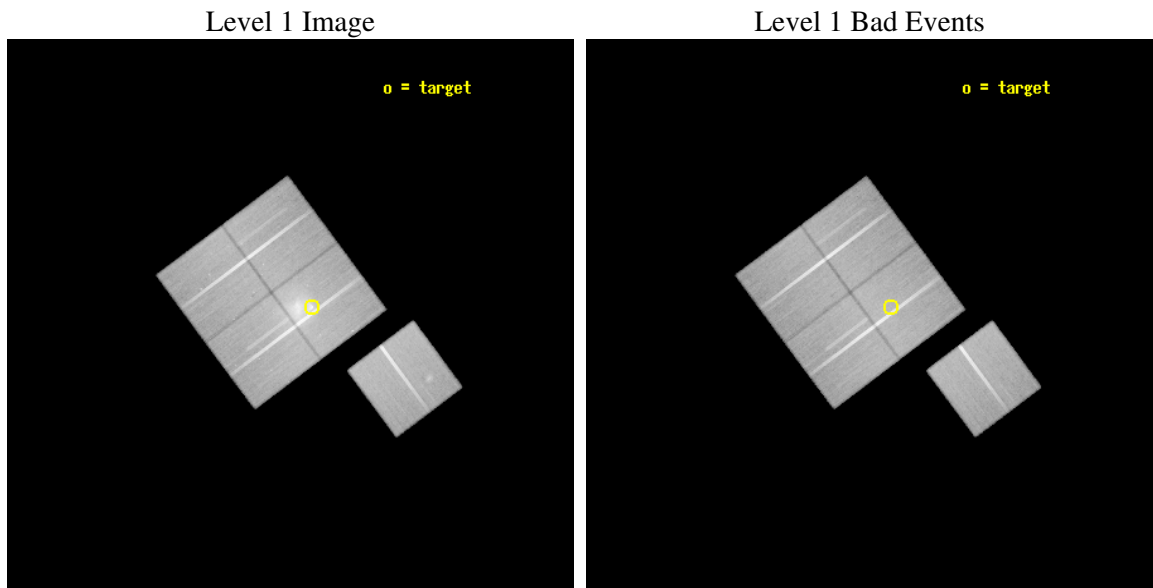
seq_num	800429
obs_id	5356
title	THE MOST INTERESTING CLUSTER IN THE UNIVERSE
observer	Dr Maxim Markevitch
object	1E0657-56
dtcycle	0
cycle	P
ra_targ	104.5827
dec_targ	-55.9415
ra_nom	104.64989300163
dec_nom	-55.967568756368
roll_nom	143.26436004551
revision	2
ontime	98483.572128385
livetime	97196.811755977
ontime0	98489.853909522
ontime1	98496.135879785
ontime2	98483.572128385
ontime3	98492.994899631
ontime6	98499.276850045
l2events	395871



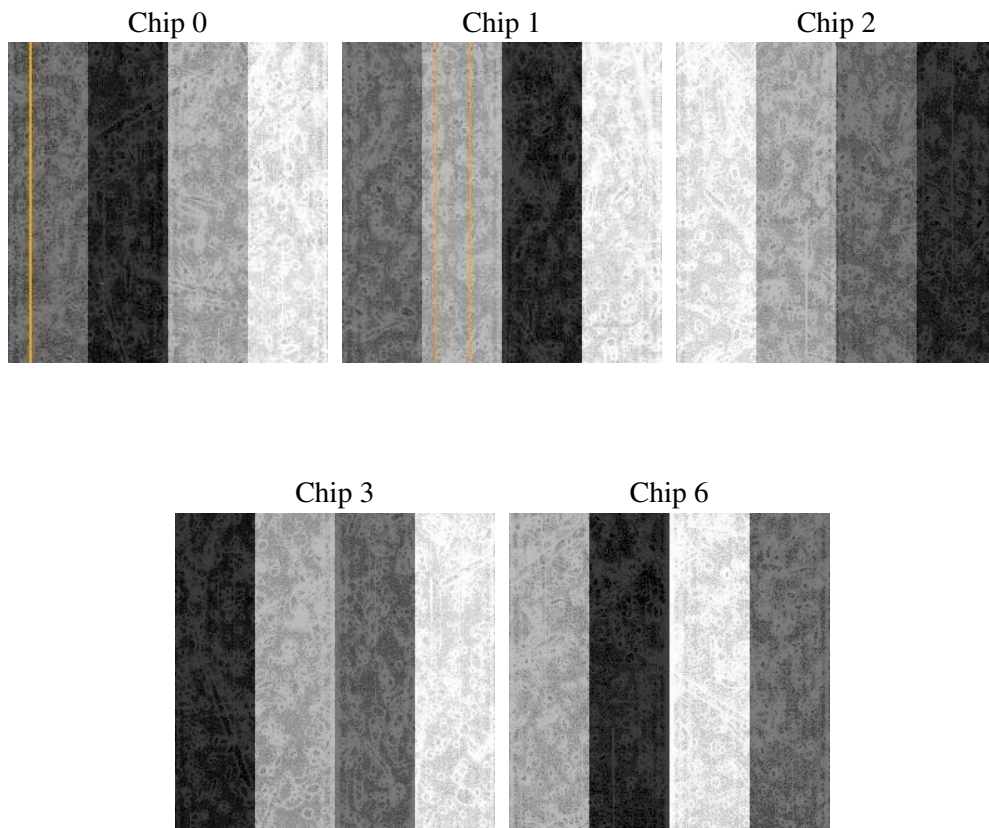
2 OBI

2.1 OBI

2.1.1 Images



2.1.2 Bias



2.1.3 Parameters

obi_num	0
ascdsver	7.6.7.2
caldbver	3.2.1
date	2006-04-26T20:44:42
revision	2

sched_exp_time	98370.000000
ontime	98919.597998977
ontime0	98925.879780114
ontime1	98932.161750376
ontime2	98919.597998977
ontime3	98929.020750314
ontime6	98935.302720636
l1events	3176457

2.1.4 Events

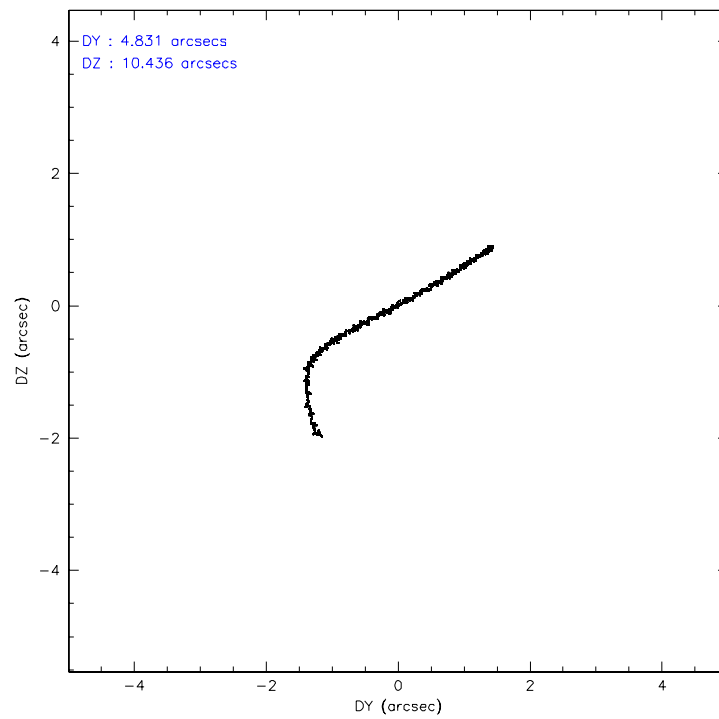
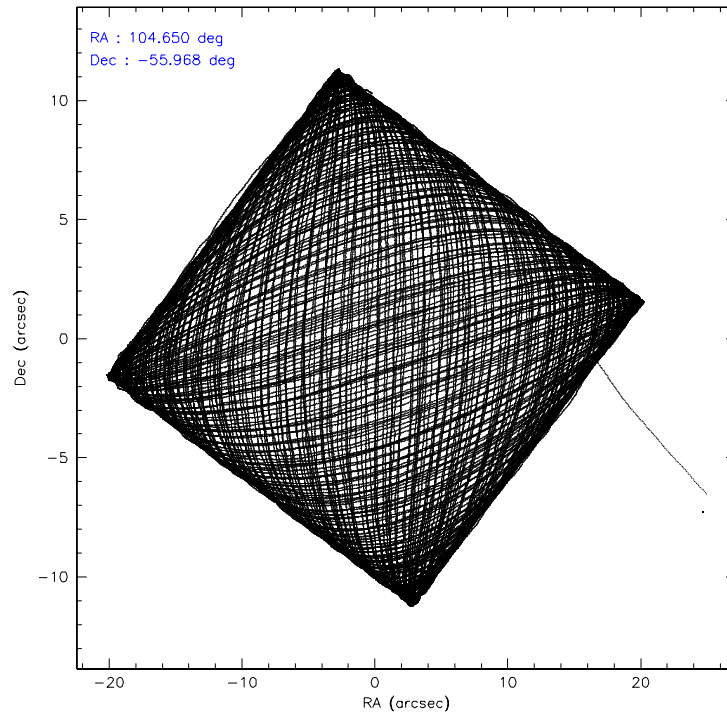
	ccd 0	ccd 1	ccd 2	ccd 3	ccd 6
level 1 events	575328	577603	756770	641679	625077
rejected events	512240	507736	580729	561917	559750
rejected %	89%	87%	76%	87%	89%

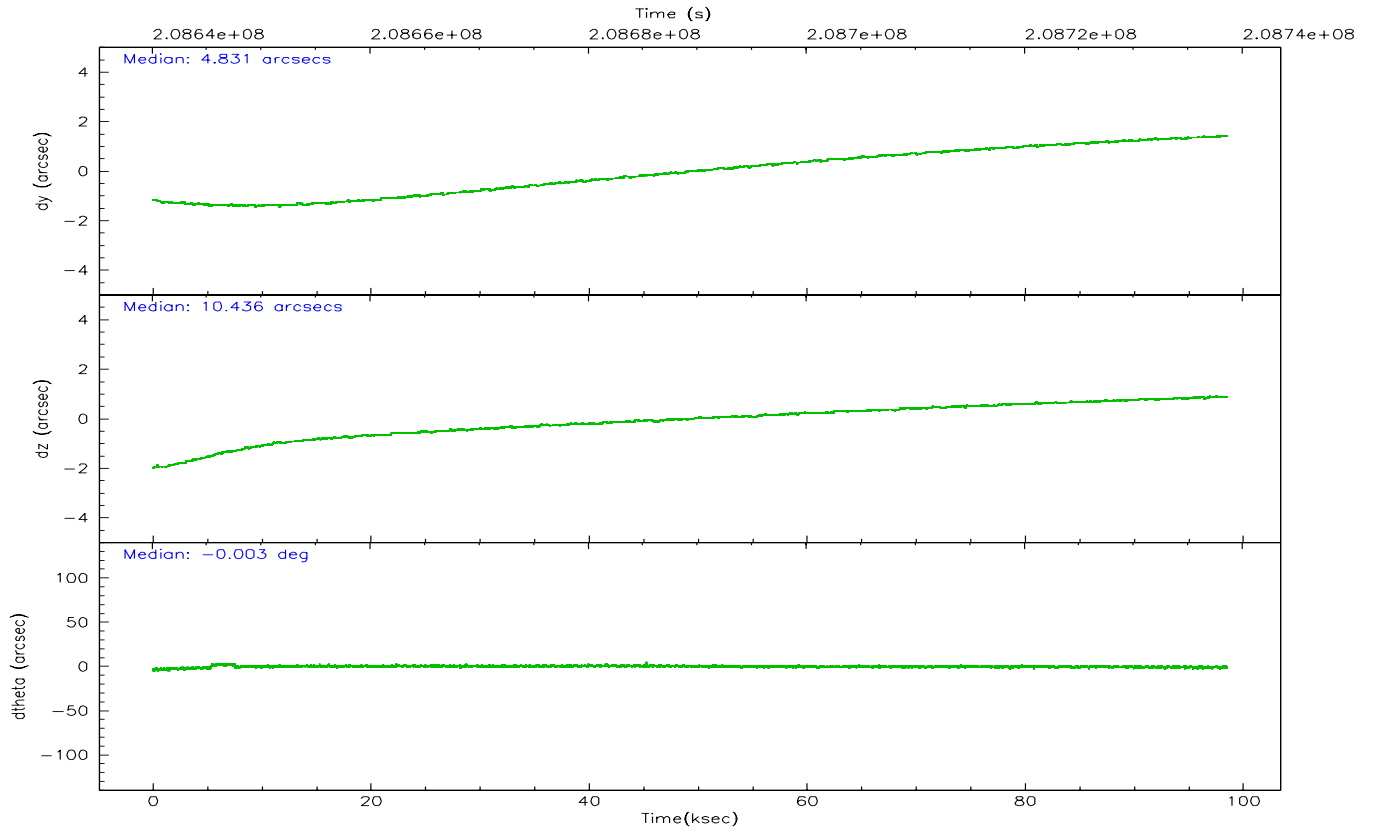
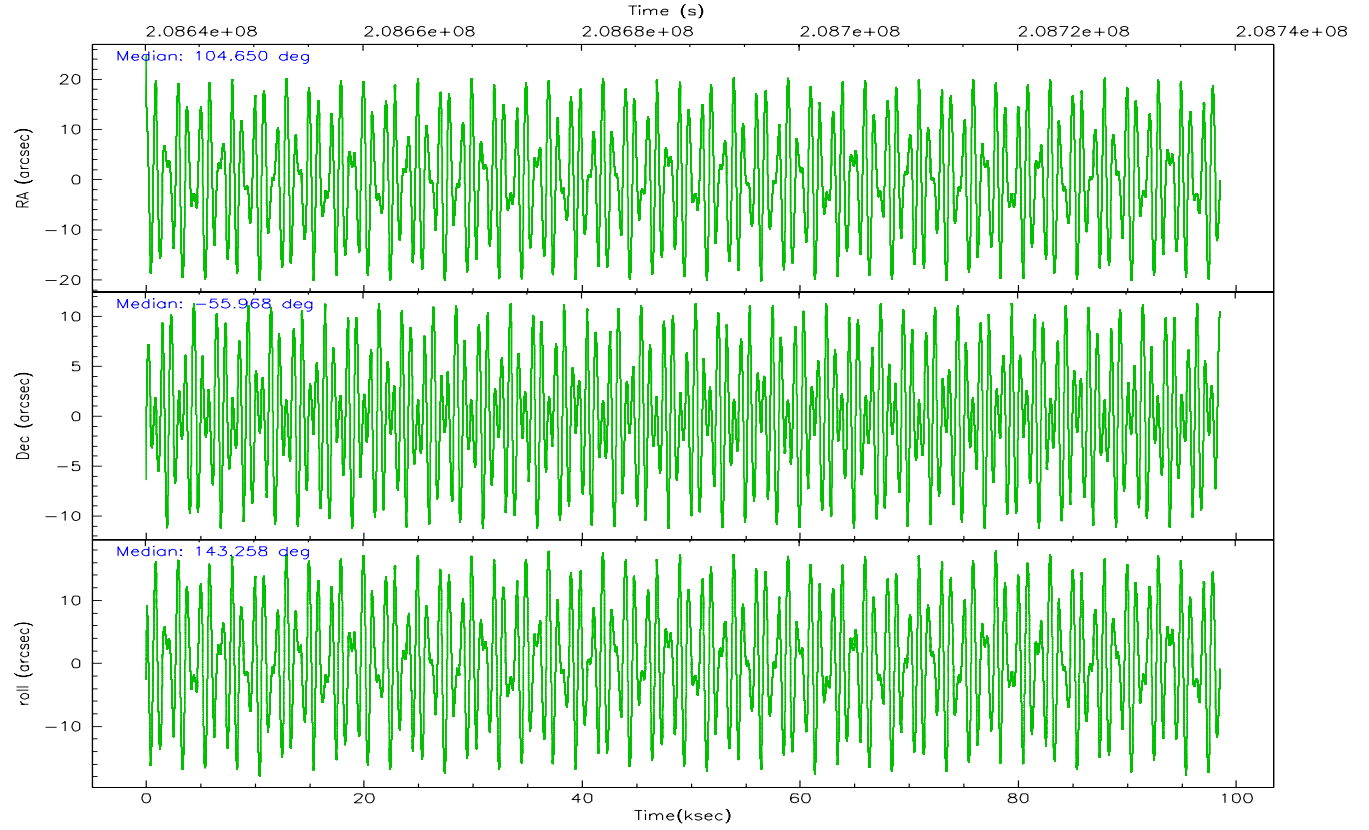
	ccd 0	ccd 1	ccd 2	ccd 3	ccd 6
grade 0 events	23179	26635	116905	38769	24227
	4%	4%	15%	6%	3%
grade 1 events	292	293	990	401	290
	0%	0%	0%	0%	0%
grade 2 events	14535	14830	24986	14381	13524
	2%	2%	3%	2%	2%
grade 3 events	7134	7722	10271	7424	7278
	1%	1%	1%	1%	1%
grade 4 events	6582	7434	10204	7195	7167
	1%	1%	1%	1%	1%
grade 5 events	21299	22899	20795	23893	23933
	3%	3%	2%	3%	3%
grade 6 events	11933	13527	14137	12264	13402
	2%	2%	1%	1%	2%
grade 7 events	490374	484263	558482	537352	535256
	85%	83%	73%	83%	85%

2.2 Compared Parameters

Parameter	Planned	Actual	Parameter	Planned	Actual
Instrument	ACIS	ACIS	Obspar format version number	6	6
Detector	ACIS-01236	ACIS-01236	Obspar file type	PREDICTED	ACTUAL
Grating	NONE	NONE	Obspar update status	NONE	UPDATED
Data mode	VFAINT	VFAINT	On-chip summing requested	N	N
Observation mode	POINTING	POINTING	Subarray requested	NONE	NONE
Pointing RA	104.698490	104.649893001633	Alternating exposures requested	N	N
Pointing Dec	-55.970654	-55.96756875636844	Primary exposure time	0.000000	3.1
Pointing Roll	143.095949	143.2643600455135			
SIM focus pos (mm)	-0.782348	-0.7809083437167272			
SIM defocus (mm)	0	0.001439871863259334			
SIM translation stage pos (mm)	-224.592463	-224.5962429424501			
SIM translation stage offset (mm)	-9	-8.996210060479569			
Observation start time	208640238.184000	208639049.09937			
Observation start date	2004-08-11T19:36:14	2004-08-11T19:17:29			
Observation end time	208738608.184000	208739625.17885			
Observation end date	2004-08-12T22:55:44	2004-08-12T23:13:45			
Read mode	TIMED	TIMED			

2.3 Aspect



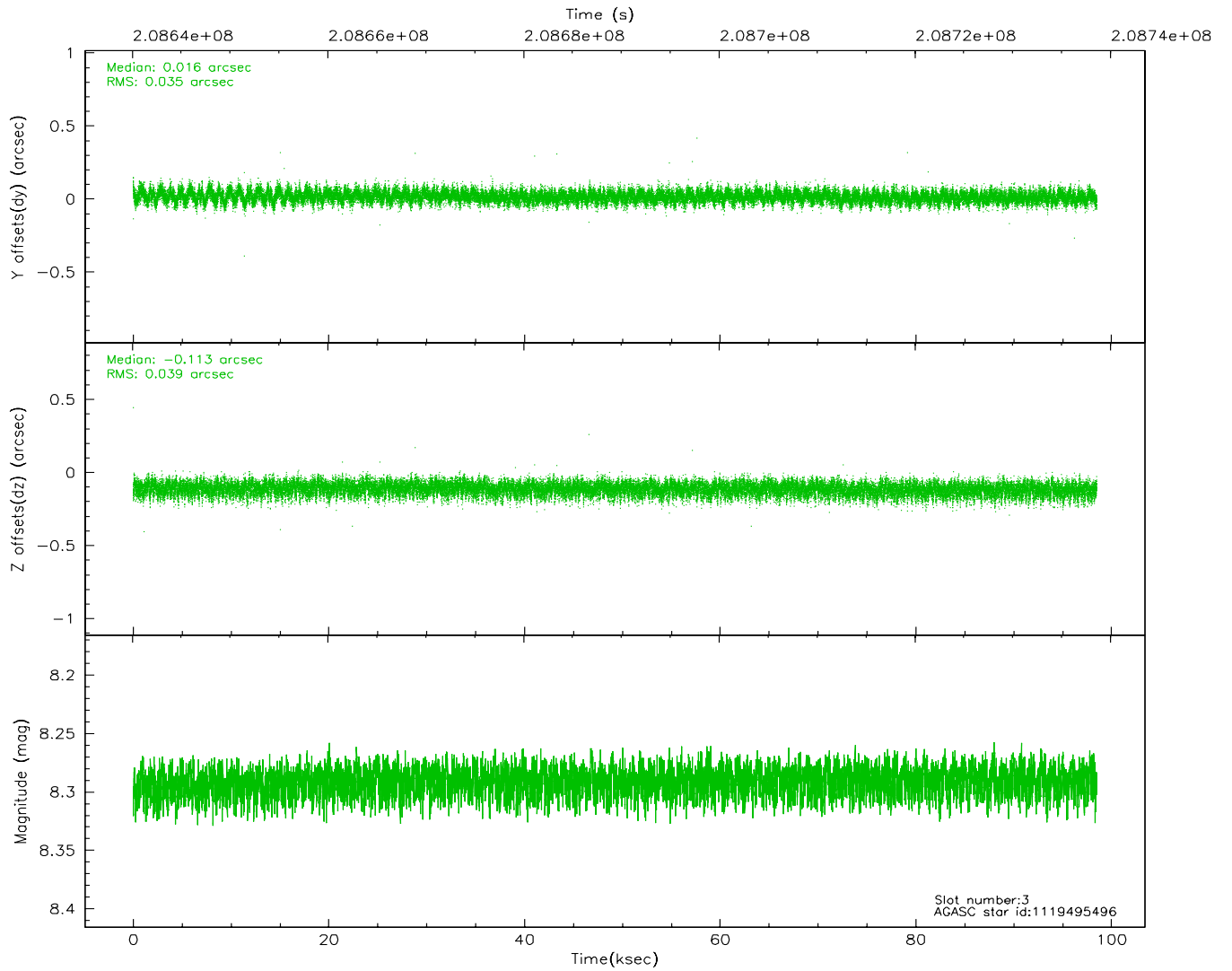
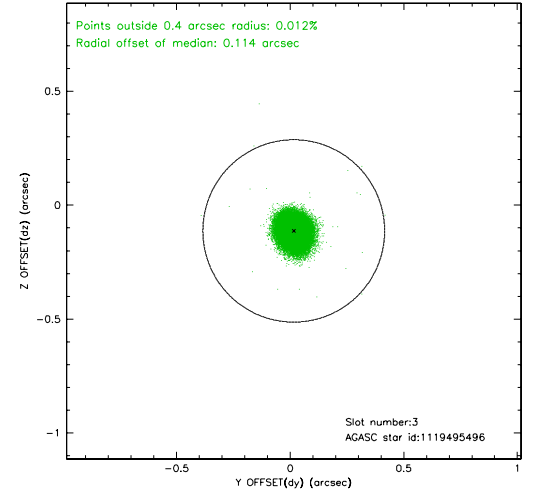
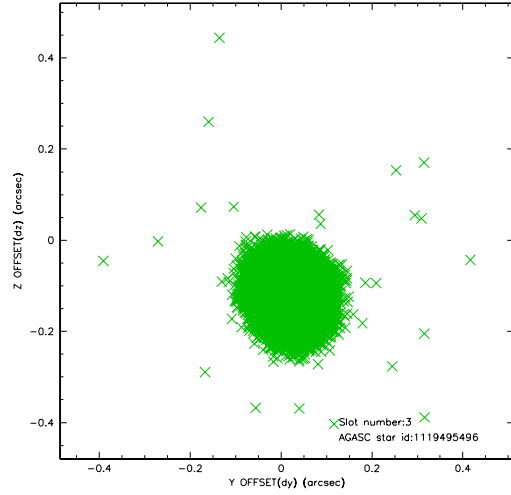


Slot Statistics

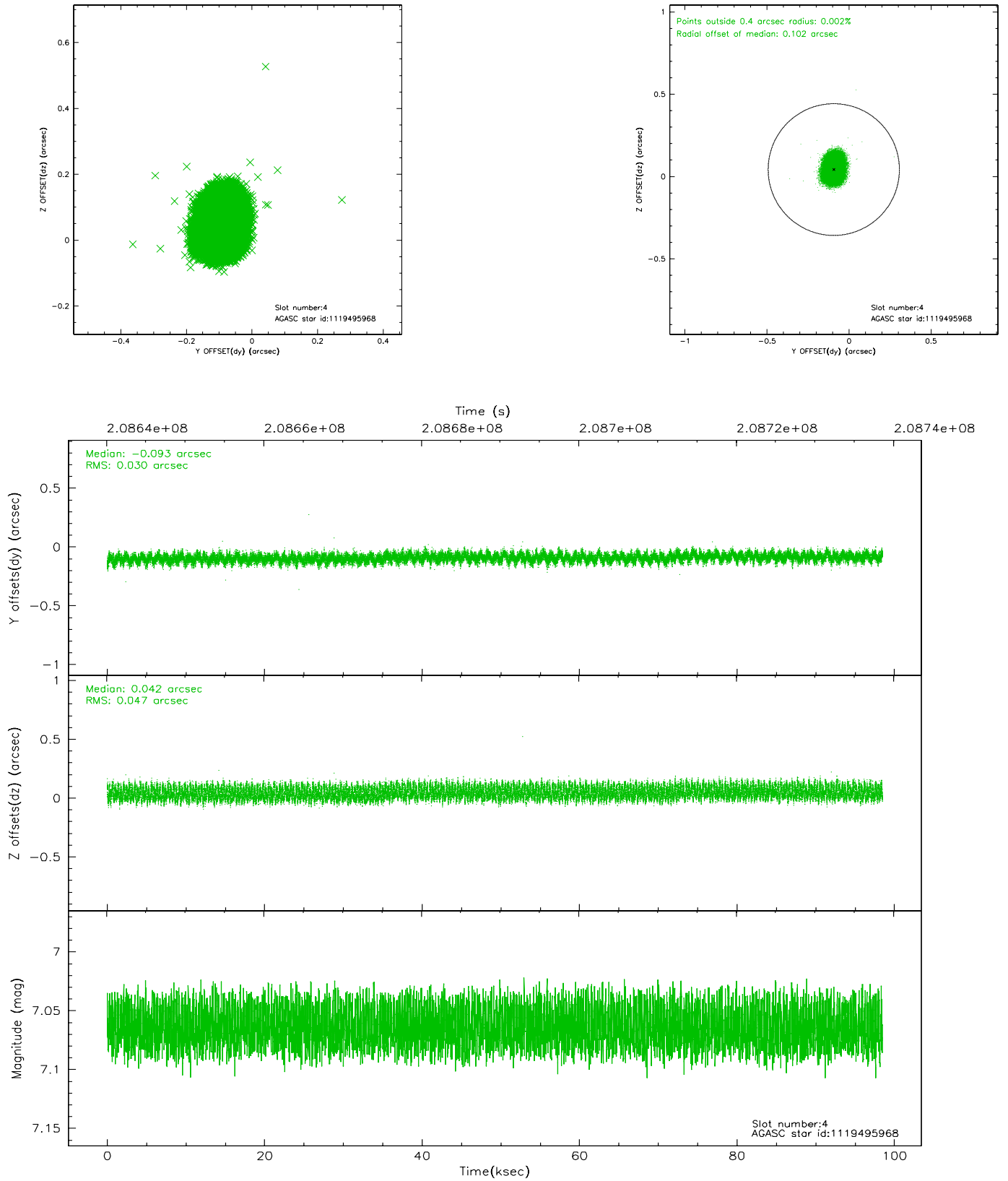
slot	status	id	mag	n_pts	med_dy	med_dz	dr1	dr2	ra	dec	mean_y	mean_z
0	FID	ACIS-I-1	7.22	24027	0.116	-0.199	0.029	0.091	0.000000	0.000000	934.91	-1018.70
1	FID	ACIS-I-4	7.14	24026	-0.036	0.105	0.028	0.058	0.000000	0.000000	2154.24	882.57
2	FID	ACIS-I-5	7.21	24028	-0.180	0.164	0.023	0.047	0.000000	0.000000	-1813.50	879.22
3	GUIDE	1119495496	8.29	48039	0.016	-0.113	0.055	0.090	104.298364	-55.915101	764.34	326.80
4	GUIDE	1119495968	7.06	48056	-0.093	0.042	0.061	0.093	105.873528	-55.948238	-1857.32	-1470.86
5	GUIDE	1119496704	7.85	48046	0.113	0.083	0.068	0.108	104.368364	-55.667750	1190.10	-467.89
6	GUIDE	1119500592	8.70	48034	0.035	0.068	0.085	0.143	105.814889	-55.642715	-1115.06	-2291.24
7	GUIDE	1120026344	6.71	48056	-0.074	-0.073	0.061	0.100	104.651539	-56.394853	-842.31	1277.48

2.4 Star Slots

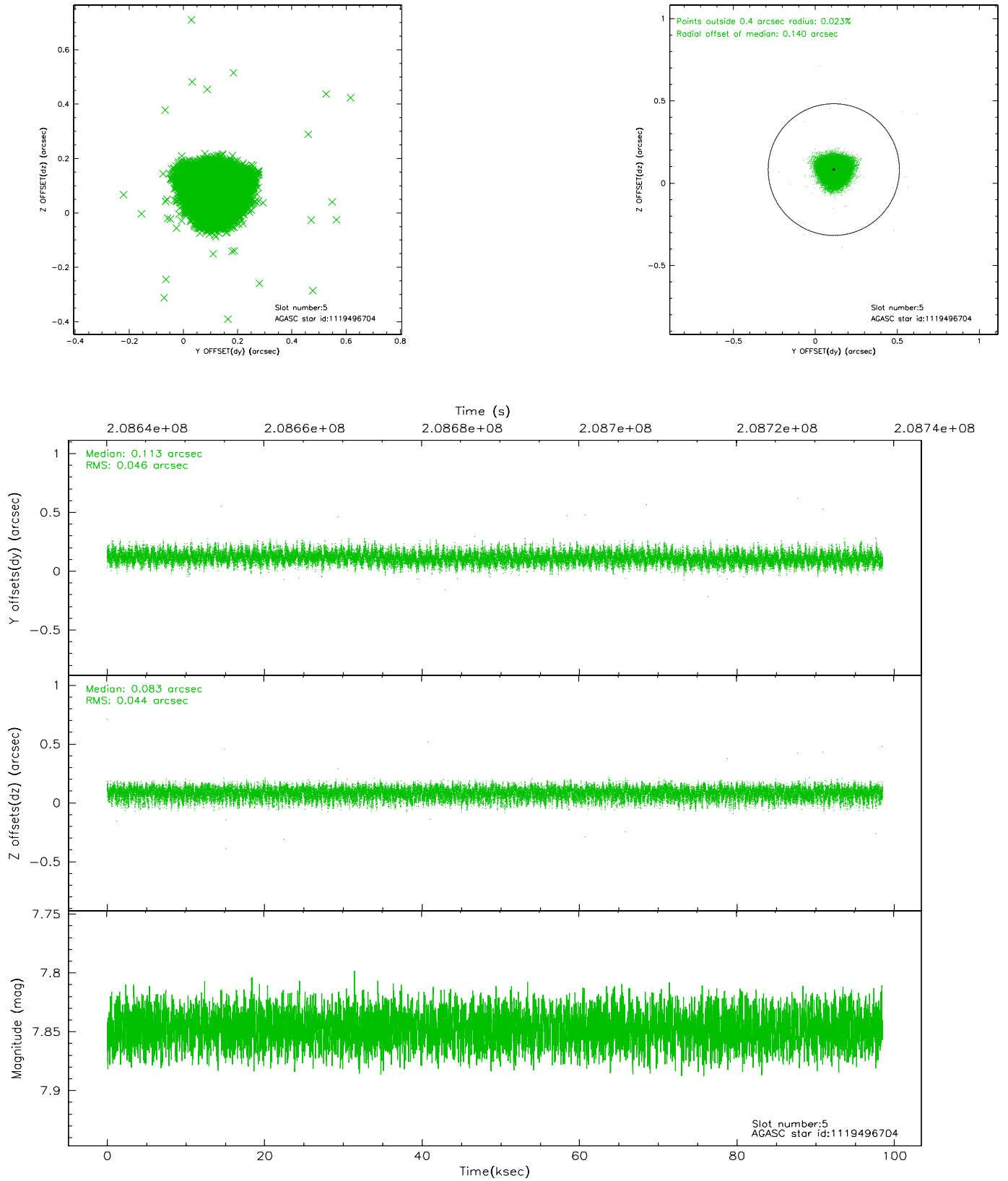
2.4.1 Slot 3



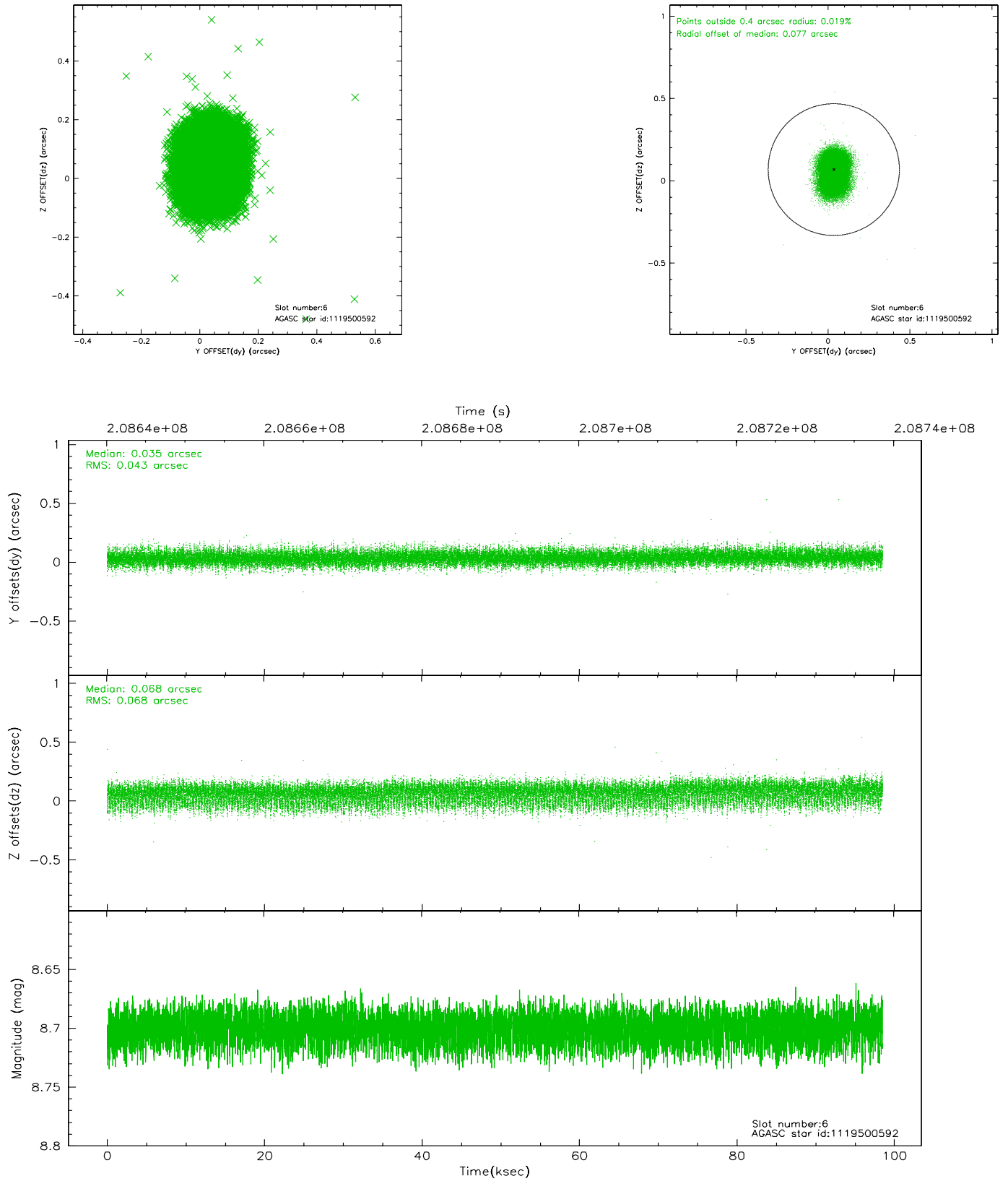
2.4.2 Slot 4



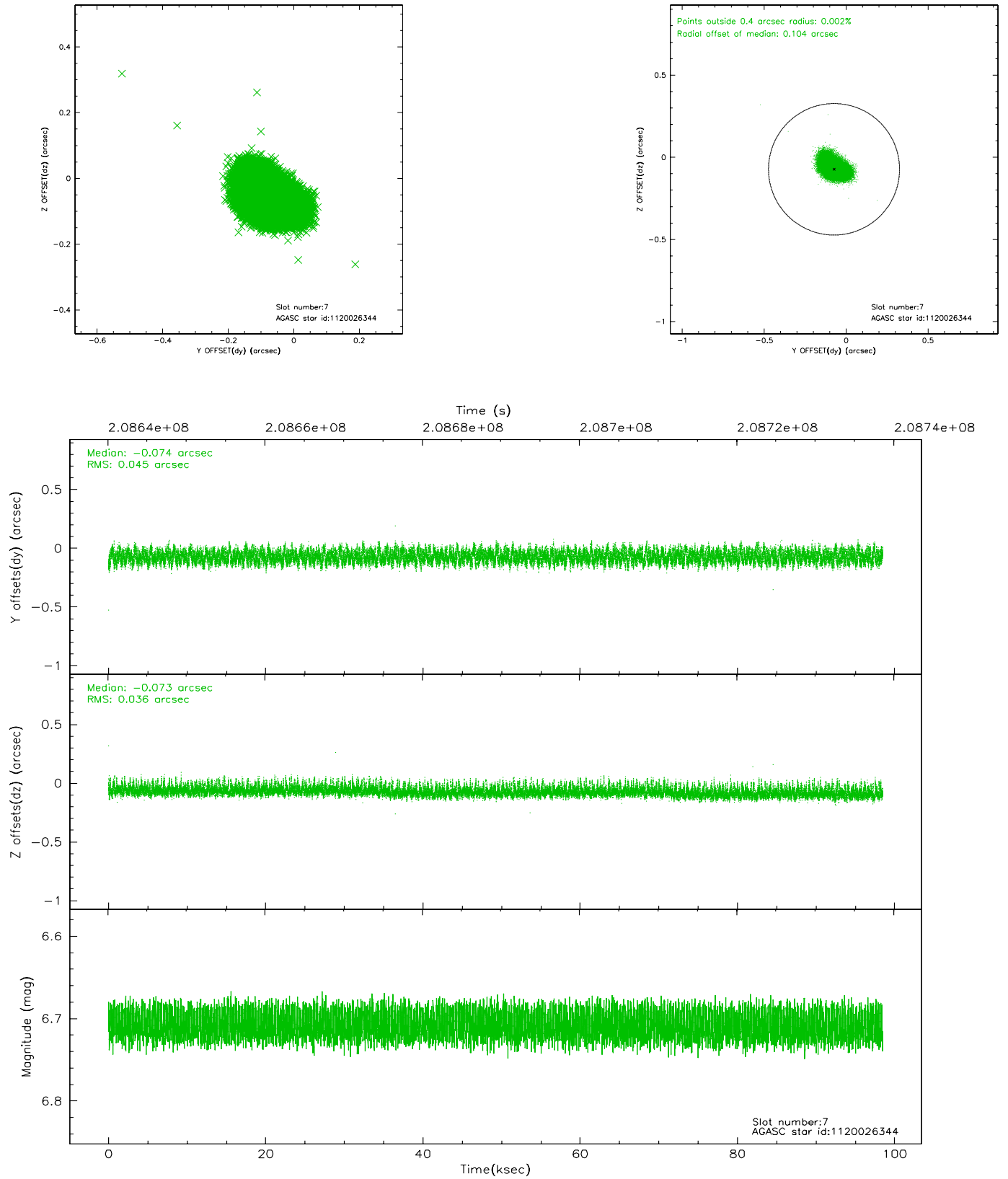
2.4.3 Slot 5



2.4.4 Slot 6

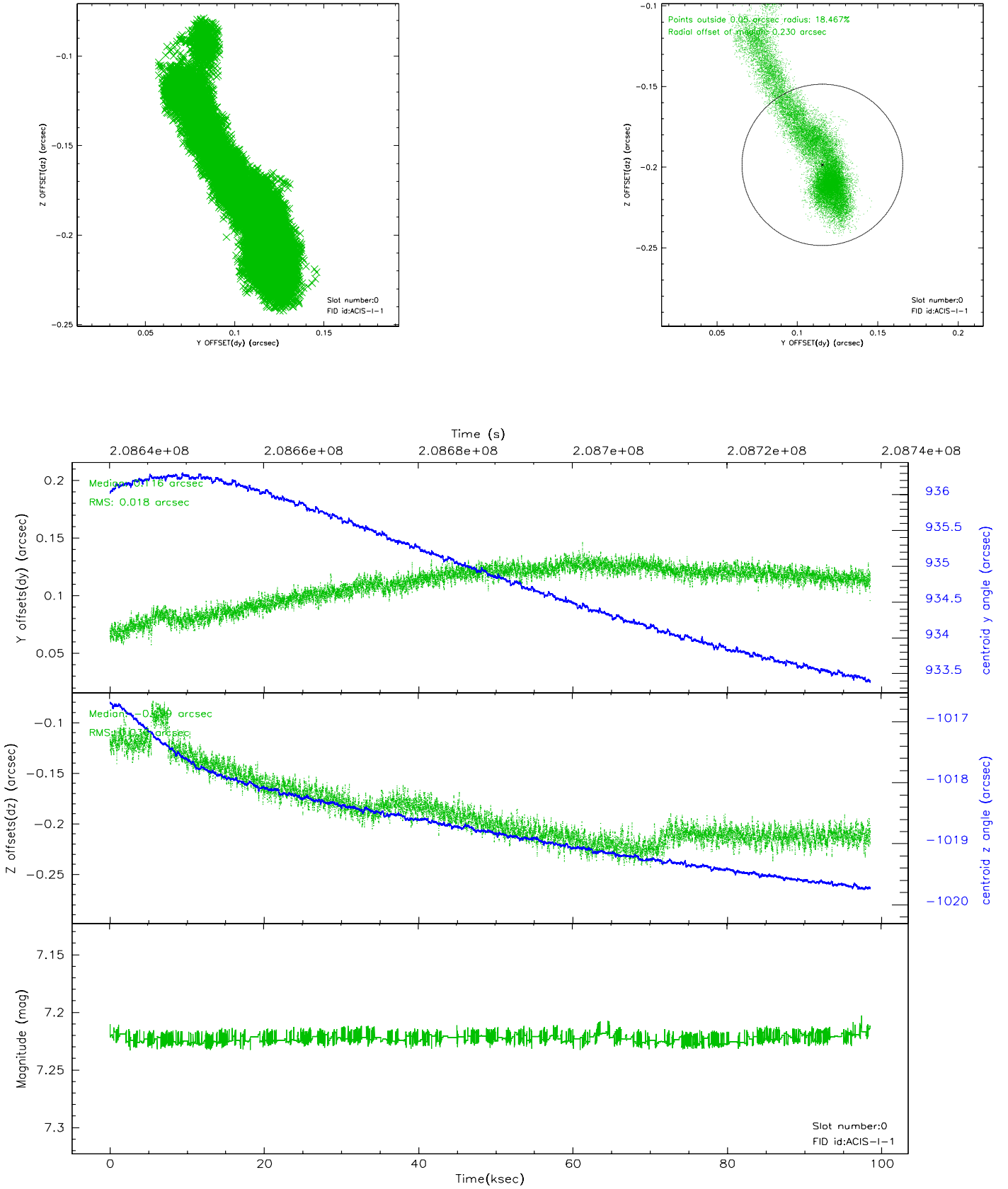


2.4.5 Slot 7

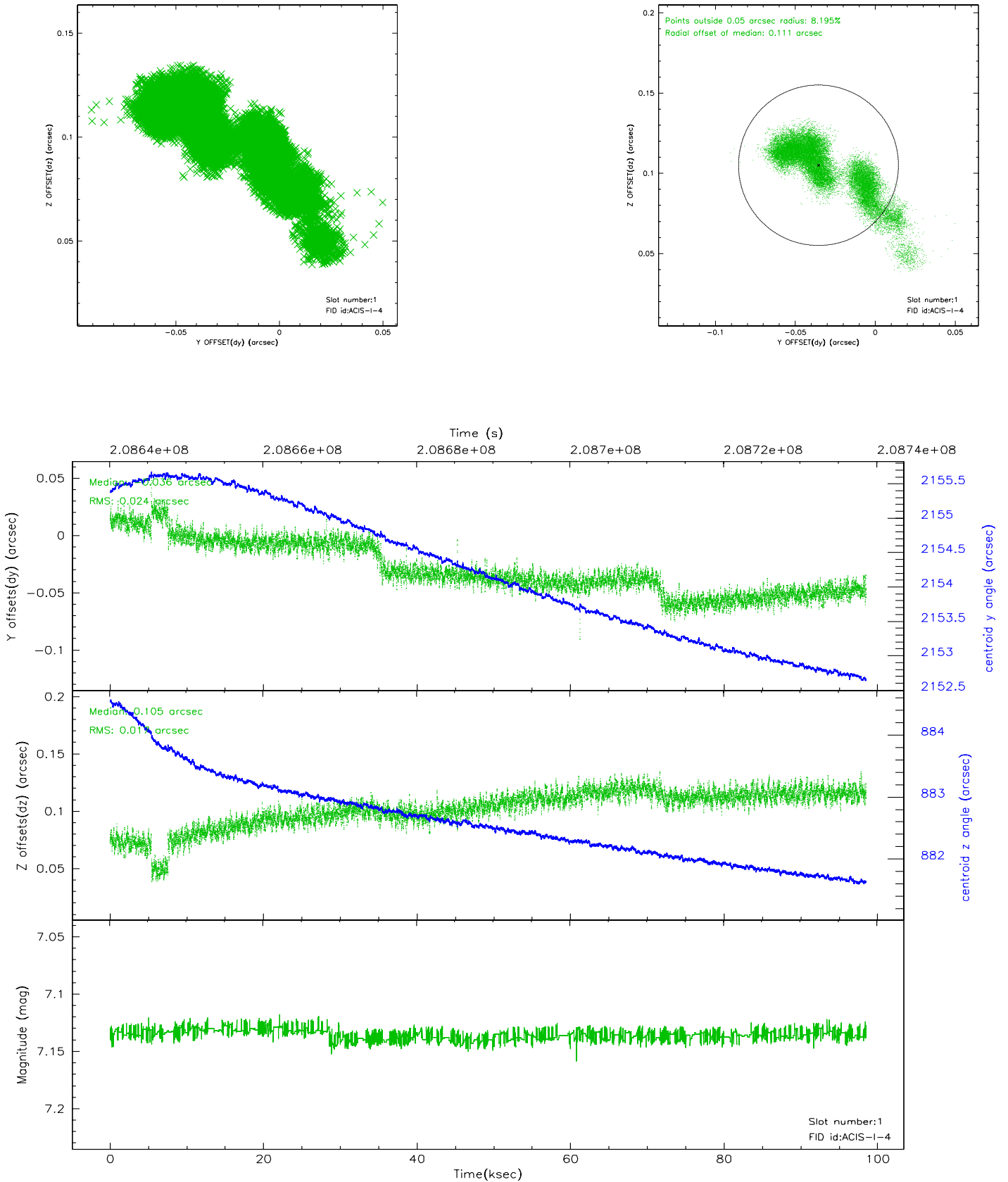


2.5 FID Slots

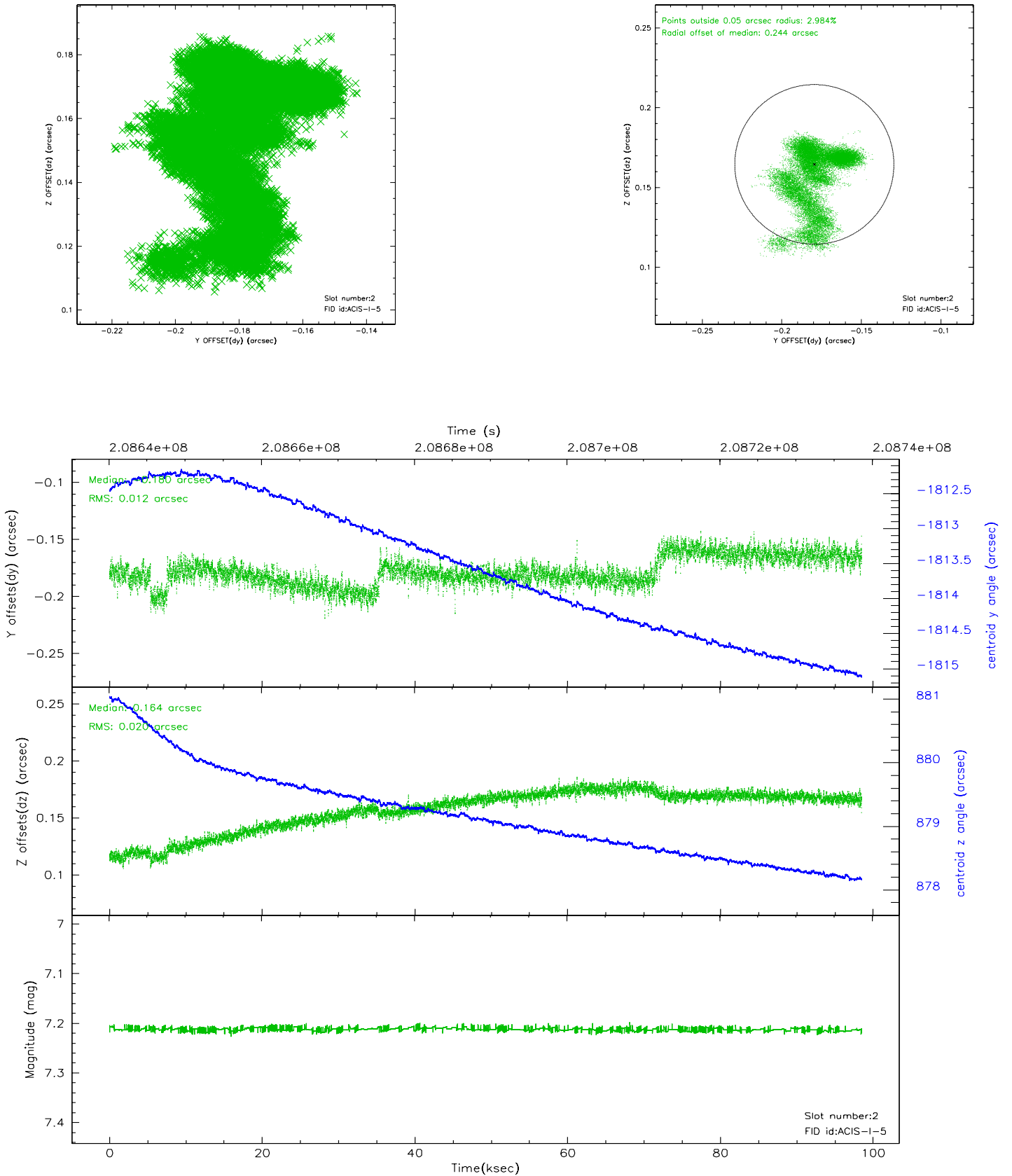
2.5.1 Slot 0



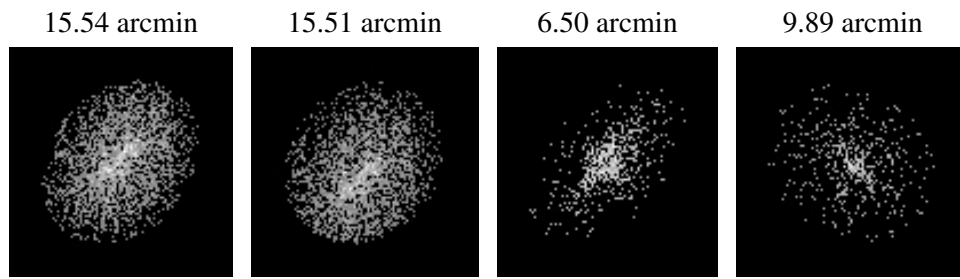
2.5.2 Slot 1



2.5.3 Slot 2



3 Point Sources



A Summary

A.1 Status

V&V Scientist	Beth Sundheim
V&V Date (YYYY-MM-DD)	2006.04.27
V&V Edition	1
V&V Disposition and Status	OK
V&V Charge Time	98.492

A.2 Comments

Focal plane temperature spikes ~10 ksec into observation, then settles.