

V&V Reference Report

L2 ASCDS Version : 8.5

Observation 5353 - L2 Version 4
Chandra X-Ray Center

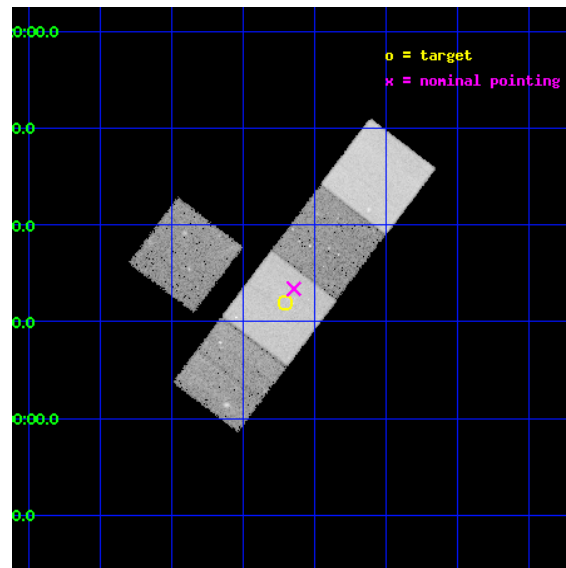
L2 Processing Date : Dec 7 2012

Contents

1	Front	2
2	OBI	3
2.1	OBI	3
2.1.1	Images	3
2.1.2	Bias	3
2.1.3	Parameters	4
2.1.4	Events	4
2.2	Compared Parameters	5
2.3	Aspect	6
2.4	Star Slots	9
2.4.1	Slot 3	9
2.4.2	Slot 4	10
2.4.3	Slot 5	11
2.4.4	Slot 6	12
2.4.5	Slot 7	13
2.5	FID Slots	14
2.5.1	Slot 0	14
2.5.2	Slot 1	15
2.5.3	Slot 2	16
A	Summary	17
A.1	Status	17
A.2	Comments	17

1 Front

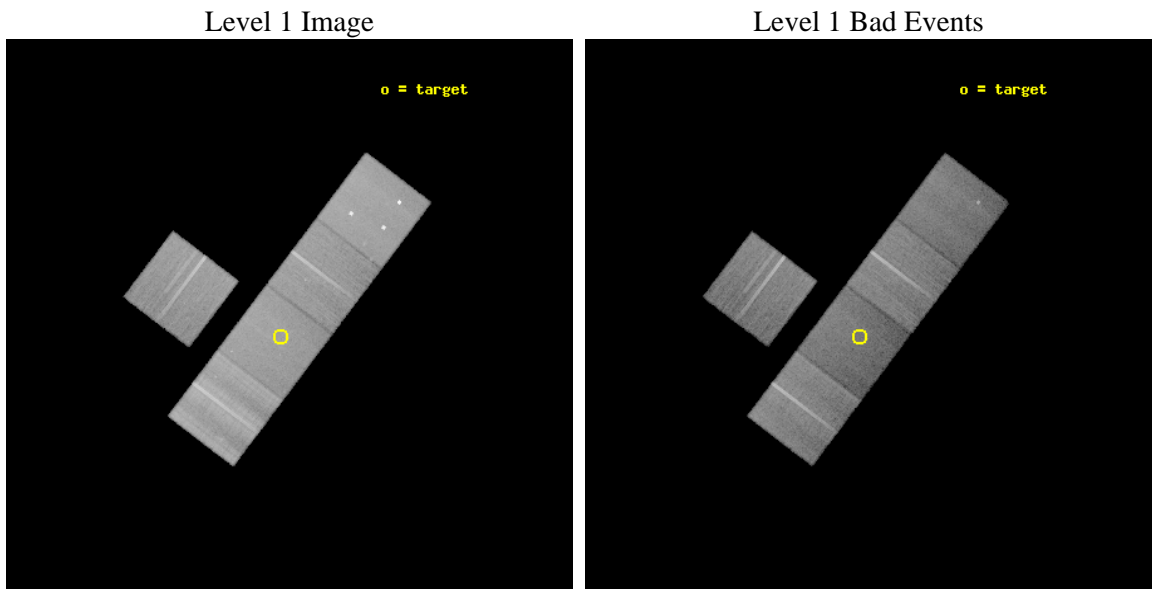
seq_num	800388	Sequence number
obs_id	5353	Observation id
title	Continuation of a Chandra Survey of a Uniformly Selected Sample of High-Redshift Galaxy Clusters	Proposal title
observer	Professor Gordon Garmire	Principal investigator
object	RCS2156.7-0448	Source name
dtcycle	0	
cycle	P	events from which exps? Prim/Second/Both
ra_targ	329.177917	Observer's specified target RA [deg]
dec_targ	-4.801167	Observer's specified target Dec [deg]
ra_nom	329.16172167596	Nominal RA [deg]
dec_nom	-4.7769805977285	Nominal Dec [deg]
roll_nom	127.15527810255	Nominal Roll [deg]
revision	4	Processing version of data
ontime	37041.458061546	Sum of GTIs [s]
livetime	36557.484142447	Livetime [s]
ontime3	37038.193961293	Sum of GTIs [s]
ontime5	37041.417021543	Sum of GTIs [s]
ontime6	37041.375981539	Sum of GTIs [s]
ontime7	37041.458061546	Sum of GTIs [s]
ontime8	37038.152881503	Sum of GTIs [s]
l2events	305947	Number of level 2 events



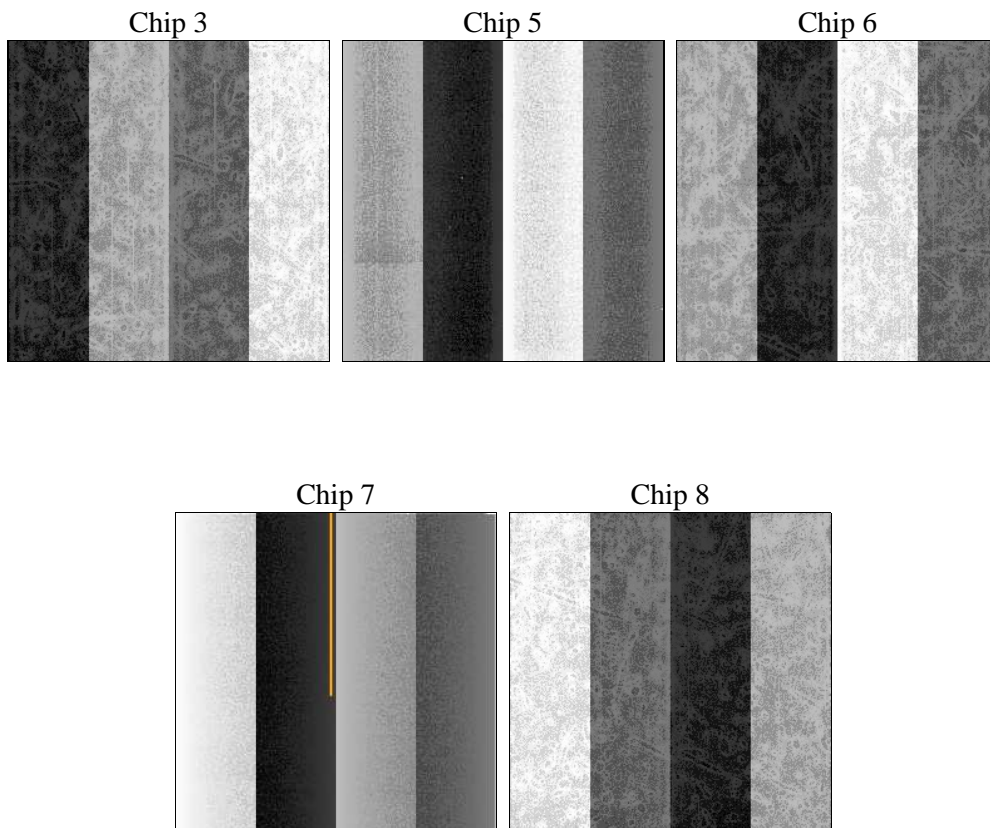
2 OBI

2.1 OBI

2.1.1 Images



2.1.2 Bias



2.1.3 Parameters

obi_num	4	Obi number	sched_exp_time	37000.000000	[s] Scheduled observation exposure time
ascdsver	8.5	Processing system revision	ontime	37041.458061546	Sum of GTIs [s]
caldbver	4.5.4	 	ontime3	37038.193961293	Sum of GTIs [s]
date	2012-12-07T01:59:35	Date and time of file creation	ontime5	37041.417021543	Sum of GTIs [s]
revision	4	Processing version of data	ontime6	37041.375981539	Sum of GTIs [s]
			ontime7	37041.458061546	Sum of GTIs [s]
			ontime8	37038.152881503	Sum of GTIs [s]
			l1events	1337653	Number of level 1 events

2.1.4 Events

	ccd 3	ccd 5	ccd 6	ccd 7	ccd 8
level 1 events	220323	310698	230268	239717	336647
rejected events	199224	149411	206126	130662	222173
rejected %	90%	48%	89%	54%	65%

	ccd 3	ccd 5	ccd 6	ccd 7	ccd 8
grade 0 events	7809	26379	9059	9949	36844
	3%	8%	3%	4%	10%
grade 1 events	128	1112	103	212	328
	0%	0%	0%	0%	0%
grade 2 events	4583	46860	5357	22039	19682
	2%	15%	2%	9%	5%
grade 3 events	2304	7182	2520	10530	16957
	1%	2%	1%	4%	5%
grade 4 events	2296	6881	2488	10542	15295
	1%	2%	1%	4%	4%
grade 5 events	8569	24242	8671	25619	12659
	3%	7%	3%	10%	3%
grade 6 events	4109	73998	4720	56007	25700
	1%	23%	2%	23%	7%
grade 7 events	190525	124044	197350	104819	209182
	86%	39%	85%	43%	62%

2.2 Compared Parameters

Parameter	Planned	Actual	Parameter	Planned	Actual
Instrument	ACIS	ACIS	Obspar format version number	7	7
Detector	ACIS-35678	ACIS-35678	Obspar file type	PREDICTED	ACTUAL
Grating	NONE	NONE	Obspar update status	NONE	UPDATED
Data mode	VFAINT	VFAINT	Number of optional ACIS chips dropped	0	0
Observation mode	POINTING	POINTING	On-chip summing requested	N	N
[deg] Pointing RA	329.187052	329.161721675965	Subarray requested	NONE	NONE
[deg] Pointing Dec	-4.787218	-4.776980597728476	Alternating exposures requested	N	N
[deg] Pointing Roll	127.000762	127.1552781025453	[s] Primary exposure time	0.000000	3.1
[mm] SIM focus pos	-0.684267	-0.6828225247311905			
[mm] SIM defocus	0	0.001444936568705701			
[mm] SIM translation stage pos	-190.132523	-190.1400660498719			
[mm] SIM translation stage offset	0	0.00754346686406393			
[s] Observation start time (MET)	207776087.184000	207774976.62345			
Observation start date	2004-08-01T19:33:43	2004-08-01T19:16:16			
[s] Observation end time (MET)	207813087.184000	207858308.61465			
Observation end date	2004-08-02T05:50:23	2004-08-02T18:25:08			
Read mode	TIMED	TIMED			

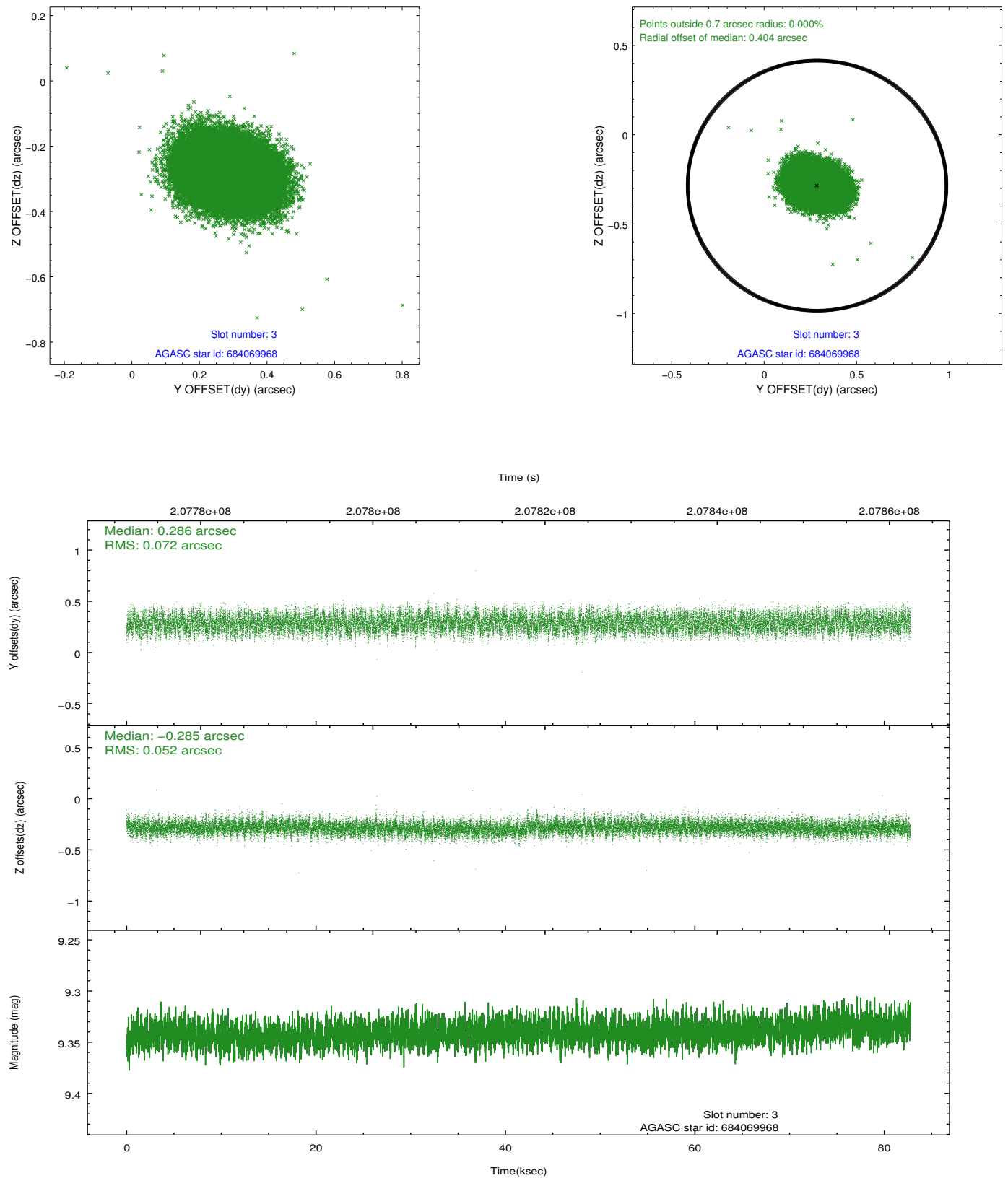
2.3 Aspect

Slot Statistics

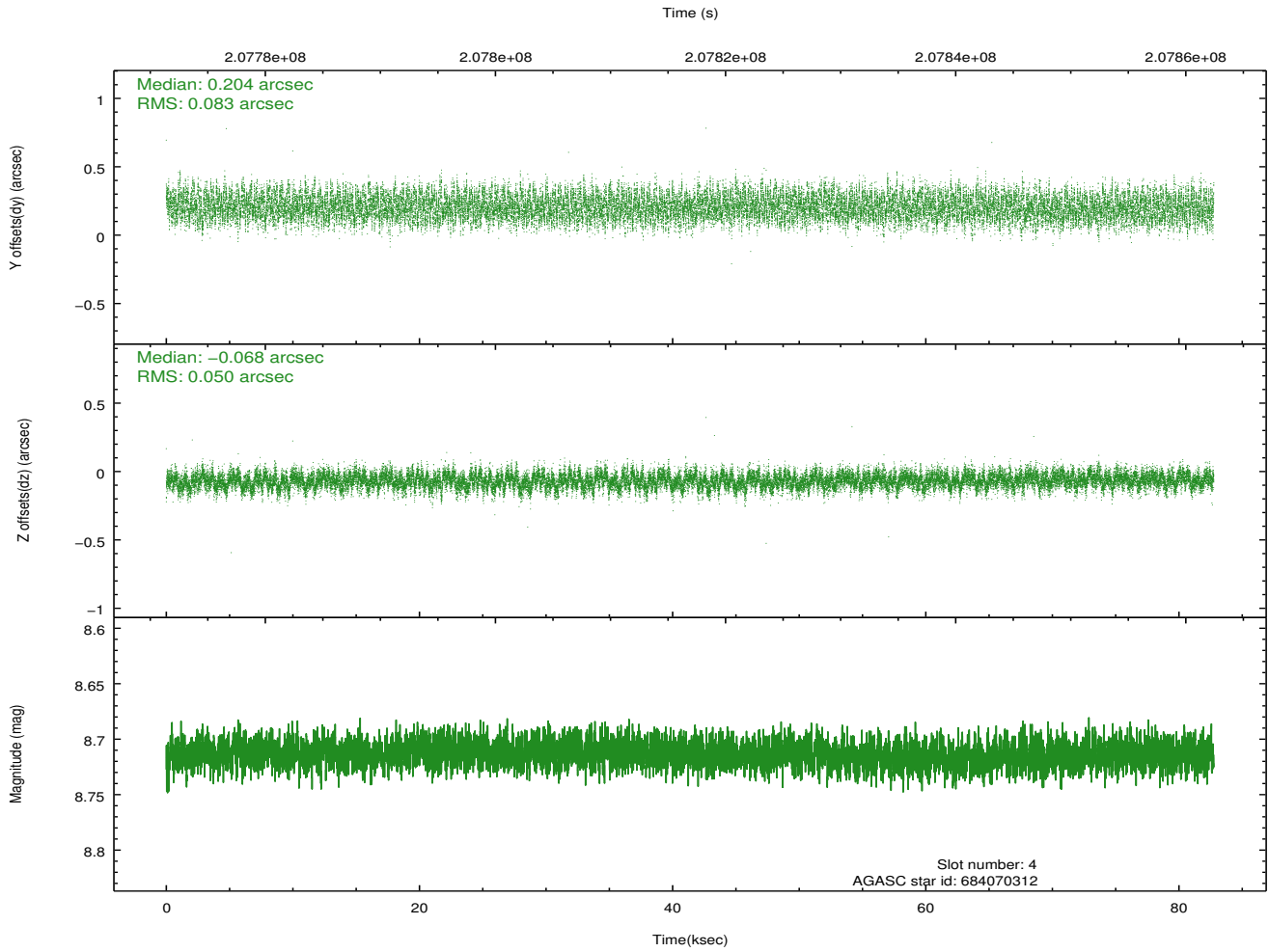
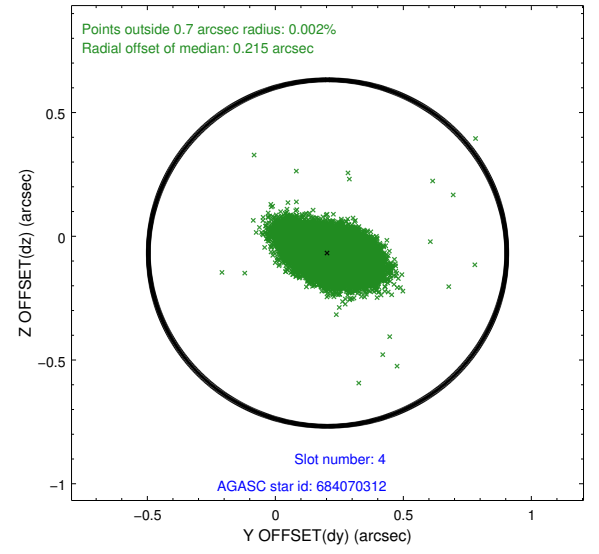
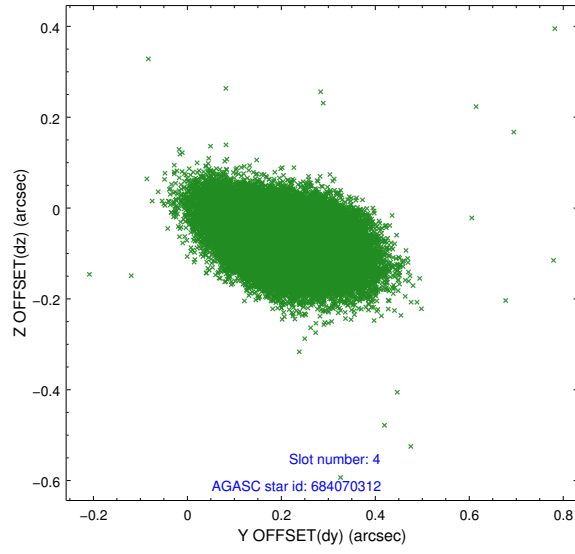
slot	status	id	mag	n_pts	med_dy	med_dz	dr1	dr2	ra	dec	mean_y	mean_z
0	FID	ACIS-S-2	7.10	20181	-0.069	-0.042	0.009	0.018	0.000000	0.000000	-759.28	-1730.01
1	FID	ACIS-S-4	7.20	20183	0.056	0.042	0.015	0.021	0.000000	0.000000	2154.16	178.62
2	FID	ACIS-S-6	7.35	20183	-0.013	0.007	0.018	0.025	0.000000	0.000000	402.67	815.91
3	GUIDE	684069968	9.34	40343	0.286	-0.285	0.095	0.152	329.097555	-5.451643	-1716.93	1695.68
4	GUIDE	684070312	8.71	40351	0.204	-0.068	0.102	0.171	329.324094	-3.892917	2275.38	-2330.23
5	GUIDE	684071968	8.45	40357	-0.179	0.147	0.064	0.103	328.900116	-4.224267	2238.48	-396.16
6	GUIDE	684072808	8.97	40345	-0.436	0.242	0.070	0.112	329.745506	-5.111641	-2138.62	-895.43
7	GUIDE	684072952	8.58	40359	0.120	-0.032	0.085	0.132	329.874004	-4.607653	-967.83	-2356.84

2.4 Star Slots

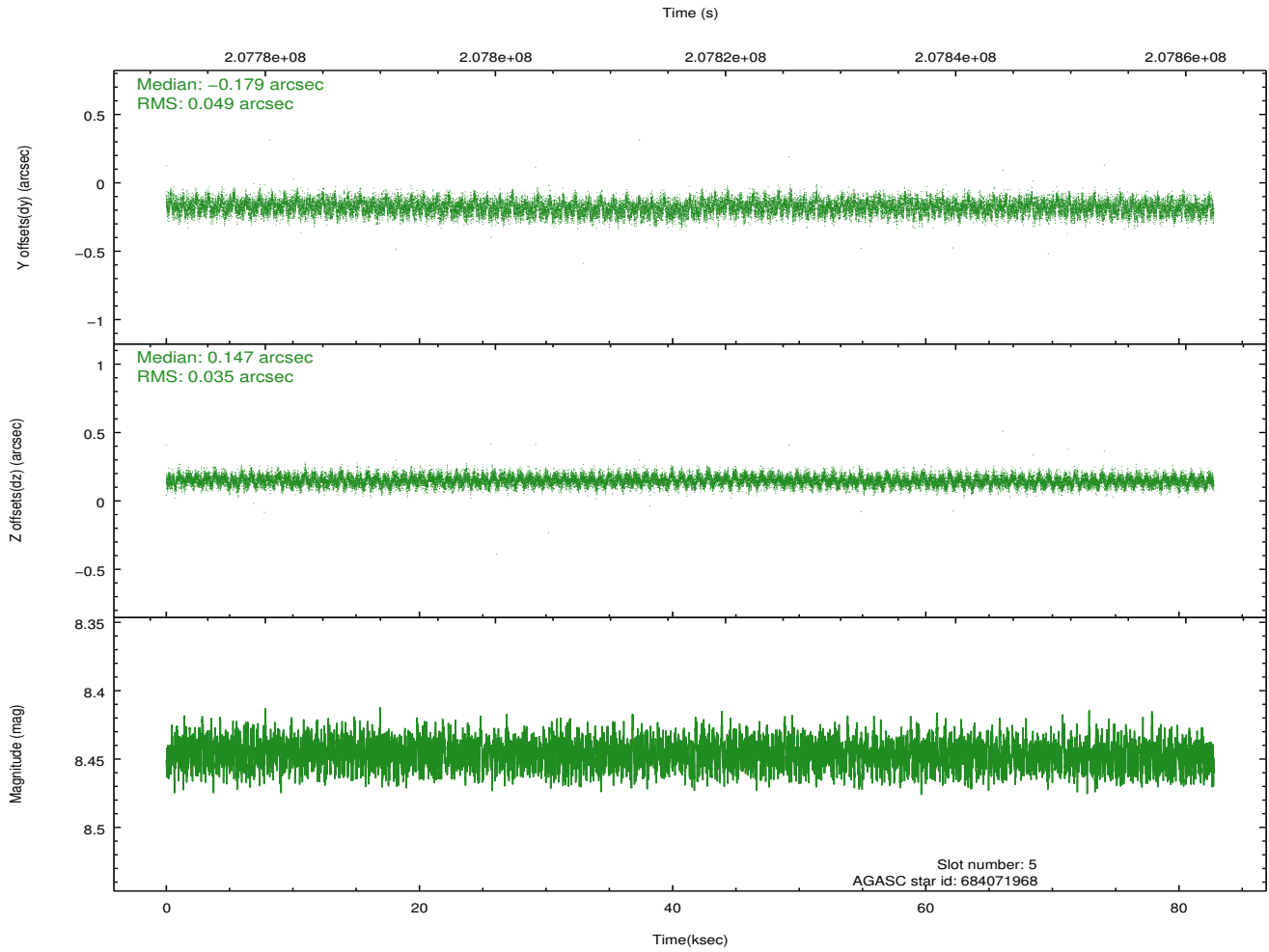
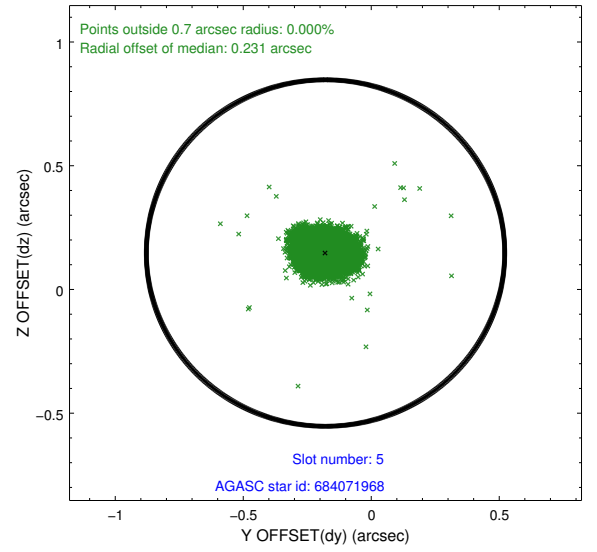
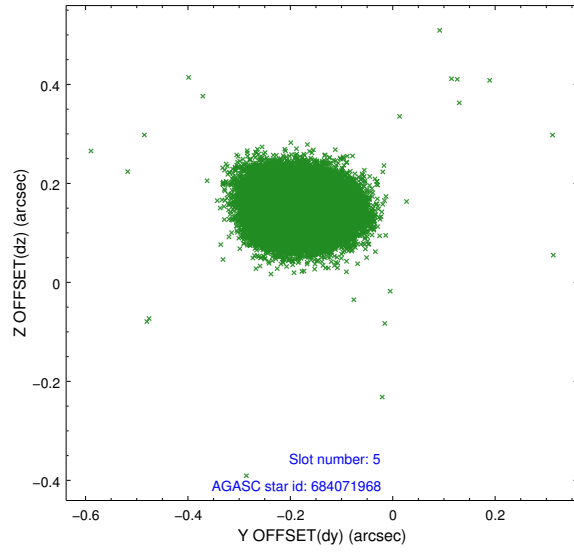
2.4.1 Slot 3



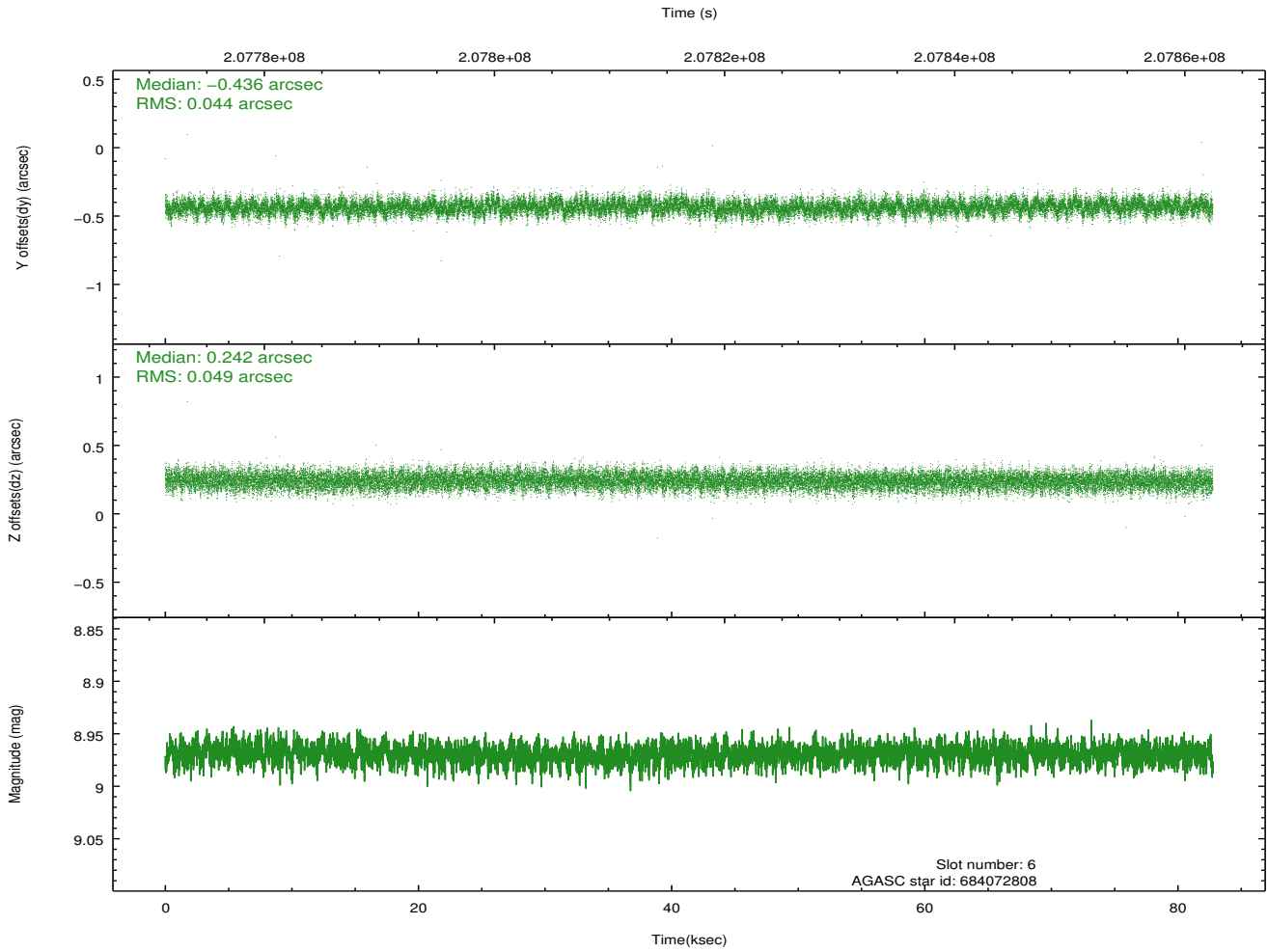
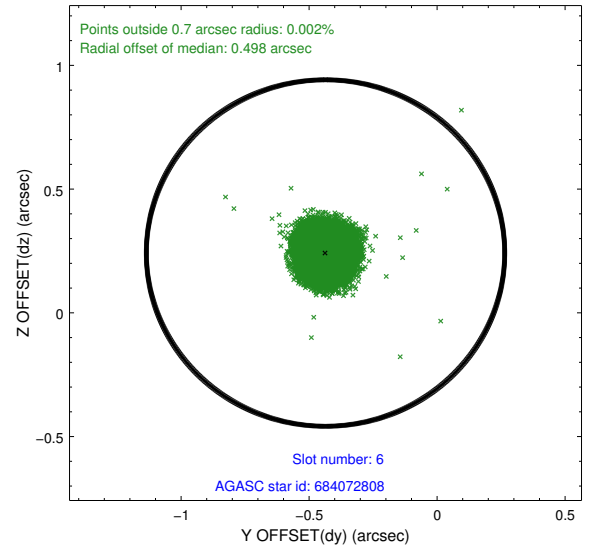
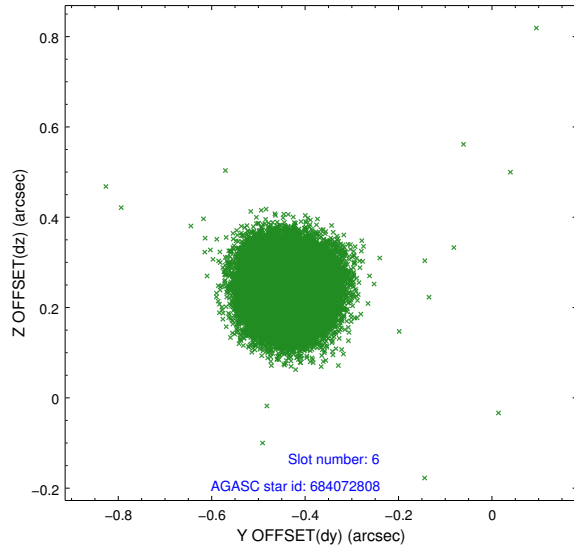
2.4.2 Slot 4



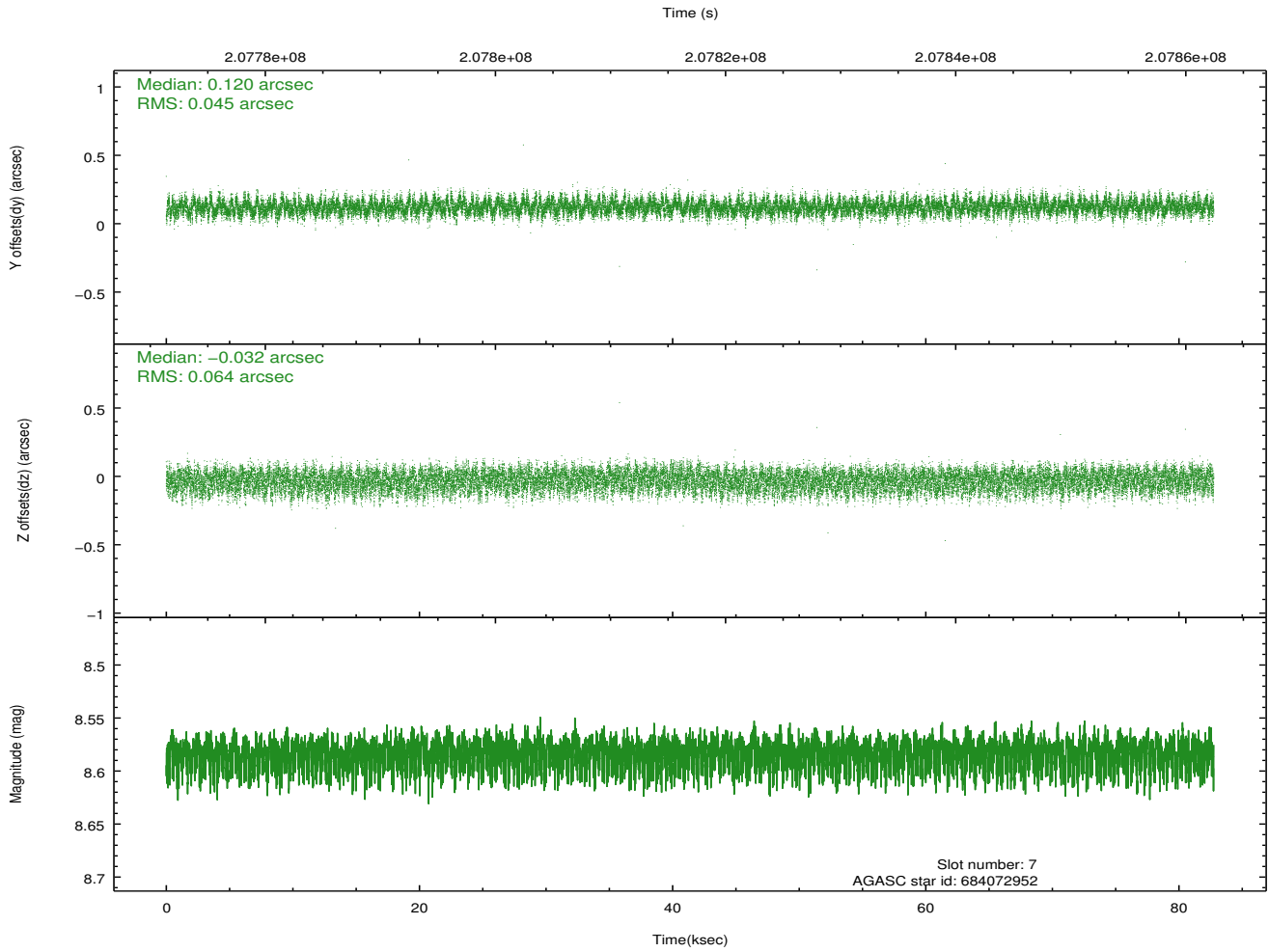
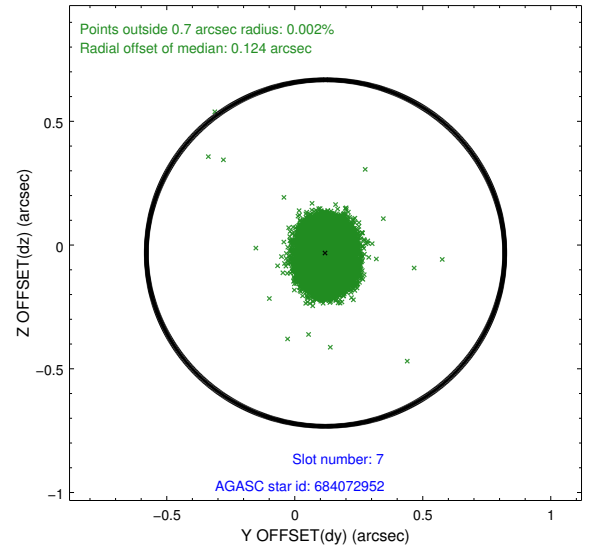
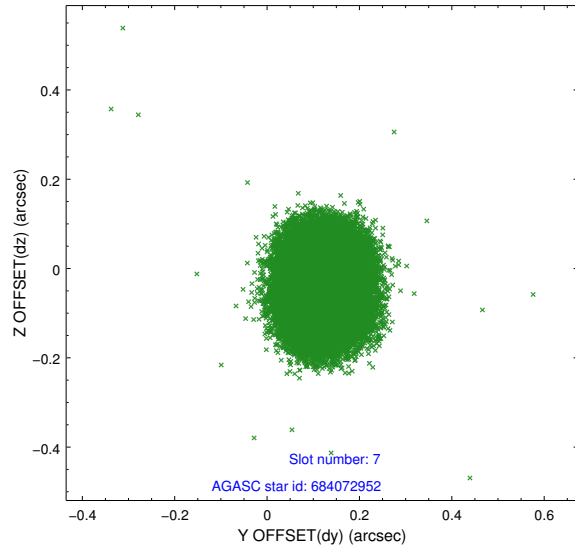
2.4.3 Slot 5



2.4.4 Slot 6

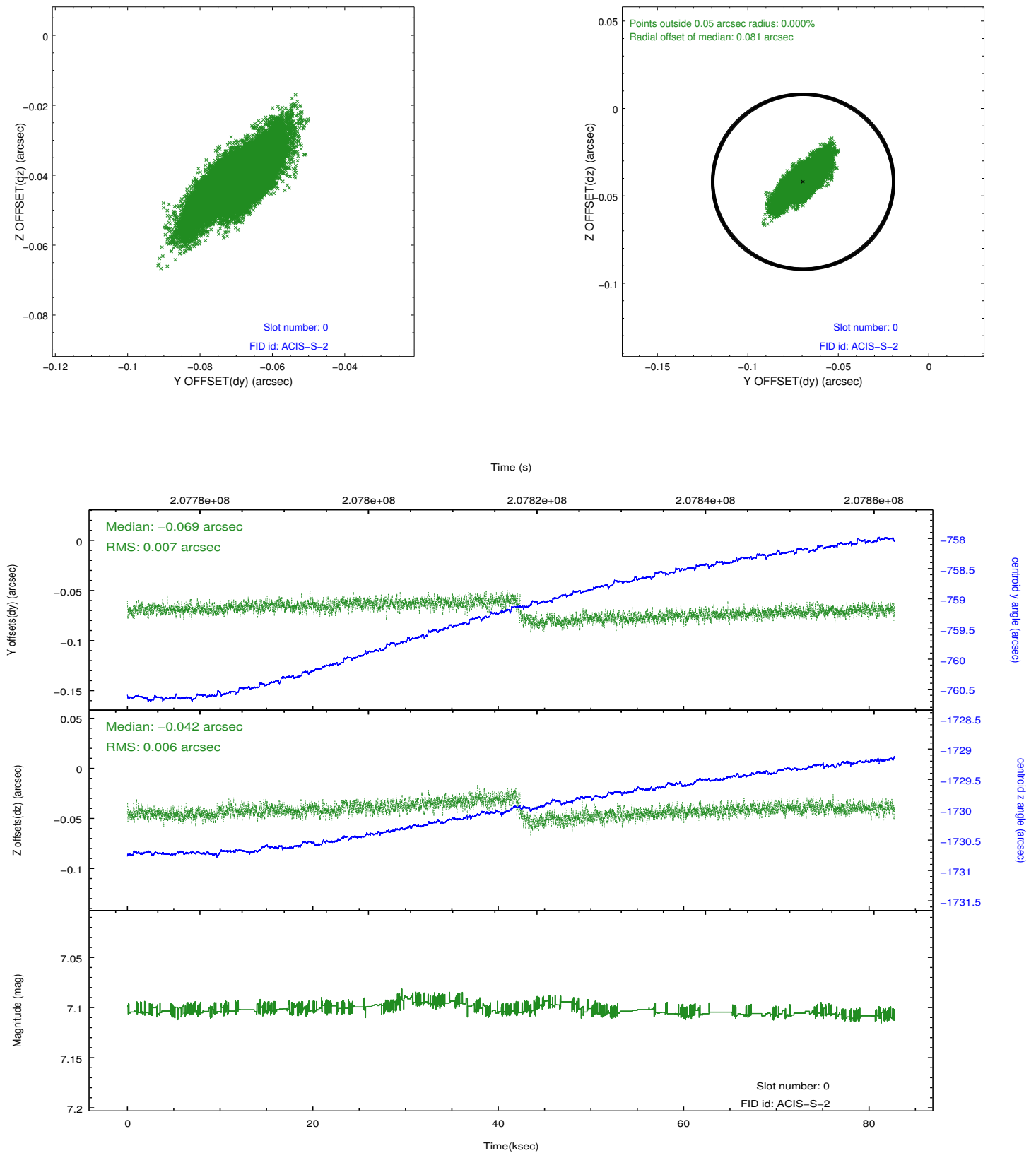


2.4.5 Slot 7

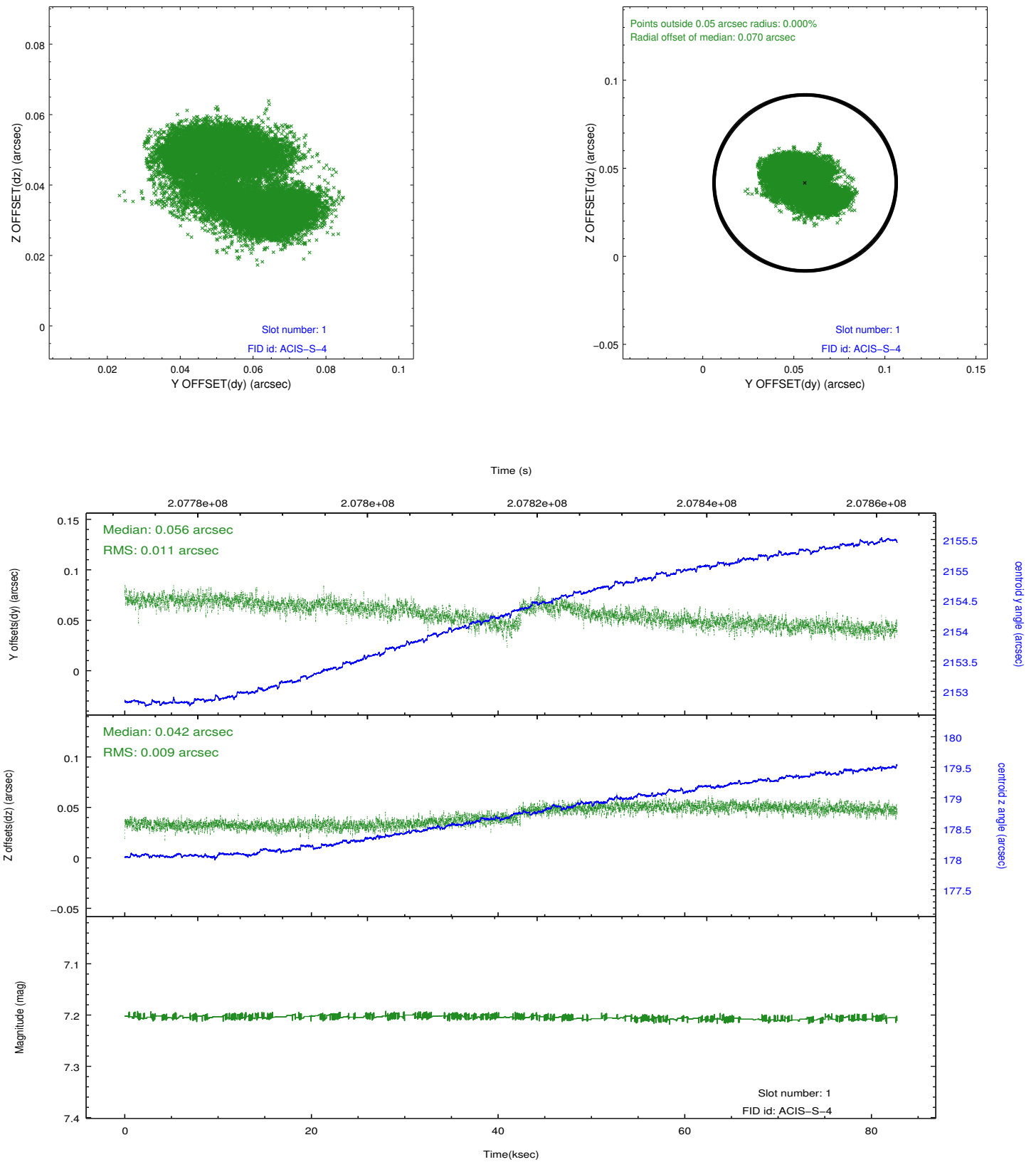


2.5 FID Slots

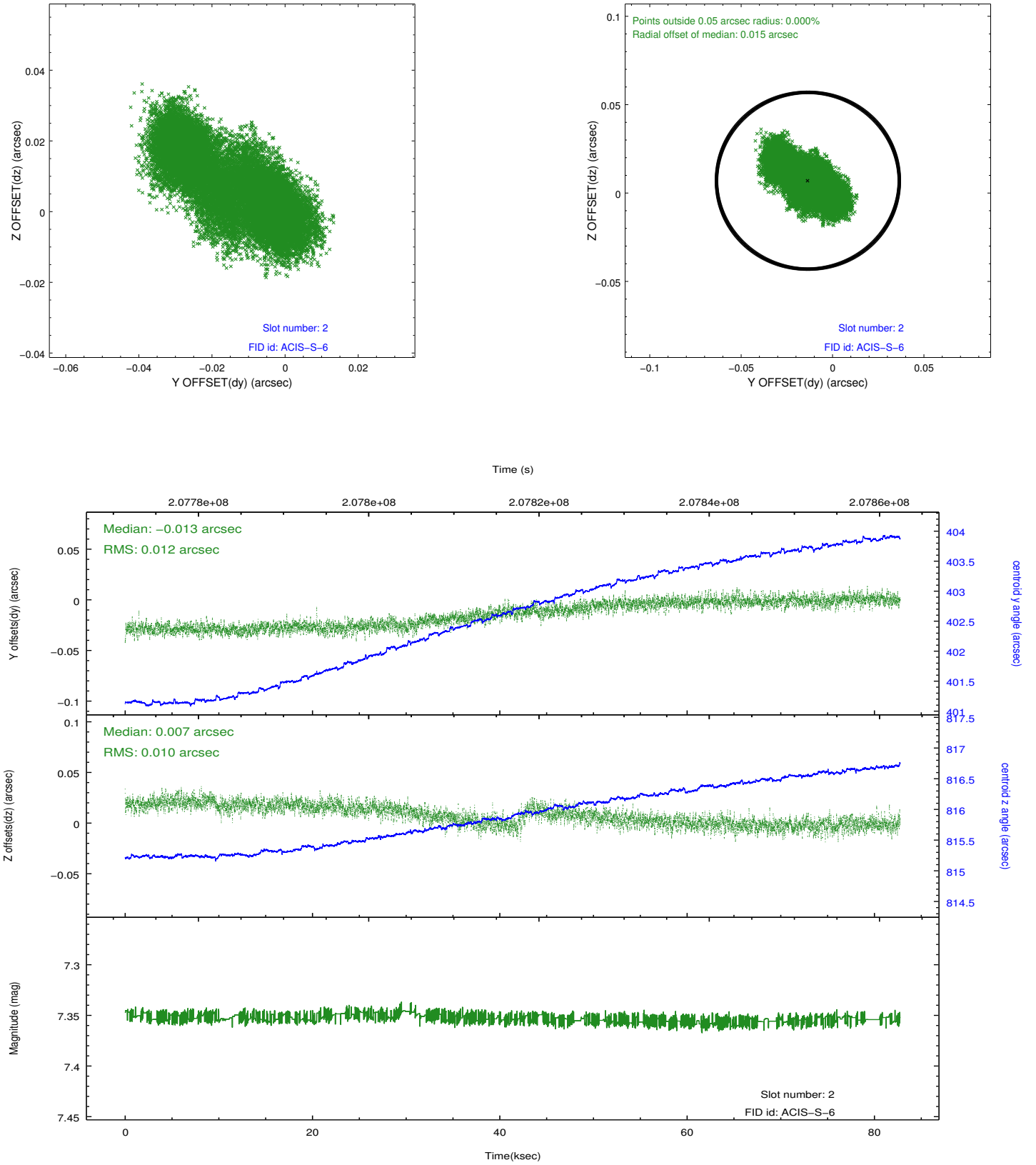
2.5.1 Slot 0



2.5.2 Slot 1



2.5.3 Slot 2



A Summary

A.1 Status

V&V Scientist	Jen Lauer
V&V Date (YYYY-MM-DD)	2012.12.21
V&V Edition	1
V&V Disposition and Status	OK
V&V Charge Time	37.041

A.2 Comments

There was a manual trip of SCS 107 at 2004:215:18:21, the very end of this observation. It appears that all the data was received.