

# V&V Reference Report

## L2 ASCDS Version : 8.4.5

Observation 4999 - L2 Version 3  
Chandra X-Ray Center

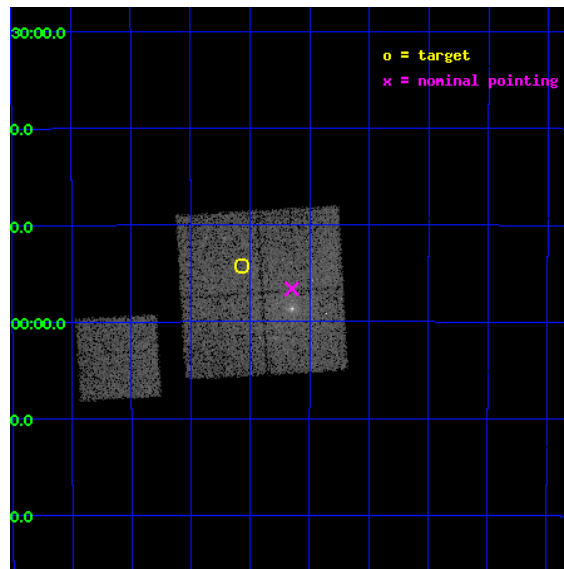
L2 Processing Date : Dec 3 2012

## Contents

<b>1</b>	<b>Front</b>	<b>2</b>
<b>2</b>	<b>OBI</b>	<b>3</b>
2.1	OBI . . . . .	3
2.1.1	Images . . . . .	3
2.1.2	Bias . . . . .	3
2.1.3	Parameters . . . . .	4
2.1.4	Events . . . . .	4
2.2	Compared Parameters . . . . .	5
2.3	Aspect . . . . .	6
2.4	Star Slots . . . . .	9
2.4.1	Slot 3 . . . . .	9
2.4.2	Slot 4 . . . . .	10
2.4.3	Slot 5 . . . . .	11
2.4.4	Slot 6 . . . . .	12
2.4.5	Slot 7 . . . . .	13
2.5	FID Slots . . . . .	14
2.5.1	Slot 0 . . . . .	14
2.5.2	Slot 1 . . . . .	15
2.5.3	Slot 2 . . . . .	16
<b>A</b>	<b>Summary</b>	<b>17</b>
A.1	Status . . . . .	17
A.2	Comments . . . . .	17

# 1 Front

seq_num	800442	Sequence number
obs_id	4999	Observation id
title	Study of Candidate Fossil Groups	Proposal title
observer	Dr. Stephen Murray	Principal investigator
object	NGC5419-offset1	Source name
dtcycle	0	&#160
cycle	P	events from which exps? Prim/Second/Both
ra_targ	211.017917	Observer's specified target RA [deg]
dec_targ	-33.902944	Observer's specified target Dec [deg]
ra_nom	210.91209747827	Nominal RA [deg]
dec_nom	-33.943445621174	Nominal Dec [deg]
roll_nom	266.57913713635	Nominal Roll [deg]
revision	3	Processing version of data
ontime	14765.259001344	Sum of GTIs [s]
livetime	14572.340022466	Livetime [s]
ontime0	14765.259001344	Sum of GTIs [s]
ontime1	14768.399971575	Sum of GTIs [s]
ontime2	14758.977030903	Sum of GTIs [s]
ontime3	14765.259001344	Sum of GTIs [s]
ontime6	14765.258971423	Sum of GTIs [s]
l2events	53244	Number of level 2 events

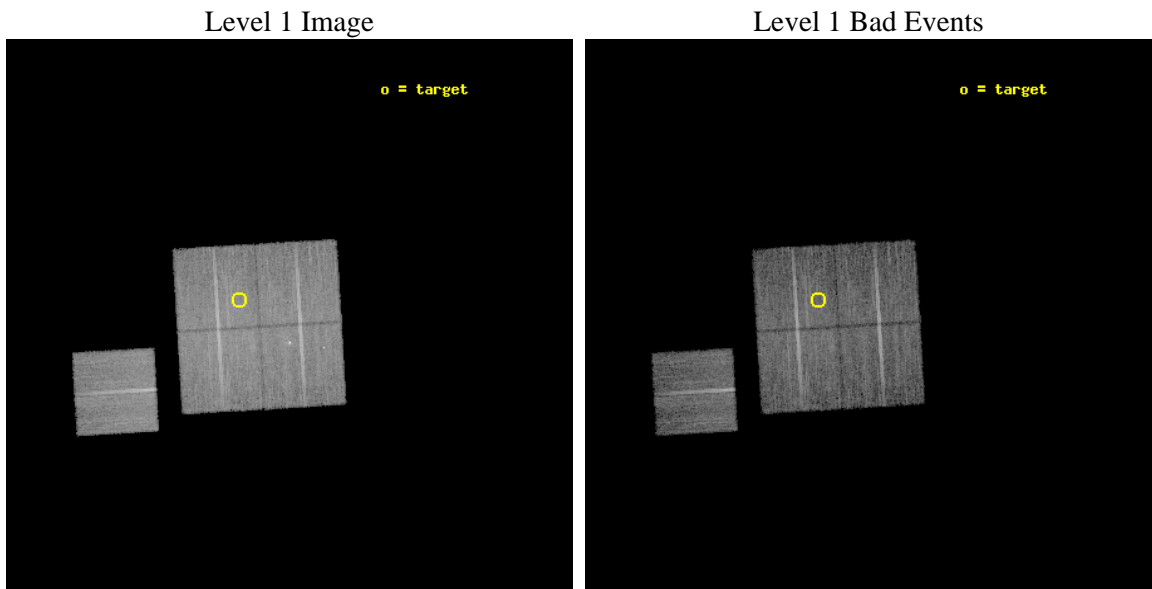




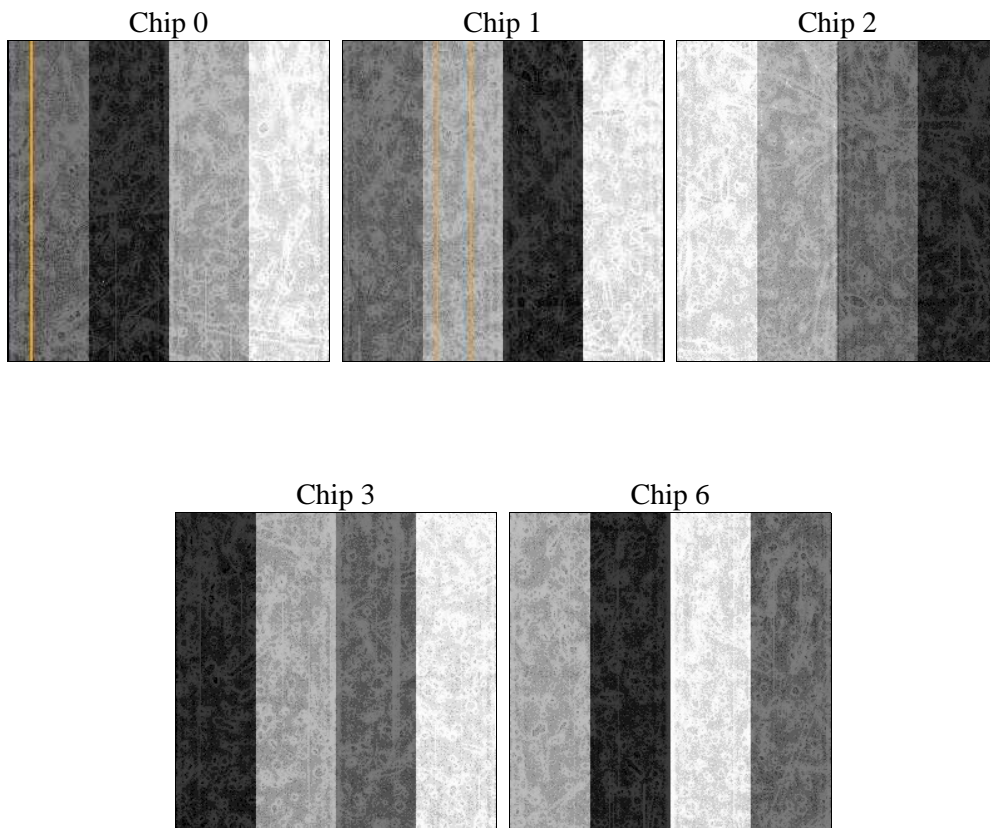
## 2 OBI

### 2.1 OBI

#### 2.1.1 Images



#### 2.1.2 Bias



### 2.1.3 Parameters

obi_num	0	Obi number	sched_exp_time	15000.000000	[s] Scheduled observation exposure time
ascdsver	8.4.5	Processing system revision	ontime	14765.259001344	Sum of GTIs [s]
caldsver	4.5.2	&#160	ontime0	14765.259001344	Sum of GTIs [s]
date	2012-12-03T05:06:23	Date and time of file creation	ontime1	14768.399971575	Sum of GTIs [s]
revision	3	Processing version of data	ontime2	14758.977030903	Sum of GTIs [s]
			ontime3	14765.259001344	Sum of GTIs [s]
			ontime6	14765.258971423	Sum of GTIs [s]
			l1events	464897	Number of level 1 events

### 2.1.4 Events

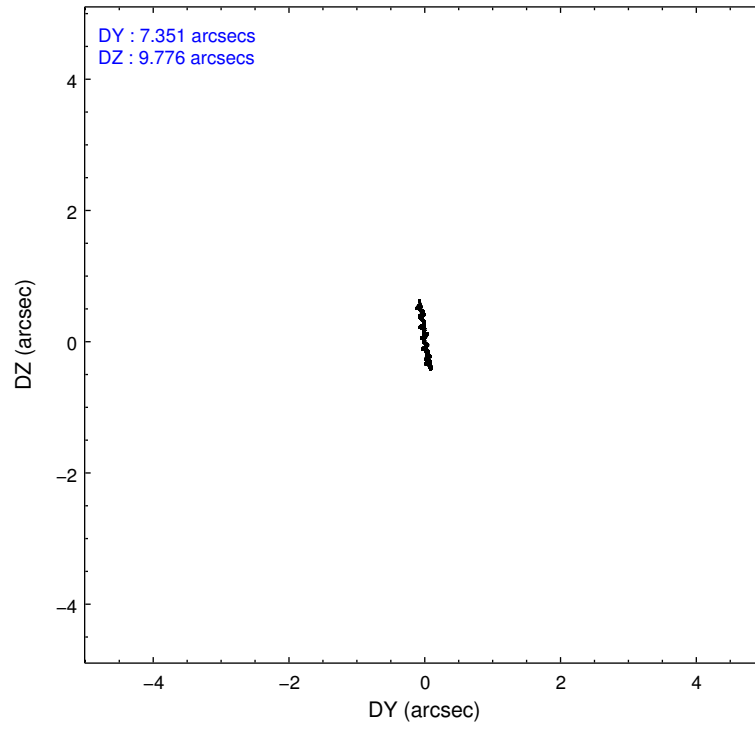
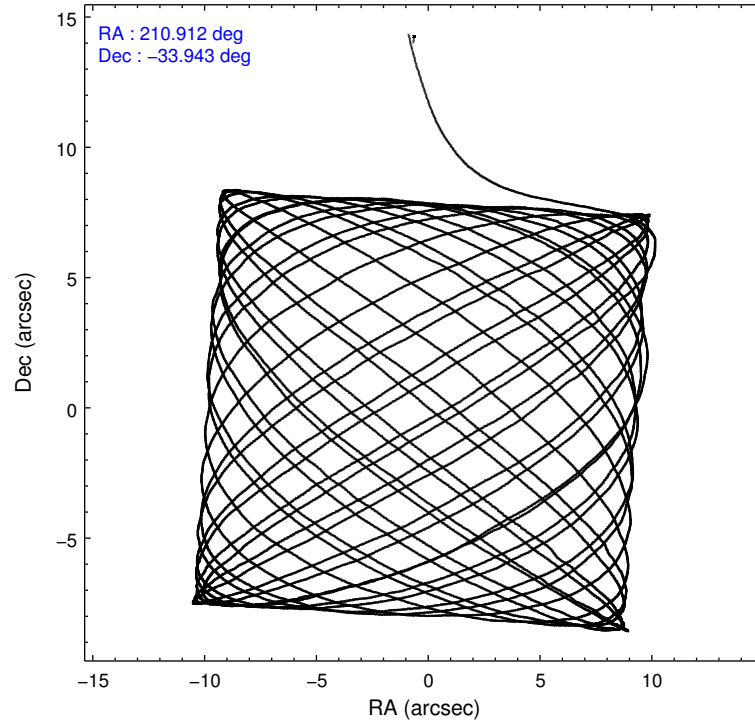
	ccd 0	ccd 1	ccd 2	ccd 3	ccd 6
level 1 events	92649	88673	100333	92101	91141
rejected events	75802	75510	89009	81349	81255
rejected %	81%	85%	88%	88%	89%

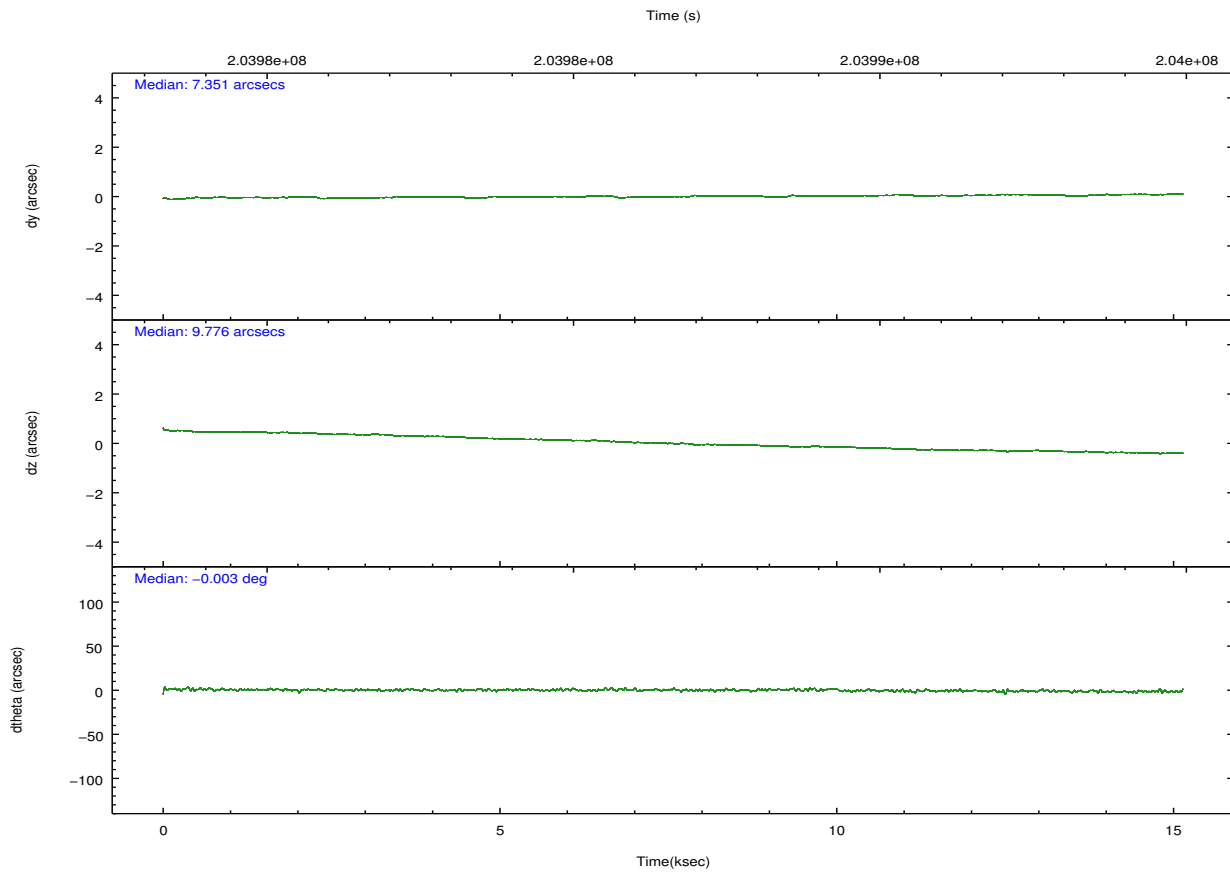
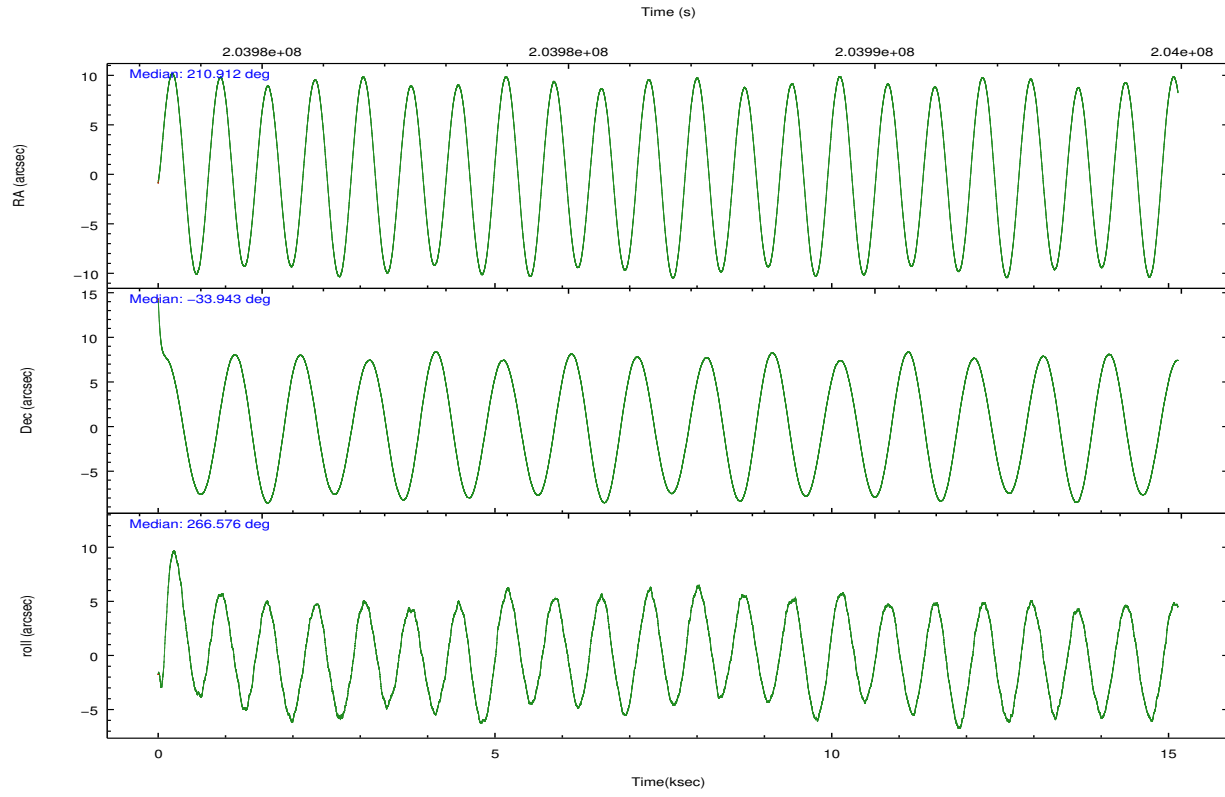
	ccd 0	ccd 1	ccd 2	ccd 3	ccd 6
grade 0 events	9716	6259	5245	4938	3831
	10%	7%	5%	5%	4%
grade 1 events	85	56	57	54	36
	0%	0%	0%	0%	0%
grade 2 events	2880	2429	2348	2035	1954
	3%	2%	2%	2%	2%
grade 3 events	1249	1207	1098	1020	1084
	1%	1%	1%	1%	1%
grade 4 events	1172	1181	1043	1042	1082
	1%	1%	1%	1%	1%
grade 5 events	3200	3405	3008	3473	3460
	3%	3%	2%	3%	3%
grade 6 events	1842	2093	1594	1722	1941
	1%	2%	1%	1%	2%
grade 7 events	72505	72043	85940	77817	77753
	78%	81%	85%	84%	85%

## 2.2 Compared Parameters

Parameter	Planned	Actual	Parameter	Planned	Actual
Instrument	ACIS	ACIS	Obspar format version number	7	7
Detector	ACIS-01236	ACIS-01236	Obspar file type	PREDICTED	ACTUAL
Grating	NONE	NONE	Obspar update status	NONE	UPDATED
Data mode	VFAINT	VFAINT	Number of optional ACIS chips dropped	0	0
Observation mode	POINTING	POINTING	On-chip summing requested	N	N
[deg] Pointing RA	210.897173	210.9120974782651	Subarray requested	NONE	NONE
[deg] Pointing Dec	-33.919007	-33.94344562117354	Alternating exposures requested	N	N
[deg] Pointing Roll	266.362118	266.5791371363523	[s] Primary exposure time	0.000000	3.1
[mm] SIM focus pos	-0.782348	-0.7809083437167272			
[mm] SIM defocus	0	0.001439871863259334			
[mm] SIM translation stage pos	-244.592463	-244.5900782204552			
[mm] SIM translation stage offset	11	10.99762521752555			
[s] Observation start time (MET)	203979196.184000	203978171.96748			
Observation start date	2004-06-18T20:52:12	2004-06-18T20:36:11			
[s] Observation end time (MET)	203994196.184000	203994330.06819			
Observation end date	2004-06-19T01:02:12	2004-06-19T01:05:30			
Read mode	TIMED	TIMED			

## 2.3 Aspect



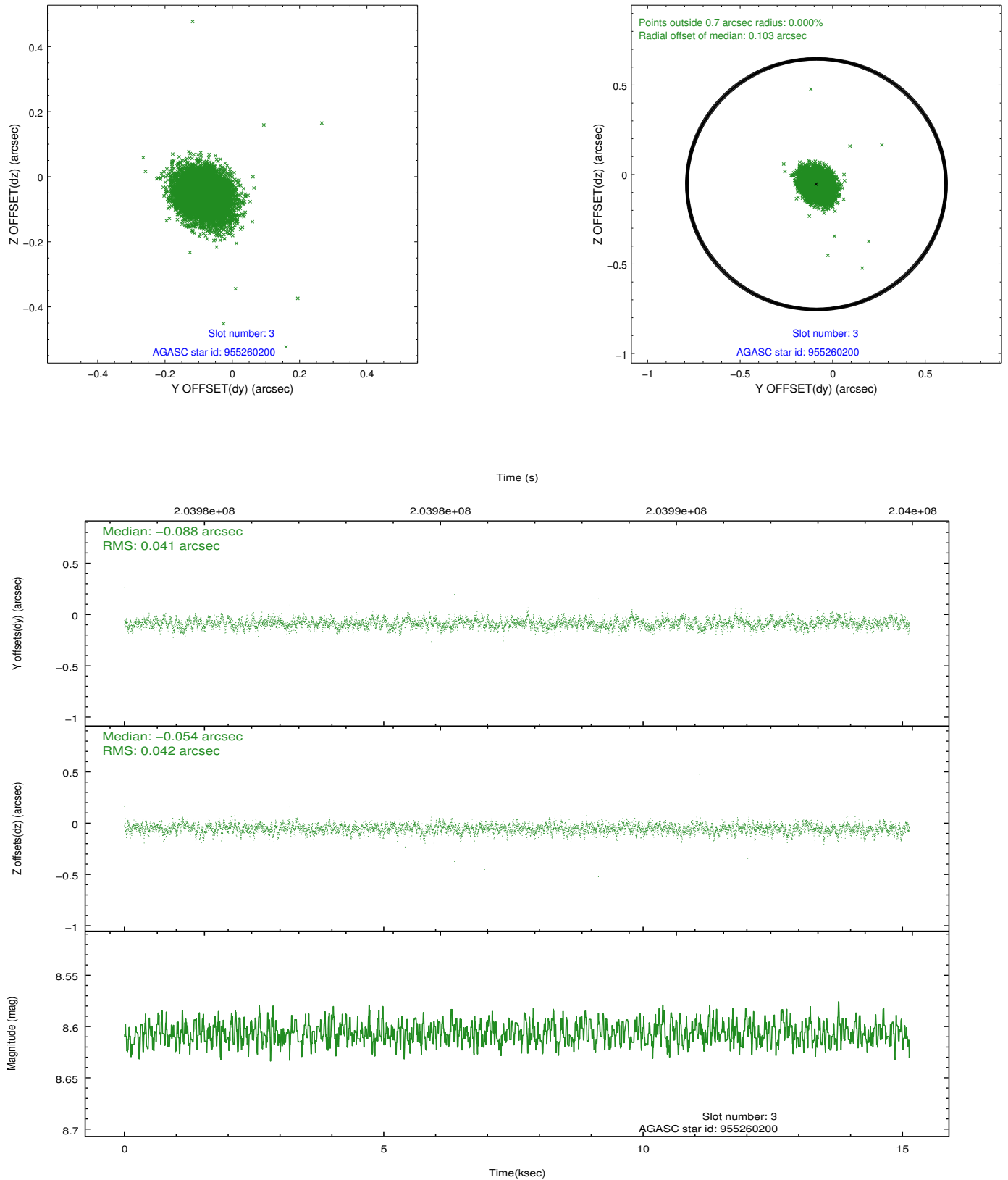


### Slot Statistics

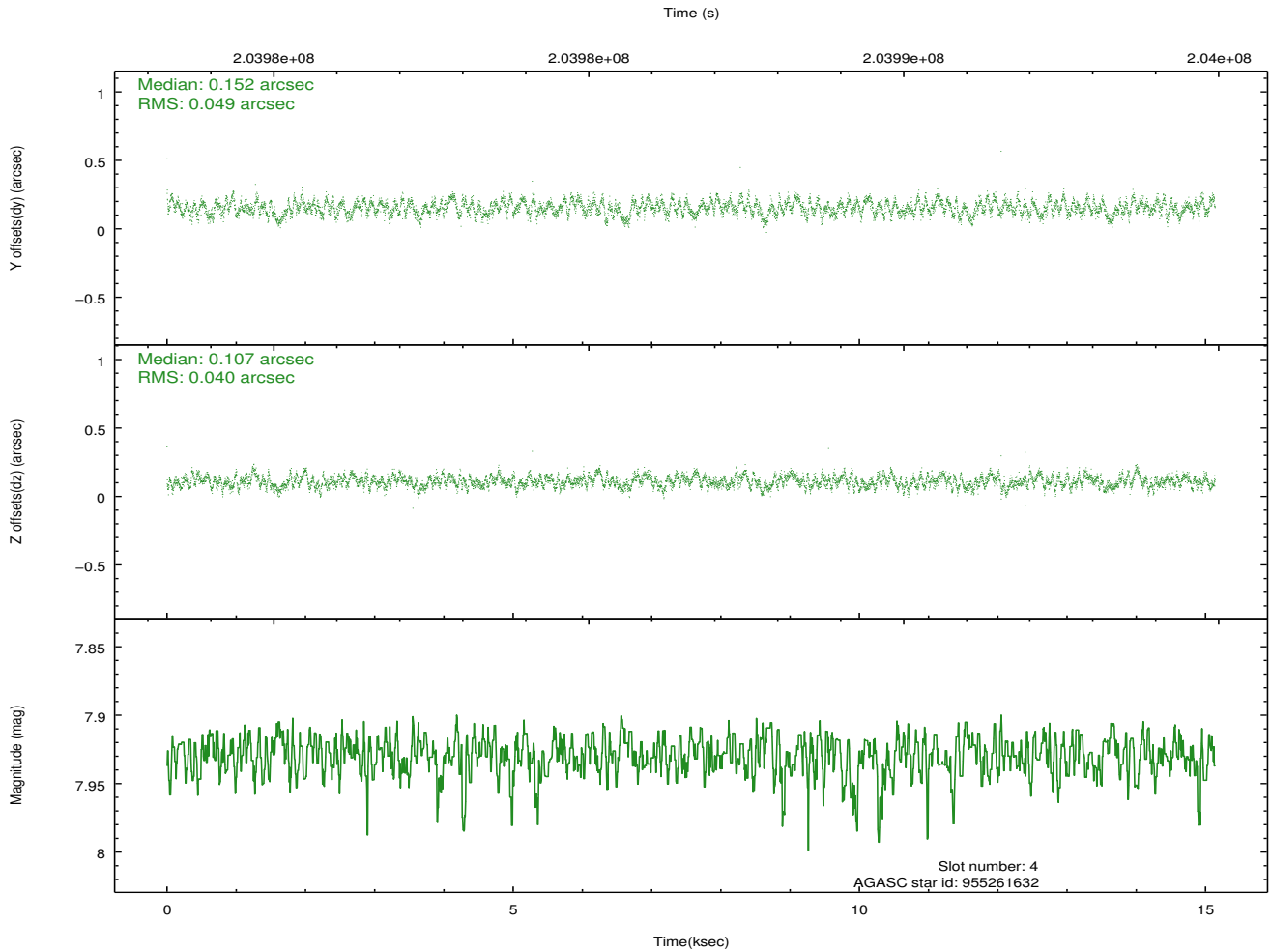
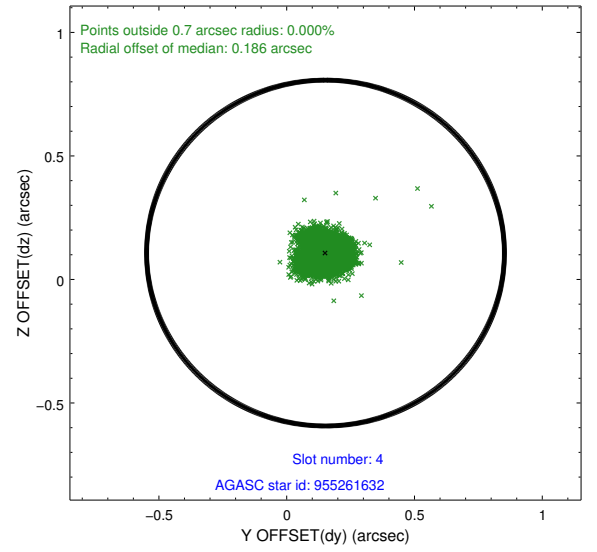
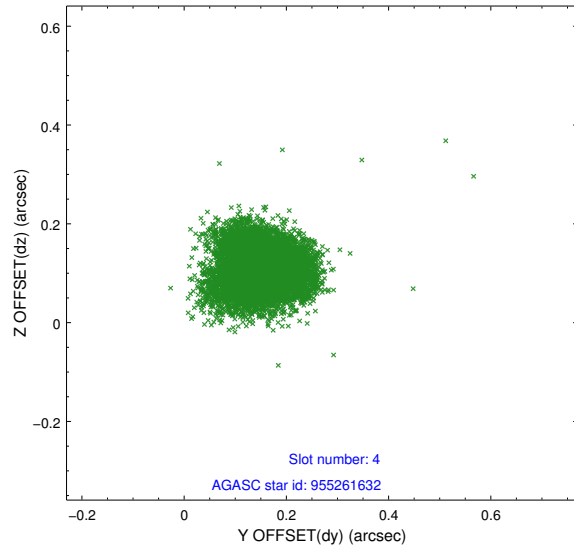
slot	status	id	mag	n_pts	med_dy	med_dz	dr1	dr2	ra	dec	mean_y	mean_z
0	FID	ACIS-I-1	7.30	3693	-0.230	0.099	0.015	0.024	0.000000	0.000000	932.30	-607.13
1	FID	ACIS-I-2	7.21	3692	0.040	-0.092	0.010	0.016	0.000000	0.000000	-760.77	-615.35
2	FID	ACIS-I-4	7.23	3693	0.090	0.059	0.015	0.024	0.000000	0.000000	2152.96	1291.18
3	GUIDE	955260200	8.61	7383	-0.088	-0.054	0.061	0.100	210.218841	-34.127979	886.09	-1969.11
4	GUIDE	955261632	7.93	7385	0.152	0.107	0.068	0.107	210.777259	-34.540798	2257.34	-212.55
5	GUIDE	955263032	8.67	7382	0.074	-0.101	0.059	0.094	211.177099	-34.436586	1808.50	947.94
6	GUIDE	954862944	9.19	7383	-0.070	0.114	0.093	0.148	211.627478	-33.349687	-2176.04	2061.31
7	GUIDE	954861224	8.93	7383	-0.068	-0.068	0.084	0.133	211.716360	-33.398119	-2018.24	2339.10

## 2.4 Star Slots

### 2.4.1 Slot 3

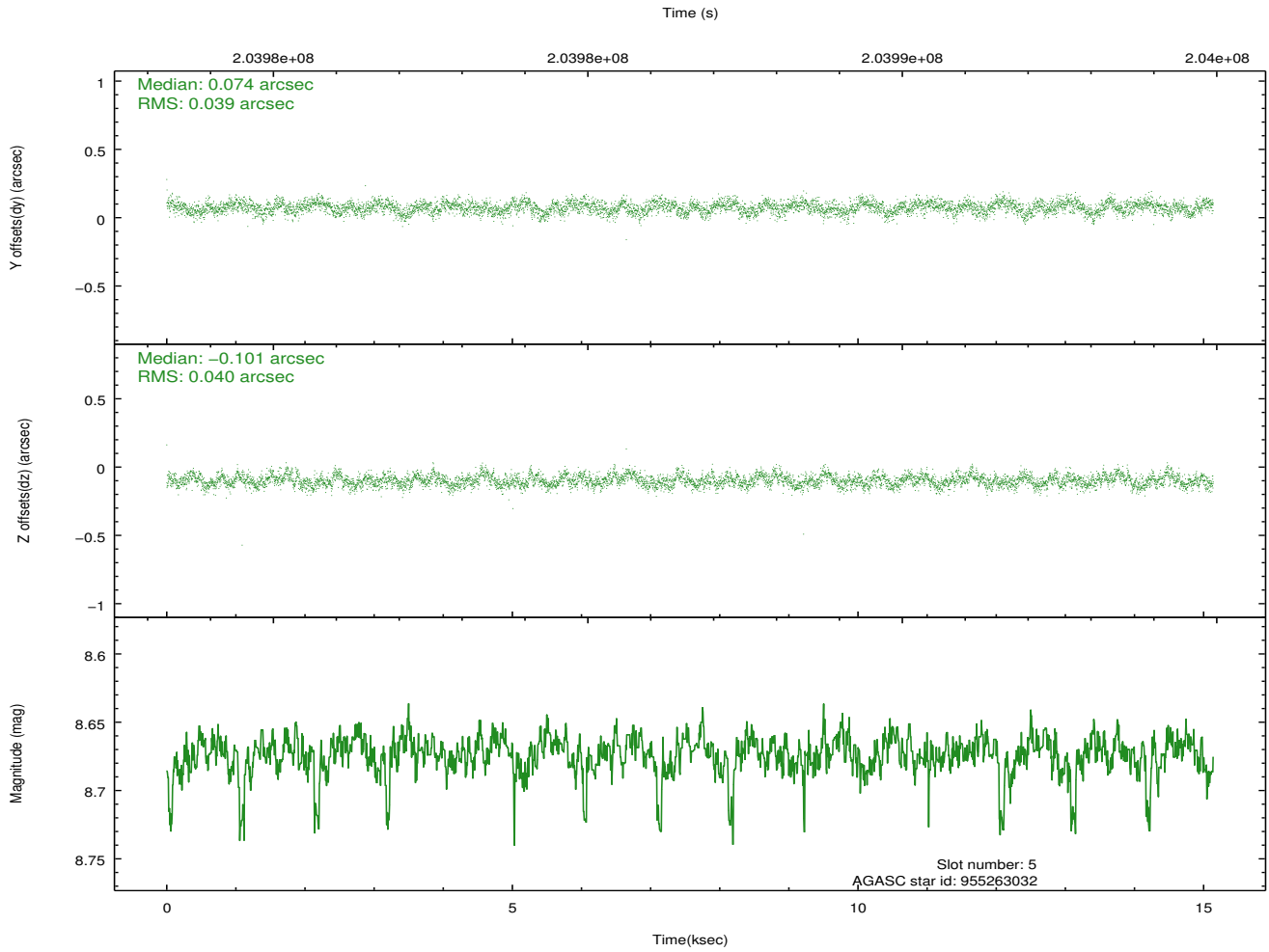
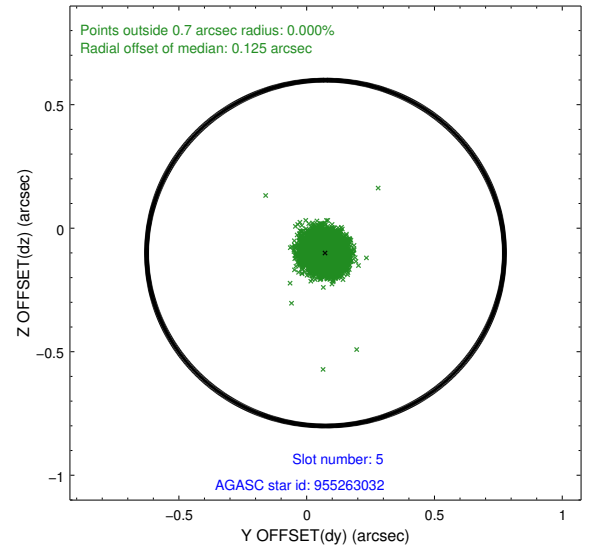
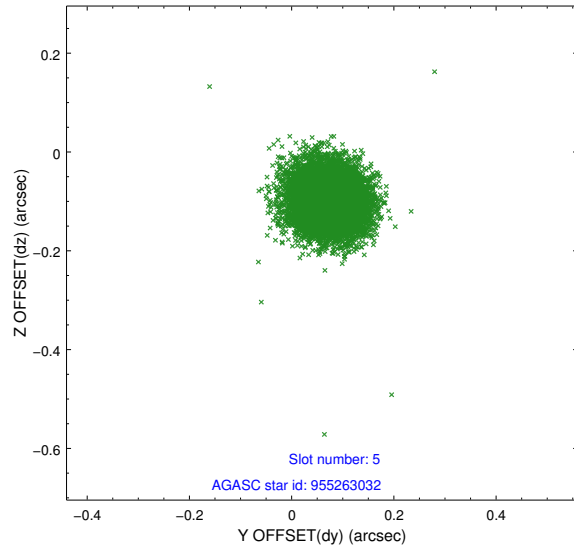


## 2.4.2 Slot 4

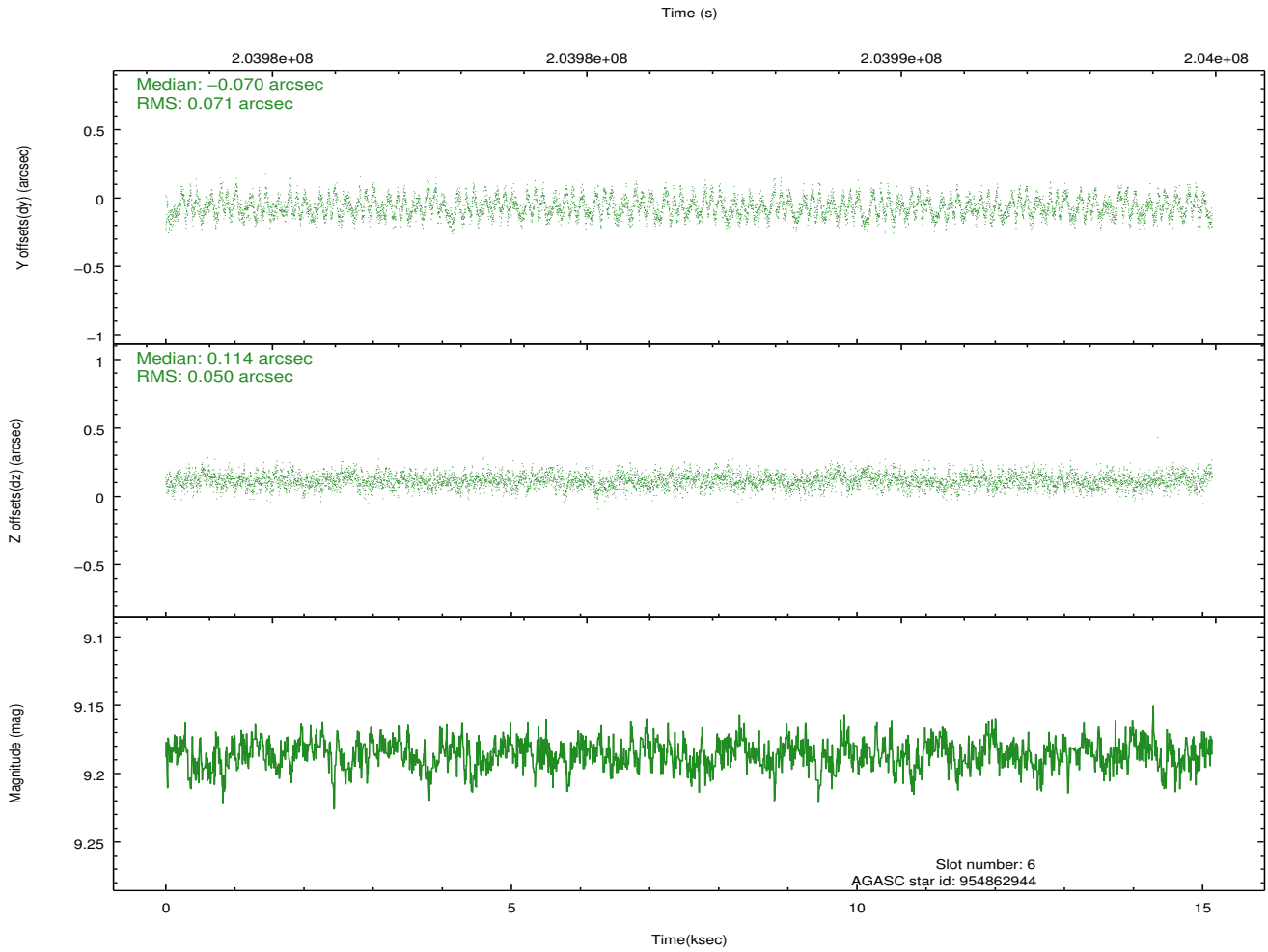
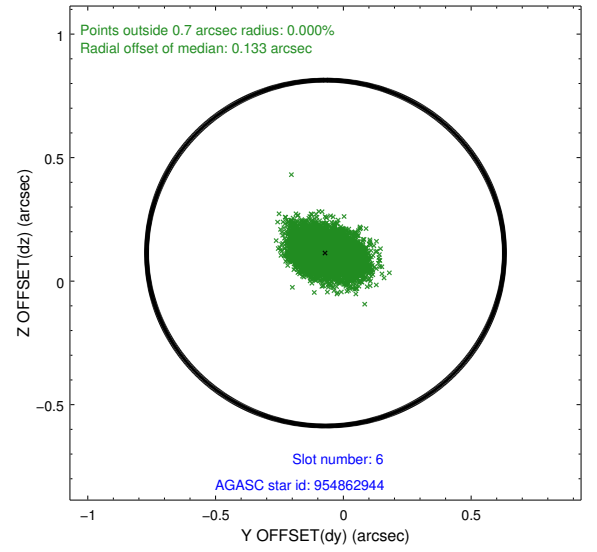
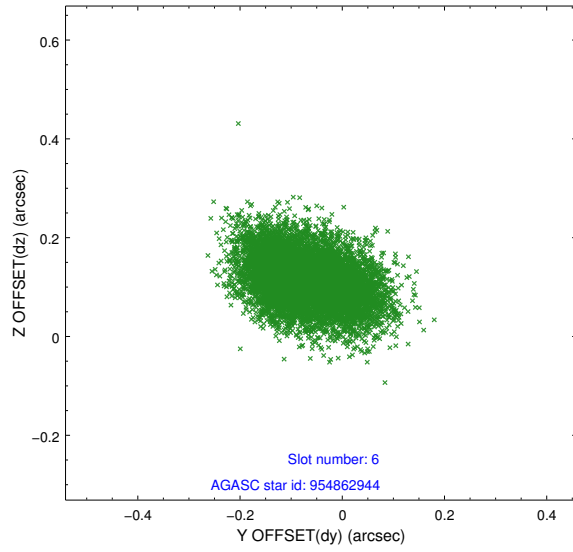




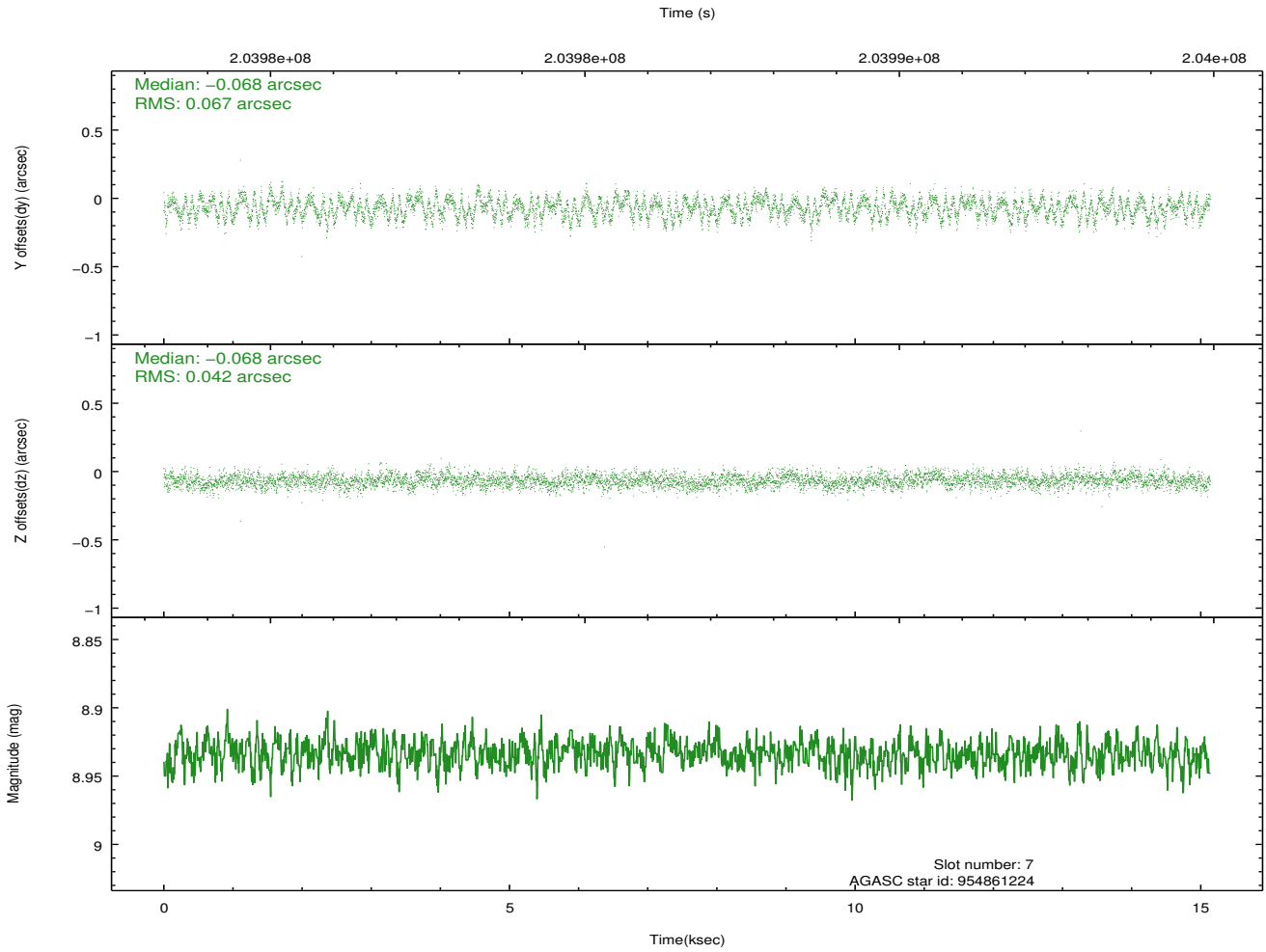
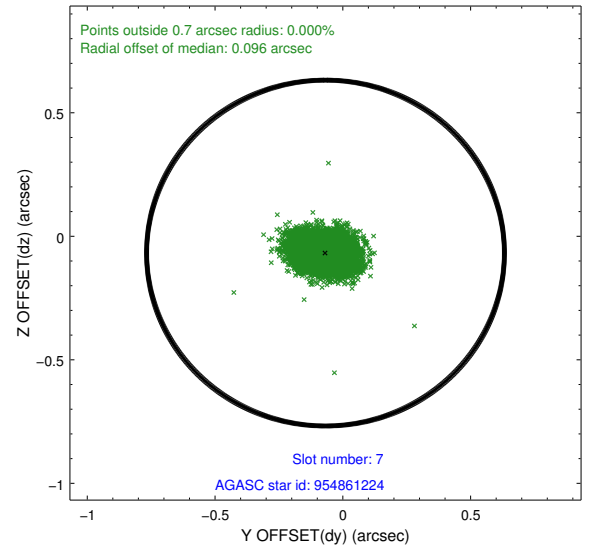
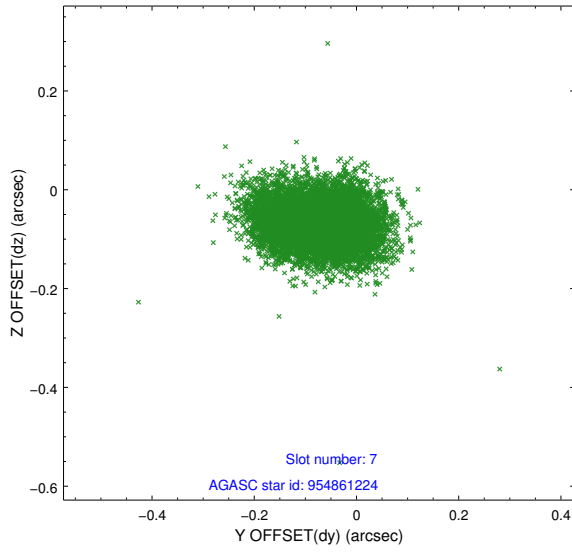
### 2.4.3 Slot 5



## 2.4.4 Slot 6

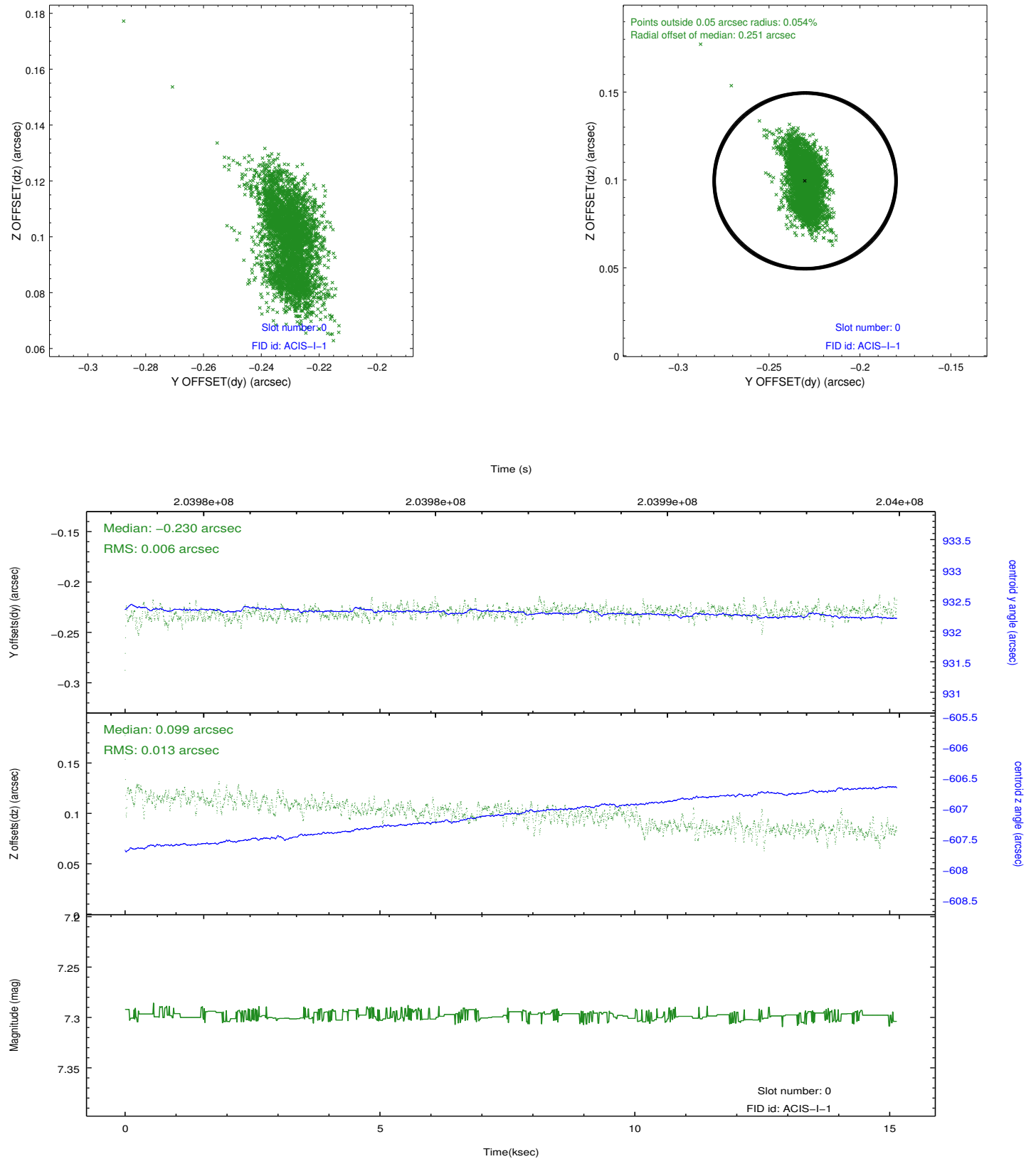


## 2.4.5 Slot 7

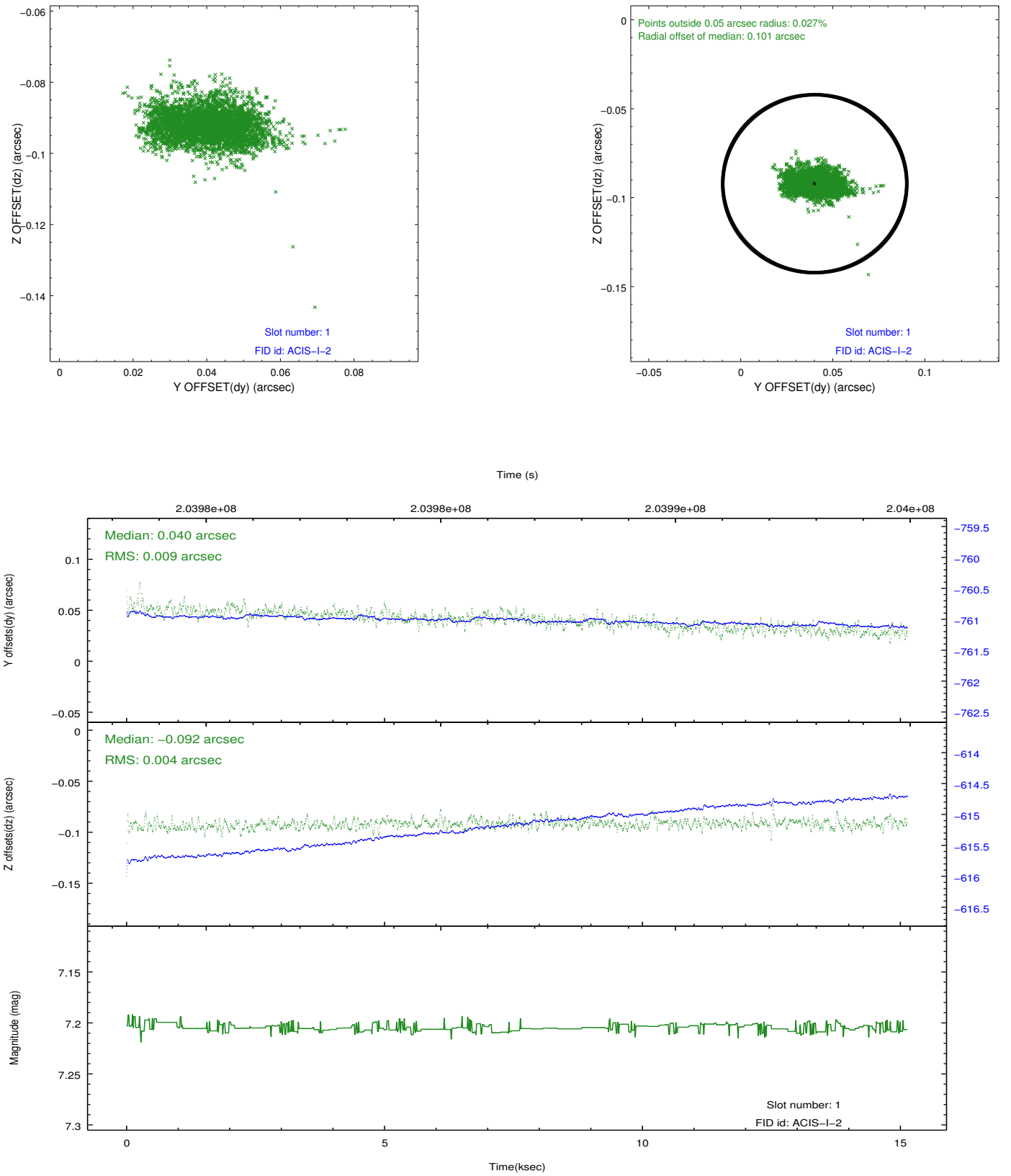


## 2.5 FID Slots

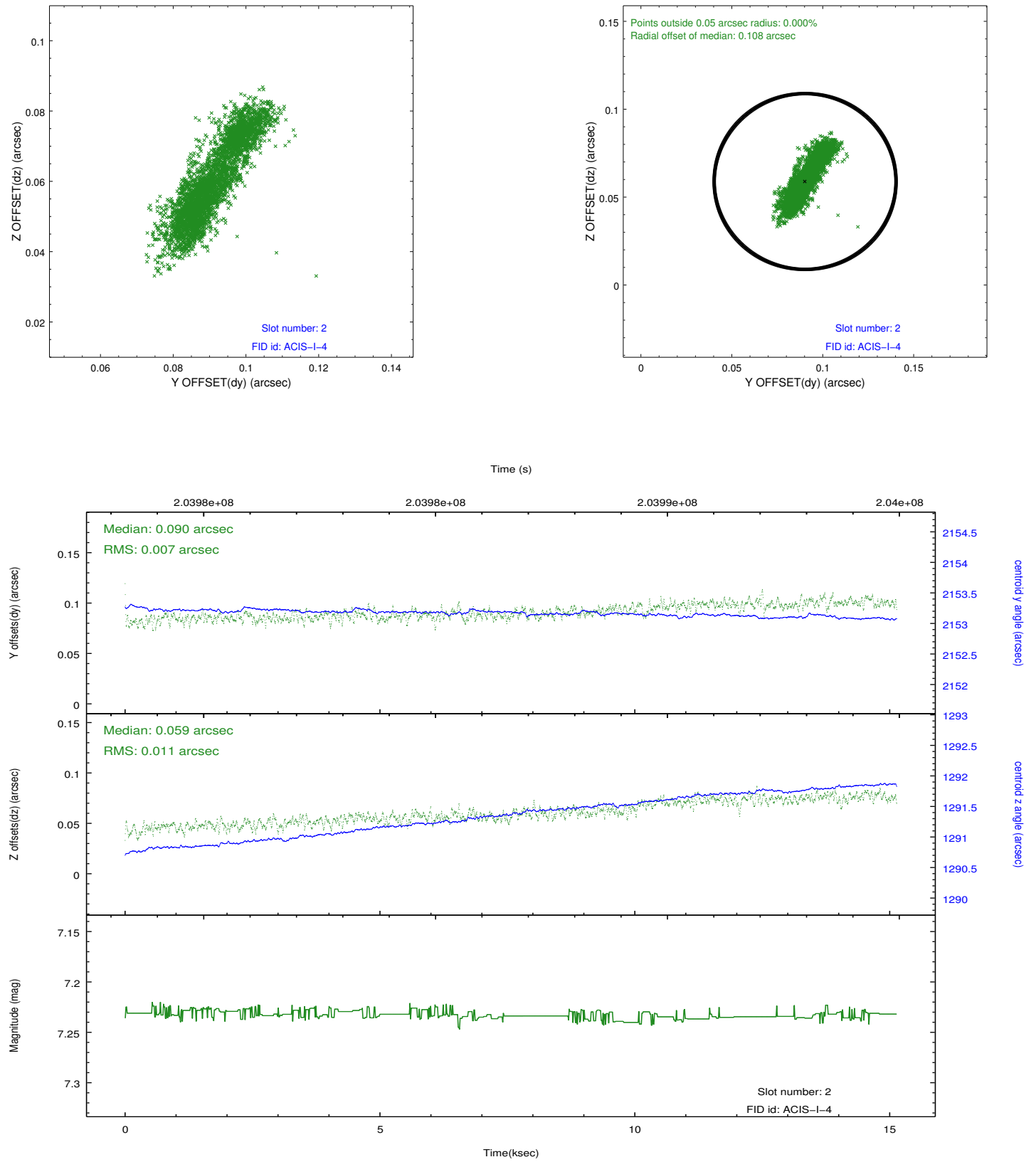
### 2.5.1 Slot 0



## 2.5.2 Slot 1



### 2.5.3 Slot 2



## A Summary

### A.1 Status

V&V Scientist	Jen Lauer
V&V Date (YYYY-MM-DD)	2012.12.18
V&V Edition	1
V&V Disposition and Status	OK
V&V Charge Time	14.768

### A.2 Comments