

V&V Reference Report

L2 ASCDS Version : 8.5

Observation 4996 - L2 Version 4
Chandra X-Ray Center

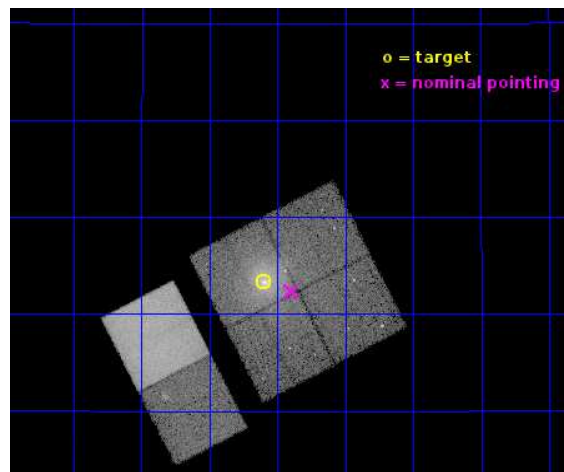
L2 Processing Date : Dec 6 2012

Contents

1	Front	2
2	OBI	3
2.1	OBI	3
2.1.1	Images	3
2.1.2	Bias	3
2.1.3	Parameters	4
2.1.4	Events	4
2.2	Compared Parameters	5
2.3	Aspect	6
2.4	Star Slots	9
2.4.1	Slot 3	9
2.4.2	Slot 4	10
2.4.3	Slot 5	11
2.4.4	Slot 6	12
2.4.5	Slot 7	13
2.5	FID Slots	14
2.5.1	Slot 0	14
2.5.2	Slot 1	15
2.5.3	Slot 2	16
A	Summary	17
A.1	Status	17
A.2	Comments	17

1 Front

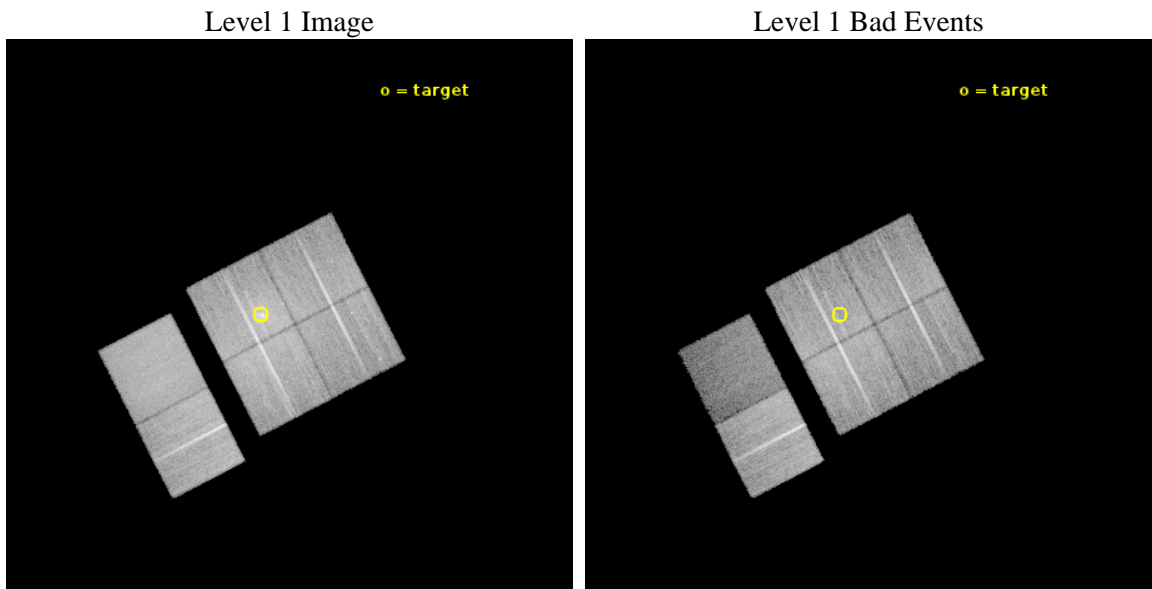
seq_num	800439	Sequence number
obs_id	4996	Observation id
title	A Comparison of X-Ray and Optical Properties of Low Redshift Rich Clusters, A2151	Proposal title
observer	Dr. Stephen Murray	Principal investigator
object	A2151	Source name
dtcycle	0	
cycle	P	events from which exps? Prim/Second/Both
ra_targ	241.15	Observer's specified target RA [deg]
dec_targ	17.723056	Observer's specified target Dec [deg]
ra_nom	241.09907796179	Nominal RA [deg]
dec_nom	17.705827361558	Nominal Dec [deg]
roll_nom	242.7958265246	Nominal Roll [deg]
revision	4	Processing version of data
ontime	22100.904177487	Sum of GTIs [s]
livetime	21821.049221225	Livetime [s]
ontime0	22097.540087223	Sum of GTIs [s]
ontime1	22097.58113721	Sum of GTIs [s]
ontime2	22097.6221672	Sum of GTIs [s]
ontime3	22100.904177487	Sum of GTIs [s]
ontime6	22100.986257493	Sum of GTIs [s]
ontime7	22100.94521749	Sum of GTIs [s]
l2events	239294	Number of level 2 events



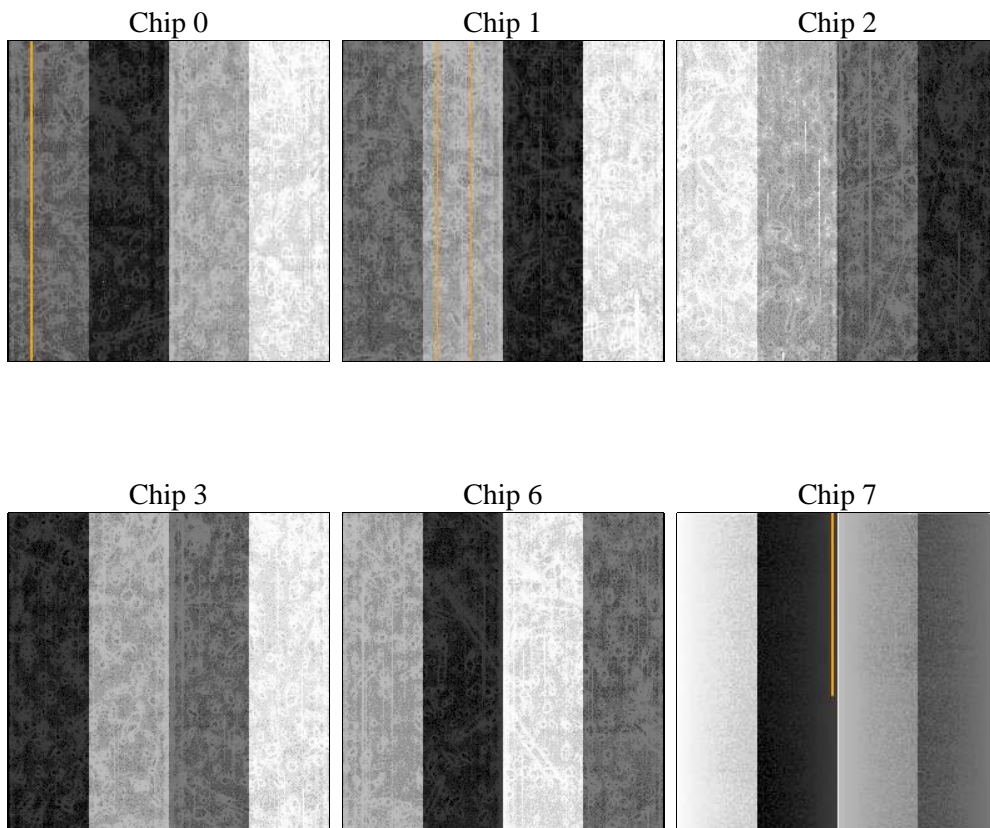
2 OBI

2.1 OBI

2.1.1 Images



2.1.2 Bias



2.1.3 Parameters

obi_num	0	Obi number	sched_exp_time	24805.863000	[s] Scheduled observation exposure time
ascdsver	8.5	Processing system revision	ontime	22100.904177487	Sum of GTIs [s]
caldsver	4.5.4	 	ontime0	22097.540087223	Sum of GTIs [s]
date	2012-12-06T11:22:01	Date and time of file creation	ontime1	22097.58113721	Sum of GTIs [s]
revision	4	Processing version of data	ontime2	22097.6221672	Sum of GTIs [s]
			ontime3	22100.904177487	Sum of GTIs [s]
			ontime6	22100.986257493	Sum of GTIs [s]
			ontime7	22100.94521749	Sum of GTIs [s]
			l1events	975480	Number of level 1 events

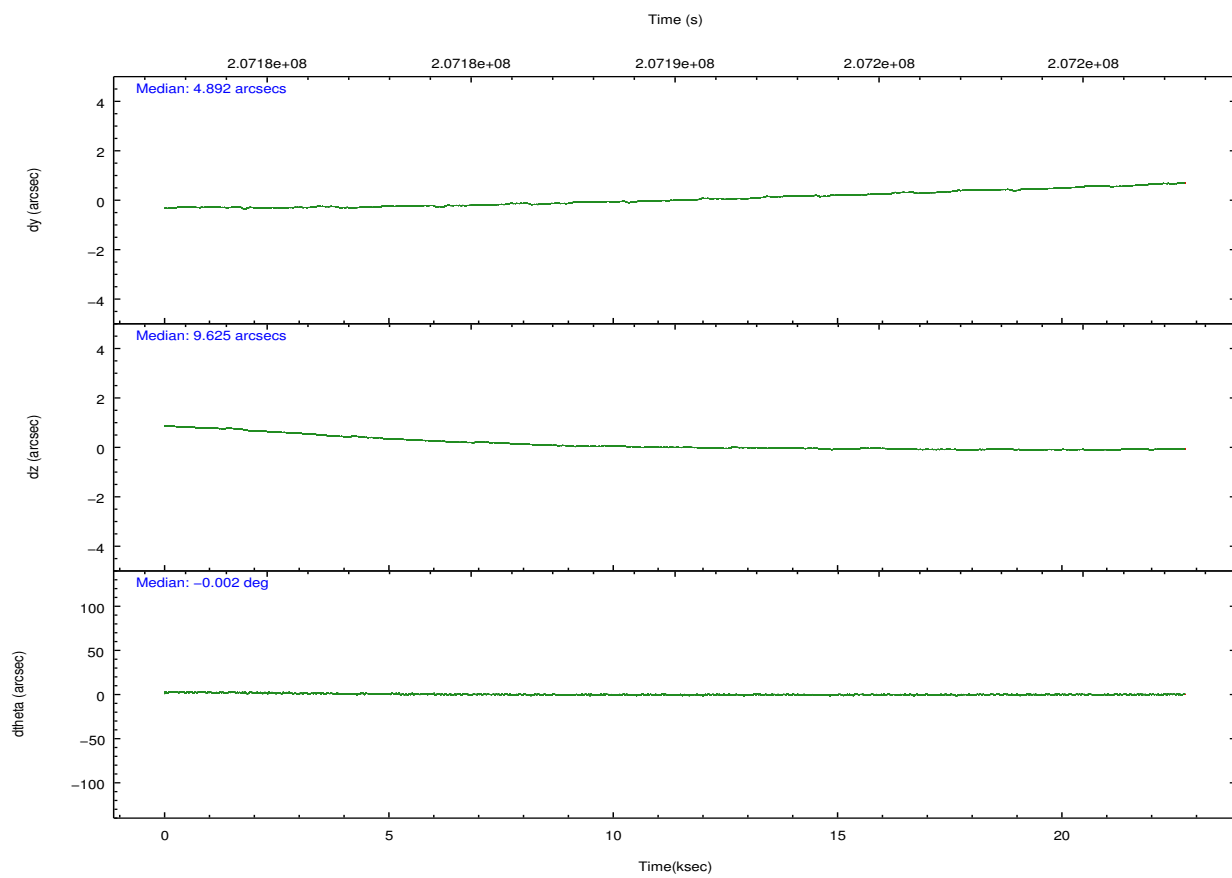
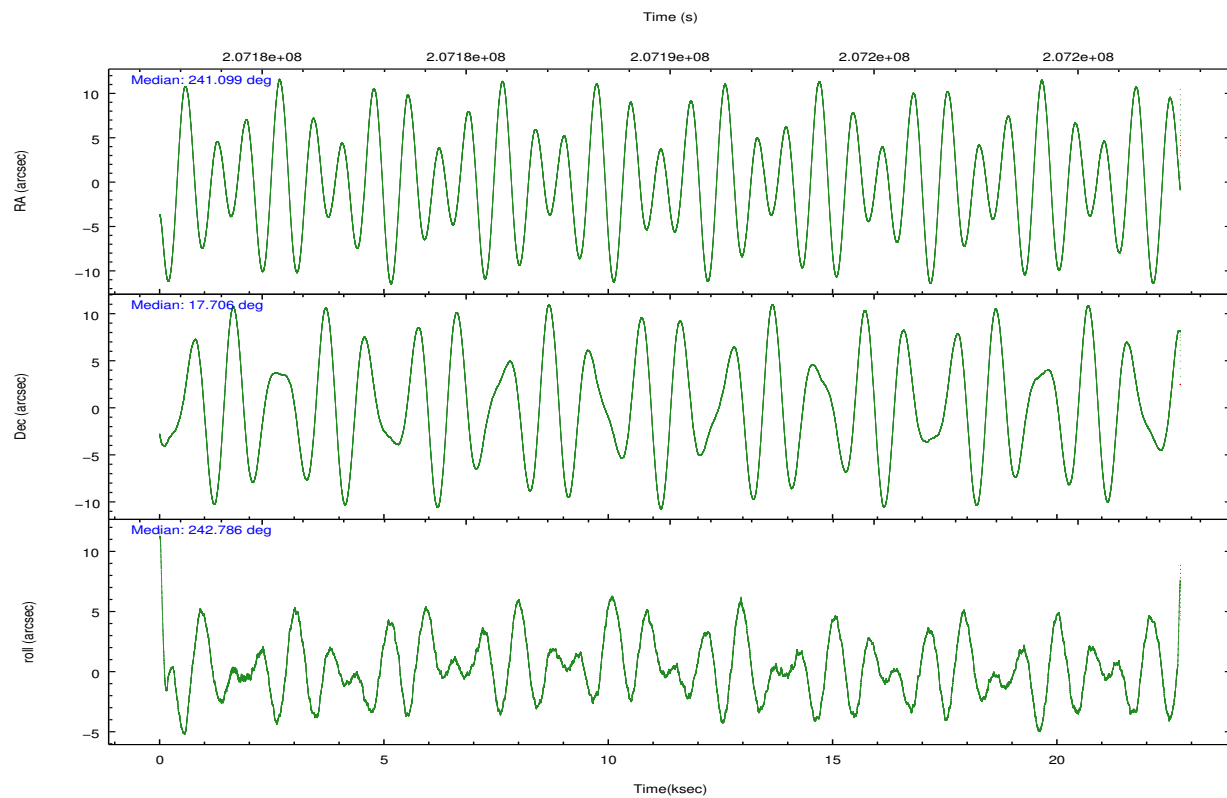
2.1.4 Events

	ccd 0	ccd 1	ccd 2	ccd 3	ccd 6	ccd 7		ccd 0	ccd 1	ccd 2	ccd 3	ccd 6	ccd 7
level 1 events	136679	143027	171881	178611	174043	171239	grade 0 events	13090	13824	15776	32111	15828	12768
rejected events	111606	117507	143026	132959	145307	58772		9%	9%	9%	17%	9%	7%
rejected %	81%	82%	83%	74%	83%	34%	grade 1 events	105	86	147	211	107	141
								0%	0%	0%	0%	0%	0%
							grade 2 events	5523	4656	6302	5885	5677	23157
								4%	3%	3%	3%	3%	13%
							grade 3 events	1777	1902	1658	2255	1816	10015
								1%	1%	0%	1%	1%	5%
							grade 4 events	1637	1822	2024	2240	1814	9873
								1%	1%	1%	1%	1%	5%
							grade 5 events	3422	3757	3358	4040	4100	12707
								2%	2%	1%	2%	2%	7%
							grade 6 events	3091	3357	3140	3236	3664	56852
								2%	2%	1%	1%	2%	33%
							grade 7 events	108034	113623	139476	128633	141037	45726
								79%	79%	81%	72%	81%	26%

2.2 Compared Parameters

Parameter	Planned	Actual	Parameter	Planned	Actual
Instrument	ACIS	ACIS	Obspar format version number	7	7
Detector	ACIS-012367	ACIS-012367	Obspar file type	PREDICTED	ACTUAL
Grating	NONE	NONE	Obspar update status	NONE	UPDATED
Data mode	VFAINT	VFAINT	Number of optional ACIS chips dropped	0	0
Observation mode	POINTING	POINTING	On-chip summing requested	N	N
[deg] Pointing RA	241.097571	241.0990779617911	Subarray requested	NONE	NONE
[deg] Pointing Dec	17.733194	17.70582736155777	Alternating exposures requested	N	N
[deg] Pointing Roll	242.587592	242.7958265246036	[s] Primary exposure time	0.000000	3.2
[mm] SIM focus pos	-0.782348	-0.7809083437167272			
[mm] SIM defocus	0	0.001439871863259334			
[mm] SIM translation stage pos	-233.592463	-233.5874344608287			
[mm] SIM translation stage offset	0	-0.005018542100998502			
[s] Observation start time (MET)	207179207.184000	207178049.3969			
Observation start date	2004-07-25T21:45:43	2004-07-25T21:27:29			
[s] Observation end time (MET)	207204013.184000	207201389.67294			
Observation end date	2004-07-26T04:39:09	2004-07-26T03:56:29			
Read mode	TIMED	TIMED			

2.3 Aspect

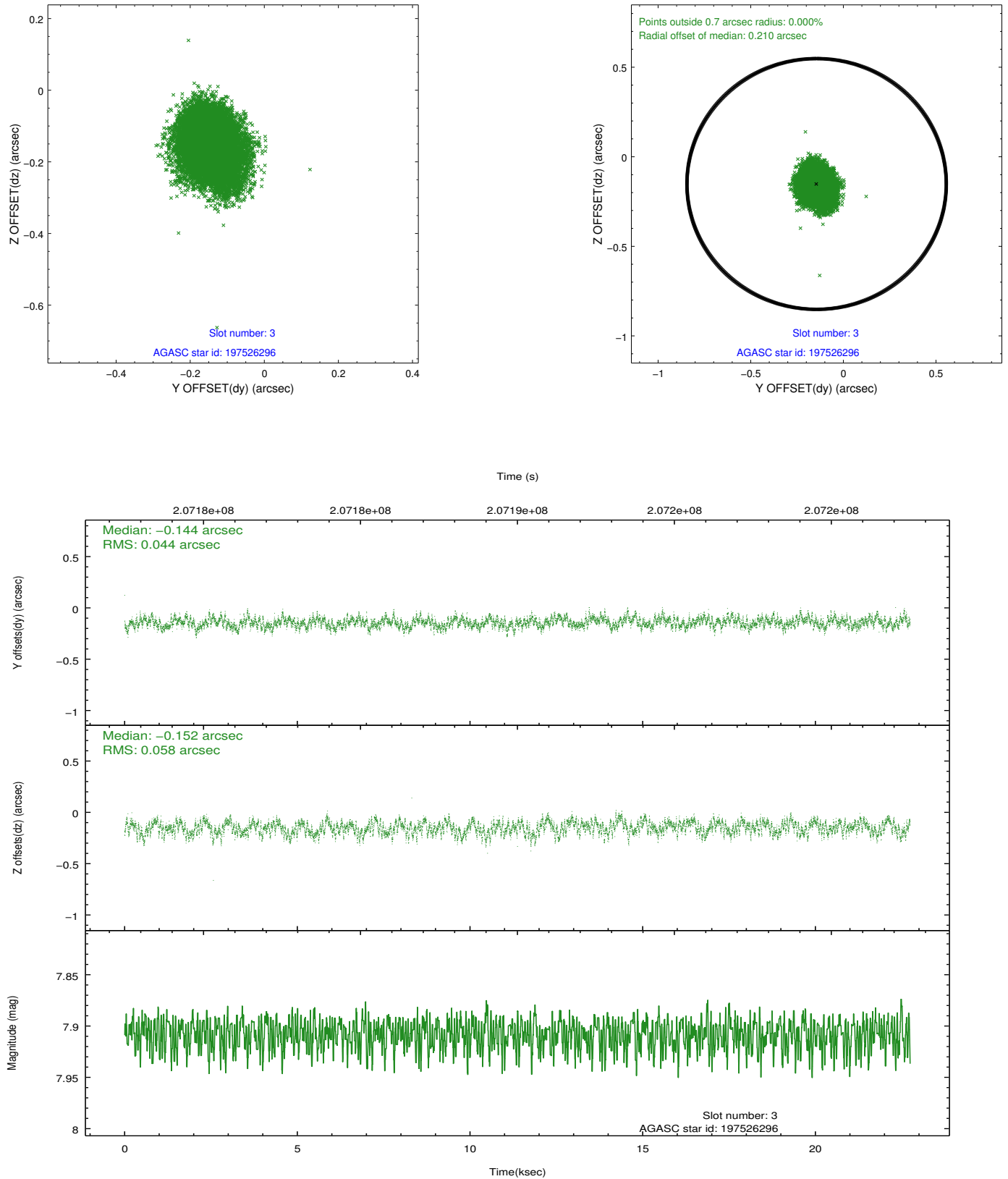


Slot Statistics

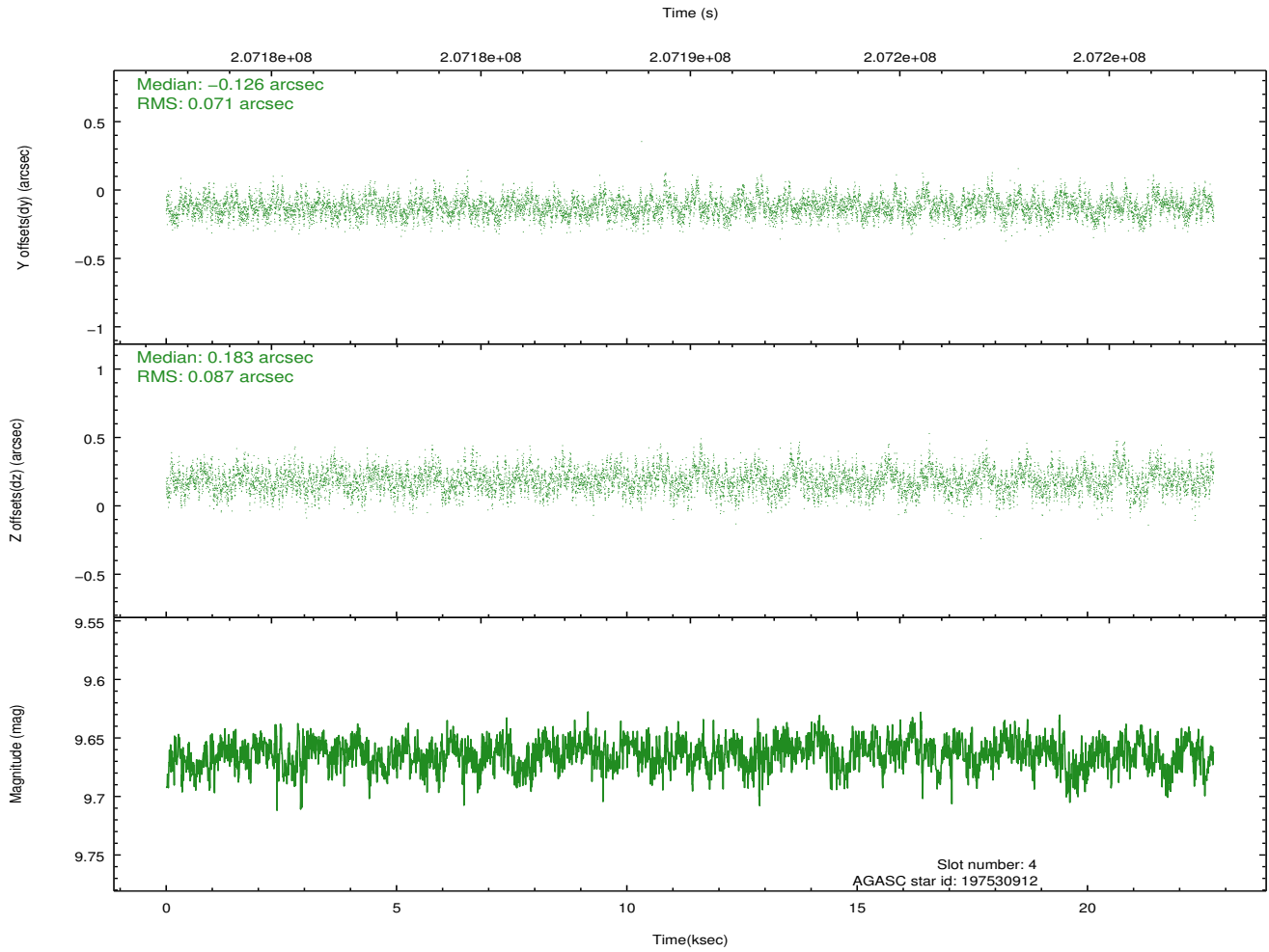
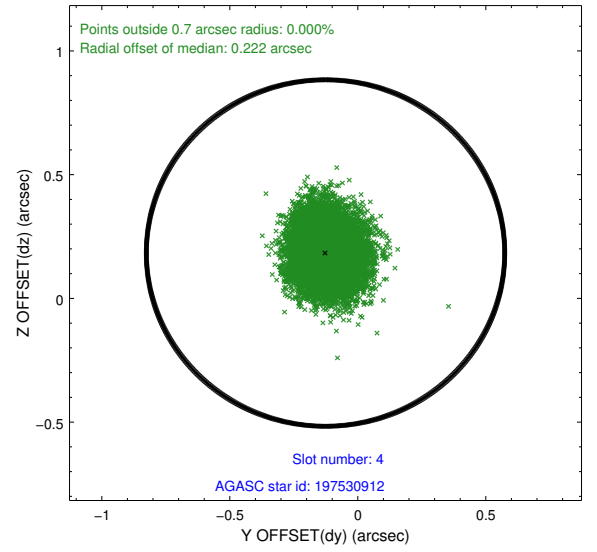
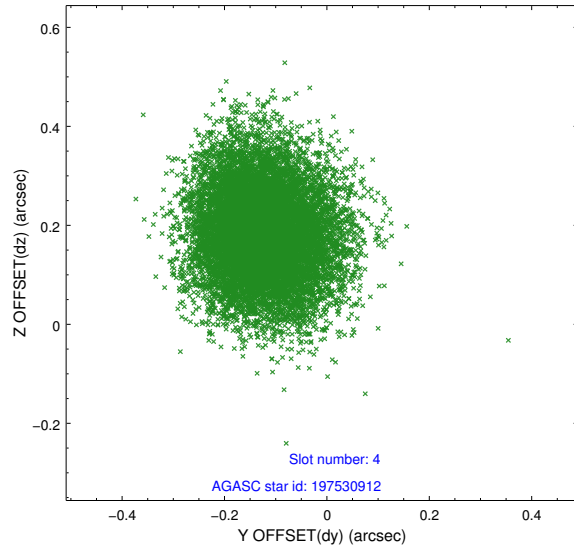
slot	status	id	mag	n_pts	med_dy	med_dz	dr1	dr2	ra	dec	mean_y	mean_z
0	FID	ACIS-I-1	7.24	5548	0.010	0.028	0.021	0.038	0.000000	0.000000	934.80	-833.20
1	FID	ACIS-I-5	7.23	5545	-0.169	0.031	0.015	0.022	0.000000	0.000000	-1813.42	1064.20
2	FID	ACIS-I-6	7.25	5548	0.066	0.011	0.015	0.026	0.000000	0.000000	400.23	1708.87
3	GUIDE	197526296	7.91	11094	-0.144	-0.152	0.078	0.123	240.655589	18.114009	-521.86	-1974.71
4	GUIDE	197530912	9.66	11086	-0.126	0.183	0.119	0.193	241.559759	17.403488	320.92	1955.02
5	GUIDE	197530968	9.67	11021	-0.034	0.158	0.116	0.190	241.553279	17.328552	570.48	2060.52
6	GUIDE	197531712	9.26	11087	0.153	-0.255	0.105	0.170	240.314426	17.436774	2181.62	-1898.68
7	GUIDE	197532936	9.75	11084	0.146	0.067	0.139	0.214	241.049650	17.100636	2097.93	902.32

2.4 Star Slots

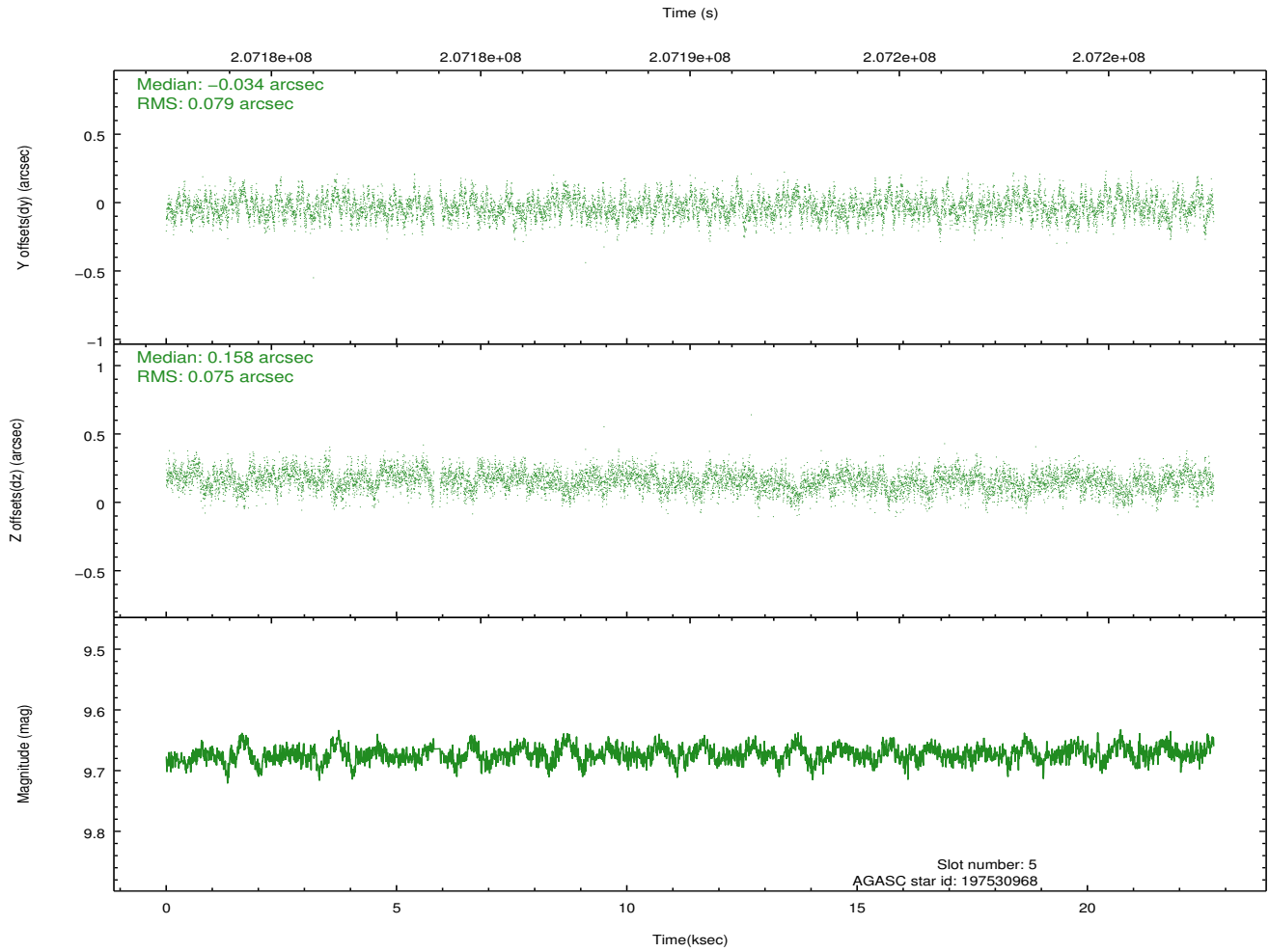
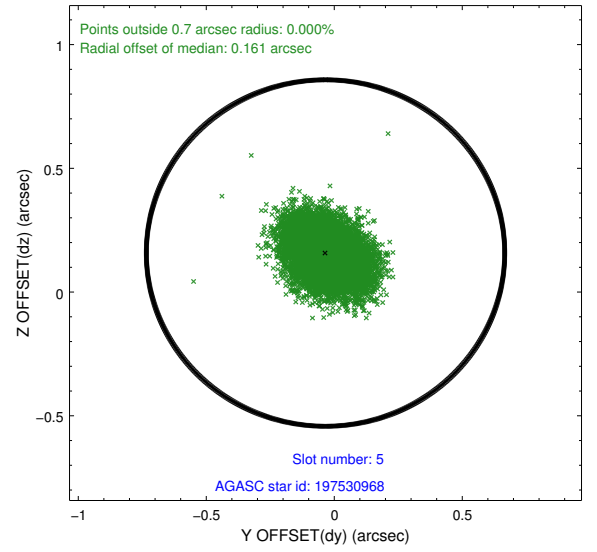
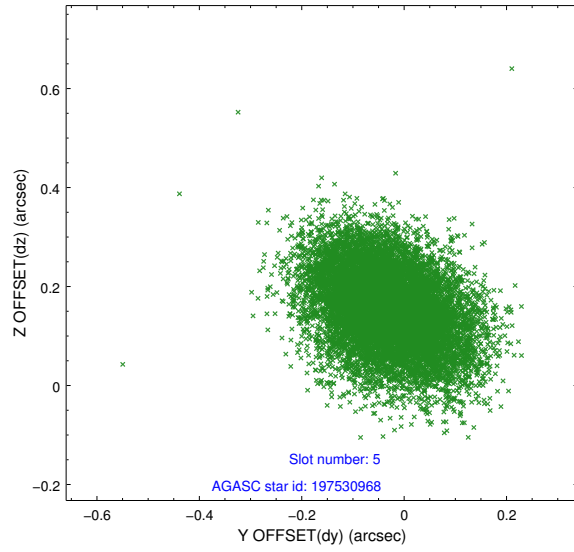
2.4.1 Slot 3



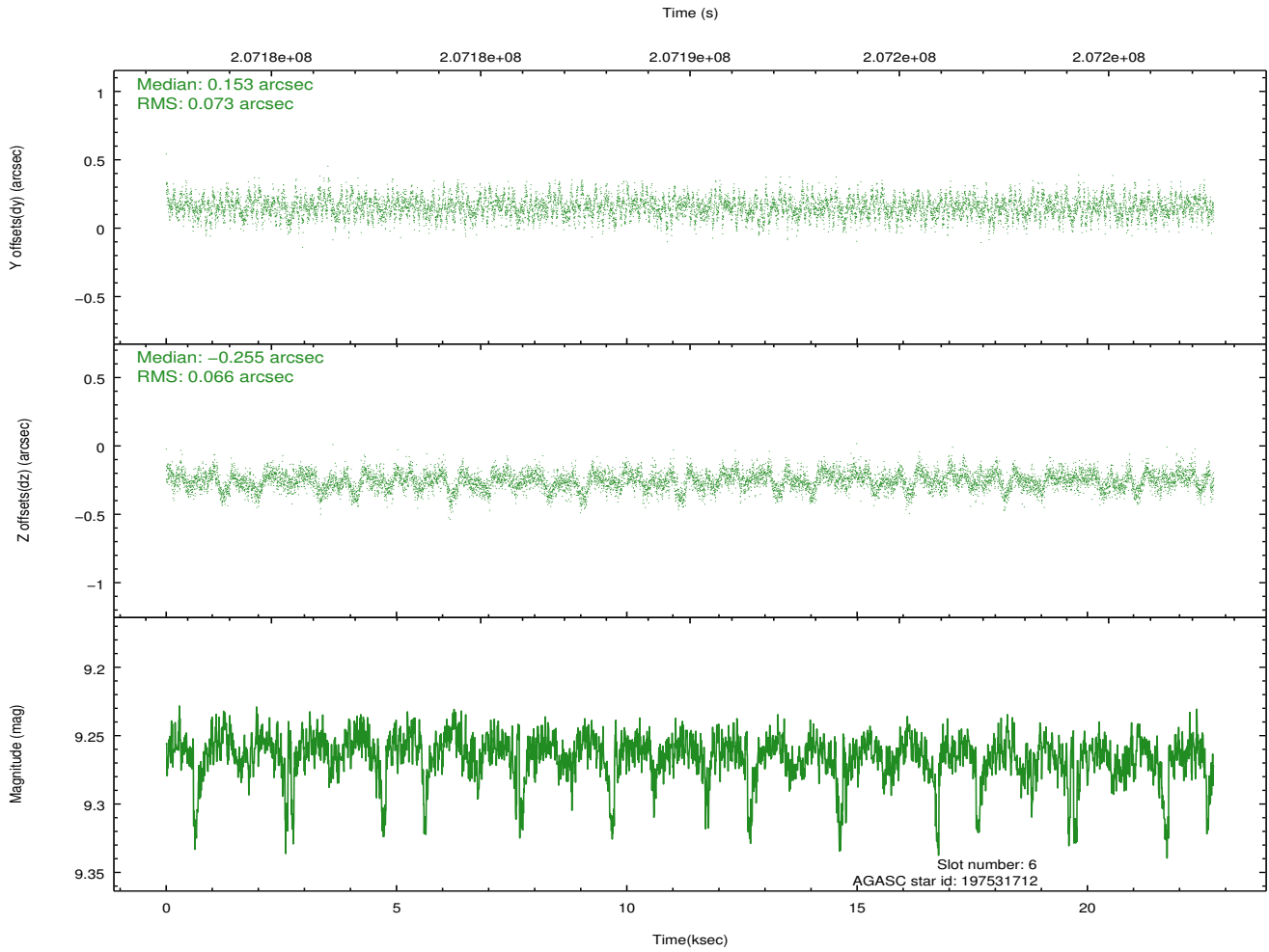
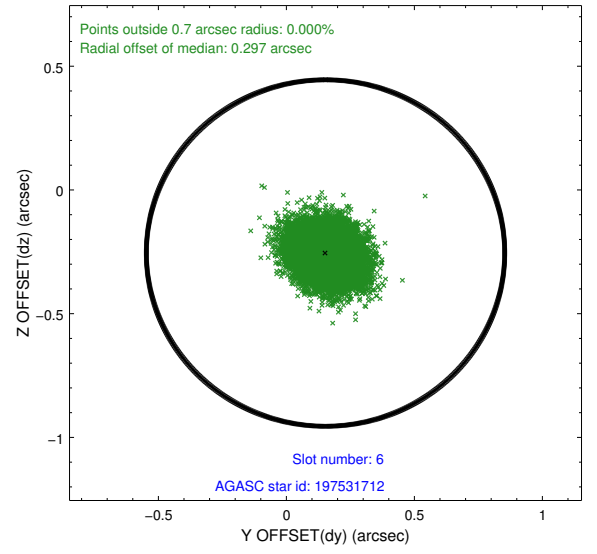
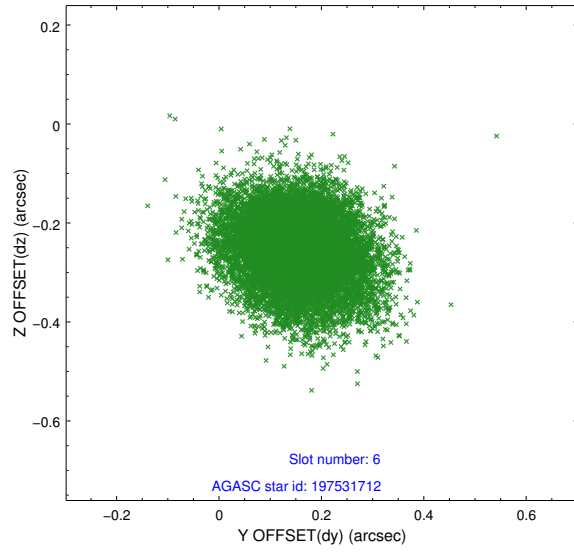
2.4.2 Slot 4



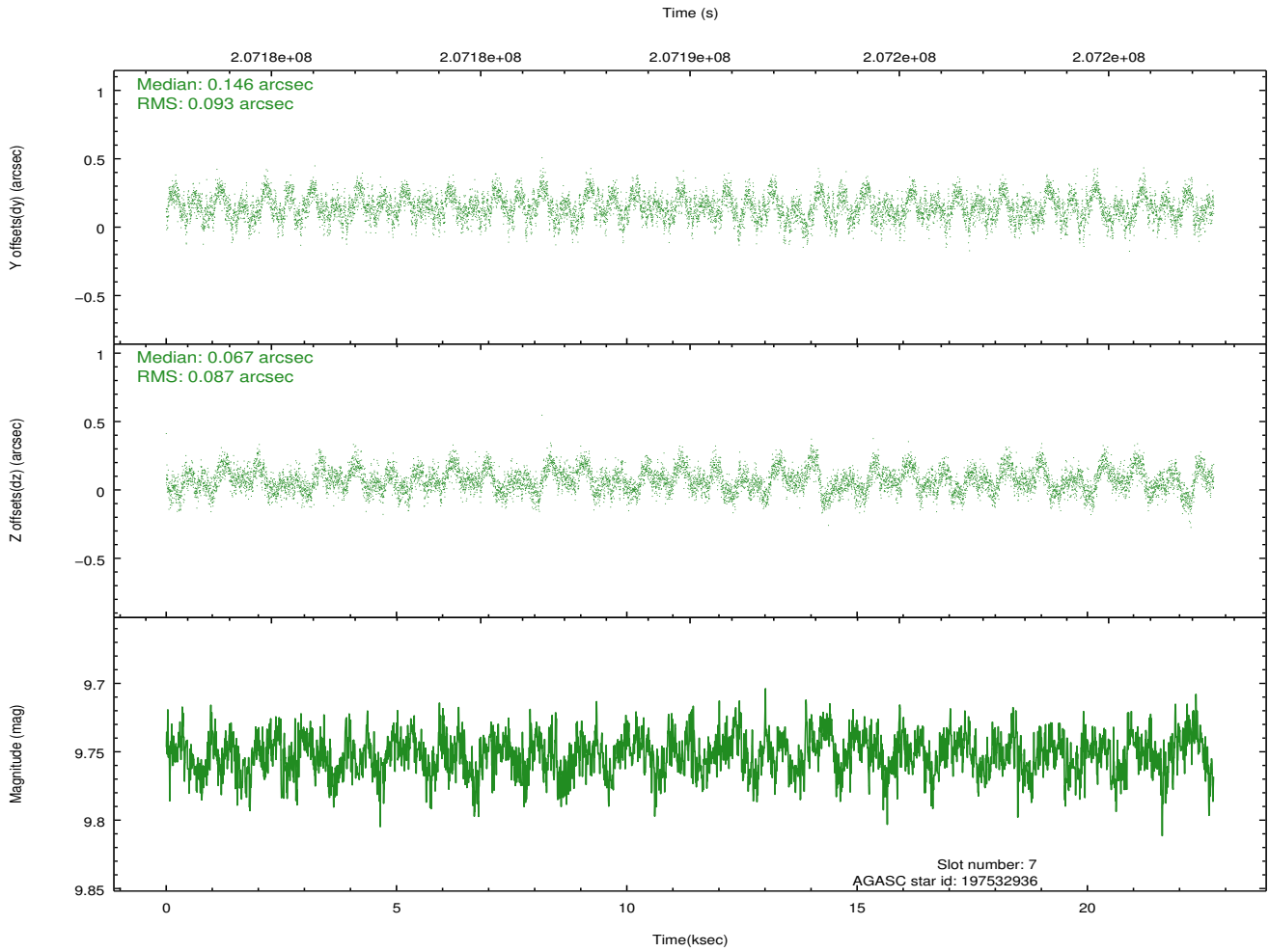
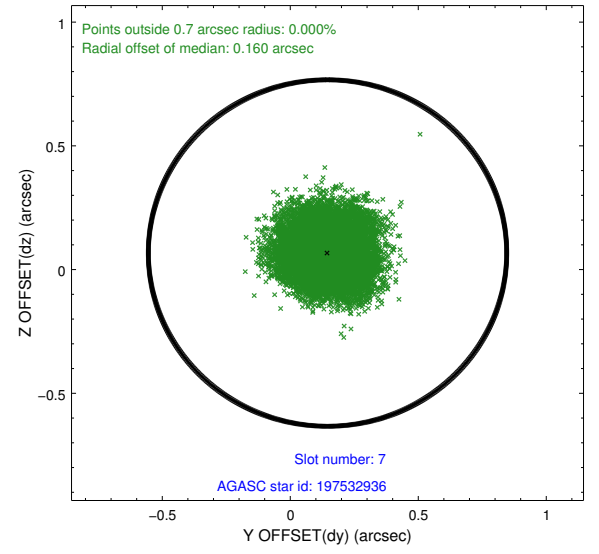
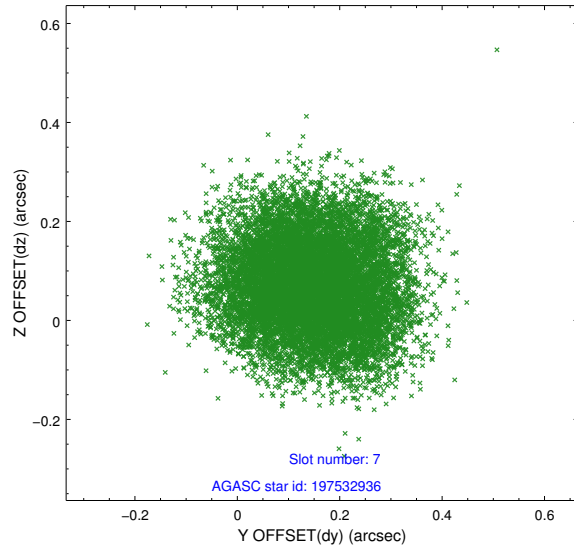
2.4.3 Slot 5



2.4.4 Slot 6

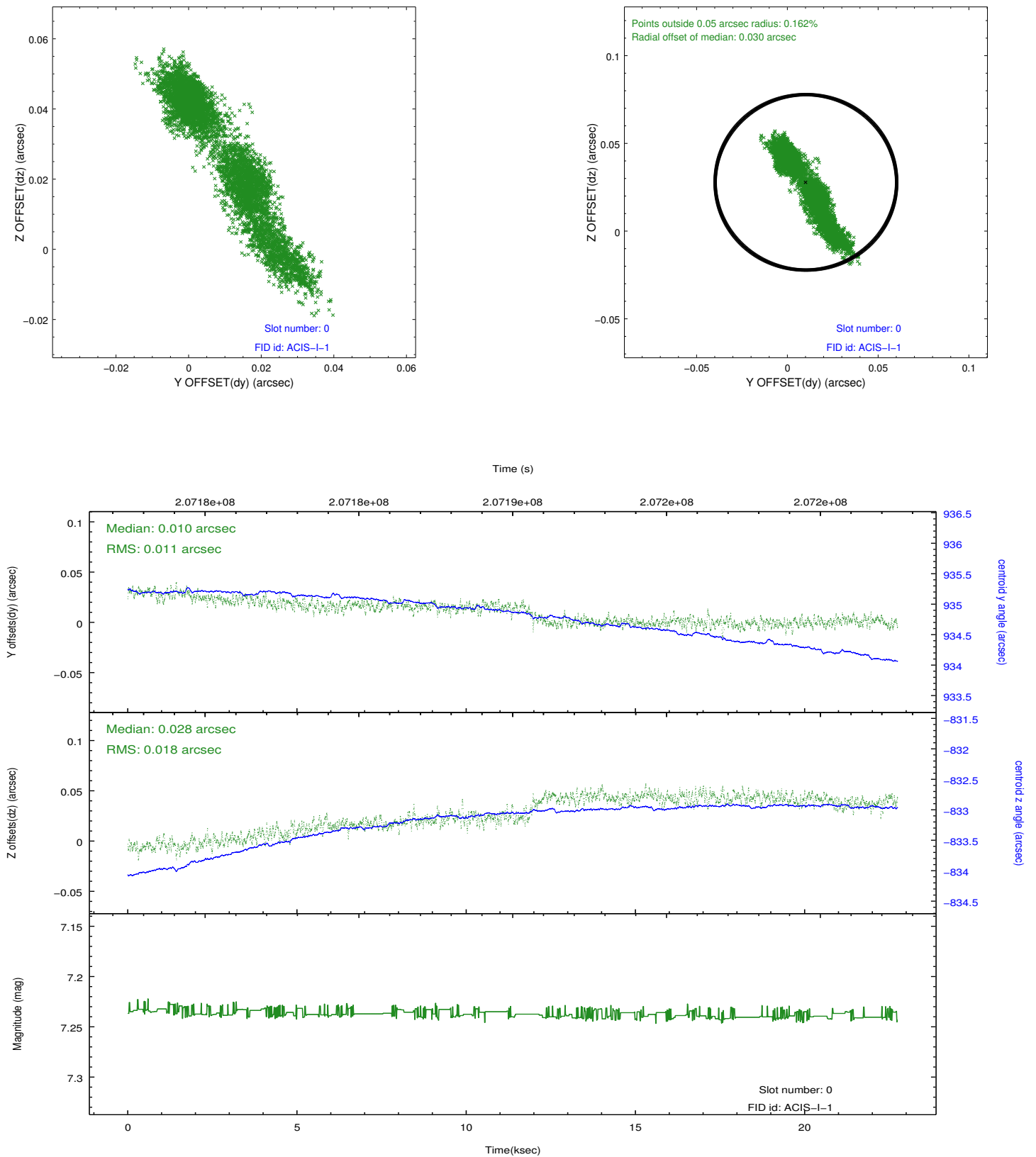


2.4.5 Slot 7

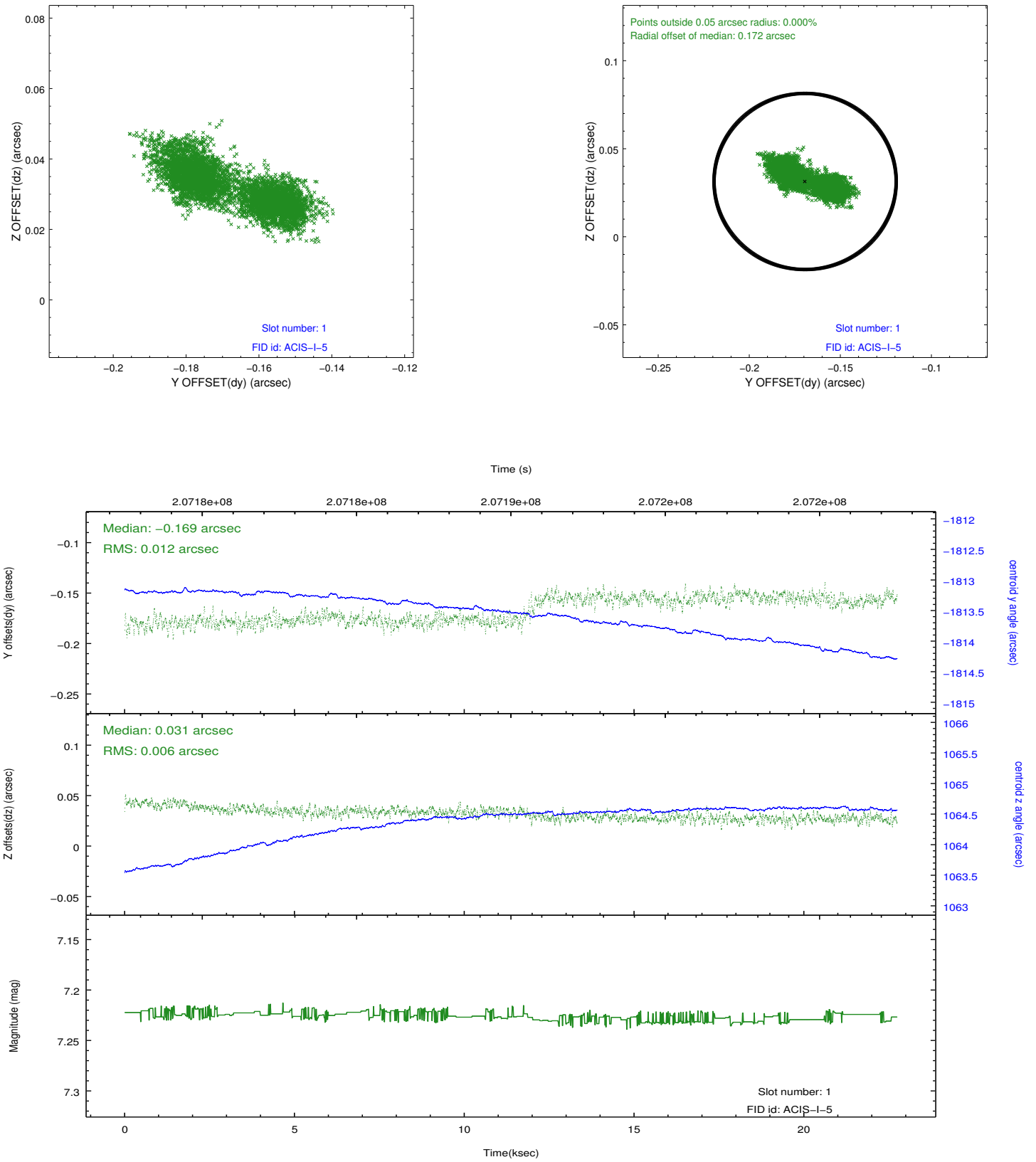


2.5 FID Slots

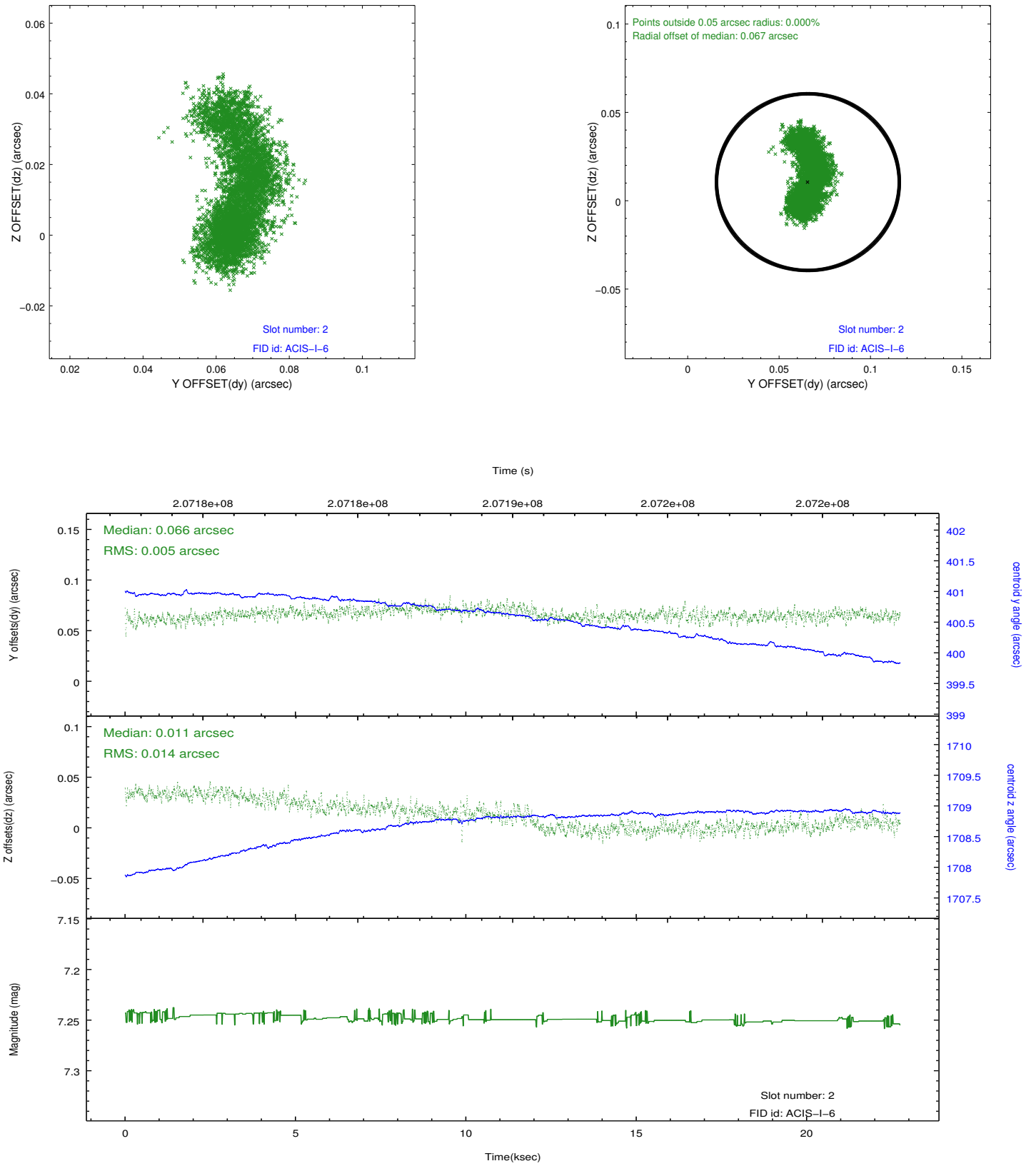
2.5.1 Slot 0



2.5.2 Slot 1



2.5.3 Slot 2



A Summary

A.1 Status

V&V Scientist	Jen Lauer
V&V Date (YYYY-MM-DD)	2012.12.20
V&V Edition	1
V&V Disposition and Status	OK
V&V Charge Time	22.118

A.2 Comments

This observation was interrupted by safing of the science instruments onboard Chandra due to high solar radiation environment. The observation was interrupted at 2004:208:04:06:28 UT. Due to a high radiation environment, the instruments were safed and the observation terminated early.