

# V&V Reference Report

## L2 ASCDS Version : 7.6.7.2

Observation 4996 - L2 Version 3  
Chandra X-Ray Center

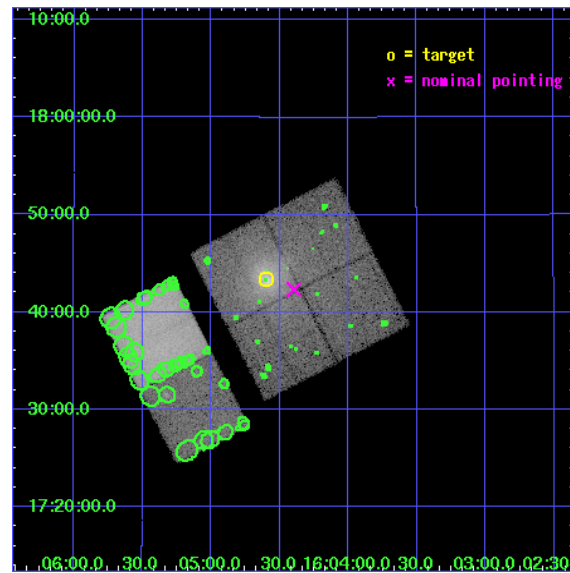
L2 Processing Date : Jan 12 2009

## Contents

<b>1</b>	<b>Front</b>	<b>2</b>
<b>2</b>	<b>OBI</b>	<b>3</b>
2.1	OBI . . . . .	3
2.1.1	Images . . . . .	3
2.1.2	Bias . . . . .	3
2.1.3	Parameters . . . . .	4
2.1.4	Events . . . . .	4
2.2	Compared Parameters . . . . .	5
2.3	Aspect . . . . .	6
2.4	Star Slots . . . . .	9
2.4.1	Slot 3 . . . . .	9
2.4.2	Slot 4 . . . . .	10
2.4.3	Slot 5 . . . . .	11
2.4.4	Slot 6 . . . . .	12
2.4.5	Slot 7 . . . . .	13
2.5	FID Slots . . . . .	14
2.5.1	Slot 0 . . . . .	14
2.5.2	Slot 1 . . . . .	15
2.5.3	Slot 2 . . . . .	16
<b>3</b>	<b>Point Sources</b>	<b>17</b>
<b>A</b>	<b>Summary</b>	<b>18</b>
A.1	Status . . . . .	18
A.2	Comments . . . . .	18

# 1 Front

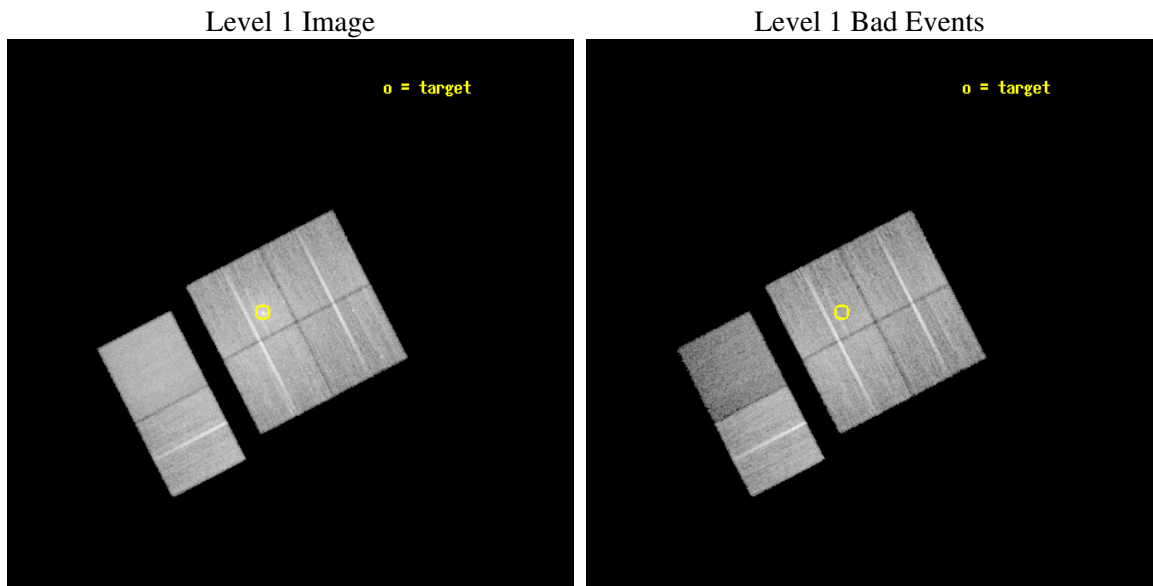
seq_num	800439
obs_id	4996
title	A Comparison of X-Ray and Optical Properties of Low Redshift Rich Clusters, A2151
observer	Dr. Stephen Murray
object	A2151
dtcycle	0
cycle	P
ra_targ	241.15
dec_targ	17.723056
ra_nom	241.09909847542
dec_nom	17.705848801289
roll_nom	242.79580981646
revision	3
ontime	22118.399917603
livetime	21838.323419744
ontime0	22115.140087157
ontime1	22115.158957332
ontime2	22115.158947319
ontime3	22118.399917603
ontime6	22118.399917603
ontime7	22118.399917603
l2events	240072



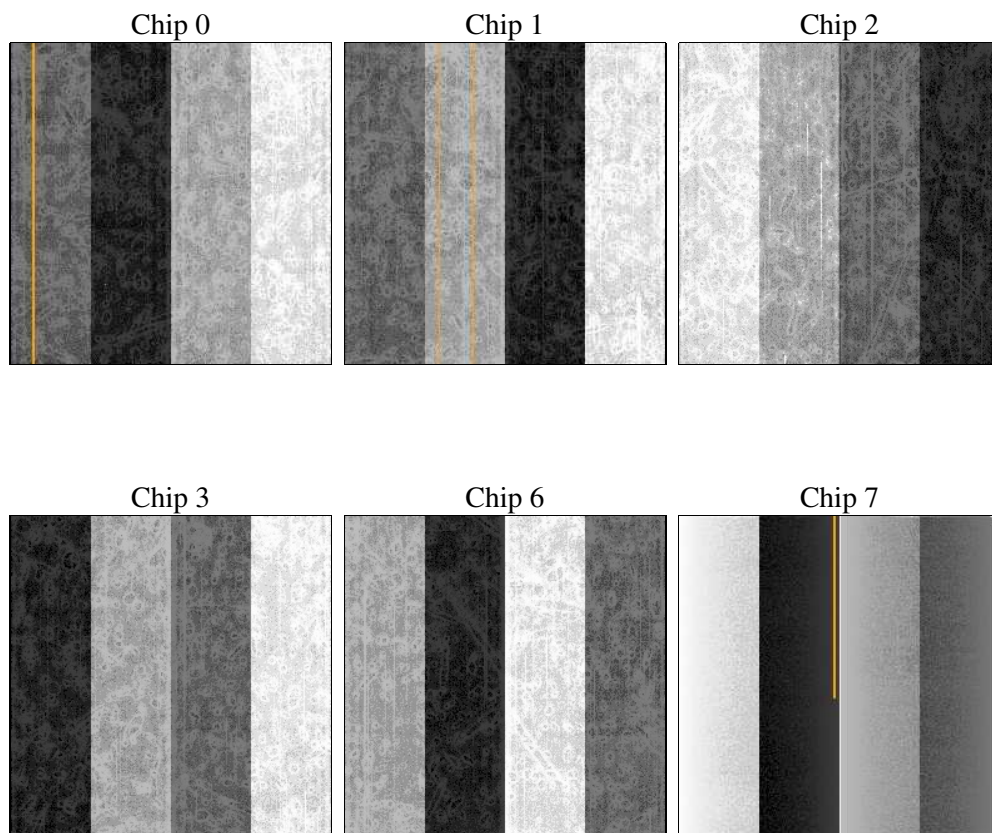
## 2 OBI

### 2.1 OBI

#### 2.1.1 Images



#### 2.1.2 Bias



### 2.1.3 Parameters

obi_num	0
ascdsver	7.6.11.10
caldbver	3.5.1
date	2009-01-12T20:54:52
revision	3

sched_exp_time	24805.863000
ontime	22118.399917603
ontime0	22115.140087157
ontime1	22115.158957332
ontime2	22115.158947319
ontime3	22118.399917603
ontime6	22118.399917603
ontime7	22118.399917603
l1events	975480

### 2.1.4 Events

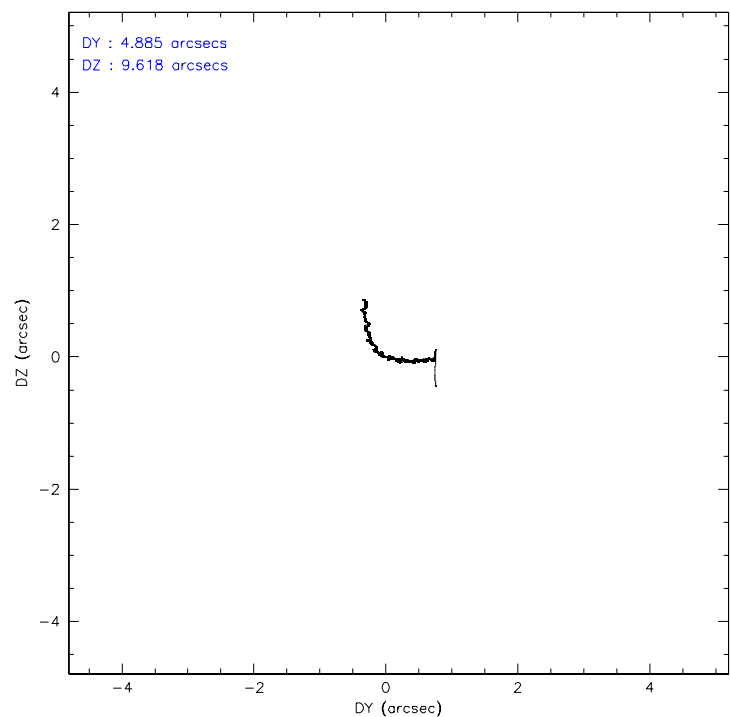
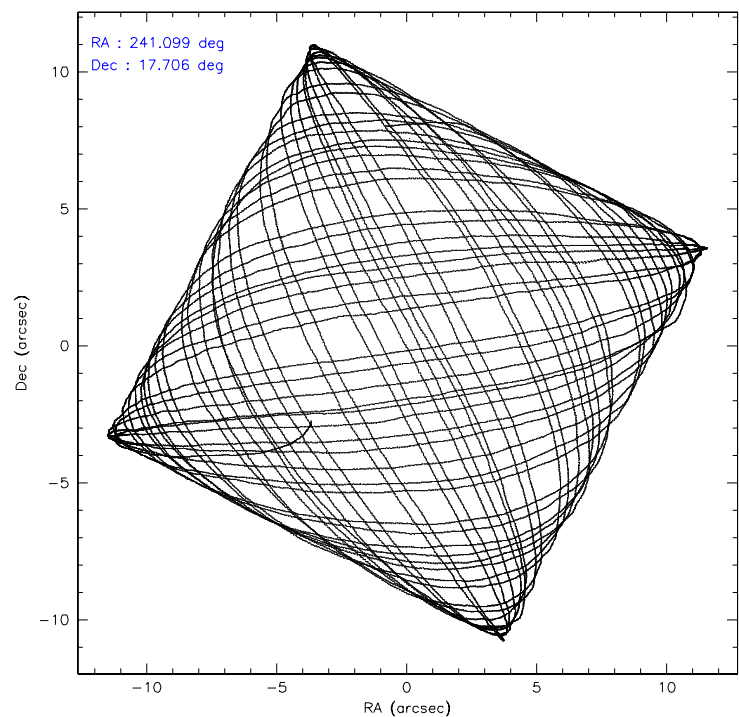
	ccd 0	ccd 1	ccd 2	ccd 3	ccd 6	ccd 7
level 1 events	136679	143027	171881	178611	174043	171239
rejected events	111580	117483	143000	132910	145261	58640
rejected %	81%	82%	83%	74%	83%	34%

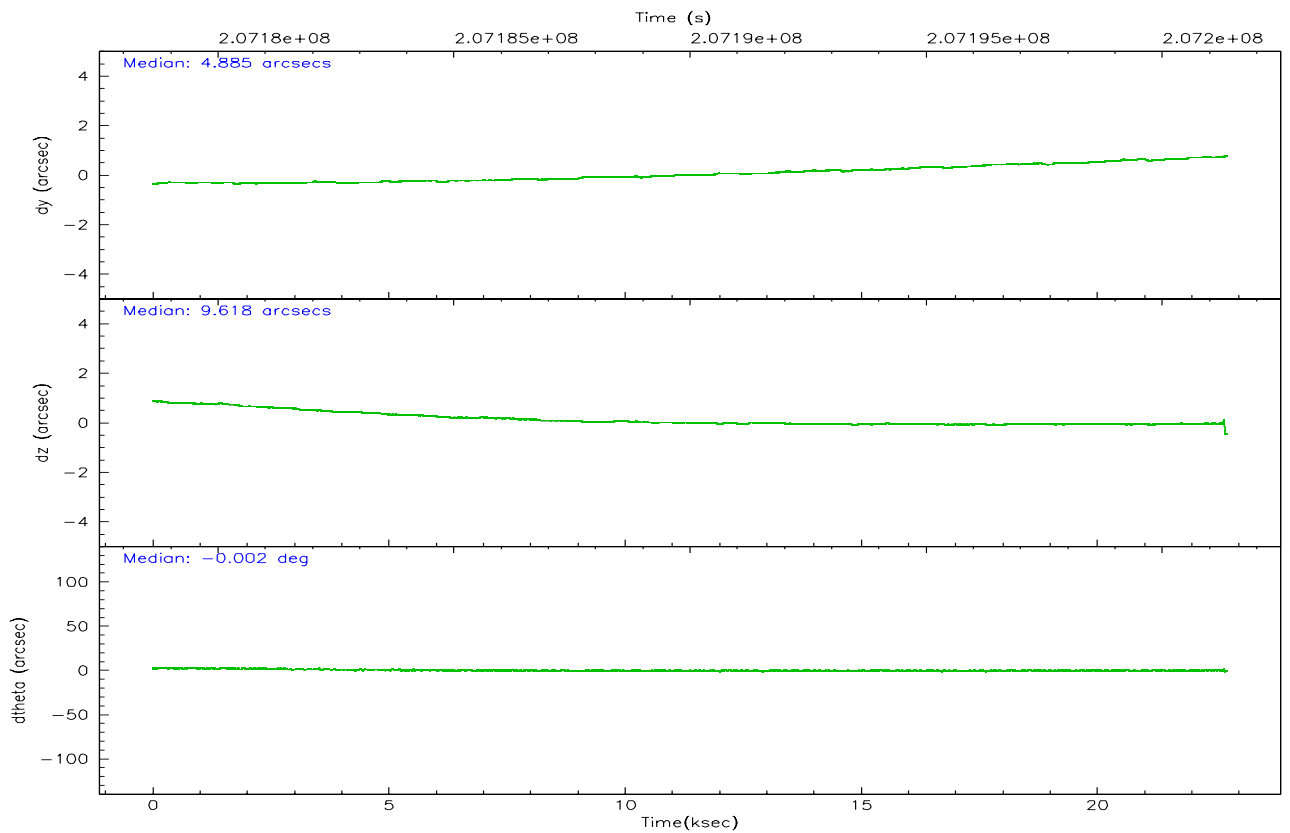
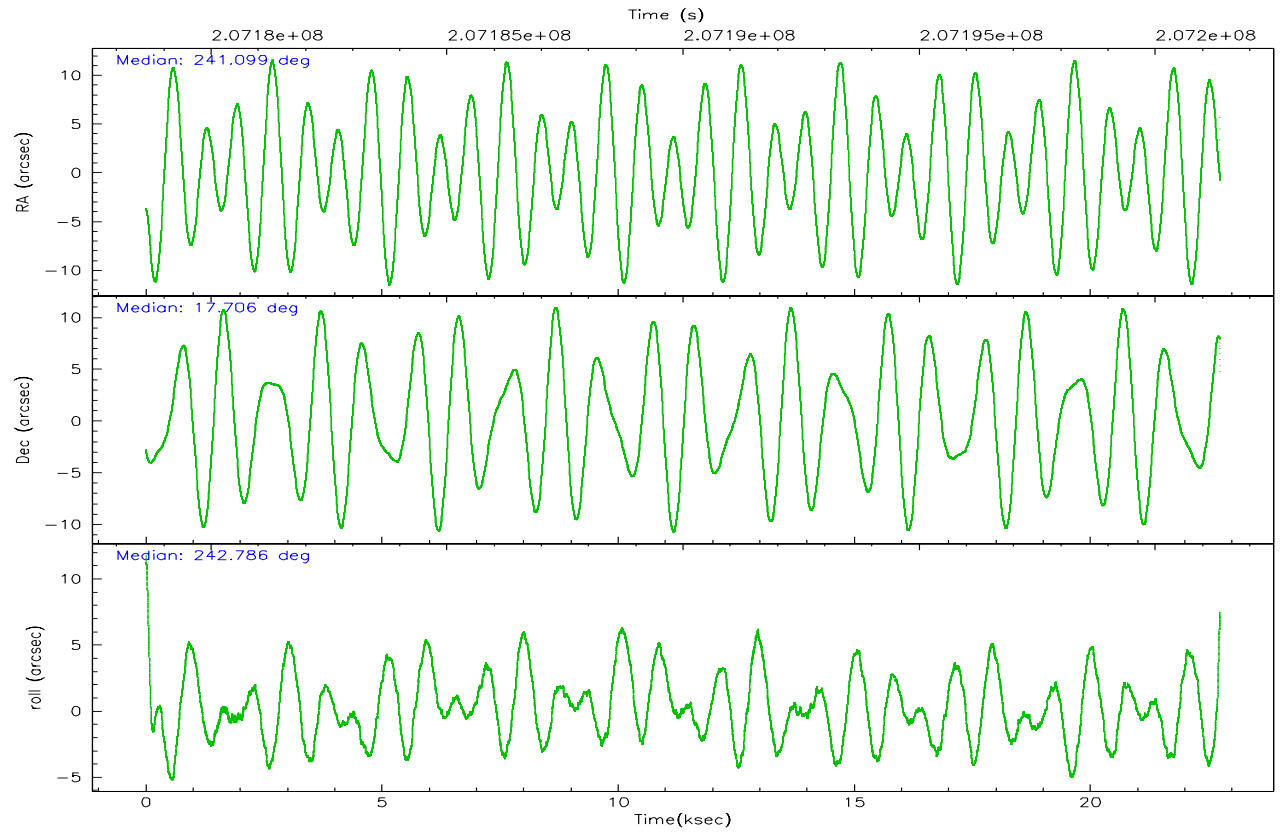
	ccd 0	ccd 1	ccd 2	ccd 3	ccd 6	ccd 7
grade 0 events	13090	13824	15776	32111	15828	12768
	9%	9%	9%	17%	9%	7%
grade 1 events	105	86	147	211	107	140
	0%	0%	0%	0%	0%	0%
grade 2 events	5523	4656	6302	5885	5677	23157
	4%	3%	3%	3%	3%	13%
grade 3 events	1777	1902	1658	2255	1816	10015
	1%	1%	0%	1%	1%	5%
grade 4 events	1637	1822	2024	2240	1814	9872
	1%	1%	1%	1%	1%	5%
grade 5 events	3422	3757	3358	4040	4100	12708
	2%	2%	1%	2%	2%	7%
grade 6 events	3091	3357	3140	3236	3664	56853
	2%	2%	1%	1%	2%	33%
grade 7 events	108034	113623	139476	128633	141037	45726
	79%	79%	81%	72%	81%	26%

## 2.2 Compared Parameters

Parameter	Planned	Actual	Parameter	Planned	Actual
Instrument	ACIS	ACIS	Obspar format version number	6	6
Detector	ACIS-012367	ACIS-012367	Obspar file type	PREDICTED	ACTUAL
Grating	NONE	NONE	Obspar update status	NONE	UPDATED
Data mode	VFAINT	VFAINT	On-chip summing requested	N	N
Observation mode	POINTING	POINTING	Subarray requested	NONE	NONE
Pointing RA	241.097571	241.0990984754154	Alternating exposures requested	N	N
Pointing Dec	17.733194	17.70584880128884	Primary exposure time	0.000000	3.2
Pointing Roll	242.587592	242.7958098164577			
SIM focus pos (mm)	-0.782348	-0.7809083437167272			
SIM defocus (mm)	0	0.001439871863259334			
SIM translation stage pos (mm)	-233.592463	-233.5874344608287			
SIM translation stage offset (mm)	0	-0.005018542100998502			
Observation start time	207179207.184000	207178049.3969			
Observation start date	2004-07-25T21:45:43	2004-07-25T21:27:29			
Observation end time	207204013.184000	207201416.32294			
Observation end date	2004-07-26T04:39:09	2004-07-26T03:56:56			
Read mode	TIMED	TIMED			

## 2.3 Aspect





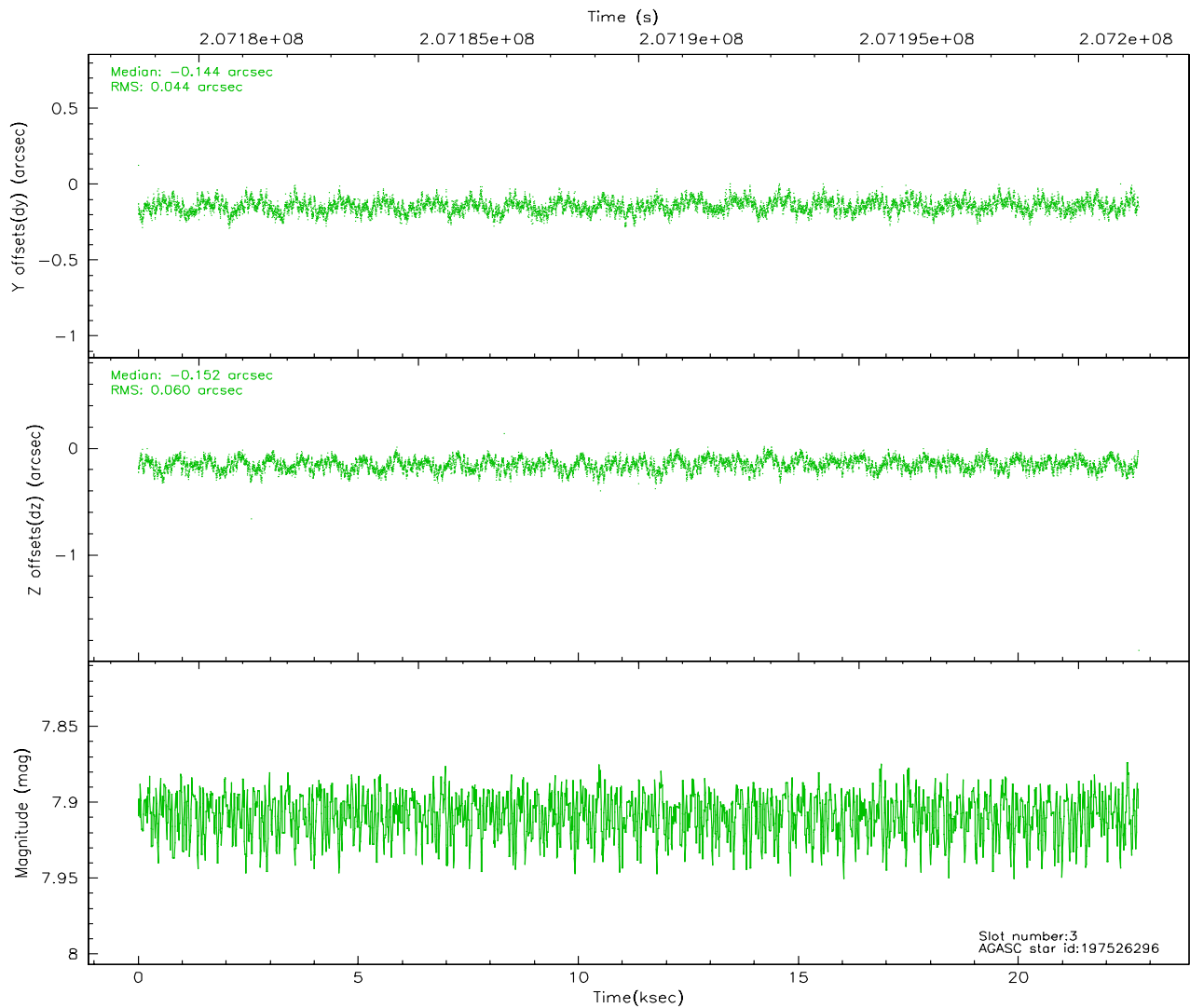
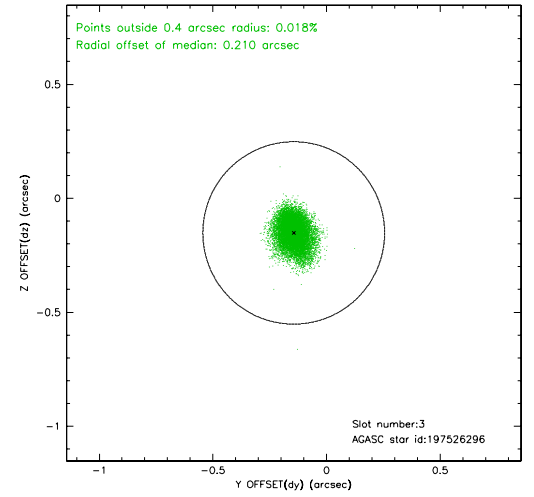
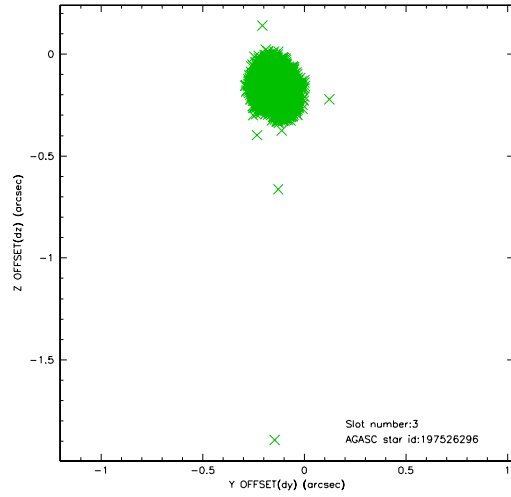
### Slot Statistics

slot	status	id	mag	n_pts	med_dy	med_dz	dr1	dr2	ra	dec	mean_y	mean_z
0	FID	ACIS-I-1	7.24	5538	0.010	0.028	0.022	0.038	0.000000	0.000000	934.80	-833.20
1	FID	ACIS-I-5	7.23	5535	-0.169	0.031	0.015	0.022	0.000000	0.000000	-1813.41	1064.20
2	FID	ACIS-I-6	7.25	5537	0.066	0.011	0.015	0.026	0.000000	0.000000	400.23	1708.87
3	GUIDE	197526296	7.91	11087	-0.144	-0.152	0.078	0.123	240.655589	18.114009	-521.87	-1974.71
4	GUIDE	197530912	9.66	11081	-0.126	0.183	0.119	0.193	241.559759	17.403488	320.91	1955.02
5	GUIDE	197530968	9.67	11012	-0.034	0.158	0.116	0.190	241.553279	17.328552	570.48	2060.52
6	GUIDE	197531712	9.26	11081	0.153	-0.255	0.105	0.170	240.314426	17.436774	2181.61	-1898.68
7	GUIDE	197532936	9.75	11076	0.145	0.067	0.140	0.214	241.049650	17.100636	2097.93	902.32

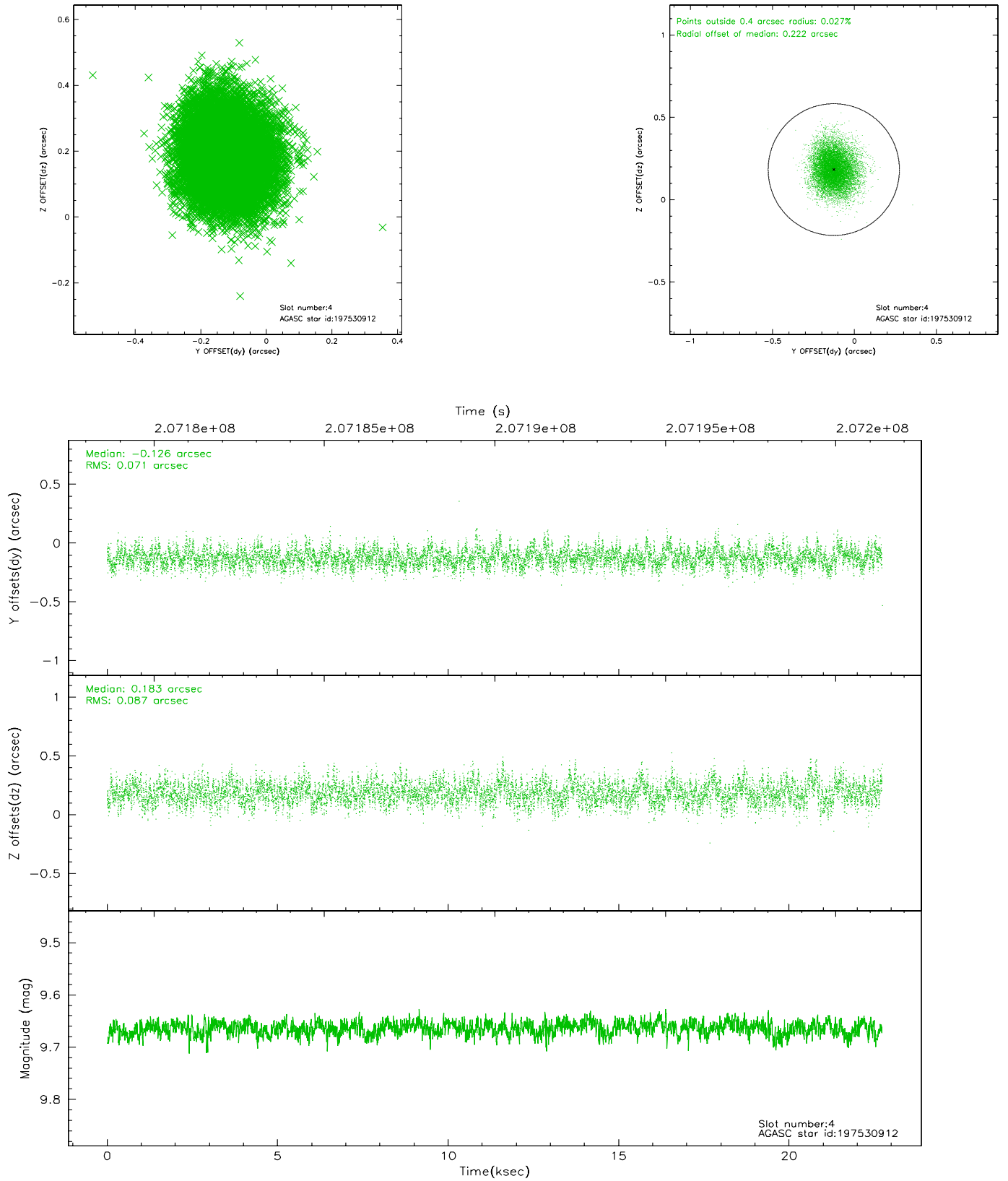


## 2.4 Star Slots

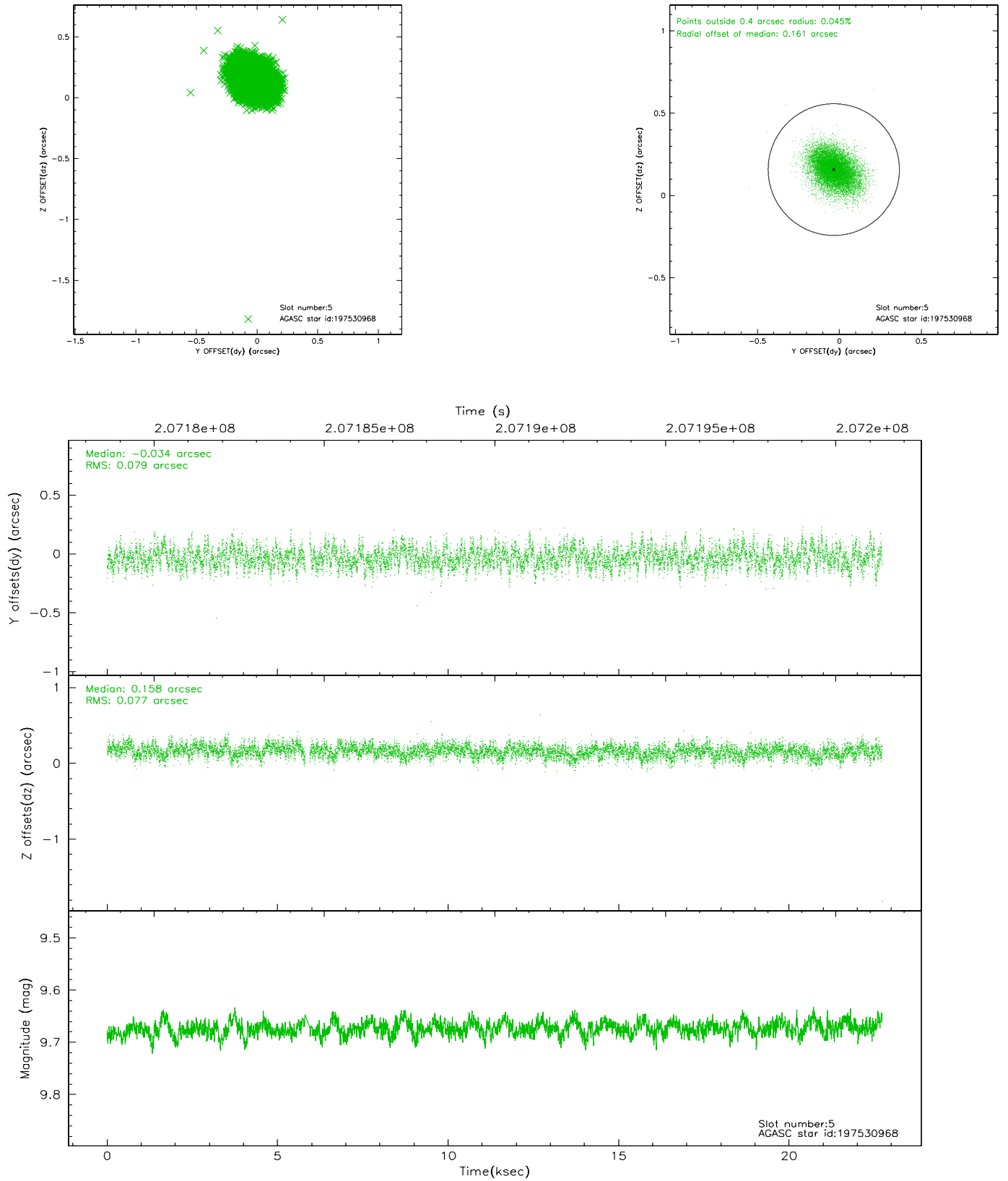
### 2.4.1 Slot 3



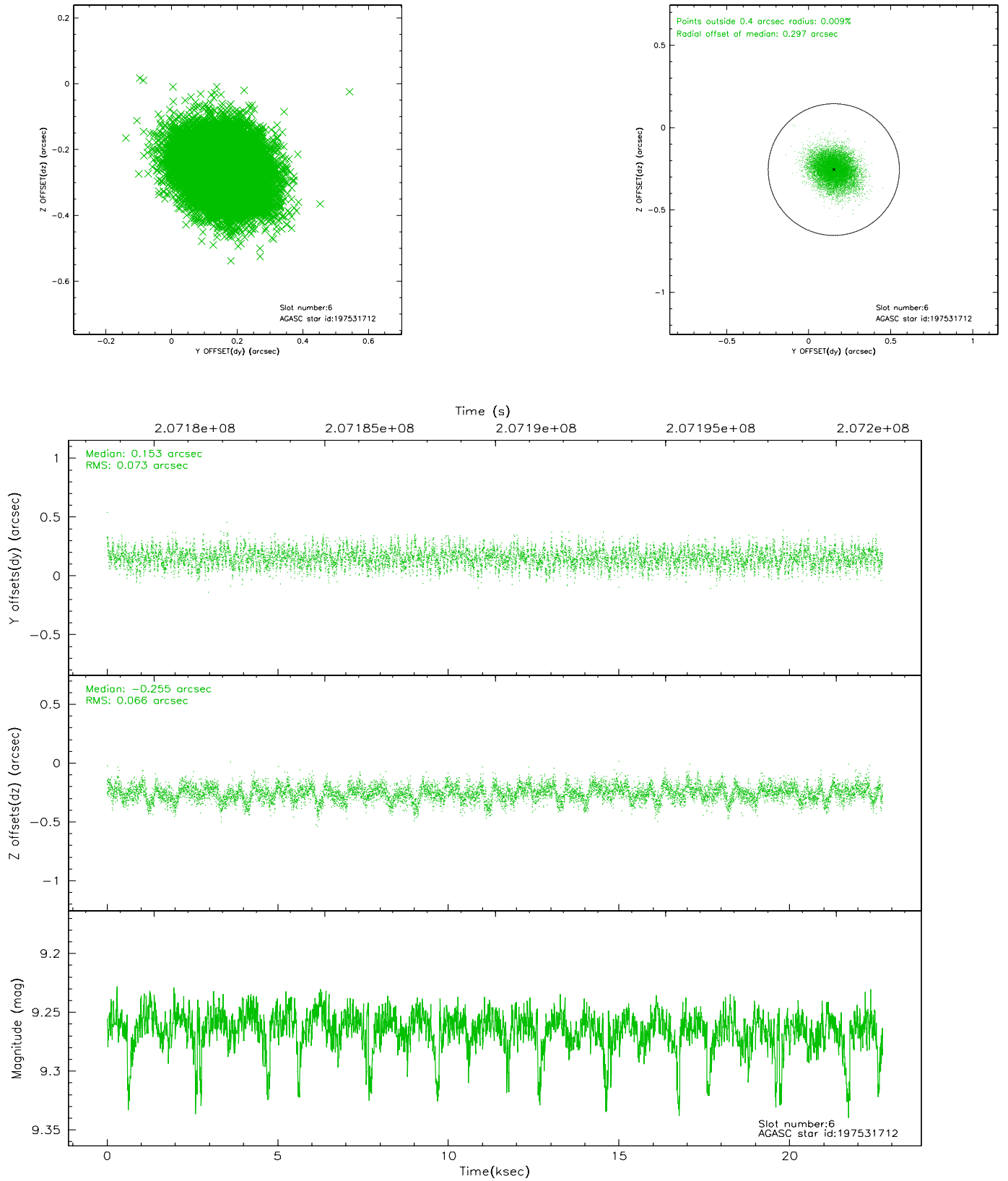
## 2.4.2 Slot 4



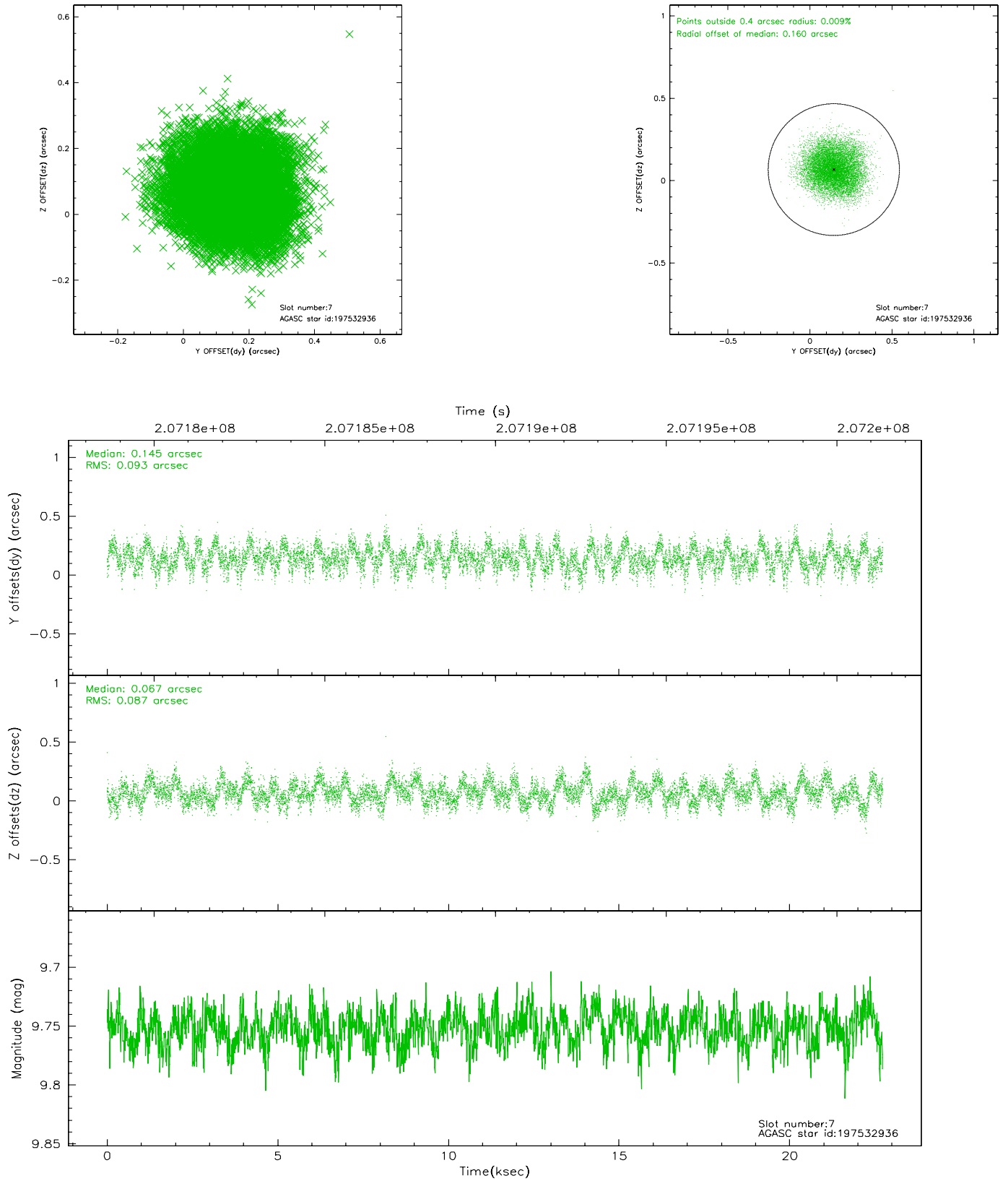
### 2.4.3 Slot 5



## 2.4.4 Slot 6

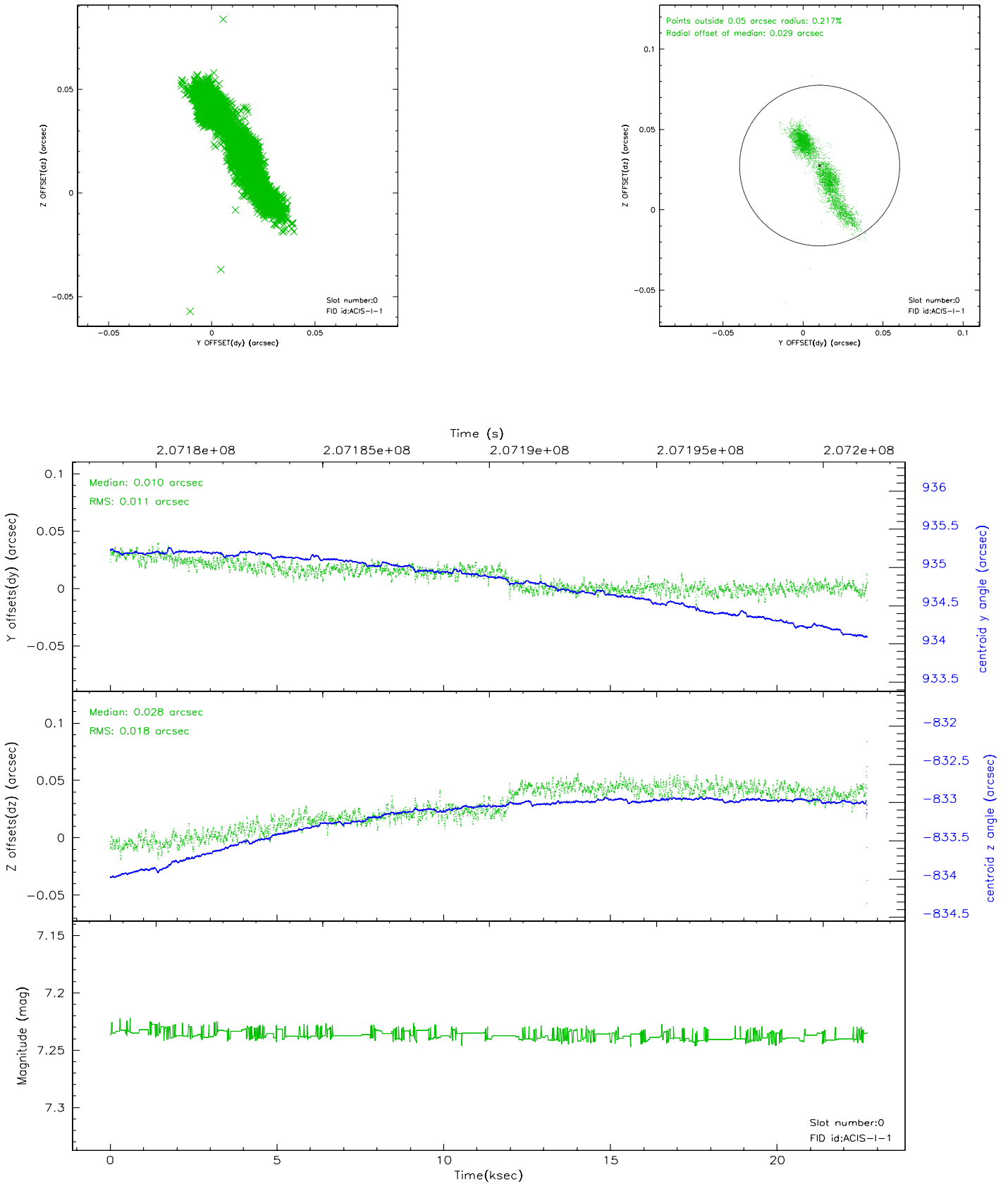


## 2.4.5 Slot 7

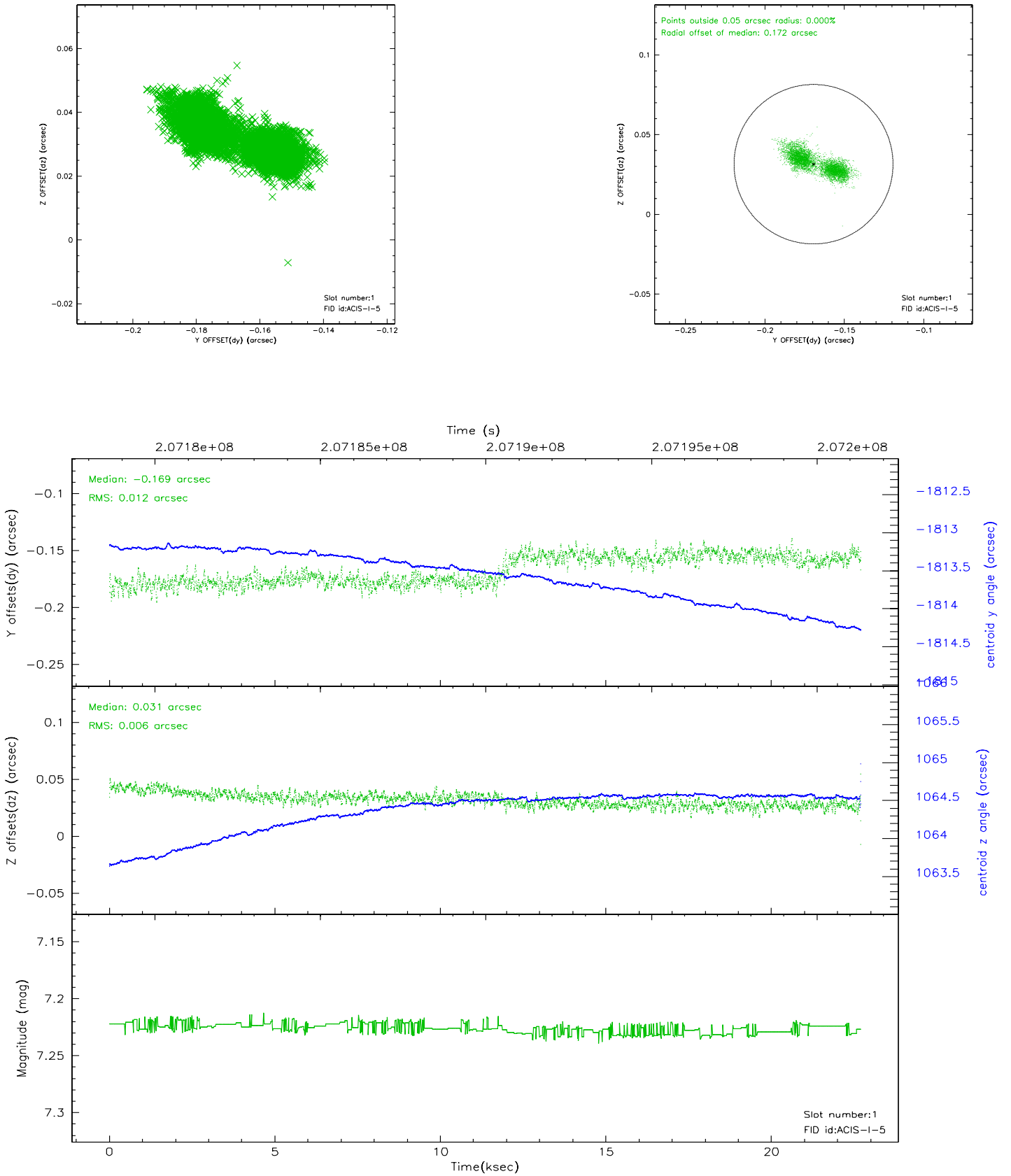


## 2.5 FID Slots

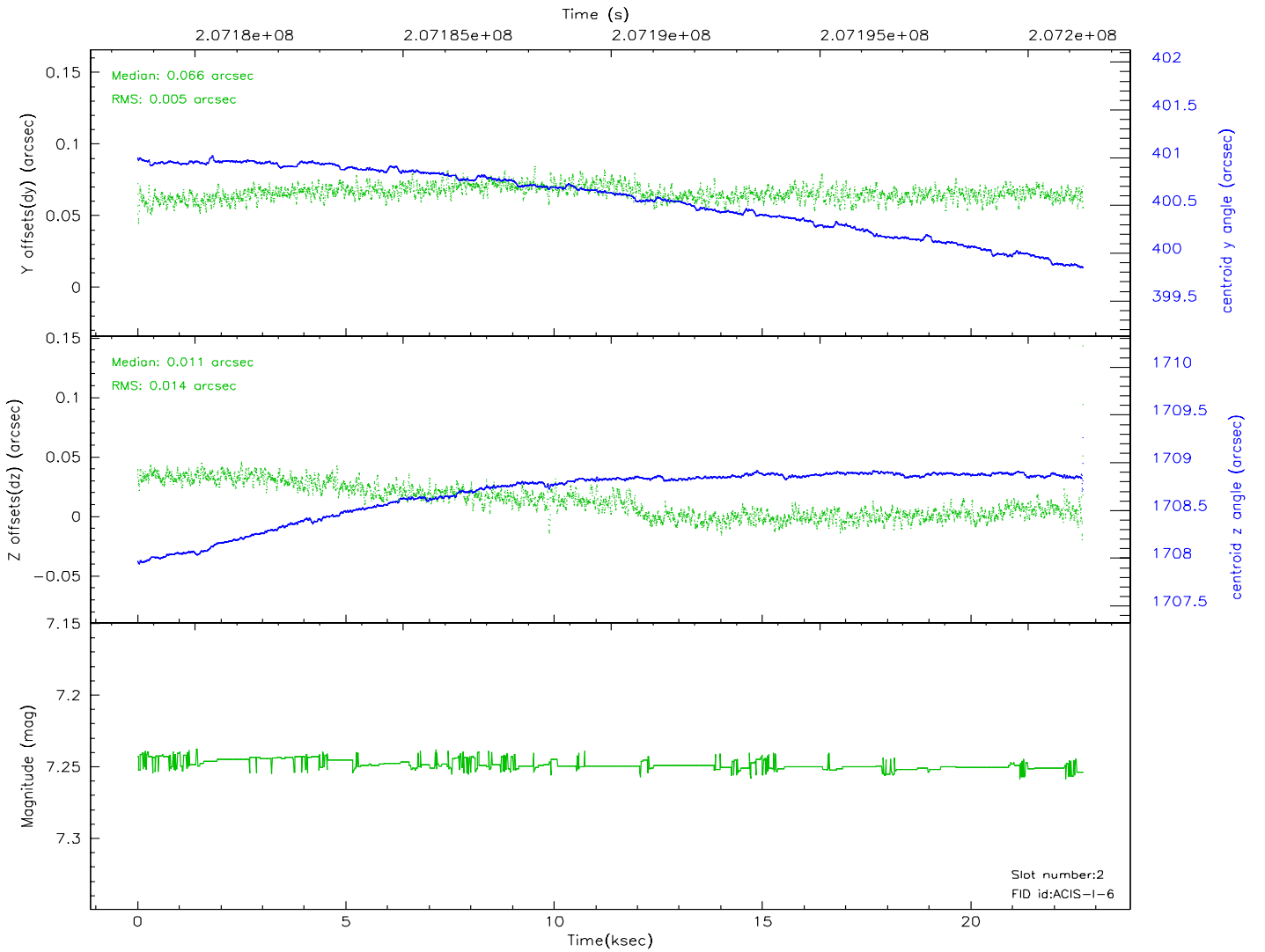
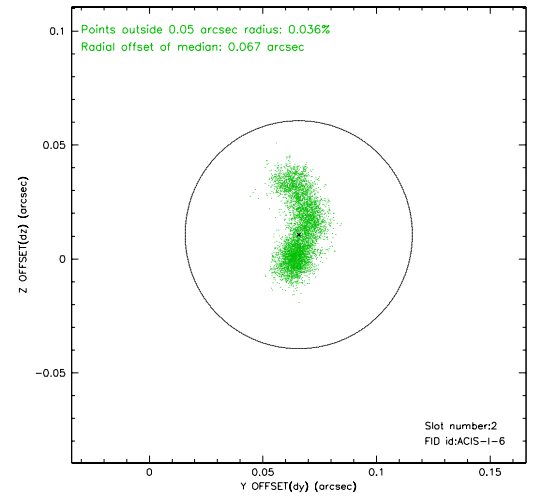
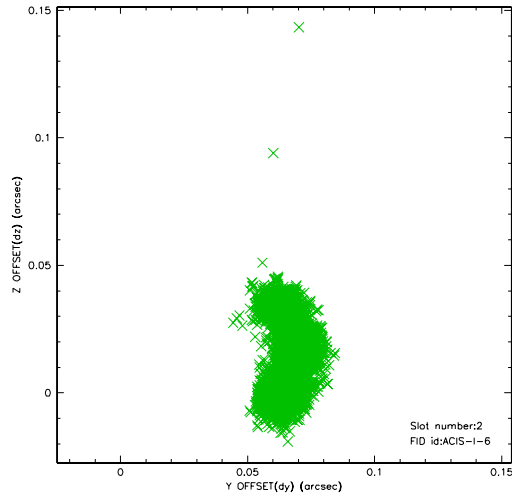
### 2.5.1 Slot 0



## 2.5.2 Slot 1

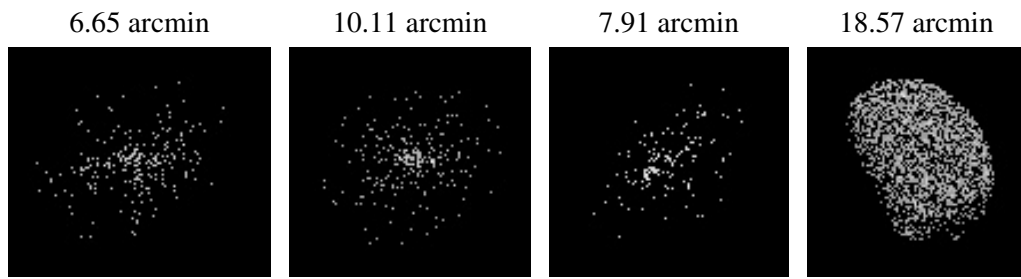


### 2.5.3 Slot 2





### 3 Point Sources



## A Summary

### A.1 Status

V&V Scientist	Beth Sundheim
V&V Date (YYYY-MM-DD)	2009.01.13
V&V Edition	1
V&V Disposition and Status	OK
V&V Charge Time	22.118

### A.2 Comments

Observation was interrupted by a RADMON trip.